

V&V Reference Report

L2 ASCDS Version : 7.6.9

Observation 2287 - L2 Version 001
Chandra X-Ray Center

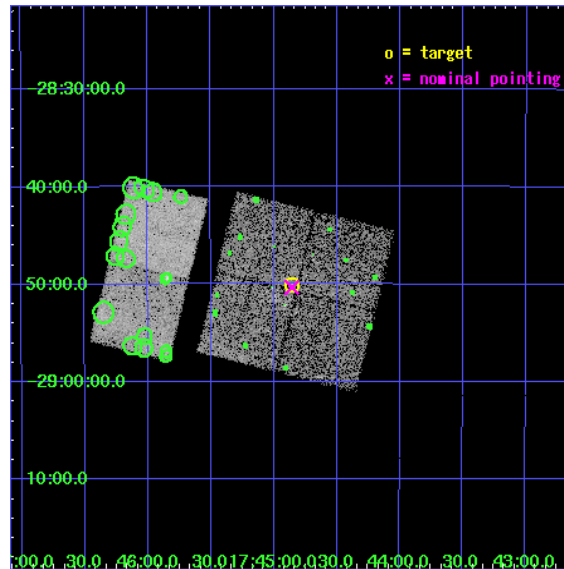
L2 Processing Date : Dec 14 2006

Contents

1	Front	2
2	OBI	3
2.1	OBI	3
2.1.1	Images	3
2.1.2	Bias	3
2.1.3	Parameters	4
2.1.4	Events	4
2.2	Compared Parameters	5
2.3	Aspect	6
2.4	Star Slots	9
2.4.1	Slot 3	9
2.4.2	Slot 4	10
2.4.3	Slot 5	11
2.4.4	Slot 6	12
2.4.5	Slot 7	13
2.5	FID Slots	14
2.5.1	Slot 0	14
2.5.2	Slot 1	15
2.5.3	Slot 2	16
3	Point Sources	17
A	Summary	18
A.1	Status	18
A.2	Comments	18

1 Front

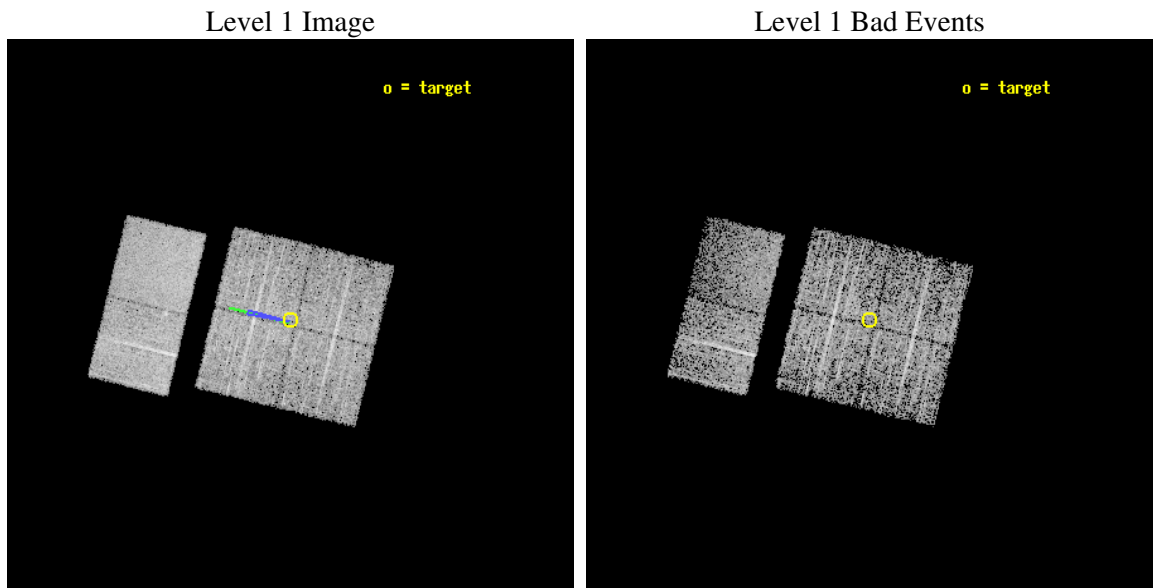
seq_num	900114
obs_id	2287
title	CHANDRA SURVEY OF THE GALACTIC RIDGE AROUND THE MILKY WAY CENTER
observer	Prof. Q. Daniel Wang
object	GCS 15
dtcycle	0
cycle	P
ra_targ	266.215
dec_targ	-28.8344
ra_nom	266.21411487437
dec_nom	-28.839053176124
roll_nom	283.80726613859
revision	2
ontime	10758.40001002
livetime	10622.170671162
ontime0	10758.40001002
ontime1	10755.159029782
ontime2	10758.40001002
ontime3	10758.40001002
ontime6	10758.40001002
ontime7	10758.40001002
l2events	59240



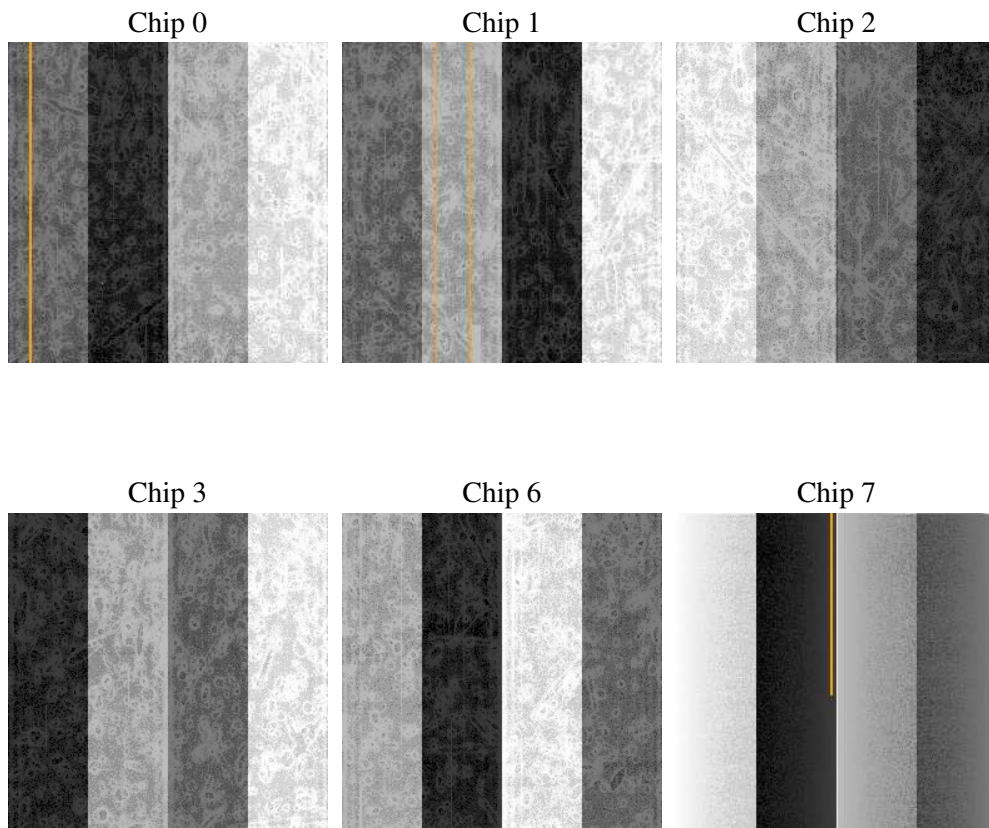
2 OBI

2.1 OBI

2.1.1 Images



2.1.2 Bias



2.1.3 Parameters

obi_num	0
ascdsver	7.6.9
caldbver	3.2.4
date	2006-12-14T13:22:18
revision	2

sched_exp_time	11000.000000
ontime	10763.383361086
ontime0	10763.383381024
ontime1	10760.142400786
ontime2	10763.383381024
ontime3	10763.383361086
ontime6	10763.383361086
ontime7	10763.383381024
l1events	198794

2.1.4 Events

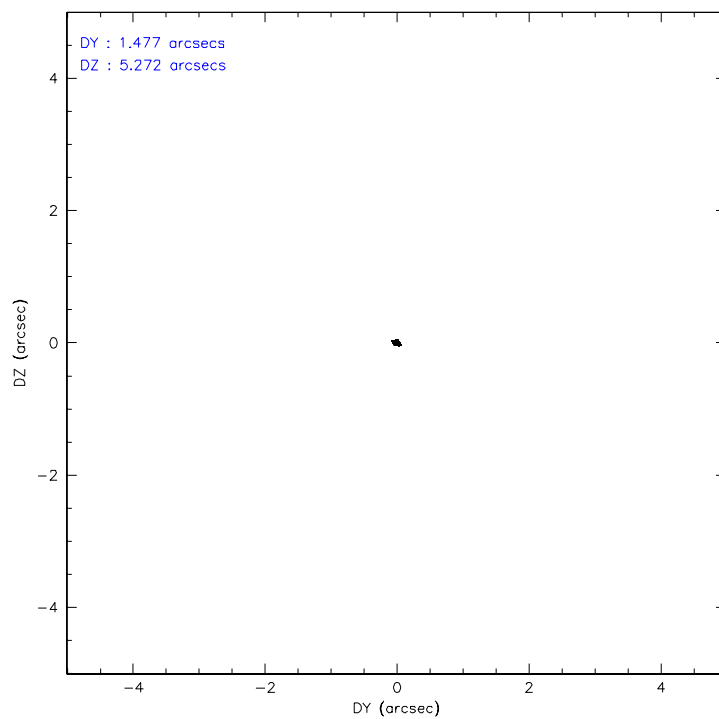
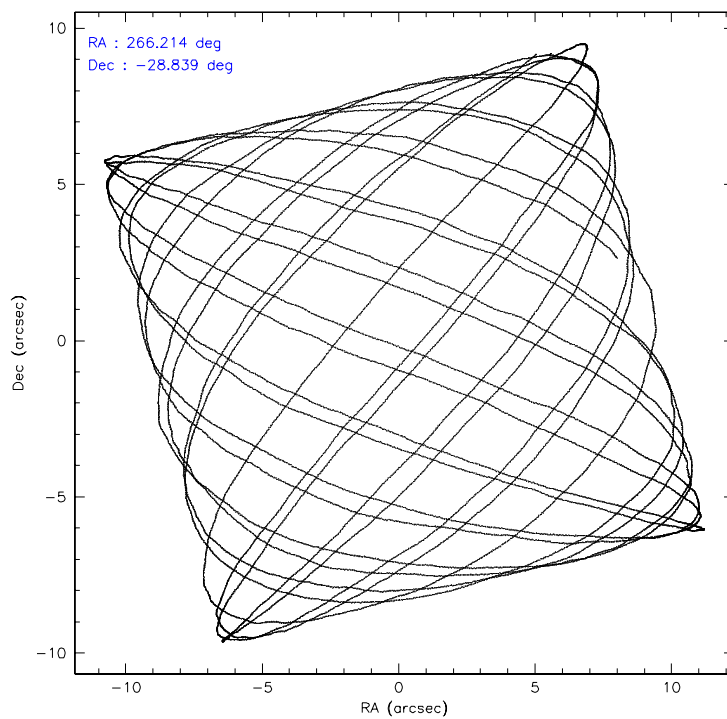
	ccd 0	ccd 1	ccd 2	ccd 3	ccd 6	ccd 7
level 1 events	28186	27651	32976	30090	40646	39245
rejected events	22154	21561	25061	23678	25486	17859
rejected %	78%	77%	75%	78%	62%	45%

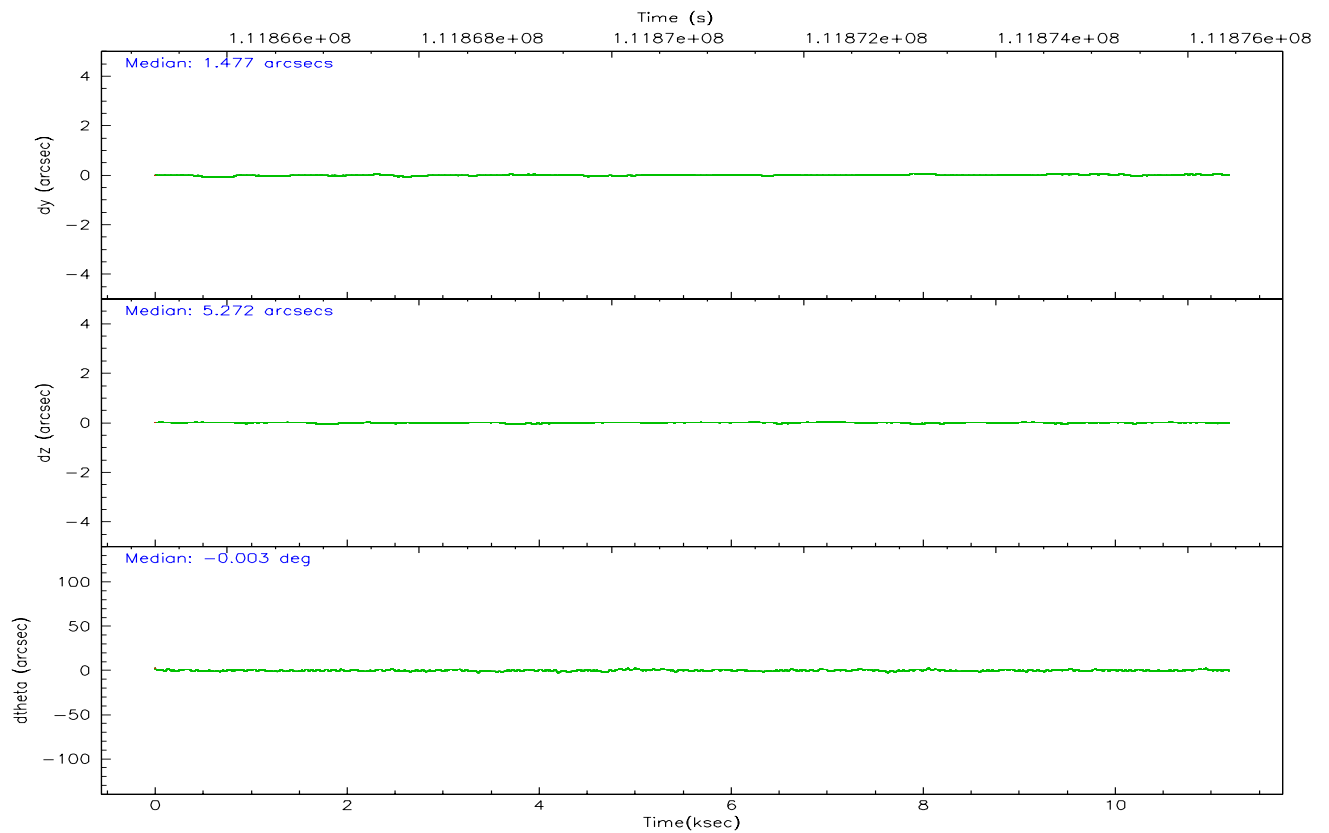
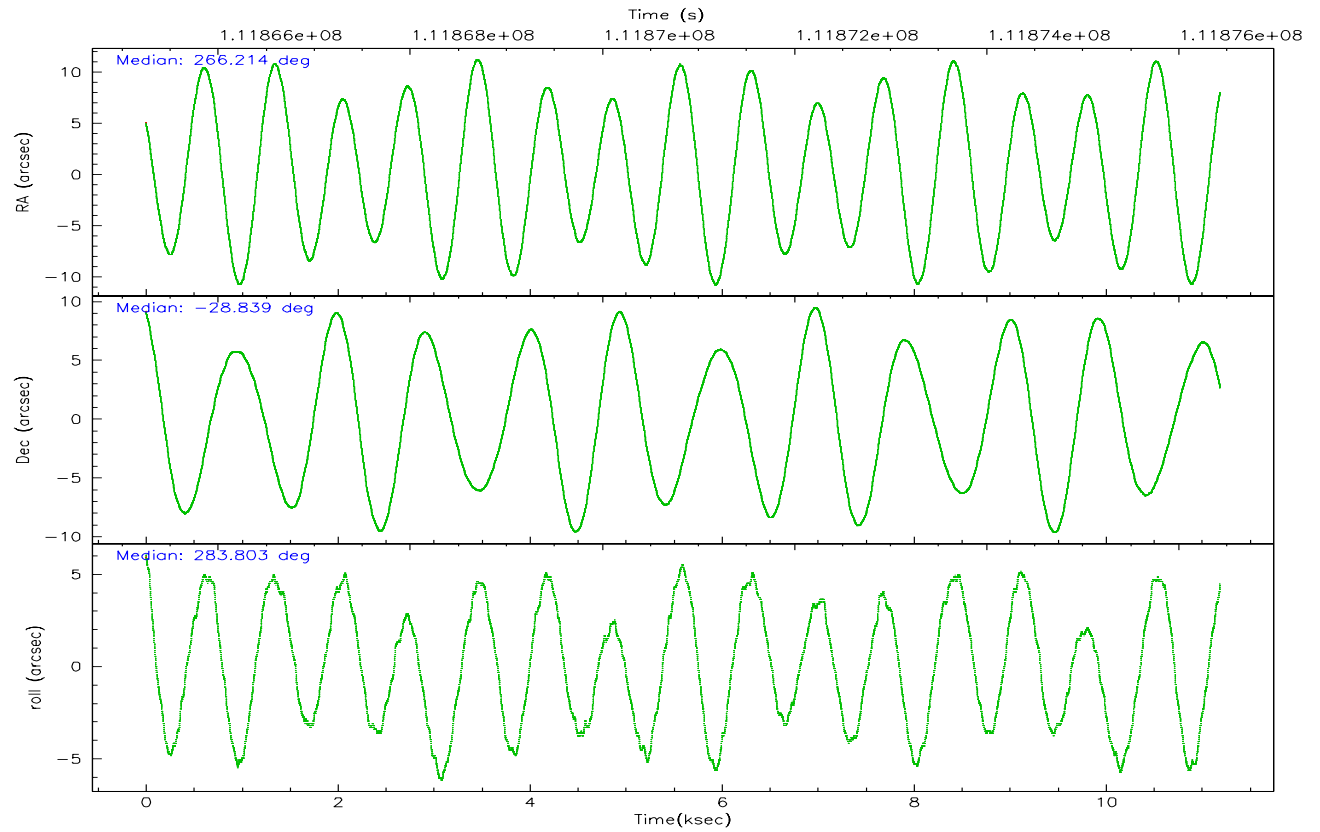
	ccd 0	ccd 1	ccd 2	ccd 3	ccd 6	ccd 7
grade 0 events	3081	3079	4432	3347	9602	1641
	10%	11%	13%	11%	23%	4%
grade 1 events	15	23	39	24	76	32
	0%	0%	0%	0%	0%	0%
grade 2 events	1087	1157	1404	1169	2267	5550
	3%	4%	4%	3%	5%	14%
grade 3 events	481	491	542	539	843	1329
	1%	1%	1%	1%	2%	3%
grade 4 events	484	499	542	474	882	1301
	1%	1%	1%	1%	2%	3%
grade 5 events	1151	1198	1019	1219	1435	3145
	4%	4%	3%	4%	3%	8%
grade 6 events	903	869	998	886	1577	11575
	3%	3%	3%	2%	3%	29%
grade 7 events	20984	20335	24000	22432	23964	14672
	74%	73%	72%	74%	58%	37%

2.2 Compared Parameters

Parameter	Planned	Actual	Parameter	Planned	Actual
Instrument	ACIS	ACIS	Obspar format version number	6	6
Detector	ACIS-012367	ACIS-012367	Obspar file type	PREDICTED	ACTUAL
Grating	NONE	NONE	Obspar update status	NONE	UPDATED
Data mode	FAINT	FAINT	Number of optional ACIS chips dropped	0	0
Observation mode	POINTING	POINTING	On-chip summing requested	N	N
Pointing RA	266.192438	266.2141148743671	Subarray requested	NONE	NONE
Pointing Dec	-28.819293	-28.83905317612421	Alternating exposures requested	N	N
Pointing Roll	283.588120	283.807266138592	Primary exposure time	0.000000	3.2
Roll angle	283.600000	283.600000			
Roll tolerance	2.000000	2.000000			
Roll constraint allows 180D rotation	N	N			
SIM focus pos (mm)	-0.782348	-0.7809083437167272			
SIM defocus (mm)	0	0.001439871863259334			
SIM translation stage pos (mm)	-233.592463	-233.5874344608287			
SIM translation stage offset (mm)	0	-0.005018542100998502			
Observation start time	111865434.184000	111865058.40408			
Observation start date	2001-07-18T17:42:50	2001-07-18T17:37:38			
Observation end time	111876434.184000	111876568.64203			
Observation end date	2001-07-18T20:46:10	2001-07-18T20:49:28			
Read mode	TIMED	TIMED			

2.3 Aspect



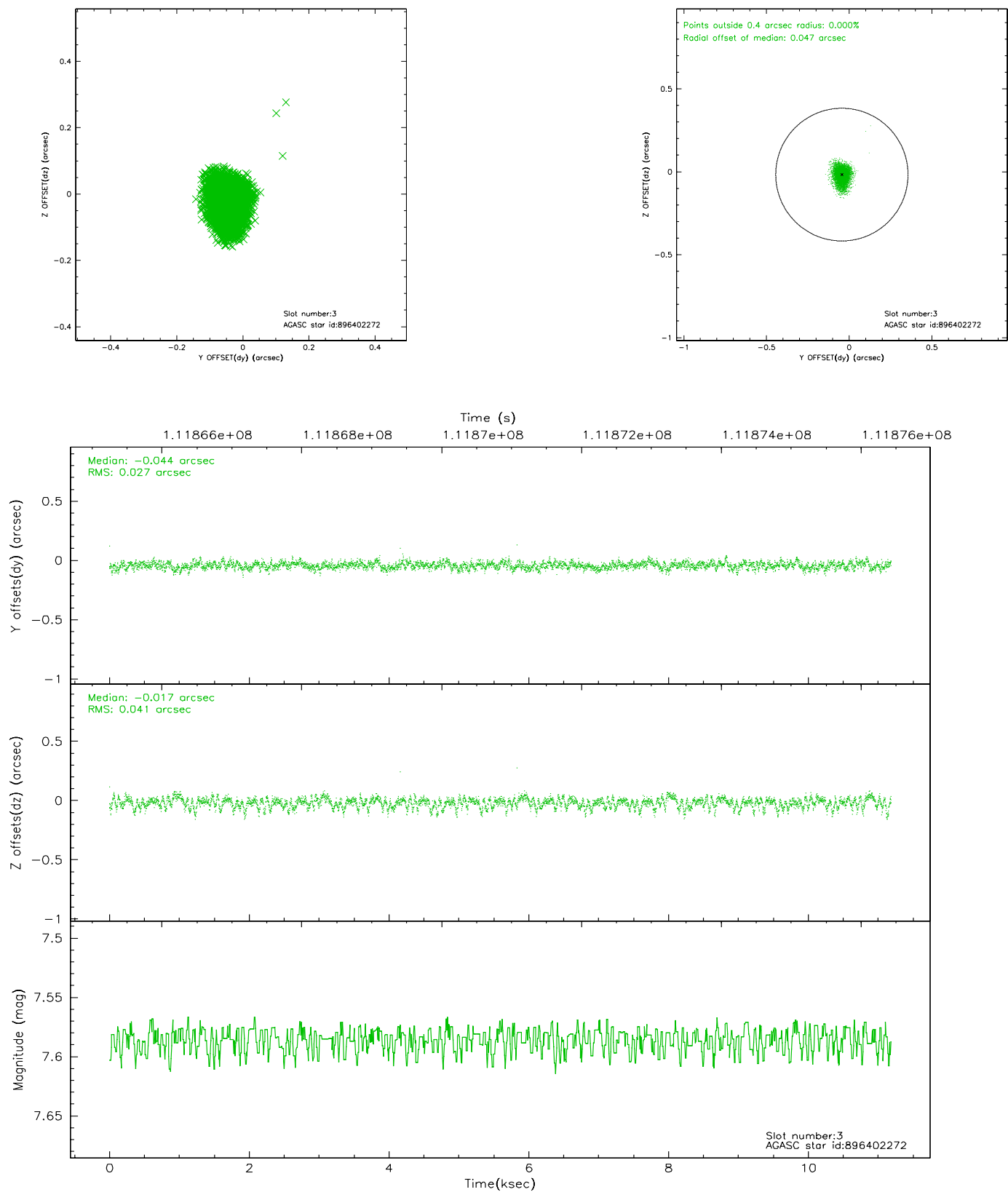


Slot Statistics

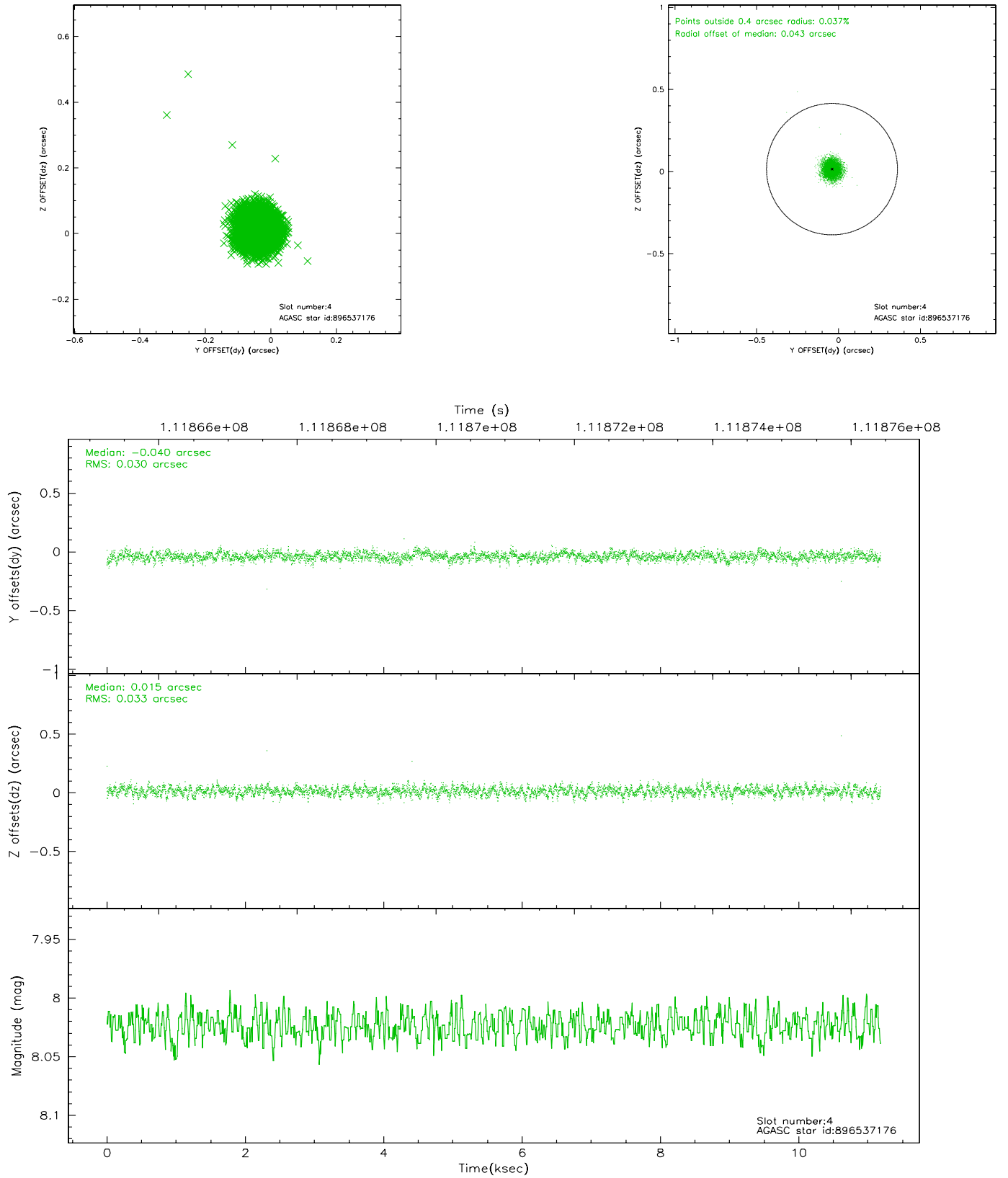
slot	status	id	mag	n_pts	med_dy	med_dz	dr1	dr2	ra	dec	mean_y	mean_z
0	FID	ACIS-I-2	7.15	2730	-0.007	-0.032	0.017	0.032	0.000000	0.000000	-755.81	-835.03
1	FID	ACIS-I-4	7.19	2730	-0.076	0.024	0.007	0.012	0.000000	0.000000	2157.95	1071.01
2	FID	ACIS-I-5	7.23	2730	-0.018	0.078	0.014	0.024	0.000000	0.000000	-1809.08	1069.39
3	GUIDE	896402272	7.59	5459	-0.044	-0.017	0.051	0.087	265.637294	-28.313189	-2179.59	-1282.86
4	GUIDE	896537176	8.02	5459	-0.040	0.015	0.047	0.075	266.498272	-28.678259	-265.13	1058.14
5	GUIDE	896540808	7.51	5459	-0.022	0.084	0.052	0.085	265.985401	-29.308604	1560.85	-1044.88
6	GUIDE	896536320	8.98	5458	0.129	-0.088	0.067	0.109	266.369048	-29.307026	1838.51	126.64
7	GUIDE	896540672	9.00	5455	-0.020	0.009	0.095	0.153	266.662941	-28.185372	-1863.76	1987.11

2.4 Star Slots

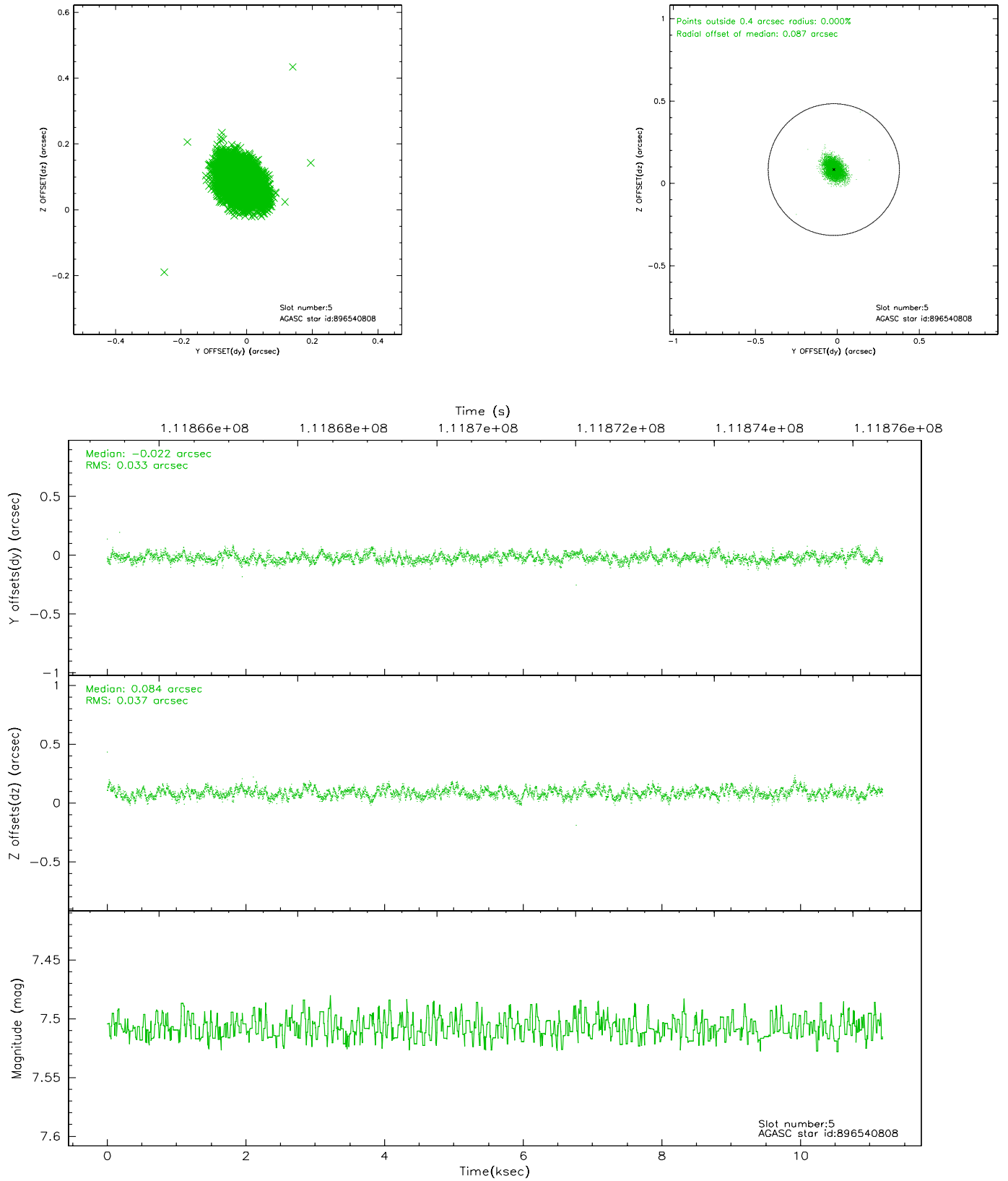
2.4.1 Slot 3



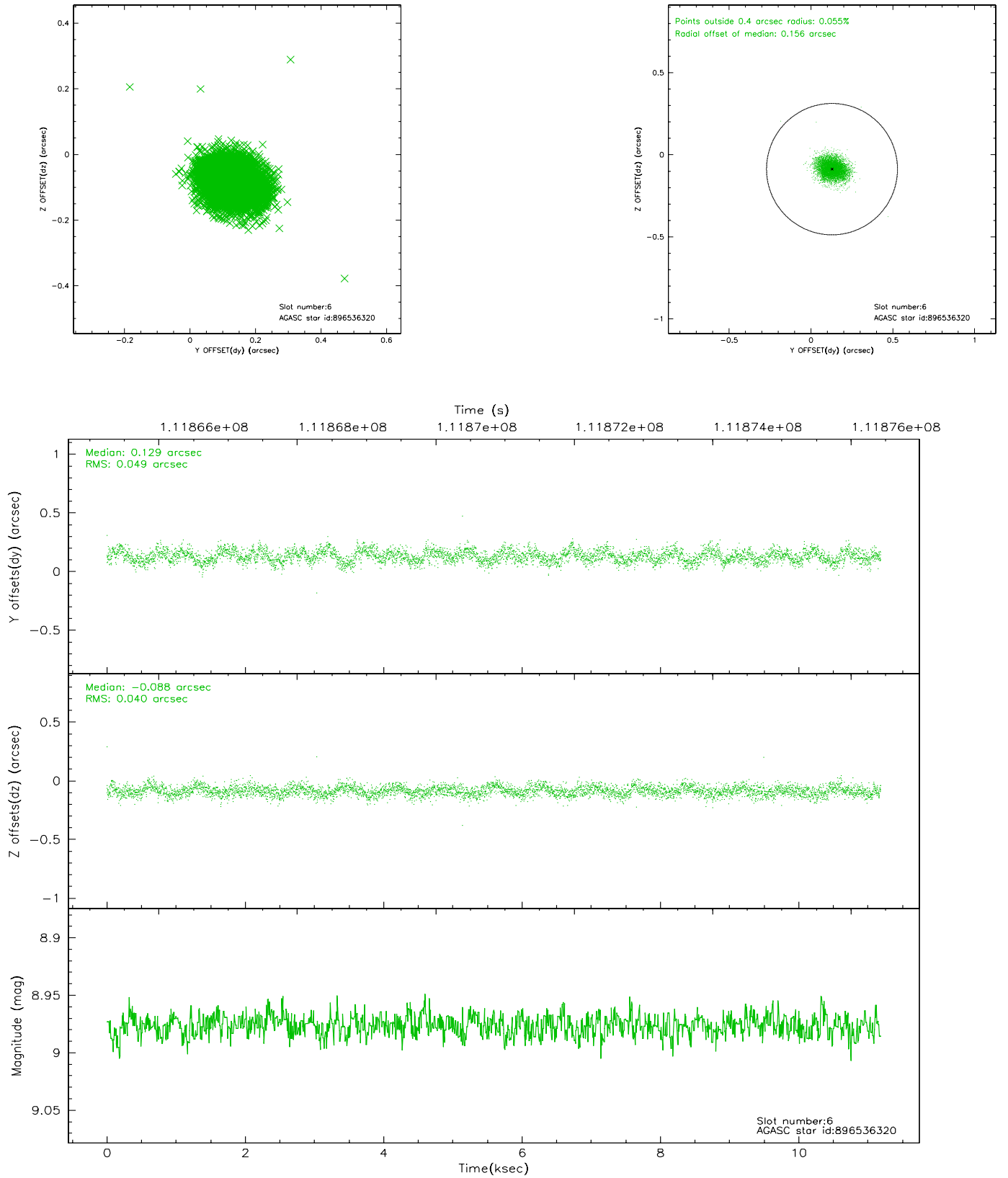
2.4.2 Slot 4



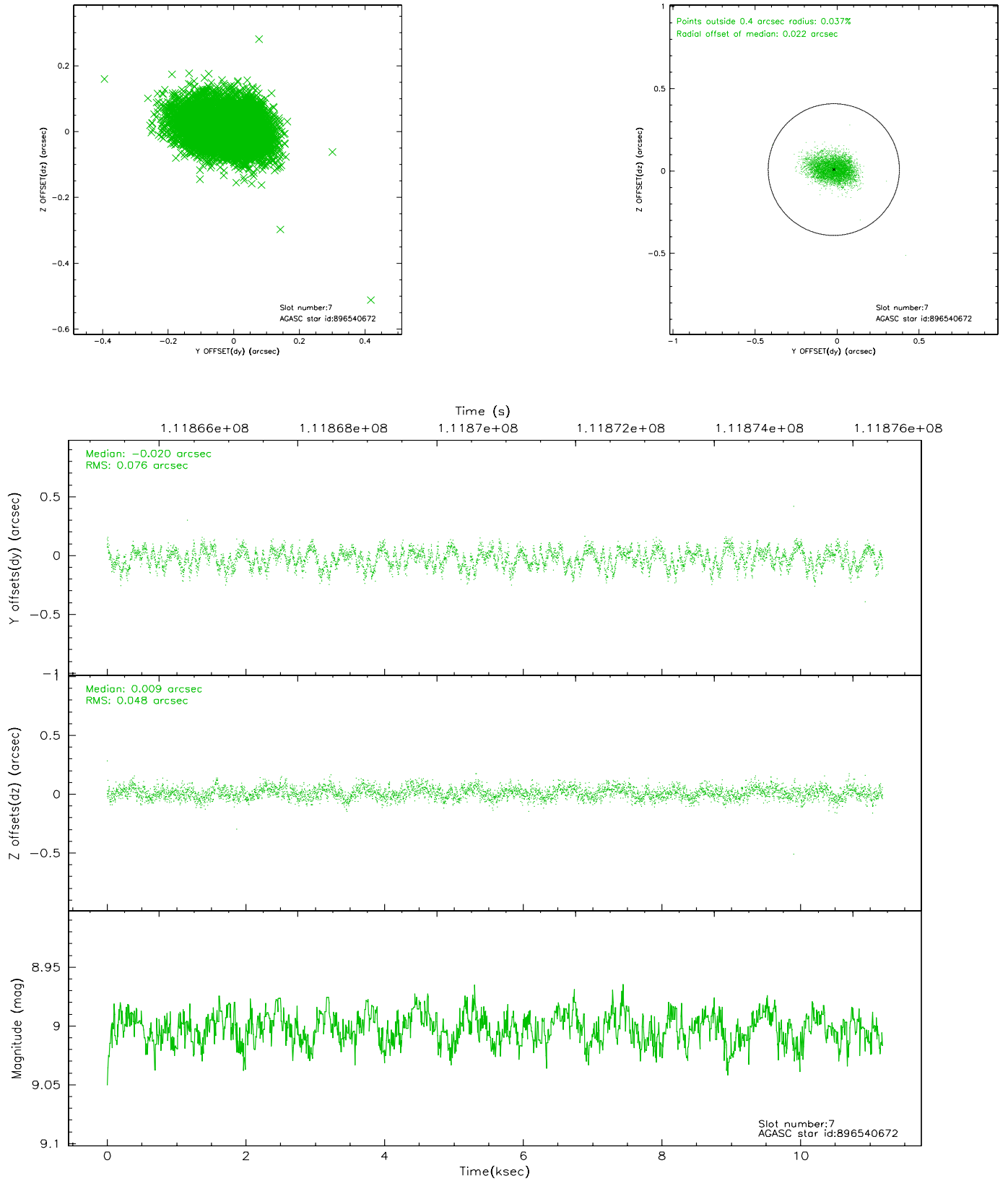
2.4.3 Slot 5



2.4.4 Slot 6

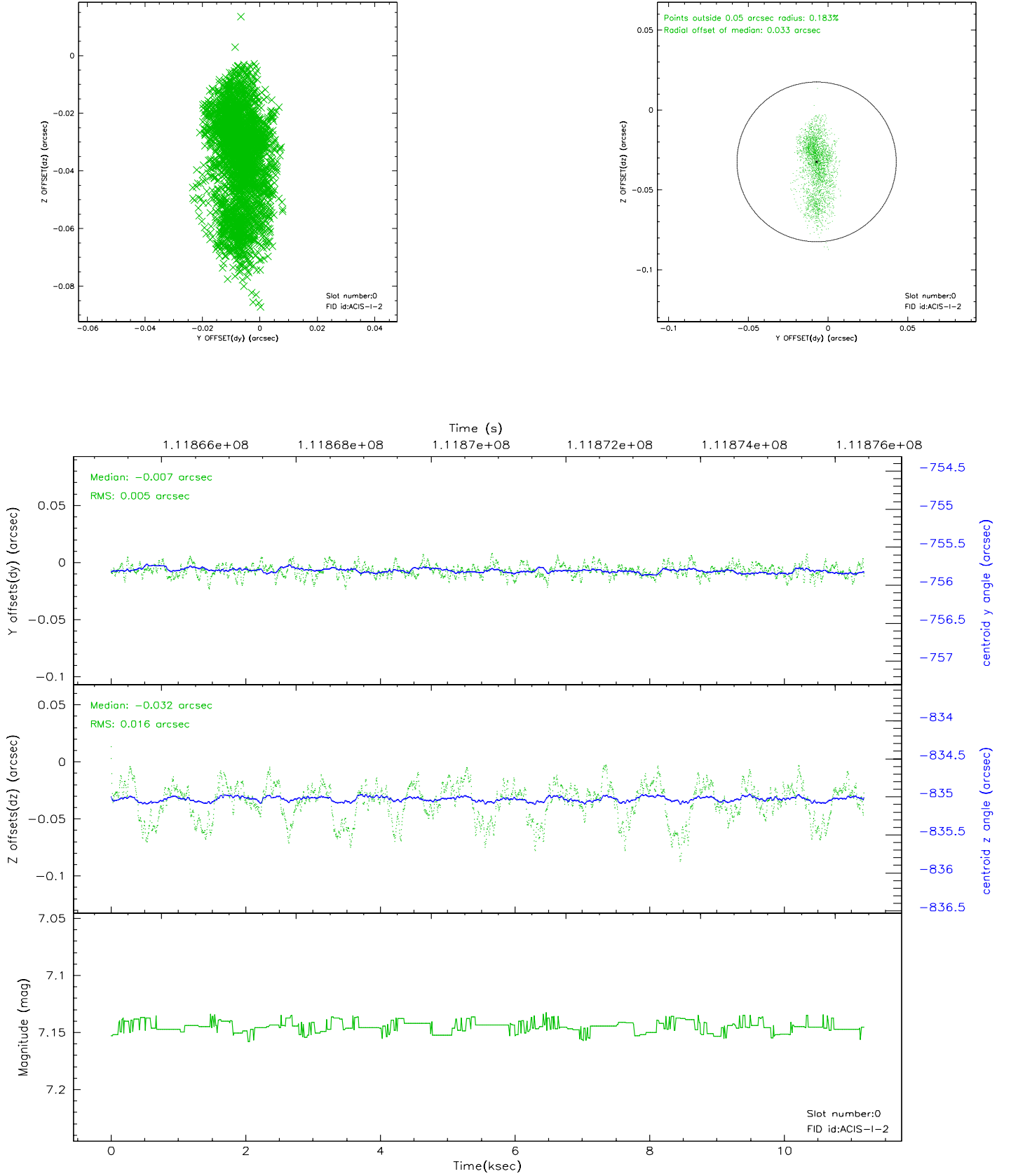


2.4.5 Slot 7

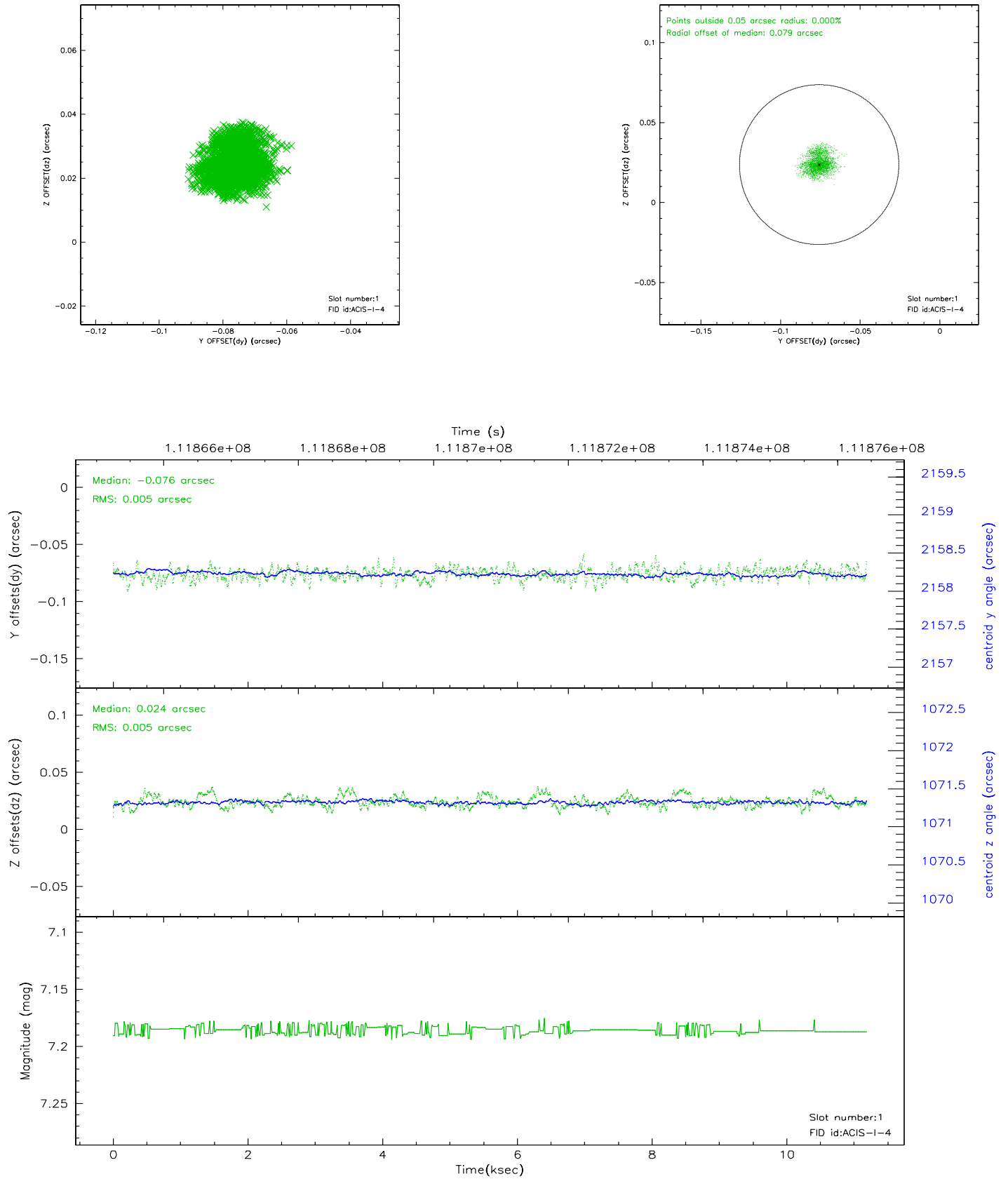


2.5 FID Slots

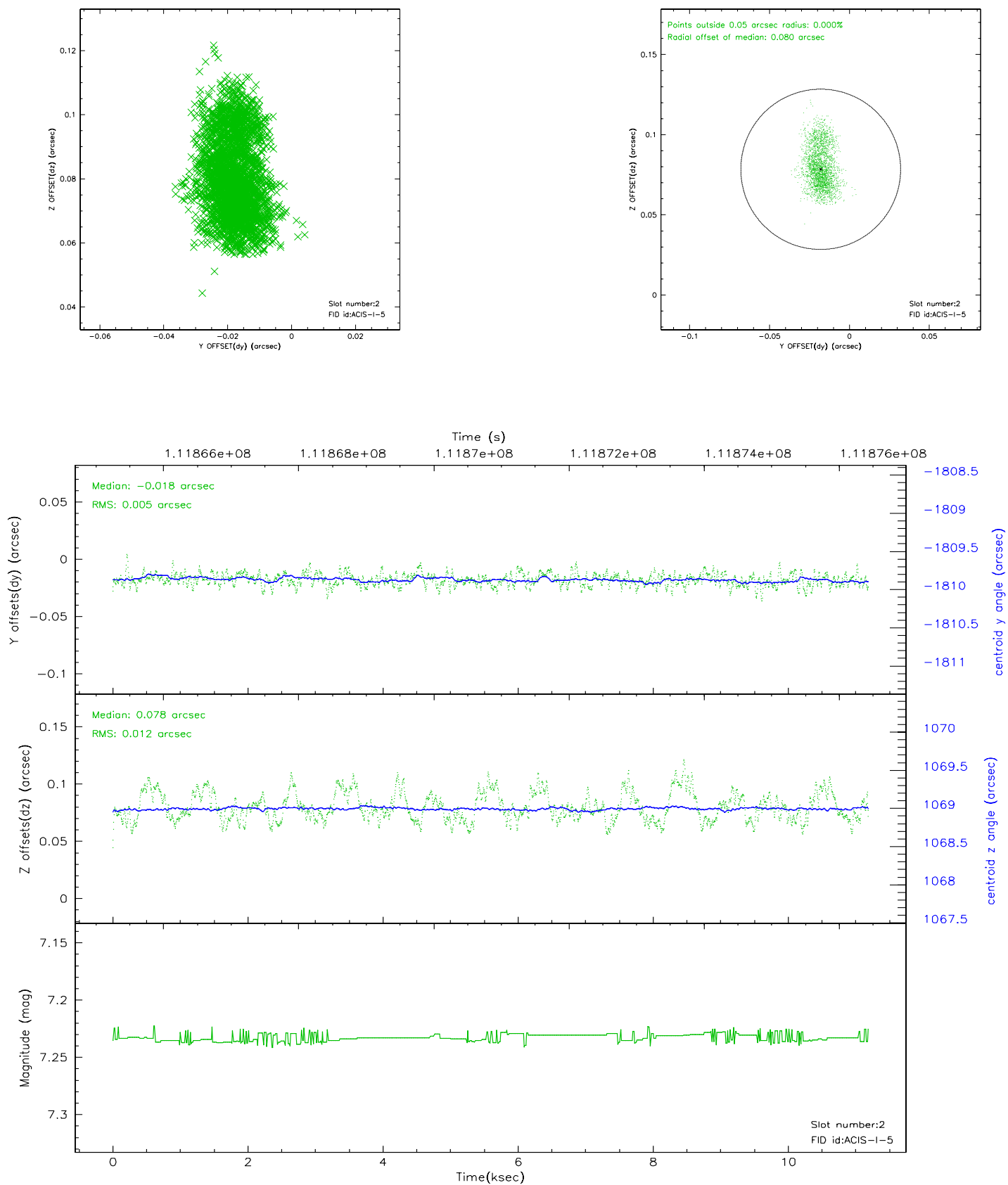
2.5.1 Slot 0



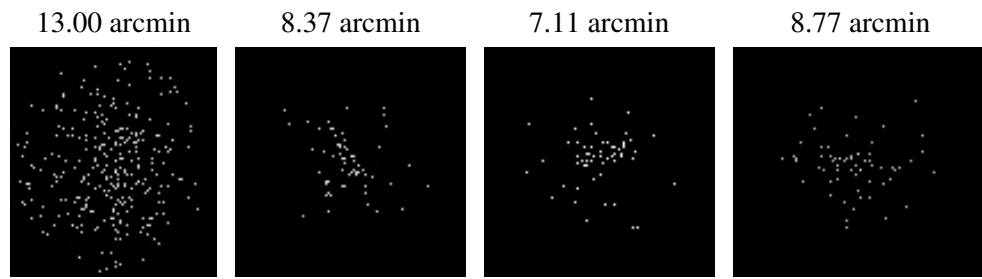
2.5.2 Slot 1



2.5.3 Slot 2



3 Point Sources



A Summary

A.1 Status

V&V Scientist	Jen Lauer
V&V Date (YYYY-MM-DD)	2006.12.14
V&V Edition	1
V&V Disposition and Status	OK
V&V Charge Time	10.8

A.2 Comments

Roll constraint met.