

V&V Reference Report

L2 ASCDS Version : 8.4.5

Observation 2286 - L2 Version 3
Chandra X-Ray Center

L2 Processing Date : Sep 20 2012

Contents

1	Front	2
2	OBI	3
2.1	OBI	3
2.1.1	Images	3
2.1.2	Bias	3
2.1.3	Parameters	4
2.1.4	Events	4
2.2	Compared Parameters	5
2.3	Aspect	6
2.4	Star Slots	9
2.4.1	Slot 3	9
2.4.2	Slot 4	10
2.4.3	Slot 5	11
2.4.4	Slot 6	12
2.4.5	Slot 7	13
2.5	FID Slots	14
2.5.1	Slot 0	14
2.5.2	Slot 1	15
2.5.3	Slot 2	16
A	Summary	17
A.1	Status	17
A.2	Comments	17

1 Front

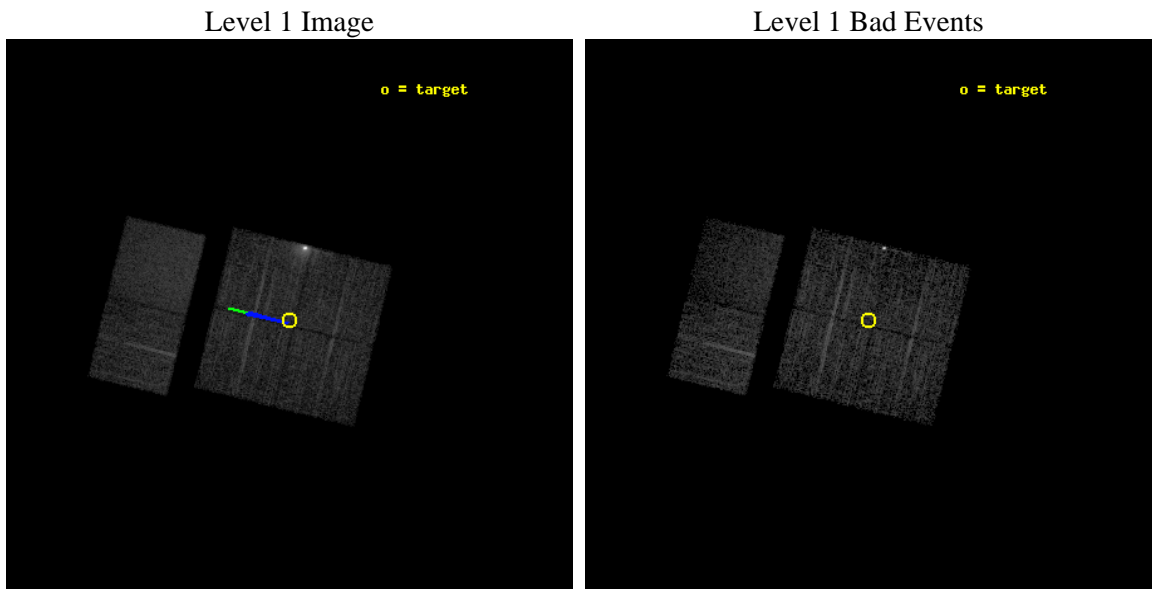
seq_num	900113	Sequence number
obs_id	2286	Observation id
title	CHANDRA SURVEY OF THE GALACTIC RIDGE AROUND THE MILKY WAY CENTER	P
observer	Prof. Q. Daniel Wang	Principal investigator
object	GCS 28	Source name
dtcycle	0	
cycle	P	events from which exps? Prim/Second/Both
ra_targ	266.0111	Observer's specified target RA [deg]
dec_targ	-29.8694	Observer's specified target Dec [deg]
ra_nom	266.01025903078	Nominal RA [deg]
dec_nom	-29.874086766824	Nominal Dec [deg]
roll_nom	283.8072743738	Nominal Roll [deg]
revision	3	Processing version of data
ontime	11760.000010937	Sum of GTIs [s]
livetime	11611.087809777	Livetime [s]
ontime0	11760.000010937	Sum of GTIs [s]
ontime1	11760.000010937	Sum of GTIs [s]
ontime2	11760.000010937	Sum of GTIs [s]
ontime3	11760.000010937	Sum of GTIs [s]
ontime6	11760.000010937	Sum of GTIs [s]
ontime7	11760.000010937	Sum of GTIs [s]
l2events	97136	Number of level 2 events



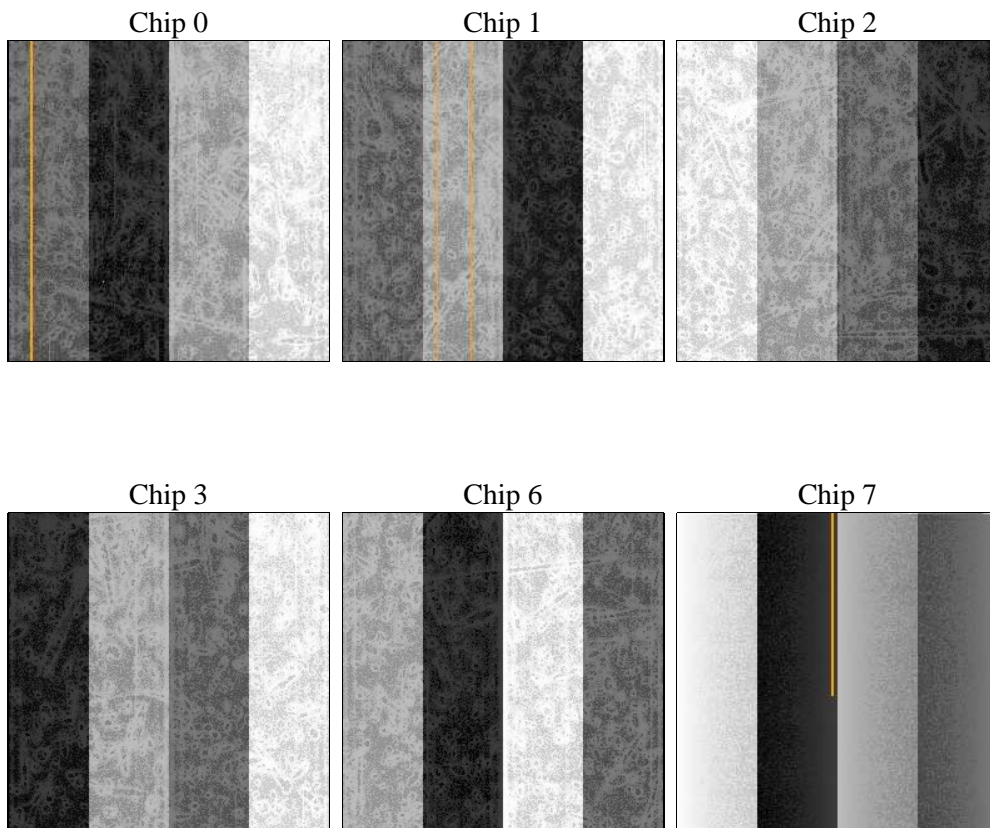
2 OBI

2.1 OBI

2.1.1 Images



2.1.2 Bias



2.1.3 Parameters

obi_num	0	Obi number	sched_exp_time	12000.000000	[s] Scheduled observation exposure time
ascdsver	8.4.5	Processing system revision	ontime	11760.000010937	Sum of GTIs [s]
caldsver	4.5.1.1	 	ontime0	11760.000010937	Sum of GTIs [s]
date	2012-09-20T19:26:01	Date and time of file creation	ontime1	11760.000010937	Sum of GTIs [s]
revision	3	Processing version of data	ontime2	11760.000010937	Sum of GTIs [s]
			ontime3	11760.000010937	Sum of GTIs [s]
			ontime6	11760.000010937	Sum of GTIs [s]
			ontime7	11760.000010937	Sum of GTIs [s]
			l1events	252363	Number of level 1 events

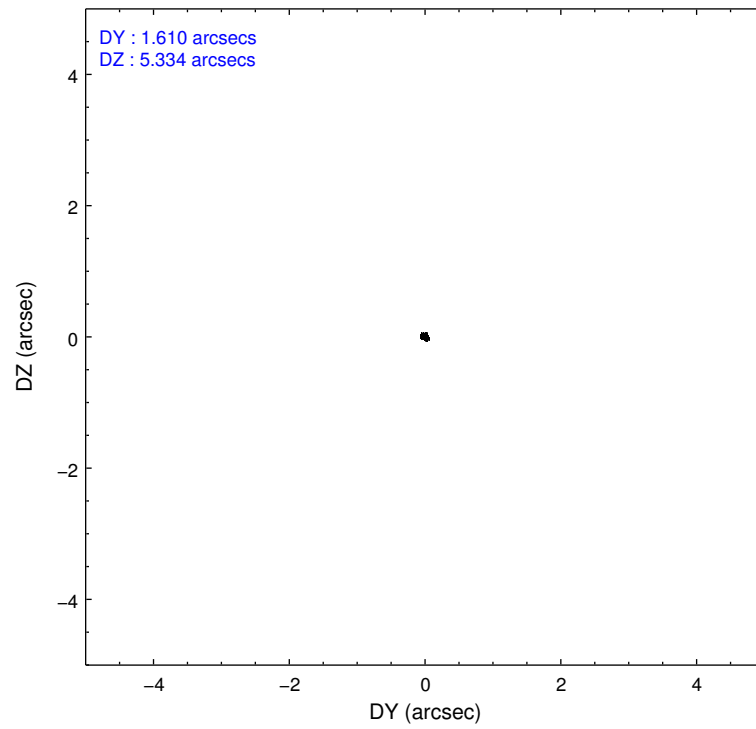
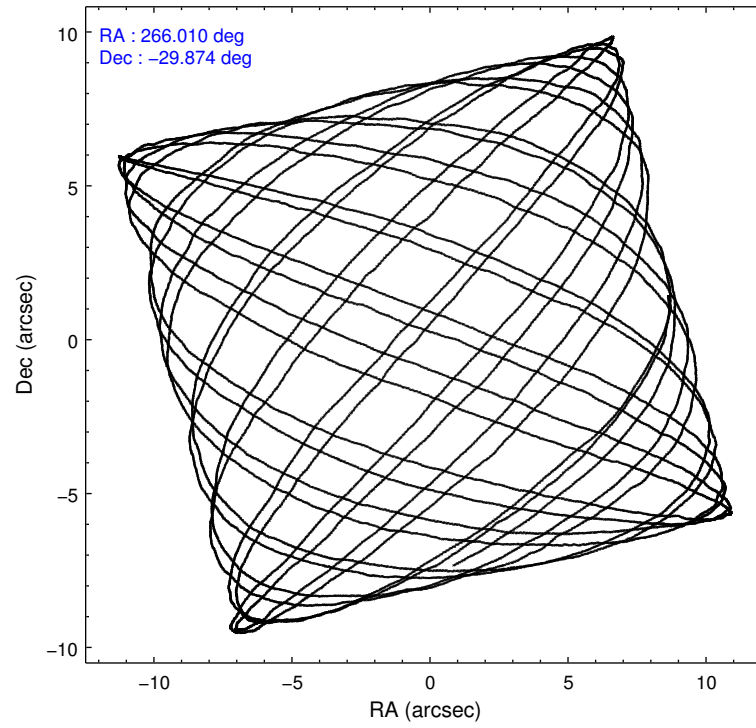
2.1.4 Events

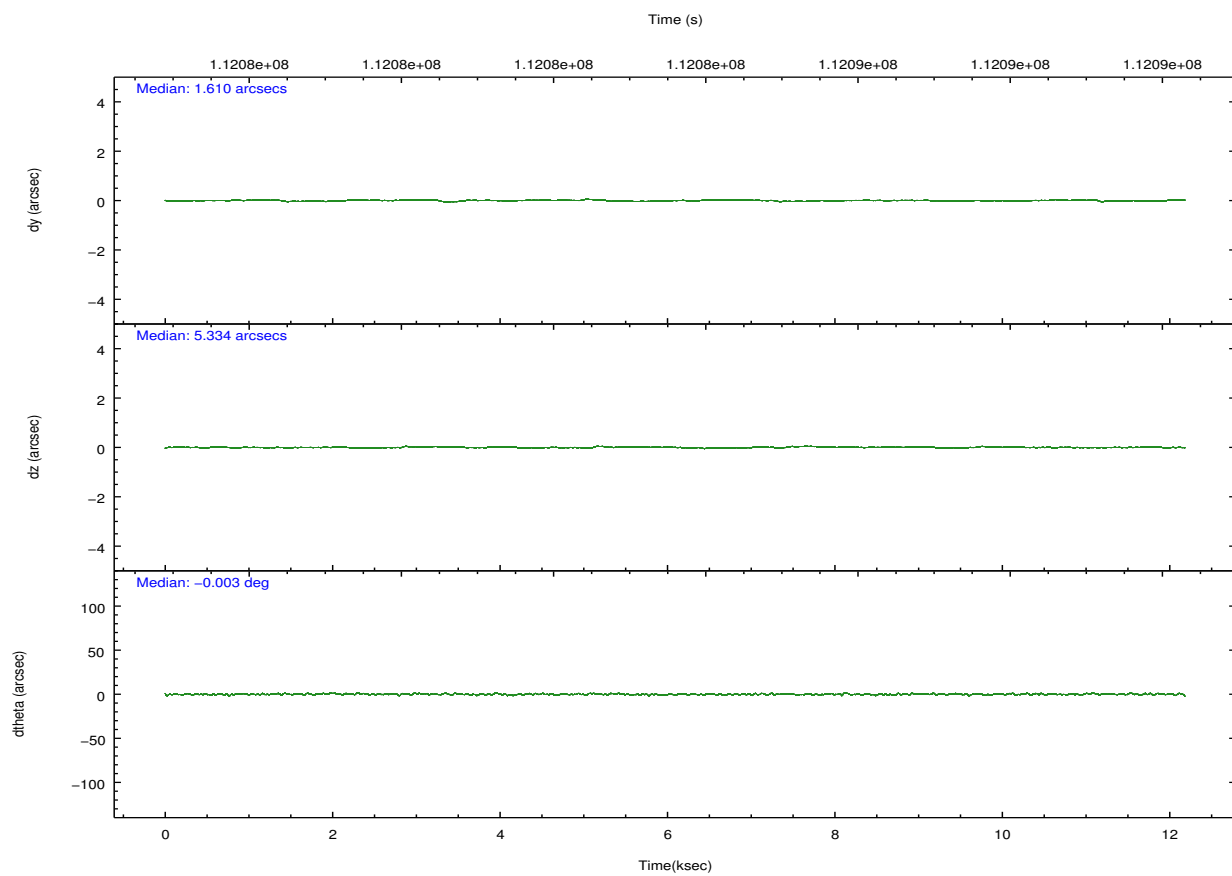
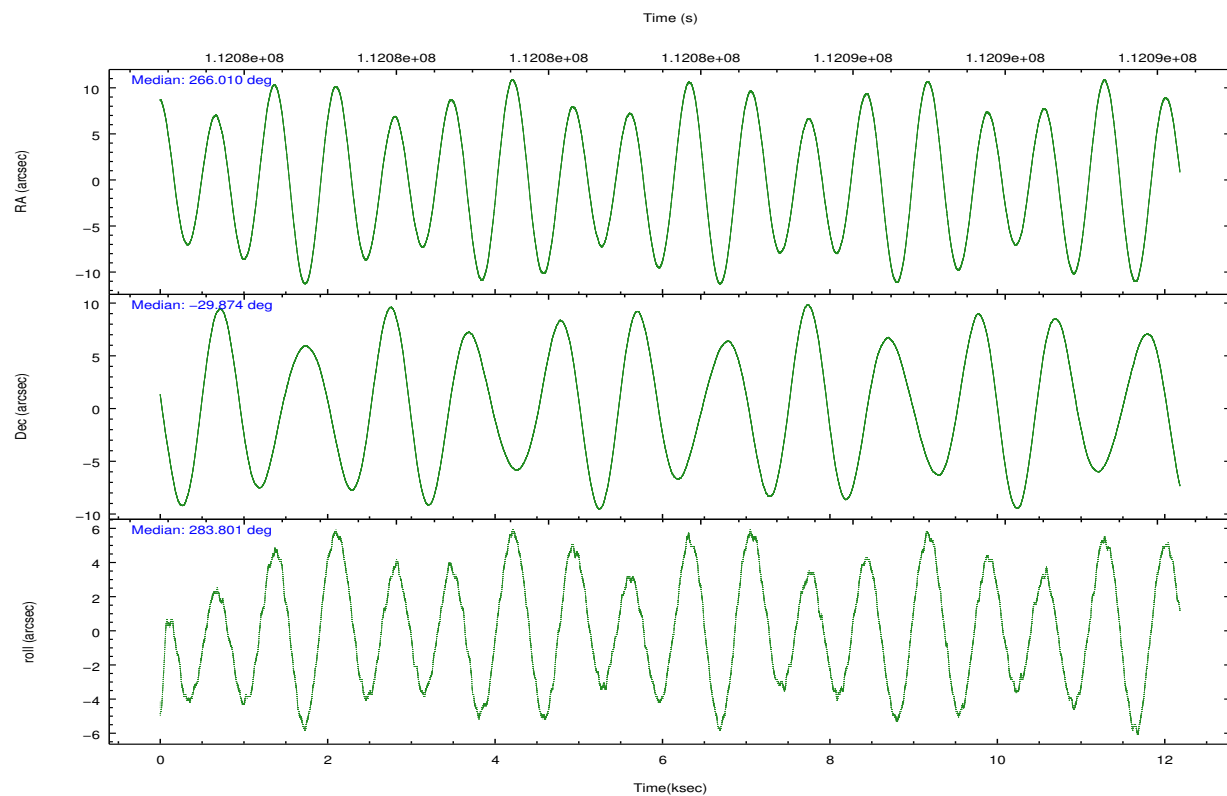
	ccd 0	ccd 1	ccd 2	ccd 3	ccd 6	ccd 7		ccd 0	ccd 1	ccd 2	ccd 3	ccd 6	ccd 7
level 1 events	29658	32868	32131	85647	32861	39198	grade 0 events	2643	5301	2655	30042	2881	2067
rejected events	24155	23263	26834	32314	26840	18436		8%	16%	8%	35%	8%	5%
rejected %	81%	70%	83%	37%	81%	47%	grade 1 events	30	36	28	2210	23	35
								0%	0%	0%	2%	0%	0%
							grade 2 events	1064	1706	1027	9279	1139	4204
								3%	5%	3%	10%	3%	10%
							grade 3 events	505	671	400	3534	506	1913
								1%	2%	1%	4%	1%	4%
							grade 4 events	428	672	436	3388	525	2015
								1%	2%	1%	3%	1%	5%
							grade 5 events	1183	1350	1138	3215	1454	4435
								3%	4%	3%	3%	4%	11%
							grade 6 events	865	1257	780	7105	971	10570
								2%	3%	2%	8%	2%	26%
							grade 7 events	22940	21875	25667	26874	25362	13959
								77%	66%	79%	31%	77%	35%

2.2 Compared Parameters

Parameter	Planned	Actual	Parameter	Planned	Actual
Instrument	ACIS	ACIS	Obspar format version number	7	7
Detector	ACIS-012367	ACIS-012367	Obspar file type	PREDICTED	ACTUAL
Grating	NONE	NONE	Obspar update status	NONE	UPDATED
Data mode	FAINT	FAINT	Number of optional ACIS chips dropped	0	0
Observation mode	POINTING	POINTING	On-chip summing requested	N	N
[deg] Pointing RA	265.988300	266.0102590307819	Subarray requested	NONE	NONE
[deg] Pointing Dec	-29.854291	-29.87408676682449	Alternating exposures requested	N	N
[deg] Pointing Roll	283.587645	283.8072743737966	[s] Primary exposure time	0.000000	3.2
[deg] Roll angle	283.600000	283.600000			
[deg] Roll tolerance	2.000000	2.000000			
Roll constraint allows 180D rotation	N	N			
[mm] SIM focus pos	-0.782348	-0.7809083437167272			
[mm] SIM defocus	0	0.001439871863259334			
[mm] SIM translation stage pos	-233.592463	-233.5874344608287			
[mm] SIM translation stage offset	0	-0.005018542100998502			
[s] Observation start time (MET)	112077686.184000	112077309.77489			
Observation start date	2001-07-21T04:40:22	2001-07-21T04:35:09			
[s] Observation end time (MET)	112089686.184000	112089819.90038			
Observation end date	2001-07-21T08:00:22	2001-07-21T08:03:39			
Read mode	TIMED	TIMED			

2.3 Aspect



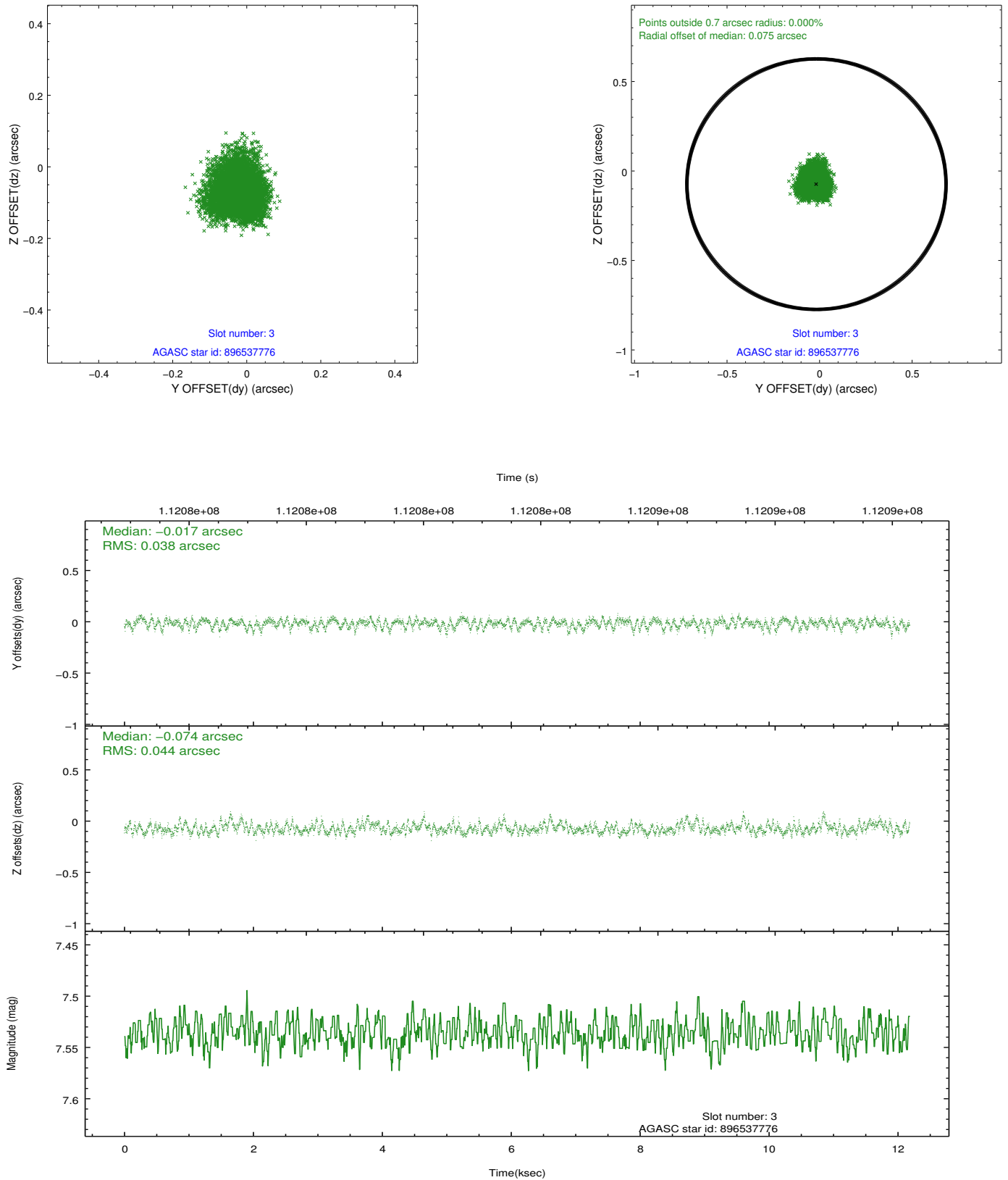


Slot Statistics

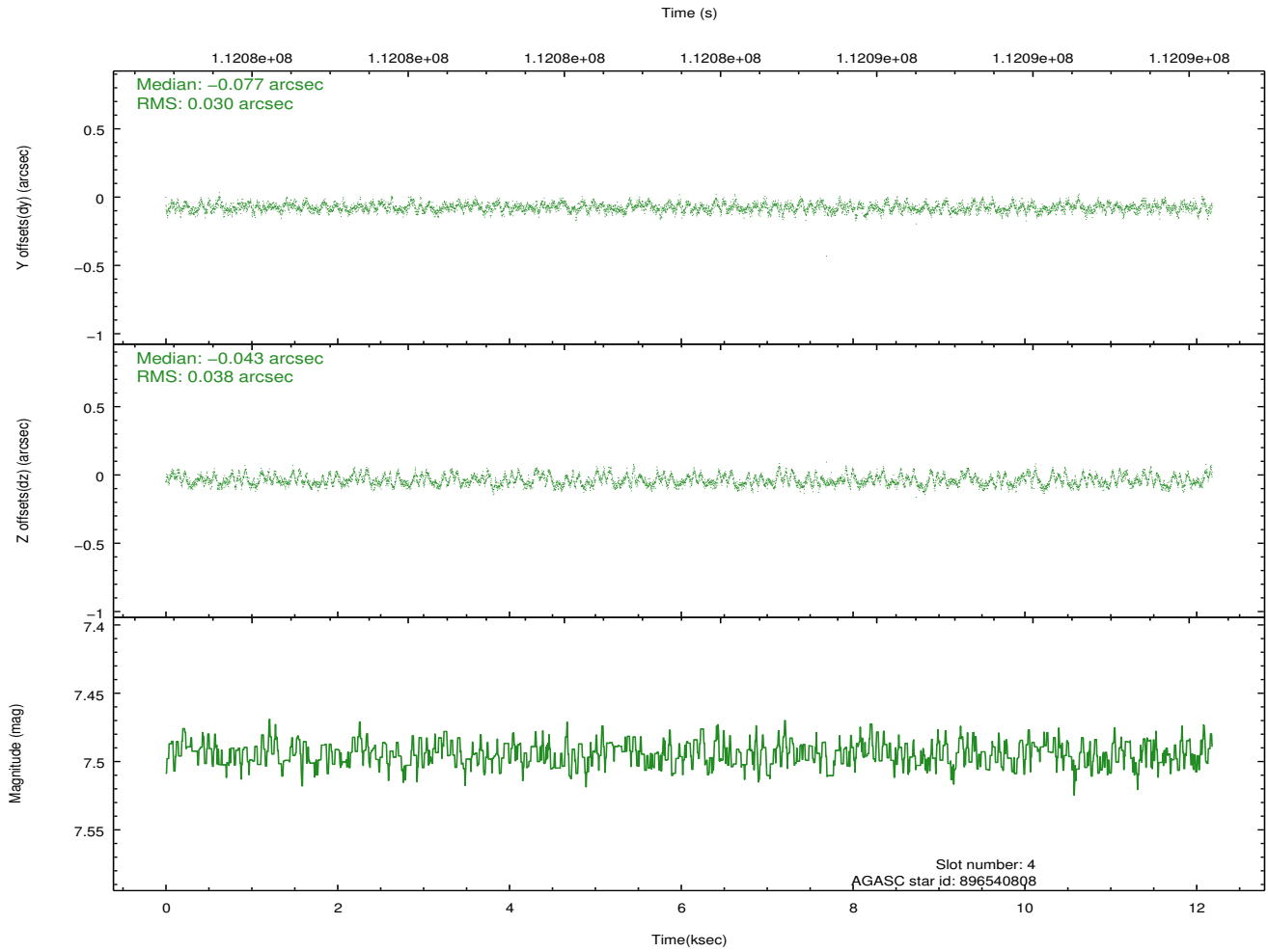
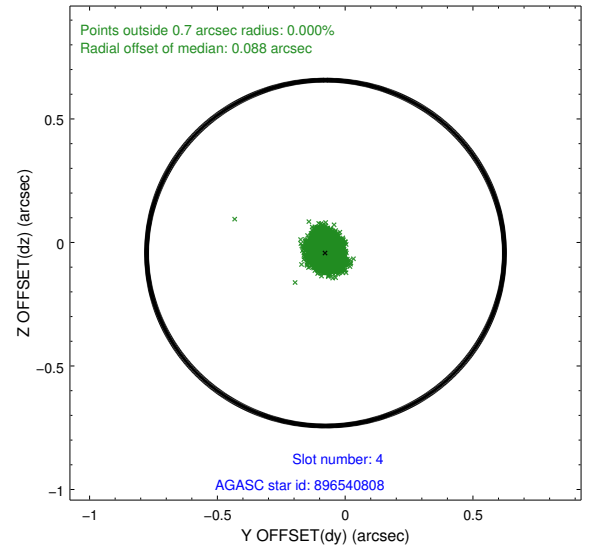
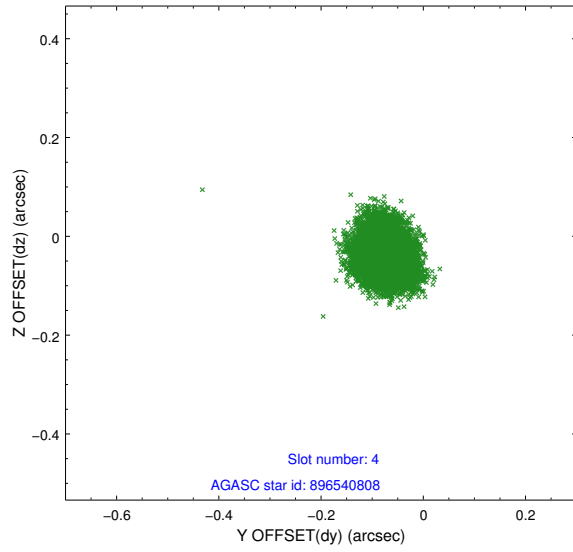
slot	status	id	mag	n_pts	med_dy	med_dz	dr1	dr2	ra	dec	mean_y	mean_z
0	FID	ACIS-I-2	7.15	2972	-0.030	-0.049	0.009	0.016	0.000000	0.000000	-755.97	-835.10
1	FID	ACIS-I-4	7.18	2972	-0.028	0.039	0.006	0.010	0.000000	0.000000	2157.89	1070.98
2	FID	ACIS-I-5	7.23	2972	-0.043	0.079	0.009	0.015	0.000000	0.000000	-1809.30	1069.30
3	GUIDE	896537776	7.54	5944	-0.017	-0.074	0.062	0.101	266.655684	-29.665673	-163.53	2187.62
4	GUIDE	896540808	7.49	5943	-0.077	-0.043	0.053	0.081	265.985401	-29.308604	-1911.37	453.18
5	GUIDE	966924920	8.08	5944	0.221	0.005	0.051	0.081	265.875401	-30.176961	1047.11	-613.91
6	GUIDE	896544544	8.67	5925	0.005	0.066	0.077	0.117	266.707391	-29.885740	644.56	2153.83
7	GUIDE	896405480	8.23	5941	-0.128	0.048	0.061	0.104	265.220460	-29.599691	-1447.22	-2122.17

2.4 Star Slots

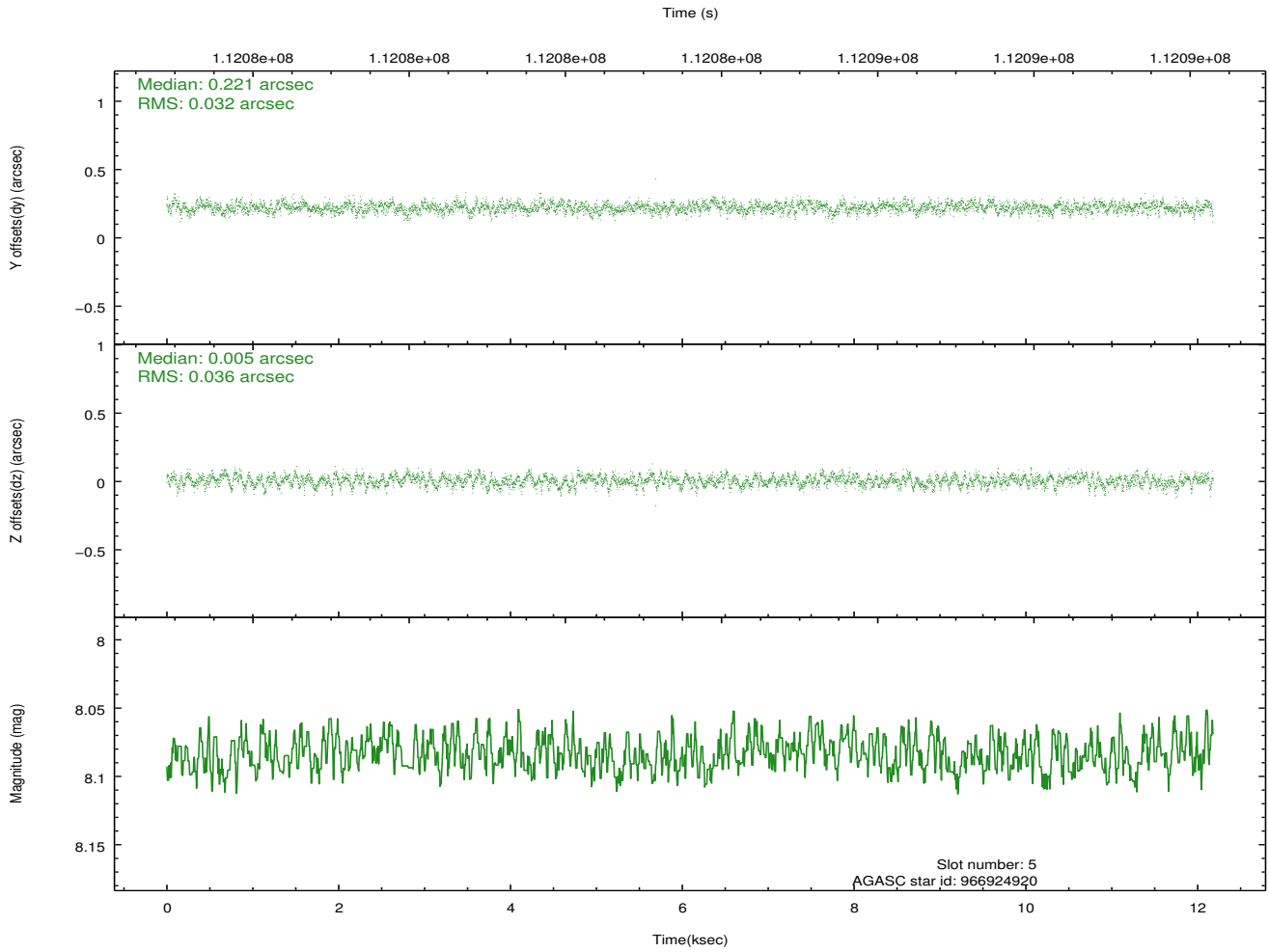
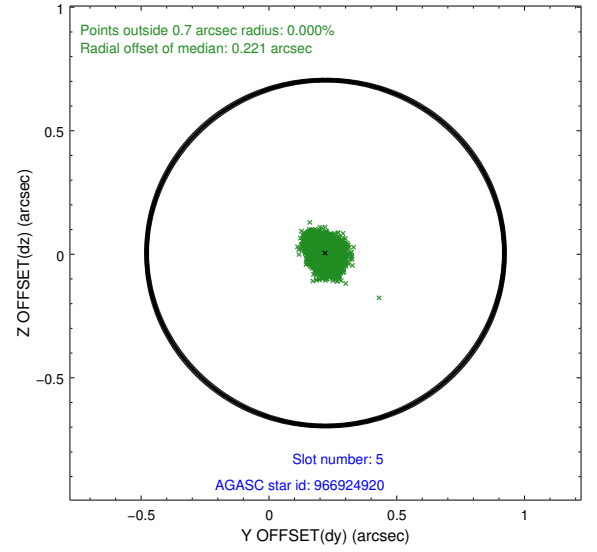
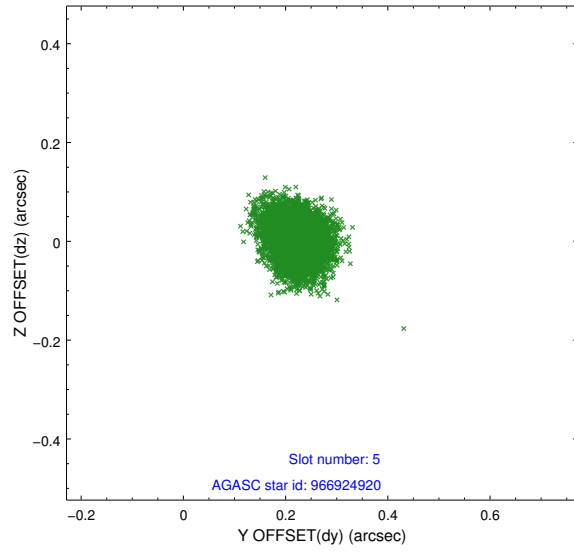
2.4.1 Slot 3



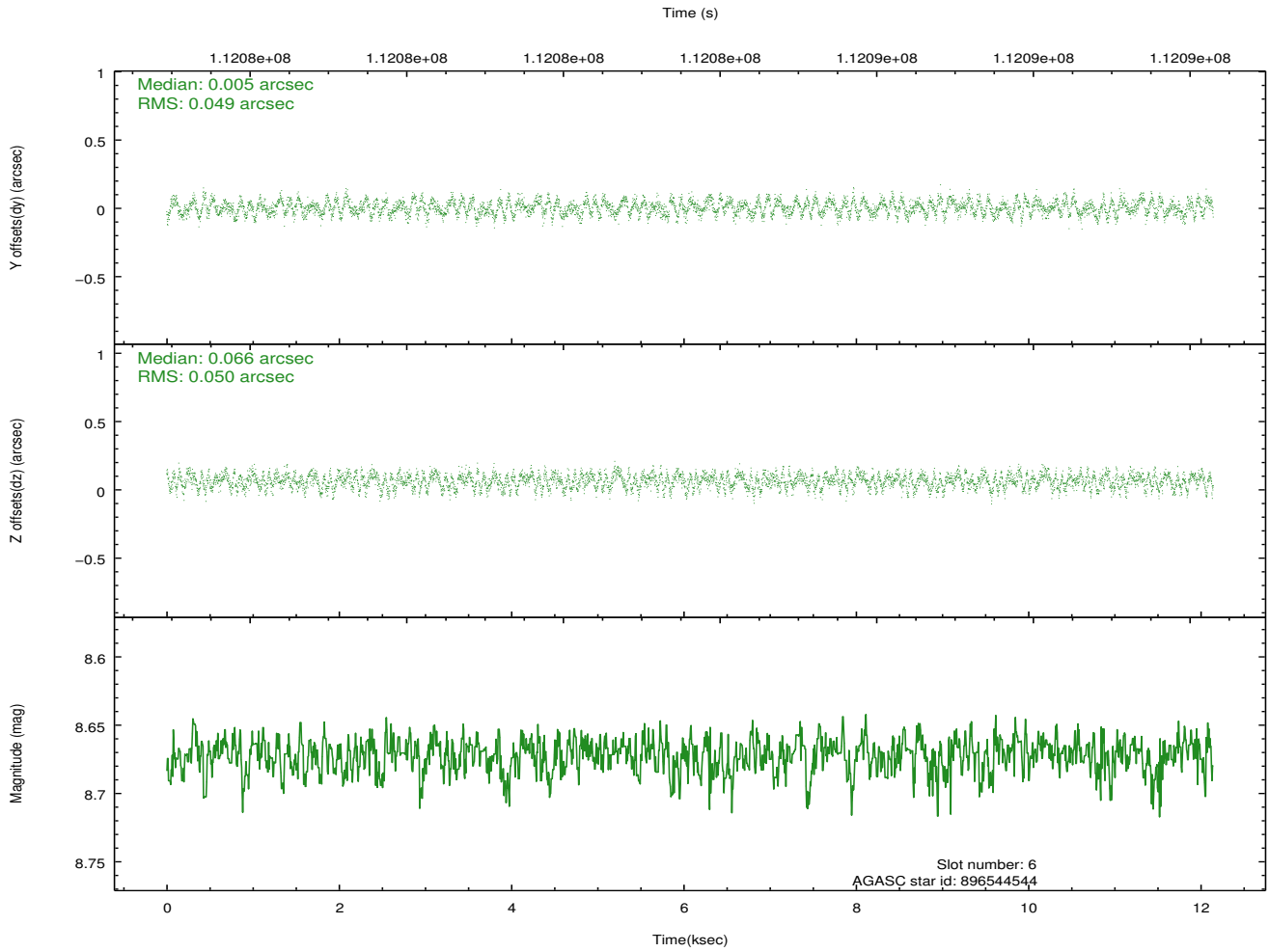
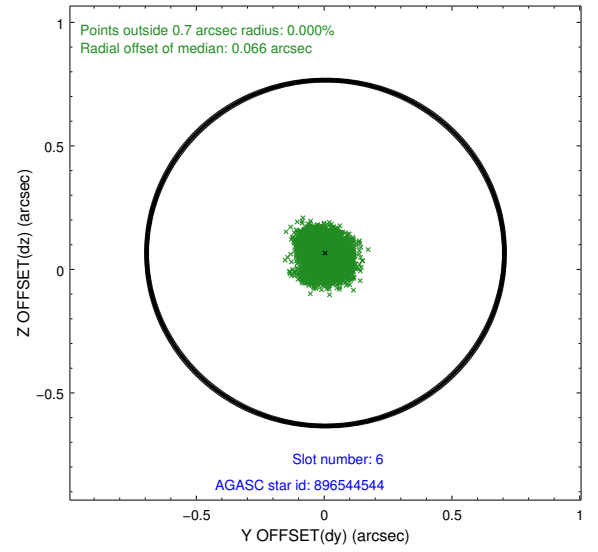
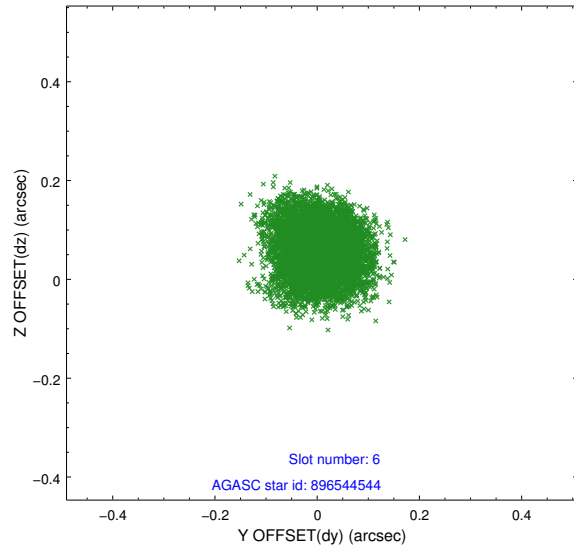
2.4.2 Slot 4



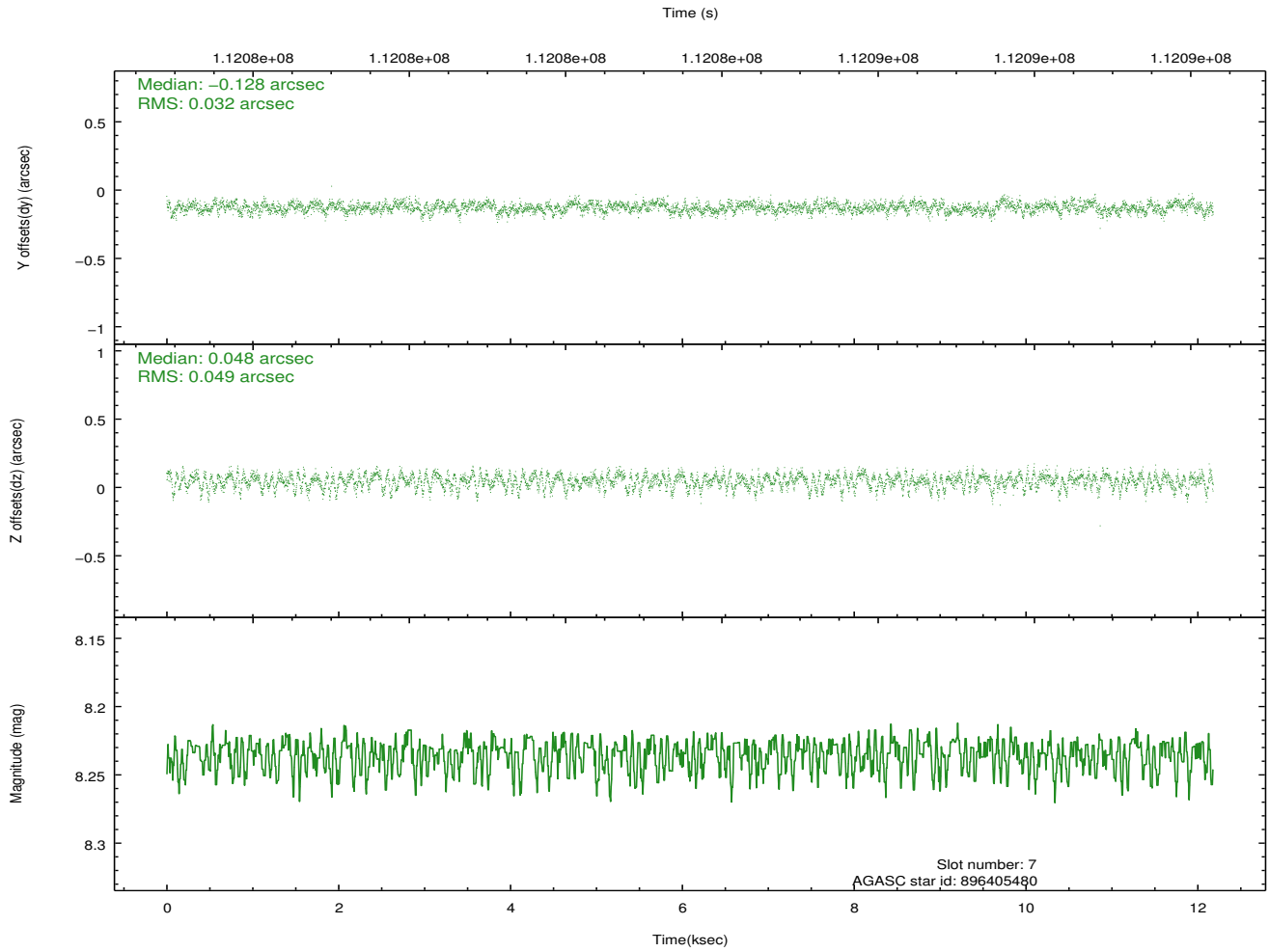
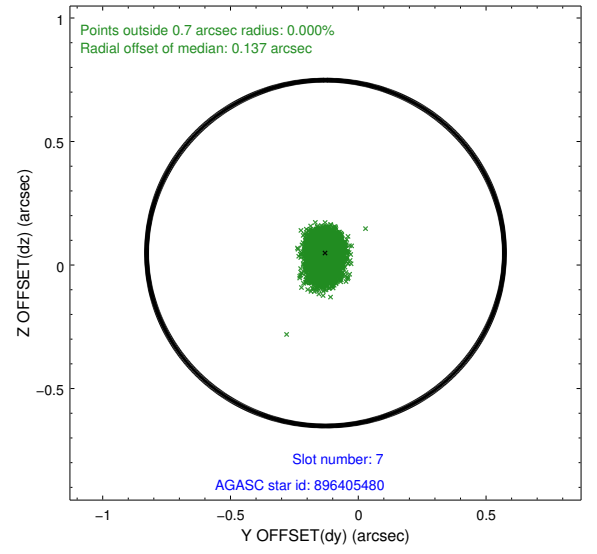
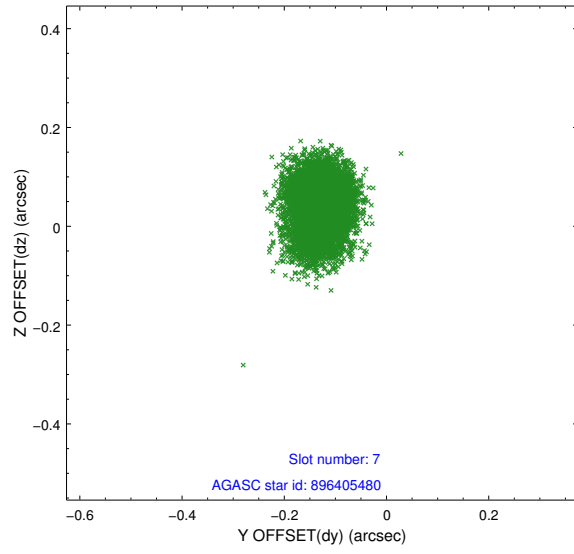
2.4.3 Slot 5



2.4.4 Slot 6

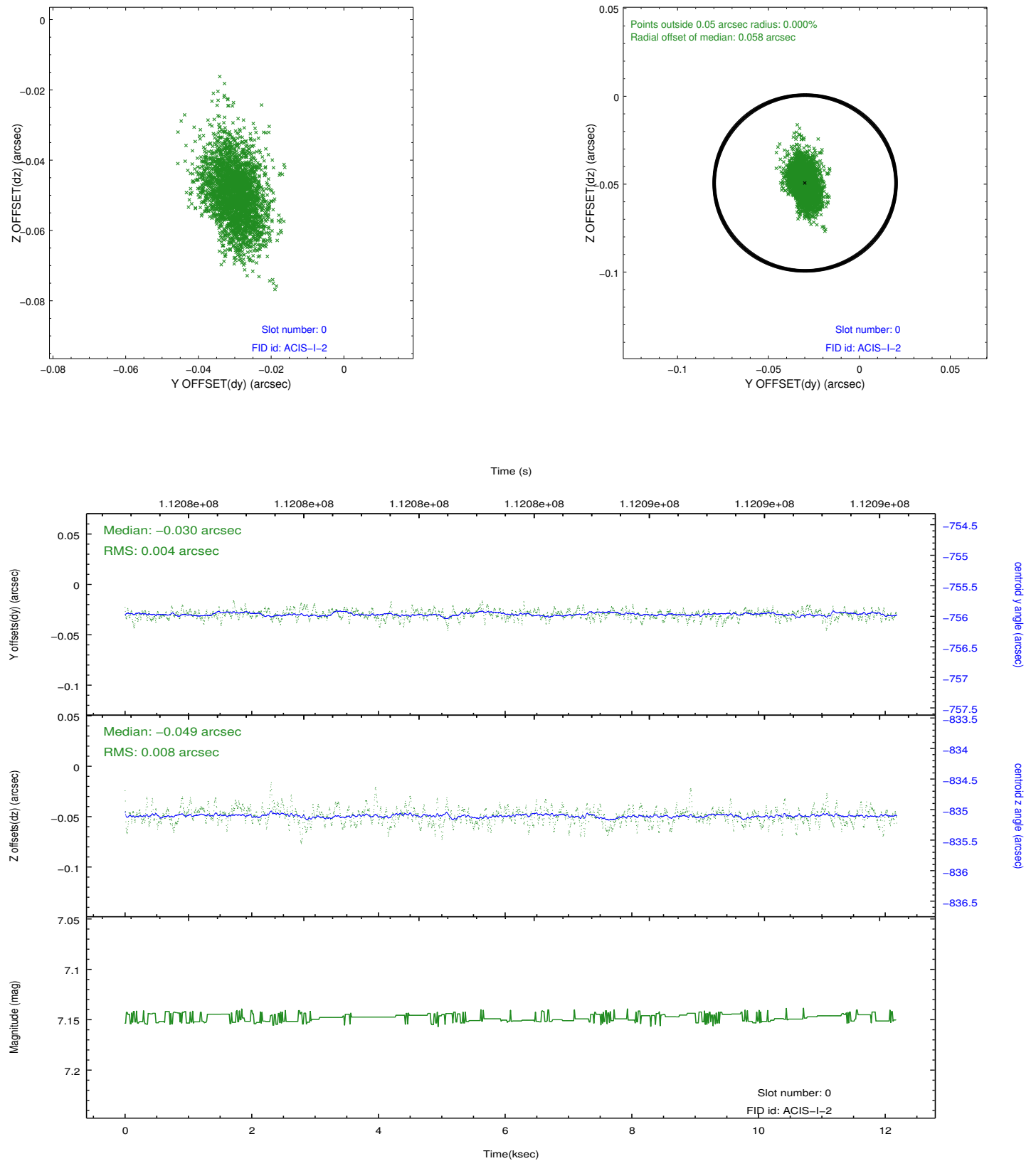


2.4.5 Slot 7

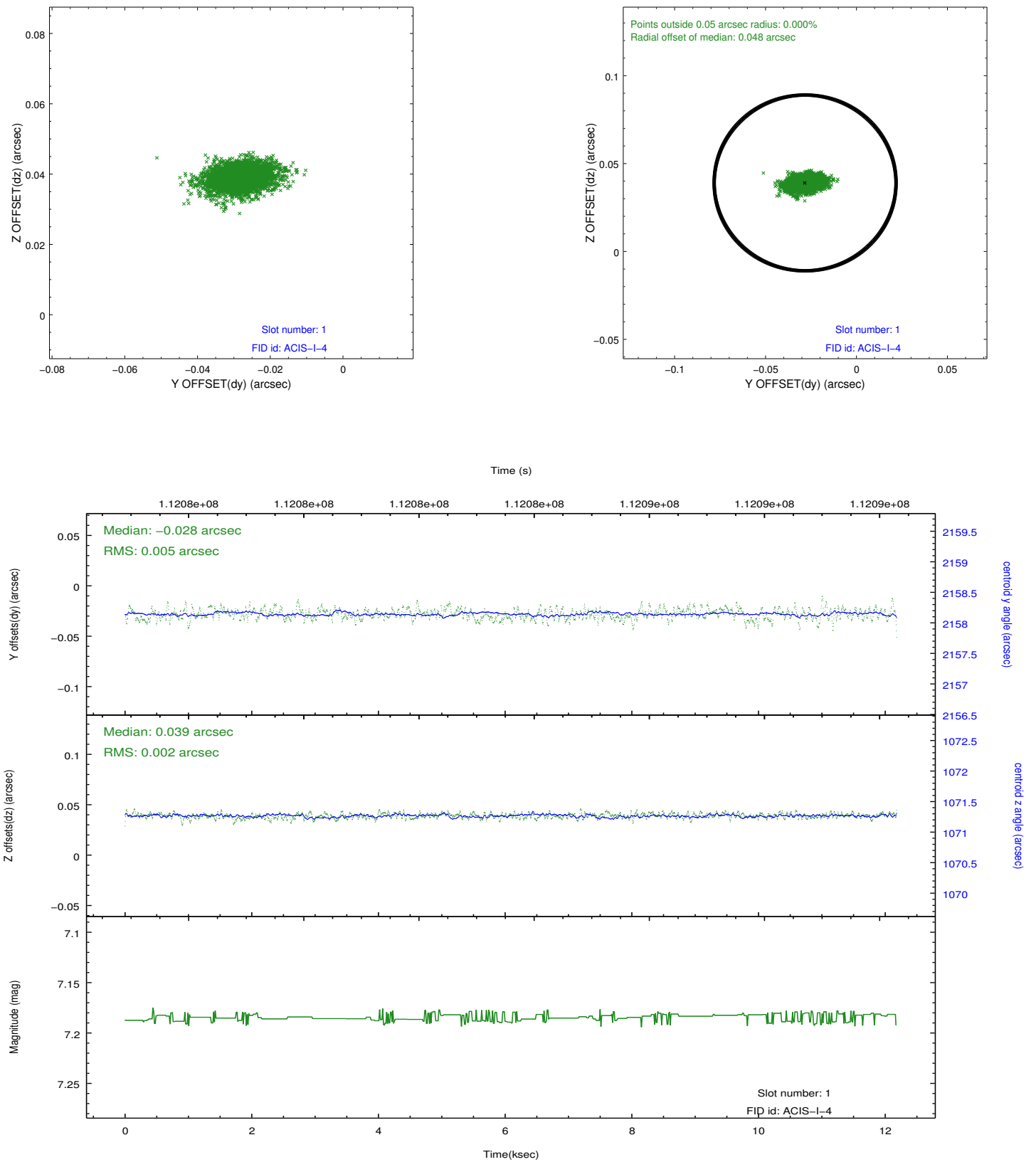


2.5 FID Slots

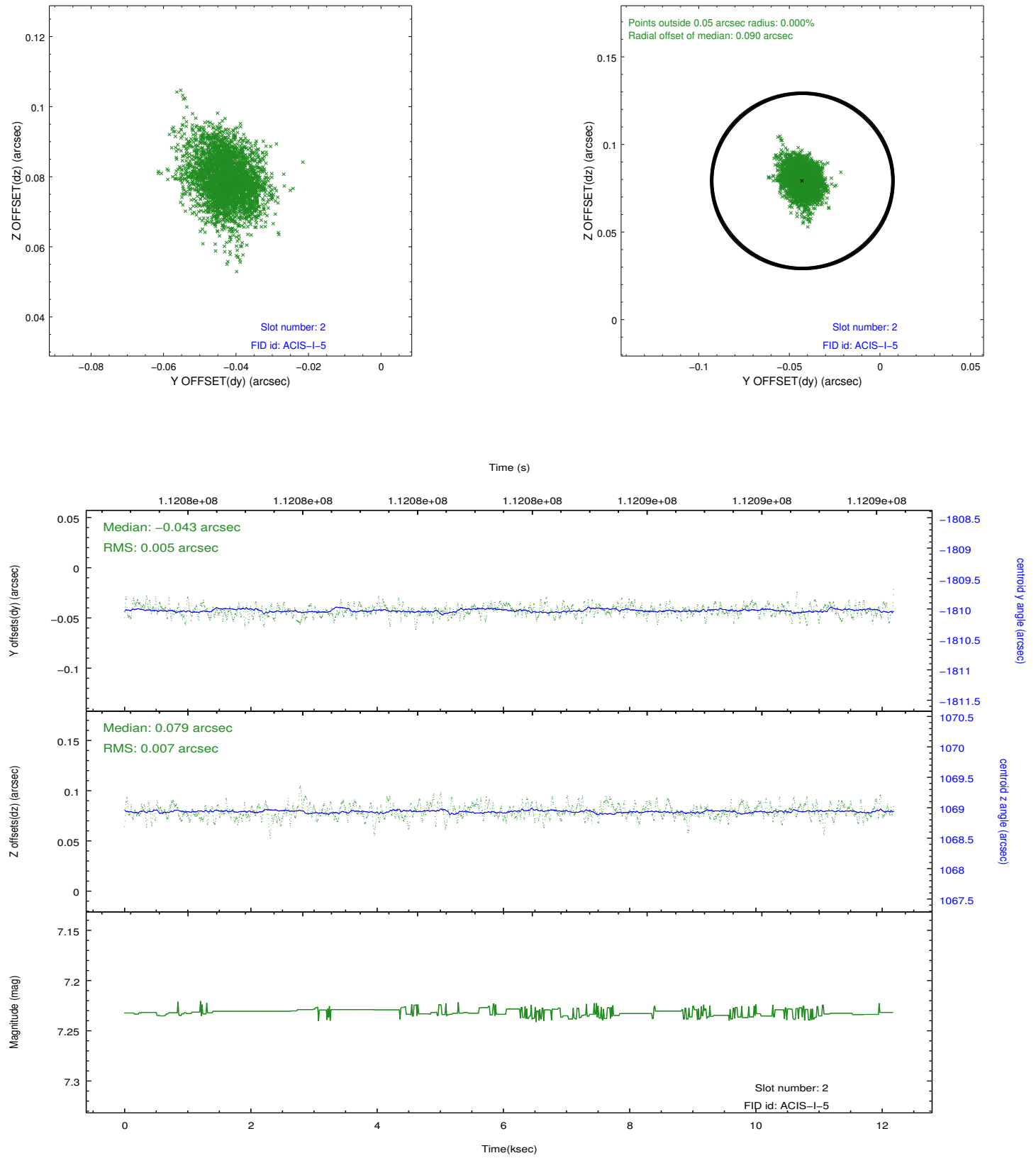
2.5.1 Slot 0



2.5.2 Slot 1



2.5.3 Slot 2



A Summary

A.1 Status

V&V Scientist	Beth Sundheim
V&V Date (YYYY-MM-DD)	2012.09.24
V&V Edition	1
V&V Disposition and Status	OK
V&V Charge Time	11.763

A.2 Comments

Roll preference met.