

V&V Reference Report

L2 ASCDS Version : 7.6.9

Observation 2283 - L2 Version 001
Chandra X-Ray Center

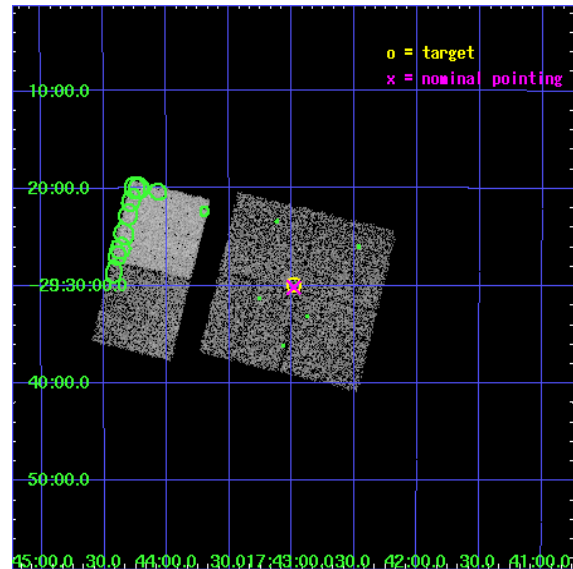
L2 Processing Date : Dec 14 2006

Contents

1	Front	2
2	OBI	3
2.1	OBI	3
2.1.1	Images	3
2.1.2	Bias	3
2.1.3	Parameters	4
2.1.4	Events	4
2.2	Compared Parameters	5
2.3	Aspect	6
2.4	Star Slots	9
2.4.1	Slot 3	9
2.4.2	Slot 4	10
2.4.3	Slot 5	11
2.4.4	Slot 6	12
2.4.5	Slot 7	13
2.5	FID Slots	14
2.5.1	Slot 0	14
2.5.2	Slot 1	15
2.5.3	Slot 2	16
3	Point Sources	17
A	Summary	18
A.1	Status	18
A.2	Comments	18

1 Front

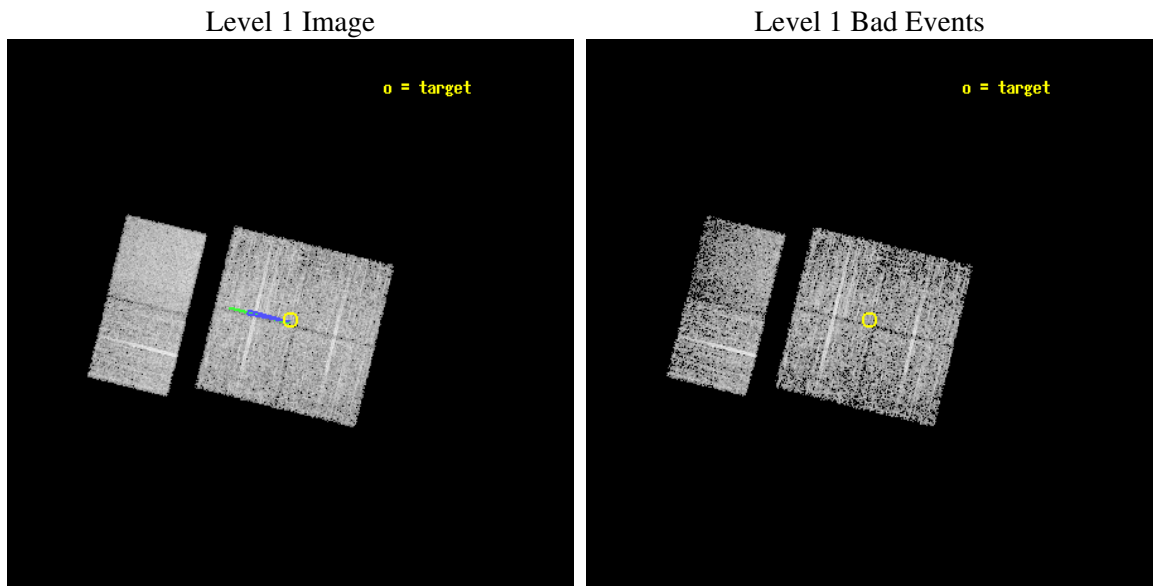
seq_num	900110
obs_id	2283
title	CHANDRA SURVEY OF THE GALACTIC RIDGE AROUND THE MILKY WAY CENTER
observer	Prof. Q. Daniel Wang
object	GCS 27
dtcycle	0
cycle	P
ra_targ	265.7468
dec_targ	-29.4987
ra_nom	265.74590634347
dec_nom	-29.503360413872
roll_nom	283.80725442628
revision	2
ontime	11760.000010952
livetime	11611.087809792
ontime0	11760.000010952
ontime1	11760.000010952
ontime2	11760.000010952
ontime3	11760.000010952
ontime6	11760.000010952
ontime7	11760.000010952
l2events	45829



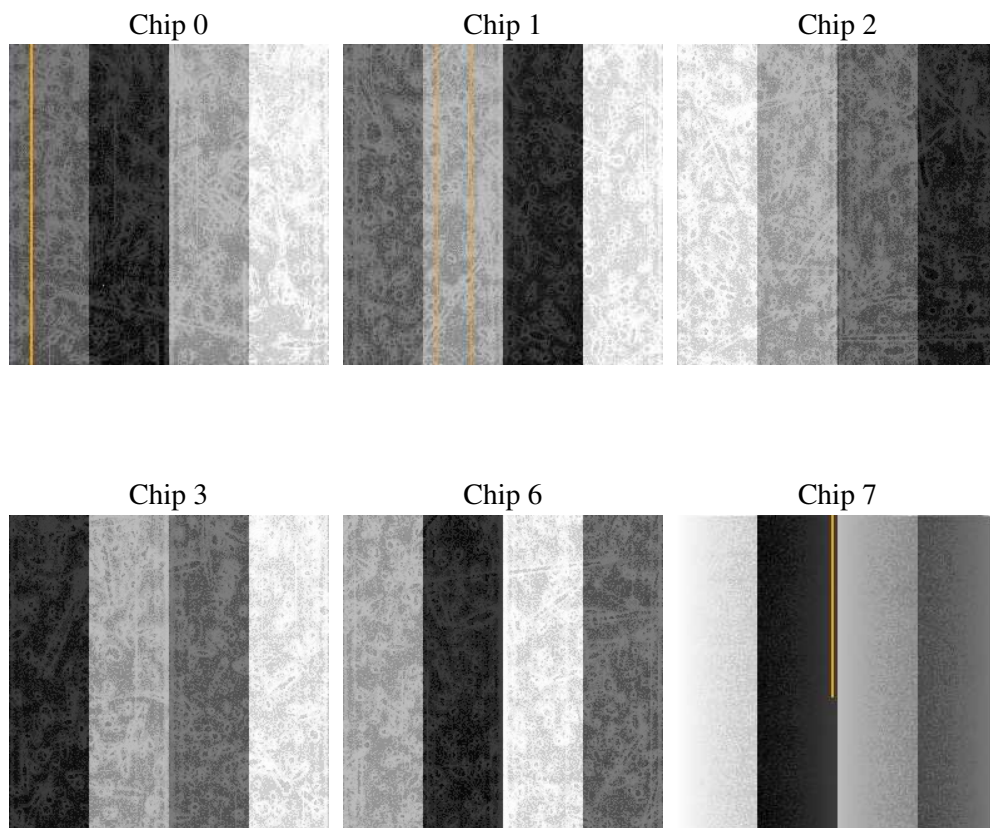
2 OBI

2.1 OBI

2.1.1 Images



2.1.2 Bias



2.1.3 Parameters

obi_num	0
ascdsver	7.6.9
caldbver	3.2.4
date	2006-12-14T15:15:27
revision	2

sched_exp_time	12000.000000
ontime	11764.855240583
ontime0	11764.855240583
ontime1	11764.855240583
ontime2	11764.855240583
ontime3	11764.855240583
ontime6	11764.855240583
ontime7	11764.855240583
l1events	193736

2.1.4 Events

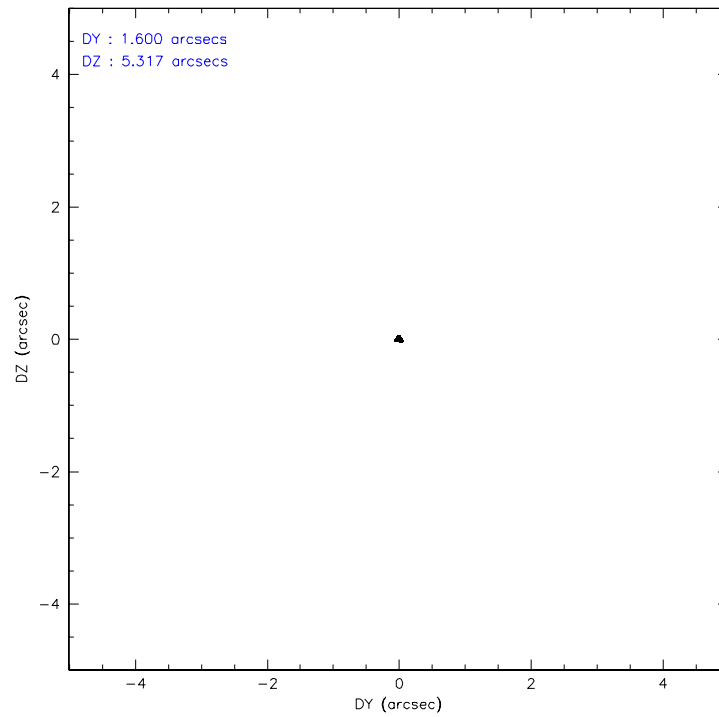
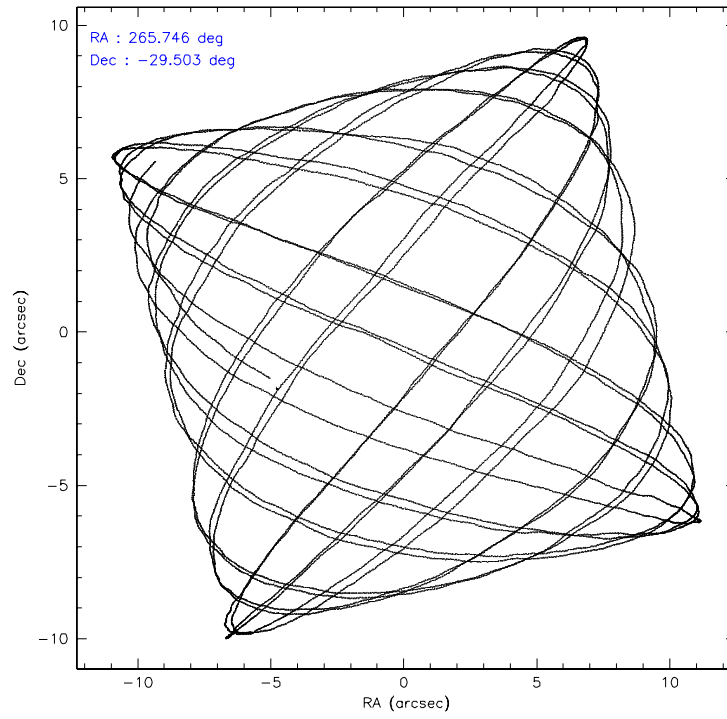
	ccd 0	ccd 1	ccd 2	ccd 3	ccd 6	ccd 7
level 1 events	29019	28614	30798	32686	33570	39049
rejected events	23356	23241	24830	27199	27010	19173
rejected %	80%	81%	80%	83%	80%	49%

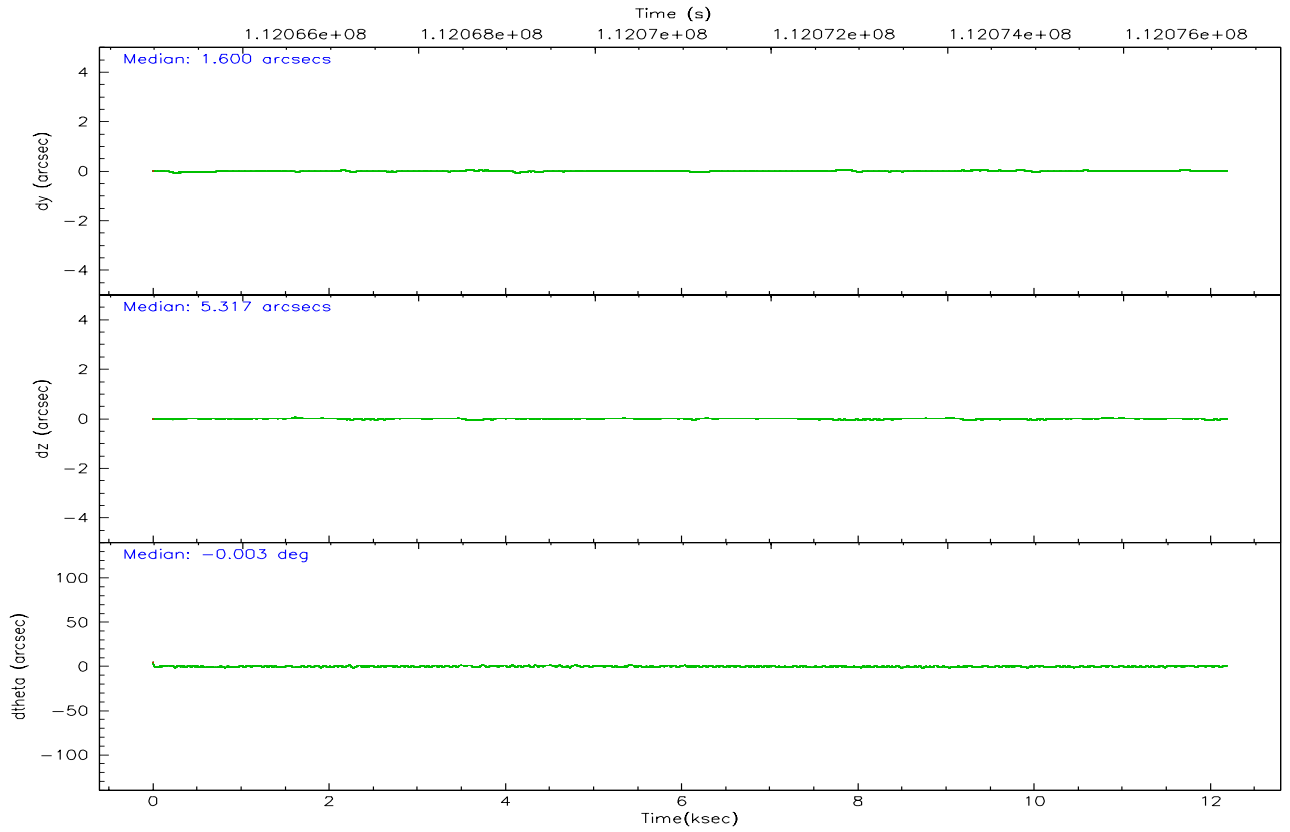
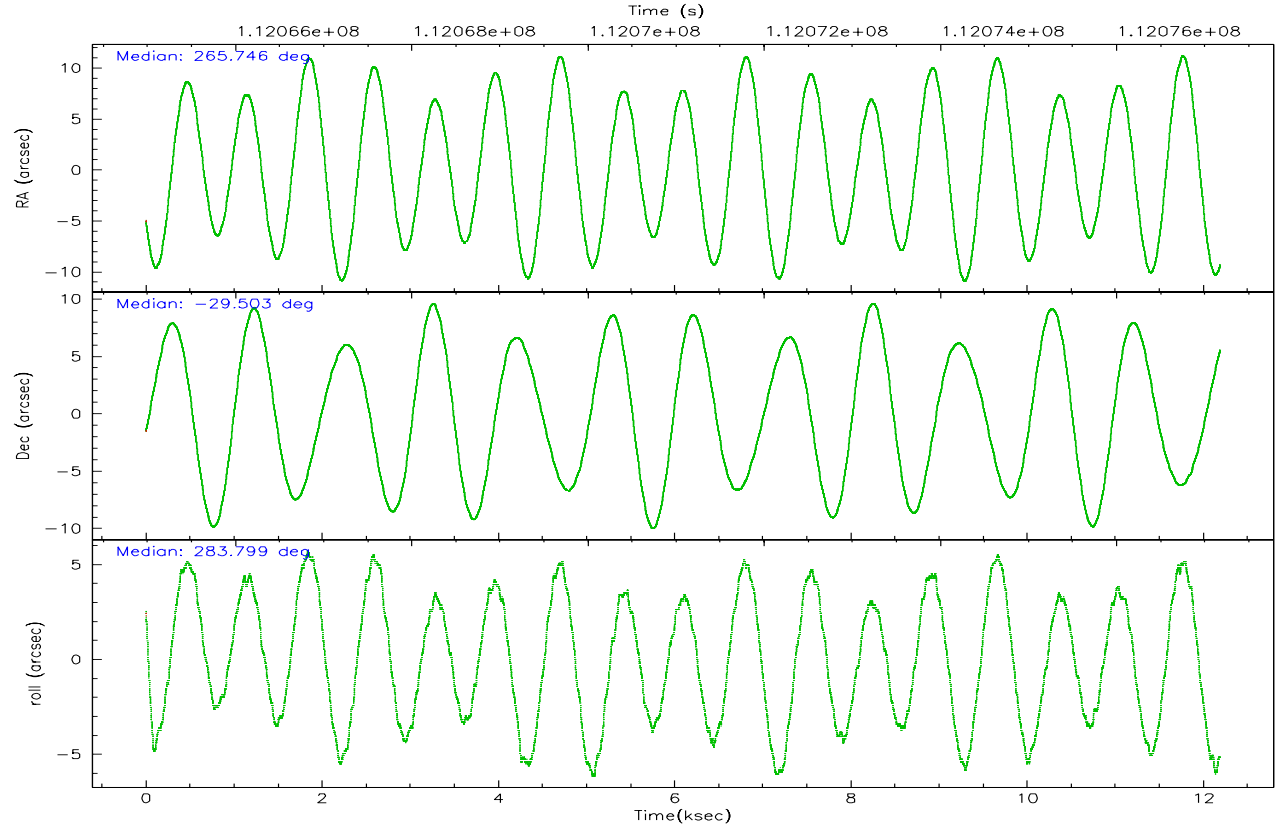
	ccd 0	ccd 1	ccd 2	ccd 3	ccd 6	ccd 7
grade 0 events	2730	2458	3053	2541	3077	1390
	9%	8%	9%	7%	9%	3%
grade 1 events	31	19	16	27	28	23
	0%	0%	0%	0%	0%	0%
grade 2 events	1145	1097	1080	1083	1286	5081
	3%	3%	3%	3%	3%	13%
grade 3 events	471	454	461	456	585	1132
	1%	1%	1%	1%	1%	2%
grade 4 events	460	455	481	480	509	1133
	1%	1%	1%	1%	1%	2%
grade 5 events	1185	1353	1078	1424	1470	3382
	4%	4%	3%	4%	4%	8%
grade 6 events	862	912	896	929	1106	11149
	2%	3%	2%	2%	3%	28%
grade 7 events	22135	21866	23733	25746	25509	15759
	76%	76%	77%	78%	75%	40%

2.2 Compared Parameters

Parameter	Planned	Actual	Parameter	Planned	Actual
Instrument	ACIS	ACIS	Obspar format version number	6	6
Detector	ACIS-012367	ACIS-012367	Obspar file type	PREDICTED	ACTUAL
Grating	NONE	NONE	Obspar update status	NONE	UPDATED
Data mode	FAINT	FAINT	Number of optional ACIS chips dropped	0	0
Observation mode	POINTING	POINTING	On-chip summing requested	N	N
Pointing RA	265.724081	265.7459063434709	Subarray requested	NONE	NONE
Pointing Dec	-29.483587	-29.5033604138725	Alternating exposures requested	N	N
Pointing Roll	283.587823	283.8072544262777	Primary exposure time	0.000000	3.2
Roll angle	283.600000	283.600000			
Roll tolerance	2.000000	2.000000			
Roll constraint allows 180D rotation	N	N			
SIM focus pos (mm)	-0.782348	-0.7809083437167272			
SIM defocus (mm)	0	0.001439871863259334			
SIM translation stage pos (mm)	-233.592463	-233.5874344608287			
SIM translation stage offset (mm)	0	-0.005018542100998502			
Observation start time	112065176.184000	112064799.6494			
Observation start date	2001-07-21T01:11:52	2001-07-21T01:06:39			
Observation end time	112077176.184000	112077309.77489			
Observation end date	2001-07-21T04:31:52	2001-07-21T04:35:09			
Read mode	TIMED	TIMED			

2.3 Aspect



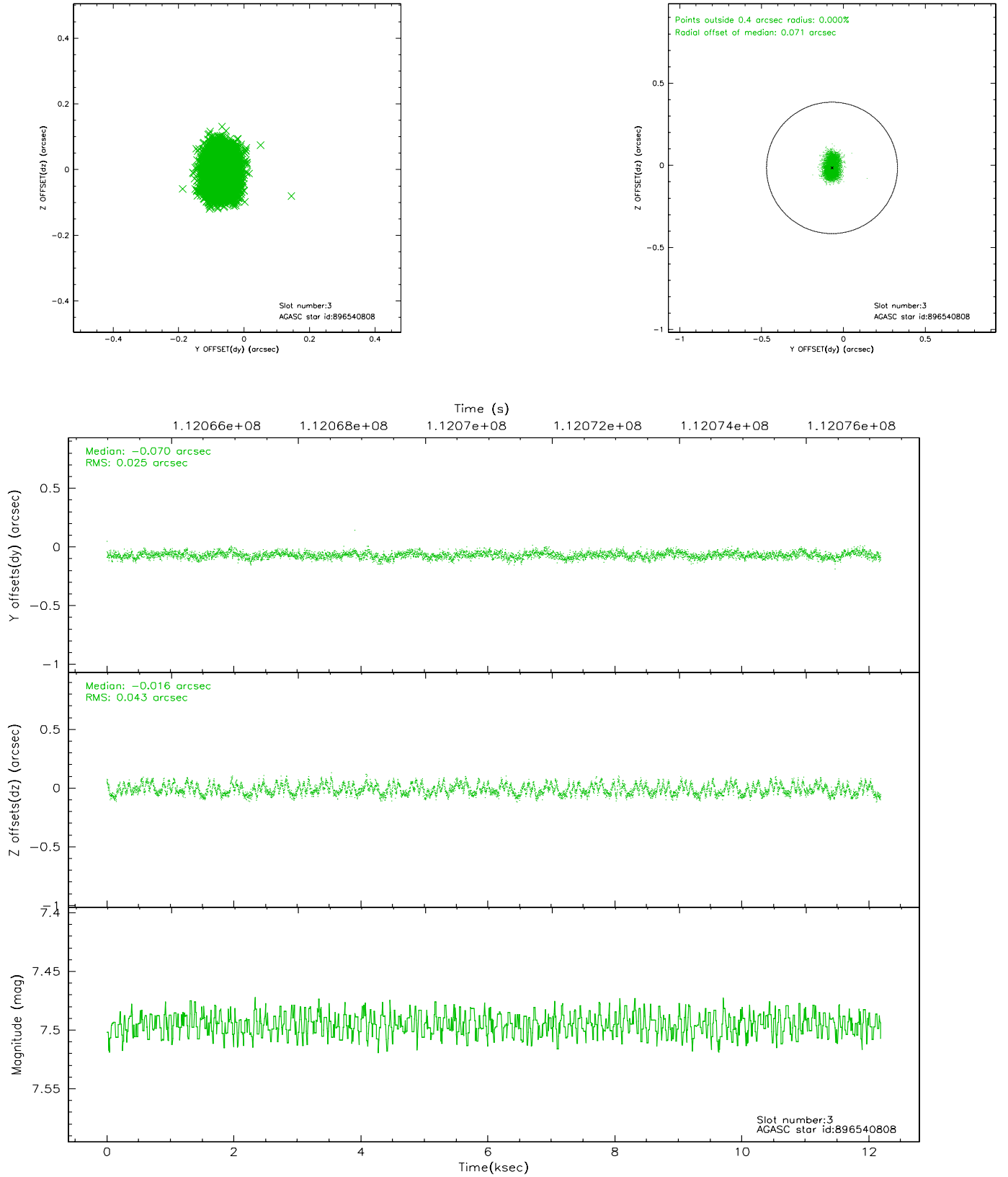


Slot Statistics

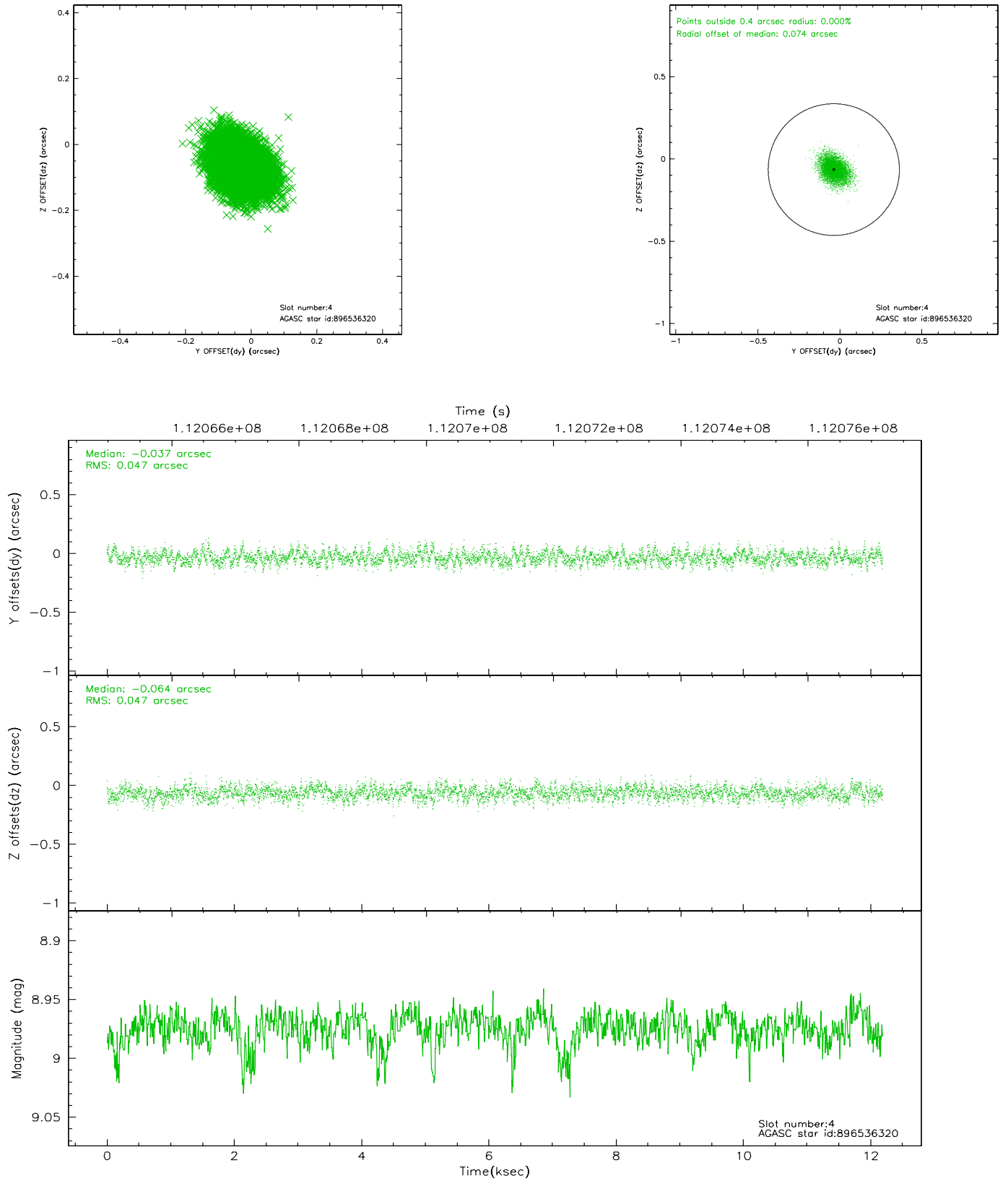
slot	status	id	mag	n_pts	med_dy	med_dz	dr1	dr2	ra	dec	mean_y	mean_z
0	FID	ACIS-I-2	7.15	2974	-0.015	-0.026	0.008	0.015	0.000000	0.000000	-755.95	-835.06
1	FID	ACIS-I-4	7.19	2974	-0.069	0.026	0.005	0.009	0.000000	0.000000	2157.85	1070.99
2	FID	ACIS-I-5	7.24	2974	-0.016	0.069	0.008	0.014	0.000000	0.000000	-1809.27	1069.31
3	GUIDE	896540808	7.50	5946	-0.070	-0.016	0.054	0.086	265.985401	-29.308604	-418.38	945.69
4	GUIDE	896536320	8.97	5941	-0.037	-0.064	0.071	0.116	266.369048	-29.307026	-136.60	2116.73
5	GUIDE	896403224	8.28	5947	0.140	0.050	0.069	0.114	265.612825	-29.438915	-237.39	-300.32
6	GUIDE	966787648	8.90	5946	0.091	-0.001	0.073	0.118	265.297931	-30.077843	1770.78	-1792.85
7	GUIDE	896402080	9.40	5941	-0.126	0.034	0.082	0.136	264.880091	-29.164813	-1728.54	-2311.49

2.4 Star Slots

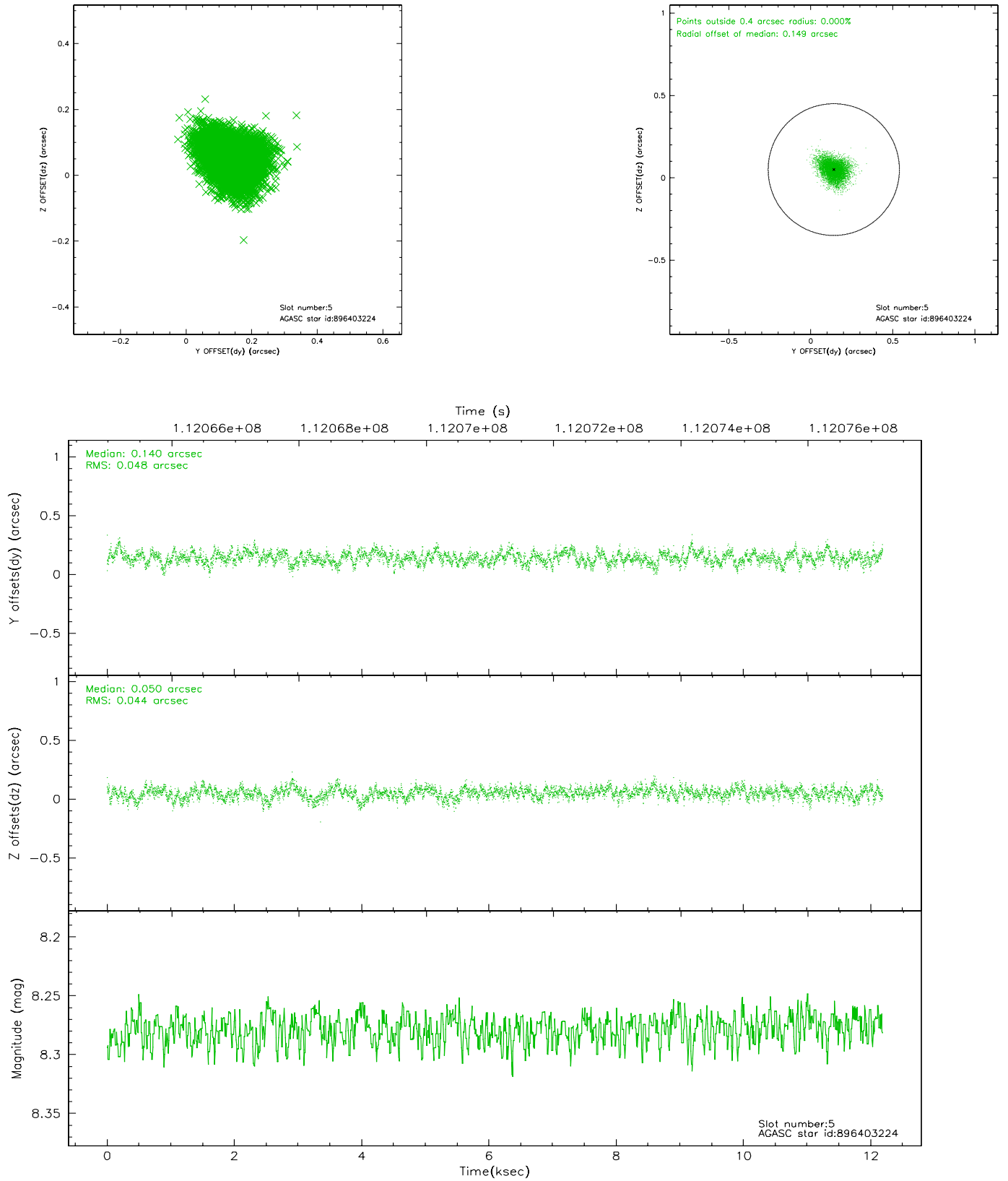
2.4.1 Slot 3



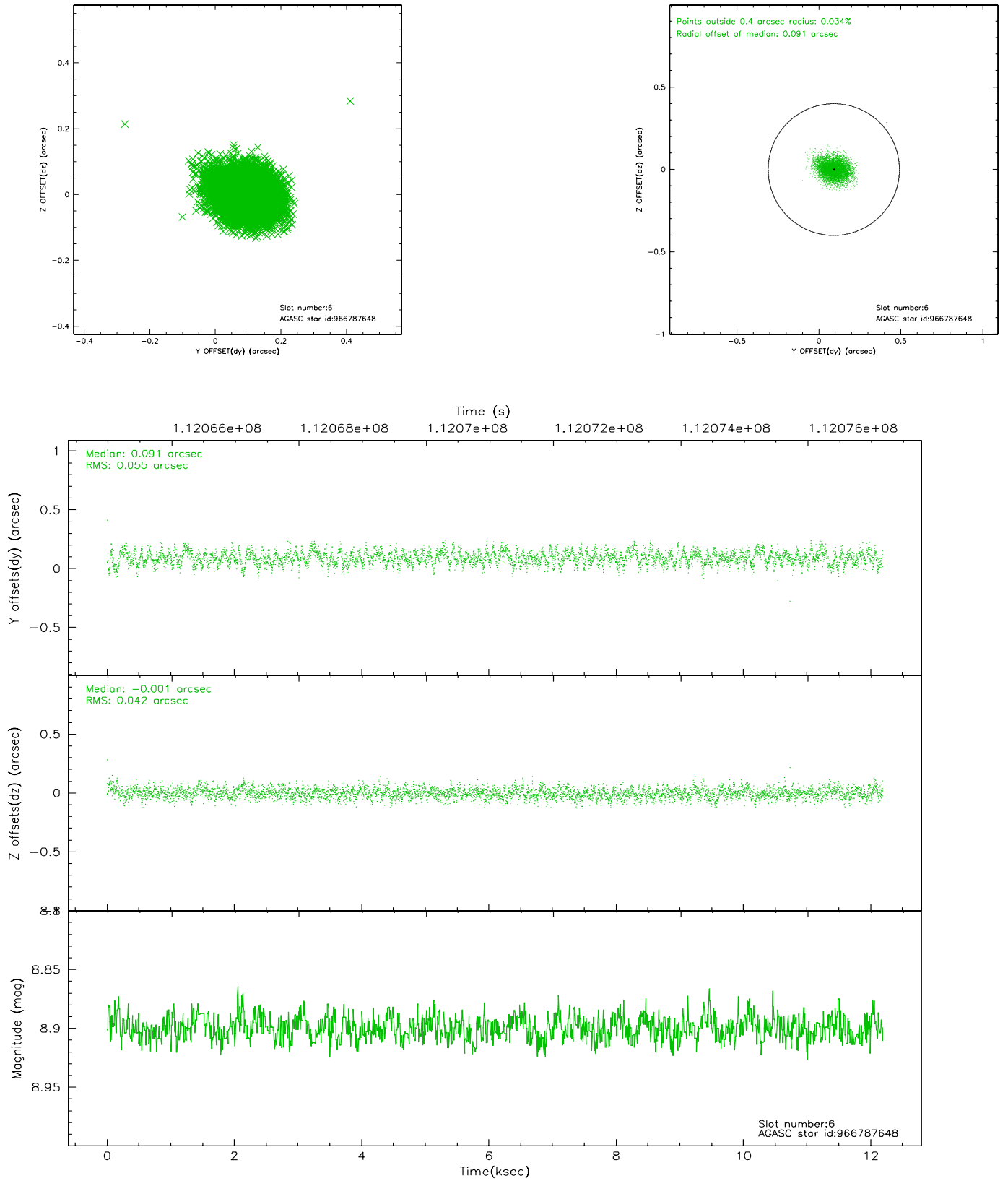
2.4.2 Slot 4



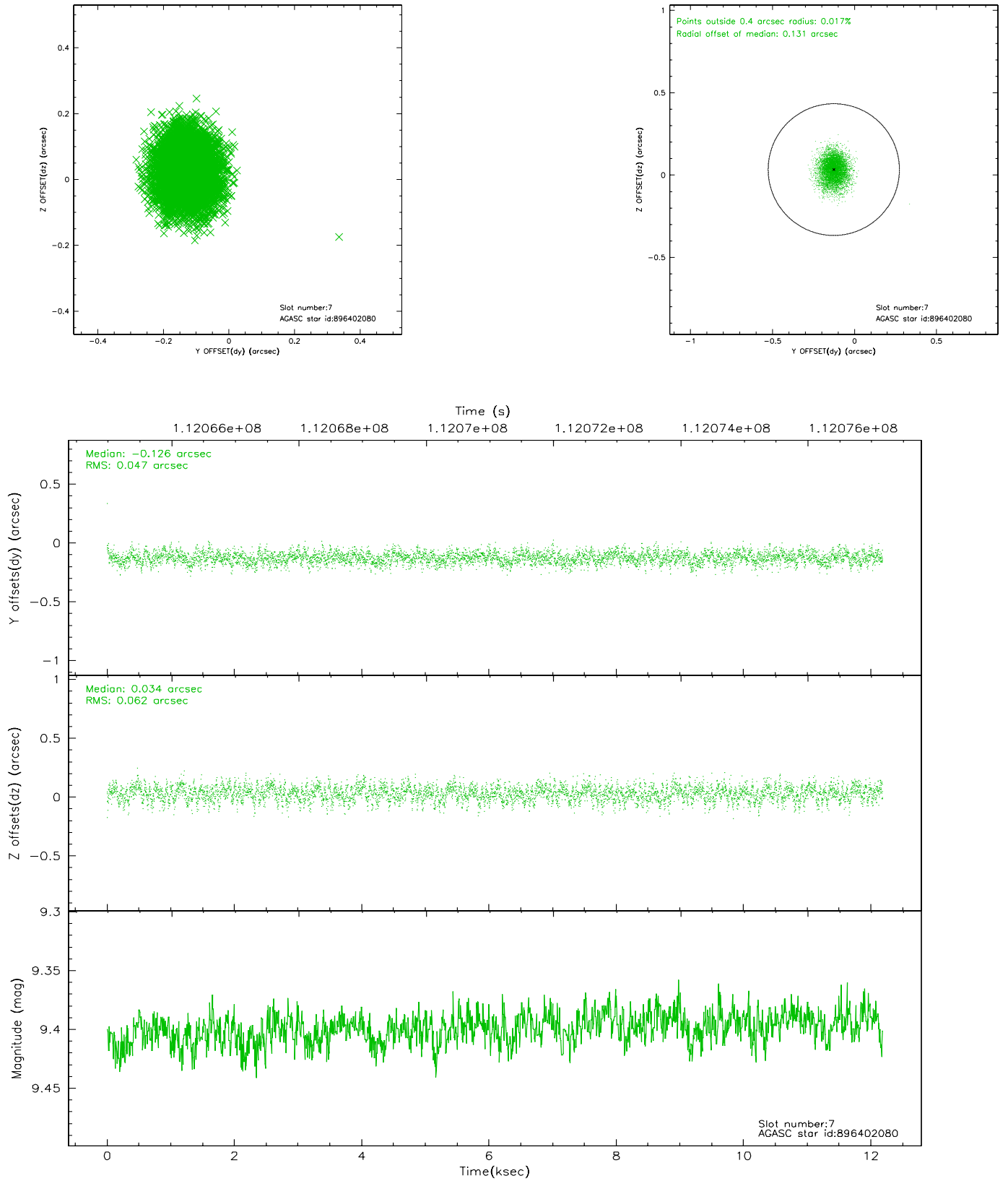
2.4.3 Slot 5



2.4.4 Slot 6

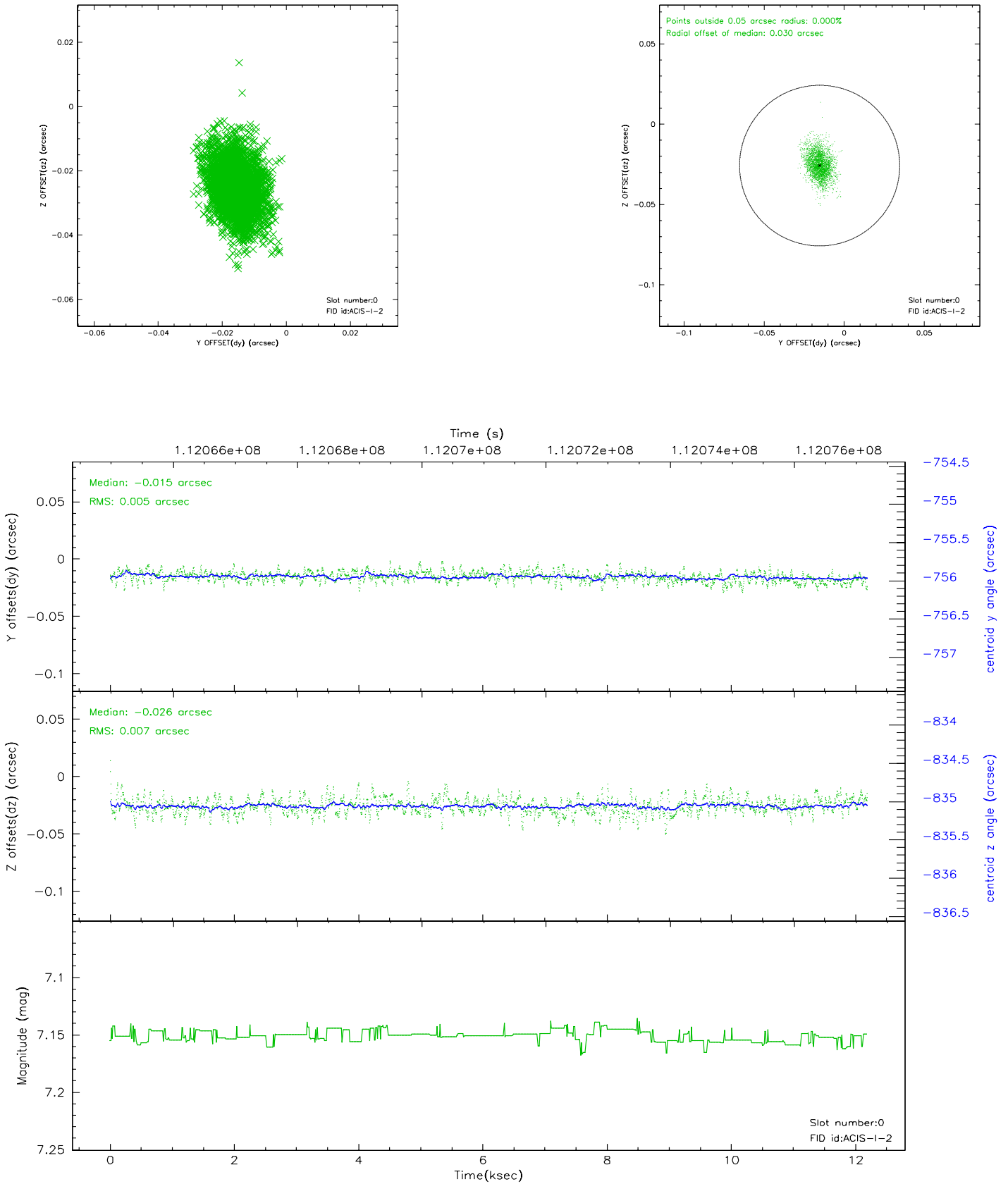


2.4.5 Slot 7

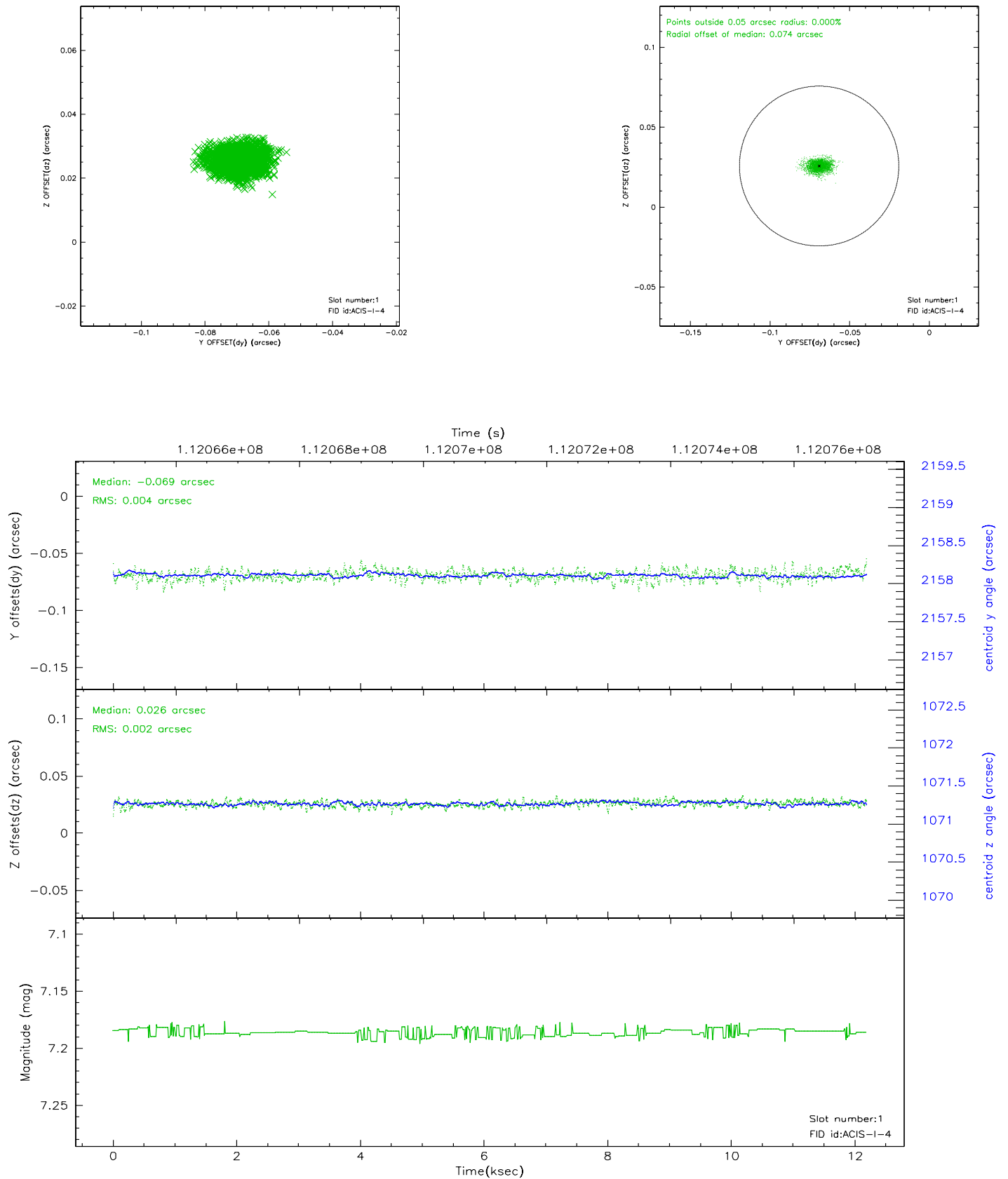


2.5 FID Slots

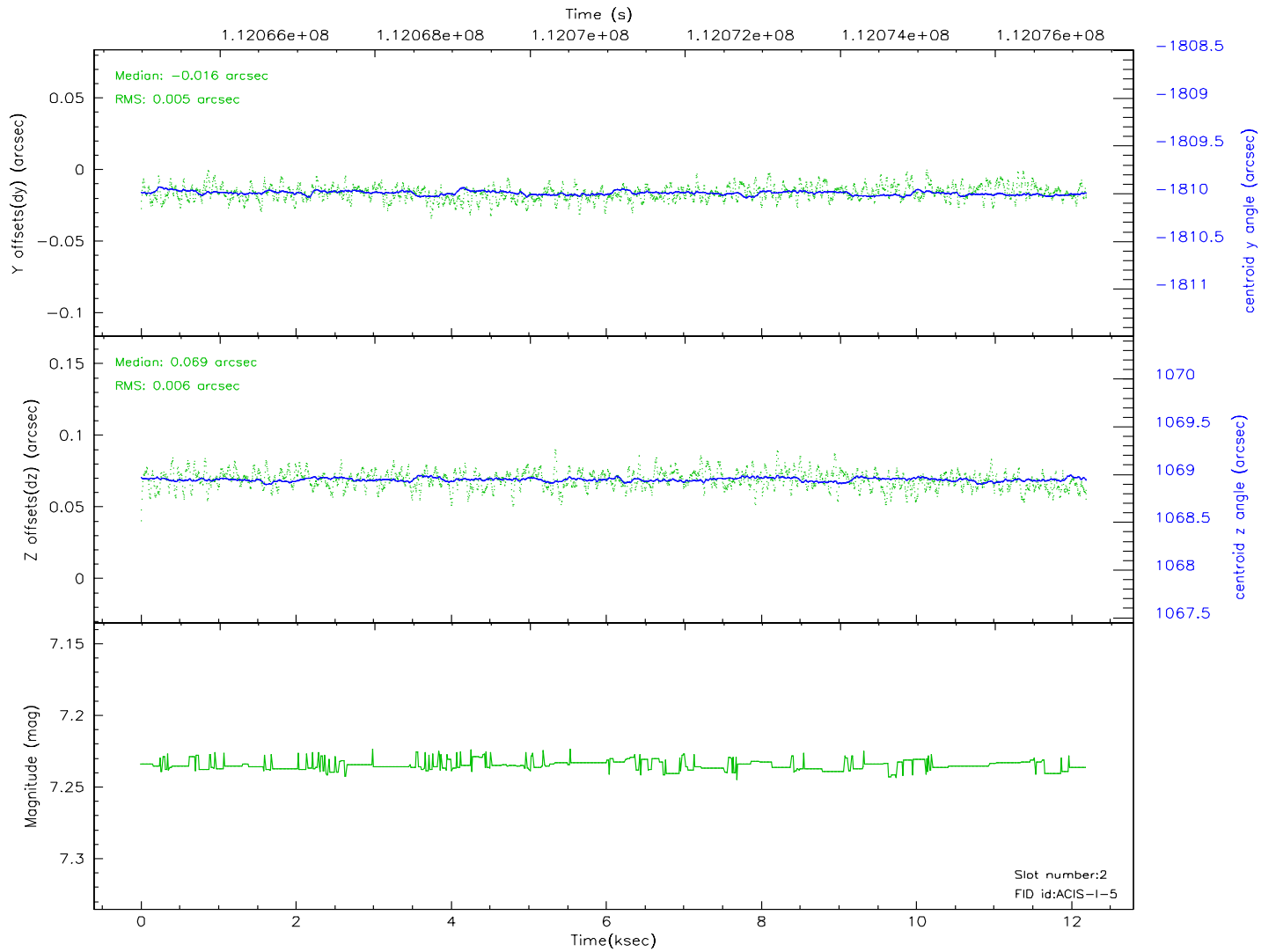
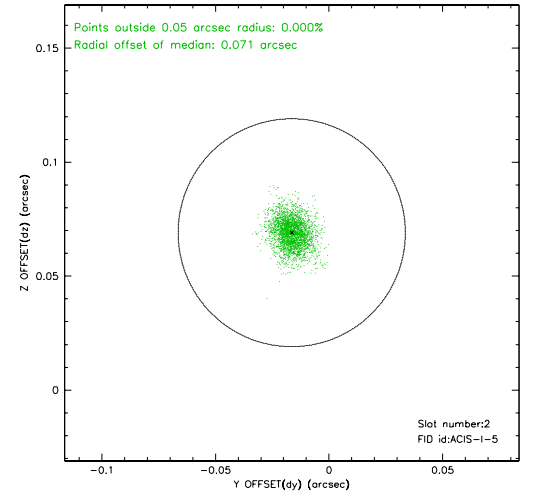
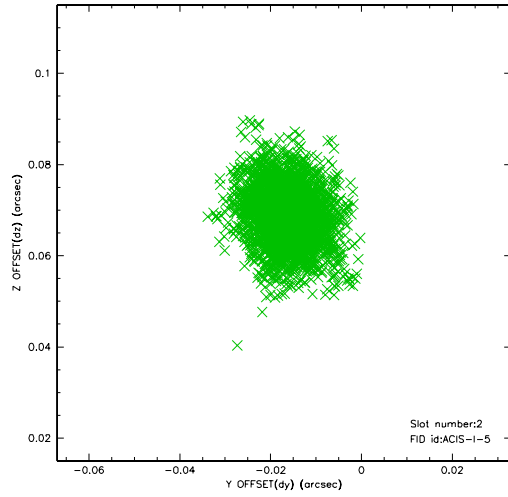
2.5.1 Slot 0



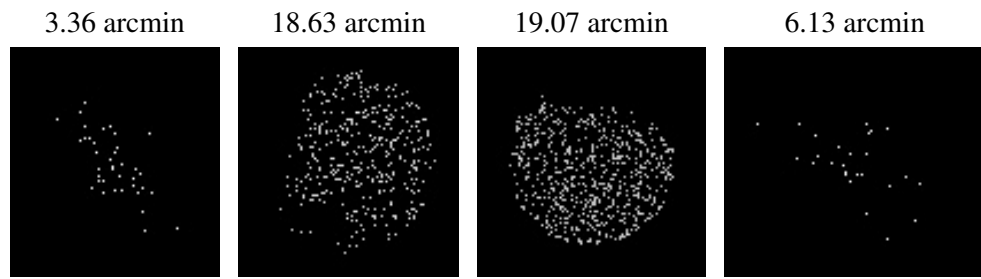
2.5.2 Slot 1



2.5.3 Slot 2



3 Point Sources



A Summary

A.1 Status

V&V Scientist	Beth Sundheim
V&V Date (YYYY-MM-DD)	2006.12.14
V&V Edition	1
V&V Disposition and Status	OK
V&V Charge Time	11.8

A.2 Comments

Roll constraint satisfied.