

V&V Reference Report

L2 ASCDS Version : 8.4.5

Observation 2281 - L2 Version 3
Chandra X-Ray Center

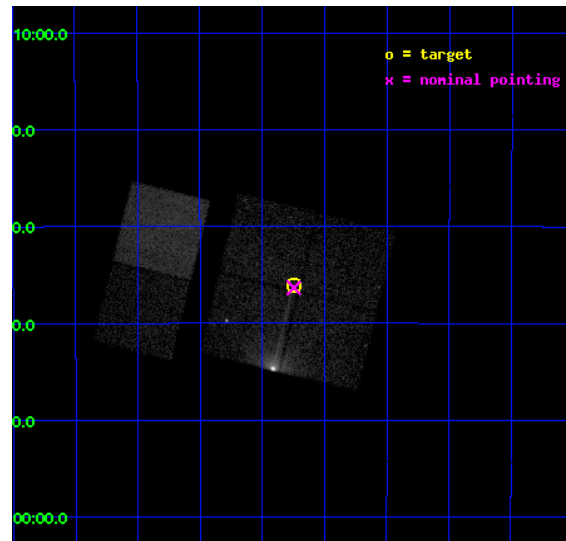
L2 Processing Date : Sep 20 2012

Contents

1	Front	2
2	OBI	3
2.1	OBI	3
2.1.1	Images	3
2.1.2	Bias	3
2.1.3	Parameters	4
2.1.4	Events	4
2.2	Compared Parameters	5
2.3	Aspect	6
2.4	Star Slots	9
2.4.1	Slot 3	9
2.4.2	Slot 4	10
2.4.3	Slot 5	11
2.4.4	Slot 6	12
2.4.5	Slot 7	13
2.5	FID Slots	14
2.5.1	Slot 0	14
2.5.2	Slot 1	15
2.5.3	Slot 2	16
A	Summary	17
A.1	Status	17
A.2	Comments	17

1 Front

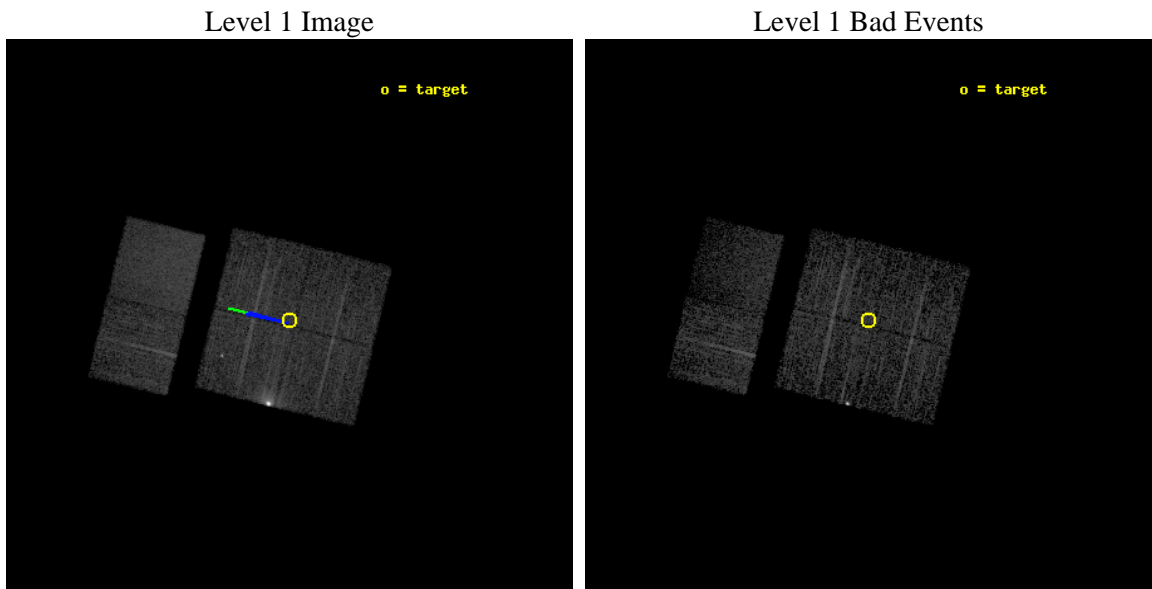
seq_num	900108	Sequence number
obs_id	2281	Observation id
title	CHANDRA SURVEY OF THE GALACTIC RIDGE AROUND THE MILKY WAY CENTER	P
observer	Prof. Q. Daniel Wang	Principal investigator
object	GCS 26	Source name
dtcycle	0	
cycle	P	events from which exps? Prim/Second/Both
ra_targ	265.9376	Observer's specified target RA [deg]
dec_targ	-29.6011	Observer's specified target Dec [deg]
ra_nom	265.93675423589	Nominal RA [deg]
dec_nom	-29.605785258803	Nominal Dec [deg]
roll_nom	283.80727467119	Nominal Roll [deg]
revision	3	Processing version of data
ontime	11760.000010937	Sum of GTIs [s]
livetime	11611.087809777	Livetime [s]
ontime0	11760.000010937	Sum of GTIs [s]
ontime1	11760.000010937	Sum of GTIs [s]
ontime2	11760.000010937	Sum of GTIs [s]
ontime3	11760.000010937	Sum of GTIs [s]
ontime6	11760.000010937	Sum of GTIs [s]
ontime7	11760.000010937	Sum of GTIs [s]
l2events	92172	Number of level 2 events



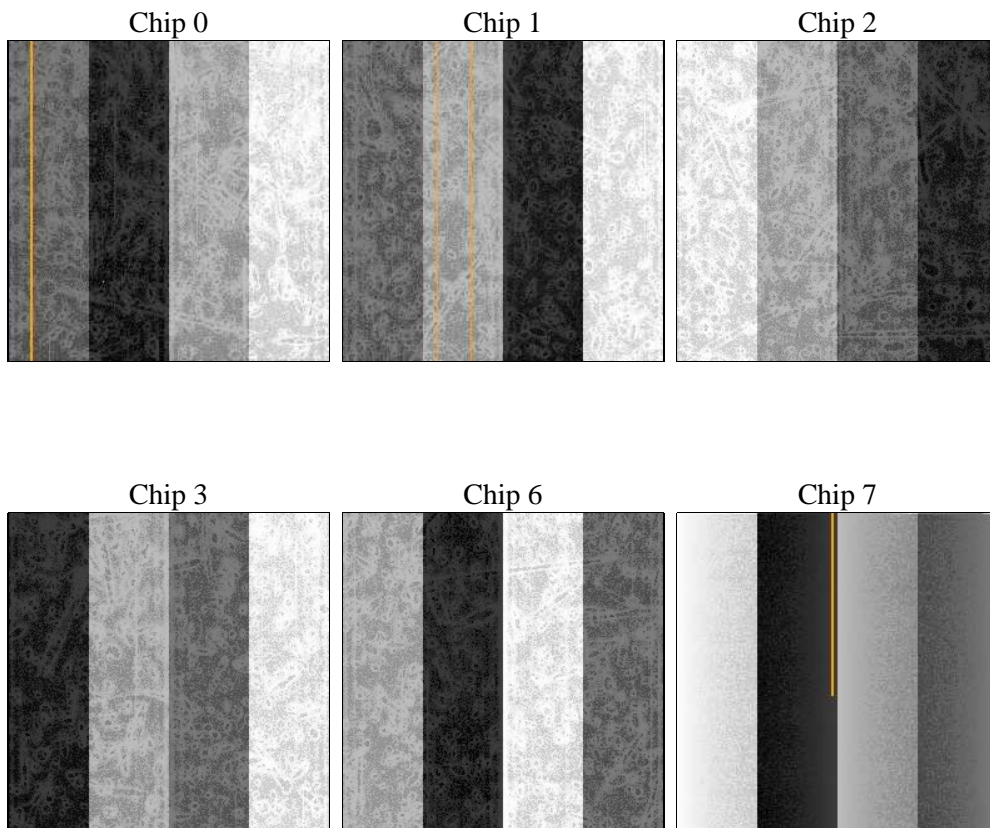
2 OBI

2.1 OBI

2.1.1 Images



2.1.2 Bias



2.1.3 Parameters

obi_num	0	Obi number	sched_exp_time	12000.000000	[s] Scheduled observation exposure time
ascdsver	8.4.5	Processing system revision	ontime	11760.000010937	Sum of GTIs [s]
caldsver	4.5.1.1	 	ontime0	11760.000010937	Sum of GTIs [s]
date	2012-09-20T19:35:09	Date and time of file creation	ontime1	11760.000010937	Sum of GTIs [s]
revision	3	Processing version of data	ontime2	11760.000010937	Sum of GTIs [s]
			ontime3	11760.000010937	Sum of GTIs [s]
			ontime6	11760.000010937	Sum of GTIs [s]
			ontime7	11760.000010937	Sum of GTIs [s]
			l1events	243609	Number of level 1 events

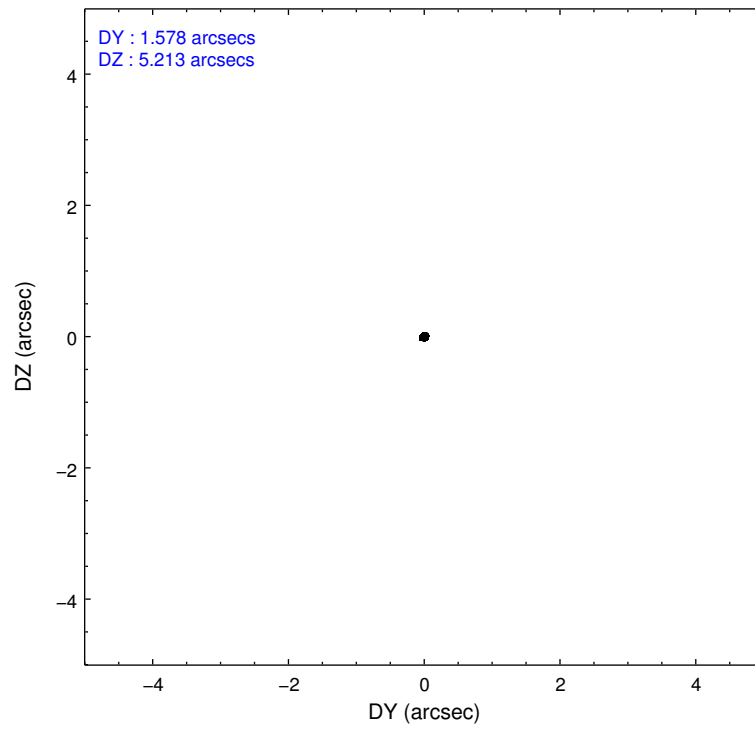
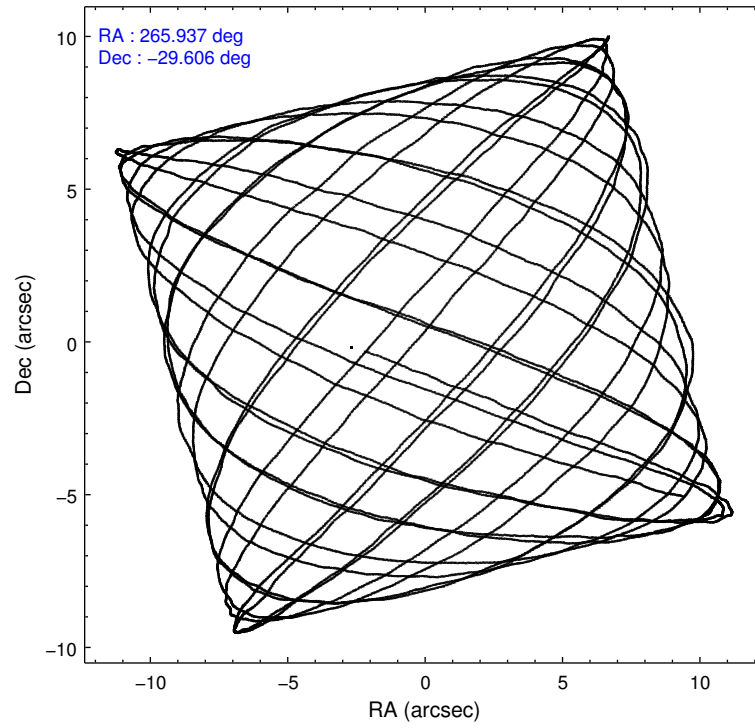
2.1.4 Events

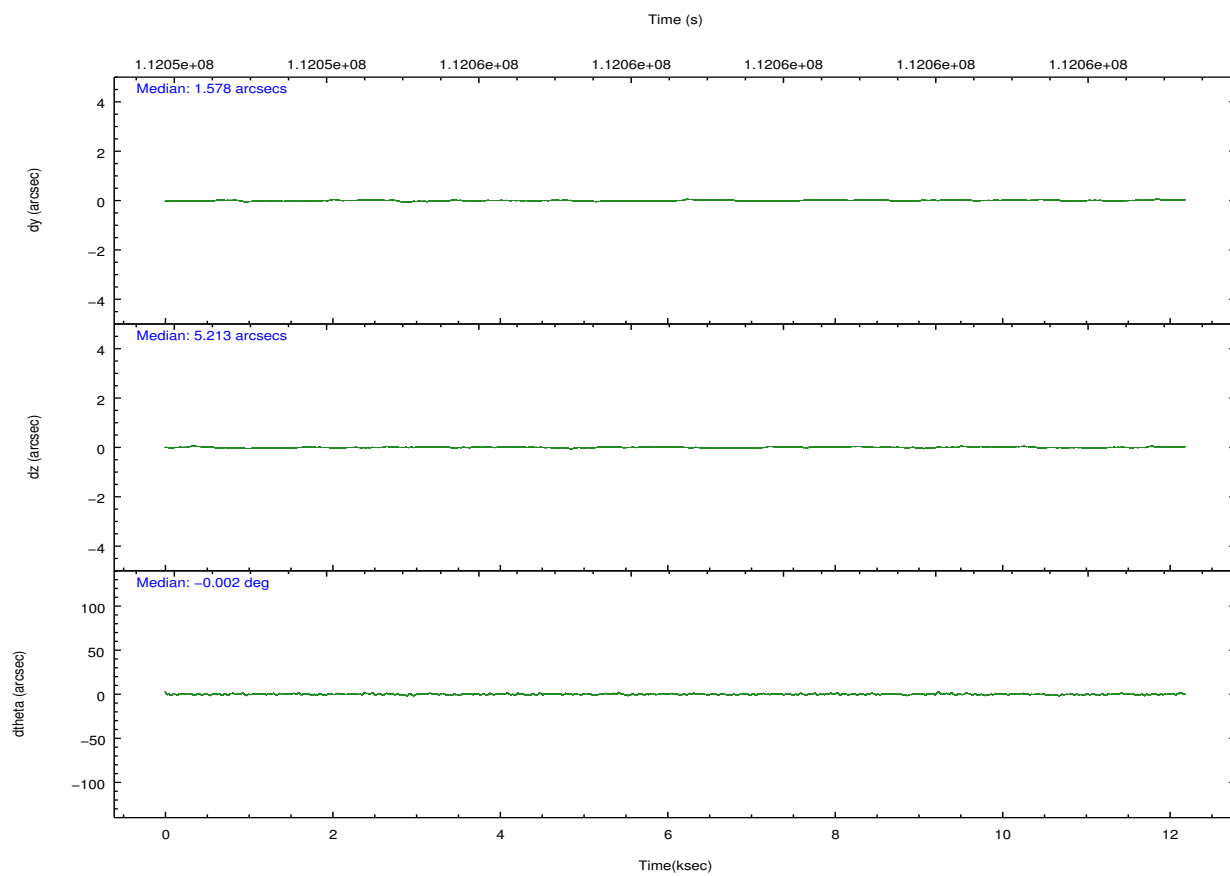
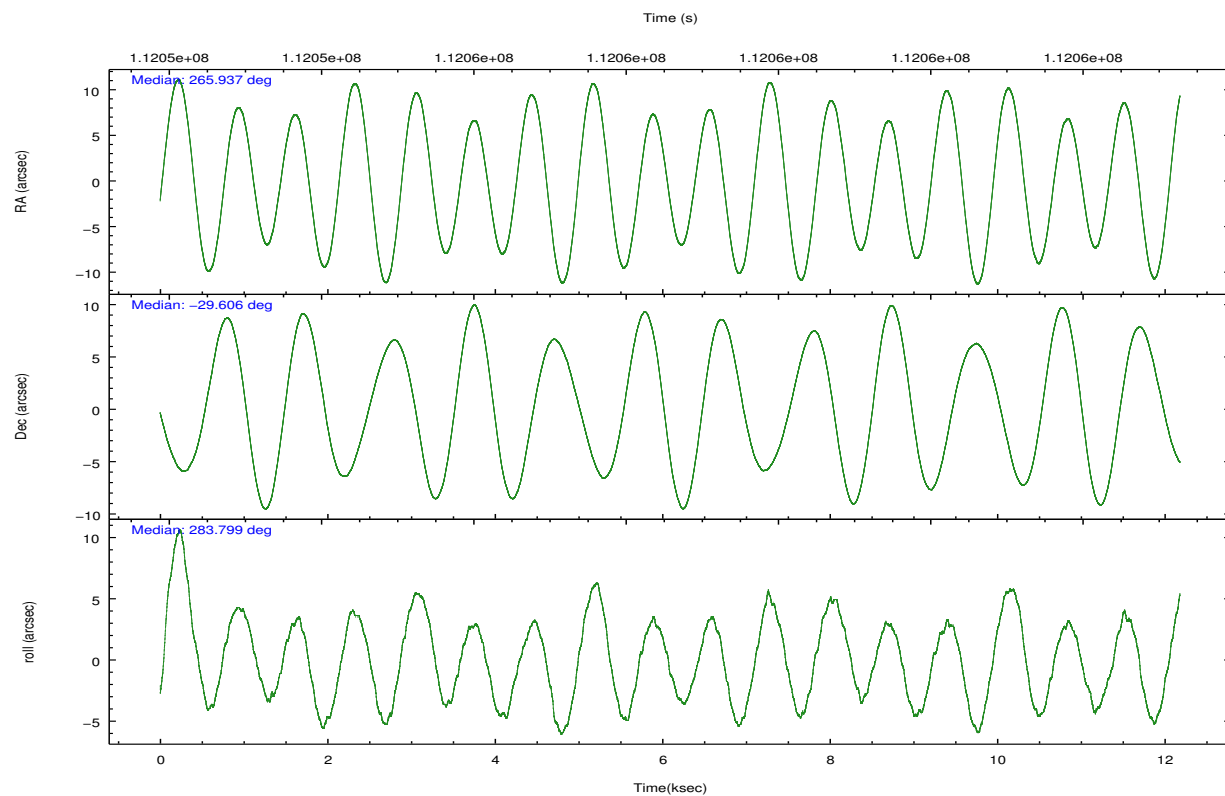
	ccd 0	ccd 1	ccd 2	ccd 3	ccd 6	ccd 7		ccd 0	ccd 1	ccd 2	ccd 3	ccd 6	ccd 7
level 1 events	33046	29249	74953	33254	32848	40259	grade 0 events	5602	3078	26292	3636	2612	2409
rejected events	23407	22841	29792	26089	27046	18106		16%	10%	35%	10%	7%	5%
rejected %	70%	78%	39%	78%	82%	44%	grade 1 events	46	34	1113	33	17	37
								0%	0%	1%	0%	0%	0%
							grade 2 events	1655	1278	7527	1330	1158	4683
								5%	4%	10%	3%	3%	11%
							grade 3 events	651	505	2818	561	498	2109
								1%	1%	3%	1%	1%	5%
							grade 4 events	601	531	2789	527	472	2073
								1%	1%	3%	1%	1%	5%
							grade 5 events	1182	1338	2018	1361	1505	4370
								3%	4%	2%	4%	4%	10%
							grade 6 events	1134	1018	5753	1115	1065	10883
								3%	3%	7%	3%	3%	27%
							grade 7 events	22175	21467	26643	24691	25521	13695
								67%	73%	35%	74%	77%	34%

2.2 Compared Parameters

Parameter	Planned	Actual	Parameter	Planned	Actual
Instrument	ACIS	ACIS	Obspar format version number	7	7
Detector	ACIS-012367	ACIS-012367	Obspar file type	PREDICTED	ACTUAL
Grating	NONE	NONE	Obspar update status	NONE	UPDATED
Data mode	FAINT	FAINT	Number of optional ACIS chips dropped	0	0
Observation mode	POINTING	POINTING	On-chip summing requested	N	N
[deg] Pointing RA	265.914855	265.9367542358866	Subarray requested	NONE	NONE
[deg] Pointing Dec	-29.585990	-29.60578525880324	Alternating exposures requested	N	N
[deg] Pointing Roll	283.587766	283.807274671195	[s] Primary exposure time	0.000000	3.2
[deg] Roll angle	283.600000	283.600000			
[deg] Roll tolerance	2.000000	2.000000			
Roll constraint allows 180D rotation	N	N			
[mm] SIM focus pos	-0.782348	-0.7809083437167272			
[mm] SIM defocus	0	0.001439871863259334			
[mm] SIM translation stage pos	-233.592463	-233.5874344608287			
[mm] SIM translation stage offset	0	-0.005018542100998502			
[s] Observation start time (MET)	112052666.184000	112052290.03641			
Observation start date	2001-07-20T21:43:22	2001-07-20T21:38:10			
[s] Observation end time (MET)	112064666.184000	112064799.6494			
Observation end date	2001-07-21T01:03:22	2001-07-21T01:06:39			
Read mode	TIMED	TIMED			

2.3 Aspect



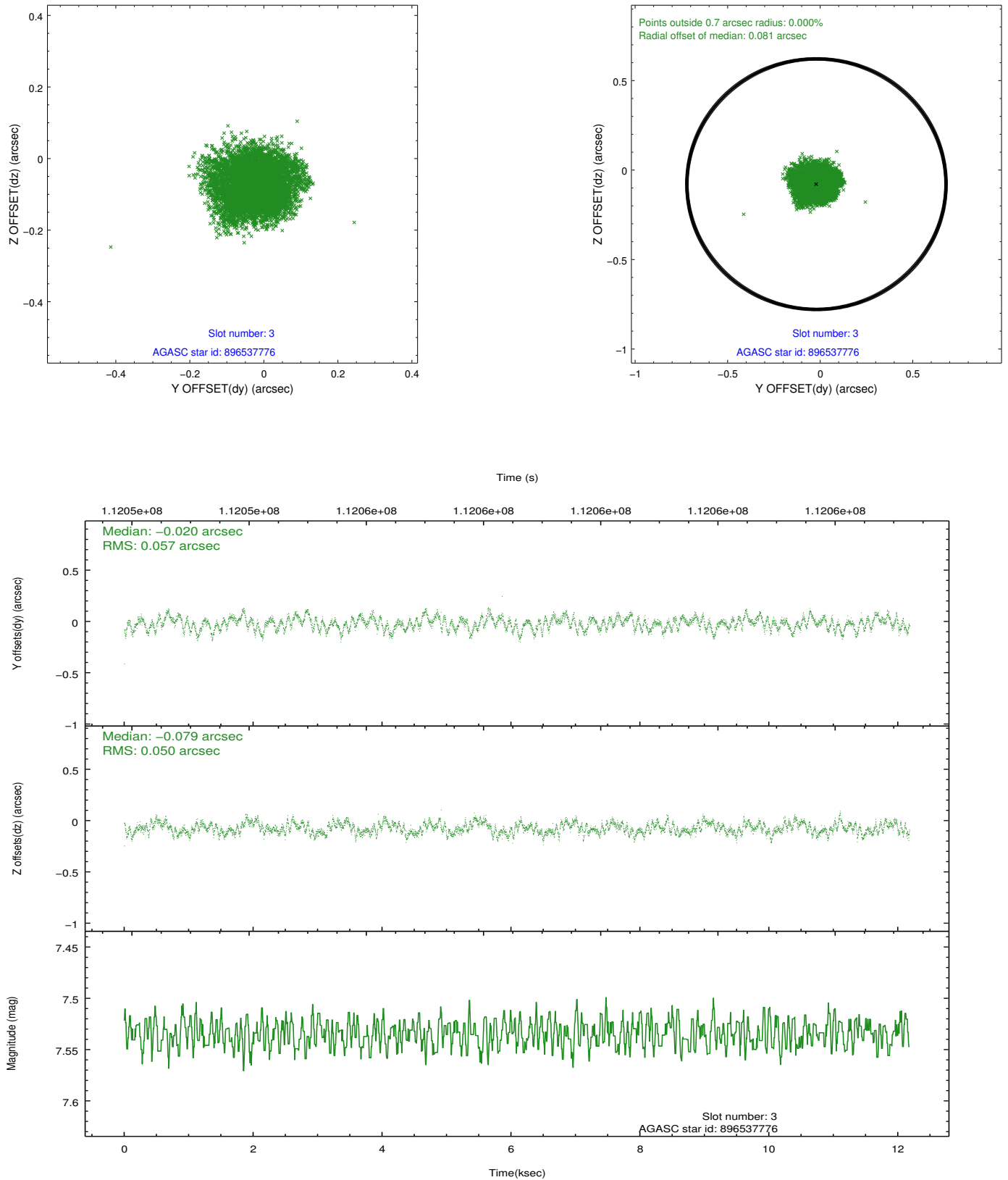


Slot Statistics

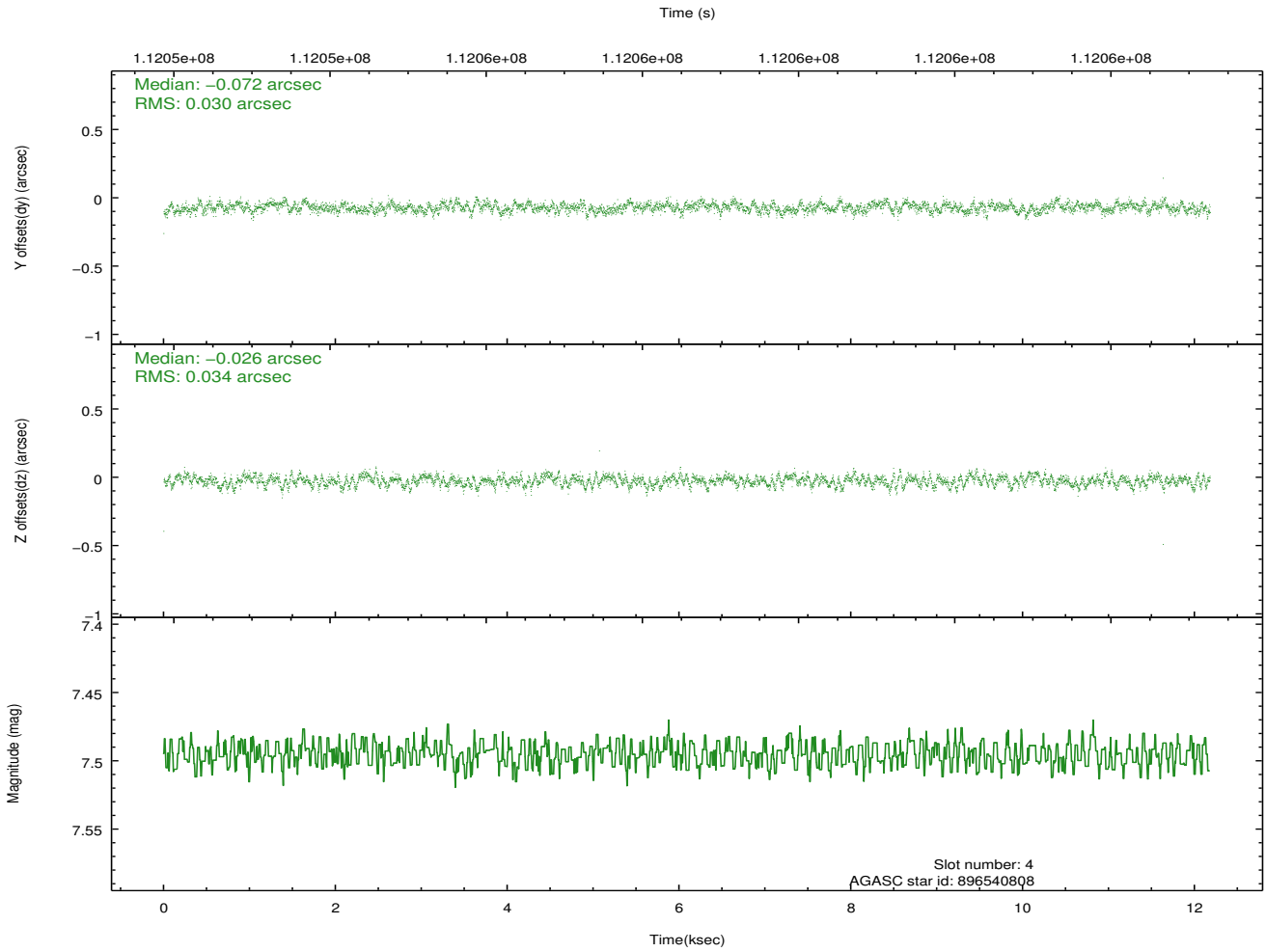
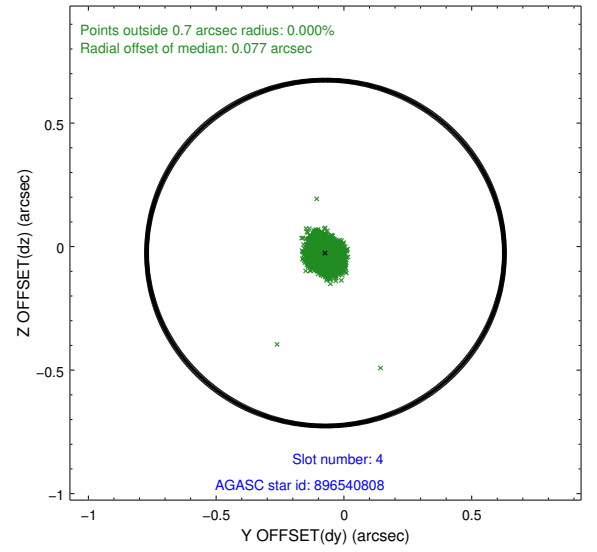
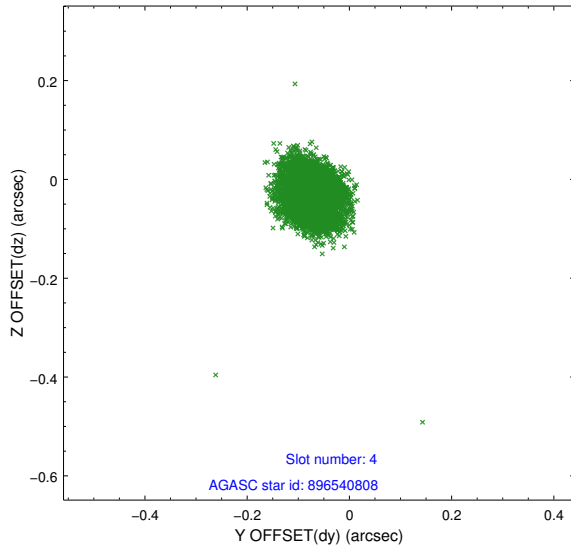
slot	status	id	mag	n_pts	med_dy	med_dz	dr1	dr2	ra	dec	mean_y	mean_z
0	FID	ACIS-I-3	7.45	2969	-0.014	0.184	0.009	0.014	0.000000	0.000000	55.66	-961.61
1	FID	ACIS-I-4	7.18	2968	-0.032	-0.063	0.007	0.012	0.000000	0.000000	2158.20	1070.94
2	FID	ACIS-I-5	7.23	2969	-0.052	-0.052	0.008	0.013	0.000000	0.000000	-1809.27	1069.31
3	GUIDE	896537776	7.53	5941	-0.020	-0.079	0.083	0.129	266.655684	-29.665673	830.31	2183.95
4	GUIDE	896540808	7.50	5940	-0.072	-0.026	0.048	0.076	265.985401	-29.308604	-918.41	450.55
5	GUIDE	896536320	8.97	5938	0.033	0.031	0.070	0.113	266.369048	-29.307026	-638.70	1621.71
6	GUIDE	966924920	8.10	5940	0.156	0.070	0.059	0.093	265.875401	-30.176961	2039.40	-618.09
7	GUIDE	896405480	8.25	5940	-0.097	0.005	0.065	0.103	265.220460	-29.599691	-455.72	-2125.53

2.4 Star Slots

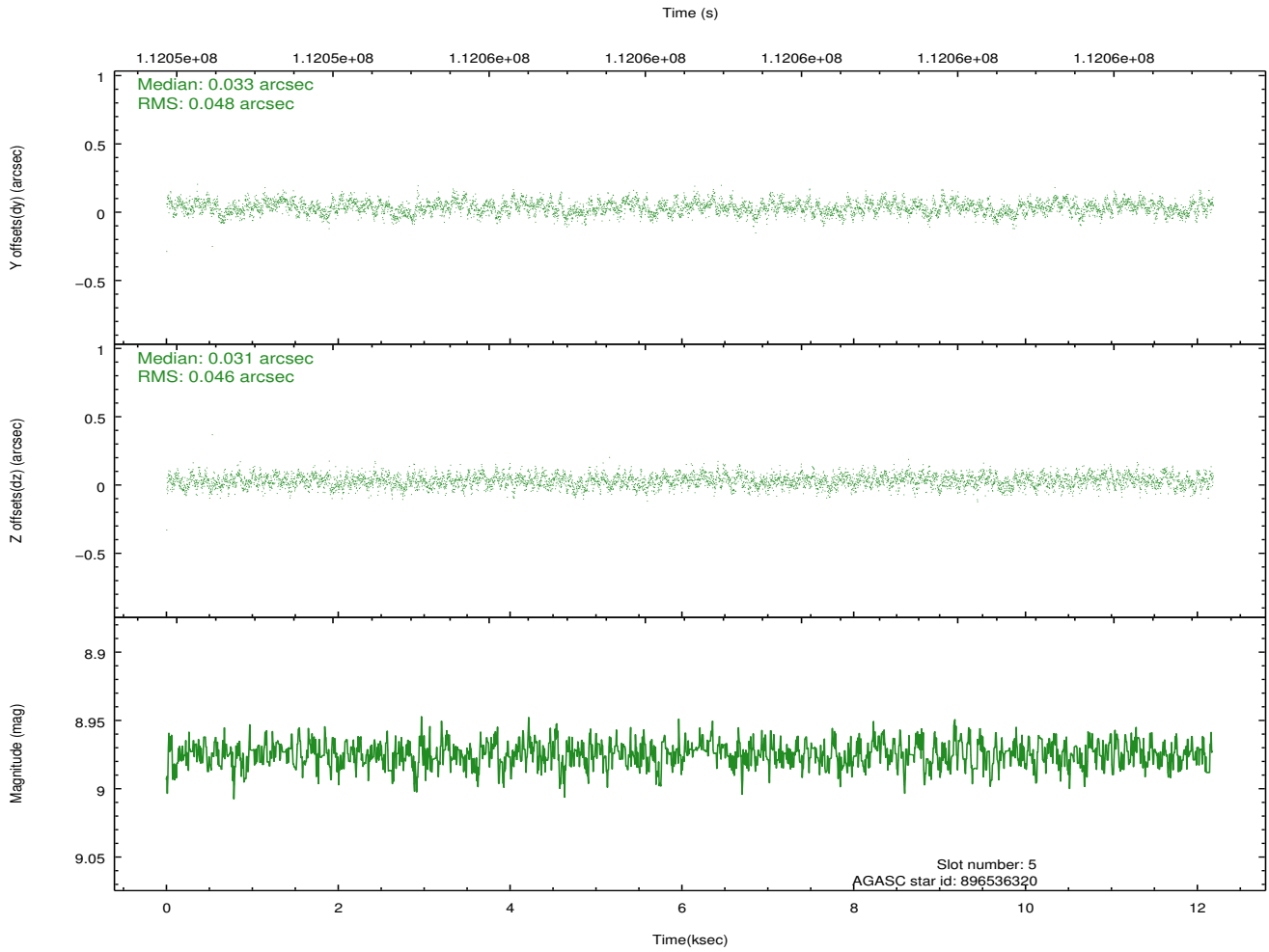
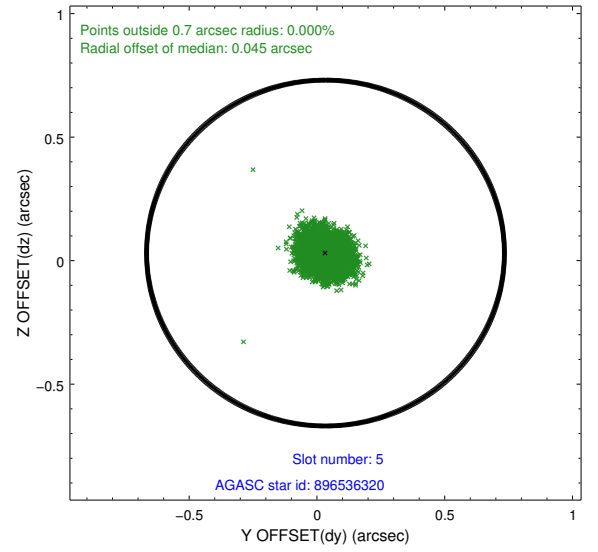
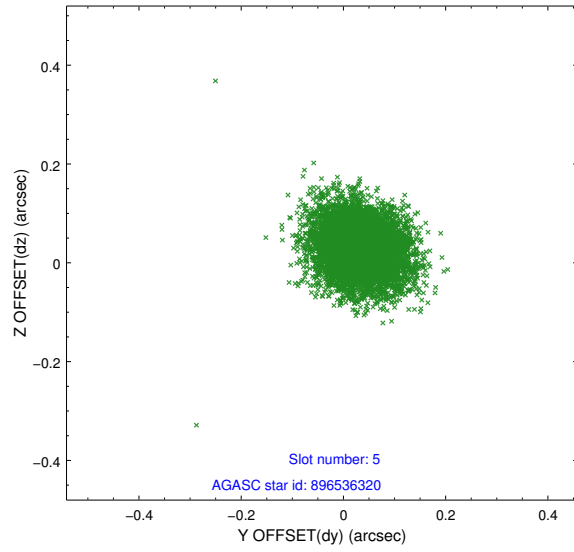
2.4.1 Slot 3



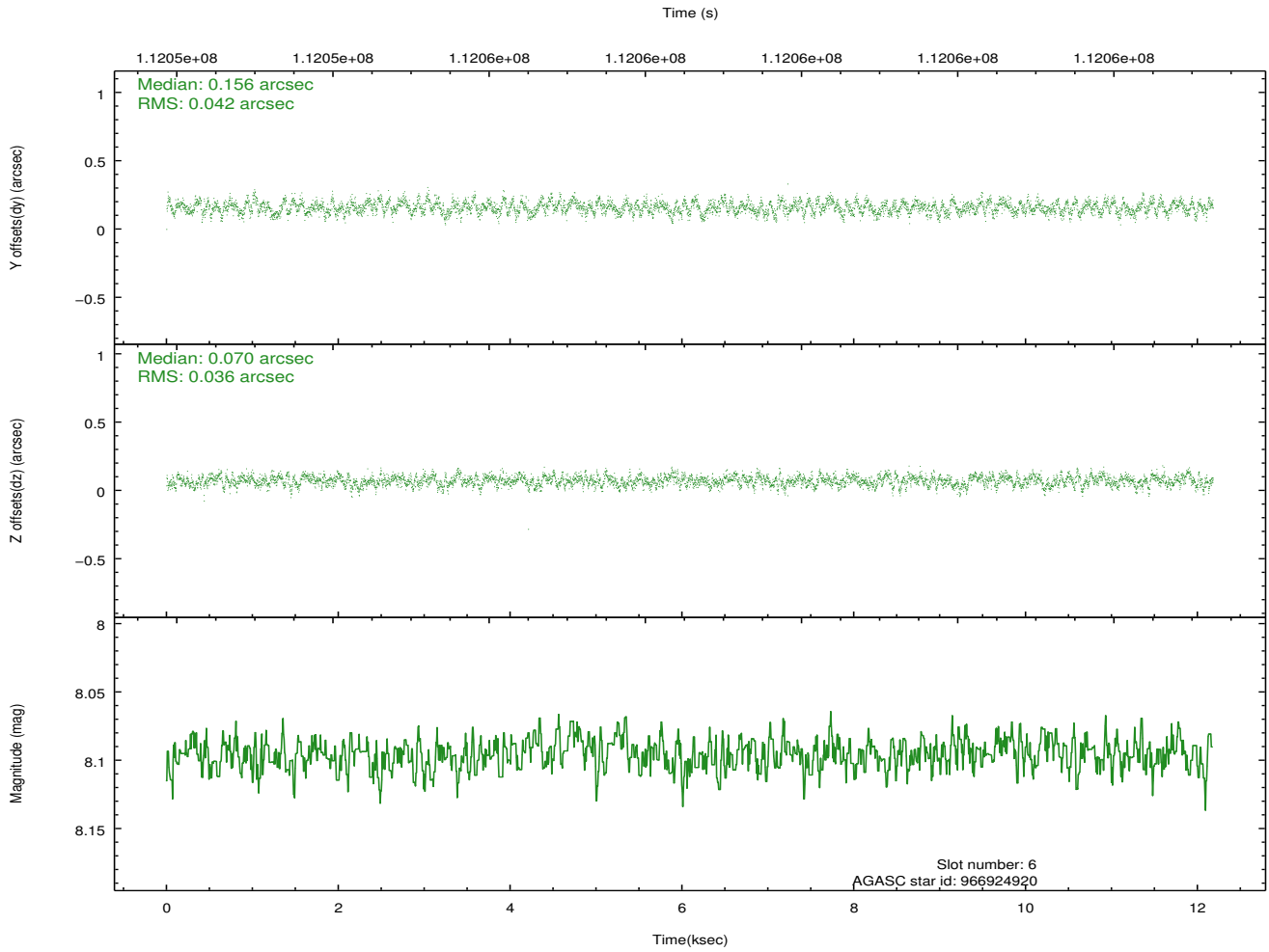
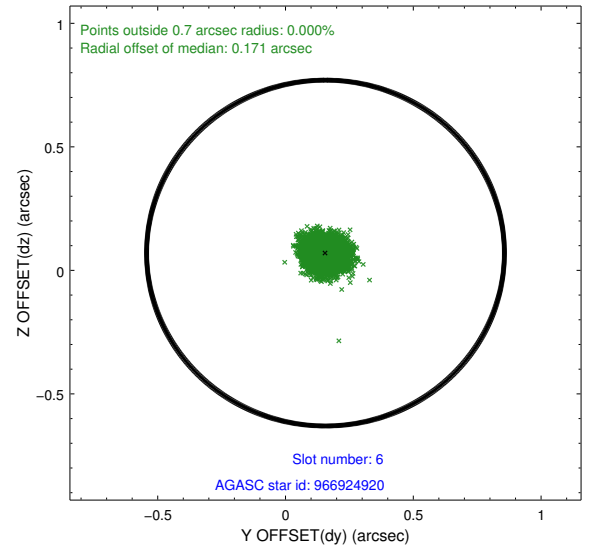
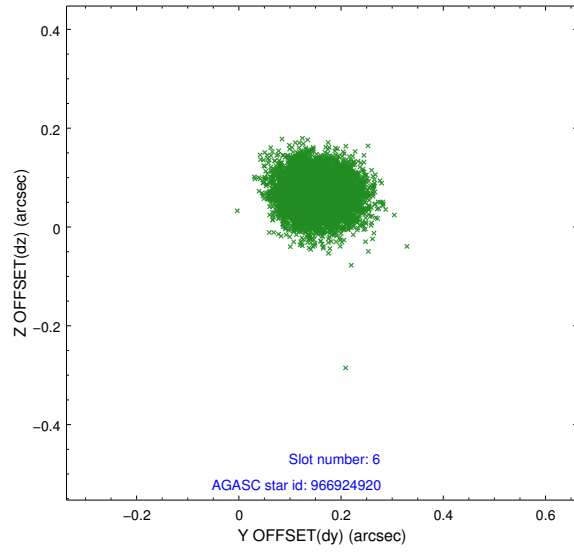
2.4.2 Slot 4



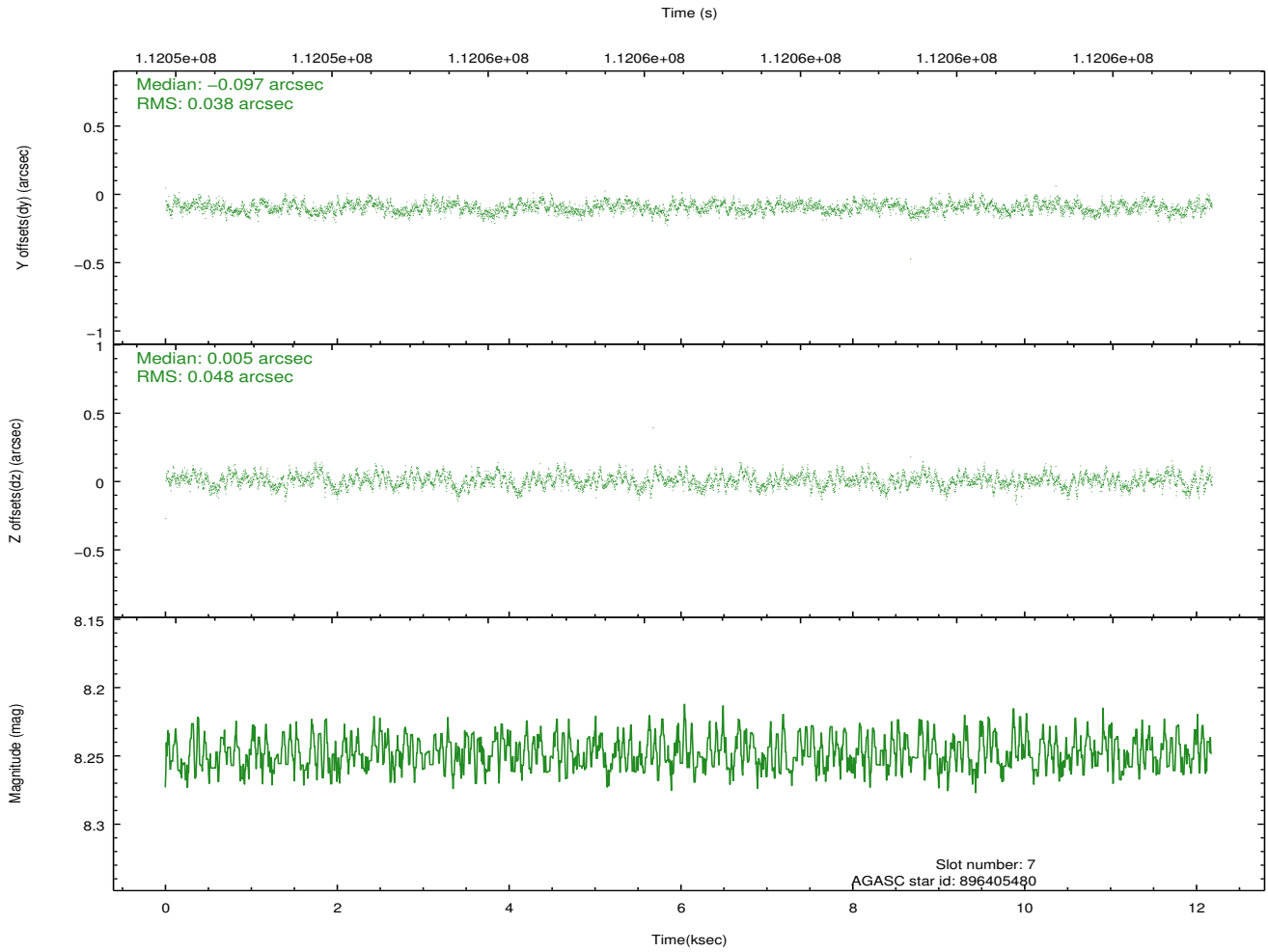
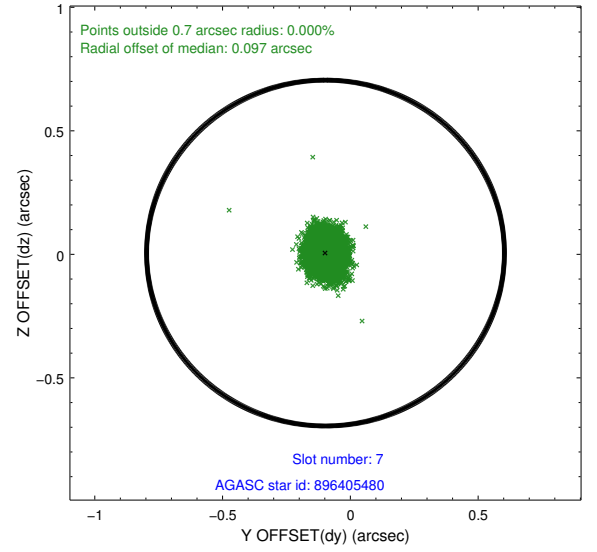
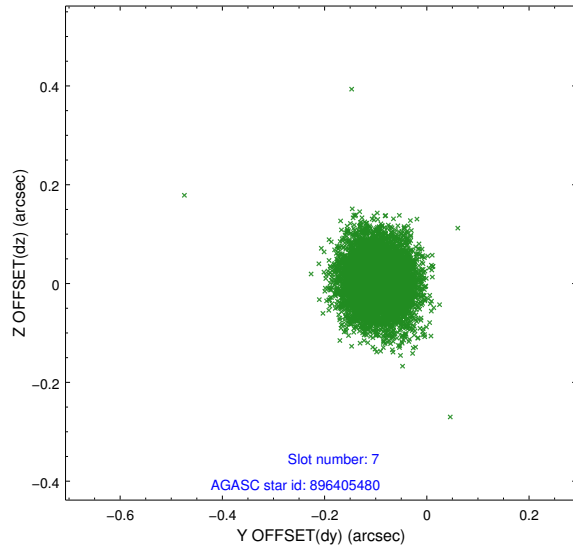
2.4.3 Slot 5



2.4.4 Slot 6

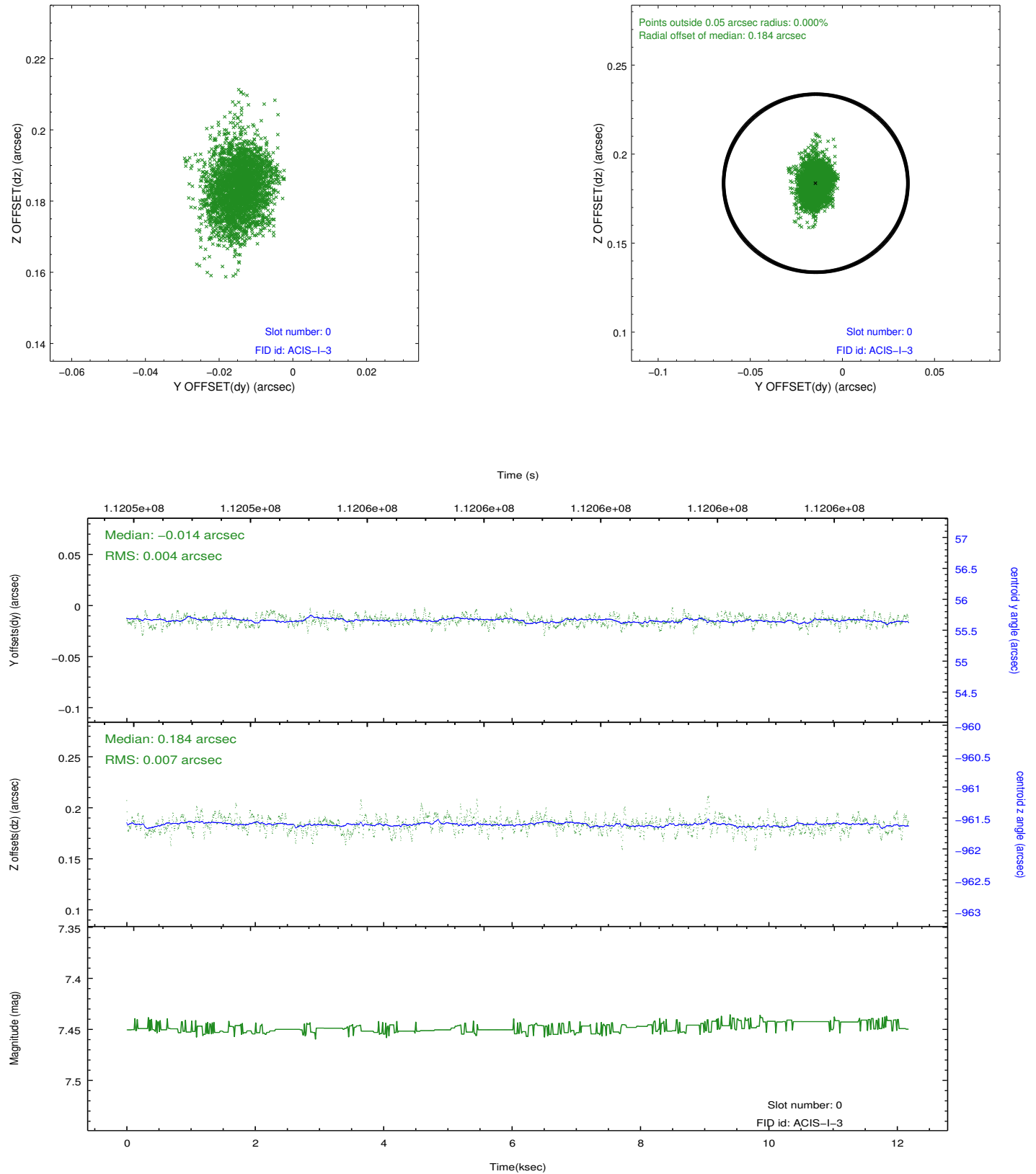


2.4.5 Slot 7

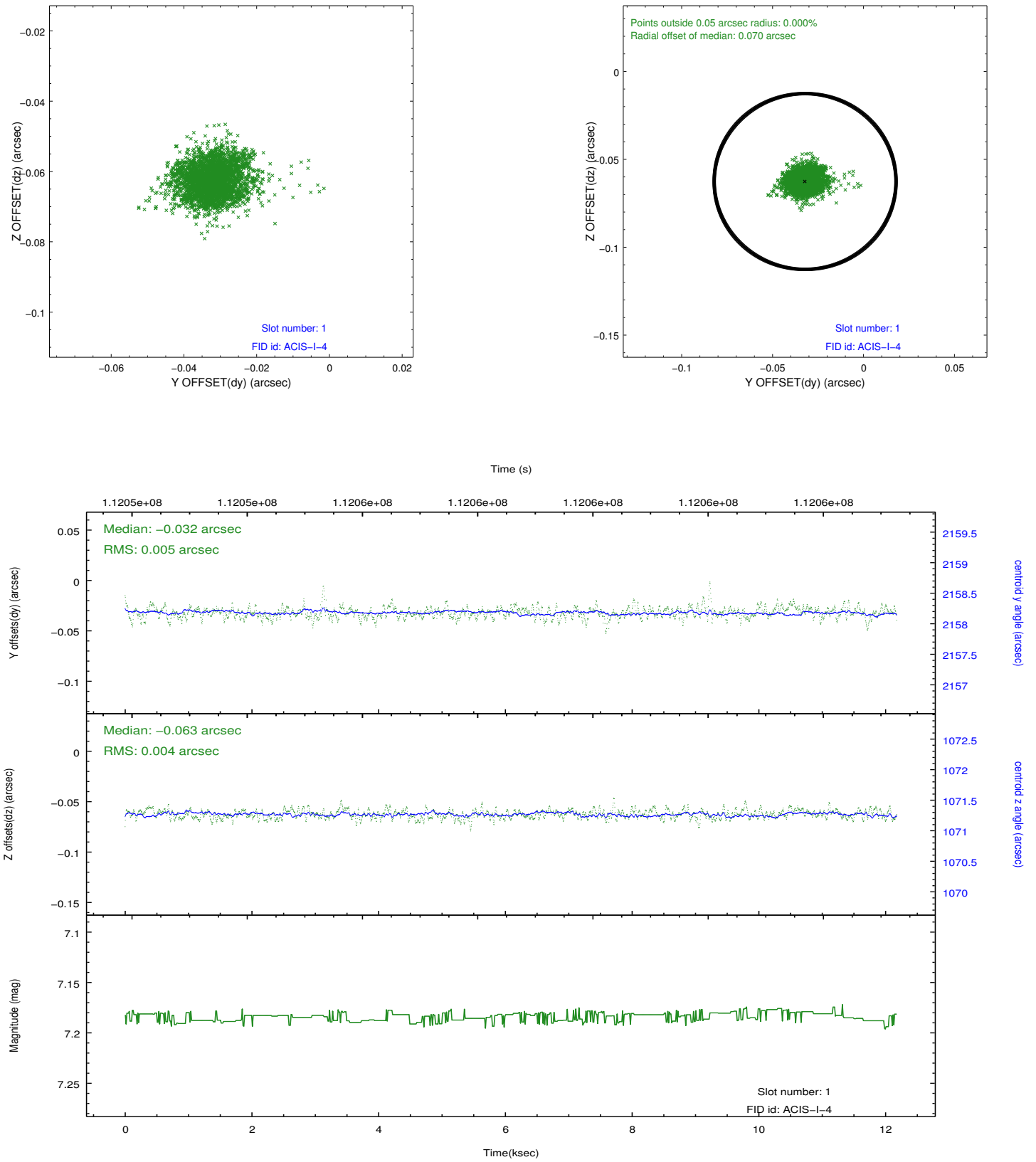


2.5 FID Slots

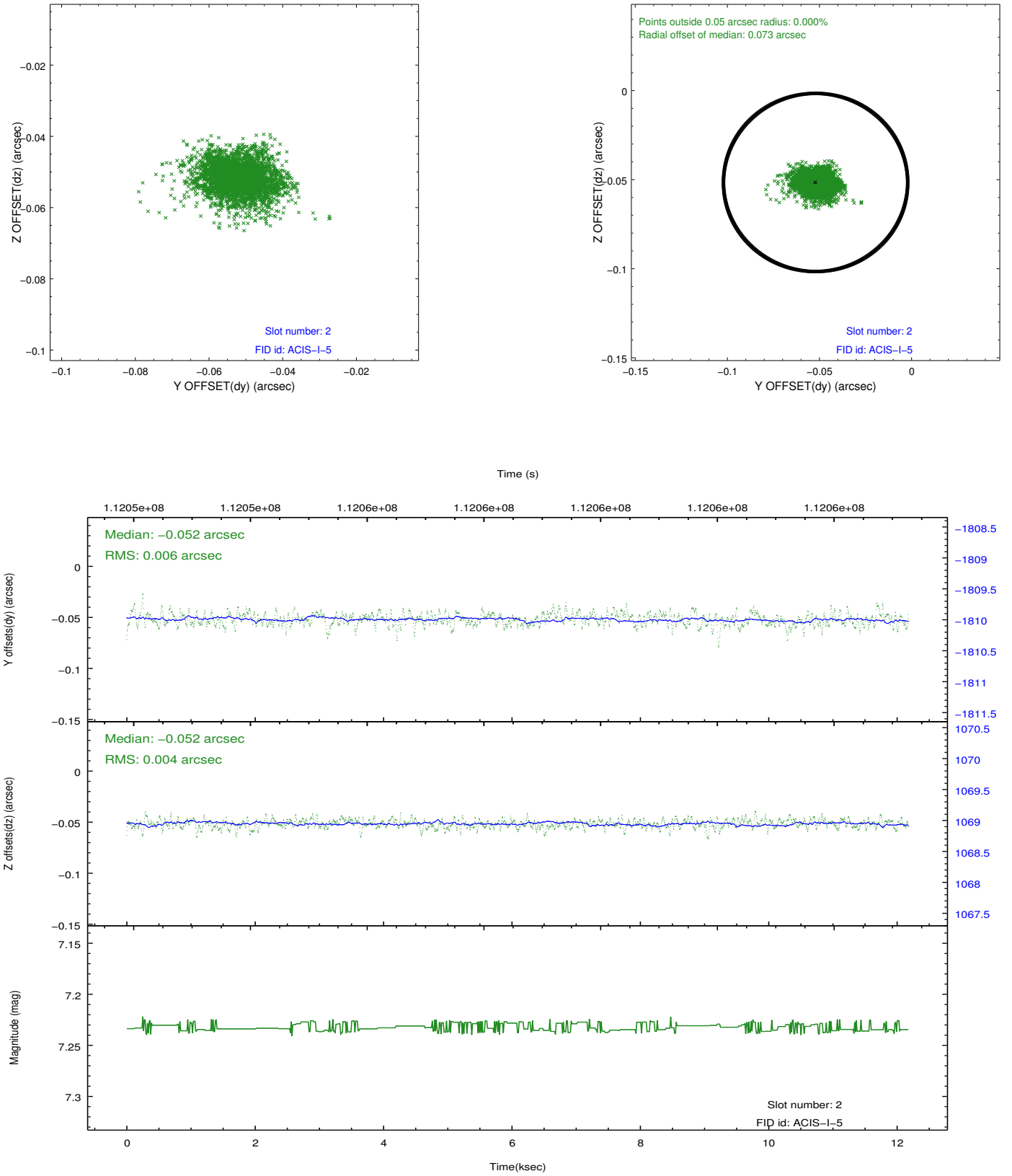
2.5.1 Slot 0



2.5.2 Slot 1



2.5.3 Slot 2



A Summary

A.1 Status

V&V Scientist	Beth Sundheim
V&V Date (YYYY-MM-DD)	2012.09.24
V&V Edition	1
V&V Disposition and Status	OK
V&V Charge Time	11.763

A.2 Comments

Roll preference met.