

# V&V Reference Report

## L2 ASCDS Version : 7.6.10

Observation 2263 - L2 Version 001  
Chandra X-Ray Center

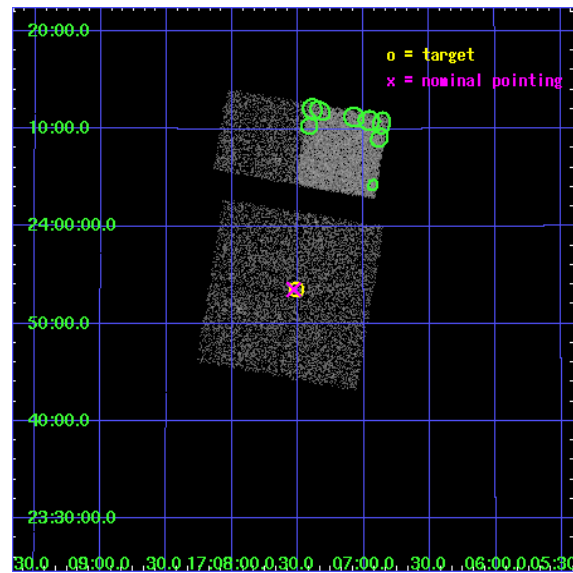
L2 Processing Date : Jan 18 2007

## Contents

<b>1</b>	<b>Front</b>	<b>2</b>
<b>2</b>	<b>OBI</b>	<b>3</b>
2.1	OBI . . . . .	3
2.1.1	Images . . . . .	3
2.1.2	Bias . . . . .	3
2.1.3	Parameters . . . . .	4
2.1.4	Events . . . . .	4
2.2	Compared Parameters . . . . .	5
2.3	Aspect . . . . .	6
2.4	Star Slots . . . . .	9
2.4.1	Slot 3 . . . . .	9
2.4.2	Slot 4 . . . . .	10
2.4.3	Slot 5 . . . . .	11
2.4.4	Slot 6 . . . . .	12
2.4.5	Slot 7 . . . . .	13
2.5	FID Slots . . . . .	14
2.5.1	Slot 0 . . . . .	14
2.5.2	Slot 1 . . . . .	15
2.5.3	Slot 2 . . . . .	16
<b>3</b>	<b>Point Sources</b>	<b>17</b>
<b>A</b>	<b>Summary</b>	<b>18</b>
A.1	Status . . . . .	18
A.2	Comments . . . . .	18

# 1 Front

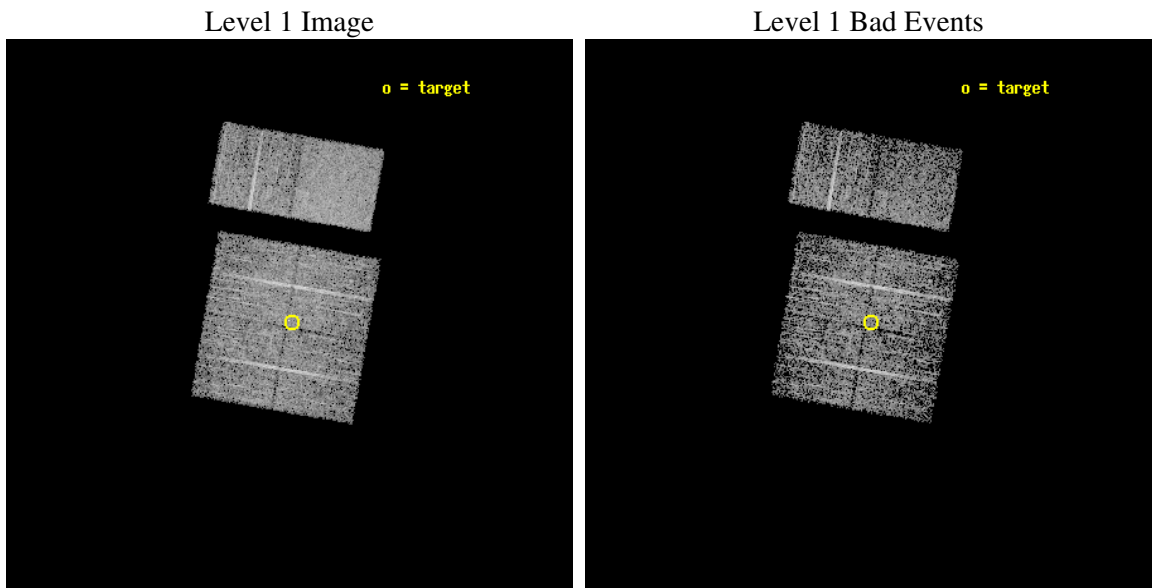
seq_num	900090
obs_id	2263
title	CHANDRA OBSERVATION OF HARD X-RAY SOURCES DISCOVERED WITH ASCA
observer	Dr Yoshihiro Ueda
object	AGX~J170730+2353
dtcycle	0
cycle	P
ra_targ	256.877917
dec_targ	23.8935
ra_nom	256.88282388342
dec_nom	23.892334868584
roll_nom	9.8730808565127
revision	2
ontime	3462.4000032246
livetime	3418.5570095768
ontime0	3462.4000032246
ontime1	3462.4000032246
ontime2	3462.4000032246
ontime3	3462.4000032246
ontime6	3462.4000032246
ontime7	3462.4000032246
l2events	24888



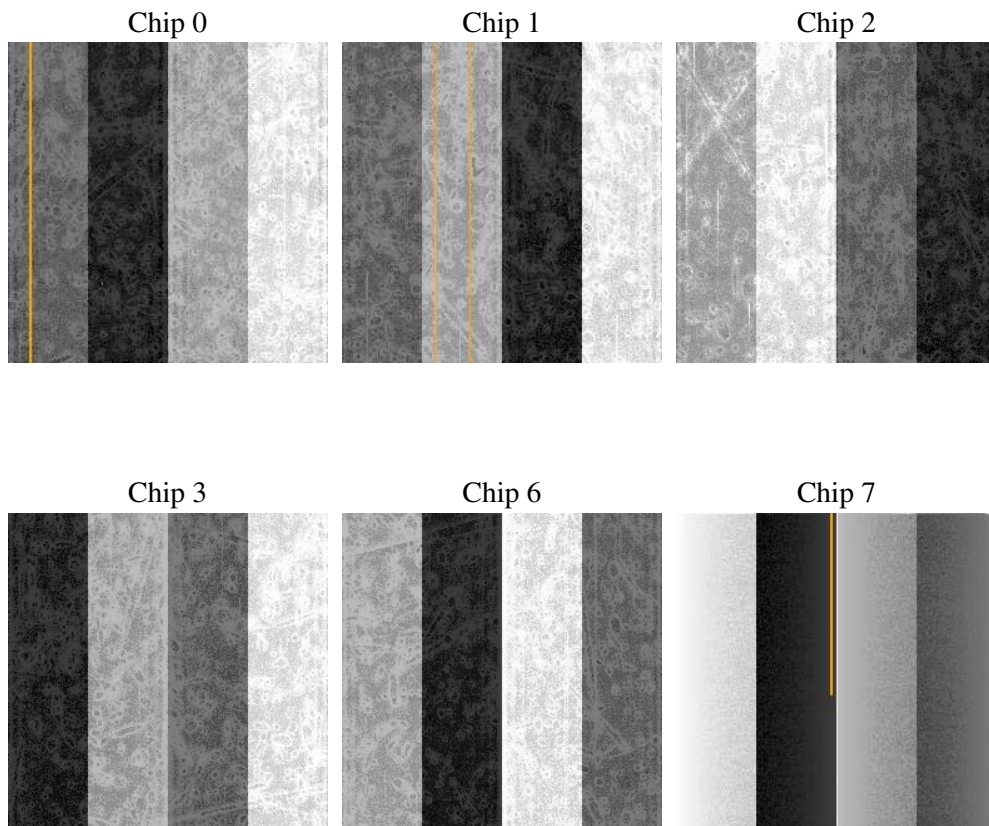
## 2 OBI

### 2.1 OBI

#### 2.1.1 Images



#### 2.1.2 Bias



### 2.1.3 Parameters

obi_num	1
ascdsver	7.6.10
caldsver	3.3.0
date	2007-01-18T04:58:32
revision	2

sched_exp_time	3500.000000
ontime	3462.4000032246
ontime0	3462.4000032246
ontime1	3462.4000032246
ontime2	3462.4000032246
ontime3	3462.4000032246
ontime6	3462.4000032246
ontime7	3462.4000032246
l1events	139414

### 2.1.4 Events

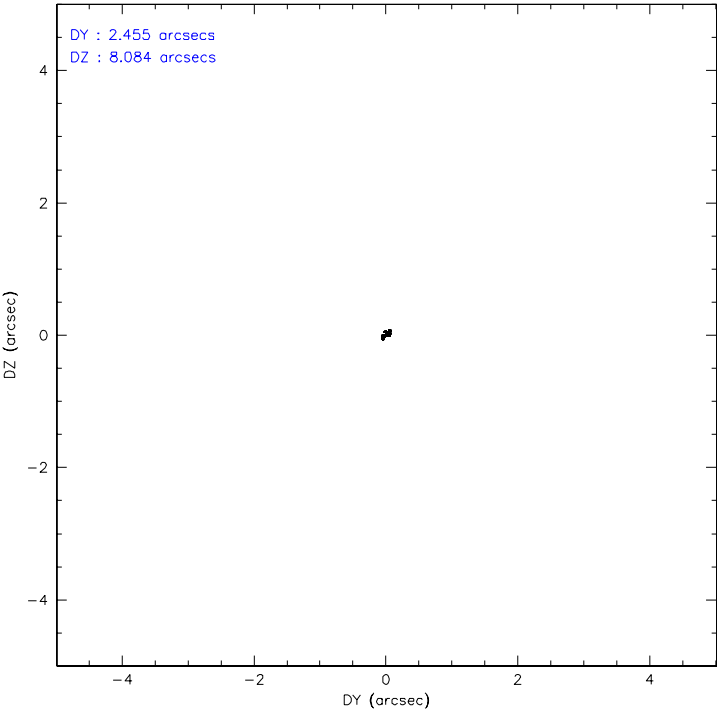
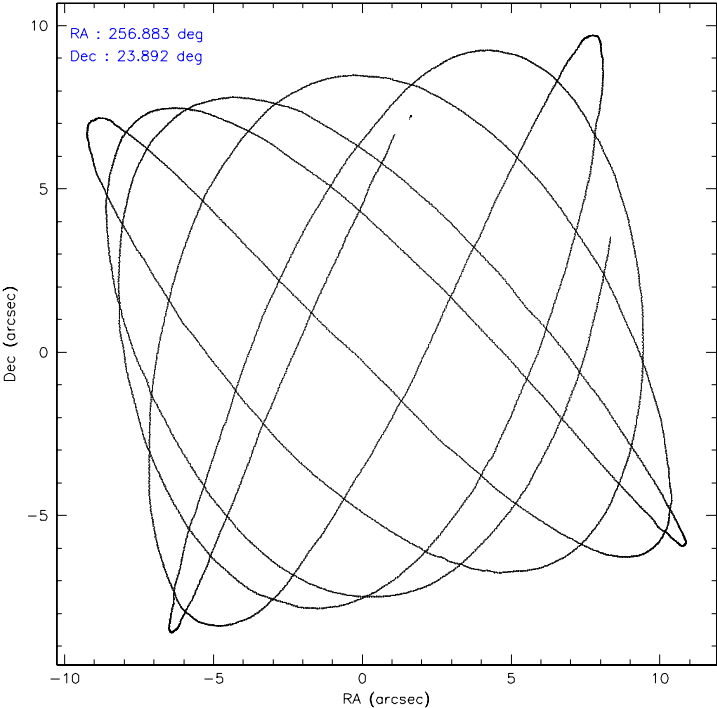
	ccd 0	ccd 1	ccd 2	ccd 3	ccd 6	ccd 7
level 1 events	21444	20199	23103	23005	22783	28880
rejected events	18377	17092	20099	19970	19748	16764
rejected %	85%	84%	86%	86%	86%	58%

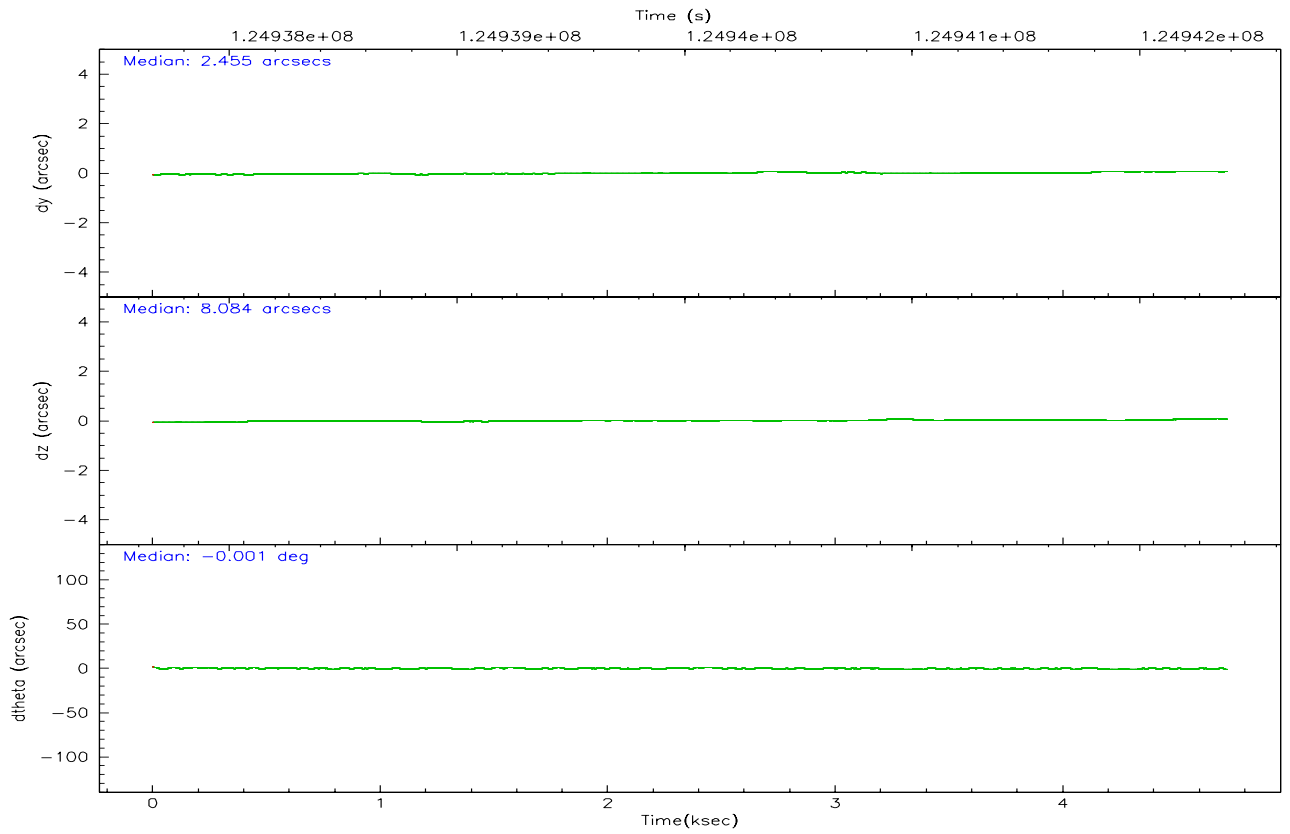
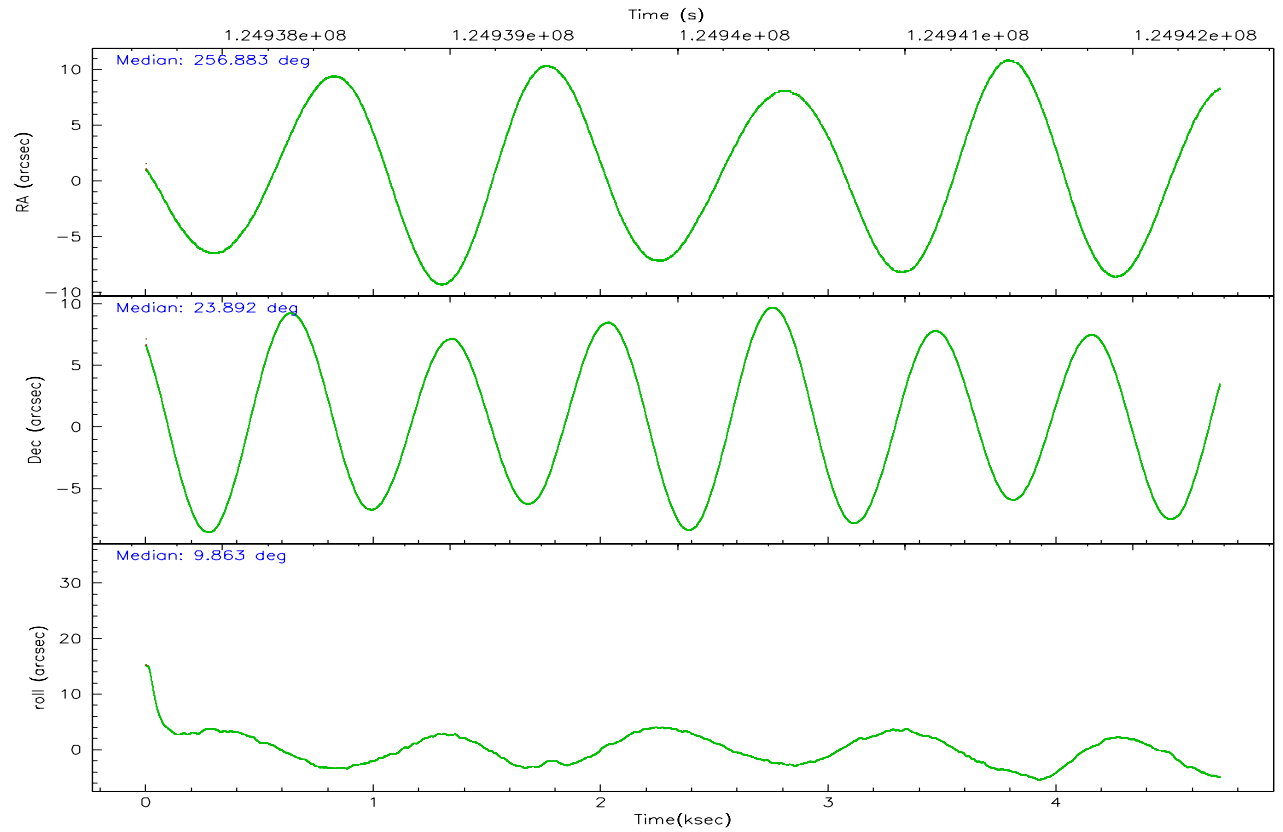
	ccd 0	ccd 1	ccd 2	ccd 3	ccd 6	ccd 7
grade 0 events	1322	1288	1344	1322	1290	1184
	6%	6%	5%	5%	5%	4%
grade 1 events	12	12	10	17	13	35
	0%	0%	0%	0%	0%	0%
grade 2 events	702	651	660	634	631	2387
	3%	3%	2%	2%	2%	8%
grade 3 events	234	283	230	248	255	1128
	1%	1%	0%	1%	1%	3%
grade 4 events	285	308	244	261	283	1064
	1%	1%	1%	1%	1%	3%
grade 5 events	850	822	768	867	890	2770
	3%	4%	3%	3%	3%	9%
grade 6 events	528	581	535	572	578	6366
	2%	2%	2%	2%	2%	22%
grade 7 events	17511	16254	19312	19084	18843	13946
	81%	80%	83%	82%	82%	48%

## 2.2 Compared Parameters

Parameter	Planned	Actual	Parameter	Planned	Actual
Instrument	ACIS	ACIS	Obspar format version number	6	6
Detector	ACIS-012367	ACIS-012367	Obspar file type	PREDICTED	ACTUAL
Grating	NONE	NONE	Obspar update status	NONE	UPDATED
Data mode	FAINT	FAINT	Number of optional ACIS chips dropped	0	0
Observation mode	POINTING	POINTING	On-chip summing requested	N	N
Pointing RA	256.859953	256.8828238834153	Subarray requested	NONE	NONE
Pointing Dec	23.874808	23.8923348685838	Alternating exposures requested	N	N
Pointing Roll	9.673646	9.873080856512733	Primary exposure time	0.000000	3.2
SIM focus pos (mm)	-0.782348	-0.7809083437167272			
SIM defocus (mm)	0	0.001439871863259334			
SIM translation stage pos (mm)	-233.592463	-233.5874344608287			
SIM translation stage offset (mm)	0	-0.005018542100998502			
Observation start time	124938886.184000	124937413.84749			
Observation start date	2001-12-17T01:13:42	2001-12-17T00:50:13			
Observation end time	124942386.184000	124943085.68521			
Observation end date	2001-12-17T02:12:02	2001-12-17T02:24:45			
Read mode	TIMED	TIMED			

## 2.3 Aspect





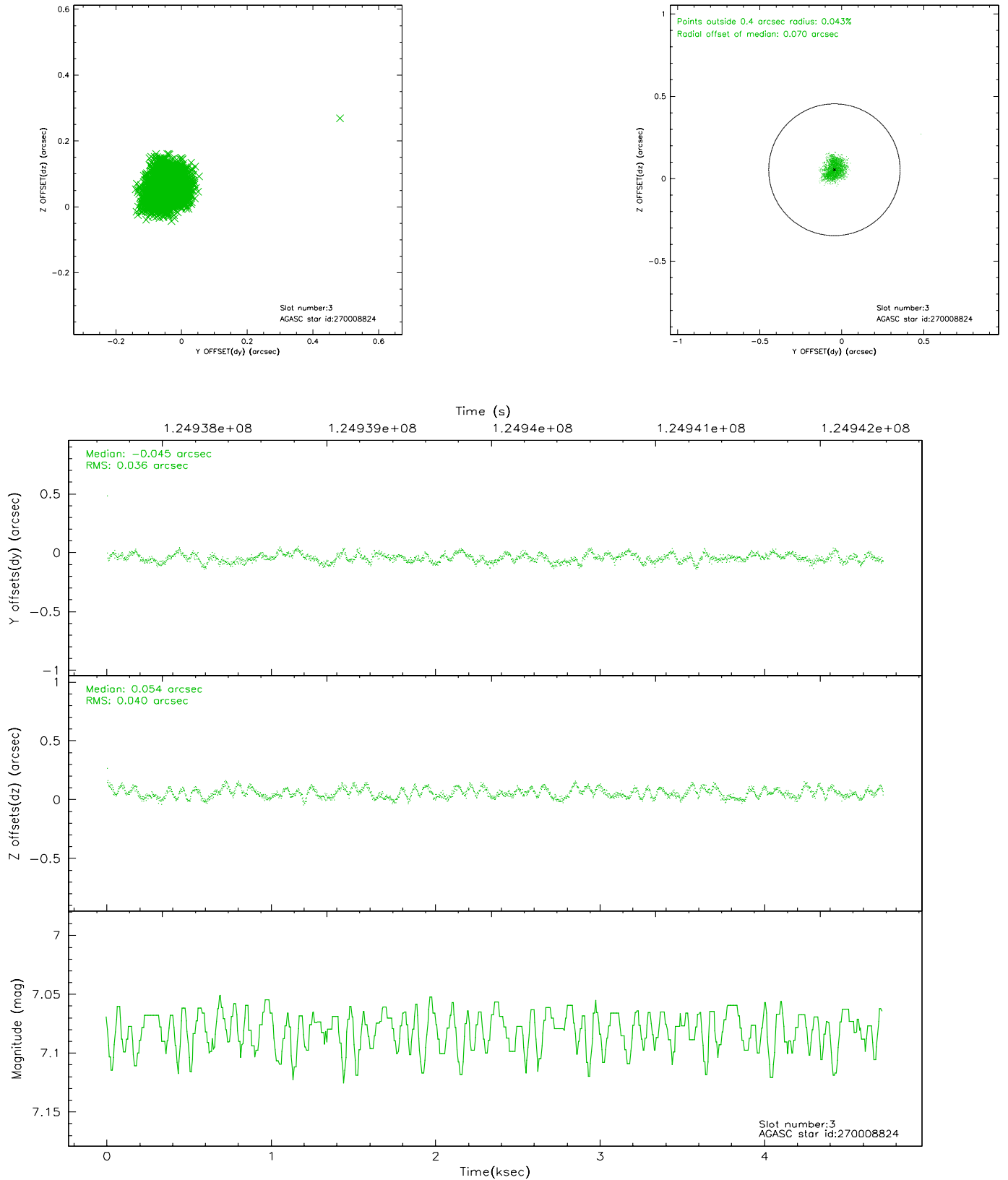
### Slot Statistics

slot	status	id	mag	n_pts	med_dy	med_dz	dr1	dr2	ra	dec	mean_y	mean_z
0	FID	ACIS-I-1	7.24	1152	-0.057	0.101	0.006	0.010	0.000000	0.000000	937.28	-831.42
1	FID	ACIS-I-5	7.23	1152	0.015	0.025	0.006	0.010	0.000000	0.000000	-1810.00	1065.38
2	FID	ACIS-I-6	7.26	1151	-0.049	-0.055	0.006	0.011	0.000000	0.000000	401.46	1711.25
3	GUIDE	270008824	7.08	2304	-0.045	0.054	0.058	0.085	256.514301	23.322063	-1459.68	-1768.60
4	GUIDE	270537568	7.23	2304	-0.048	-0.070	0.061	0.097	257.139787	24.486485	1273.66	2016.71
5	GUIDE	270017888	8.10	2303	0.059	0.159	0.053	0.087	257.407344	23.577924	1602.95	-1352.47
6	GUIDE	270142760	8.29	2304	-0.106	-0.052	0.046	0.075	257.544563	24.037060	2319.17	202.55
7	GUIDE	270011000	9.35	2299	0.141	-0.093	0.086	0.136	256.249177	24.250349	-1746.84	1673.44

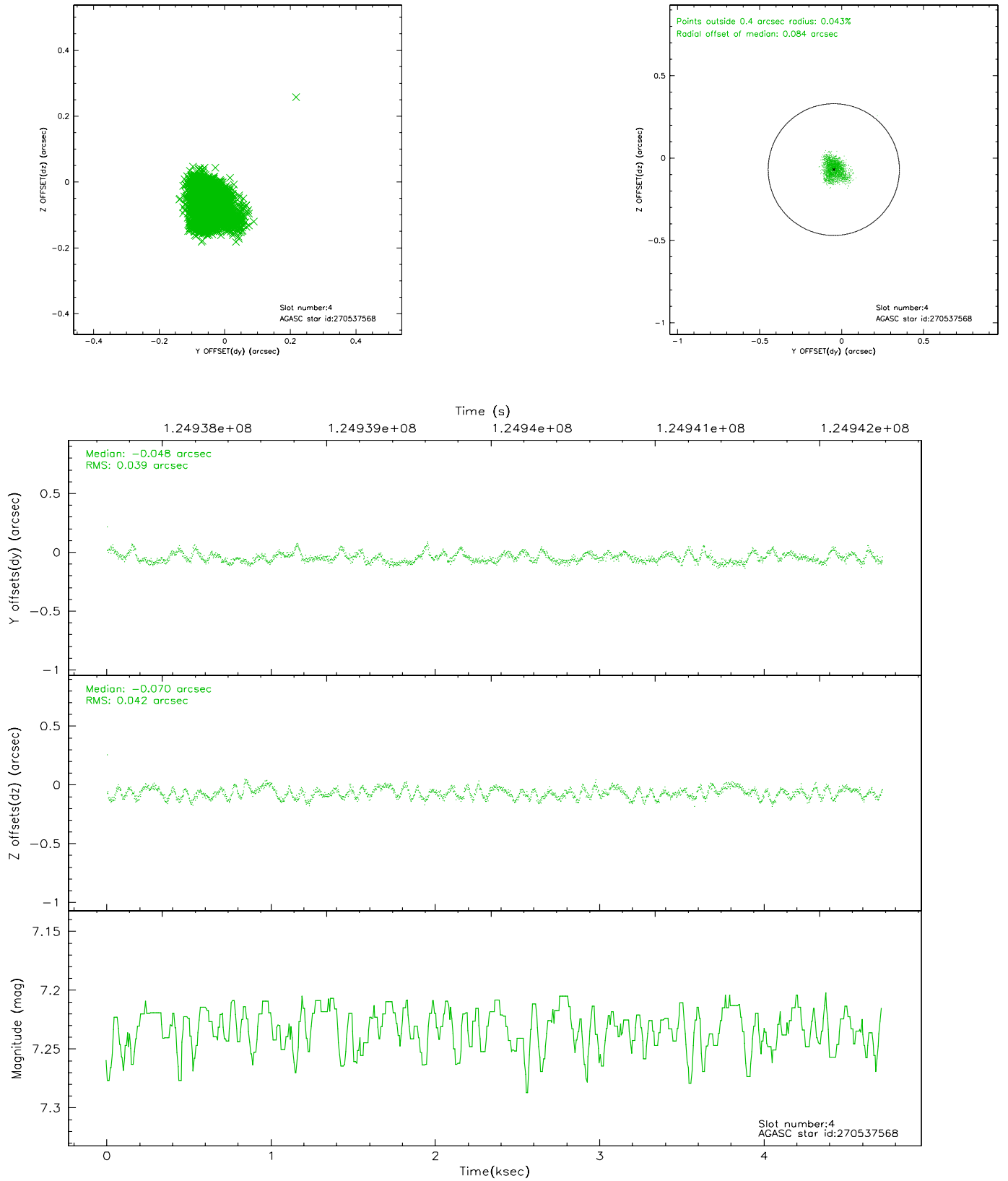


## 2.4 Star Slots

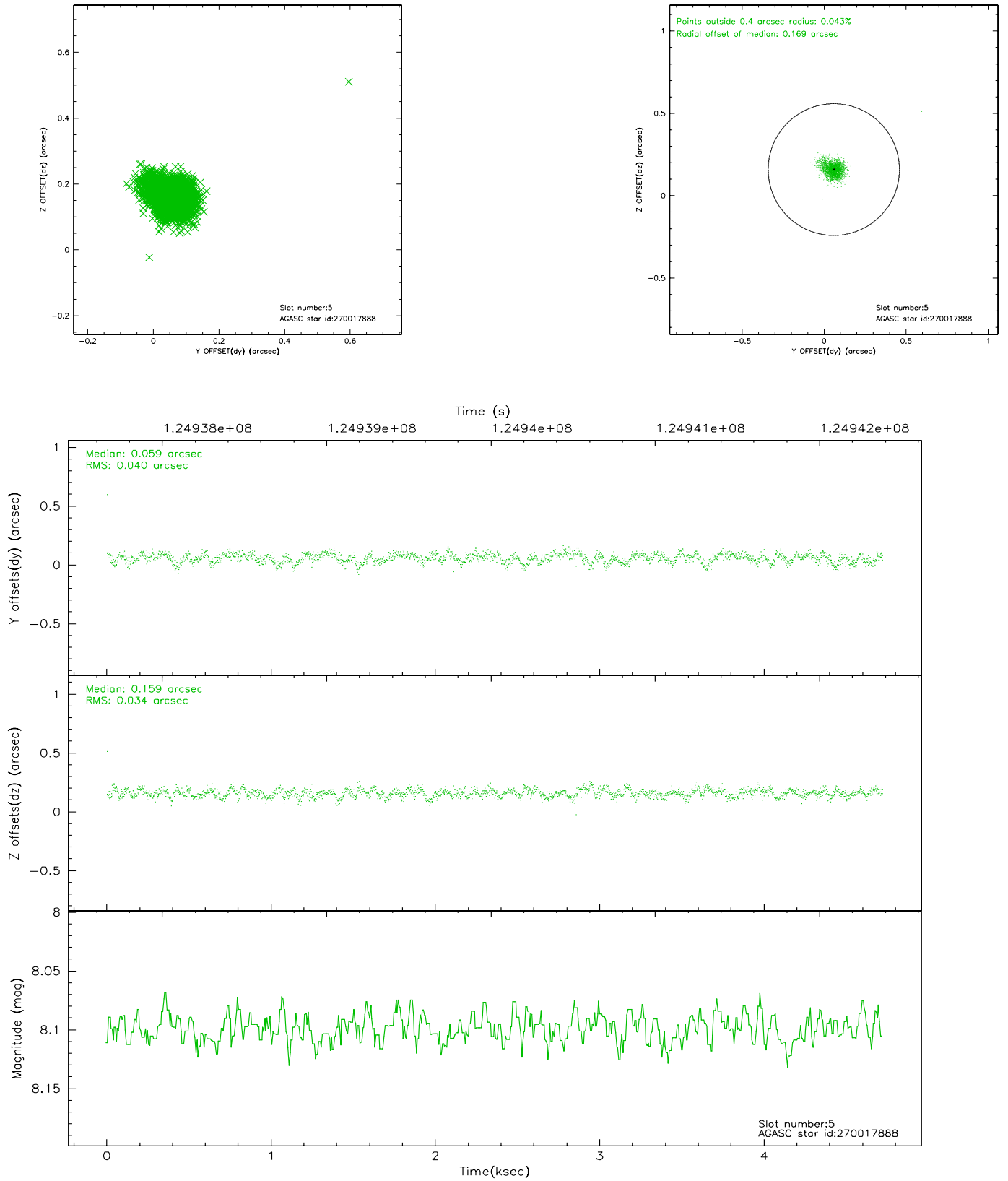
### 2.4.1 Slot 3



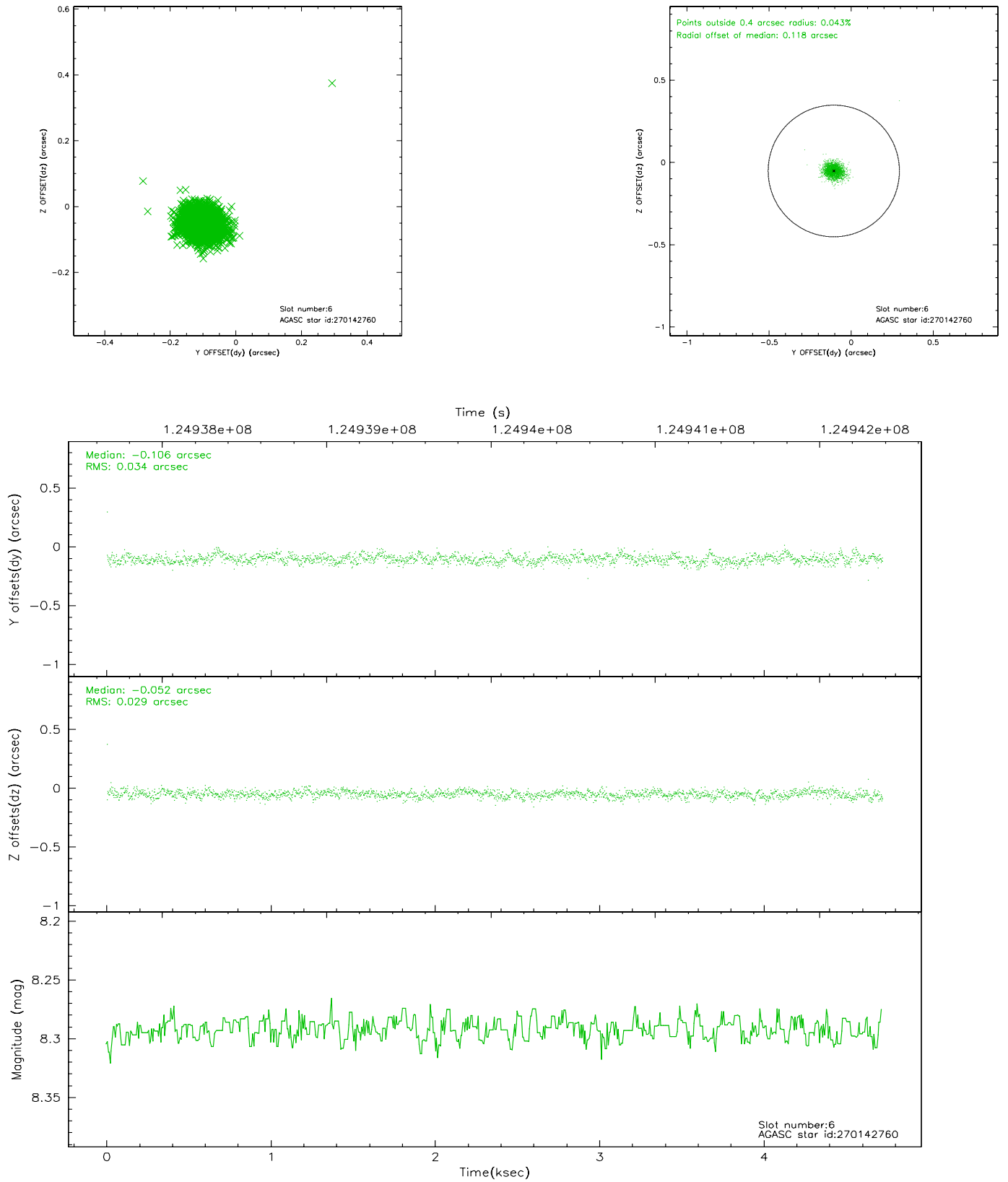
## 2.4.2 Slot 4



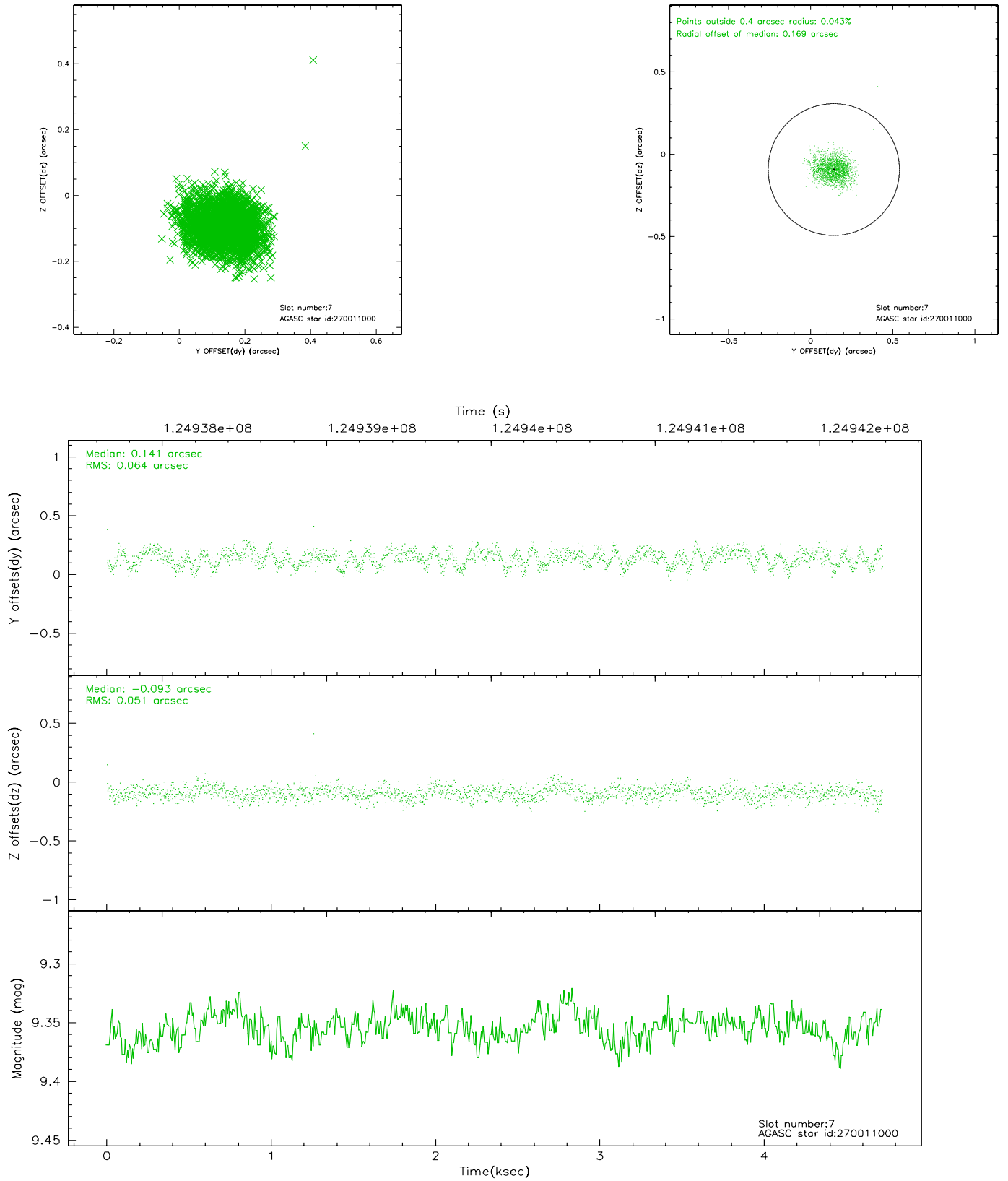
### 2.4.3 Slot 5



## 2.4.4 Slot 6

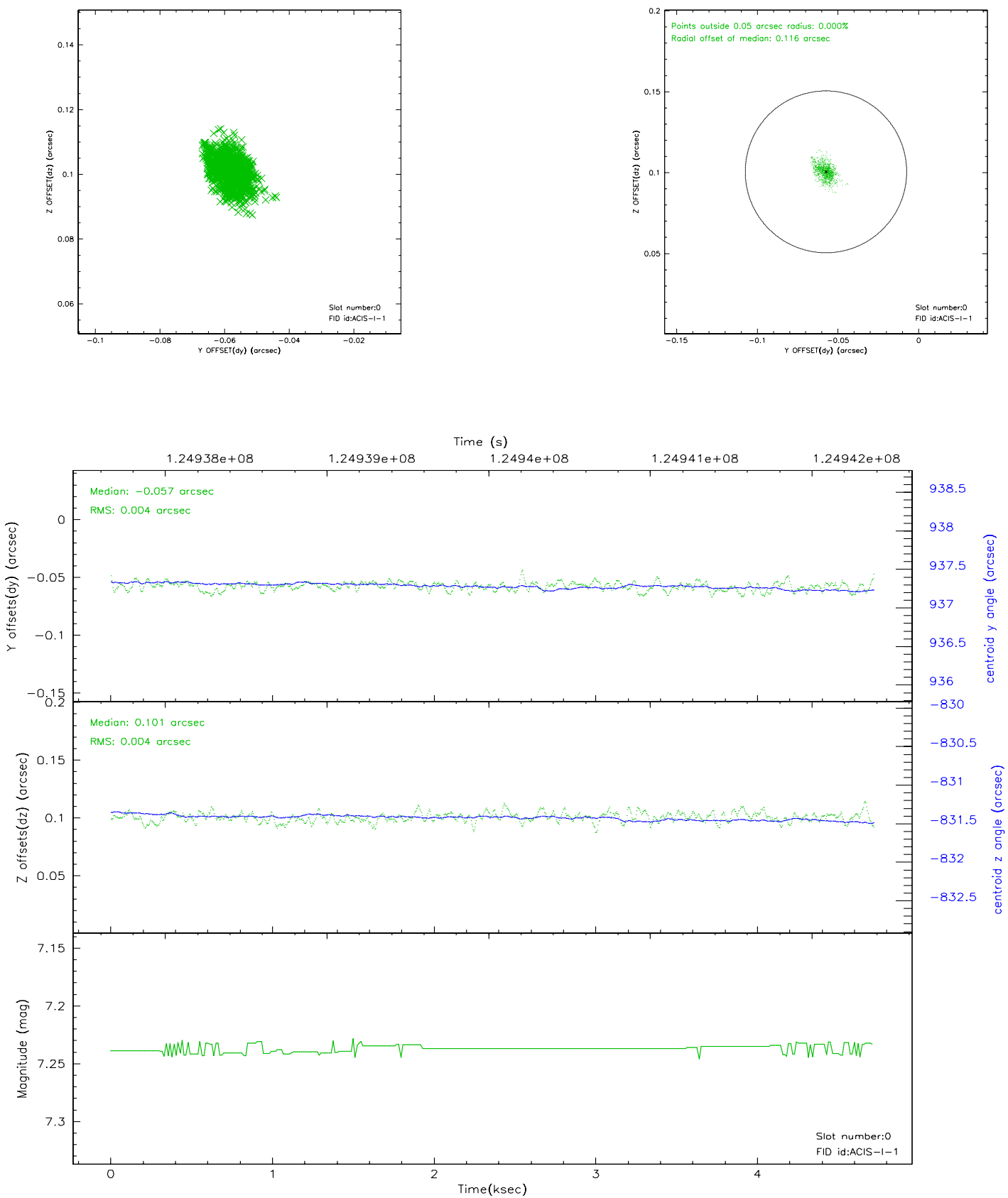


## 2.4.5 Slot 7

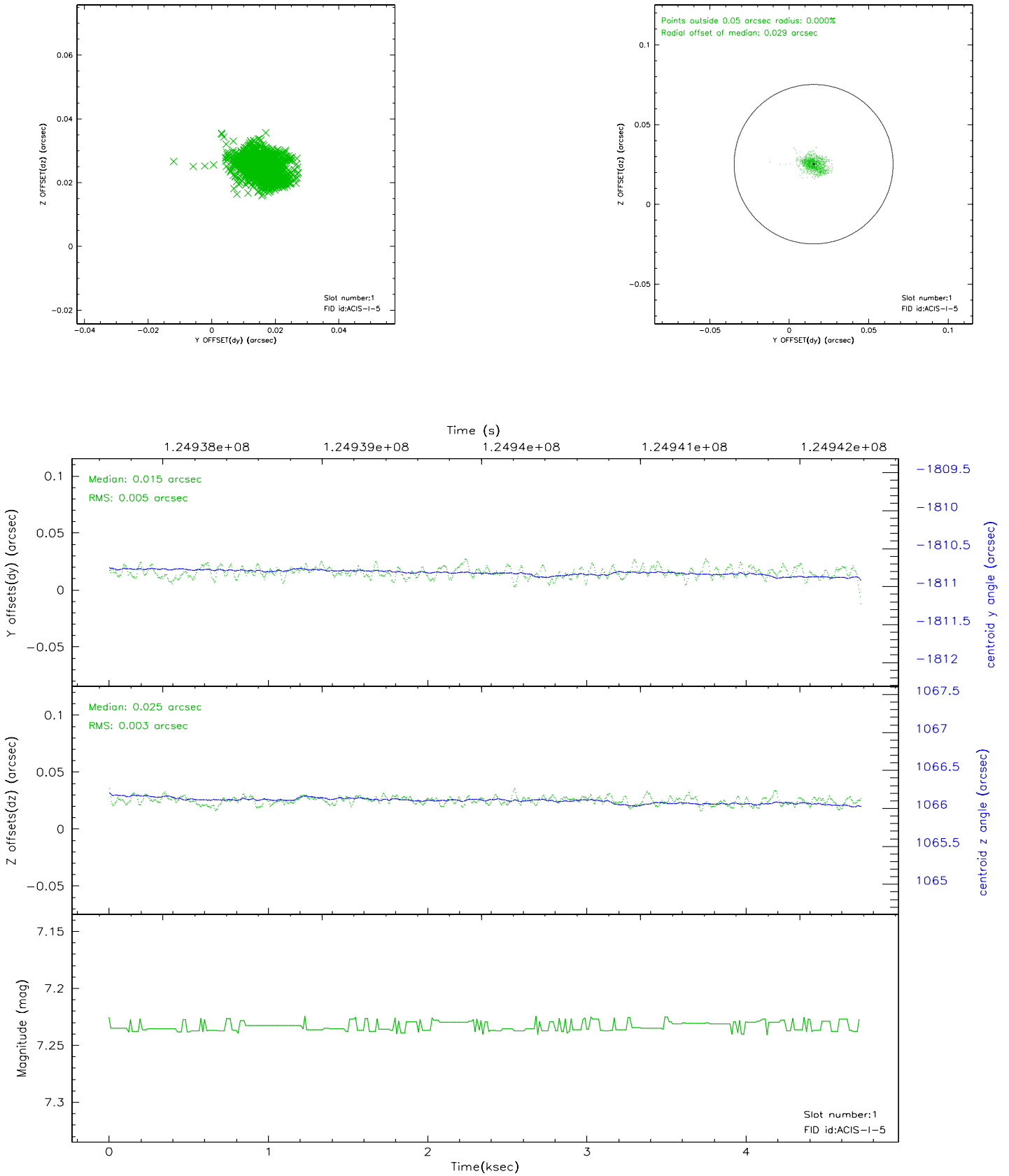


## 2.5 FID Slots

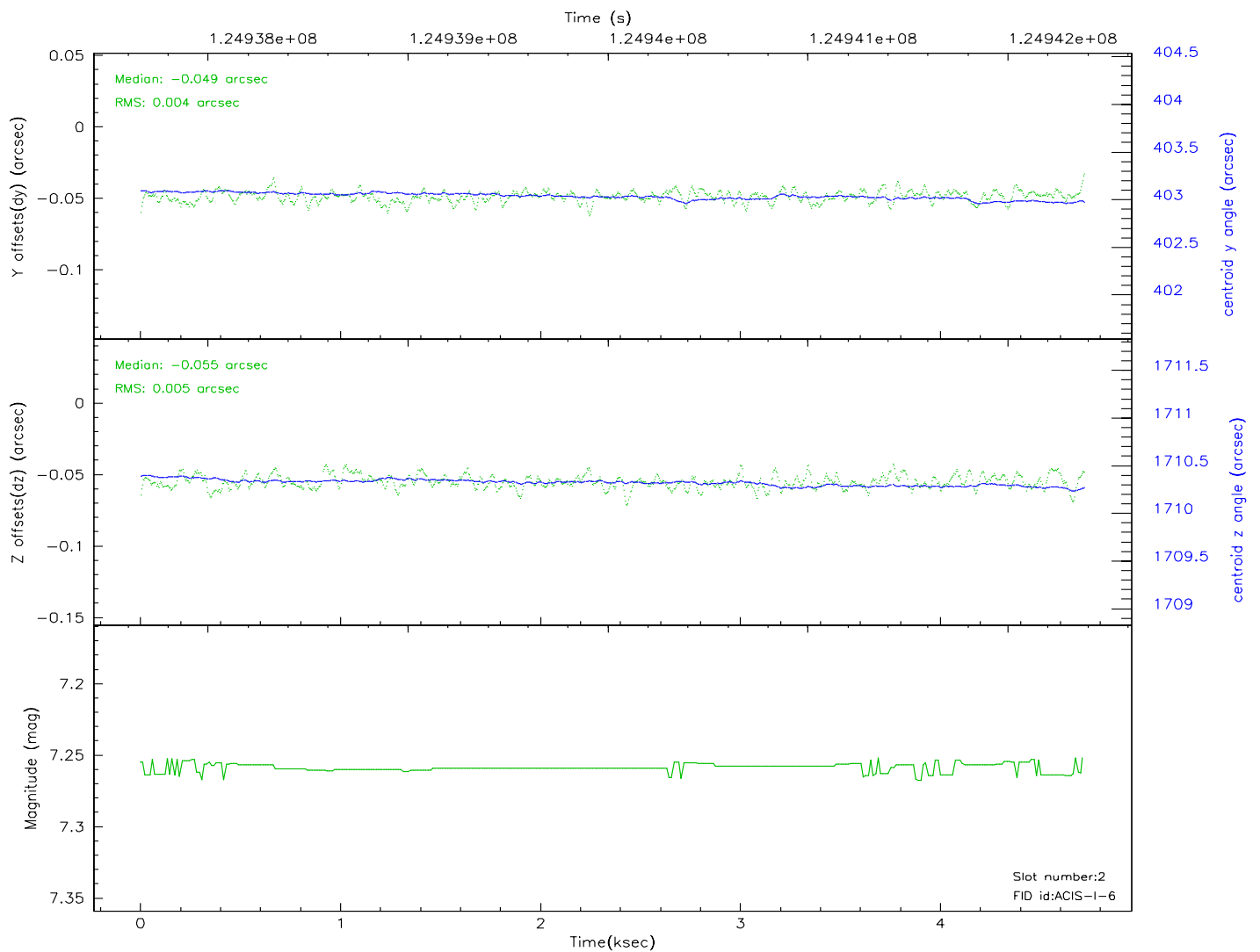
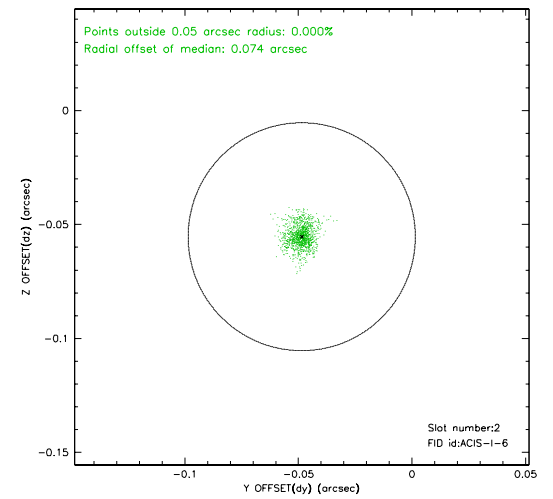
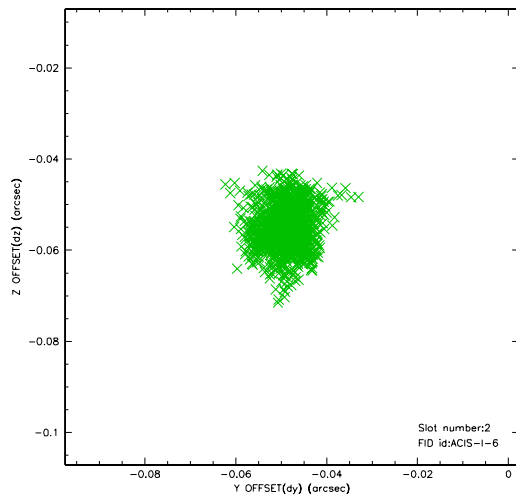
### 2.5.1 Slot 0



## 2.5.2 Slot 1

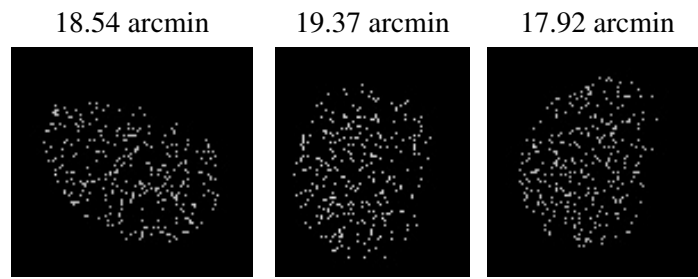


### 2.5.3 Slot 2





### 3 Point Sources



## A Summary

### A.1 Status

V&V Scientist	Beth Sundheim
V&V Date (YYYY-MM-DD)	2007.01.18
V&V Edition	1
V&V Disposition and Status	OK
V&V Charge Time	3.465

### A.2 Comments