

V&V Reference Report

L2 ASCDS Version : 7.6.10

Observation 2260 - L2 Version 001
Chandra X-Ray Center

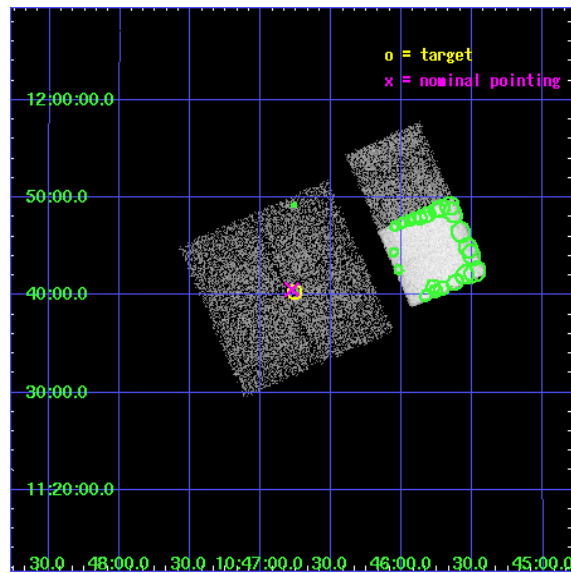
L2 Processing Date : Jun 14 2007

Contents

1	Front	2
2	OBI	3
2.1	OBI	3
2.1.1	Images	3
2.1.2	Bias	3
2.1.3	Parameters	4
2.1.4	Events	4
2.2	Compared Parameters	5
2.3	Aspect	6
2.4	Star Slots	9
2.4.1	Slot 3	9
2.4.2	Slot 4	10
2.4.3	Slot 5	11
2.4.4	Slot 6	12
2.4.5	Slot 7	13
2.5	FID Slots	14
2.5.1	Slot 0	14
2.5.2	Slot 1	15
2.5.3	Slot 2	16
3	Point Sources	17
A	Summary	18
A.1	Status	18
A.2	Comments	18

1 Front

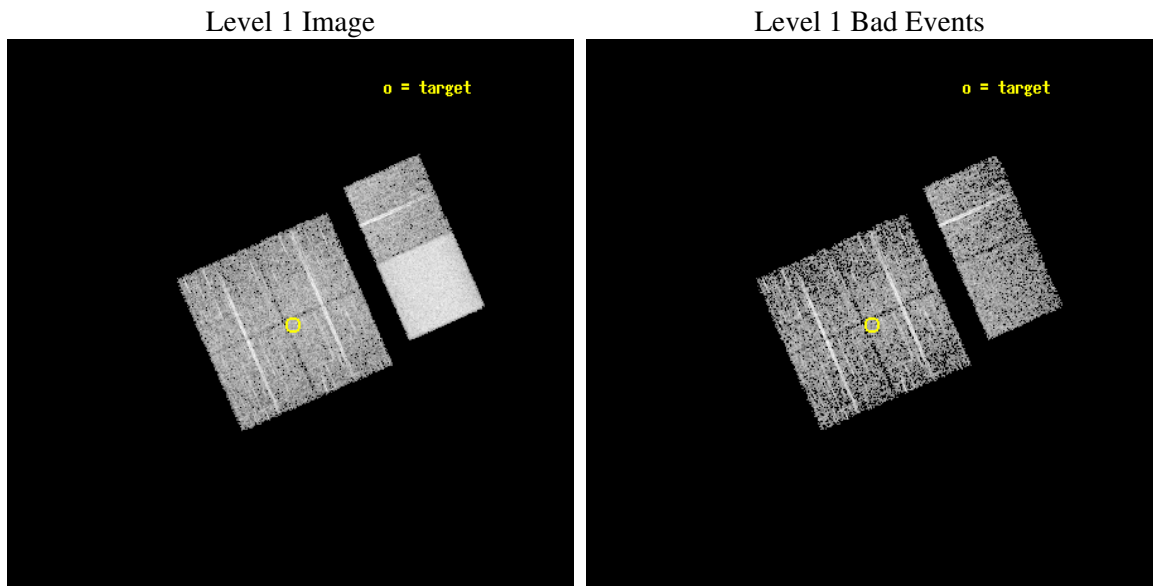
seq_num	900087
obs_id	2260
title	CHANDRA OBSERVATION OF HARD X-RAY SOURCES DISCOVERED WITH ASCA
observer	Dr Yoshihiro Ueda
object	AGX~J104645+1140
dtcycle	0
cycle	P
ra_targ	161.69125
dec_targ	11.673111
ra_nom	161.69486207431
dec_nom	11.676420354372
roll_nom	66.199970055927
revision	2
ontime	4352.0000040531
livetime	4296.892359542
ontime0	4352.0000040531
ontime1	4352.0000040531
ontime2	4352.0000040531
ontime3	4352.0000040531
ontime6	4352.0000040531
ontime7	4352.0000040531
l2events	83667



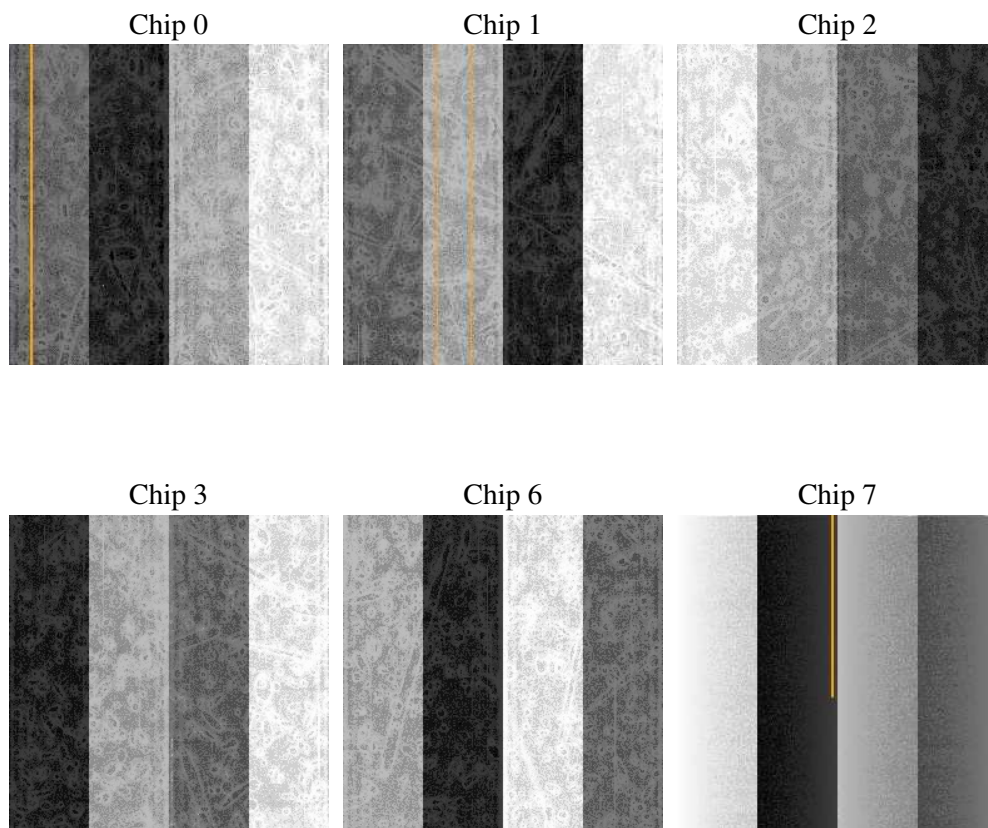
2 OBI

2.1 OBI

2.1.1 Images



2.1.2 Bias



2.1.3 Parameters

obi_num	0
ascdsver	7.6.10
caldsver	3.4.0
date	2007-06-14T11:25:21
revision	2

sched_exp_time	4400.000000
ontime	4352.0000040531
ontime0	4352.0000040531
ontime1	4352.0000040531
ontime2	4352.0000040531
ontime3	4352.0000040531
ontime6	4352.0000040531
ontime7	4352.0000040531
l1events	217698

2.1.4 Events

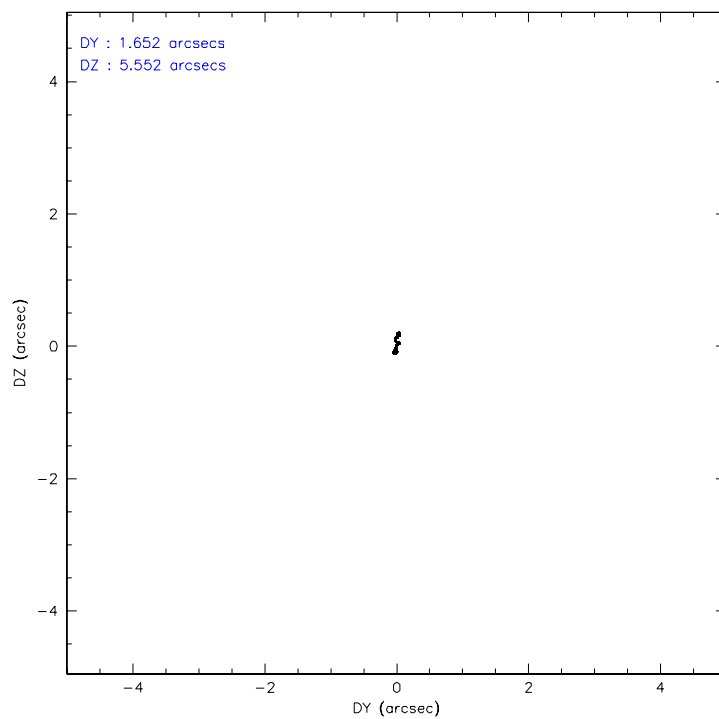
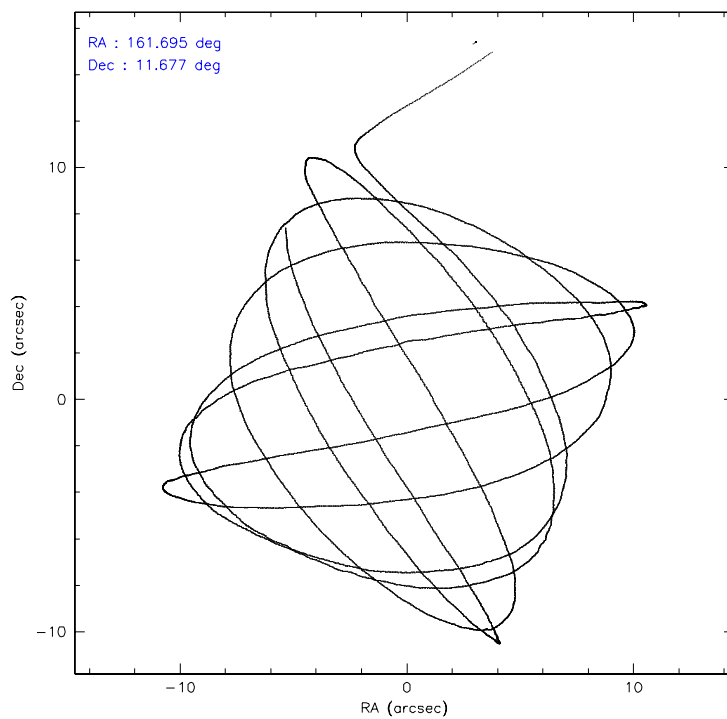
	ccd 0	ccd 1	ccd 2	ccd 3	ccd 6	ccd 7
level 1 events	25466	25176	26221	26420	28813	85602
rejected events	21445	20970	22150	22477	23267	20375
rejected %	84%	83%	84%	85%	80%	23%

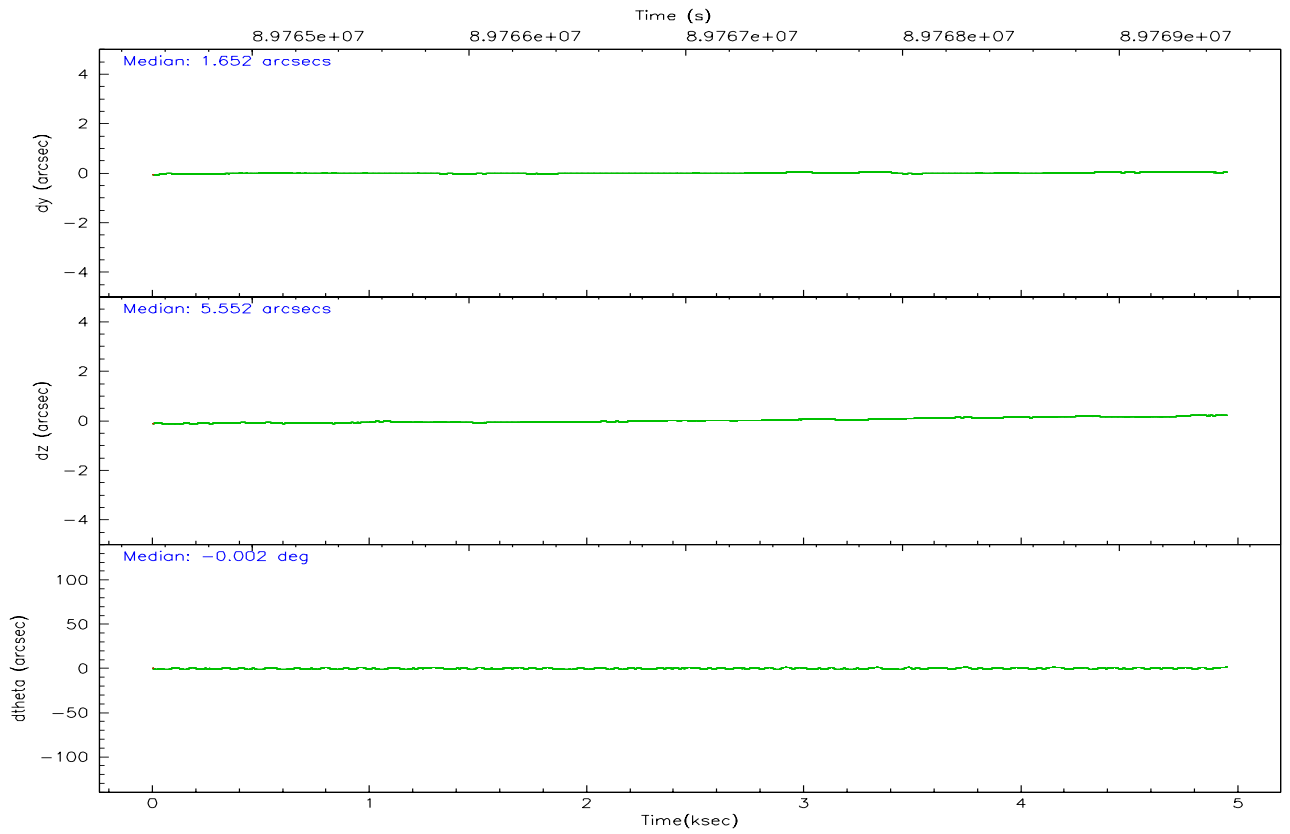
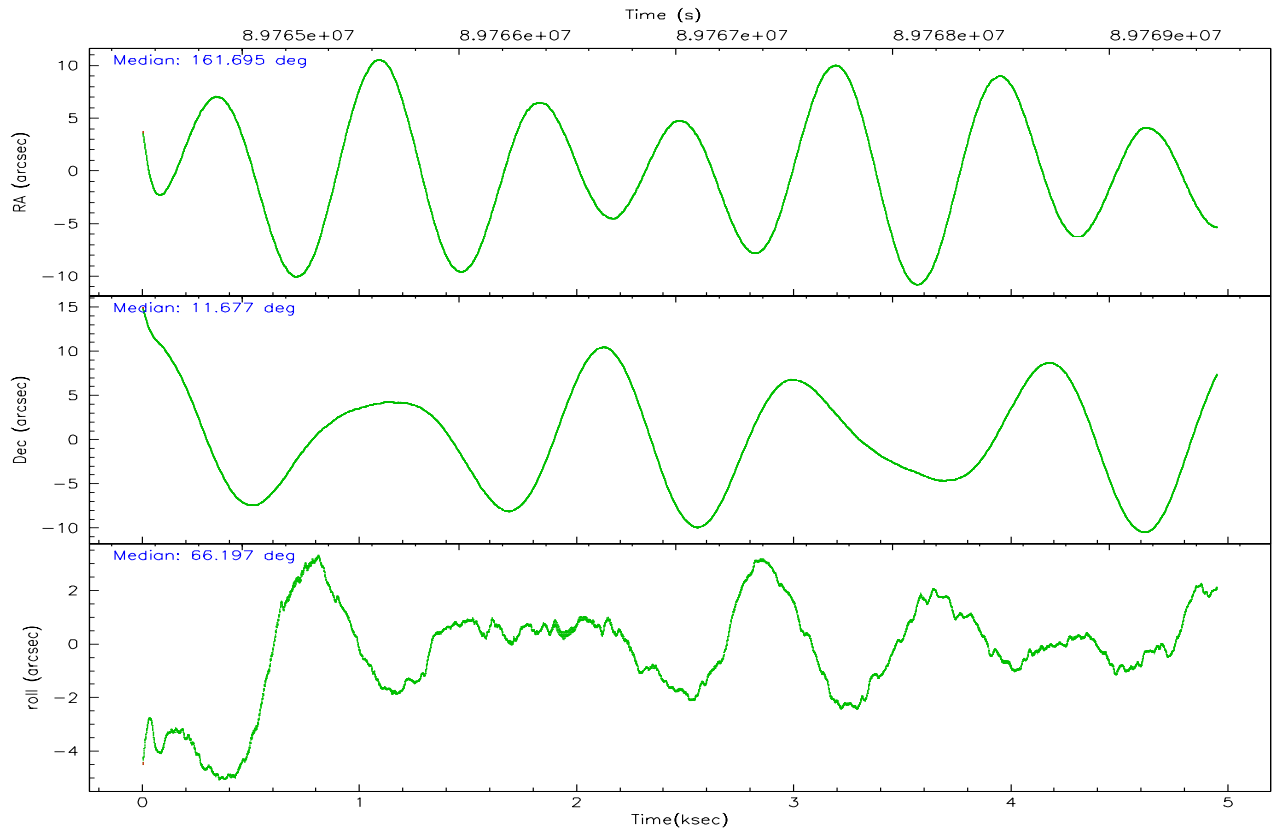
	ccd 0	ccd 1	ccd 2	ccd 3	ccd 6	ccd 7
grade 0 events	2102	2208	2288	2112	3400	8967
	8%	8%	8%	7%	11%	10%
grade 1 events	13	10	10	15	17	32
	0%	0%	0%	0%	0%	0%
grade 2 events	797	743	789	745	914	12515
	3%	2%	3%	2%	3%	14%
grade 3 events	320	347	300	295	336	5464
	1%	1%	1%	1%	1%	6%
grade 4 events	286	332	231	297	298	5429
	1%	1%	0%	1%	1%	6%
grade 5 events	918	970	863	939	1086	3395
	3%	3%	3%	3%	3%	3%
grade 6 events	526	585	473	500	611	32956
	2%	2%	1%	1%	2%	38%
grade 7 events	20504	19981	21267	21517	22151	16844
	80%	79%	81%	81%	76%	19%

2.2 Compared Parameters

Parameter	Planned	Actual	Parameter	Planned	Actual
Instrument	ACIS	ACIS	Obspar format version number	6	6
Detector	ACIS-012367	ACIS-012367	Obspar file type	PREDICTED	ACTUAL
Grating	NONE	NONE	Obspar update status	NONE	UPDATED
Data mode	FAINT	FAINT	Number of optional ACIS chips dropped	0	0
Observation mode	POINTING	POINTING	On-chip summing requested	N	N
Pointing RA	161.697836	161.6948620743149	Subarray requested	NONE	NONE
Pointing Dec	11.649080	11.67642035437212	Alternating exposures requested	N	N
Pointing Roll	65.990682	66.19997005592735	Primary exposure time	0.000000	3.2
SIM focus pos (mm)	-0.782348	-0.7809083437167272			
SIM defocus (mm)	0	0.001439871863259334			
SIM translation stage pos (mm)	-233.592463	-233.5874344608287			
SIM translation stage offset (mm)	0	-0.005018542100998502			
Observation start time	89765095.184000	89763957.32557701			
Observation start date	2000-11-04T22:43:51	2000-11-04T22:25:57			
Observation end time	89769495.184000	89770044.800807			
Observation end date	2000-11-04T23:57:11	2000-11-05T00:07:24			
Read mode	TIMED	TIMED			

2.3 Aspect



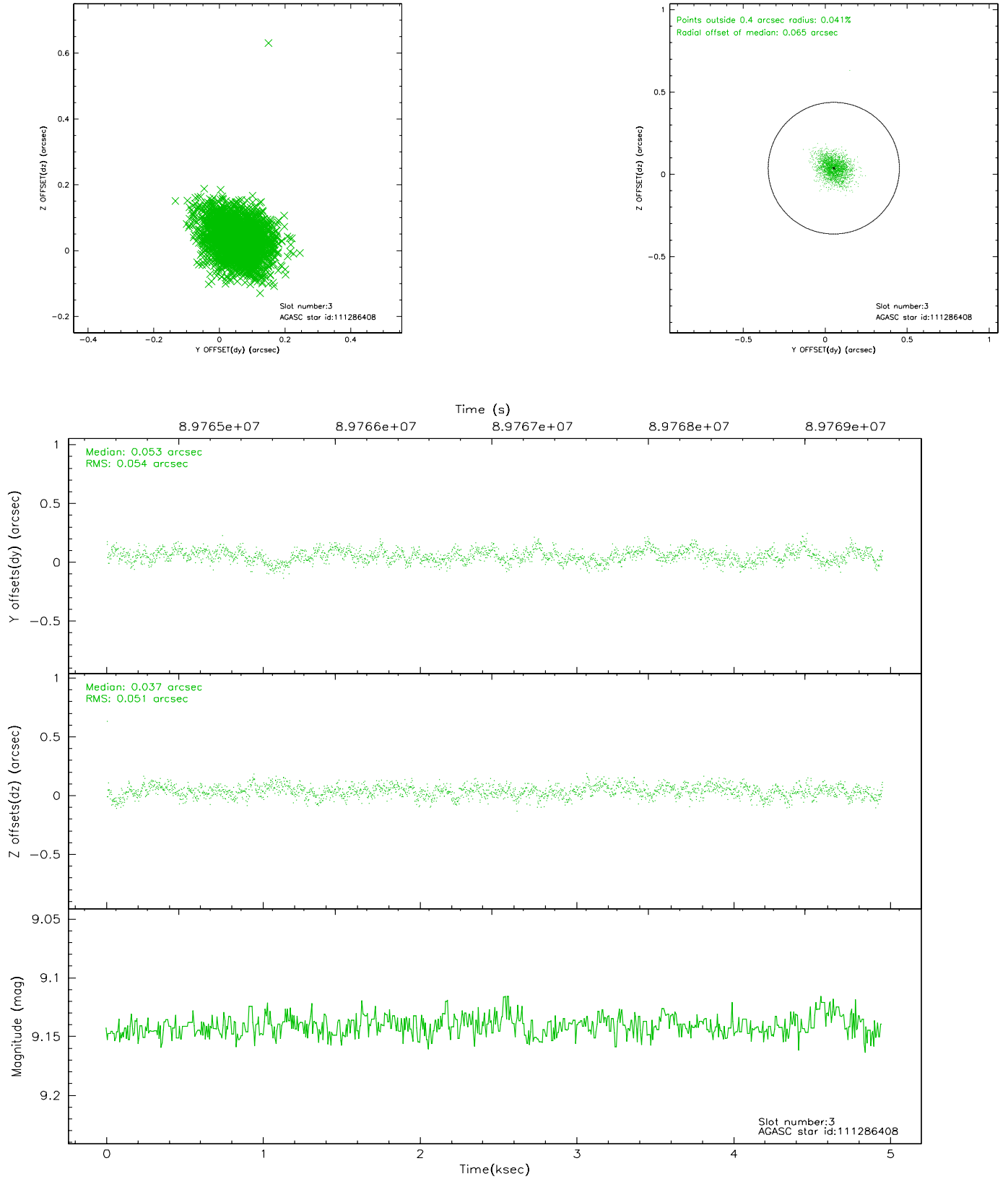


Slot Statistics

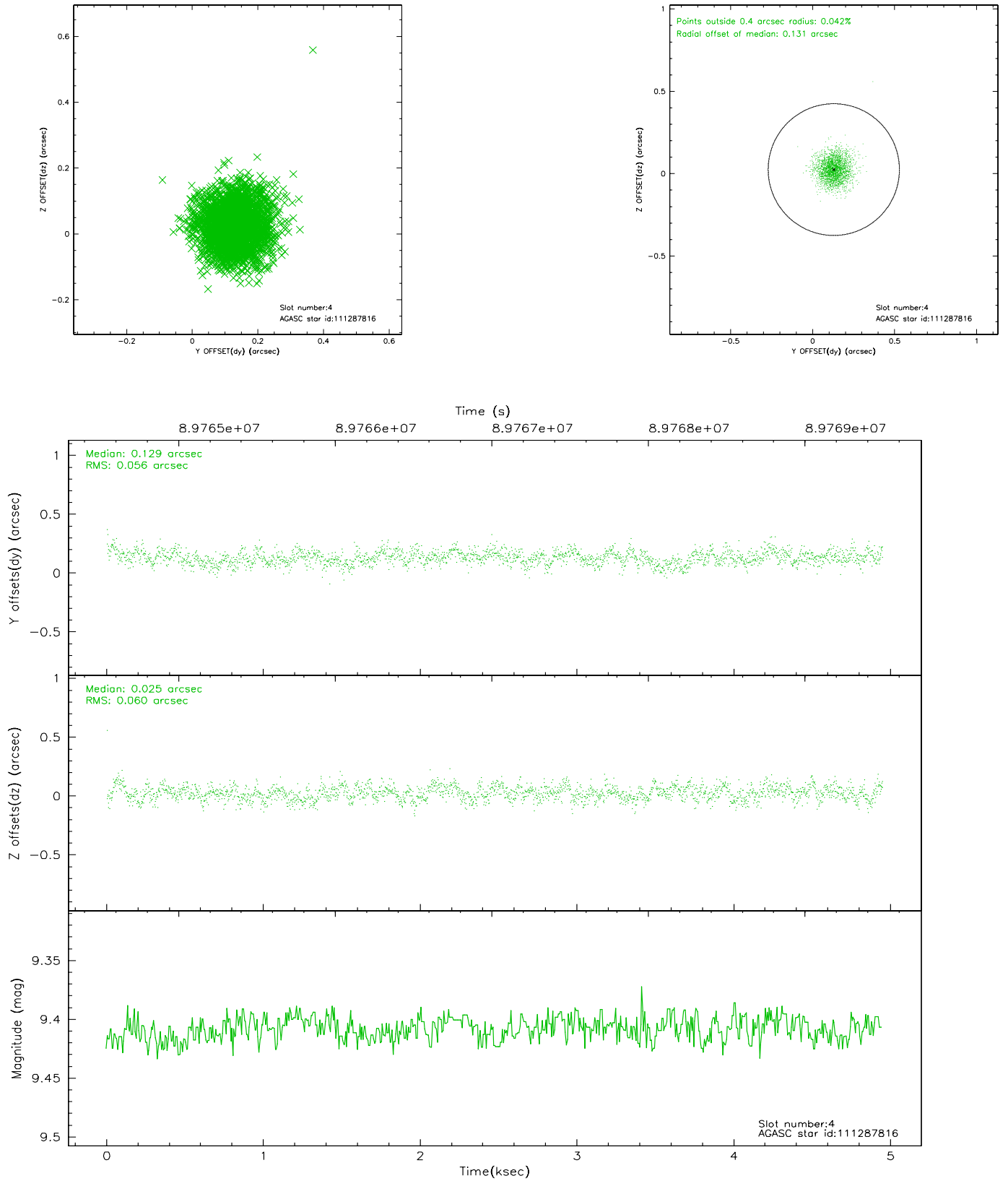
slot	status	id	mag	n_pts	med_dy	med_dz	dr1	dr2	ra	dec	mean_y	mean_z
0	FID	ACIS-I-2	7.15	1207	-0.024	-0.025	0.009	0.016	0.000000	0.000000	-756.02	-835.32
1	FID	ACIS-I-4	7.18	1207	-0.076	0.030	0.005	0.009	0.000000	0.000000	2157.43	1070.30
2	FID	ACIS-I-5	7.23	1207	-0.000	0.064	0.009	0.014	0.000000	0.000000	-1808.24	1069.58
3	GUIDE	111286408	9.14	2414	0.053	0.037	0.077	0.127	161.652685	11.184124	-1594.74	-534.66
4	GUIDE	111287816	9.41	2409	0.129	0.025	0.087	0.140	161.778752	10.926407	-2261.41	-1319.38
5	GUIDE	111285992	9.75	2409	-0.233	0.070	0.090	0.147	162.048017	11.891969	1299.43	-770.39
6	GUIDE	111280632	9.87	2412	0.134	-0.314	0.128	0.203	161.089942	11.335611	-1902.09	1501.97
7	GUIDE	111286848	9.55	2413	-0.087	0.180	0.097	0.159	162.100662	11.107254	-1203.51	-2091.64

2.4 Star Slots

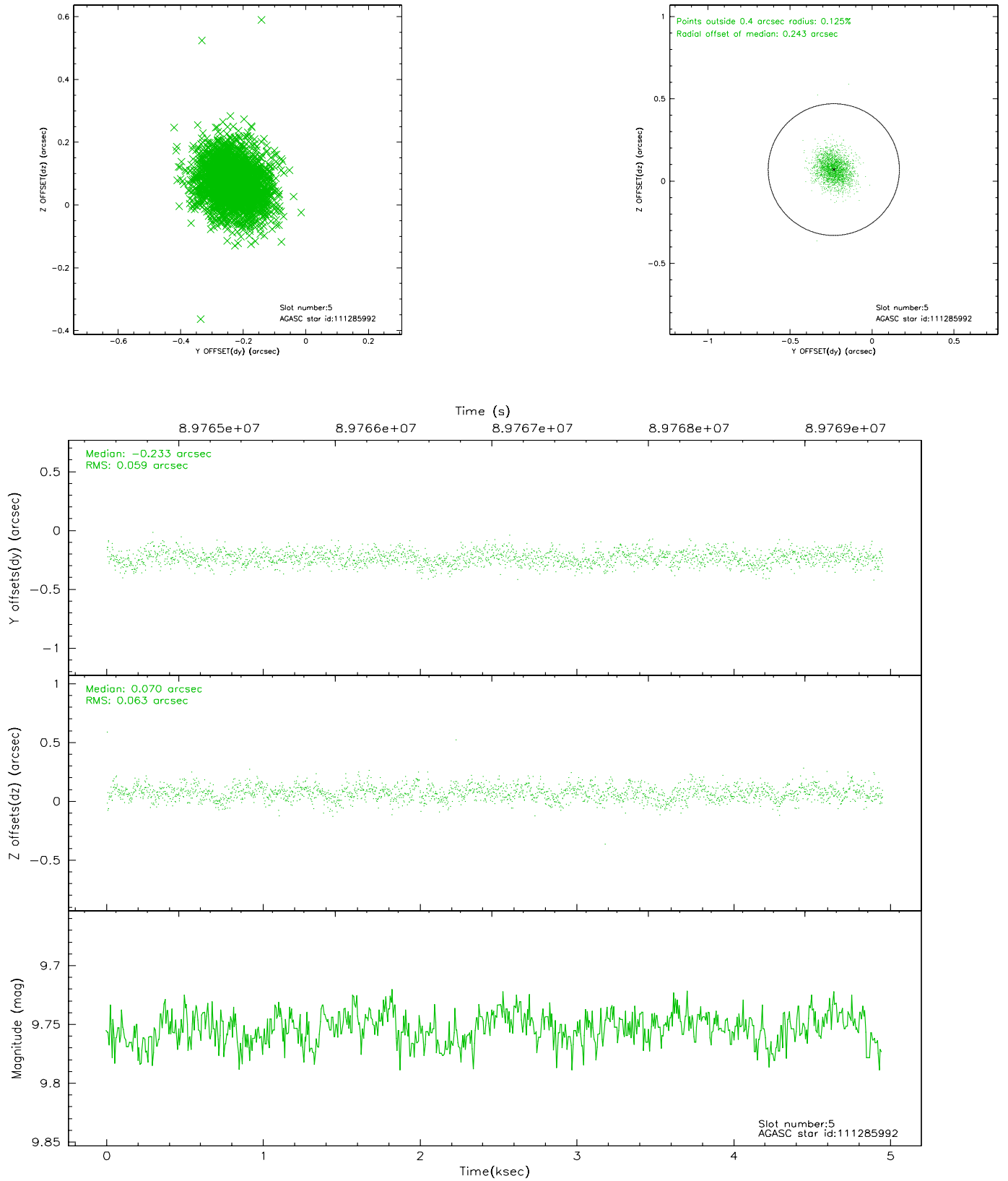
2.4.1 Slot 3



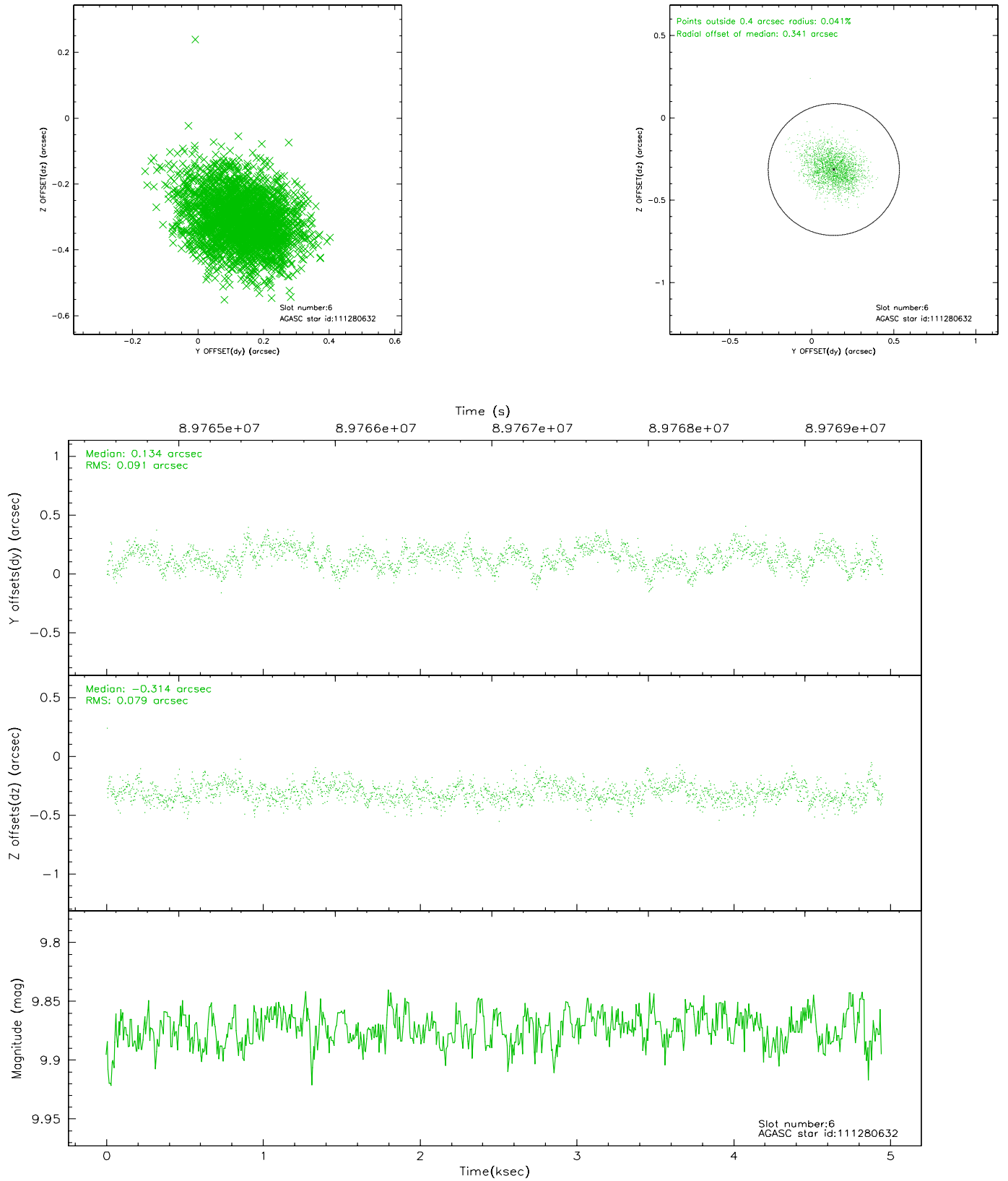
2.4.2 Slot 4



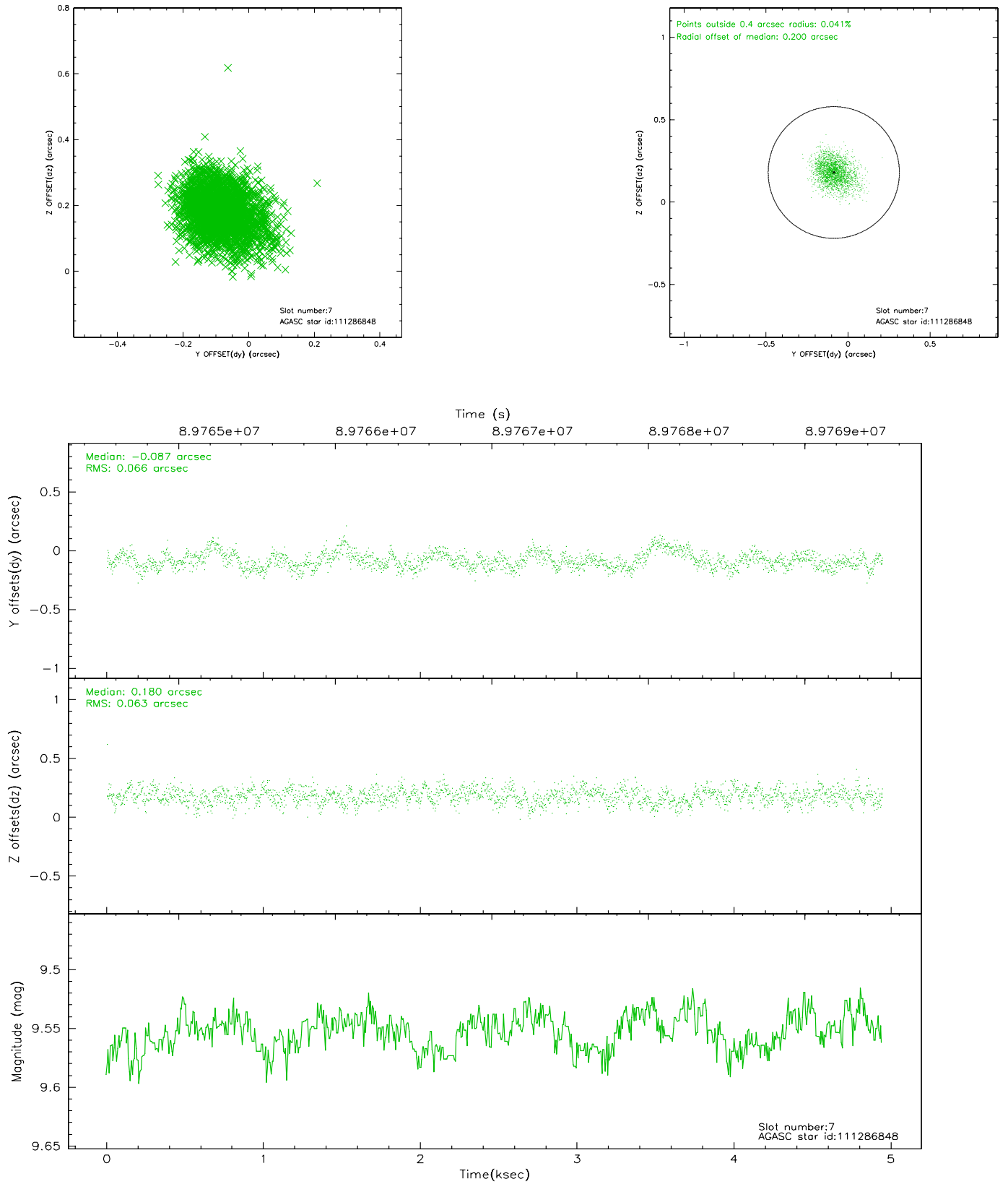
2.4.3 Slot 5



2.4.4 Slot 6

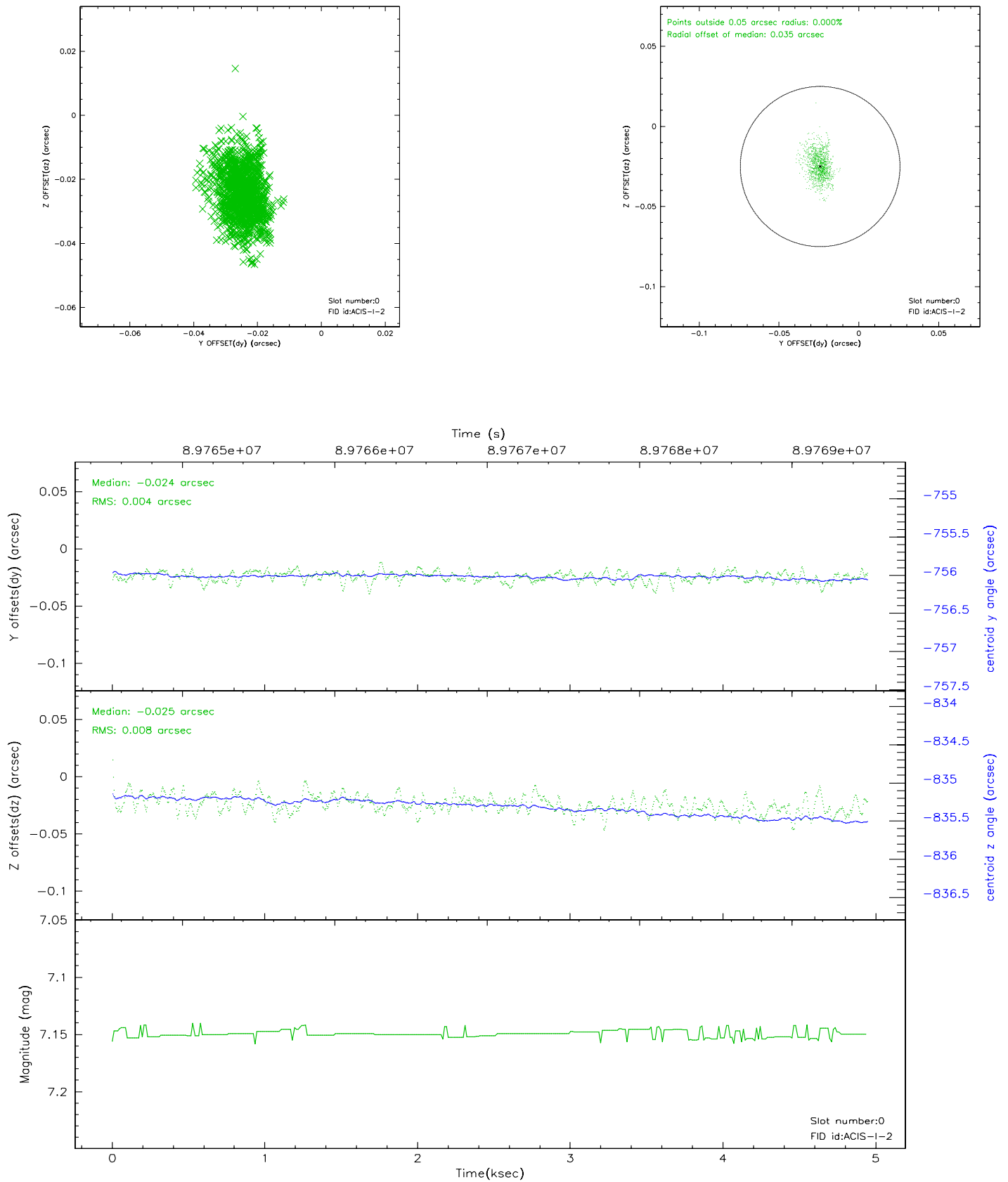


2.4.5 Slot 7

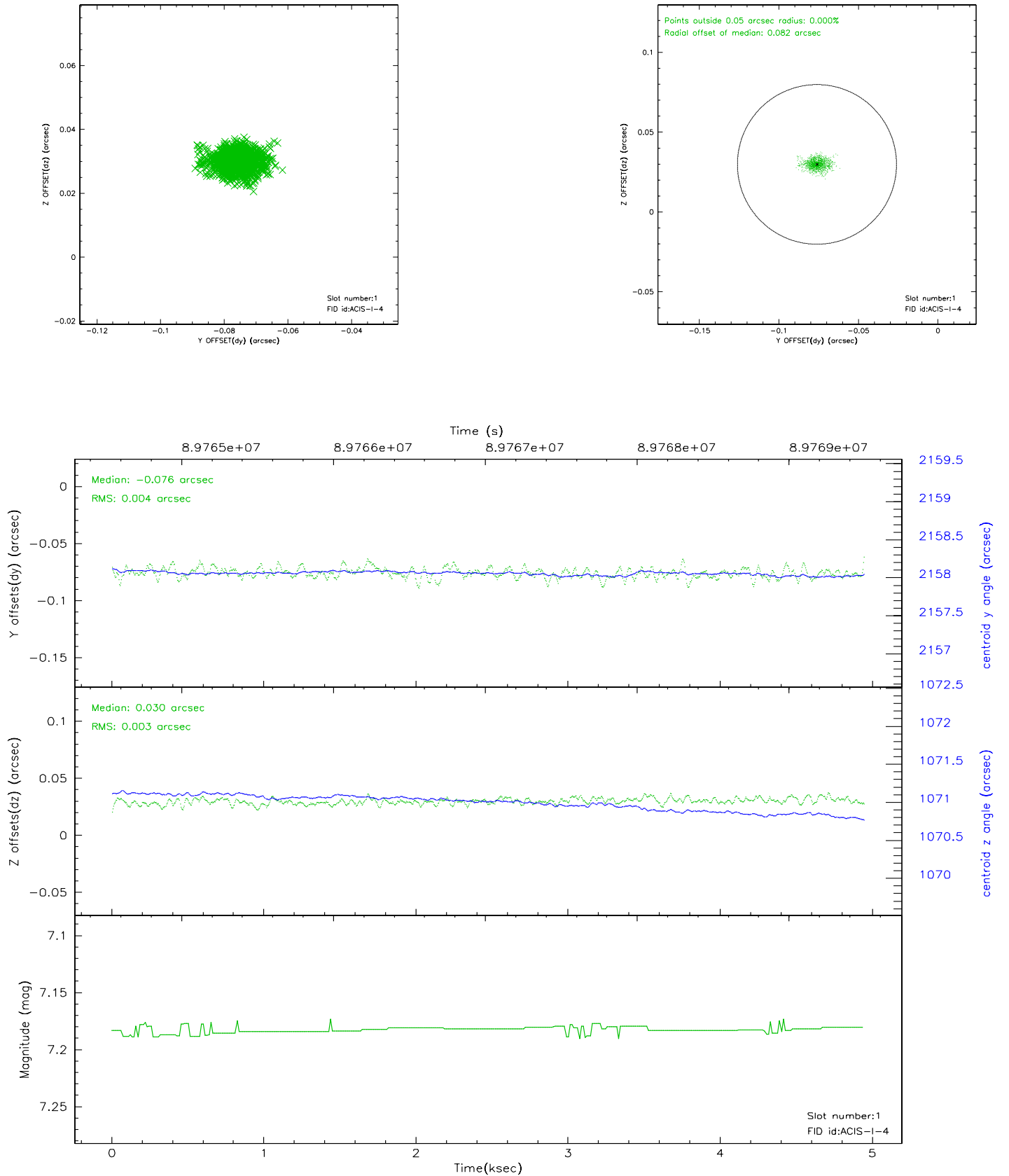


2.5 FID Slots

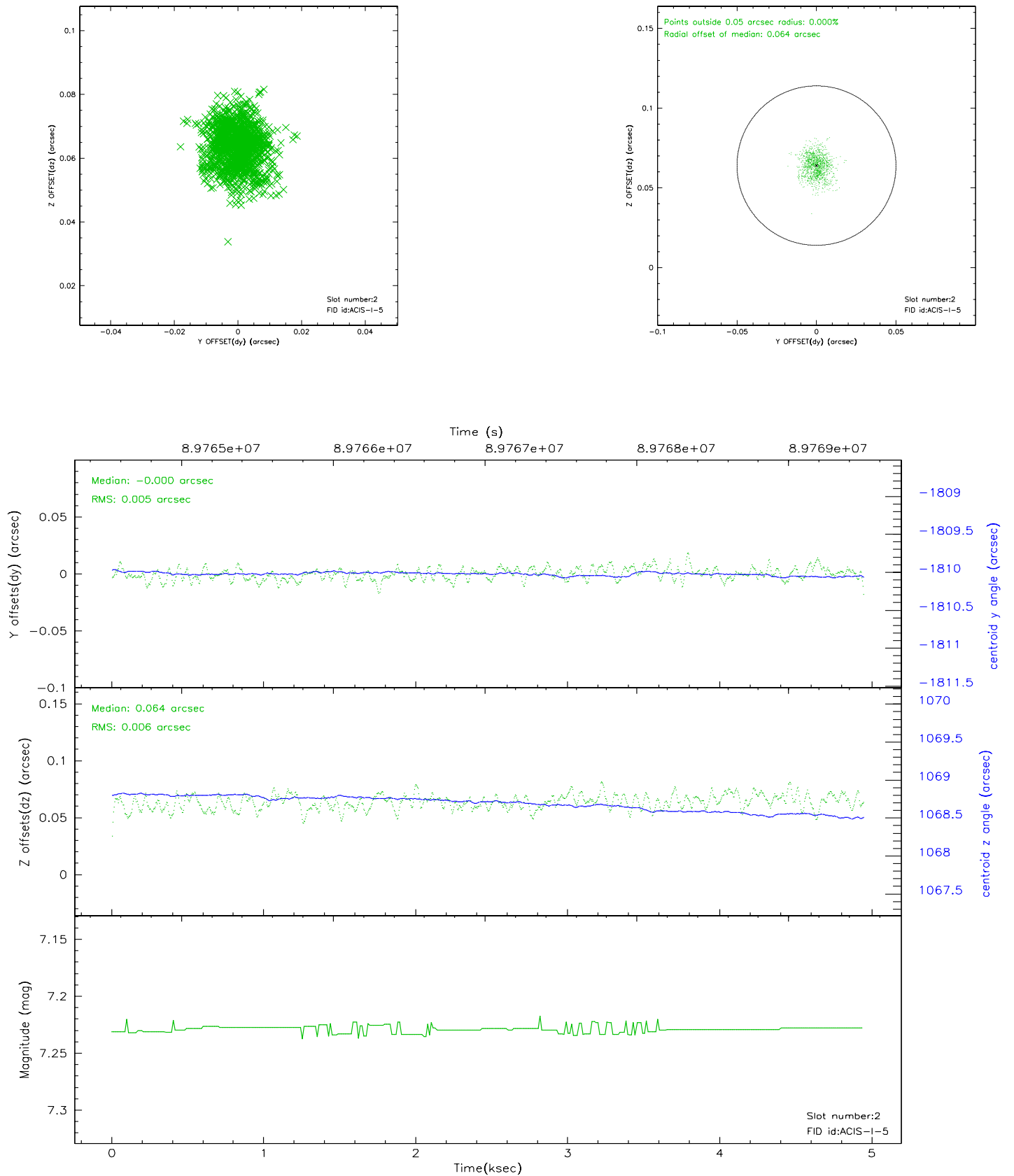
2.5.1 Slot 0



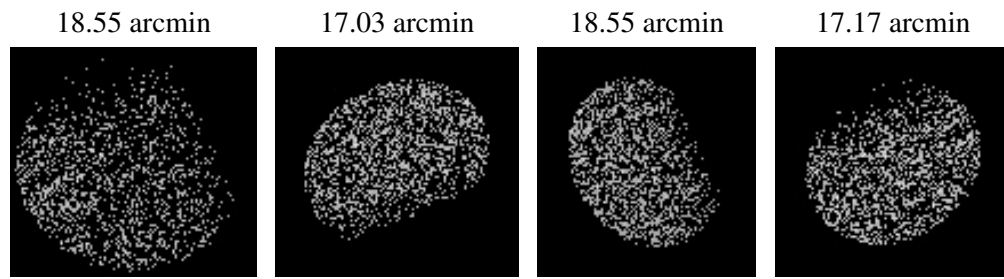
2.5.2 Slot 1



2.5.3 Slot 2



3 Point Sources



A Summary

A.1 Status

V&V Scientist	Jen Lauer
V&V Date (YYYY-MM-DD)	2007.06.14
V&V Edition	1
V&V Disposition and Status	OK
V&V Charge Time	4.355

A.2 Comments