

V&V Reference Report

L2 ASCDS Version : 8.4.5

Observation 2251 - L2 Version 3
Chandra X-Ray Center

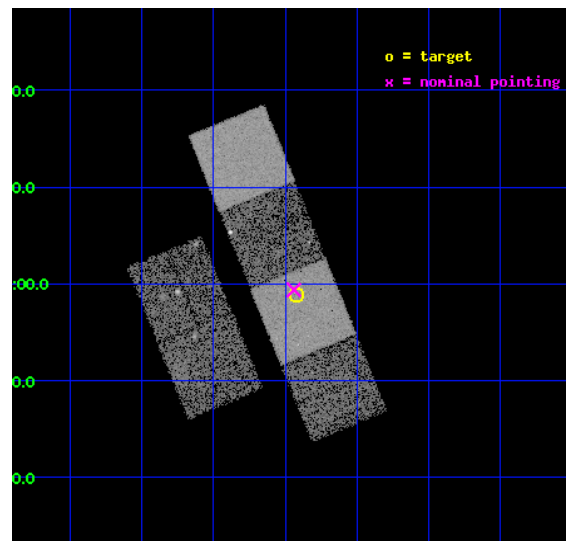
L2 Processing Date : Sep 6 2012

Contents

1	Front	2
2	OBI	3
2.1	OBI	3
2.1.1	Images	3
2.1.2	Bias	3
2.1.3	Parameters	4
2.1.4	Events	4
2.2	Compared Parameters	5
2.3	Aspect	6
2.4	Star Slots	9
2.4.1	Slot 3	9
2.4.2	Slot 4	10
2.4.3	Slot 5	11
2.4.4	Slot 6	12
2.4.5	Slot 7	13
2.5	FID Slots	14
2.5.1	Slot 0	14
2.5.2	Slot 1	15
2.5.3	Slot 2	16
A	Summary	17
A.1	Status	17
A.2	Comments	17

1 Front

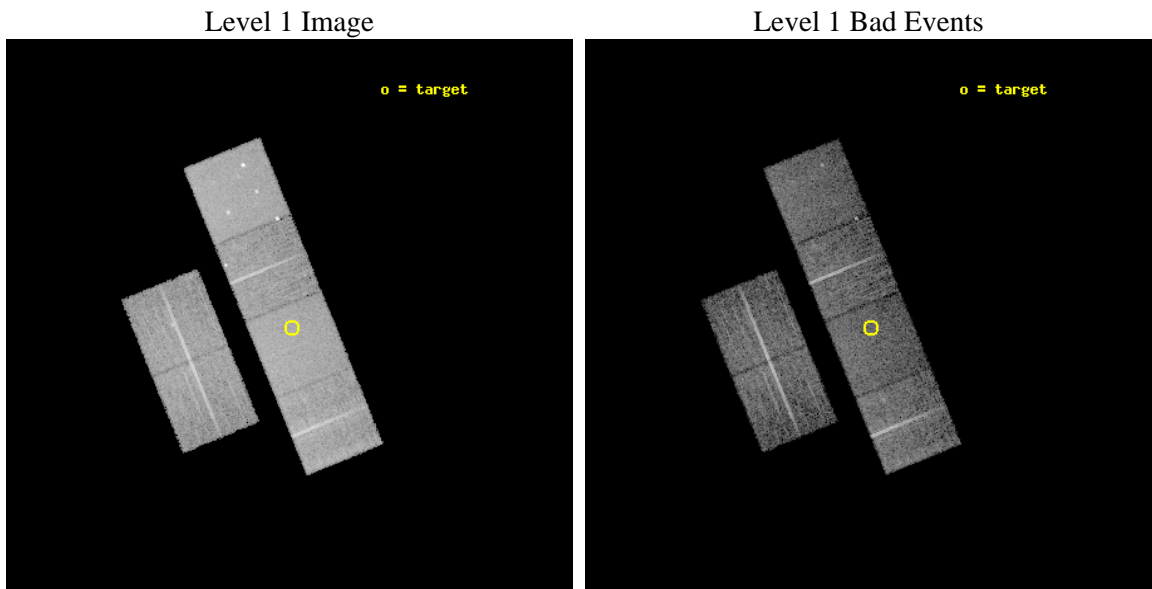
seq_num	900078	Sequence number
obs_id	2251	Observation id
title	THE NATURE OF NARROW-LINE, FIR-LUMINOUS, X-RAY GALAXIES	Proposal t
observer	PROFESSOR TOM SHANKS	Principal investigator
object	F864X:012	Source name
dtcycle	0	
cycle	P	events from which exps? Prim/Second/Both
ra_targ	206.104583	Observer's specified target RA [deg]
dec_targ	-0.018611	Observer's specified target Dec [deg]
ra_nom	206.10988937587	Nominal RA [deg]
dec_nom	-0.010290113711784	Nominal Dec [deg]
roll_nom	67.806605232657	Nominal Roll [deg]
revision	3	Processing version of data
ontime	9756.8000090718	Sum of GTIs [s]
livetime	9633.2535325173	Livetime [s]
ontime2	9753.5590488315	Sum of GTIs [s]
ontime3	9756.8000090718	Sum of GTIs [s]
ontime5	9756.8000090718	Sum of GTIs [s]
ontime6	9756.8000090718	Sum of GTIs [s]
ontime7	9756.8000090718	Sum of GTIs [s]
ontime8	9753.559078753	Sum of GTIs [s]
l2events	91198	Number of level 2 events



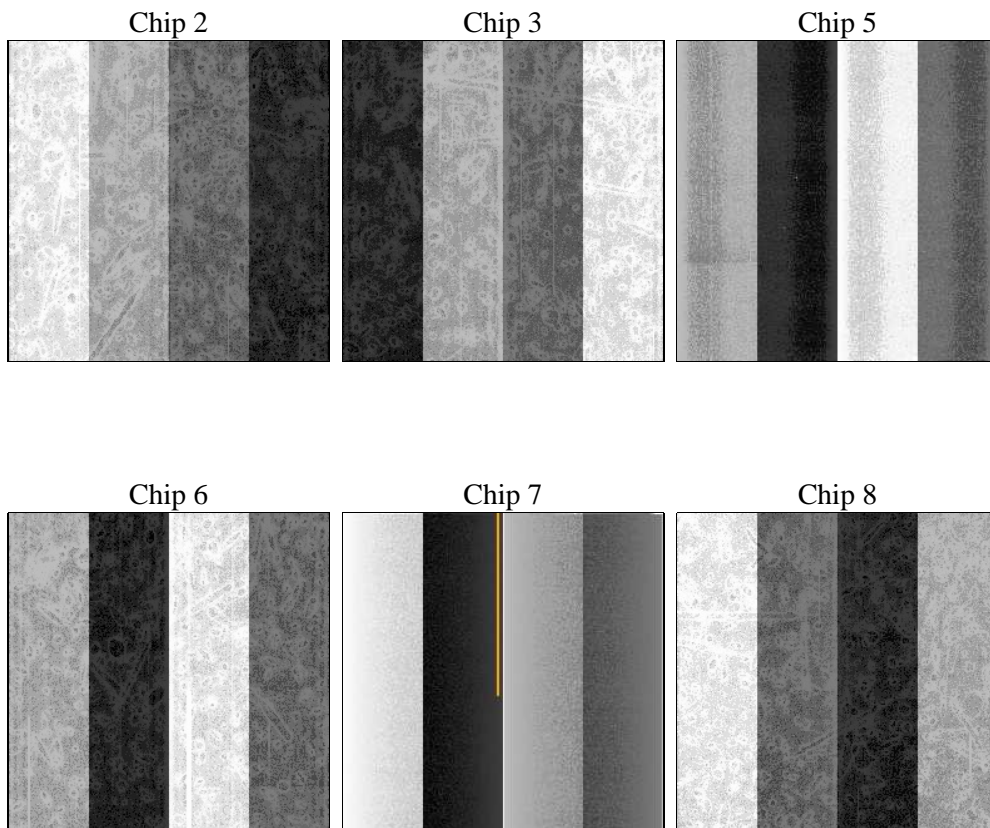
2 OBI

2.1 OBI

2.1.1 Images



2.1.2 Bias



2.1.3 Parameters

obi_num	0	Obi number	sched_exp_time	10000.000000	[s] Scheduled observation exposure time
ascdsver	8.4.5	Processing system revision	ontime	9756.8000090718	Sum of GTIs [s]
caldbver	4.5.1.1	 	ontime2	9753.5590488315	Sum of GTIs [s]
date	2012-09-06T09:27:52	Date and time of file creation	ontime3	9756.8000090718	Sum of GTIs [s]
revision	3	Processing version of data	ontime5	9756.8000090718	Sum of GTIs [s]
			ontime6	9756.8000090718	Sum of GTIs [s]
			ontime7	9756.8000090718	Sum of GTIs [s]
			ontime8	9753.559078753	Sum of GTIs [s]
			l1events	410854	Number of level 1 events

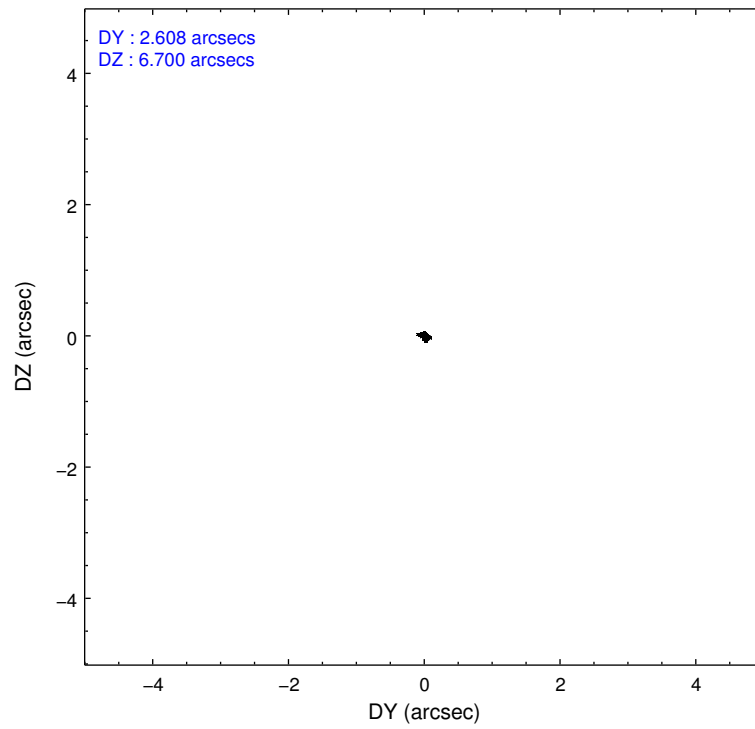
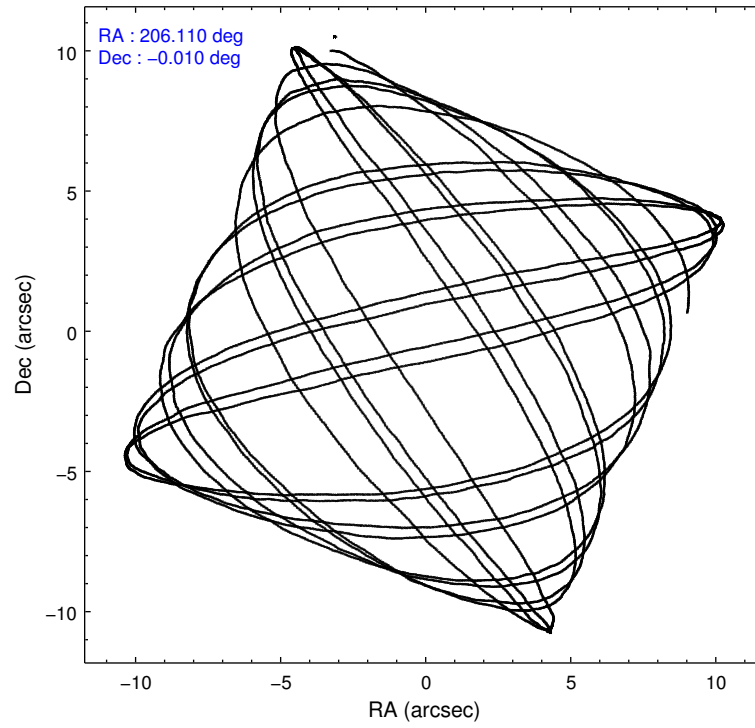
2.1.4 Events

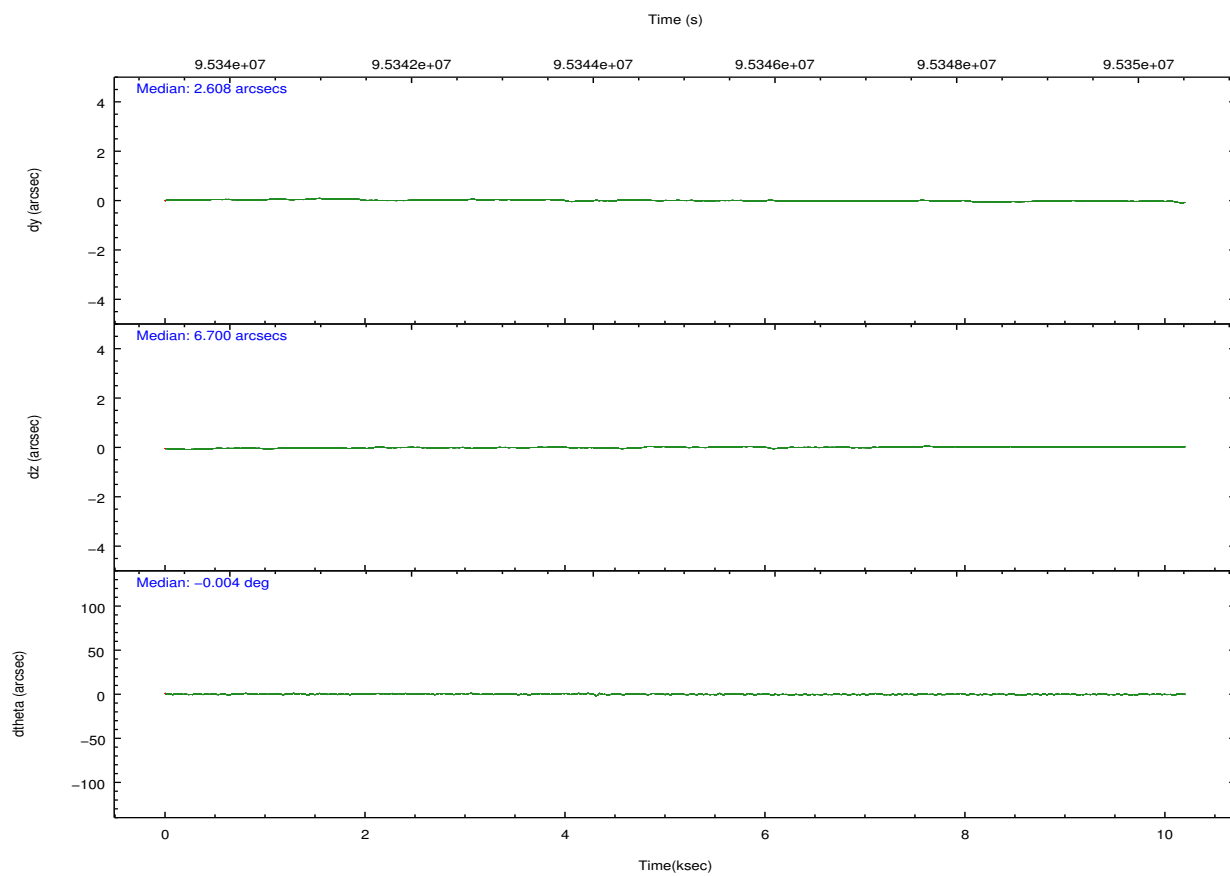
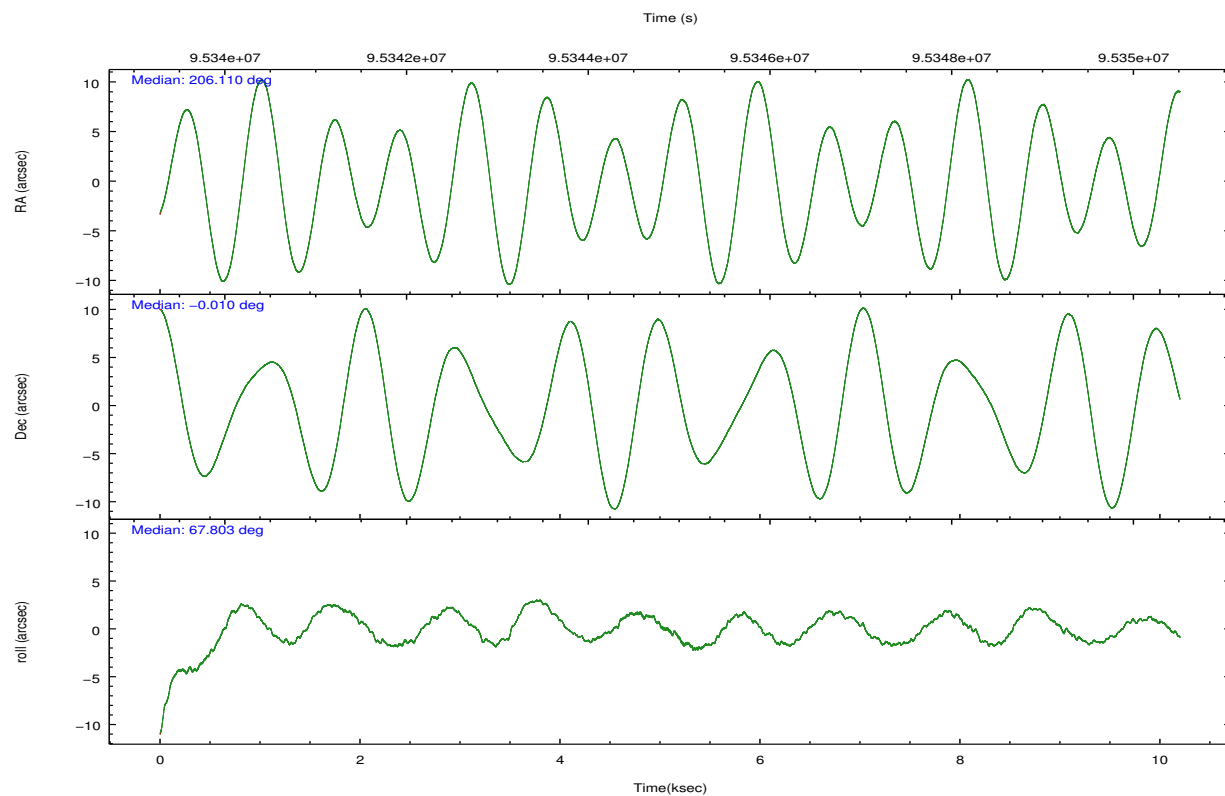
	ccd 2	ccd 3	ccd 5	ccd 6	ccd 7	ccd 8		ccd 2	ccd 3	ccd 5	ccd 6	ccd 7	ccd 8
level 1 events	59860	57467	84259	57860	75668	75740	grade 0 events	3308	3120	5889	3463	3160	4747
rejected events	52651	50621	44636	50279	43897	61236		5%	5%	6%	5%	4%	6%
rejected %	87%	88%	52%	86%	58%	80%	grade 1 events	26	26	232	29	64	47
								0%	0%	0%	0%	0%	0%
							grade 2 events	1483	1276	10959	1402	6235	3052
								2%	2%	13%	2%	8%	4%
							grade 3 events	655	610	1672	712	2769	1555
								1%	1%	1%	1%	3%	2%
							grade 4 events	615	671	1686	695	2888	1474
								1%	1%	2%	1%	3%	1%
							grade 5 events	1955	2135	6261	2475	7157	2998
								3%	3%	7%	4%	9%	3%
							grade 6 events	1150	1173	19439	1311	16732	3683
								1%	2%	23%	2%	22%	4%
							grade 7 events	50668	48456	38121	47773	36663	58184
								84%	84%	45%	82%	48%	76%

2.2 Compared Parameters

Parameter	Planned	Actual	Parameter	Planned	Actual
Instrument	ACIS	ACIS	Obspar format version number	7	7
Detector	ACIS-235678	ACIS-235678	Obspar file type	PREDICTED	ACTUAL
Grating	NONE	NONE	Obspar update status	NONE	UPDATED
Data mode	FAINT	FAINT	Number of optional ACIS chips dropped	0	0
Observation mode	POINTING	POINTING	On-chip summing requested	N	N
[deg] Pointing RA	206.113815	206.1098893758701	Subarray requested	NONE	NONE
[deg] Pointing Dec	-0.037362	-0.01029011371178404	Alternating exposures requested	N	N
[deg] Pointing Roll	67.649974	67.80660523265705	[s] Primary exposure time	0.000000	3.2
[mm] SIM focus pos	-0.684267	-0.6828225247311905			
[mm] SIM defocus	0	0.001444936568705701			
[mm] SIM translation stage pos	-190.132523	-190.1425803651734			
[mm] SIM translation stage offset	0	0.01005778216563158			
[s] Observation start time (MET)	95340001.184000	95339624.926007			
Observation start date	2001-01-08T11:18:57	2001-01-08T11:13:44			
[s] Observation end time (MET)	95350001.184000	95350351.55141801			
Observation end date	2001-01-08T14:05:37	2001-01-08T14:12:31			
Read mode	TIMED	TIMED			

2.3 Aspect



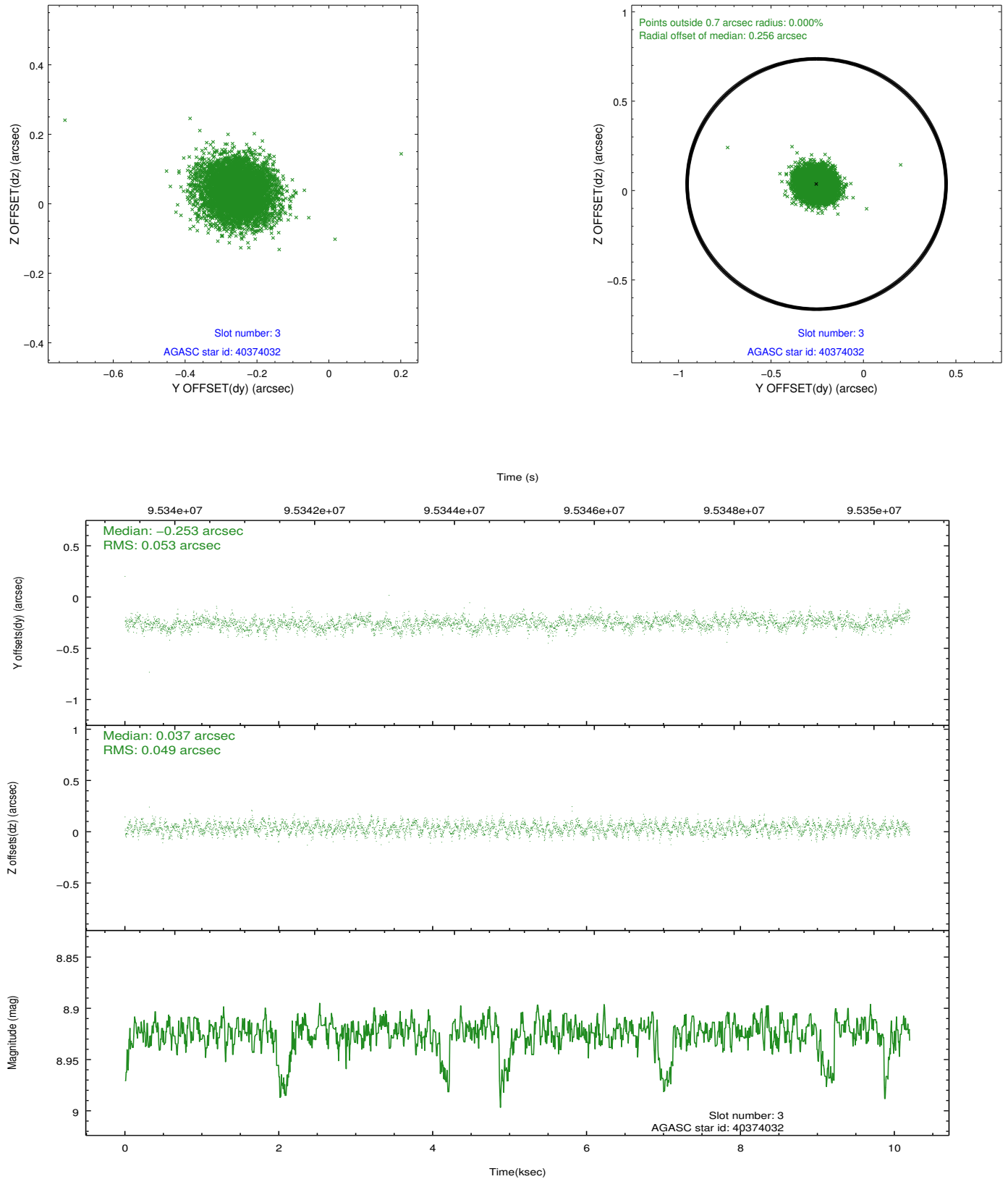


Slot Statistics

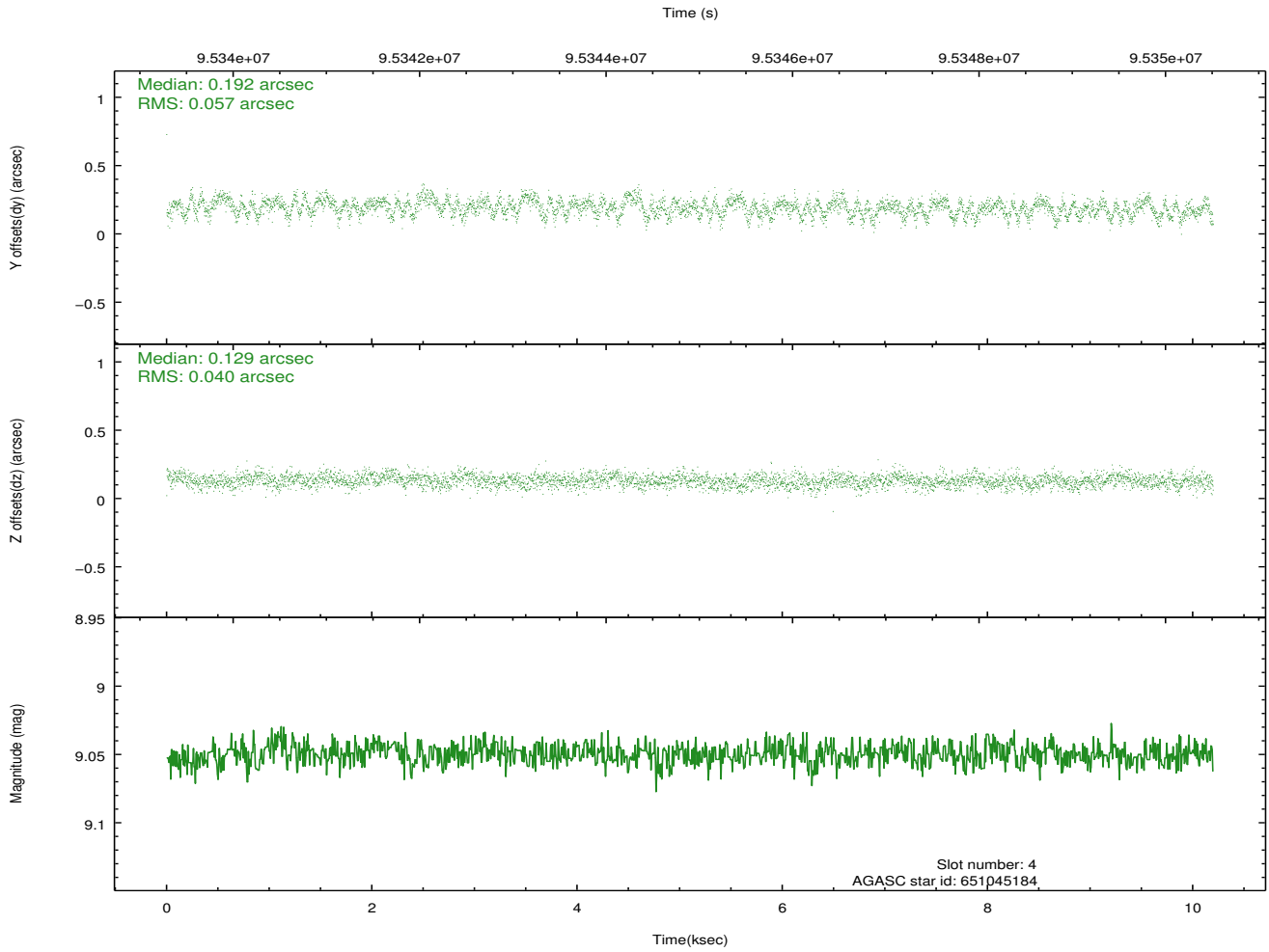
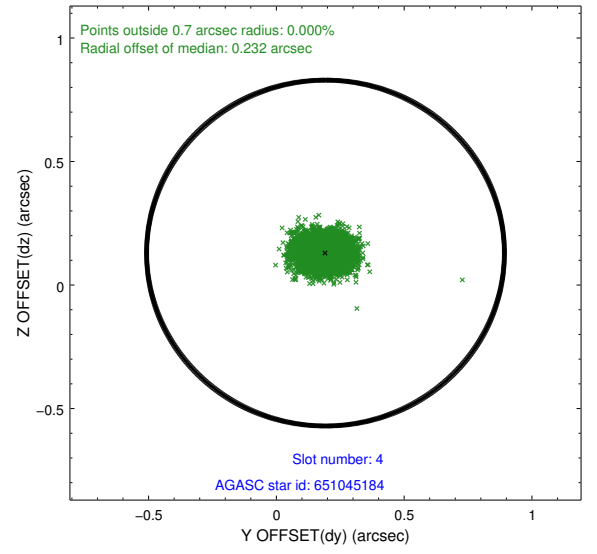
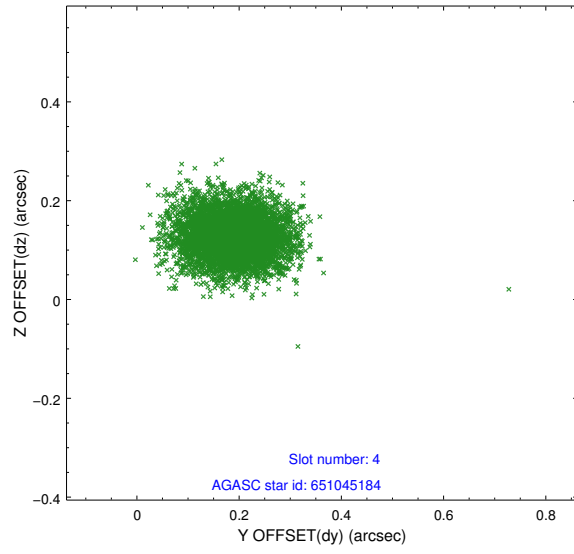
slot	status	id	mag	n_pts	med_dy	med_dz	dr1	dr2	ra	dec	mean_y	mean_z
0	FID	ACIS-S-2	7.11	2487	-0.022	0.008	0.013	0.018	0.000000	0.000000	-755.26	-1727.79
1	FID	ACIS-S-4	7.20	2487	-0.033	0.008	0.018	0.025	0.000000	0.000000	2157.77	180.16
2	FID	ACIS-S-5	7.23	2488	0.024	-0.008	0.012	0.019	0.000000	0.000000	-1807.39	174.40
3	GUIDE	40374032	8.92	4976	-0.253	0.037	0.077	0.123	206.615207	0.446144	2297.03	-1008.03
4	GUIDE	651045184	9.05	4975	0.192	0.129	0.073	0.119	206.266135	-0.772896	-2238.86	-1514.98
5	GUIDE	651041032	9.15	4972	0.053	0.211	0.087	0.144	206.579270	-0.458065	-763.14	-2126.08
6	GUIDE	40379536	9.24	4973	-0.126	0.056	0.075	0.121	206.530552	0.347967	1854.19	-860.96
7	GUIDE	651040064	9.24	4974	0.131	-0.427	0.088	0.142	205.482042	-0.129128	-1169.56	1976.57

2.4 Star Slots

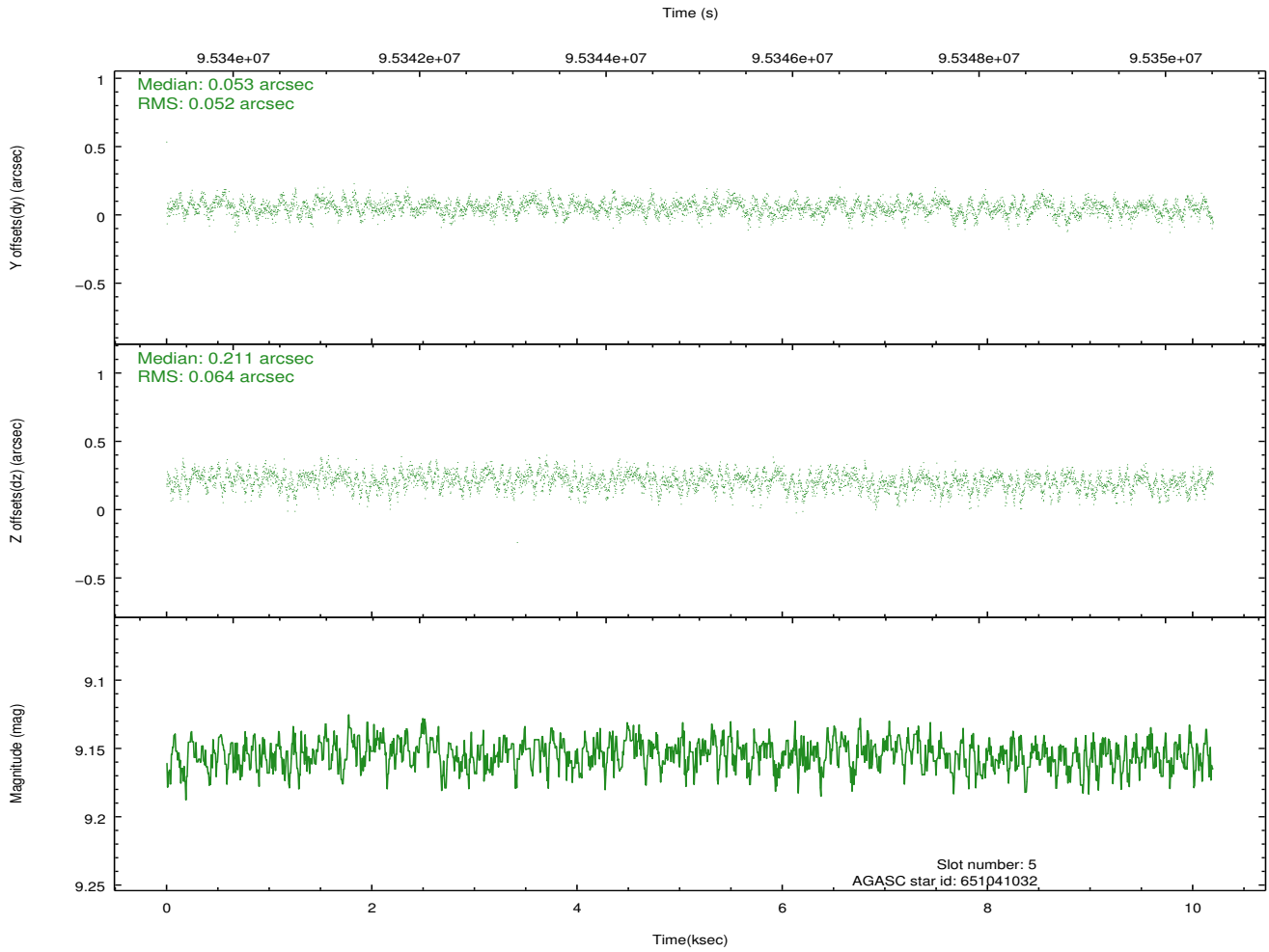
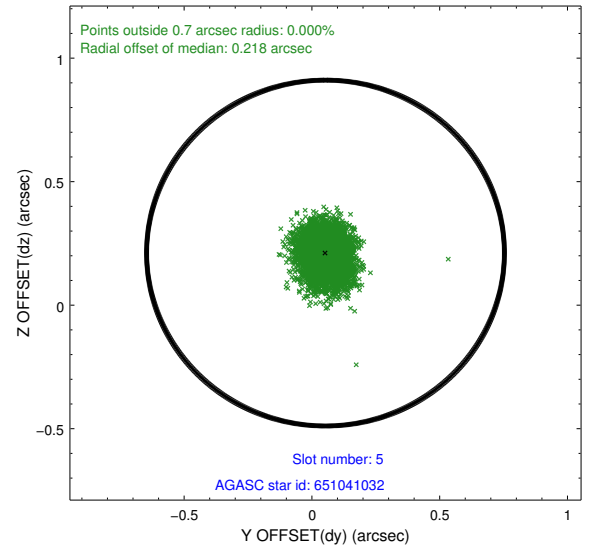
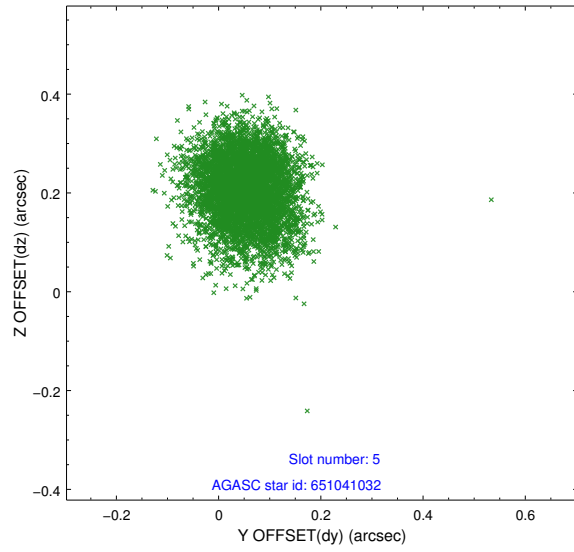
2.4.1 Slot 3



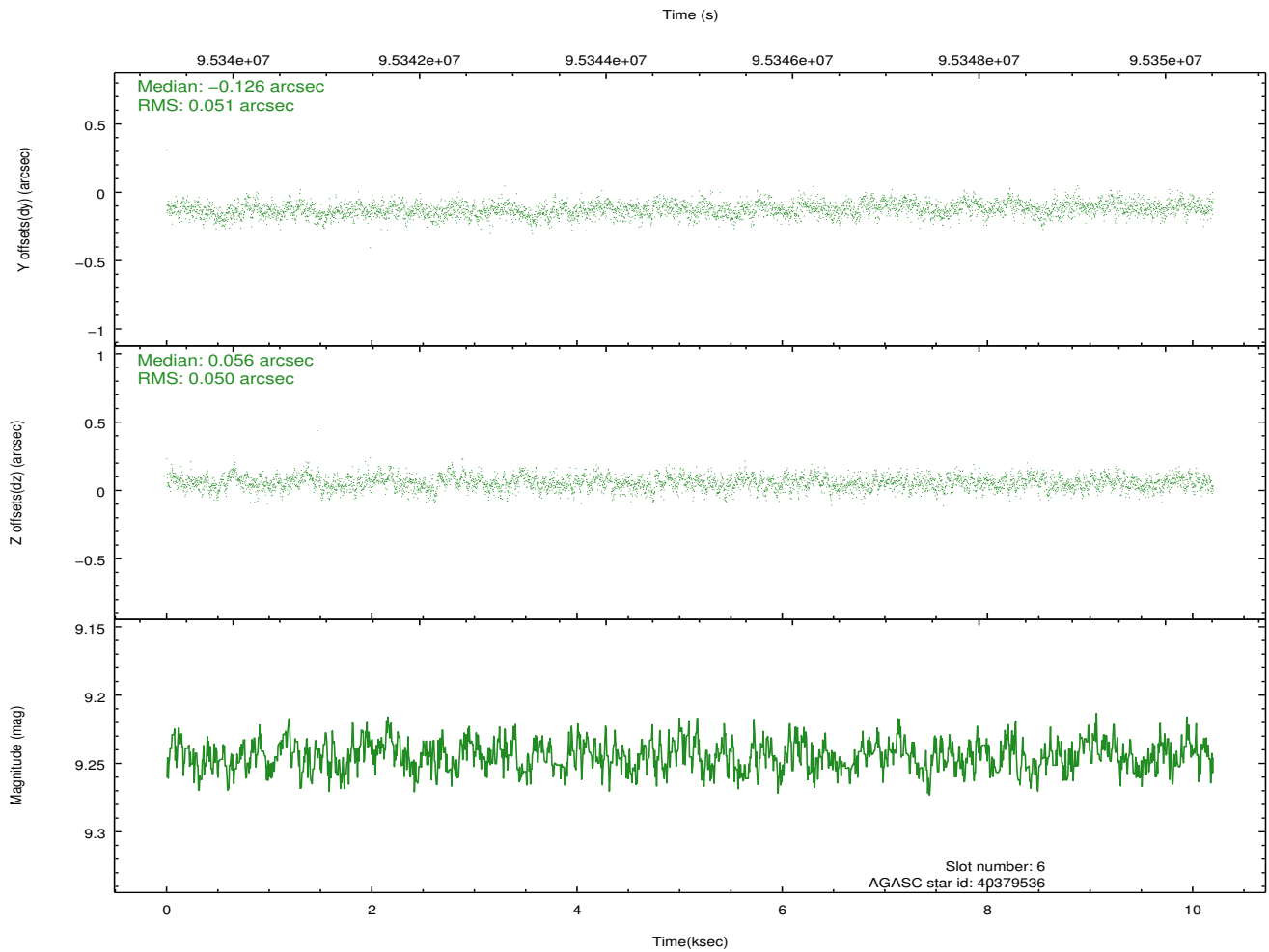
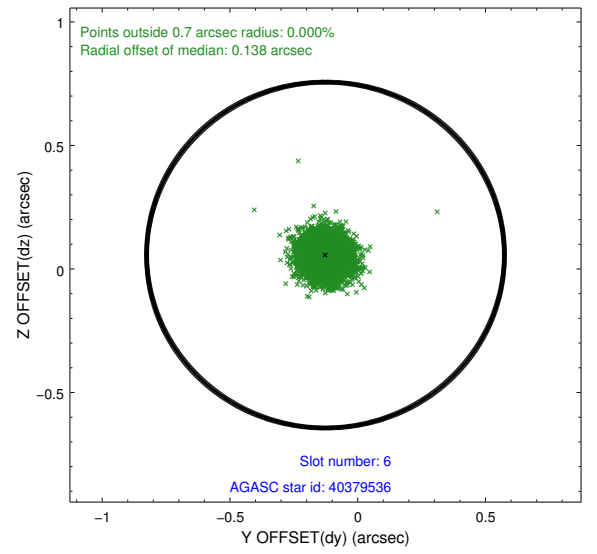
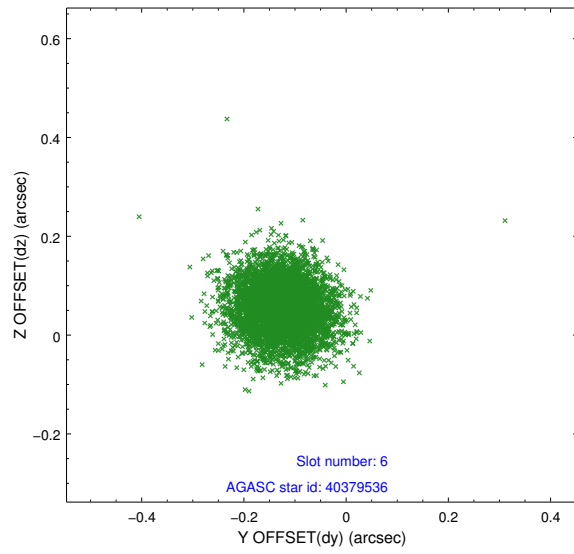
2.4.2 Slot 4



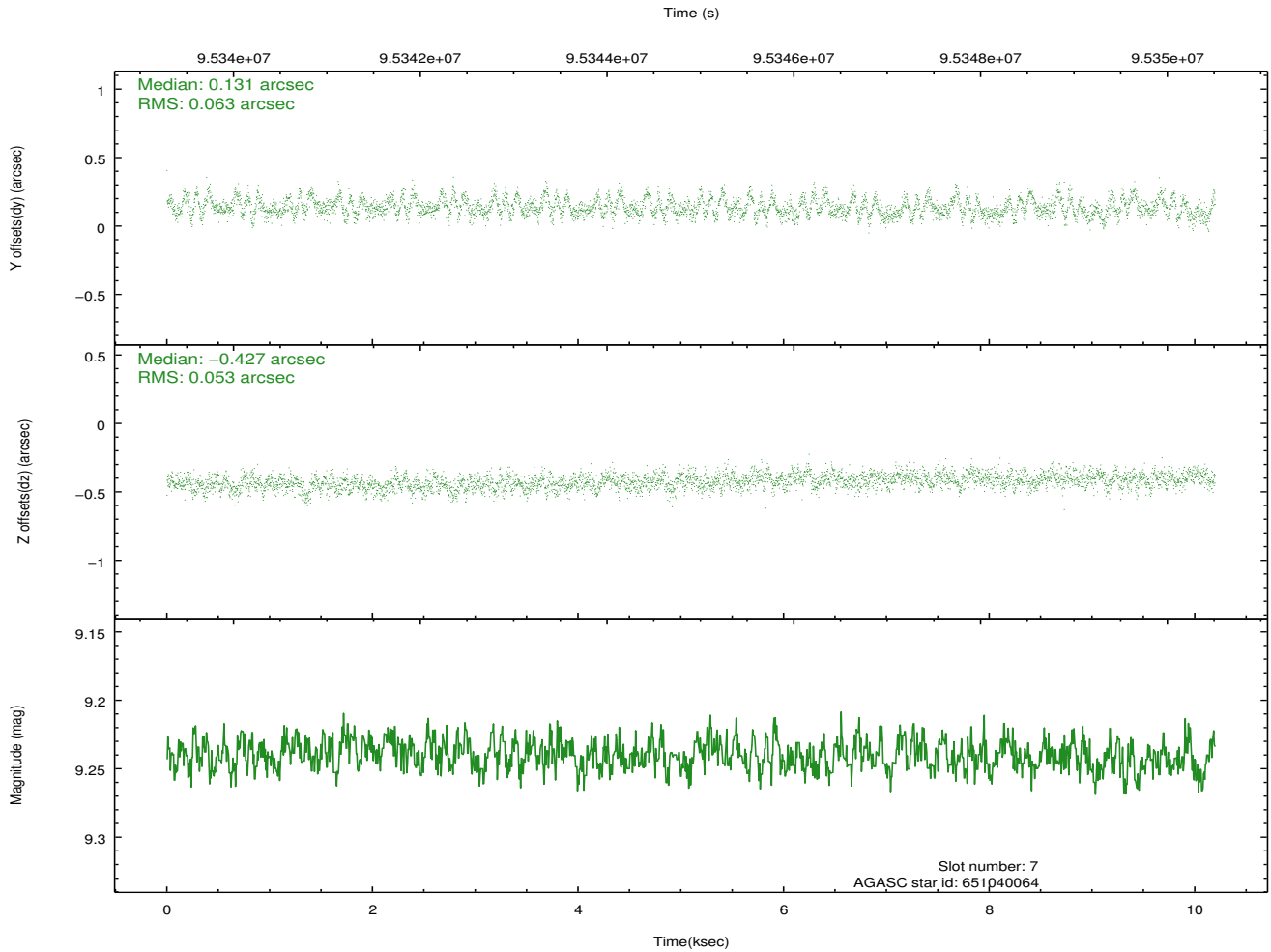
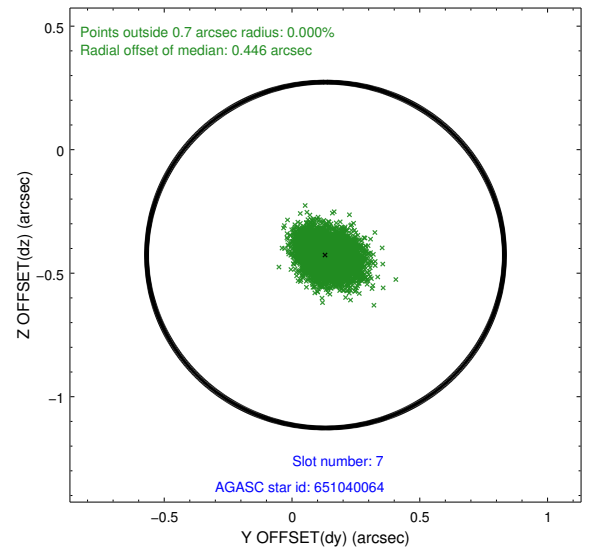
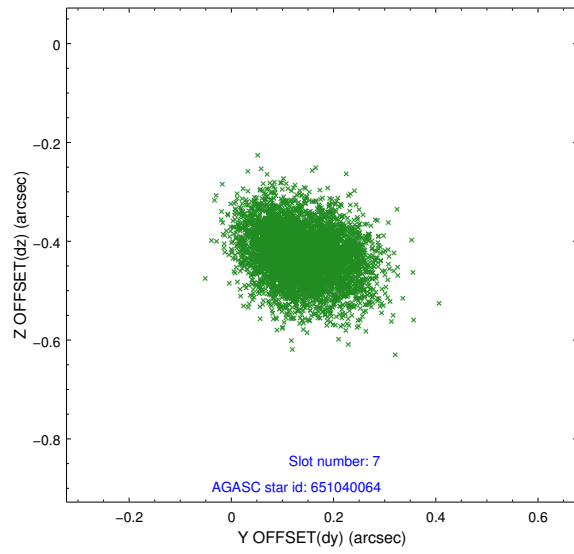
2.4.3 Slot 5



2.4.4 Slot 6

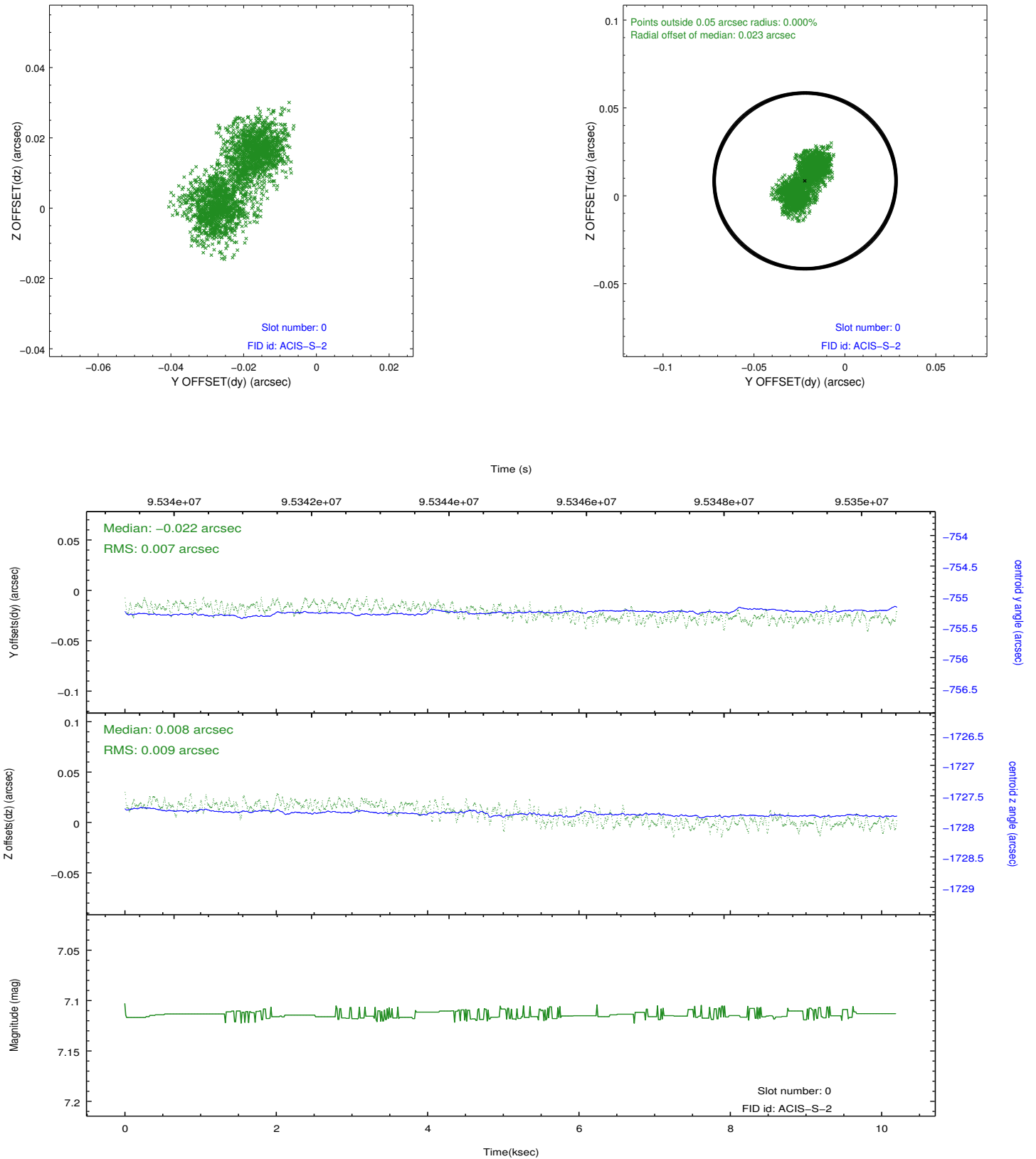


2.4.5 Slot 7

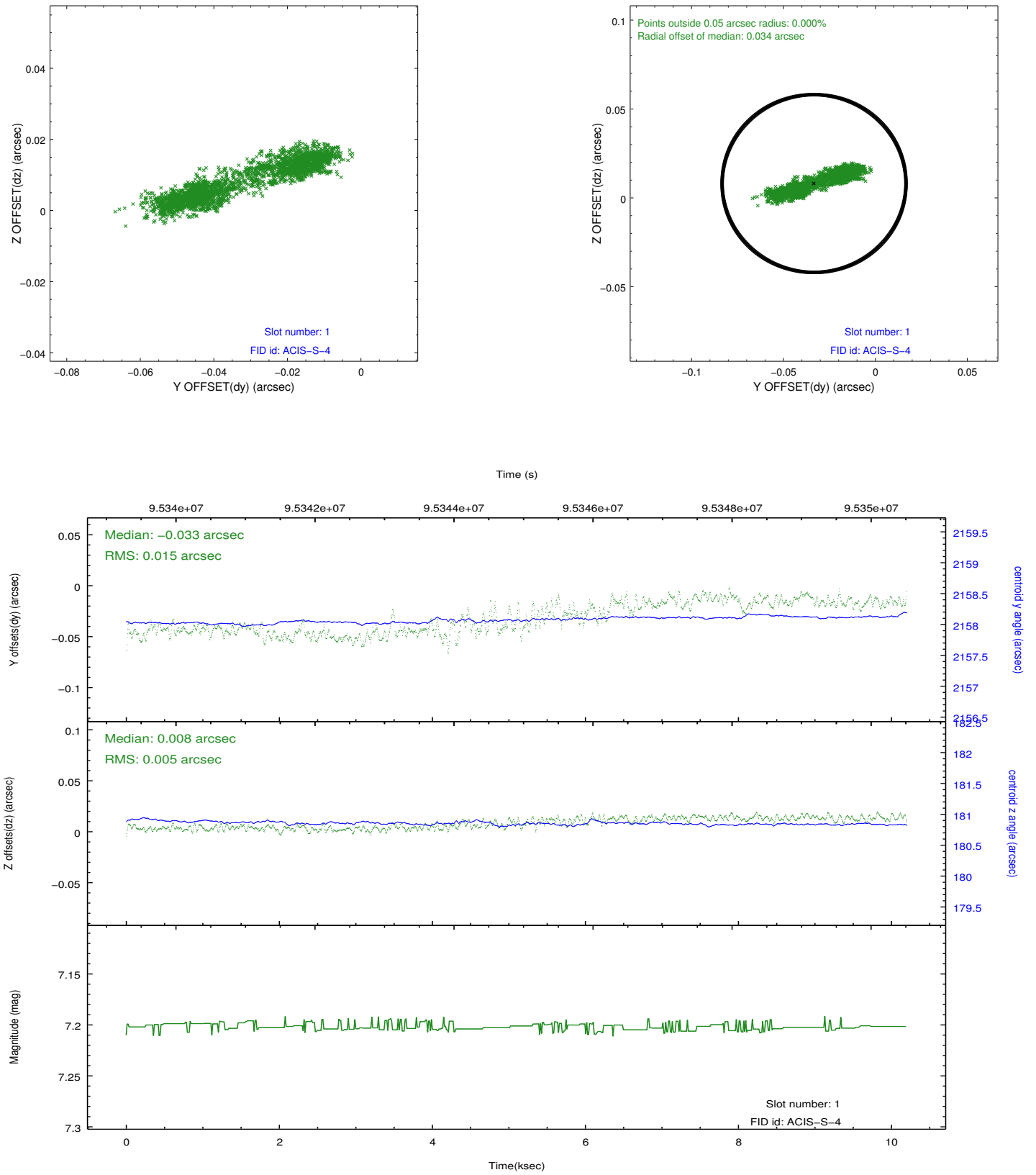


2.5 FID Slots

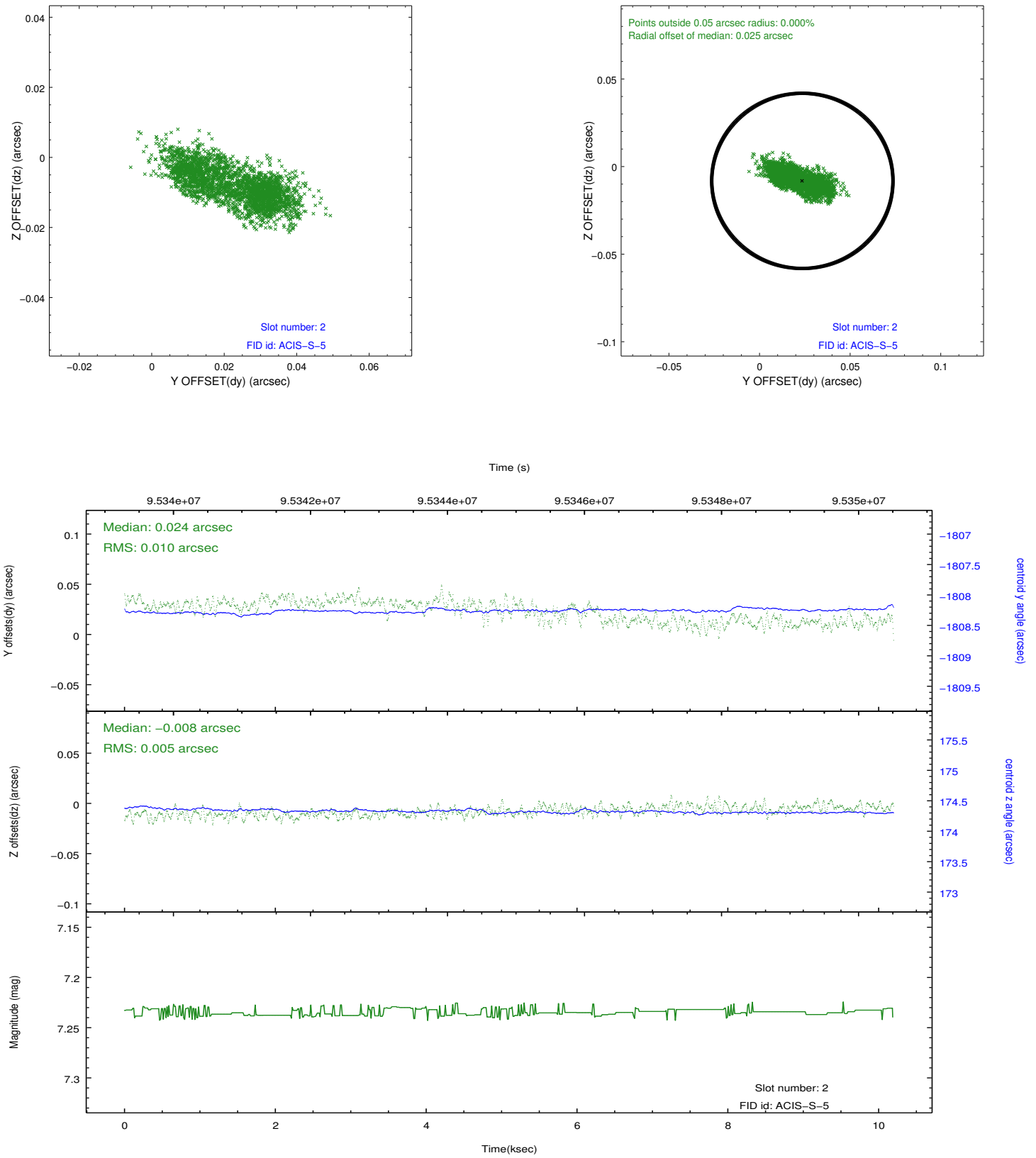
2.5.1 Slot 0



2.5.2 Slot 1



2.5.3 Slot 2



A Summary

A.1 Status

V&V Scientist	Jen Lauer
V&V Date (YYYY-MM-DD)	2012.09.14
V&V Edition	1
V&V Disposition and Status	OK
V&V Charge Time	9.76

A.2 Comments