

# V&V Reference Report

## L2 ASCDS Version : 8.4.5

Observation 2248 - L2 Version 3  
Chandra X-Ray Center

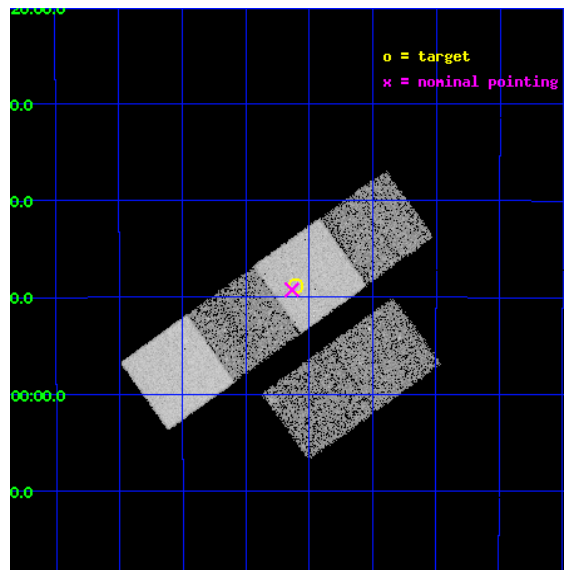
L2 Processing Date : Sep 3 2012

## Contents

<b>1</b>	<b>Front</b>	<b>2</b>
<b>2</b>	<b>OBI</b>	<b>3</b>
2.1	OBI . . . . .	3
2.1.1	Images . . . . .	3
2.1.2	Bias . . . . .	3
2.1.3	Parameters . . . . .	4
2.1.4	Events . . . . .	4
2.2	Compared Parameters . . . . .	5
2.3	Aspect . . . . .	6
2.4	Star Slots . . . . .	9
2.4.1	Slot 3 . . . . .	9
2.4.2	Slot 4 . . . . .	10
2.4.3	Slot 5 . . . . .	11
2.4.4	Slot 6 . . . . .	12
2.4.5	Slot 7 . . . . .	13
2.5	FID Slots . . . . .	14
2.5.1	Slot 0 . . . . .	14
2.5.2	Slot 1 . . . . .	15
2.5.3	Slot 2 . . . . .	16
<b>A</b>	<b>Summary</b>	<b>17</b>
A.1	Status . . . . .	17
A.2	Comments . . . . .	17

# 1 Front

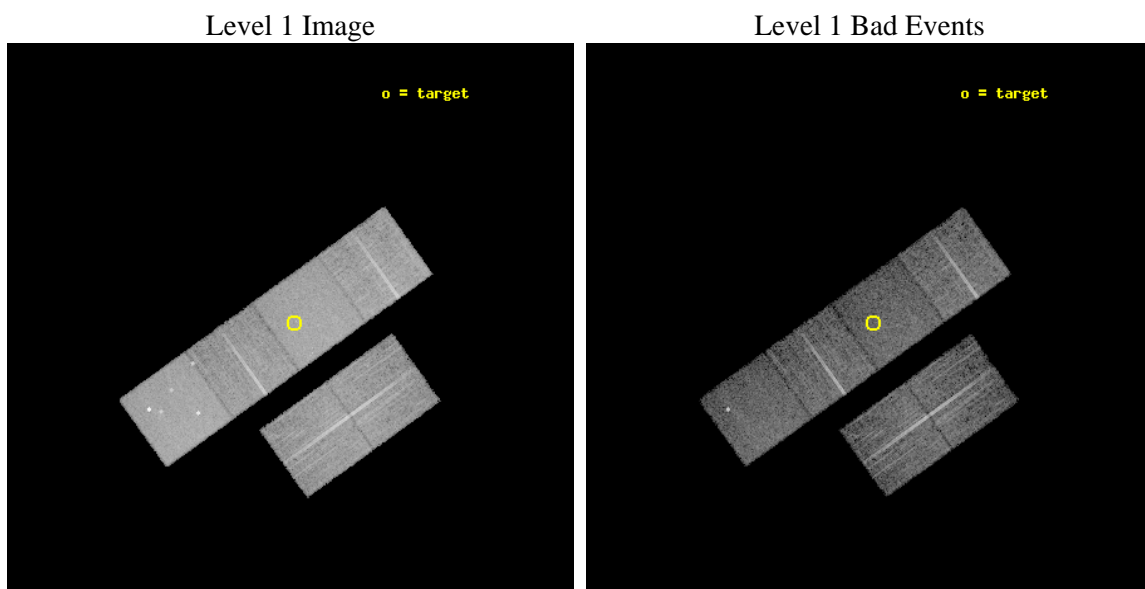
seq_num	900075	Sequence number
obs_id	2248	Observation id
title	THE NATURE OF NARROW-LINE, FIR-LUMINOUS, X-RAY GALAXIES	Proposal t
observer	PROFESSOR TOM SHANKS	Principal investigator
object	GSGP4X:114	Source name
dtcycle	0	&#160
cycle	P	events from which exps? Prim/Second/Both
ra_targ	14.651667	Observer's specified target RA [deg]
dec_targ	-27.813611	Observer's specified target Dec [deg]
ra_nom	14.659399792044	Nominal RA [deg]
dec_nom	-27.820709704831	Nominal Dec [deg]
roll_nom	324.2830366625	Nominal Roll [deg]
revision	3	Processing version of data
ontime	12136.270767689	Sum of GTIs [s]
livetime	11982.593999643	Livetime [s]
ontime2	12136.311807692	Sum of GTIs [s]
ontime3	12136.147647694	Sum of GTIs [s]
ontime5	12136.229727685	Sum of GTIs [s]
ontime6	12136.188687697	Sum of GTIs [s]
ontime7	12136.270767689	Sum of GTIs [s]
ontime8	12136.10660769	Sum of GTIs [s]
l2events	111785	Number of level 2 events



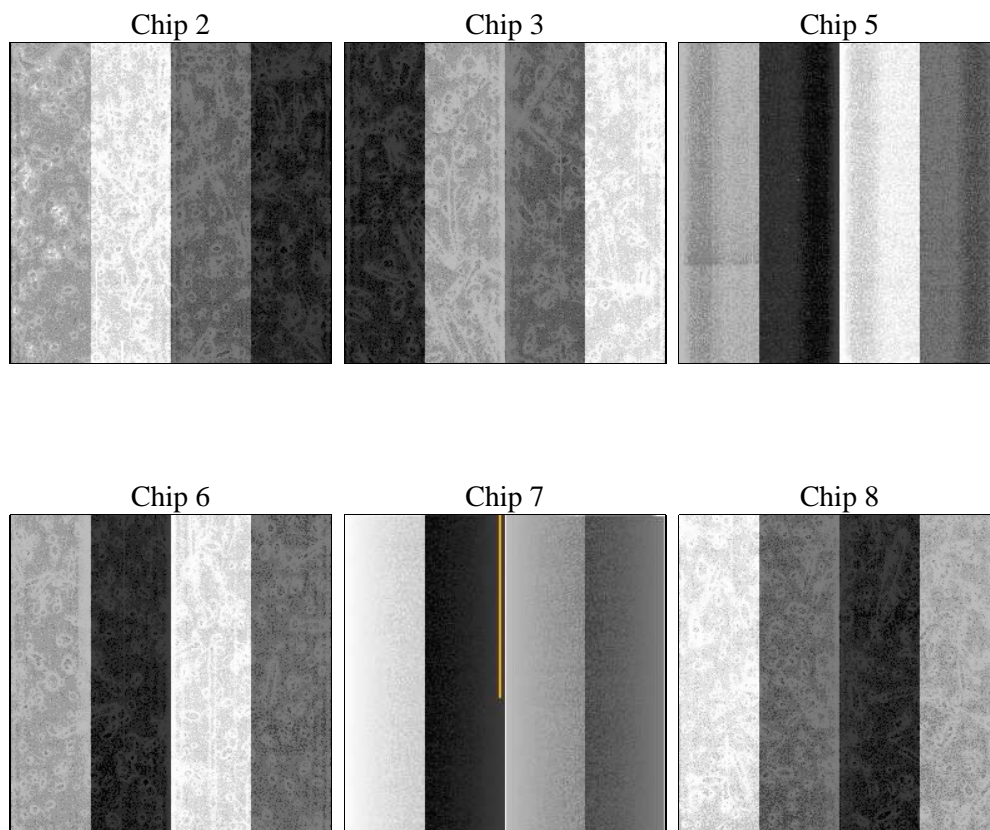
## 2 OBI

### 2.1 OBI

#### 2.1.1 Images



#### 2.1.2 Bias



### 2.1.3 Parameters

obi_num	0	Obi number	sched_exp_time	12217.915000	[s] Scheduled observation exposure time
ascdsver	8.4.5	Processing system revision	ontime	12136.270767689	Sum of GTIs [s]
caldbver	4.5.1.1	&#160	ontime2	12136.311807692	Sum of GTIs [s]
date	2012-09-03T03:17:53	Date and time of file creation	ontime3	12136.147647694	Sum of GTIs [s]
revision	3	Processing version of data	ontime5	12136.229727685	Sum of GTIs [s]
			ontime6	12136.188687697	Sum of GTIs [s]
			ontime7	12136.270767689	Sum of GTIs [s]
			ontime8	12136.10660769	Sum of GTIs [s]
			l1events	494982	Number of level 1 events

### 2.1.4 Events

	ccd 2	ccd 3	ccd 5	ccd 6	ccd 7	ccd 8		ccd 2	ccd 3	ccd 5	ccd 6	ccd 7	ccd 8
level 1 events	73568	68938	102026	70949	90414	89087	grade 0 events	3913	3888	7236	4168	4890	6034
rejected events	65100	60450	53321	61904	51399	71240		5%	5%	7%	5%	5%	6%
rejected %	88%	87%	52%	87%	56%	79%	grade 1 events	30	35	138	36	68	41
								0%	0%	0%	0%	0%	0%
							grade 2 events	1690	1615	14664	1661	7694	3728
								2%	2%	14%	2%	8%	4%
							grade 3 events	755	765	2027	811	3592	1794
								1%	1%	1%	1%	3%	2%
							grade 4 events	721	782	1936	790	3554	1736
								0%	1%	1%	1%	3%	1%
							grade 5 events	2337	2501	7606	2831	8316	3526
								3%	3%	7%	3%	9%	3%
							grade 6 events	1390	1438	22852	1620	19300	4558
								1%	2%	22%	2%	21%	5%
							grade 7 events	62732	57914	45567	59032	43000	67670
								85%	84%	44%	83%	47%	75%

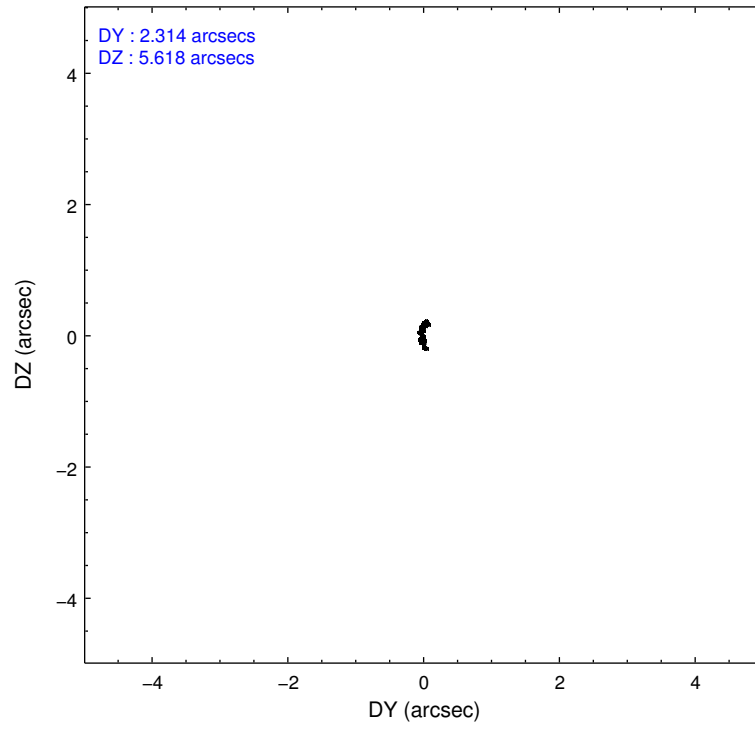
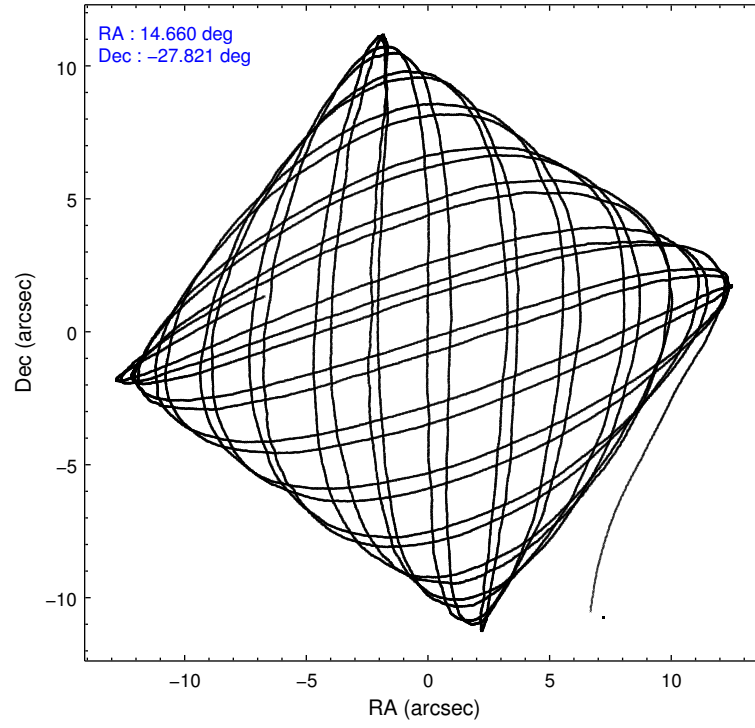


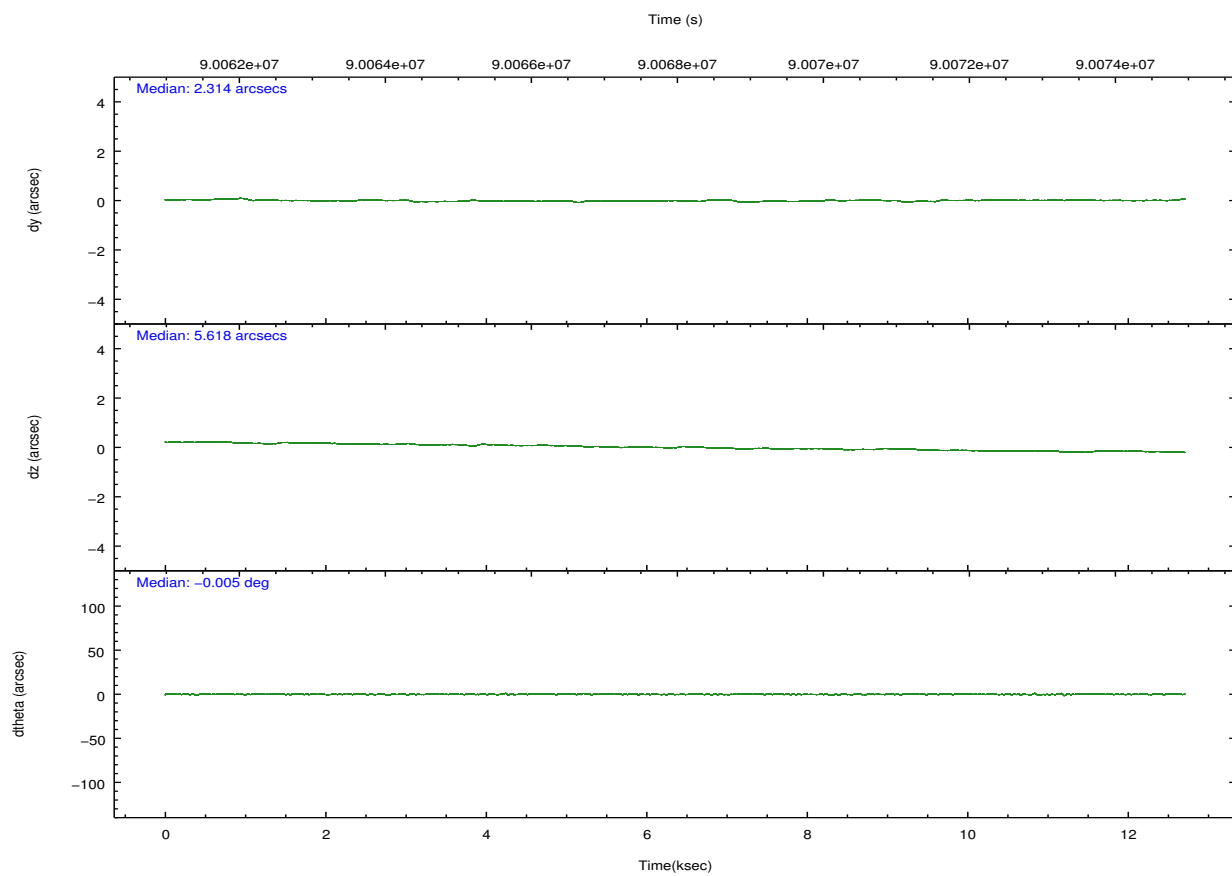
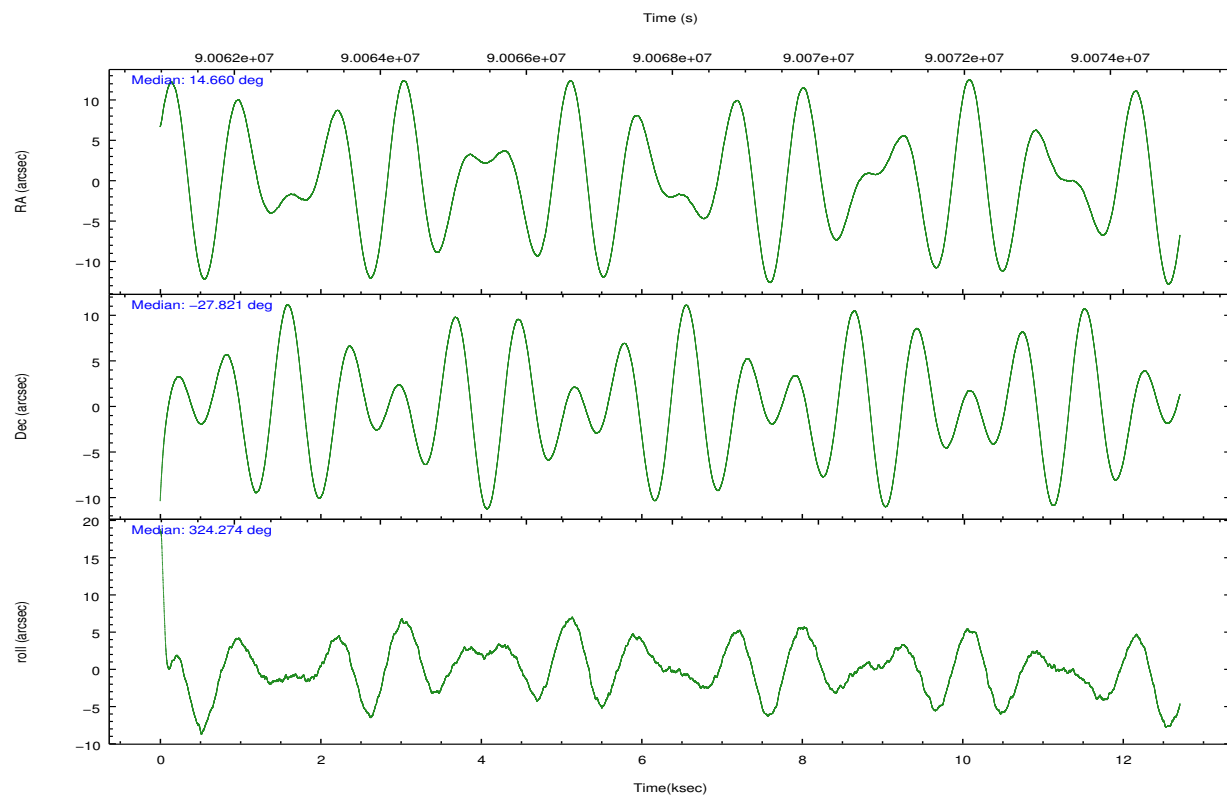
## 2.2 Compared Parameters

Parameter	Planned	Actual
Instrument	ACIS	ACIS
Detector	ACIS-235678	ACIS-235678
Grating	NONE	NONE
Data mode	FAINT	FAINT
Observation mode	POINTING	POINTING
[deg] Pointing RA	14.628619	14.6593997920438
[deg] Pointing Dec	-27.818192	-27.82070970483127
[deg] Pointing Roll	324.112019	324.2830366625031
[mm] SIM focus pos	-0.684267	-0.6828225247311905
[mm] SIM defocus	0	0.001444936568705701
[mm] SIM translation stage pos	-190.132523	-190.1400660498719
[mm] SIM translation stage offset	0	0.00754346686406393
[s] Observation start time (MET)	90062105.184000	90060994.13680001
Observation start date	2000-11-08T09:14:01	2000-11-08T08:56:34
[s] Observation end time (MET)	90074323.184000	90074977.18732899
Observation end date	2000-11-08T12:37:39	2000-11-08T12:49:37
Read mode	TIMED	TIMED

Parameter	Planned	Actual
Obspar format version number	7	7
Obspar file type	PREDICTED	ACTUAL
Obspar update status	NONE	UPDATED
Number of optional ACIS chips dropped	0	0
On-chip summing requested	N	N
Subarray requested	NONE	NONE
Alternating exposures requested	N	N
[s] Primary exposure time	0.000000	3.2

## 2.3 Aspect



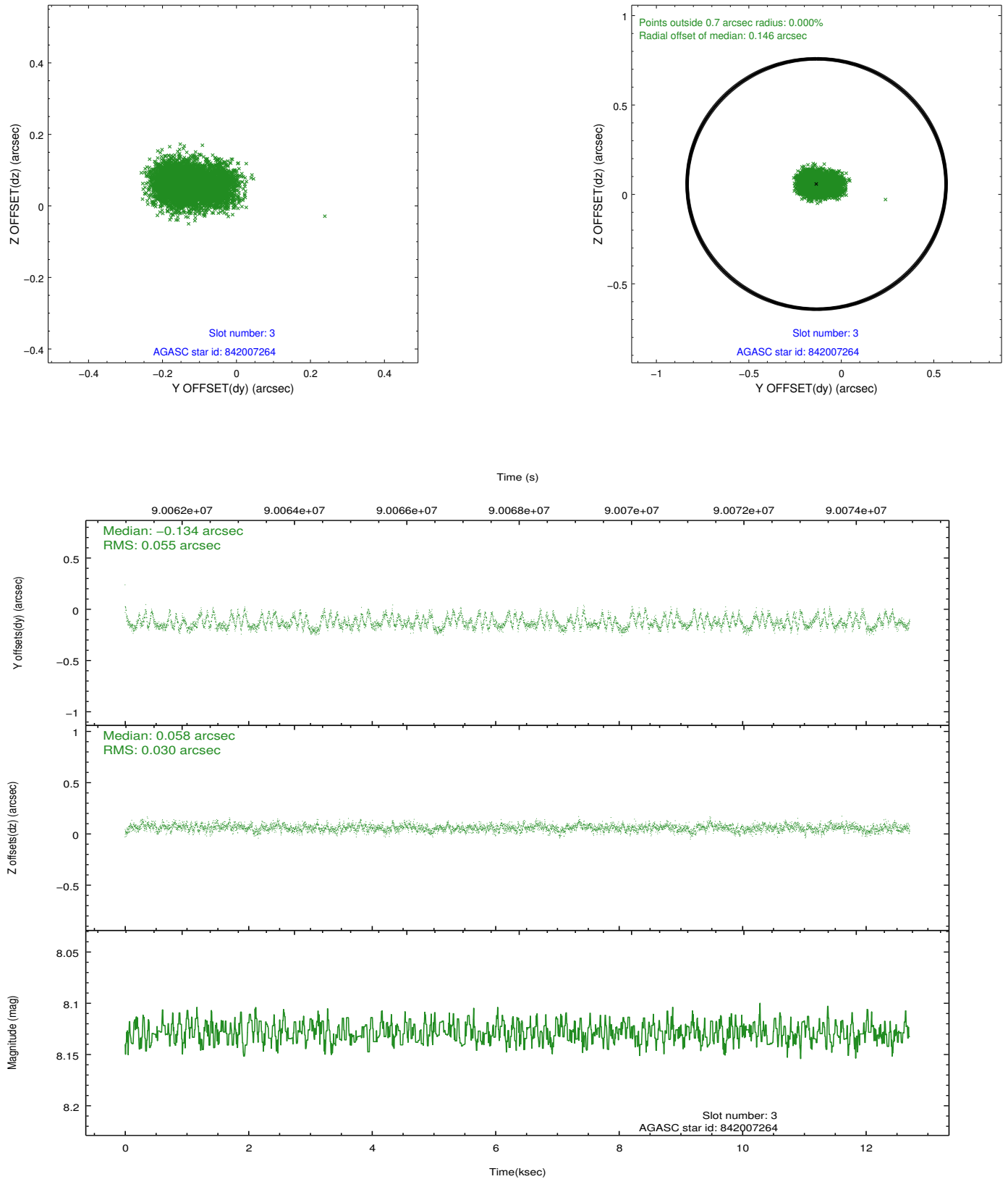


### Slot Statistics

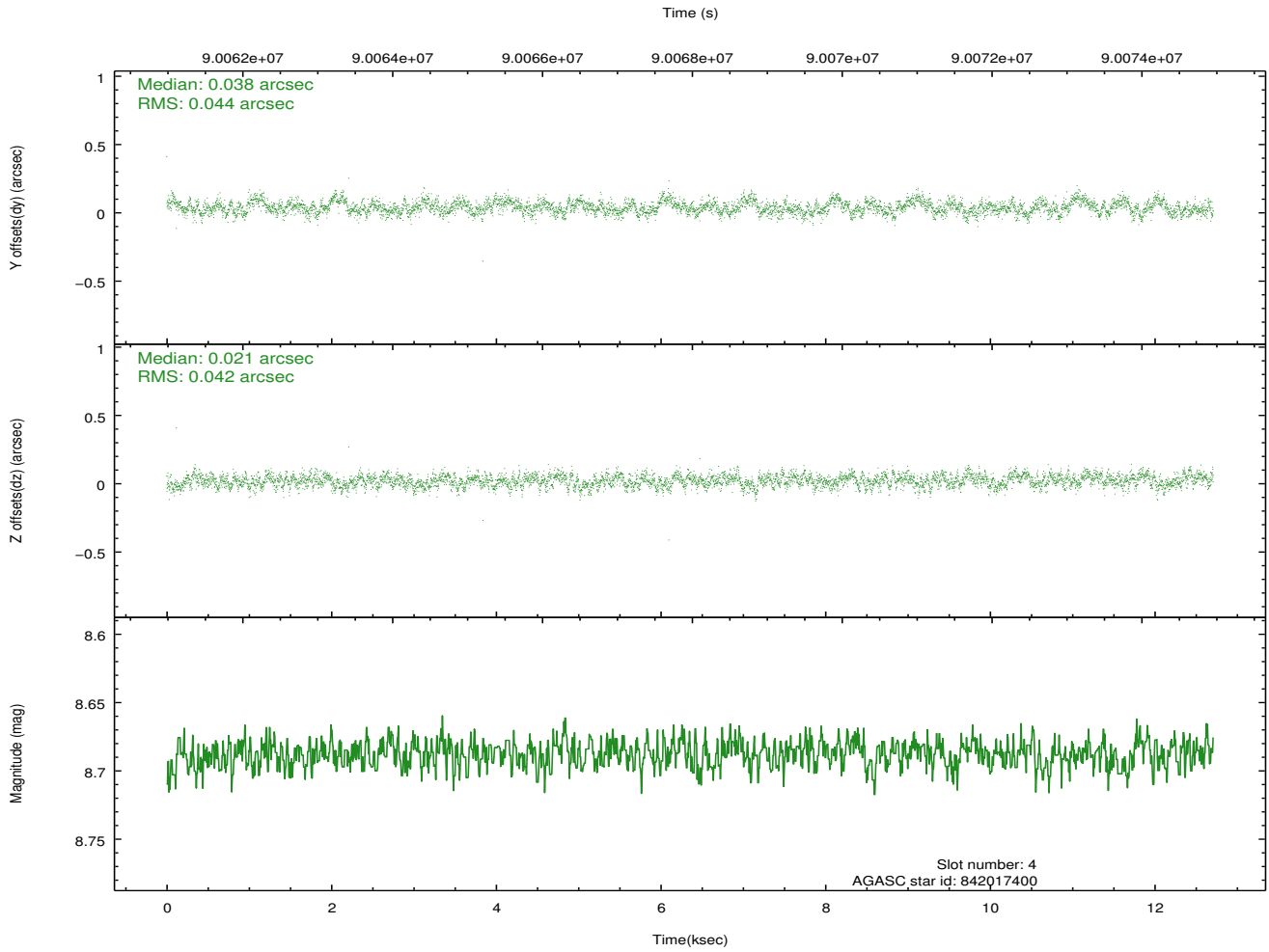
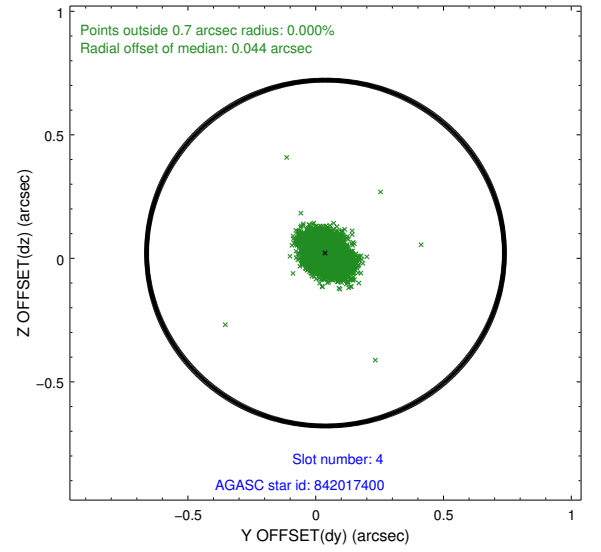
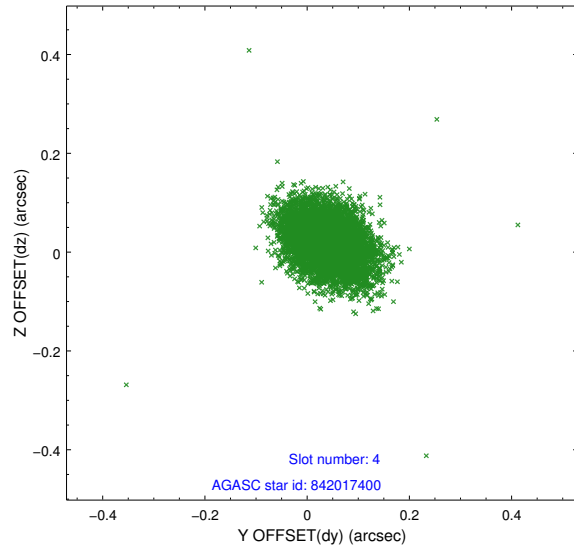
slot	status	id	mag	n_pts	med_dy	med_dz	dr1	dr2	ra	dec	mean_y	mean_z
0	FID	ACIS-S-2	7.11	3100	-0.047	-0.004	0.006	0.010	0.000000	0.000000	-754.94	-1726.77
1	FID	ACIS-S-4	7.20	3100	0.001	0.024	0.005	0.010	0.000000	0.000000	2158.17	181.40
2	FID	ACIS-S-5	7.24	3101	0.015	-0.011	0.006	0.011	0.000000	0.000000	-1807.27	175.39
3	GUIDE	842007264	8.13	6201	-0.134	0.058	0.066	0.110	14.570692	-27.092422	-1683.44	2007.71
4	GUIDE	842017400	8.69	6201	0.038	0.021	0.063	0.104	14.466062	-28.061705	94.70	-1012.90
5	GUIDE	842015088	9.30	6196	-0.086	0.023	0.076	0.120	13.933025	-27.893682	-1630.86	-1523.14
6	GUIDE	842008736	10.40	6136	0.121	-0.006	0.126	0.204	14.870220	-27.799337	582.90	505.22
7	GUIDE	842007696	9.69	6195	0.055	-0.097	0.092	0.151	14.456243	-28.218698	401.85	-1488.98

## 2.4 Star Slots

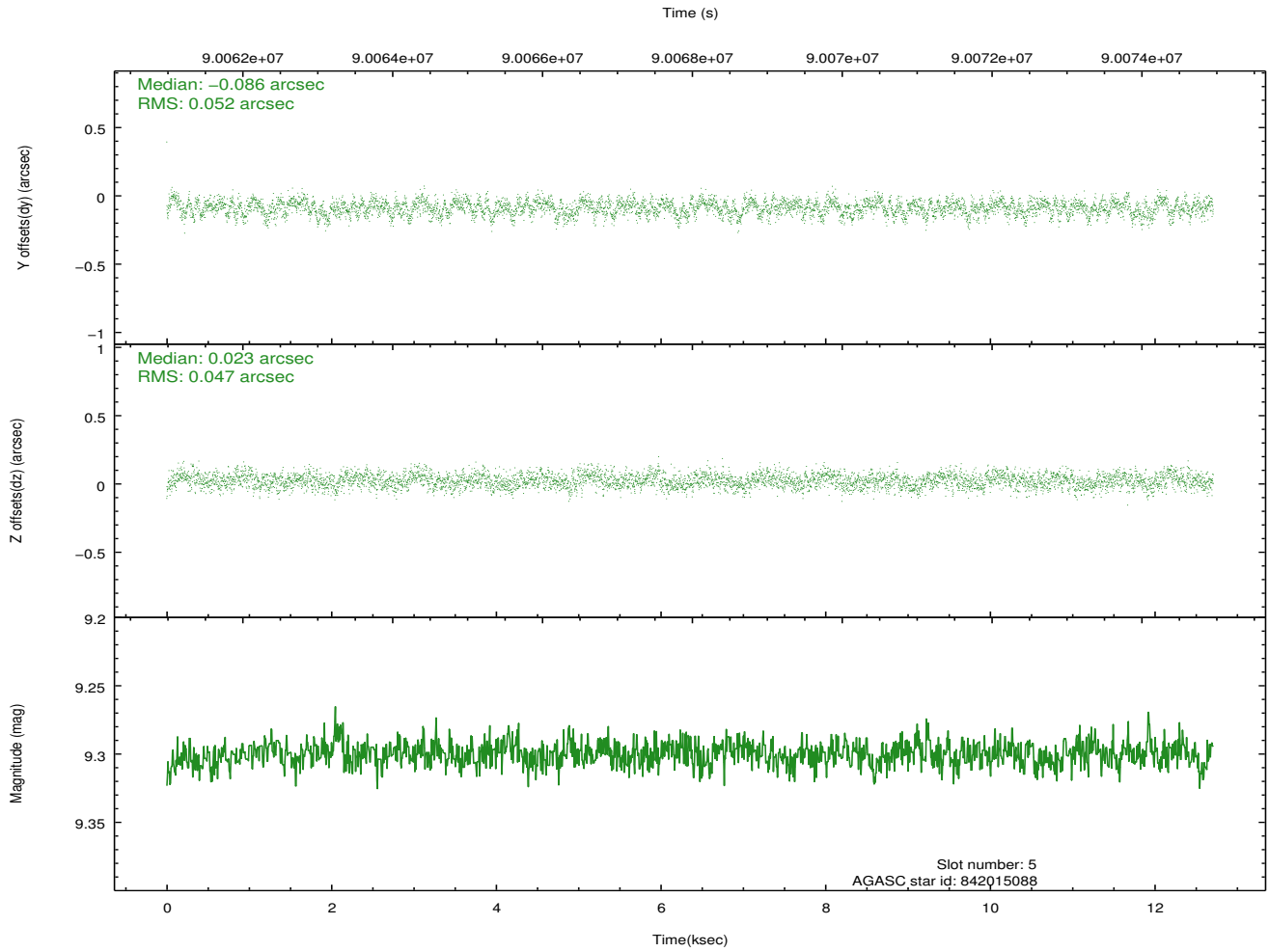
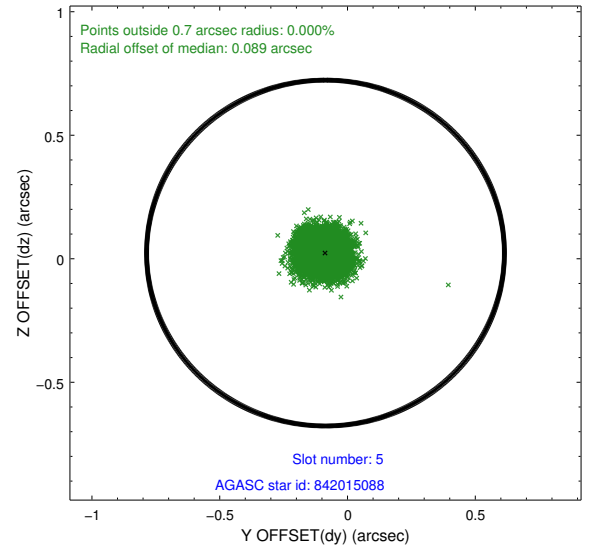
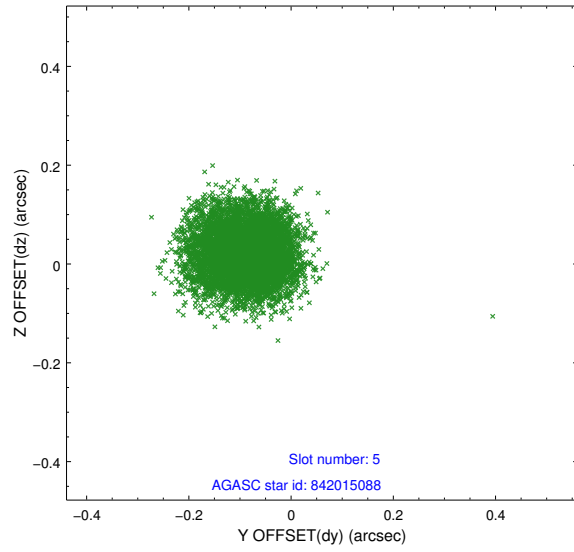
### 2.4.1 Slot 3



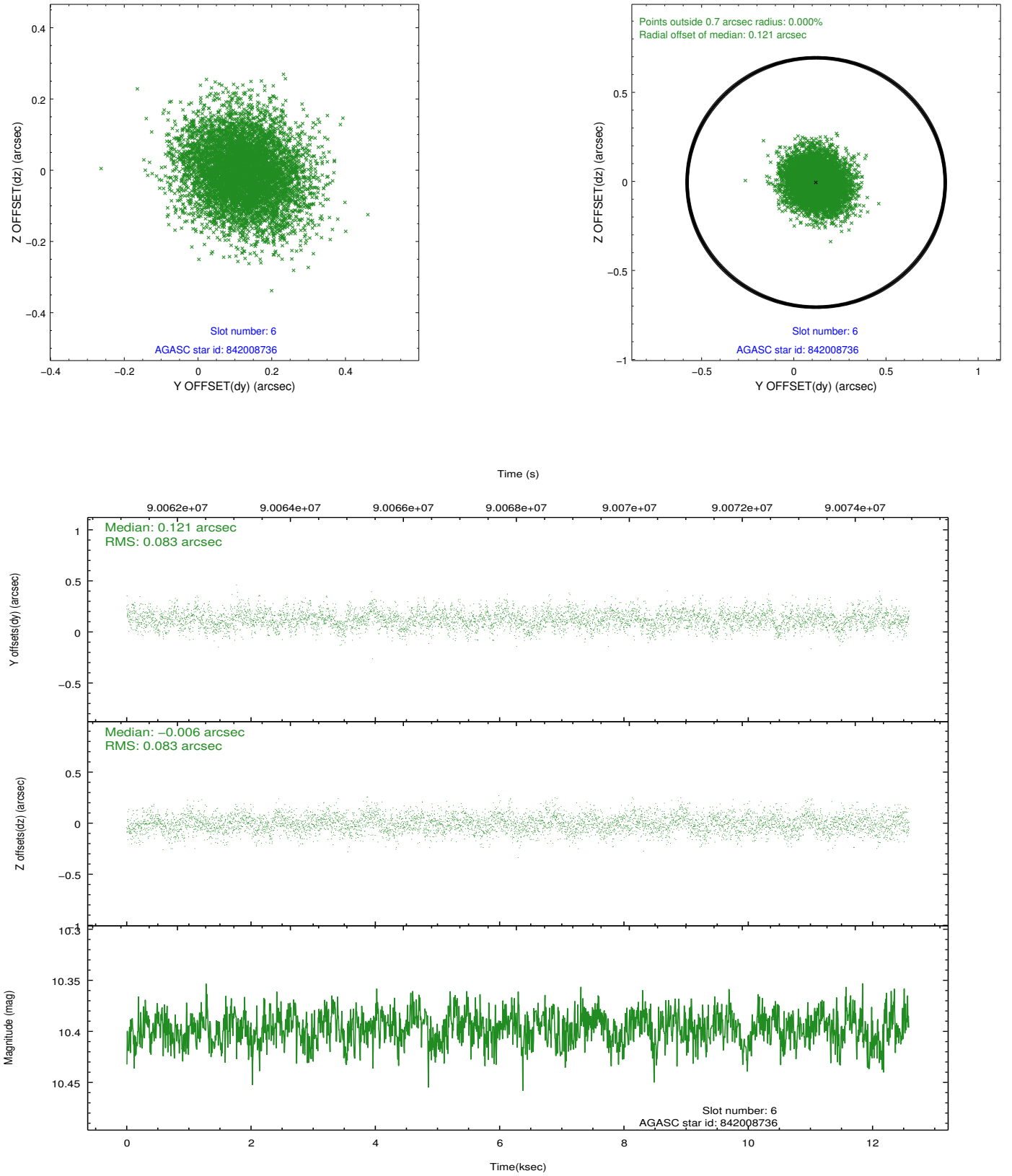
## 2.4.2 Slot 4



### 2.4.3 Slot 5

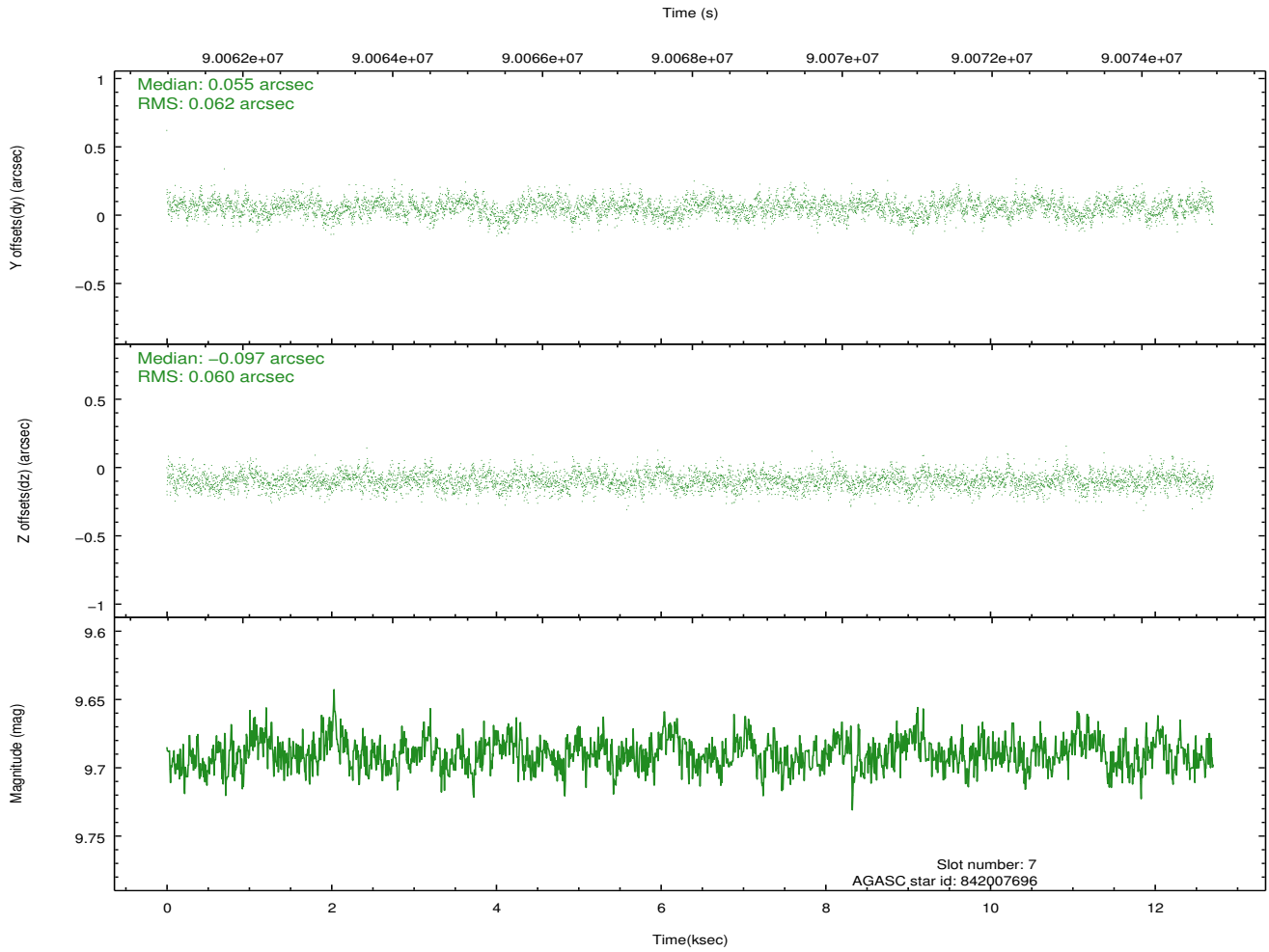
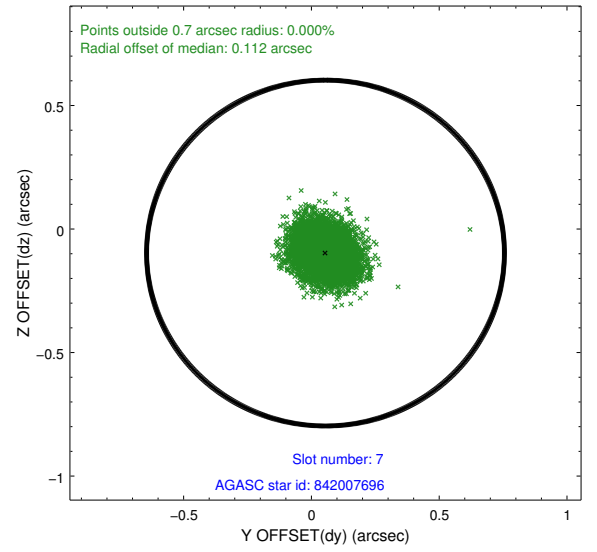
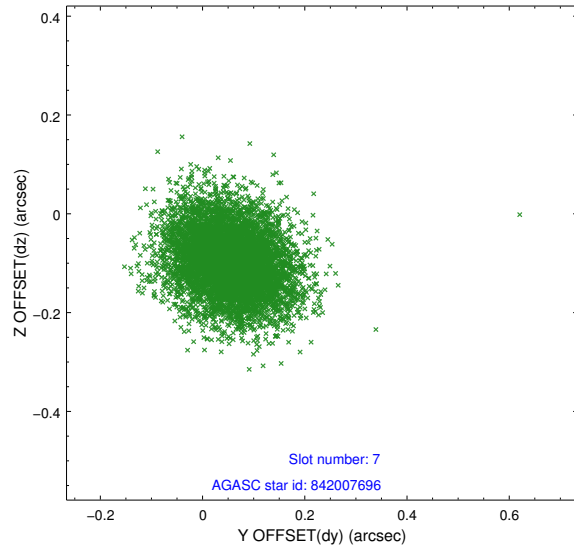


## 2.4.4 Slot 6



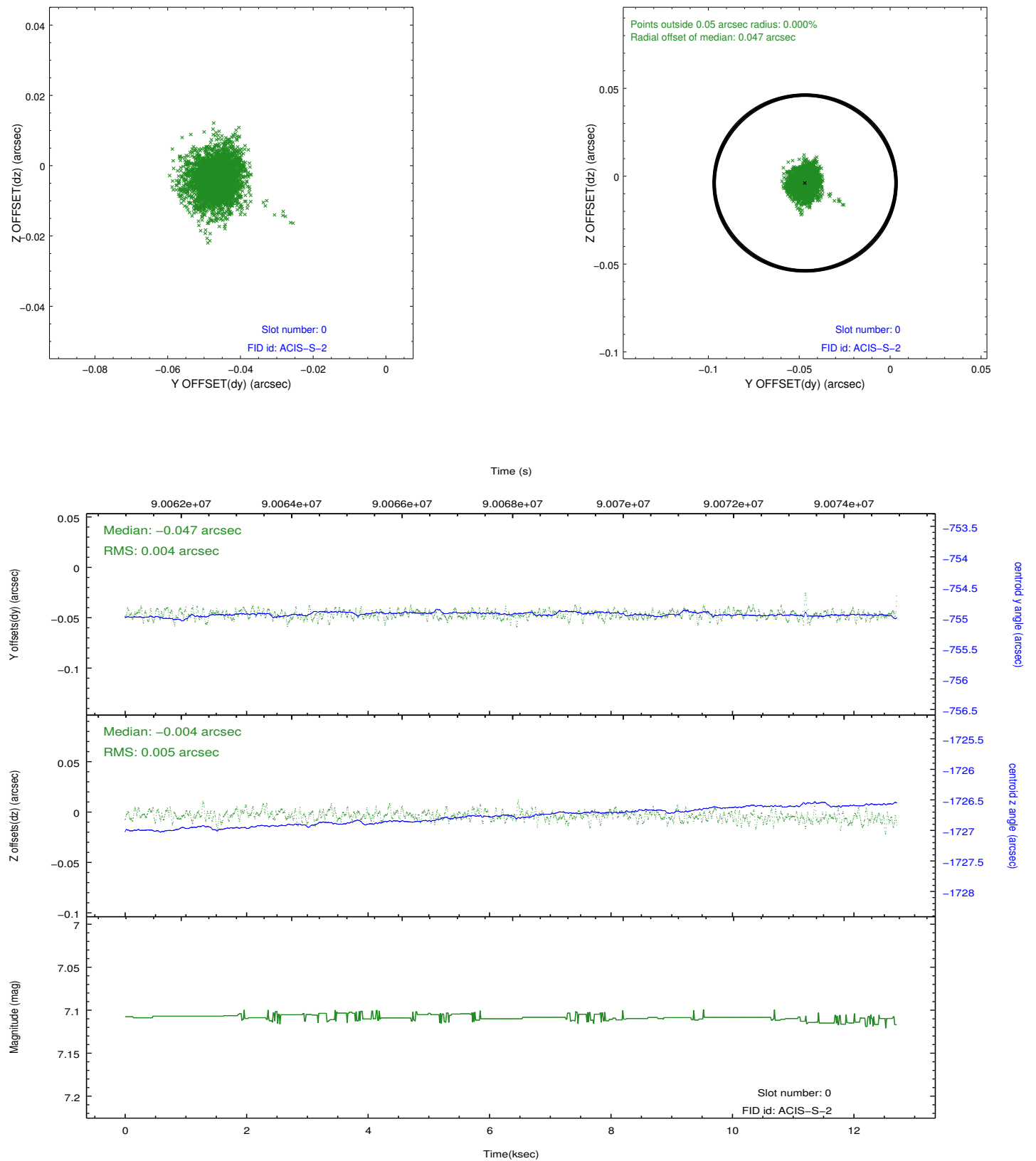


## 2.4.5 Slot 7

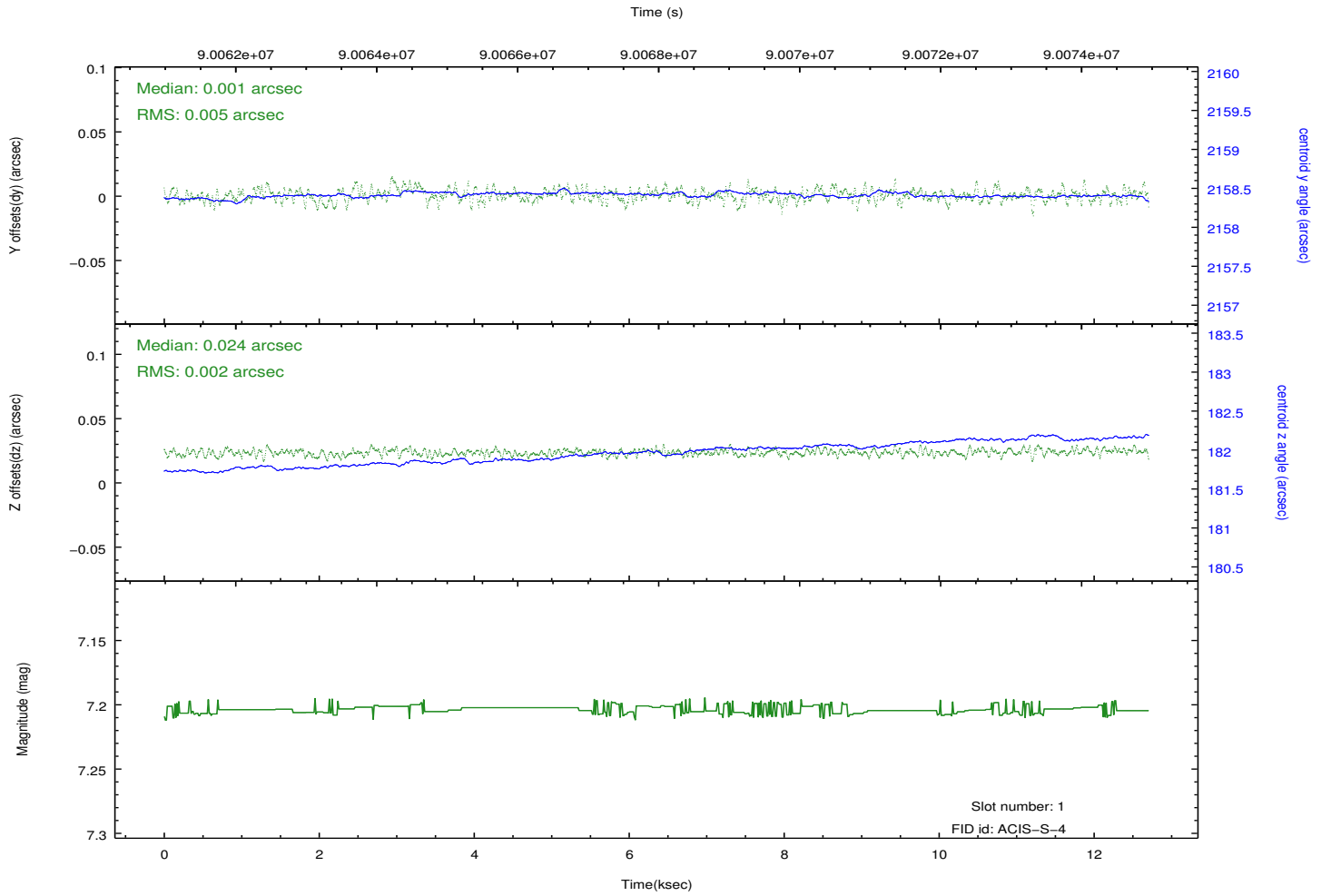
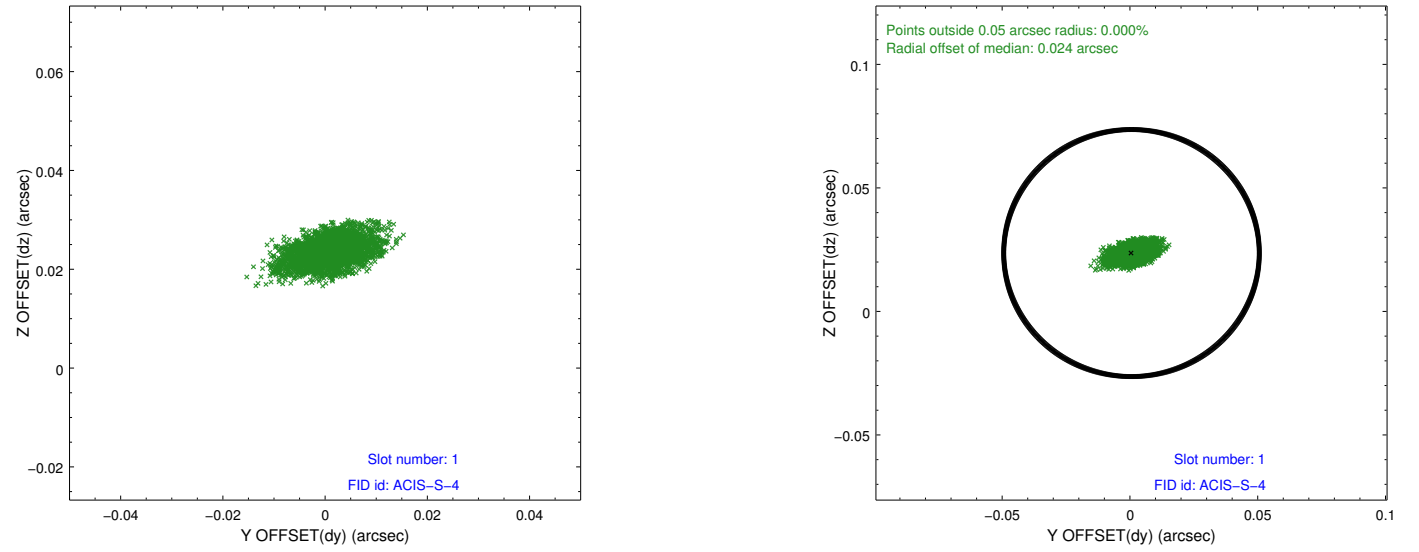


## 2.5 FID Slots

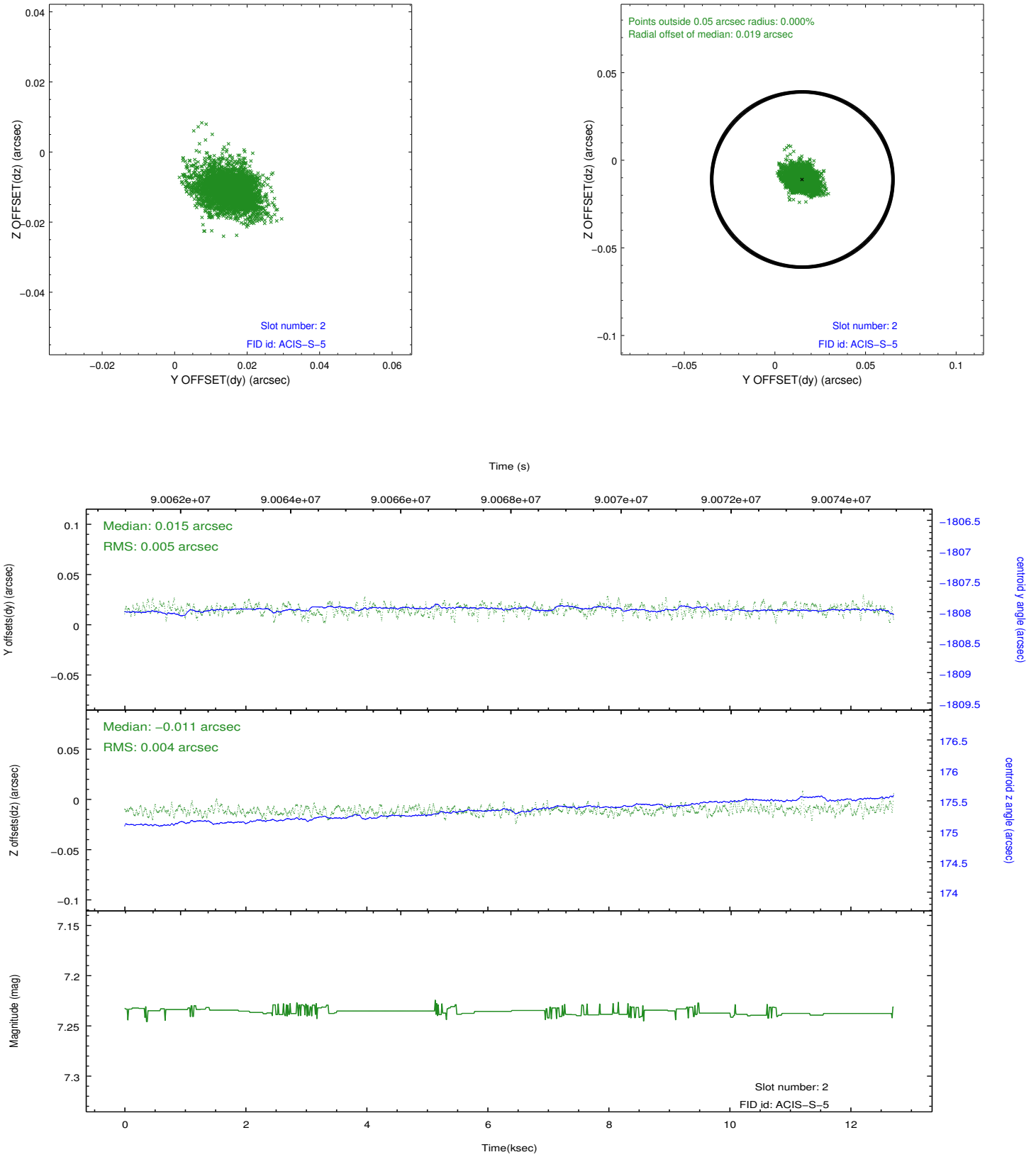
### 2.5.1 Slot 0



## 2.5.2 Slot 1



### 2.5.3 Slot 2



## A Summary

### A.1 Status

V&V Scientist	Beth Sundheim
V&V Date (YYYY-MM-DD)	2013.01.03
V&V Edition	1
V&V Disposition and Status	OK
V&V Charge Time	12.137

### A.2 Comments