

V&V Reference Report

L2 ASCDS Version : 8.4.5

Observation 2242 - L2 Version 3
Chandra X-Ray Center

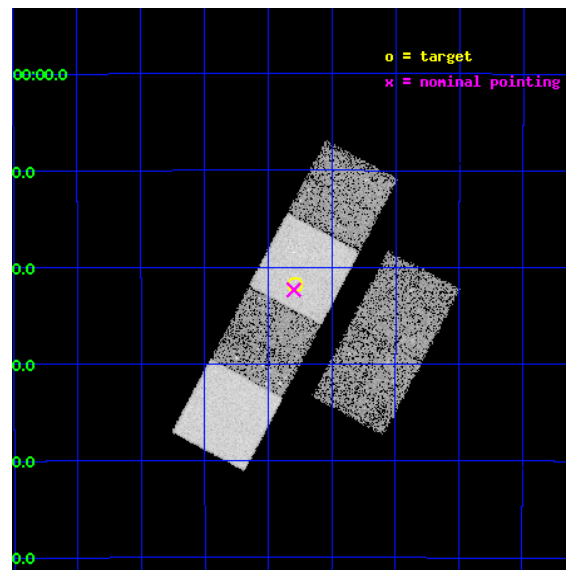
L2 Processing Date : Sep 5 2012

Contents

1	Front	2
2	OBI	3
2.1	OBI	3
2.1.1	Images	3
2.1.2	Bias	3
2.1.3	Parameters	4
2.1.4	Events	4
2.2	Compared Parameters	5
2.3	Aspect	6
2.4	Star Slots	9
2.4.1	Slot 3	9
2.4.2	Slot 4	10
2.4.3	Slot 5	11
2.4.4	Slot 6	12
2.4.5	Slot 7	13
2.5	FID Slots	14
2.5.1	Slot 0	14
2.5.2	Slot 1	15
2.5.3	Slot 2	16
A	Summary	17
A.1	Status	17
A.2	Comments	17

1 Front

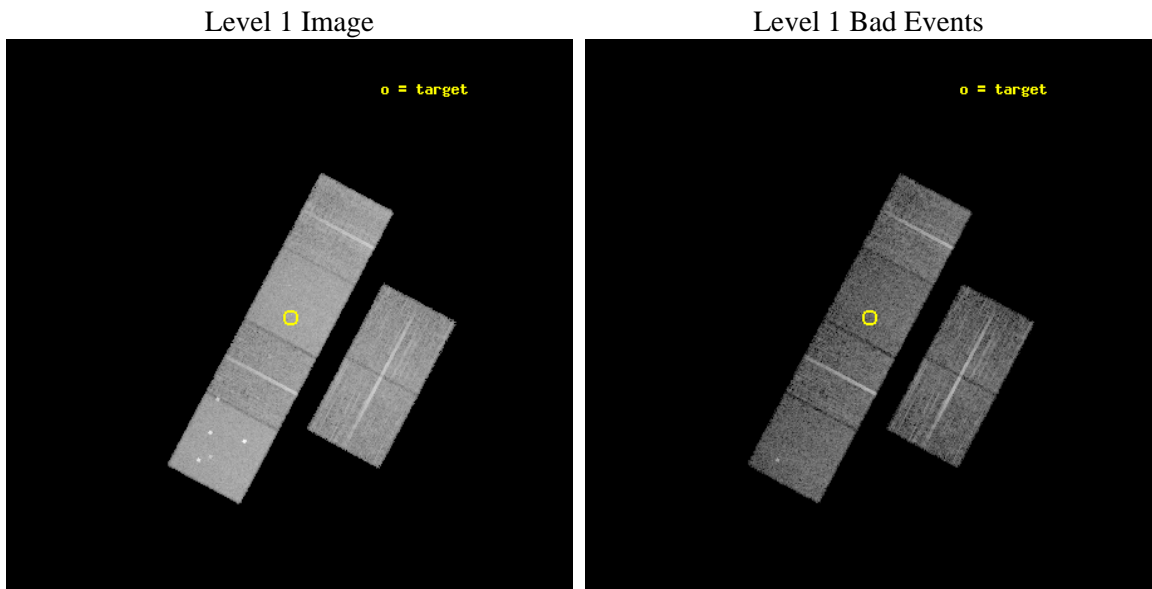
seq_num	900069	Sequence number
obs_id	2242	Observation id
title	THE NATURE OF NARROW-LINE, FIR-LUMINOUS, X-RAY GALAXIES	Proposal t
observer	PROFESSOR TOM SHANKS	Principal investigator
object	GSGP4X:048	Source name
dtcycle	0	
cycle	P	events from which exps? Prim/Second/Both
ra_targ	14.32125	Observer's specified target RA [deg]
dec_targ	-27.363056	Observer's specified target Dec [deg]
ra_nom	14.324633041718	Nominal RA [deg]
dec_nom	-27.372402969766	Nominal Dec [deg]
roll_nom	298.04570630849	Nominal Roll [deg]
revision	3	Processing version of data
ontime	11843.200011015	Sum of GTIs [s]
livetime	11693.234281357	Livetime [s]
ontime2	11843.200011015	Sum of GTIs [s]
ontime3	11843.200011015	Sum of GTIs [s]
ontime5	11843.200011015	Sum of GTIs [s]
ontime6	11843.200011015	Sum of GTIs [s]
ontime7	11843.200011015	Sum of GTIs [s]
ontime8	11843.200011015	Sum of GTIs [s]
l2events	121658	Number of level 2 events



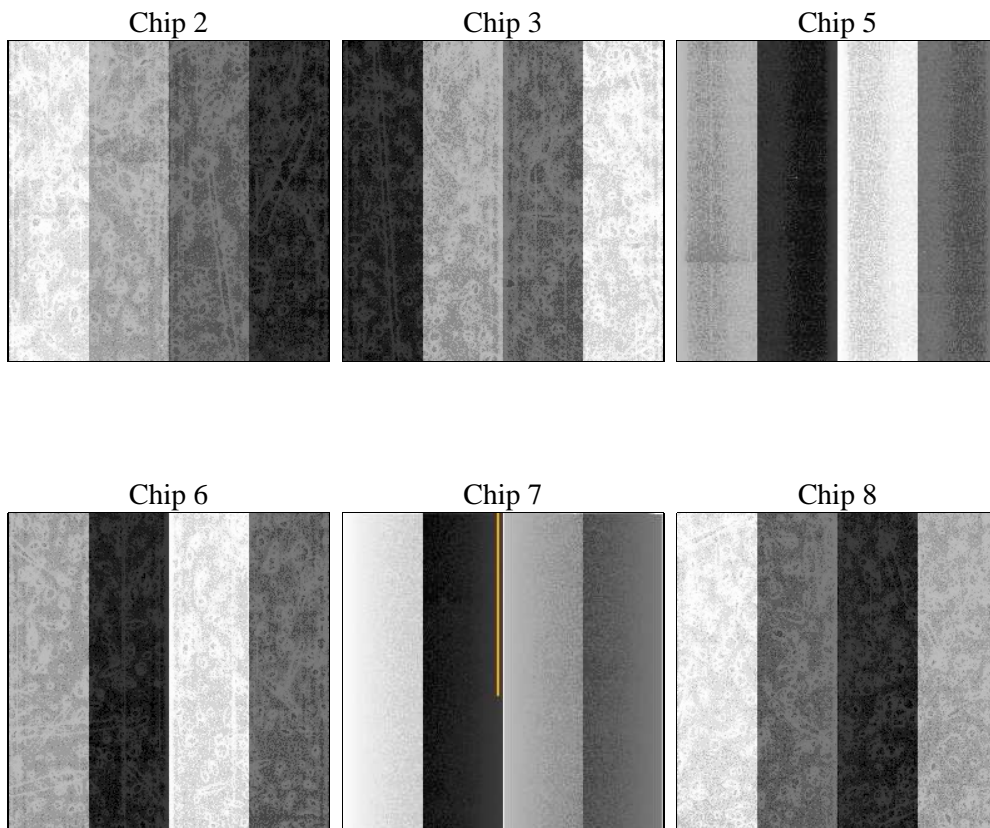
2 OBI

2.1 OBI

2.1.1 Images



2.1.2 Bias



2.1.3 Parameters

obi_num	0	Obi number	sched_exp_time	11700.000000	[s] Scheduled observation exposure time
ascdsver	8.4.5	Processing system revision	ontime	11843.200011015	Sum of GTIs [s]
caldsver	4.5.1.1	 	ontime2	11843.200011015	Sum of GTIs [s]
date	2012-09-05T01:43:11	Date and time of file creation	ontime3	11843.200011015	Sum of GTIs [s]
revision	3	Processing version of data	ontime5	11843.200011015	Sum of GTIs [s]
			ontime6	11843.200011015	Sum of GTIs [s]
			ontime7	11843.200011015	Sum of GTIs [s]
			ontime8	11843.200011015	Sum of GTIs [s]
			l1events	516006	Number of level 1 events

2.1.4 Events

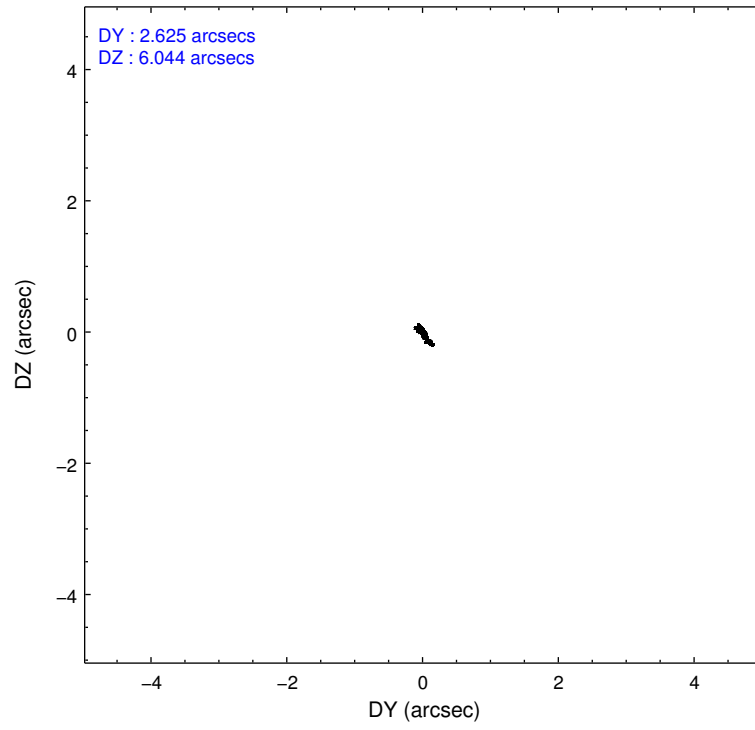
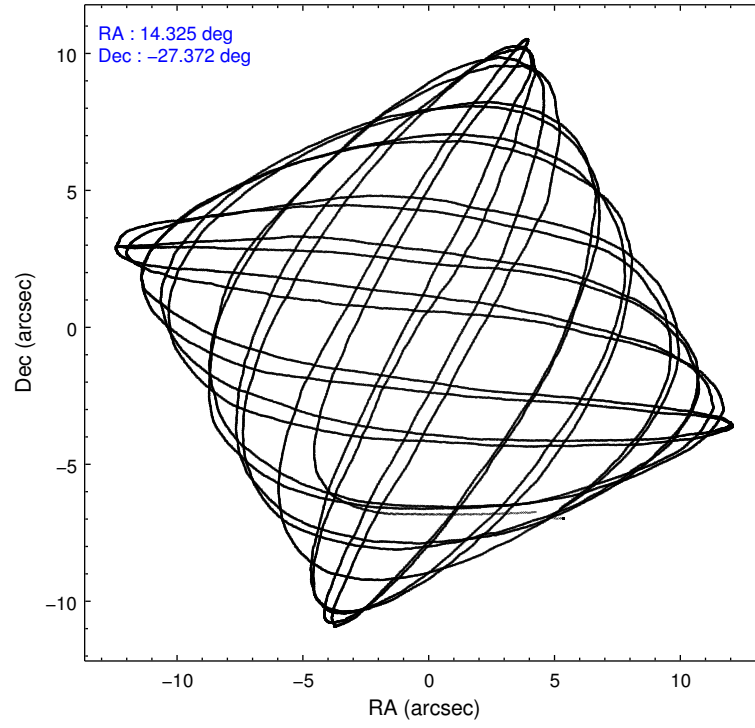
	ccd 2	ccd 3	ccd 5	ccd 6	ccd 7	ccd 8		ccd 2	ccd 3	ccd 5	ccd 6	ccd 7	ccd 8
level 1 events	73051	69414	112391	71986	99534	89630	grade 0 events	3681	3457	10901	4105	4707	5843
rejected events	64809	61574	56124	62917	55038	71703		5%	4%	9%	5%	4%	6%
rejected %	88%	88%	49%	87%	55%	79%	grade 1 events	36	31	102	37	100	41
								0%	0%	0%	0%	0%	0%
							grade 2 events	1695	1516	15729	1725	8831	3902
								2%	2%	13%	2%	8%	4%
							grade 3 events	787	769	2469	822	4030	1935
								1%	1%	2%	1%	4%	2%
							grade 4 events	775	789	2265	846	4062	1710
								1%	1%	2%	1%	4%	1%
							grade 5 events	2460	2759	7639	3044	8513	3752
								3%	3%	6%	4%	8%	4%
							grade 6 events	1404	1397	26327	1711	24291	4729
								1%	2%	23%	2%	24%	5%
							grade 7 events	62213	58696	46959	59696	45000	67718
								85%	84%	41%	82%	45%	75%

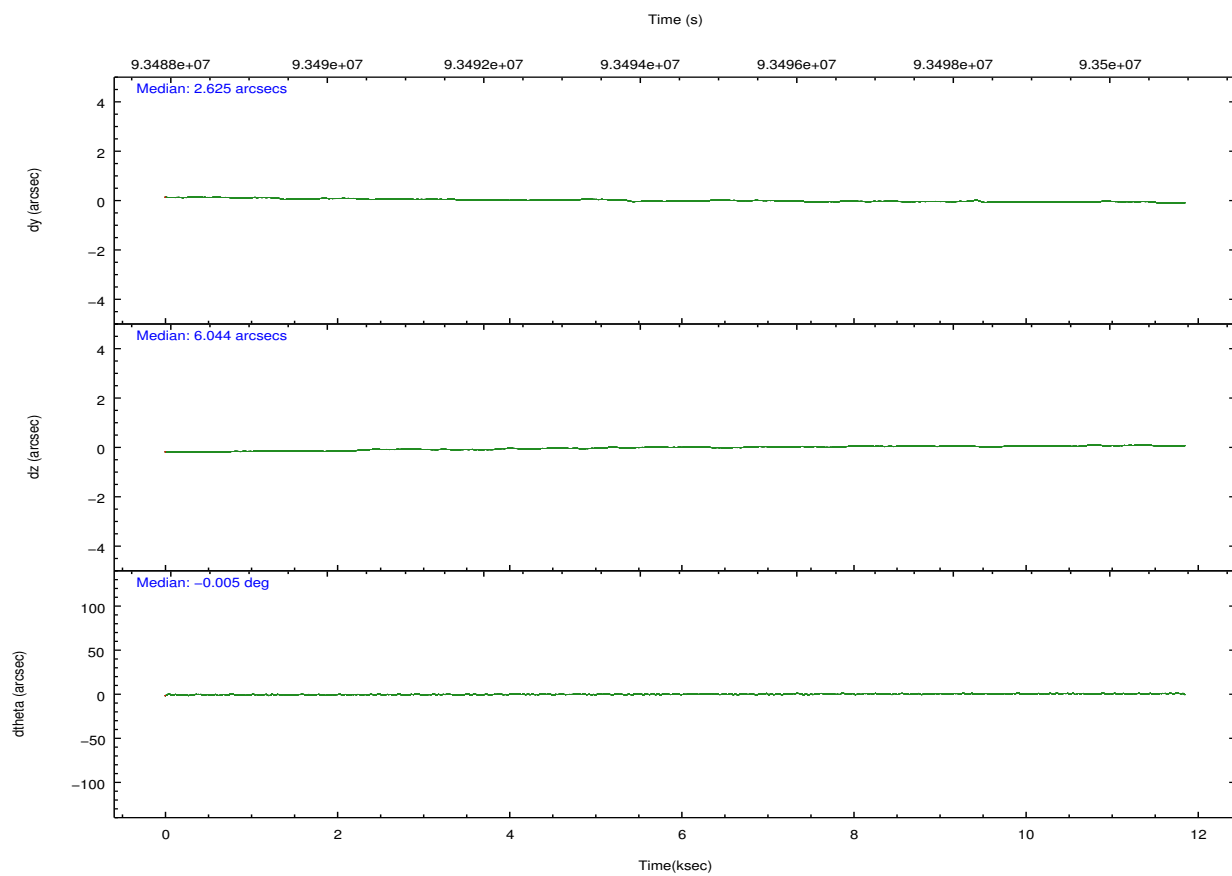
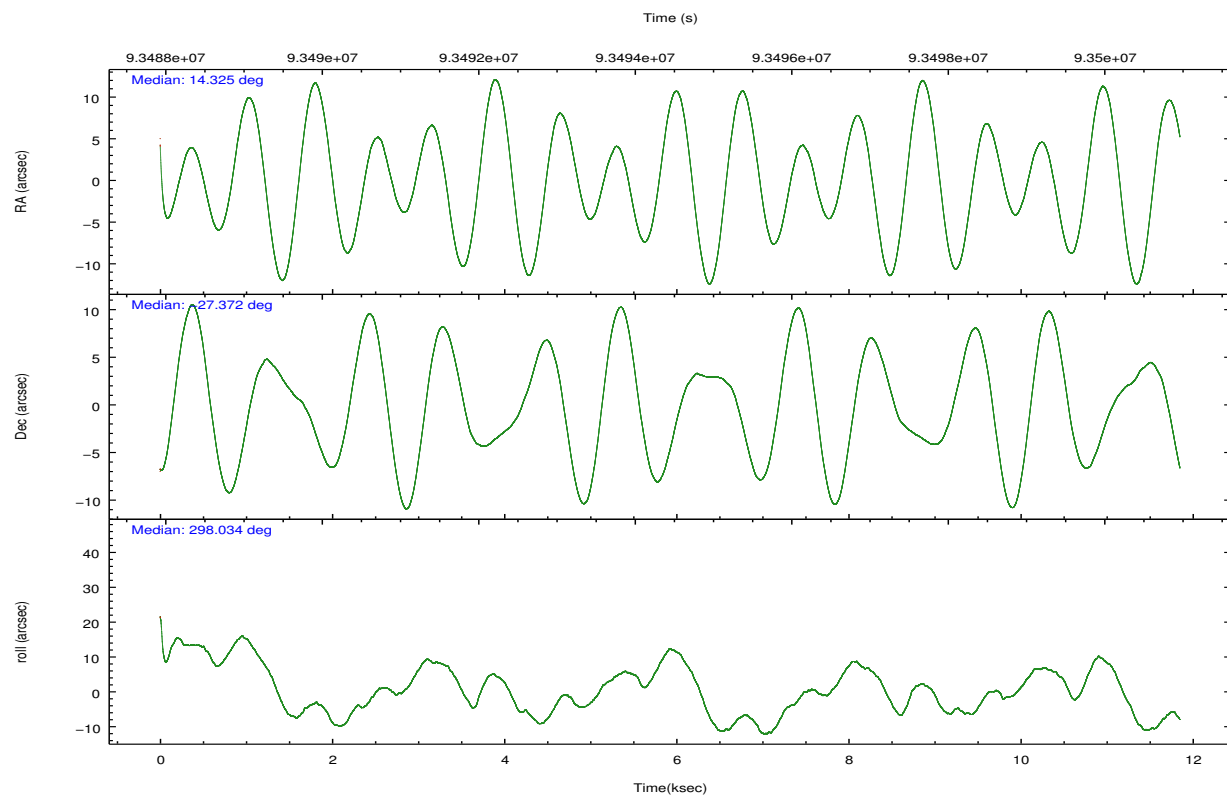
2.2 Compared Parameters

Parameter	Planned	Actual
Instrument	ACIS	ACIS
Detector	ACIS-235678	ACIS-235678
Grating	NONE	NONE
Data mode	FAINT	FAINT
Observation mode	POINTING	POINTING
[deg] Pointing RA	14.298373	14.32463304171758
[deg] Pointing Dec	-27.358155	-27.37240296976646
[deg] Pointing Roll	297.876990	298.0457063084882
[mm] SIM focus pos	-0.684267	-0.6828225247311905
[mm] SIM defocus	0	0.001444936568705701
[mm] SIM translation stage pos	-190.132523	-190.1400660498719
[mm] SIM translation stage offset	0	0.00754346686406393
[s] Observation start time (MET)	93488666.184000	93487571.317581
Observation start date	2000-12-18T01:03:22	2000-12-18T00:46:11
[s] Observation end time (MET)	93500366.184000	93501138.218099
Observation end date	2000-12-18T04:18:22	2000-12-18T04:32:18
Read mode	TIMED	TIMED

Parameter	Planned	Actual
Obspar format version number	7	7
Obspar file type	PREDICTED	ACTUAL
Obspar update status	NONE	UPDATED
Number of optional ACIS chips dropped	0	0
On-chip summing requested	N	N
Subarray requested	NONE	NONE
Alternating exposures requested	N	N
[s] Primary exposure time	0.000000	3.2

2.3 Aspect



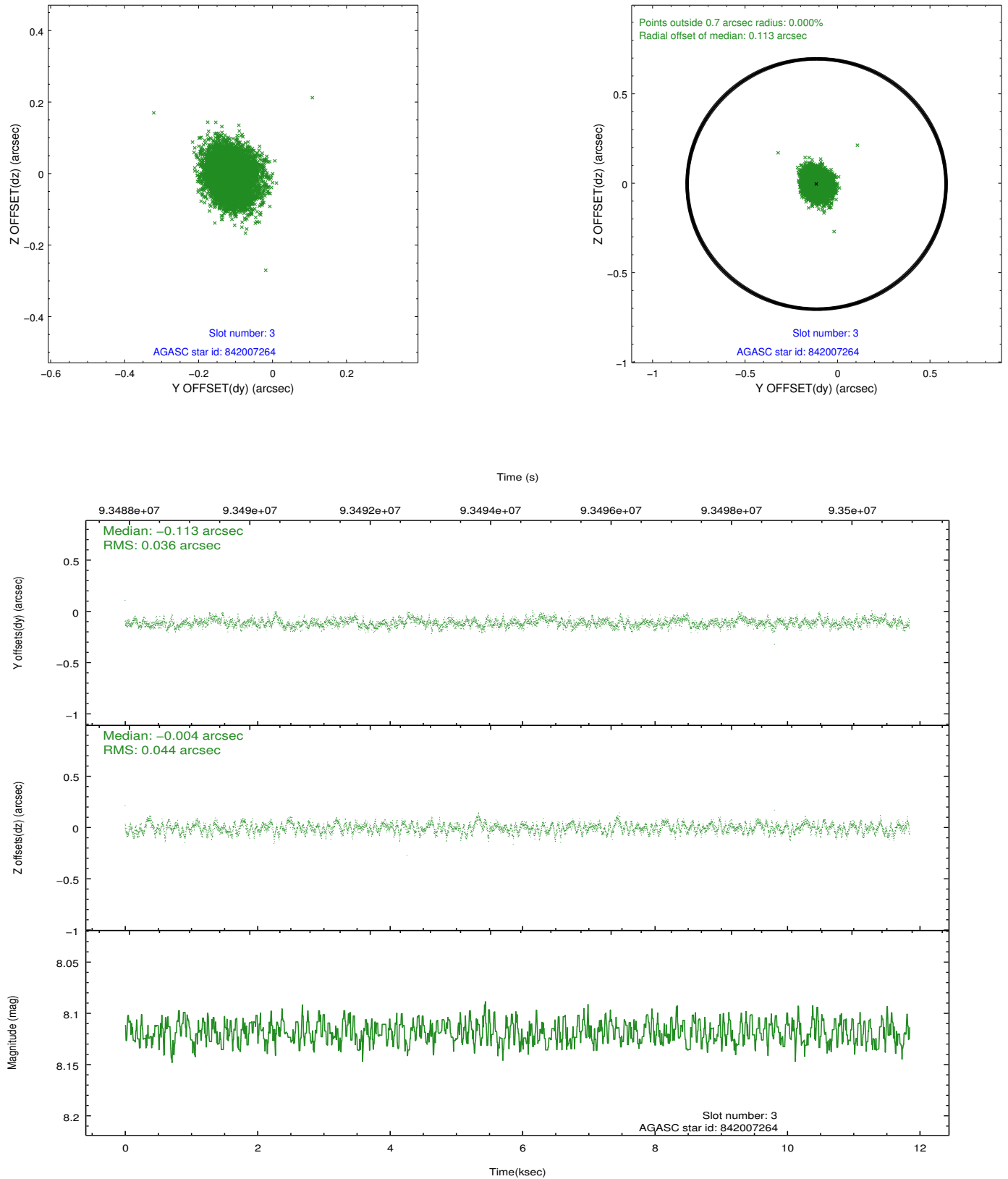


Slot Statistics

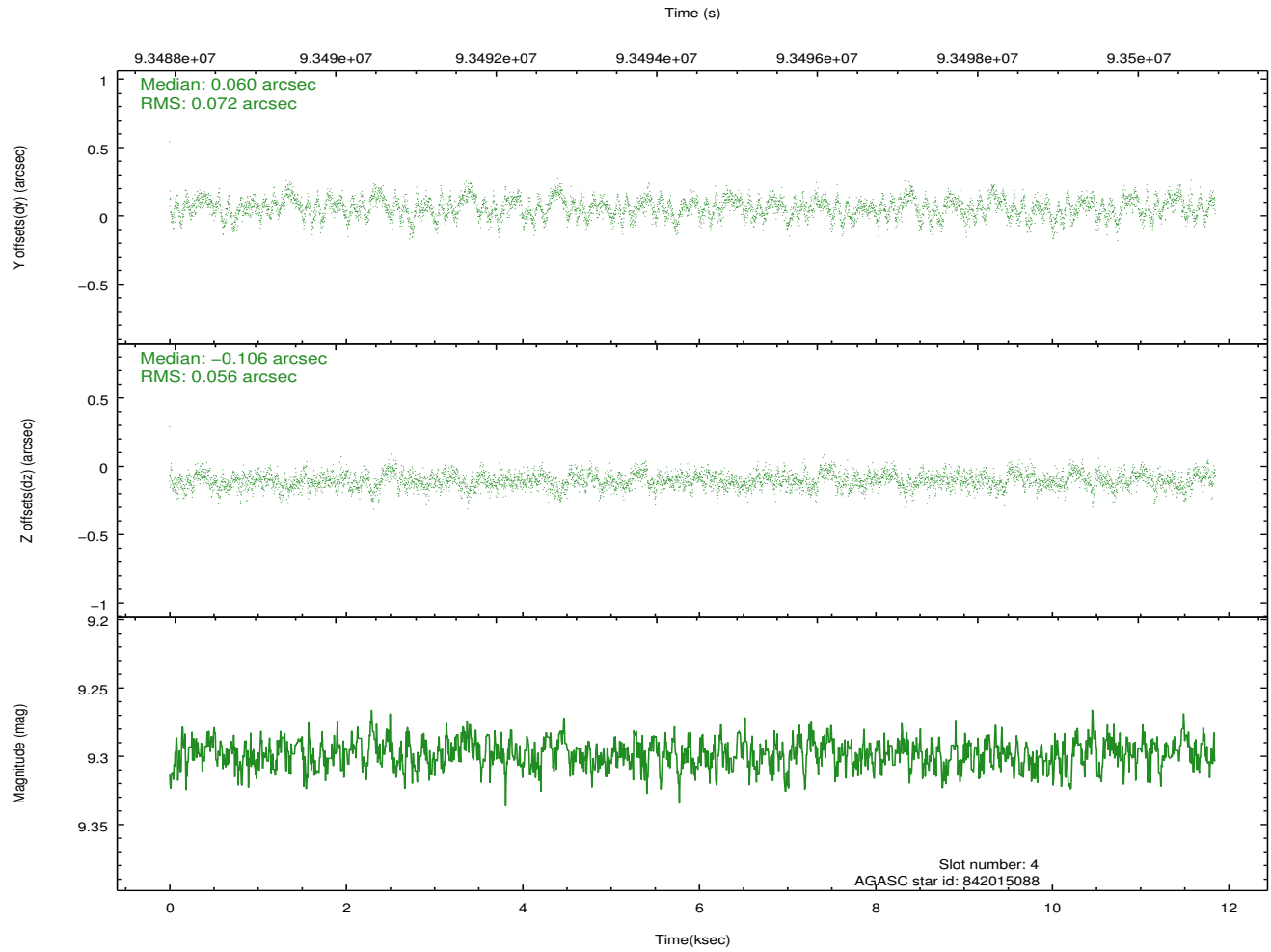
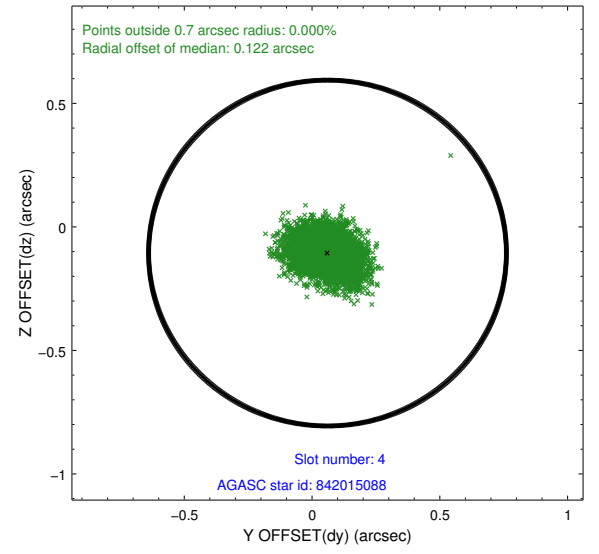
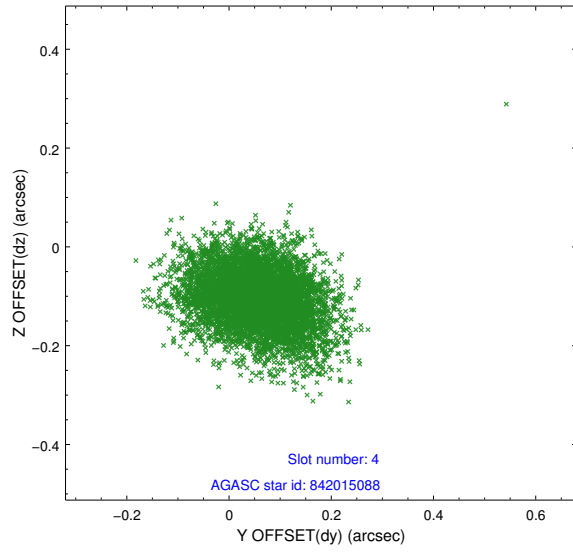
slot	status	id	mag	n_pts	med_dy	med_dz	dr1	dr2	ra	dec	mean_y	mean_z
0	FID	ACIS-S-2	7.11	2891	-0.026	0.020	0.007	0.011	0.000000	0.000000	-755.27	-1727.15
1	FID	ACIS-S-4	7.21	2891	-0.031	0.007	0.005	0.010	0.000000	0.000000	2157.79	180.93
2	FID	ACIS-S-5	7.23	2891	0.025	-0.018	0.007	0.012	0.000000	0.000000	-1807.54	175.00
3	GUIDE	842007264	8.12	5780	-0.113	-0.004	0.061	0.096	14.570692	-27.092422	-437.76	1217.48
4	GUIDE	842015088	9.30	5778	0.060	-0.106	0.097	0.159	13.933025	-27.893682	1161.89	-1930.27
5	GUIDE	842008736	10.43	5769	0.146	0.027	0.147	0.248	14.870220	-27.799337	2258.61	864.58
6	GUIDE	842015640	10.04	5778	-0.071	0.073	0.137	0.228	14.176649	-27.233495	-579.08	-135.35
7	GUIDE	842018000	10.37	5776	-0.012	0.012	0.118	0.194	14.125956	-27.227447	-674.41	-268.90

2.4 Star Slots

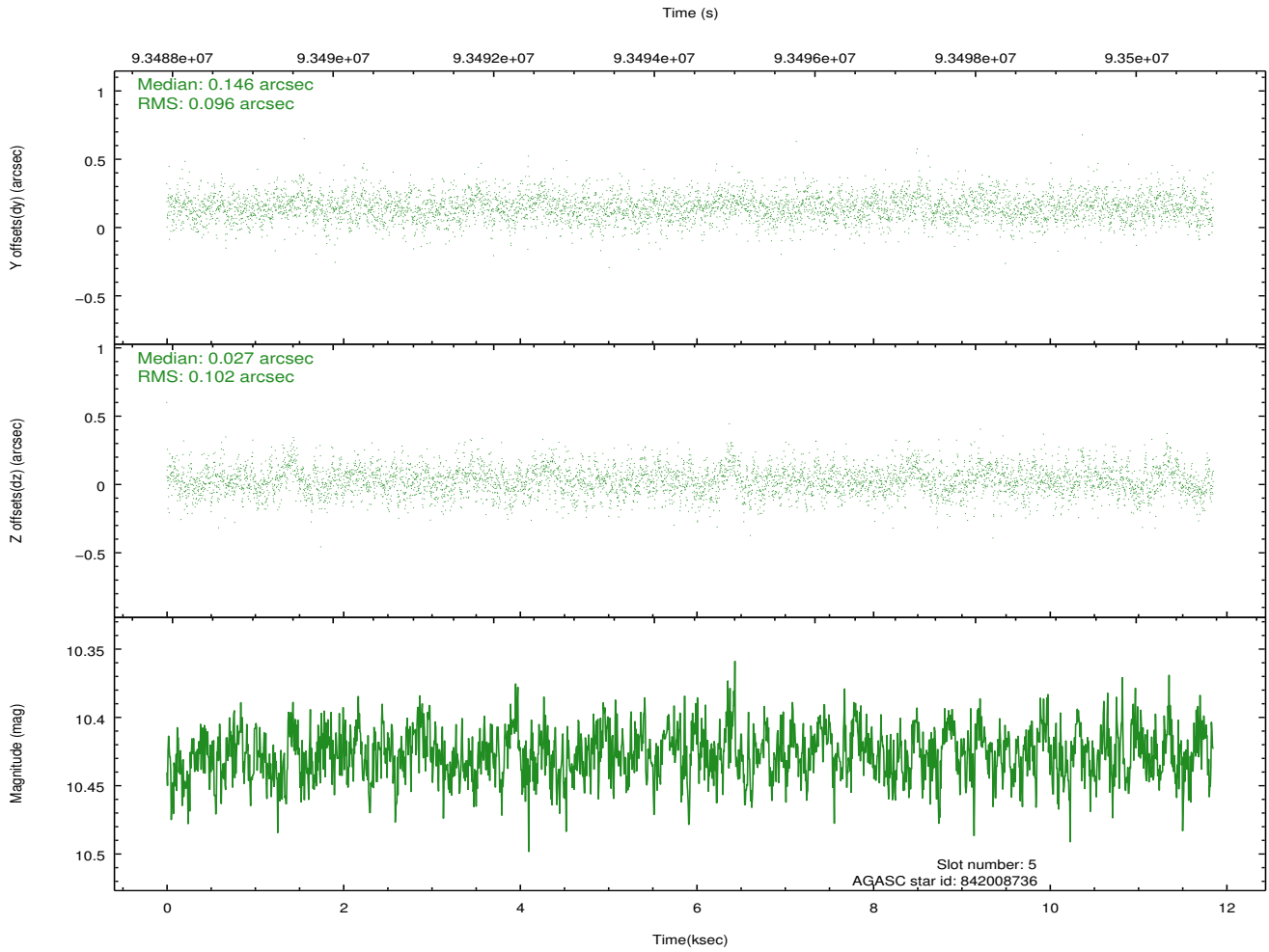
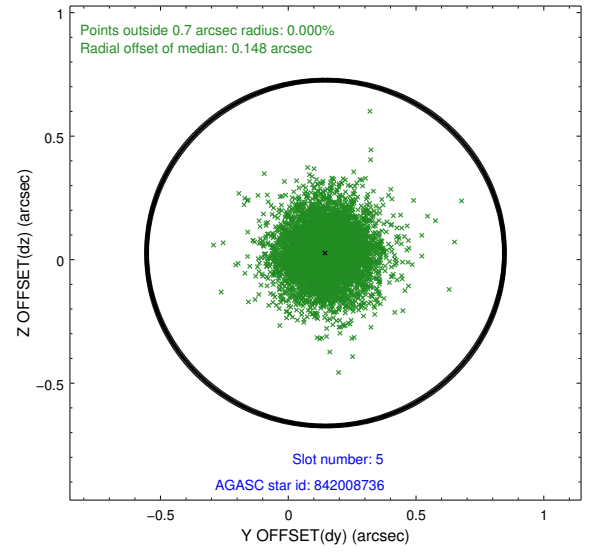
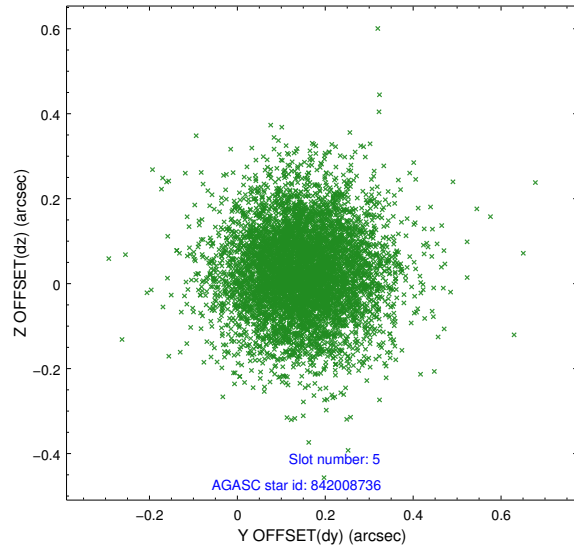
2.4.1 Slot 3



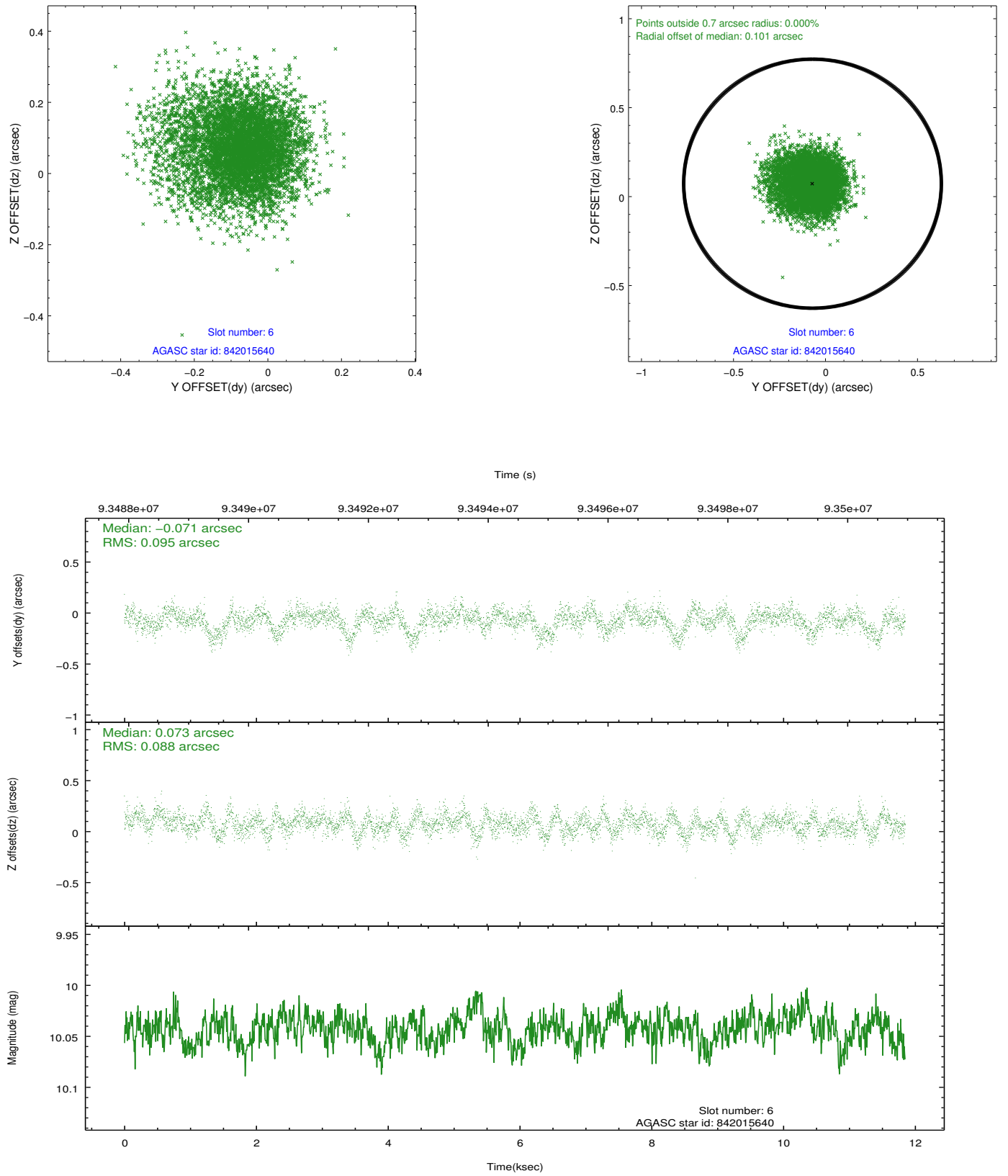
2.4.2 Slot 4



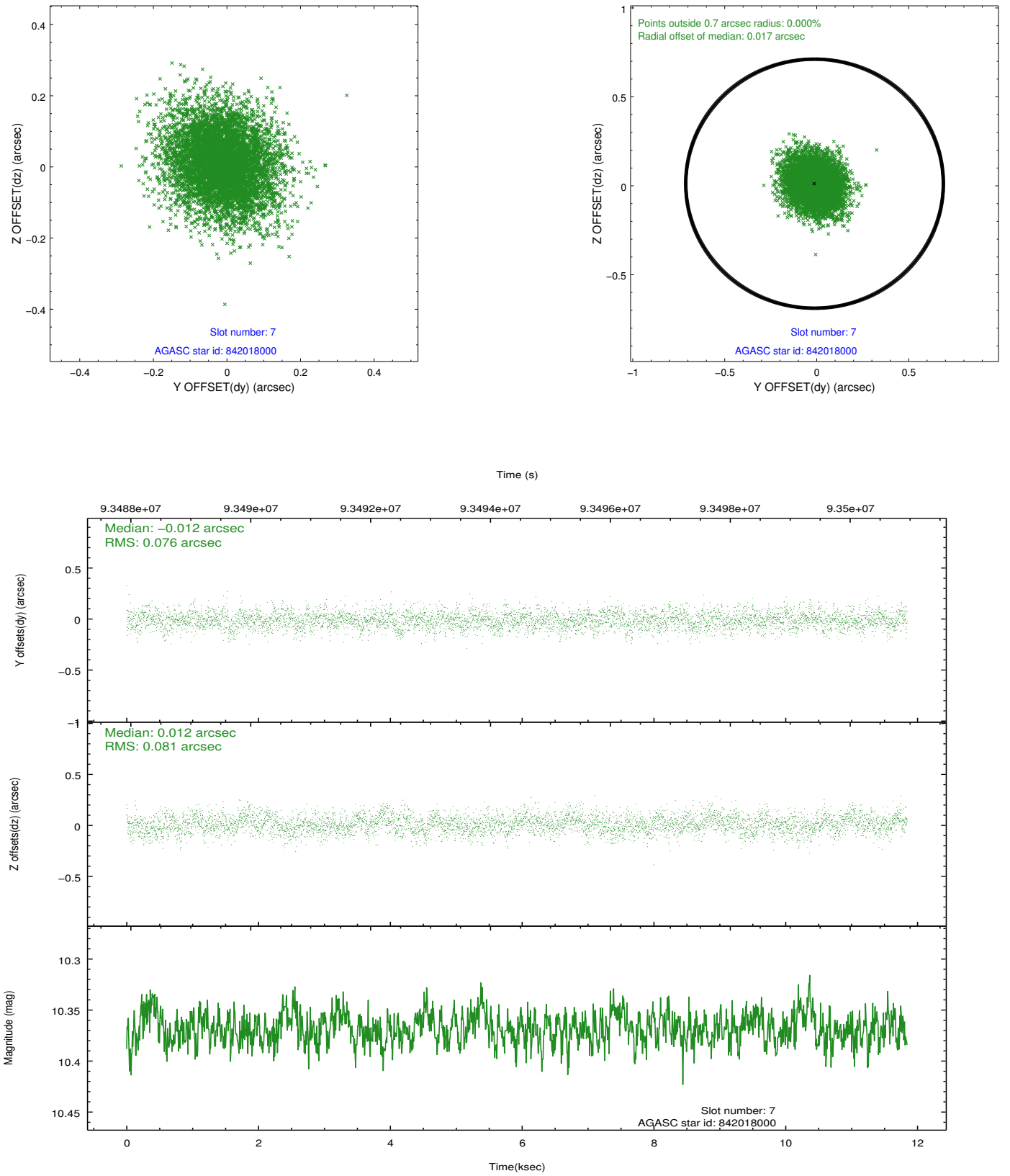
2.4.3 Slot 5



2.4.4 Slot 6

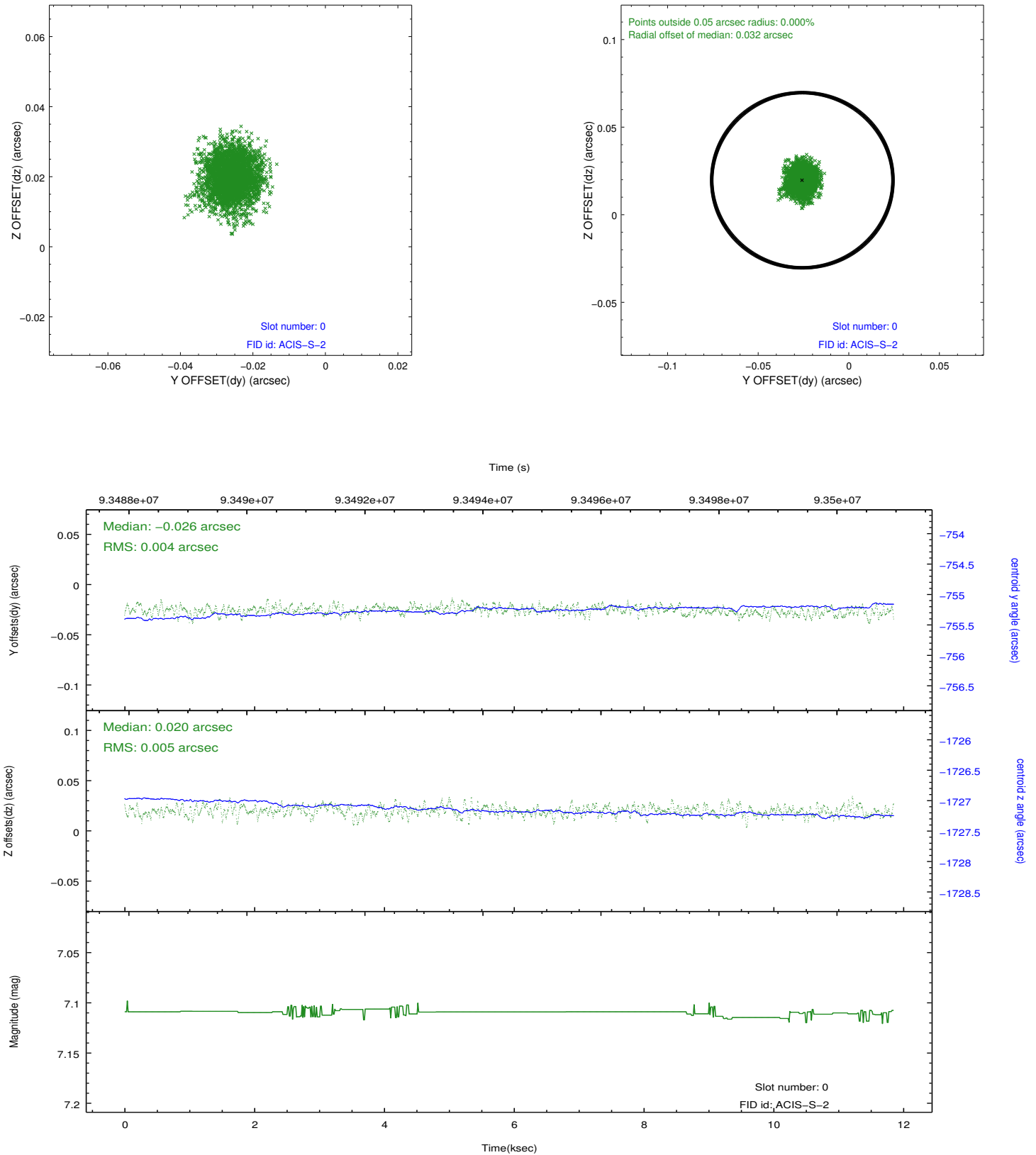


2.4.5 Slot 7

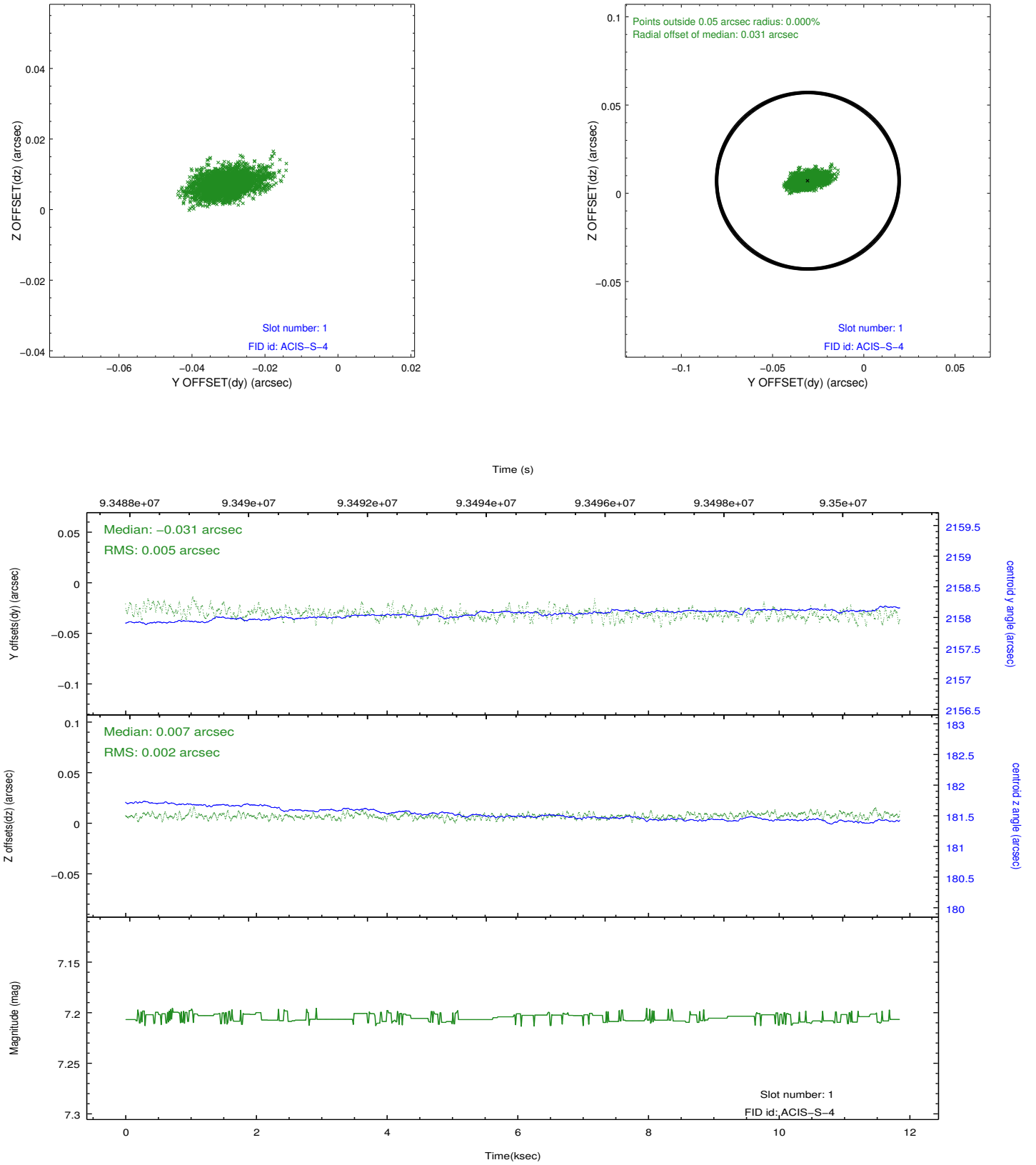


2.5 FID Slots

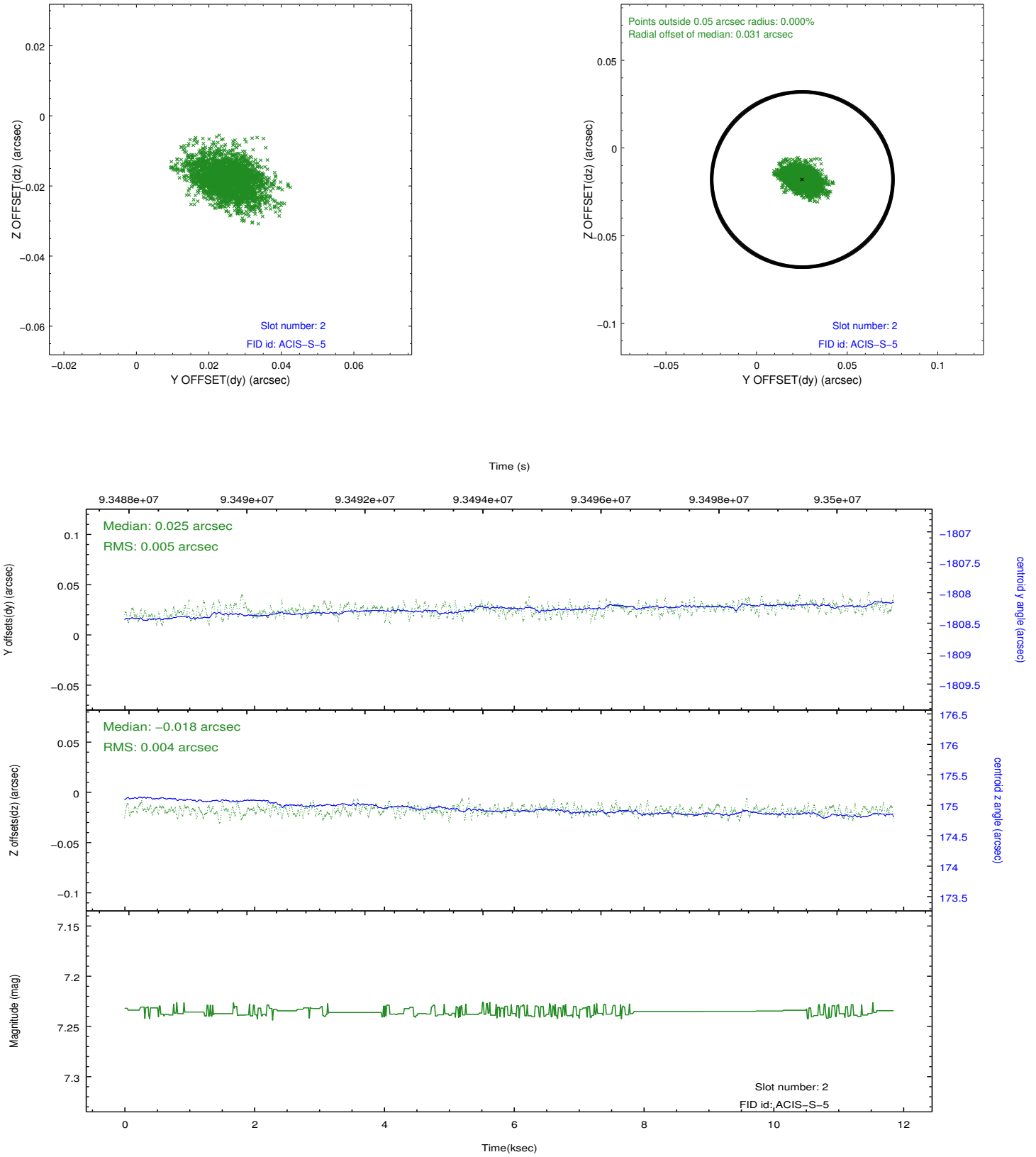
2.5.1 Slot 0



2.5.2 Slot 1



2.5.3 Slot 2



A Summary

A.1 Status

V&V Scientist	Beth Sundheim
V&V Date (YYYY-MM-DD)	2012.09.12
V&V Edition	1
V&V Disposition and Status	OK
V&V Charge Time	11.843

A.2 Comments