

V&V Reference Report

L2 ASCDS Version : 7.6.9

Observation 2236 - L2 Version 001
Chandra X-Ray Center

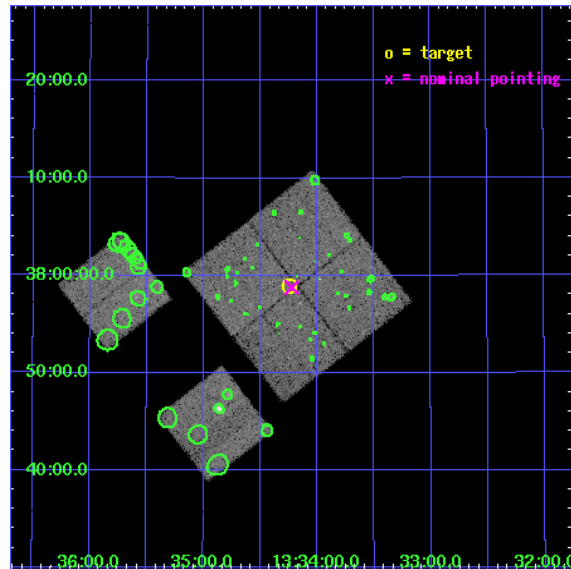
L2 Processing Date : Nov 28 2006

Contents

1	Front	2
2	OBI	3
2.1	OBI	3
2.1.1	Images	3
2.1.2	Bias	3
2.1.3	Parameters	4
2.1.4	Events	4
2.2	Compared Parameters	5
2.3	Aspect	6
2.4	Star Slots	9
2.4.1	Slot 3	9
2.4.2	Slot 4	10
2.4.3	Slot 5	11
2.4.4	Slot 6	12
2.4.5	Slot 7	13
2.5	FID Slots	14
2.5.1	Slot 0	14
2.5.2	Slot 1	15
2.5.3	Slot 2	16
3	Point Sources	17
A	Summary	18
A.1	Status	18
A.2	Comments	18

1 Front

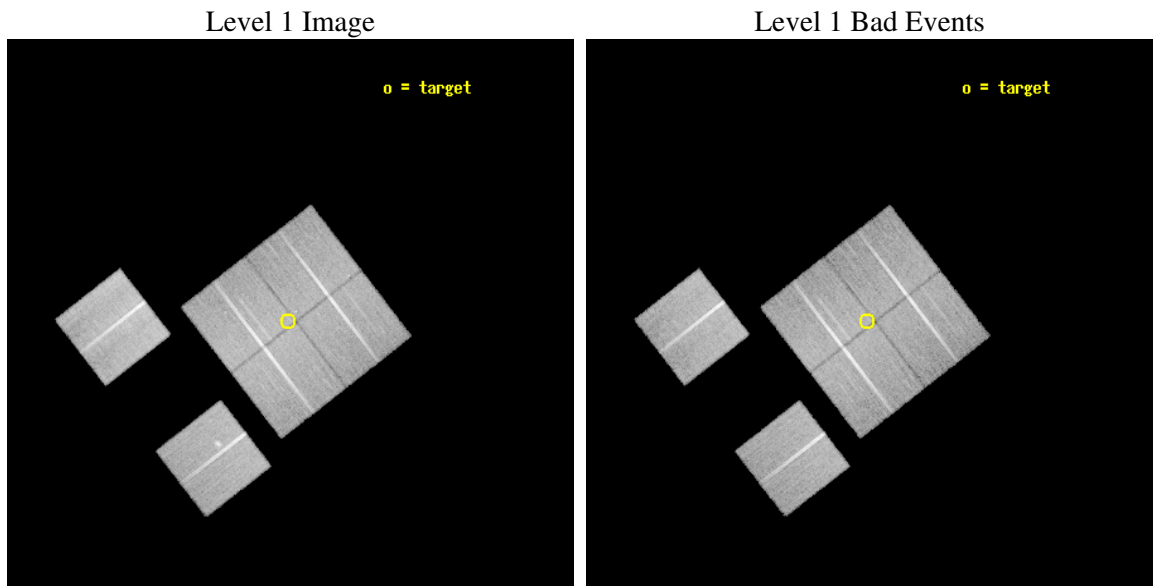
seq_num	900063
obs_id	2236
title	A COMBINED CHANDRA/XMM ATTACK ON THE ASTROPHYSICS OF THE HARD X-RAY BACKGROUND.
observer	Prof Ian McHardy
object	XMM 13HR - FIELD 1
dtcycle	0
cycle	P
ra_targ	203.560853
dec_targ	37.982151
ra_nom	203.55560806438
dec_nom	37.979858346828
roll_nom	232.20191510627
revision	2
ontime	30179.200028107
livetime	29797.052825618
ontime0	30175.95903793
ontime1	30179.200028107
ontime2	30179.200028107
ontime3	30179.200028107
ontime6	30175.959067866
ontime8	30179.200028107
l2events	120256



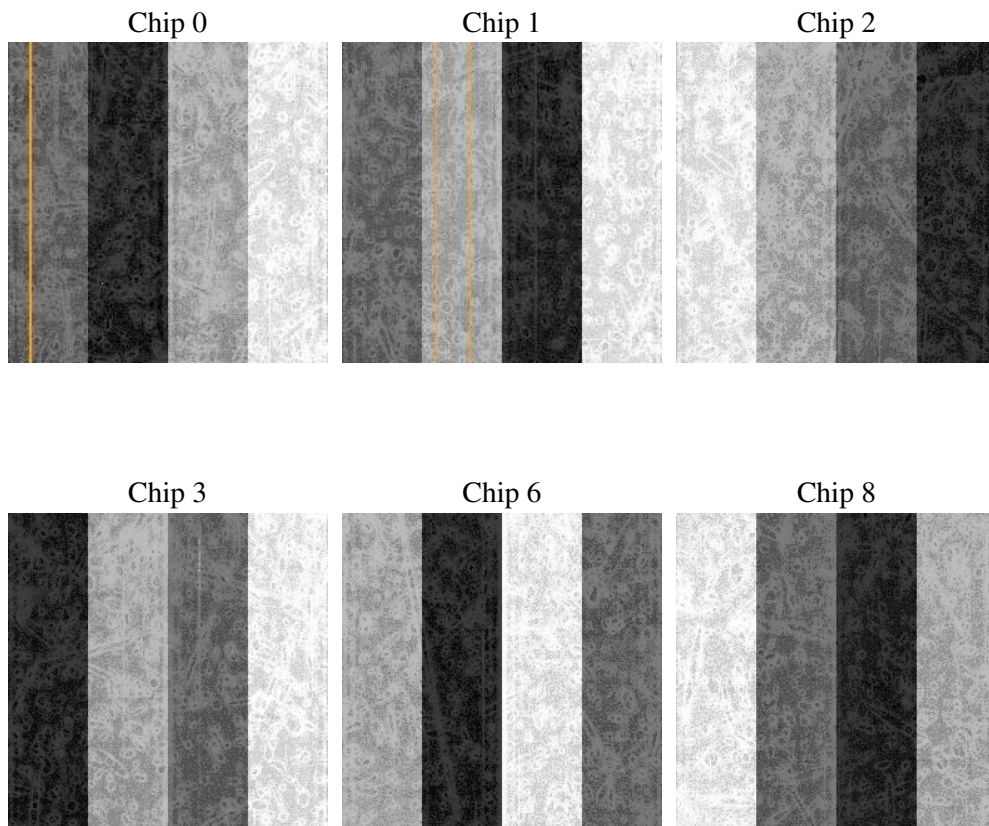
2 OBI

2.1 OBI

2.1.1 Images



2.1.2 Bias



2.1.3 Parameters

obi_num	1
ascdsver	7.6.9
caldsver	3.2.4
date	2006-11-28T04:29:29
revision	2

sched_exp_time	30425.000000
ontime	30183.423605695
ontime0	30180.182615519
ontime1	30183.423605695
ontime2	30183.423575789
ontime3	30183.423605695
ontime6	30180.182645455
ontime8	30183.423605695
l1events	1196001

2.1.4 Events

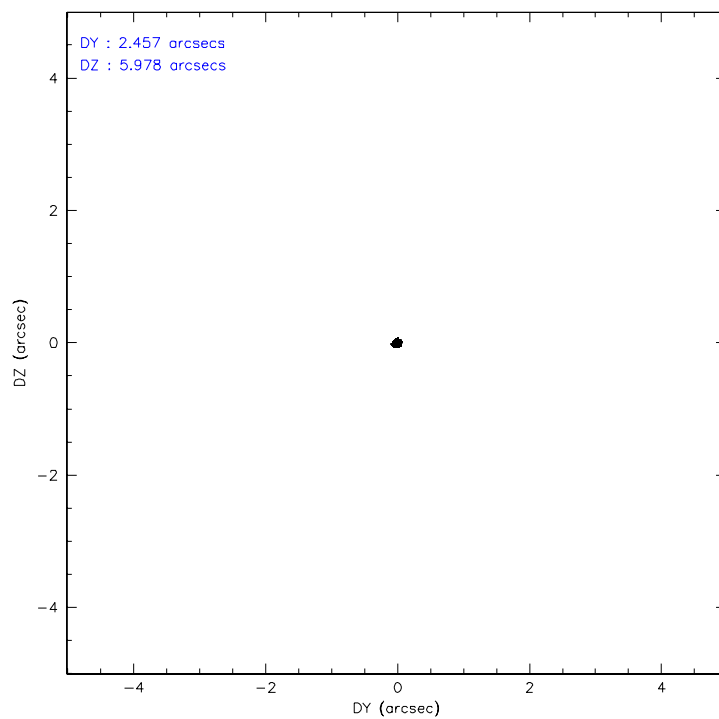
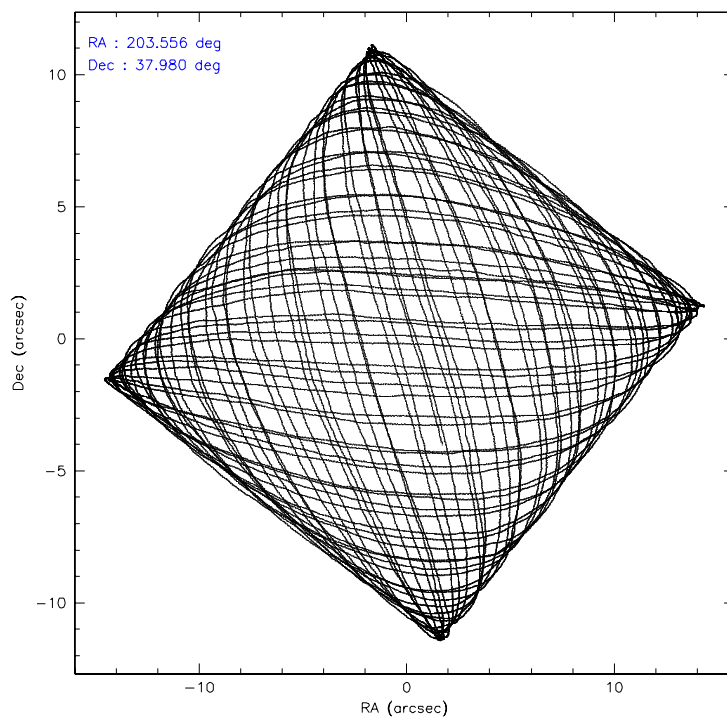
	ccd 0	ccd 1	ccd 2	ccd 3	ccd 6	ccd 8
level 1 events	175439	177276	193618	200560	198845	250263
rejected events	152498	153585	172121	177951	174708	200482
rejected %	86%	86%	88%	88%	87%	80%

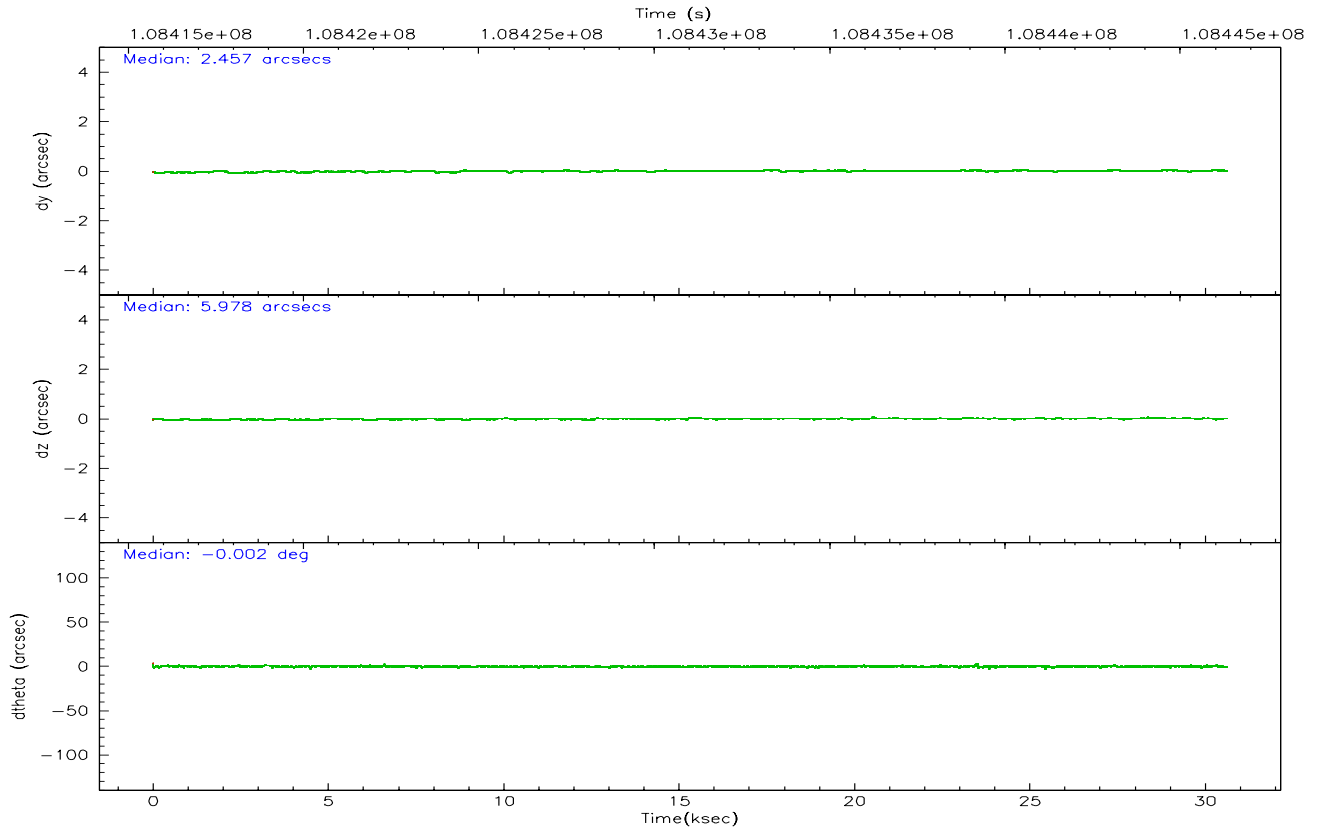
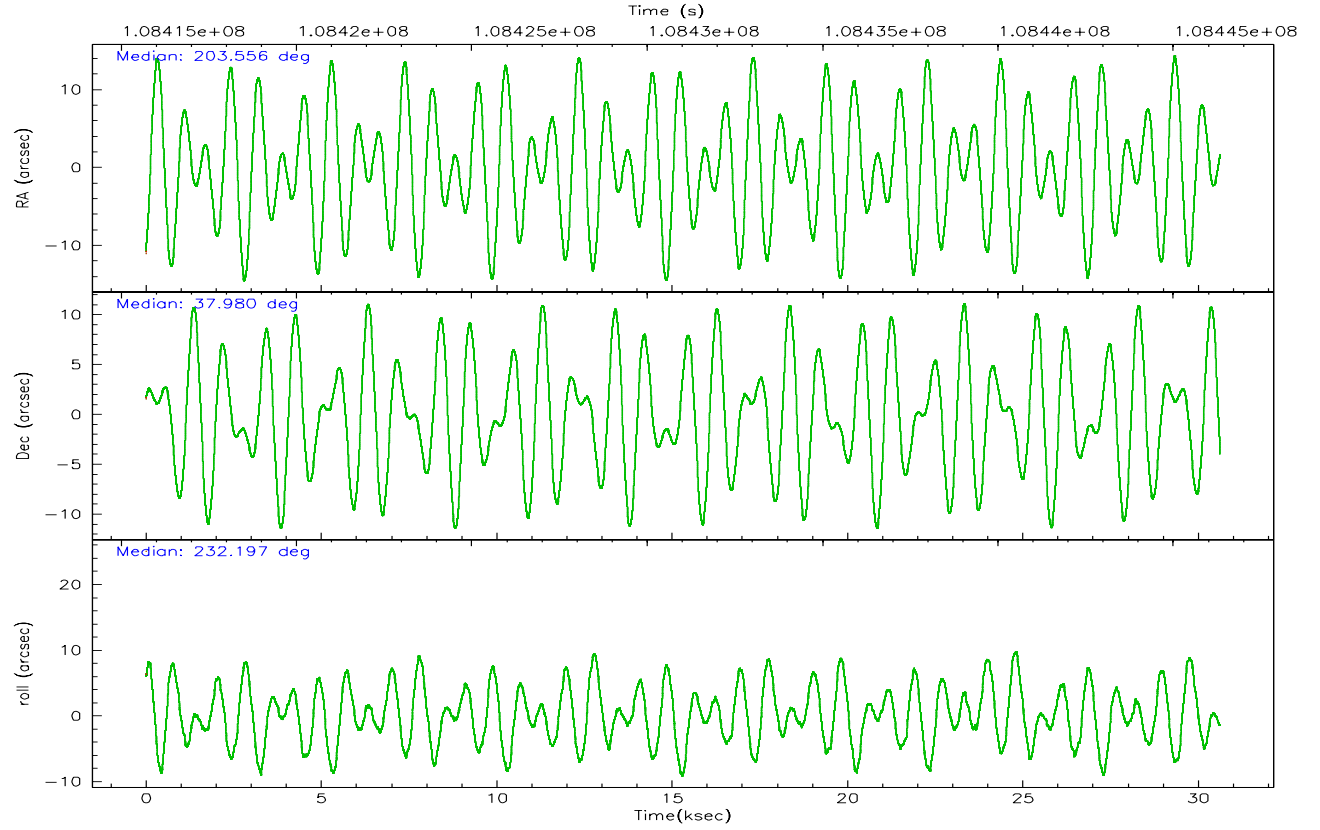
	ccd 0	ccd 1	ccd 2	ccd 3	ccd 6	ccd 8
grade 0 events	9827	9714	8881	9840	10569	15742
	5%	5%	4%	4%	5%	6%
grade 1 events	95	80	118	101	101	190
	0%	0%	0%	0%	0%	0%
grade 2 events	4828	4852	4643	4540	4721	10689
	2%	2%	2%	2%	2%	4%
grade 3 events	2304	2425	2077	2212	2322	5320
	1%	1%	1%	1%	1%	2%
grade 4 events	2026	2285	2077	2116	2247	5039
	1%	1%	1%	1%	1%	2%
grade 5 events	6766	7296	6678	7679	8024	10496
	3%	4%	3%	3%	4%	4%
grade 6 events	3960	4416	3821	3902	4280	12994
	2%	2%	1%	1%	2%	5%
grade 7 events	145633	146208	165323	170170	166581	189793
	83%	82%	85%	84%	83%	75%

2.2 Compared Parameters

Parameter	Planned	Actual	Parameter	Planned	Actual
Instrument	ACIS	ACIS	Obspar format version number	6	6
Detector	ACIS-012368	ACIS-012368	Obspar file type	PREDICTED	ACTUAL
Grating	NONE	NONE	Obspar update status	NONE	UPDATED
Data mode	VFAINT	VFAINT	Number of optional ACIS chips dropped	0	0
Observation mode	POINTING	POINTING	On-chip summing requested	N	N
Pointing RA	203.560299	203.5556080643848	Subarray requested	NONE	NONE
Pointing Dec	38.007032	37.97985834682817	Alternating exposures requested	N	N
Pointing Roll	231.990339	232.2019151062715	Primary exposure time	0.000000	3.2
SIM focus pos (mm)	-0.782348	-0.7809083437167272			
SIM defocus (mm)	0	0.001439871863259334			
SIM translation stage pos (mm)	-233.592463	-233.5874344608287			
SIM translation stage offset (mm)	0	-0.005018542100998502			
Observation start time	108415910.184000	108415534.03189			
Observation start date	2001-06-08T19:30:46	2001-06-08T19:25:34			
Observation end time	108446335.184000	108446469.5581			
Observation end date	2001-06-09T03:57:51	2001-06-09T04:01:09			
Read mode	TIMED	TIMED			

2.3 Aspect



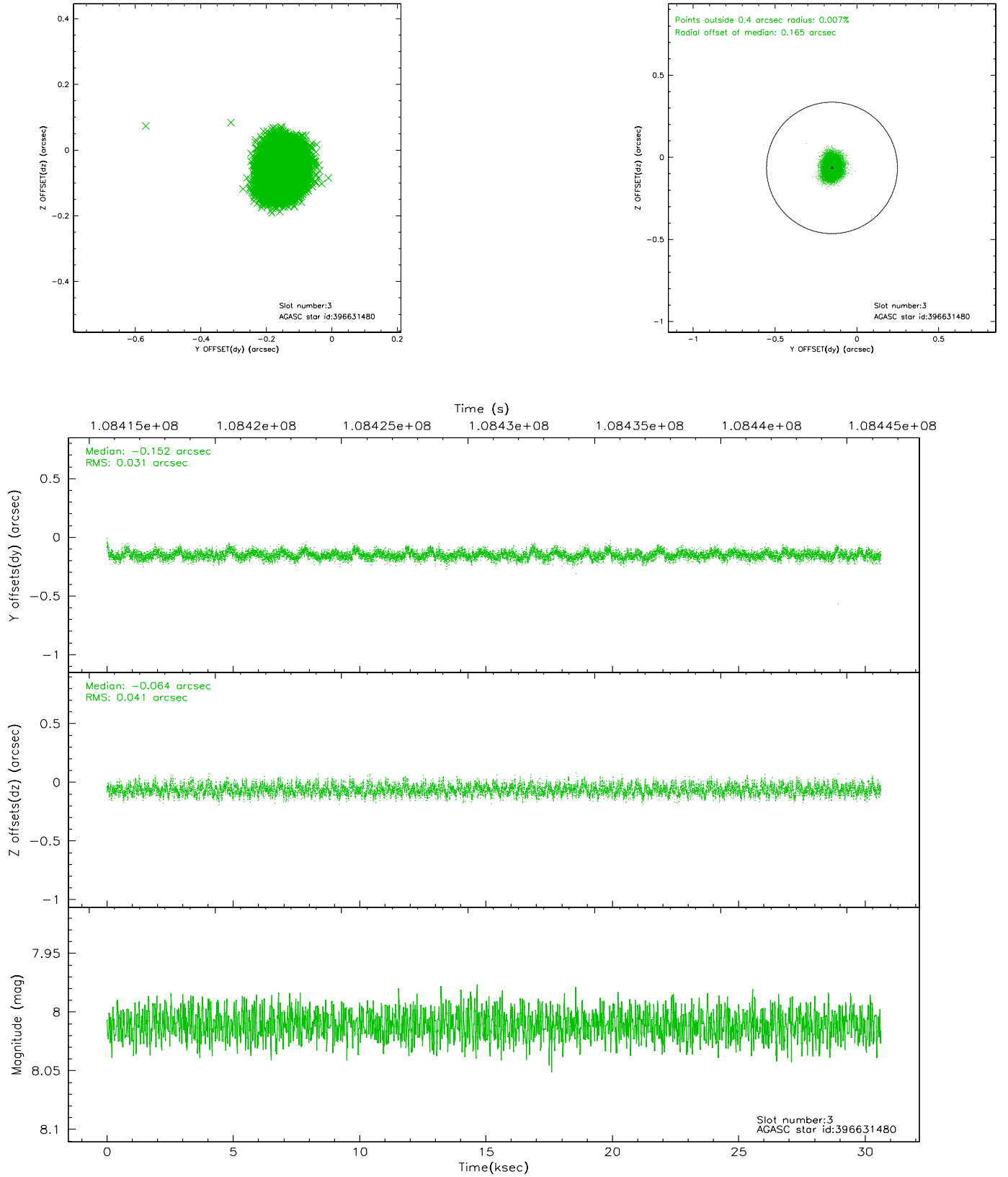


Slot Statistics

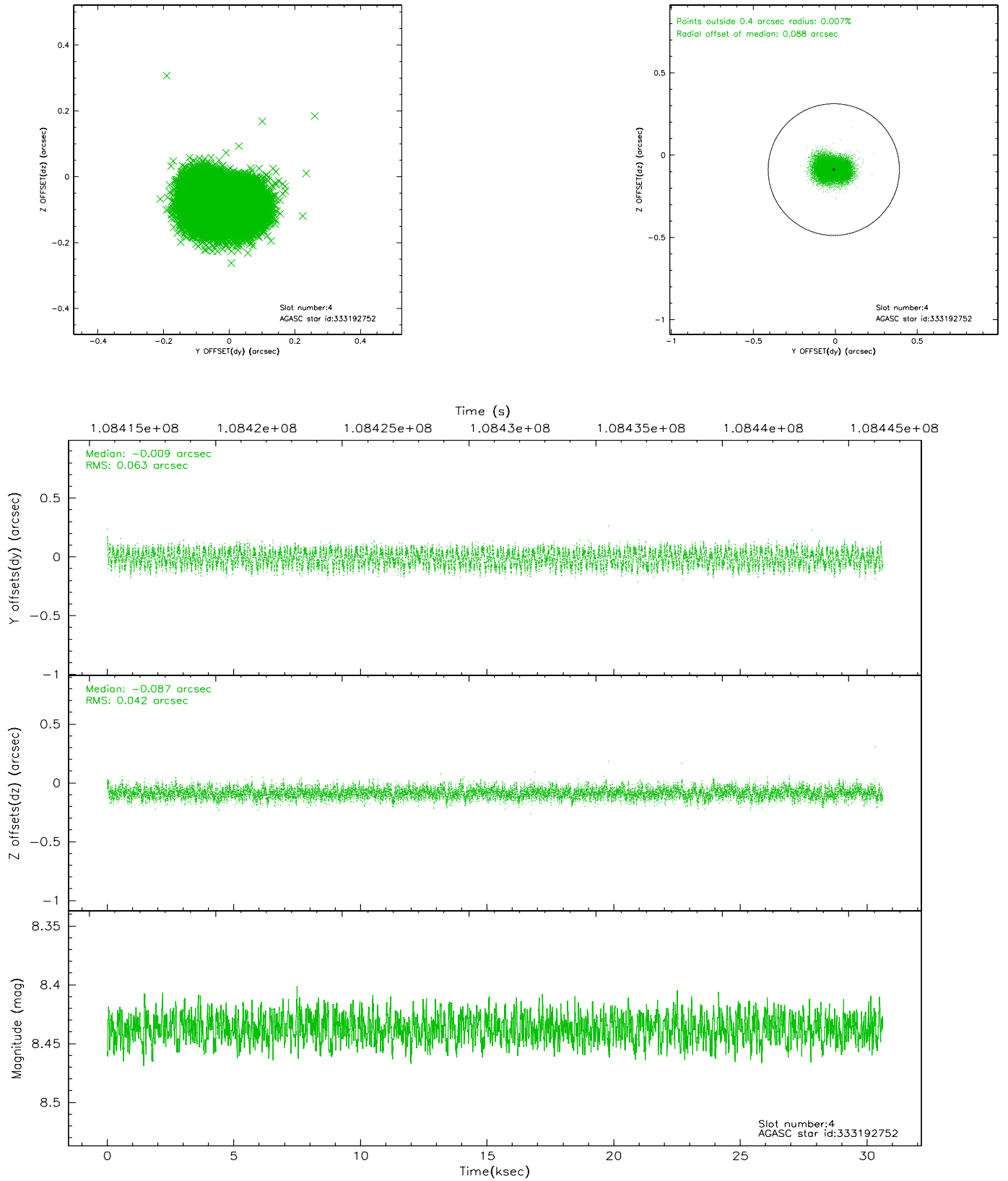
slot	status	id	mag	n_pts	med_dy	med_dz	dr1	dr2	ra	dec	mean_y	mean_z
0	FID	ACIS-I-2	7.15	7470	-0.020	-0.031	0.009	0.015	0.000000	0.000000	-756.83	-835.74
1	FID	ACIS-I-4	7.18	7467	-0.059	0.029	0.006	0.010	0.000000	0.000000	2157.15	1070.47
2	FID	ACIS-I-5	7.23	7468	-0.022	0.070	0.008	0.014	0.000000	0.000000	-1810.58	1068.42
3	GUIDE	396631480	8.01	14934	-0.152	-0.064	0.054	0.088	203.891262	37.702710	281.16	1416.51
4	GUIDE	333192752	8.44	14937	-0.009	-0.087	0.082	0.124	203.839277	37.405848	1212.94	1960.93
5	GUIDE	333190472	9.30	14913	0.257	0.188	0.076	0.124	203.664903	37.181947	2155.71	2066.16
6	GUIDE	396628240	9.35	14932	-0.126	0.095	0.082	0.133	203.780849	38.306087	-1232.43	-172.20
7	GUIDE	396632024	9.53	14865	0.028	-0.133	0.103	0.163	204.531533	37.981693	-1636.80	2218.63

2.4 Star Slots

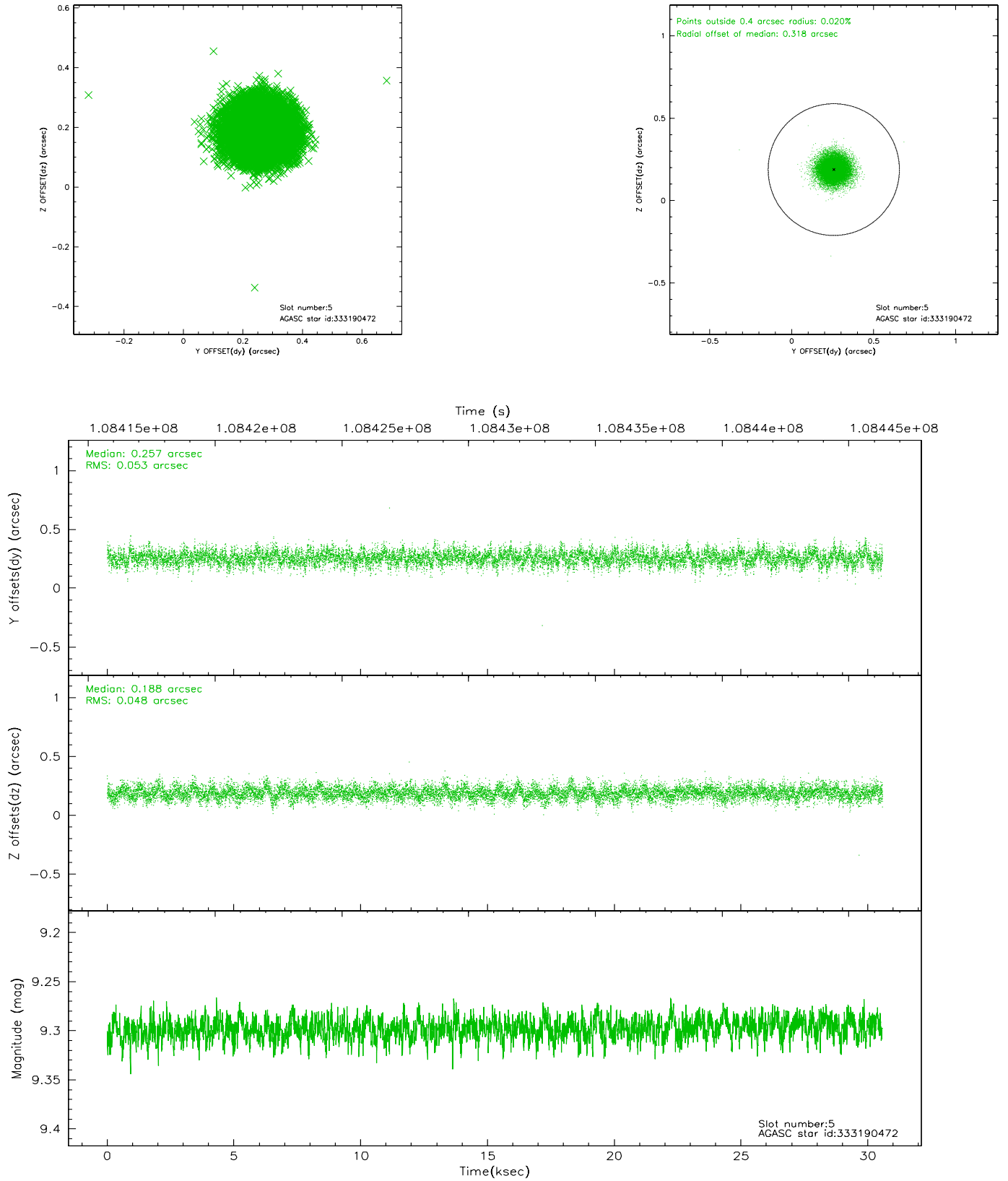
2.4.1 Slot 3



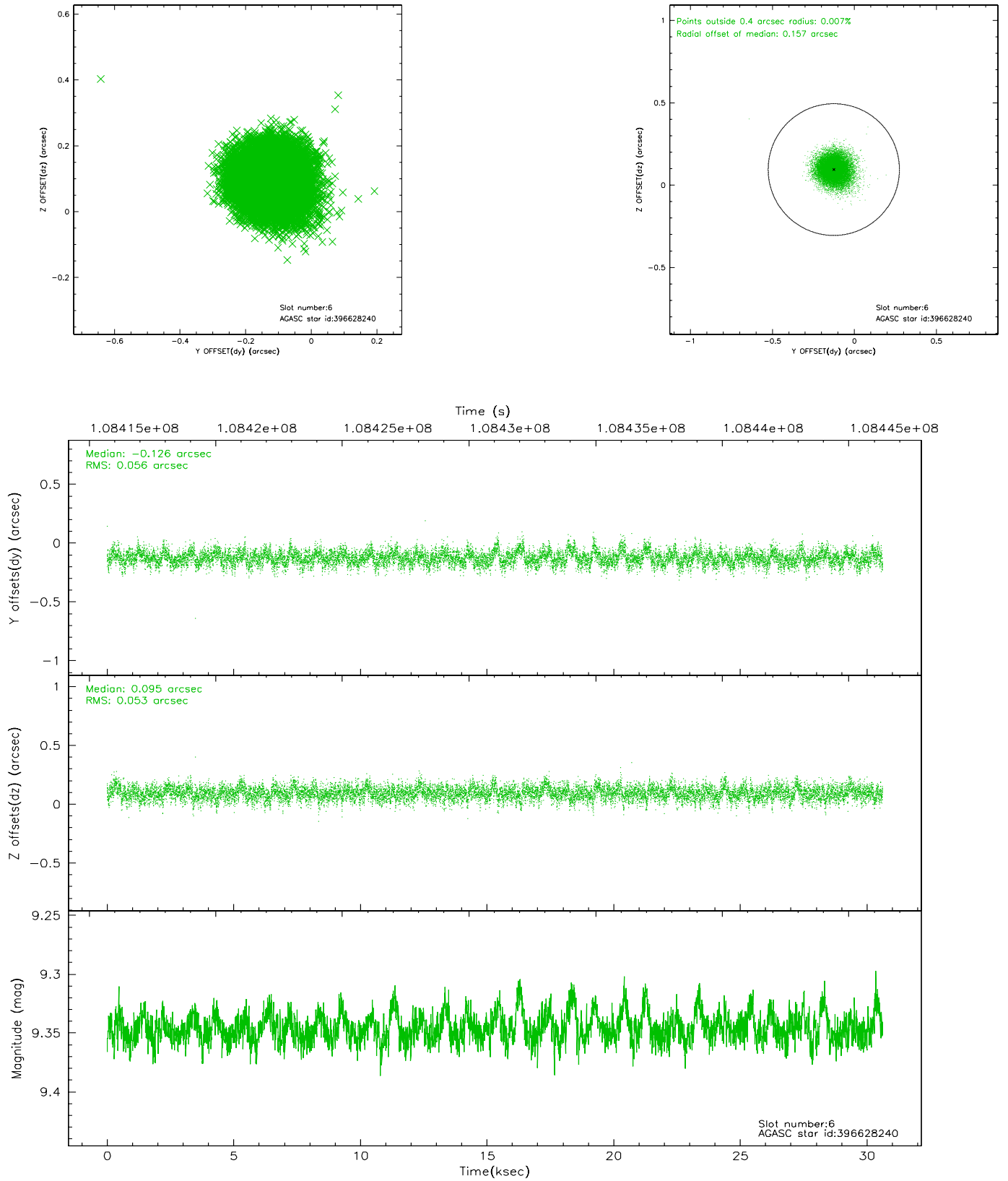
2.4.2 Slot 4



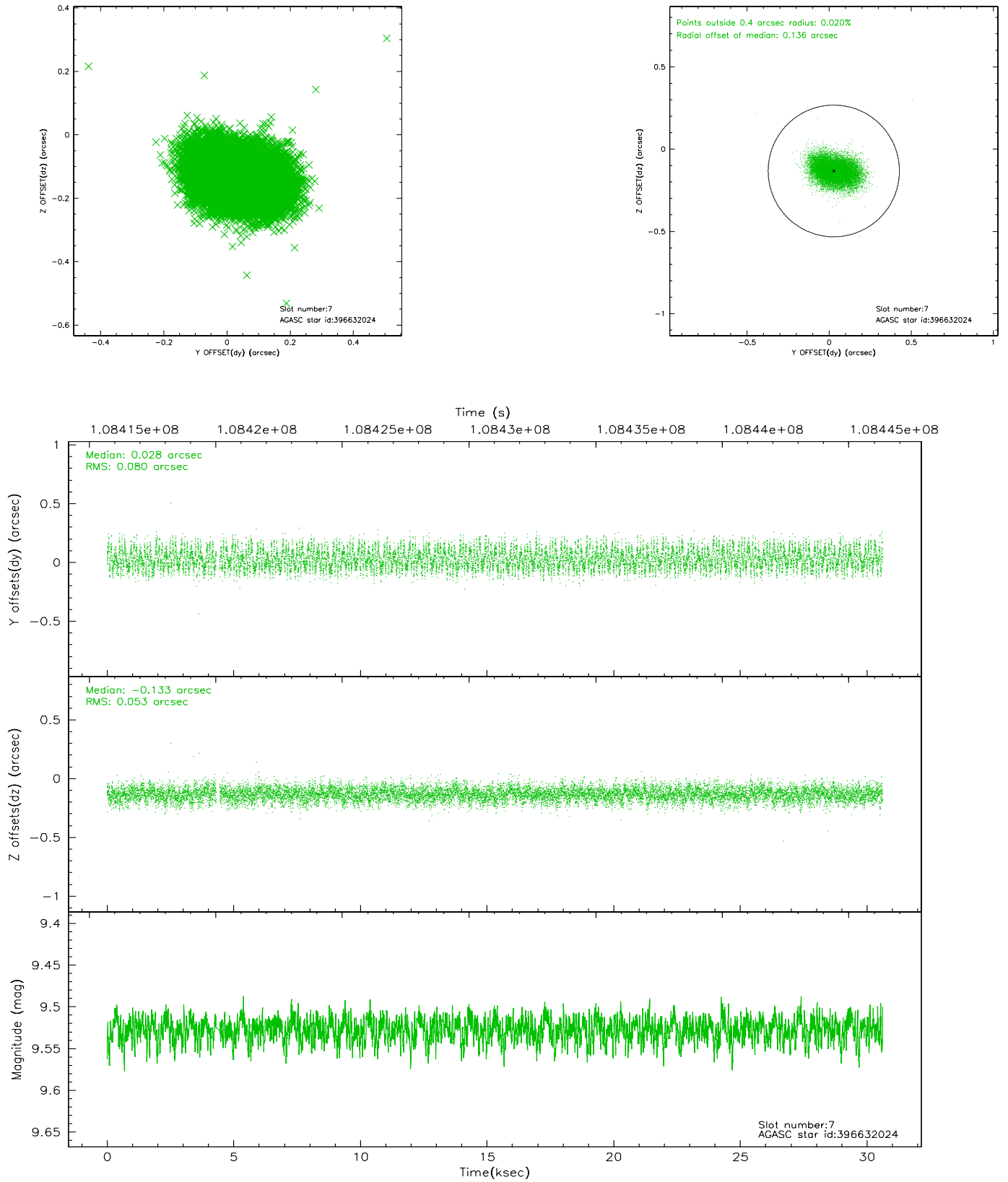
2.4.3 Slot 5



2.4.4 Slot 6

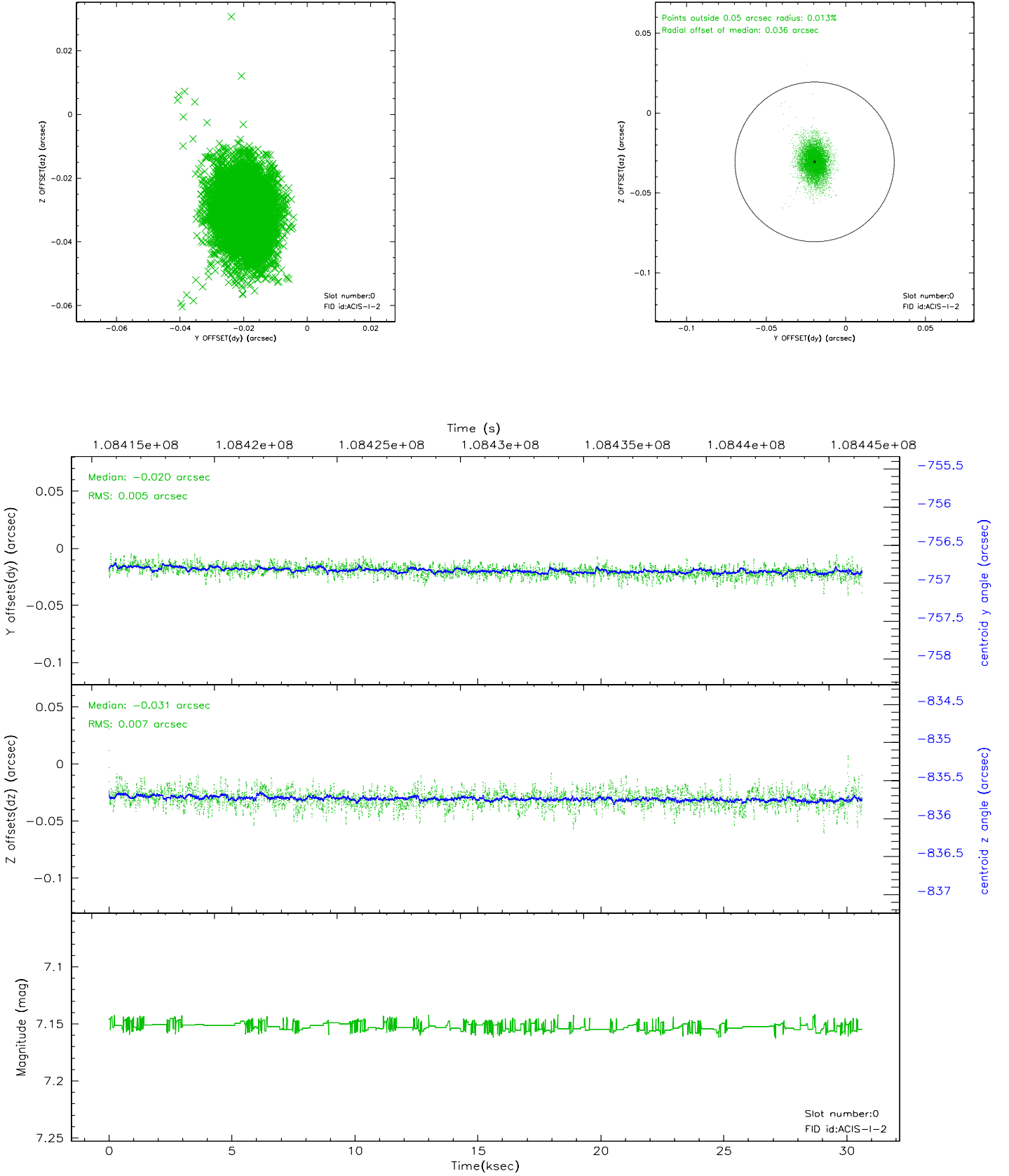


2.4.5 Slot 7

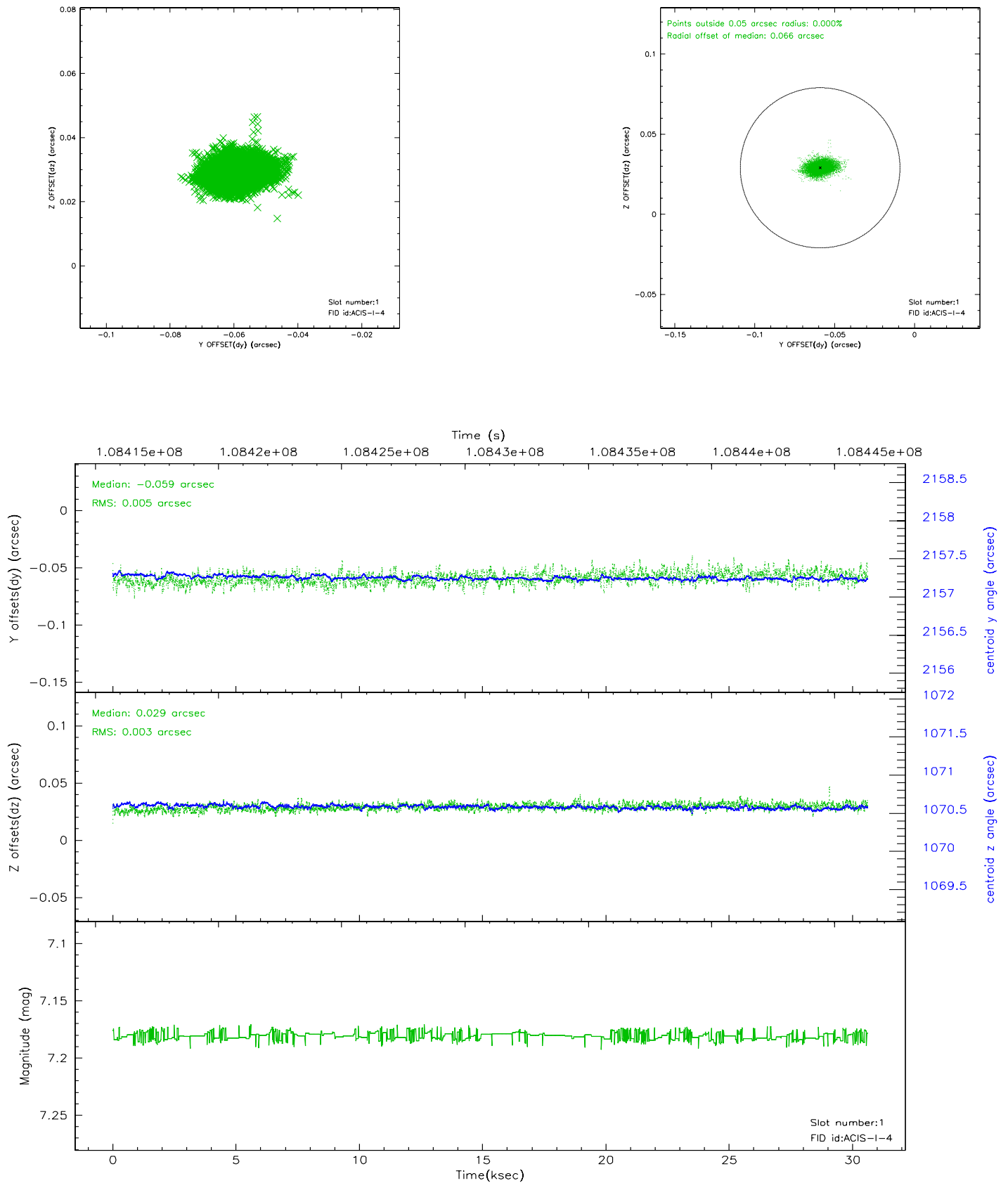


2.5 FID Slots

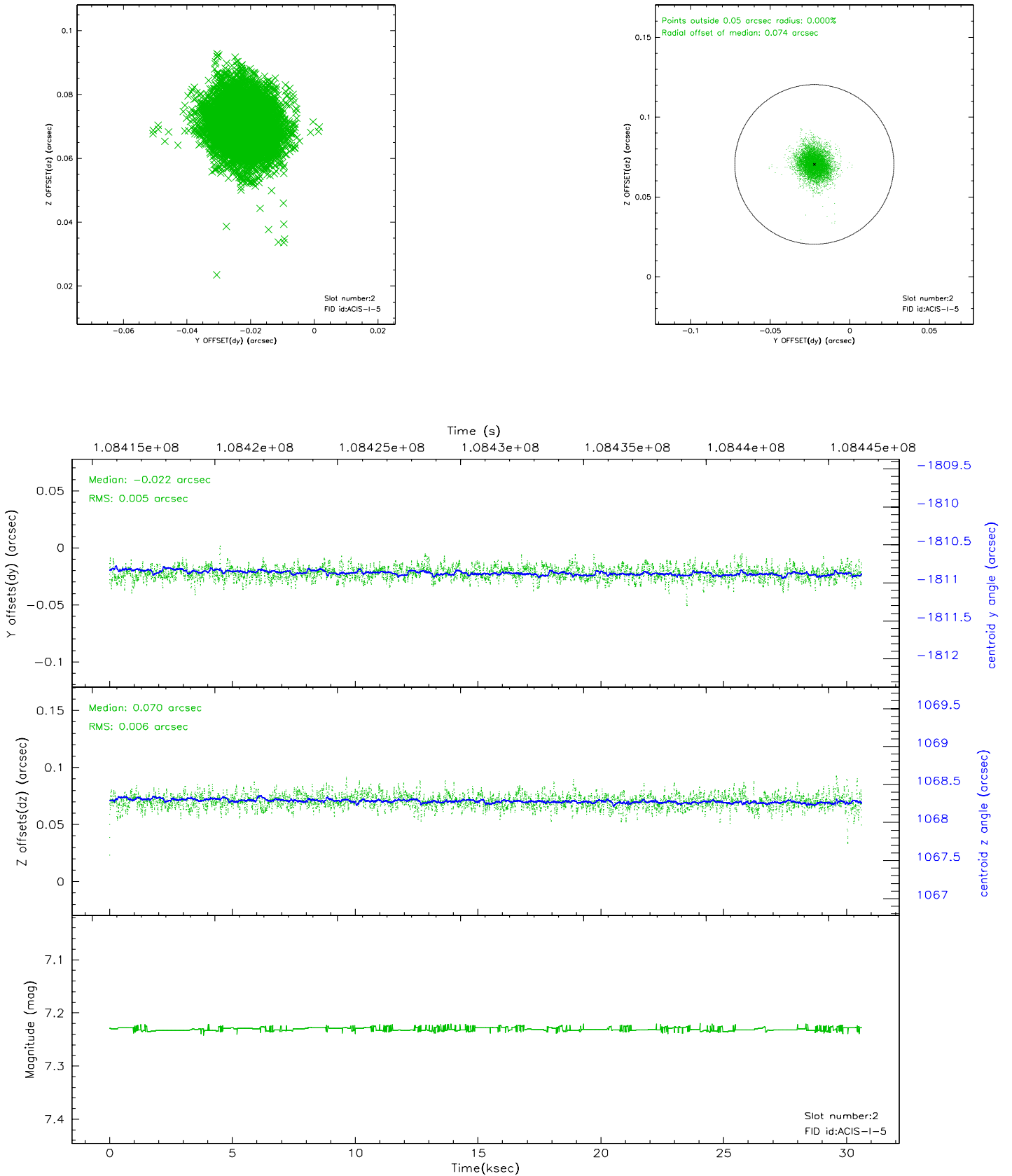
2.5.1 Slot 0



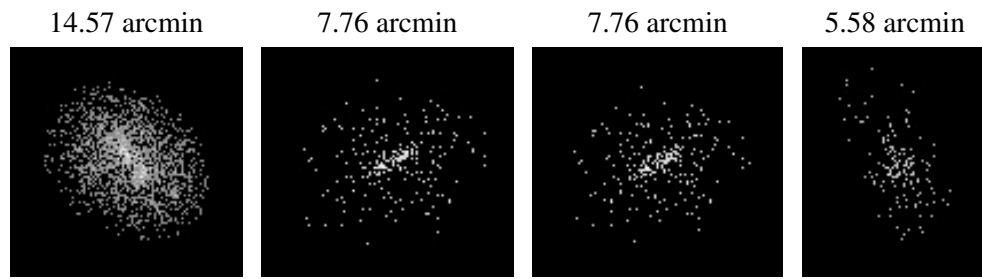
2.5.2 Slot 1



2.5.3 Slot 2



3 Point Sources



A Summary

A.1 Status

V&V Scientist	Jen Lauer
V&V Date (YYYY-MM-DD)	2006.11.28
V&V Edition	1
V&V Disposition and Status	OK
V&V Charge Time	30.2

A.2 Comments