

V&V Reference Report

L2 ASCDS Version : 7.6.9

Observation 2235 - L2 Version 001
Chandra X-Ray Center

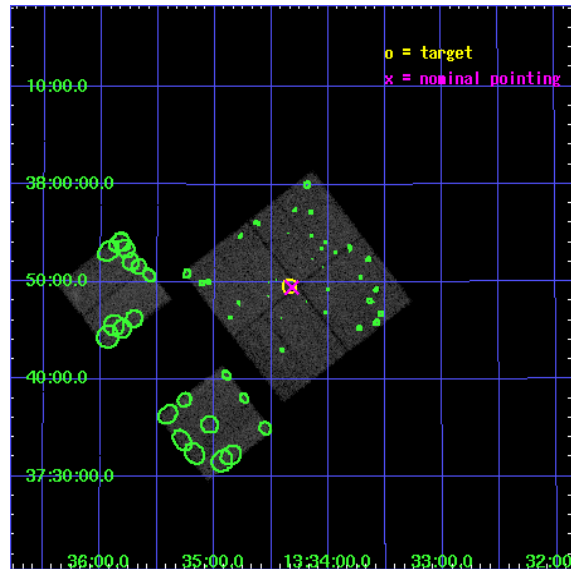
L2 Processing Date : Nov 28 2006

Contents

1	Front	2
2	OBI	3
2.1	OBI	3
2.1.1	Images	3
2.1.2	Bias	3
2.1.3	Parameters	4
2.1.4	Events	4
2.2	Compared Parameters	5
2.3	Aspect	6
2.4	Star Slots	9
2.4.1	Slot 3	9
2.4.2	Slot 4	10
2.4.3	Slot 5	11
2.4.4	Slot 6	12
2.4.5	Slot 7	13
2.5	FID Slots	14
2.5.1	Slot 0	14
2.5.2	Slot 1	15
2.5.3	Slot 2	16
3	Point Sources	17
A	Summary	18
A.1	Status	18
A.2	Comments	18

1 Front

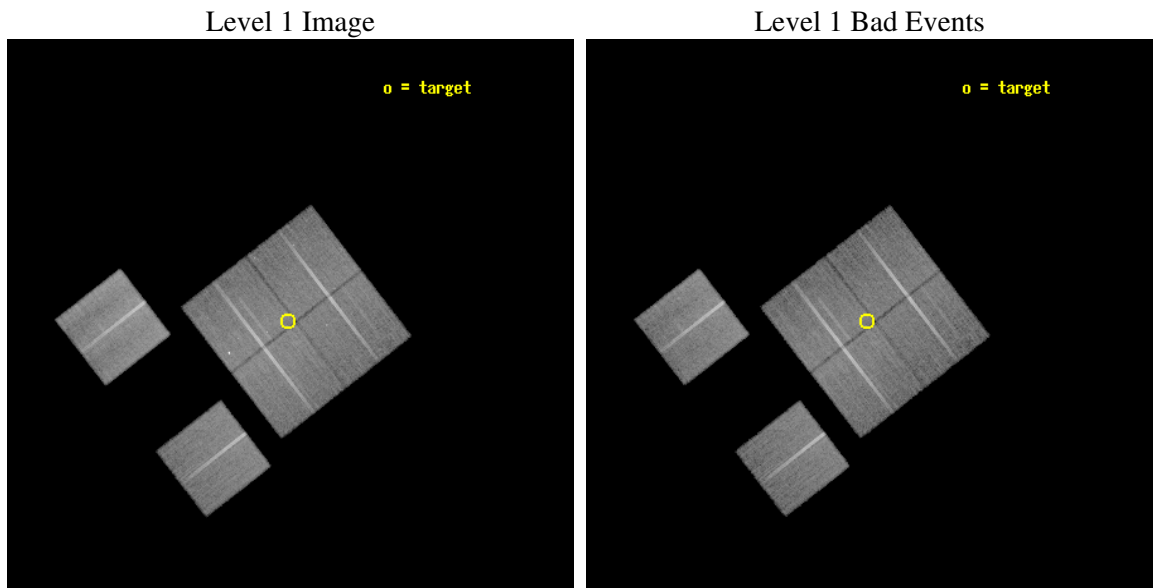
seq_num	900062
obs_id	2235
title	A COMBINED CHANDRA/XMM ATTACK ON THE ASTROPHYSICS OF THE HARD X-RAY BACKGROUND.
observer	Prof Ian McHardy
object	XMM 13HR - FIELD 4
dtcycle	0
cycle	P
ra_targ	203.585229
dec_targ	37.82658
ra_nom	203.57998561016
dec_nom	37.824264878138
roll_nom	232.20189216927
revision	2
ontime	30387.2000283
livetime	30002.419004567
ontime0	30377.477147564
ontime1	30383.959068045
ontime2	30387.2000283
ontime3	30387.2000283
ontime6	30383.959038138
ontime8	30383.959038138
l2events	122519



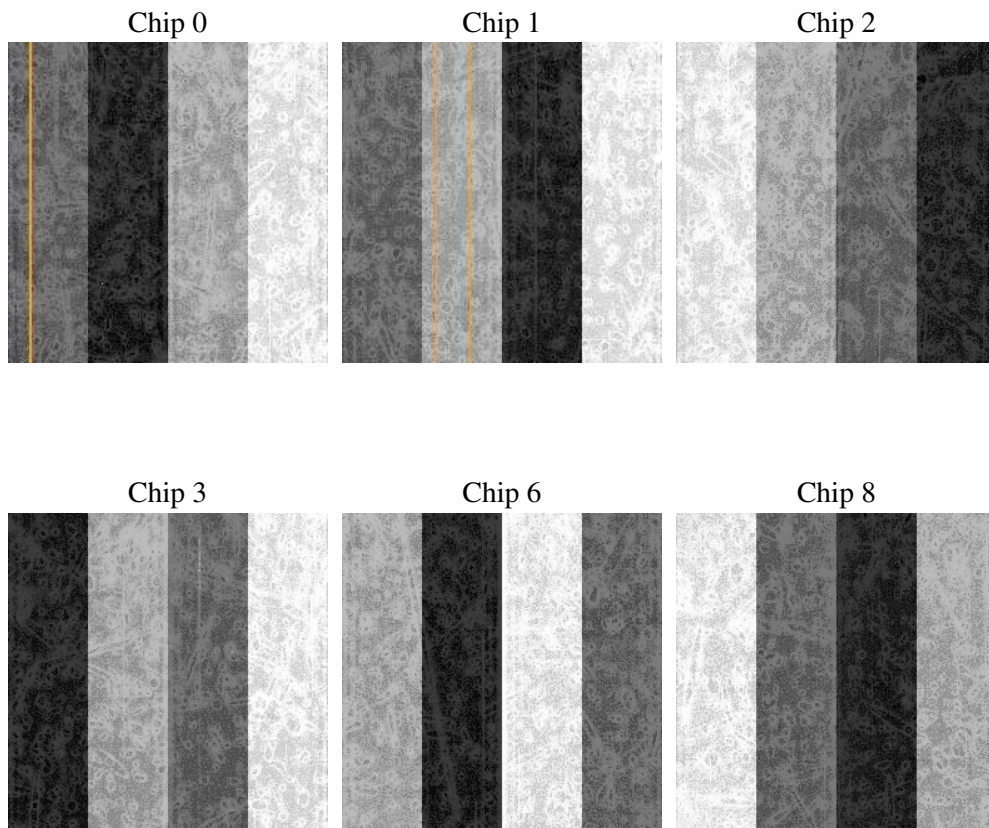
2 OBI

2.1 OBI

2.1.1 Images



2.1.2 Bias



2.1.3 Parameters

obi_num	1
ascdsver	7.6.9
caldsver	3.2.4
date	2006-11-28T05:32:59
revision	2

sched_exp_time	30425.000000
ontime	30394.089084148
ontime0	30384.366173491
ontime1	30390.848123893
ontime2	30394.089054227
ontime3	30394.089084148
ontime6	30390.848064065
ontime8	30390.848064065
l1events	1218508

2.1.4 Events

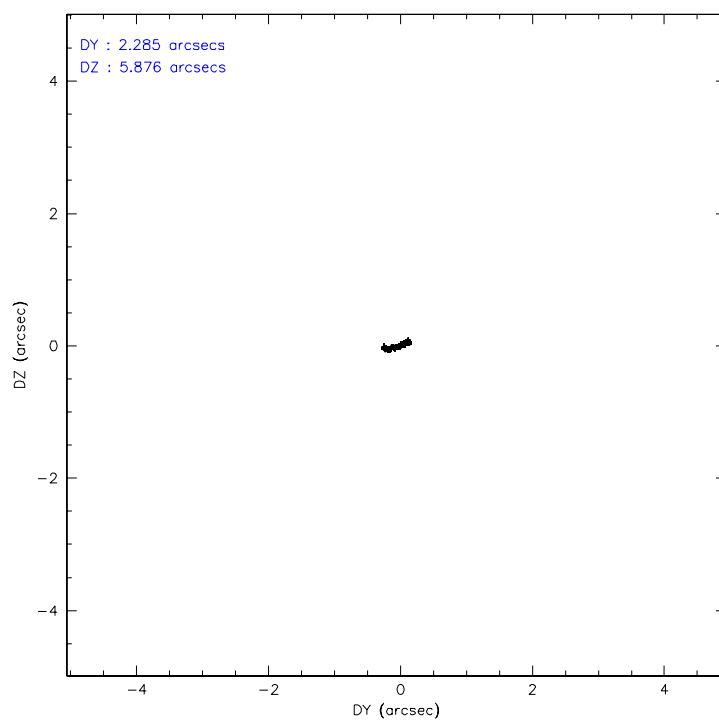
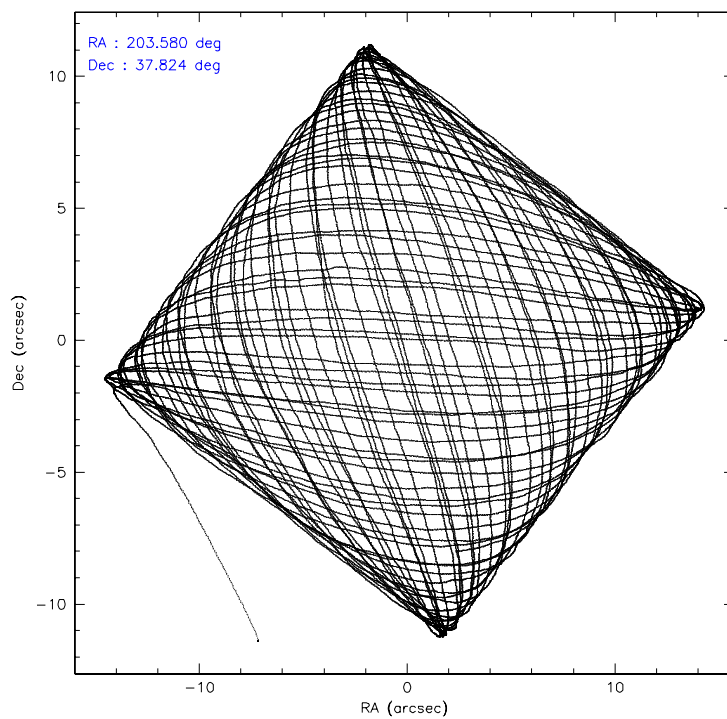
	ccd 0	ccd 1	ccd 2	ccd 3	ccd 6	ccd 8
level 1 events	179021	182006	200465	202496	195628	258892
rejected events	155715	157536	178746	177539	173253	206182
rejected %	86%	86%	89%	87%	88%	79%

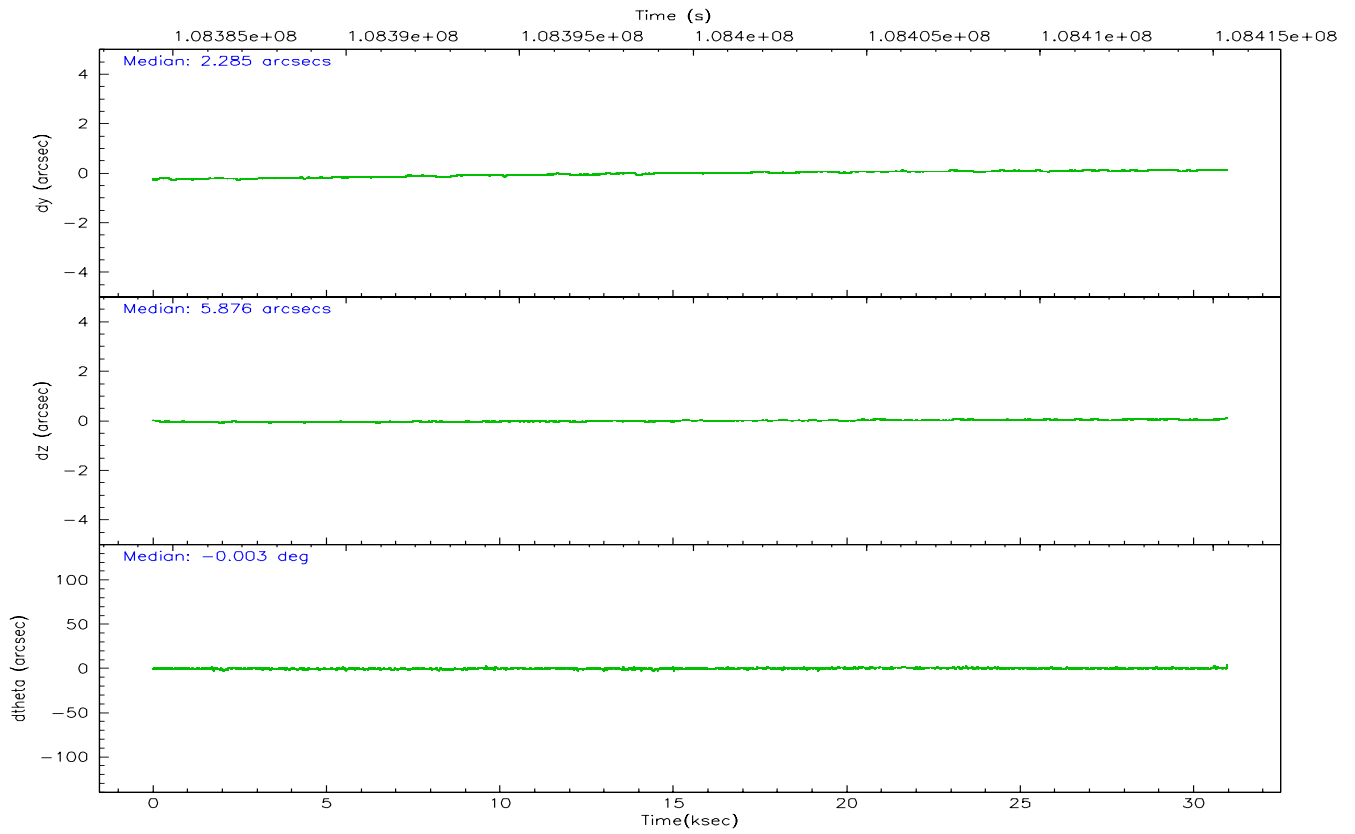
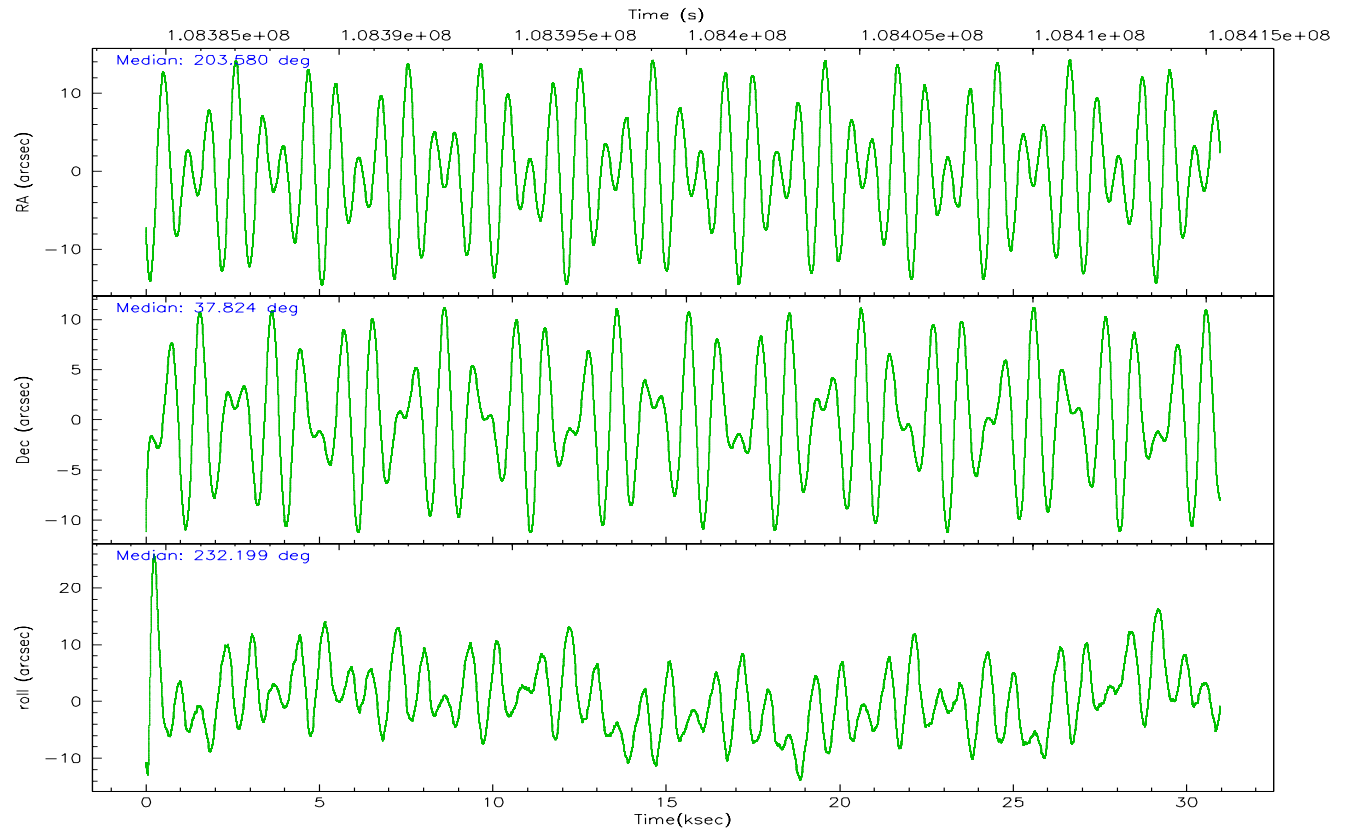
	ccd 0	ccd 1	ccd 2	ccd 3	ccd 6	ccd 8
grade 0 events	9868	10348	8724	11728	9087	16824
	5%	5%	4%	5%	4%	6%
grade 1 events	90	80	81	115	76	176
	0%	0%	0%	0%	0%	0%
grade 2 events	5047	5011	4854	4875	4590	11263
	2%	2%	2%	2%	2%	4%
grade 3 events	2253	2431	2160	2167	2212	5739
	1%	1%	1%	1%	1%	2%
grade 4 events	2029	2343	2091	2138	2146	5480
	1%	1%	1%	1%	1%	2%
grade 5 events	6868	7384	6640	7646	8101	10755
	3%	4%	3%	3%	4%	4%
grade 6 events	4113	4343	3893	4059	4345	13410
	2%	2%	1%	2%	2%	5%
grade 7 events	148753	150066	172022	169768	165071	195245
	83%	82%	85%	83%	84%	75%

2.2 Compared Parameters

Parameter	Planned	Actual	Parameter	Planned	Actual
Instrument	ACIS	ACIS	Obspar format version number	6	6
Detector	ACIS-012368	ACIS-012368	Obspar file type	PREDICTED	ACTUAL
Grating	NONE	NONE	Obspar update status	NONE	UPDATED
Data mode	VFAINT	VFAINT	Number of optional ACIS chips dropped	0	0
Observation mode	POINTING	POINTING	On-chip summing requested	N	N
Pointing RA	203.584668	203.5799856101565	Subarray requested	NONE	NONE
Pointing Dec	37.851460	37.82426487813831	Alternating exposures requested	N	N
Pointing Roll	231.990340	232.2018921692681	Primary exposure time	0.000000	3.2
SIM focus pos (mm)	-0.782348	-0.7809083437167272			
SIM defocus (mm)	0	0.001439871863259334			
SIM translation stage pos (mm)	-233.592463	-233.5874344608287			
SIM translation stage offset (mm)	0	-0.005018542100998502			
Observation start time	108384975.184000	108383826.68066			
Observation start date	2001-06-08T10:55:11	2001-06-08T10:37:06			
Observation end time	108415400.184000	108415534.03189			
Observation end date	2001-06-08T19:22:16	2001-06-08T19:25:34			
Read mode	TIMED	TIMED			

2.3 Aspect



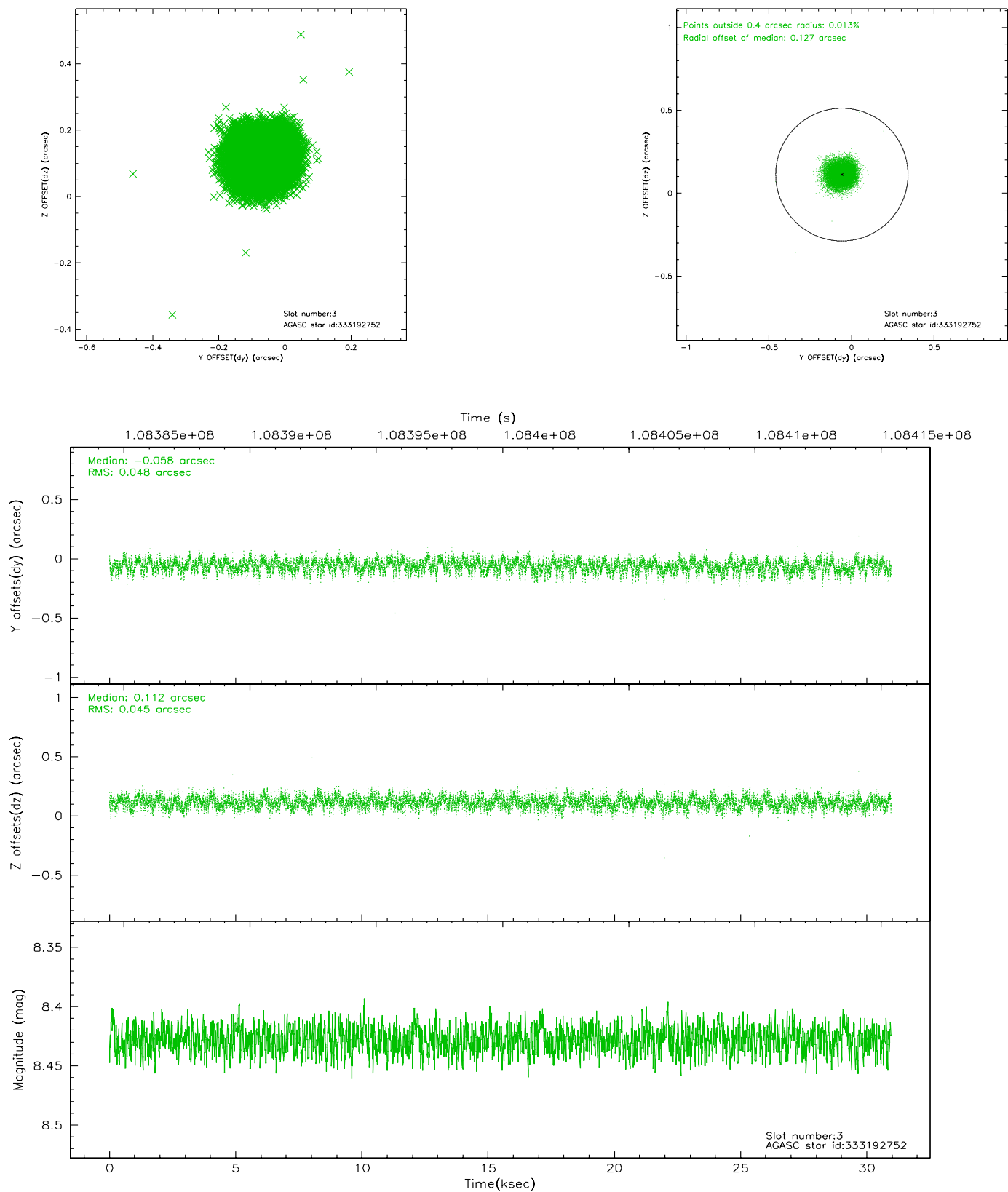


Slot Statistics

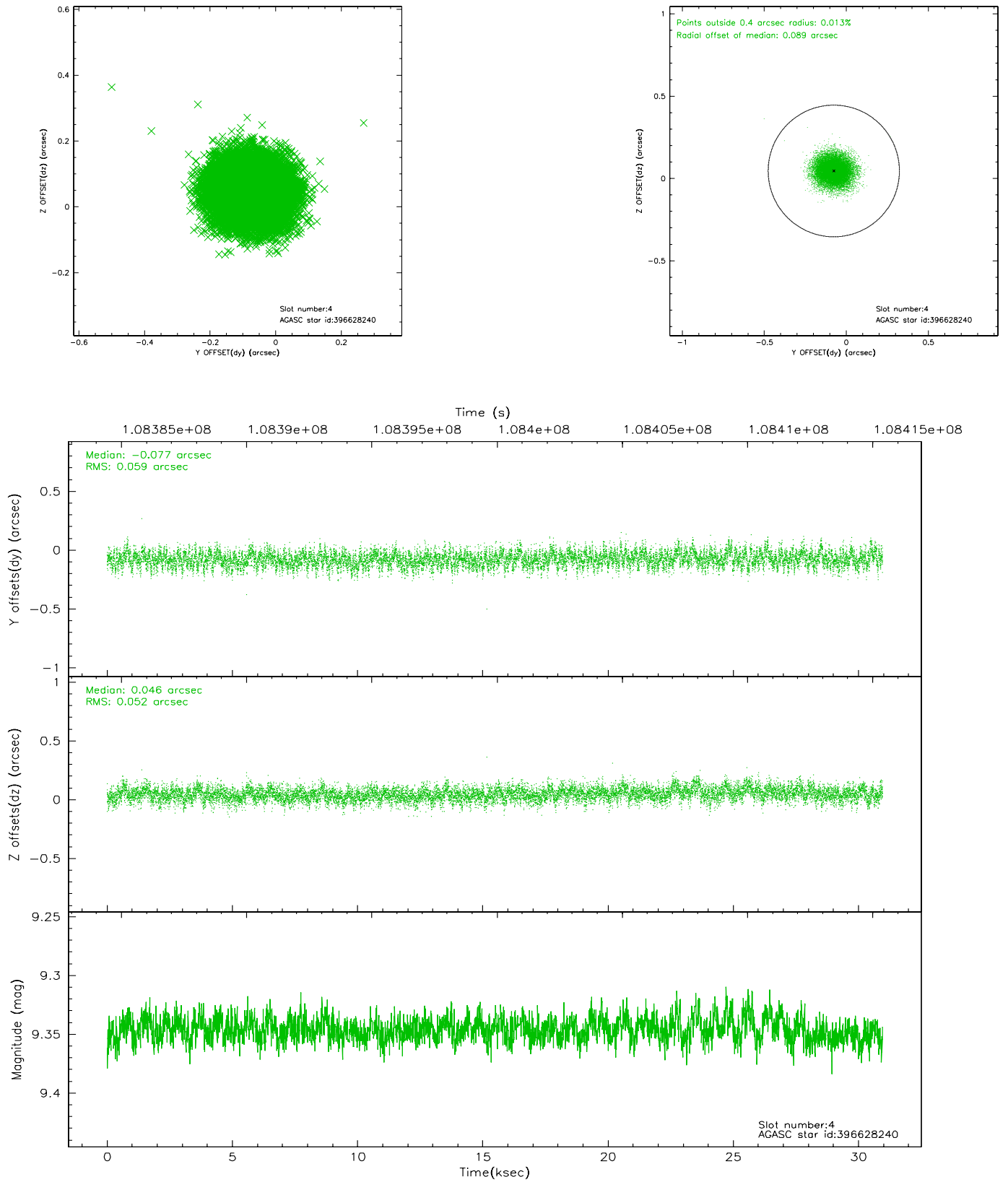
slot	status	id	mag	n_pts	med_dy	med_dz	dr1	dr2	ra	dec	mean_y	mean_z
0	FID	ACIS-I-2	7.15	7554	-0.023	-0.038	0.013	0.021	0.000000	0.000000	-756.63	-835.65
1	FID	ACIS-I-4	7.18	7552	-0.051	0.033	0.014	0.021	0.000000	0.000000	2157.35	1070.58
2	FID	ACIS-I-5	7.23	7552	-0.025	0.074	0.012	0.018	0.000000	0.000000	-1810.39	1068.52
3	GUIDE	333192752	8.43	15105	-0.058	0.112	0.071	0.111	203.839277	37.405848	814.45	1561.55
4	GUIDE	396628240	9.35	15105	-0.077	0.046	0.084	0.137	203.780849	38.306087	-1631.51	-571.02
5	GUIDE	396632024	9.52	14935	-0.015	-0.041	0.108	0.178	204.531533	37.981693	-2035.09	1820.10
6	GUIDE	396631416	9.62	15088	0.036	-0.117	0.086	0.141	203.523145	37.637364	715.07	337.00
7	GUIDE	396632368	9.64	15097	0.112	-0.001	0.100	0.159	203.634403	37.612976	589.05	640.92

2.4 Star Slots

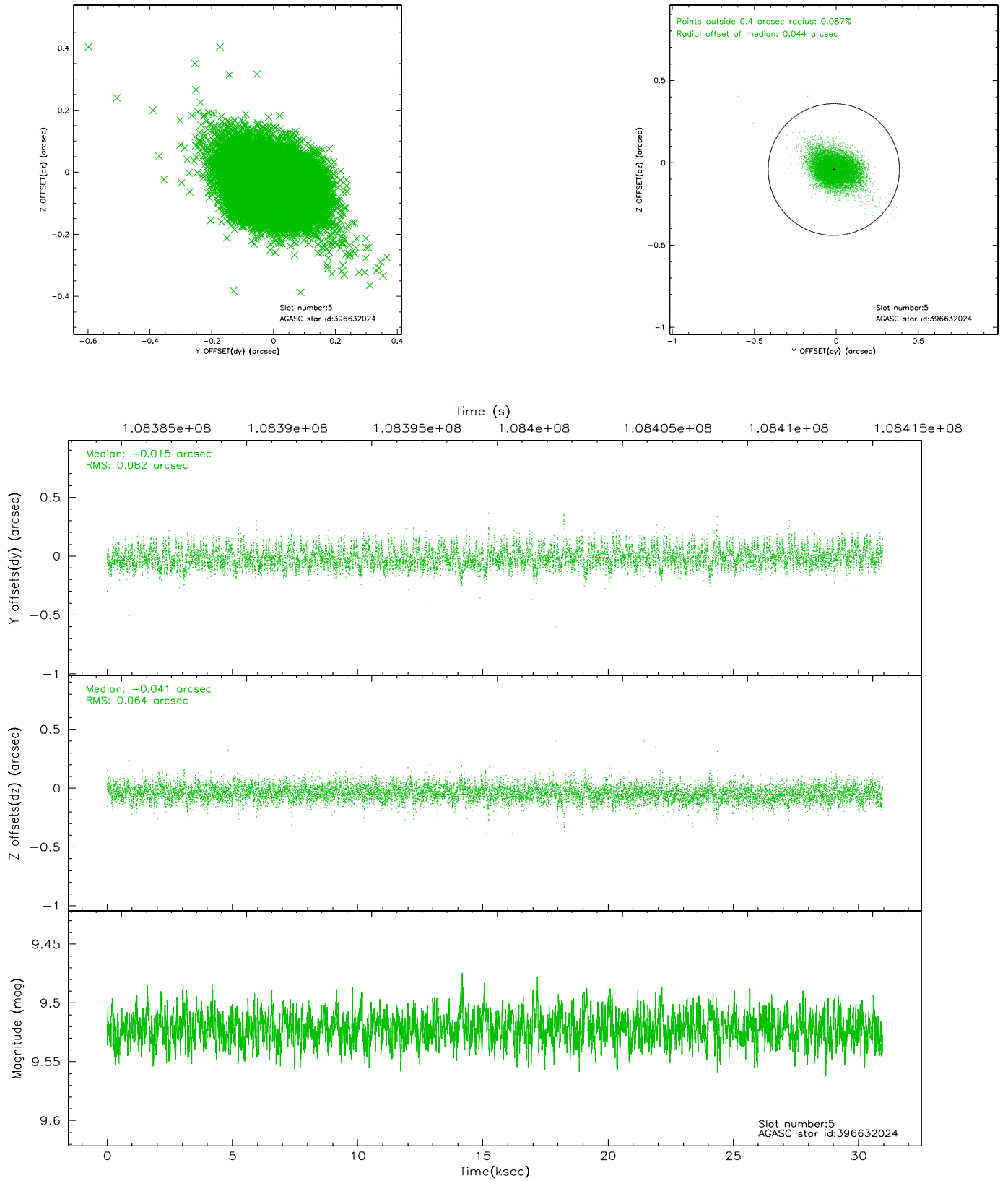
2.4.1 Slot 3



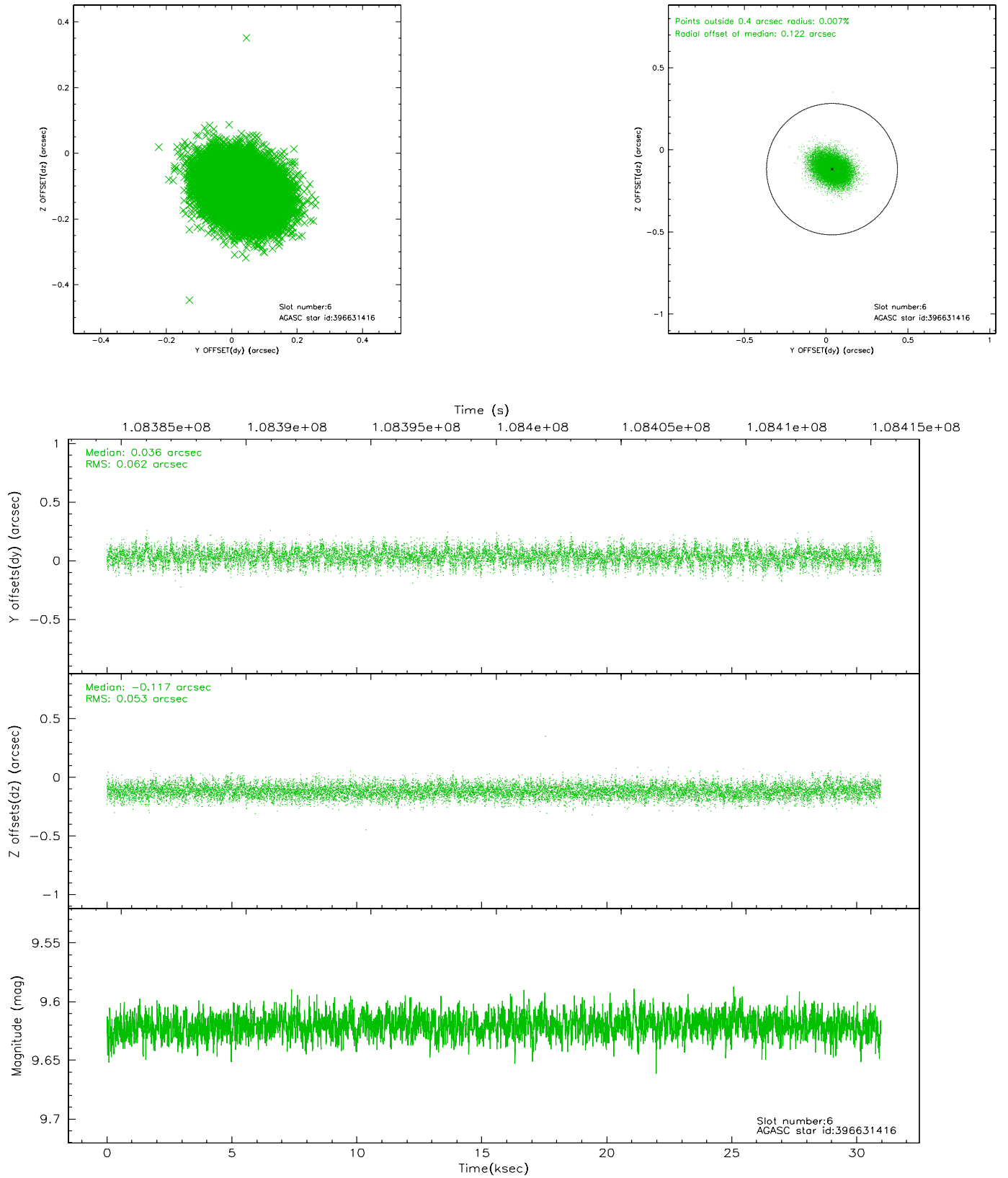
2.4.2 Slot 4



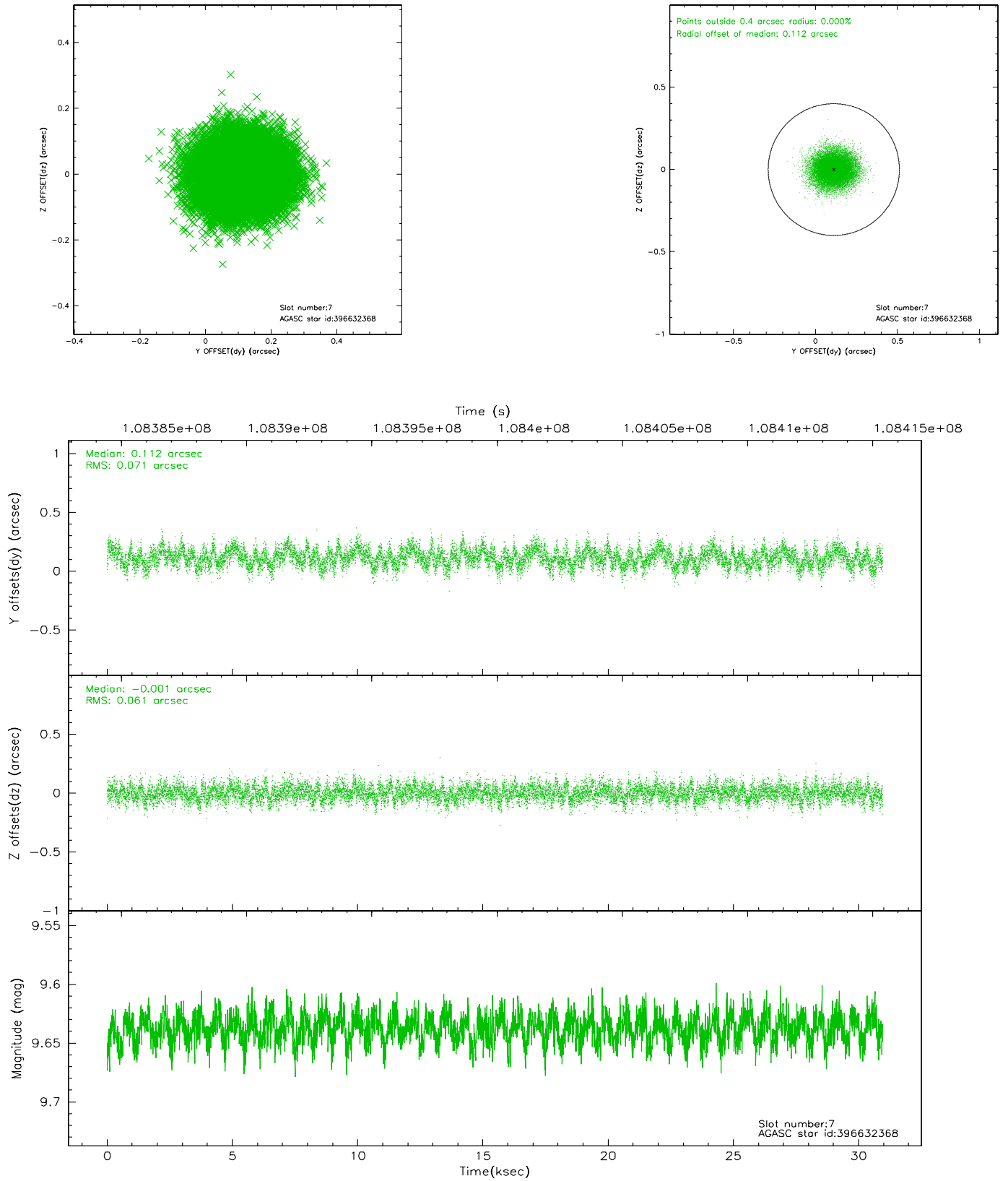
2.4.3 Slot 5



2.4.4 Slot 6

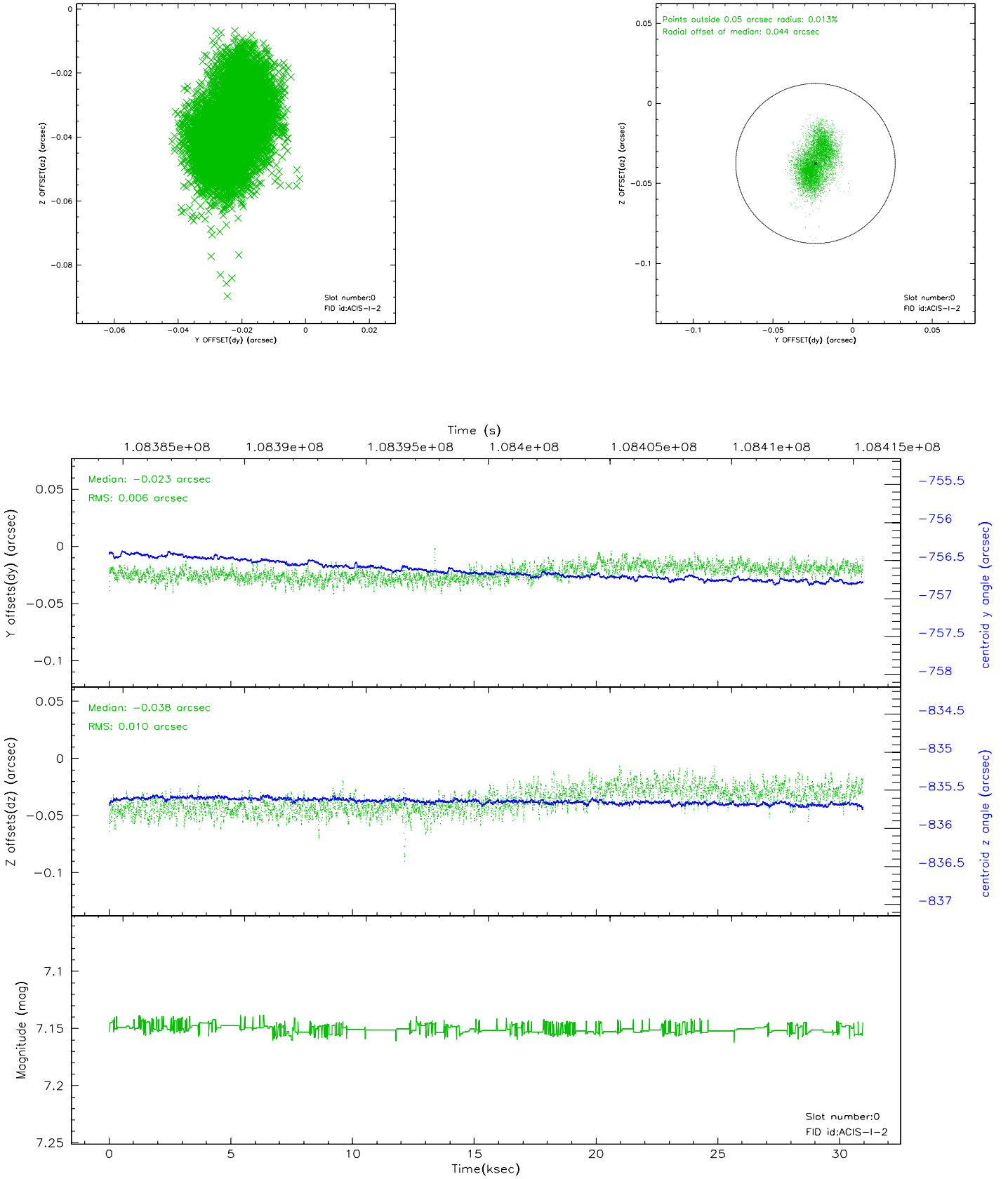


2.4.5 Slot 7

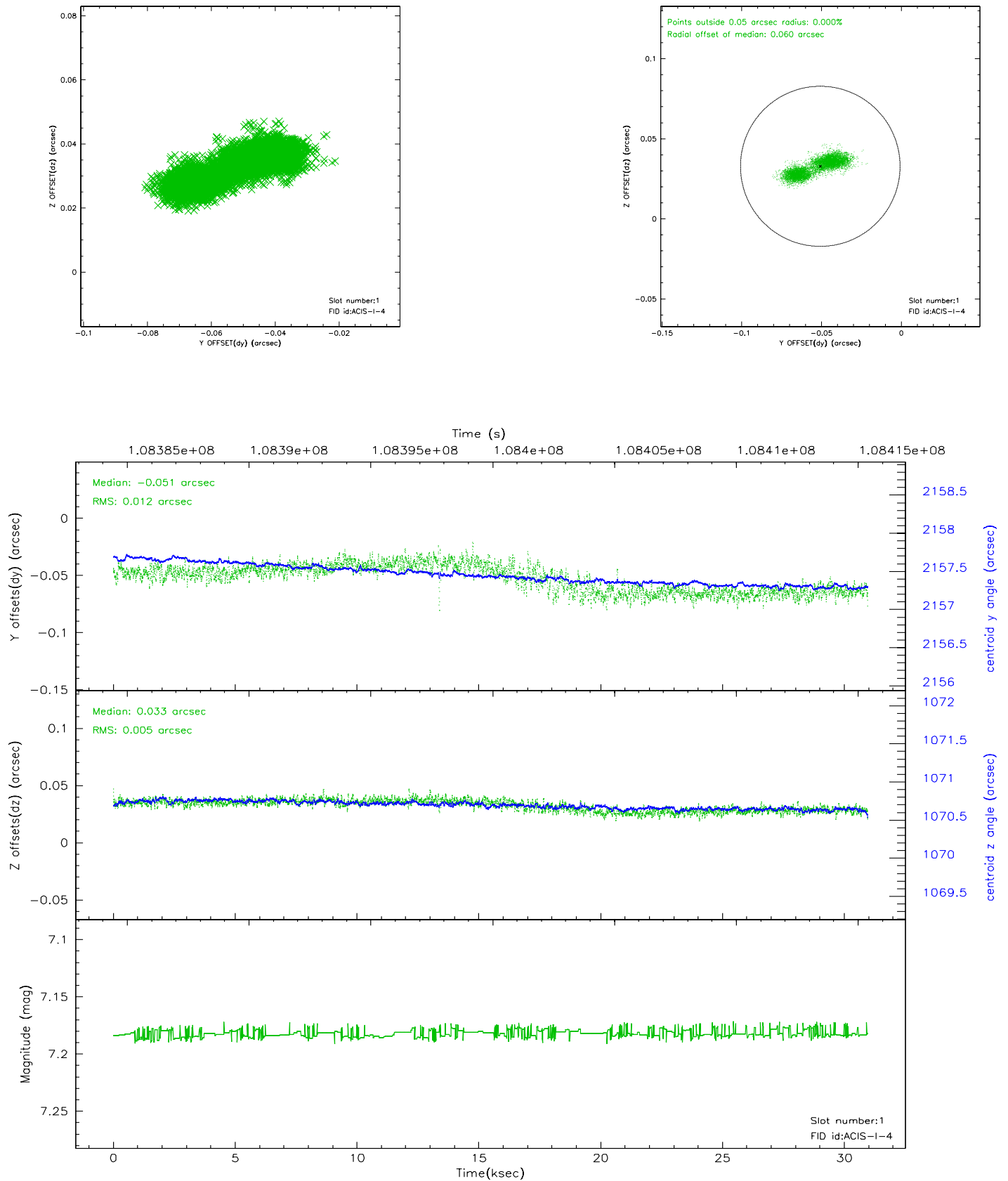


2.5 FID Slots

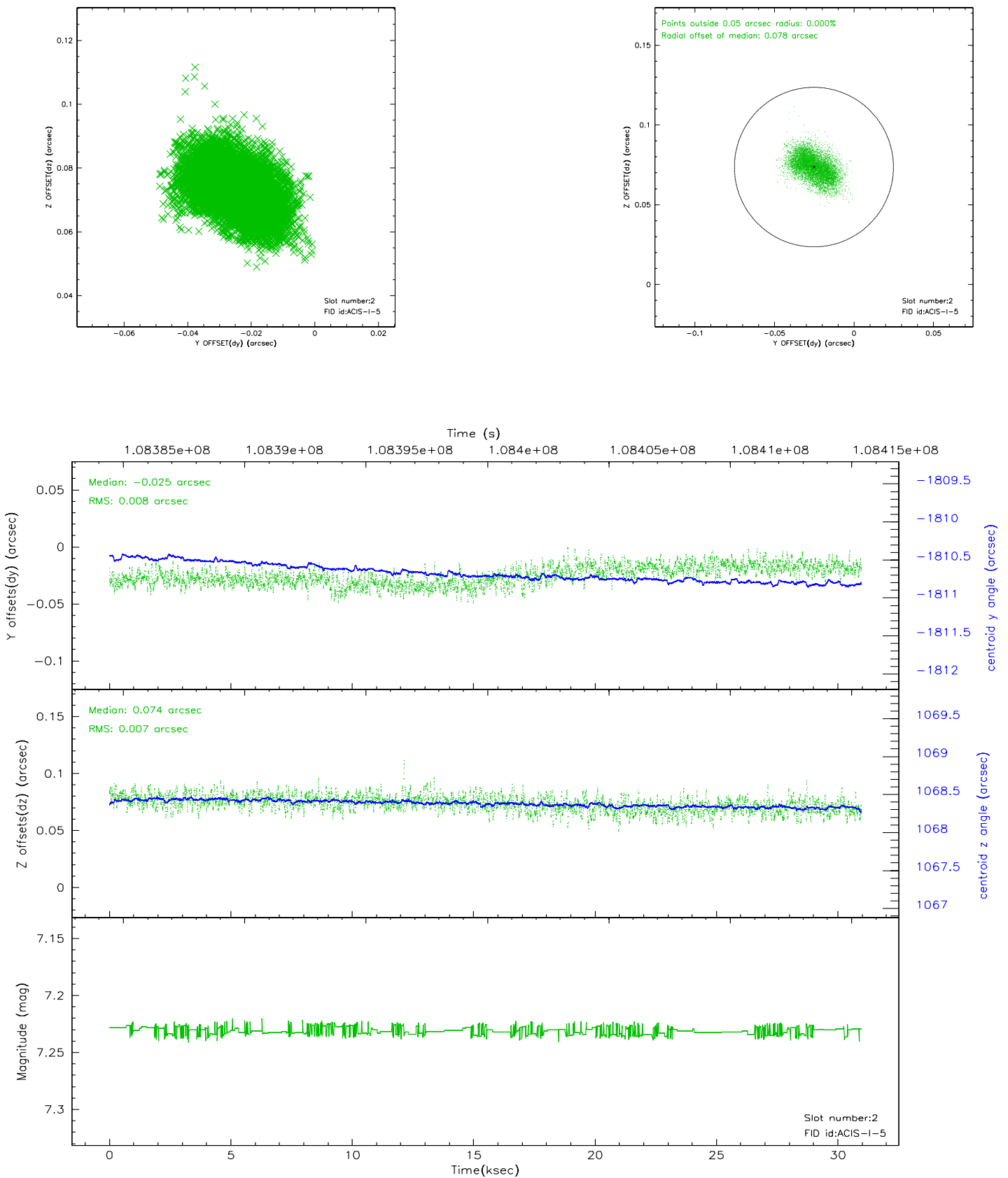
2.5.1 Slot 0



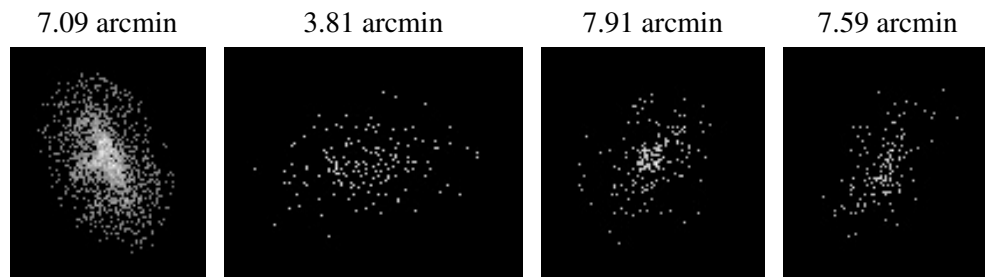
2.5.2 Slot 1



2.5.3 Slot 2



3 Point Sources



A Summary

A.1 Status

V&V Scientist	Beth Sundheim
V&V Date (YYYY-MM-DD)	2006.11.28
V&V Edition	1
V&V Disposition and Status	OK
V&V Charge Time	30.387

A.2 Comments