

V&V Reference Report

L2 ASCDS Version : 8.4.5

Observation 1689 - L2 Version 3
Chandra X-Ray Center

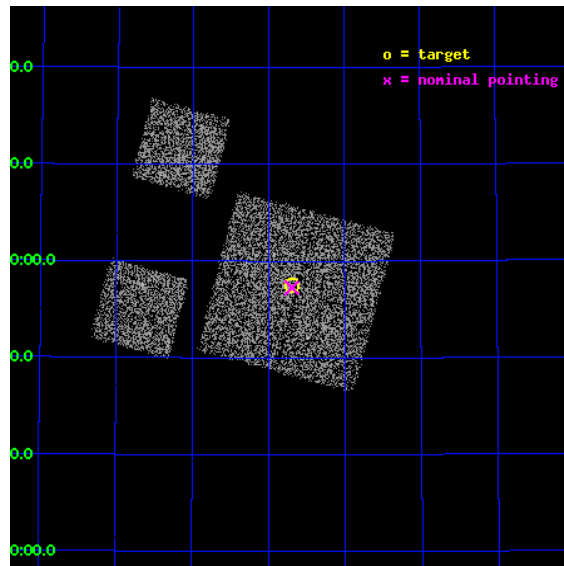
L2 Processing Date : Sep 20 2012

Contents

1	Front	2
2	OBI	3
2.1	OBI	3
2.1.1	Images	3
2.1.2	Bias	3
2.1.3	Parameters	4
2.1.4	Events	4
2.2	Compared Parameters	5
2.3	Aspect	6
2.4	Star Slots	9
2.4.1	Slot 3	9
2.4.2	Slot 4	10
2.4.3	Slot 5	11
2.4.4	Slot 6	12
2.4.5	Slot 7	13
2.5	FID Slots	14
2.5.1	Slot 0	14
2.5.2	Slot 1	15
2.5.3	Slot 2	16
A	Summary	17
A.1	Status	17
A.2	Comments	17

1 Front

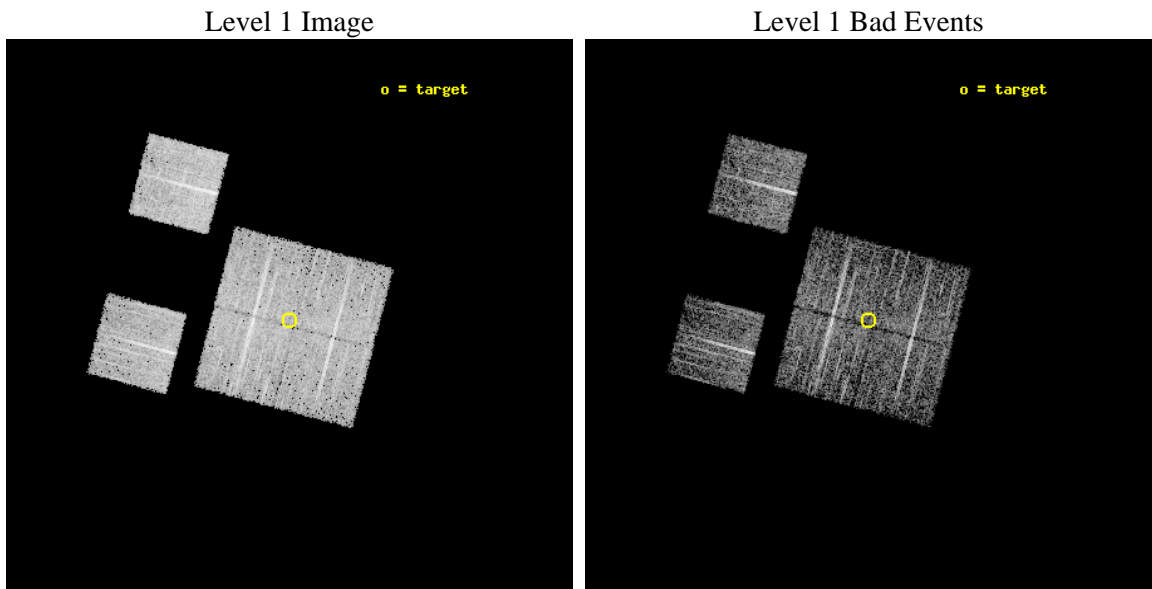
seq_num	900048	Sequence number
obs_id	1689	Observation id
title	LOCKMAN HOLE SHALLOW SURVEY	Proposal title
observer	Dr. Stephen Murray	Principal investigator
object	LOCKMAN HOLE #21	Source name
dtcycle	0	
cycle	P	events from which exps? Prim/Second/Both
ra_targ	163.675	Observer's specified target RA [deg]
dec_targ	57.958889	Observer's specified target Dec [deg]
ra_nom	163.67364490094	Nominal RA [deg]
dec_nom	57.954159206675	Nominal Dec [deg]
roll_nom	284.77434417789	Nominal Roll [deg]
revision	3	Processing version of data
ontime	4758.4000044167	Sum of GTIs [s]
livetime	4698.1462783963	Livetime [s]
ontime0	4758.4000044167	Sum of GTIs [s]
ontime1	4758.4000044167	Sum of GTIs [s]
ontime2	4758.4000044167	Sum of GTIs [s]
ontime3	4758.4000044167	Sum of GTIs [s]
ontime6	4758.4000044167	Sum of GTIs [s]
ontime8	4758.4000044167	Sum of GTIs [s]
l2events	18000	Number of level 2 events



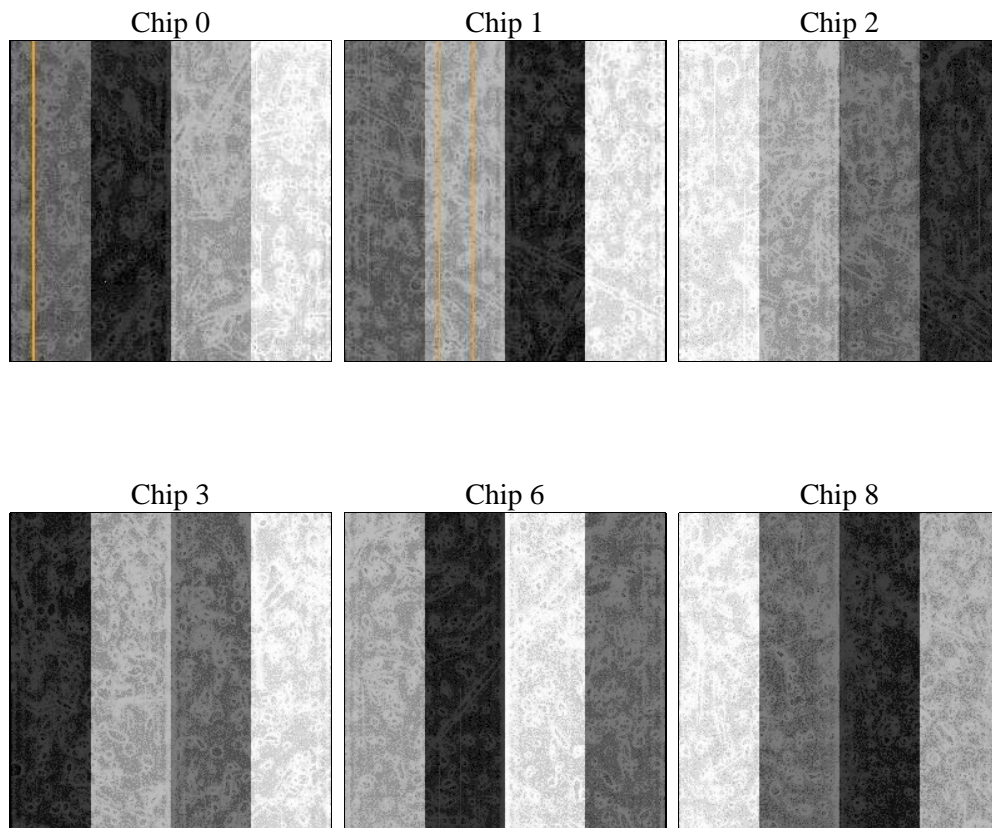
2 OBI

2.1 OBI

2.1.1 Images



2.1.2 Bias



2.1.3 Parameters

obi_num	0	Obi number	sched_exp_time	5000.000000	[s] Scheduled observation exposure time
ascdsver	8.4.5	Processing system revision	ontime	4758.4000044167	Sum of GTIs [s]
caldsver	4.5.1.1	 	ontime0	4758.4000044167	Sum of GTIs [s]
date	2012-09-20T12:45:05	Date and time of file creation	ontime1	4758.4000044167	Sum of GTIs [s]
revision	3	Processing version of data	ontime2	4758.4000044167	Sum of GTIs [s]
			ontime3	4758.4000044167	Sum of GTIs [s]
			ontime6	4758.4000044167	Sum of GTIs [s]
			ontime8	4758.4000044167	Sum of GTIs [s]
			l1events	192570	Number of level 1 events

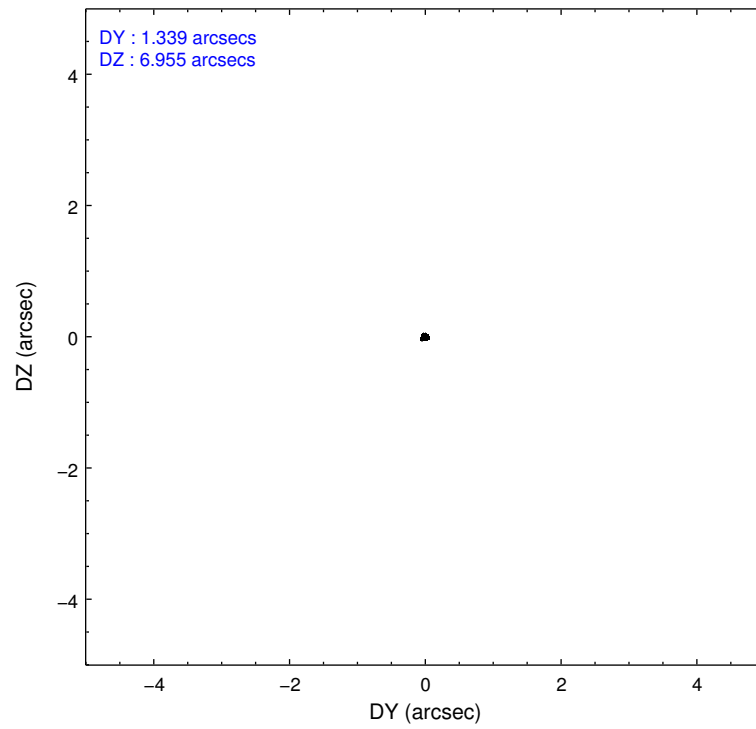
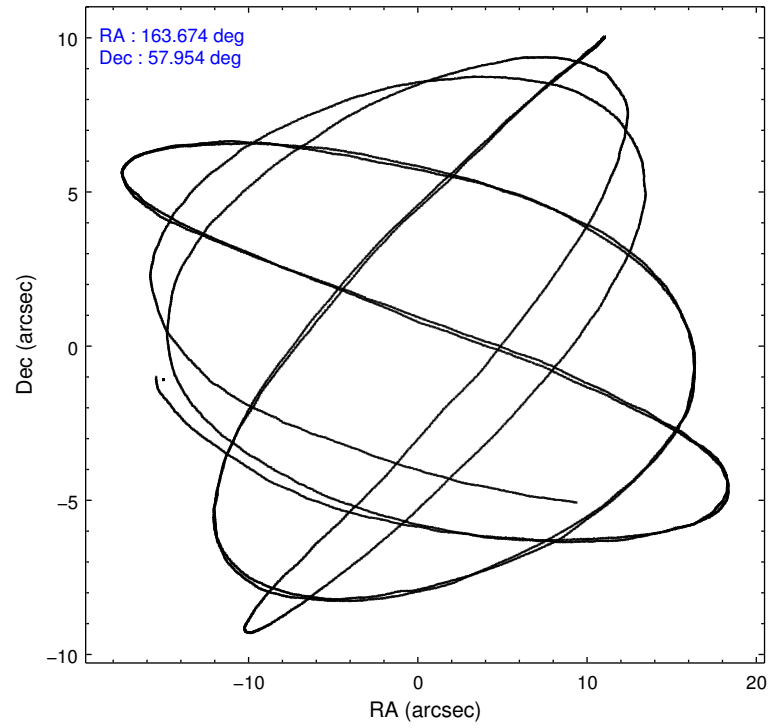
2.1.4 Events

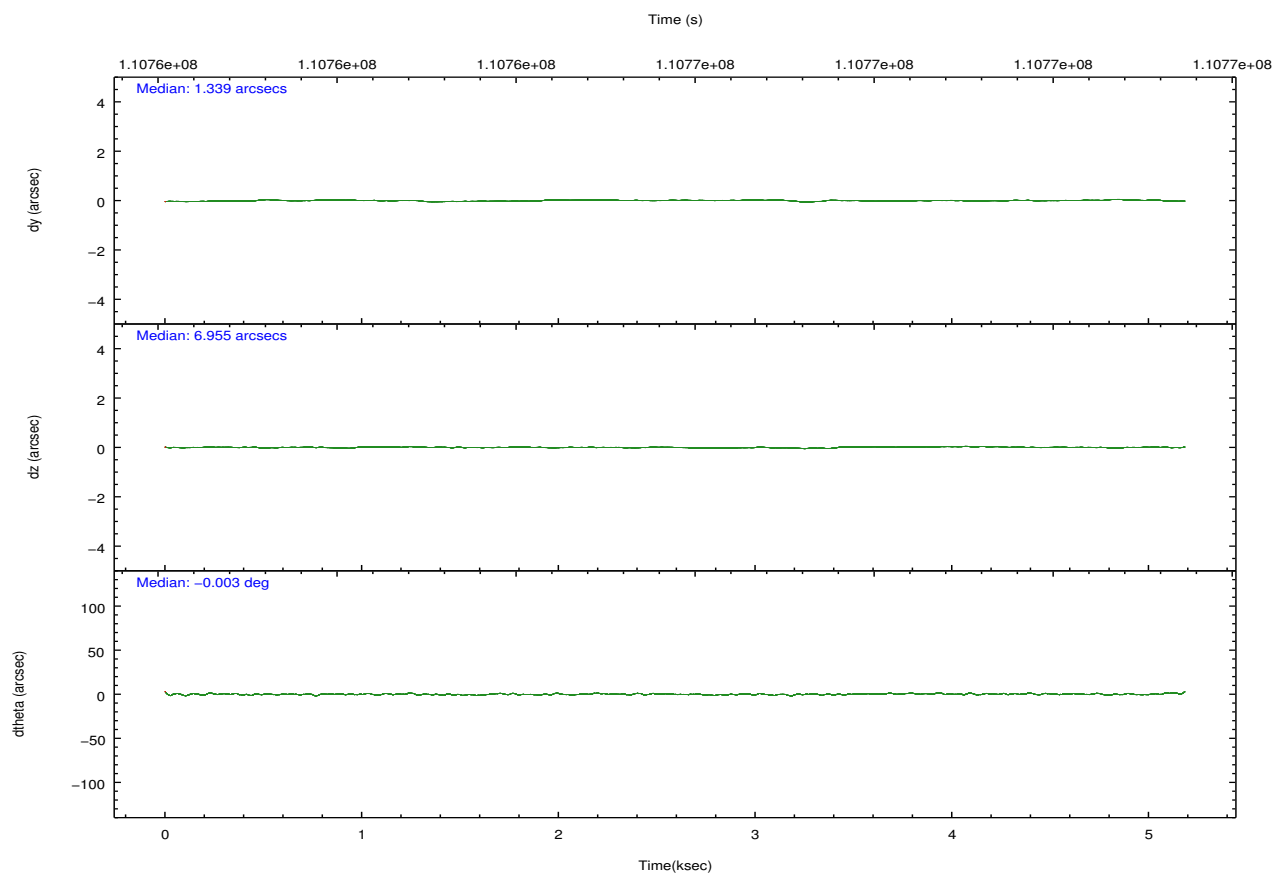
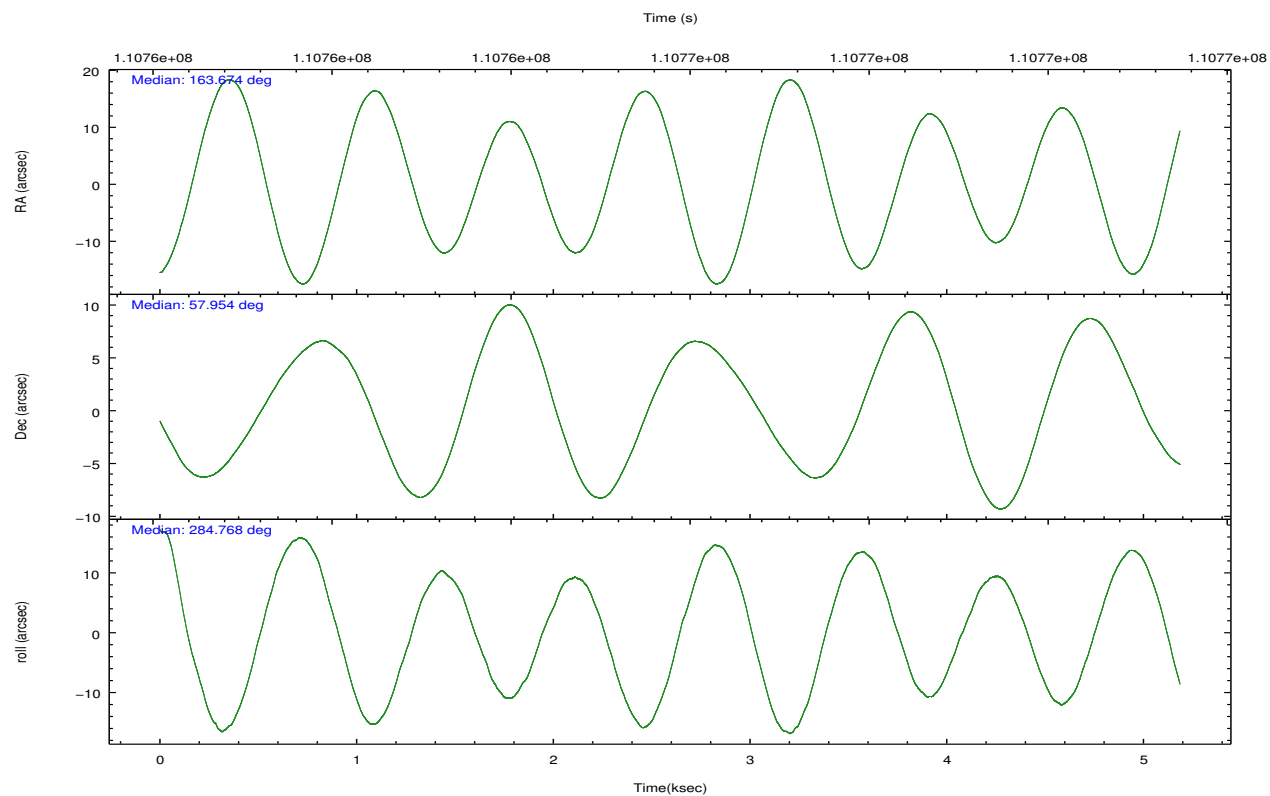
	ccd 0	ccd 1	ccd 2	ccd 3	ccd 6	ccd 8		ccd 0	ccd 1	ccd 2	ccd 3	ccd 6	ccd 8
level 1 events	27280	29527	32489	30745	30759	41770	grade 0 events	1468	1395	1493	1465	1335	2453
rejected events	23765	25910	29030	27356	27361	33924		5%	4%	4%	4%	4%	5%
rejected %	87%	87%	89%	88%	88%	81%	grade 1 events	17	14	19	17	15	25
								0%	0%	0%	0%	0%	0%
							grade 2 events	745	778	723	656	689	1664
								2%	2%	2%	2%	2%	3%
							grade 3 events	364	377	308	327	356	874
								1%	1%	0%	1%	1%	2%
							grade 4 events	337	353	326	337	293	799
								1%	1%	1%	1%	0%	1%
							grade 5 events	1042	1209	1093	1230	1283	1631
								3%	4%	3%	4%	4%	3%
							grade 6 events	614	717	615	607	729	2060
								2%	2%	1%	1%	2%	4%
							grade 7 events	22693	24684	27912	26106	26059	32264
								83%	83%	85%	84%	84%	77%

2.2 Compared Parameters

Parameter	Planned	Actual	Parameter	Planned	Actual
Instrument	ACIS	ACIS	Obspar format version number	7	7
Detector	ACIS-012368	ACIS-012368	Obspar file type	PREDICTED	ACTUAL
Grating	NONE	NONE	Obspar update status	NONE	UPDATED
Data mode	FAINT	FAINT	Number of optional ACIS chips dropped	0	0
Observation mode	POINTING	POINTING	On-chip summing requested	N	N
[deg] Pointing RA	163.637245	163.6736449009434	Subarray requested	NONE	NONE
[deg] Pointing Dec	57.973662	57.95415920667507	Alternating exposures requested	N	N
[deg] Pointing Roll	284.596521	284.7743441778919	[s] Primary exposure time	0.000000	3.2
[mm] SIM focus pos	-0.782348	-0.7809083437167272			
[mm] SIM defocus	0	0.001439871863259334			
[mm] SIM translation stage pos	-233.592463	-233.5874344608287			
[mm] SIM translation stage offset	0	-0.005018542100998502			
[s] Observation start time (MET)	110763483.184000	110763106.99848			
Observation start date	2001-07-05T23:36:59	2001-07-05T23:31:46			
[s] Observation end time (MET)	110768483.184000	110768616.8862			
Observation end date	2001-07-06T01:00:19	2001-07-06T01:03:36			
Read mode	TIMED	TIMED			

2.3 Aspect



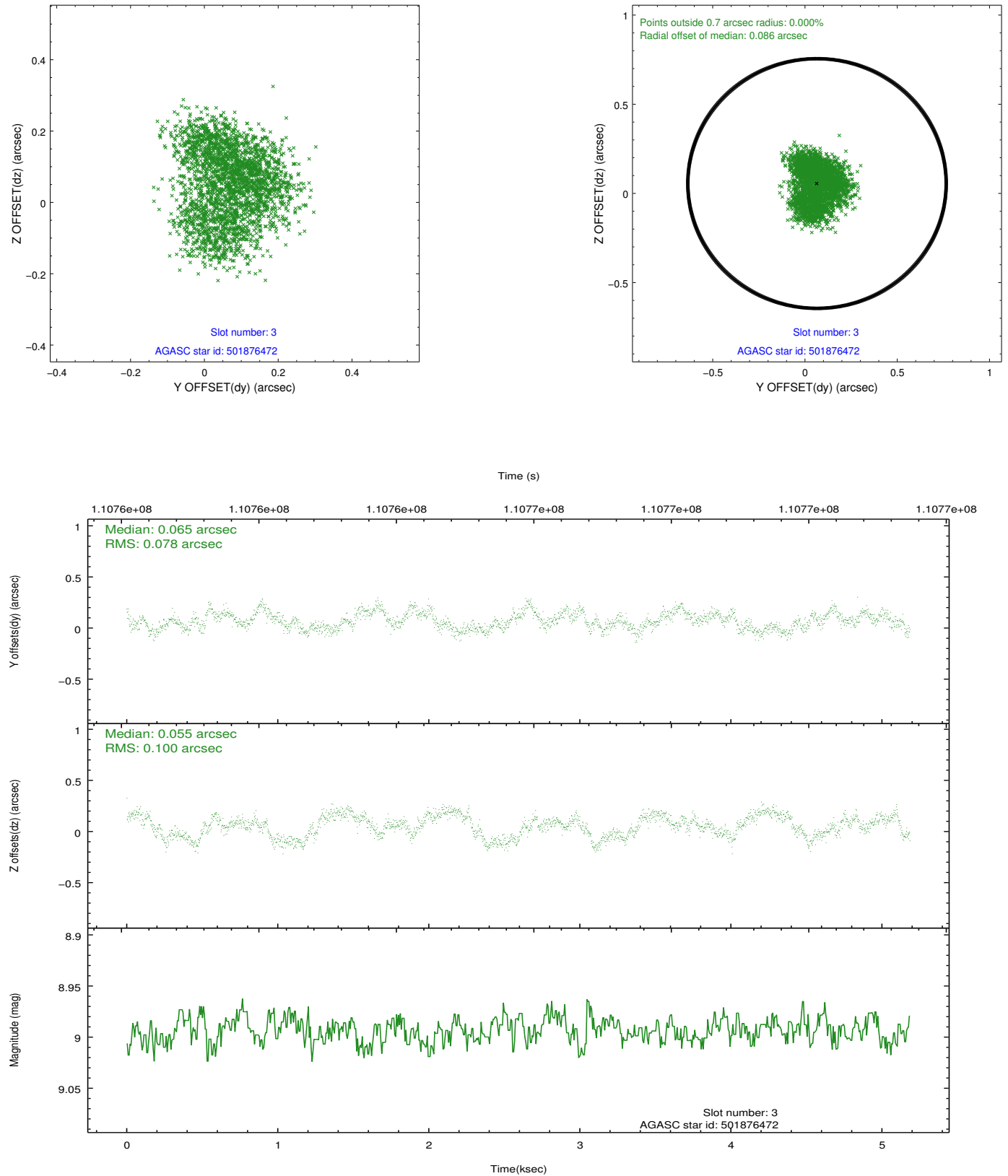


Slot Statistics

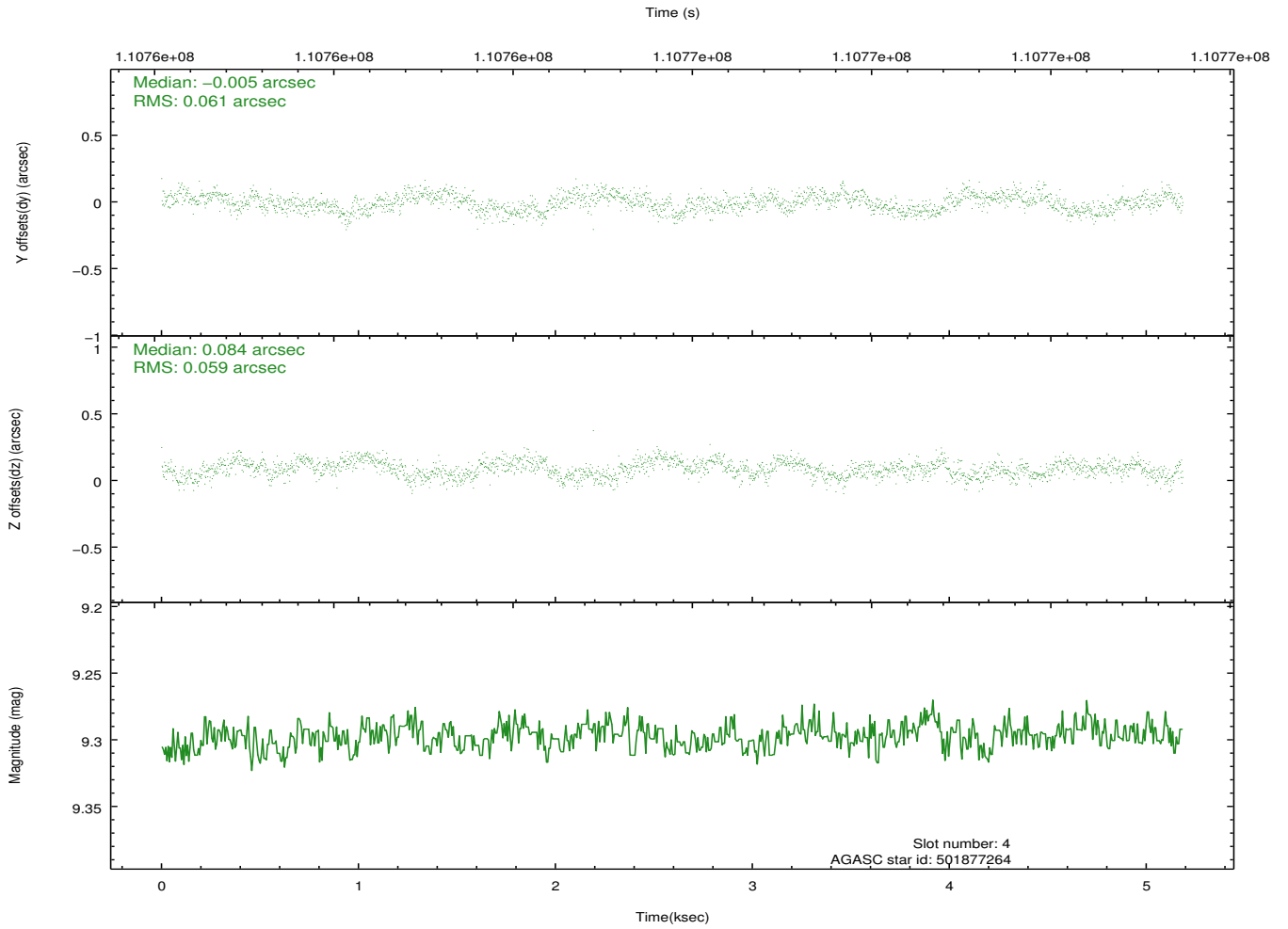
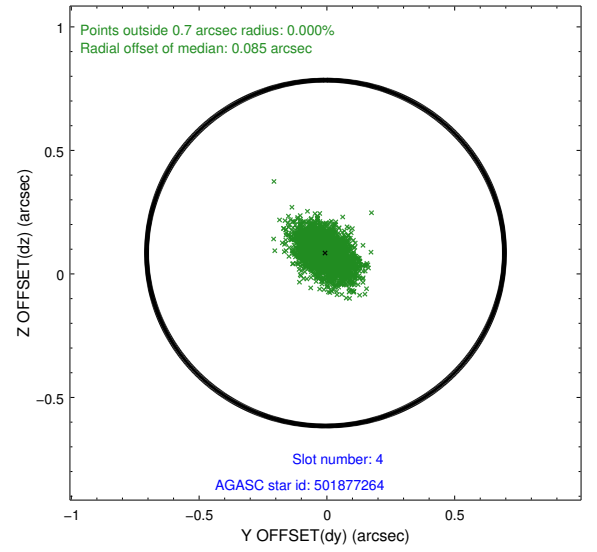
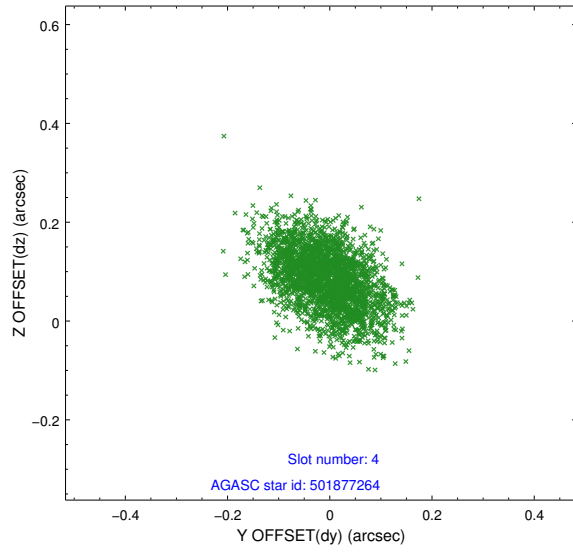
slot	status	id	mag	n_pts	med_dy	med_dz	dr1	dr2	ra	dec	mean_y	mean_z
0	FID	ACIS-I-2	7.15	1265	-0.035	-0.070	0.009	0.016	0.000000	0.000000	-755.69	-836.79
1	FID	ACIS-I-4	7.18	1265	-0.049	0.047	0.005	0.010	0.000000	0.000000	2157.80	1068.95
2	FID	ACIS-I-5	7.23	1265	-0.016	0.092	0.009	0.016	0.000000	0.000000	-1808.02	1068.12
3	GUIDE	501876472	8.99	2530	0.065	0.055	0.140	0.204	163.621724	57.867447	362.86	-125.72
4	GUIDE	501877264	9.30	2526	-0.005	0.084	0.090	0.146	163.254394	57.702218	758.49	-958.78
5	GUIDE	501875376	6.73	2530	-0.023	-0.118	0.068	0.104	164.111621	57.502963	1868.42	460.80
6	GUIDE	501874936	9.94	2530	0.054	-0.042	0.124	0.194	164.170577	58.432800	-1349.25	1389.75
7	GUIDE	501877056	9.68	2528	-0.094	0.031	0.117	0.187	164.433826	58.166965	-301.45	1641.30

2.4 Star Slots

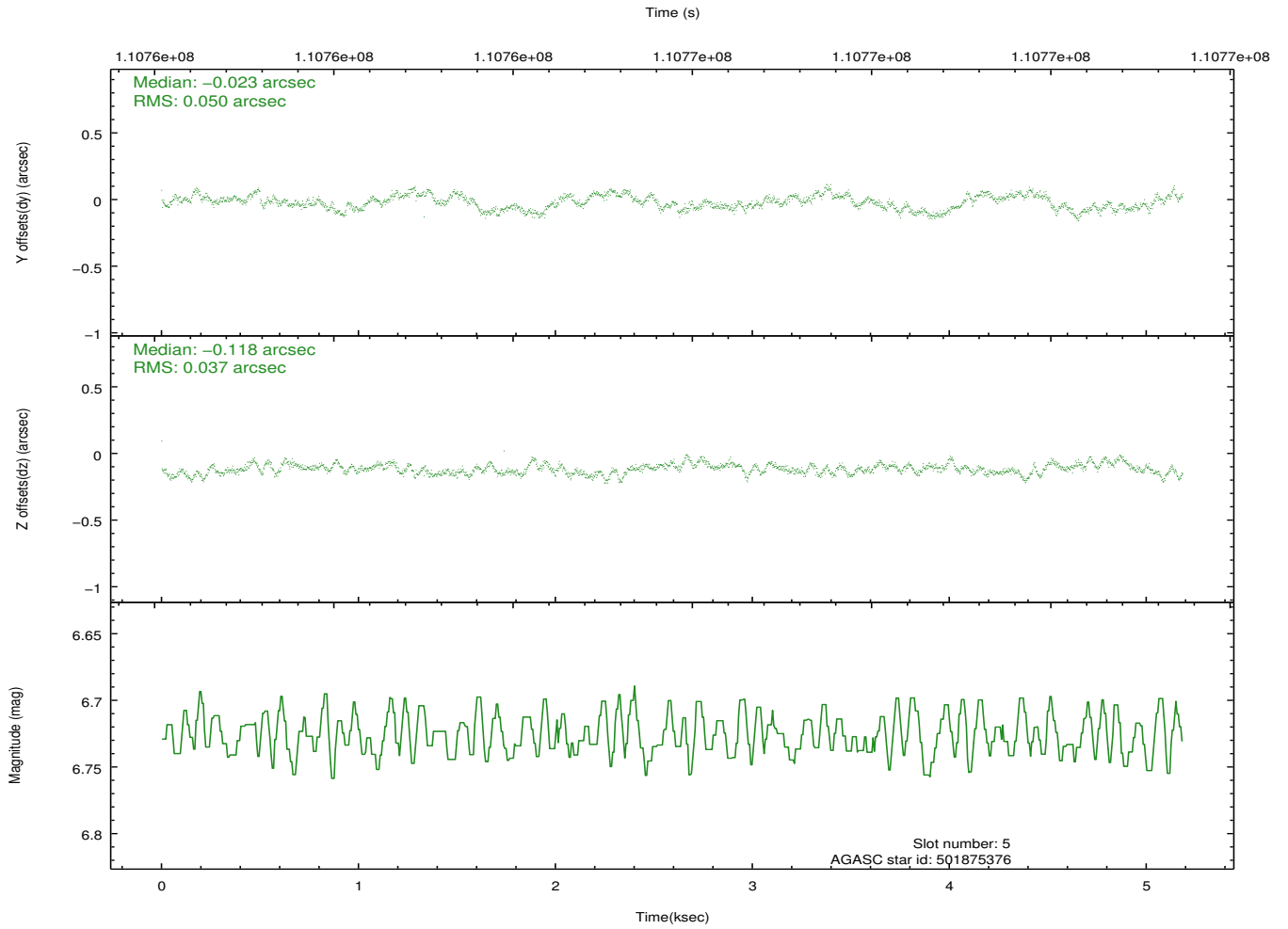
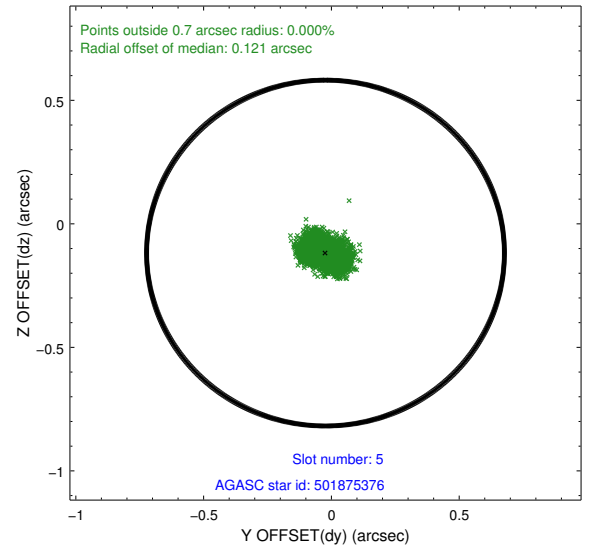
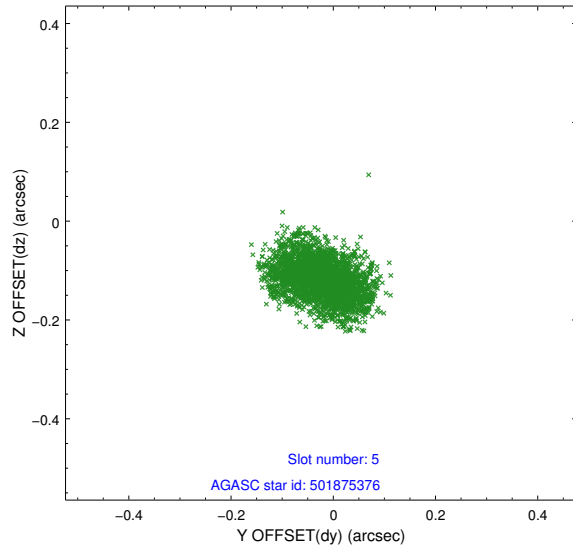
2.4.1 Slot 3



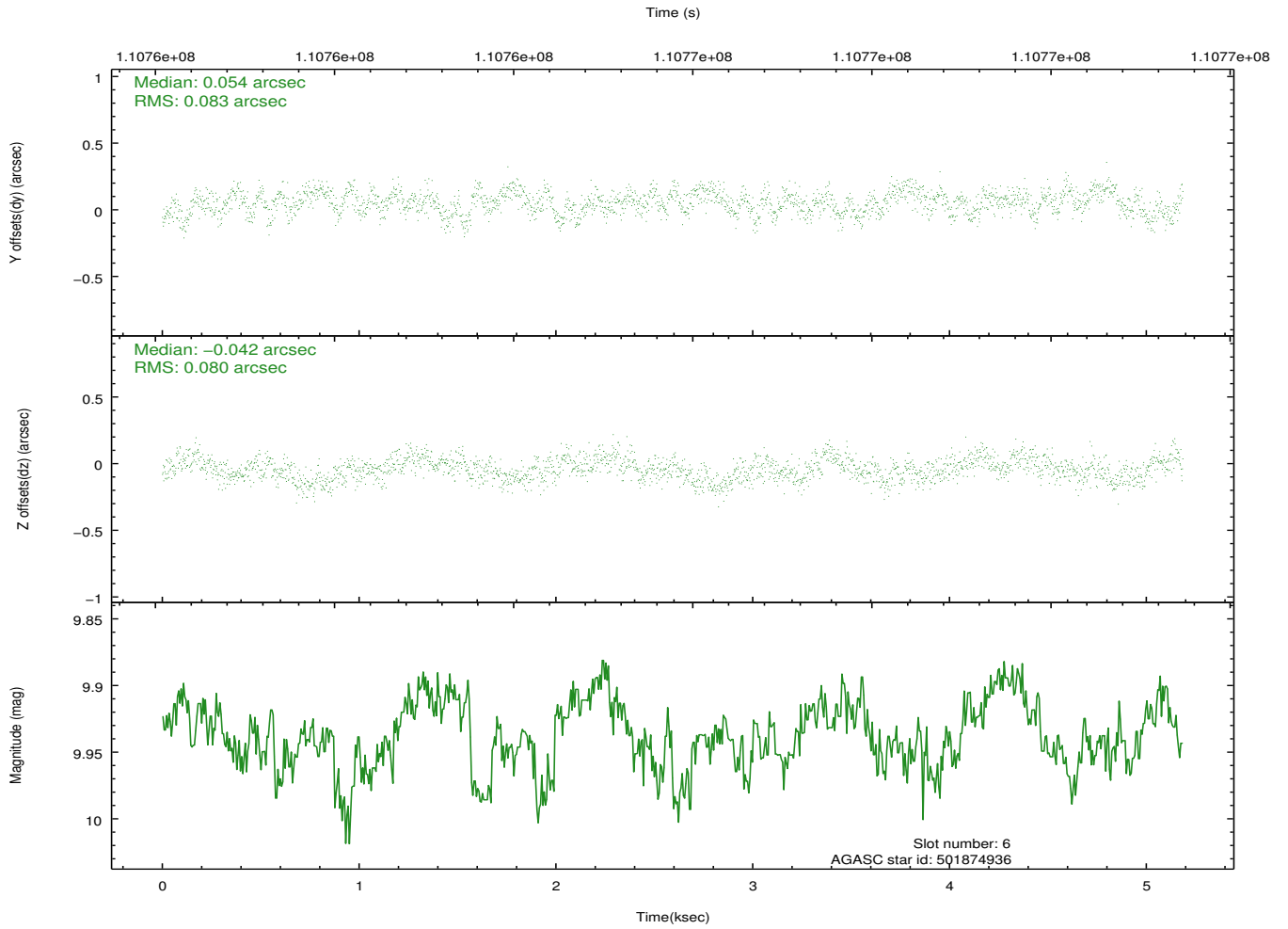
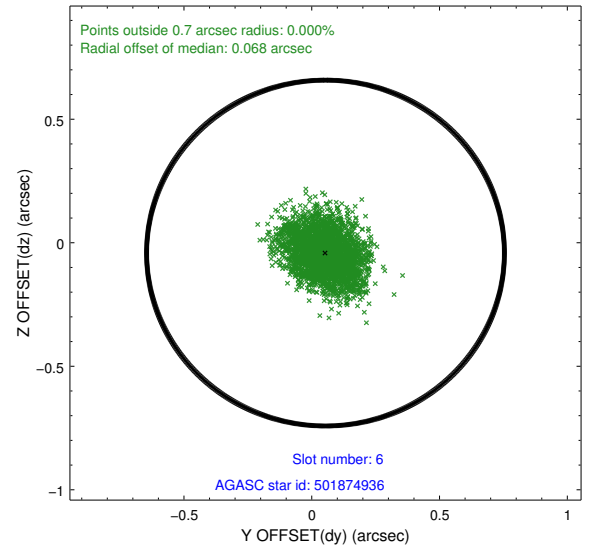
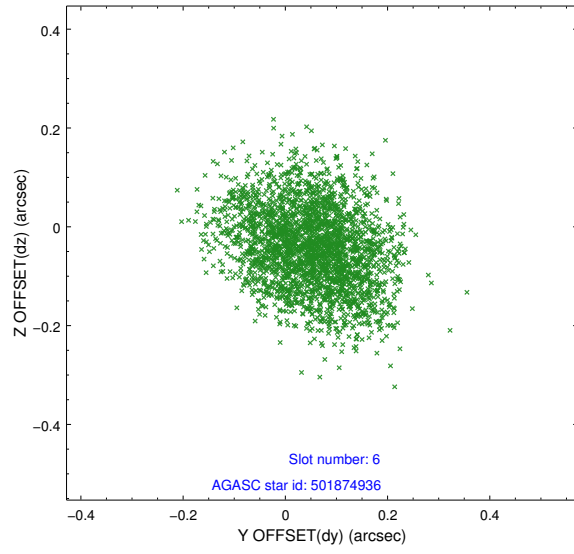
2.4.2 Slot 4



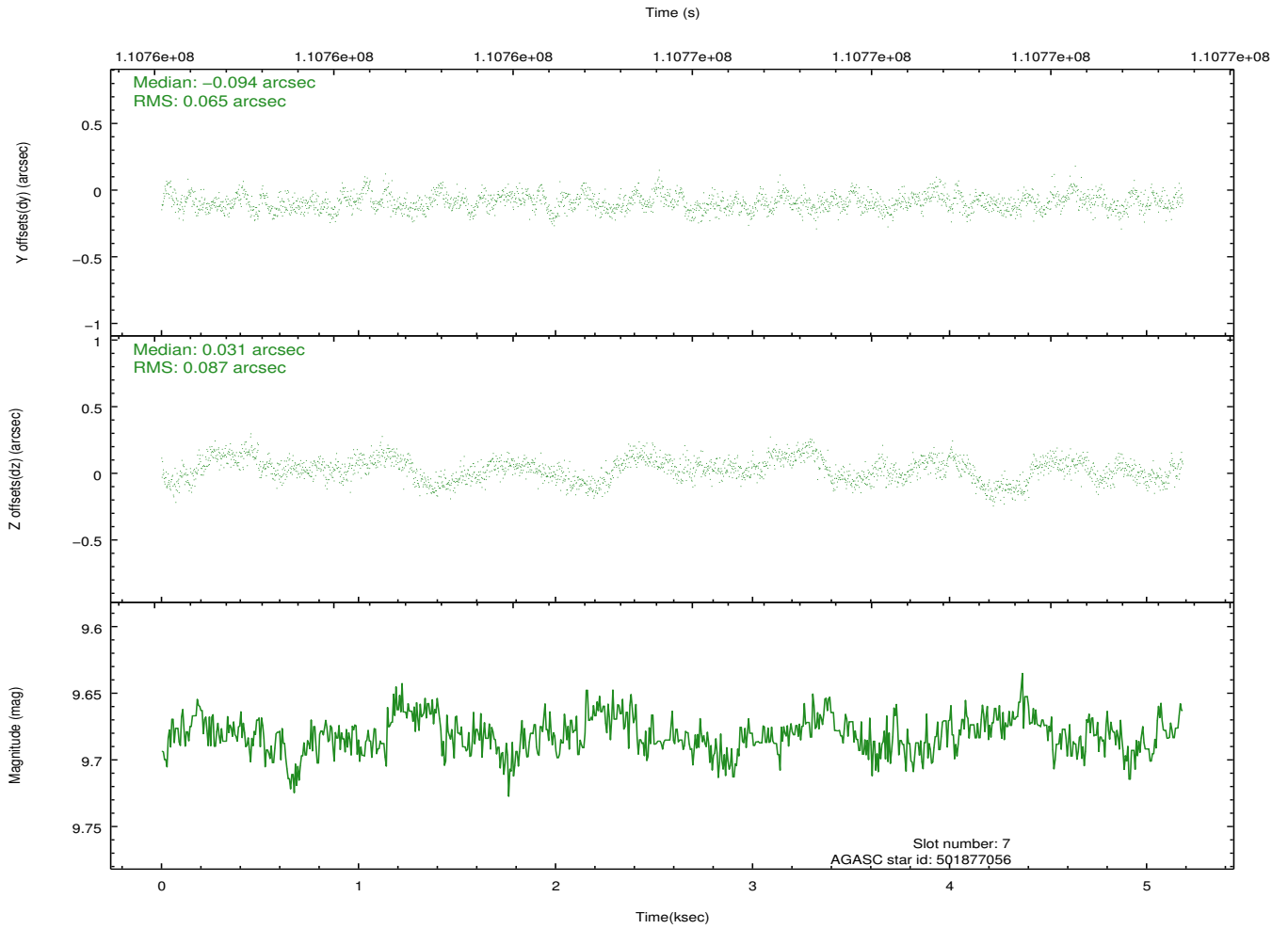
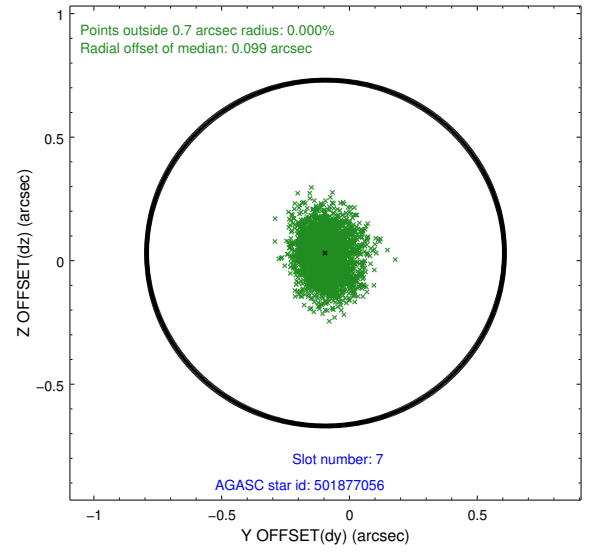
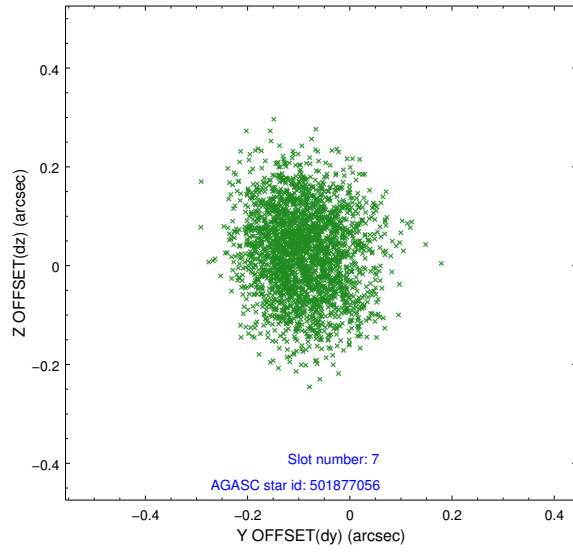
2.4.3 Slot 5



2.4.4 Slot 6

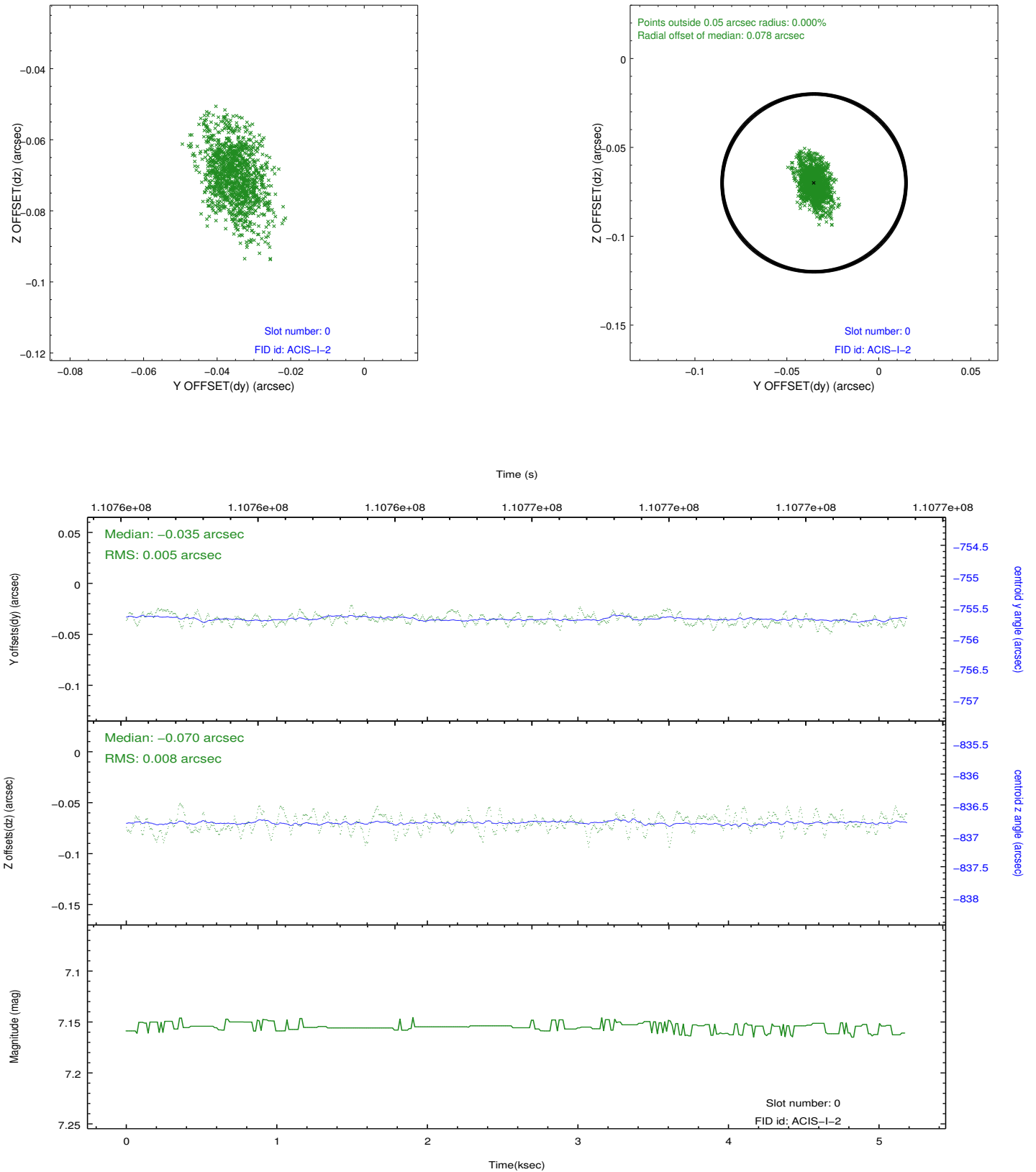


2.4.5 Slot 7

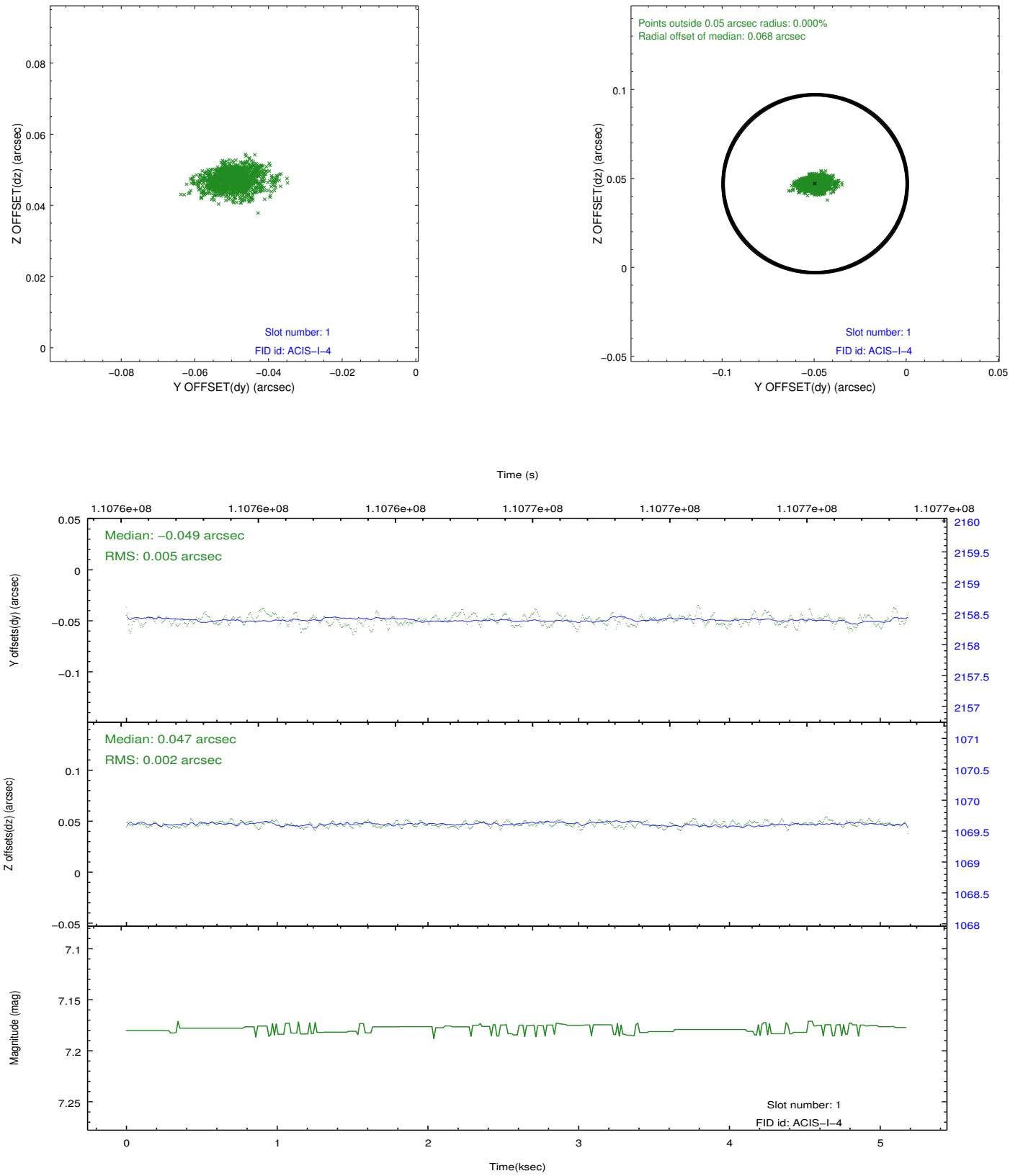


2.5 FID Slots

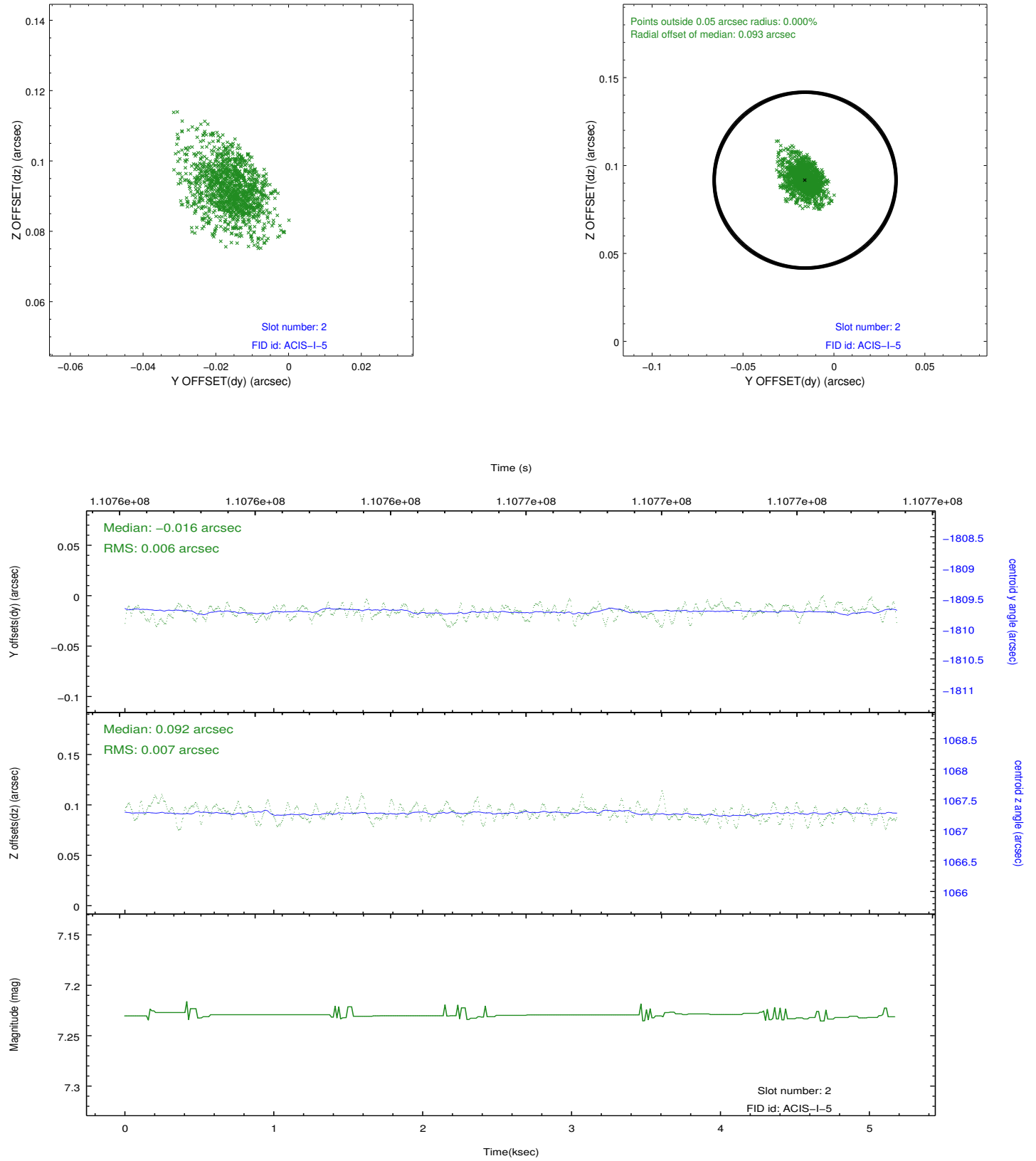
2.5.1 Slot 0



2.5.2 Slot 1



2.5.3 Slot 2



A Summary

A.1 Status

V&V Scientist	Jen Lauer
V&V Date (YYYY-MM-DD)	2012.09.21
V&V Edition	1
V&V Disposition and Status	OK
V&V Charge Time	4.761

A.2 Comments