

# V&V Reference Report

## L2 ASCDS Version : 7.6.9

Observation 1680 - L2 Version 001  
Chandra X-Ray Center

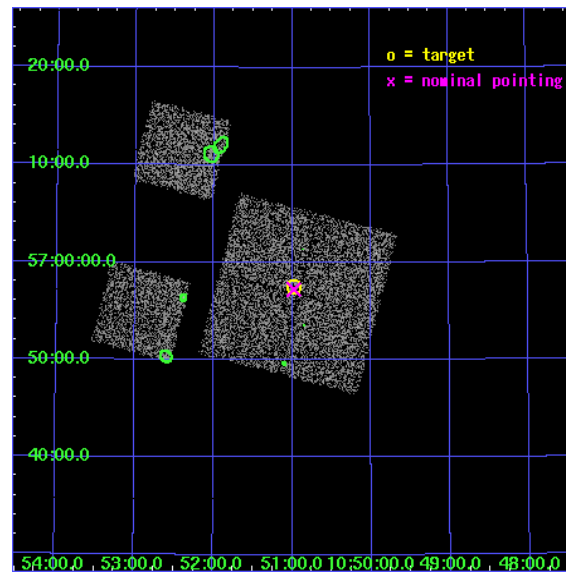
L2 Processing Date : Dec 11 2006

## Contents

<b>1</b>	<b>Front</b>	<b>2</b>
<b>2</b>	<b>OBI</b>	<b>3</b>
2.1	OBI . . . . .	3
2.1.1	Images . . . . .	3
2.1.2	Bias . . . . .	3
2.1.3	Parameters . . . . .	4
2.1.4	Events . . . . .	4
2.2	Compared Parameters . . . . .	5
2.3	Aspect . . . . .	6
2.4	Star Slots . . . . .	9
2.4.1	Slot 3 . . . . .	9
2.4.2	Slot 4 . . . . .	10
2.4.3	Slot 5 . . . . .	11
2.4.4	Slot 6 . . . . .	12
2.4.5	Slot 7 . . . . .	13
2.5	FID Slots . . . . .	14
2.5.1	Slot 0 . . . . .	14
2.5.2	Slot 1 . . . . .	15
2.5.3	Slot 2 . . . . .	16
<b>3</b>	<b>Point Sources</b>	<b>17</b>
<b>A</b>	<b>Summary</b>	<b>18</b>
A.1	Status . . . . .	18
A.2	Comments . . . . .	18

# 1 Front

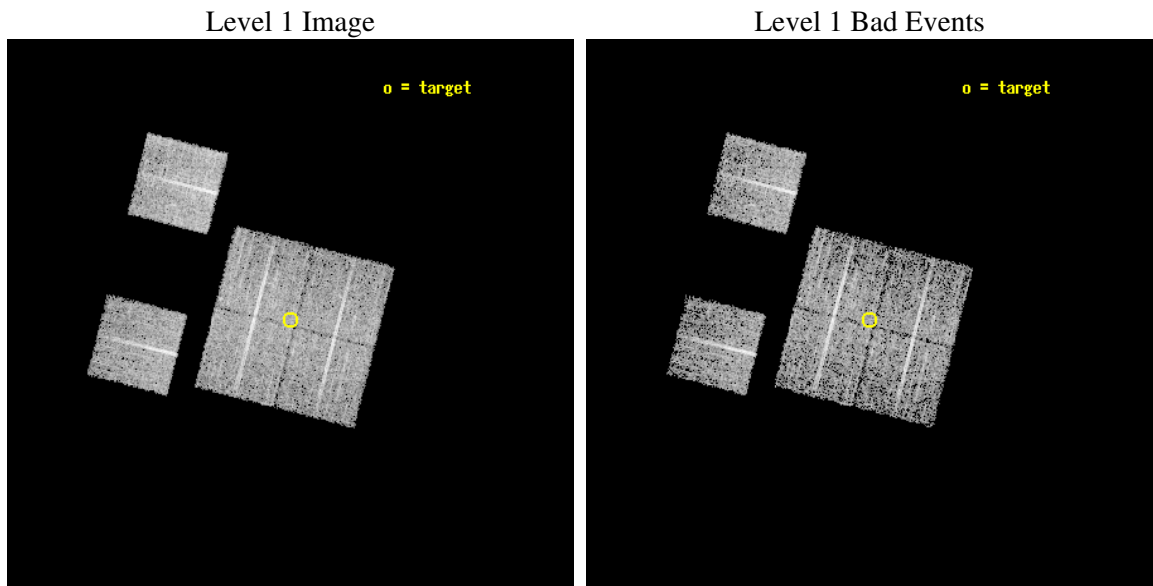
seq_num	900039
obs_id	1680
title	LOCKMAN HOLE SHALLOW SURVEY
observer	Dr. Stephen Murray
object	LOCKMAN HOLE #1
dtcycle	0
cycle	P
ra_targ	162.745833
dec_targ	56.958889
ra_nom	162.74439582677
dec_nom	56.954167991333
roll_nom	284.34815170124
revision	2
ontime	4758.4000044316
livetime	4698.146278411
ontime0	4758.4000044316
ontime1	4755.1590641141
ontime2	4755.1590441912
ontime3	4758.4000044316
ontime6	4758.4000044316
ontime8	4755.1590641141
l2events	18098



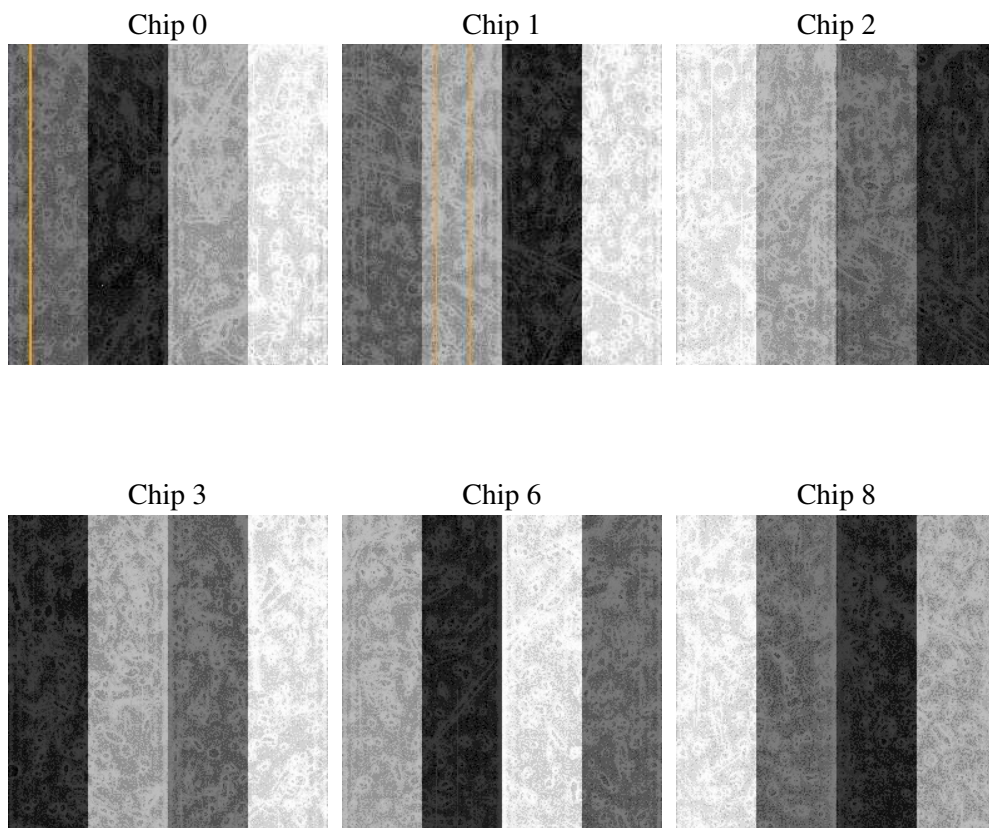
## 2 OBI

### 2.1 OBI

#### 2.1.1 Images



#### 2.1.2 Bias



### 2.1.3 Parameters

obi_num	0
ascdsver	7.6.9
caldsver	3.2.4
date	2006-12-11T17:01:42
revision	2

sched_exp_time	5000.000000
ontime	4764.2656261474
ontime0	4764.265656054
ontime1	4761.0246858299
ontime2	4761.024665907
ontime3	4764.2656261474
ontime6	4764.265656054
ontime8	4761.0247157365
l1events	186918

### 2.1.4 Events

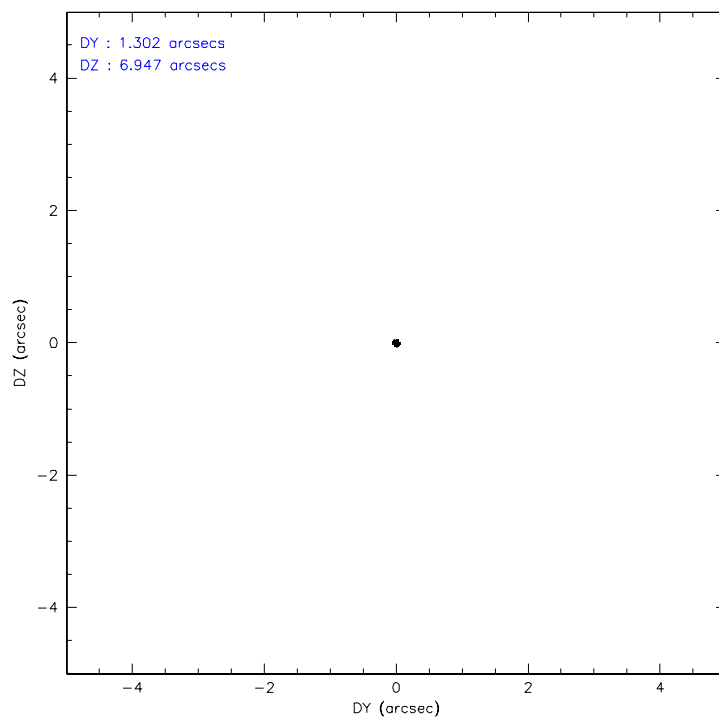
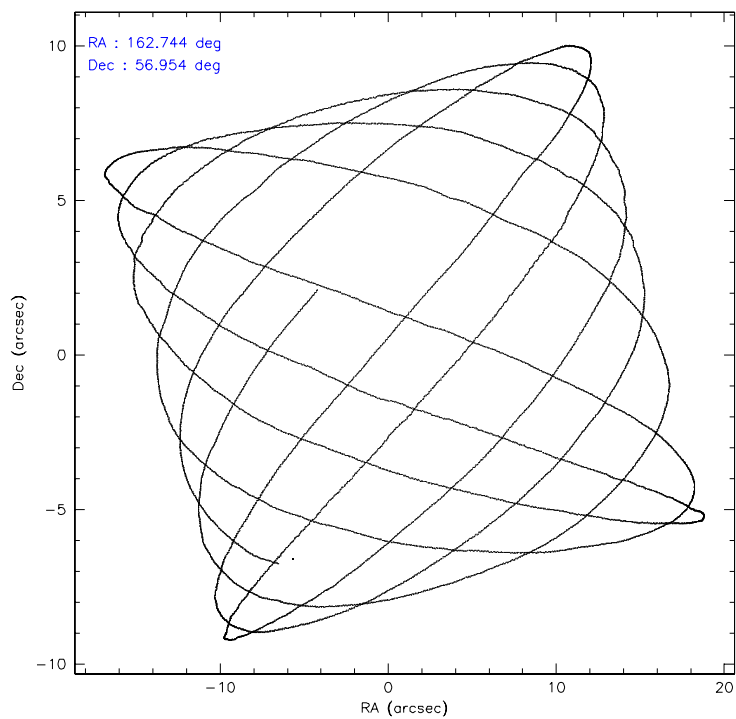
	ccd 0	ccd 1	ccd 2	ccd 3	ccd 6	ccd 8
level 1 events	27625	27433	30225	31023	29957	40655
rejected events	23994	23805	26909	27687	26622	33194
rejected %	86%	86%	89%	89%	88%	81%

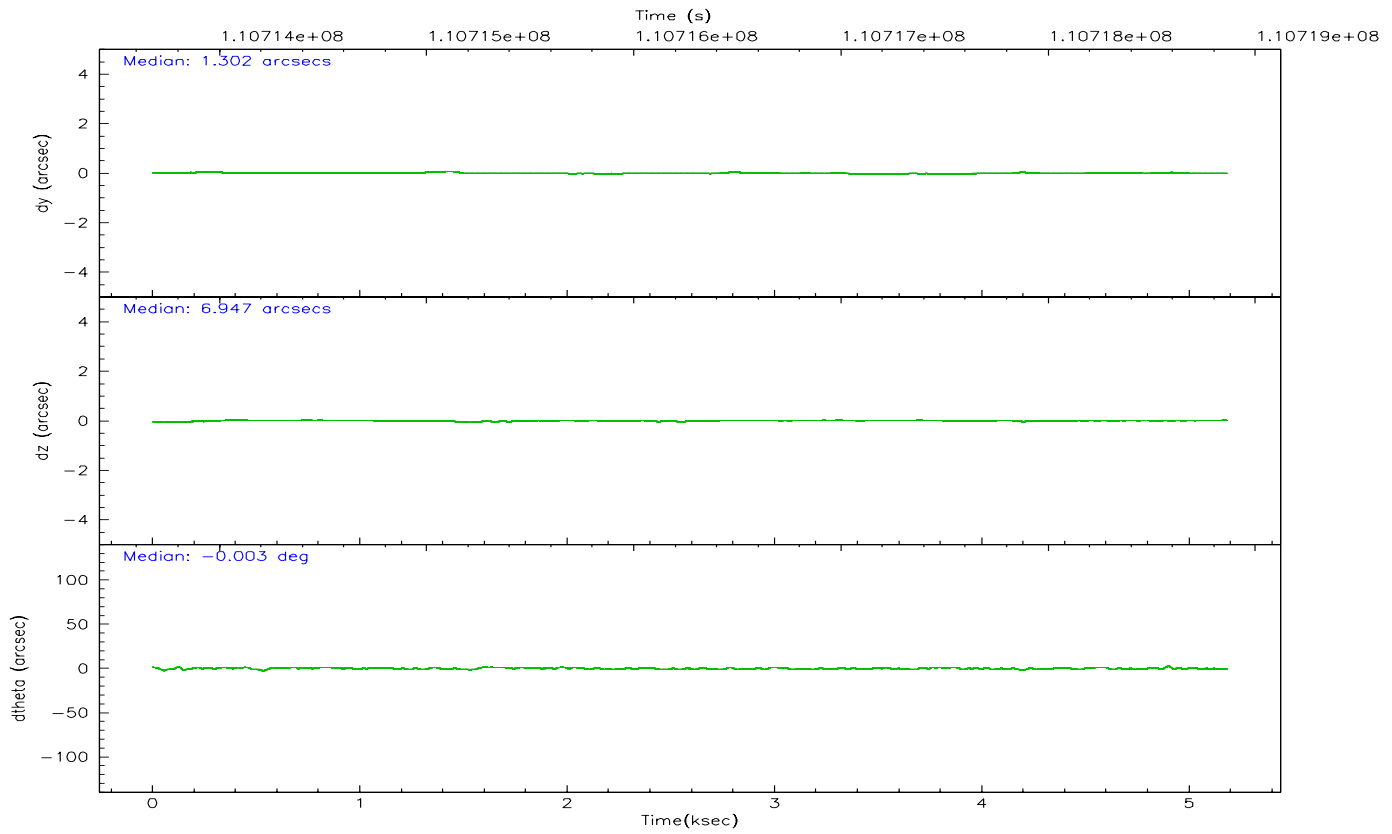
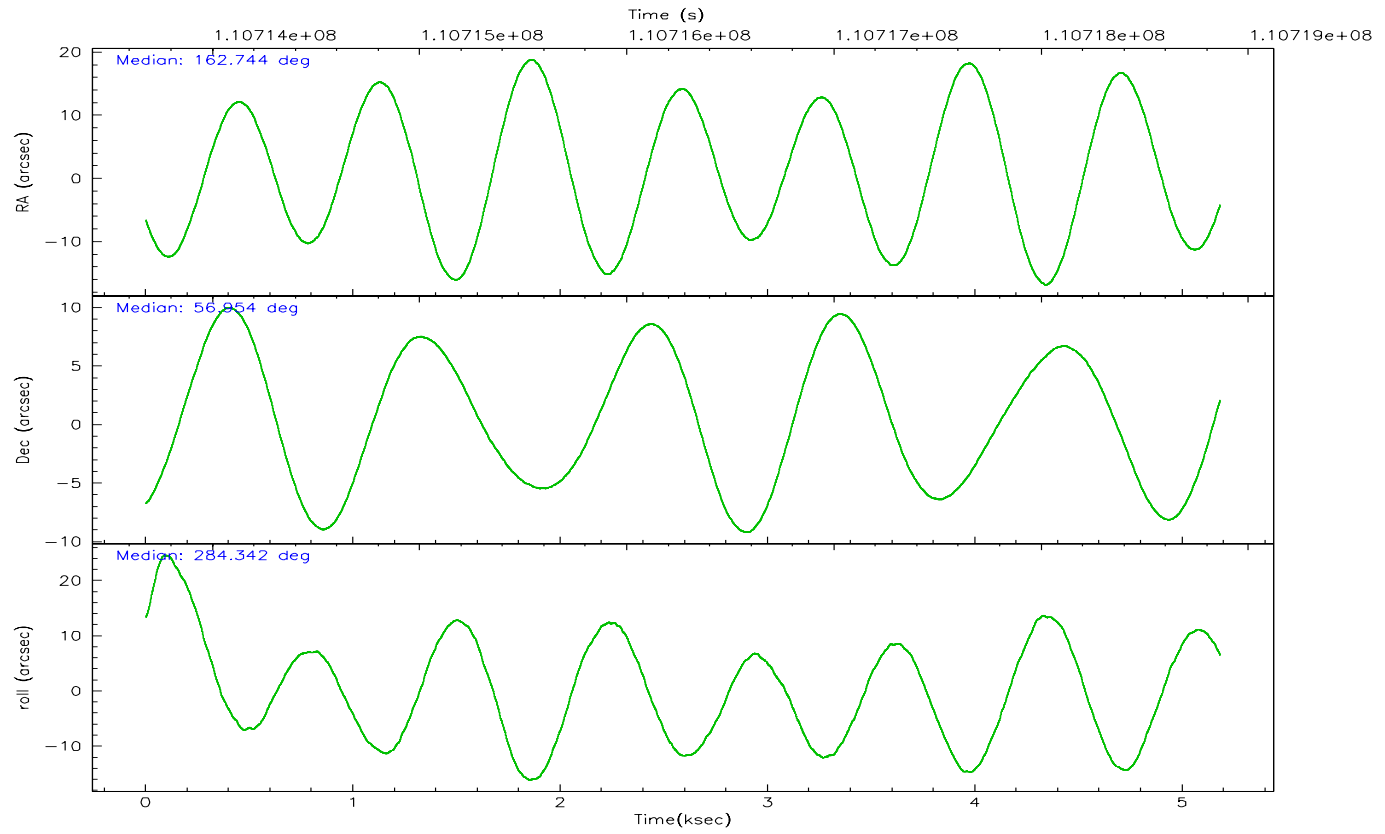
	ccd 0	ccd 1	ccd 2	ccd 3	ccd 6	ccd 8
grade 0 events	1526	1450	1437	1422	1300	2272
	5%	5%	4%	4%	4%	5%
grade 1 events	11	12	17	12	18	27
	0%	0%	0%	0%	0%	0%
grade 2 events	766	740	661	644	679	1763
	2%	2%	2%	2%	2%	4%
grade 3 events	351	329	322	318	340	743
	1%	1%	1%	1%	1%	1%
grade 4 events	347	403	317	345	355	709
	1%	1%	1%	1%	1%	1%
grade 5 events	1102	1174	1009	1155	1283	1601
	3%	4%	3%	3%	4%	3%
grade 6 events	647	708	585	611	663	1994
	2%	2%	1%	1%	2%	4%
grade 7 events	22875	22617	25877	26516	25319	31546
	82%	82%	85%	85%	84%	77%

## 2.2 Compared Parameters

Parameter	Planned	Actual	Parameter	Planned	Actual
Instrument	ACIS	ACIS	Obspar format version number	6	6
Detector	ACIS-012368	ACIS-012368	Obspar file type	PREDICTED	ACTUAL
Grating	NONE	NONE	Obspar update status	NONE	UPDATED
Data mode	FAINT	FAINT	Number of optional ACIS chips dropped	0	0
Observation mode	POINTING	POINTING	On-chip summing requested	N	N
Pointing RA	162.709289	162.7443958267671	Subarray requested	NONE	NONE
Pointing Dec	56.973811	56.95416799133297	Alternating exposures requested	N	N
Pointing Roll	284.168914	284.3481517012421	Primary exposure time	0.000000	3.2
SIM focus pos (mm)	-0.782348	-0.7809083437167272			
SIM defocus (mm)	0	0.001439871863259334			
SIM translation stage pos (mm)	-233.592463	-233.5874344608287			
SIM translation stage offset (mm)	0	-0.005018542100998502			
Observation start time	110713865.184000	110713489.82154			
Observation start date	2001-07-05T09:50:01	2001-07-05T09:44:49			
Observation end time	110718865.184000	110718999.19676			
Observation end date	2001-07-05T11:13:21	2001-07-05T11:16:39			
Read mode	TIMED	TIMED			

## 2.3 Aspect





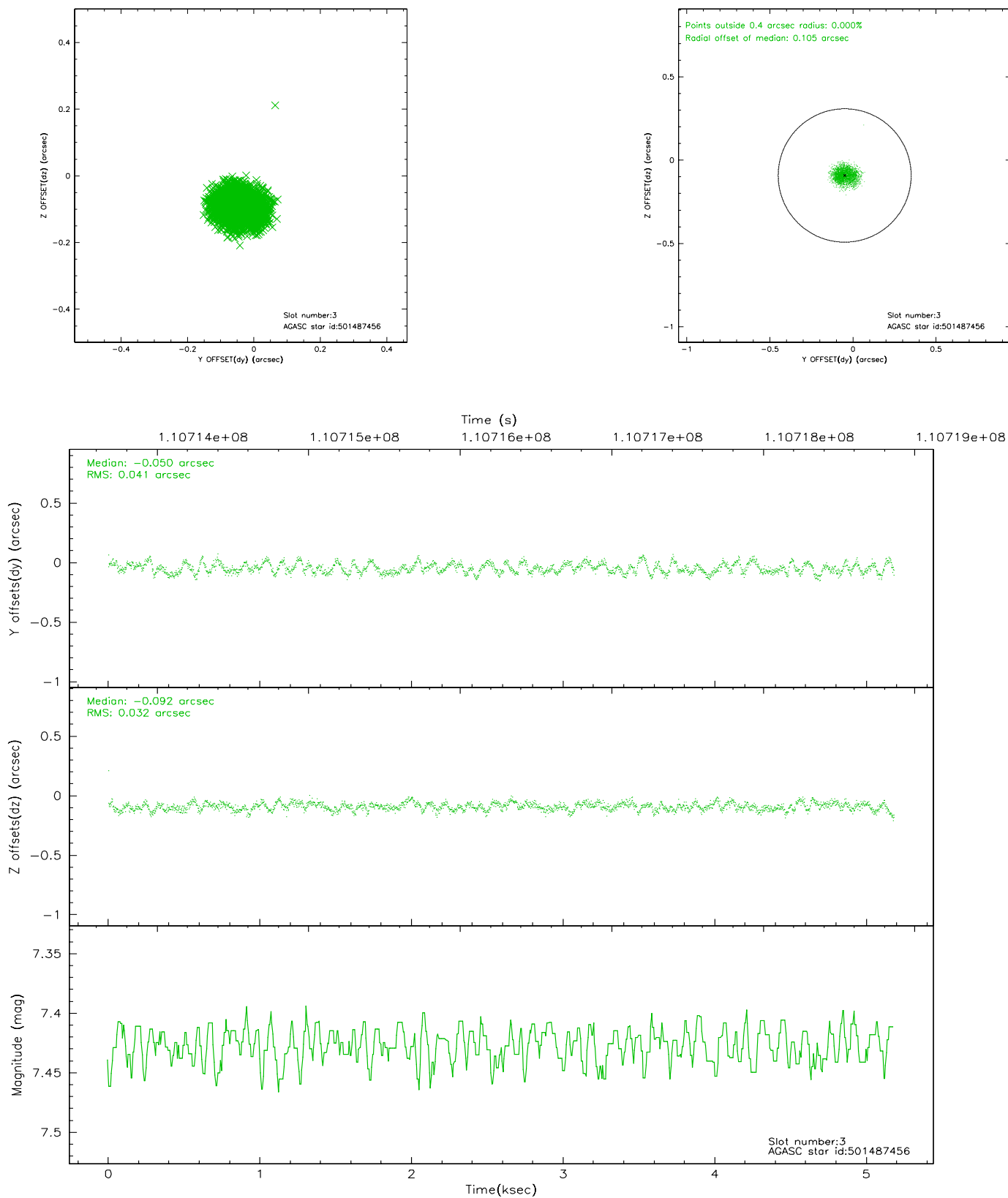
### Slot Statistics

slot	status	id	mag	n_pts	med_dy	med_dz	dr1	dr2	ra	dec	mean_y	mean_z
0	FID	ACIS-I-2	7.15	1264	-0.025	-0.045	0.008	0.016	0.000000	0.000000	-755.65	-836.76
1	FID	ACIS-I-4	7.18	1263	-0.091	0.035	0.005	0.010	0.000000	0.000000	2157.79	1068.95
2	FID	ACIS-I-5	7.23	1262	0.015	0.078	0.009	0.015	0.000000	0.000000	-1807.95	1068.12
3	GUIDE	501487456	7.43	2528	-0.050	-0.092	0.056	0.086	161.499463	56.920840	-417.42	-2345.98
4	GUIDE	501486400	9.26	2529	0.152	-0.022	0.074	0.118	162.514901	56.545412	1400.21	-751.86
5	GUIDE	501877264	9.31	2527	-0.119	0.120	0.105	0.167	163.254394	57.702218	-2289.96	1659.60
6	GUIDE	501488528	8.10	2528	-0.063	-0.086	0.065	0.102	162.150935	57.312270	-1452.48	-752.48
7	GUIDE	501486512	9.61	2523	0.082	0.080	0.097	0.153	163.579075	56.729186	1262.87	1452.82

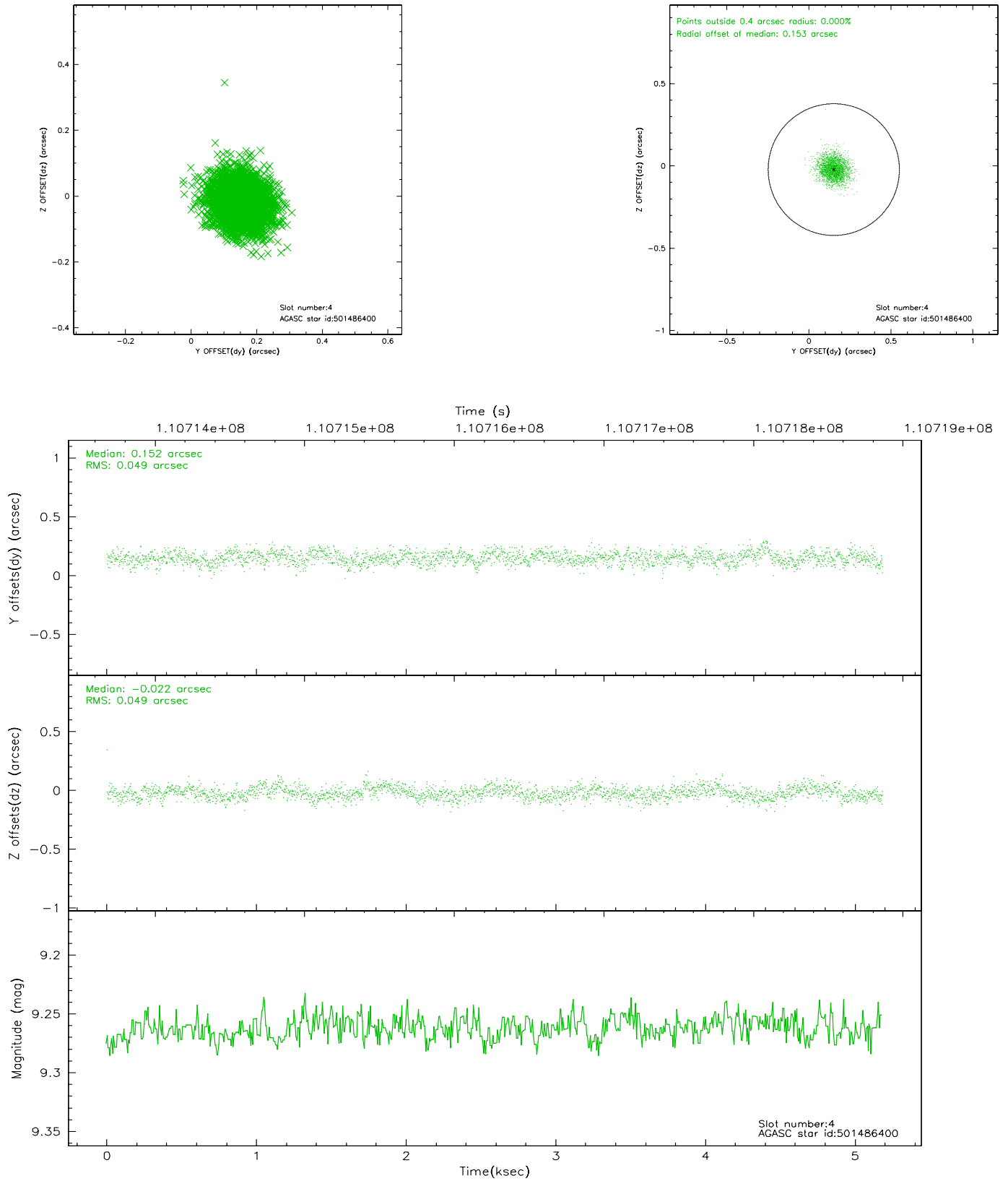


## 2.4 Star Slots

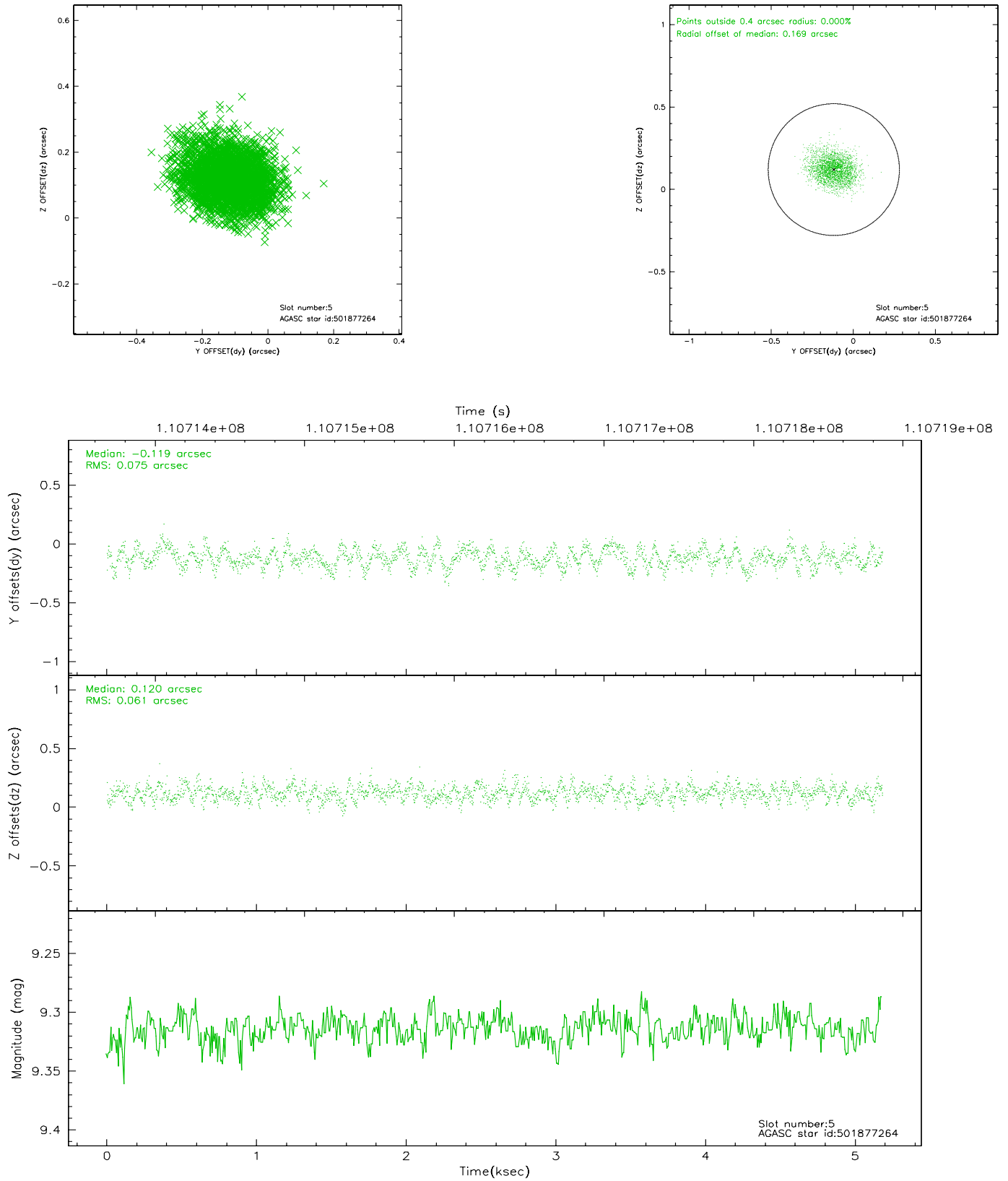
### 2.4.1 Slot 3



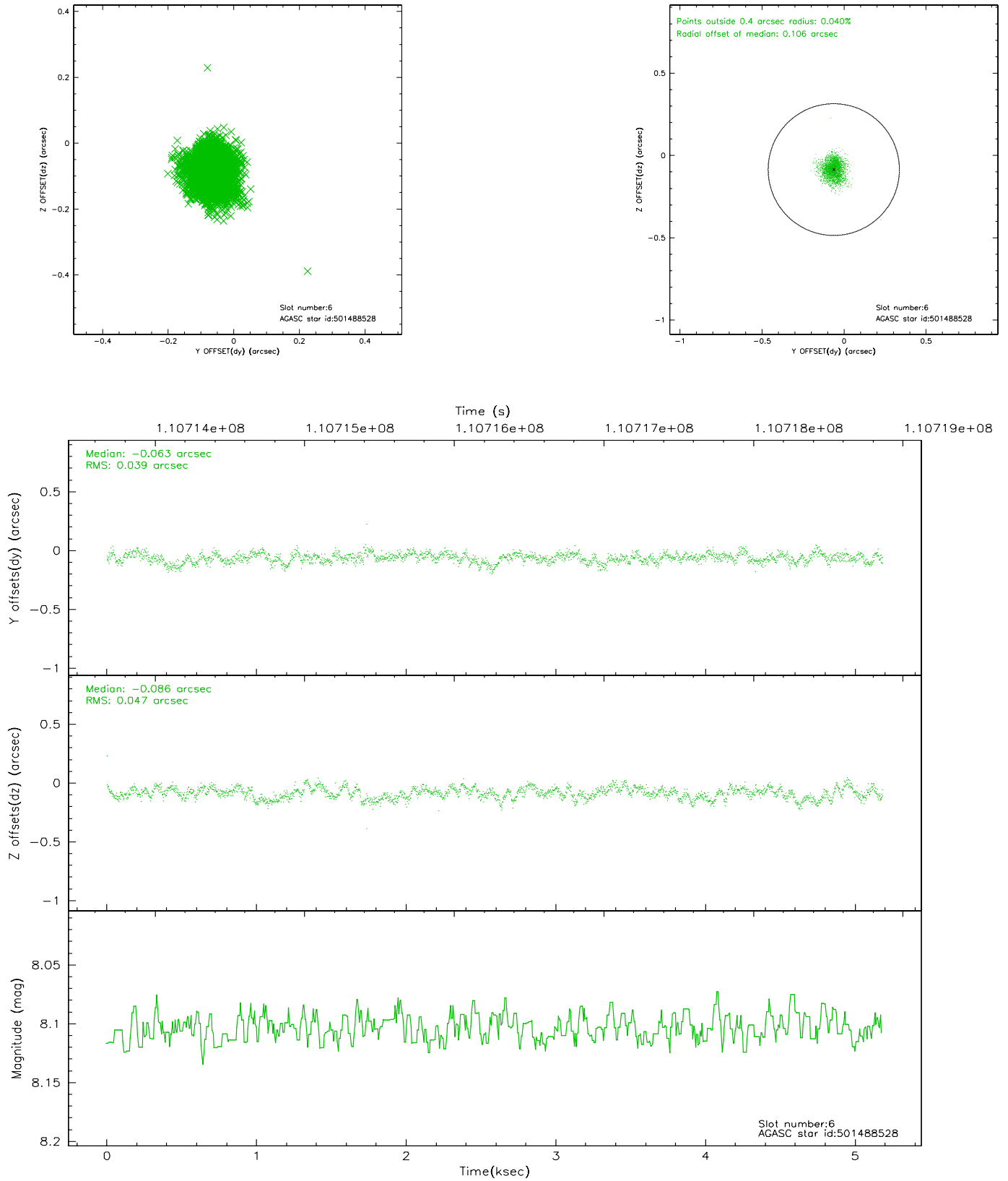
## 2.4.2 Slot 4



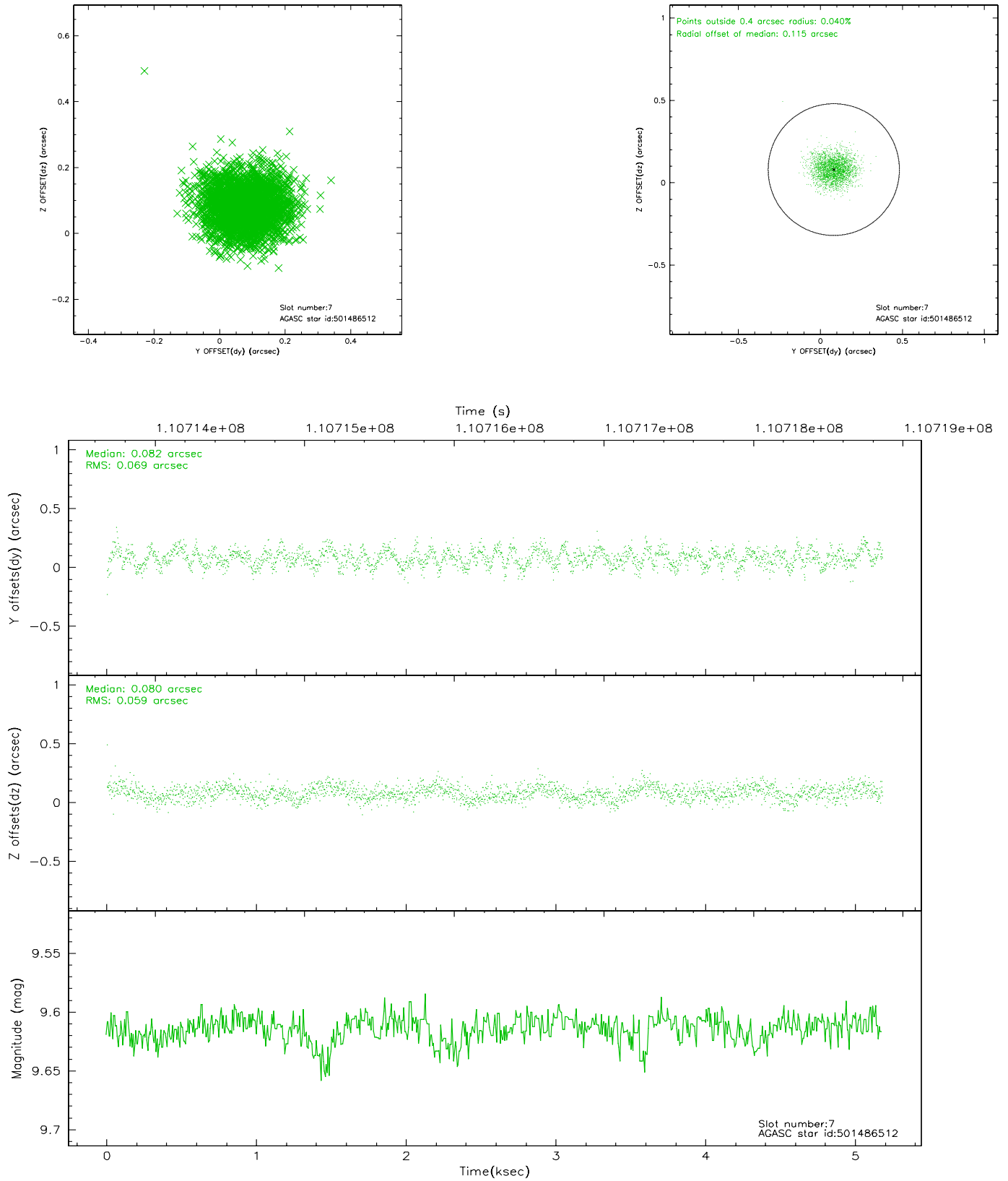
### 2.4.3 Slot 5



## 2.4.4 Slot 6

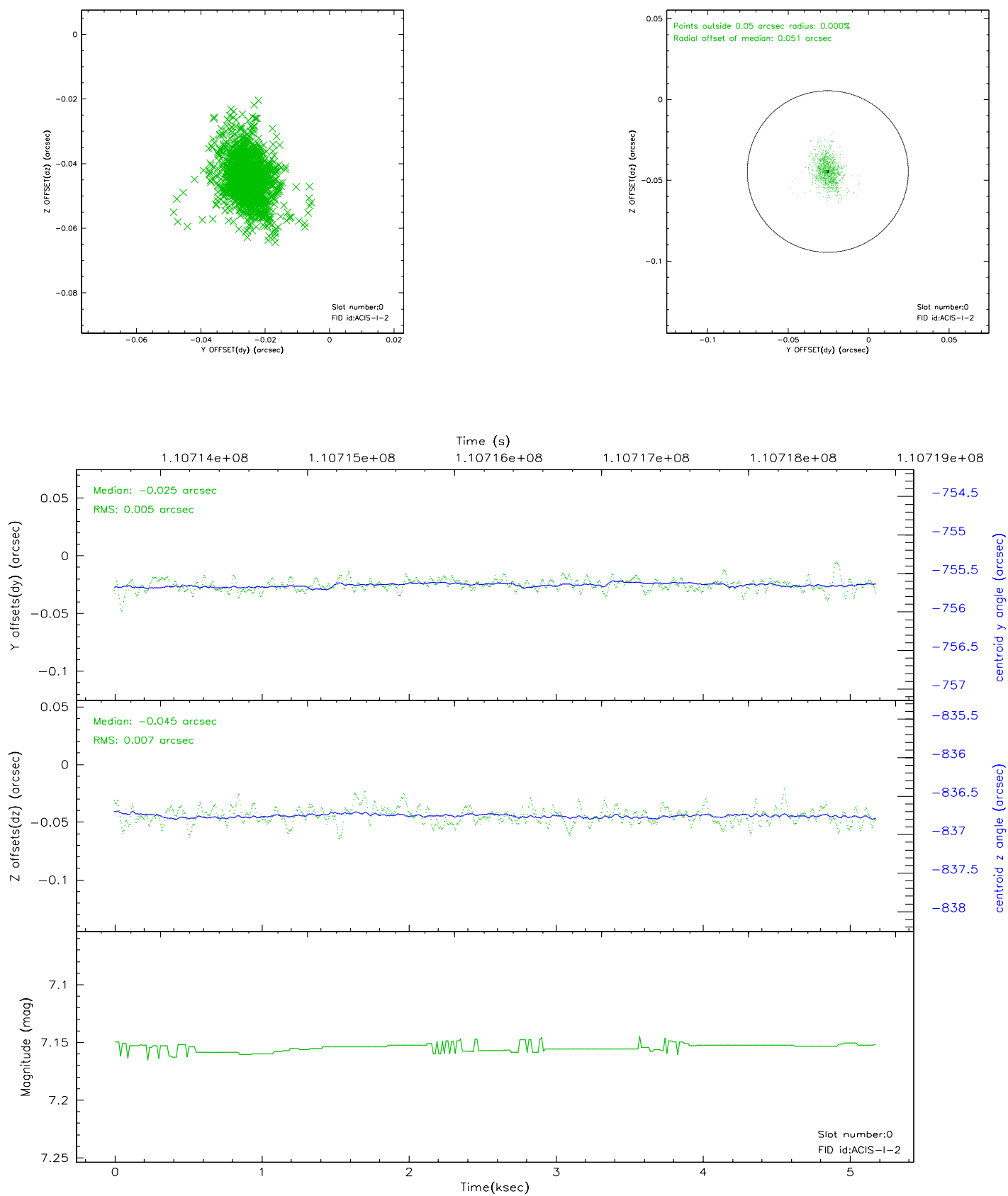


## 2.4.5 Slot 7

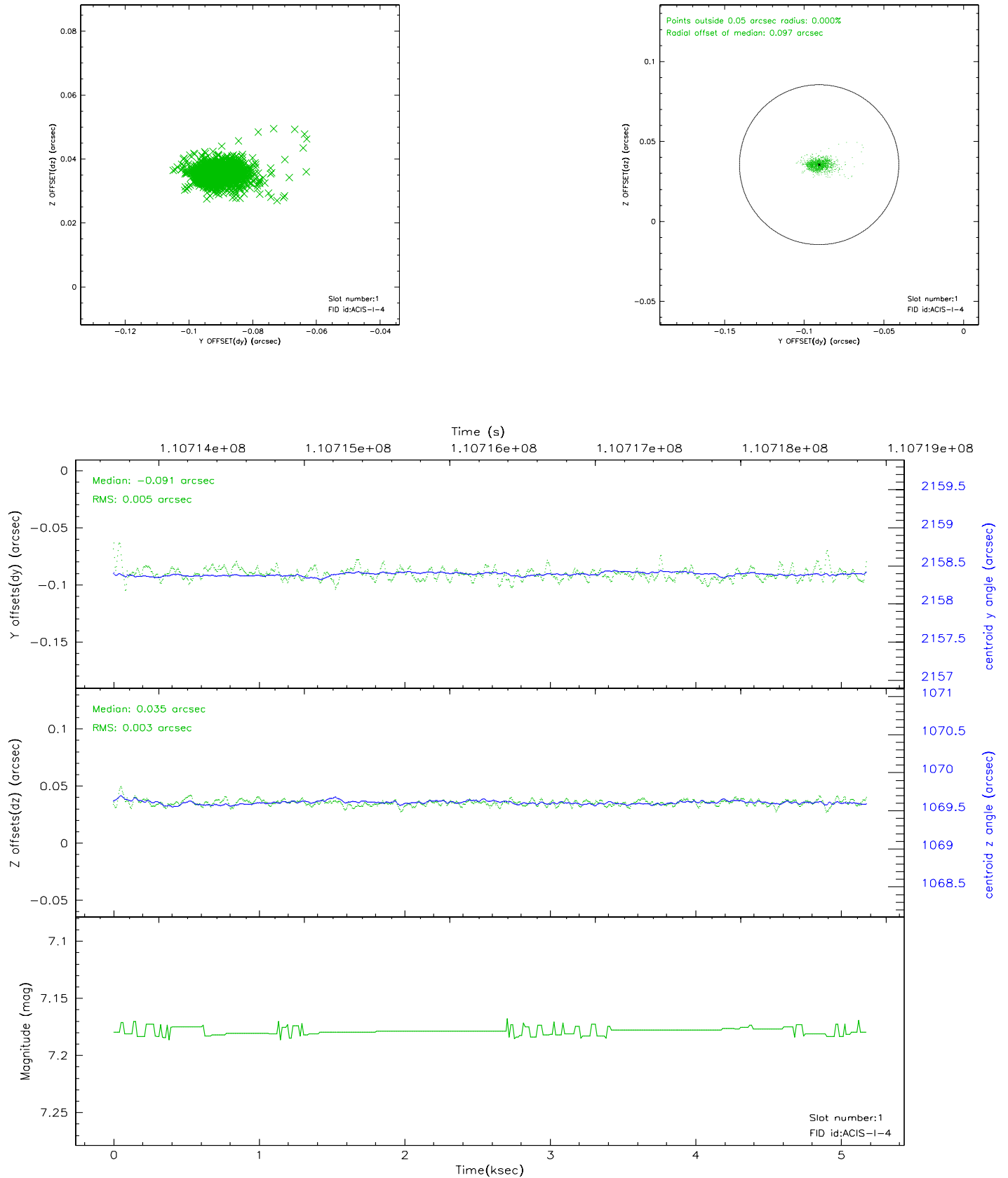


## 2.5 FID Slots

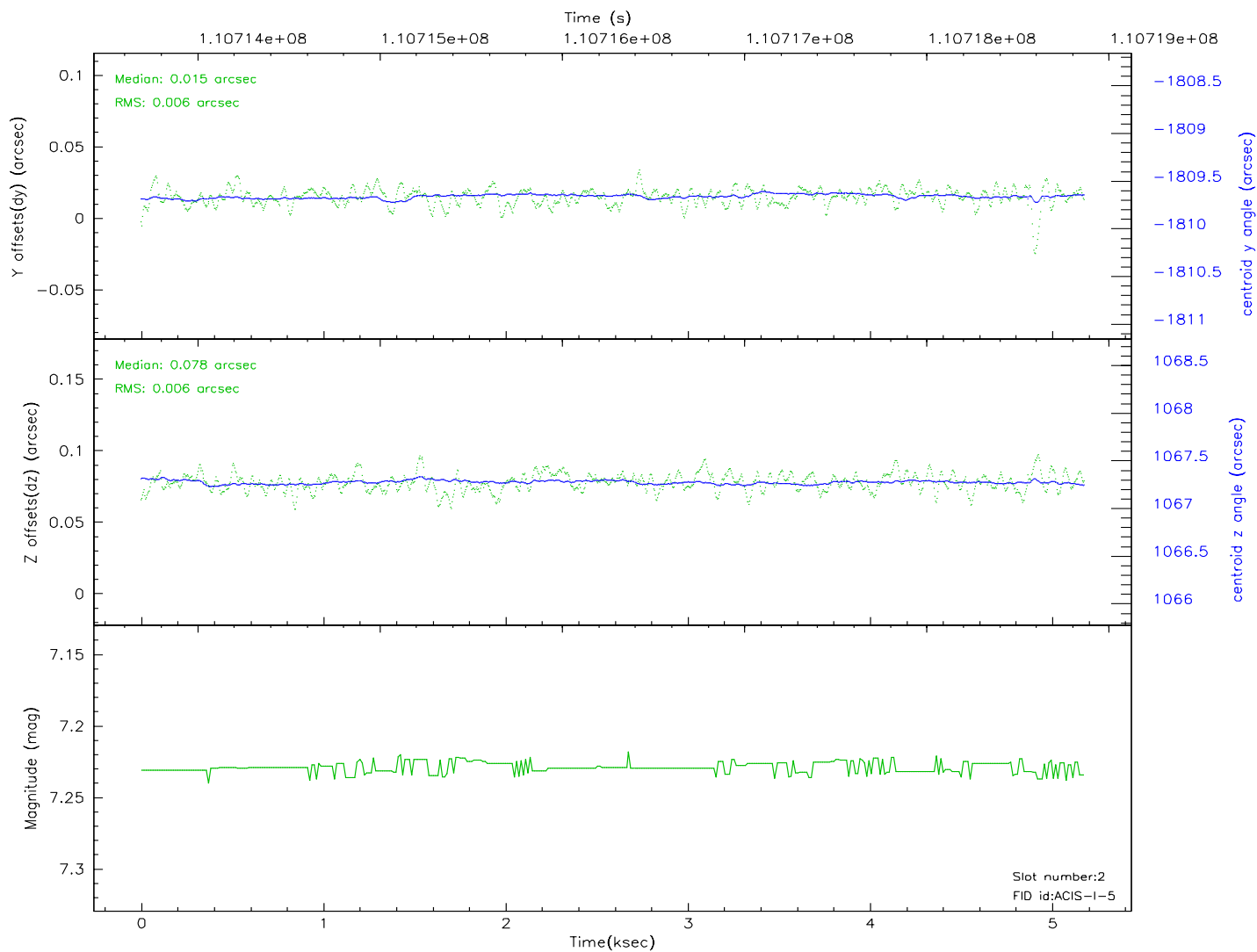
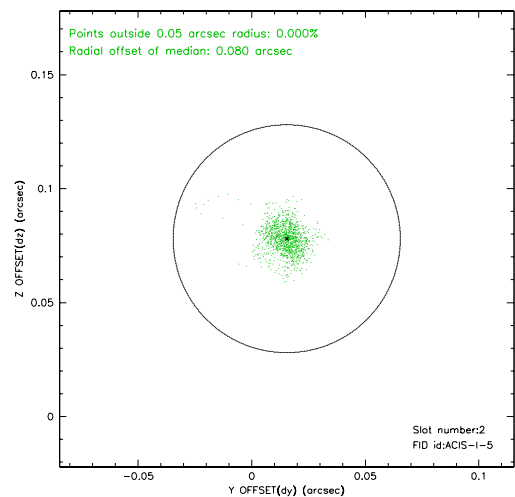
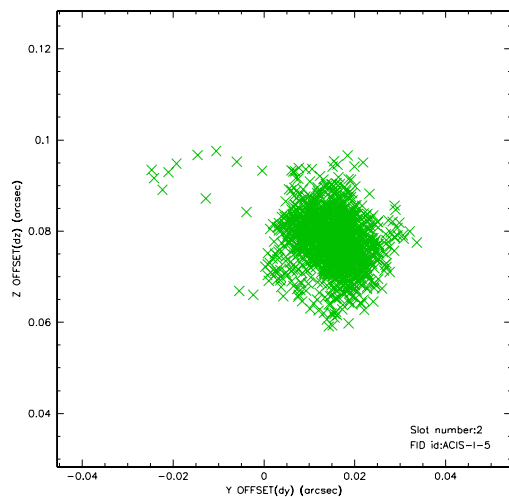
### 2.5.1 Slot 0



## 2.5.2 Slot 1

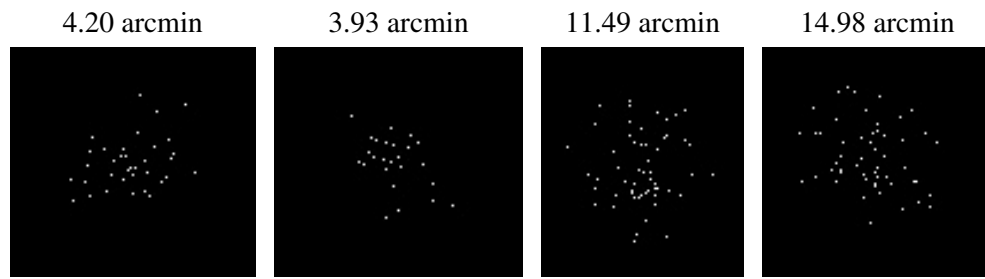


### 2.5.3 Slot 2





### 3 Point Sources



## A Summary

### A.1 Status

V&V Scientist	Beth Sundheim
V&V Date (YYYY-MM-DD)	2006.12.11
V&V Edition	1
V&V Disposition and Status	OK
V&V Charge Time	4.761

### A.2 Comments