

V&V Reference Report

L2 ASCDS Version : 7.6.9

Observation 2427 - L2 Version 001
Chandra X-Ray Center

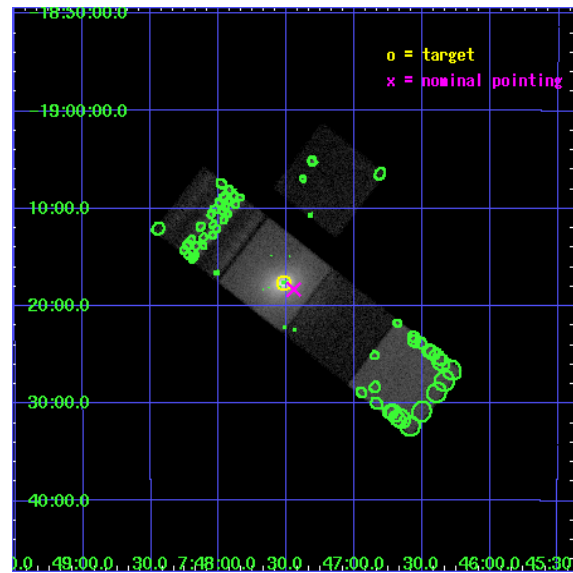
L2 Processing Date : Dec 8 2006

Contents

1	Front	2
2	OBI	3
2.1	OBI	3
2.1.1	Images	3
2.1.2	Bias	3
2.1.3	Parameters	4
2.1.4	Events	4
2.2	Compared Parameters	5
2.3	Aspect	6
2.4	Star Slots	9
2.4.1	Slot 3	9
2.4.2	Slot 4	10
2.4.3	Slot 5	11
2.4.4	Slot 6	12
2.4.5	Slot 7	13
2.5	FID Slots	14
2.5.1	Slot 0	14
2.5.2	Slot 1	15
2.5.3	Slot 2	16
3	Point Sources	17
A	Summary	18
A.1	Status	18
A.2	Comments	18

1 Front

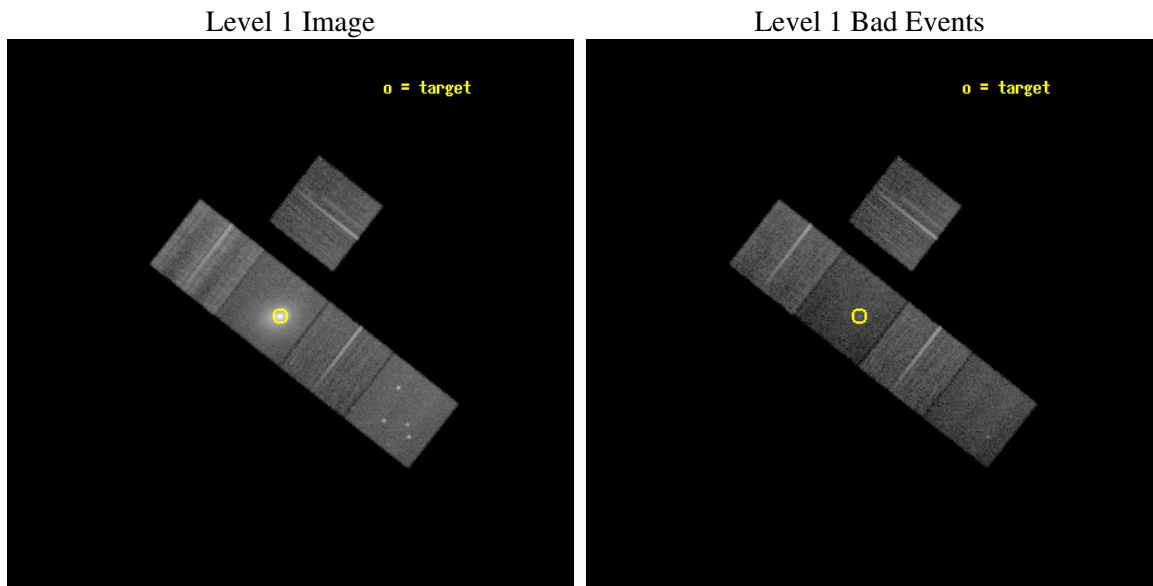
seq_num	800178
obs_id	2427
title	REOBSERVATION OF PKS0745-191
observer	Prof Andrew Fabian
object	PKS0745-191
dtcycle	0
cycle	P
ra_targ	116.88
dec_targ	-19.294167
ra_nom	116.86151025351
dec_nom	-19.305523620439
roll_nom	217.97832523207
revision	2
ontime	18091.599965215
livetime	17855.219892827
ontime3	18079.036134243
ontime5	18091.599965215
ontime6	18091.599965215
ontime7	18091.599965215
ontime8	18091.599965215
l2events	288286



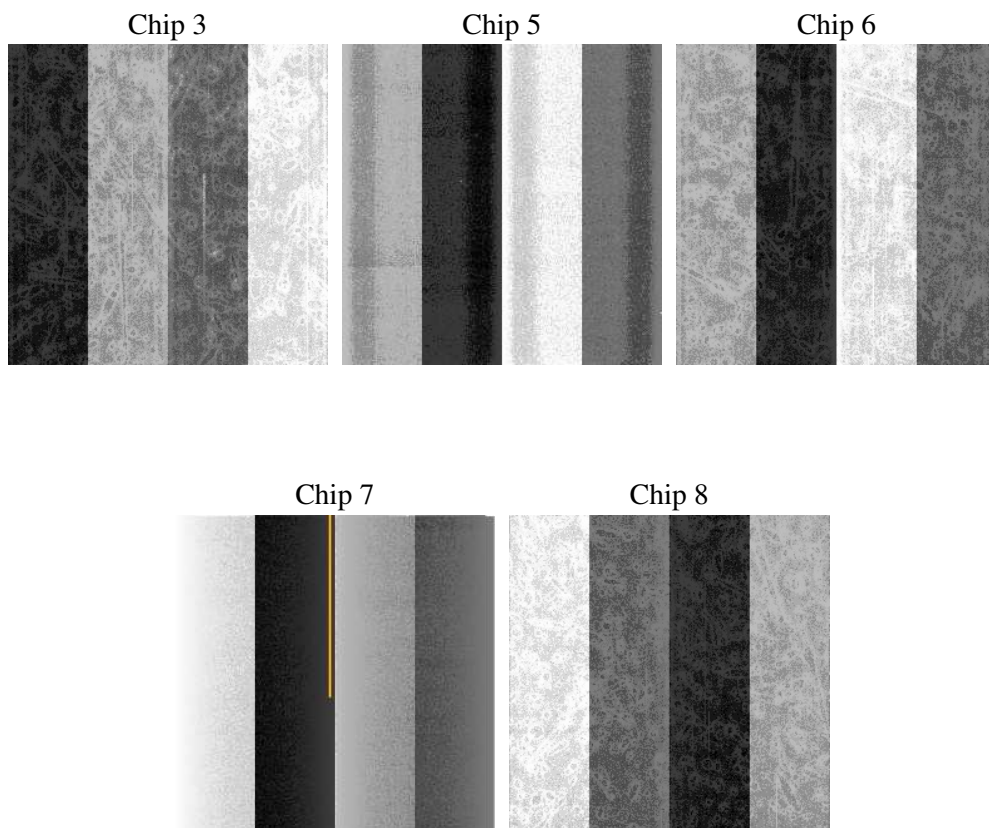
2 OBI

2.1 OBI

2.1.1 Images



2.1.2 Bias



2.1.3 Parameters

obi_num	0
ascdsver	7.6.9
caldsver	3.2.4
date	2006-12-08T05:46:41
revision	2

sched_exp_time	18000.000000
ontime	18098.430525988
ontime3	18085.866695017
ontime5	18098.430525988
ontime6	18098.430525988
ontime7	18098.430525988
ontime8	18098.430525988
l1events	790991

2.1.4 Events

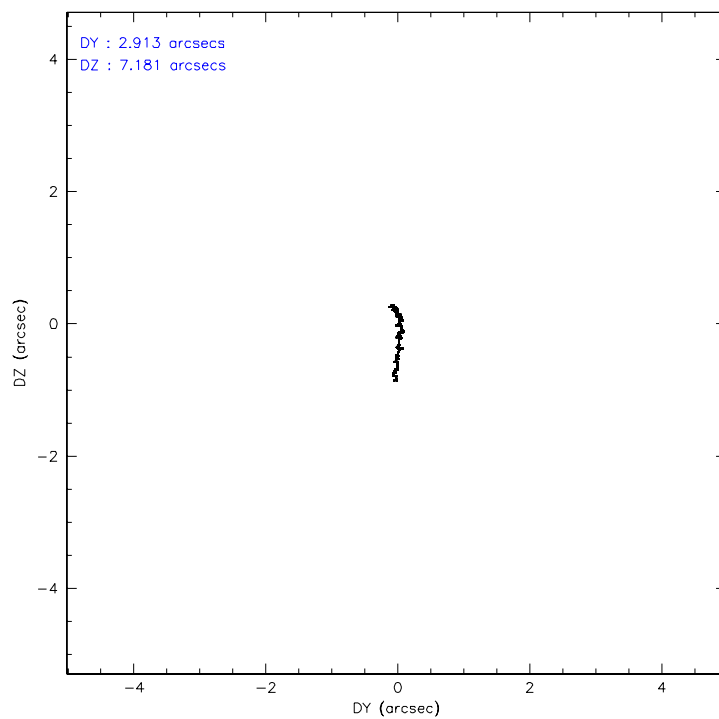
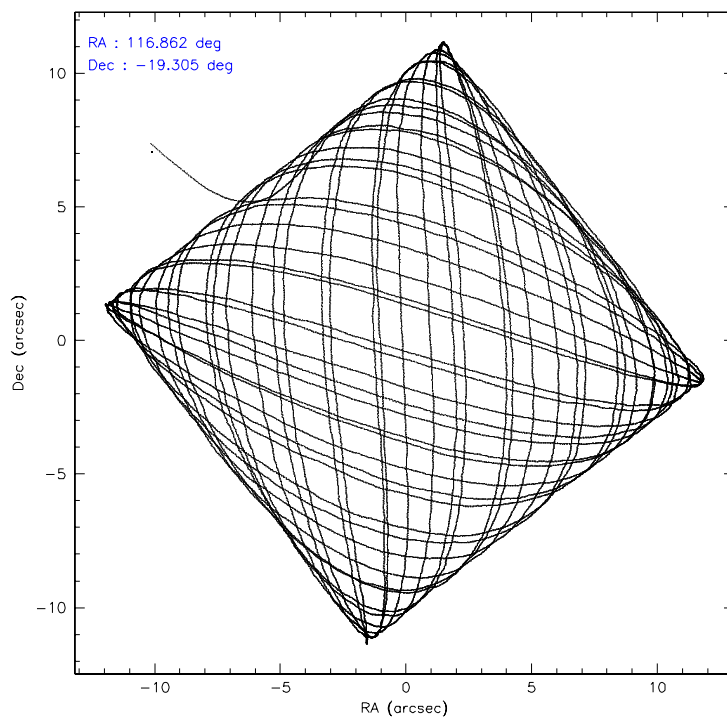
	ccd 3	ccd 5	ccd 6	ccd 7	ccd 8
level 1 events	111244	134291	121283	244320	179853
rejected events	100839	68389	104936	62991	113024
rejected %	90%	50%	86%	25%	62%

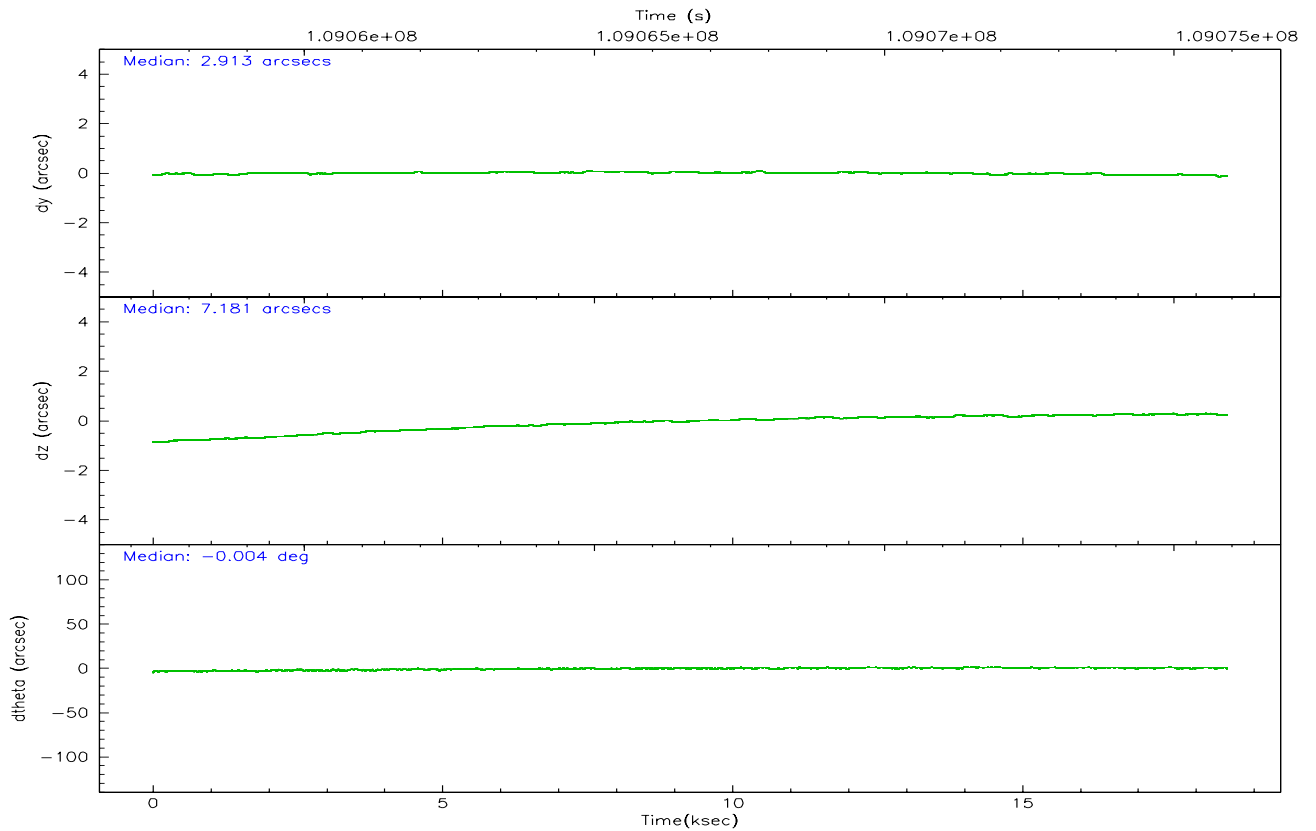
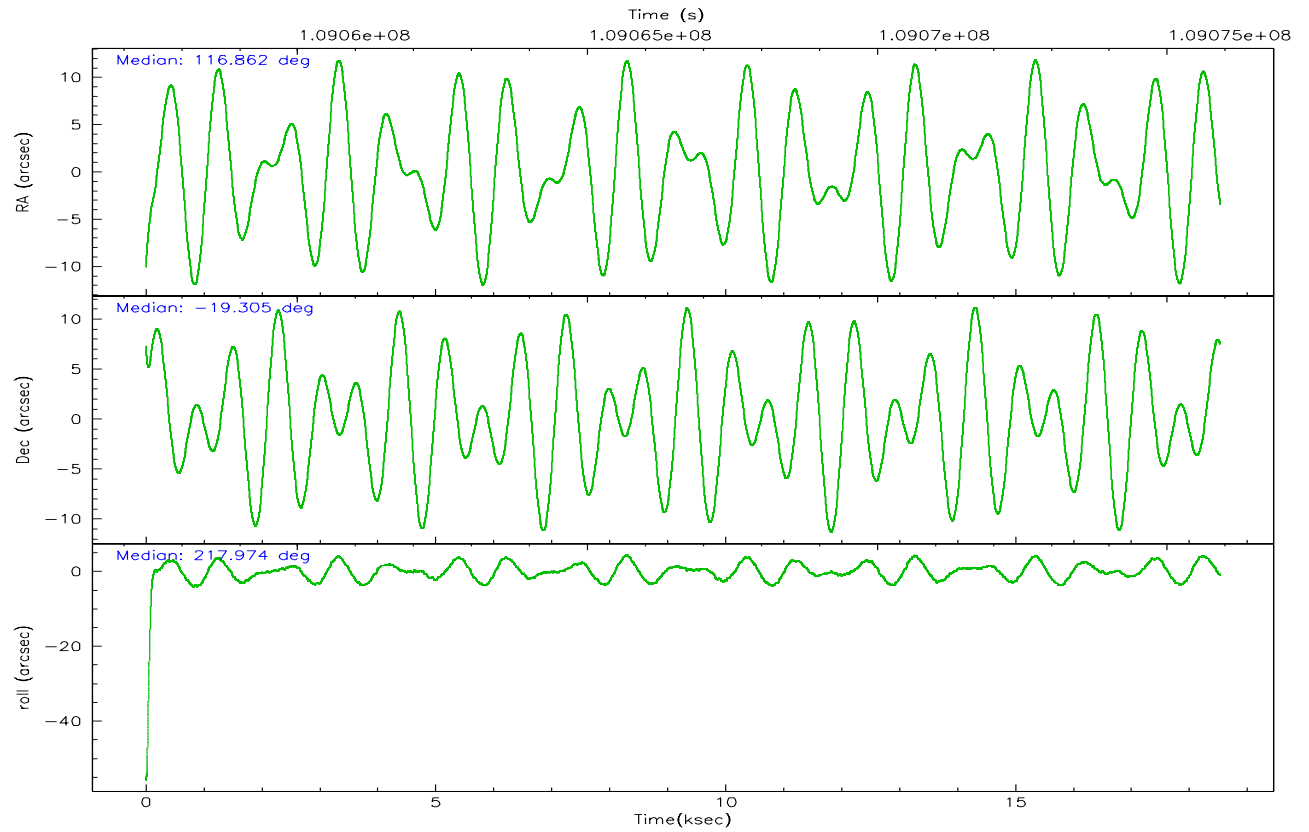
	ccd 3	ccd 5	ccd 6	ccd 7	ccd 8
grade 0 events	4151	7357	8193	35856	20137
	3%	5%	6%	14%	11%
grade 1 events	46	290	63	104	188
	0%	0%	0%	0%	0%
grade 2 events	2149	19616	3233	49484	11409
	1%	14%	2%	20%	6%
grade 3 events	1136	2051	1329	17737	9925
	1%	1%	1%	7%	5%
grade 4 events	1093	2063	1333	17400	8789
	0%	1%	1%	7%	4%
grade 5 events	3371	7151	3882	9166	5853
	3%	5%	3%	3%	3%
grade 6 events	1886	34838	2262	60911	16572
	1%	25%	1%	24%	9%
grade 7 events	97412	60925	100988	53662	106980
	87%	45%	83%	21%	59%

2.2 Compared Parameters

Parameter	Planned	Actual	Parameter	Planned	Actual
Instrument	ACIS	ACIS	Obspar format version number	6	6
Detector	ACIS-35678	ACIS-35678	Obspar file type	PREDICTED	ACTUAL
Grating	NONE	NONE	Obspar update status	NONE	UPDATED
Data mode	VFAINT	VFAINT	Number of optional ACIS chips dropped	0	0
Observation mode	POINTING	POINTING	On-chip summing requested	N	N
Pointing RA	116.872050	116.8615102535079	Subarray requested	NONE	NONE
Pointing Dec	-19.280156	-19.30552362043895	Alternating exposures requested	N	N
Pointing Roll	217.825221	217.9783252320693	Primary exposure time	0.000000	3.1
SIM focus pos (mm)	-0.684267	-0.6828225247311905			
SIM defocus (mm)	0	0.001444936568705701			
SIM translation stage pos (mm)	-190.132523	-190.1400660498719			
SIM translation stage offset (mm)	0	0.00754346686406393			
Observation start time	109057914.184000	109056772.51939			
Observation start date	2001-06-16T05:50:50	2001-06-16T05:32:52			
Observation end time	109075914.184000	109076867.64517			
Observation end date	2001-06-16T10:50:50	2001-06-16T11:07:47			
Read mode	TIMED	TIMED			

2.3 Aspect



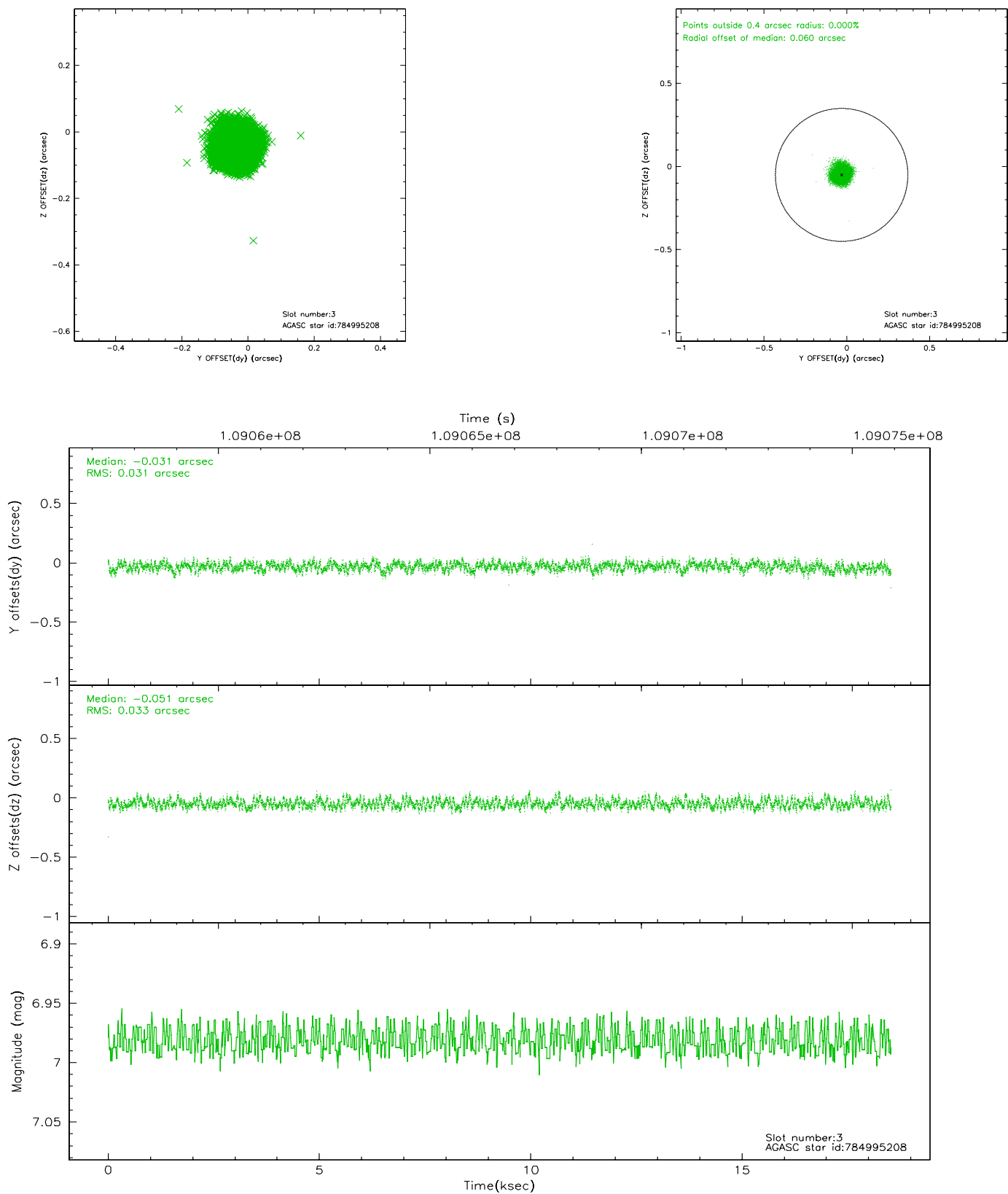


Slot Statistics

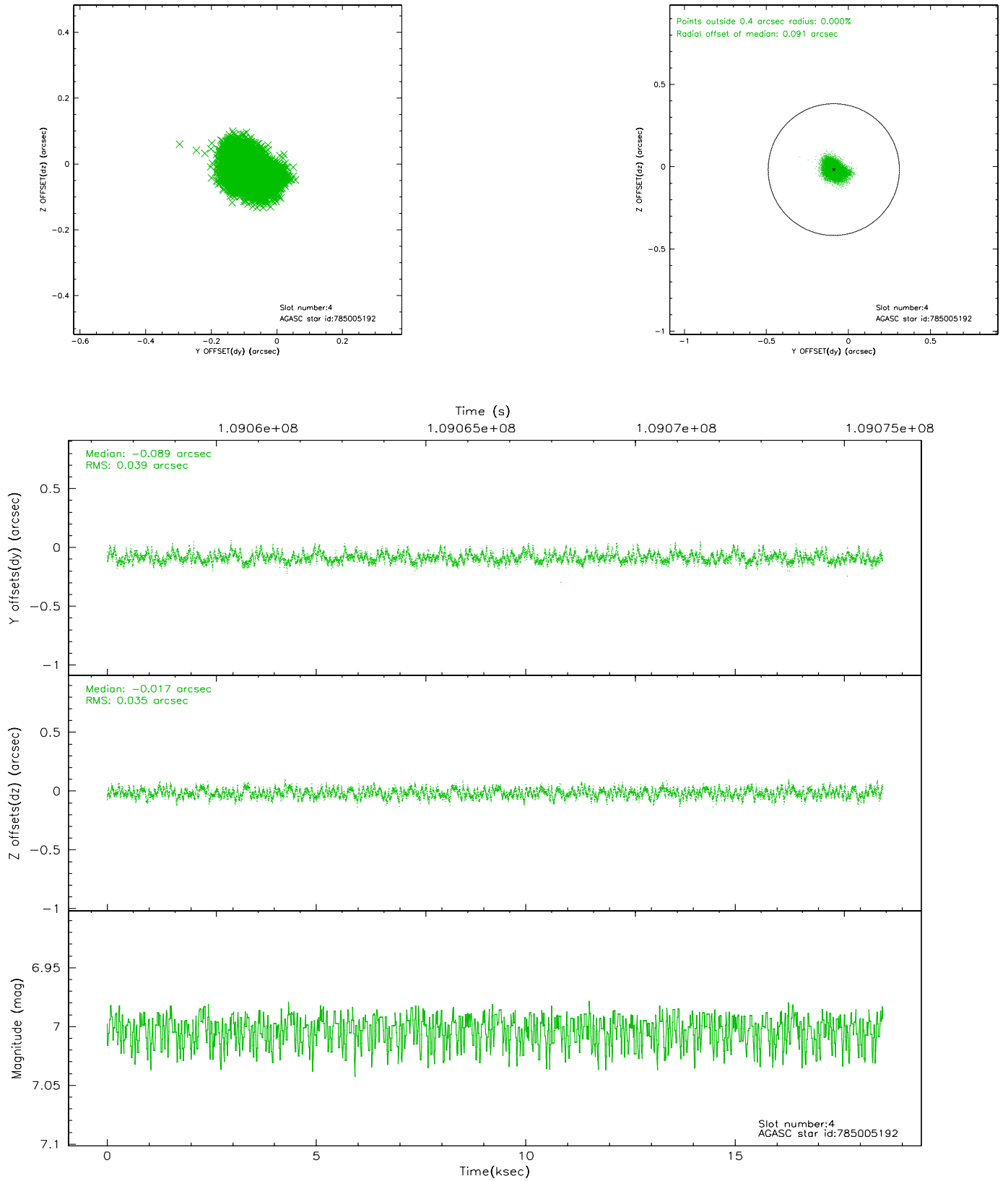
slot	status	id	mag	n_pts	med_dy	med_dz	dr1	dr2	ra	dec	mean_y	mean_z
0	FID	ACIS-S-2	7.11	4520	0.007	0.037	0.016	0.027	0.000000	0.000000	-755.54	-1728.20
1	FID	ACIS-S-4	7.20	4520	-0.103	-0.013	0.011	0.022	0.000000	0.000000	2157.53	180.01
2	FID	ACIS-S-5	7.24	4520	0.065	-0.015	0.012	0.023	0.000000	0.000000	-1808.05	173.92
3	GUIDE	784995208	6.98	9040	-0.031	-0.051	0.049	0.076	117.440623	-19.006902	-2129.61	412.46
4	GUIDE	785005192	7.00	9040	-0.089	-0.017	0.056	0.090	117.182950	-19.174871	-1066.78	349.98
5	GUIDE	784994704	6.97	9040	-0.010	0.033	0.046	0.071	116.488404	-18.904531	204.15	-1867.82
6	GUIDE	785000528	6.90	9040	-0.074	-0.115	0.044	0.070	116.828383	-19.401048	384.39	252.94
7	GUIDE	785012056	8.59	9037	0.206	0.149	0.061	0.098	116.827720	-19.932259	1558.76	1763.01

2.4 Star Slots

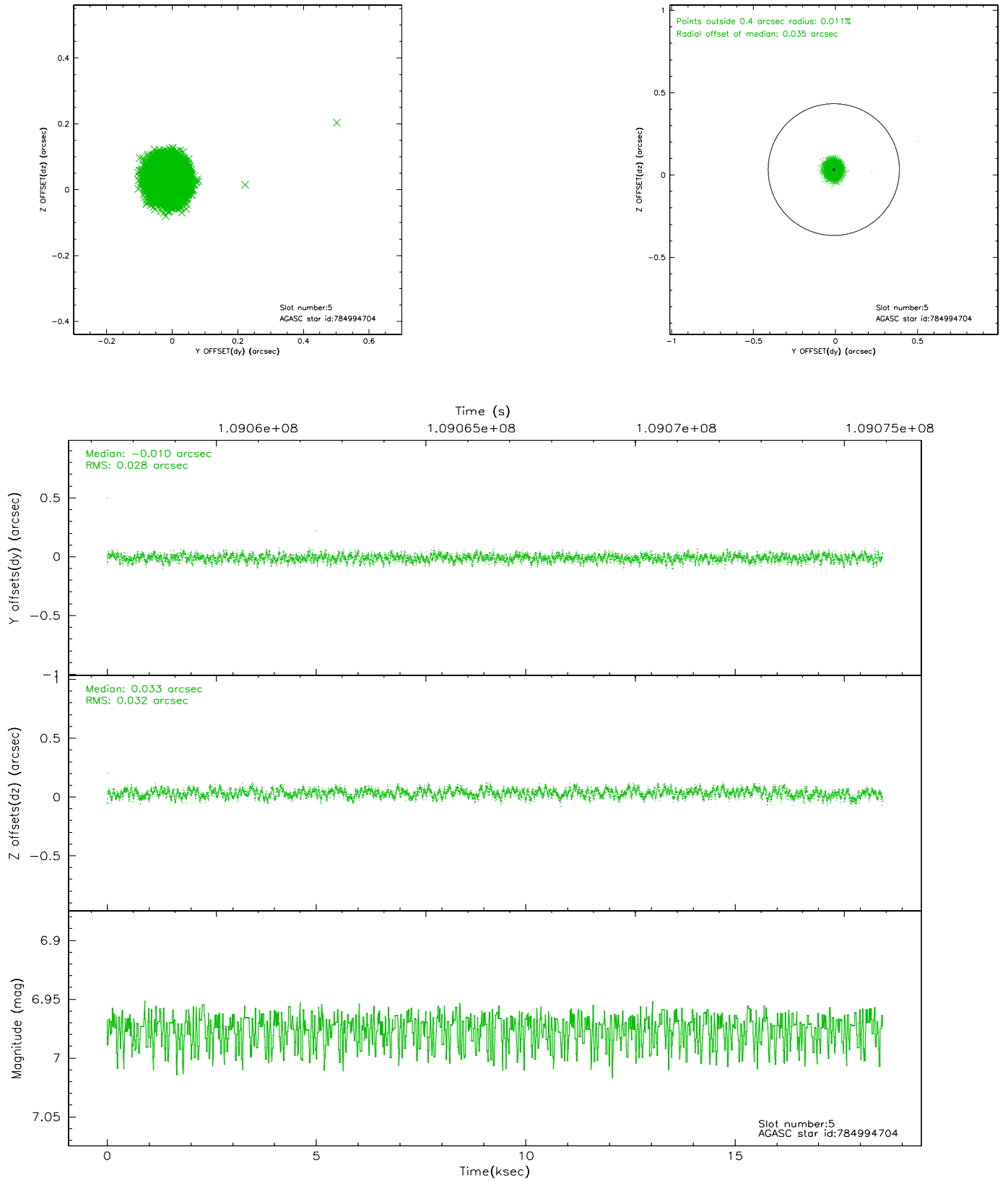
2.4.1 Slot 3



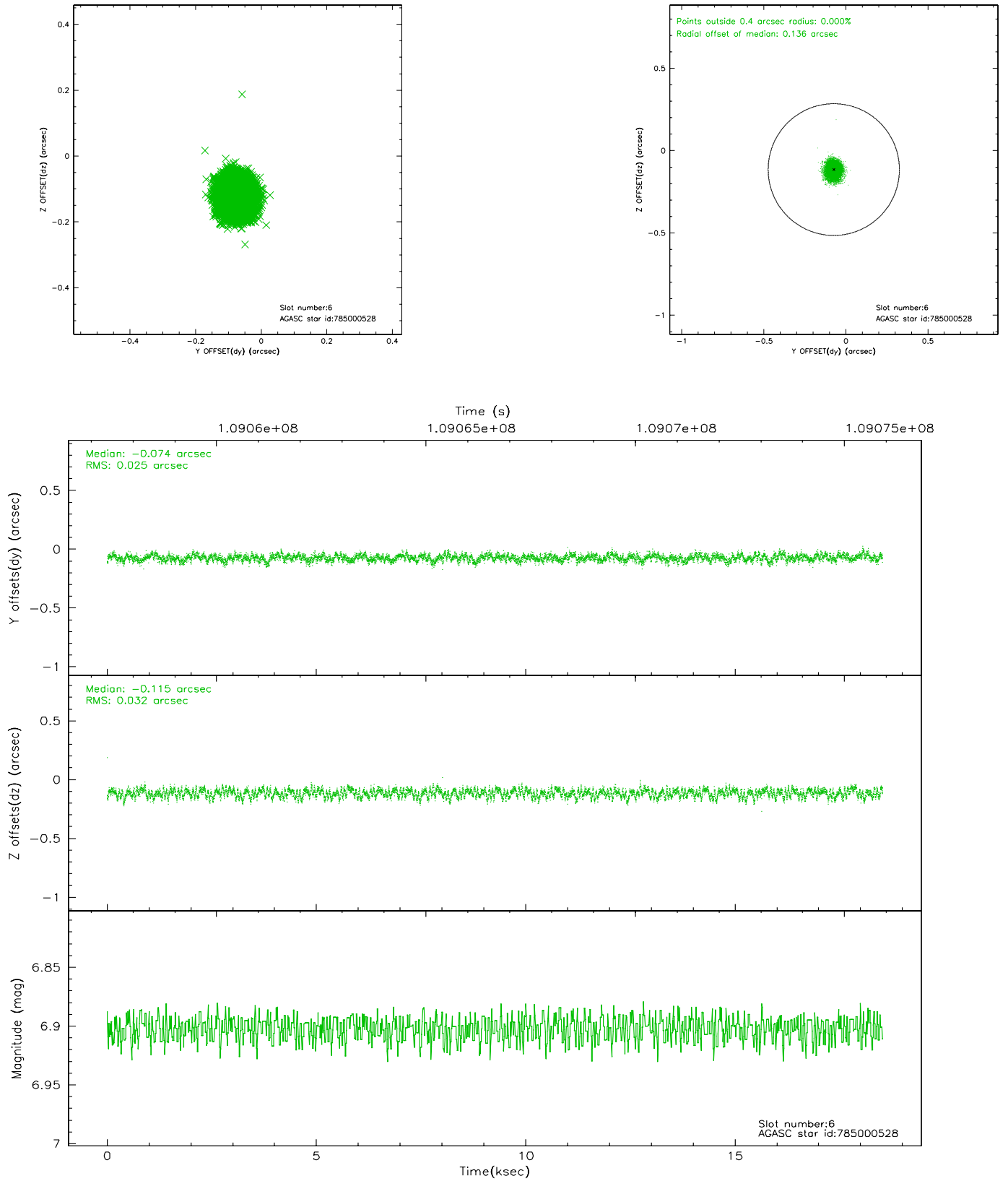
2.4.2 Slot 4



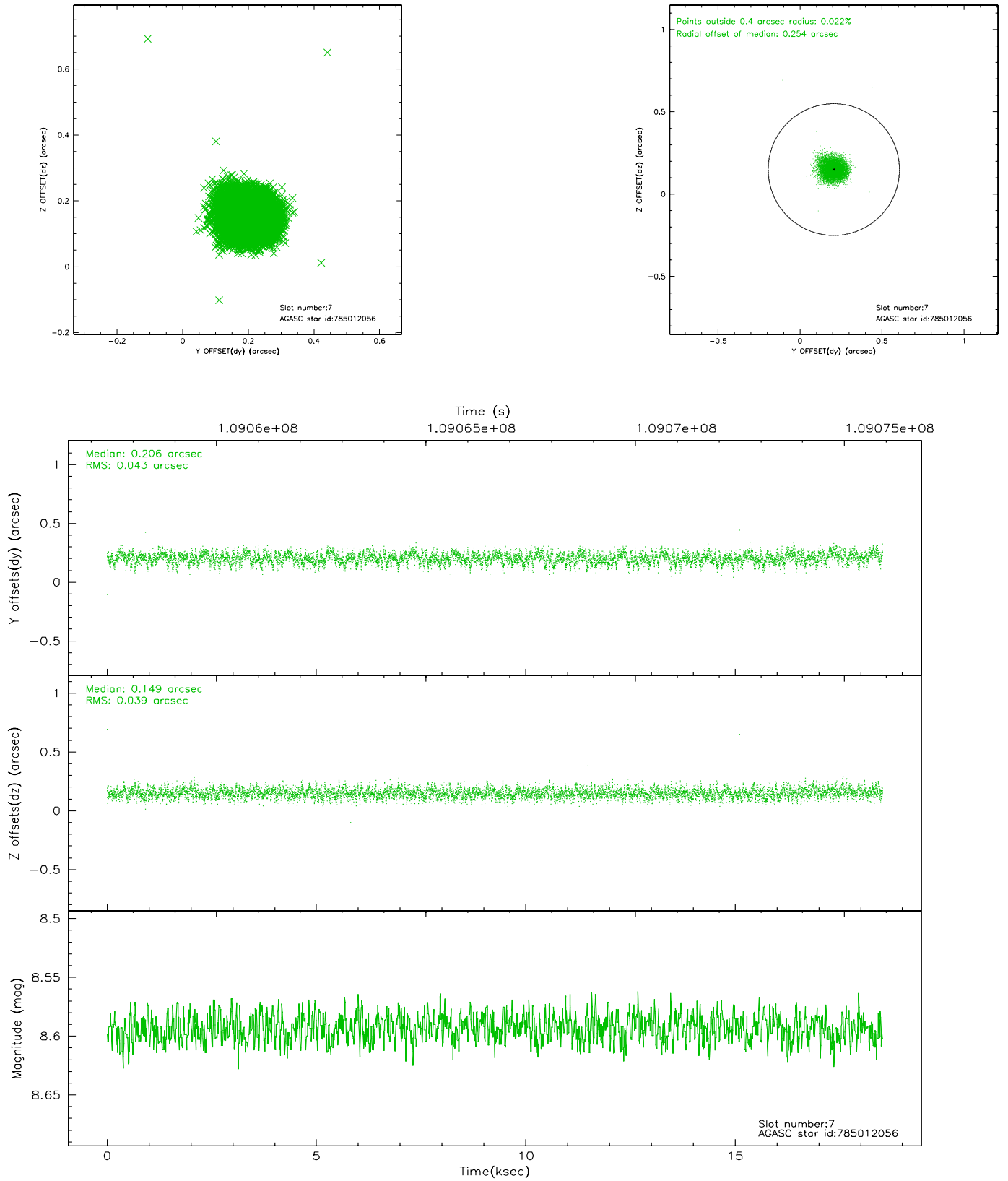
2.4.3 Slot 5



2.4.4 Slot 6

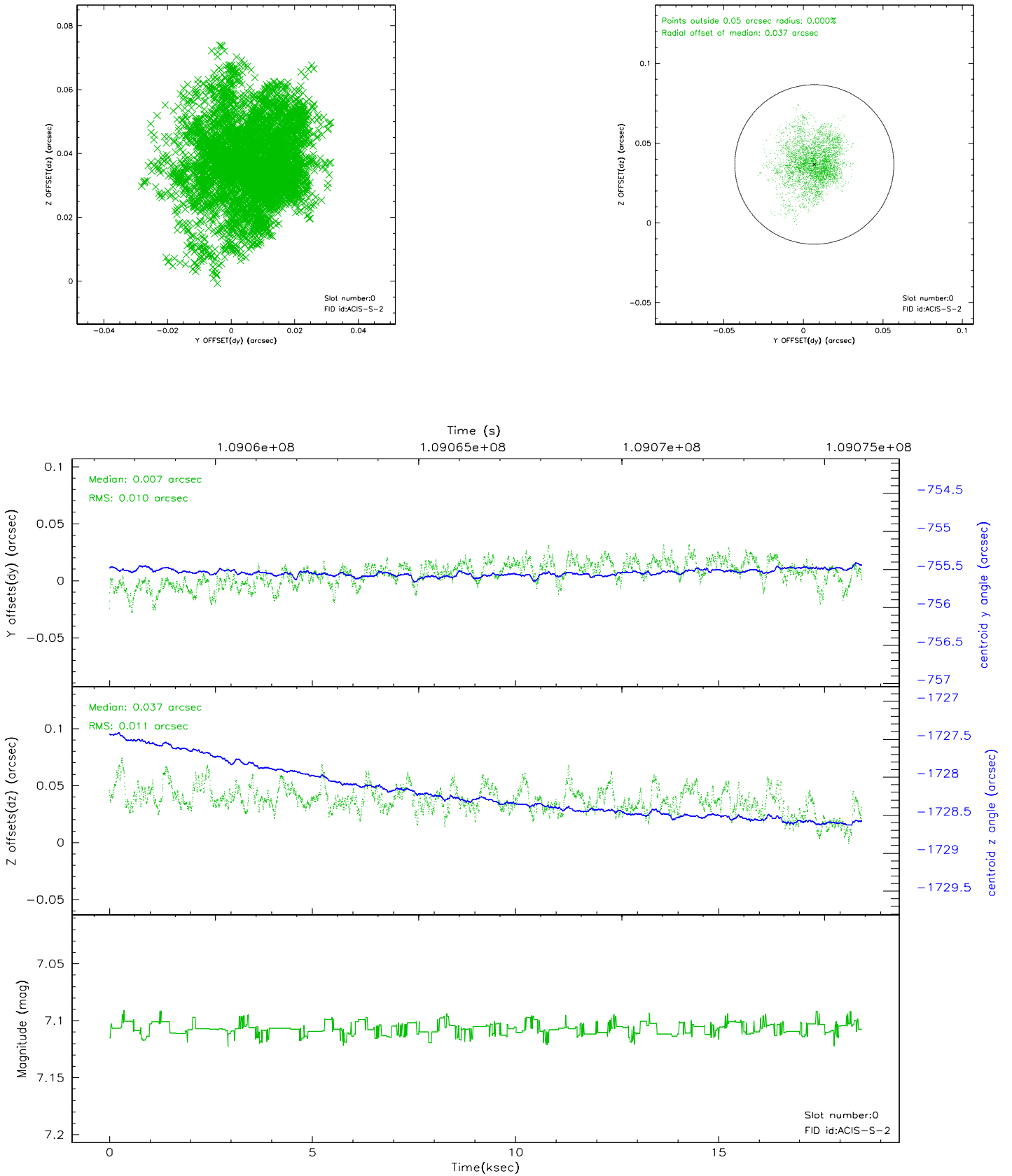


2.4.5 Slot 7

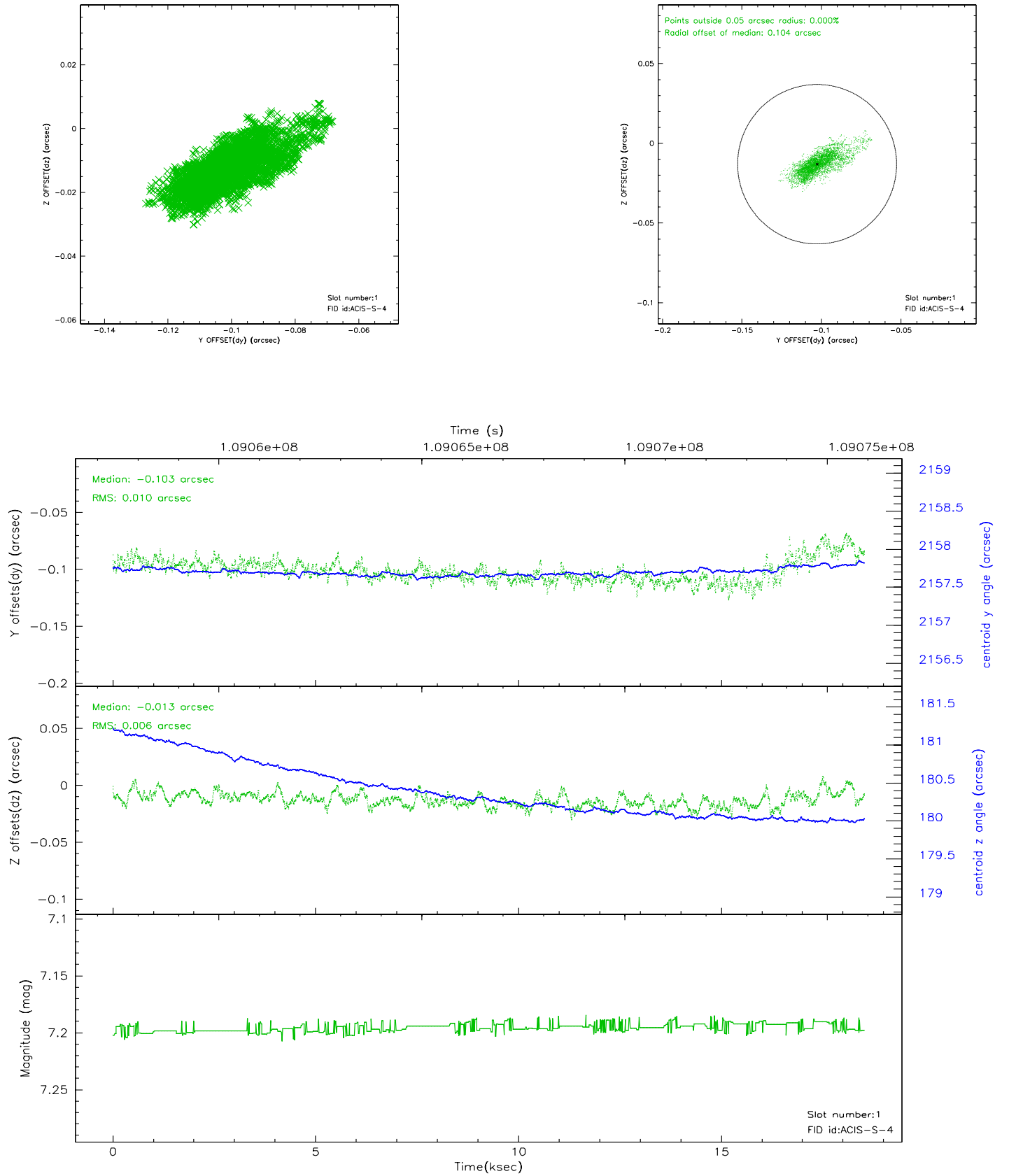


2.5 FID Slots

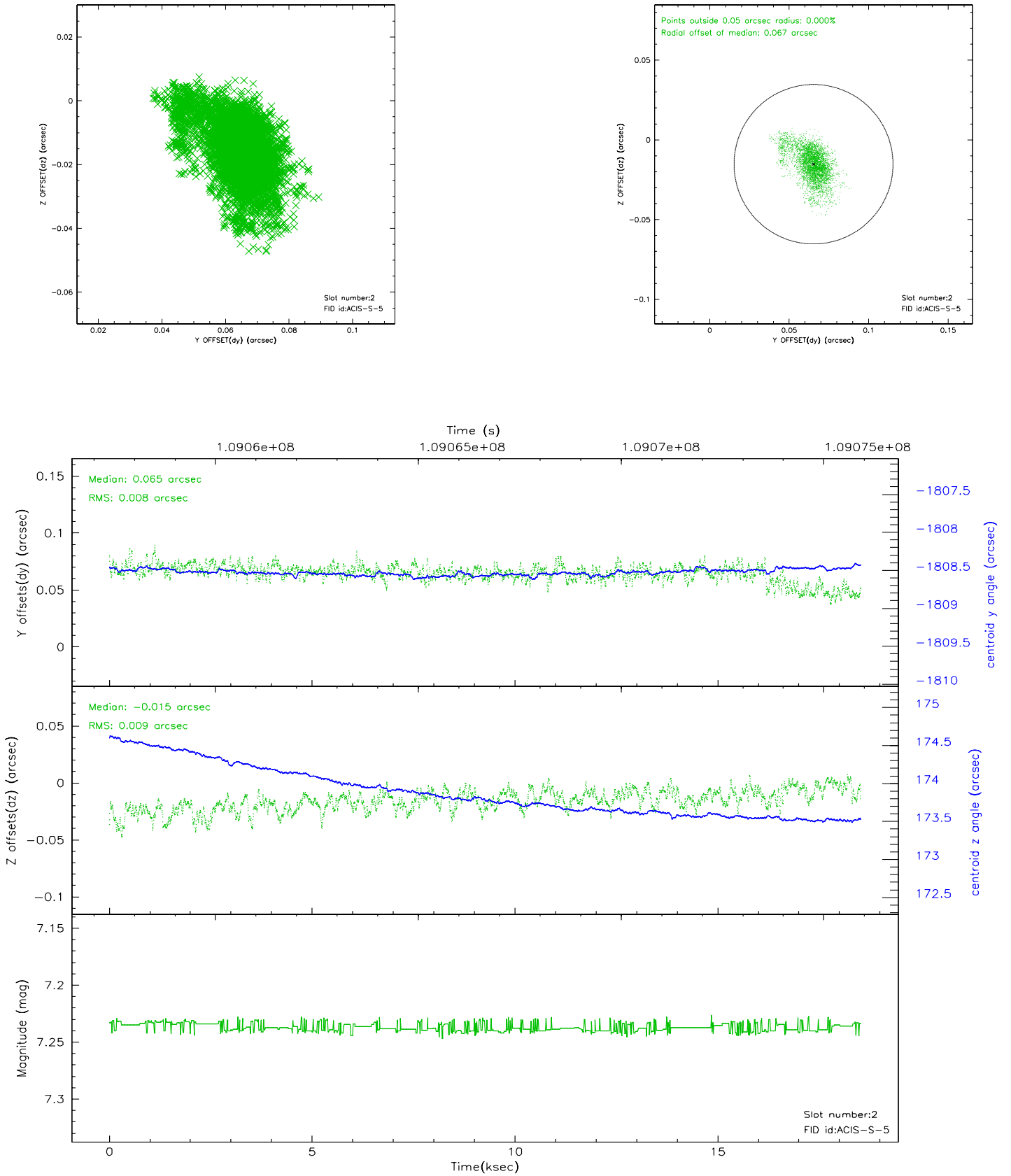
2.5.1 Slot 0



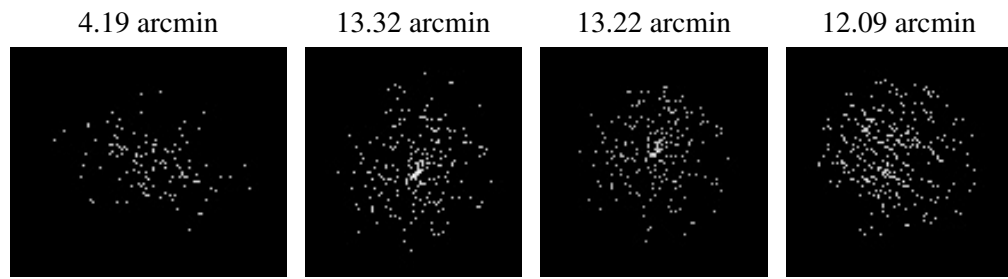
2.5.2 Slot 1



2.5.3 Slot 2



3 Point Sources



A Summary

A.1 Status

V&V Scientist	Beth Sundheim
V&V Date (YYYY-MM-DD)	2006.12.08
V&V Edition	1
V&V Disposition and Status	OK
V&V Charge Time	18.094

A.2 Comments