

V&V Reference Report

L2 ASCDS Version : 8.4.5

Observation 2230 - L2 Version 3
Chandra X-Ray Center

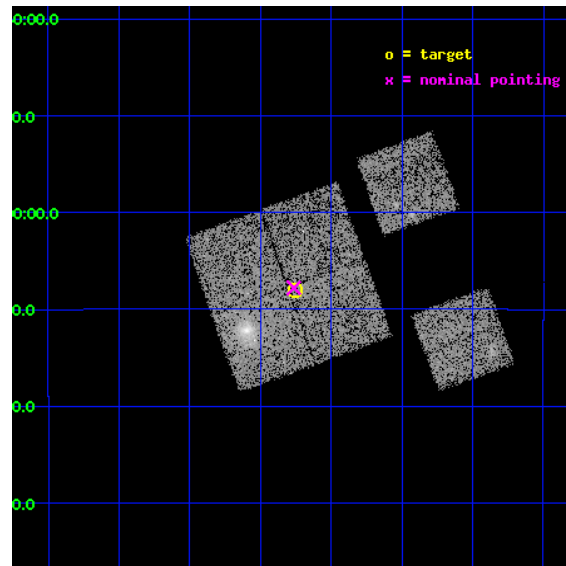
L2 Processing Date : Sep 6 2012

Contents

1	Front	2
2	OBI	3
2.1	OBI	3
2.1.1	Images	3
2.1.2	Bias	3
2.1.3	Parameters	4
2.1.4	Events	4
2.2	Compared Parameters	5
2.3	Aspect	6
2.4	Star Slots	9
2.4.1	Slot 3	9
2.4.2	Slot 4	10
2.4.3	Slot 5	11
2.4.4	Slot 6	12
2.4.5	Slot 7	13
2.5	FID Slots	14
2.5.1	Slot 0	14
2.5.2	Slot 1	15
2.5.3	Slot 2	16
A	Summary	17
A.1	Status	17
A.2	Comments	17

1 Front

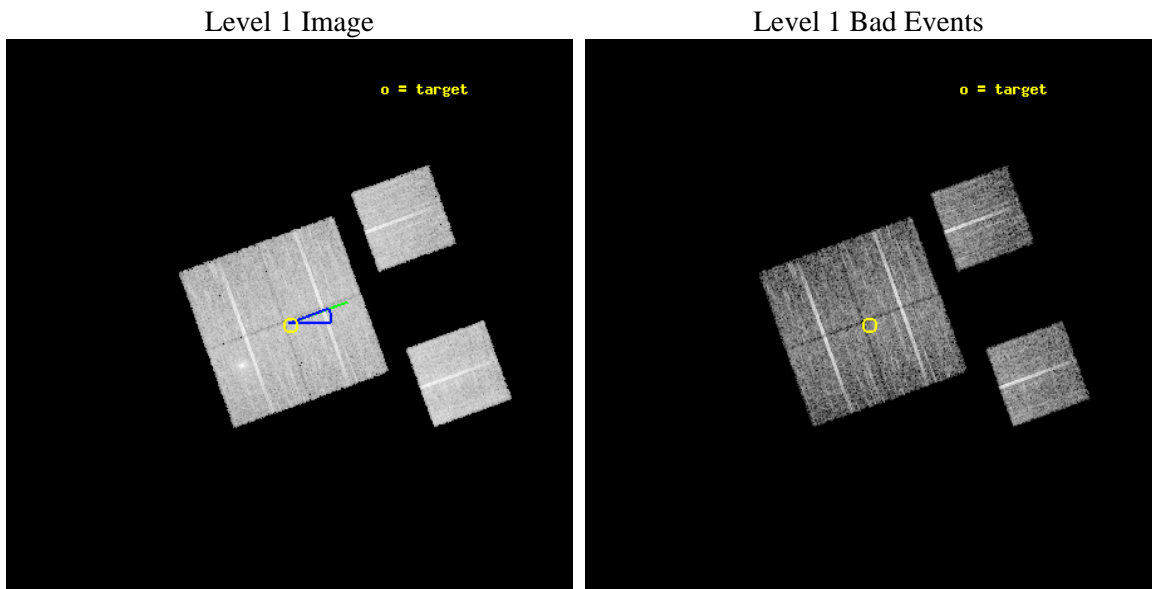
seq_num	800169	Sequence number
obs_id	2230	Observation id
title	SURVEY OF HARD POINT SOURCES IN GROUPS OF GALAXIES	Proposal title
observer	DR YASUSHI FUKAZAWA	Principal investigator
object	HCG62_NW	Source name
dtcycle	0	
cycle	P	events from which exps? Prim/Second/Both
ra_targ	193.1875	Observer's specified target RA [deg]
dec_targ	-9.133333	Observer's specified target Dec [deg]
ra_nom	193.1908250632	Nominal RA [deg]
dec_nom	-9.1298162705916	Nominal Dec [deg]
roll_nom	70.209239425526	Nominal Roll [deg]
revision	3	Processing version of data
ontime	9465.6000088006	Sum of GTIs [s]
livetime	9345.7408819891	Livetime [s]
ontime0	9465.6000088006	Sum of GTIs [s]
ontime1	9465.6000088006	Sum of GTIs [s]
ontime2	9465.6000088006	Sum of GTIs [s]
ontime3	9465.6000088006	Sum of GTIs [s]
ontime6	9465.5797957182	Sum of GTIs [s]
ontime8	9465.6000088006	Sum of GTIs [s]
l2events	42246	Number of level 2 events



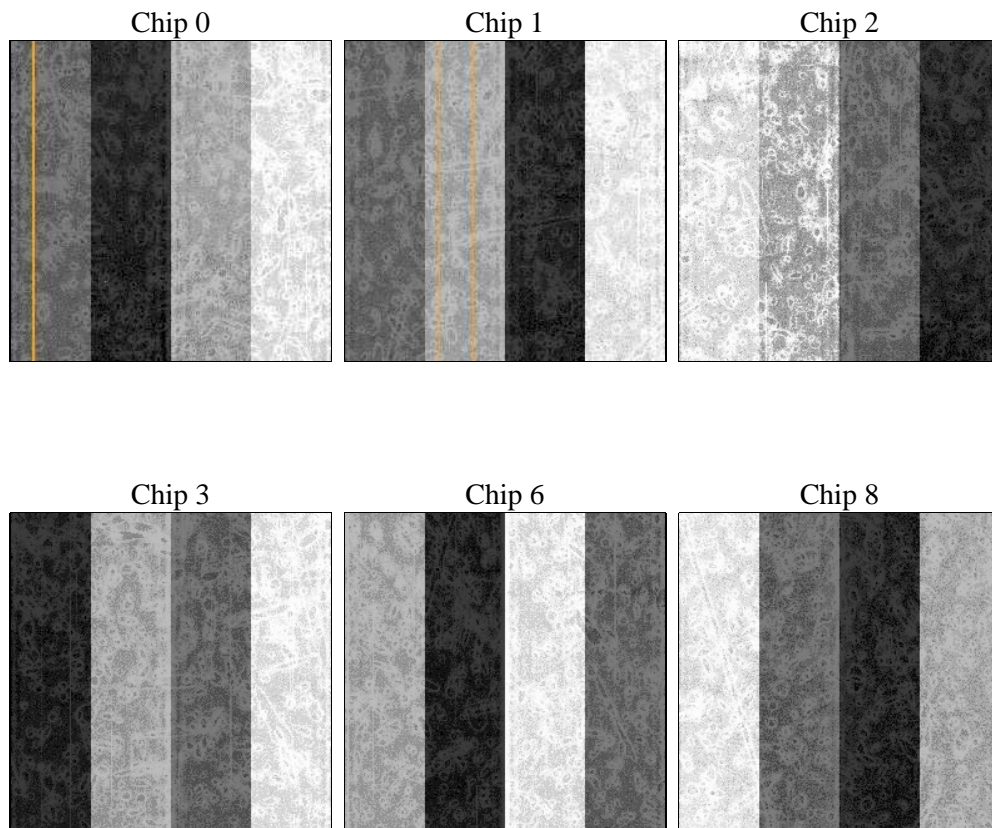
2 OBI

2.1 OBI

2.1.1 Images



2.1.2 Bias



2.1.3 Parameters

obi_num	0	Obi number	sched_exp_time	9500.000000	[s] Scheduled observation exposure time
ascdsver	8.4.5	Processing system revision	ontime	9465.6000088006	Sum of GTIs [s]
caldsver	4.5.1.1	 	ontime0	9465.6000088006	Sum of GTIs [s]
date	2012-09-06T09:29:51	Date and time of file creation	ontime1	9465.6000088006	Sum of GTIs [s]
revision	3	Processing version of data	ontime2	9465.6000088006	Sum of GTIs [s]
			ontime3	9465.6000088006	Sum of GTIs [s]
			ontime6	9465.5797957182	Sum of GTIs [s]
			ontime8	9465.6000088006	Sum of GTIs [s]
			l1events	352871	Number of level 1 events

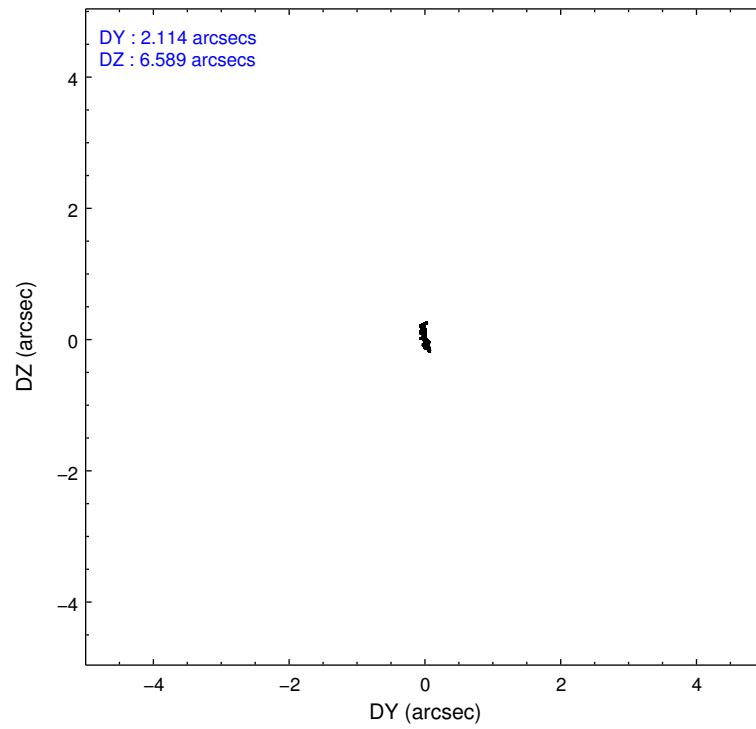
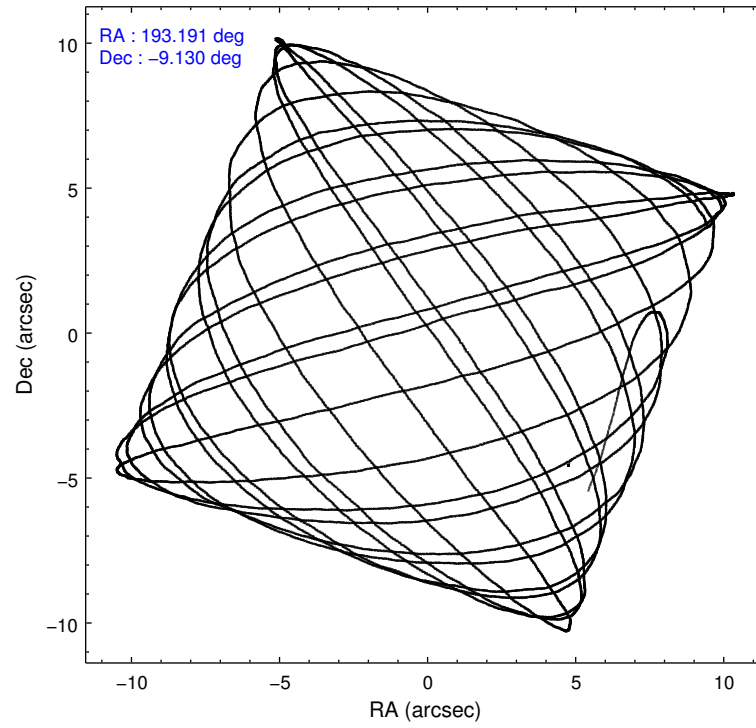
2.1.4 Events

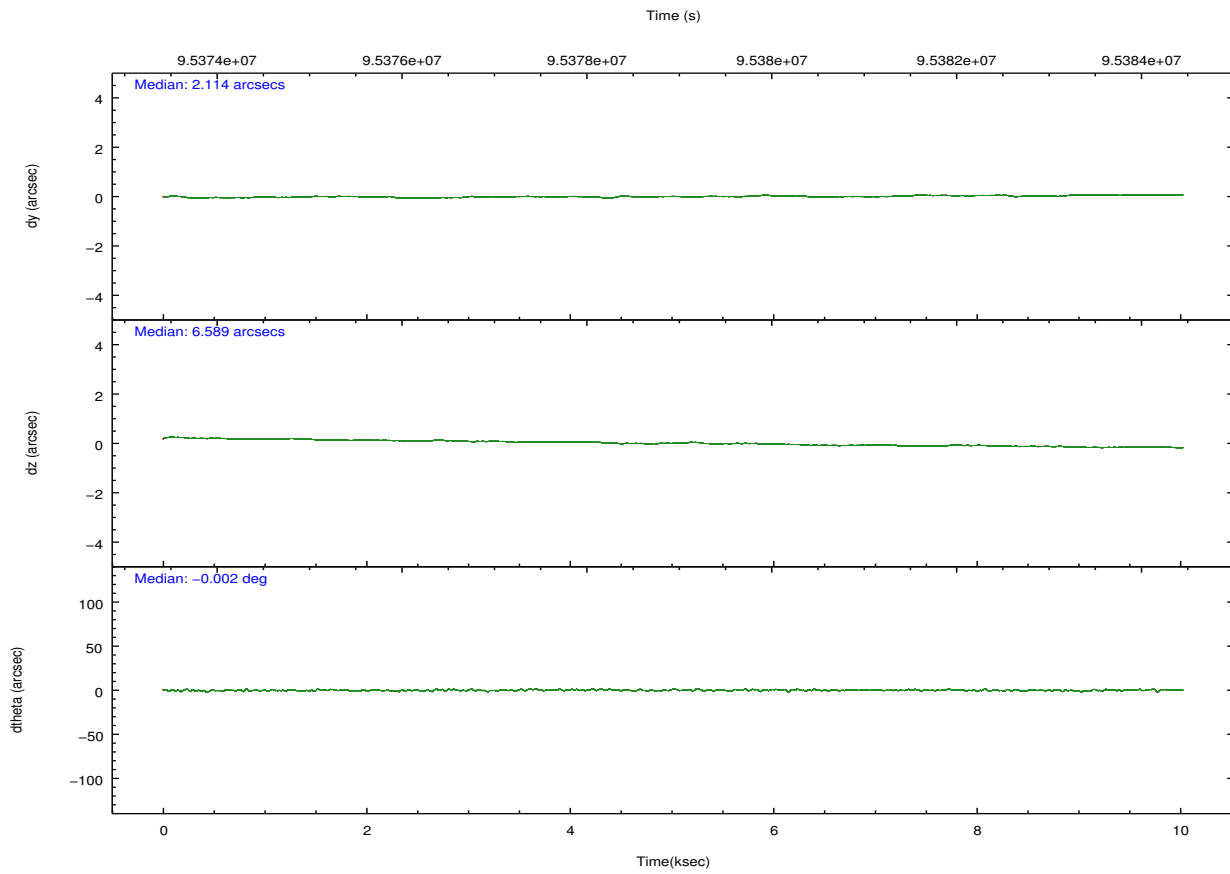
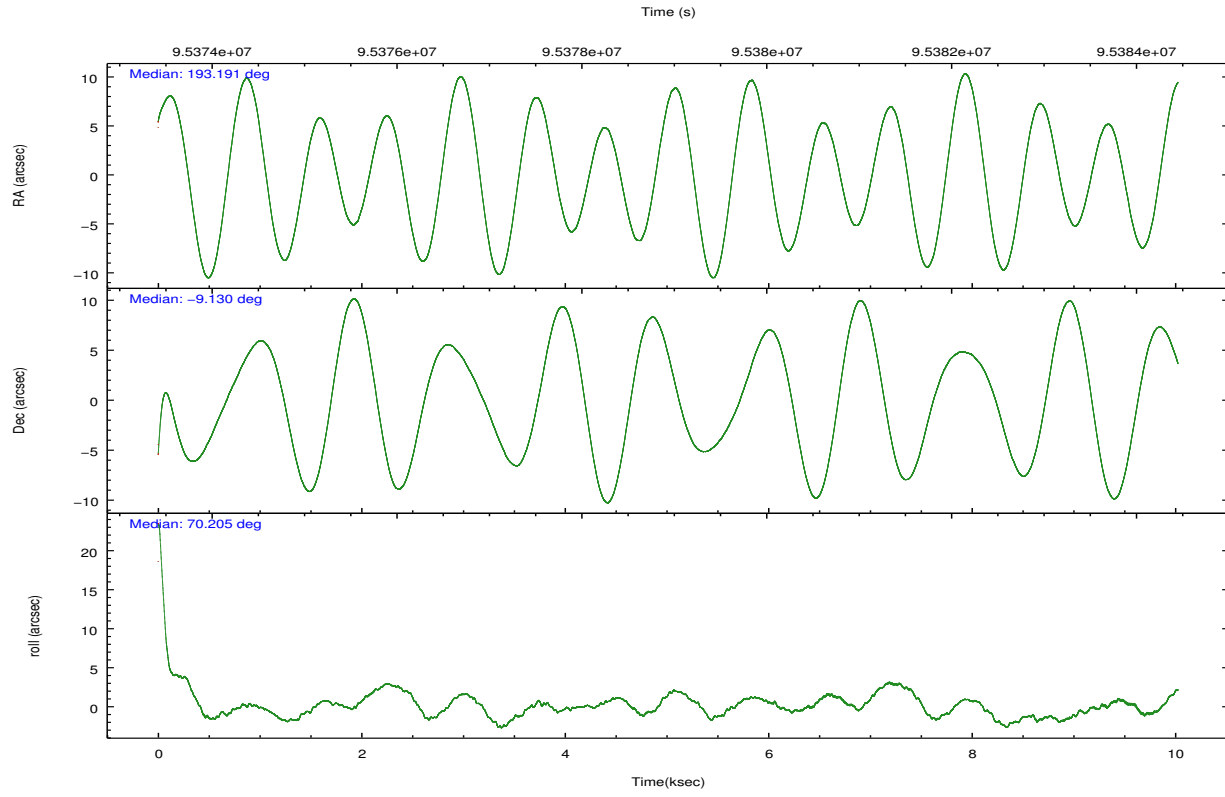
	ccd 0	ccd 1	ccd 2	ccd 3	ccd 6	ccd 8		ccd 0	ccd 1	ccd 2	ccd 3	ccd 6	ccd 8
level 1 events	50917	58059	56111	57576	56455	73753	grade 0 events	3640	7756	3243	3263	2968	4492
rejected events	43413	45418	49291	50616	49591	59202		7%	13%	5%	5%	5%	6%
rejected %	85%	78%	87%	87%	87%	80%	grade 1 events	34	44	25	29	22	31
								0%	0%	0%	0%	0%	0%
							grade 2 events	1469	1818	1406	1352	1290	3135
								2%	3%	2%	2%	2%	4%
							grade 3 events	642	885	557	595	691	1585
								1%	1%	0%	1%	1%	2%
							grade 4 events	601	825	568	608	667	1437
								1%	1%	1%	1%	1%	1%
							grade 5 events	2027	2136	1925	2158	2335	2973
								3%	3%	3%	3%	4%	4%
							grade 6 events	1155	1360	1048	1145	1251	3904
								2%	2%	1%	1%	2%	5%
							grade 7 events	41349	43235	47339	48426	47231	56196
								81%	74%	84%	84%	83%	76%

2.2 Compared Parameters

Parameter	Planned	Actual	Parameter	Planned	Actual
Instrument	ACIS	ACIS	Obspar format version number	7	7
Detector	ACIS-012368	ACIS-012368	Obspar file type	PREDICTED	ACTUAL
Grating	NONE	NONE	Obspar update status	NONE	UPDATED
Data mode	FAINT	FAINT	Number of optional ACIS chips dropped	0	0
Observation mode	POINTING	POINTING	On-chip summing requested	N	N
[deg] Pointing RA	193.195712	193.1908250632031	Subarray requested	NONE	NONE
[deg] Pointing Dec	-9.156855	-9.129816270591578	Alternating exposures requested	N	N
[deg] Pointing Roll	70.001312	70.20923942552598	[s] Primary exposure time	0.000000	3.2
[deg] Roll angle	80.000000	80.000000			
[deg] Roll tolerance	10.000000	10.000000			
Roll constraint allows 180D rotation	N	N			
[mm] SIM focus pos	-0.782348	-0.7809083437167272			
[mm] SIM defocus	0	0.001439871863259334			
[mm] SIM translation stage pos	-233.592463	-233.5874344608287			
[mm] SIM translation stage offset	0	-0.005018542100998502			
[s] Observation start time (MET)	95374444.184000	95373319.752299			
Observation start date	2001-01-08T20:53:00	2001-01-08T20:35:19			
[s] Observation end time (MET)	95383944.184000	95384265.72771899			
Observation end date	2001-01-08T23:31:20	2001-01-08T23:37:45			
Read mode	TIMED	TIMED			

2.3 Aspect



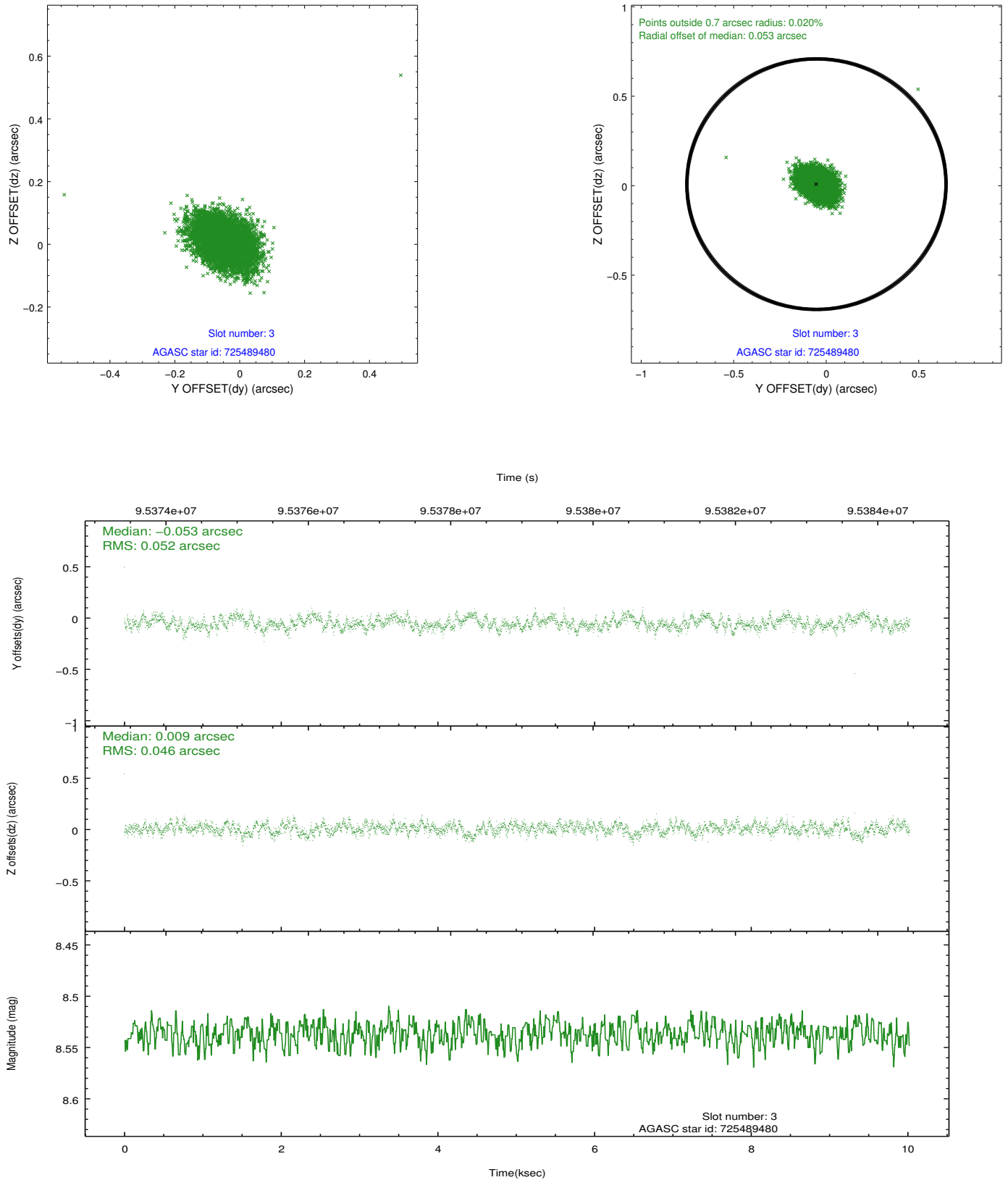


Slot Statistics

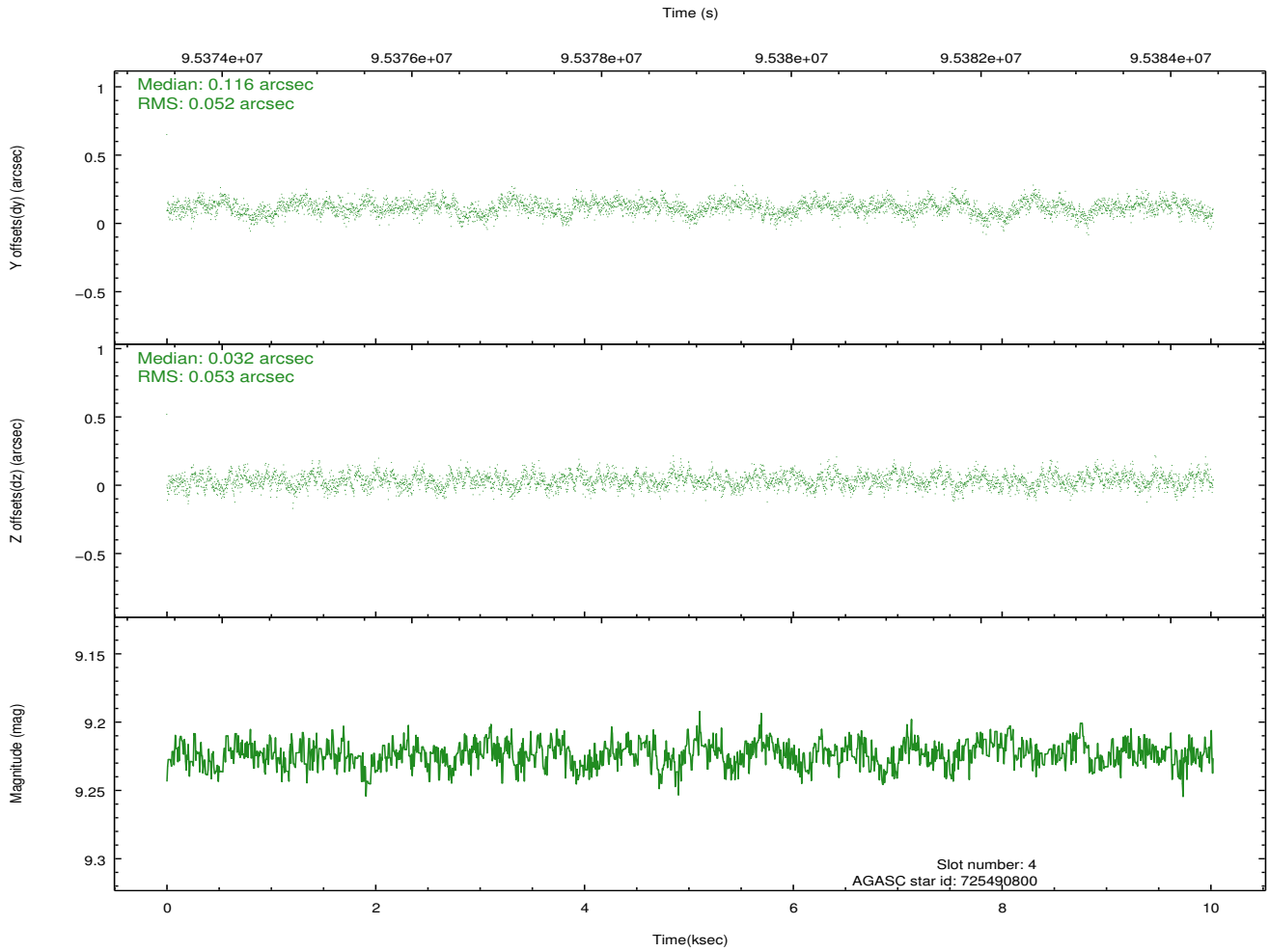
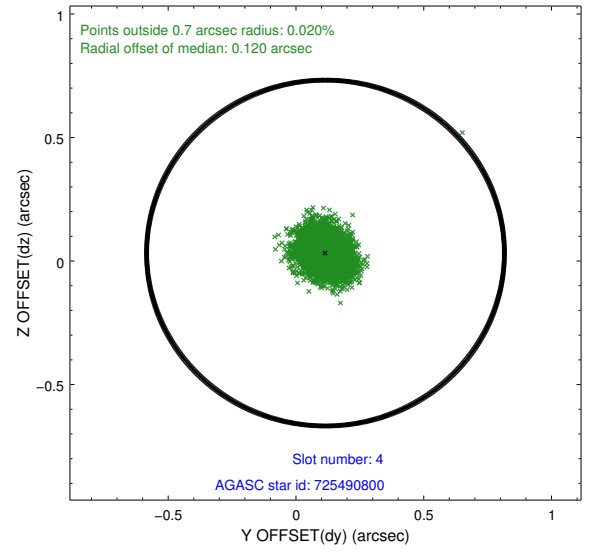
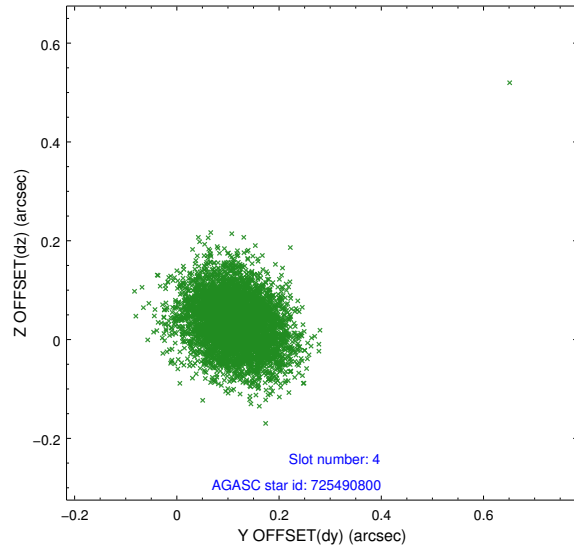
slot	status	id	mag	n_pts	med_dy	med_dz	dr1	dr2	ra	dec	mean_y	mean_z
0	FID	ACIS-I-2	7.16	2446	-0.043	-0.069	0.008	0.015	0.000000	0.000000	-756.52	-836.42
1	FID	ACIS-I-4	7.18	2445	-0.015	0.050	0.006	0.011	0.000000	0.000000	2157.33	1069.61
2	FID	ACIS-I-5	7.23	2445	-0.044	0.088	0.009	0.015	0.000000	0.000000	-1809.66	1068.10
3	GUIDE	725489480	8.54	4889	-0.053	0.009	0.073	0.119	193.751862	-9.177344	605.70	-1883.27
4	GUIDE	725490800	9.22	4889	0.116	0.032	0.078	0.127	193.423936	-9.618178	-1283.12	-1330.00
5	GUIDE	725490208	9.18	4890	0.112	0.075	0.064	0.104	193.035827	-9.691293	-2001.89	-125.47
6	GUIDE	725490720	9.37	4879	-0.214	0.063	0.083	0.134	193.425382	-8.740613	1687.13	-255.64
7	GUIDE	725490560	9.93	4885	0.033	-0.179	0.120	0.194	192.815046	-9.203581	-620.78	1212.85

2.4 Star Slots

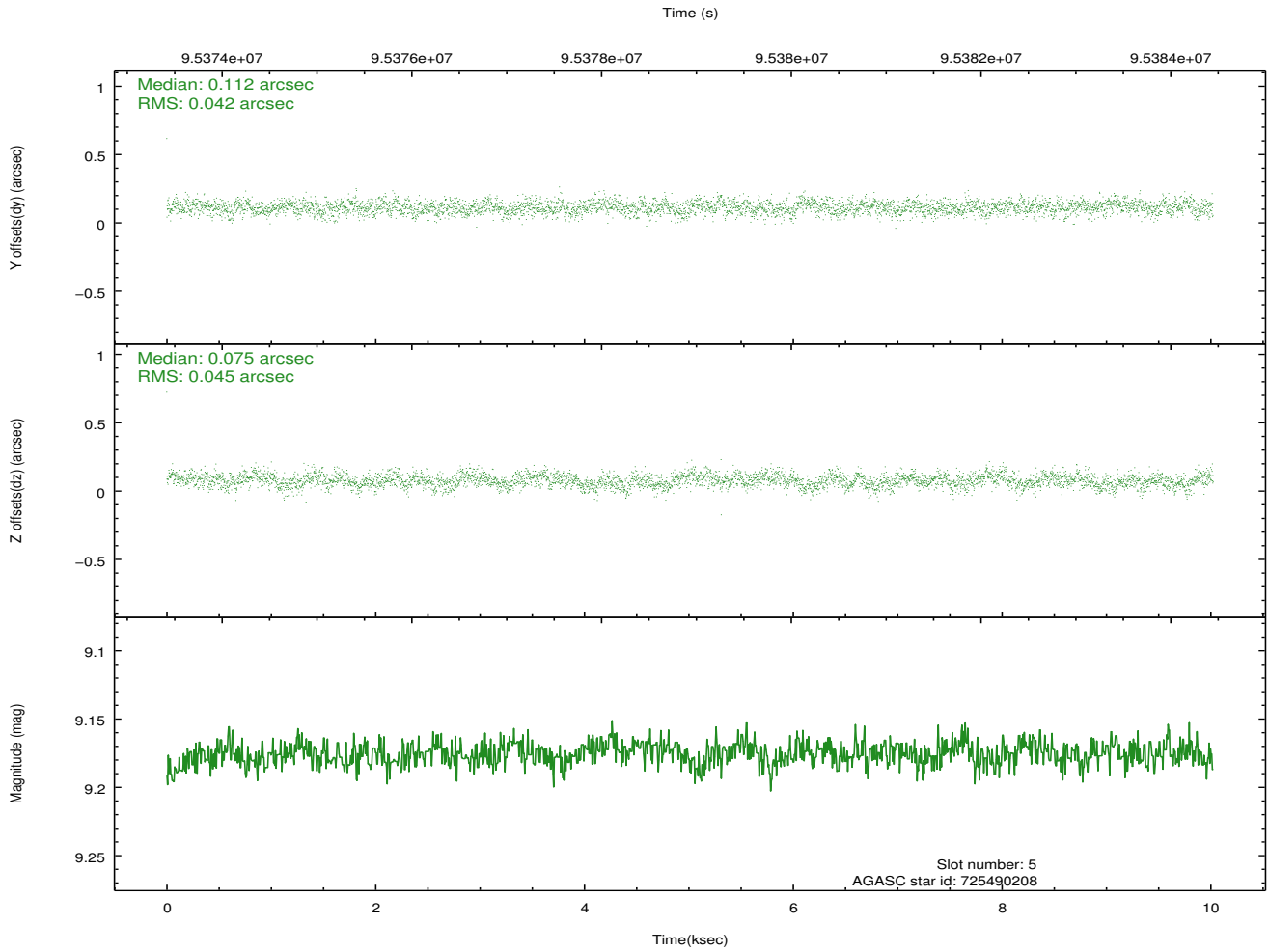
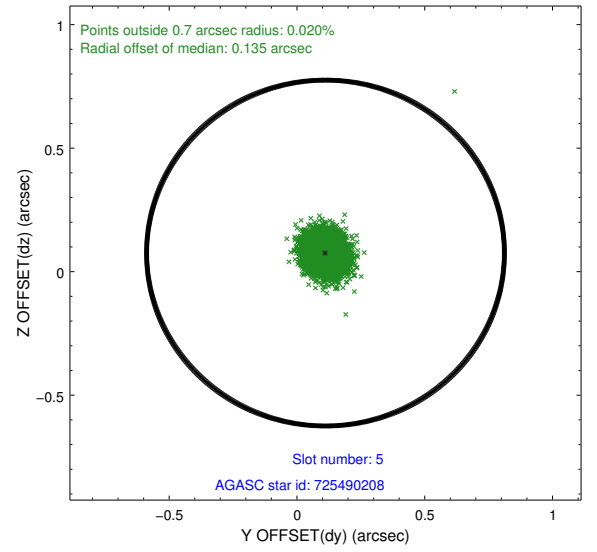
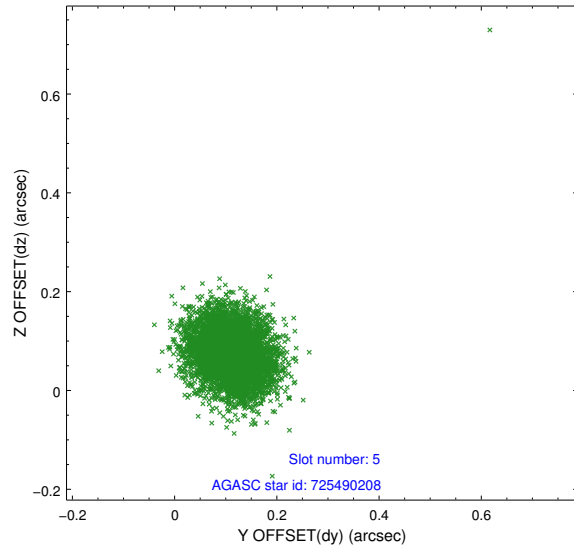
2.4.1 Slot 3



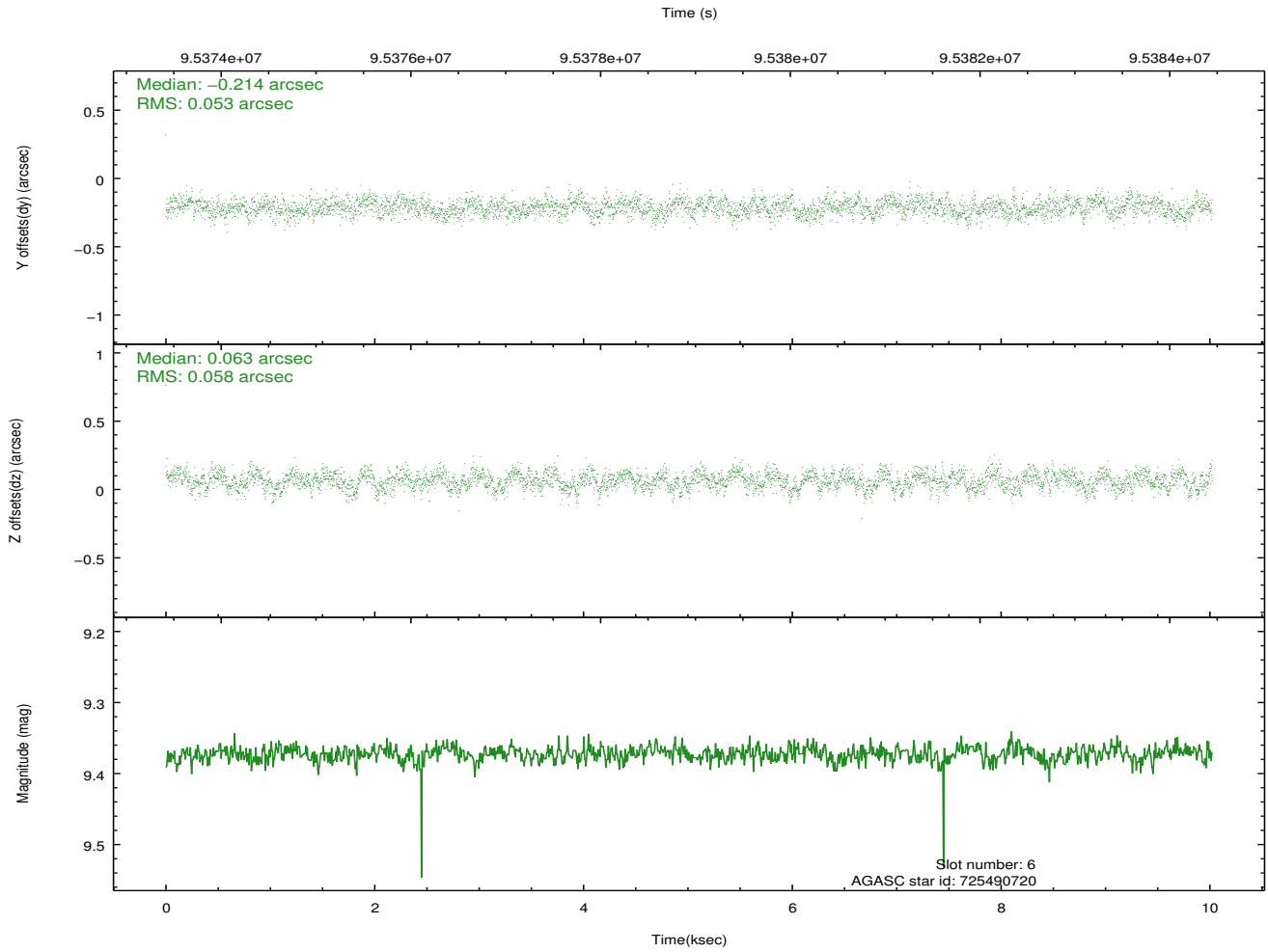
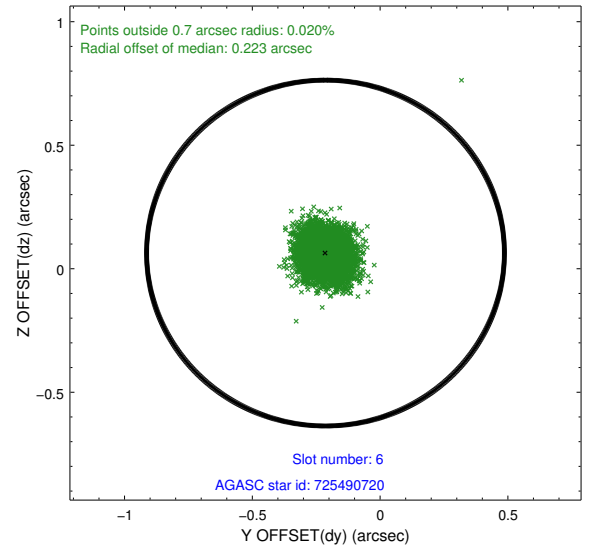
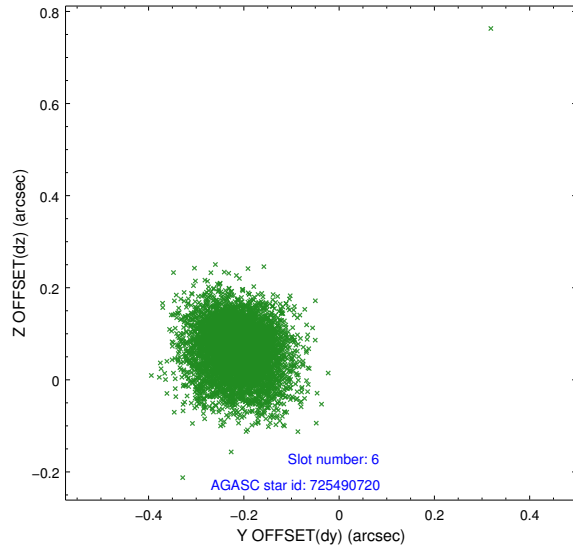
2.4.2 Slot 4



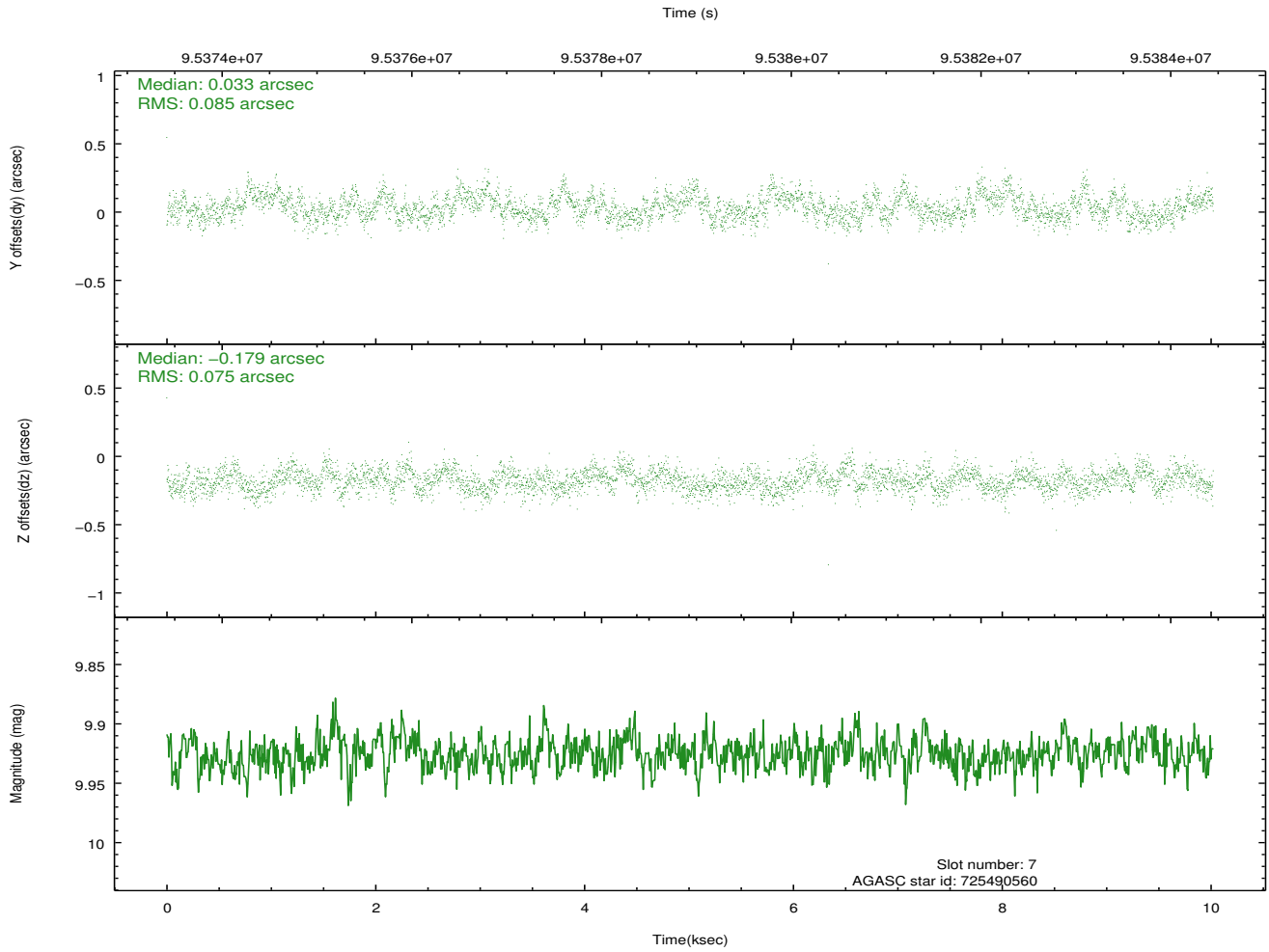
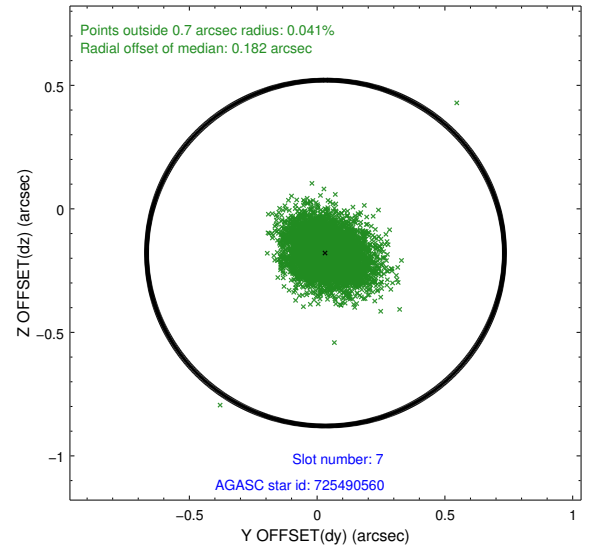
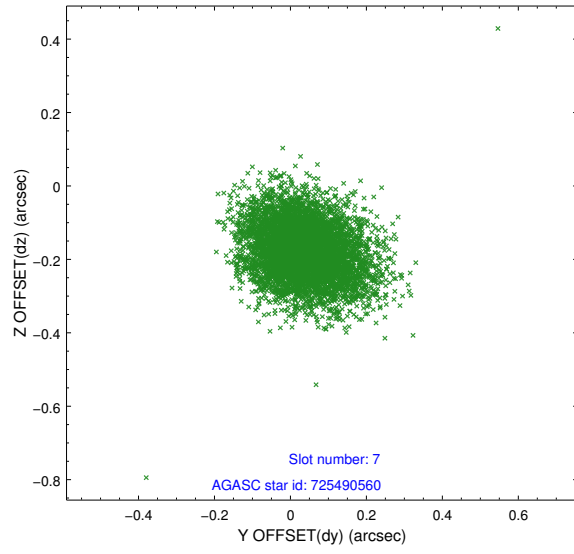
2.4.3 Slot 5



2.4.4 Slot 6

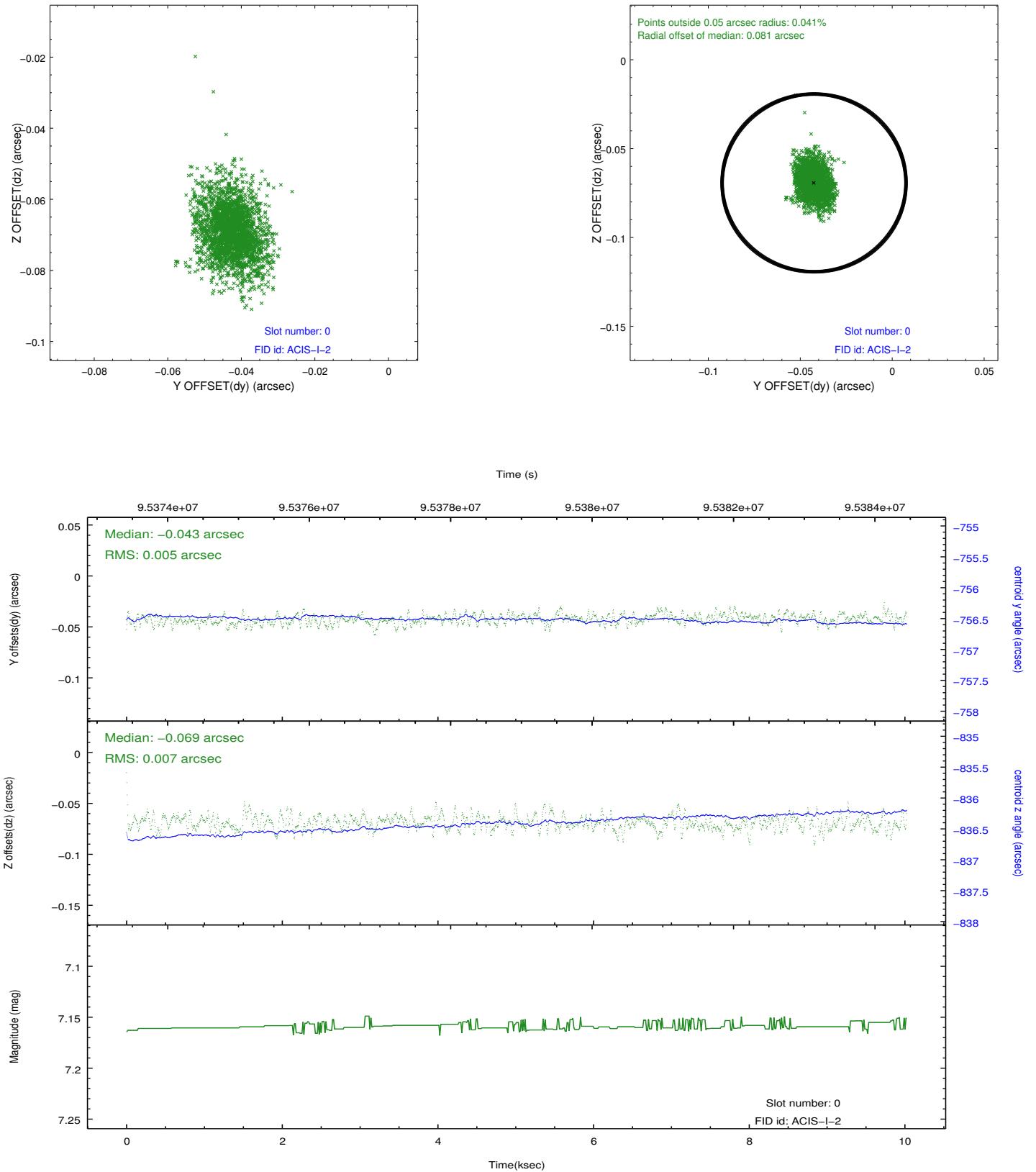


2.4.5 Slot 7

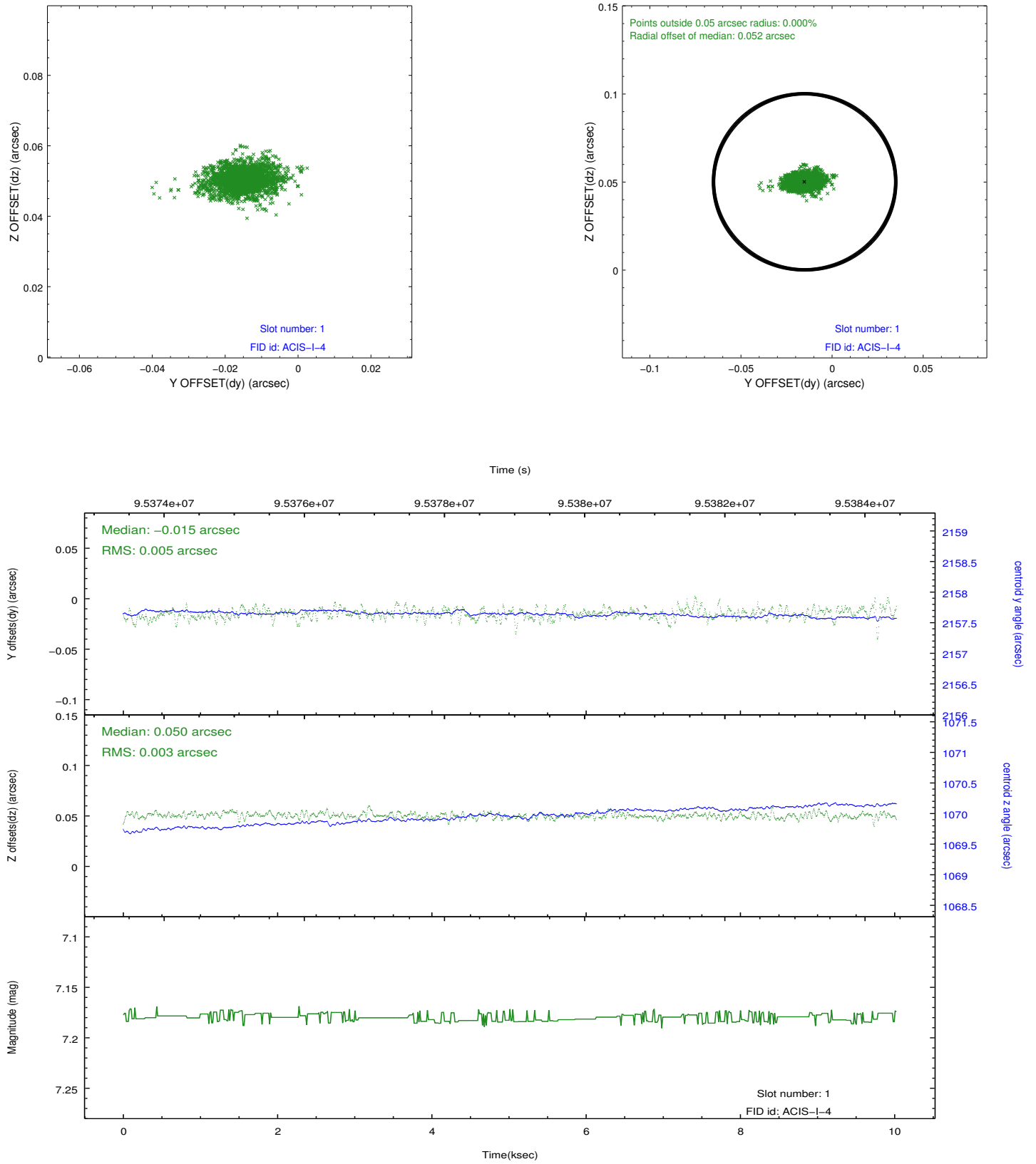


2.5 FID Slots

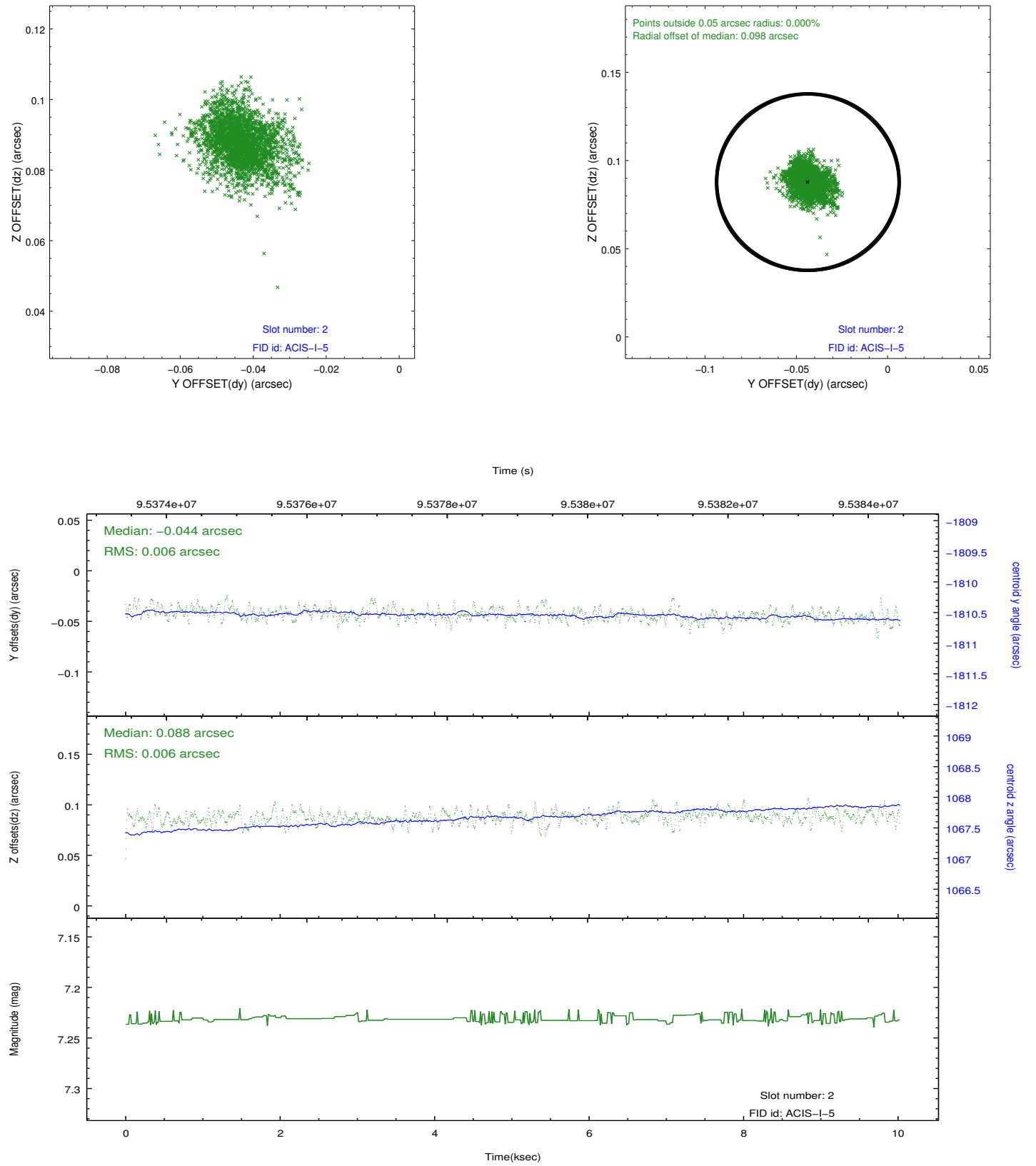
2.5.1 Slot 0



2.5.2 Slot 1



2.5.3 Slot 2



A Summary

A.1 Status

V&V Scientist	Jen Lauer
V&V Date (YYYY-MM-DD)	2012.09.14
V&V Edition	1
V&V Disposition and Status	OK
V&V Charge Time	9.468

A.2 Comments

Roll constraint met.