

V&V Reference Report

L2 ASCDS Version : 7.6.10

Observation 2218 - L2 Version 001
Chandra X-Ray Center

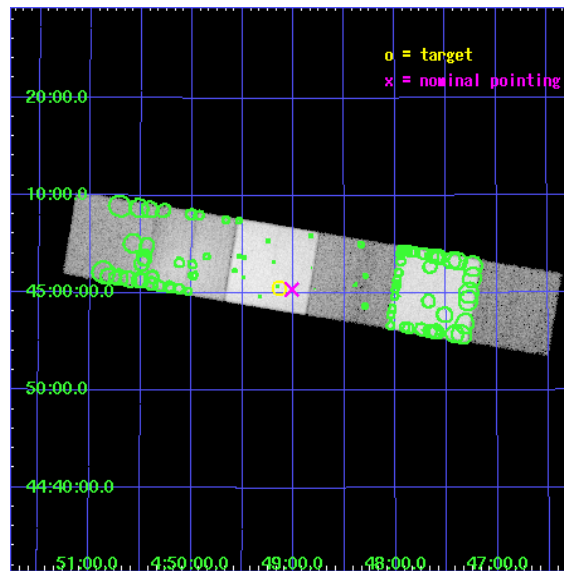
L2 Processing Date : Jun 19 2007

Contents

1	Front	2
2	OBI	3
2.1	OBI	3
2.1.1	Images	3
2.1.2	Bias	3
2.1.3	Parameters	4
2.1.4	Events	4
2.2	Compared Parameters	5
2.3	Aspect	6
2.4	Star Slots	9
2.4.1	Slot 3	9
2.4.2	Slot 4	10
2.4.3	Slot 5	11
2.4.4	Slot 6	12
2.4.5	Slot 7	13
2.5	FID Slots	14
2.5.1	Slot 0	14
2.5.2	Slot 1	15
2.5.3	Slot 2	16
3	Point Sources	17
A	Summary	18
A.1	Status	18
A.2	Comments	18

1 Front

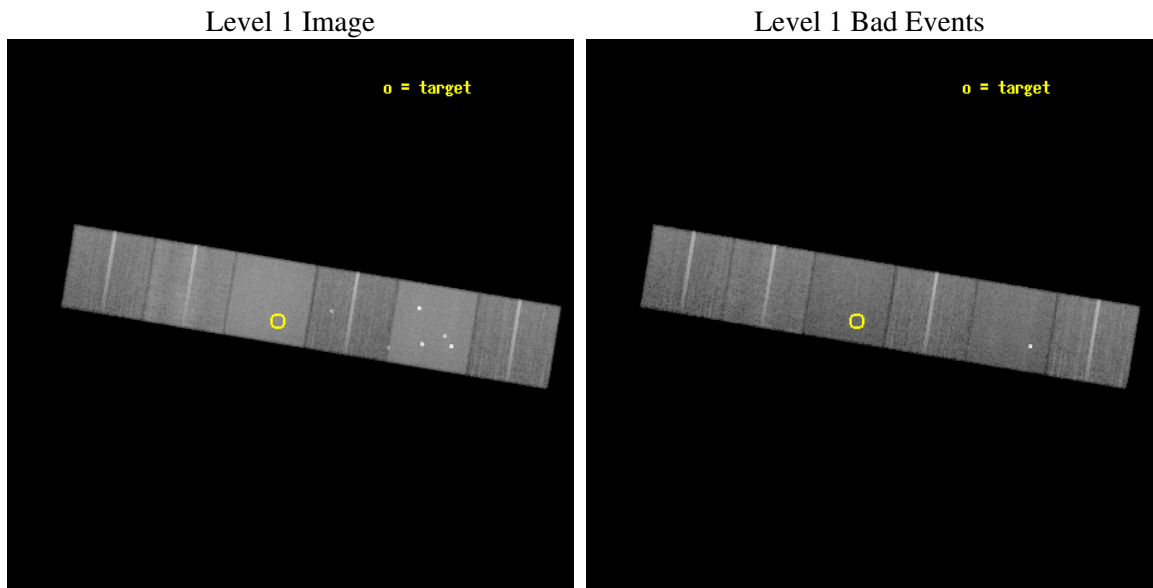
seq_num	800157
obs_id	2218
title	JET-INTRACLUSTER MEDIUM INTERACTIONS OF THE RADIO GALAXY 3C 129
observer	Dr. Daniel Harris
object	3C129
dtcycle	0
cycle	P
ra_targ	72.283333
dec_targ	45.008333
ra_nom	72.253804046653
dec_nom	45.006703681303
roll_nom	189.41082838994
revision	2
ontime	31865.600029677
livetime	31462.098614941
ontime4	31862.359059438
ontime5	31865.600029677
ontime6	31865.600029677
ontime7	31865.600029677
ontime8	31865.600029677
ontime9	31865.600029677
l2events	487628



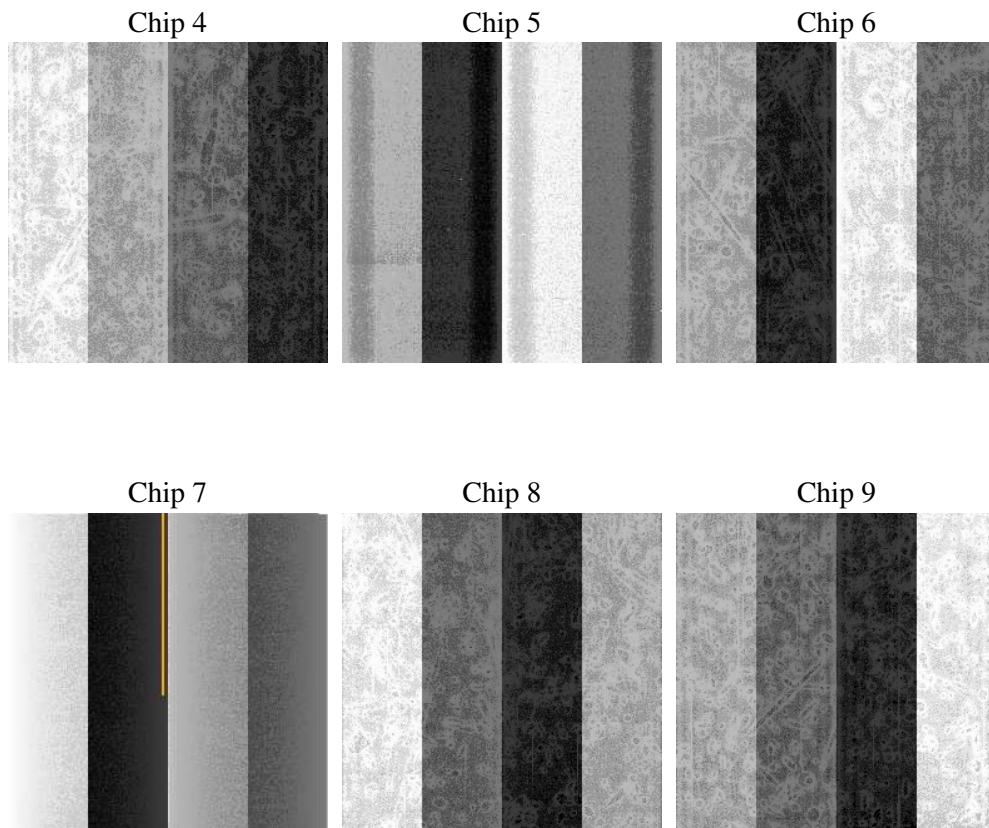
2 OBI

2.1 OBI

2.1.1 Images



2.1.2 Bias



2.1.3 Parameters

obi_num	0
ascdsver	7.6.10
caldsver	3.4.0
date	2007-06-19T23:10:10
revision	2

sched_exp_time	31704.215000
ontime	31865.600029677
ontime4	31862.359059438
ontime5	31865.600029677
ontime6	31865.600029677
ontime7	31865.600029677
ontime8	31865.600029677
ontime9	31865.600029677
l1events	1560111

2.1.4 Events

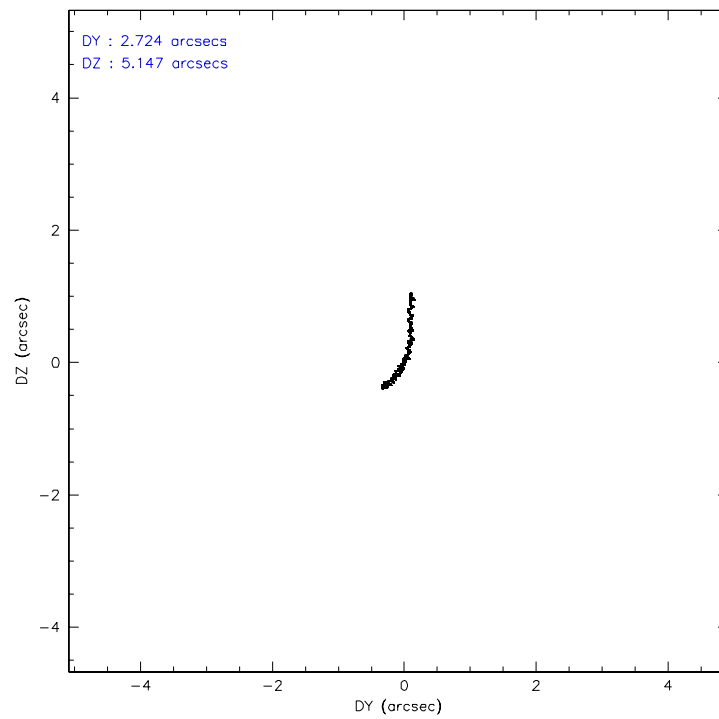
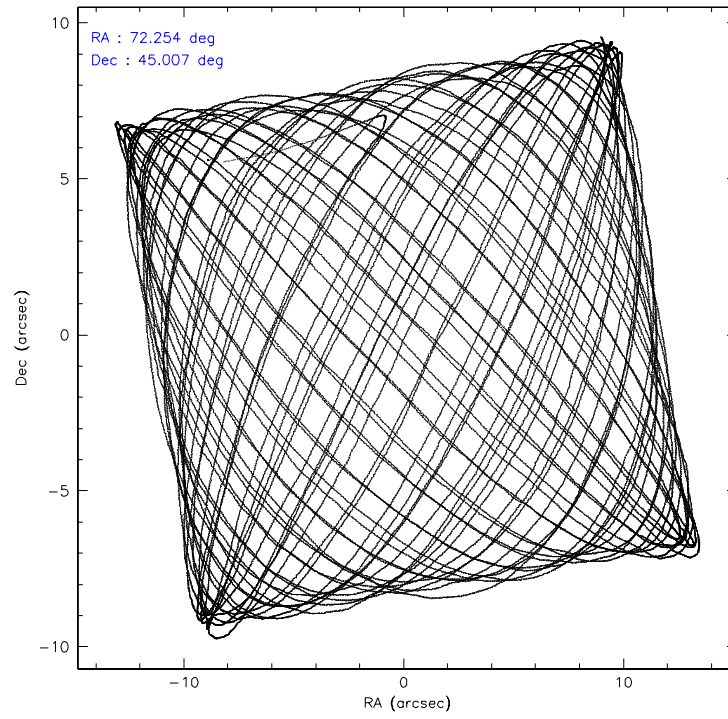
	ccd 4	ccd 5	ccd 6	ccd 7	ccd 8	ccd 9
level 1 events	210653	326441	199349	320534	298168	204966
rejected events	185788	150129	167576	140224	189394	164273
rejected %	88%	45%	84%	43%	63%	80%

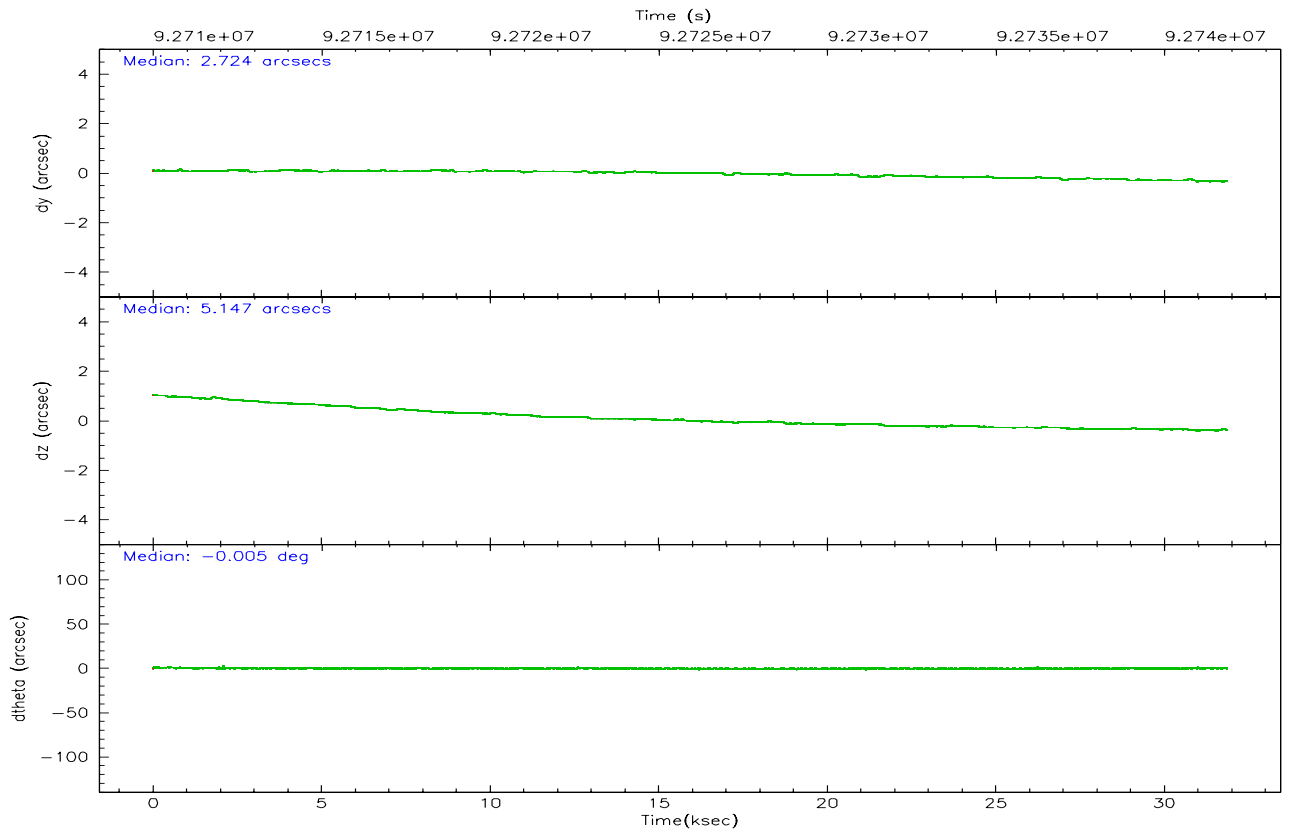
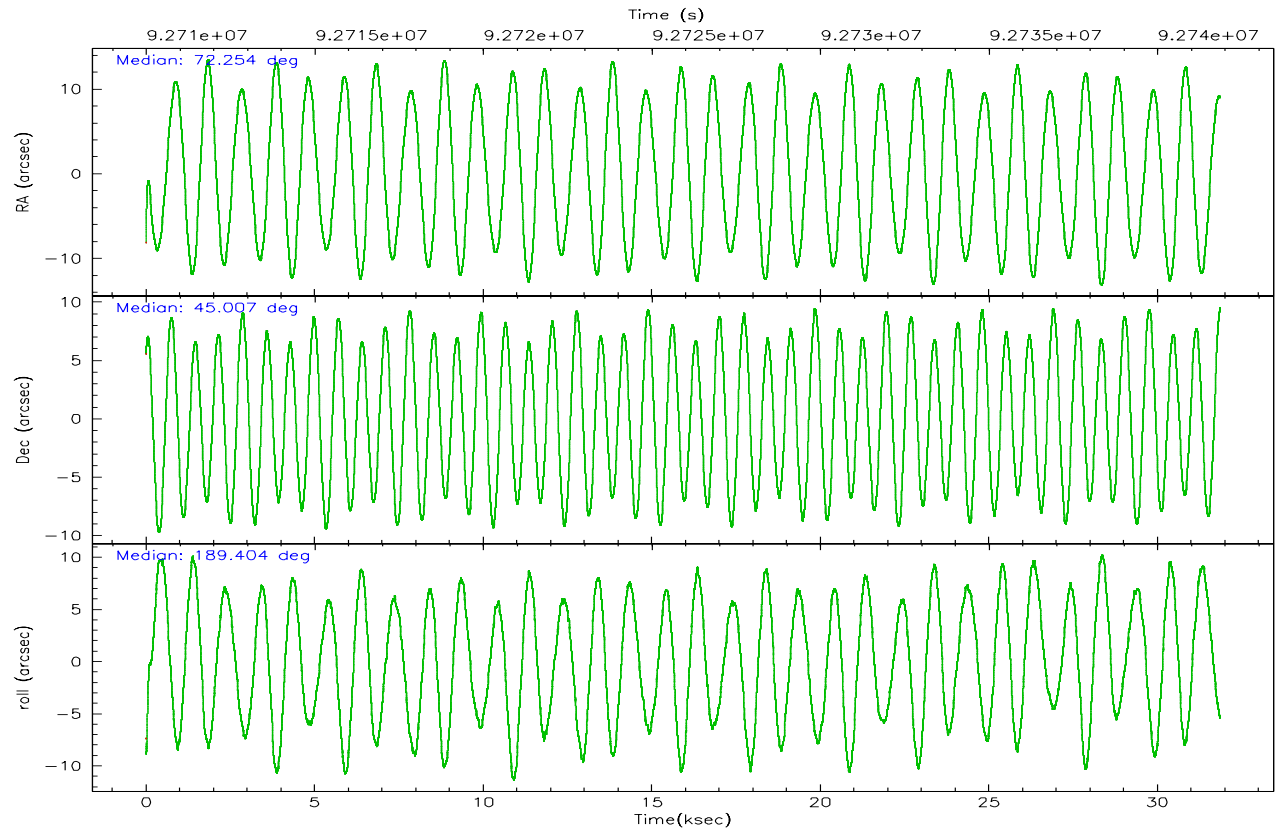
	ccd 4	ccd 5	ccd 6	ccd 7	ccd 8	ccd 9
grade 0 events	10705	35536	16935	23836	61836	23365
	5%	10%	8%	7%	20%	11%
grade 1 events	93	1183	132	229	320	131
	0%	0%	0%	0%	0%	0%
grade 2 events	5956	46698	5452	37231	17060	6862
	2%	14%	2%	11%	5%	3%
grade 3 events	2219	8741	2466	16814	8092	2771
	1%	2%	1%	5%	2%	1%
grade 4 events	2045	8178	2344	16621	7543	2677
	0%	2%	1%	5%	2%	1%
grade 5 events	6515	25014	7781	23252	9940	7997
	3%	7%	3%	7%	3%	3%
grade 6 events	4015	77557	4670	86218	14489	5130
	1%	23%	2%	26%	4%	2%
grade 7 events	179105	123534	159569	116333	178888	156033
	85%	37%	80%	36%	59%	76%

2.2 Compared Parameters

Parameter	Planned	Actual	Parameter	Planned	Actual
Instrument	ACIS	ACIS	Obspar format version number	6	6
Detector	ACIS-456789	ACIS-456789	Obspar file type	PREDICTED	ACTUAL
Grating	NONE	NONE	Obspar update status	NONE	UPDATED
Data mode	FAINT	FAINT	Number of optional ACIS chips dropped	0	0
Observation mode	POINTING	POINTING	On-chip summing requested	N	N
Pointing RA	72.283504	72.25380404665255	Subarray requested	NONE	NONE
Pointing Dec	45.024230	45.00670368130264	Alternating exposures requested	N	N
Pointing Roll	189.233200	189.4108283899441	Primary exposure time	0.000000	3.2
SIM focus pos (mm)	-0.684267	-0.6828225247311905			
SIM defocus (mm)	0	0.001444936568705701			
SIM translation stage pos (mm)	-184.272523	-184.2691398207293			
SIM translation stage offset (mm)	-5.86	-5.863382762278519			
Observation start time	92710149.184000	92709038.175318			
Observation start date	2000-12-09T00:48:05	2000-12-09T00:30:38			
Observation end time	92741854.184000	92742168.226584			
Observation end date	2000-12-09T09:36:30	2000-12-09T09:42:48			
Read mode	TIMED	TIMED			

2.3 Aspect



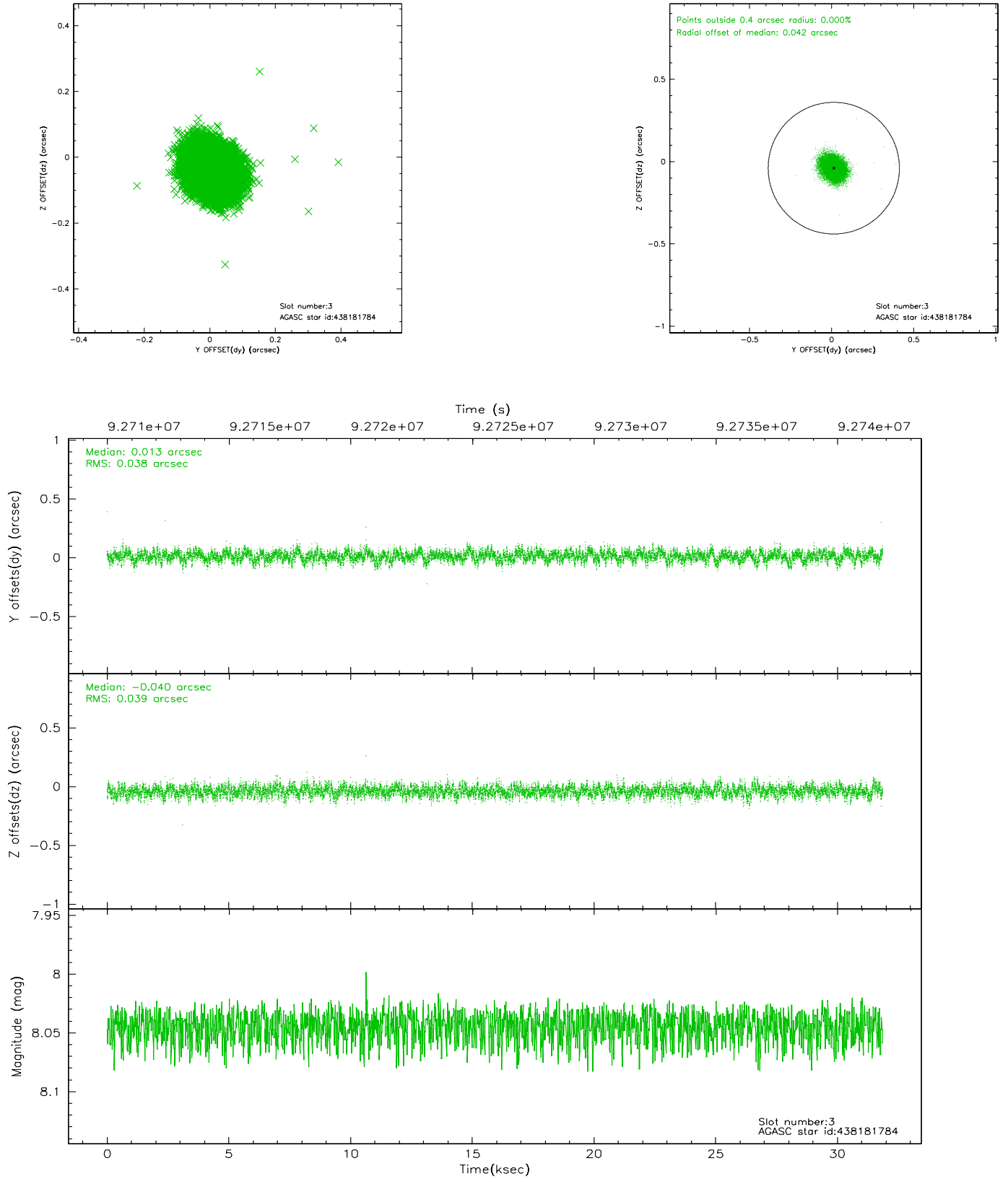


Slot Statistics

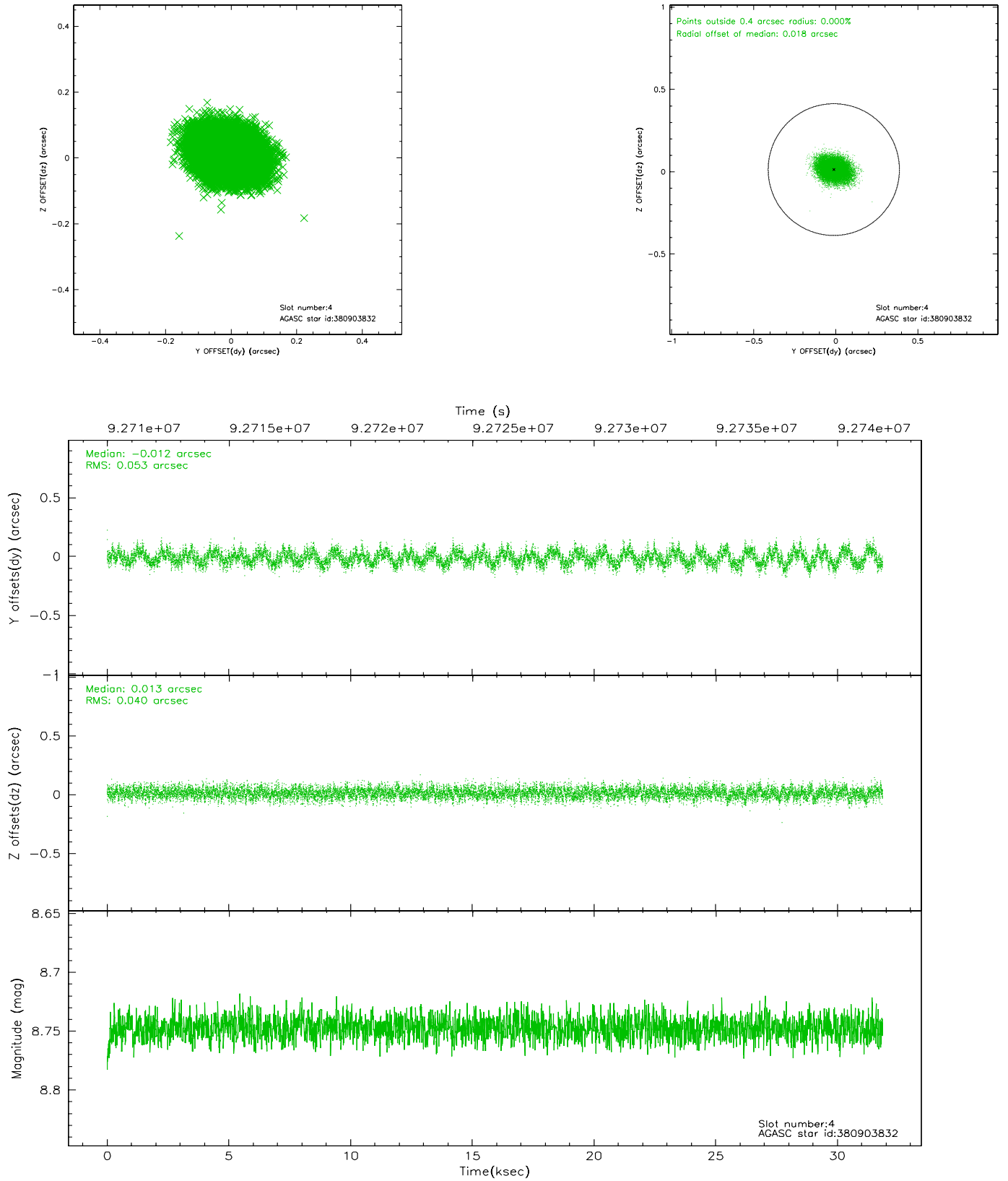
slot	status	id	mag	n_pts	med_dy	med_dz	dr1	dr2	ra	dec	mean_y	mean_z
0	FID	ACIS-S-2	7.09	7773	-0.033	-0.023	0.009	0.016	0.000000	0.000000	-754.92	-1847.28
1	FID	ACIS-S-4	7.19	7772	-0.007	0.023	0.011	0.018	0.000000	0.000000	2158.34	61.19
2	FID	ACIS-S-6	7.40	7773	0.013	0.006	0.010	0.017	0.000000	0.000000	407.16	698.62
3	GUIDE	438181784	8.04	15537	0.013	-0.040	0.057	0.093	71.972233	45.489356	507.01	-1778.95
4	GUIDE	380903832	8.75	15540	-0.012	0.013	0.071	0.114	72.555284	44.802199	-556.96	900.34
5	GUIDE	438174168	9.07	15537	0.041	0.036	0.078	0.134	71.685812	45.177000	1408.37	-790.19
6	GUIDE	380897112	8.95	15542	0.006	-0.042	0.063	0.105	73.055571	44.974202	-1912.96	484.91
7	GUIDE	438176744	9.49	15535	-0.049	0.034	0.097	0.158	72.786347	45.702571	-1640.03	-2210.28

2.4 Star Slots

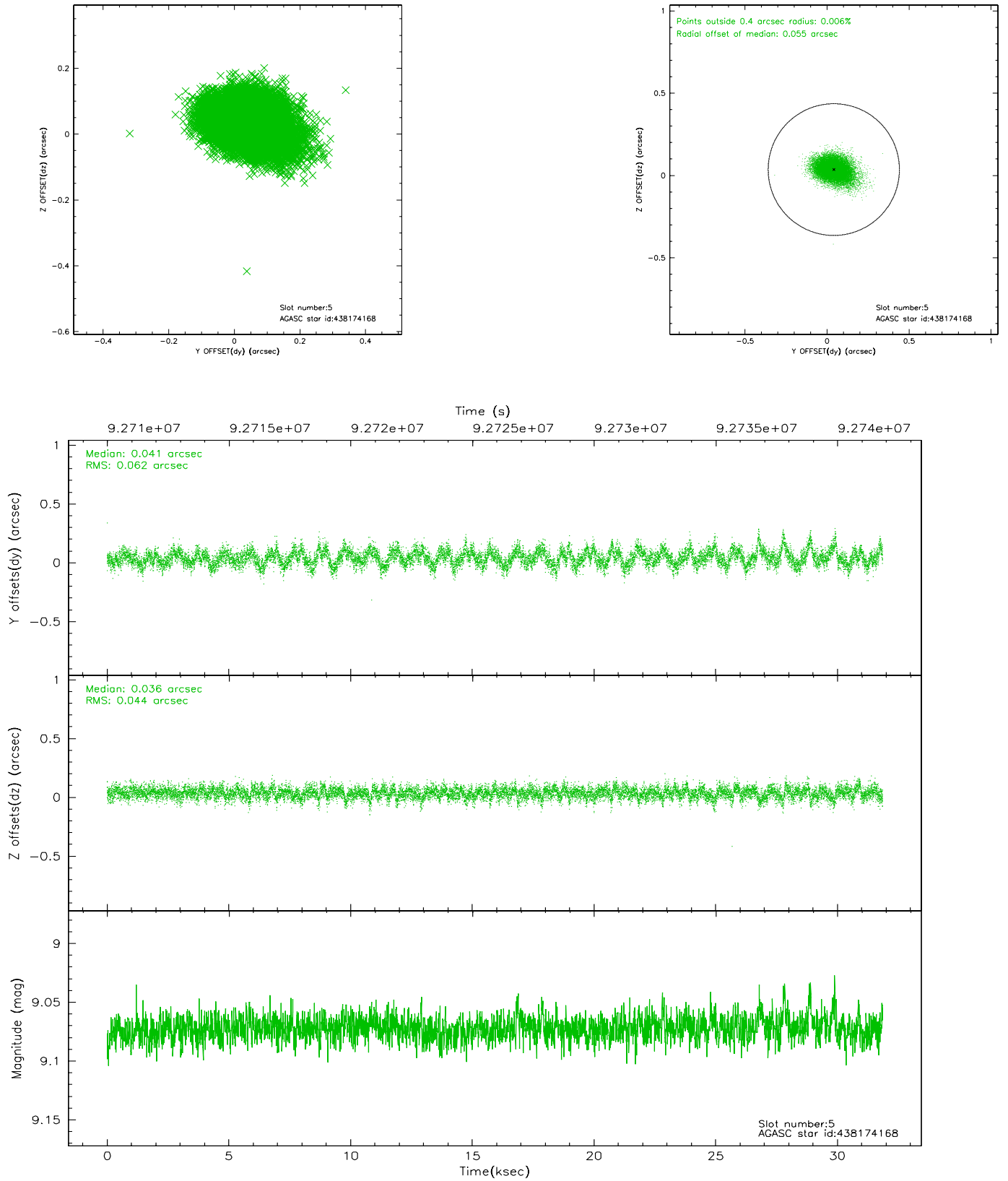
2.4.1 Slot 3



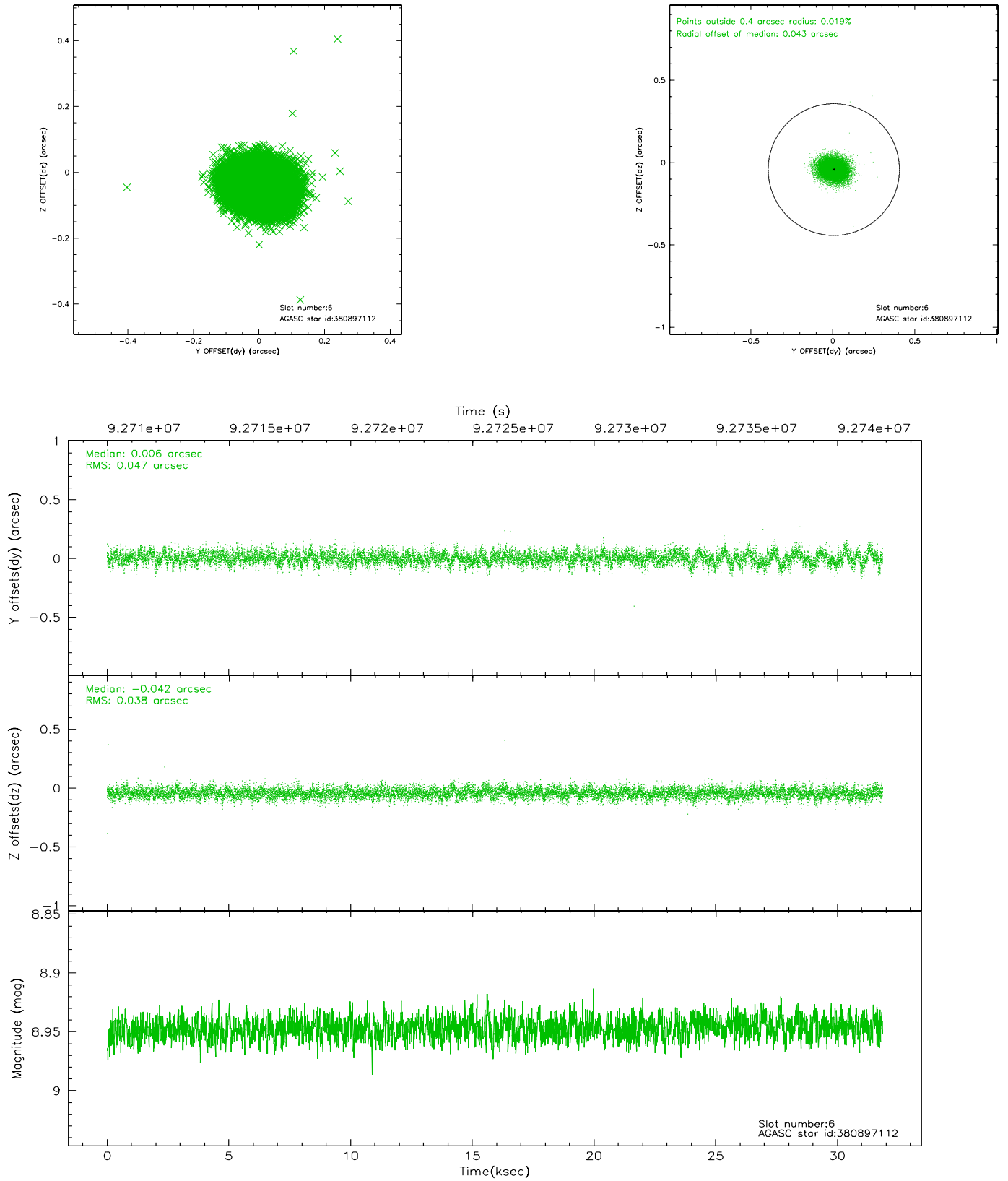
2.4.2 Slot 4



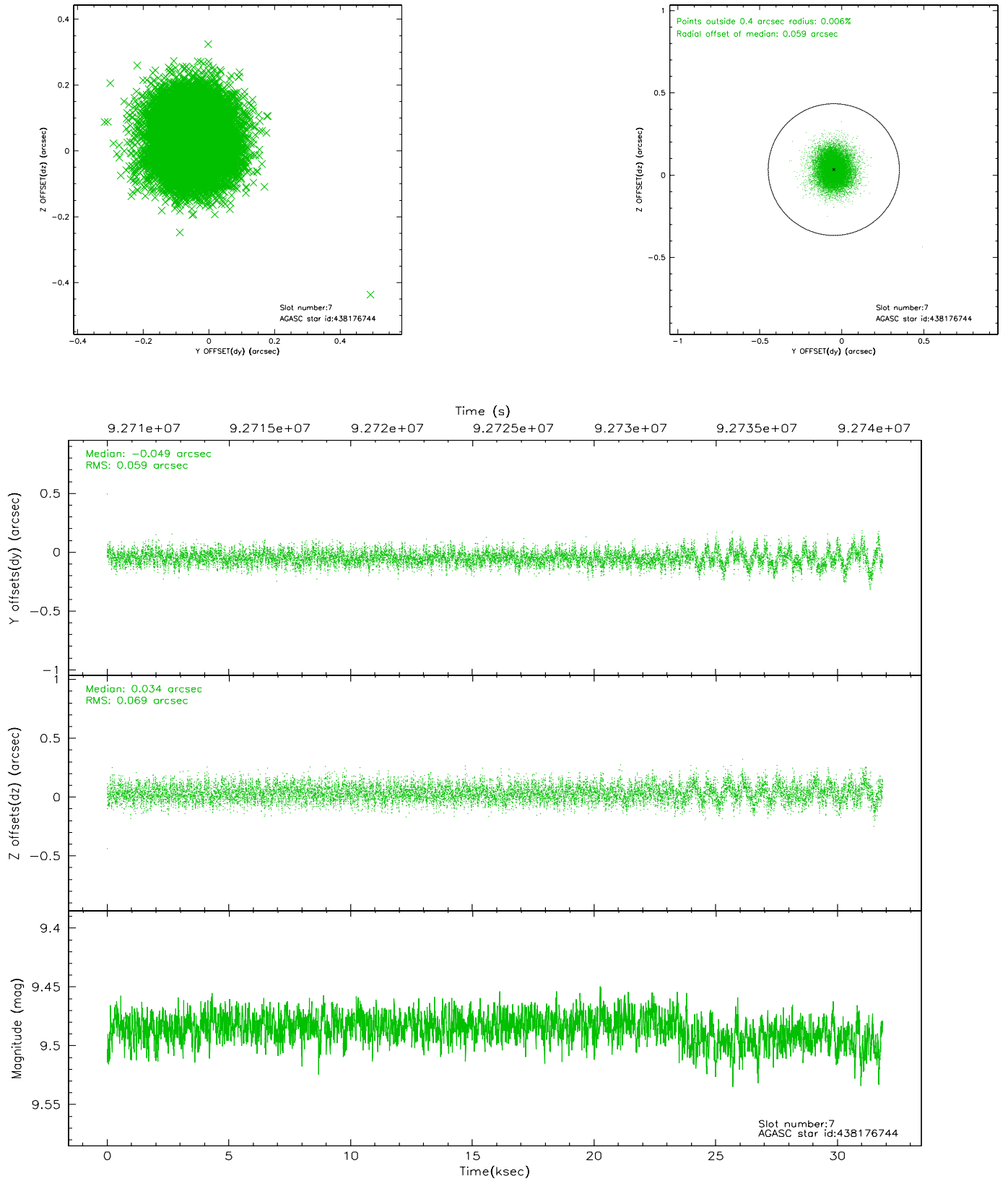
2.4.3 Slot 5



2.4.4 Slot 6

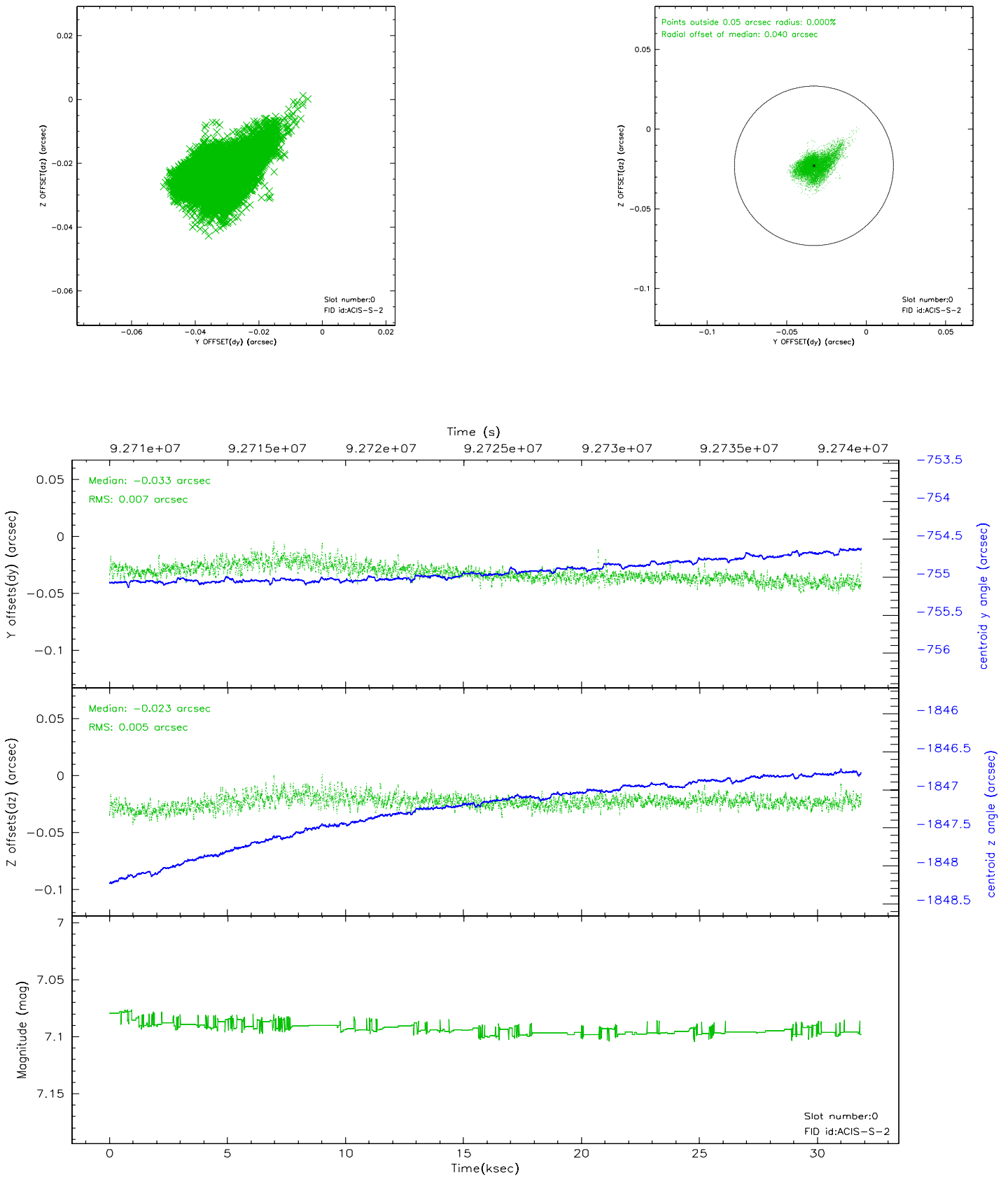


2.4.5 Slot 7

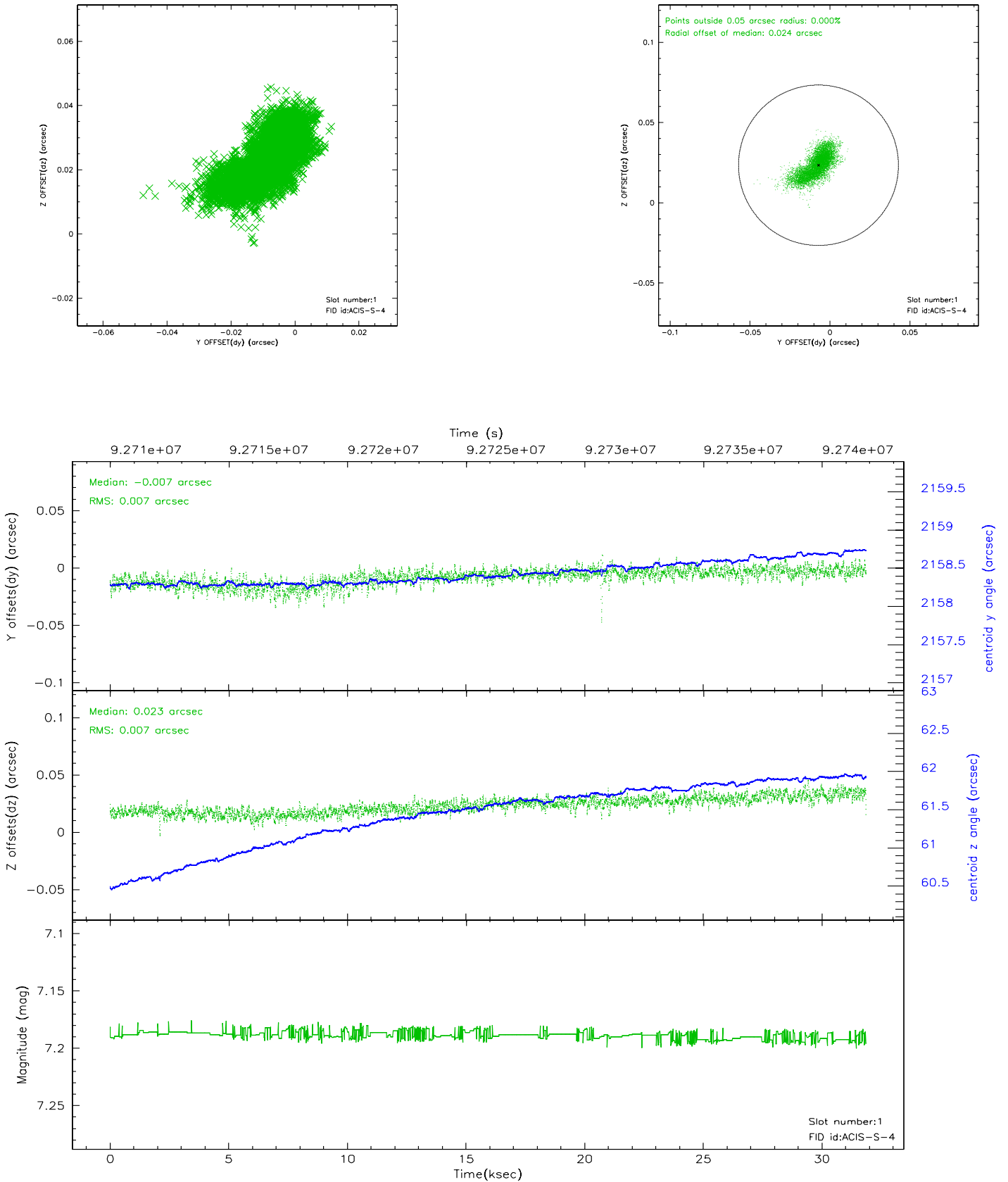


2.5 FID Slots

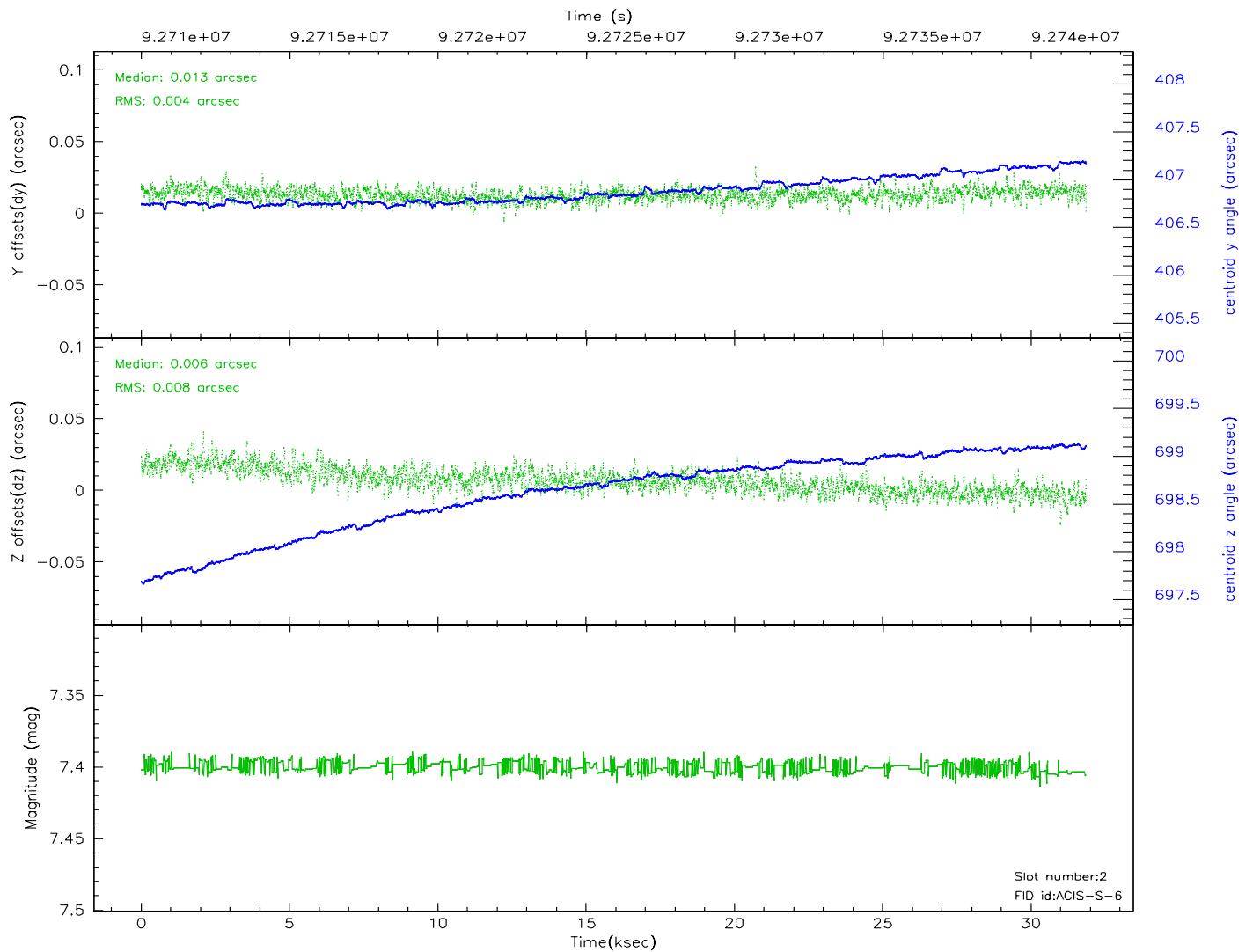
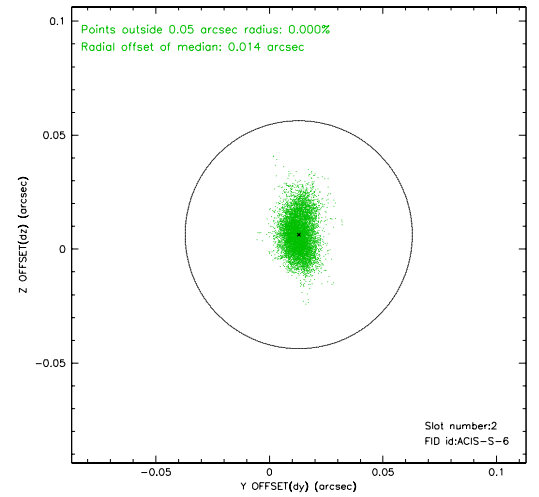
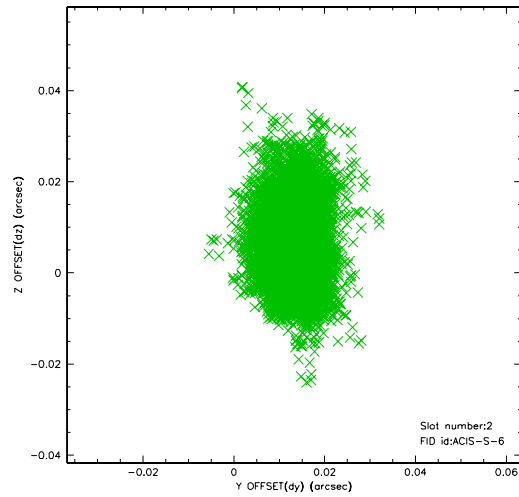
2.5.1 Slot 0



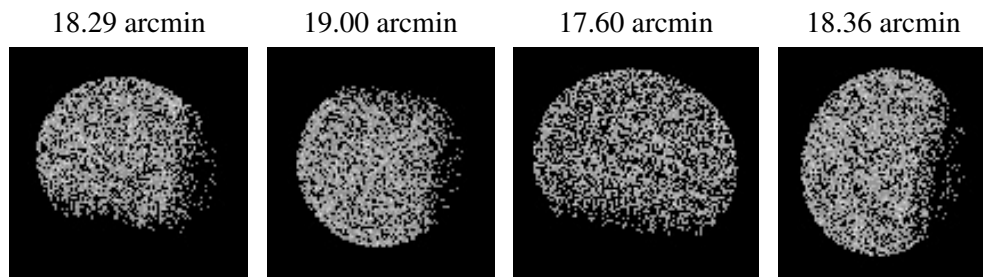
2.5.2 Slot 1



2.5.3 Slot 2



3 Point Sources



A Summary

A.1 Status

V&V Scientist	Beth Sundheim
V&V Date (YYYY-MM-DD)	2007.06.20
V&V Edition	1
V&V Disposition and Status	OK
V&V Charge Time	31.865

A.2 Comments