

V&V Reference Report

L2 ASCDS Version : 7.6.9

Observation 2206 - L2 Version 001
Chandra X-Ray Center

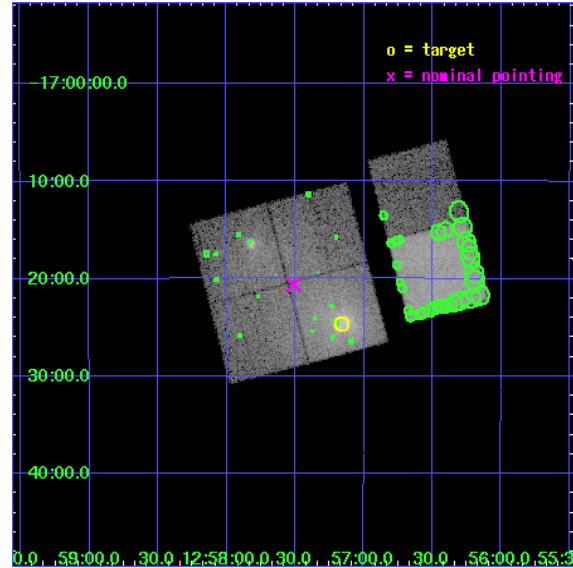
L2 Processing Date : Nov 2 2006

Contents

1	Front	2
2	OBI	3
2.1	OBI	3
2.1.1	Images	3
2.1.2	Bias	3
2.1.3	Parameters	4
2.1.4	Events	4
2.2	Compared Parameters	5
2.3	Aspect	6
2.4	Star Slots	9
2.4.1	Slot 3	9
2.4.2	Slot 4	10
2.4.3	Slot 5	11
2.4.4	Slot 6	12
2.4.5	Slot 7	13
2.5	FID Slots	14
2.5.1	Slot 0	14
2.5.2	Slot 1	15
2.5.3	Slot 2	16
3	Point Sources	17
A	Summary	18
A.1	Status	18
A.2	Comments	18

1 Front

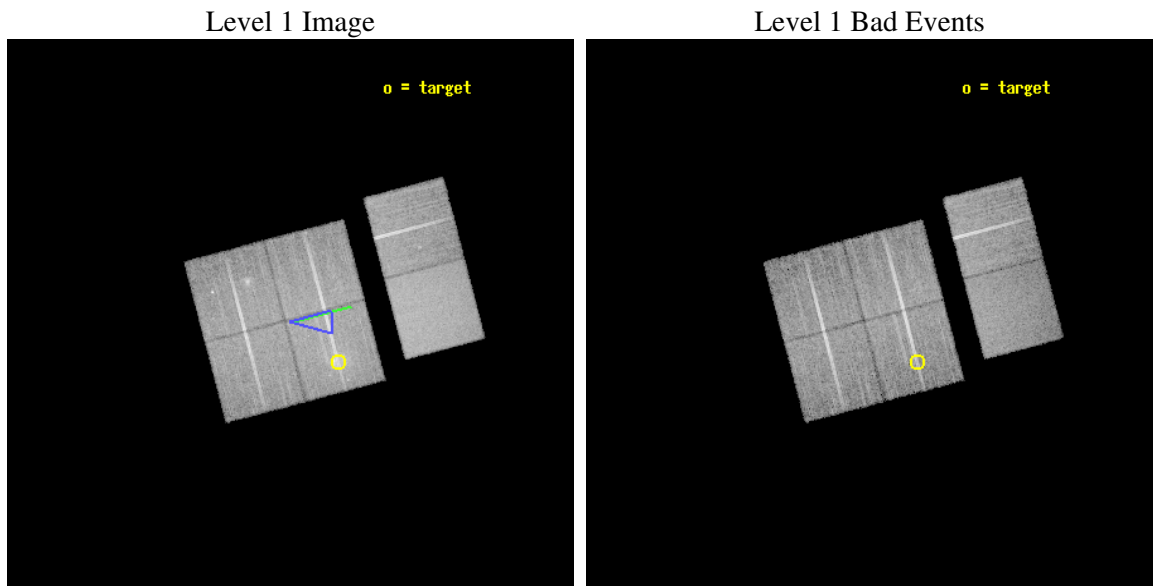
seq_num	800145
obs_id	2206
title	INTRACLUSTER MEDIUM DEPLETION AND COOLING FLOW SURVIVAL DURING A CLUSTER MERGER IN ABELL 1644
observer	DR. JOSEPH MOHR
object	ABELL 1644
dtcycle	0
cycle	P
ra_targ	194.29
dec_targ	-17.41
ra_nom	194.37747178354
dec_nom	-17.343356579076
roll_nom	75.23484991242
revision	2
ontime	18953.600017652
livetime	18713.598121741
ontime0	18953.600017652
ontime1	18953.600017652
ontime2	18953.600017652
ontime3	18953.600017652
ontime6	18953.600017652
ontime7	18953.600017652
l2events	192001



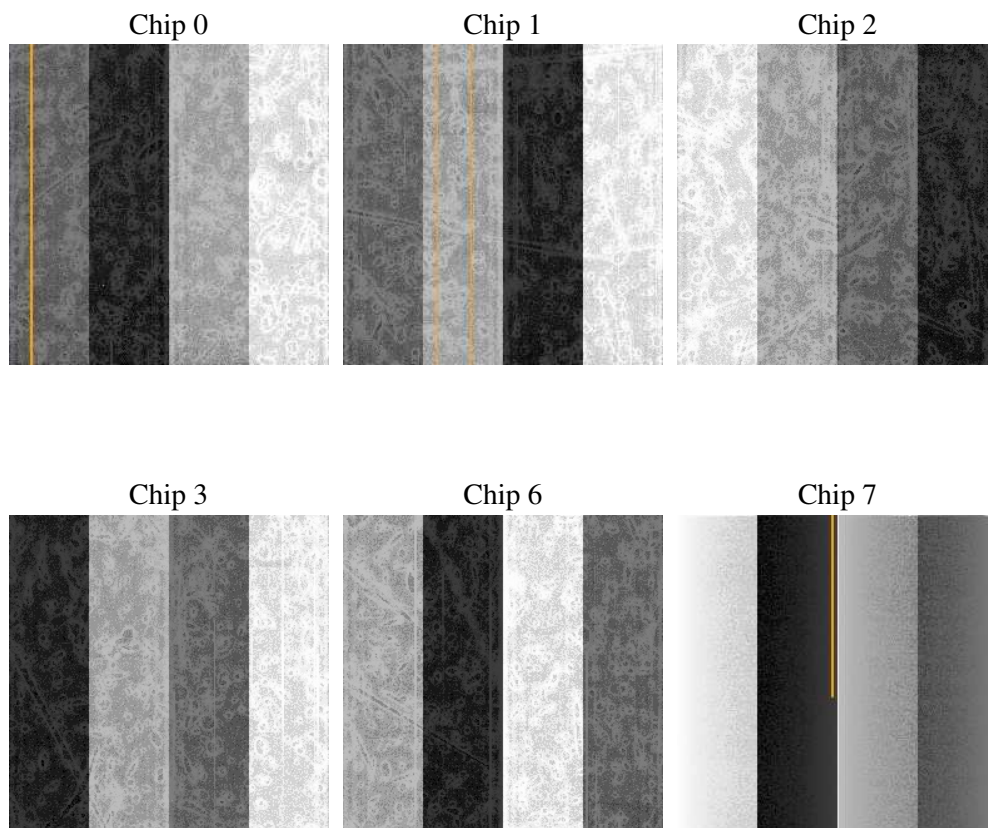
2 OBI

2.1 OBI

2.1.1 Images



2.1.2 Bias



2.1.3 Parameters

obi_num	0
ascdsver	7.6.9
caldsver	3.2.3
date	2006-11-02T15:00:38
revision	2

sched_exp_time	19000.000000
ontime	18959.84229739
ontime0	18959.84229739
ontime1	18959.84229739
ontime2	18959.84229739
ontime3	18959.84229739
ontime6	18959.84229739
ontime7	18959.84229739
l1events	779390

2.1.4 Events

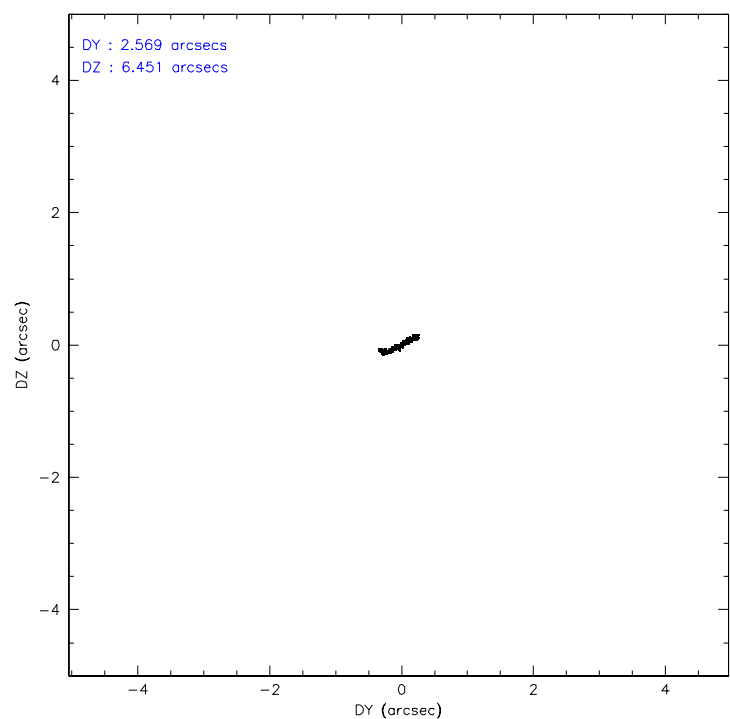
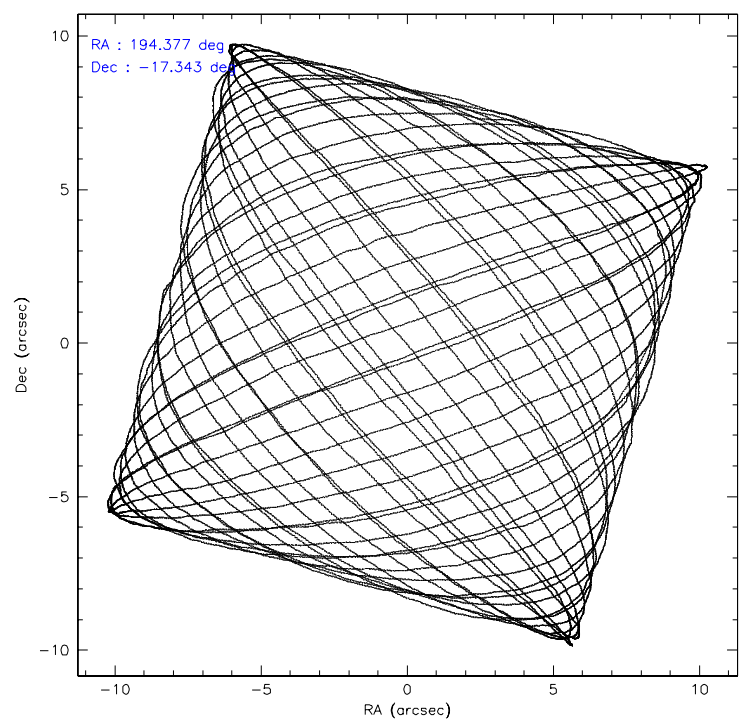
	ccd 0	ccd 1	ccd 2	ccd 3	ccd 6	ccd 7
level 1 events	114620	116197	124119	145632	119963	158859
rejected events	89325	91620	101990	95895	105370	88756
rejected %	77%	78%	82%	65%	87%	55%

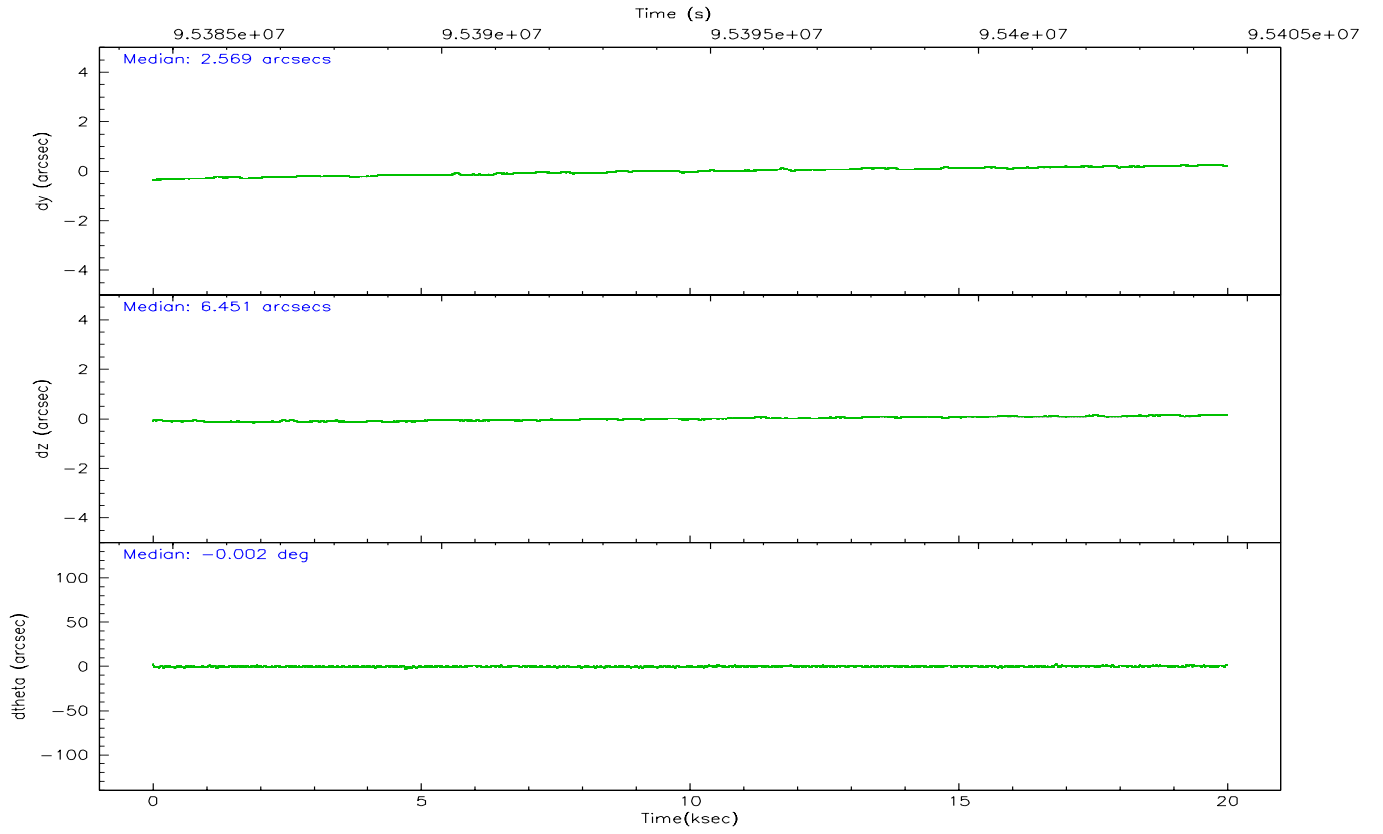
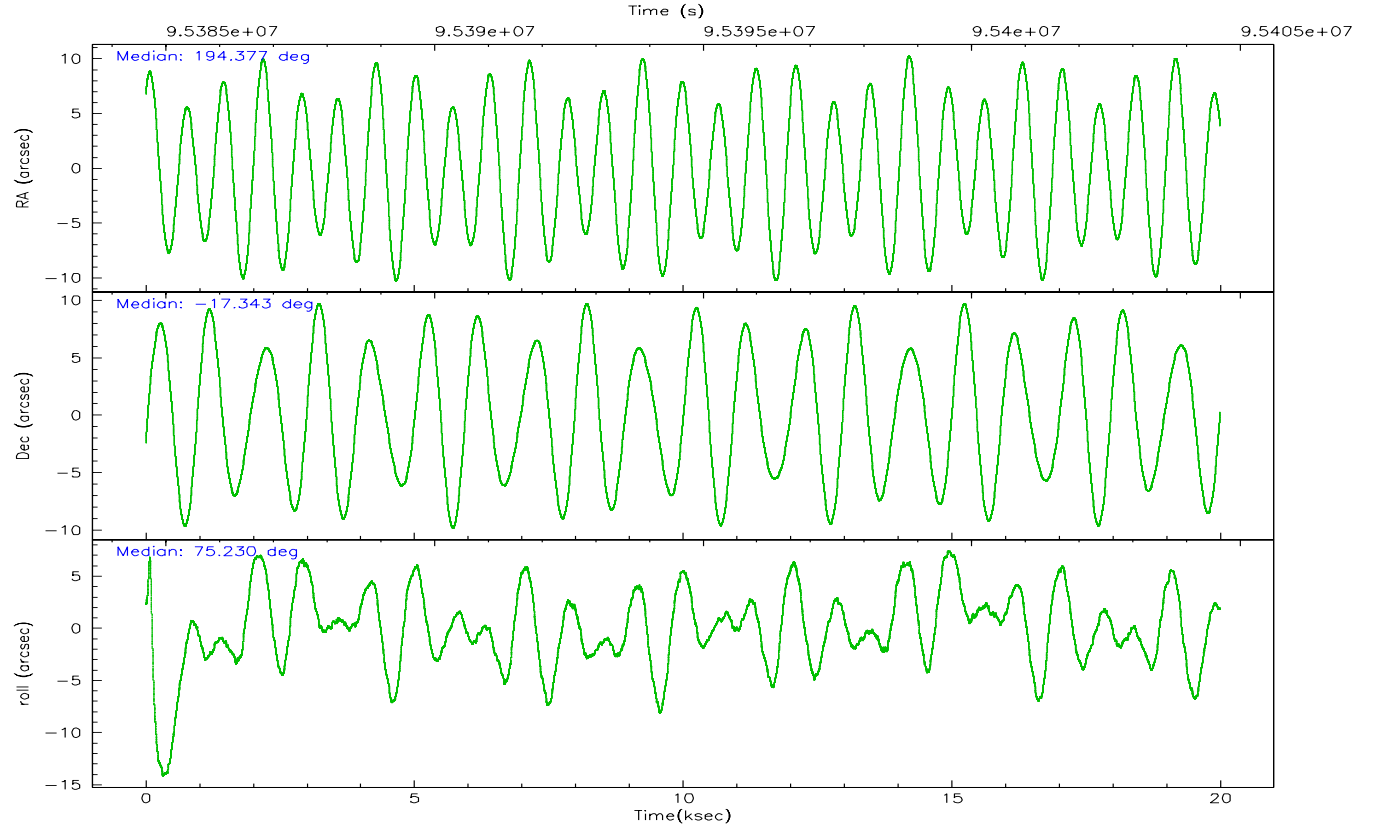
	ccd 0	ccd 1	ccd 2	ccd 3	ccd 6	ccd 7
grade 0 events	15676	14617	13227	36064	6672	6349
	13%	12%	10%	24%	5%	3%
grade 1 events	104	64	74	178	59	93
	0%	0%	0%	0%	0%	0%
grade 2 events	3891	3775	3555	6066	2739	16866
	3%	3%	2%	4%	2%	10%
grade 3 events	1665	1727	1502	2240	1350	4180
	1%	1%	1%	1%	1%	2%
grade 4 events	1519	1655	1463	2323	1302	4027
	1%	1%	1%	1%	1%	2%
grade 5 events	4014	4212	3802	4272	4812	9760
	3%	3%	3%	2%	4%	6%
grade 6 events	2553	2811	2387	3052	2532	38699
	2%	2%	1%	2%	2%	24%
grade 7 events	85198	87336	98109	91437	100497	78885
	74%	75%	79%	62%	83%	49%

2.2 Compared Parameters

Parameter	Planned	Actual	Parameter	Planned	Actual
Instrument	ACIS	ACIS	Obspar format version number	6	6
Detector	ACIS-012367	ACIS-012367	Obspar file type	PREDICTED	ACTUAL
Grating	NONE	NONE	Obspar update status	NONE	UPDATED
Data mode	FAINT	FAINT	Number of optional ACIS chips dropped	0	0
Observation mode	POINTING	POINTING	On-chip summing requested	N	N
Pointing RA	194.384959	194.3774717835389	Subarray requested	NONE	NONE
Pointing Dec	-17.369893	-17.34335657907612	Alternating exposures requested	N	N
Pointing Roll	75.028406	75.23484991242043	Primary exposure time	0.000000	3.2
Roll angle	90.000000	90.000000			
Roll tolerance	15.000000	15.000000			
Roll constraint allows 180D rotation	N	N			
SIM focus pos (mm)	-0.782348	-0.7809083437167272			
SIM defocus (mm)	0	0.001439871863259334			
SIM translation stage pos (mm)	-233.592463	-233.5874344608287			
SIM translation stage offset (mm)	0	-0.005018542100998502			
Observation start time	95385624.184000	95384265.72771899			
Observation start date	2001-01-08T23:59:20	2001-01-08T23:37:45			
Observation end time	95404624.184000	95405201.353522			
Observation end date	2001-01-09T05:16:00	2001-01-09T05:26:41			
Read mode	TIMED	TIMED			

2.3 Aspect



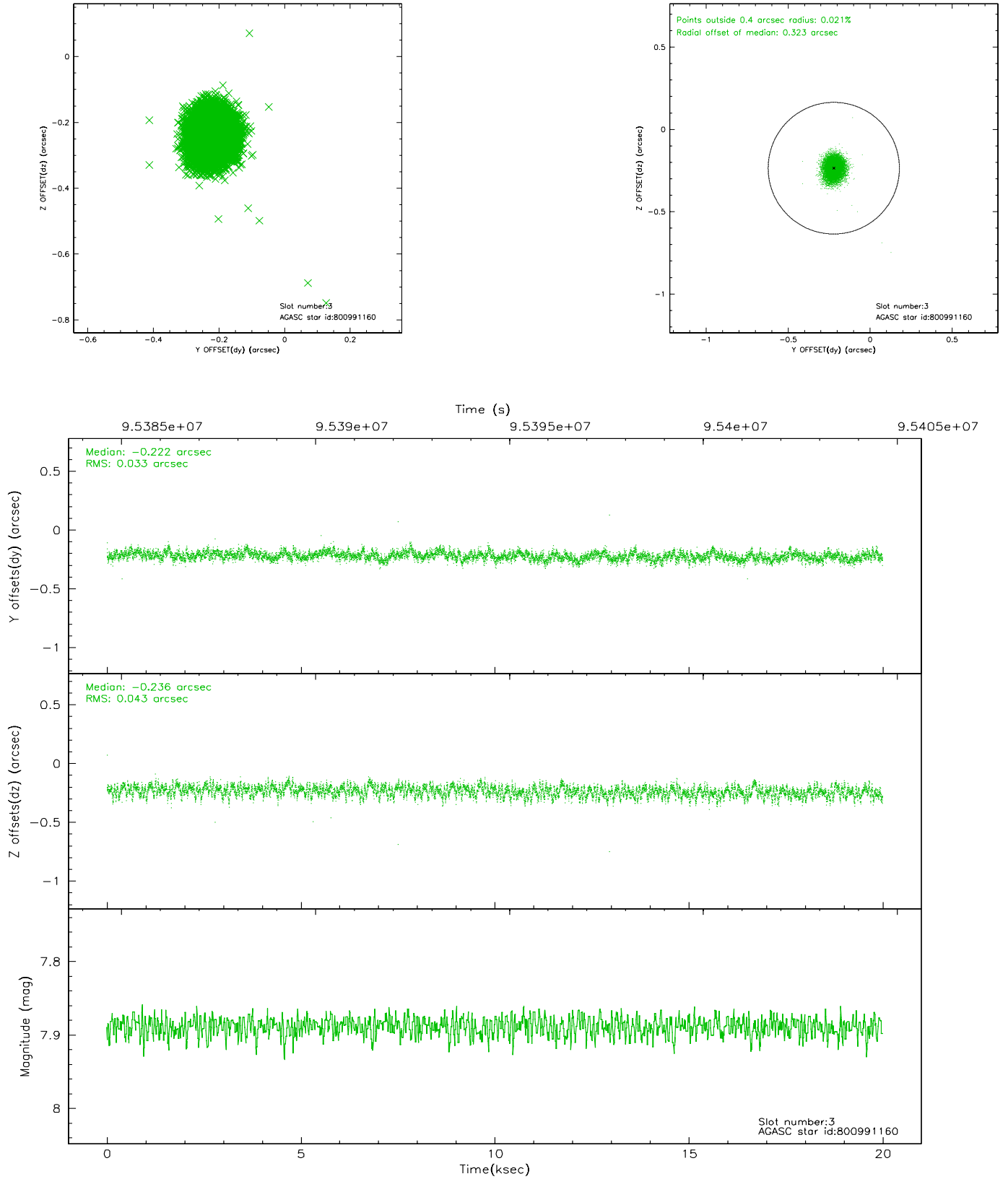


Slot Statistics

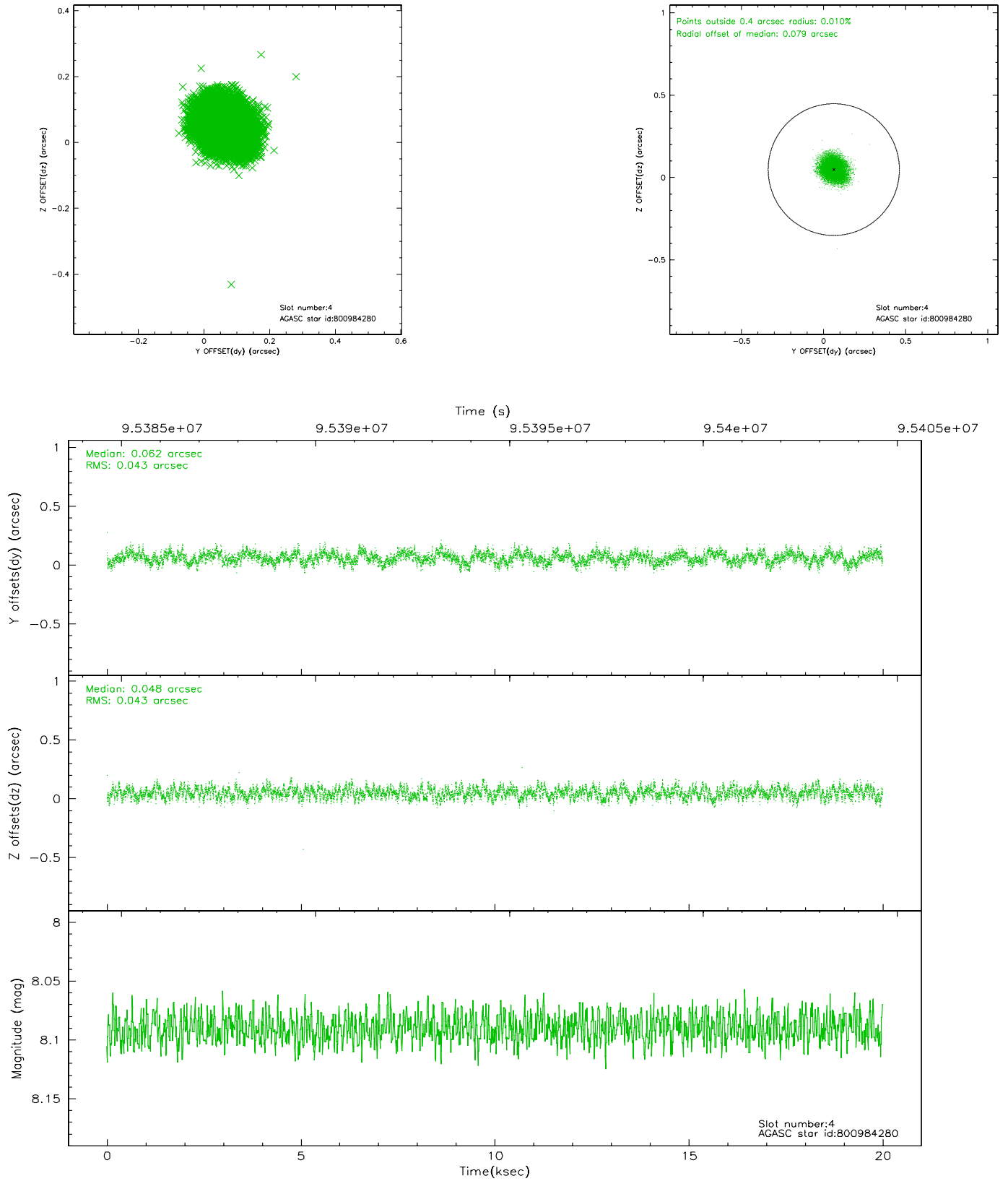
slot	status	id	mag	n_pts	med_dy	med_dz	dr1	dr2	ra	dec	mean_y	mean_z
0	FID	ACIS-I-2	7.16	4875	-0.028	-0.037	0.012	0.019	0.000000	0.000000	-756.95	-836.23
1	FID	ACIS-I-4	7.18	4876	-0.053	0.035	0.013	0.020	0.000000	0.000000	2157.00	1069.92
2	FID	ACIS-I-5	7.23	4876	-0.020	0.071	0.011	0.017	0.000000	0.000000	-1810.52	1068.02
3	GUIDE	800991160	7.89	9751	-0.222	-0.236	0.057	0.092	194.030445	-16.892494	1343.41	1623.19
4	GUIDE	800984280	8.09	9751	0.062	0.048	0.065	0.101	194.396865	-17.394812	-75.94	-62.47
5	GUIDE	801376832	9.45	9749	0.128	0.084	0.084	0.136	194.503099	-17.681116	-977.59	-681.11
6	GUIDE	801374512	9.77	9744	0.093	-0.039	0.108	0.174	194.049661	-17.677987	-1369.63	823.86
7	GUIDE	801120136	9.68	9742	-0.064	0.144	0.099	0.167	194.777860	-17.348491	421.84	-1284.62

2.4 Star Slots

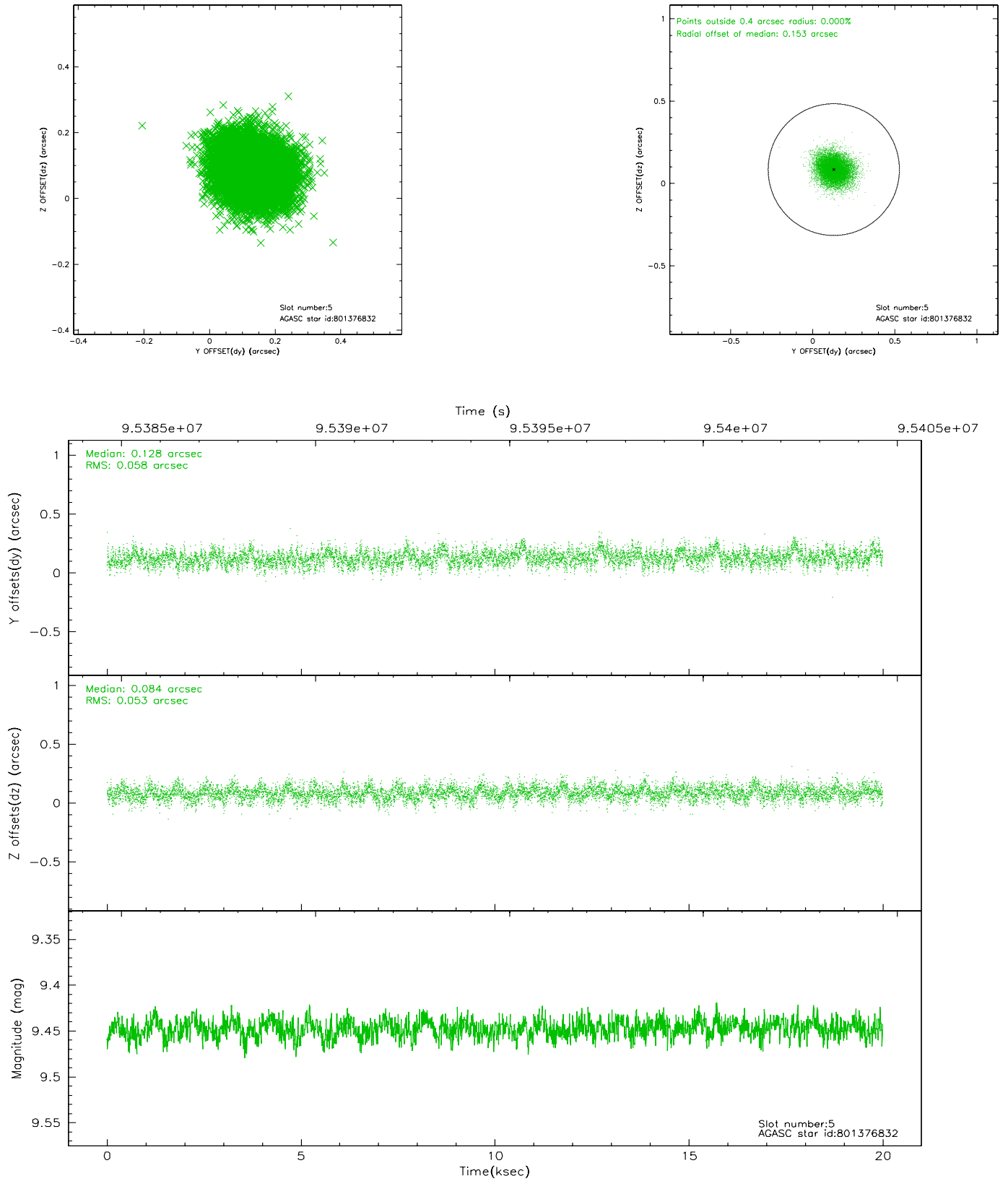
2.4.1 Slot 3



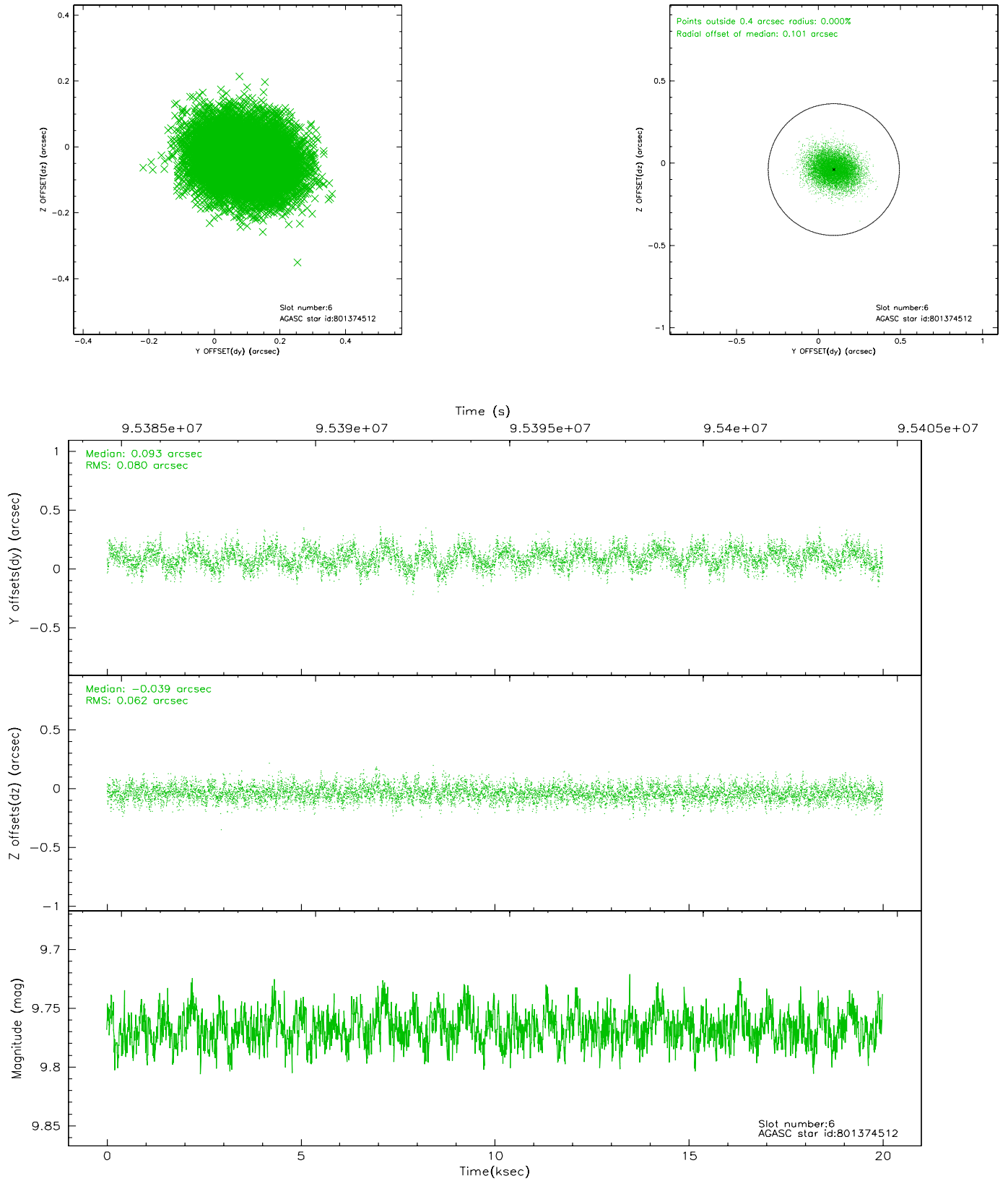
2.4.2 Slot 4



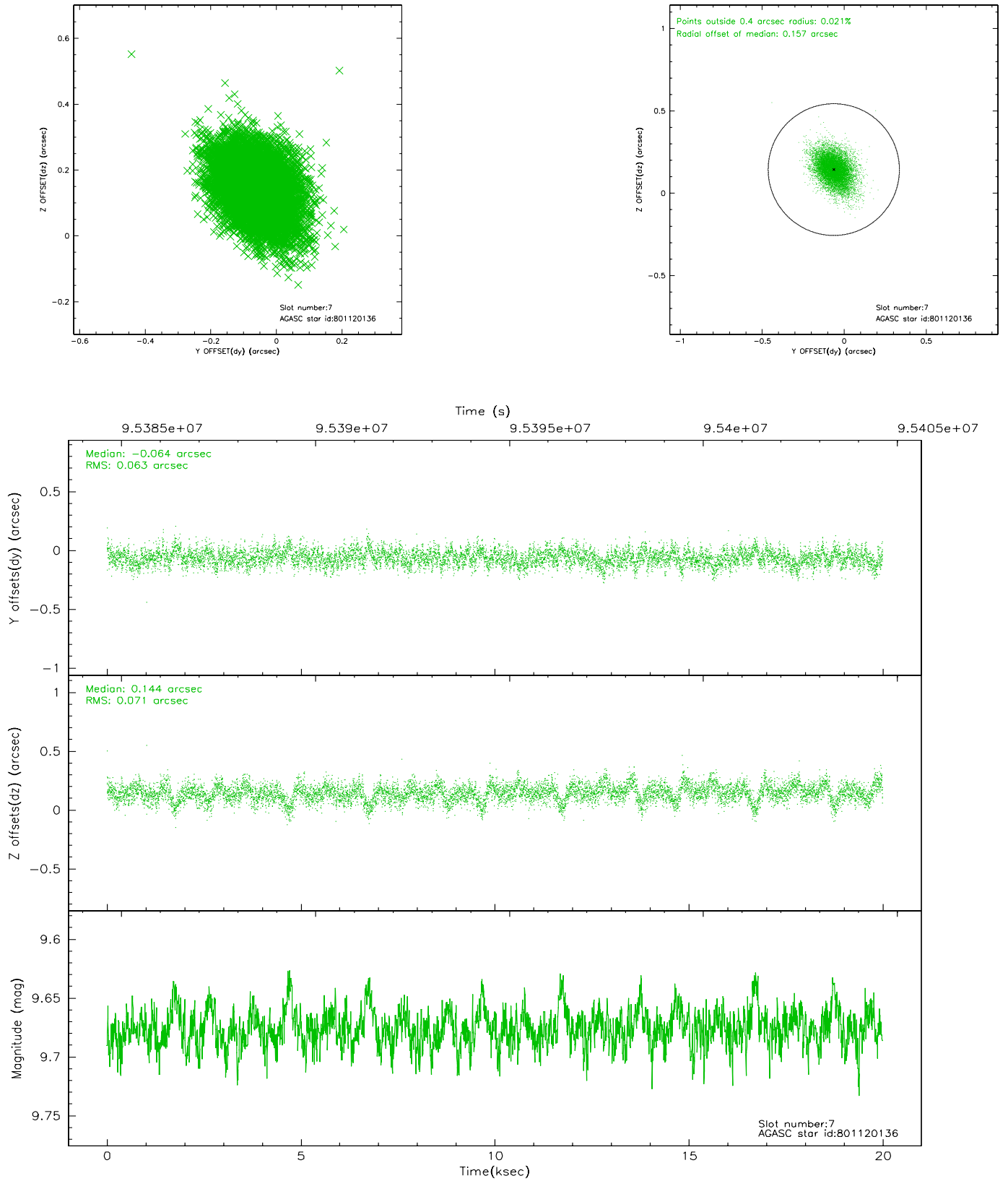
2.4.3 Slot 5



2.4.4 Slot 6

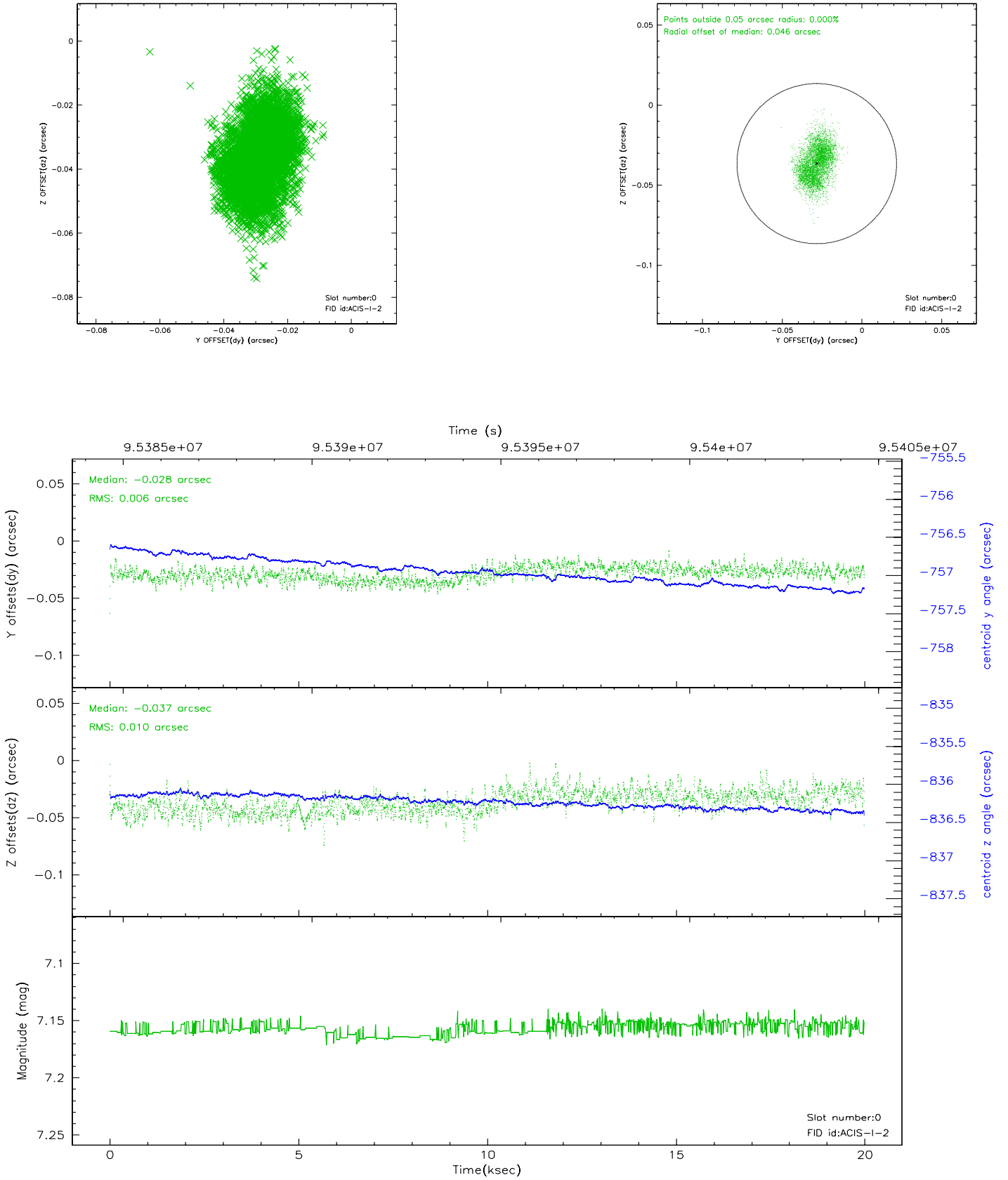


2.4.5 Slot 7

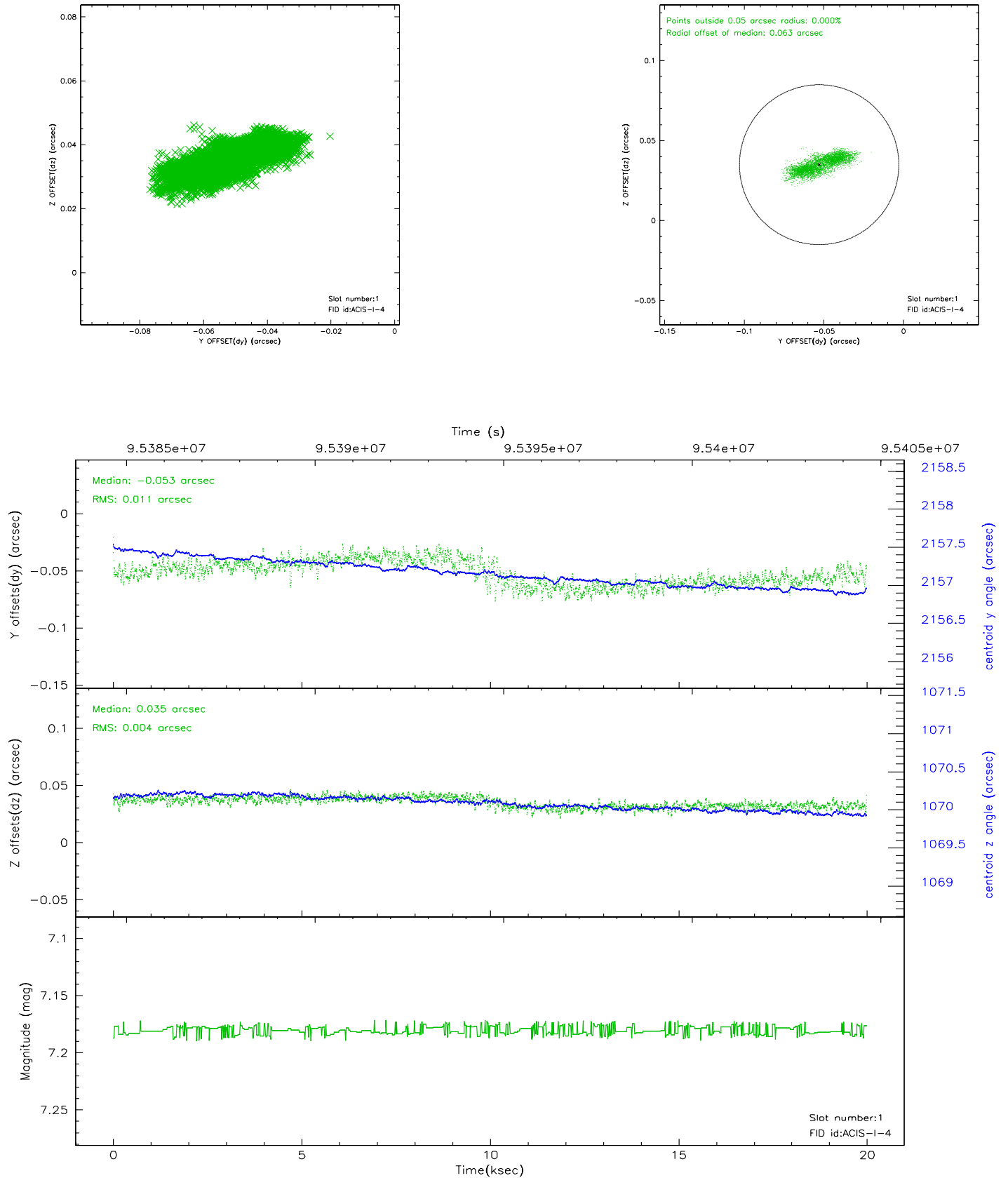


2.5 FID Slots

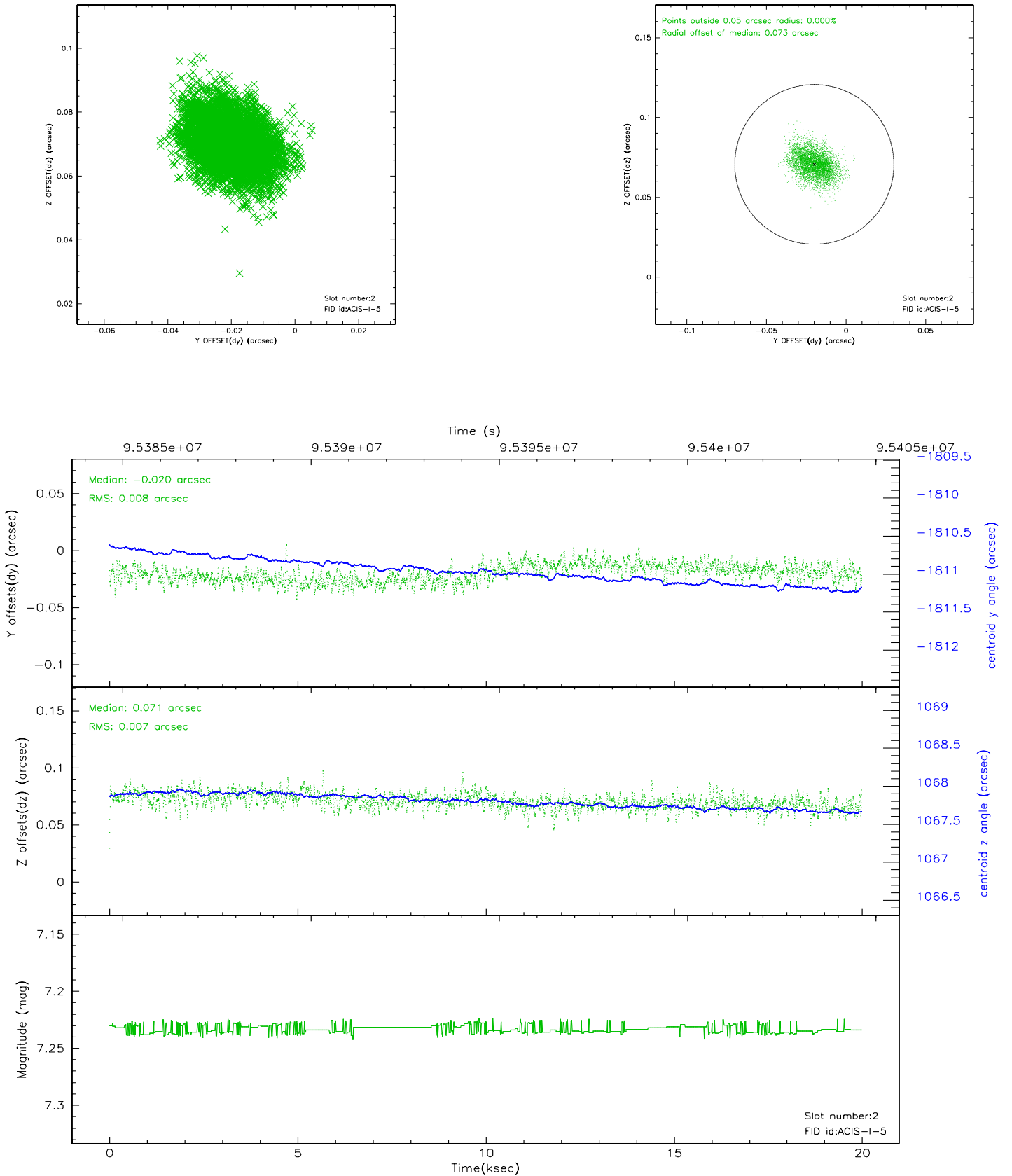
2.5.1 Slot 0



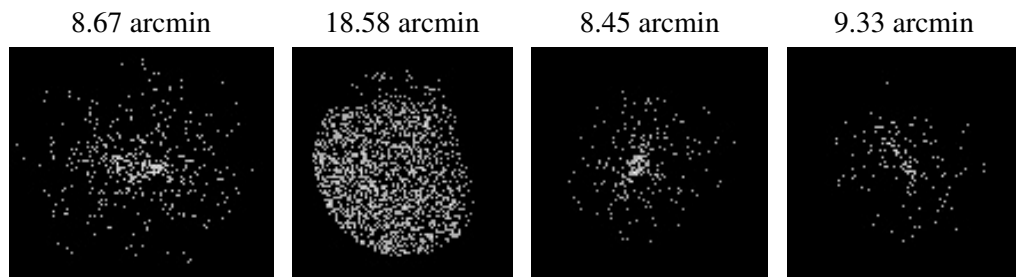
2.5.2 Slot 1



2.5.3 Slot 2



3 Point Sources



A Summary

A.1 Status

V&V Scientist	Jen Lauer
V&V Date (YYYY-MM-DD)	2006.11.02
V&V Edition	1
V&V Disposition and Status	OK
V&V Charge Time	18.956

A.2 Comments

Roll constraint met.