

V&V Reference Report

L2 ASCDS Version : 7.6.9

Observation 2204 - L2 Version 001
Chandra X-Ray Center

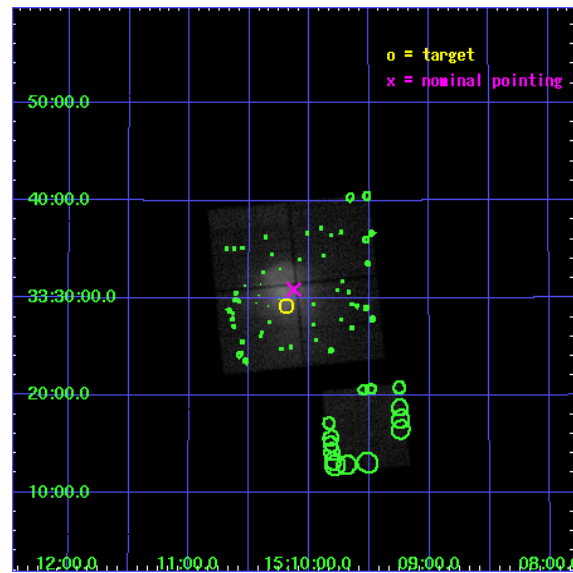
L2 Processing Date : Nov 29 2006

Contents

1	Front	2
2	OBI	3
2.1	OBI	3
2.1.1	Images	3
2.1.2	Bias	3
2.1.3	Parameters	4
2.1.4	Events	4
2.2	Compared Parameters	5
2.3	Aspect	6
2.4	Star Slots	9
2.4.1	Slot 3	9
2.4.2	Slot 4	10
2.4.3	Slot 5	11
2.4.4	Slot 6	12
2.4.5	Slot 7	13
2.5	FID Slots	14
2.5.1	Slot 0	14
2.5.2	Slot 1	15
2.5.3	Slot 2	16
3	Point Sources	17
A	Summary	18
A.1	Status	18
A.2	Comments	18

1 Front

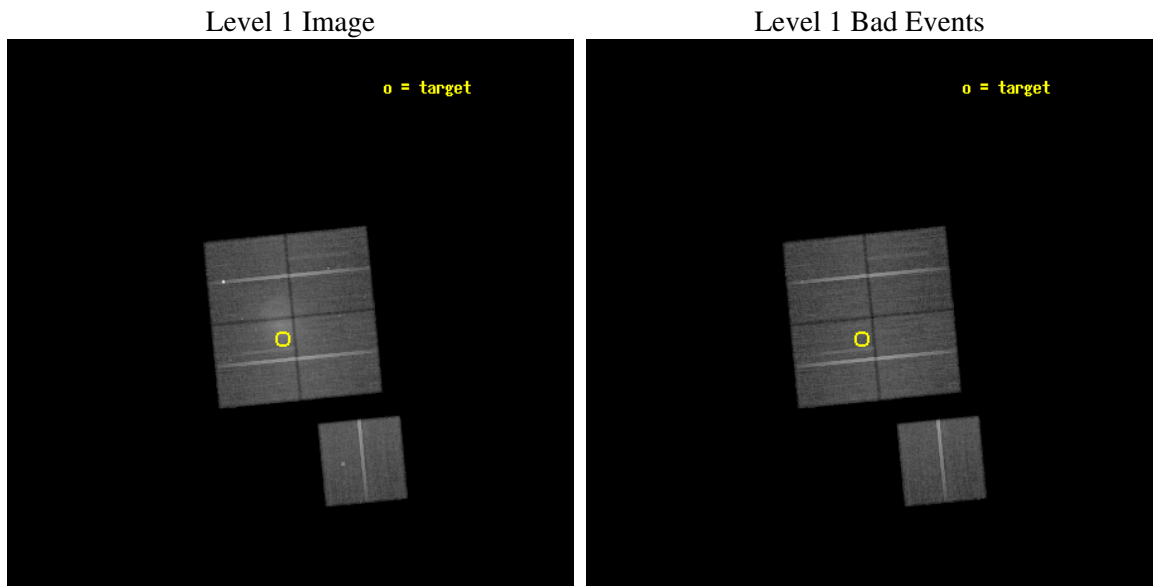
seq_num	800143
obs_id	2204
title	MERGER SHOCKS IN CLUSTERS OF GALAXIES
observer	Dr. Craig Sarazin
object	A2034
dtcycle	0
cycle	P
ra_targ	227.548775
dec_targ	33.486608
ra_nom	227.53186146796
dec_nom	33.515005085753
roll_nom	174.45589643915
revision	2
ontime	54662.176964268
livetime	53947.975380521
ontime0	54649.613033518
ontime1	54659.036043912
ontime2	54665.317934483
ontime3	54662.176964268
ontime6	54671.599894881
l2events	233562



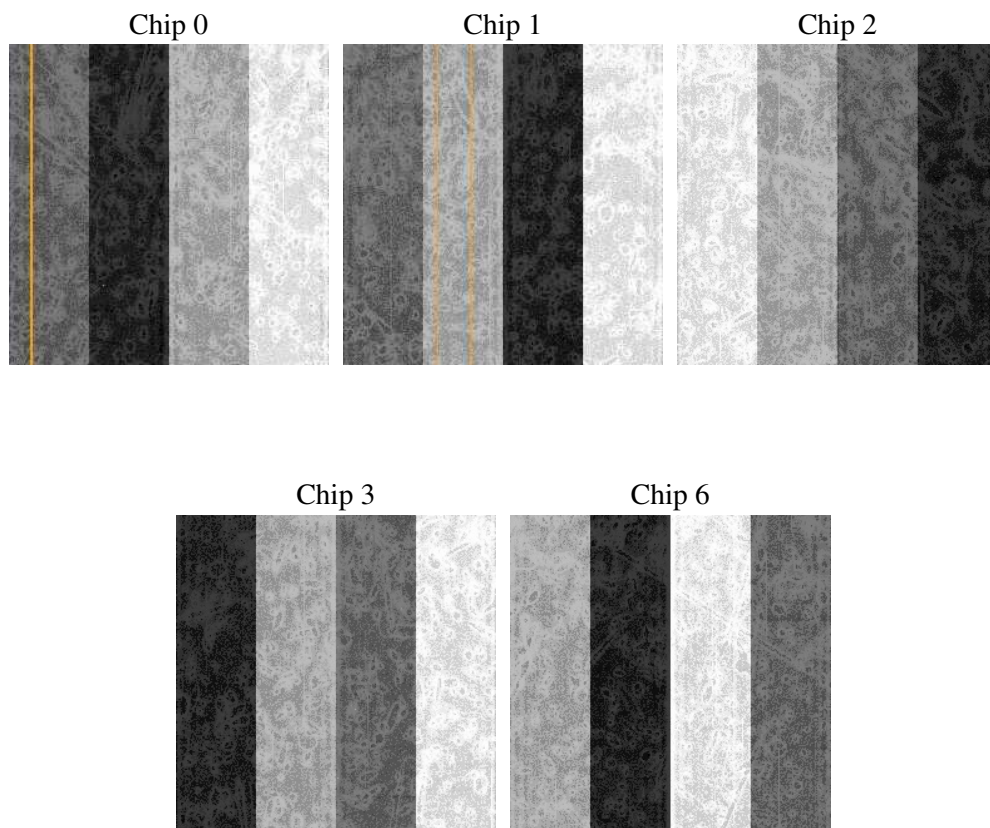
2 OBI

2.1 OBI

2.1.1 Images



2.1.2 Bias



2.1.3 Parameters

obi_num	1
ascdsver	7.6.9
caldbver	3.2.4
date	2006-11-29T19:35:17
revision	2

sched_exp_time	54897.737000
ontime	54666.005782023
ontime0	54653.441851273
ontime1	54662.864861667
ontime2	54669.146752238
ontime3	54666.005782023
ontime6	54675.428712636
l1events	1598637

2.1.4 Events

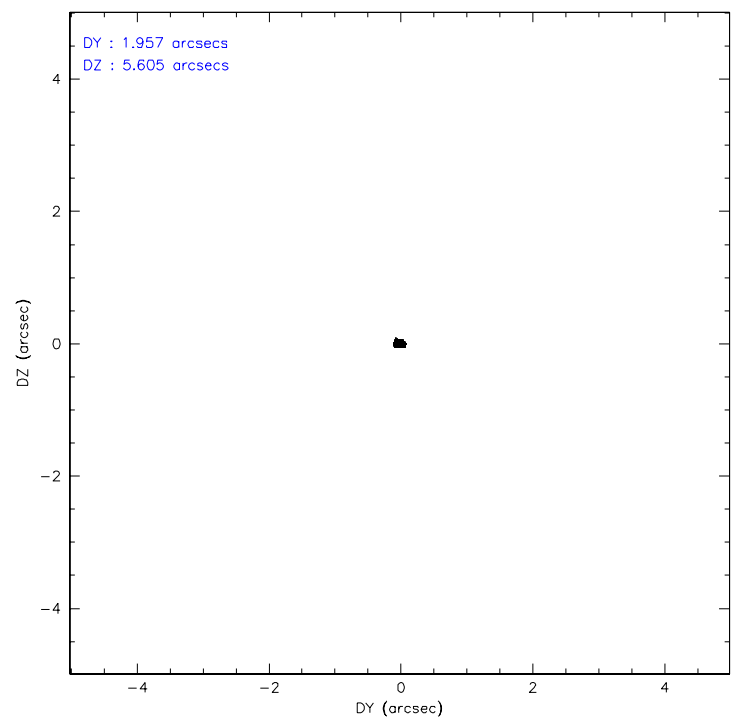
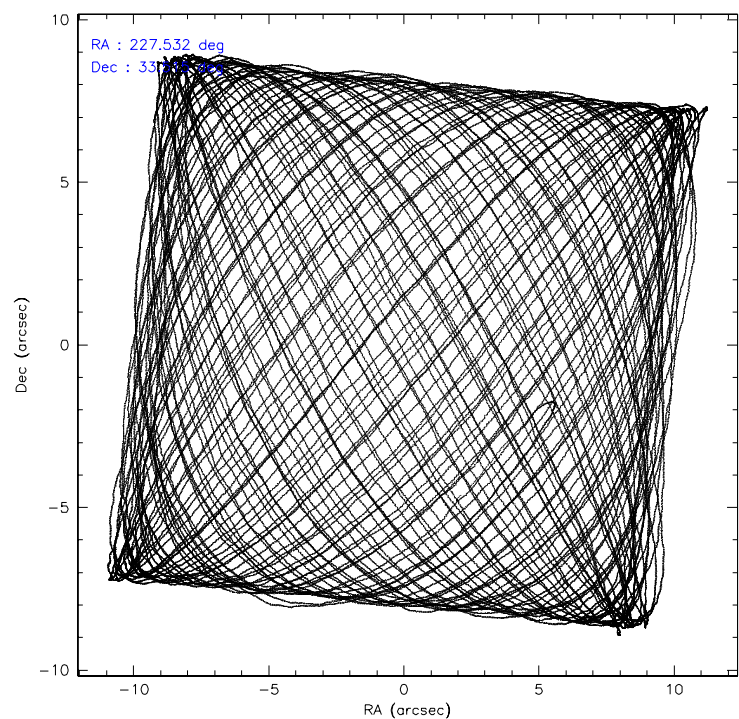
	ccd 0	ccd 1	ccd 2	ccd 3	ccd 6
level 1 events	283105	319193	335897	360985	299457
rejected events	246861	247567	288633	280099	269007
rejected %	87%	77%	85%	77%	89%

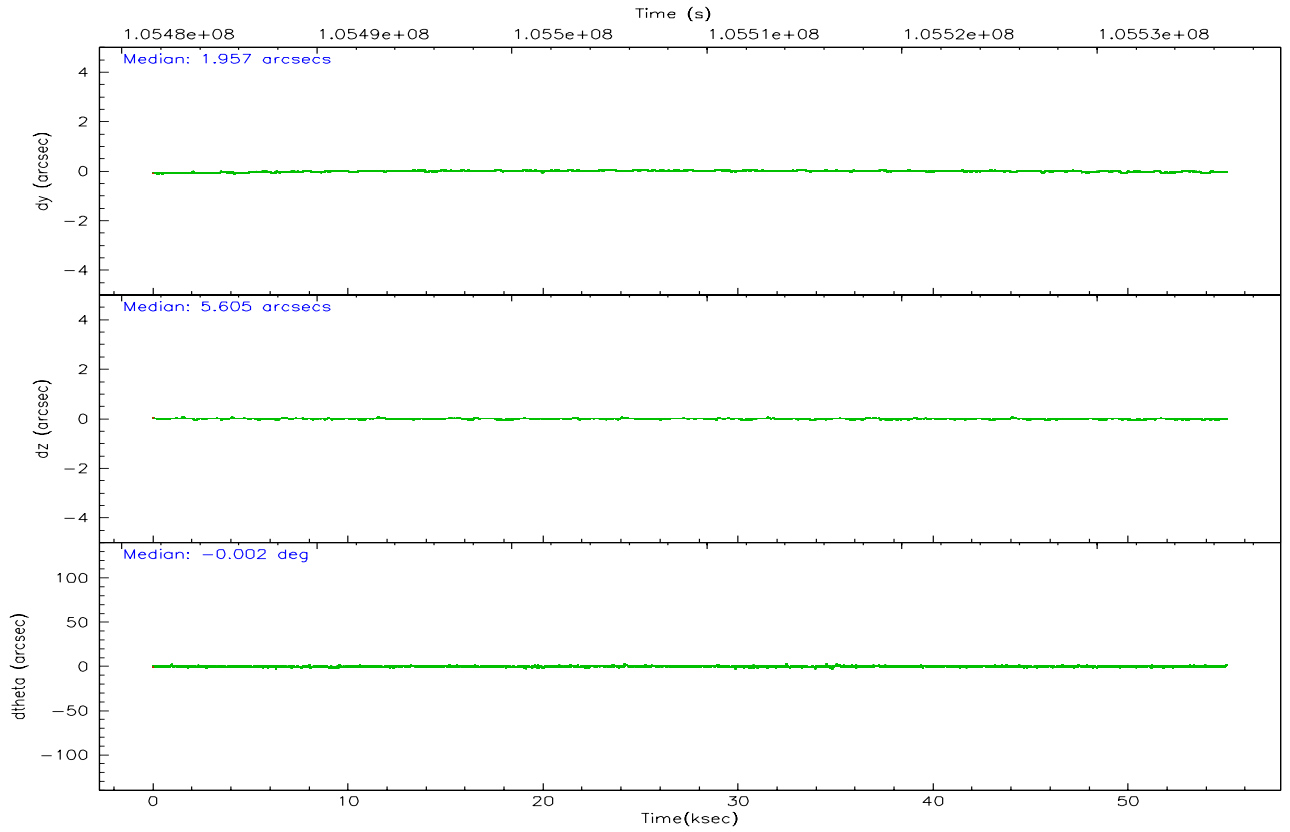
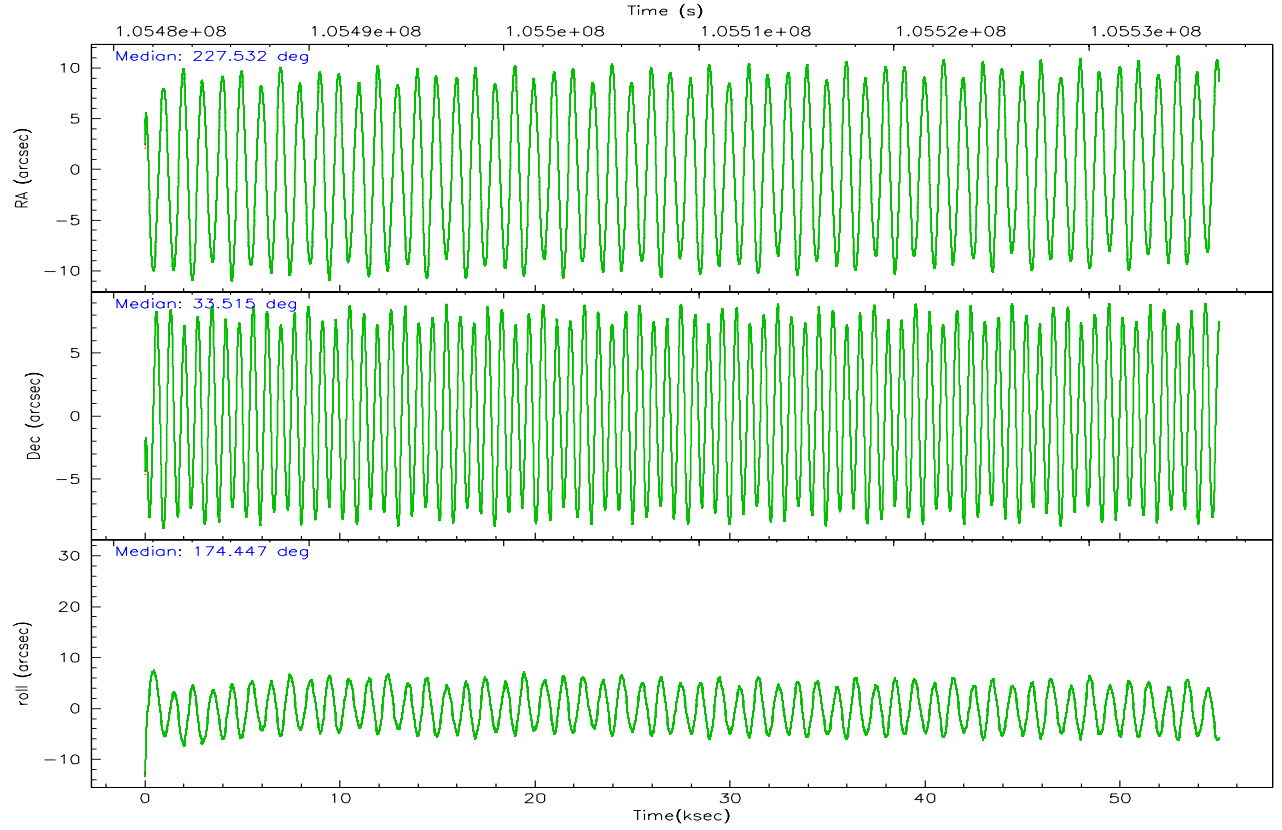
	ccd 0	ccd 1	ccd 2	ccd 3	ccd 6
grade 0 events	16539	44418	26125	54173	11642
	5%	13%	7%	15%	3%
grade 1 events	127	333	183	290	151
	0%	0%	0%	0%	0%
grade 2 events	7173	10464	8240	10865	5934
	2%	3%	2%	3%	1%
grade 3 events	3659	4821	3573	4531	3501
	1%	1%	1%	1%	1%
grade 4 events	3360	4786	3654	4675	3428
	1%	1%	1%	1%	1%
grade 5 events	9347	9904	8905	10347	10584
	3%	3%	2%	2%	3%
grade 6 events	5518	7142	5674	6644	5947
	1%	2%	1%	1%	1%
grade 7 events	237382	237325	279543	269460	258270
	83%	74%	83%	74%	86%

2.2 Compared Parameters

Parameter	Planned	Actual	Parameter	Planned	Actual
Instrument	ACIS	ACIS	Obspar format version number	6	6
Detector	ACIS-01236	ACIS-01236	Obspar file type	PREDICTED	ACTUAL
Grating	NONE	NONE	Obspar update status	NONE	UPDATED
Data mode	VFAINT	VFAINT	Number of optional ACIS chips dropped	0	0
Observation mode	POINTING	POINTING	On-chip summing requested	N	N
Pointing RA	227.561821	227.5318614679645	Subarray requested	NONE	NONE
Pointing Dec	33.526385	33.51500508575274	Alternating exposures requested	N	N
Pointing Roll	174.230664	174.4558964391505	Primary exposure time	0.000000	3.1
SIM focus pos (mm)	-0.782348	-0.7809083437167272			
SIM defocus (mm)	0	0.001439871863259334			
SIM translation stage pos (mm)	-233.592463	-233.5874344608287			
SIM translation stage offset (mm)	0	-0.005018542100998502			
Observation start time	105481774.184000	105480988.64274			
Observation start date	2001-05-05T20:28:30	2001-05-05T20:16:28			
Observation end time	105536671.184000	105536986.44492			
Observation end date	2001-05-06T11:43:27	2001-05-06T11:49:46			
Read mode	TIMED	TIMED			

2.3 Aspect



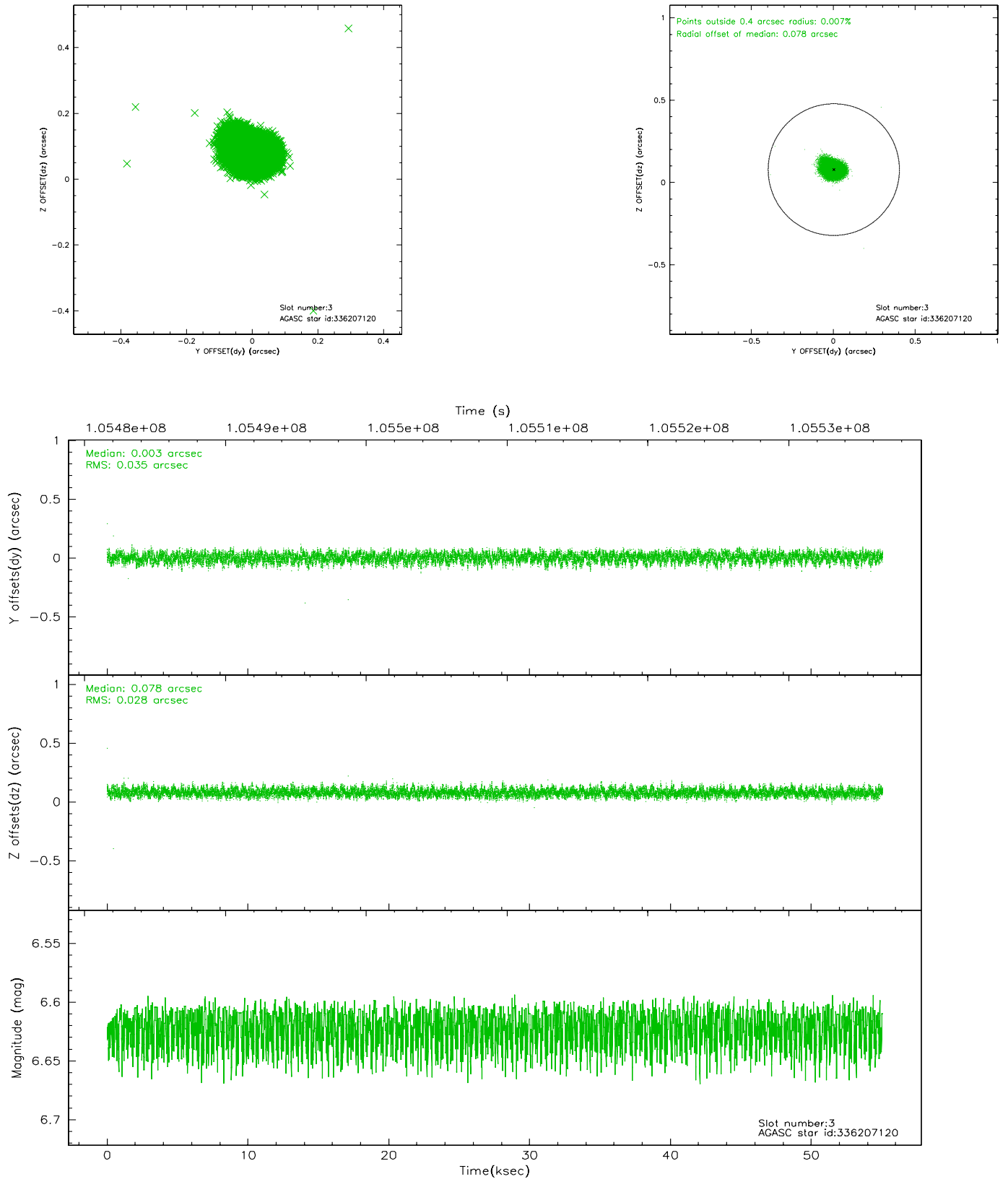


Slot Statistics

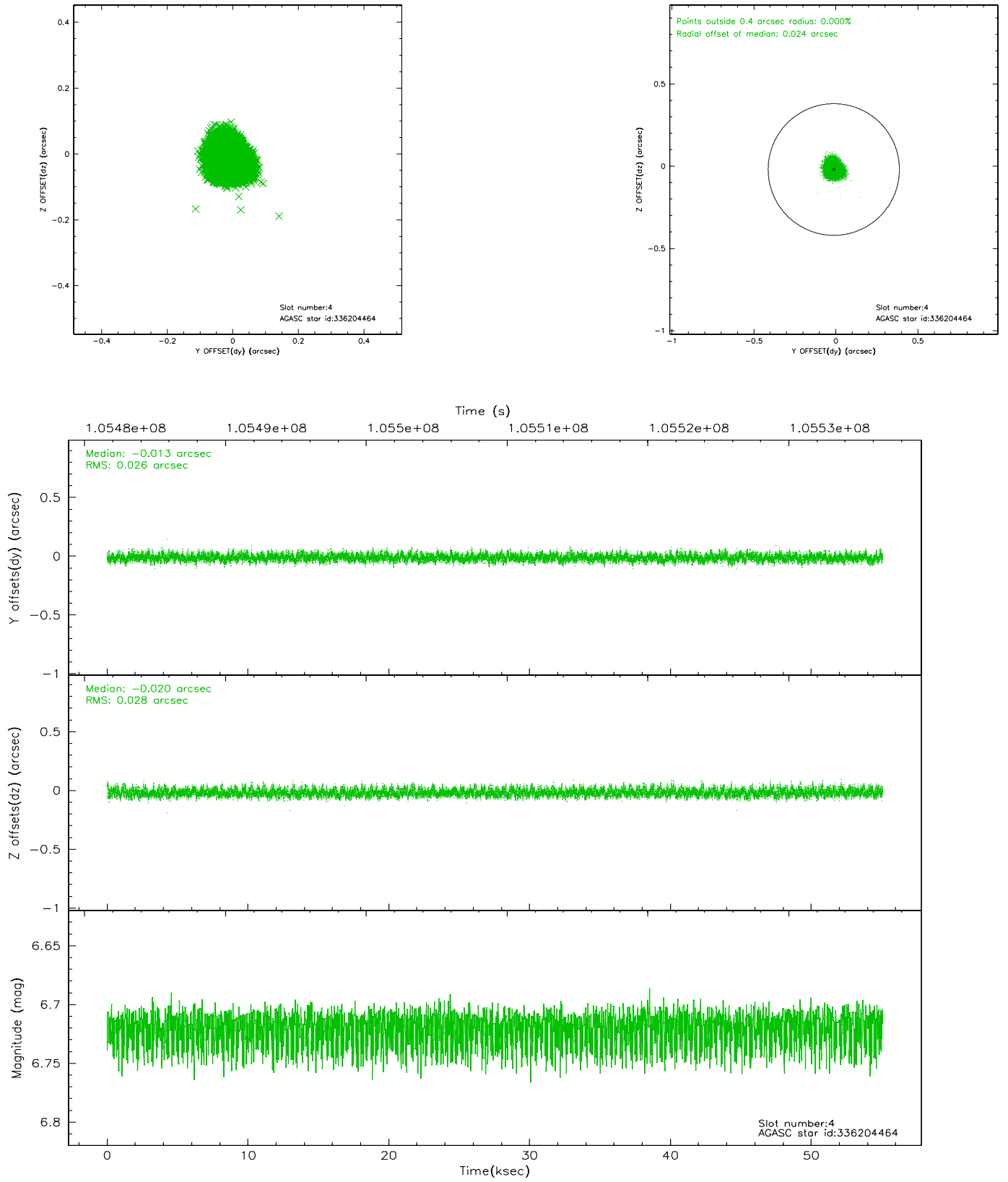
slot	status	id	mag	n_pts	med_dy	med_dz	dr1	dr2	ra	dec	mean_y	mean_z
0	FID	ACIS-I-2	7.15	13433	-0.024	-0.035	0.009	0.015	0.000000	0.000000	-756.32	-835.36
1	FID	ACIS-I-4	7.18	13431	-0.053	0.032	0.006	0.010	0.000000	0.000000	2157.71	1070.91
2	FID	ACIS-I-5	7.23	13431	-0.023	0.072	0.009	0.014	0.000000	0.000000	-1810.19	1068.74
3	GUIDE	336207120	6.62	26863	0.003	0.078	0.047	0.076	227.076767	33.706513	1511.40	-502.11
4	GUIDE	336204464	6.72	26866	-0.013	-0.020	0.041	0.065	227.662063	33.078883	-462.53	1572.34
5	GUIDE	336204600	6.96	26867	-0.045	-0.046	0.055	0.085	227.238782	33.265363	873.44	1031.42
6	GUIDE	336199880	8.35	26861	-0.049	0.066	0.051	0.083	227.783989	33.320747	-738.95	668.78
7	GUIDE	336207928	9.07	26851	0.106	-0.083	0.071	0.114	227.107778	33.476608	1339.32	312.71

2.4 Star Slots

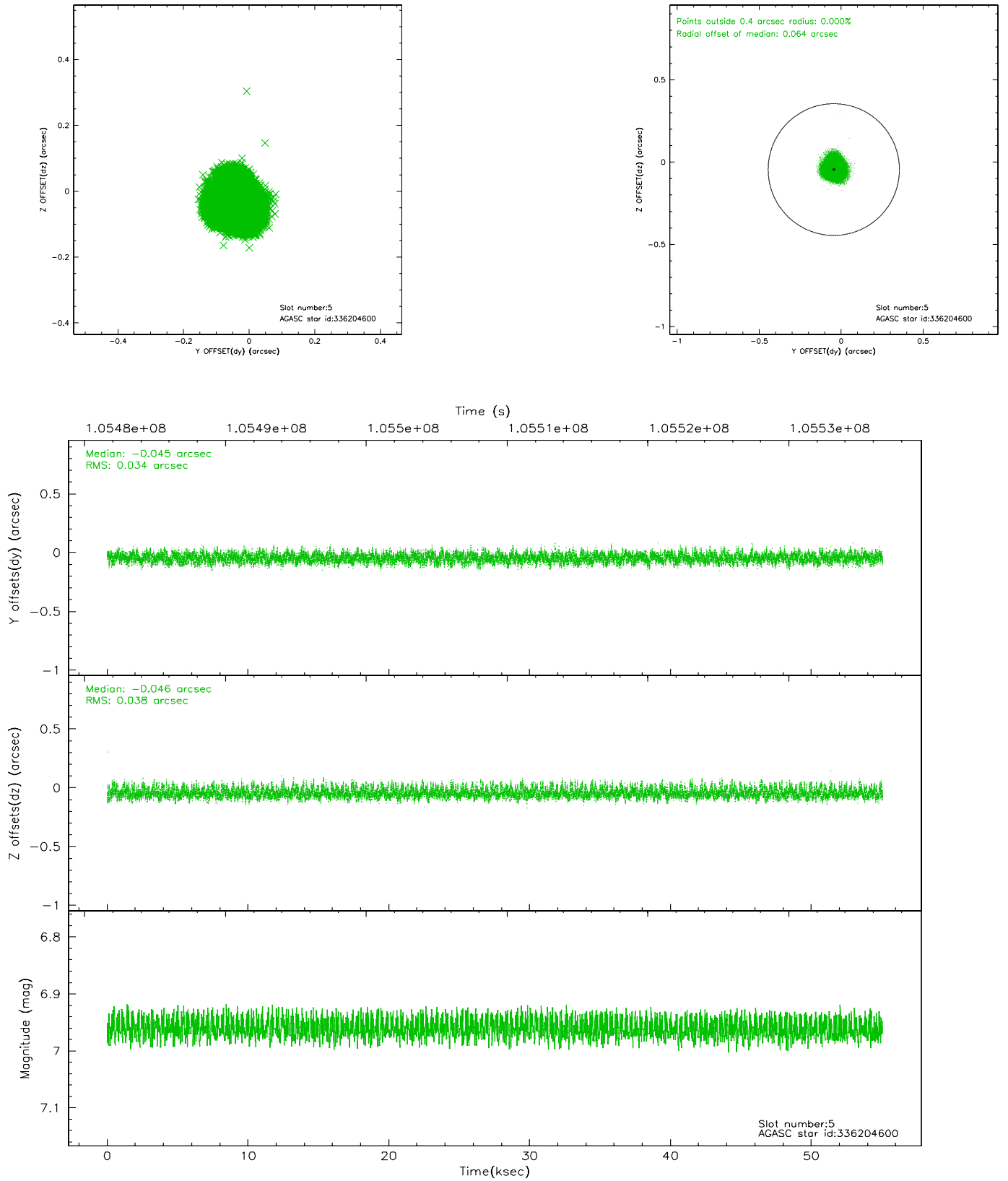
2.4.1 Slot 3



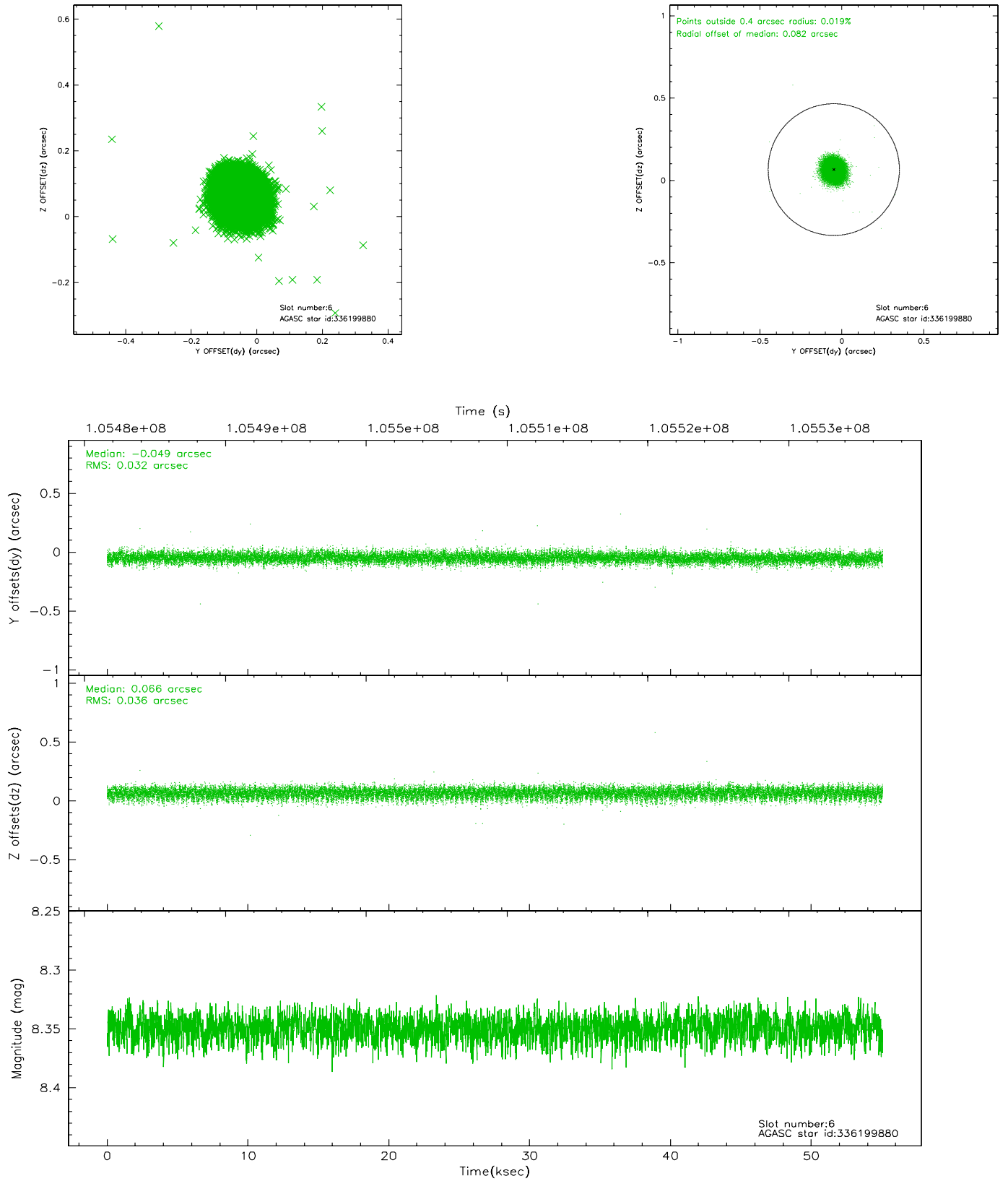
2.4.2 Slot 4



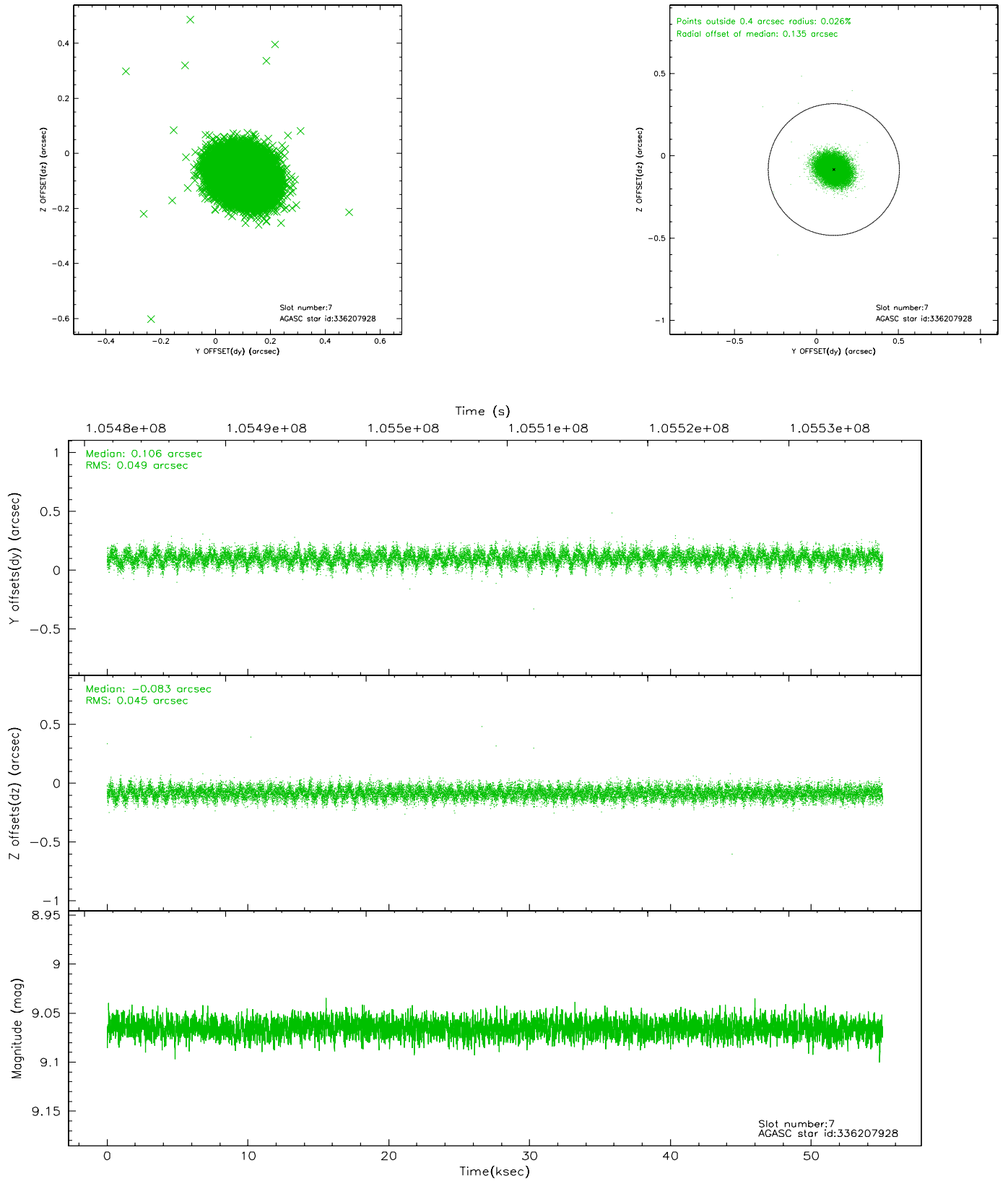
2.4.3 Slot 5



2.4.4 Slot 6

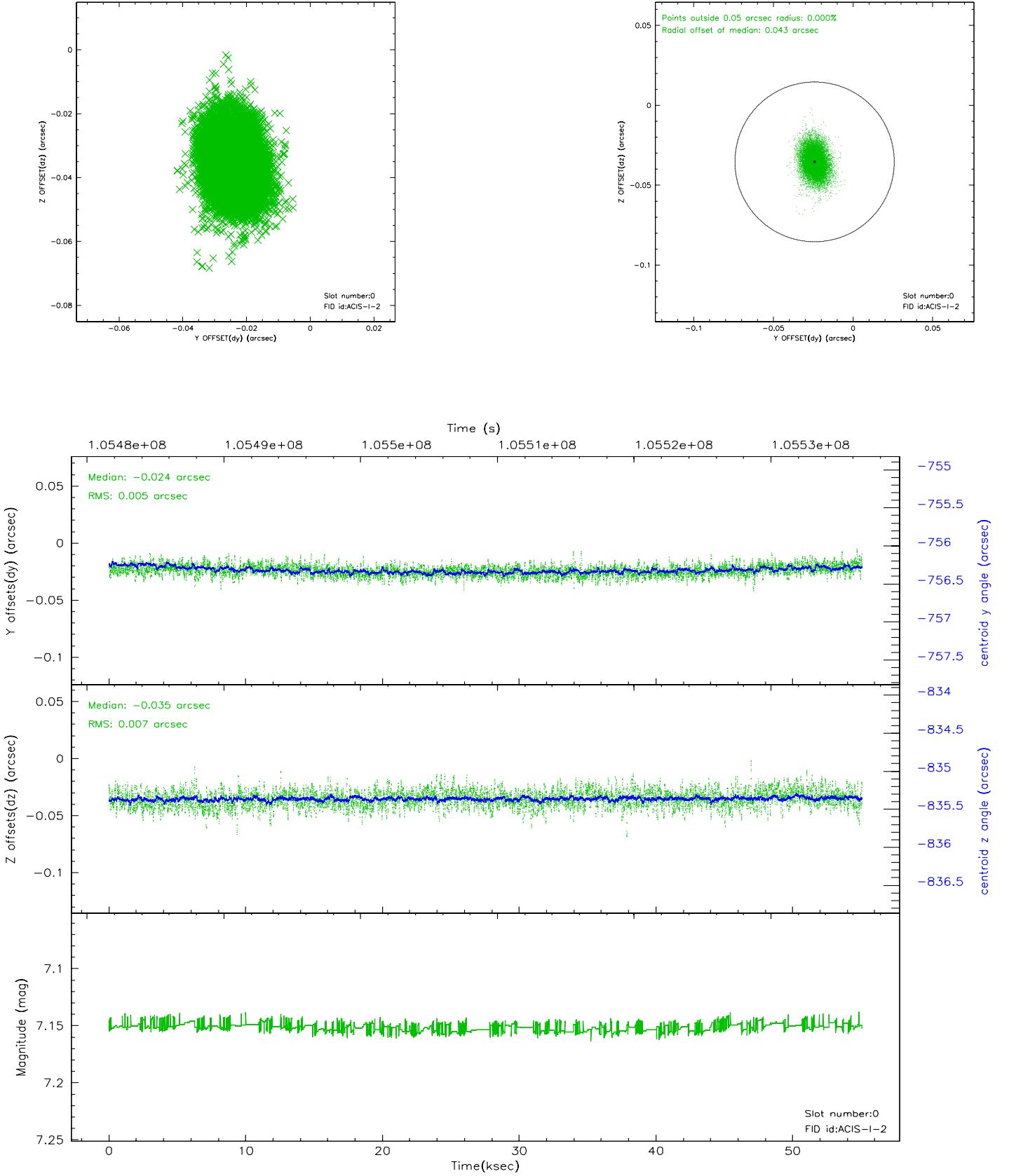


2.4.5 Slot 7

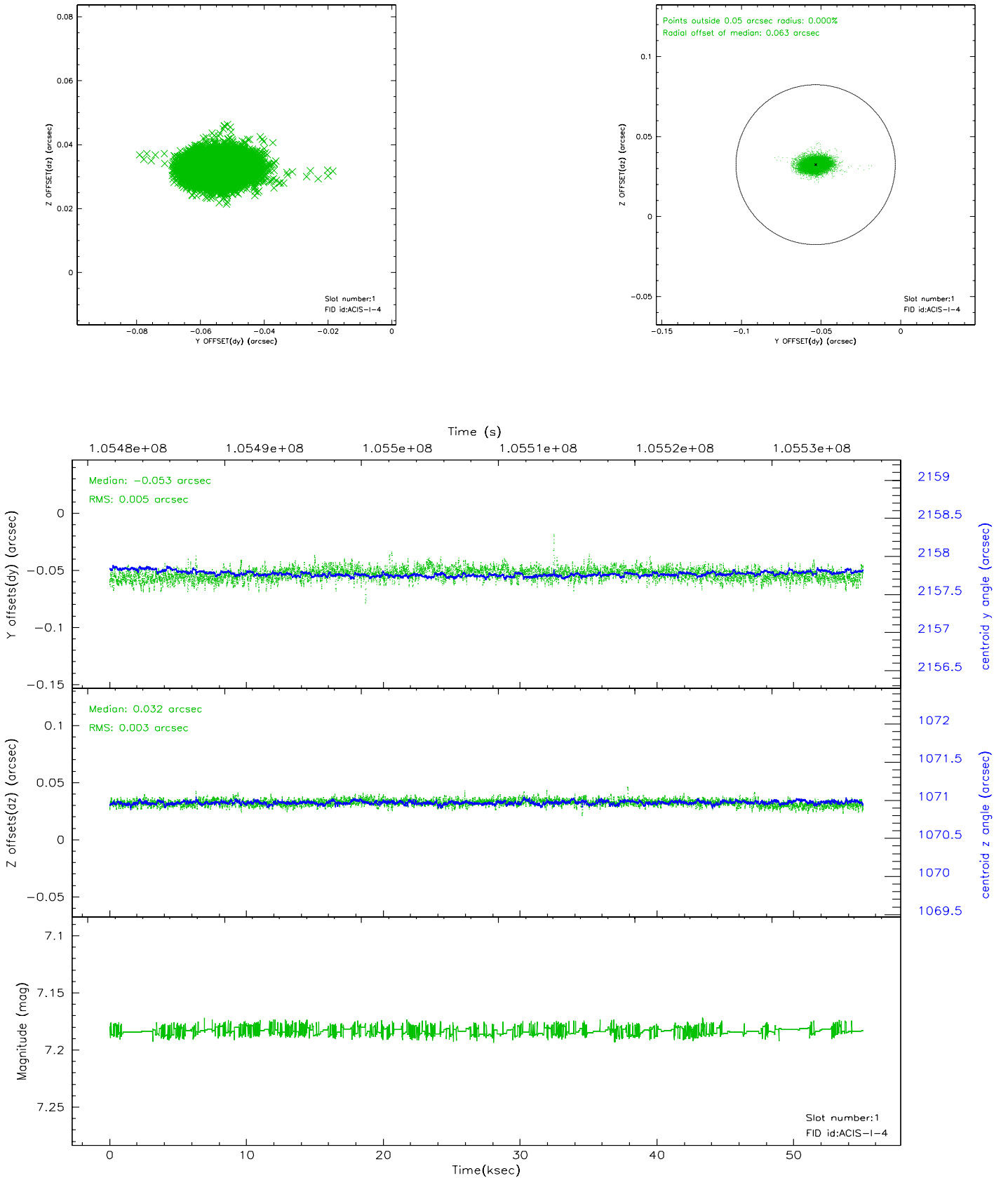


2.5 FID Slots

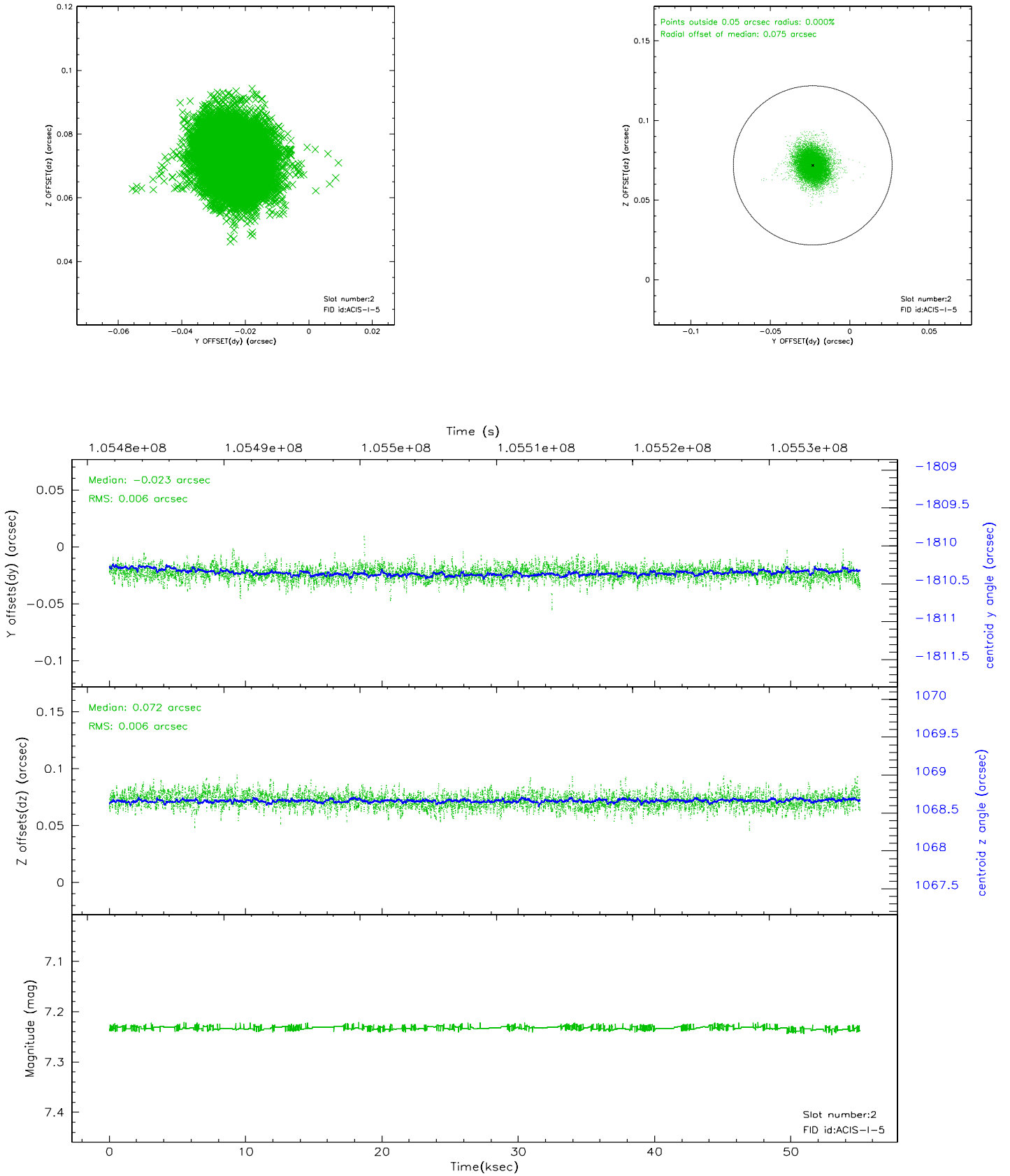
2.5.1 Slot 0



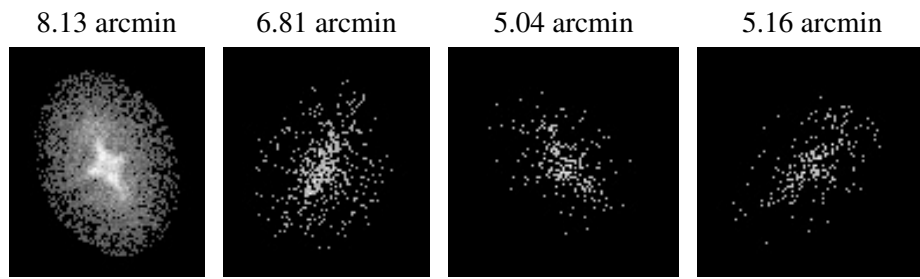
2.5.2 Slot 1



2.5.3 Slot 2



3 Point Sources



A Summary

A.1 Status

V&V Scientist	Beth Sundheim
V&V Date (YYYY-MM-DD)	2006.11.30
V&V Edition	1
V&V Disposition and Status	OK
V&V Charge Time	54.7

A.2 Comments