

V&V Reference Report

L2 ASCDS Version : 7.6.9

Observation 1663 - L2 Version 001
Chandra X-Ray Center

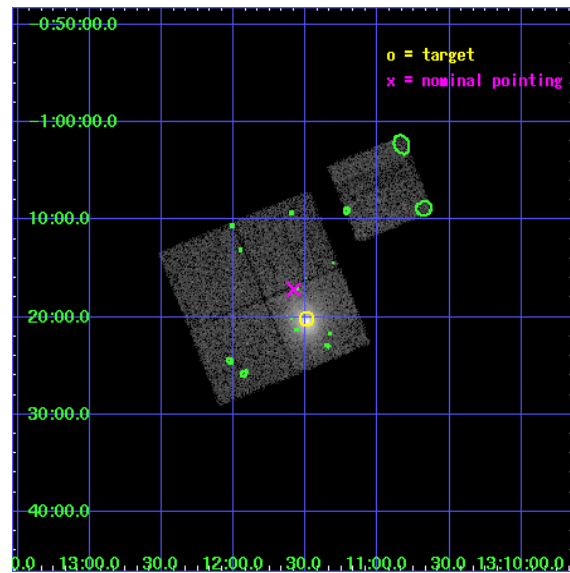
L2 Processing Date : Nov 2 2006

Contents

1	Front	2
2	OBI	3
2.1	OBI	3
2.1.1	Images	3
2.1.2	Bias	3
2.1.3	Parameters	4
2.1.4	Events	4
2.2	Compared Parameters	5
2.3	Aspect	6
2.4	Star Slots	9
2.4.1	Slot 3	9
2.4.2	Slot 4	10
2.4.3	Slot 5	11
2.4.4	Slot 6	12
2.4.5	Slot 7	13
2.5	FID Slots	14
2.5.1	Slot 0	14
2.5.2	Slot 1	15
2.5.3	Slot 2	16
3	Point Sources	17
A	Summary	18
A.1	Status	18
A.2	Comments	18

1 Front

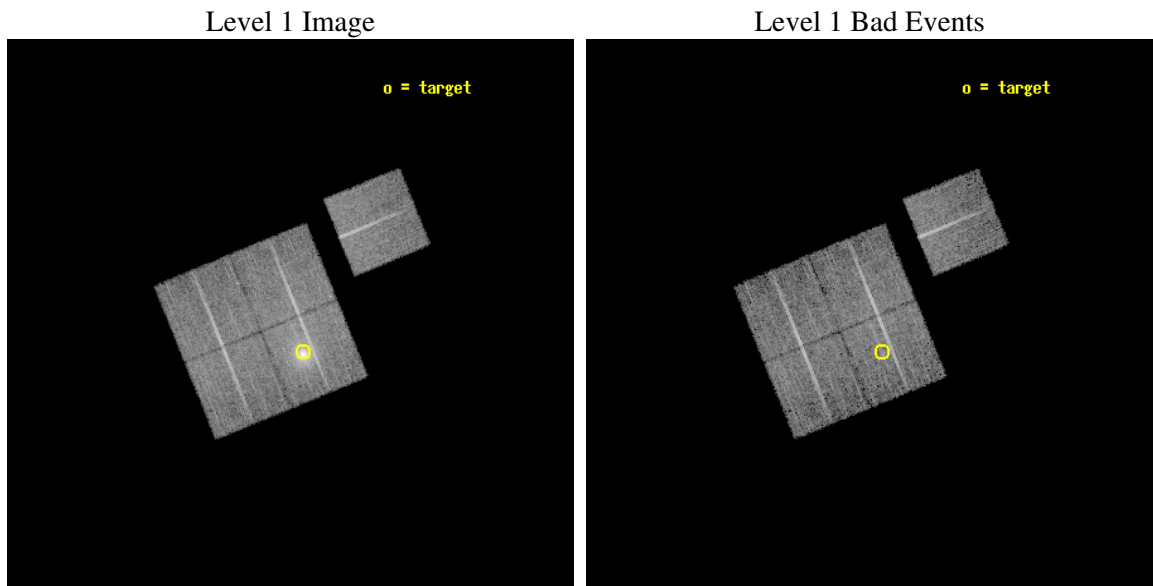
seq_num	800131
obs_id	1663
title	DETERMINATION OF H0 AND Q0, 2000 PART 1
observer	DR. LEON VANSPEYBROECK
object	A1689
dtcycle	0
cycle	P
ra_targ	197.872917
dec_targ	-1.336
ra_nom	197.89539921738
dec_nom	-1.2863567204577
roll_nom	67.828173353973
revision	2
ontime	10868.599979103
livetime	10726.593719029
ontime0	10865.458998933
ontime1	10868.599979103
ontime2	10868.599979103
ontime3	10868.599979103
ontime6	10868.599979103
l2events	68526



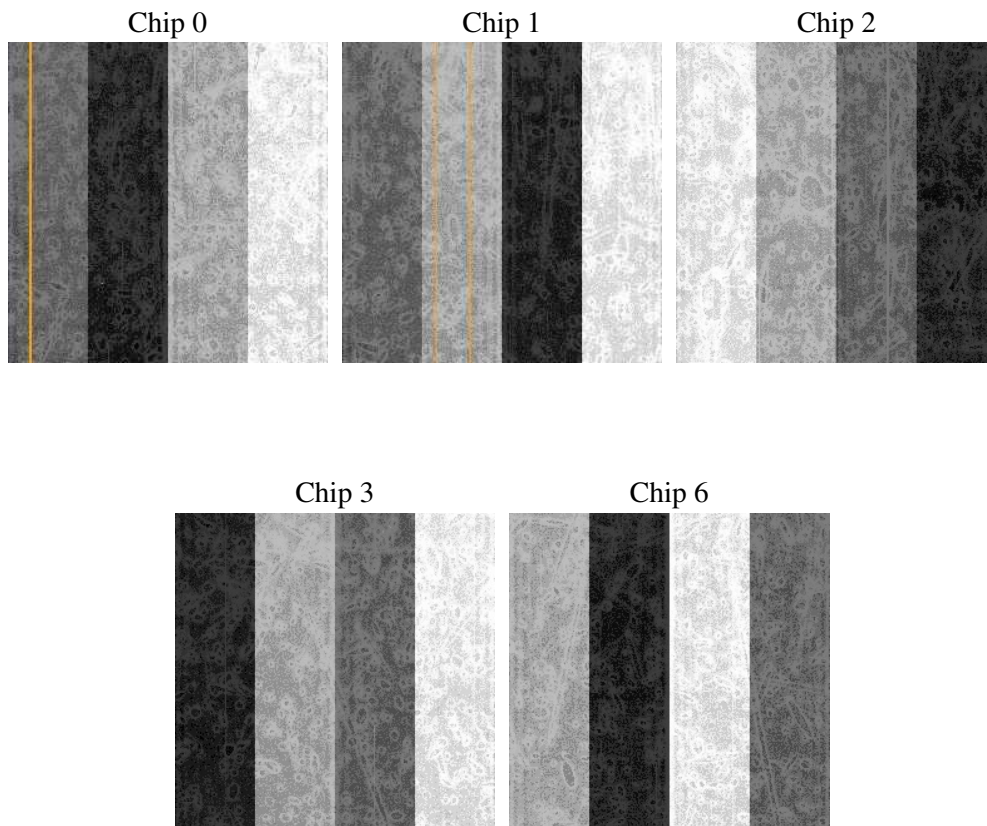
2 OBI

2.1 OBI

2.1.1 Images



2.1.2 Bias



2.1.3 Parameters

obi_num	0
ascdsver	7.6.9
caldbver	3.2.3
date	2006-11-02T13:01:46
revision	2

sched_exp_time	10956.829000
ontime	12400.662385672
ontime0	12397.521425411
ontime1	12400.662385672
ontime2	12400.662385672
ontime3	12400.662385672
ontime6	12400.662385672
l1events	411555

2.1.4 Events

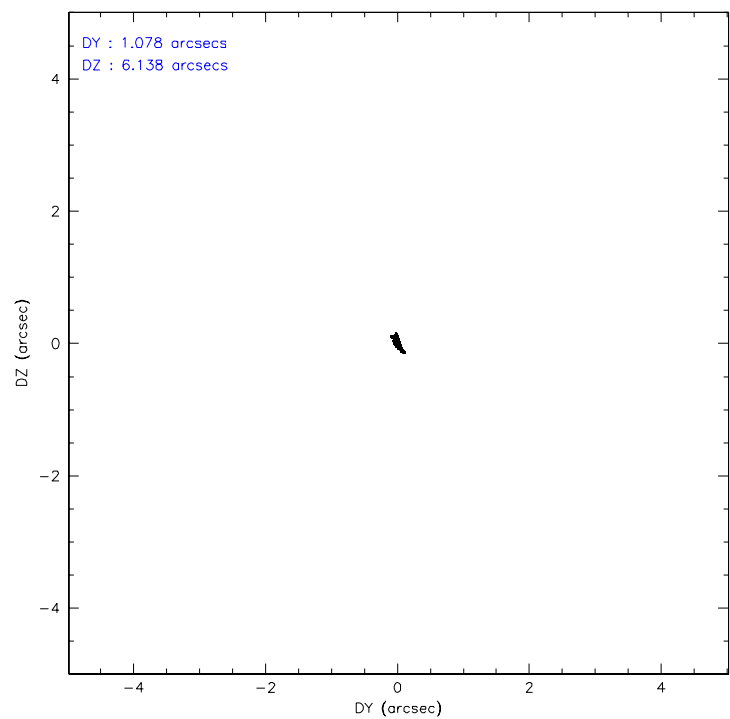
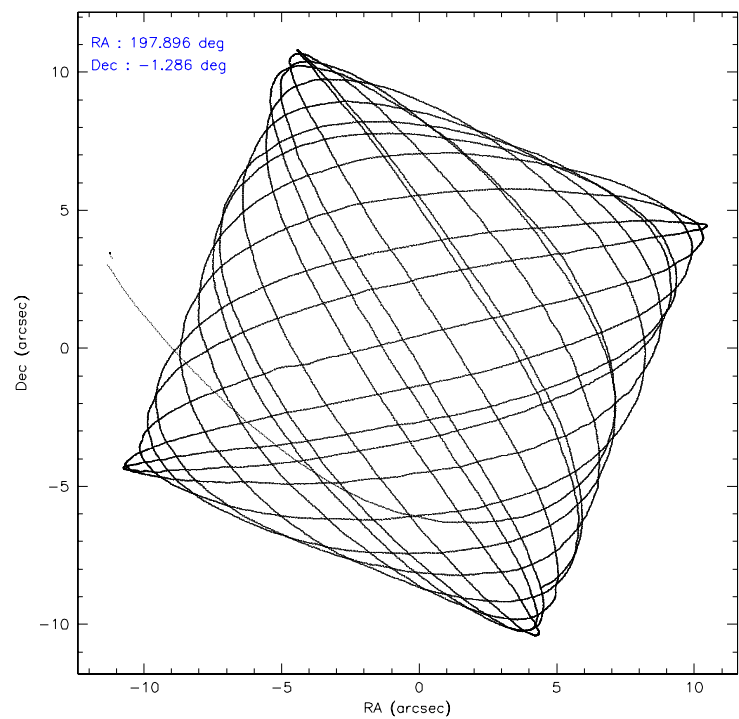
	ccd 0	ccd 1	ccd 2	ccd 3	ccd 6
level 1 events	73003	74361	78945	106986	78260
rejected events	63416	64169	68984	70217	69079
rejected %	86%	86%	87%	65%	88%

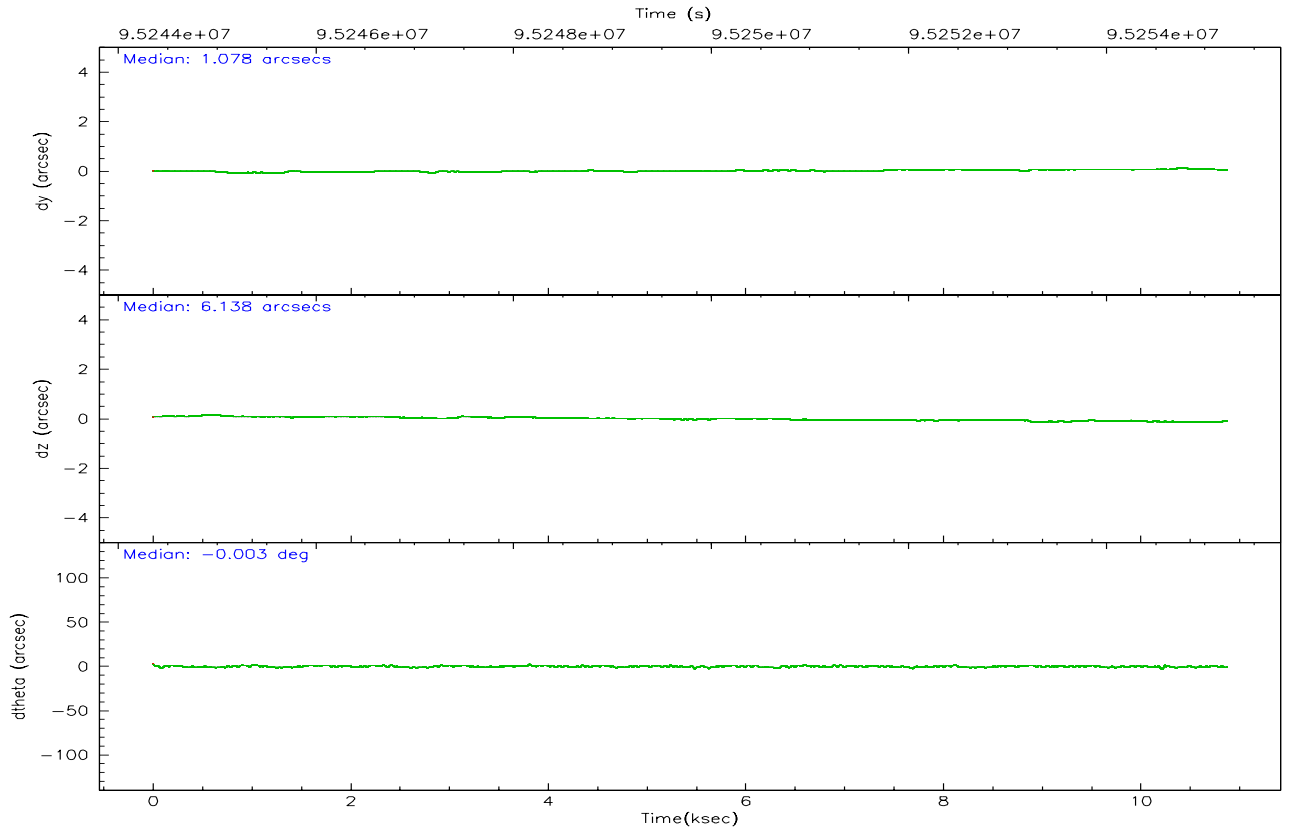
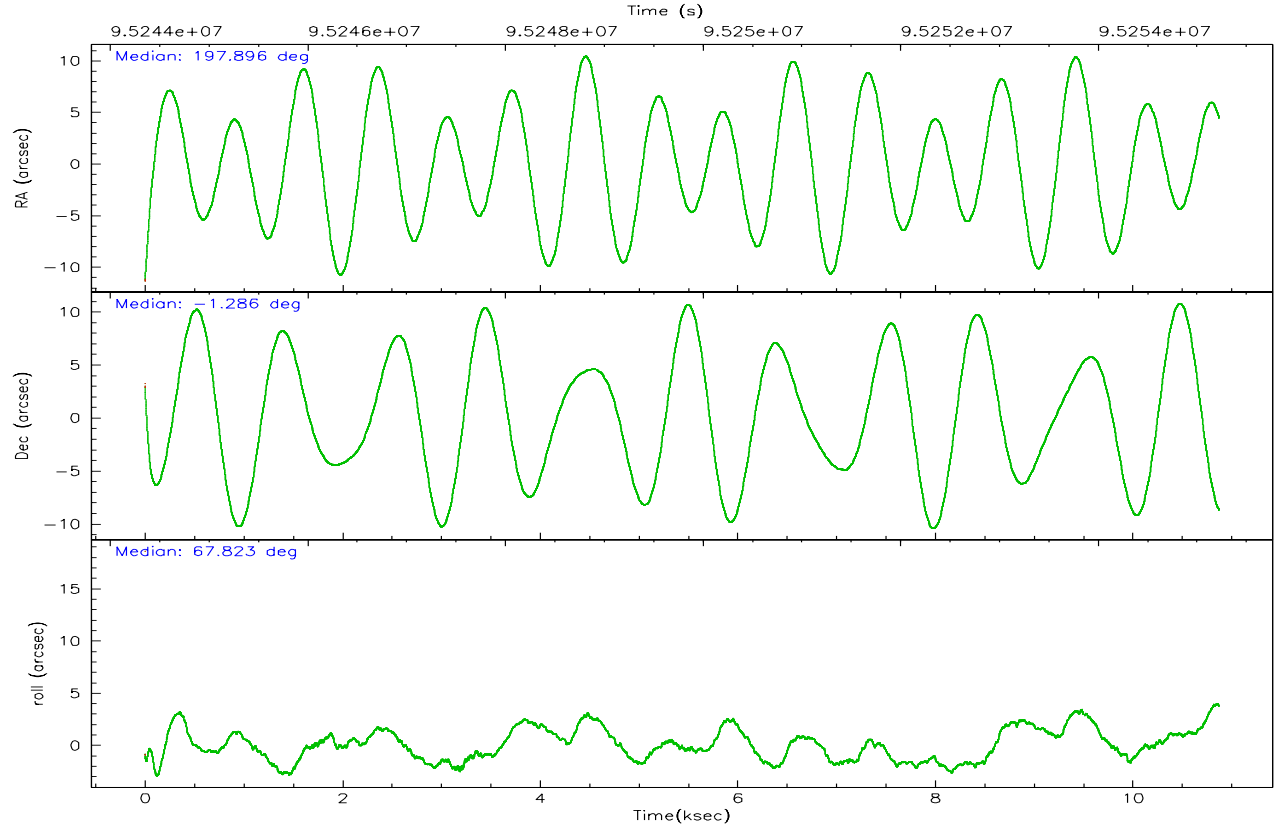
	ccd 0	ccd 1	ccd 2	ccd 3	ccd 6
grade 0 events	4690	4752	5175	27075	4164
	6%	6%	6%	25%	5%
grade 1 events	27	31	35	117	37
	0%	0%	0%	0%	0%
grade 2 events	2501	2614	2384	5191	2376
	3%	3%	3%	4%	3%
grade 3 events	876	962	883	1649	893
	1%	1%	1%	1%	1%
grade 4 events	844	968	851	1715	868
	1%	1%	1%	1%	1%
grade 5 events	2676	2925	2513	2946	3062
	3%	3%	3%	2%	3%
grade 6 events	1840	2035	1864	2553	1971
	2%	2%	2%	2%	2%
grade 7 events	59549	60074	65240	65740	64889
	81%	80%	82%	61%	82%

2.2 Compared Parameters

Parameter	Planned	Actual	Parameter	Planned	Actual
Instrument	ACIS	ACIS	Obspar format version number	6	6
Detector	ACIS-01236	ACIS-01236	Obspar file type	PREDICTED	ACTUAL
Grating	NONE	NONE	Obspar update status	NONE	UPDATED
Data mode	FAINT	FAINT	Number of optional ACIS chips dropped	0	0
Observation mode	POINTING	POINTING	On-chip summing requested	N	N
Pointing RA	197.899087	197.8953992173802	Subarray requested	NONE	NONE
Pointing Dec	-1.313615	-1.286356720457748	Alternating exposures requested	N	N
Pointing Roll	67.619573	67.8281733539734	Primary exposure time	0.000000	3.1
SIM focus pos (mm)	-0.782348	-0.7809083437167272			
SIM defocus (mm)	0	0.001439871863259334			
SIM translation stage pos (mm)	-225.840463	-225.8458576473255			
SIM translation stage offset (mm)	-7.752	-7.746595355604228			
Observation start time	95244268.184000	95242778.309793			
Observation start date	2001-01-07T08:43:24	2001-01-07T08:19:38			
Observation end time	95255225.184000	95255539.56028201			
Observation end date	2001-01-07T11:46:01	2001-01-07T11:52:19			
Read mode	TIMED	TIMED			

2.3 Aspect



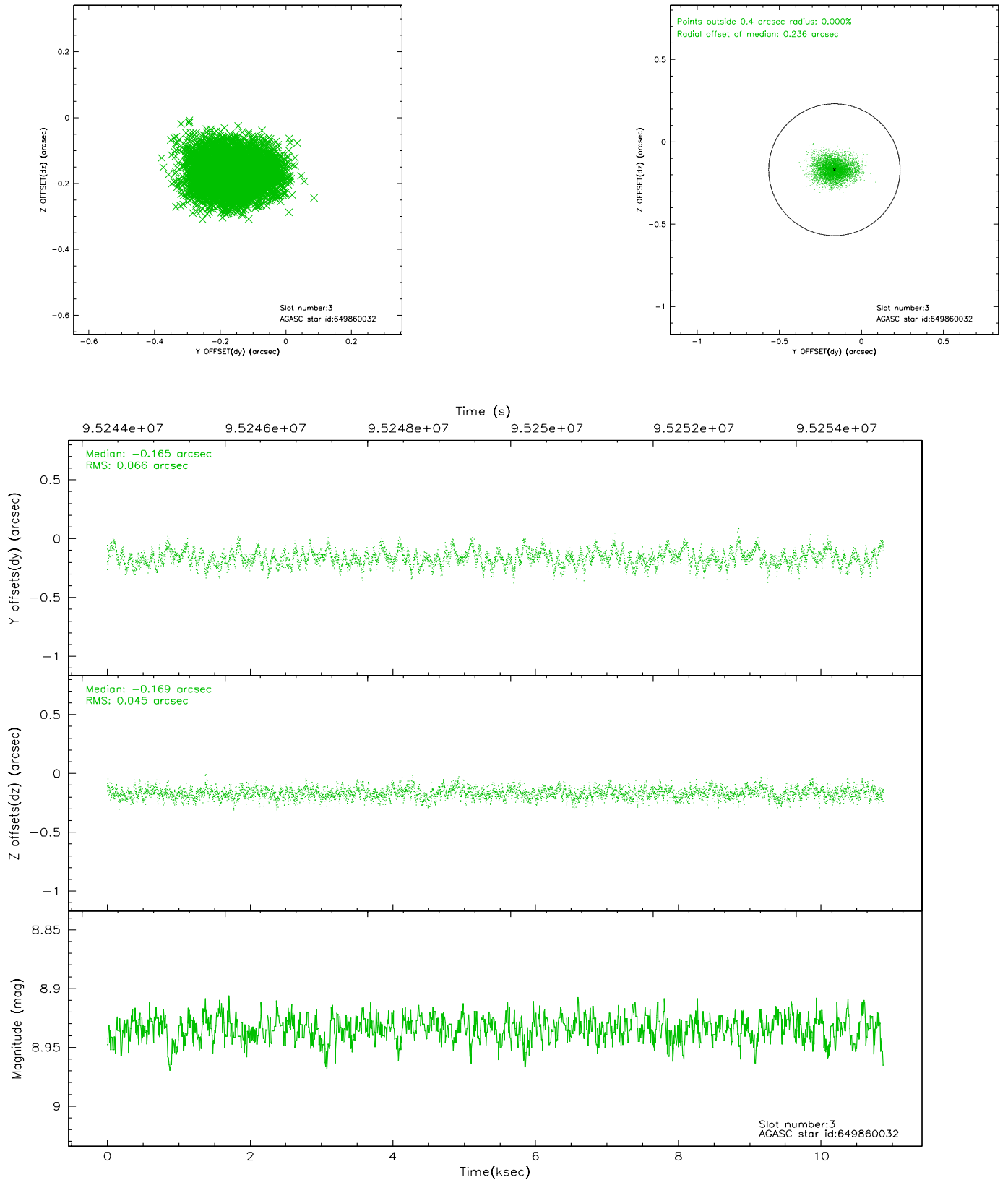


Slot Statistics

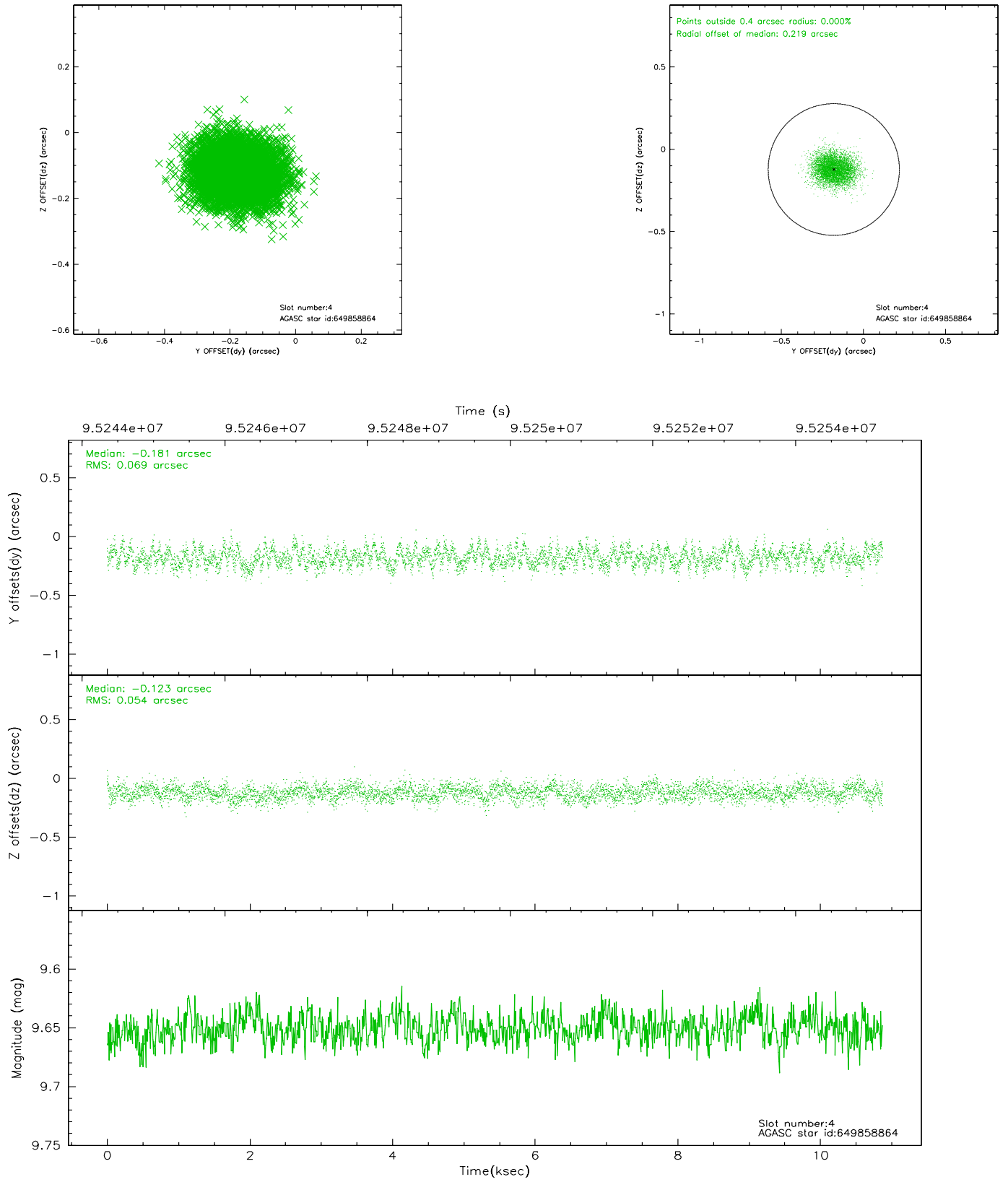
slot	status	id	mag	n_pts	med_dy	med_dz	dr1	dr2	ra	dec	mean_y	mean_z
0	FID	ACIS-I-2	7.18	2653	-0.031	-0.023	0.009	0.015	0.000000	0.000000	-755.98	-993.90
1	FID	ACIS-I-4	7.15	2653	-0.090	0.033	0.006	0.010	0.000000	0.000000	2157.74	912.01
2	FID	ACIS-I-5	7.22	2653	0.021	0.059	0.009	0.014	0.000000	0.000000	-1808.76	909.40
3	GUIDE	649860032	8.93	5305	-0.165	-0.169	0.085	0.140	197.517008	-0.616758	1794.71	2227.80
4	GUIDE	649858864	9.65	5304	-0.181	-0.123	0.094	0.150	197.684428	-0.695156	1763.63	1563.57
5	GUIDE	649729680	9.69	5302	0.171	-0.005	0.112	0.180	197.477731	-1.403690	-877.88	1279.60
6	GUIDE	649856976	9.83	5294	0.108	0.056	0.110	0.192	197.988518	-1.476151	-419.45	-519.43
7	GUIDE	649857296	10.06	5302	0.071	0.244	0.129	0.210	198.284356	-1.527390	-184.58	-1574.27

2.4 Star Slots

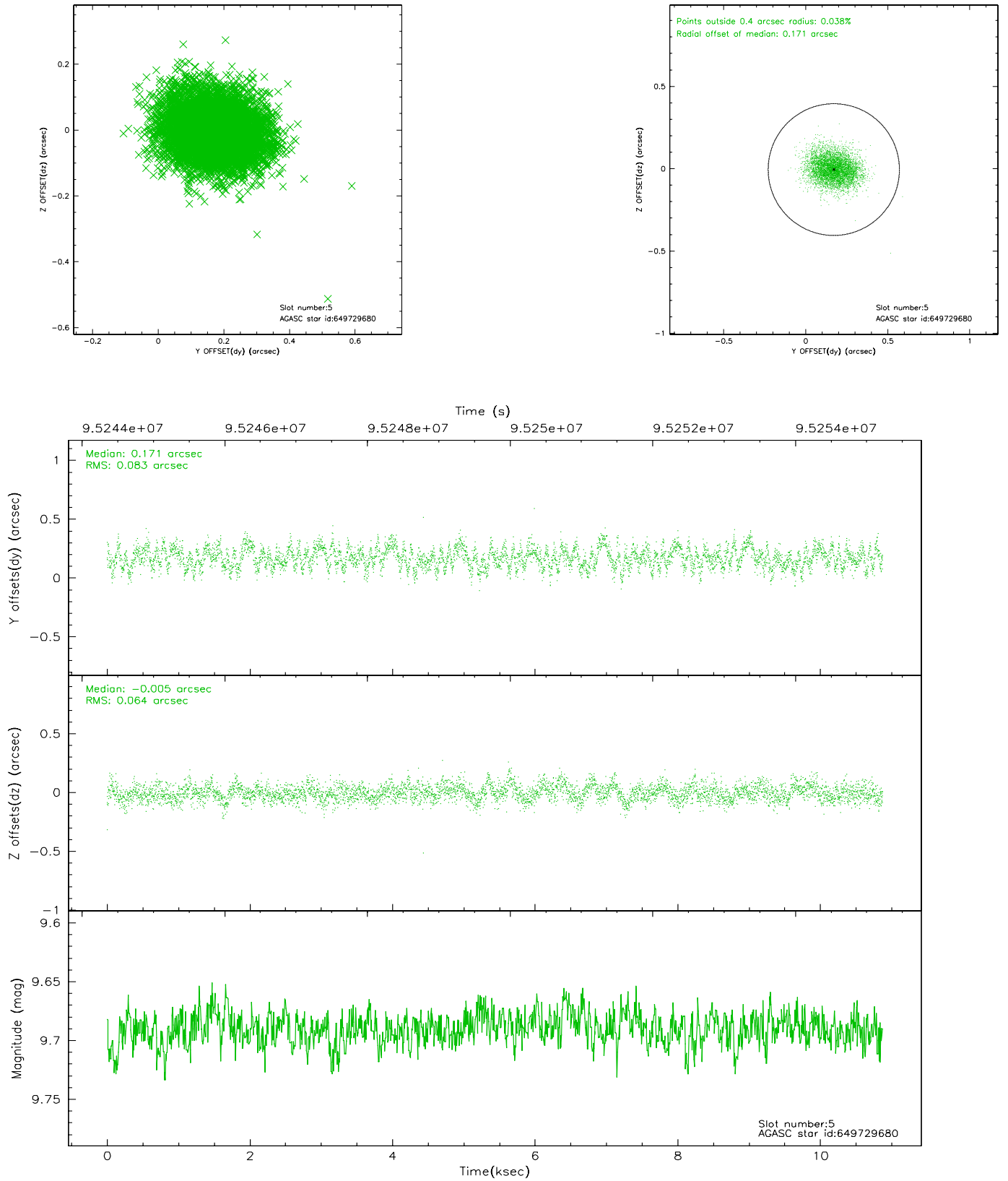
2.4.1 Slot 3



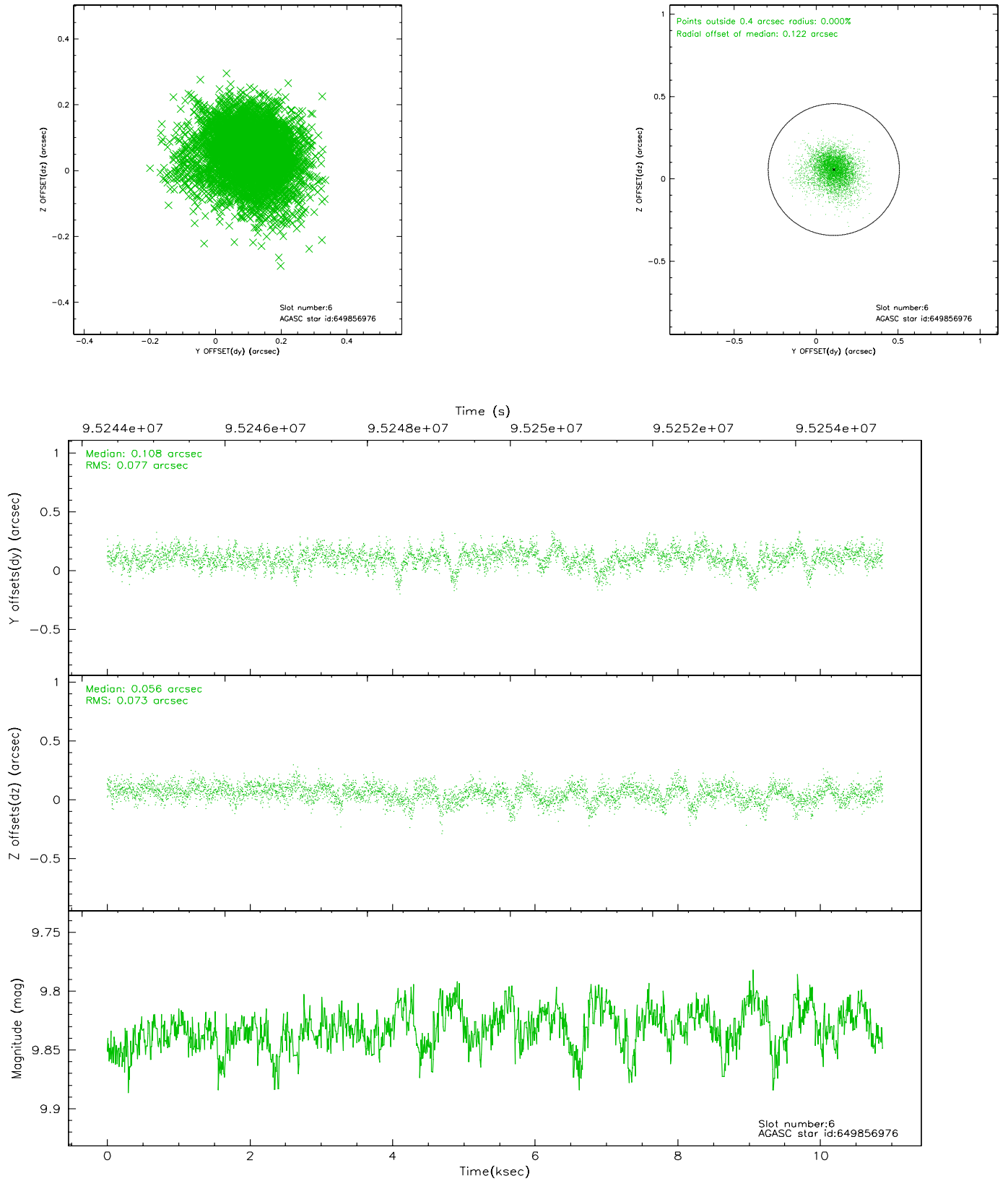
2.4.2 Slot 4



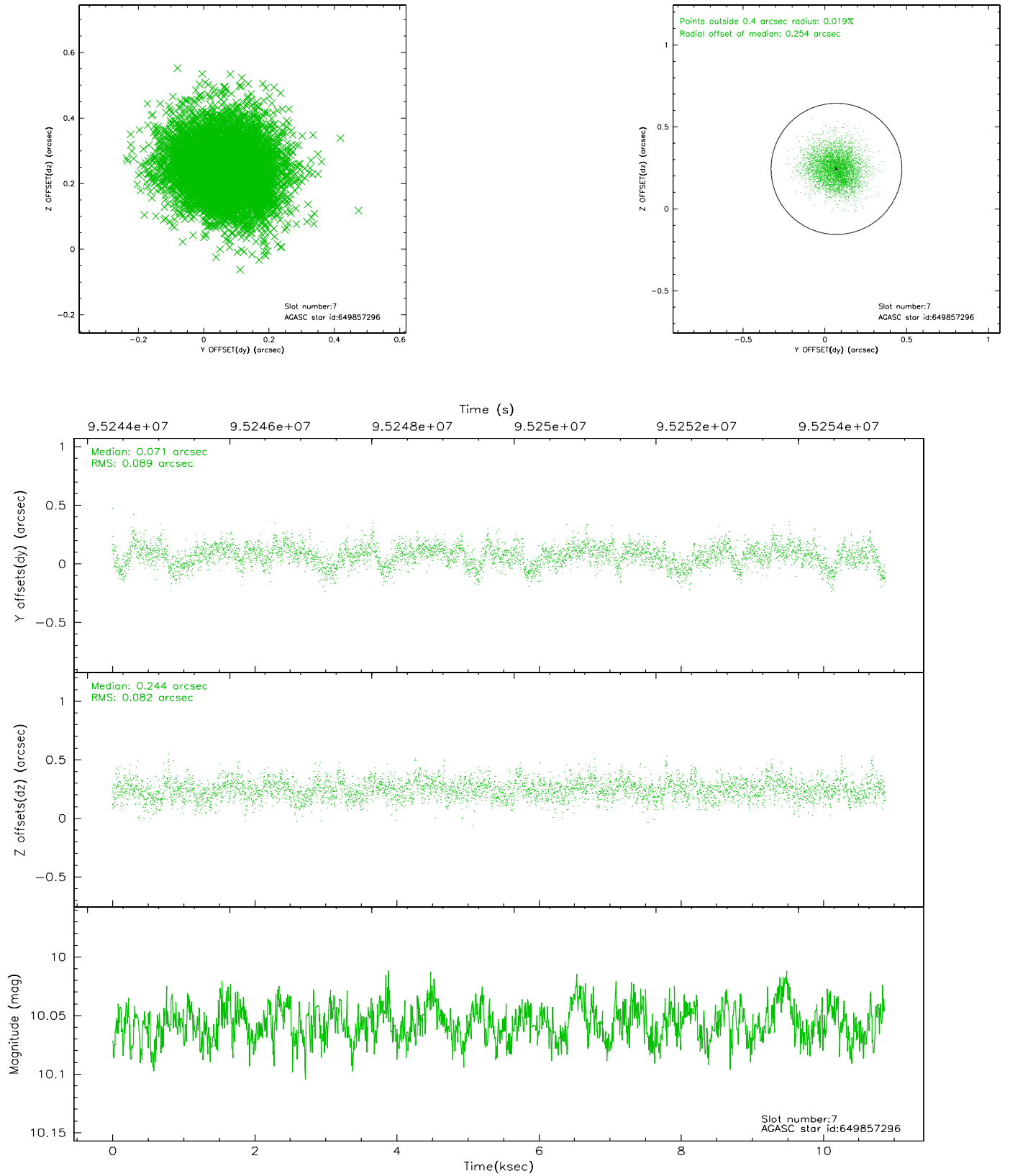
2.4.3 Slot 5



2.4.4 Slot 6

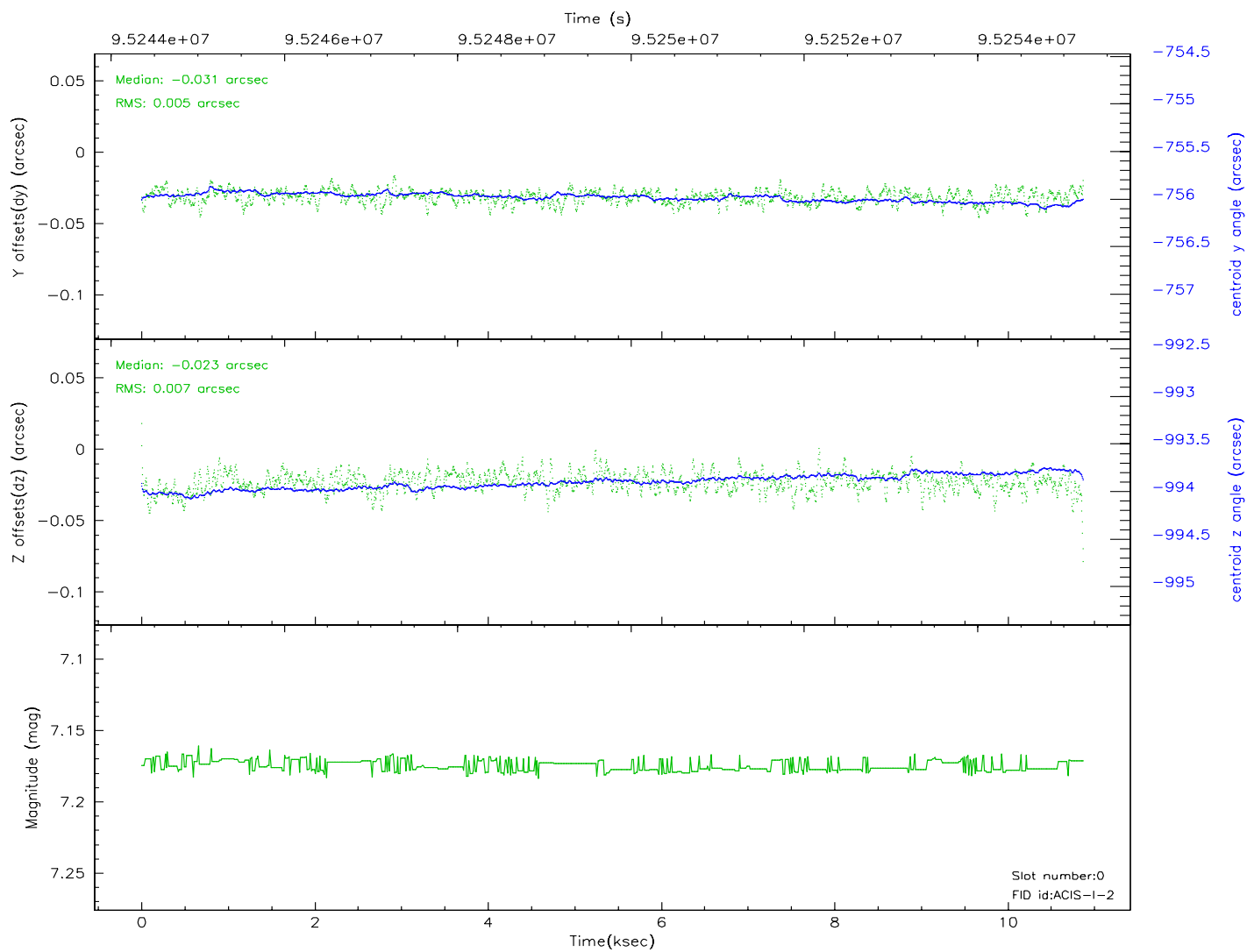
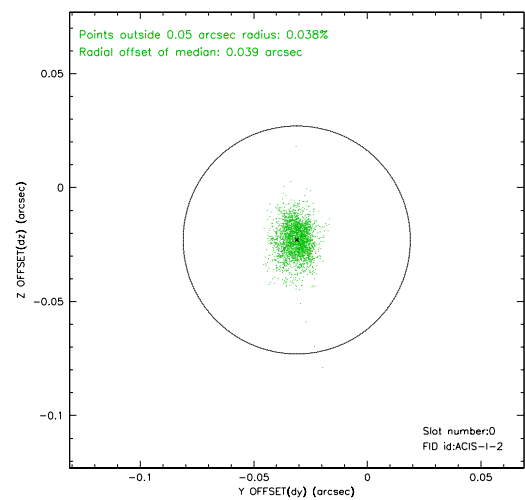
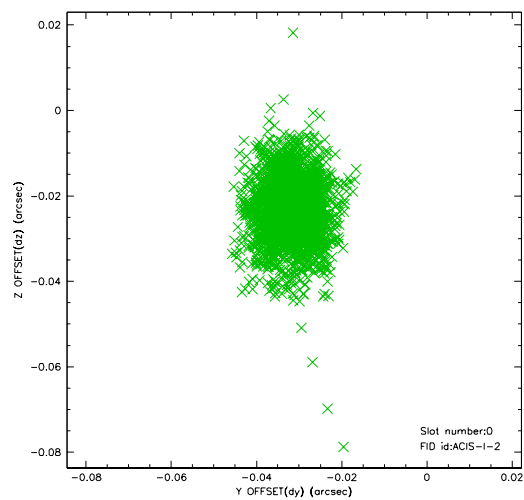


2.4.5 Slot 7

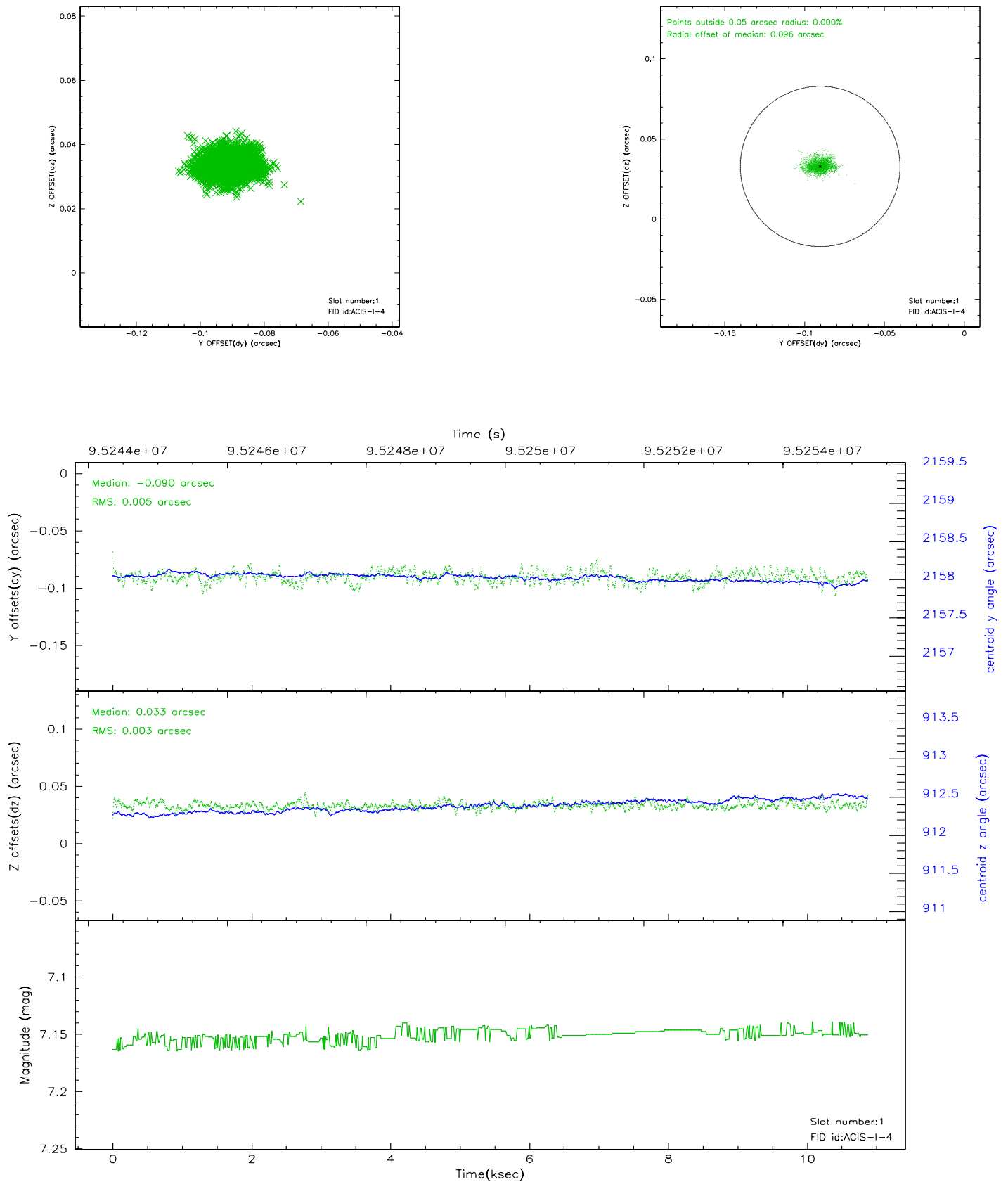


2.5 FID Slots

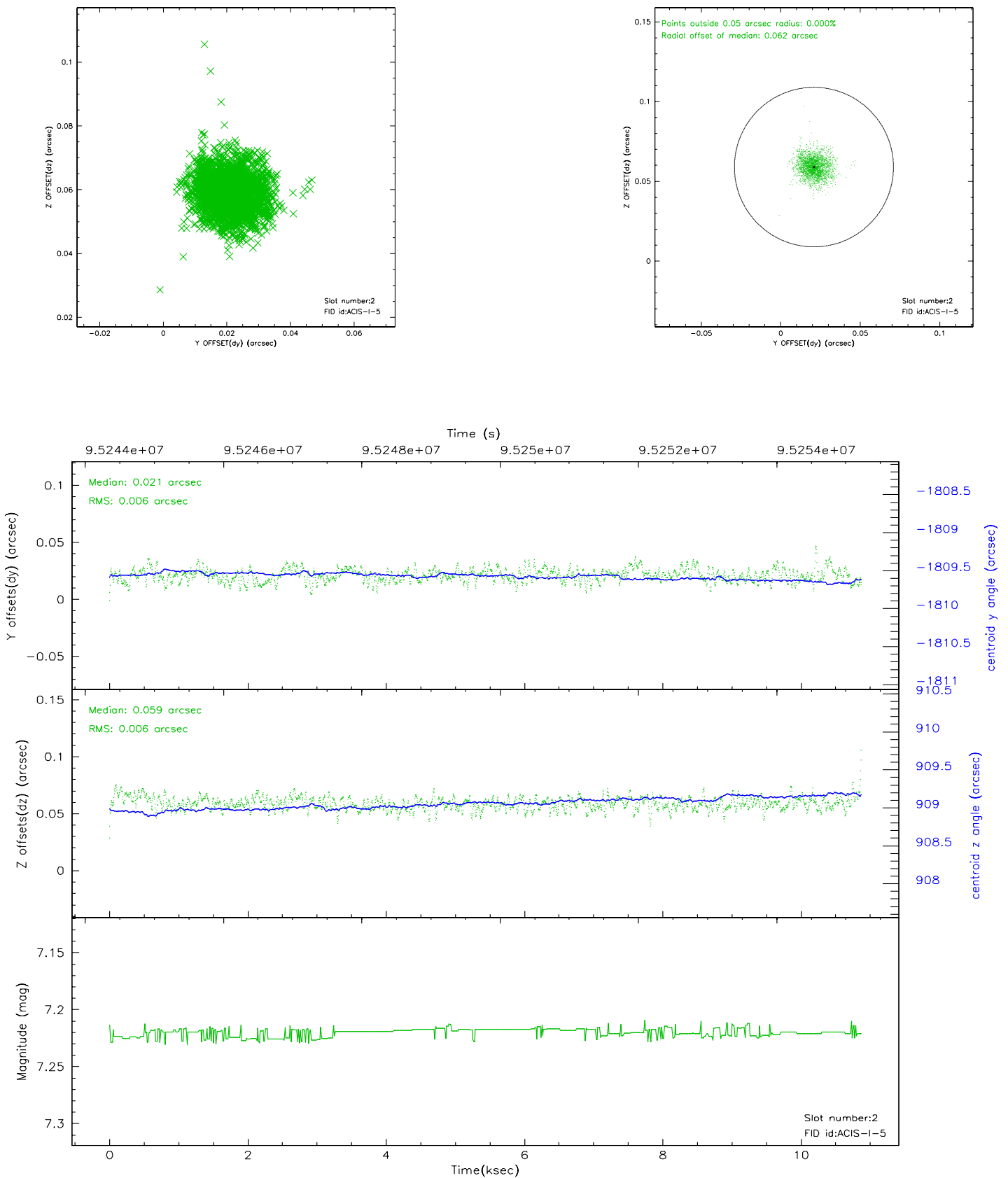
2.5.1 Slot 0



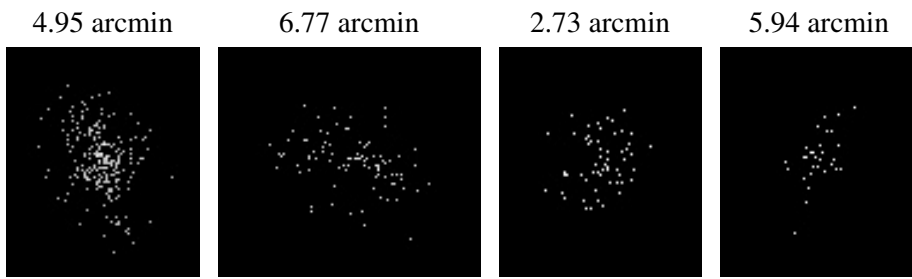
2.5.2 Slot 1



2.5.3 Slot 2



3 Point Sources



A Summary

A.1 Status

V&V Scientist	Jen Lauer
V&V Date (YYYY-MM-DD)	2006.11.02
V&V Edition	1
V&V Disposition and Status	OK
V&V Charge Time	10.868

A.2 Comments