

V&V Reference Report

L2 ASCDS Version : 7.6.10

Observation 1645 - L2 Version 001
Chandra X-Ray Center

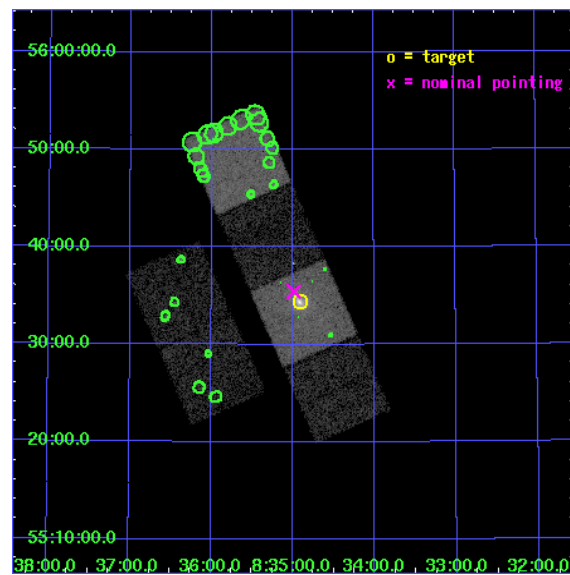
L2 Processing Date : Jun 9 2007

Contents

1	Front	2
2	OBI	3
2.1	OBI	3
2.1.1	Images	3
2.1.2	Bias	3
2.1.3	Parameters	4
2.1.4	Events	4
2.2	Compared Parameters	5
2.3	Aspect	6
2.4	Star Slots	9
2.4.1	Slot 3	9
2.4.2	Slot 4	10
2.4.3	Slot 5	11
2.4.4	Slot 6	12
2.4.5	Slot 7	13
2.5	FID Slots	14
2.5.1	Slot 0	14
2.5.2	Slot 1	15
2.5.3	Slot 2	16
3	Point Sources	17
A	Summary	18
A.1	Status	18
A.2	Comments	18

1 Front

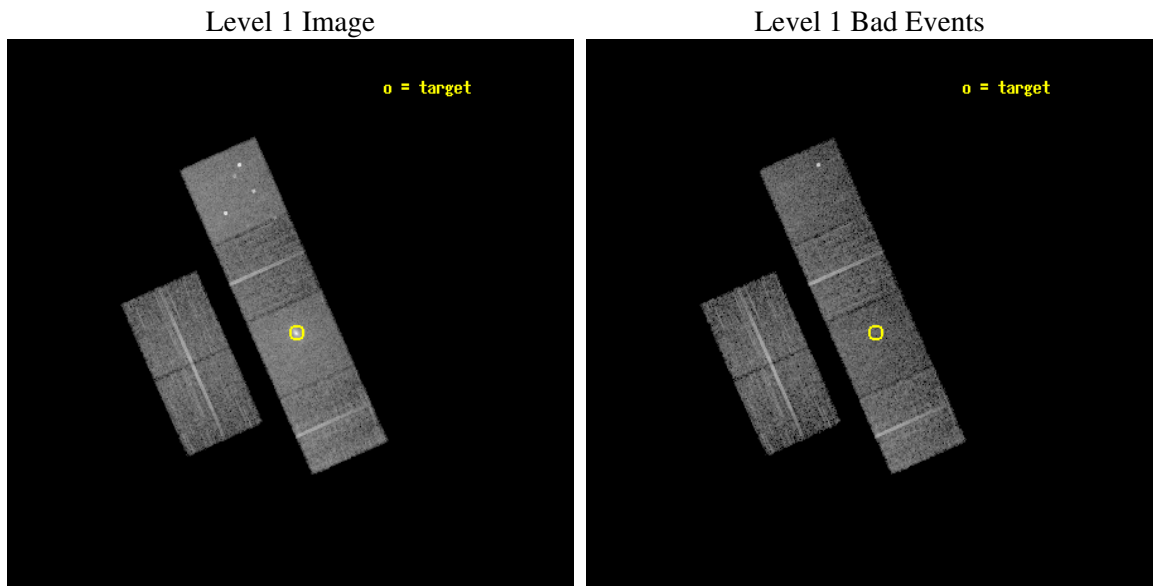
seq_num	800113
obs_id	1645
title	THE COOLING FLOW IN 4C55.16
observer	Professor Andrew Fabian
object	4C55.16
dtcycle	0
cycle	P
ra_targ	128.72875
dec_targ	55.5725
ra_nom	128.74664565165
dec_nom	55.590877086211
roll_nom	66.123401121308
revision	2
ontime	9190.4000085592
livetime	9074.0256298563
ontime2	9190.4000085592
ontime3	9190.4000085592
ontime5	9190.4000085592
ontime6	9190.4000085592
ontime7	9190.4000085592
ontime8	9190.4000085592
l2events	95975



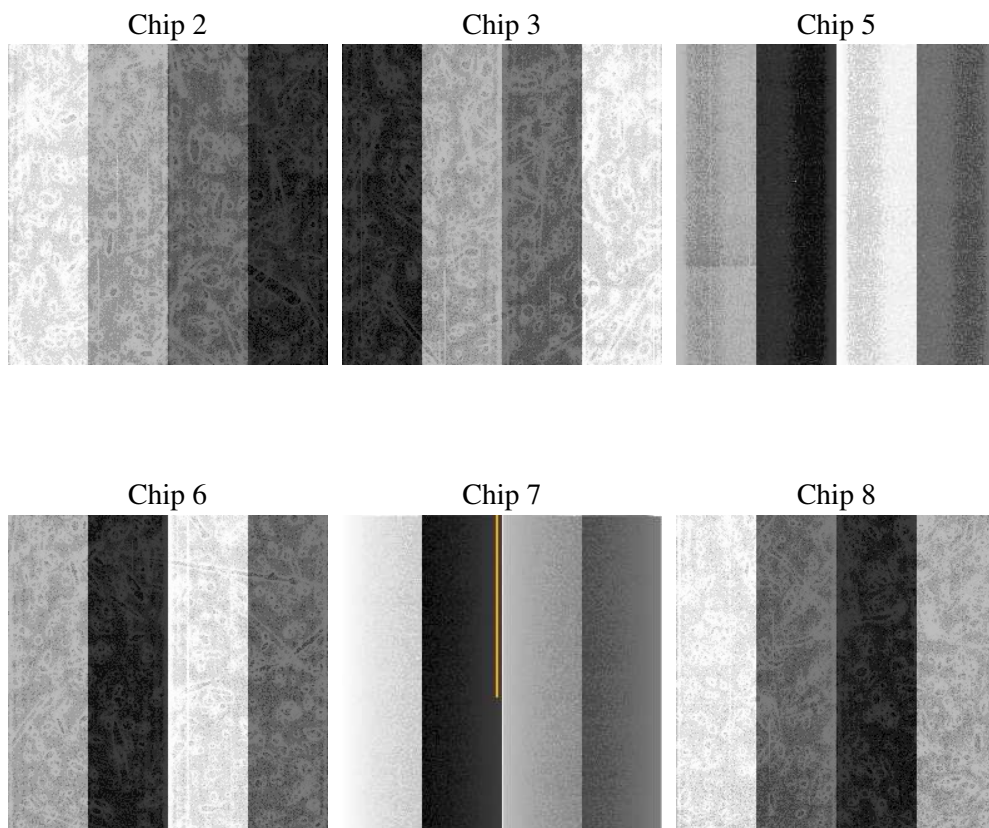
2 OBI

2.1 OBI

2.1.1 Images



2.1.2 Bias



2.1.3 Parameters

obi_num	0
ascdsver	7.6.10
caldbver	3.4.0
date	2007-06-09T19:52:54
revision	2

sched_exp_time	9000.000000
ontime	9190.4000085592
ontime2	9190.4000085592
ontime3	9190.4000085592
ontime5	9190.4000085592
ontime6	9190.4000085592
ontime7	9190.4000085592
ontime8	9190.4000085592
l1events	398217

2.1.4 Events

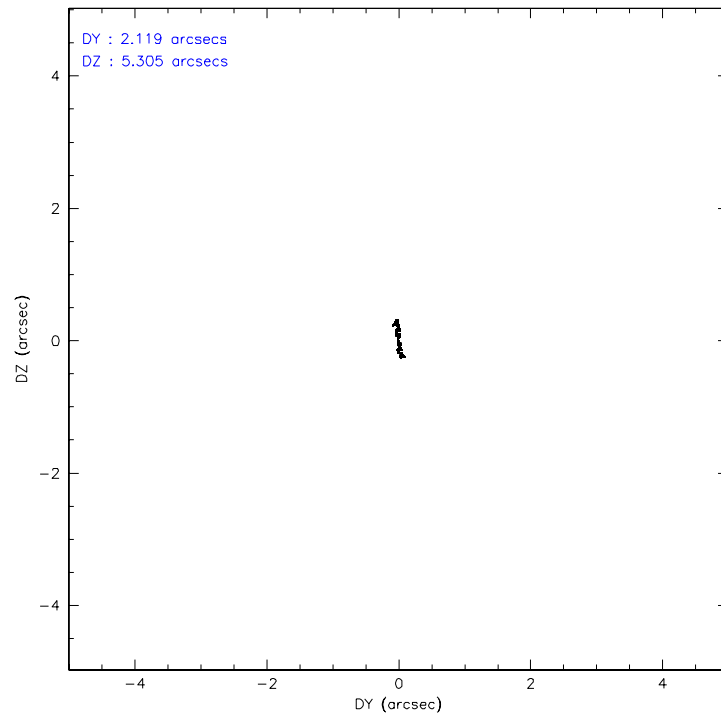
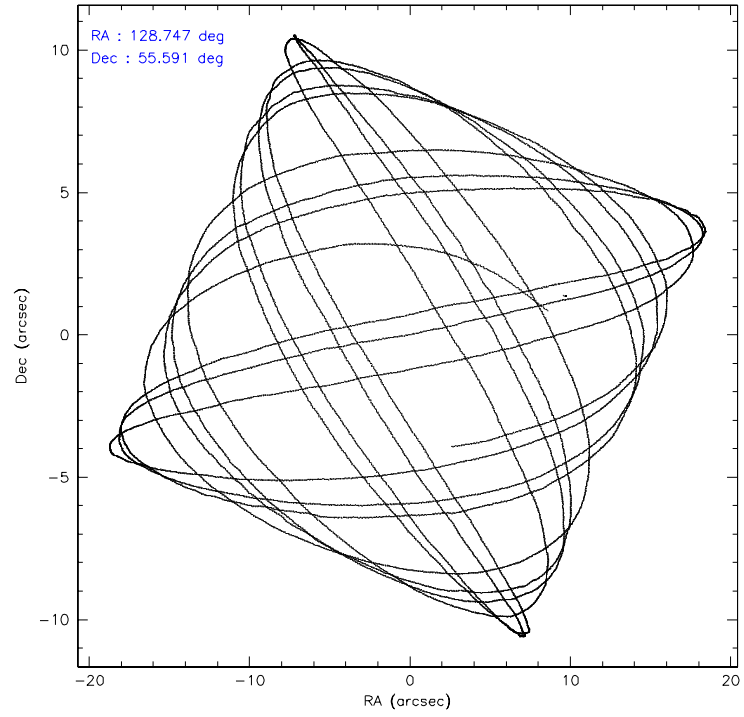
	ccd 2	ccd 3	ccd 5	ccd 6	ccd 7	ccd 8
level 1 events	56569	53985	82008	55970	80285	69400
rejected events	50547	48117	42061	49781	40258	56157
rejected %	89%	89%	51%	88%	50%	80%

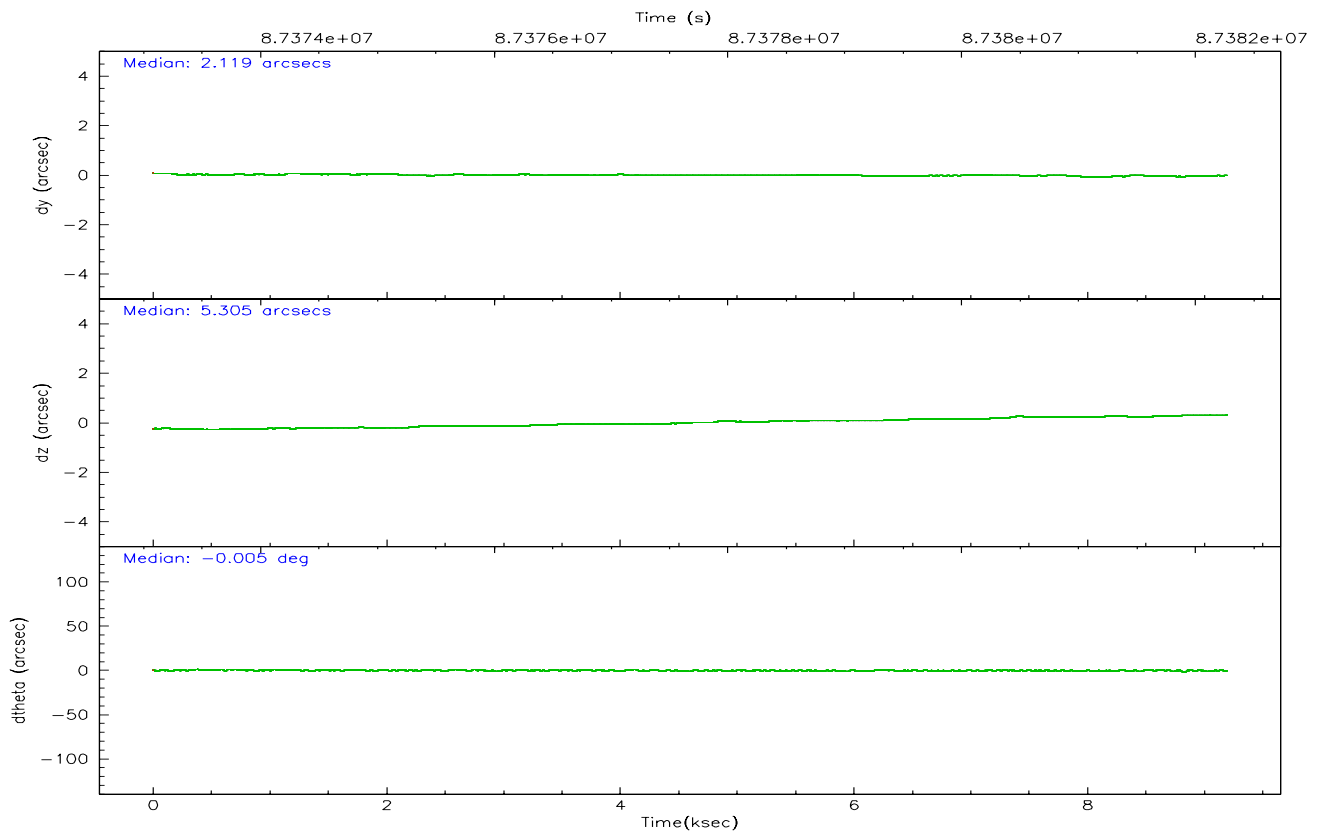
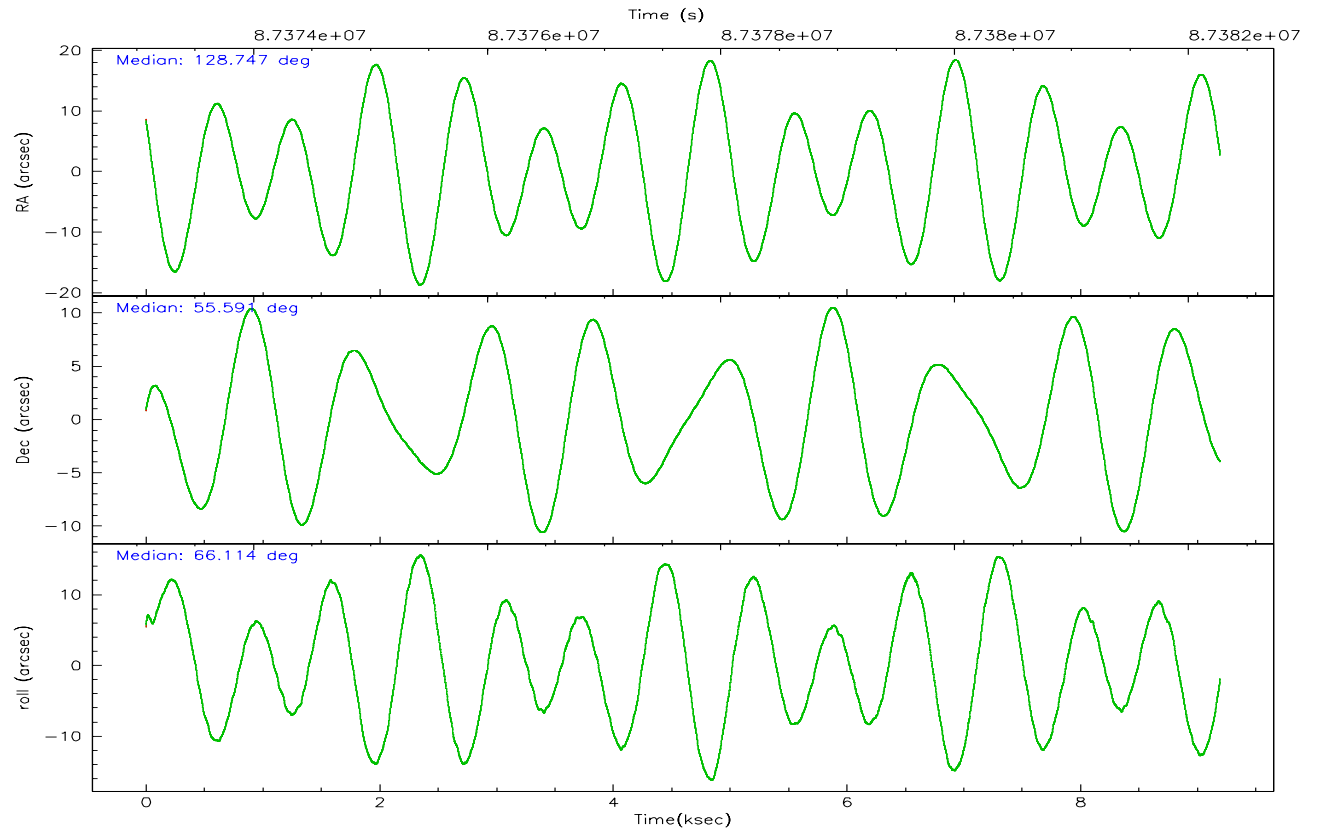
	ccd 2	ccd 3	ccd 5	ccd 6	ccd 7	ccd 8
grade 0 events	2675	2569	6758	2582	6111	4038
	4%	4%	8%	4%	7%	5%
grade 1 events	29	25	76	15	68	42
	0%	0%	0%	0%	0%	0%
grade 2 events	1256	1060	11328	1242	8427	2874
	2%	1%	13%	2%	10%	4%
grade 3 events	589	592	1768	636	3979	1369
	1%	1%	2%	1%	4%	1%
grade 4 events	537	622	1655	613	3854	1342
	0%	1%	2%	1%	4%	1%
grade 5 events	1746	1934	5985	2243	6523	2803
	3%	3%	7%	4%	8%	4%
grade 6 events	1012	1065	18795	1171	17980	3685
	1%	1%	22%	2%	22%	5%
grade 7 events	48725	46118	35643	47468	33343	53247
	86%	85%	43%	84%	41%	76%

2.2 Compared Parameters

Parameter	Planned	Actual	Parameter	Planned	Actual
Instrument	ACIS	ACIS	Obspar format version number	6	6
Detector	ACIS-235678	ACIS-235678	Obspar file type	PREDICTED	ACTUAL
Grating	NONE	NONE	Obspar update status	NONE	UPDATED
Data mode	FAINT	FAINT	Number of optional ACIS chips dropped	0	0
Observation mode	POINTING	POINTING	On-chip summing requested	N	N
Pointing RA	128.752130	128.7466456516549	Subarray requested	NONE	NONE
Pointing Dec	55.563689	55.59087708621129	Alternating exposures requested	N	N
Pointing Roll	65.962245	66.12340112130842	Primary exposure time	0.000000	3.2
SIM focus pos (mm)	-0.684267	-0.6828225247311905			
SIM defocus (mm)	0	0.001444936568705701			
SIM translation stage pos (mm)	-190.132523	-190.1425803651734			
SIM translation stage offset (mm)	0	0.01005778216563158			
Observation start time	87373275.184000	87372160.22272401			
Observation start date	2000-10-08T06:20:11	2000-10-08T06:02:40			
Observation end time	87382275.184000	87383104.148137			
Observation end date	2000-10-08T08:50:11	2000-10-08T09:05:04			
Read mode	TIMED	TIMED			

2.3 Aspect



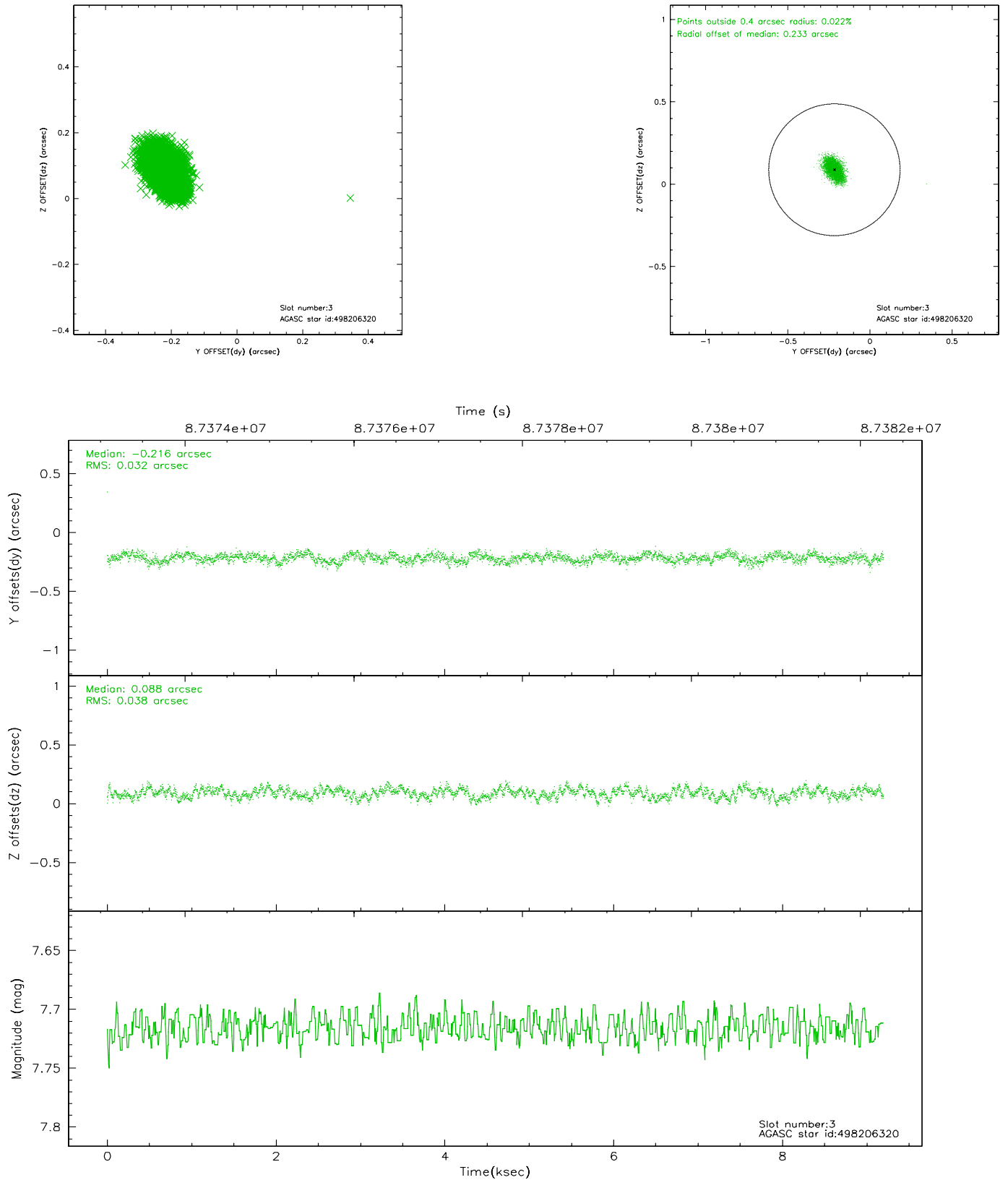


Slot Statistics

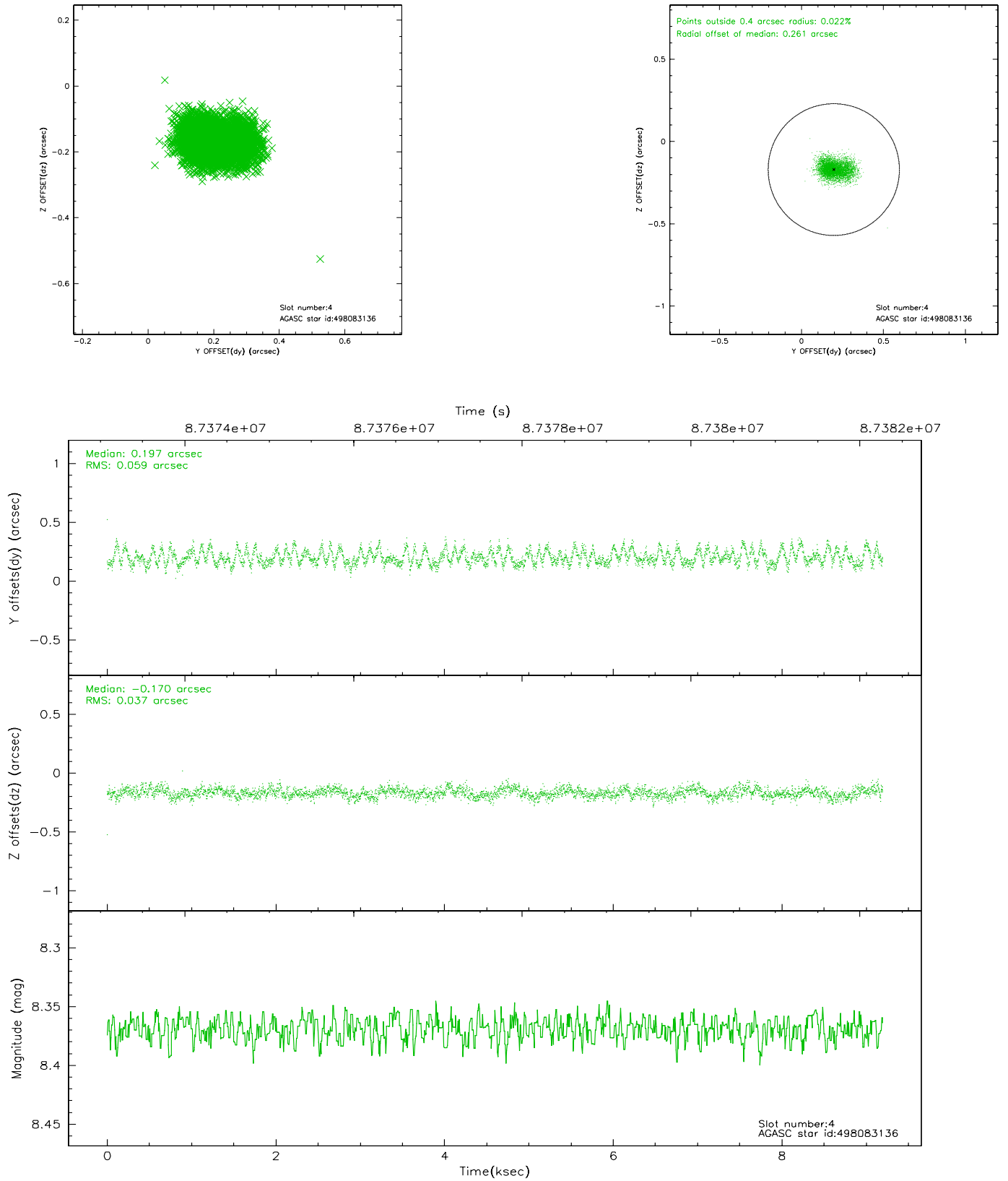
slot	status	id	mag	n_pts	med_dy	med_dz	dr1	dr2	ra	dec	mean_y	mean_z
0	FID	ACIS-S-2	7.11	2244	-0.036	0.016	0.007	0.012	0.000000	0.000000	-754.74	-1726.38
1	FID	ACIS-S-4	7.20	2244	-0.043	0.013	0.005	0.009	0.000000	0.000000	2158.23	181.55
2	FID	ACIS-S-5	7.24	2244	0.047	-0.020	0.007	0.011	0.000000	0.000000	-1806.77	175.79
3	GUIDE	498206320	7.72	4485	-0.216	0.088	0.053	0.086	129.264284	55.839214	1331.54	-539.06
4	GUIDE	498083136	8.37	4484	0.197	-0.170	0.074	0.121	127.360204	55.285568	-2050.02	2209.81
5	GUIDE	498206776	9.19	4486	-0.096	0.164	0.103	0.165	130.185581	55.785525	1938.99	-2310.84
6	GUIDE	498207064	9.49	4482	0.023	0.061	0.078	0.130	129.027738	55.651865	520.07	-381.32
7	GUIDE	498081512	9.68	4482	0.086	-0.141	0.111	0.179	127.740416	55.501187	-1031.57	1798.53

2.4 Star Slots

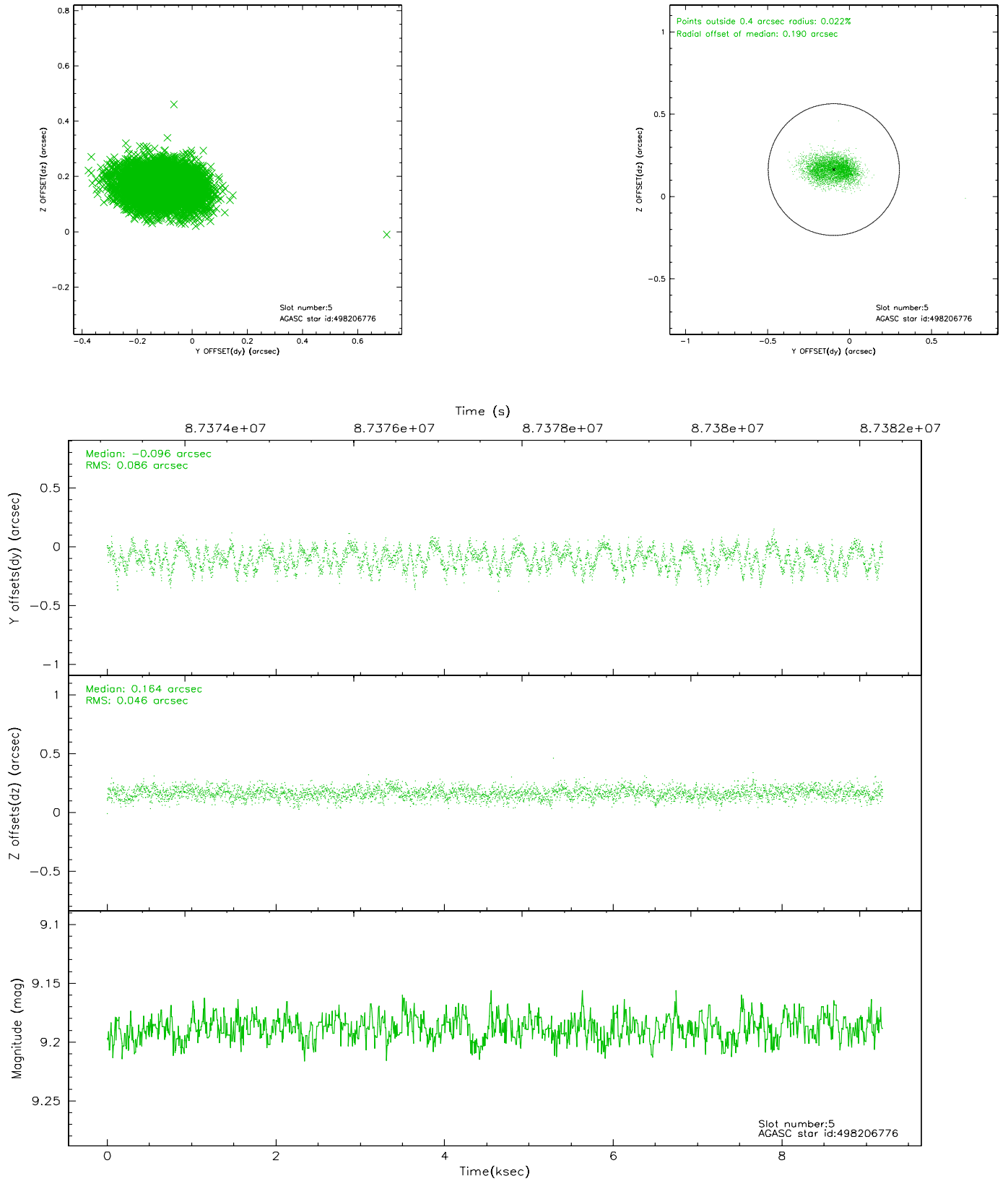
2.4.1 Slot 3



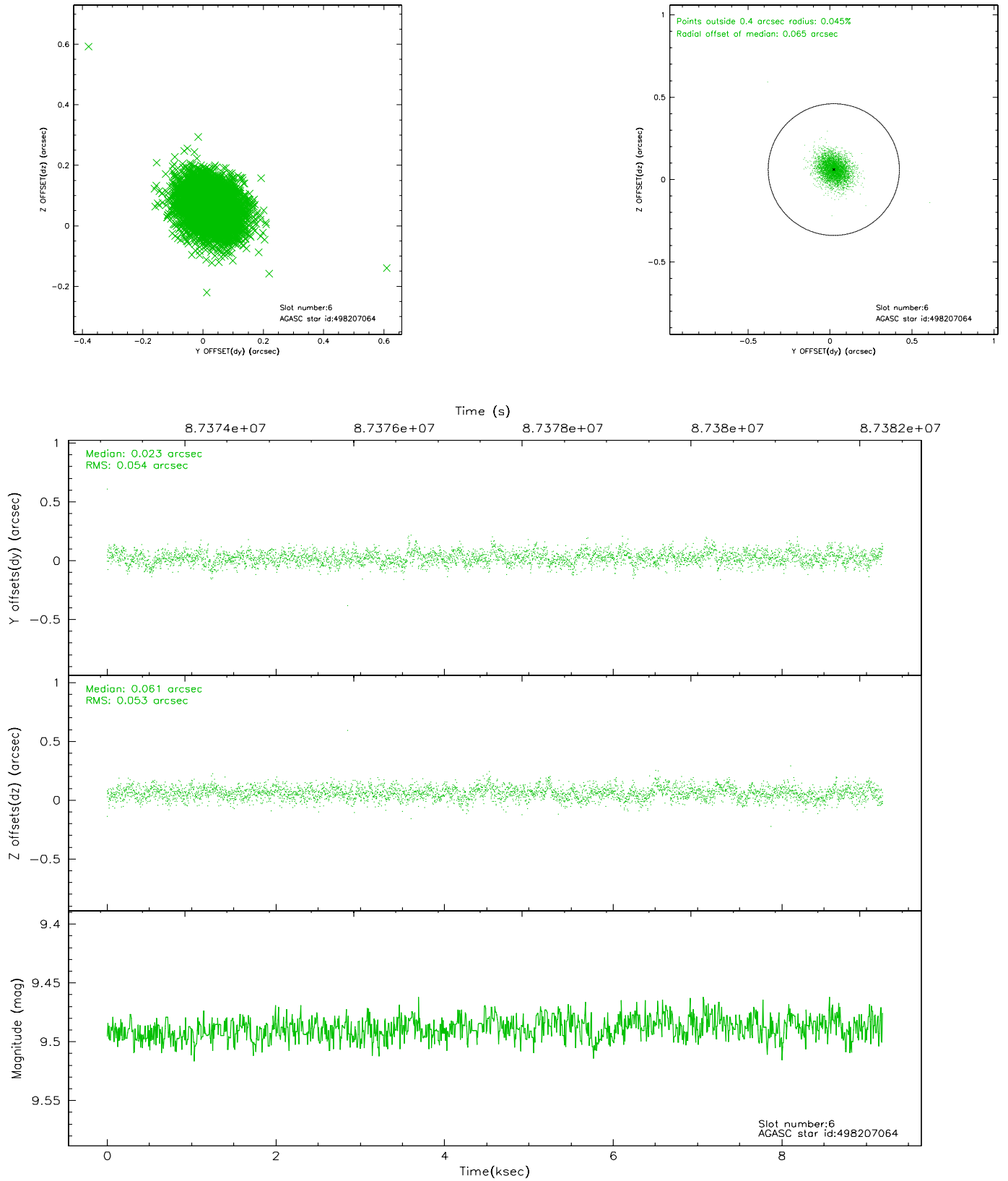
2.4.2 Slot 4



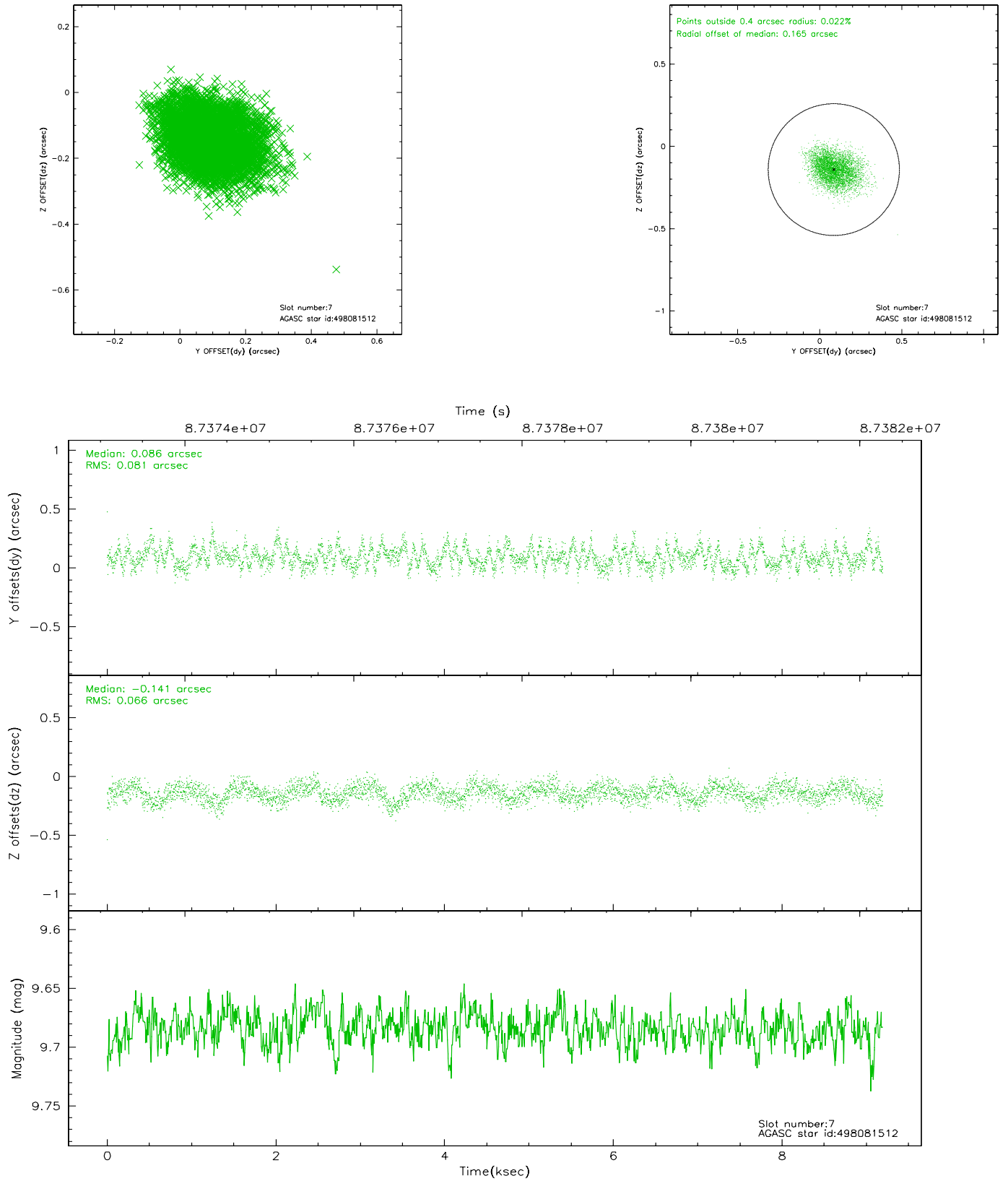
2.4.3 Slot 5



2.4.4 Slot 6

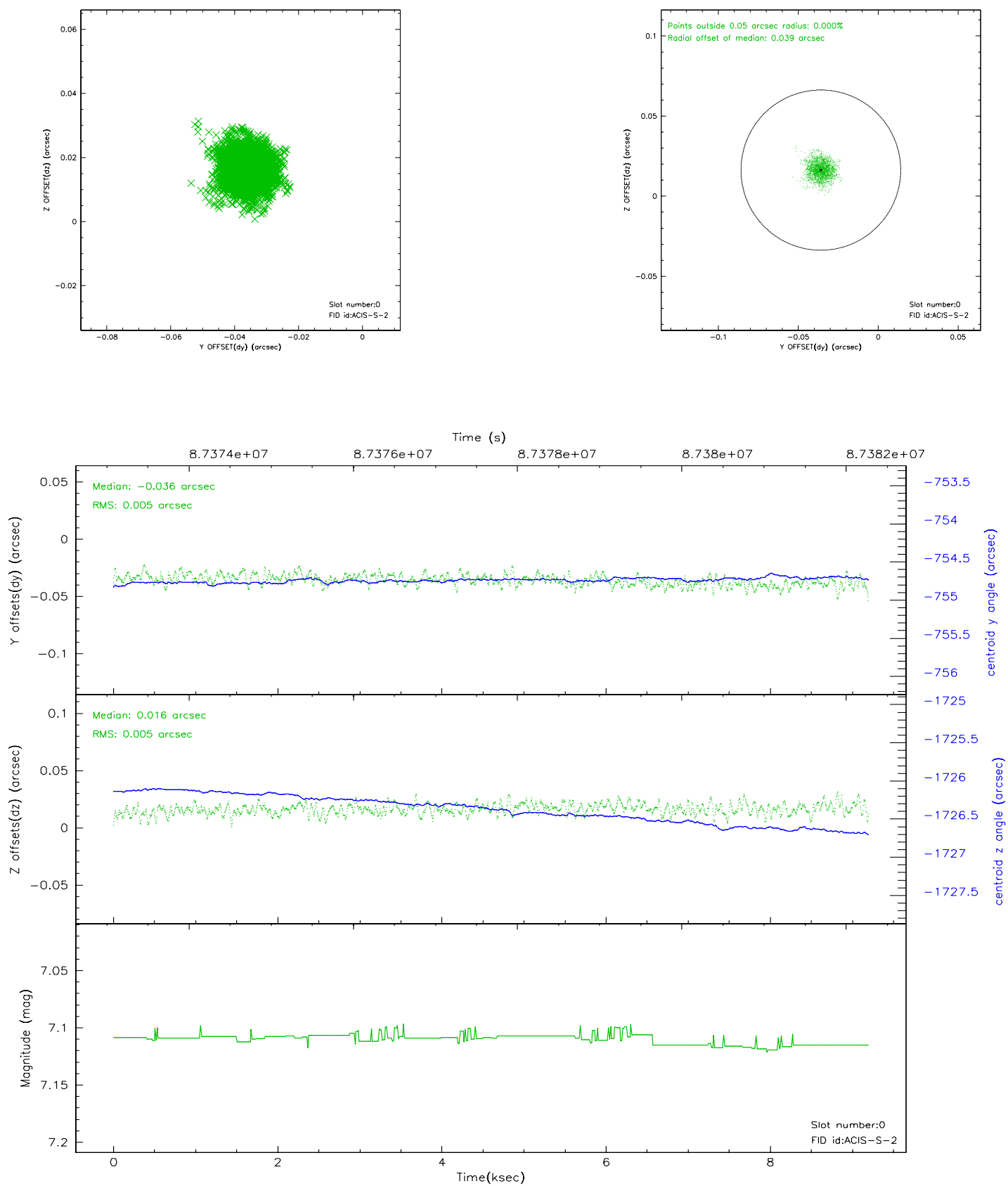


2.4.5 Slot 7

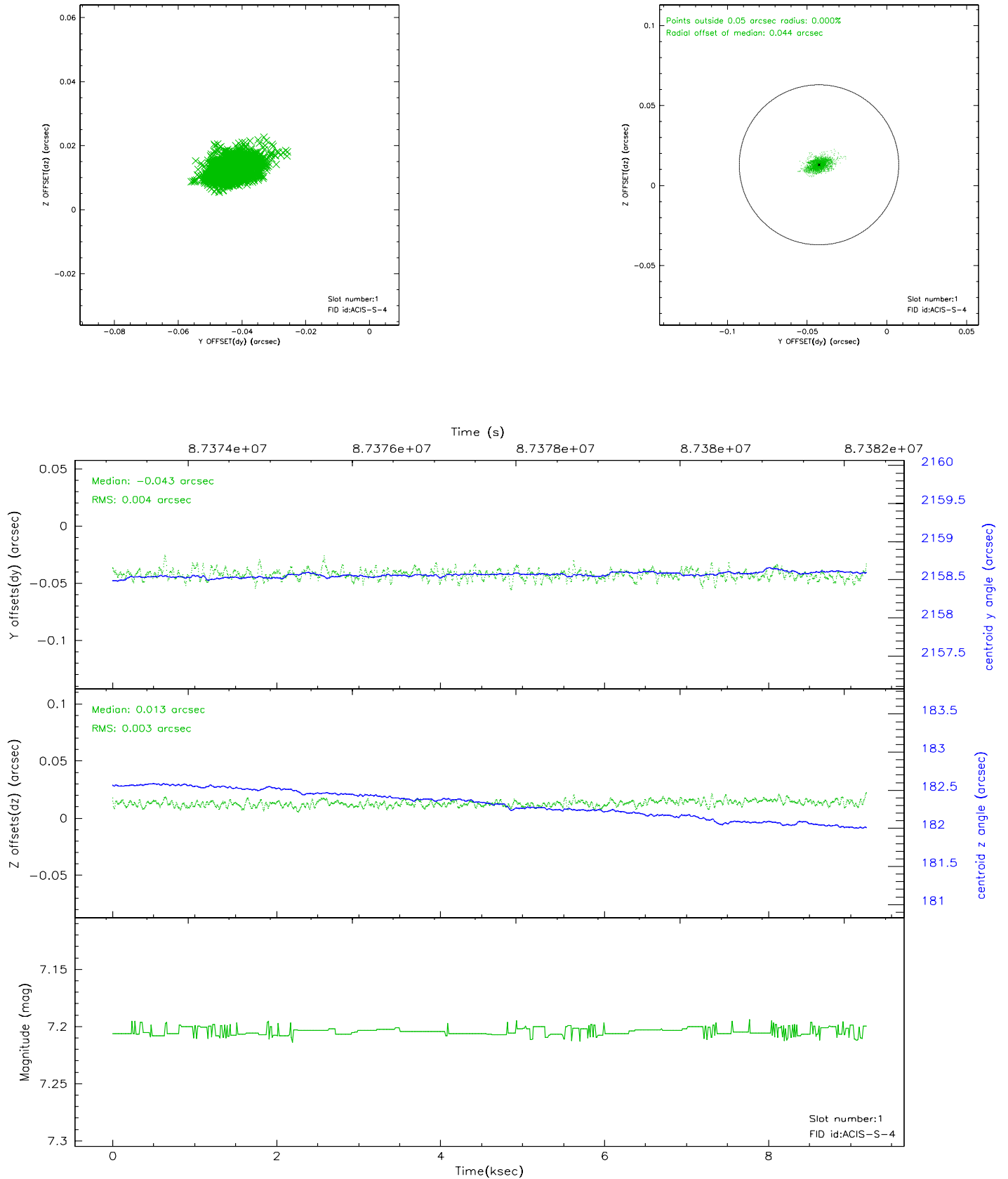


2.5 FID Slots

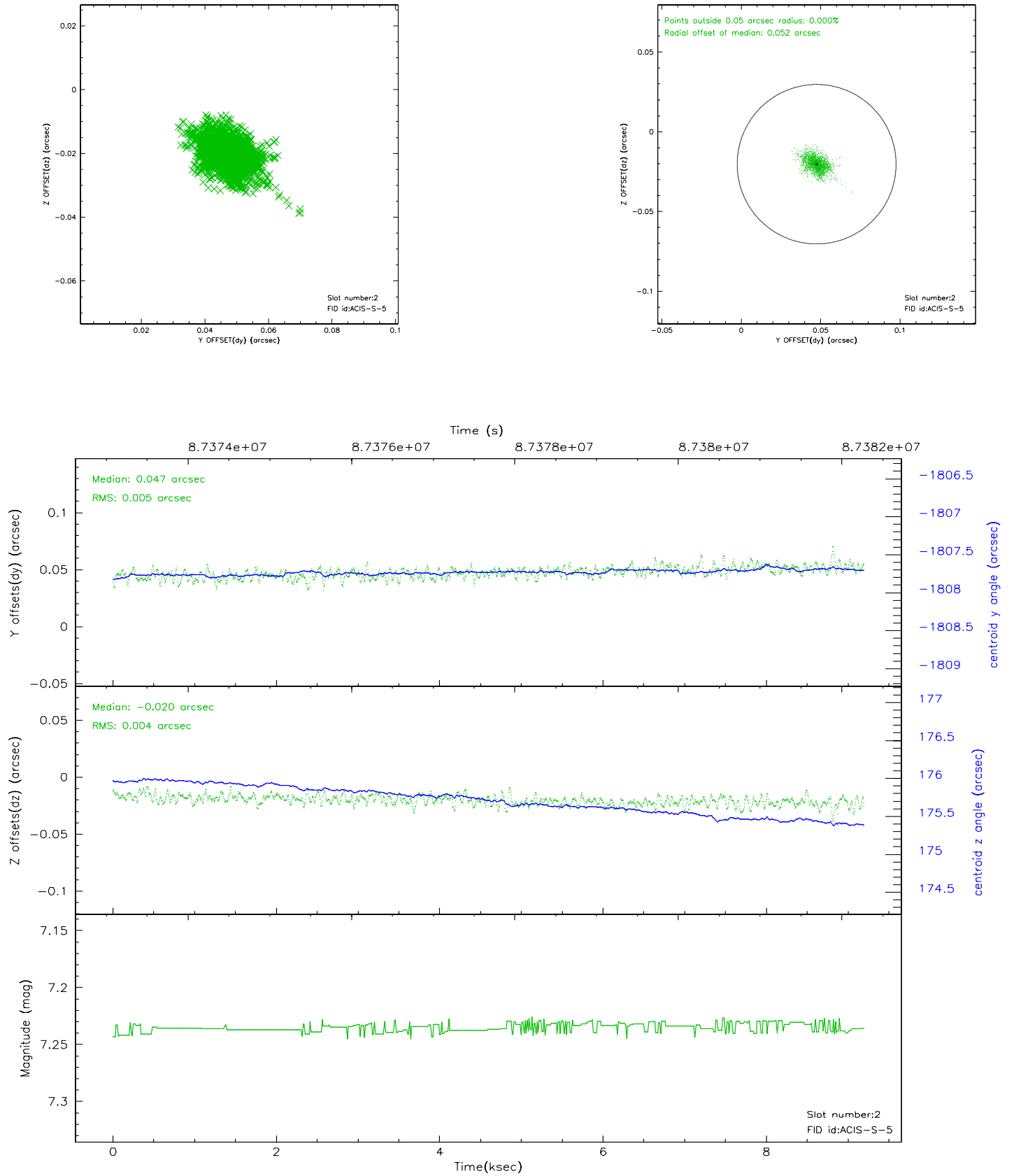
2.5.1 Slot 0



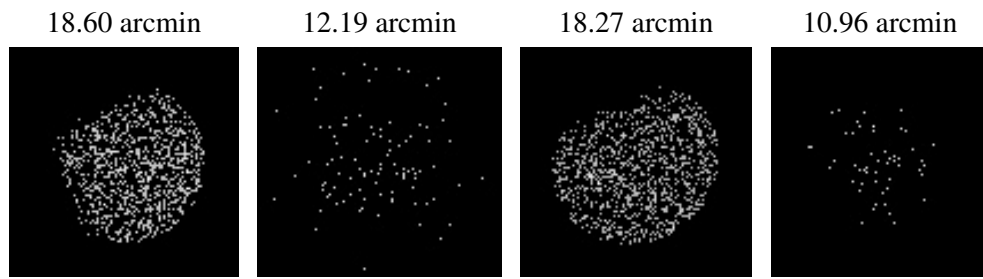
2.5.2 Slot 1



2.5.3 Slot 2



3 Point Sources



A Summary

A.1 Status

V&V Scientist	Jen Lauer
V&V Date (YYYY-MM-DD)	2007.06.11
V&V Edition	1
V&V Disposition and Status	OK
V&V Charge Time	9.19

A.2 Comments