

# V&V Reference Report

## L2 ASCDS Version : 7.6.9

Observation 2454 - L2 Version 001  
Chandra X-Ray Center

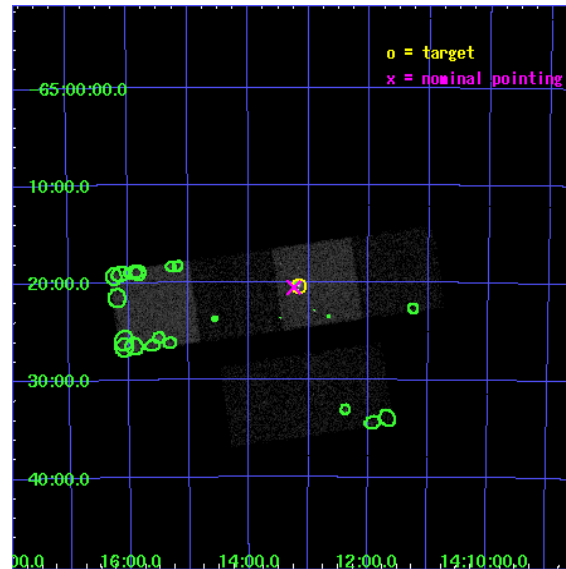
L2 Processing Date : Nov 29 2006

## Contents

<b>1</b>	<b>Front</b>	<b>2</b>
<b>2</b>	<b>OBI</b>	<b>3</b>
2.1	OBI . . . . .	3
2.1.1	Images . . . . .	3
2.1.2	Bias . . . . .	3
2.1.3	Parameters . . . . .	4
2.1.4	Events . . . . .	4
2.2	Compared Parameters . . . . .	5
2.3	Aspect . . . . .	6
2.4	Star Slots . . . . .	9
2.4.1	Slot 3 . . . . .	9
2.4.2	Slot 4 . . . . .	10
2.4.3	Slot 5 . . . . .	11
2.4.4	Slot 6 . . . . .	12
2.4.5	Slot 7 . . . . .	13
2.5	FID Slots . . . . .	14
2.5.1	Slot 0 . . . . .	14
2.5.2	Slot 1 . . . . .	15
2.5.3	Slot 2 . . . . .	16
<b>3</b>	<b>Point Sources</b>	<b>17</b>
<b>A</b>	<b>Summary</b>	<b>18</b>
A.1	Status . . . . .	18
A.2	Comments . . . . .	18

# 1 Front

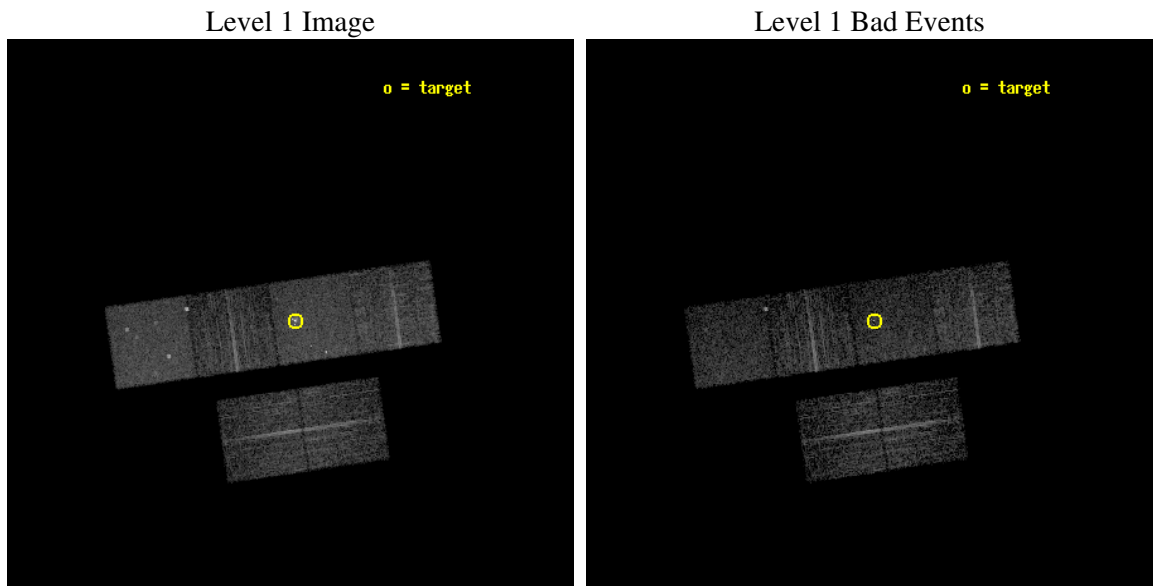
seq_num	700393
obs_id	2454
title	THE ORIGIN OF THE DRAMATIC FLUX AND SPECTRAL VARIABILITY IN THE CIRCINUS GALAXY
observer	Professor Giorgio Matt
object	CIRCINUS GALAXY
dtcycle	0
cycle	P
ra_targ	213.28875
dec_targ	-65.339167
ra_nom	213.31114683521
dec_nom	-65.342194955824
roll_nom	351.86700805551
revision	2
ontime	4454.4000041485
livetime	4397.9957091783
ontime2	4454.4000041485
ontime3	4454.4000041485
ontime5	4454.4000041485
ontime6	4454.4000041485
ontime7	4454.4000041485
ontime8	4451.1590438932
l2events	45047



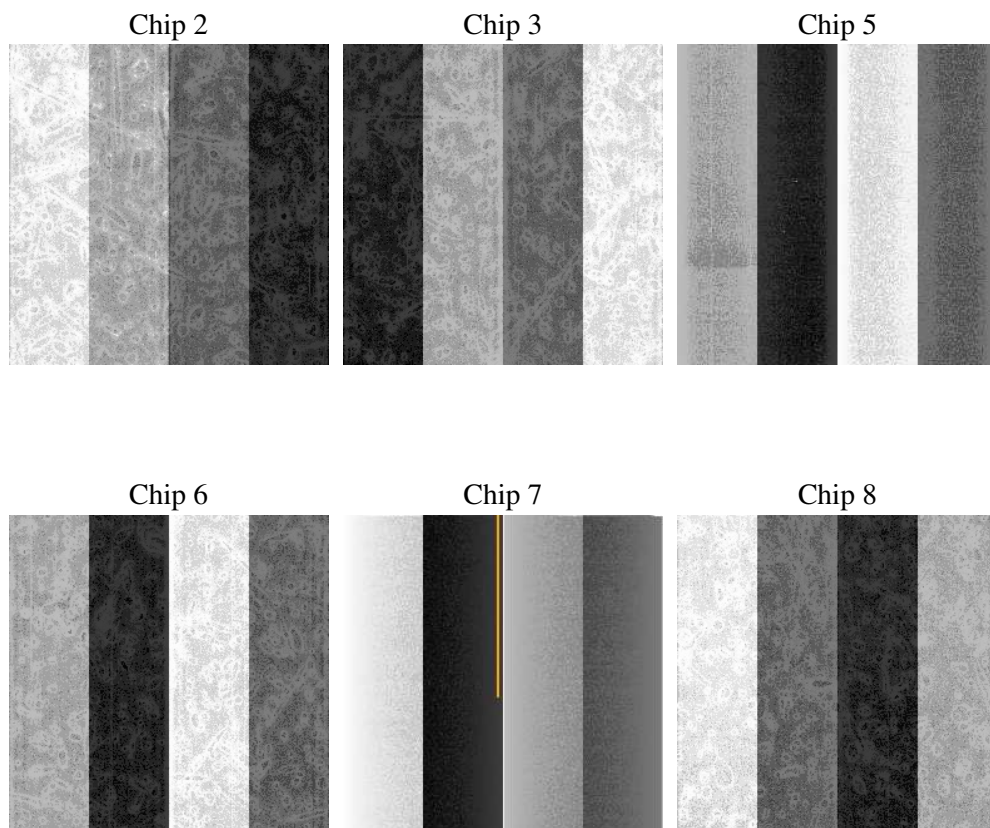
## 2 OBI

### 2.1 OBI

#### 2.1.1 Images



#### 2.1.2 Bias



### 2.1.3 Parameters

obi_num	1
ascdsver	7.6.9
caldsver	3.2.4
date	2006-11-29T12:57:17
revision	2

sched_exp_time	4700.000000
ontime	4459.6137529612
ontime2	4459.6137529612
ontime3	4459.6137529612
ontime5	4459.6137529612
ontime6	4459.6137529612
ontime7	4459.6137529612
ontime8	4456.372693032
l1events	202116

### 2.1.4 Events

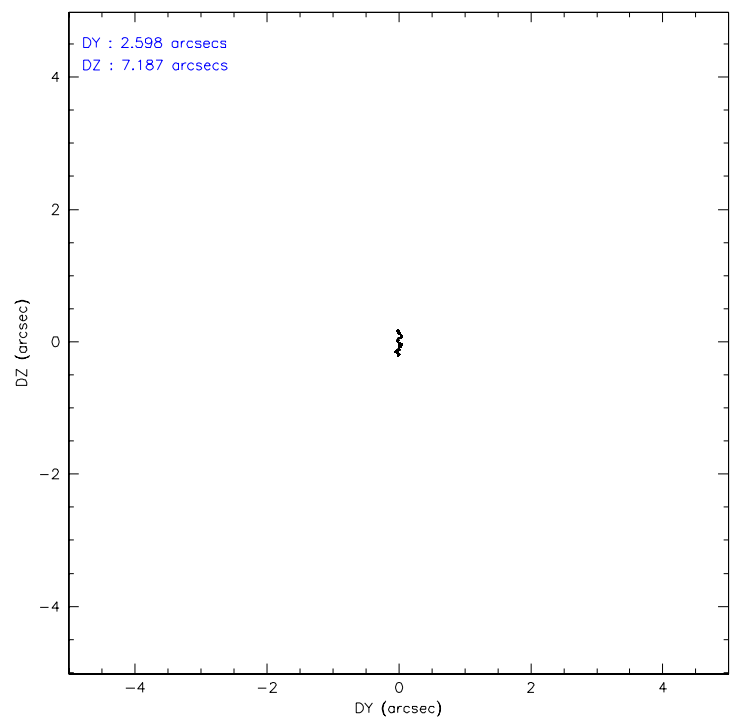
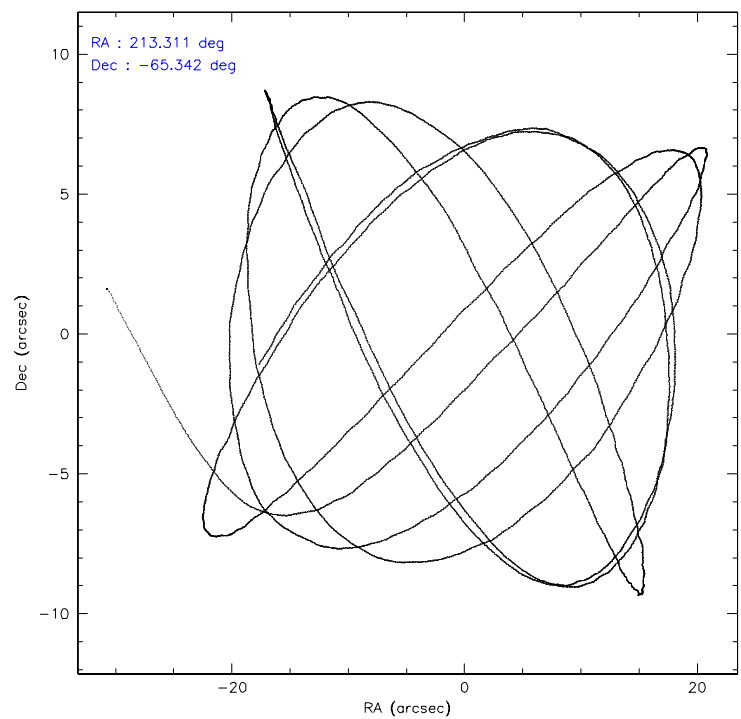
	ccd 2	ccd 3	ccd 5	ccd 6	ccd 7	ccd 8
level 1 events	28138	27951	40180	29146	40009	36692
rejected events	24862	24714	21897	25669	22305	30255
rejected %	88%	88%	54%	88%	55%	82%

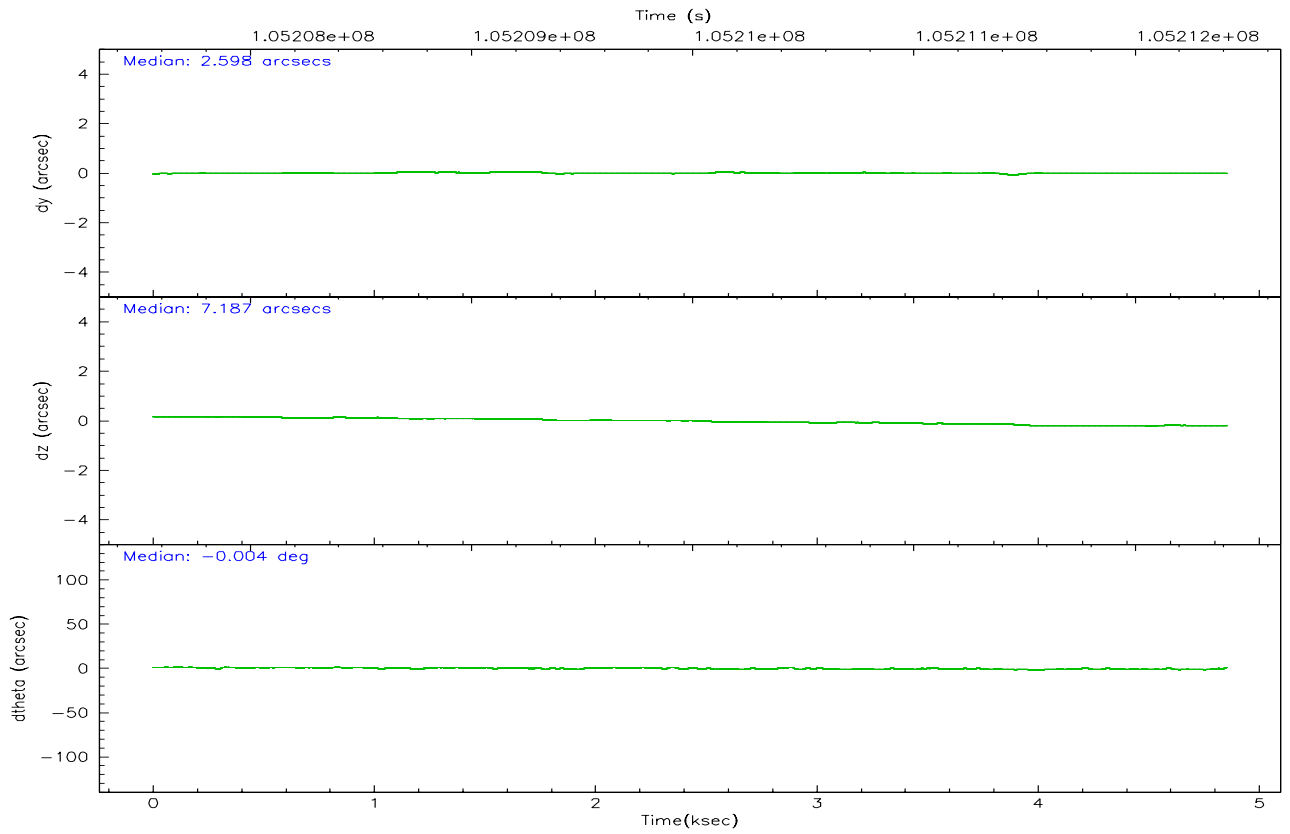
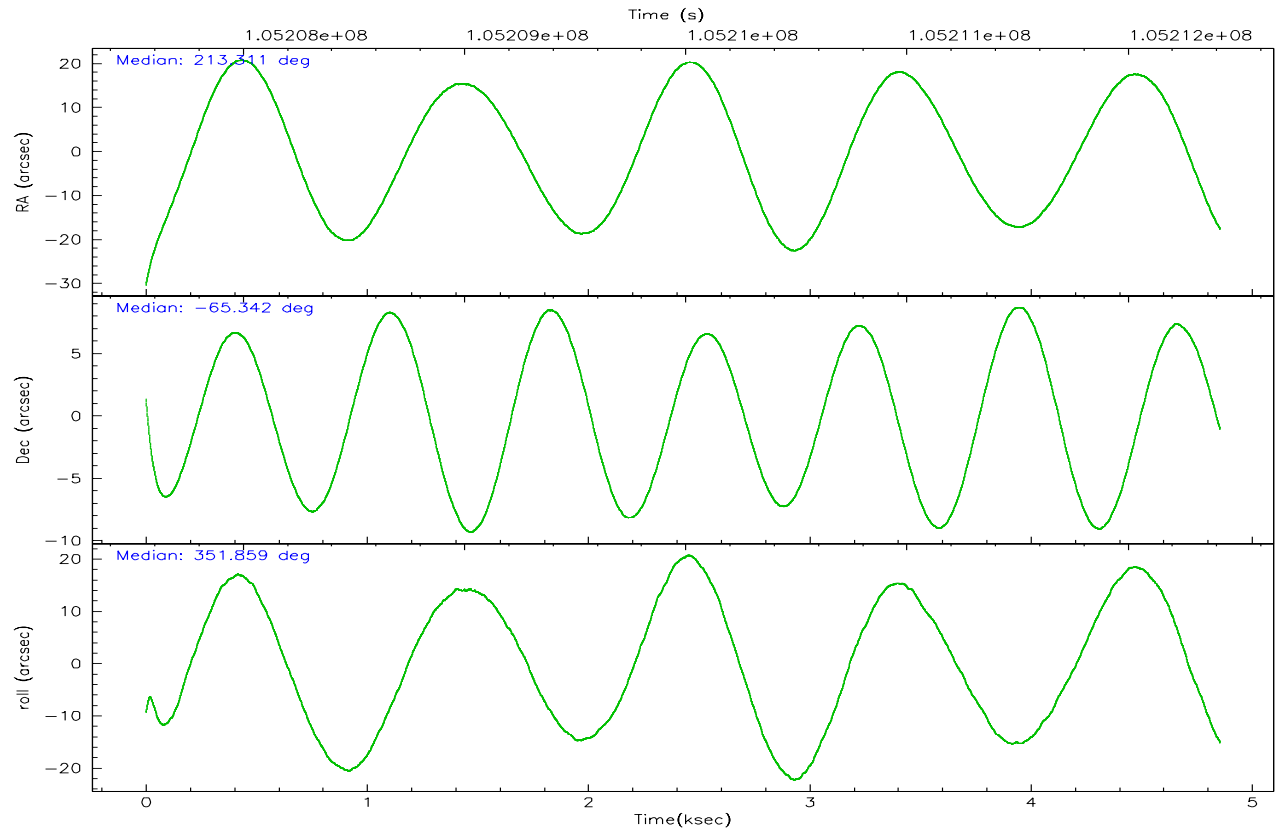
	ccd 2	ccd 3	ccd 5	ccd 6	ccd 7	ccd 8
grade 0 events	1441	1471	1905	1525	1793	2198
	5%	5%	4%	5%	4%	5%
grade 1 events	12	10	223	15	36	23
	0%	0%	0%	0%	0%	0%
grade 2 events	693	622	5419	685	4416	1353
	2%	2%	13%	2%	11%	3%
grade 3 events	272	292	374	329	1211	702
	0%	1%	0%	1%	3%	1%
grade 4 events	300	289	429	331	1216	638
	1%	1%	1%	1%	3%	1%
grade 5 events	961	1024	2155	1113	2513	1416
	3%	3%	5%	3%	6%	3%
grade 6 events	575	568	10186	616	9110	1549
	2%	2%	25%	2%	22%	4%
grade 7 events	23884	23675	19489	24532	19714	28813
	84%	84%	48%	84%	49%	78%

## 2.2 Compared Parameters

Parameter	Planned	Actual	Parameter	Planned	Actual
Instrument	ACIS	ACIS	Obspar format version number	6	6
Detector	ACIS-235678	ACIS-235678	Obspar file type	PREDICTED	ACTUAL
Grating	NONE	NONE	Obspar update status	NONE	UPDATED
Observation mode	POINTING	POINTING	Number of optional ACIS chips dropped	0	0
Pointing RA	213.250500	213.3111468352133	On-chip summing requested	N	N
Pointing Dec	-65.352678	-65.34219495582352	Subarray requested	NONE	NONE
Pointing Roll	351.655214	351.8670080555095	Alternating exposures requested	N	N
SIM focus pos (mm)	-0.684267	-0.6828225247311905	Primary exposure time	0.000000	3.2
SIM defocus (mm)	0	0.001444936568705701			
SIM translation stage pos (mm)	-190.132523	-190.1400660498719			
SIM translation stage offset (mm)	0	0.00754346686406393			
Observation start time	105207714.184000	105206632.00709			
Observation start date	2001-05-02T16:20:50	2001-05-02T16:03:52			
Observation end time	105212414.184000	105213411.35735			
Observation end date	2001-05-02T17:39:10	2001-05-02T17:56:51			
Read mode	TIMED	TIMED			

## 2.3 Aspect





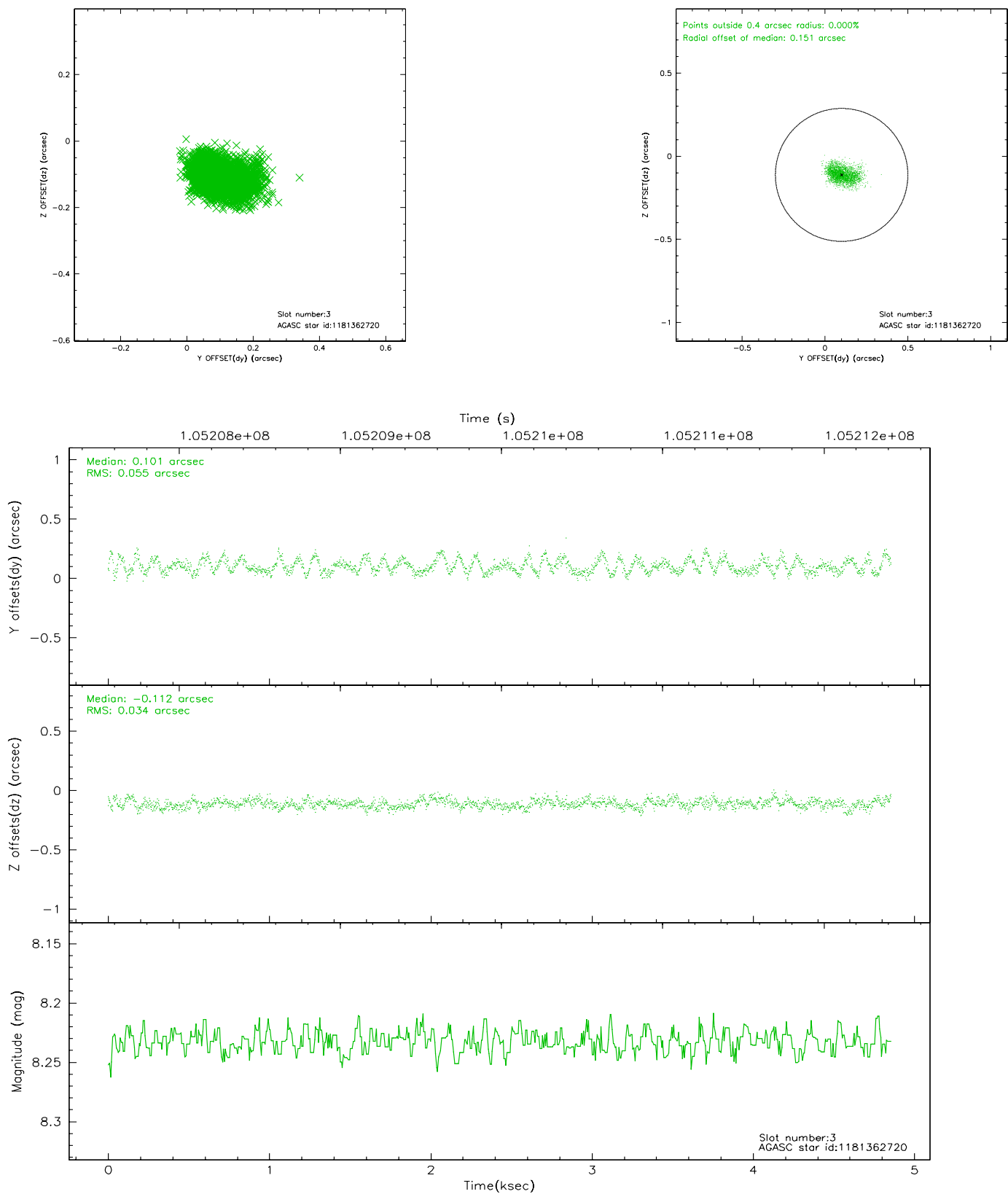
### Slot Statistics

slot	status	id	mag	n_pts	med_dy	med_dz	dr1	dr2	ra	dec	mean_y	mean_z
0	FID	ACIS-S-2	7.12	1185	0.001	0.016	0.008	0.014	0.000000	0.000000	-755.23	-1728.32
1	FID	ACIS-S-4	7.19	1185	-0.087	-0.005	0.006	0.011	0.000000	0.000000	2157.39	178.84
2	FID	ACIS-S-5	7.23	1185	0.054	-0.002	0.008	0.013	0.000000	0.000000	-1806.40	173.95
3	GUIDE	1181362720	8.23	2370	0.101	-0.112	0.069	0.111	212.359703	-64.776136	-1651.44	1845.00
4	GUIDE	1181354960	8.57	2370	-0.283	-0.084	0.070	0.112	212.286192	-65.622482	-1275.23	-1179.70
5	GUIDE	1181363304	8.76	2368	0.115	-0.046	0.060	0.099	212.741873	-65.071033	-910.21	887.01
6	GUIDE	1181888328	9.13	2370	0.005	0.125	0.096	0.155	213.100875	-66.006078	125.30	-2359.31
7	GUIDE	1181492072	9.23	2368	0.054	0.122	0.073	0.117	214.479575	-65.592809	1937.81	-608.71

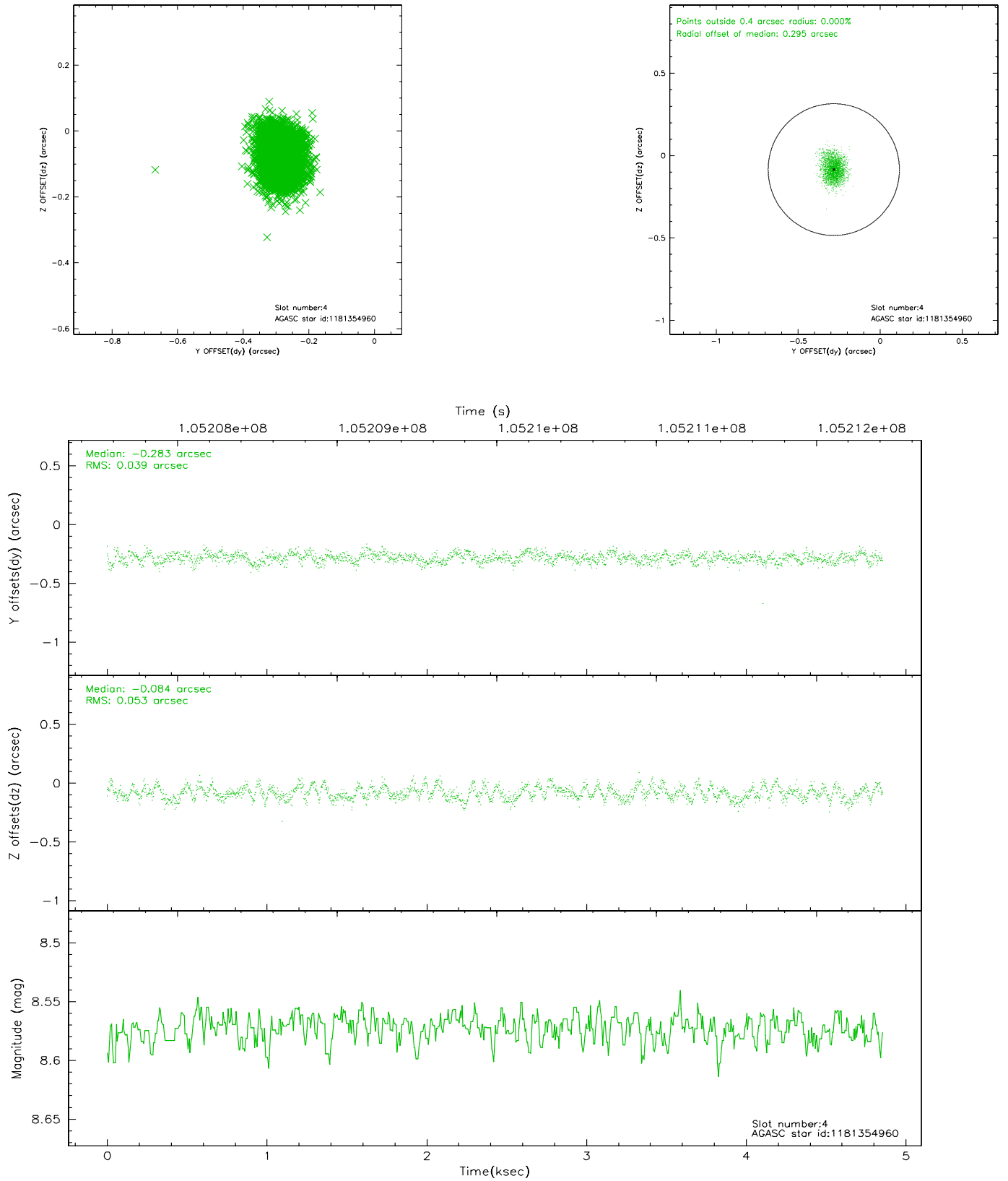


## 2.4 Star Slots

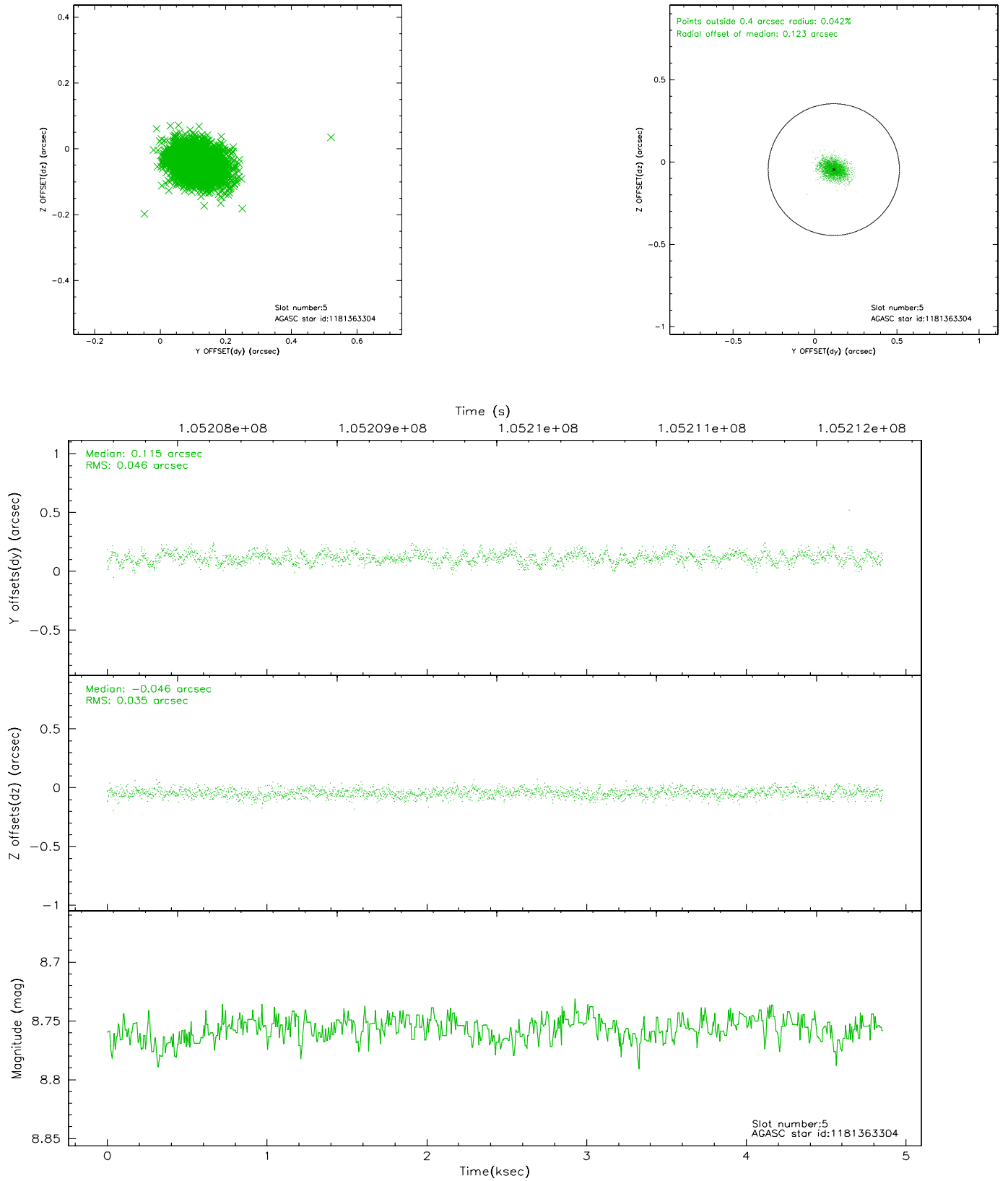
### 2.4.1 Slot 3



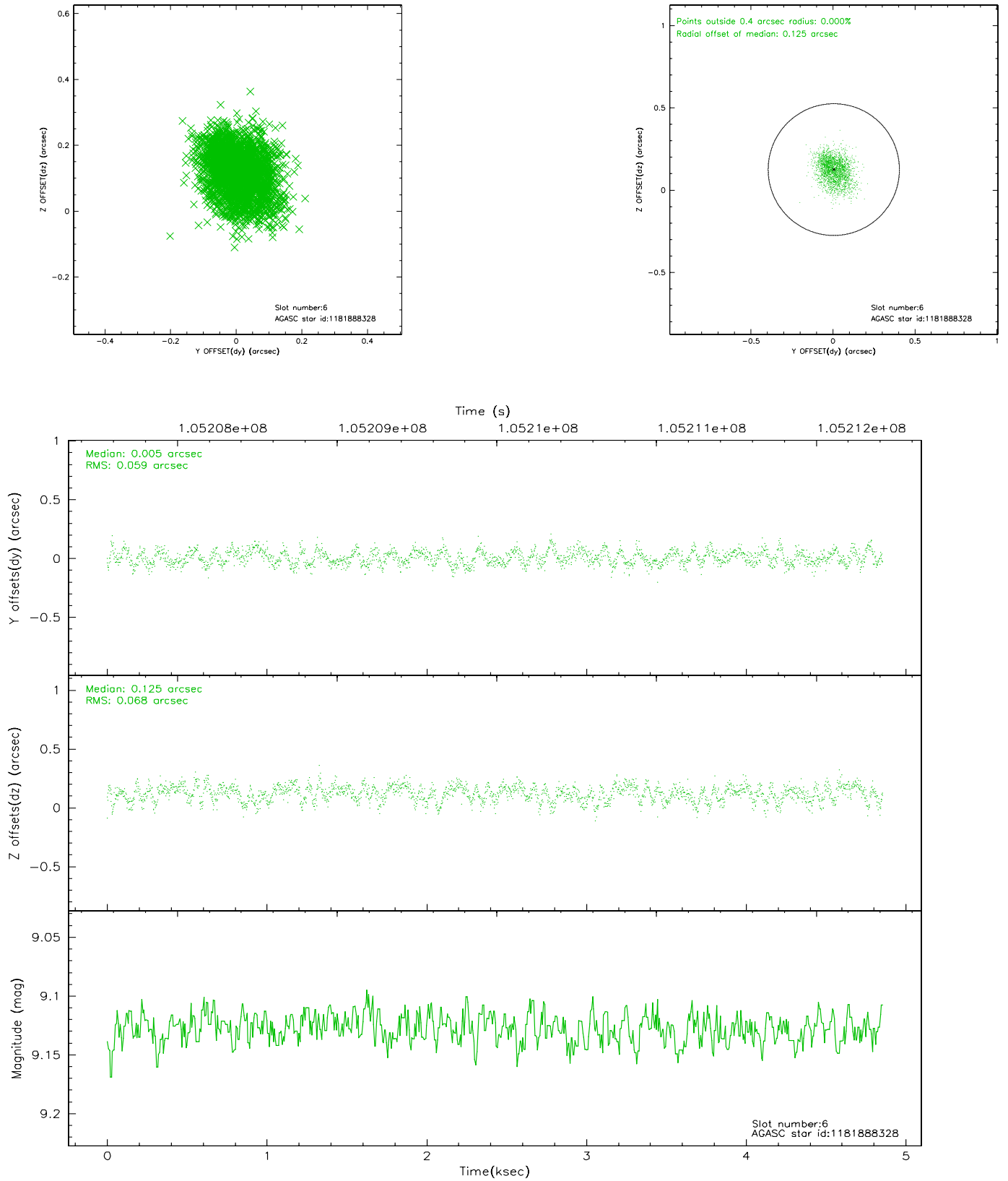
## 2.4.2 Slot 4



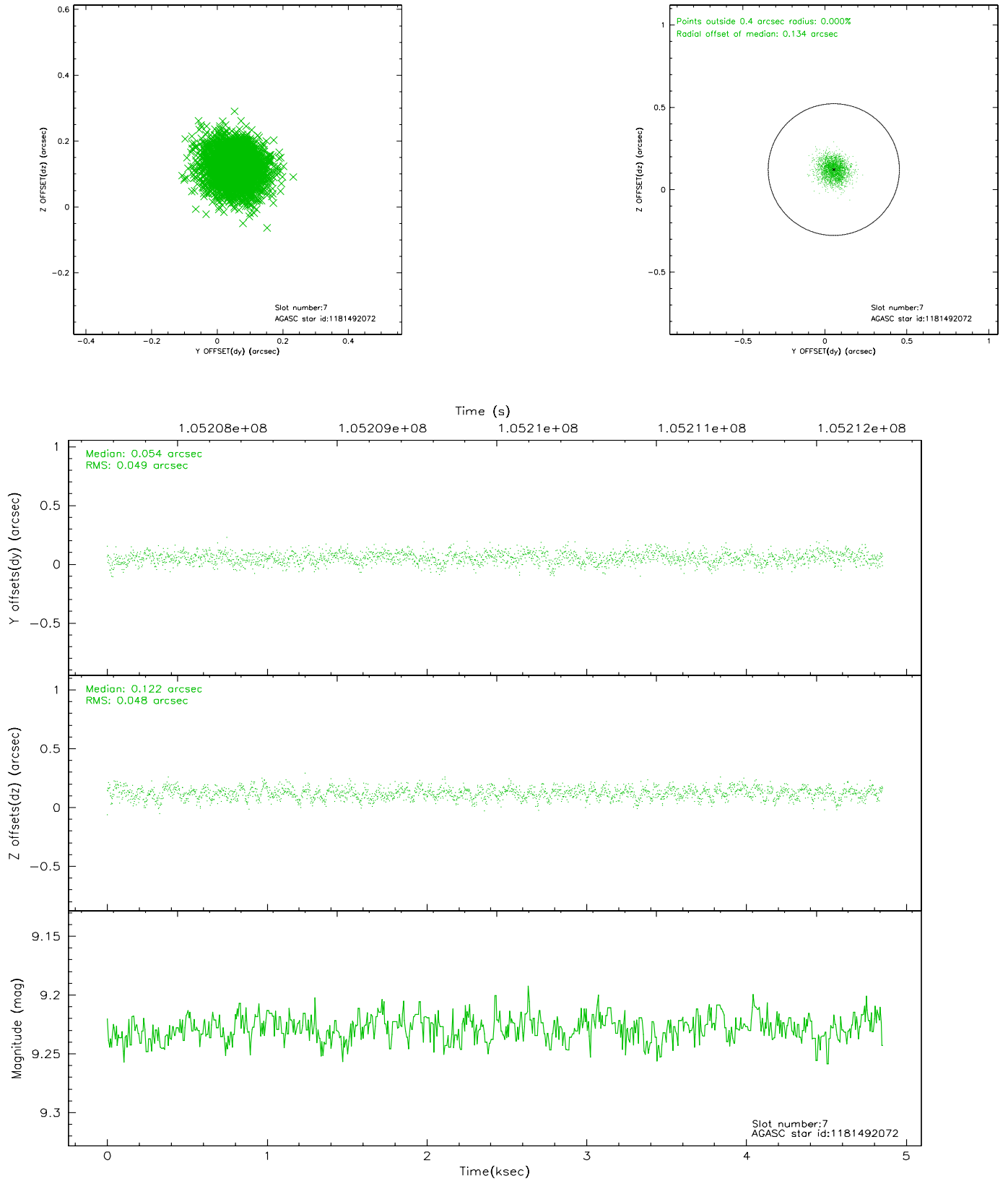
### 2.4.3 Slot 5



## 2.4.4 Slot 6

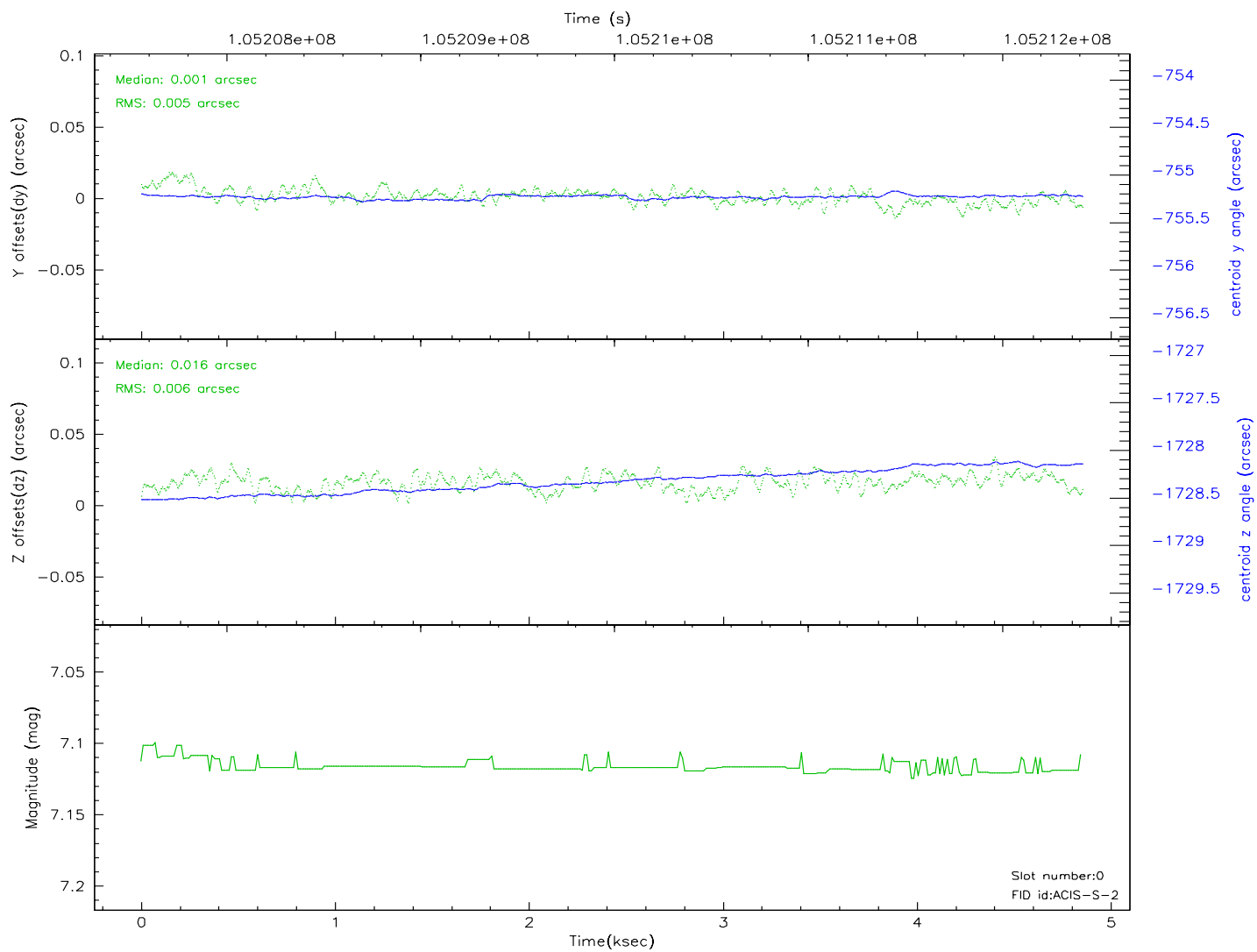
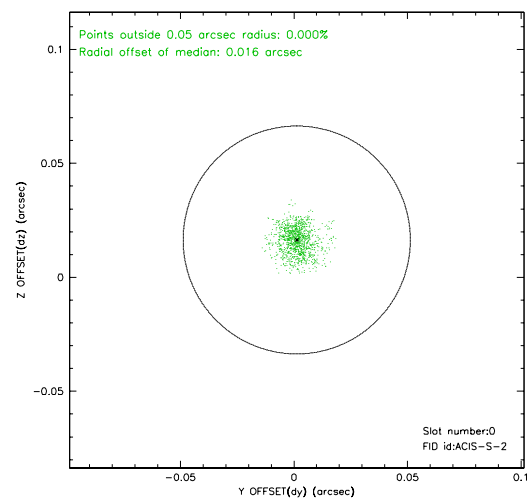
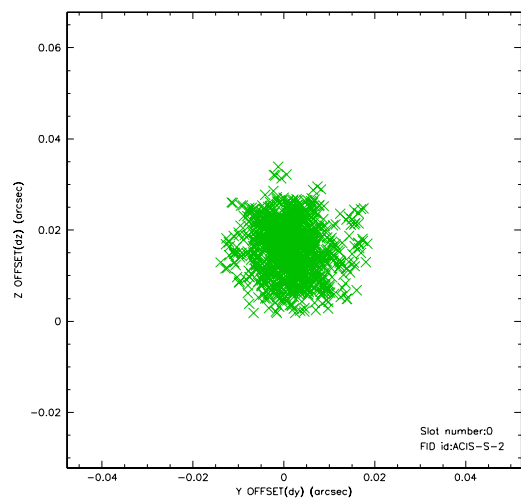


## 2.4.5 Slot 7

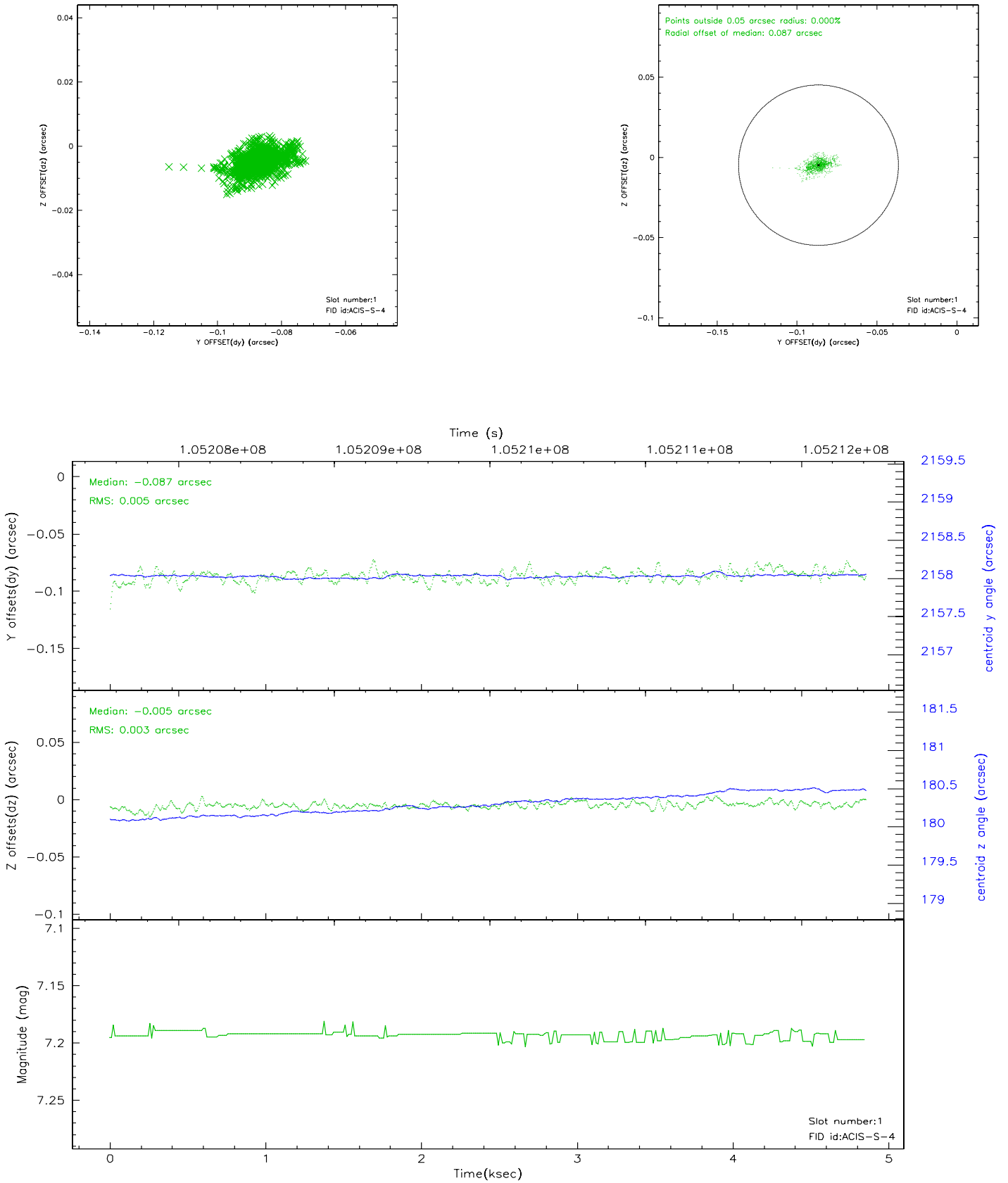


## 2.5 FID Slots

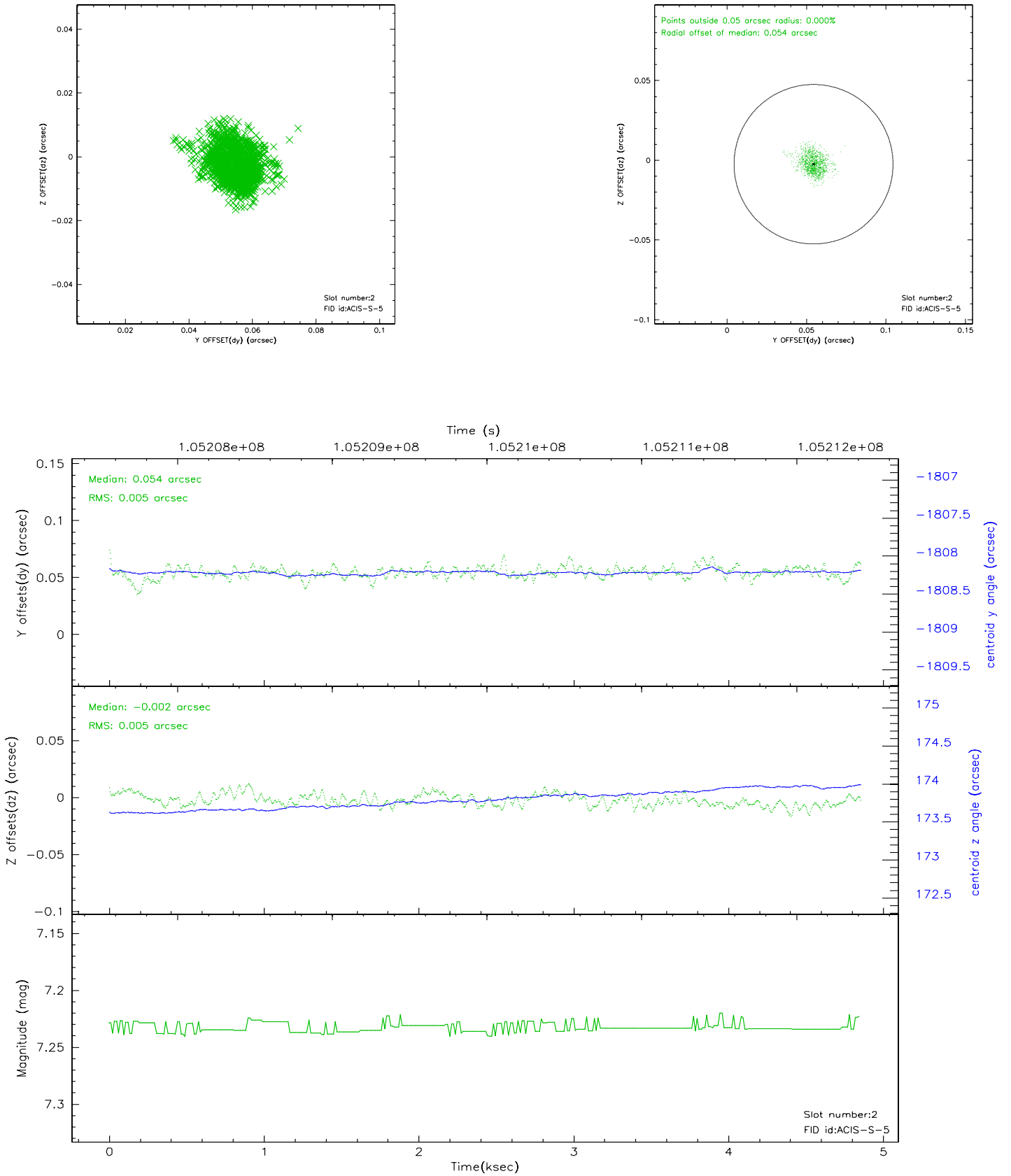
### 2.5.1 Slot 0



## 2.5.2 Slot 1

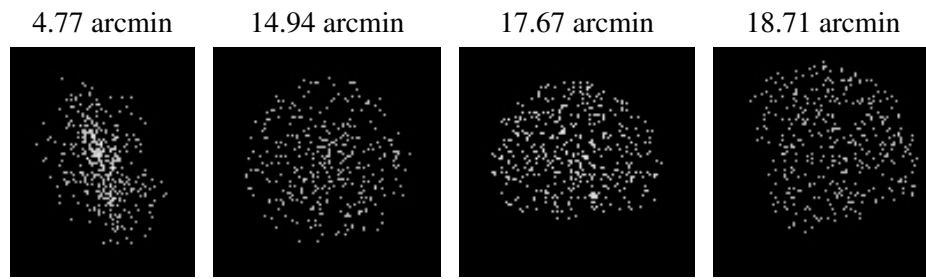


### 2.5.3 Slot 2





### 3 Point Sources



## A Summary

### A.1 Status

V&V Scientist	Beth Sundheim
V&V Date (YYYY-MM-DD)	2006.11.29
V&V Edition	1
V&V Disposition and Status	OK
V&V Charge Time	4.5

### A.2 Comments