

V&V Reference Report

L2 ASCDS Version : 7.6.9

Observation 2180 - L2 Version 001
Chandra X-Ray Center

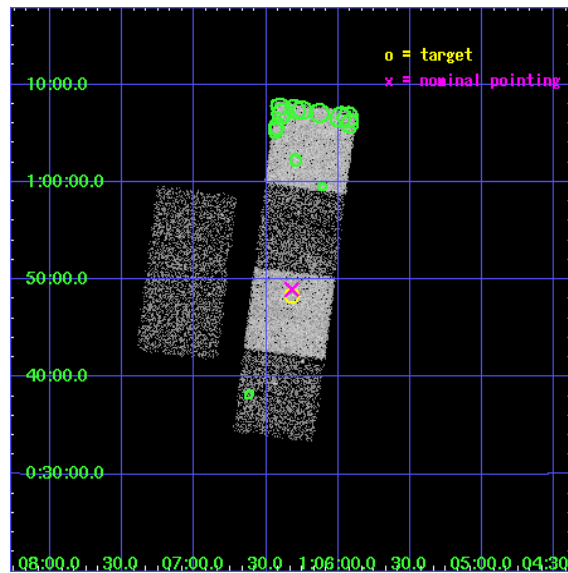
L2 Processing Date : Jan 3 2007

Contents

1	Front	2
2	OBI	3
2.1	OBI	3
2.1.1	Images	3
2.1.2	Bias	3
2.1.3	Parameters	4
2.1.4	Events	4
2.2	Compared Parameters	5
2.3	Aspect	6
2.4	Star Slots	9
2.4.1	Slot 3	9
2.4.2	Slot 4	10
2.4.3	Slot 5	11
2.4.4	Slot 6	12
2.4.5	Slot 7	13
2.5	FID Slots	14
2.5.1	Slot 0	14
2.5.2	Slot 1	15
2.5.3	Slot 2	16
3	Point Sources	17
A	Summary	18
A.1	Status	18
A.2	Comments	18

1 Front

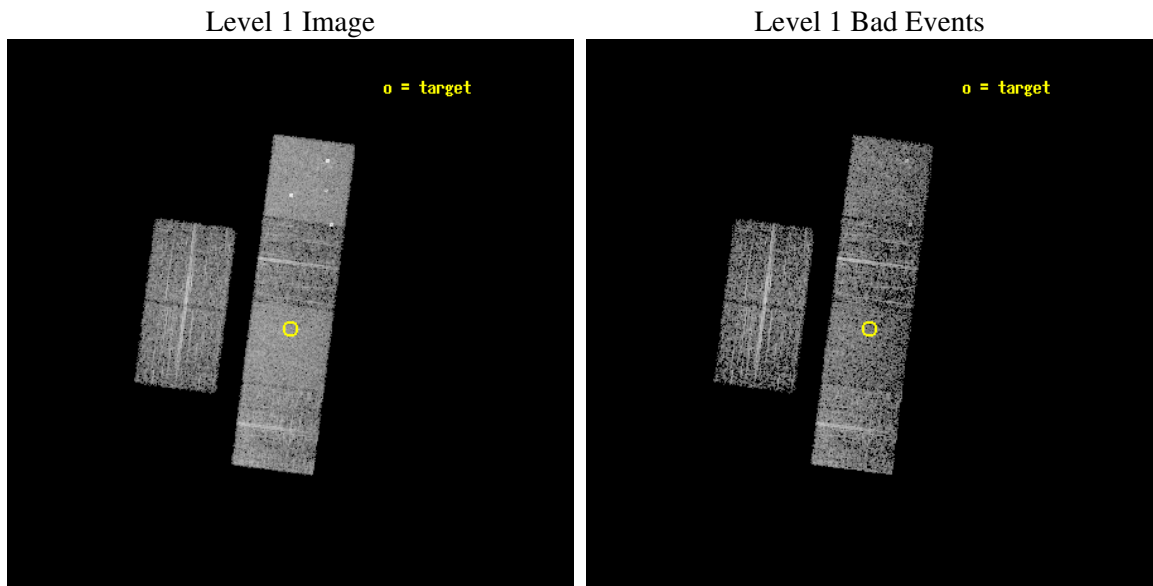
seq_num	700370
obs_id	2180
title	SURVEY OF RADIO QUIET Z>4 QUASARS
observer	Dr. Jill Bechtold
object	BRI 0103+0032
dtcycle	0
cycle	P
ra_targ	16.58
dec_targ	0.806111
ra_nom	16.580415593899
dec_nom	0.81591724969439
roll_nom	97.397524437601
revision	2
ontime	3756.8000034988
livetime	3709.2291397811
ontime2	3756.8000034988
ontime3	3756.8000034988
ontime5	3756.8000034988
ontime6	3756.8000034988
ontime7	3756.8000034988
ontime8	3753.5590432435
l2events	43147



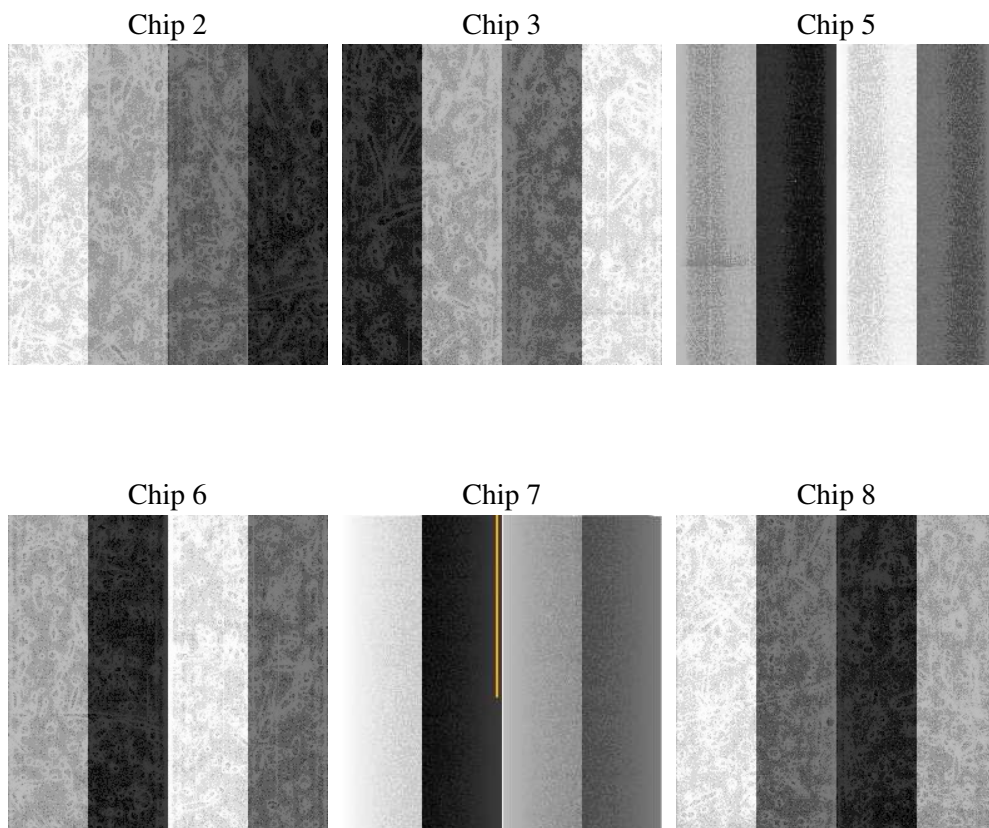
2 OBI

2.1 OBI

2.1.1 Images



2.1.2 Bias



2.1.3 Parameters

obi_num	0
ascdsver	7.6.9
caldbver	3.2.4
date	2007-01-03T14:26:14
revision	2

sched_exp_time	4000.000000
ontime	3759.5625584573
ontime2	3759.5625584573
ontime3	3759.5625584573
ontime5	3759.5625584573
ontime6	3759.5625584573
ontime7	3759.5625584573
ontime8	3756.3214786202
l1events	182659

2.1.4 Events

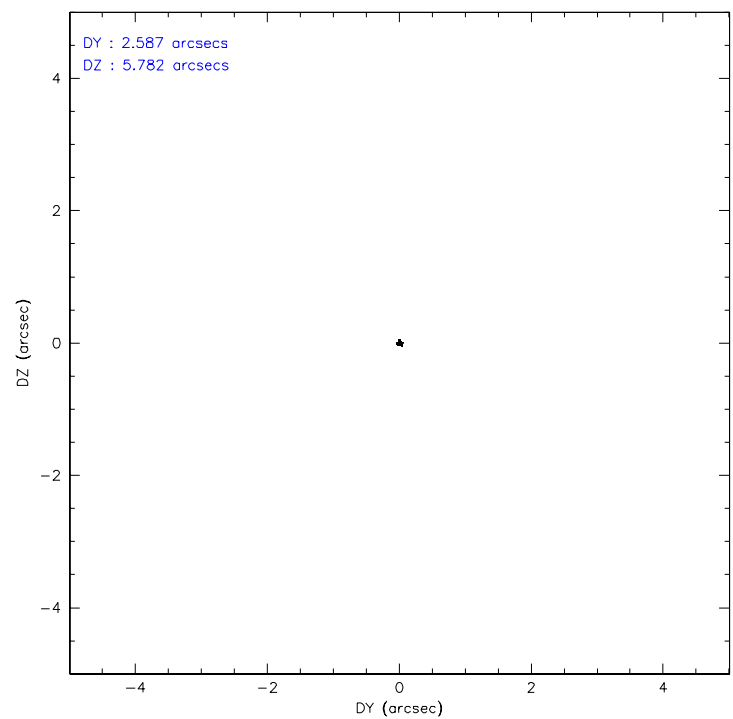
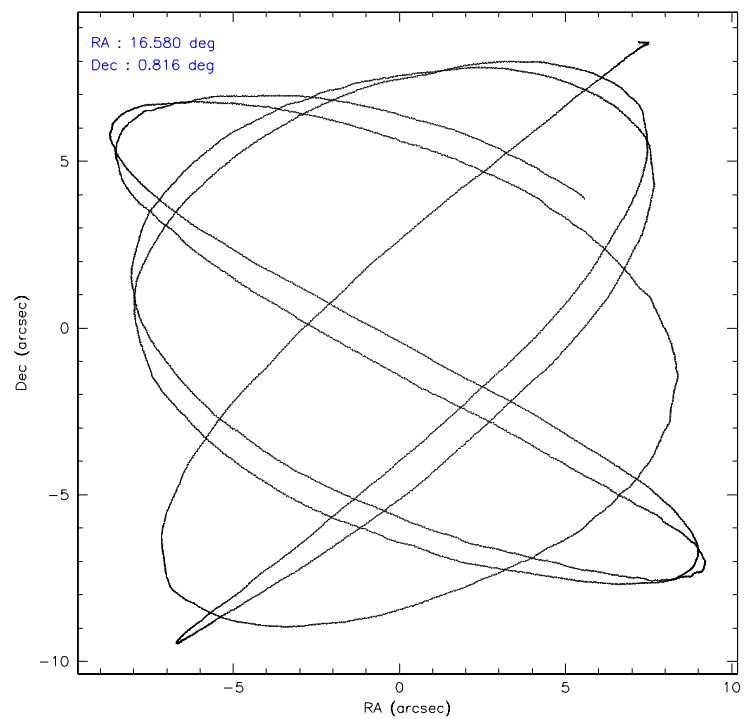
	ccd 2	ccd 3	ccd 5	ccd 6	ccd 7	ccd 8
level 1 events	24955	24563	39848	23886	35635	33772
rejected events	22233	21844	20159	20790	19819	27572
rejected %	89%	88%	50%	87%	55%	81%

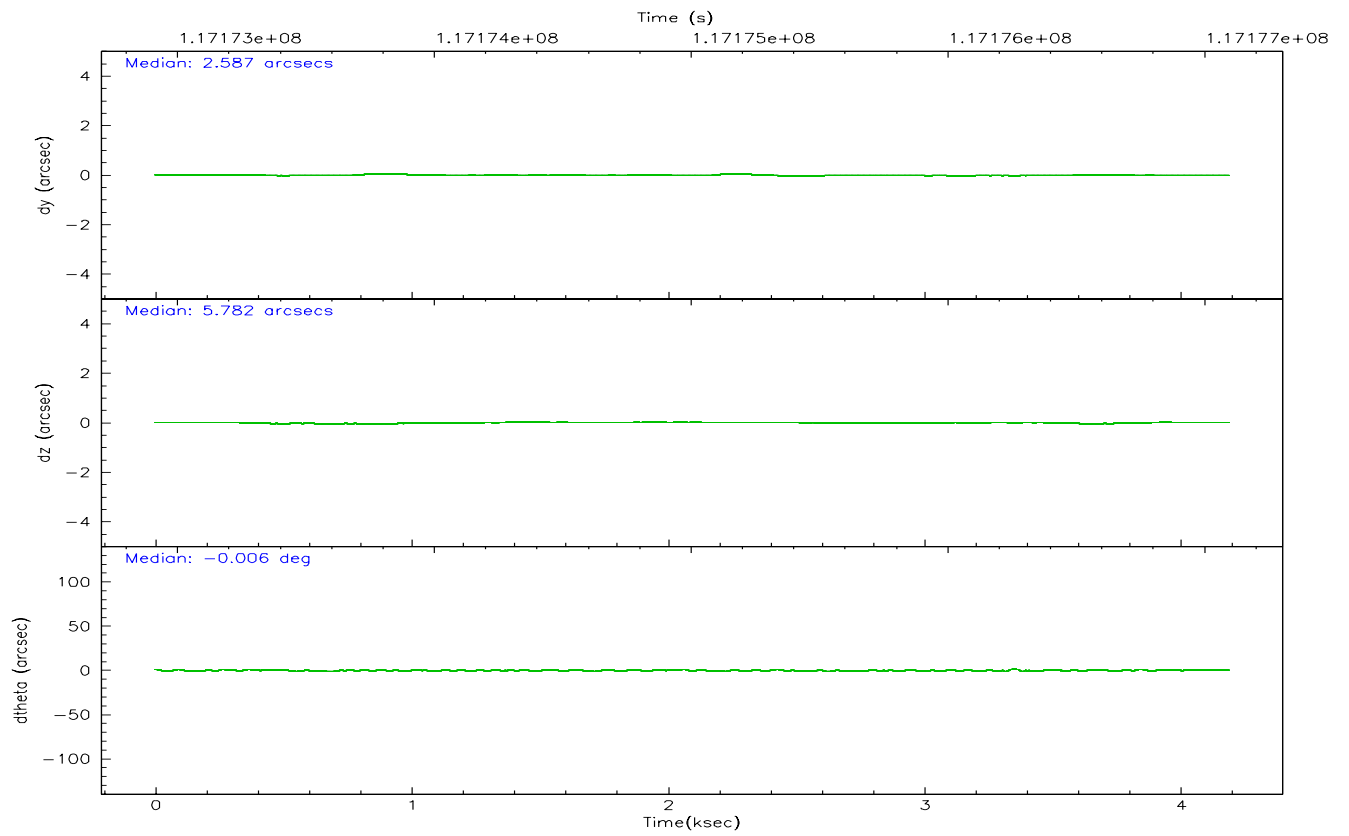
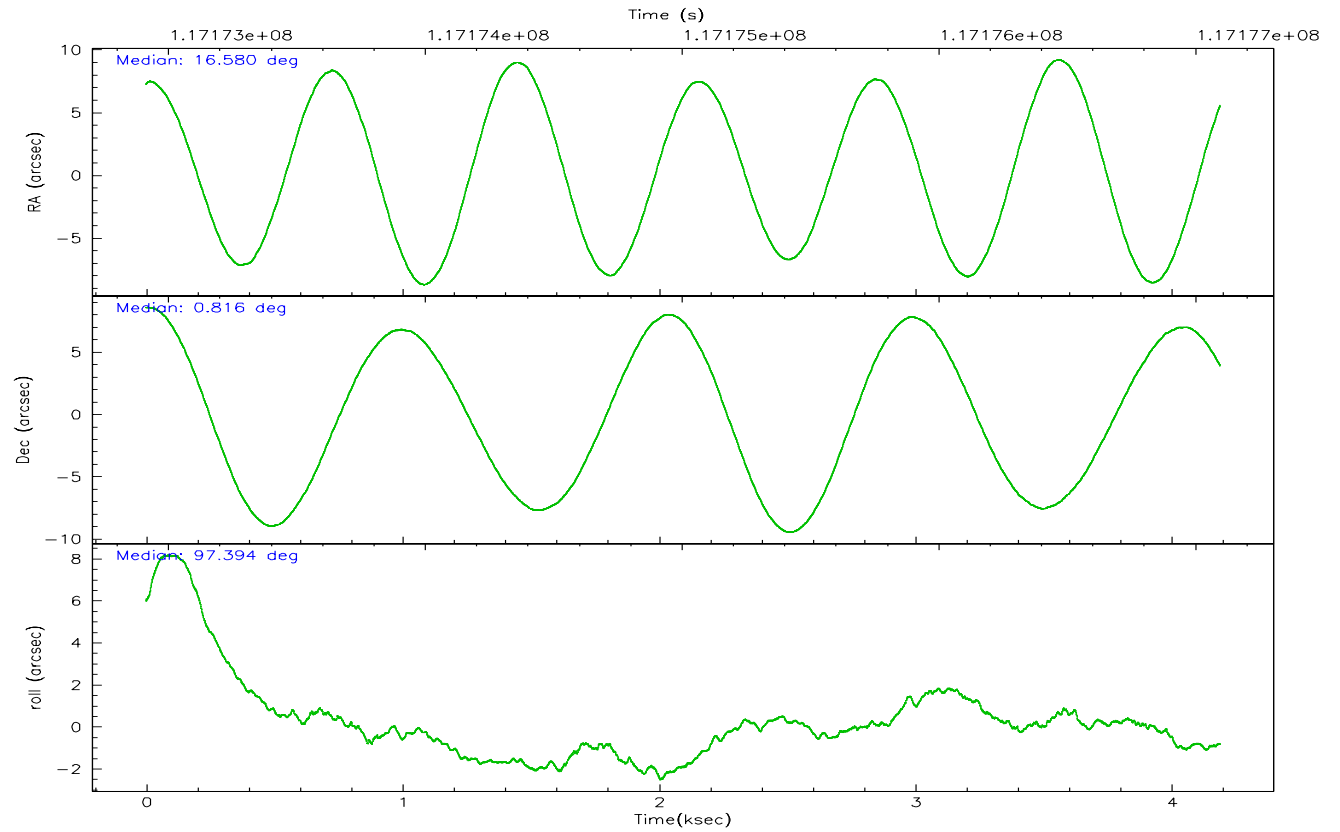
	ccd 2	ccd 3	ccd 5	ccd 6	ccd 7	ccd 8
grade 0 events	1141	1187	2259	1383	1268	1942
	4%	4%	5%	5%	3%	5%
grade 1 events	12	19	89	11	20	29
	0%	0%	0%	0%	0%	0%
grade 2 events	595	558	6112	570	3872	1297
	2%	2%	15%	2%	10%	3%
grade 3 events	252	245	516	298	862	596
	1%	0%	1%	1%	2%	1%
grade 4 events	269	258	494	282	826	622
	1%	1%	1%	1%	2%	1%
grade 5 events	828	927	1893	1014	2073	1314
	3%	3%	4%	4%	5%	3%
grade 6 events	466	476	10333	563	9002	1746
	1%	1%	25%	2%	25%	5%
grade 7 events	21392	20893	18152	19765	17712	26226
	85%	85%	45%	82%	49%	77%

2.2 Compared Parameters

Parameter	Planned	Actual	Parameter	Planned	Actual
Instrument	ACIS	ACIS	Obspar format version number	6	6
Detector	ACIS-235678	ACIS-235678	Obspar file type	PREDICTED	ACTUAL
Grating	NONE	NONE	Obspar update status	NONE	UPDATED
Data mode	FAINT	FAINT	Number of optional ACIS chips dropped	0	0
Observation mode	POINTING	POINTING	On-chip summing requested	N	N
Pointing RA	16.597289	16.58041559389937	Subarray requested	NONE	NONE
Pointing Dec	0.794368	0.8159172496943889	Alternating exposures requested	N	N
Pointing Roll	97.240645	97.39752443760065	Primary exposure time	0.000000	3.2
SIM focus pos (mm)	-0.684267	-0.6828225247311905			
SIM defocus (mm)	0	0.001444936568705701			
SIM translation stage pos (mm)	-190.132523	-190.1400660498719			
SIM translation stage offset (mm)	0	0.00754346686406393			
Observation start time	117173098.184000	117172670.56326			
Observation start date	2001-09-18T04:03:54	2001-09-18T03:57:50			
Observation end time	117177098.184000	117177787.87596			
Observation end date	2001-09-18T05:10:34	2001-09-18T05:23:07			
Read mode	TIMED	TIMED			

2.3 Aspect



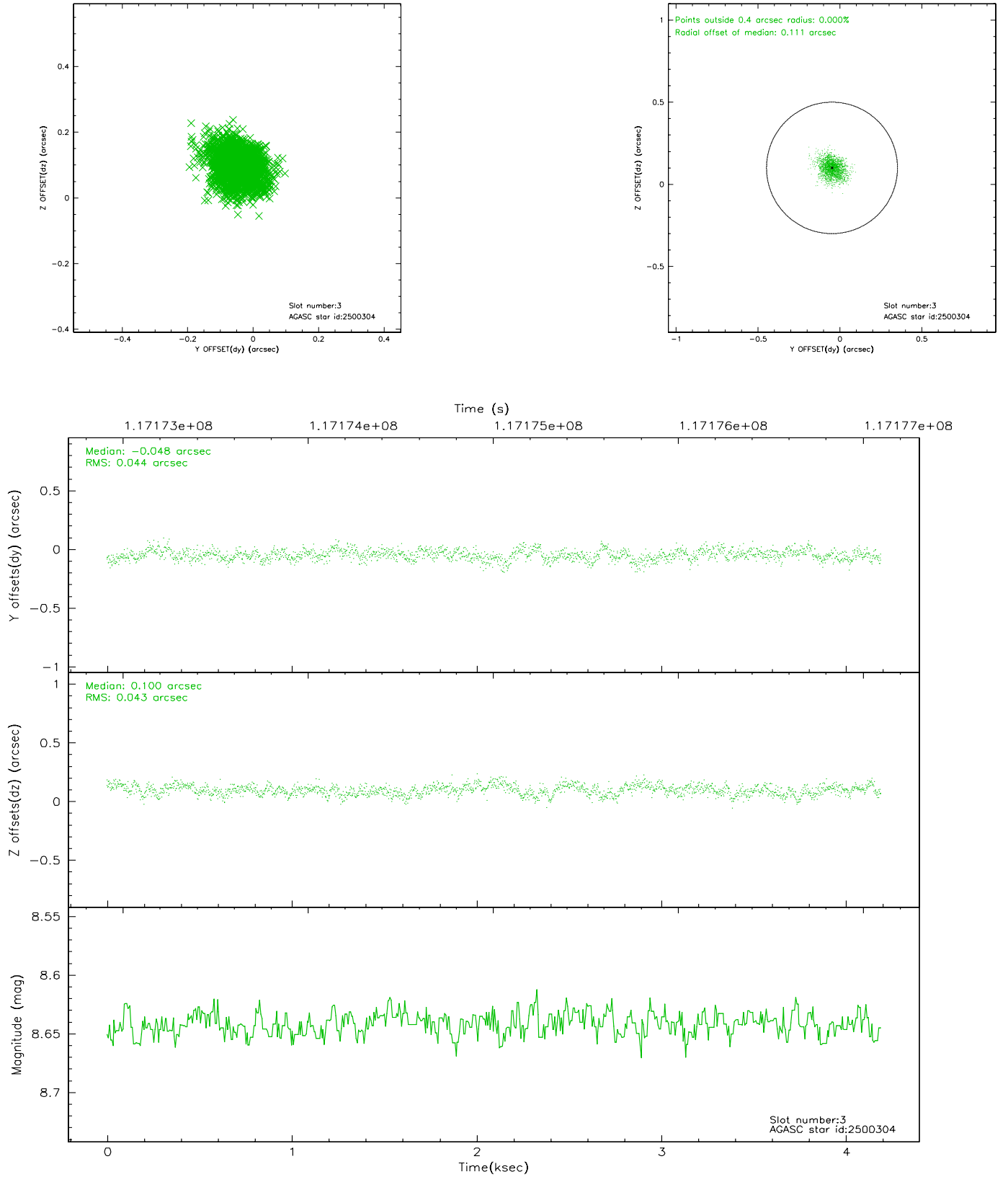


Slot Statistics

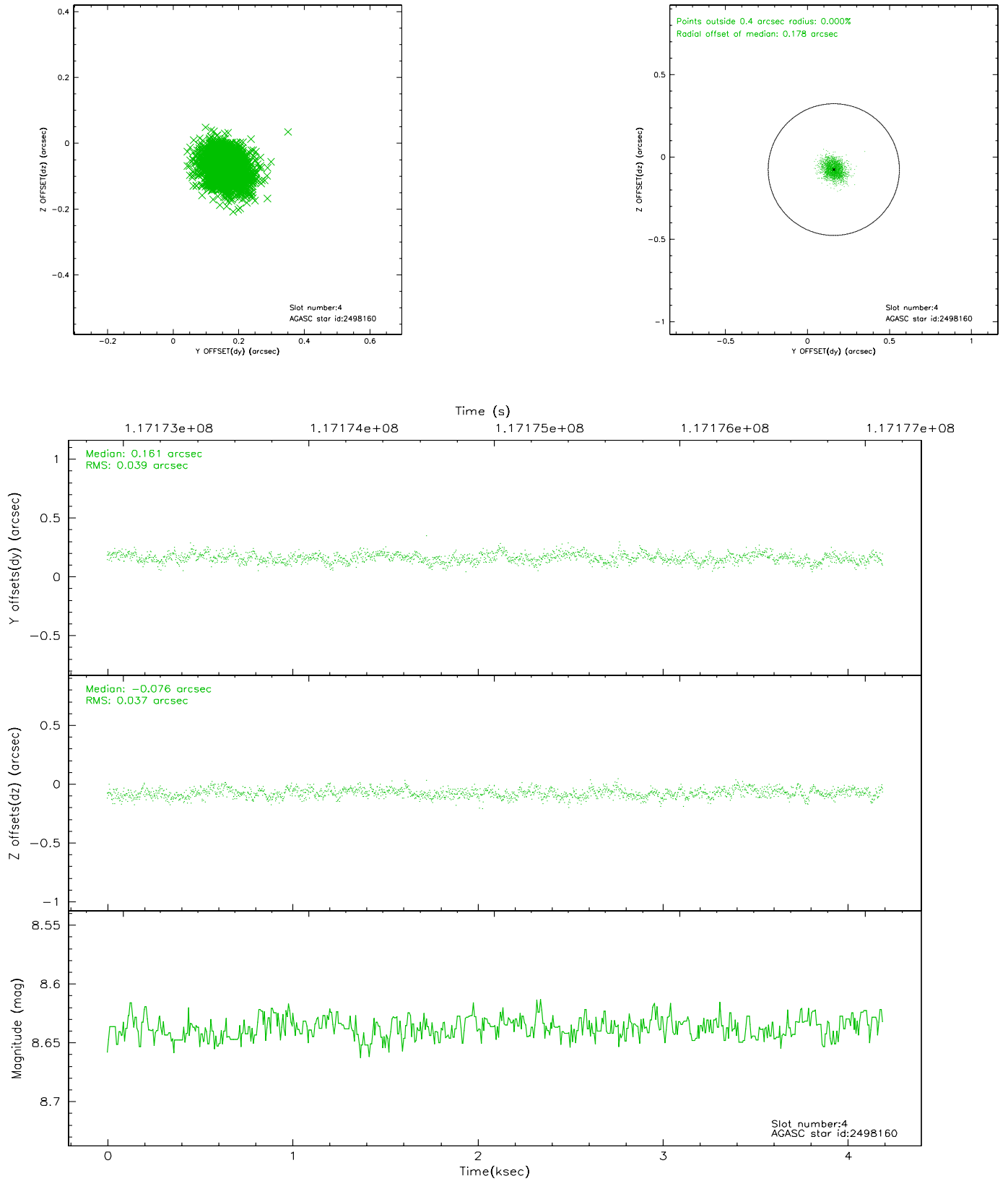
slot	status	id	mag	n_pts	med_dy	med_dz	dr1	dr2	ra	dec	mean_y	mean_z
0	FID	ACIS-S-2	7.11	1022	-0.027	0.022	0.006	0.010	0.000000	0.000000	-755.19	-1726.92
1	FID	ACIS-S-4	7.20	1022	-0.058	0.007	0.005	0.009	0.000000	0.000000	2157.33	180.11
2	FID	ACIS-S-5	7.24	1022	0.054	-0.020	0.006	0.010	0.000000	0.000000	-1806.10	175.33
3	GUIDE	2500304	8.64	2045	-0.048	0.100	0.066	0.108	16.571799	1.448277	2346.08	-206.28
4	GUIDE	2498160	8.64	2043	0.161	-0.076	0.056	0.093	16.460620	0.343812	-1546.53	691.44
5	GUIDE	2496872	8.85	2045	-0.108	0.055	0.069	0.107	16.933662	1.413437	2056.86	-1482.22
6	GUIDE	2493488	8.70	2044	0.058	-0.149	0.060	0.097	16.409472	1.201006	1537.73	484.49
7	GUIDE	2492416	8.83	2044	-0.060	0.073	0.062	0.102	16.803588	1.355176	1909.29	-991.44

2.4 Star Slots

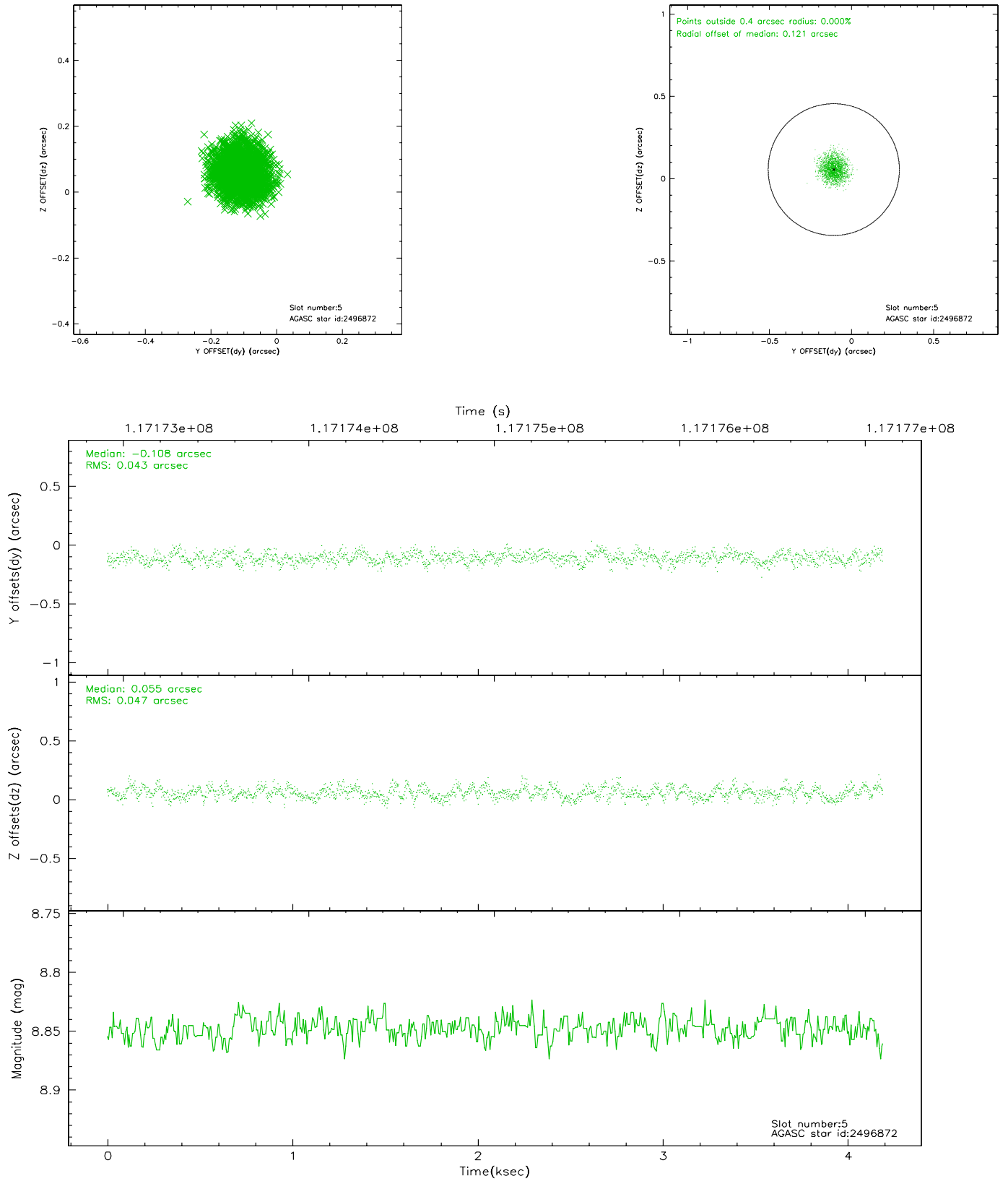
2.4.1 Slot 3



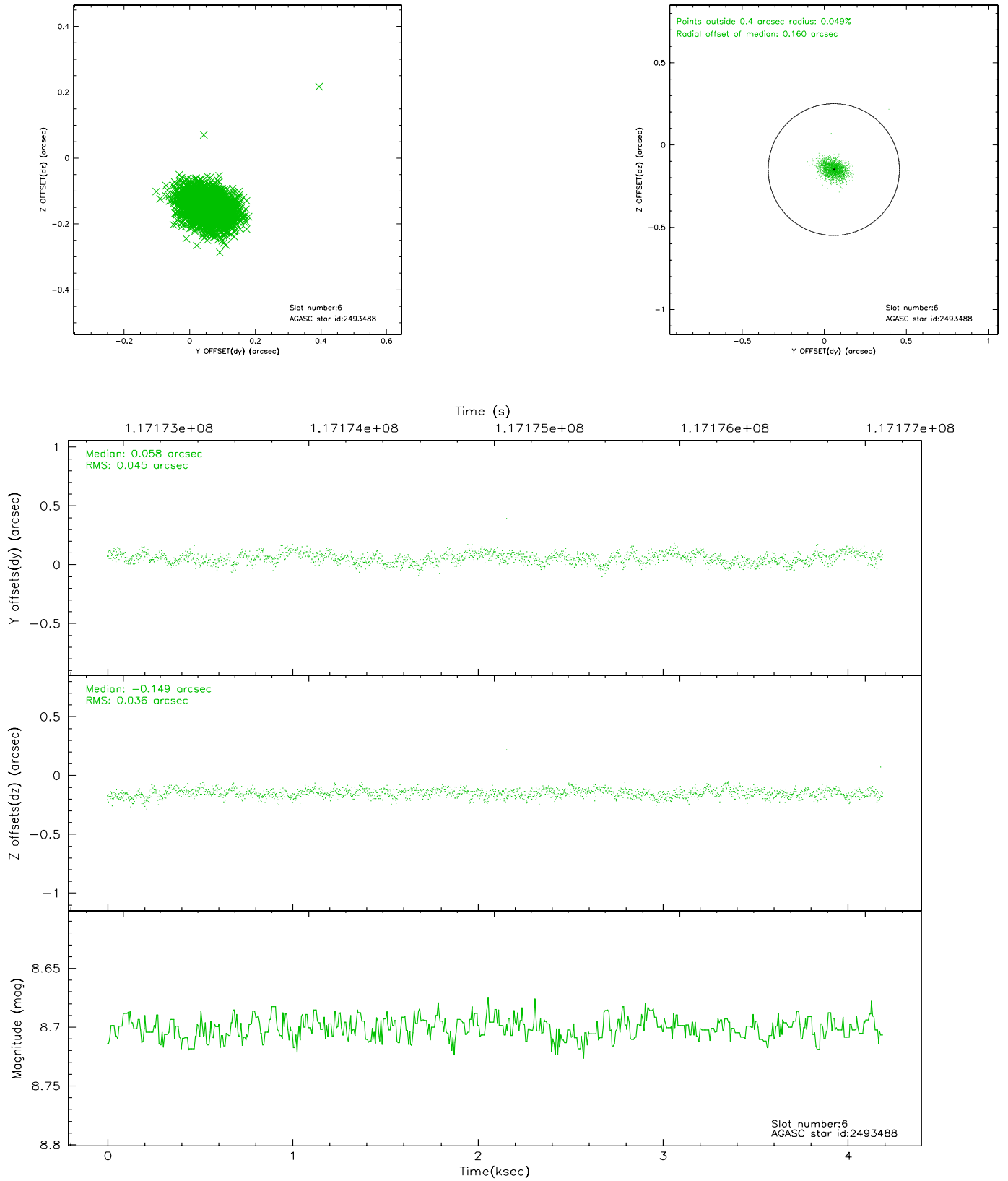
2.4.2 Slot 4



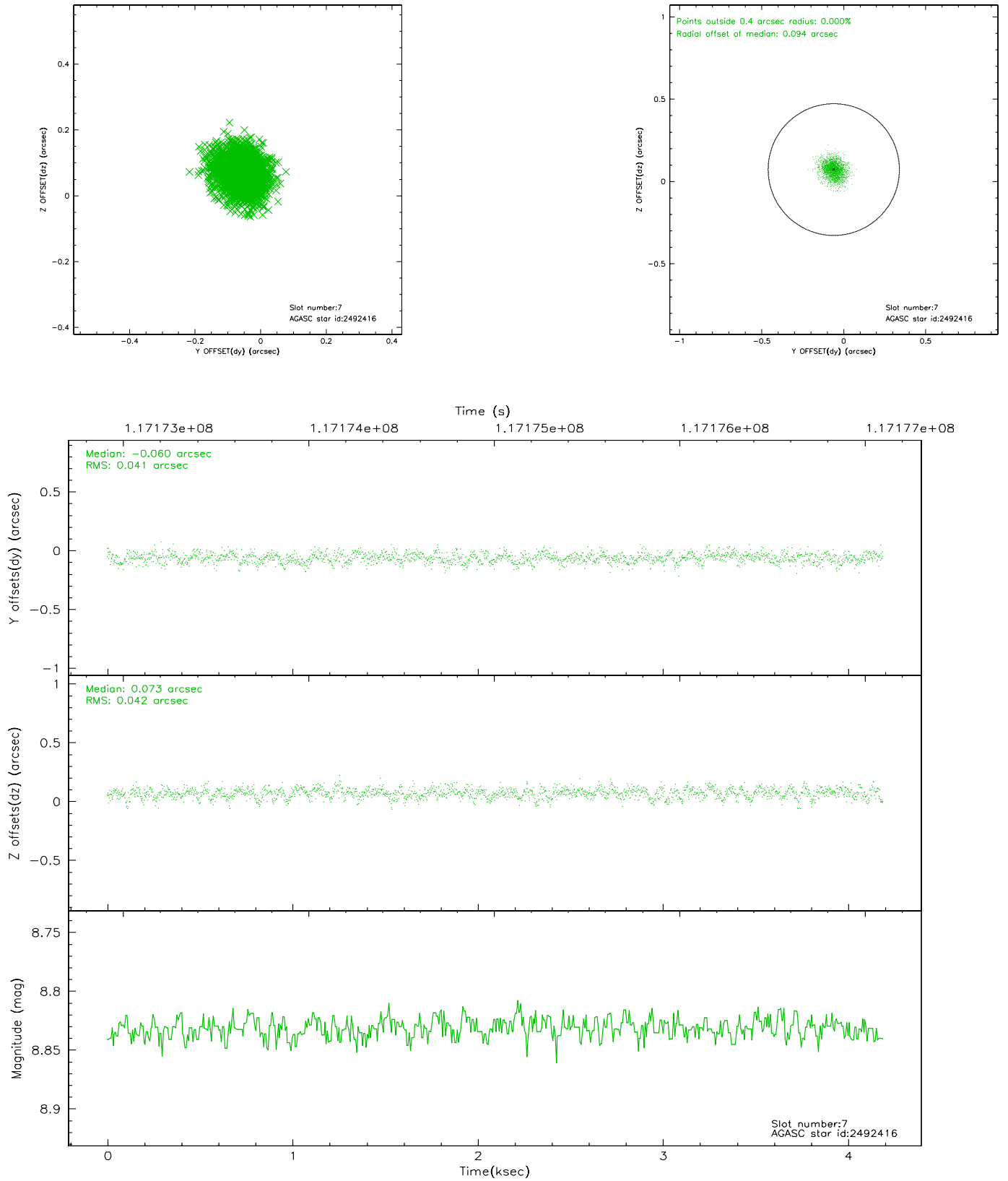
2.4.3 Slot 5



2.4.4 Slot 6

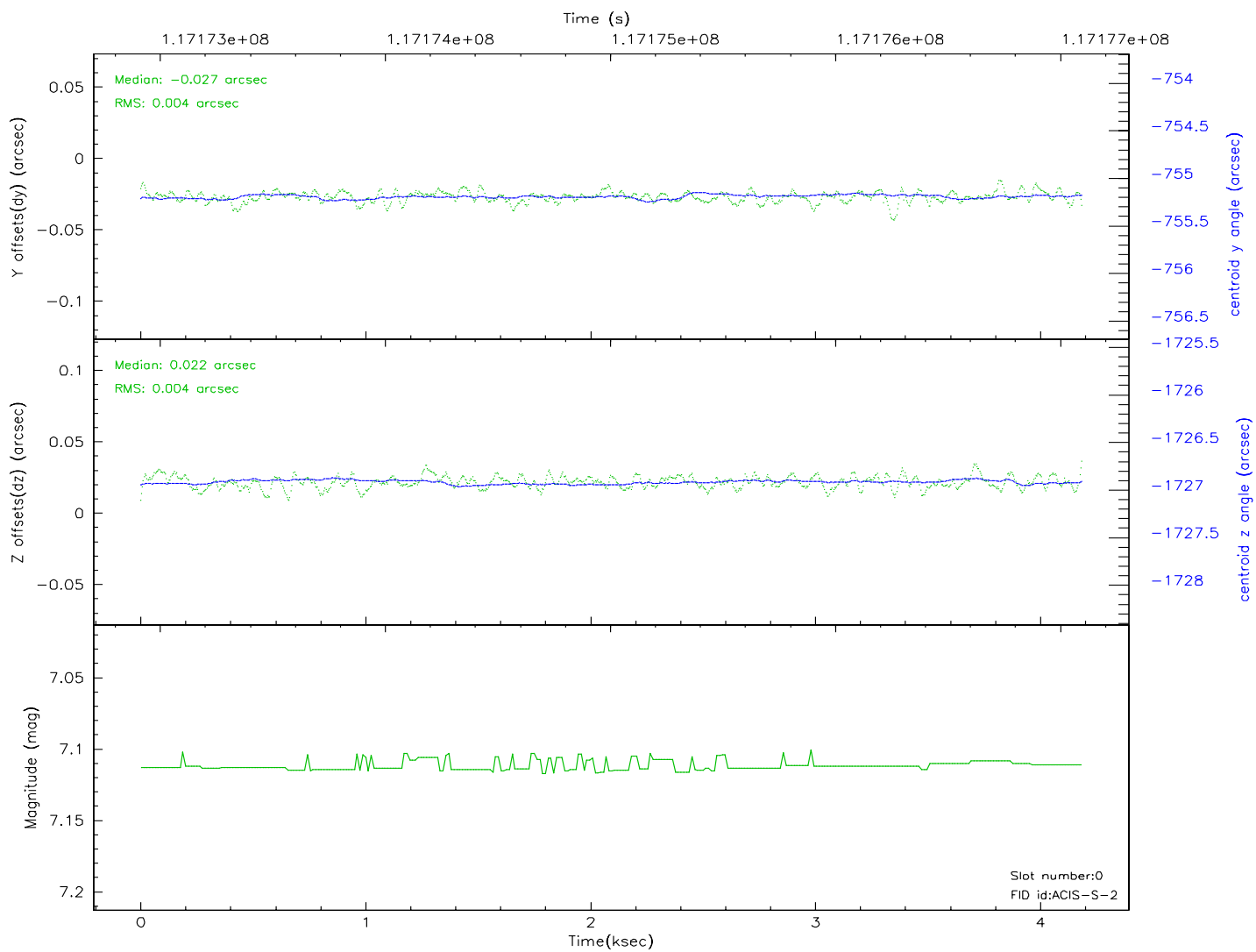
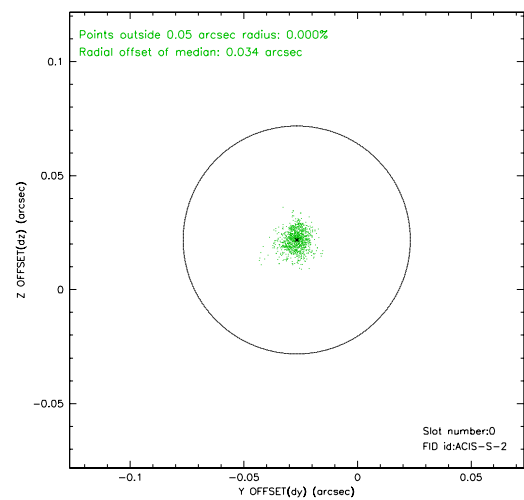
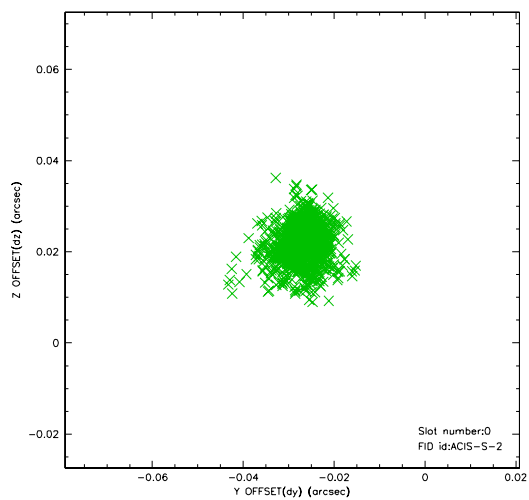


2.4.5 Slot 7

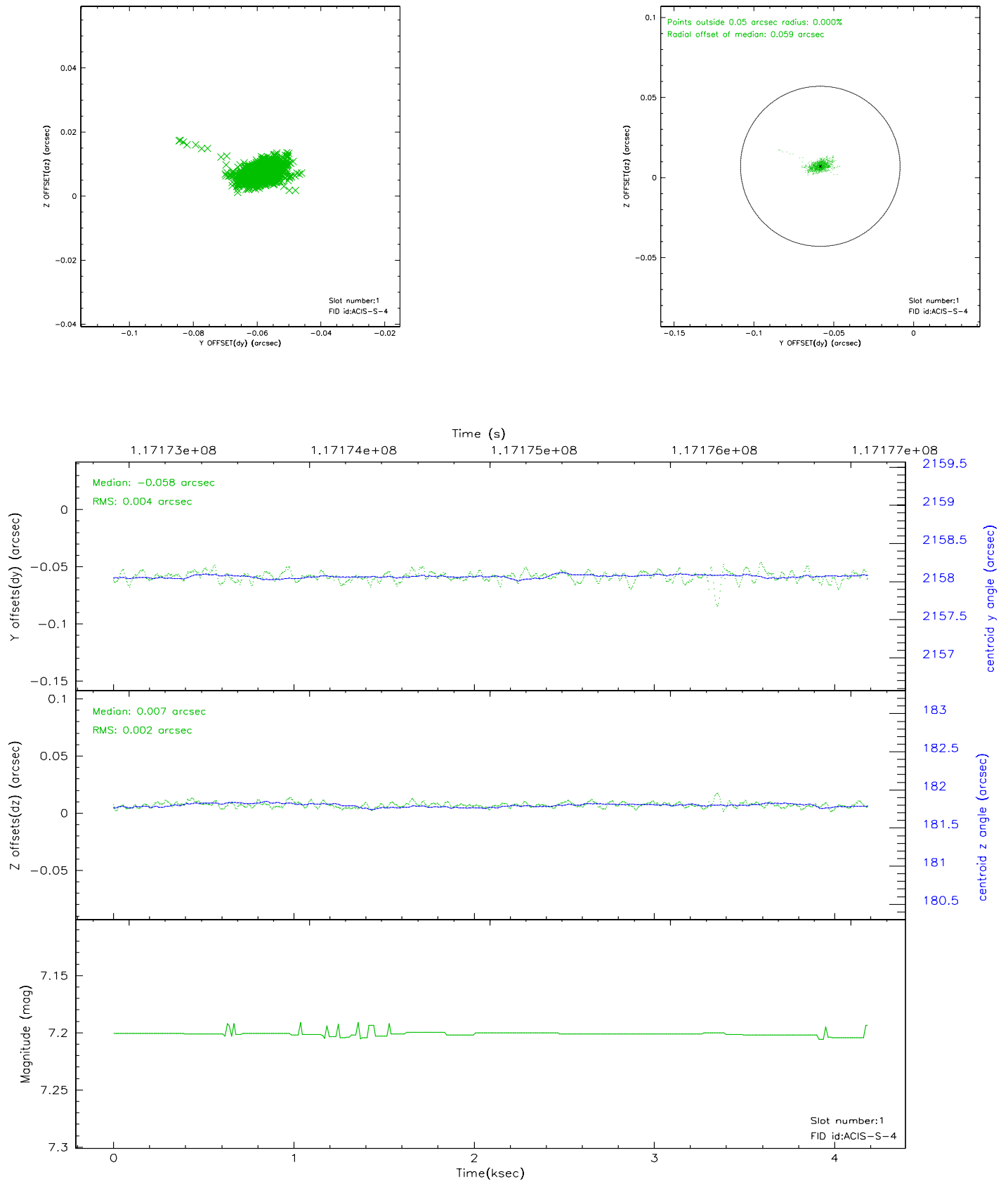


2.5 FID Slots

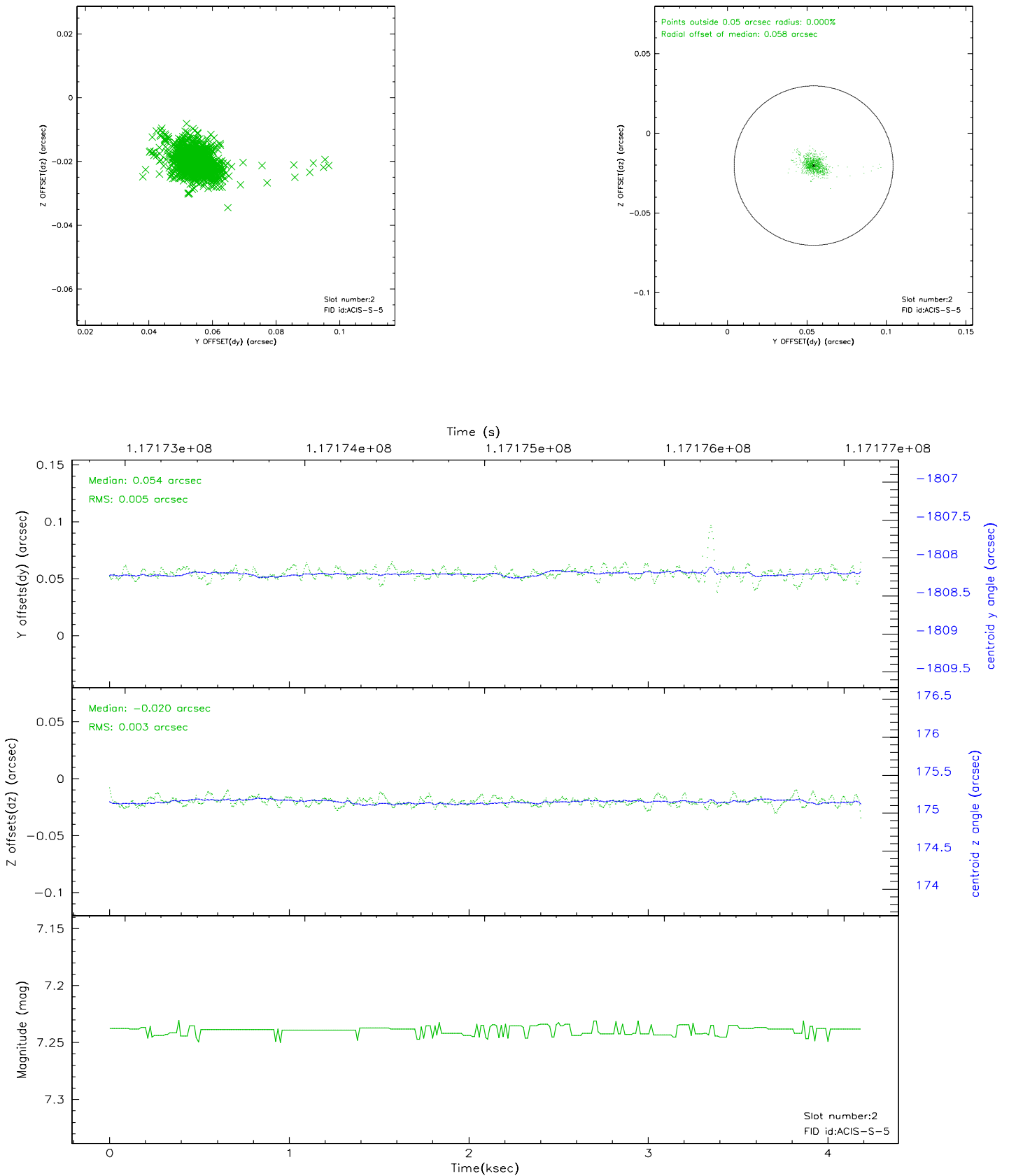
2.5.1 Slot 0



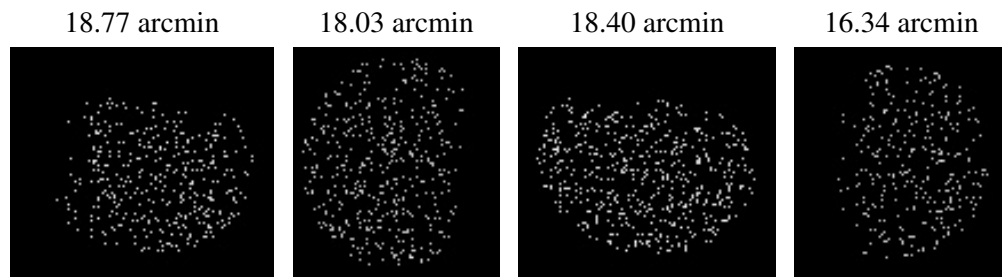
2.5.2 Slot 1



2.5.3 Slot 2



3 Point Sources



A Summary

A.1 Status

V&V Scientist	Beth Sundheim
V&V Date (YYYY-MM-DD)	2007.01.04
V&V Edition	1
V&V Disposition and Status	OK
V&V Charge Time	3.757

A.2 Comments