

V&V Reference Report

L2 ASCDS Version : 7.6.9

Observation 2179 - L2 Version 001
Chandra X-Ray Center

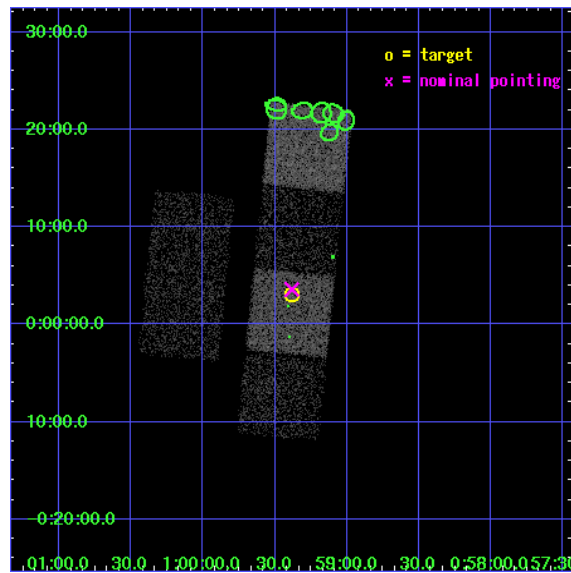
L2 Processing Date : Jan 3 2007

Contents

1	Front	2
2	OBI	3
2.1	OBI	3
2.1.1	Images	3
2.1.2	Bias	3
2.1.3	Parameters	4
2.1.4	Events	4
2.2	Compared Parameters	5
2.3	Aspect	6
2.4	Star Slots	9
2.4.1	Slot 3	9
2.4.2	Slot 4	10
2.4.3	Slot 5	11
2.4.4	Slot 6	12
2.4.5	Slot 7	13
2.5	FID Slots	14
2.5.1	Slot 0	14
2.5.2	Slot 1	15
2.5.3	Slot 2	16
3	Point Sources	17
A	Summary	18
A.1	Status	18
A.2	Comments	18

1 Front

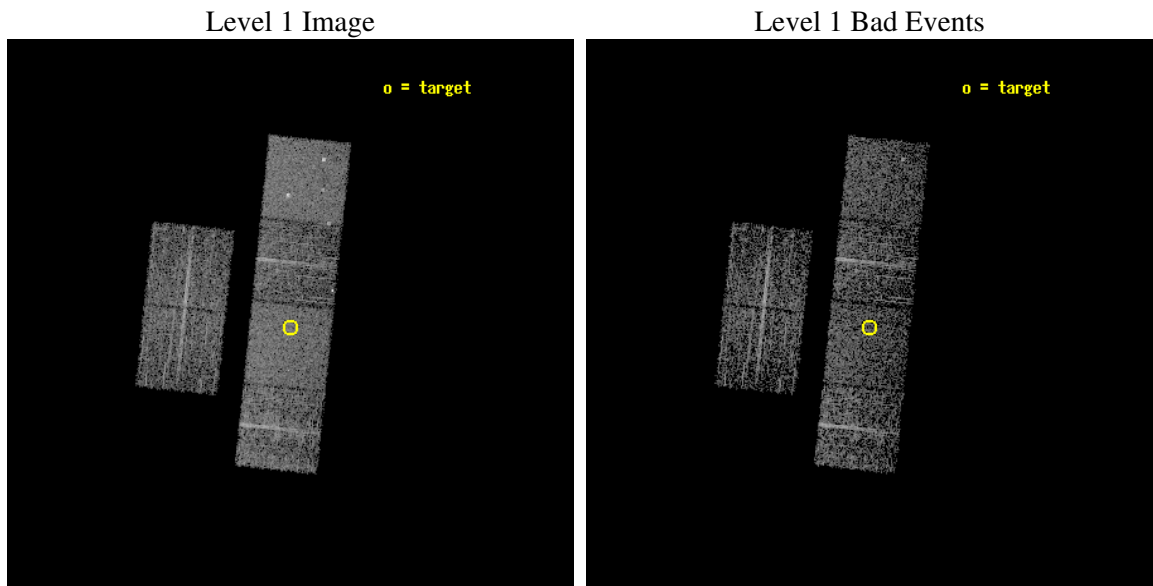
seq_num	700369
obs_id	2179
title	SURVEY OF RADIO QUIET Z>4 QUASARS
observer	Dr. Jill Bechtold
object	PSS 0059+0003
dtcycle	0
cycle	P
ra_targ	14.845
dec_targ	0.050278
ra_nom	14.845834312323
dec_nom	0.059847760359683
roll_nom	95.943127515186
revision	2
ontime	2713.6000025272
livetime	2679.2387653615
ontime2	2713.6000025272
ontime3	2710.3590322733
ontime5	2713.6000025272
ontime6	2713.6000025272
ontime7	2713.6000025272
ontime8	2713.6000025272
l2events	26733



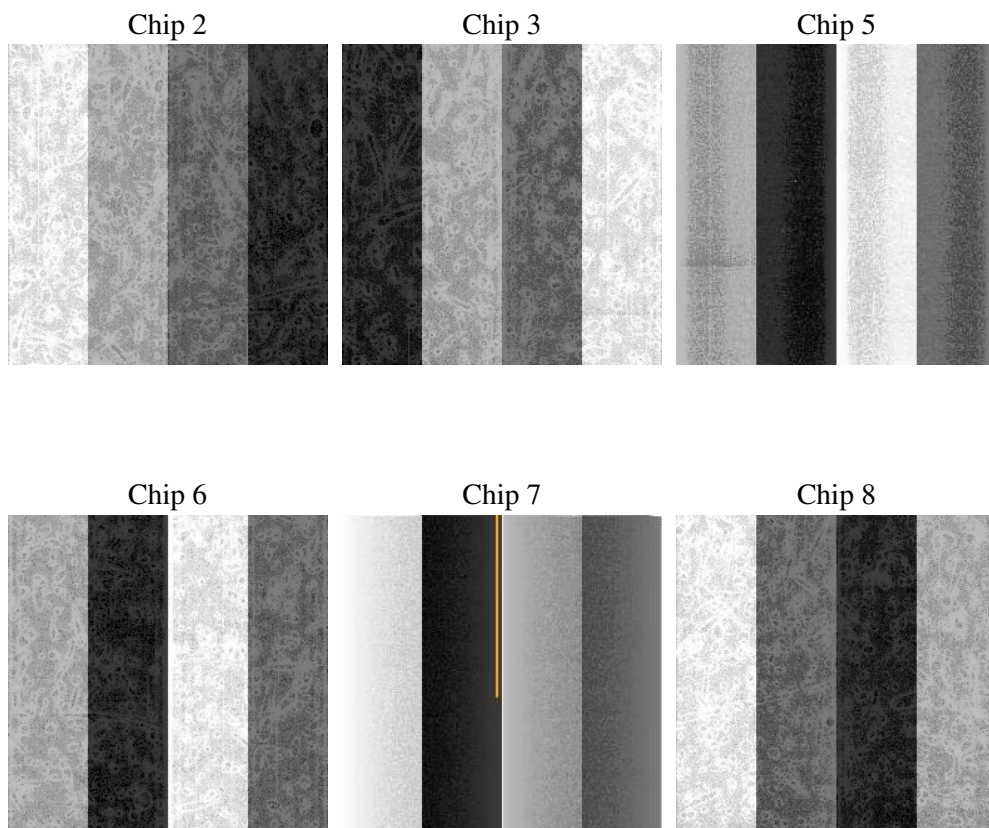
2 OBI

2.1 OBI

2.1.1 Images



2.1.2 Bias



2.1.3 Parameters

obi_num	0
ascdsver	7.6.9
caldsver	3.2.4
date	2007-01-03T14:26:04
revision	2

sched_exp_time	2800.000000
ontime	2719.1992176771
ontime2	2719.1991877556
ontime3	2715.9582175016
ontime5	2719.1992176771
ontime6	2719.1991877556
ontime7	2719.1992176771
ontime8	2719.1991877556
l1events	126201

2.1.4 Events

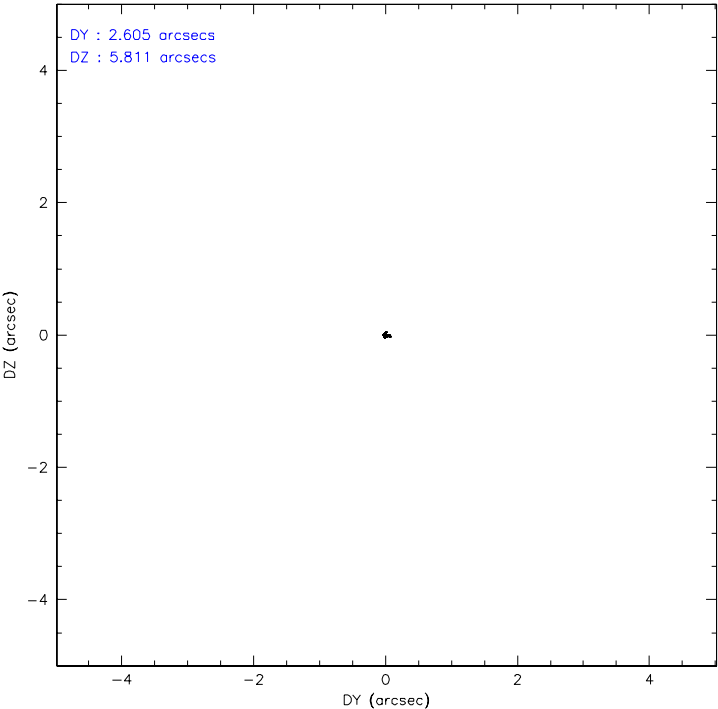
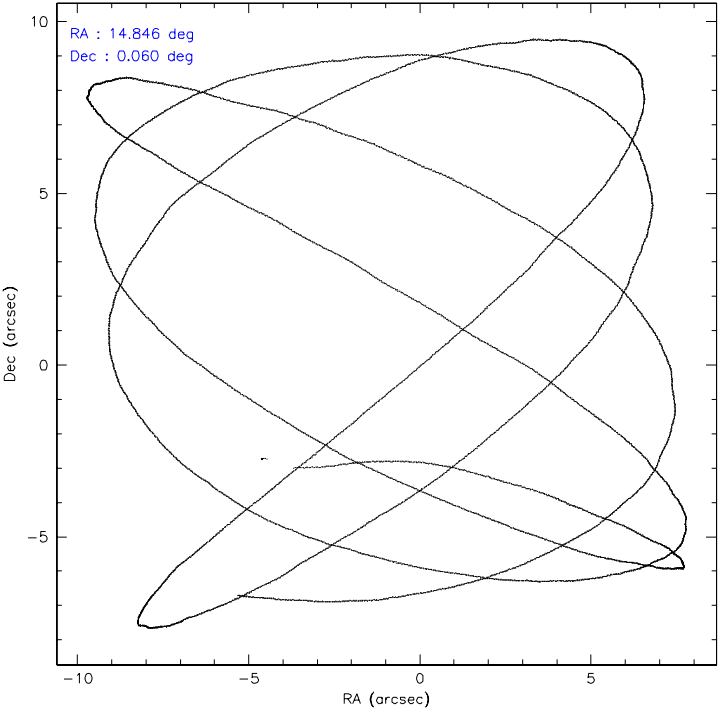
	ccd 2	ccd 3	ccd 5	ccd 6	ccd 7	ccd 8
level 1 events	18038	17883	26325	18447	23045	22463
rejected events	16013	15926	14442	16022	14190	17896
rejected %	88%	89%	54%	86%	61%	79%

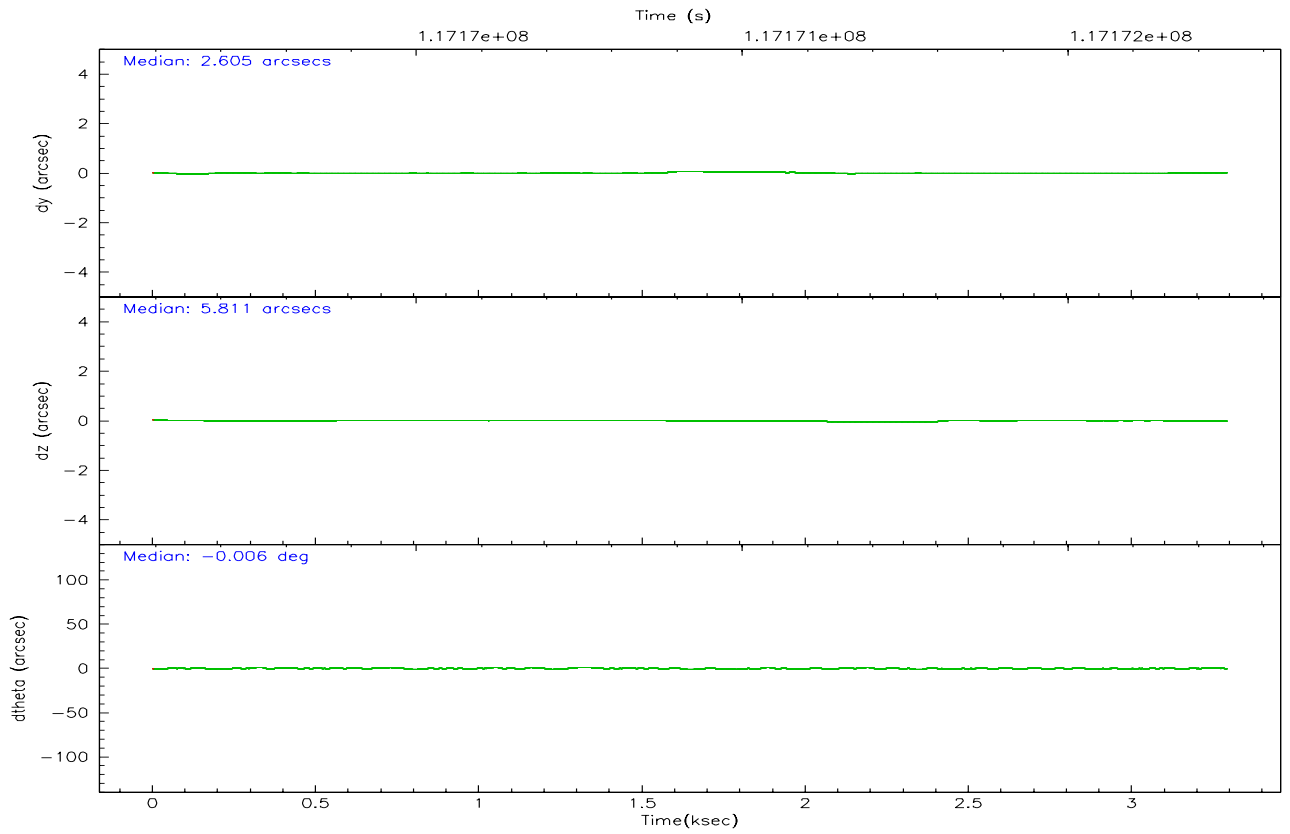
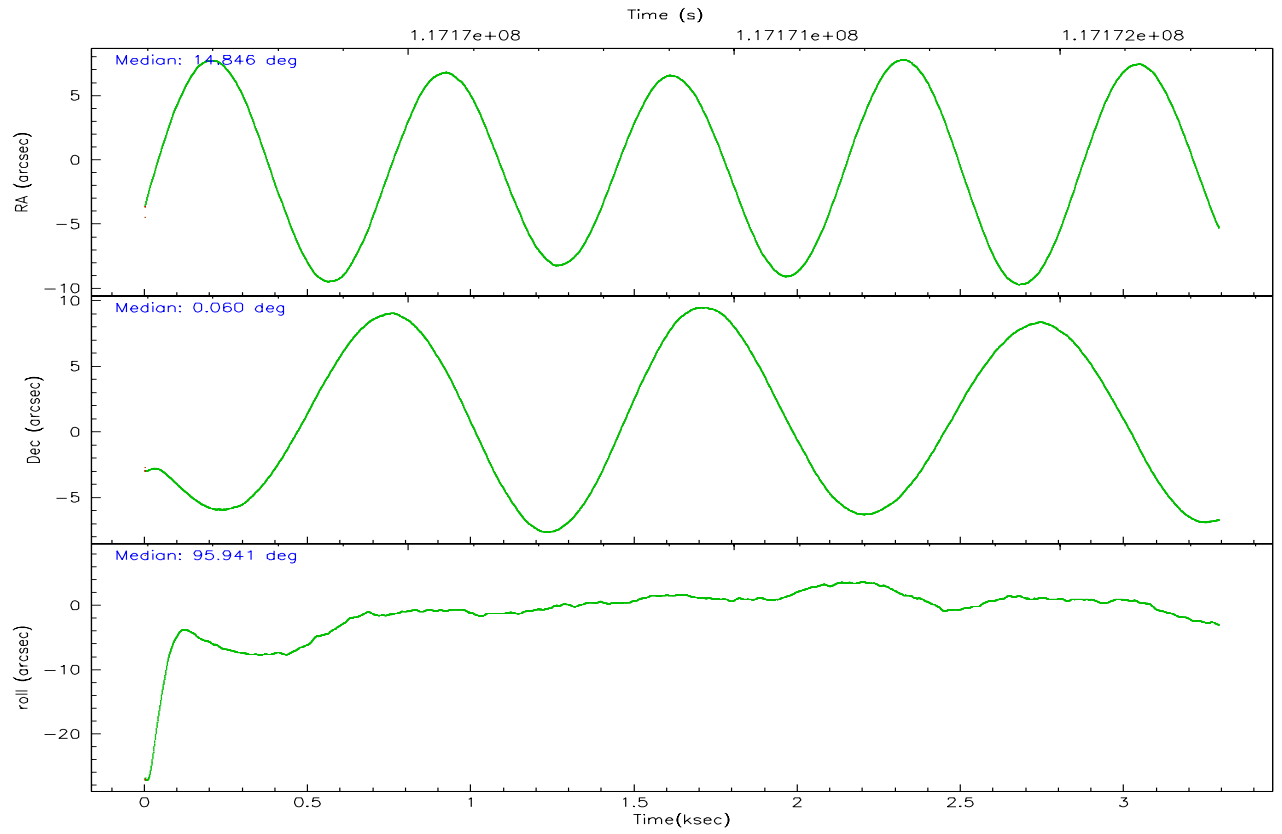
	ccd 2	ccd 3	ccd 5	ccd 6	ccd 7	ccd 8
grade 0 events	868	796	1216	1137	561	1391
	4%	4%	4%	6%	2%	6%
grade 1 events	14	2	43	11	10	8
	0%	0%	0%	0%	0%	0%
grade 2 events	405	401	3702	423	2168	1055
	2%	2%	14%	2%	9%	4%
grade 3 events	204	188	286	216	484	488
	1%	1%	1%	1%	2%	2%
grade 4 events	185	208	276	236	447	435
	1%	1%	1%	1%	1%	1%
grade 5 events	678	667	1254	688	1528	928
	3%	3%	4%	3%	6%	4%
grade 6 events	369	373	6440	420	5218	1205
	2%	2%	24%	2%	22%	5%
grade 7 events	15315	15248	13108	15316	12629	16953
	84%	85%	49%	83%	54%	75%

2.2 Compared Parameters

Parameter	Planned	Actual	Parameter	Planned	Actual
Instrument	ACIS	ACIS	Obspar format version number	6	6
Detector	ACIS-235678	ACIS-235678	Obspar file type	PREDICTED	ACTUAL
Grating	NONE	NONE	Obspar update status	NONE	UPDATED
Data mode	FAINT	FAINT	Number of optional ACIS chips dropped	0	0
Observation mode	POINTING	POINTING	On-chip summing requested	N	N
Pointing RA	14.861982	14.84583431232301	Subarray requested	NONE	NONE
Pointing Dec	0.038091	0.05984776035968304	Alternating exposures requested	N	N
Pointing Roll	95.786547	95.94312751518582	Primary exposure time	0.000000	3.2
SIM focus pos (mm)	-0.684267	-0.6828225247311905			
SIM defocus (mm)	0	0.001444936568705701			
SIM translation stage pos (mm)	-190.132523	-190.1400660498719			
SIM translation stage offset (mm)	0	0.00754346686406393			
Observation start time	117169685.184000	117168575.6881			
Observation start date	2001-09-18T03:07:01	2001-09-18T02:49:35			
Observation end time	117172485.184000	117172670.56326			
Observation end date	2001-09-18T03:53:41	2001-09-18T03:57:50			
Read mode	TIMED	TIMED			

2.3 Aspect



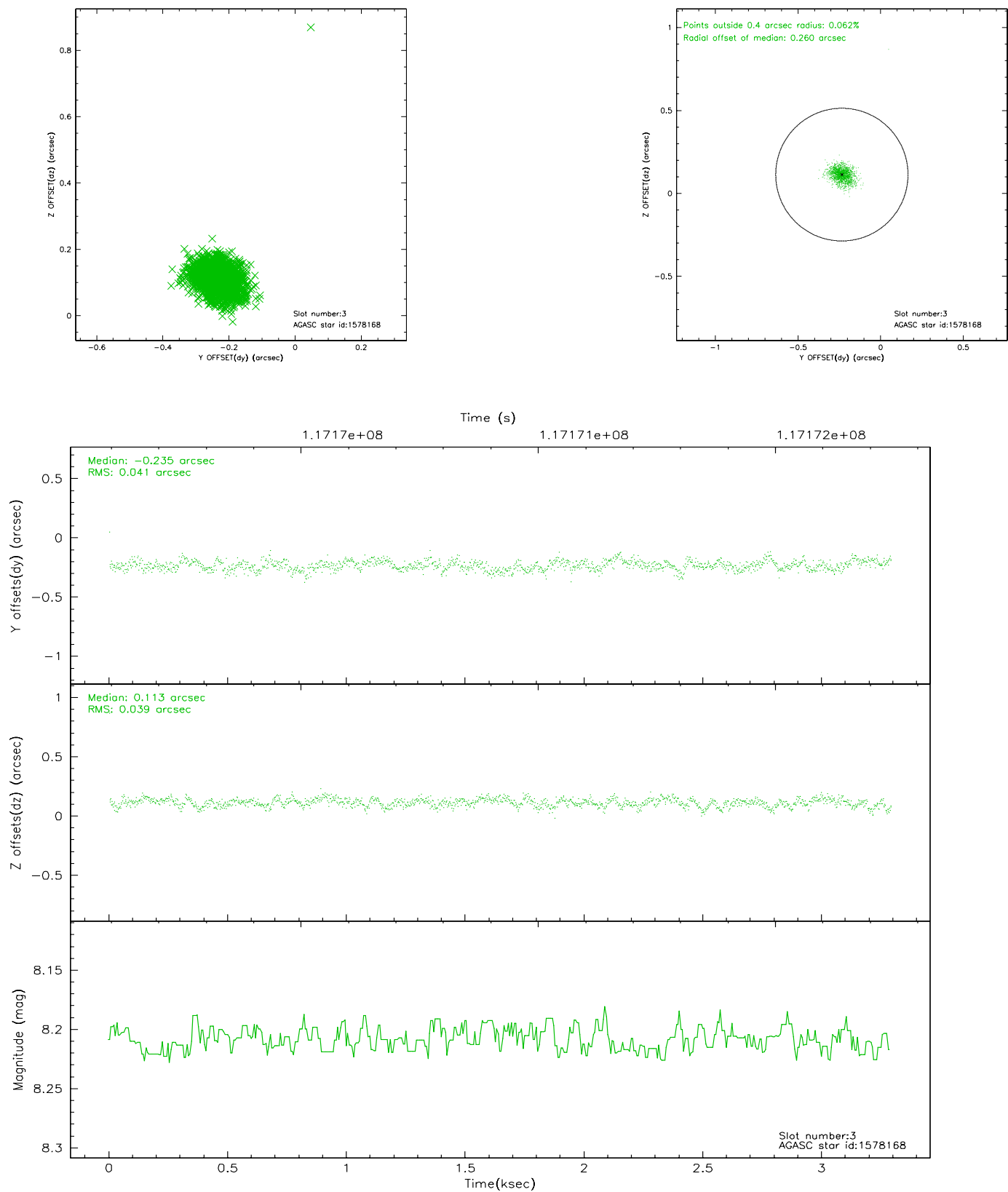


Slot Statistics

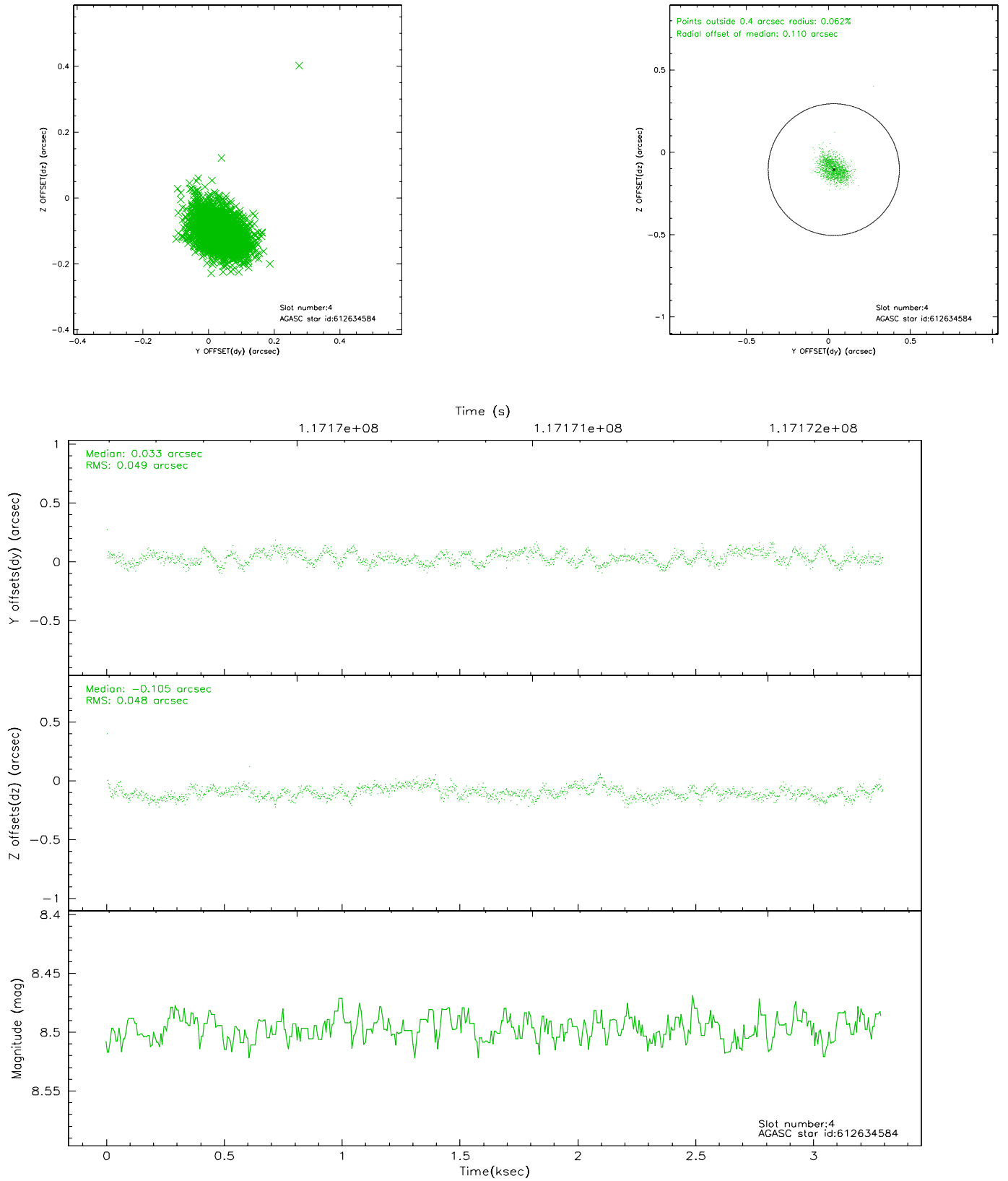
slot	status	id	mag	n_pts	med_dy	med_dz	dr1	dr2	ra	dec	mean_y	mean_z
0	FID	ACIS-S-2	7.12	803	-0.029	0.021	0.008	0.013	0.000000	0.000000	-755.22	-1726.94
1	FID	ACIS-S-4	7.20	803	-0.061	0.008	0.008	0.014	0.000000	0.000000	2157.10	179.62
2	FID	ACIS-S-5	7.24	803	0.059	-0.021	0.007	0.012	0.000000	0.000000	-1805.54	175.34
3	GUIDE	1578168	8.21	1606	-0.235	0.113	0.057	0.091	14.902539	0.670706	2250.92	-374.78
4	GUIDE	612634584	8.50	1606	0.033	-0.105	0.072	0.114	14.779562	-0.145020	-624.46	361.19
5	GUIDE	612634776	9.34	1604	0.160	-0.199	0.116	0.188	14.252004	-0.472149	-1606.48	2369.77
6	GUIDE	1581416	10.26	1603	0.009	0.032	0.149	0.234	14.987380	0.673896	2230.70	-678.35
7	GUIDE	613556408	9.10	1605	0.024	0.154	0.097	0.148	15.393003	-0.320388	-1475.27	-1772.42

2.4 Star Slots

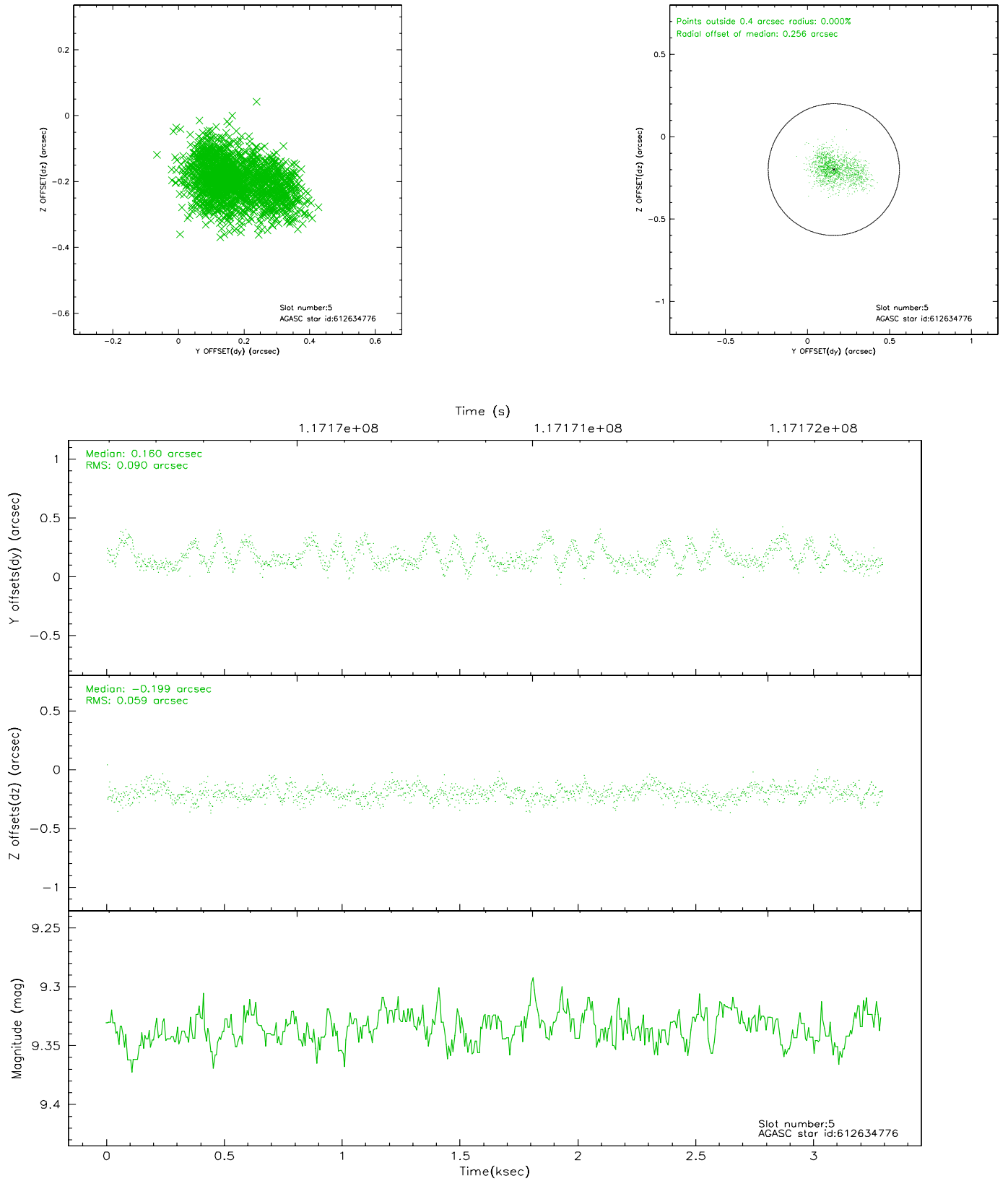
2.4.1 Slot 3



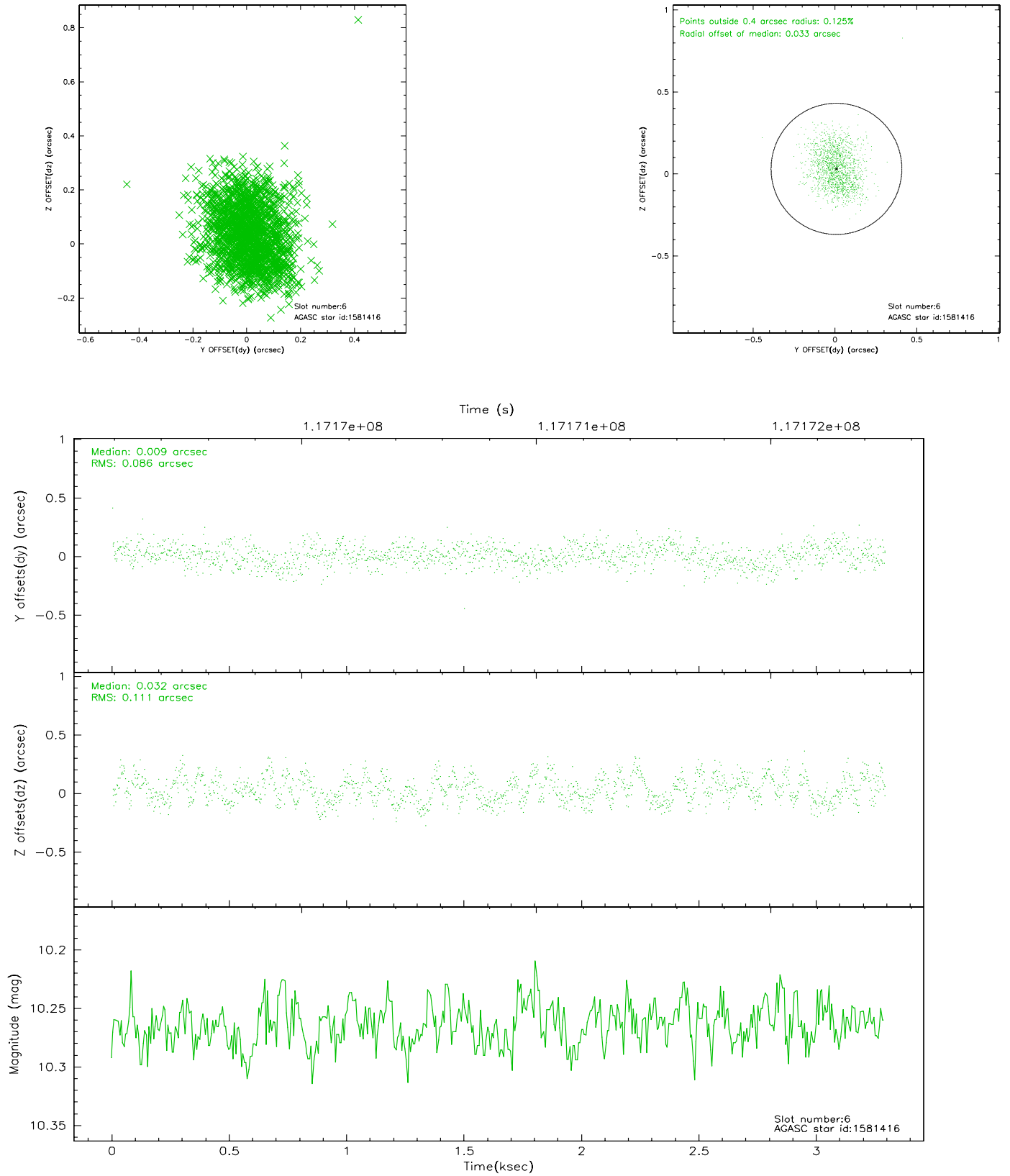
2.4.2 Slot 4



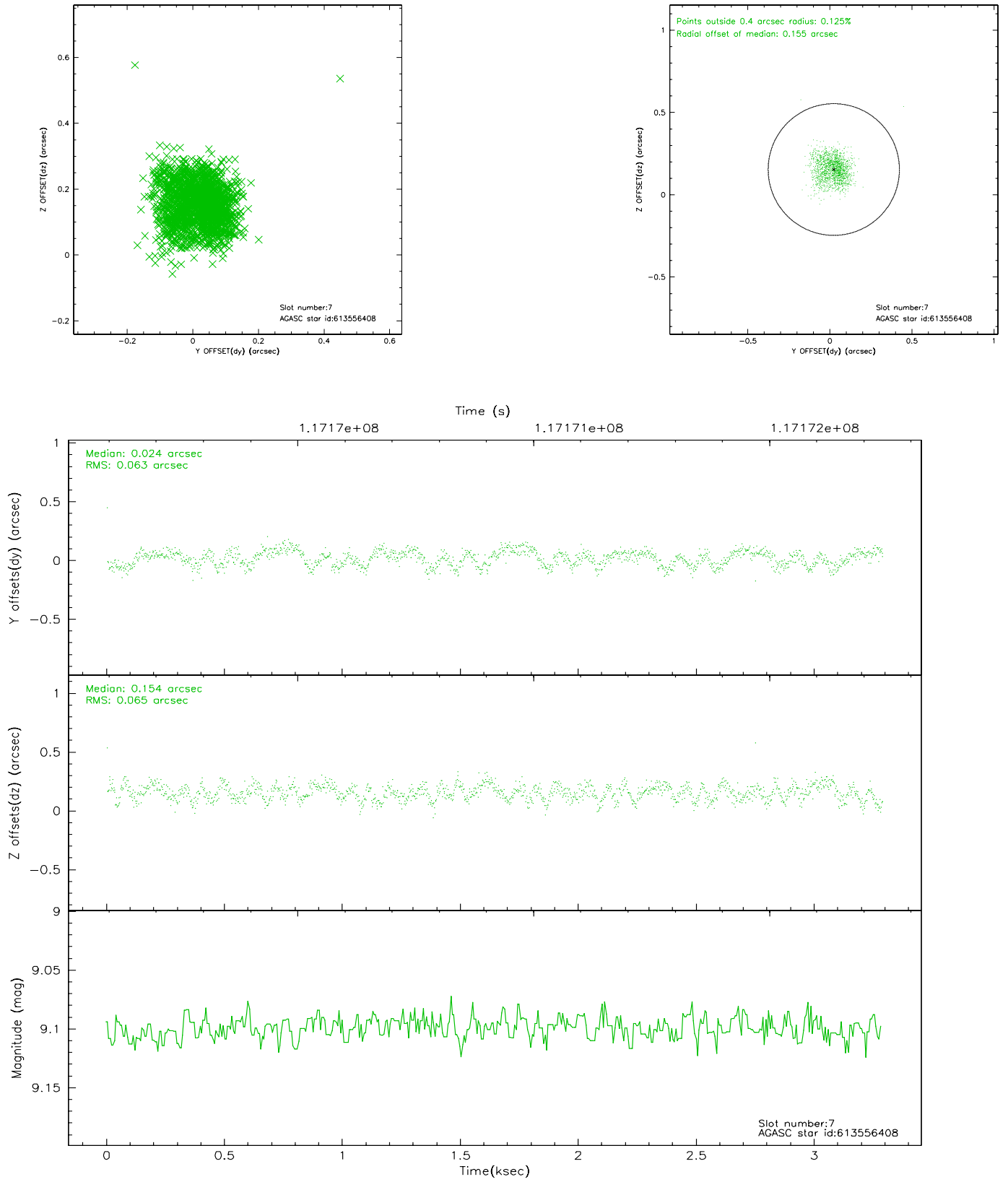
2.4.3 Slot 5



2.4.4 Slot 6

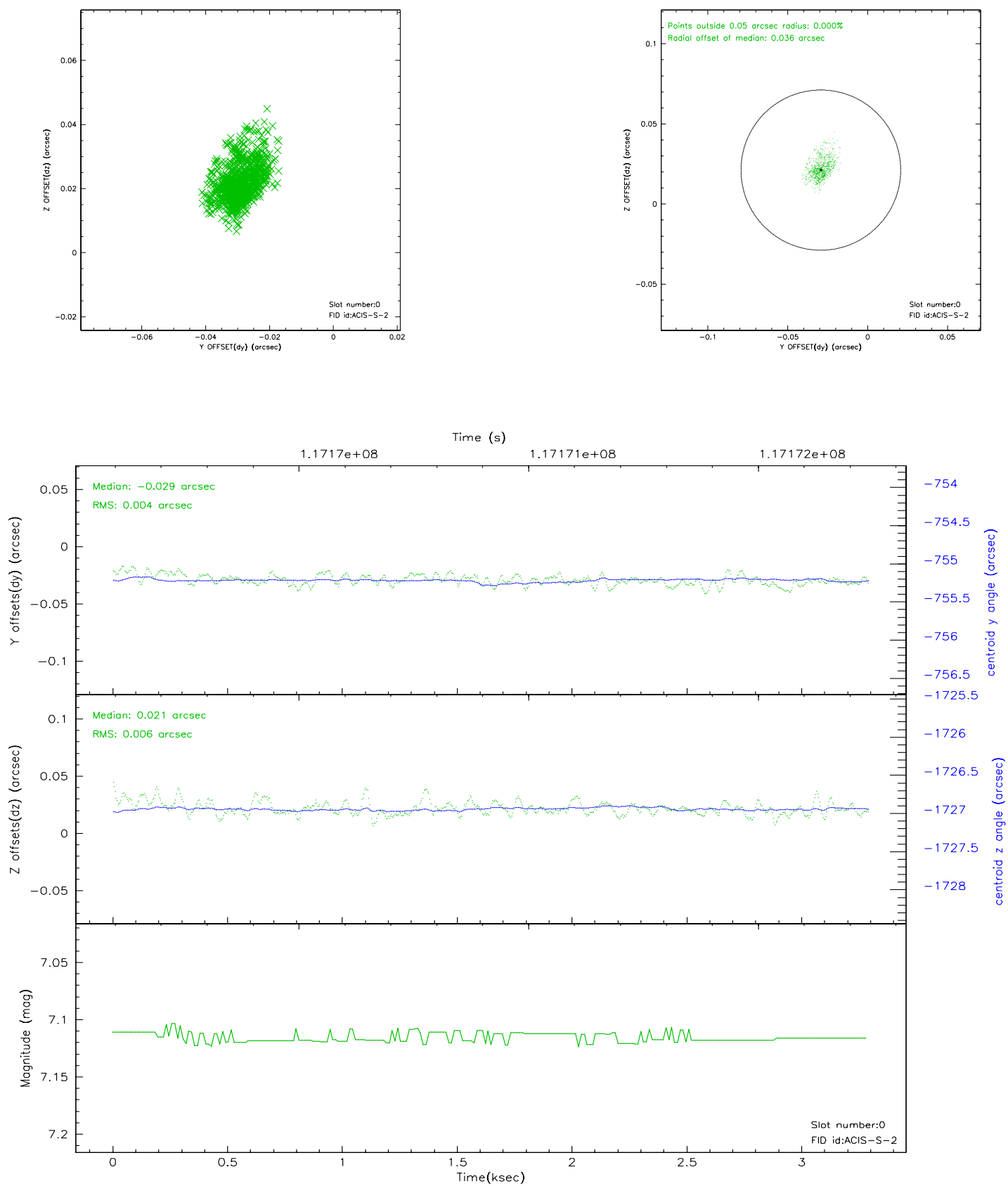


2.4.5 Slot 7

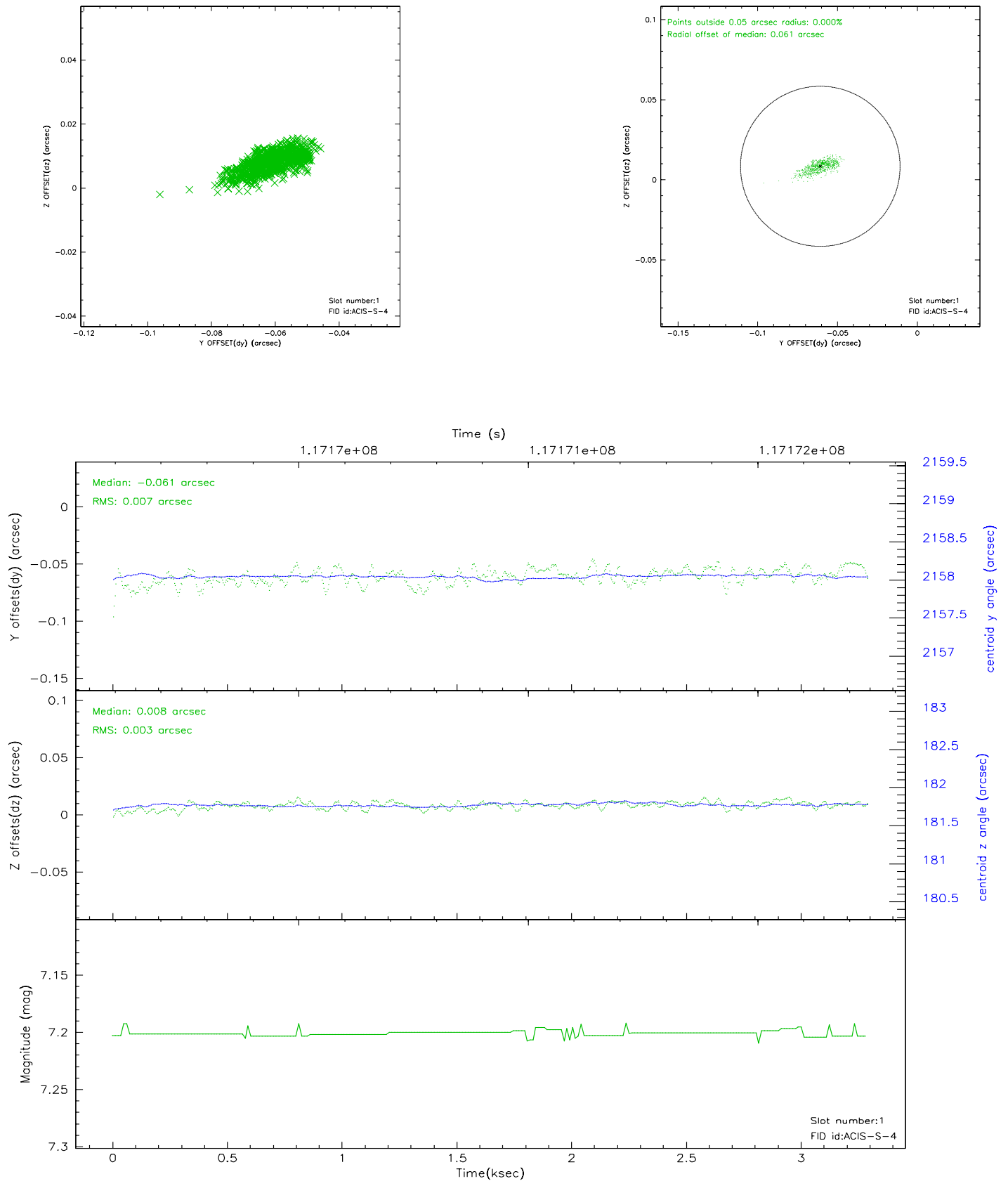


2.5 FID Slots

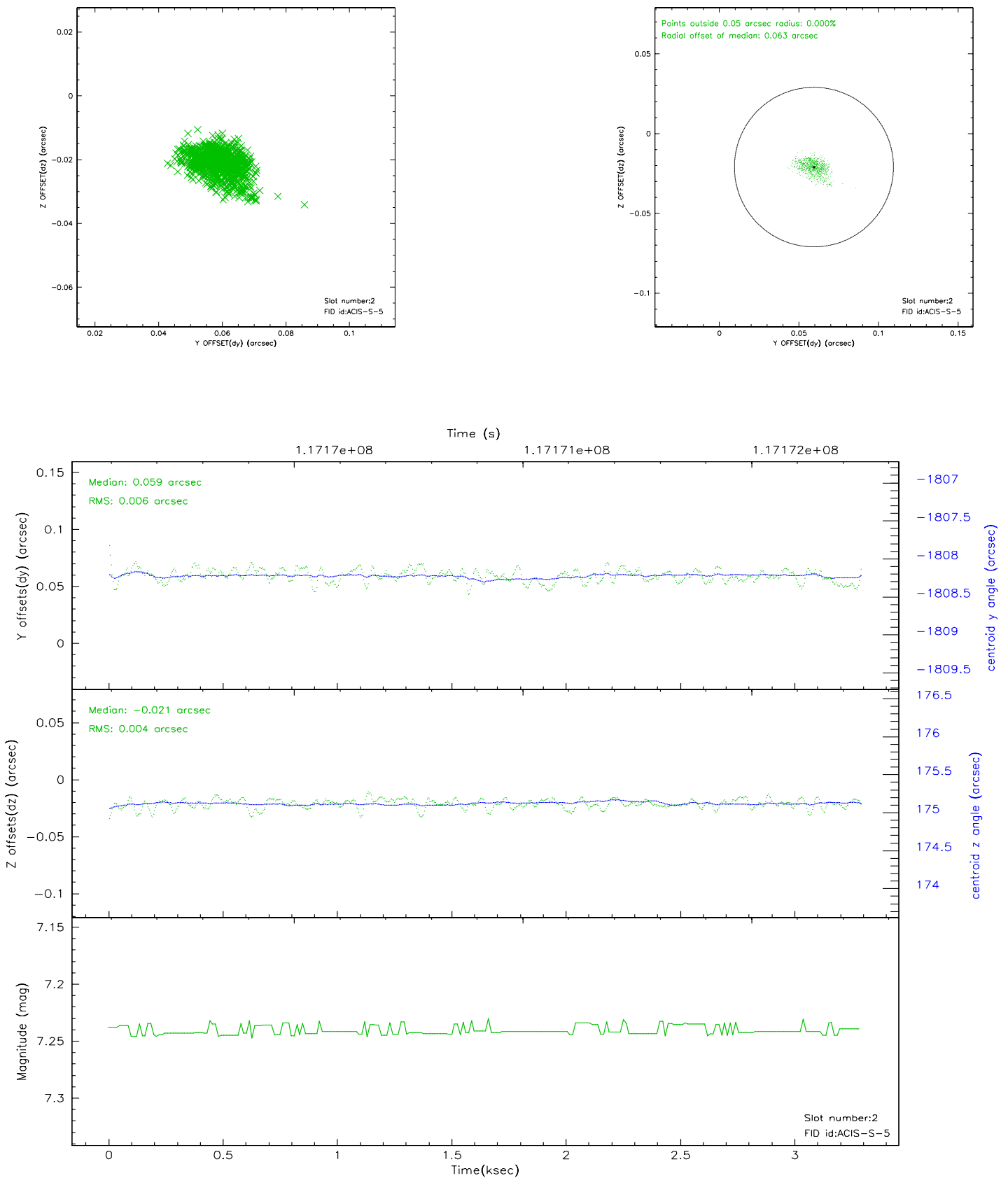
2.5.1 Slot 0



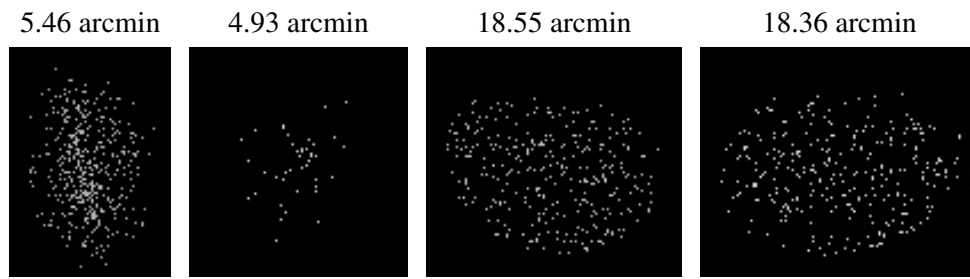
2.5.2 Slot 1



2.5.3 Slot 2



3 Point Sources



A Summary

A.1 Status

V&V Scientist	Beth Sundheim
V&V Date (YYYY-MM-DD)	2007.01.04
V&V Edition	1
V&V Disposition and Status	OK
V&V Charge Time	2.716

A.2 Comments