

# V&V Reference Report

## L2 ASCDS Version : 7.6.10

Observation 2178 - L2 Version 001  
Chandra X-Ray Center

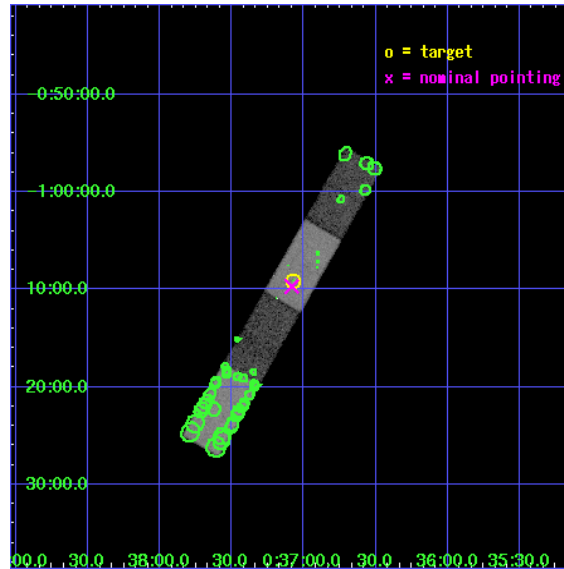
L2 Processing Date : Jun 14 2007

## Contents

<b>1</b>	<b>Front</b>	<b>2</b>
<b>2</b>	<b>OBI</b>	<b>3</b>
2.1	OBI . . . . .	3
2.1.1	Images . . . . .	3
2.1.2	Bias . . . . .	3
2.1.3	Parameters . . . . .	4
2.1.4	Events . . . . .	4
2.2	Compared Parameters . . . . .	5
2.3	Aspect . . . . .	6
2.4	Star Slots . . . . .	9
2.4.1	Slot 3 . . . . .	9
2.4.2	Slot 4 . . . . .	10
2.4.3	Slot 5 . . . . .	11
2.4.4	Slot 6 . . . . .	12
2.4.5	Slot 7 . . . . .	13
2.5	FID Slots . . . . .	14
2.5.1	Slot 0 . . . . .	14
2.5.2	Slot 1 . . . . .	15
2.5.3	Slot 2 . . . . .	16
<b>3</b>	<b>Point Sources</b>	<b>17</b>
<b>A</b>	<b>Summary</b>	<b>18</b>
A.1	Status . . . . .	18
A.2	Comments . . . . .	18

# 1 Front

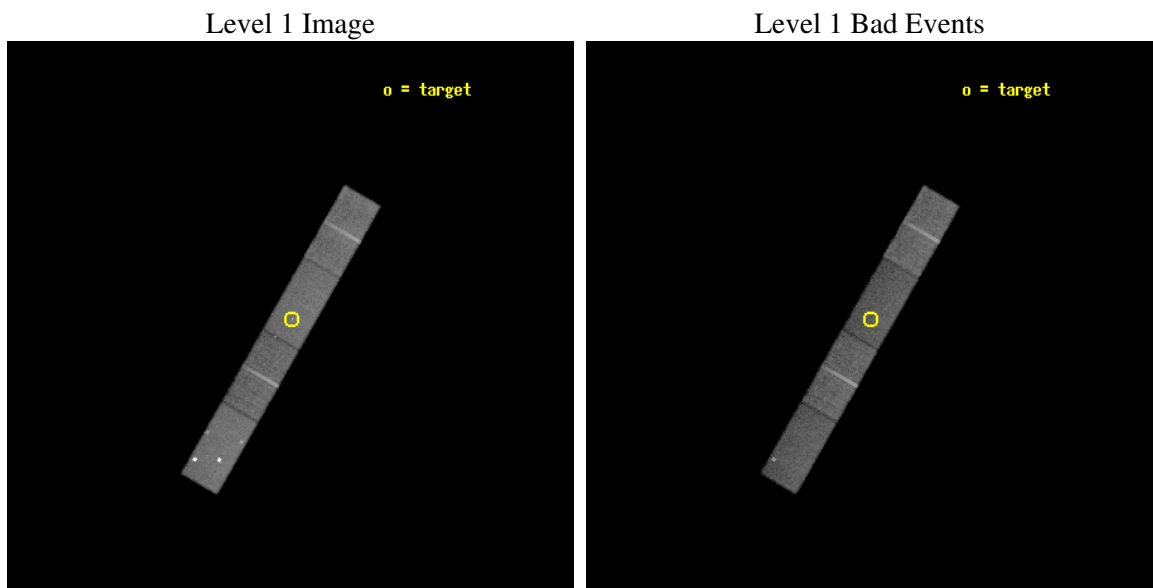
seq_num	700368
obs_id	2178
title	SYNCHROTRON SELF-COMPTON X-RAYS FROM OPTICAL JETS IN ACTIVE GALACTIC NUCLEI
observer	Prof Mark Birkinshaw
object	3C15
dtcycle	0
cycle	P
ra_targ	9.2675
dec_targ	-1.15225
ra_nom	9.2707852356054
dec_nom	-1.1615334829255
roll_nom	299.90833844307
revision	2
ontime	28179.2000494
livetime	27514.956625914
ontime5	28179.2000494
ontime6	28179.2000494
ontime7	28179.2000494
ontime8	28179.2000494
l2events	121616



## 2 OBI

### 2.1 OBI

#### 2.1.1 Images



#### 2.1.2 Bias

Chip 5

Chip 6

Chip 7



Chip 8



### 2.1.3 Parameters

obi_num	0
ascdsver	7.6.10
caldbver	3.4.0
date	2007-06-14T13:23:00
revision	2

sched_exp_time	28000.000000
ontime	28179.2000494
ontime5	28179.2000494
ontime6	28179.2000494
ontime7	28179.2000494
ontime8	28179.2000494
l1events	487296

### 2.1.4 Events

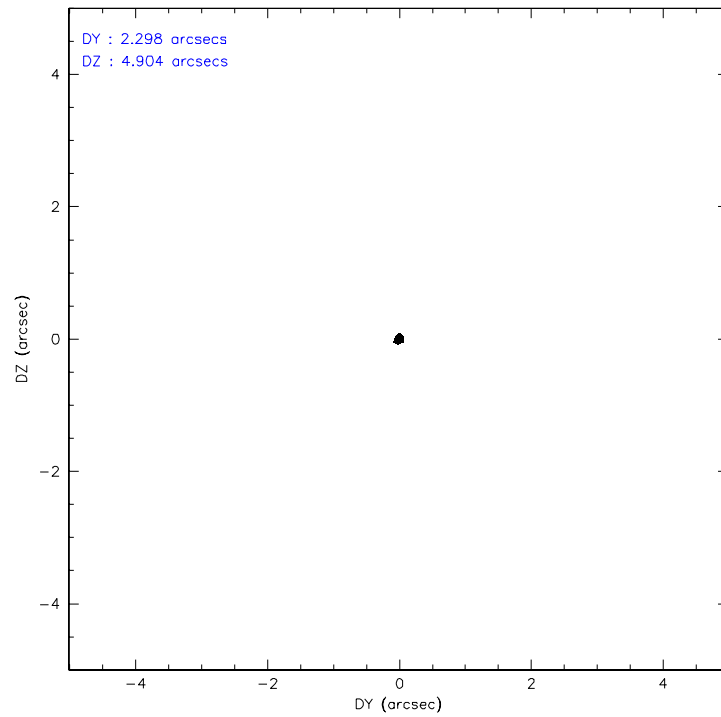
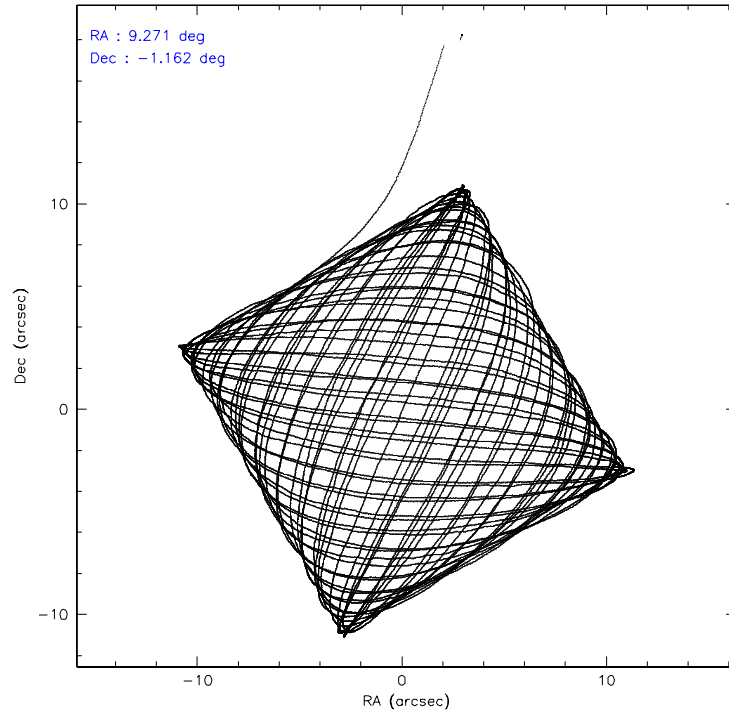
	ccd 5	ccd 6	ccd 7	ccd 8
level 1 events	149573	99639	114363	123721
rejected events	67404	88547	64110	101033
rejected %	45%	88%	56%	81%

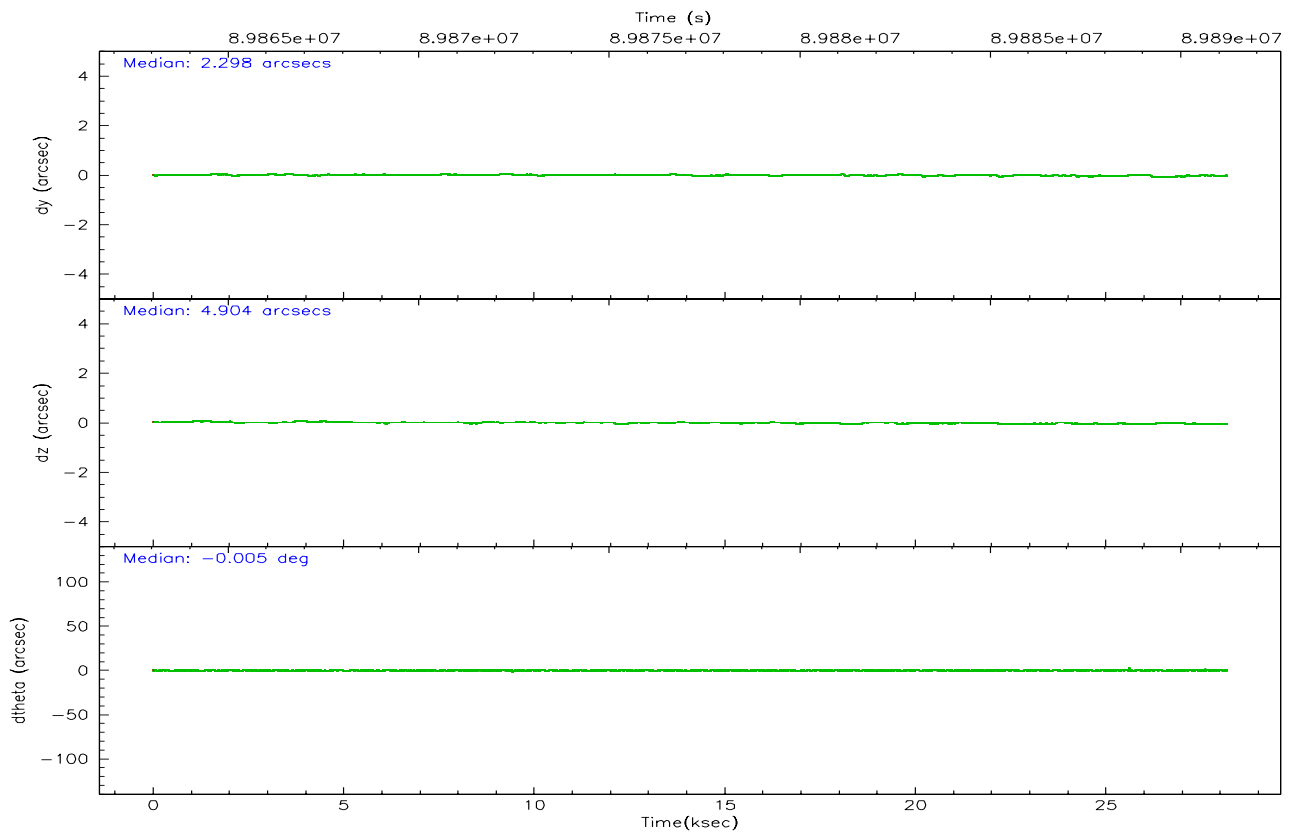
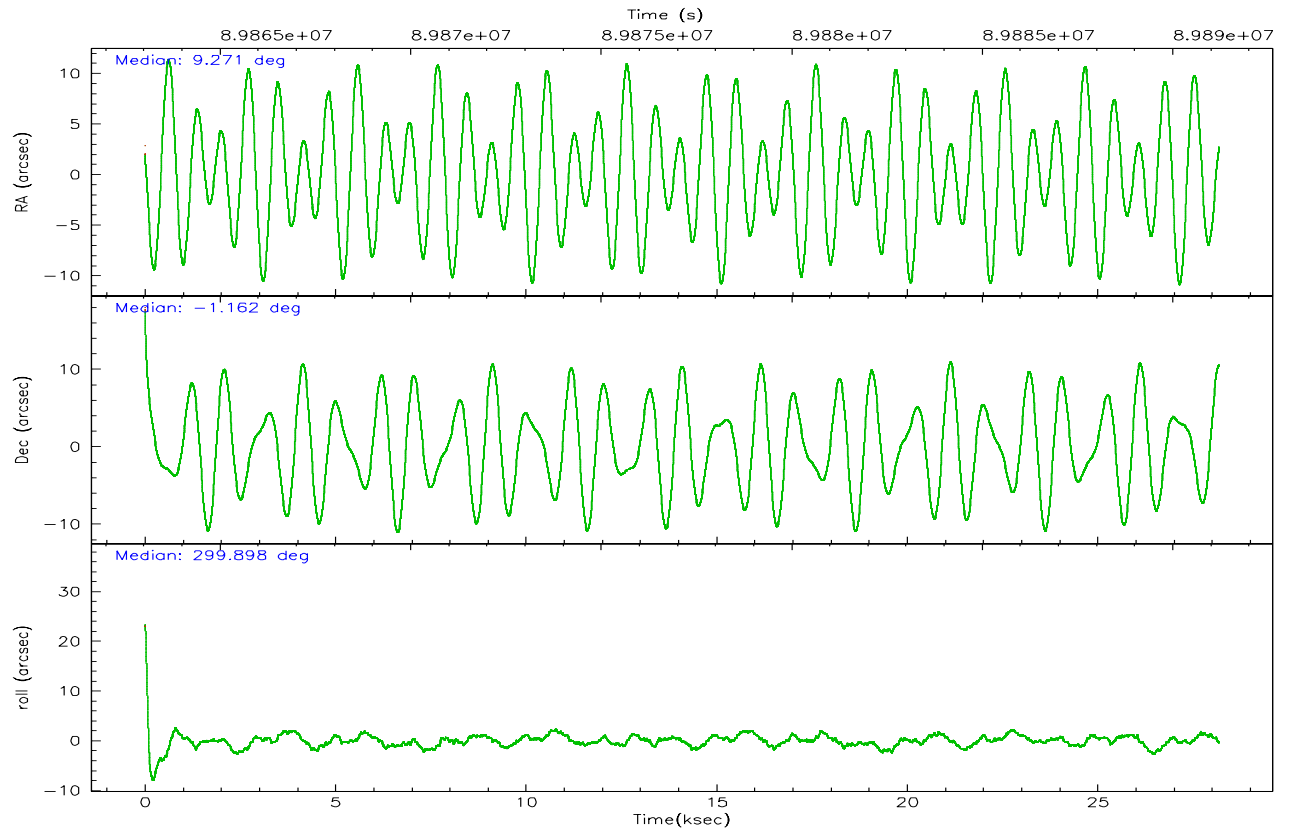
	ccd 5	ccd 6	ccd 7	ccd 8
grade 0 events	26123	4649	5651	6985
	17%	4%	4%	5%
grade 1 events	1210	32	102	64
	0%	0%	0%	0%
grade 2 events	22982	2075	10281	4829
	15%	2%	8%	3%
grade 3 events	3342	1368	5137	2714
	2%	1%	4%	2%
grade 4 events	3062	1325	5049	2474
	2%	1%	4%	1%
grade 5 events	10006	3563	10636	4493
	6%	3%	9%	3%
grade 6 events	28507	1930	25153	6118
	19%	1%	21%	4%
grade 7 events	54341	84697	52354	96044
	36%	85%	45%	77%

## 2.2 Compared Parameters

Parameter	Planned	Actual	Parameter	Planned	Actual
Instrument	ACIS	ACIS	Obspar format version number	6	6
Detector	ACIS-5678	ACIS-5678	Obspar file type	PREDICTED	ACTUAL
Grating	NONE	NONE	Obspar update status	NONE	UPDATED
Data mode	FAINT	FAINT	Number of optional ACIS chips dropped	0	0
Observation mode	POINTING	POINTING	On-chip summing requested	N	N
Pointing RA	9.247037	9.270785235605379	Subarray requested	1/2	1/2
Pointing Dec	-1.148013	-1.161533482925456	Subarray start row	0	257
Pointing Roll	299.751217	299.9083384430746	Subarray row count	1024	512
SIM focus pos (mm)	-0.684267	-0.6828225247311905	Alternating exposures requested	N	N
SIM defocus (mm)	0	0.001444936568705701	Primary exposure time	0.000000	1.7
SIM translation stage pos (mm)	-190.132523	-190.1400660498719			
SIM translation stage offset (mm)	0	0.00754346686406393			
Observation start time	89863212.184000	89862127.216777			
Observation start date	2000-11-06T01:59:08	2000-11-06T01:42:07			
Observation end time	89891212.184000	89891943.955405			
Observation end date	2000-11-06T09:45:48	2000-11-06T09:59:03			
Read mode	TIMED	TIMED			

## 2.3 Aspect





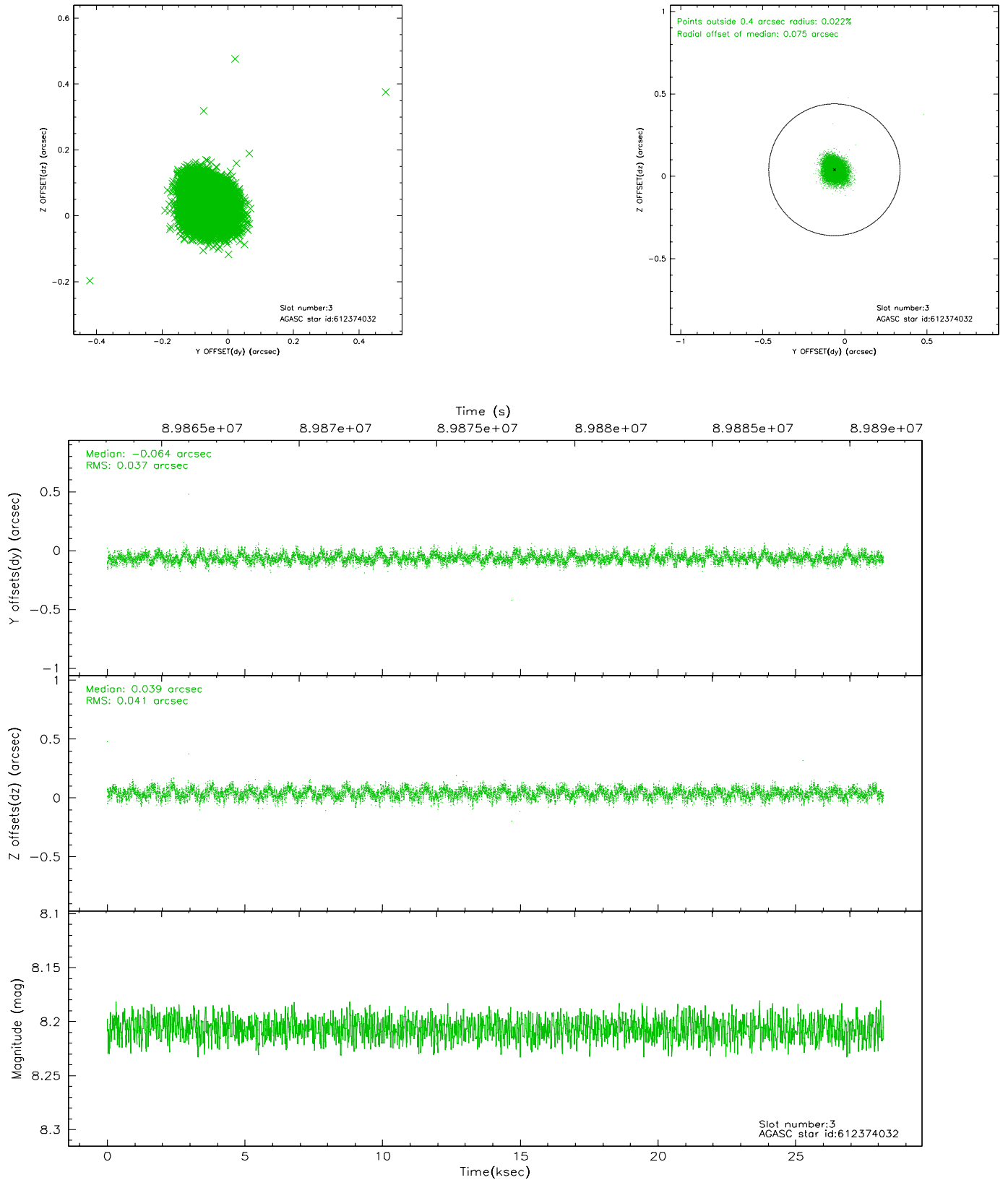
### Slot Statistics

slot	status	id	mag	n_pts	med_dy	med_dz	dr1	dr2	ra	dec	mean_y	mean_z
0	FID	ACIS-S-2	7.12	6873	-0.031	0.009	0.006	0.010	0.000000	0.000000	-754.92	-1726.01
1	FID	ACIS-S-4	7.21	6873	-0.039	0.013	0.005	0.008	0.000000	0.000000	2158.28	182.43
2	FID	ACIS-S-5	7.24	6875	0.040	-0.013	0.006	0.010	0.000000	0.000000	-1807.61	176.11
3	GUIDE	612374032	8.21	13745	-0.064	0.039	0.058	0.092	8.955142	-0.898357	-1301.80	-466.40
4	GUIDE	612376112	8.83	13744	0.051	-0.049	0.098	0.171	8.733318	-1.310240	-410.17	-1895.21
5	GUIDE	612370560	9.35	13743	0.004	-0.073	0.080	0.129	8.872997	-1.086508	-860.24	-1059.35
6	GUIDE	612374608	9.49	13742	0.075	0.045	0.088	0.140	9.290153	-0.866218	-803.98	637.98
7	GUIDE	612374896	9.56	13745	-0.068	0.026	0.079	0.130	9.101748	-0.582076	-2028.75	556.68

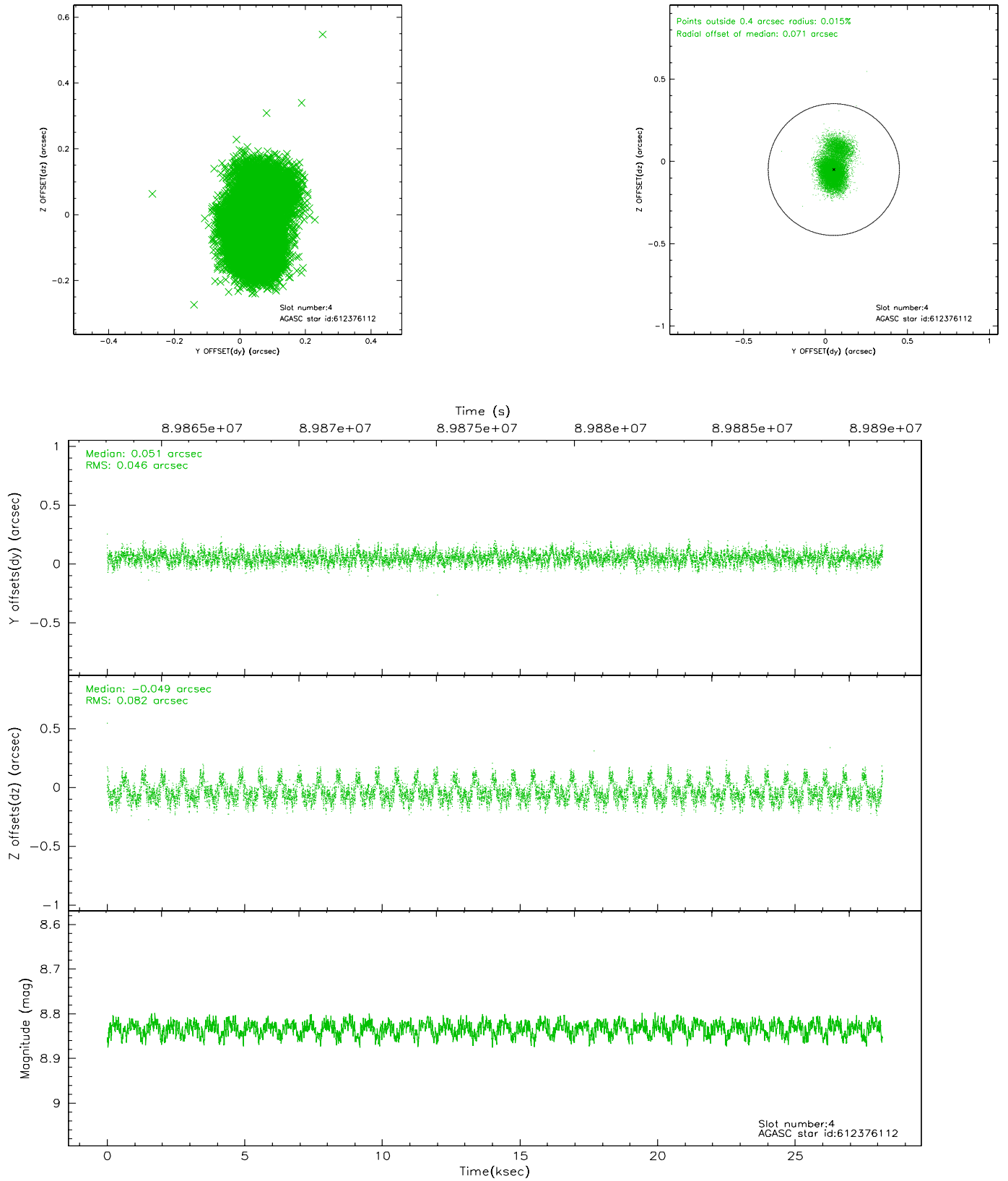


## 2.4 Star Slots

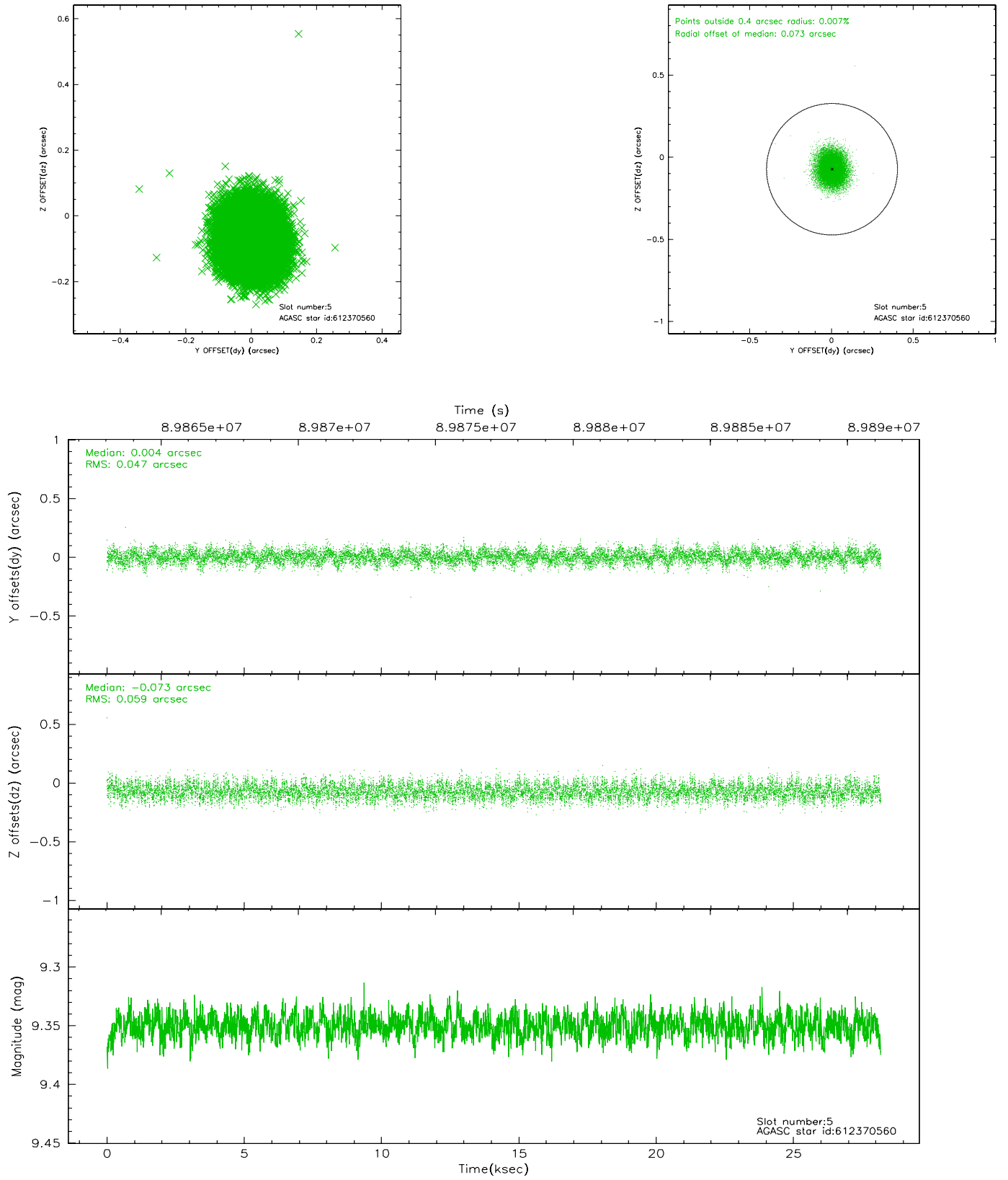
### 2.4.1 Slot 3



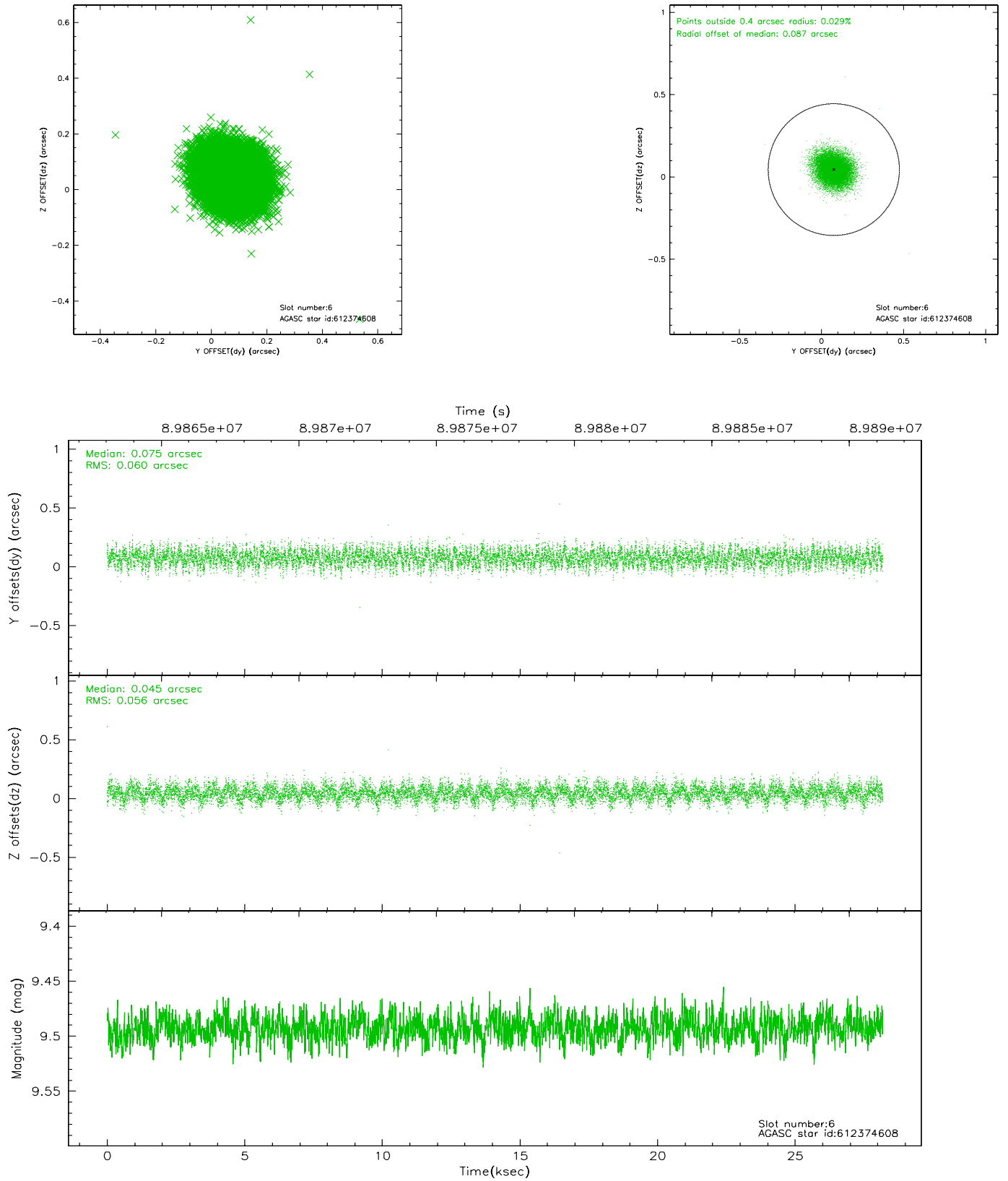
## 2.4.2 Slot 4



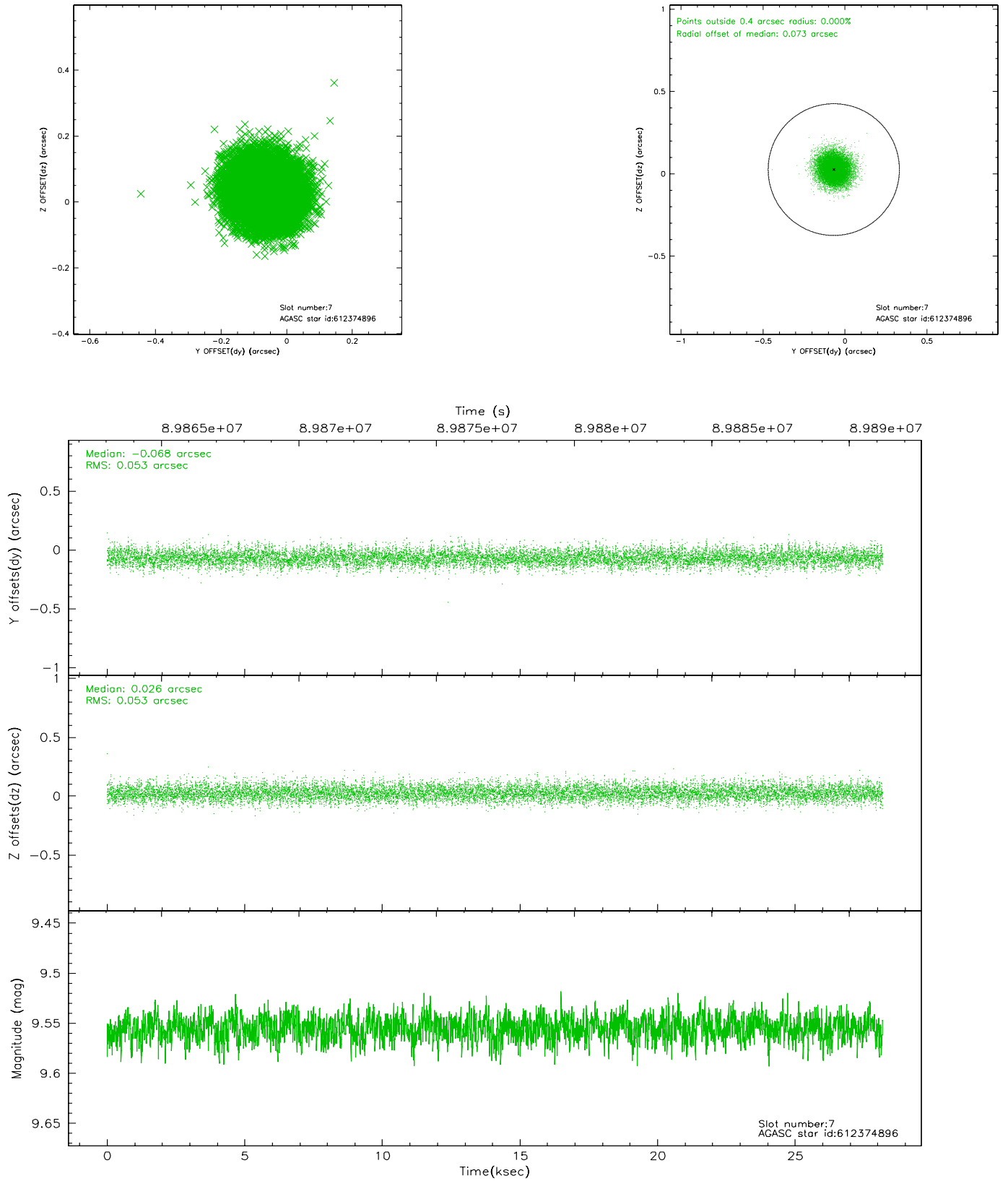
### 2.4.3 Slot 5



## 2.4.4 Slot 6

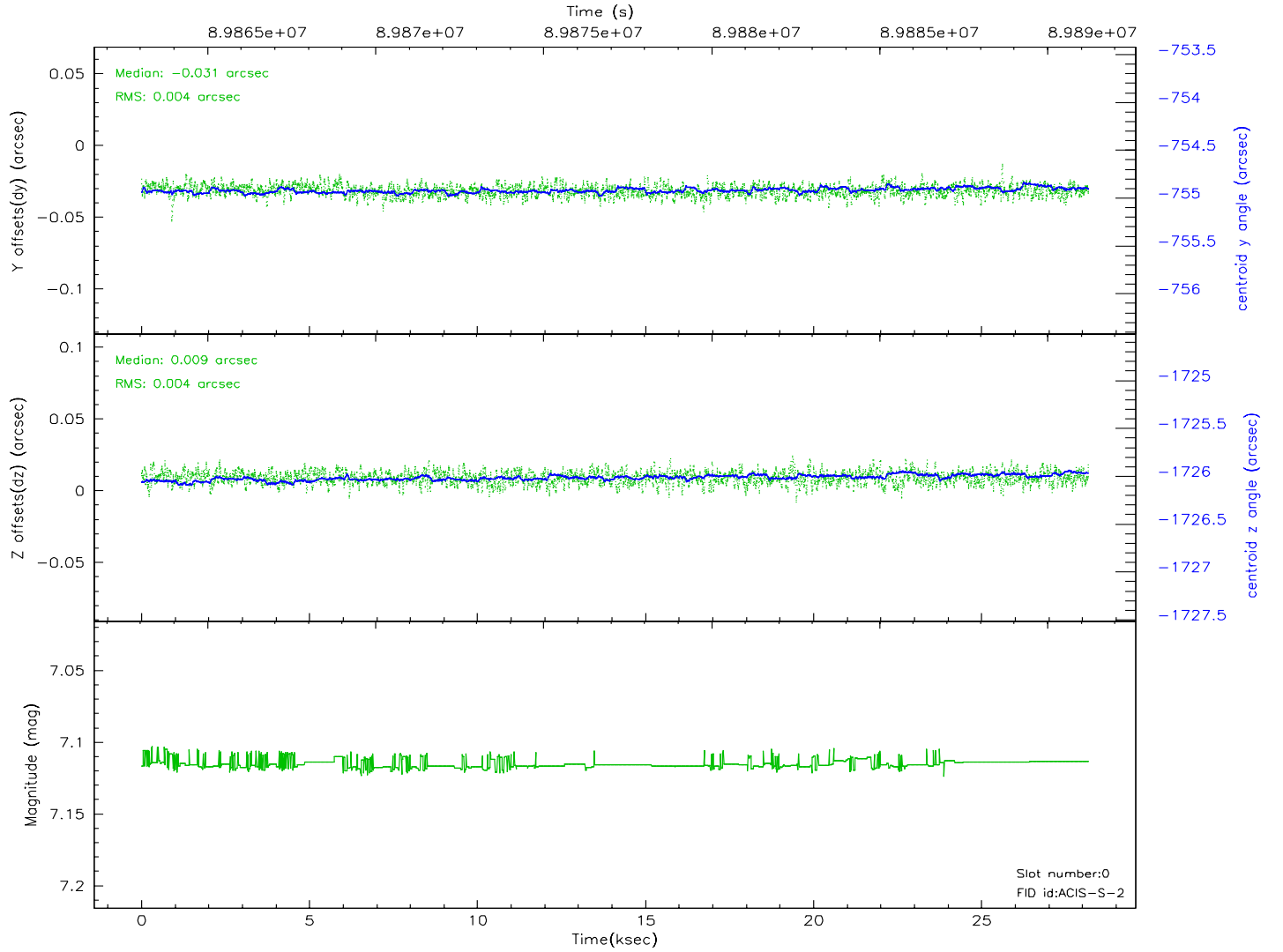
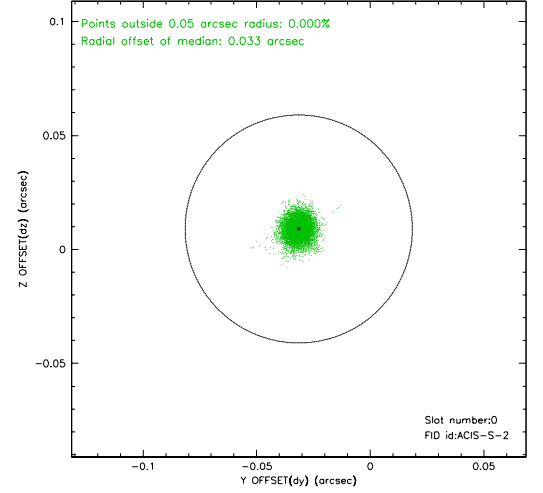
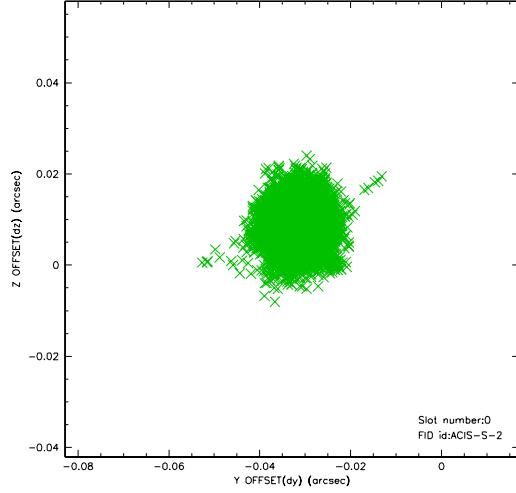


## 2.4.5 Slot 7

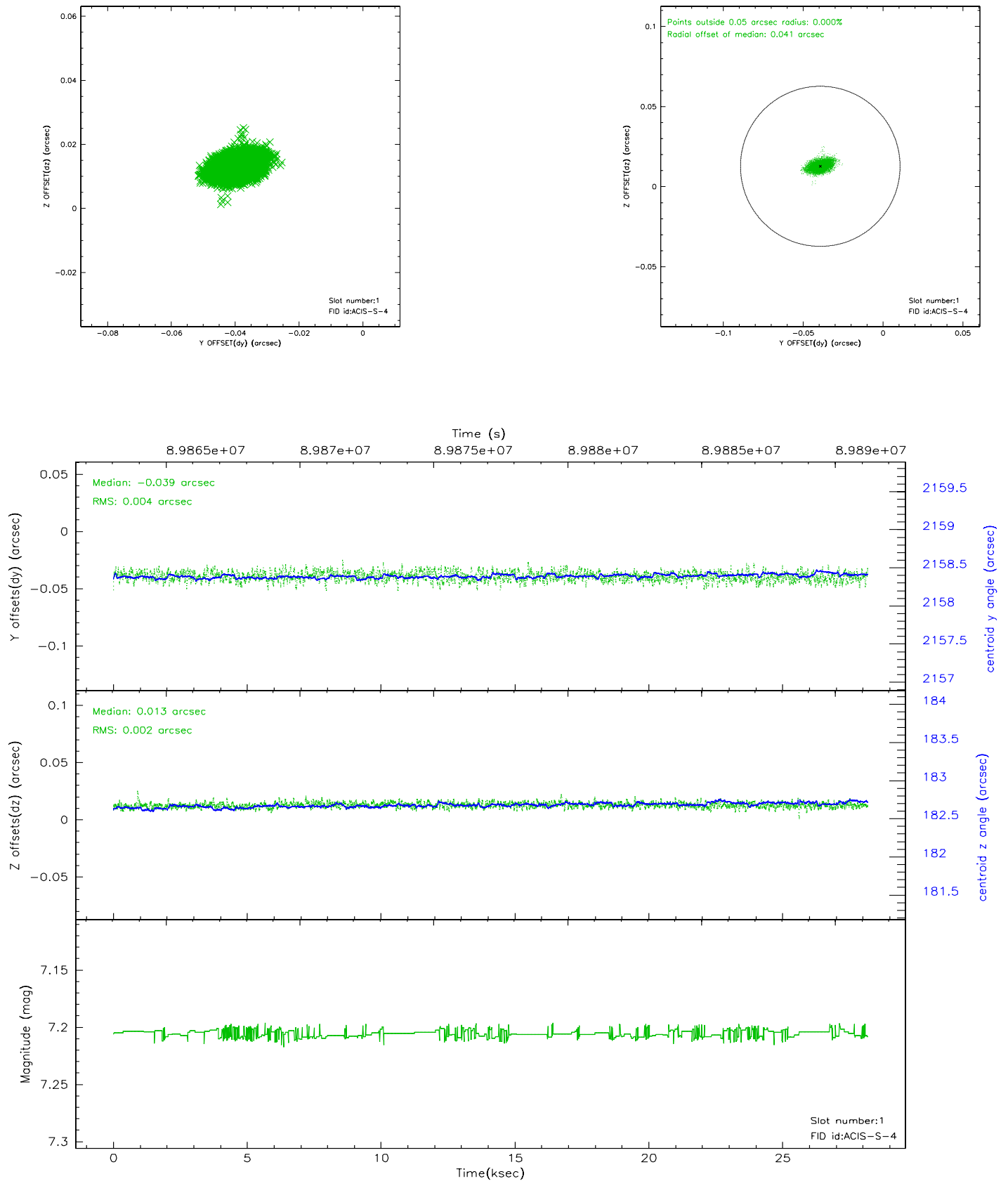


## 2.5 FID Slots

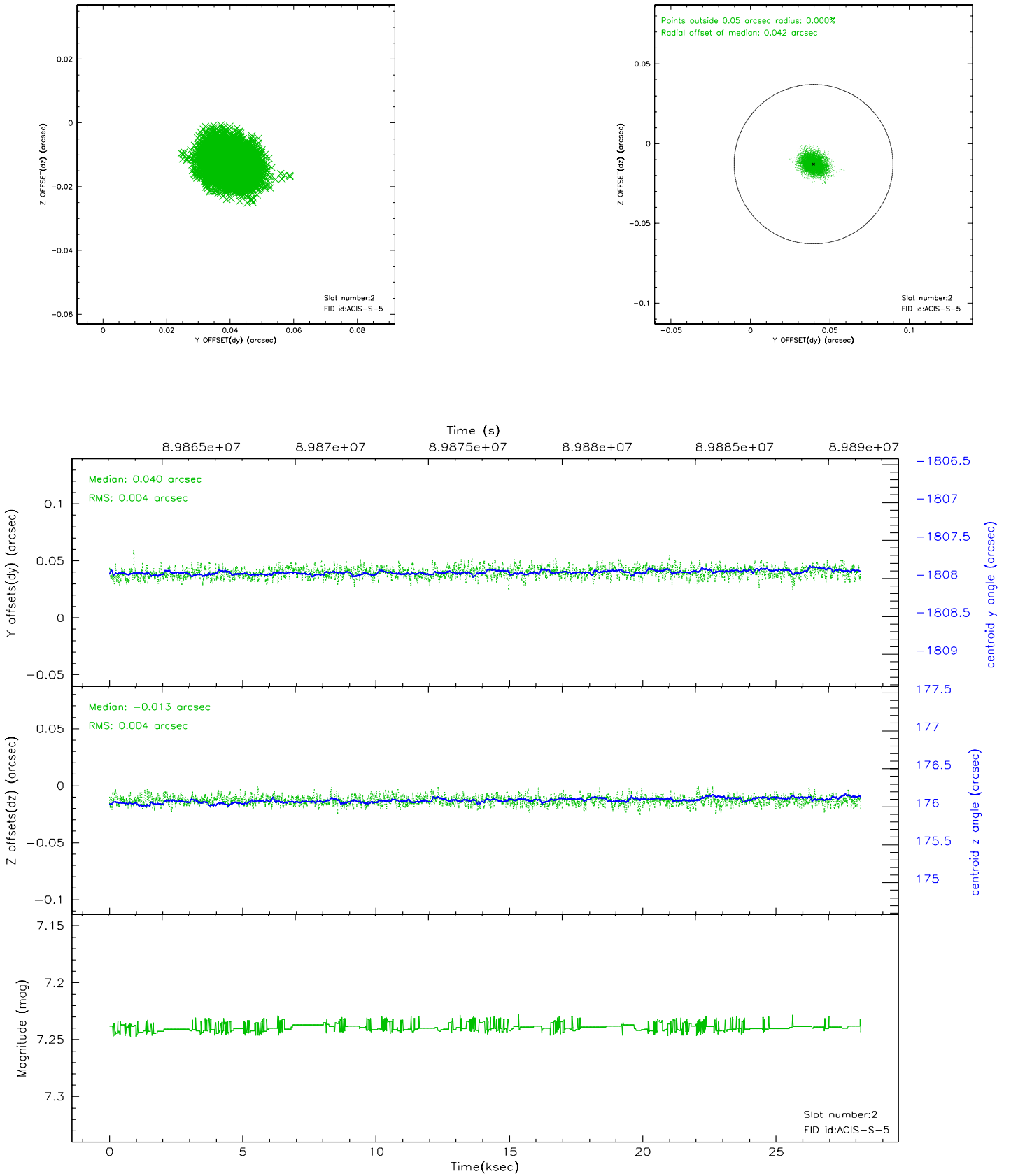
### 2.5.1 Slot 0



## 2.5.2 Slot 1

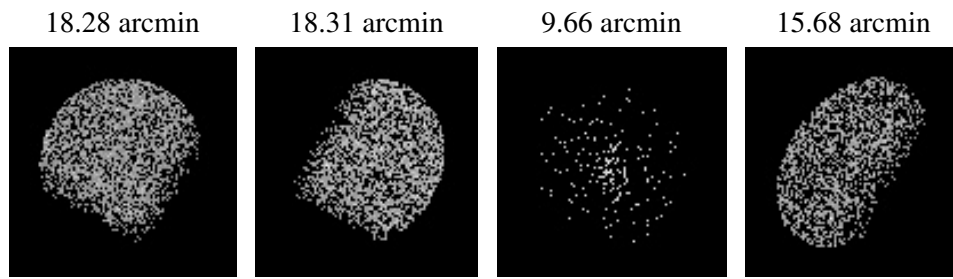


### 2.5.3 Slot 2





### 3 Point Sources



## A Summary

### A.1 Status

V&V Scientist	Jen Lauer
V&V Date (YYYY-MM-DD)	2007.06.14
V&V Edition	1
V&V Disposition and Status	OK
V&V Charge Time	28.179

### A.2 Comments