

V&V Reference Report

L2 ASCDS Version : 8.4.5

Observation 2173 - L2 Version 3
Chandra X-Ray Center

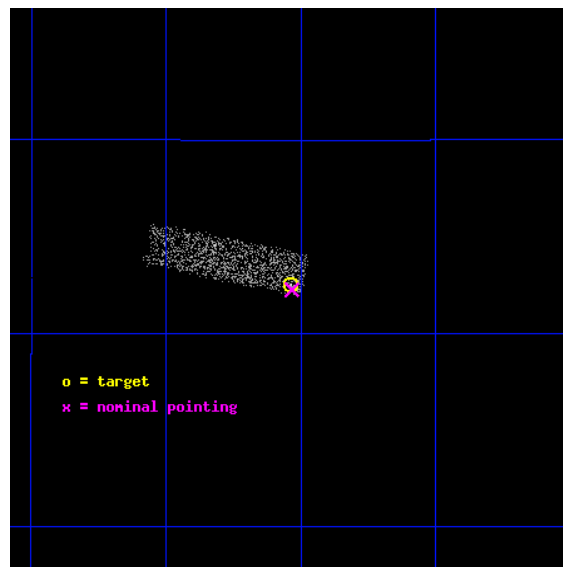
L2 Processing Date : Sep 28 2012

Contents

1	Front	2
2	OBI	3
2.1	OBI	3
2.1.1	Images	3
2.1.2	Bias	3
2.1.3	Parameters	4
2.1.4	Events	4
2.2	Compared Parameters	5
2.3	Aspect	6
2.4	Star Slots	9
2.4.1	Slot 3	9
2.4.2	Slot 4	10
2.4.3	Slot 5	11
2.4.4	Slot 6	12
2.4.5	Slot 7	13
2.5	FID Slots	14
2.5.1	Slot 0	14
2.5.2	Slot 1	15
2.5.3	Slot 2	16
A	Summary	17
A.1	Status	17
A.2	Comments	17

1 Front

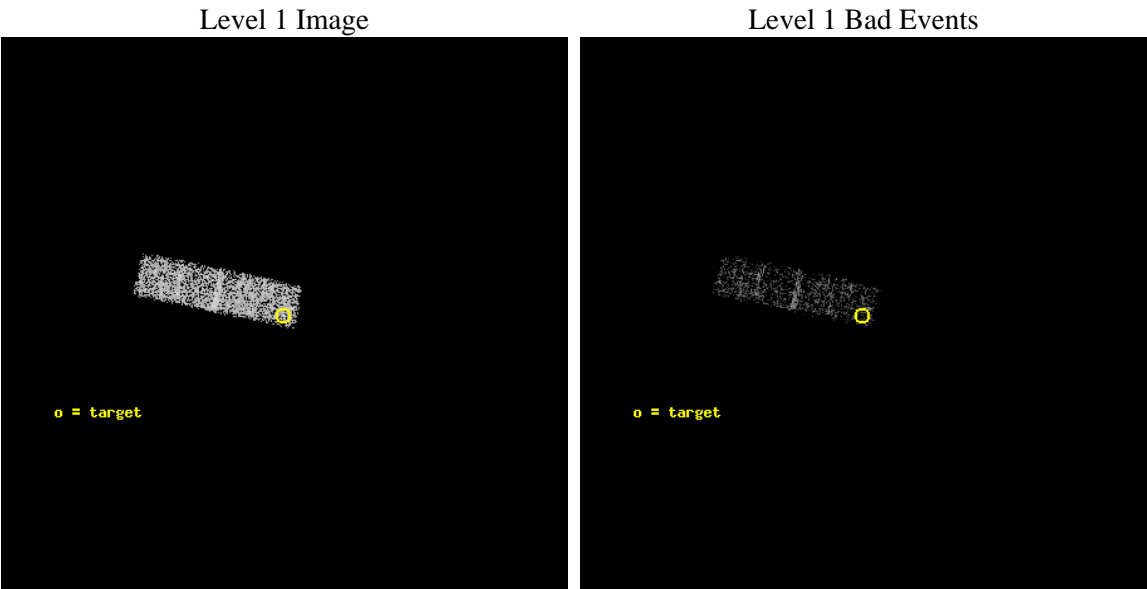
seq_num	700363	Sequence number
obs_id	2173	Observation id
title	RED QUASARS AND THE X-RAY BACKGROUND	Proposal title
observer	Dr. Belinda Wilkes	Principal investigator
object	2MASSJ222202+1952	Source name
dtcycle	0	
cycle	P	events from which exps? Prim/Second/Both
ra_targ	335.509167	Observer's specified target RA [deg]
dec_targ	19.875417	Observer's specified target Dec [deg]
ra_nom	335.50825824567	Nominal RA [deg]
dec_nom	19.870979231955	Nominal Dec [deg]
roll_nom	281.75022963955	Nominal Roll [deg]
revision	3	Processing version of data
ontime	2534.3999905735	Sum of GTIs [s]
livetime	2410.7295639432	Livetime [s]
ontime3	2534.3999905735	Sum of GTIs [s]
l2events	1658	Number of level 2 events



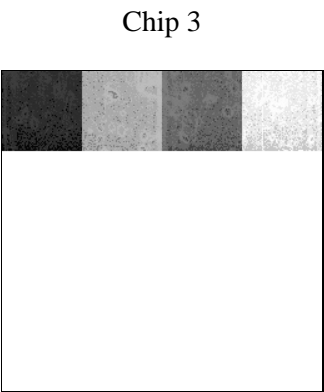
2 OBI

2.1 OBI

2.1.1 Images



2.1.2 Bias



2.1.3 Parameters

obi_num	5	Obi number	sched_exp_time	2200.000000	[s] Scheduled observation exposure time
ascdsver	8.4.5	Processing system revision	ontime	2534.3999905735	Sum of GTIs [s]
caldsver	4.5.2	 	ontime3	2534.3999905735	Sum of GTIs [s]
date	2012-09-28T03:48:25	Date and time of file creation	l1events	9442	Number of level 1 events
revision	3	Processing version of data			

2.1.4 Events

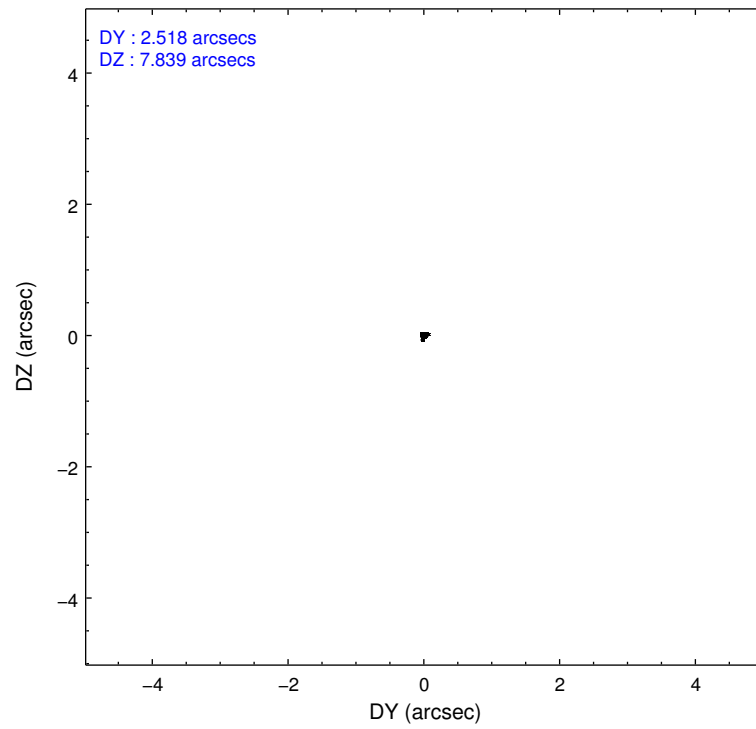
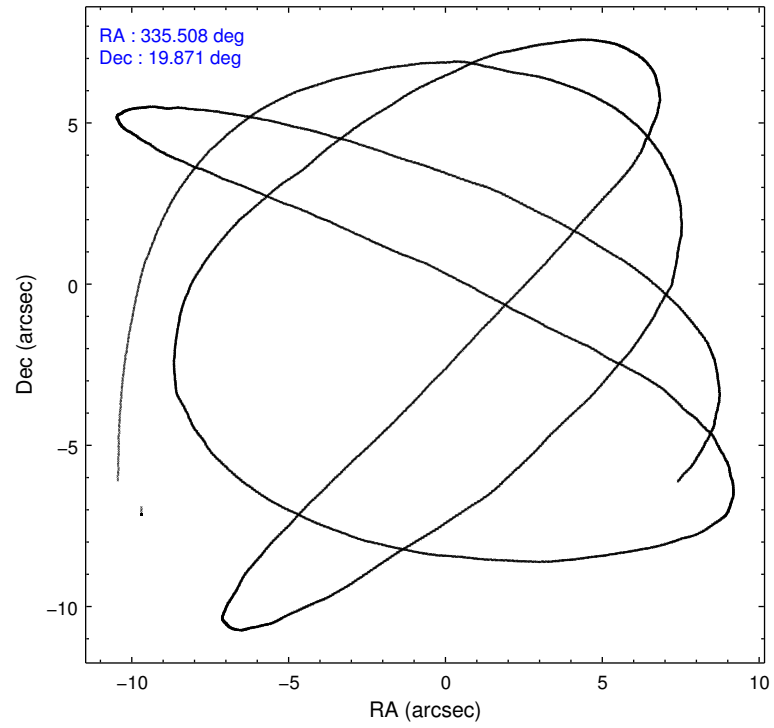
	ccd 3
level 1 events	9442
rejected events	7645
rejected %	80%

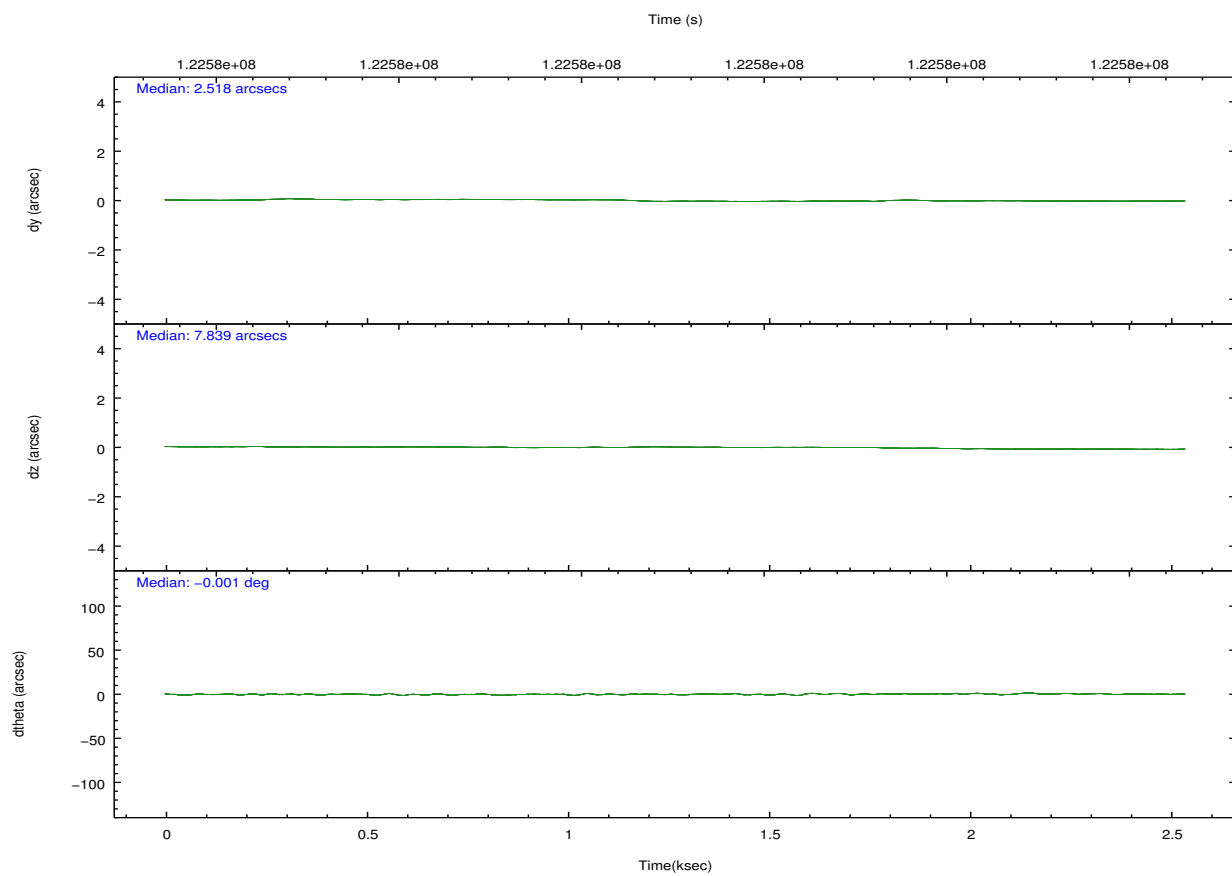
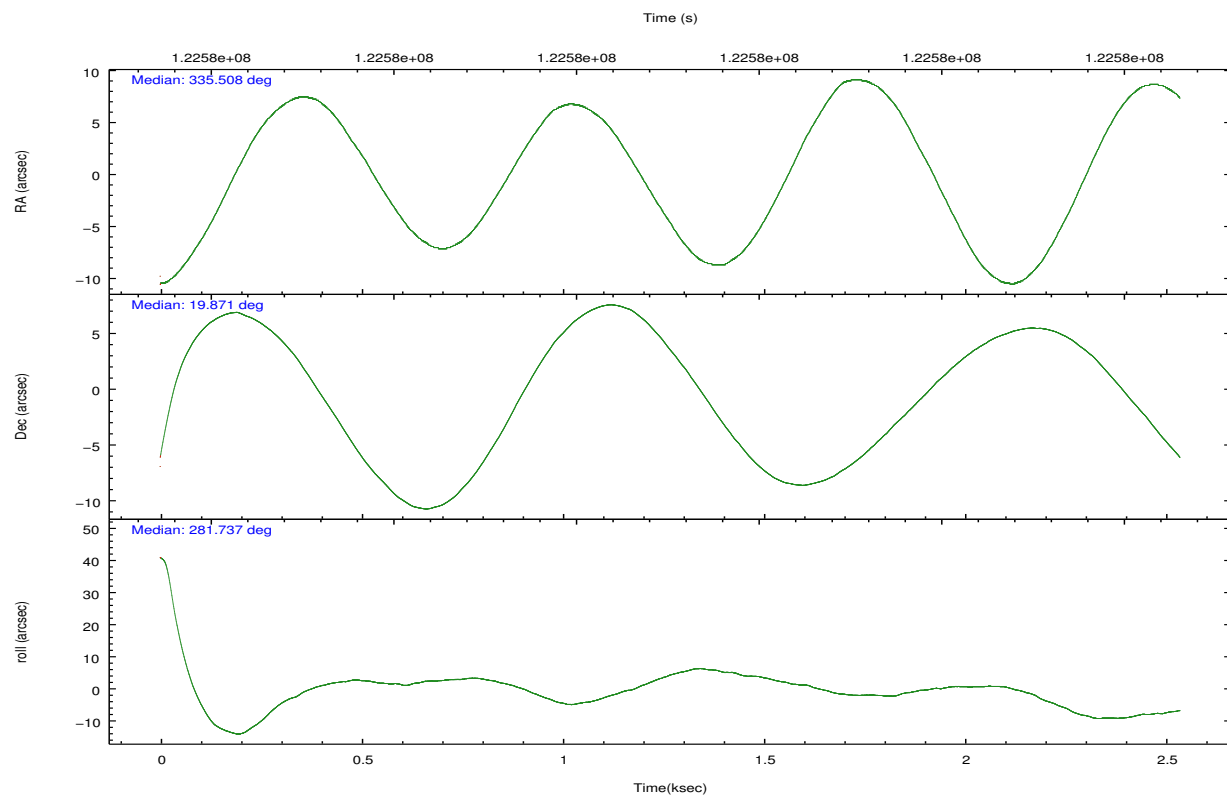
	ccd 3
grade 0 events	822
	8%
grade 1 events	1
	0%
grade 2 events	569
	6%
grade 3 events	131
	1%
grade 4 events	141
	1%
grade 5 events	211
	2%
grade 6 events	330
	3%
grade 7 events	7237
	76%

2.2 Compared Parameters

Parameter	Planned	Actual	Parameter	Planned	Actual
Instrument	ACIS	ACIS	Obspar format version number	7	7
Detector	ACIS-3	ACIS-3	Obspar file type	PREDICTED	ACTUAL
Grating	NONE	NONE	Obspar update status	NONE	UPDATED
Data mode	VFAINT	VFAINT	Number of optional ACIS chips dropped	0	0
Observation mode	POINTING	POINTING	On-chip summing requested	N	N
[deg] Pointing RA	335.488728	335.5082582456702	Subarray requested	CUSTOM	1/4
[deg] Pointing Dec	19.891225	19.87097923195479	Subarray start row	769	769
[deg] Pointing Roll	281.547940	281.7502296395498	Subarray row count	256	256
[mm] SIM focus pos	-0.782348	-0.7809083437167272	Alternating exposures requested	N	N
[mm] SIM defocus	0	0.001439871863259334	[s] Primary exposure time	0.000000	0.8
[mm] SIM translation stage pos	-233.592463	-233.5874344608287			
[mm] SIM translation stage offset	0	-0.005018542100998502			
[s] Observation start time (MET)	122578821.184000	122577783.80306			
Observation start date	2001-11-19T17:39:17	2001-11-19T17:23:03			
[s] Observation end time (MET)	122581021.184000	122581615.25321			
Observation end date	2001-11-19T18:15:57	2001-11-19T18:26:55			
Read mode	TIMED	TIMED			

2.3 Aspect



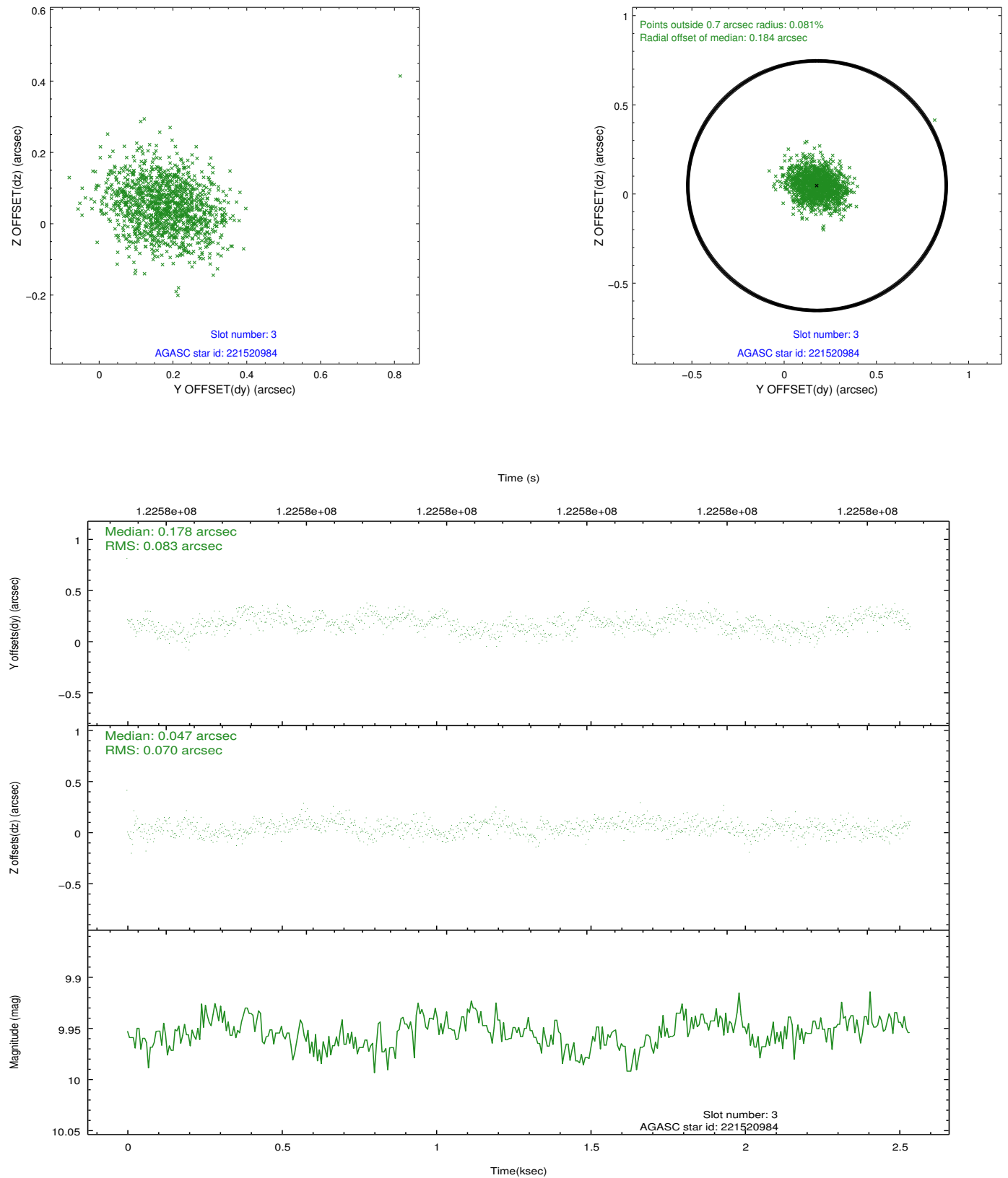


Slot Statistics

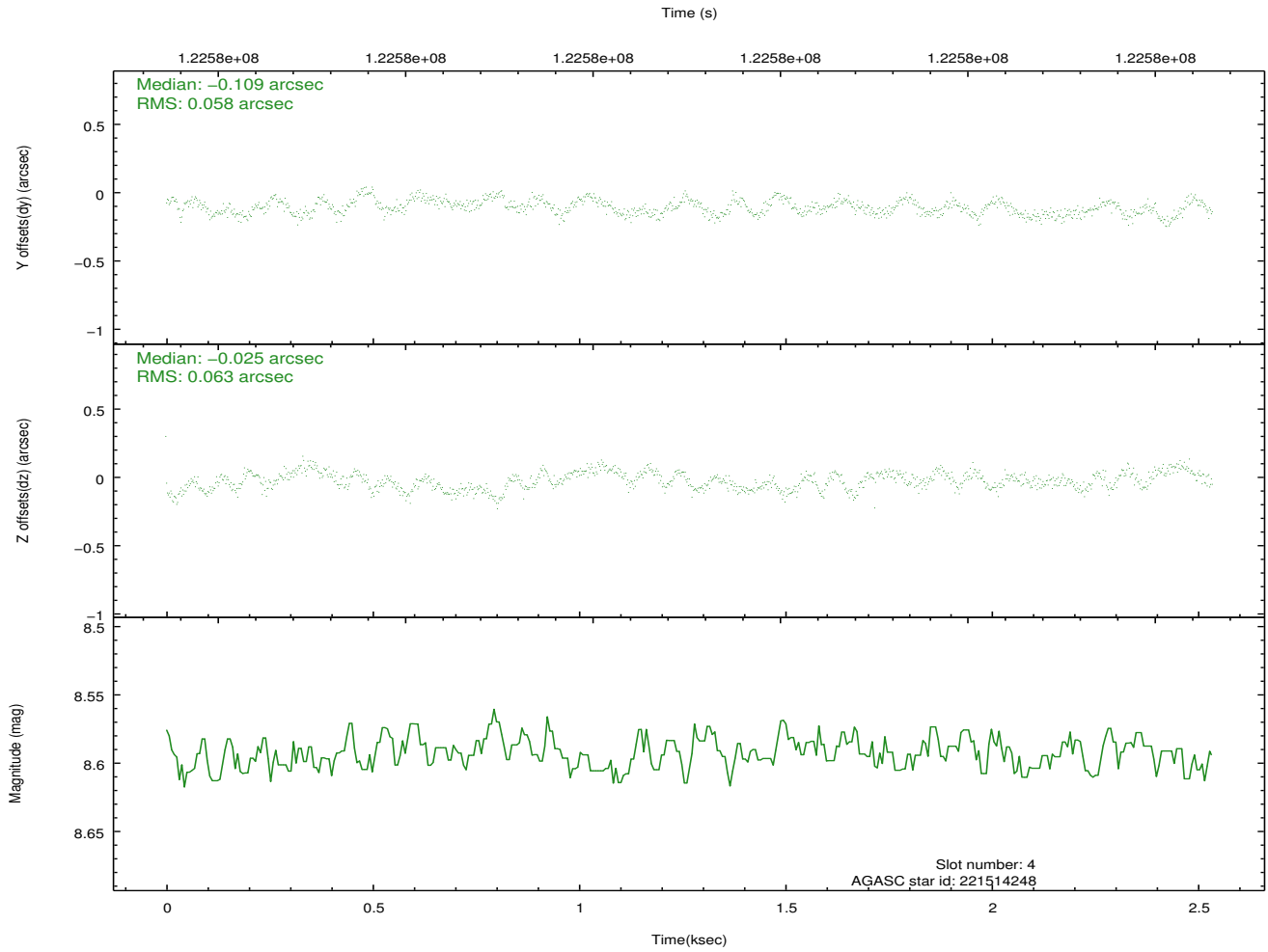
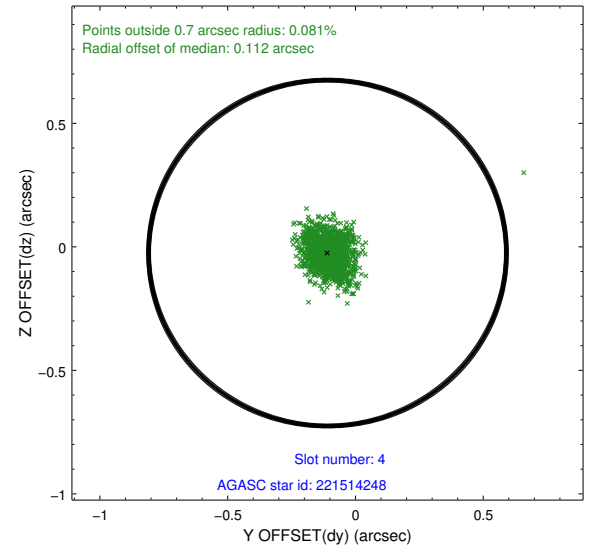
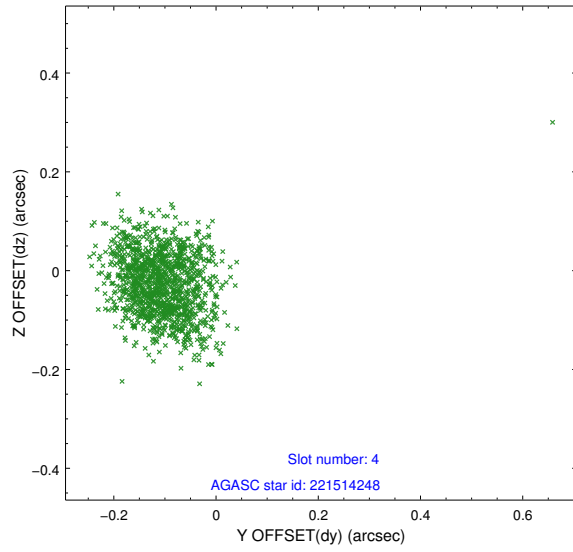
slot	status	id	mag	n_pts	med_dy	med_dz	dr1	dr2	ra	dec	mean_y	mean_z
0	FID	ACIS-I-1	7.24	619	-0.027	0.058	0.006	0.010	0.000000	0.000000	937.24	-831.20
1	FID	ACIS-I-5	7.23	619	-0.024	0.038	0.006	0.011	0.000000	0.000000	-1809.41	1065.05
2	FID	ACIS-I-6	7.26	619	-0.040	-0.026	0.006	0.010	0.000000	0.000000	400.06	1712.34
3	GUIDE	221520984	9.95	1238	0.178	0.047	0.114	0.180	335.753306	19.593324	1231.03	664.49
4	GUIDE	221514248	8.59	1238	-0.109	-0.025	0.089	0.138	334.808098	19.800222	-142.33	-2323.35
5	GUIDE	221515368	10.26	1228	-0.079	-0.012	0.130	0.227	334.817041	20.235054	-1669.80	-1977.01
6	GUIDE	223220768	8.79	1238	-0.126	0.005	0.132	0.208	336.138894	20.276133	-922.94	2427.08
7	GUIDE	221524824	9.70	1237	0.131	-0.019	0.100	0.163	335.185669	19.540573	1031.09	-1258.20

2.4 Star Slots

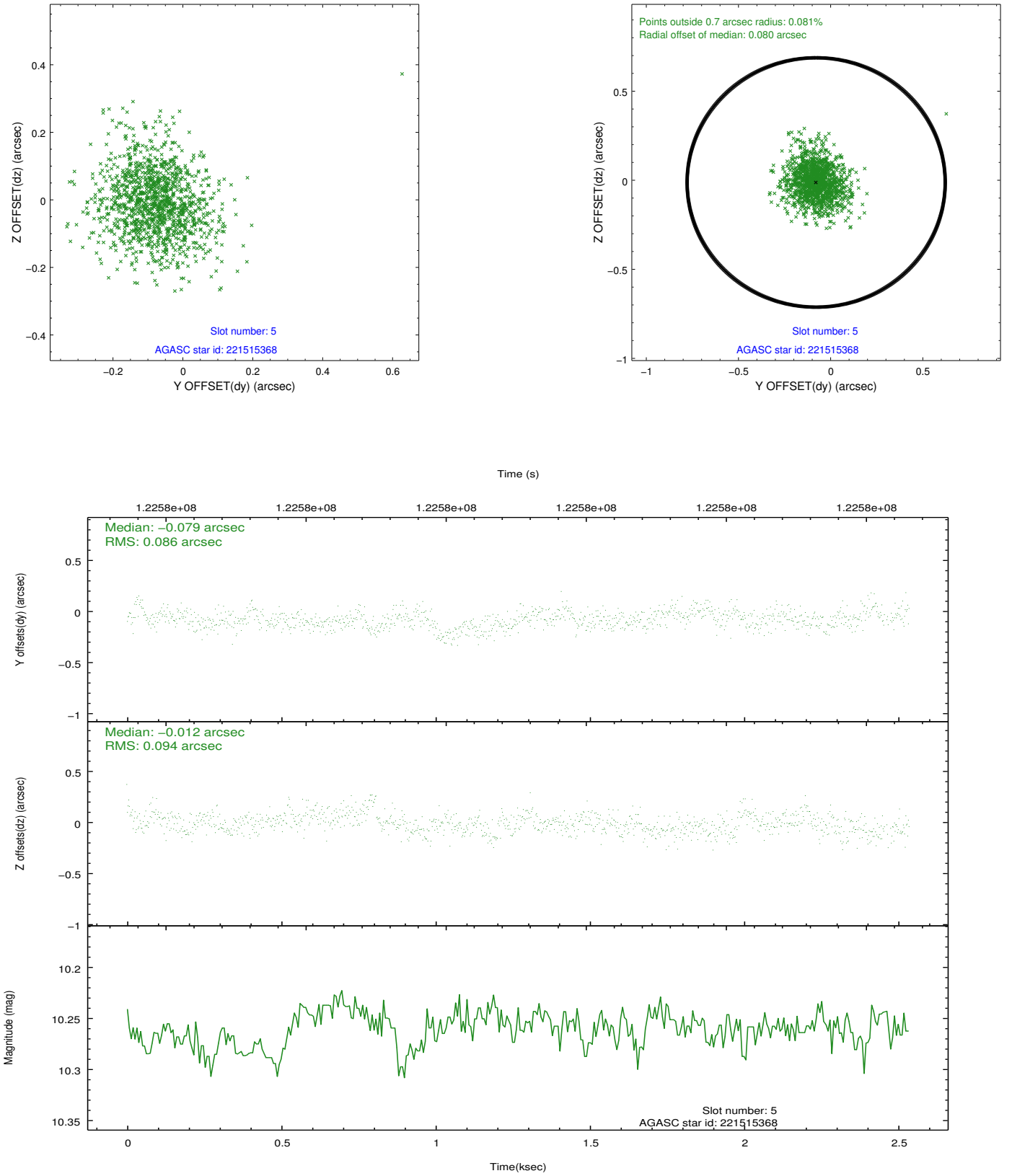
2.4.1 Slot 3



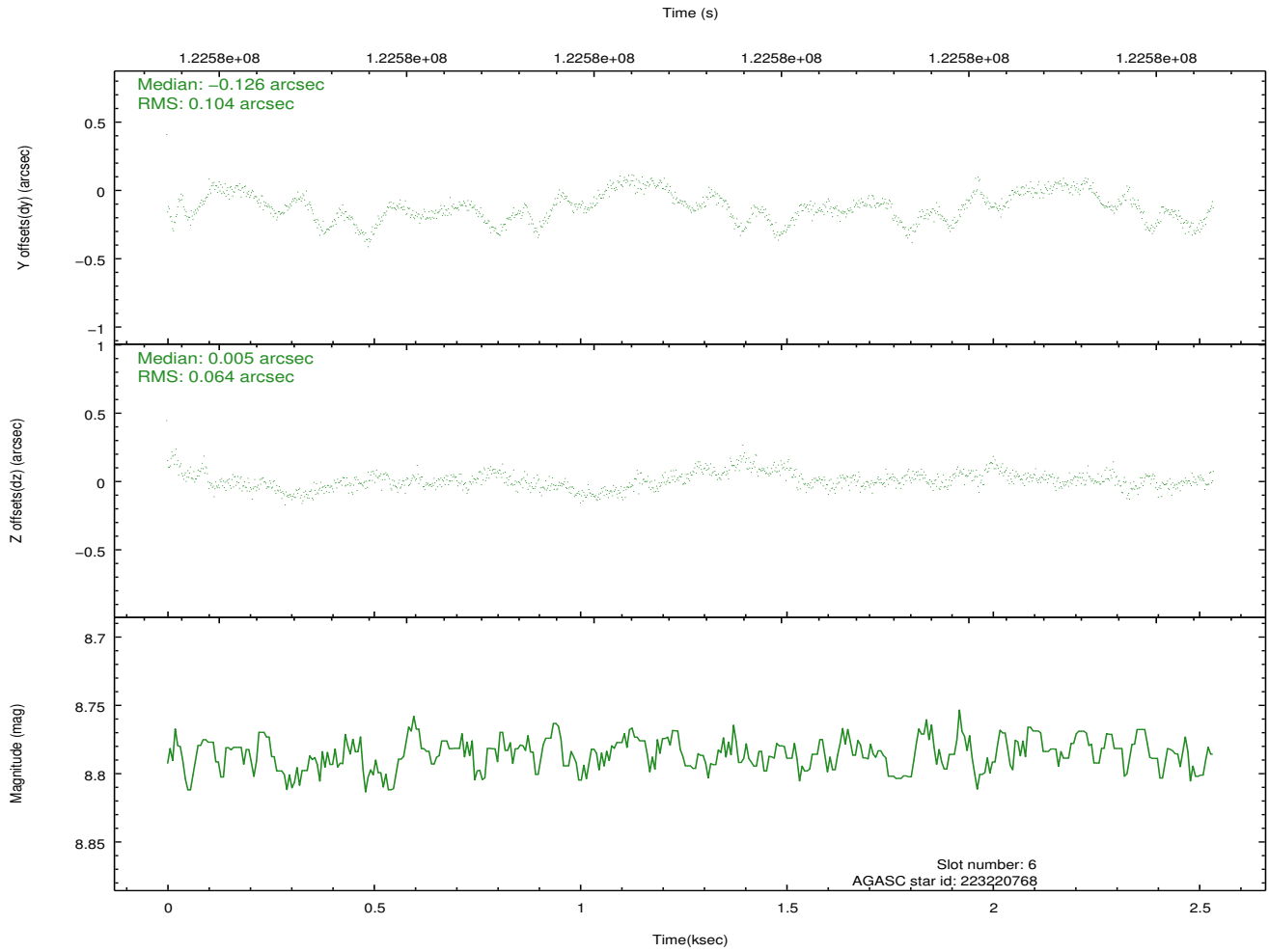
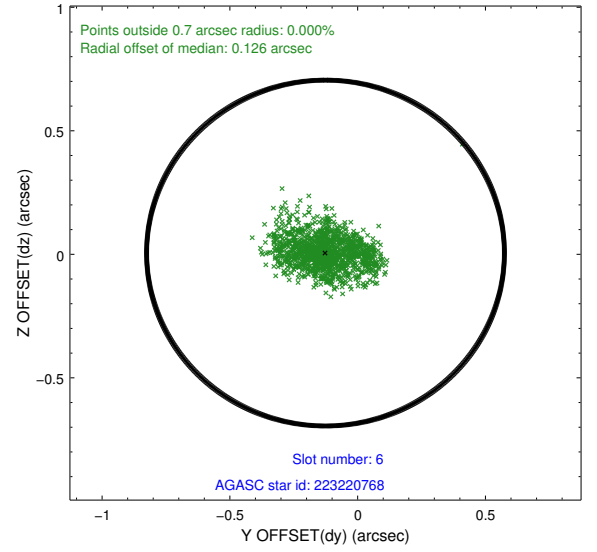
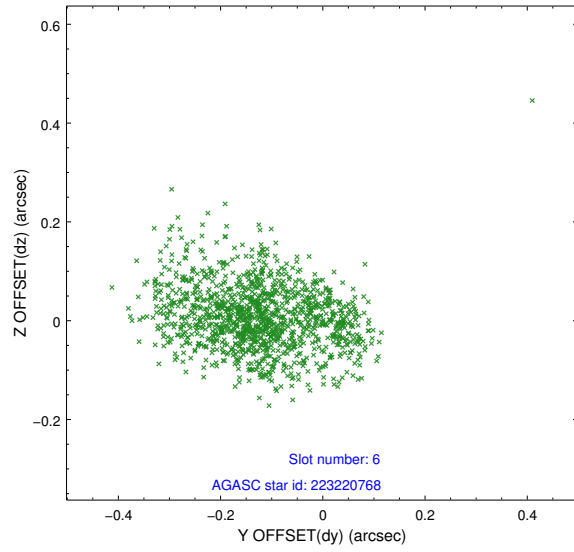
2.4.2 Slot 4



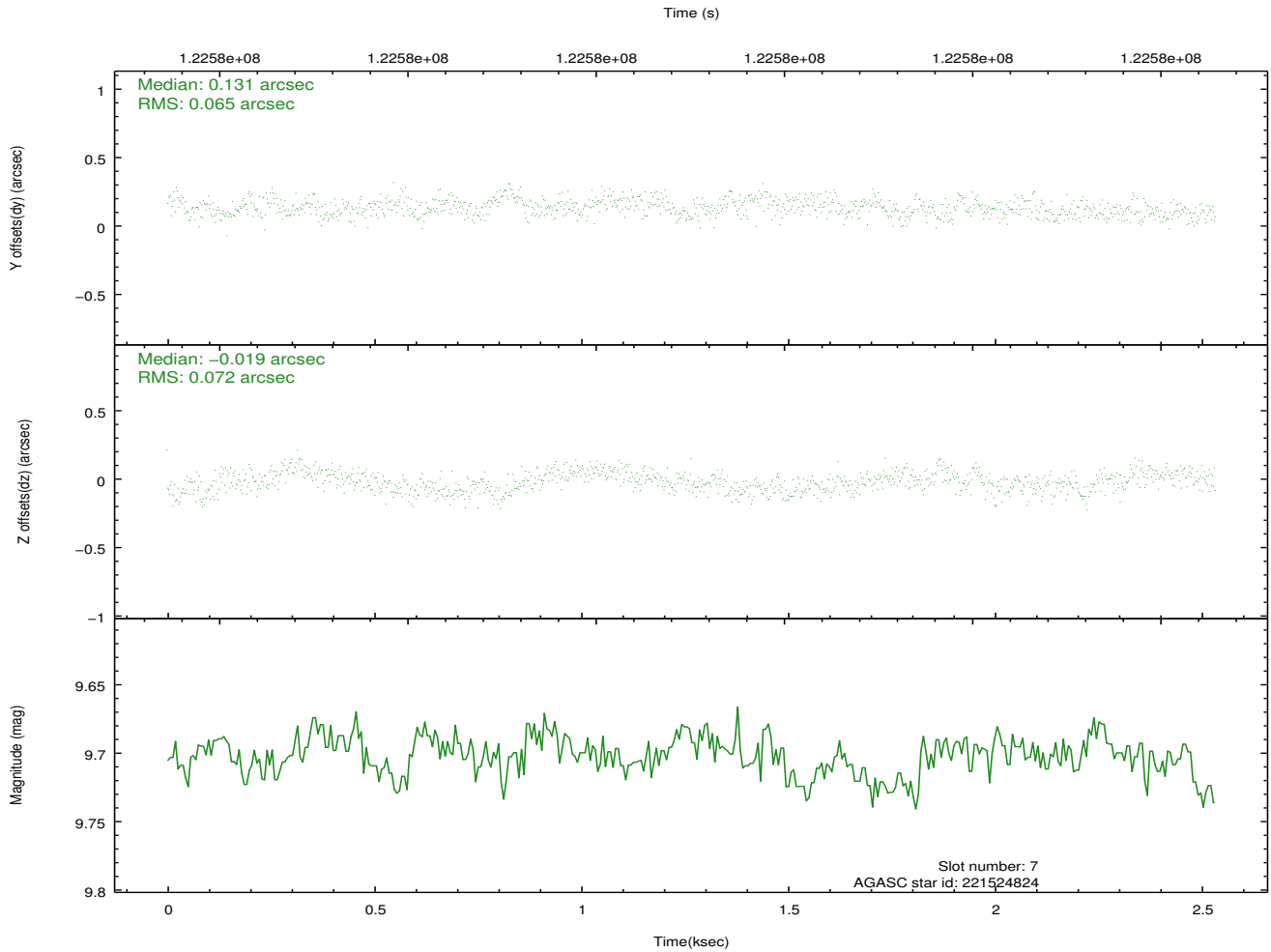
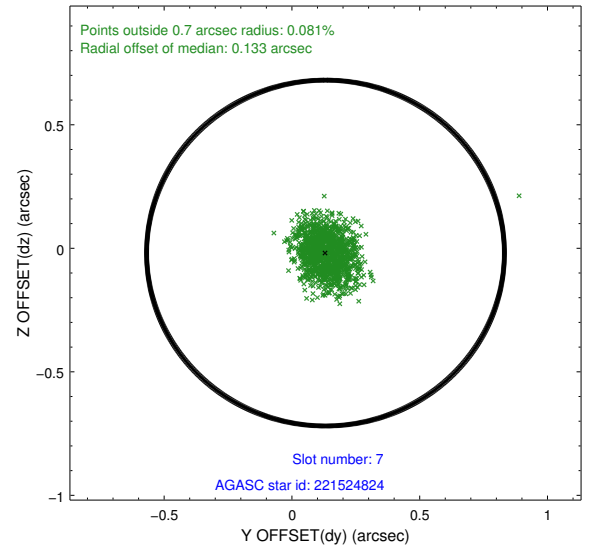
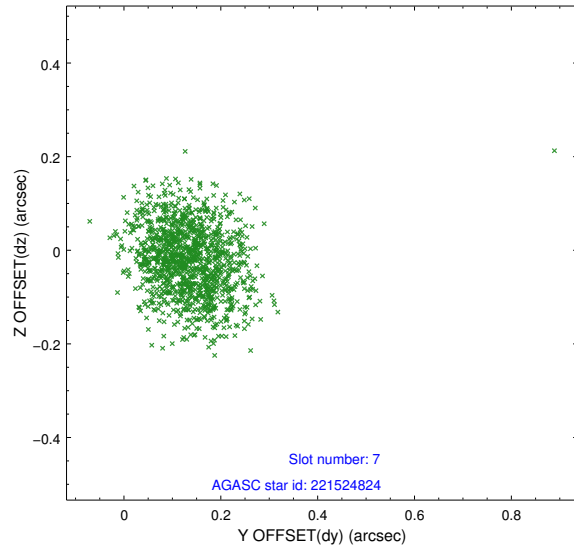
2.4.3 Slot 5



2.4.4 Slot 6

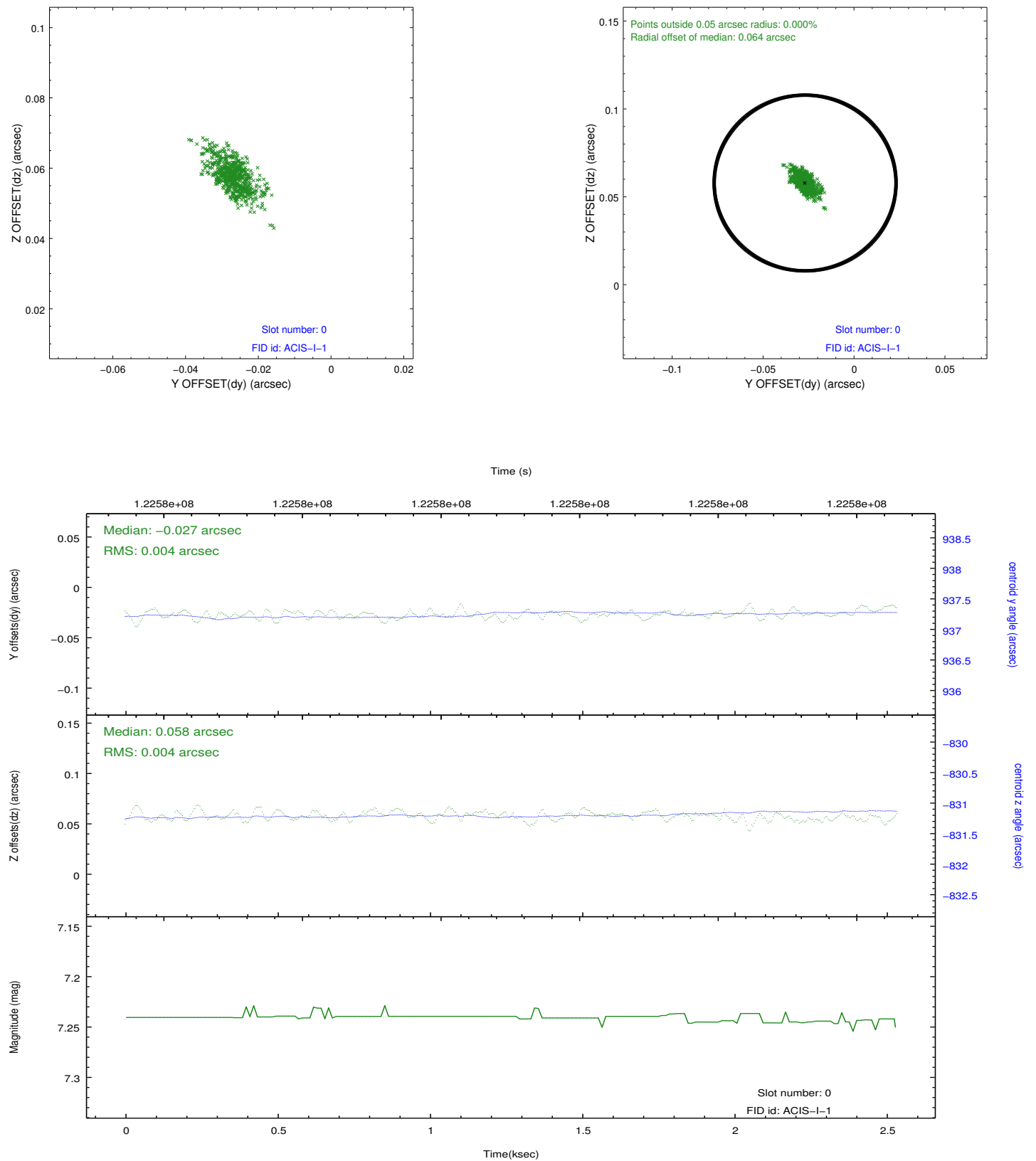


2.4.5 Slot 7

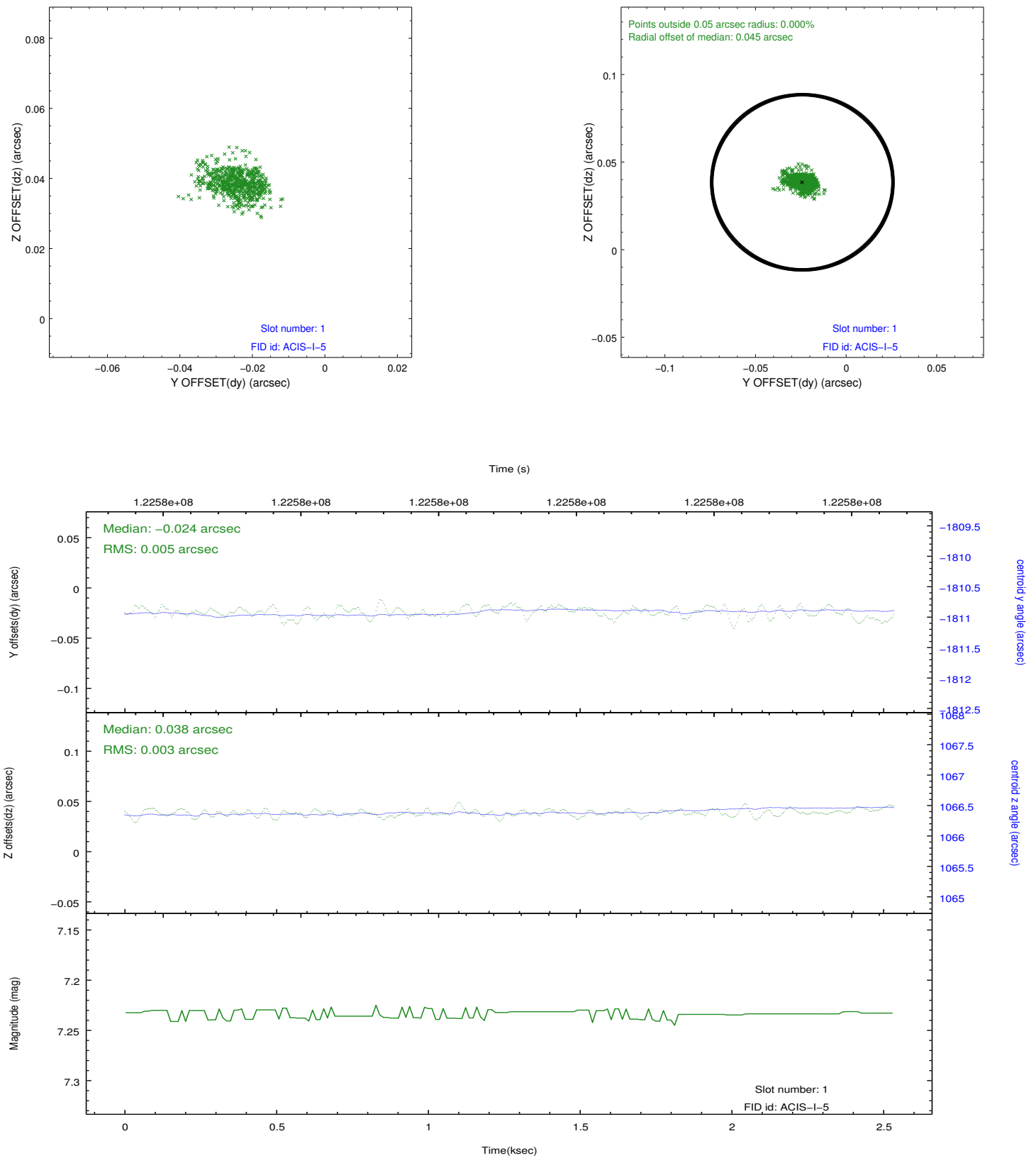


2.5 FID Slots

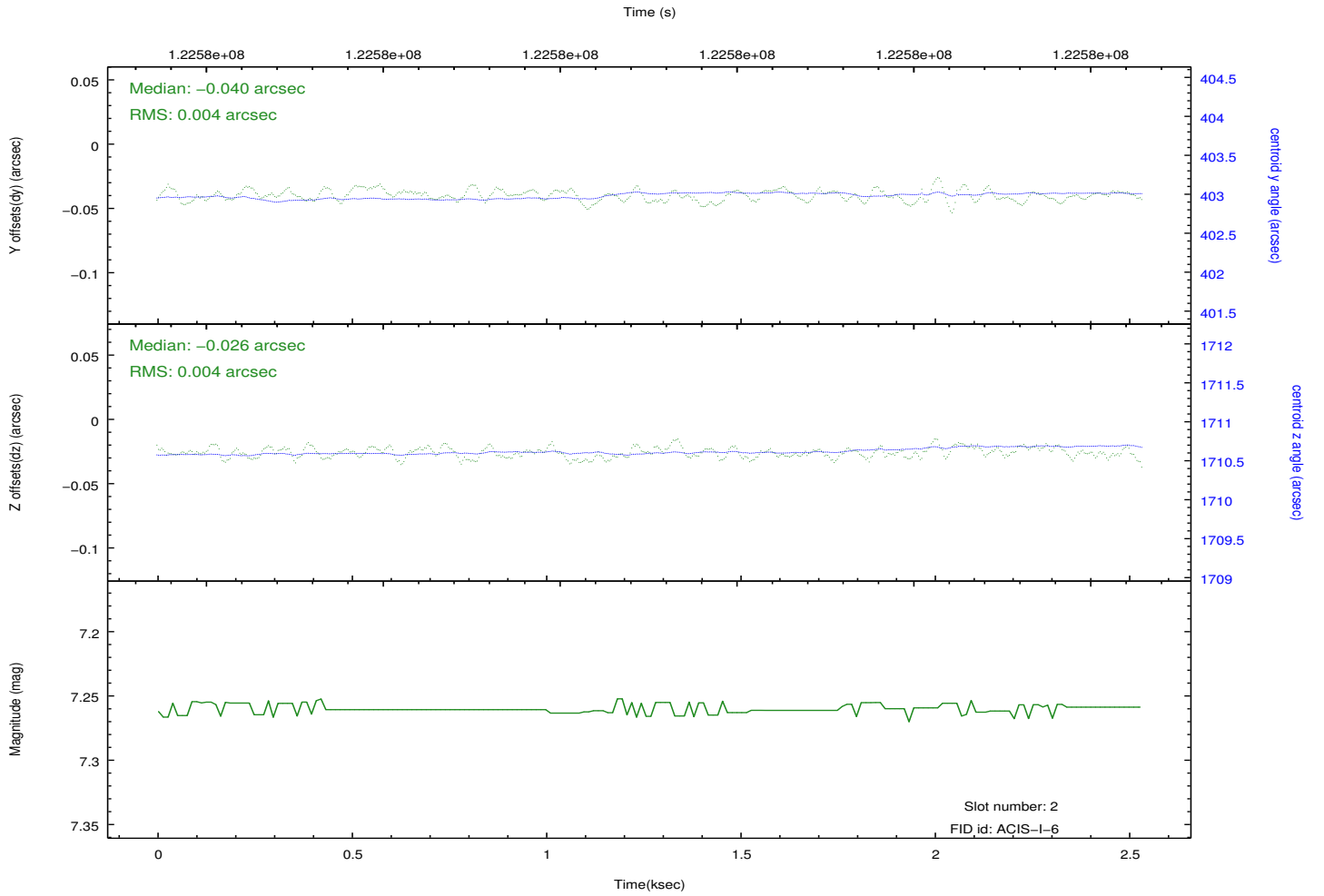
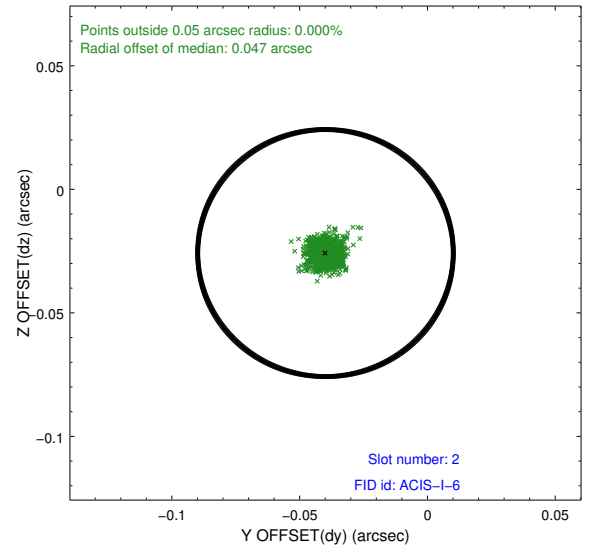
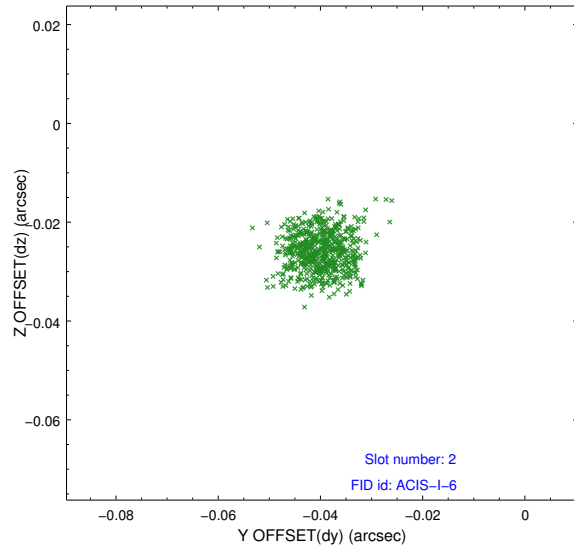
2.5.1 Slot 0



2.5.2 Slot 1



2.5.3 Slot 2



A Summary

A.1 Status

V&V Scientist	Jen Lauer
V&V Date (YYYY-MM-DD)	2012.09.28
V&V Edition	1
V&V Disposition and Status	OK
V&V Charge Time	2.534

A.2 Comments