

V&V Reference Report

L2 ASCDS Version : 8.4.5

Observation 2170 - L2 Version 3
Chandra X-Ray Center

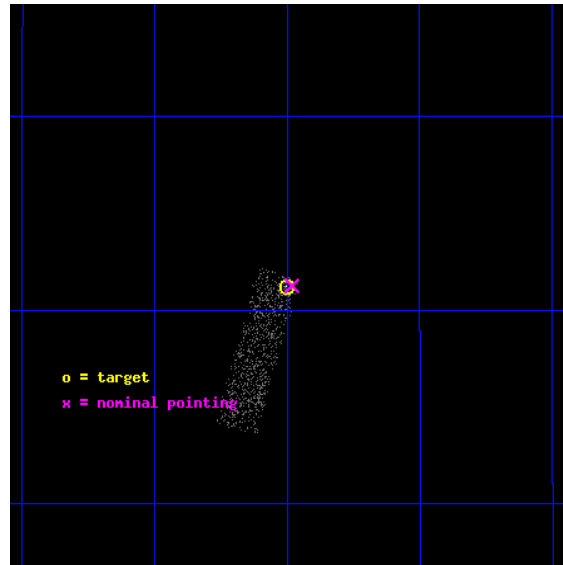
L2 Processing Date : Sep 17 2012

Contents

1	Front	2
2	OBI	3
2.1	OBI	3
2.1.1	Images	3
2.1.2	Bias	3
2.1.3	Parameters	4
2.1.4	Events	4
2.2	Compared Parameters	5
2.3	Aspect	6
2.4	Star Slots	9
2.4.1	Slot 3	9
2.4.2	Slot 4	10
2.4.3	Slot 5	11
2.4.4	Slot 6	12
2.4.5	Slot 7	13
2.5	FID Slots	14
2.5.1	Slot 0	14
2.5.2	Slot 1	15
2.5.3	Slot 2	16
A	Summary	17
A.1	Status	17
A.2	Comments	17

1 Front

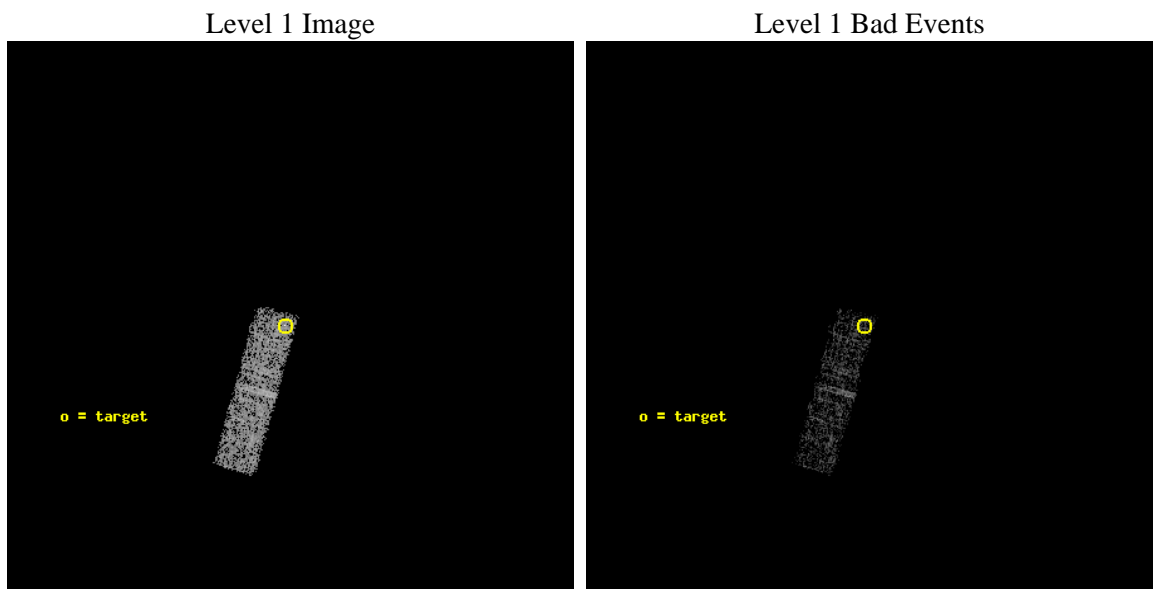
seq_num	700360	Sequence number
obs_id	2170	Observation id
title	RED QUASARS AND THE X-RAY BACKGROUND	Proposal title
observer	Dr. Belinda Wilkes	Principal investigator
object	2MASSJ163700+2221	Source name
dtcycle	0	
cycle	P	events from which exps? Prim/Second/Both
ra_targ	249.250833	Observer's specified target RA [deg]
dec_targ	22.353889	Observer's specified target Dec [deg]
ra_nom	249.24560938611	Nominal RA [deg]
dec_nom	22.354339729686	Nominal Dec [deg]
roll_nom	195.68119366998	Nominal Roll [deg]
revision	3	Processing version of data
ontime	4595.1999828964	Sum of GTIs [s]
livetime	4370.9692598654	Livetime [s]
ontime3	4595.1999828964	Sum of GTIs [s]
l2events	1043	Number of level 2 events



2 OBI

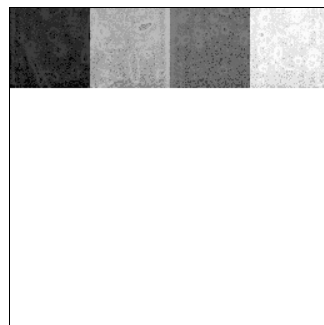
2.1 OBI

2.1.1 Images



2.1.2 Bias

Chip 3



2.1.3 Parameters

obi_num	0	Obi number	sched_exp_time	4100.000000	[s] Scheduled observation exposure time
ascdsver	8.4.5	Processing system revision	ontime	4595.1999828964	Sum of GTIs [s]
caldsver	4.5.1.1	 	ontime3	4595.1999828964	Sum of GTIs [s]
date	2012-09-17T21:25:24	Date and time of file creation	l1events	11027	Number of level 1 events
revision	3	Processing version of data			

2.1.4 Events

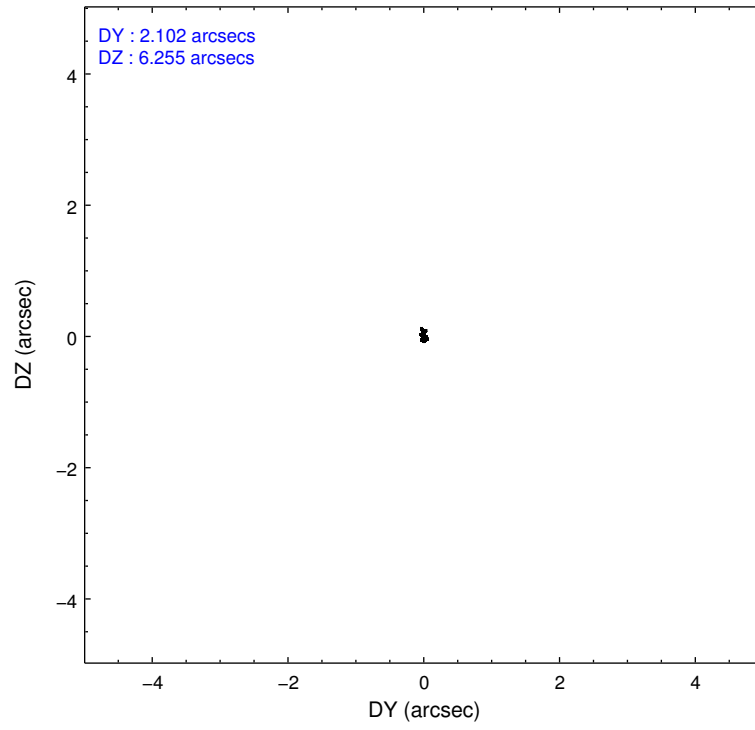
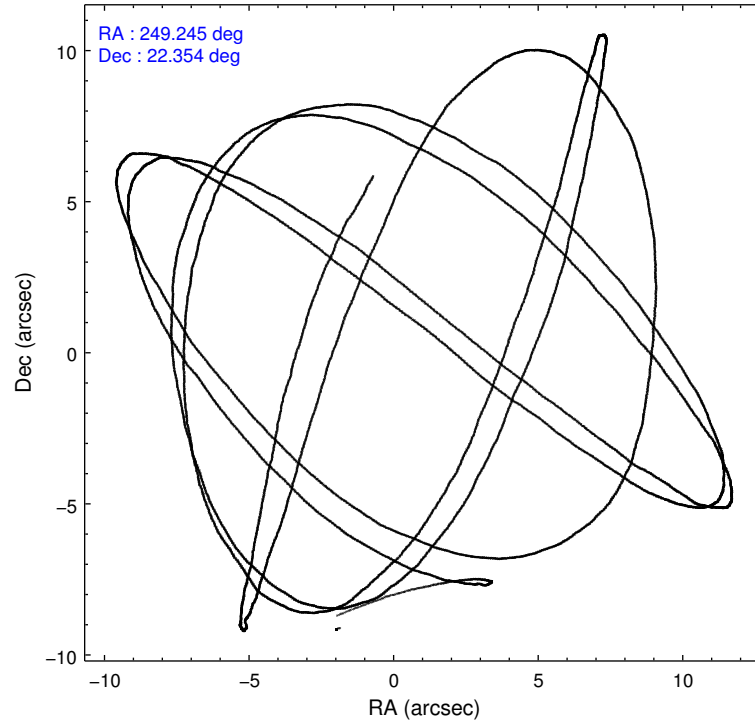
	ccd 3
level 1 events	11027
rejected events	9804
rejected %	88%

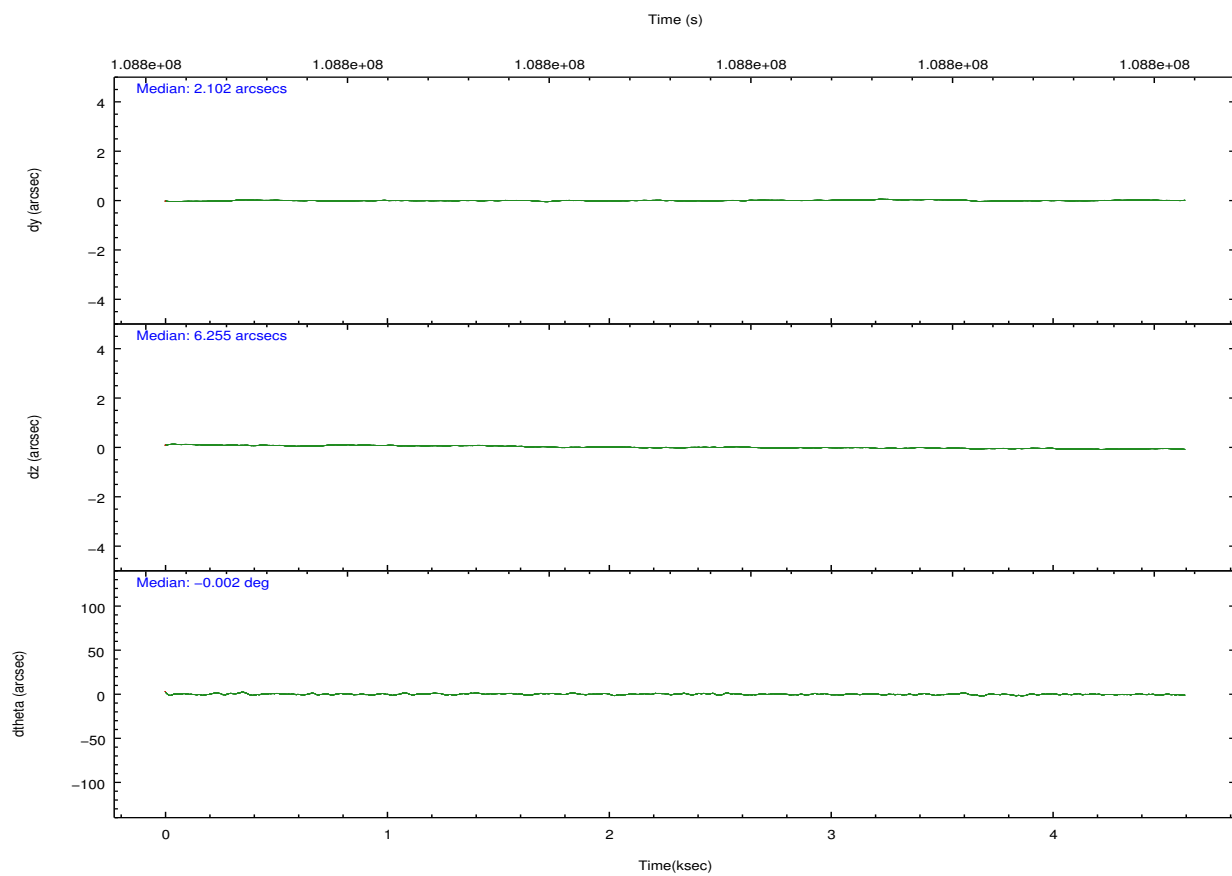
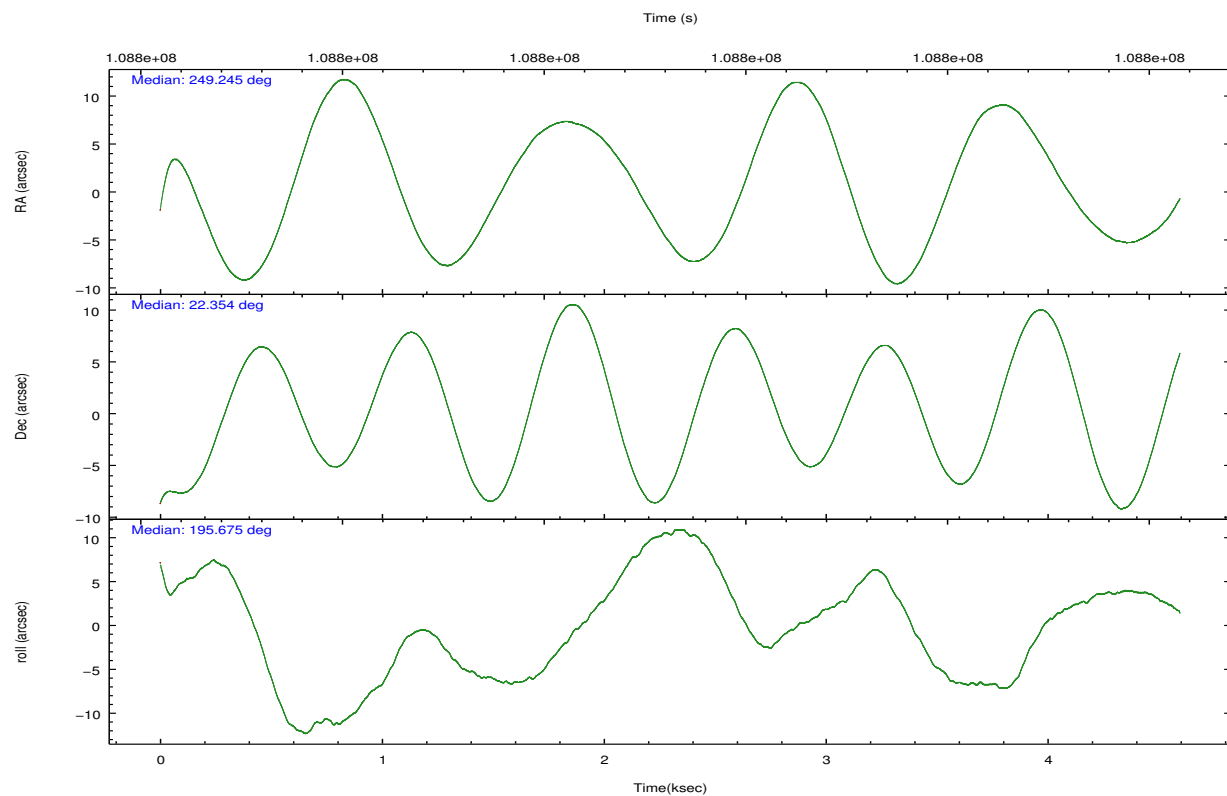
	ccd 3
grade 0 events	545
	4%
grade 1 events	2
	0%
grade 2 events	207
	1%
grade 3 events	170
	1%
grade 4 events	193
	1%
grade 5 events	338
	3%
grade 6 events	184
	1%
grade 7 events	9388
	85%

2.2 Compared Parameters

Parameter	Planned	Actual	Parameter	Planned	Actual
Instrument	ACIS	ACIS	Obspar format version number	7	7
Detector	ACIS-3	ACIS-3	Obspar file type	PREDICTED	ACTUAL
Grating	NONE	NONE	Obspar update status	NONE	UPDATED
Data mode	VFAINT	VFAINT	Number of optional ACIS chips dropped	0	0
Observation mode	POINTING	POINTING	On-chip summing requested	N	N
[deg] Pointing RA	249.266466	249.2456093861135	Subarray requested	CUSTOM	1/4
[deg] Pointing Dec	22.374147	22.35433972968633	Subarray start row	769	769
[deg] Pointing Roll	195.464564	195.681193669982	Subarray row count	256	256
[mm] SIM focus pos	-0.782348	-0.7809083437167272	Alternating exposures requested	N	N
[mm] SIM defocus	0	0.001439871863259334	[s] Primary exposure time	0.000000	0.8
[mm] SIM translation stage pos	-233.592463	-233.5874344608287			
[mm] SIM translation stage offset	0	-0.005018542100998502			
[s] Observation start time (MET)	108796823.184000	108795714.74671			
Observation start date	2001-06-13T05:19:19	2001-06-13T05:01:54			
[s] Observation end time (MET)	108800923.184000	108801745.33445			
Observation end date	2001-06-13T06:27:39	2001-06-13T06:42:25			
Read mode	TIMED	TIMED			

2.3 Aspect



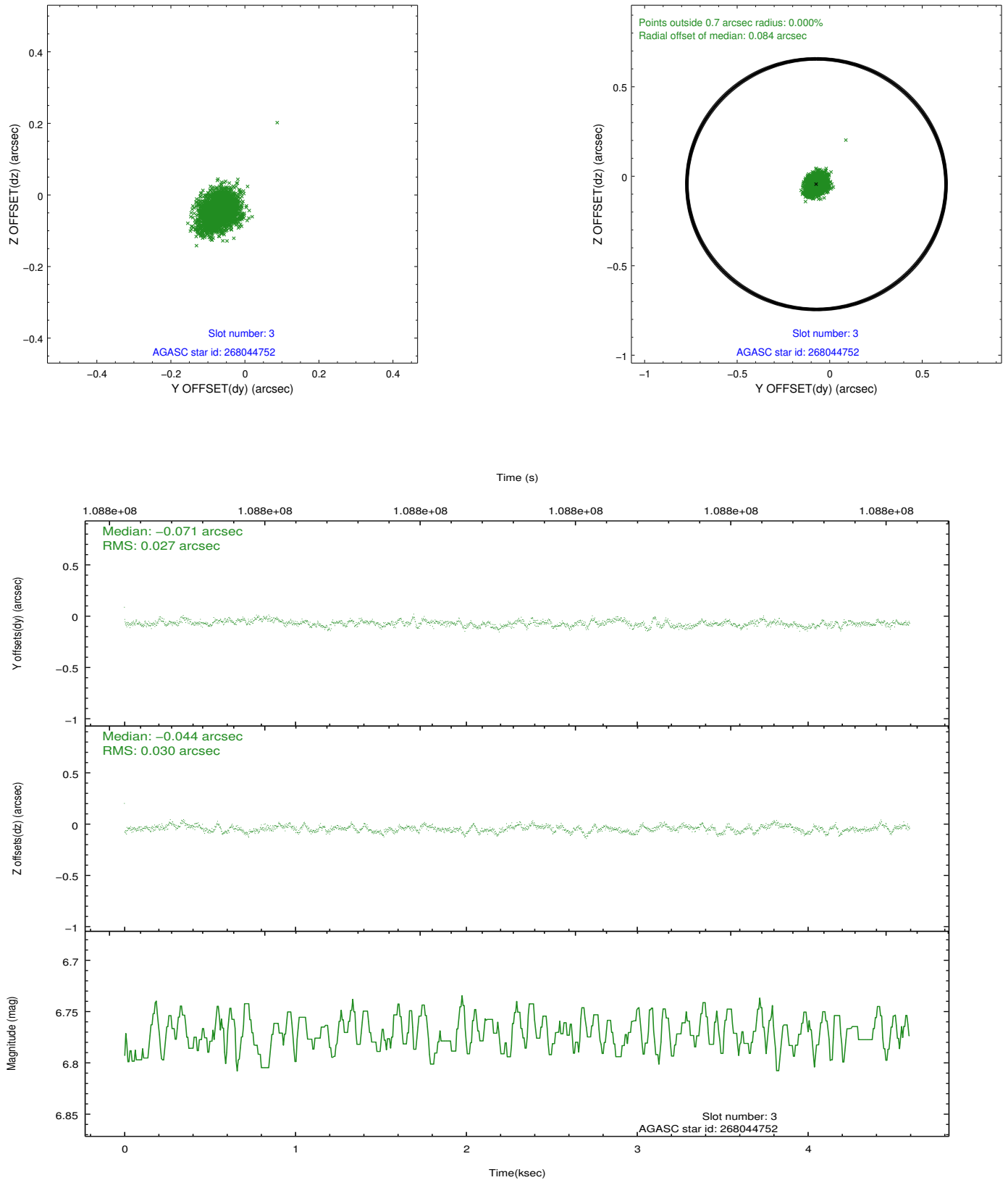


Slot Statistics

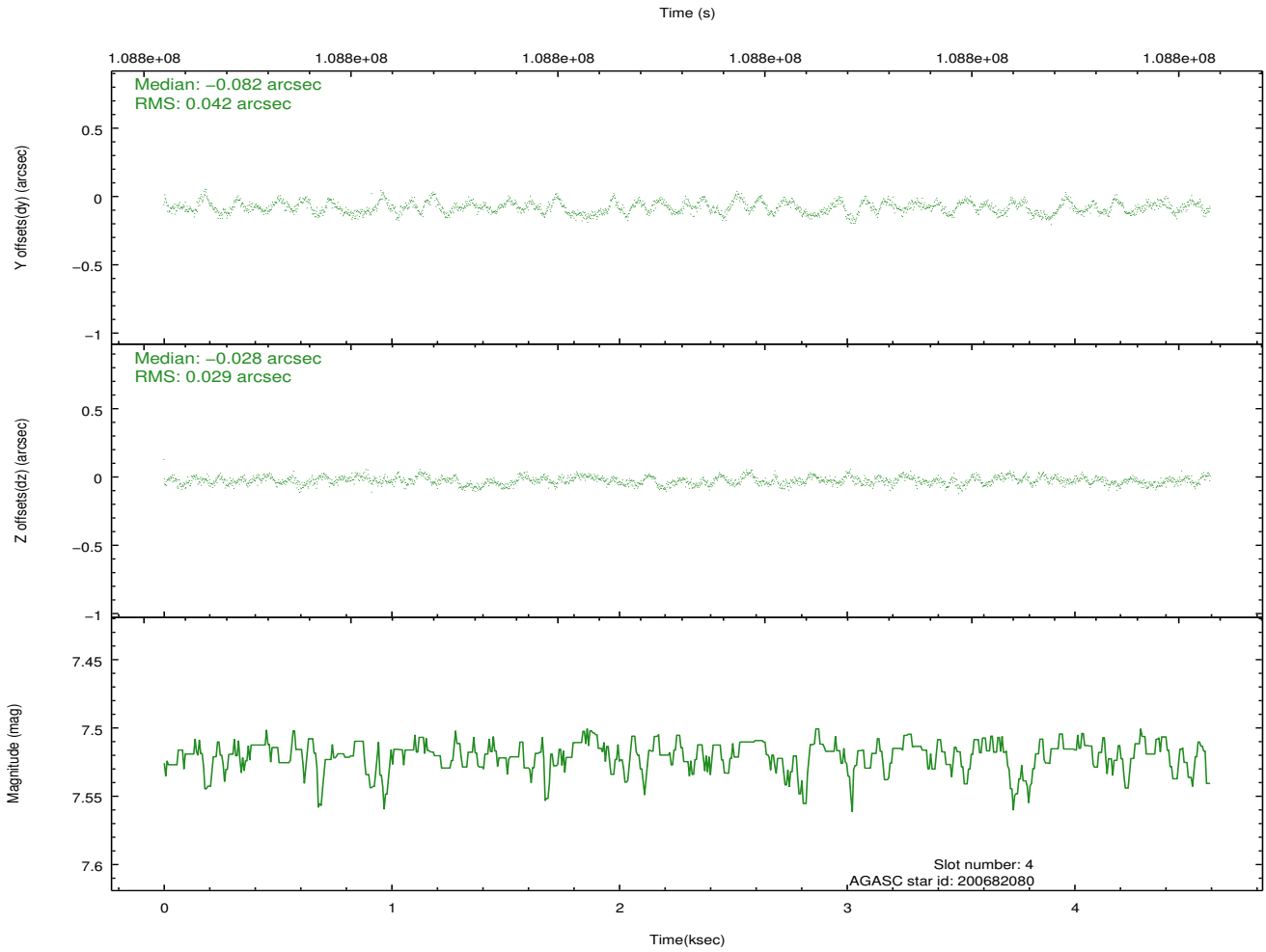
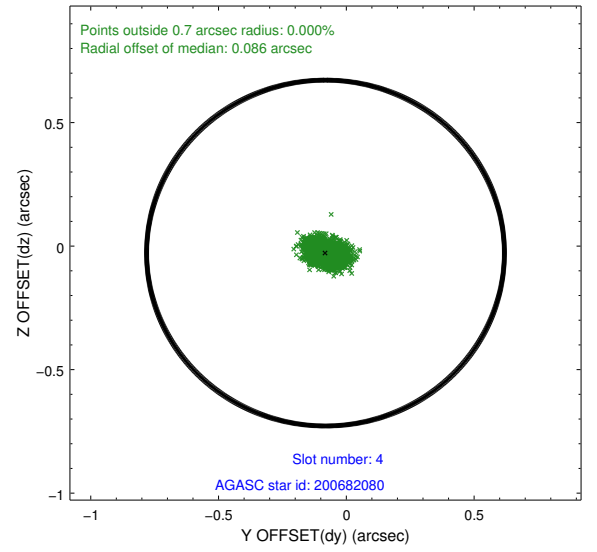
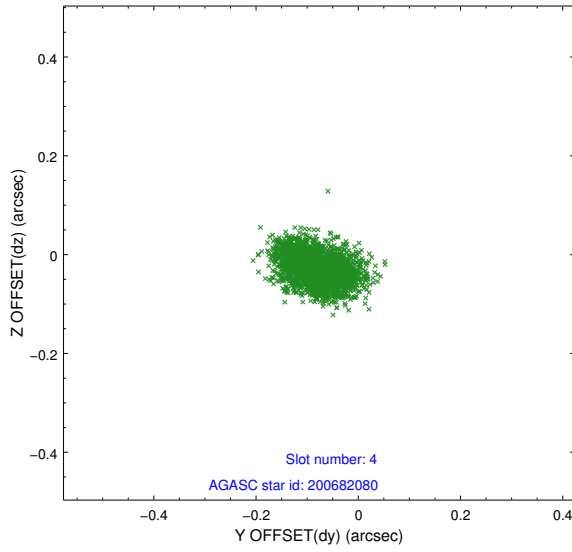
slot	status	id	mag	n_pts	med_dy	med_dz	dr1	dr2	ra	dec	mean_y	mean_z
0	FID	ACIS-I-2	7.15	1122	-0.040	-0.072	0.009	0.016	0.000000	0.000000	-756.49	-836.08
1	FID	ACIS-I-4	7.18	1122	-0.008	0.050	0.005	0.010	0.000000	0.000000	2156.98	1069.56
2	FID	ACIS-I-5	7.23	1122	-0.054	0.091	0.009	0.015	0.000000	0.000000	-1808.62	1068.95
3	GUIDE	268044752	6.77	2242	-0.071	-0.044	0.043	0.069	249.224749	22.867918	-341.72	-1750.30
4	GUIDE	200682080	7.52	2242	-0.082	-0.028	0.055	0.087	249.822622	22.221200	-1641.94	1020.28
5	GUIDE	200676472	8.50	2242	0.017	-0.058	0.055	0.086	248.946074	22.121680	1269.96	590.18
6	GUIDE	268051544	9.02	2240	0.078	0.045	0.072	0.117	249.392786	22.575832	-598.75	-588.04
7	GUIDE	200678280	9.76	2239	0.054	0.090	0.107	0.171	248.877803	21.599139	1995.86	2340.33

2.4 Star Slots

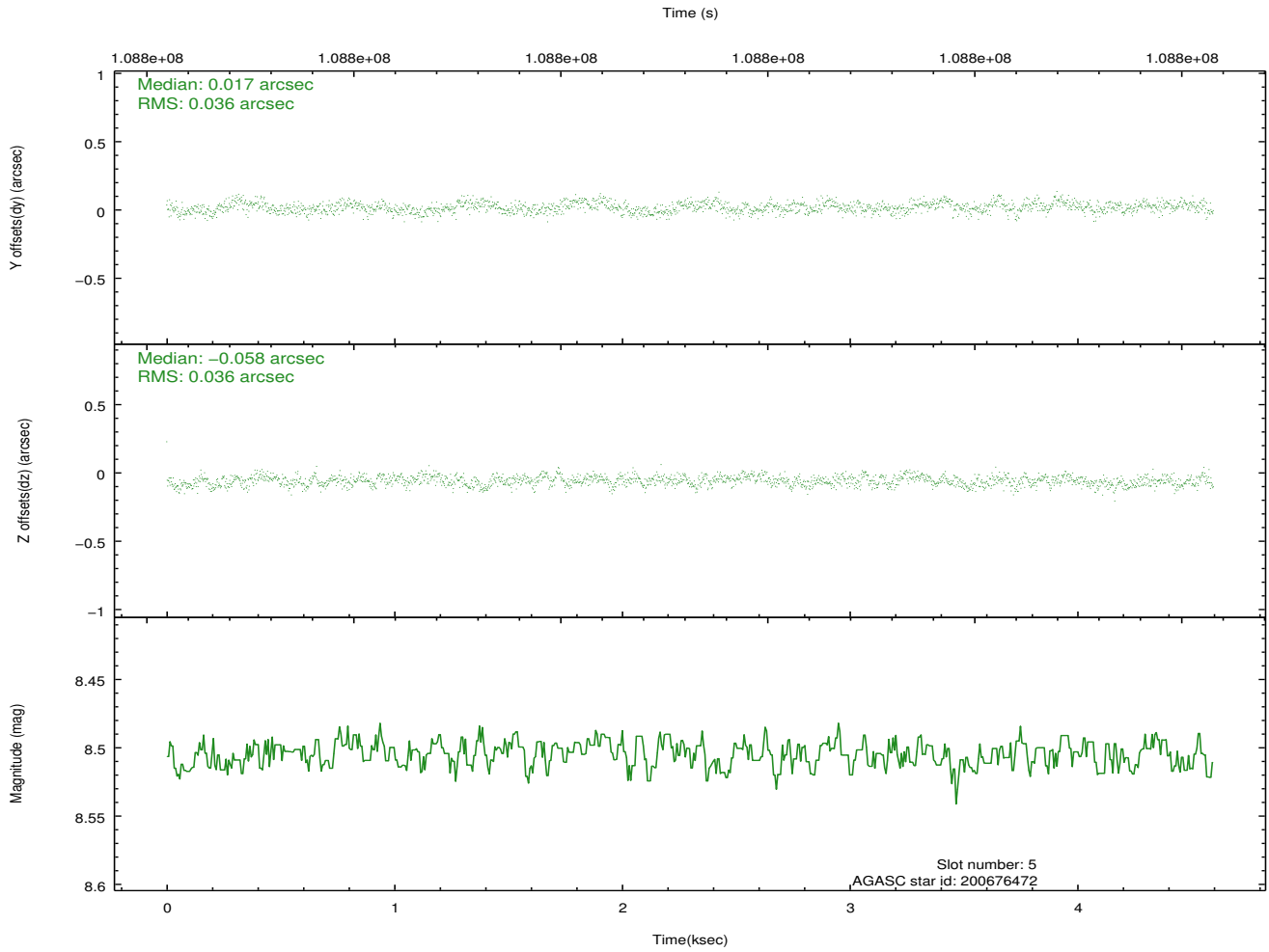
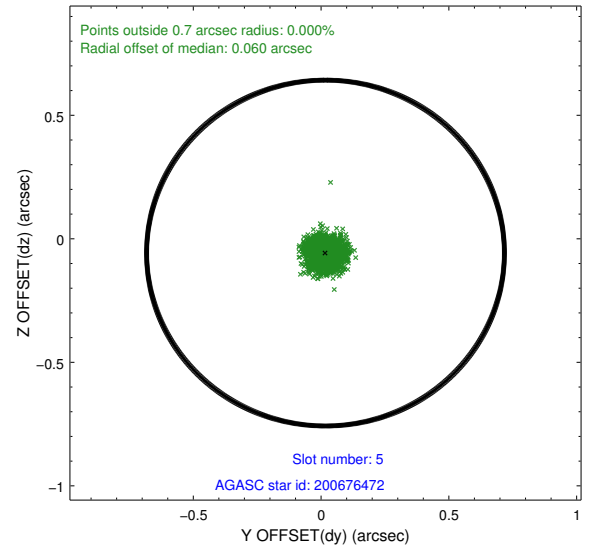
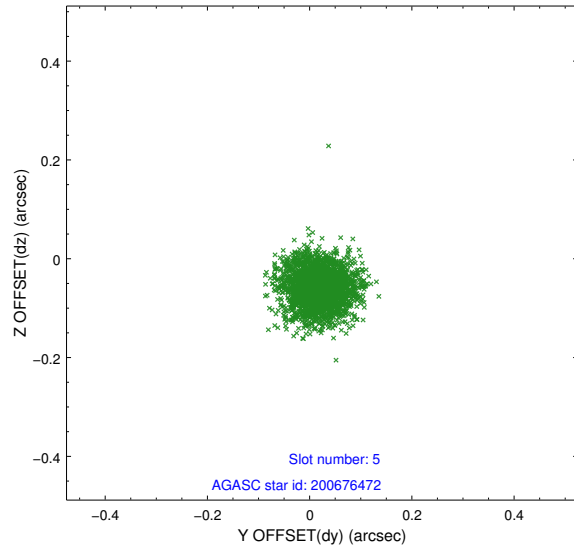
2.4.1 Slot 3



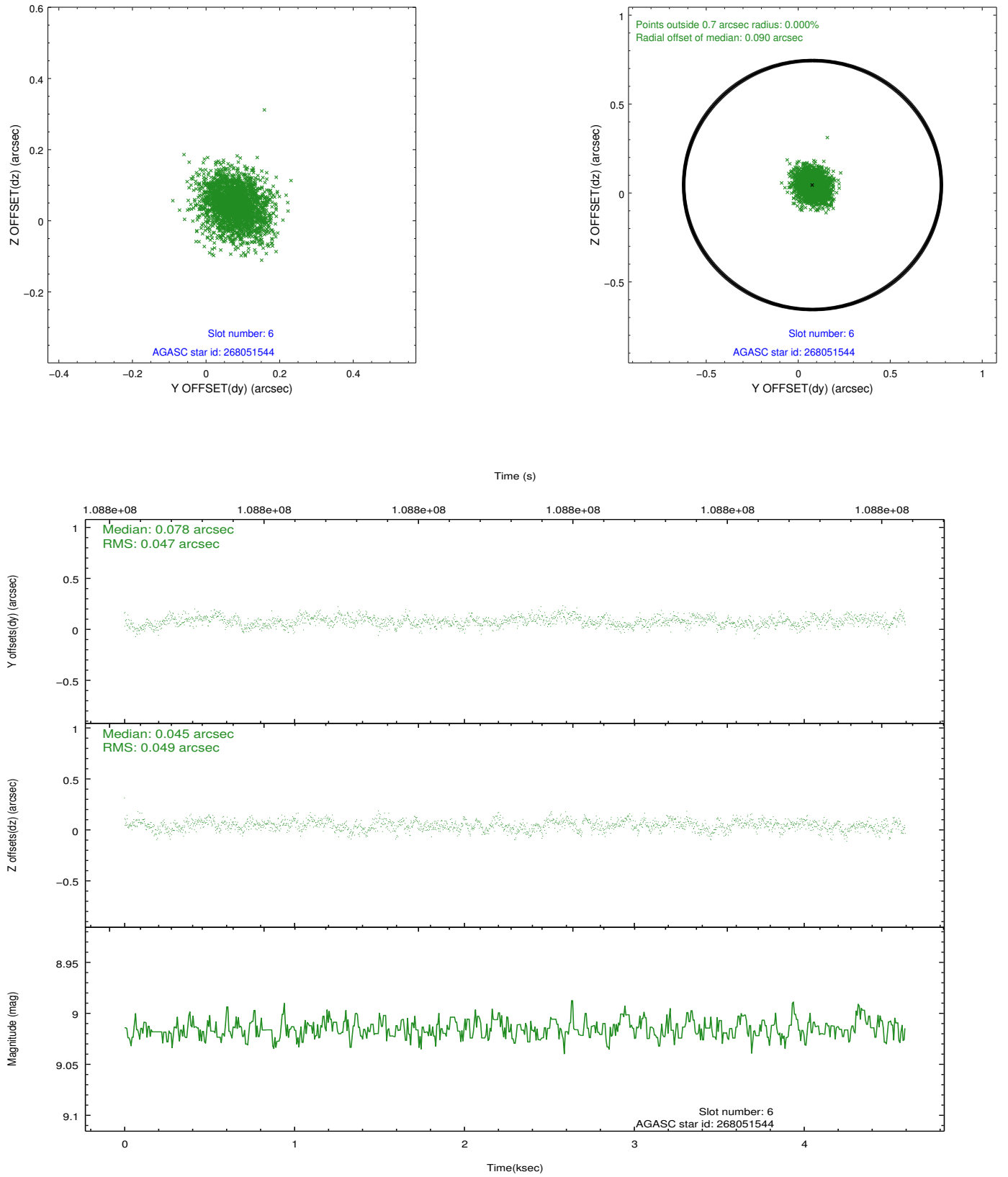
2.4.2 Slot 4



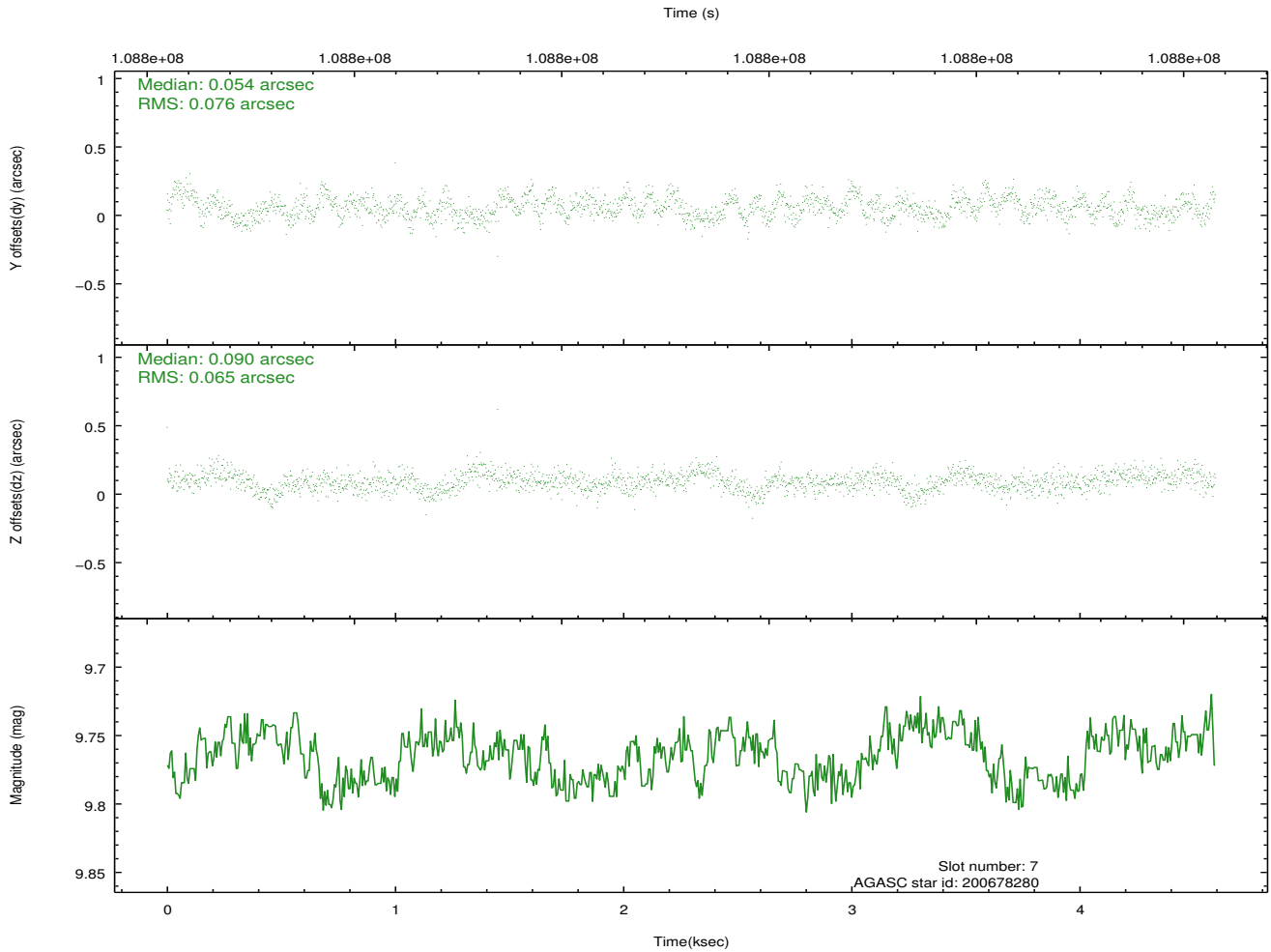
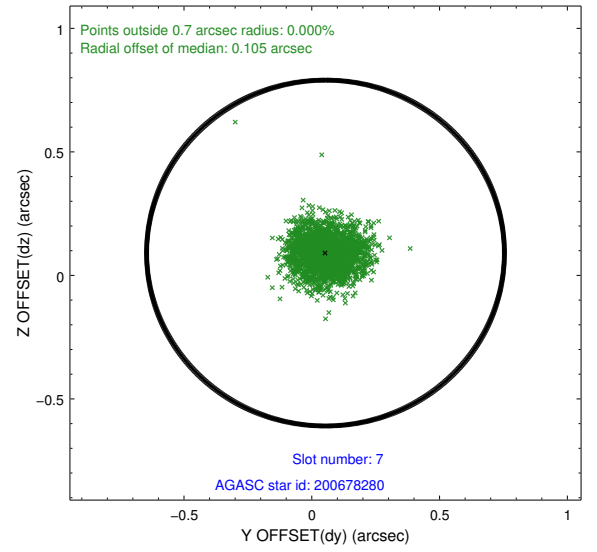
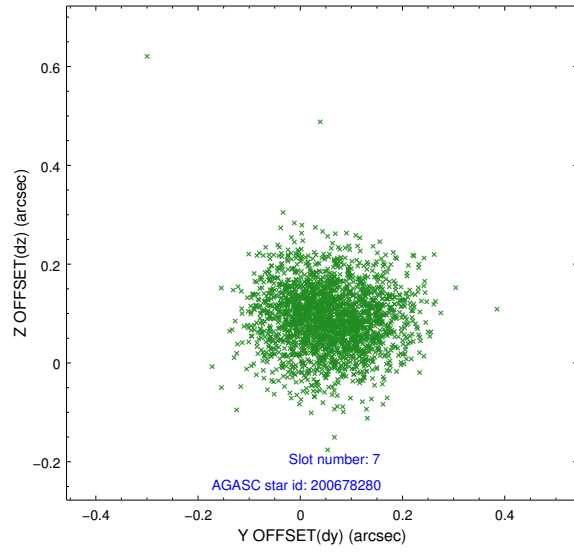
2.4.3 Slot 5



2.4.4 Slot 6

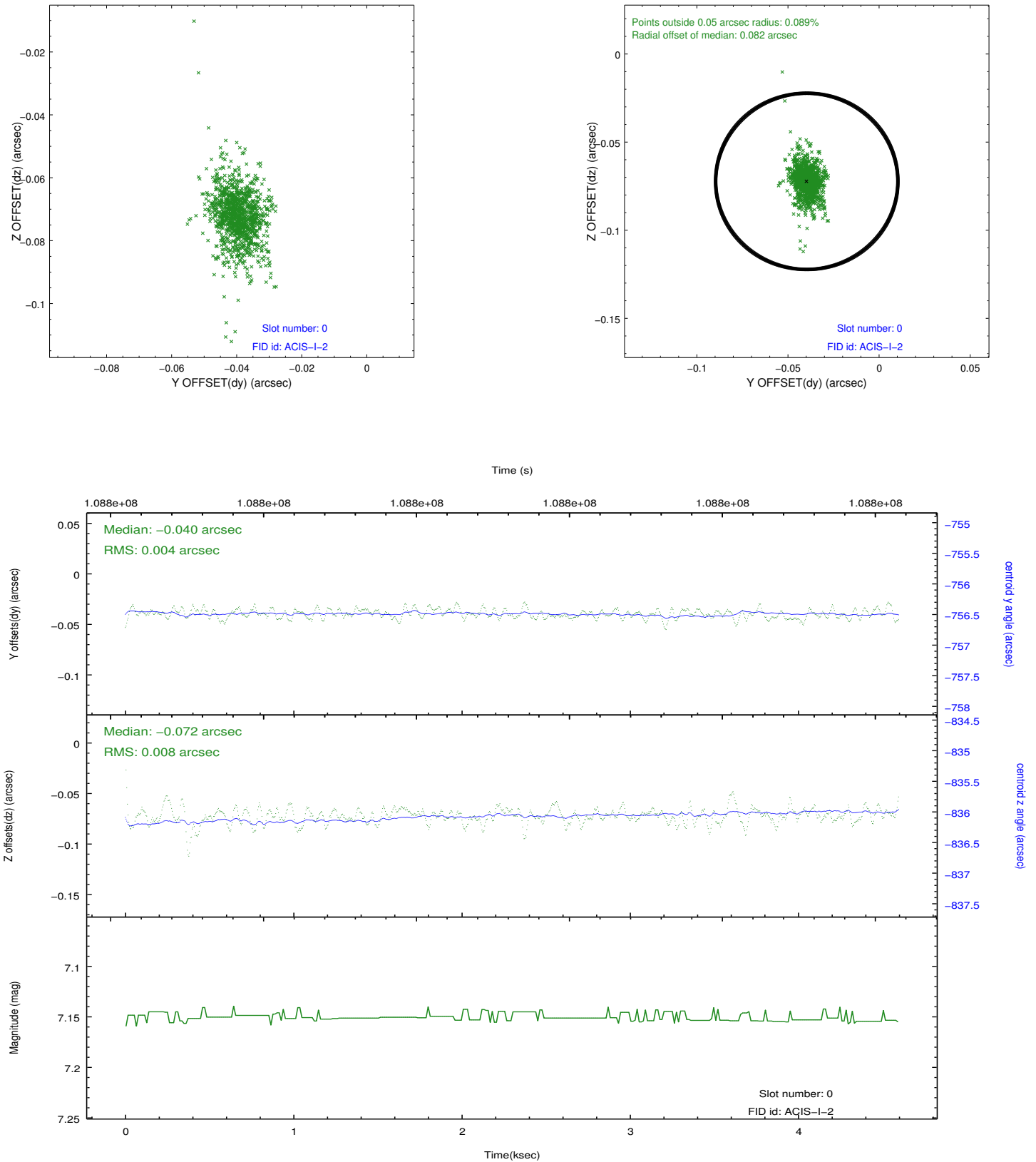


2.4.5 Slot 7

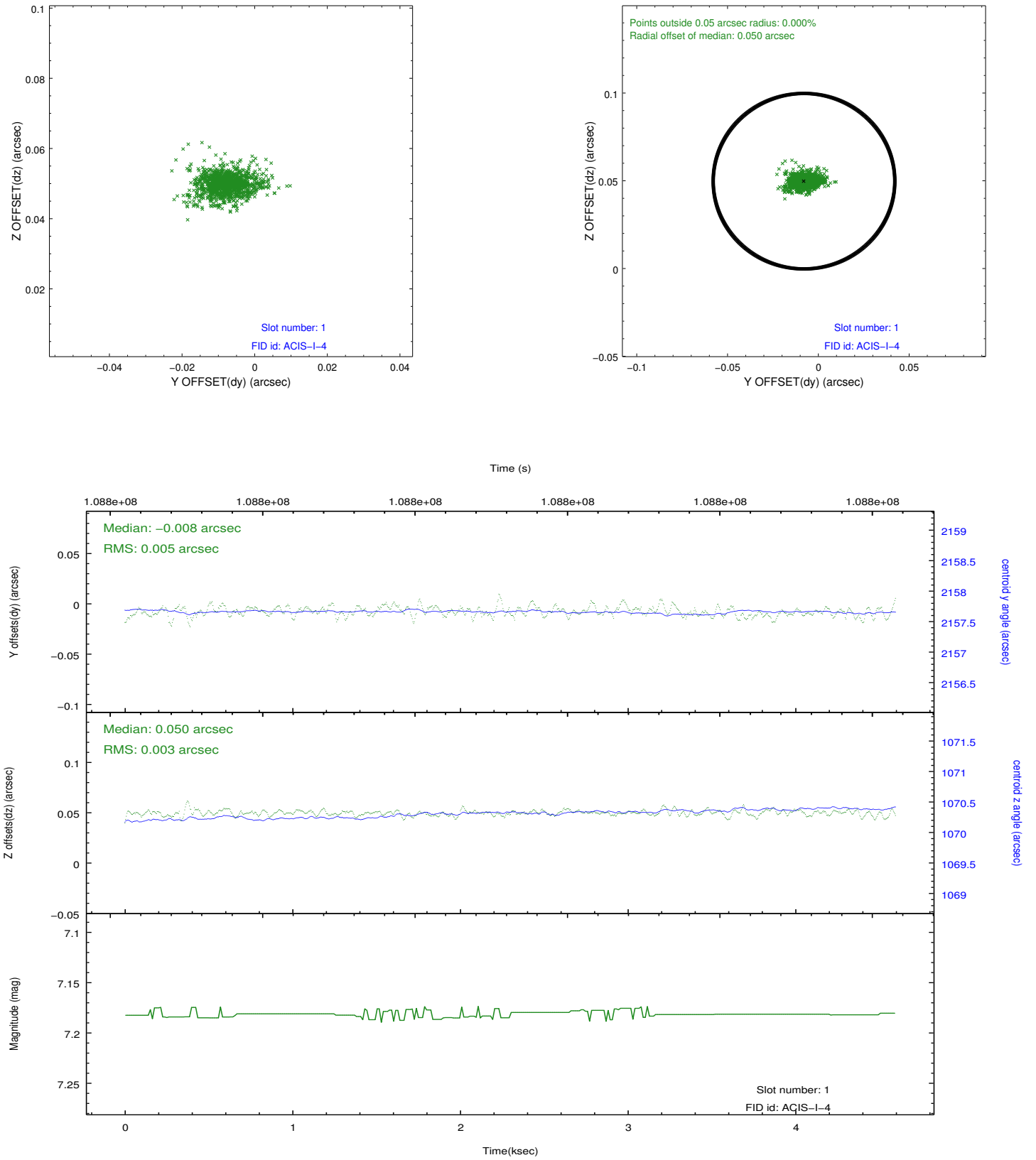


2.5 FID Slots

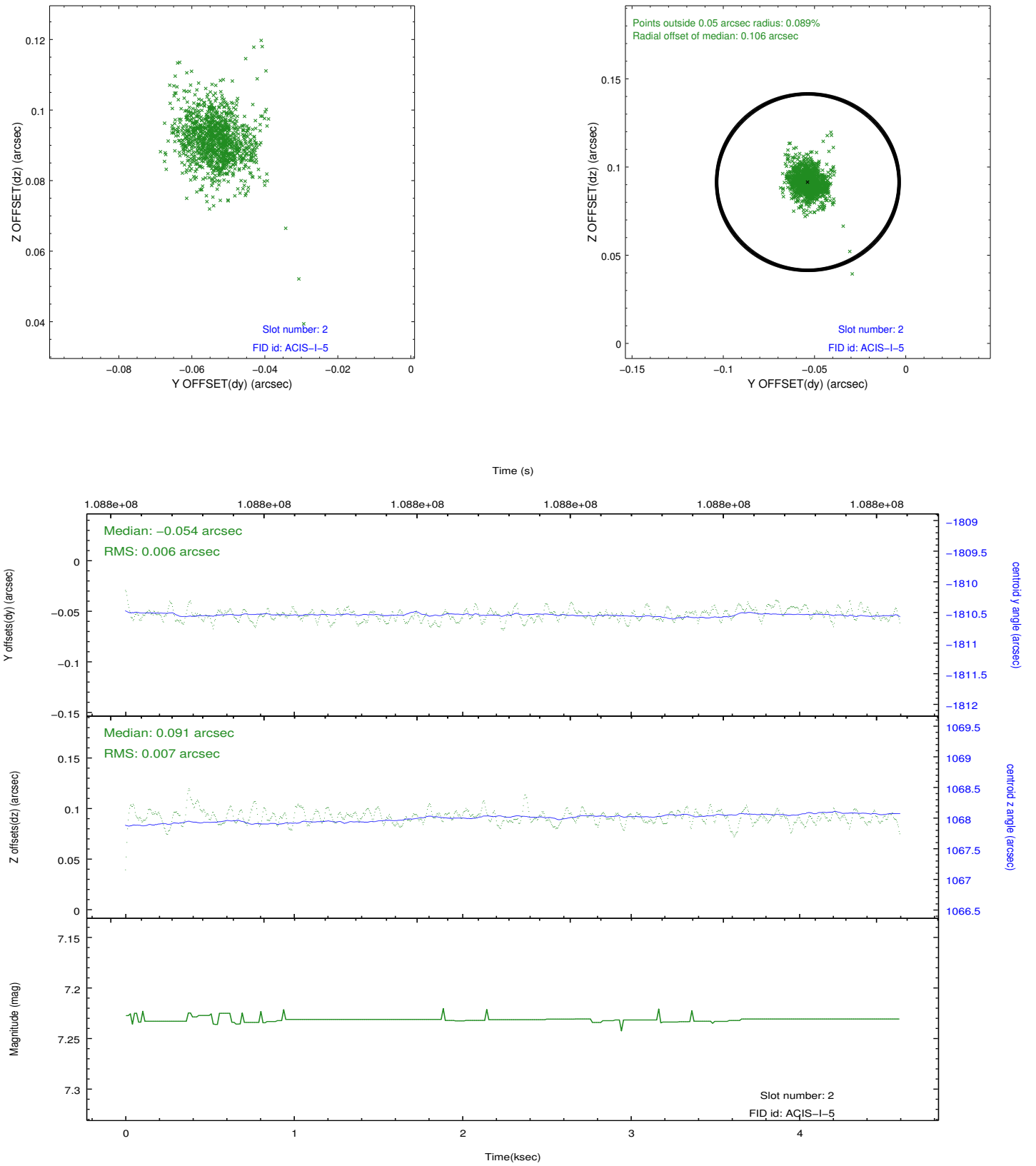
2.5.1 Slot 0



2.5.2 Slot 1



2.5.3 Slot 2



A Summary

A.1 Status

V&V Scientist	Jen Lauer
V&V Date (YYYY-MM-DD)	2012.09.20
V&V Edition	1
V&V Disposition and Status	OK
V&V Charge Time	4.6

A.2 Comments