

V&V Reference Report

L2 ASCDS Version : 7.6.9

Observation 2163 - L2 Version 001
Chandra X-Ray Center

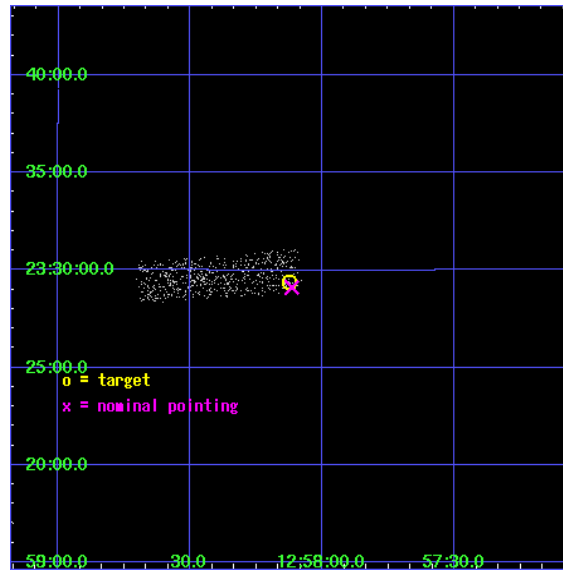
L2 Processing Date : Dec 15 2006

Contents

1	Front	2
2	OBI	3
2.1	OBI	3
2.1.1	Images	3
2.1.2	Bias	3
2.1.3	Parameters	4
2.1.4	Events	4
2.2	Compared Parameters	5
2.3	Aspect	6
2.4	Star Slots	9
2.4.1	Slot 3	9
2.4.2	Slot 4	10
2.4.3	Slot 5	11
2.4.4	Slot 6	12
2.4.5	Slot 7	13
2.5	FID Slots	14
2.5.1	Slot 0	14
2.5.2	Slot 1	15
2.5.3	Slot 2	16
3	Point Sources	17
A	Summary	18
A.1	Status	18
A.2	Comments	18

1 Front

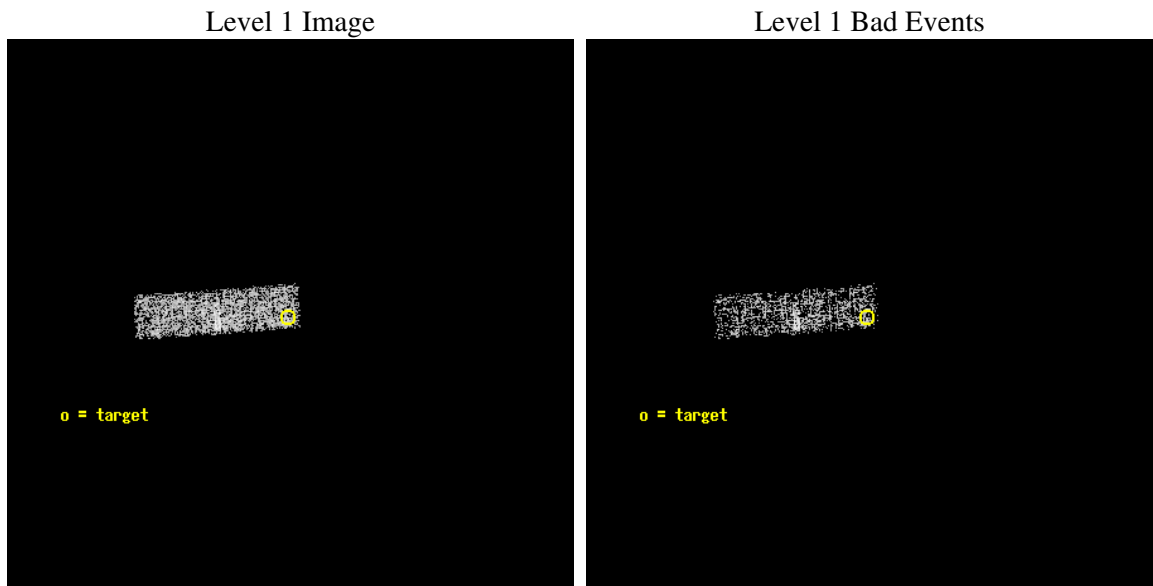
seq_num	700353
obs_id	2163
title	RED QUASARS AND THE X-RAY BACKGROUND
observer	Dr. BELINDA WILKES
object	2MASSJ125807+2329
dtcycle	0
cycle	P
ra_targ	194.53125
dec_targ	23.489306
ra_nom	194.52875085655
dec_nom	23.485208435928
roll_nom	265.8055369231
revision	2
ontime	3300.7589776218
livetime	3139.6927400569
ontime3	3300.7589776218
l2events	607



2 OBI

2.1 OBI

2.1.1 Images



2.1.2 Bias



2.1.3 Parameters

obi_num	2
ascdsver	7.6.9
caldbver	3.2.4
date	2006-12-15T22:42:34
revision	2

sched_exp_time	3100.000000
ontime	4033.5758885443
ontime3	4033.5758885443
l1events	9215

2.1.4 Events

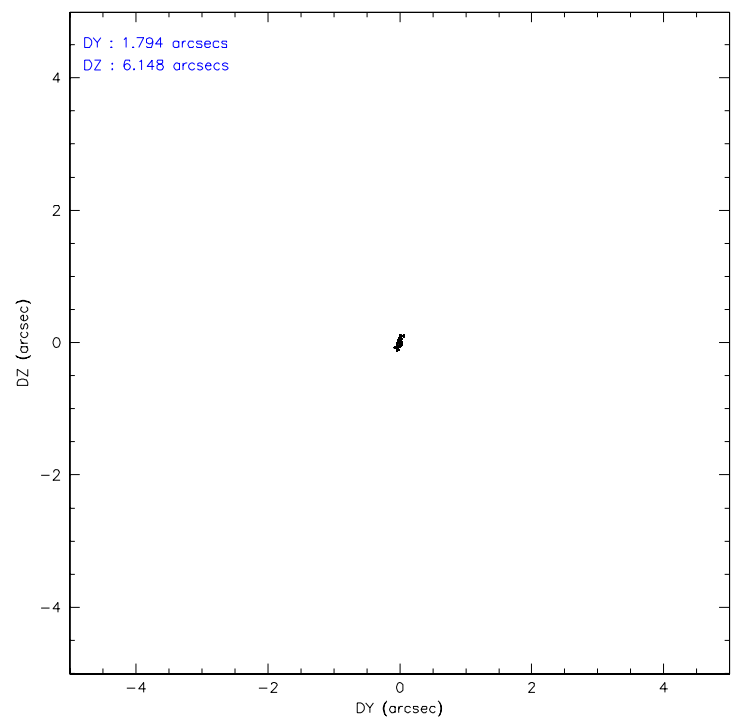
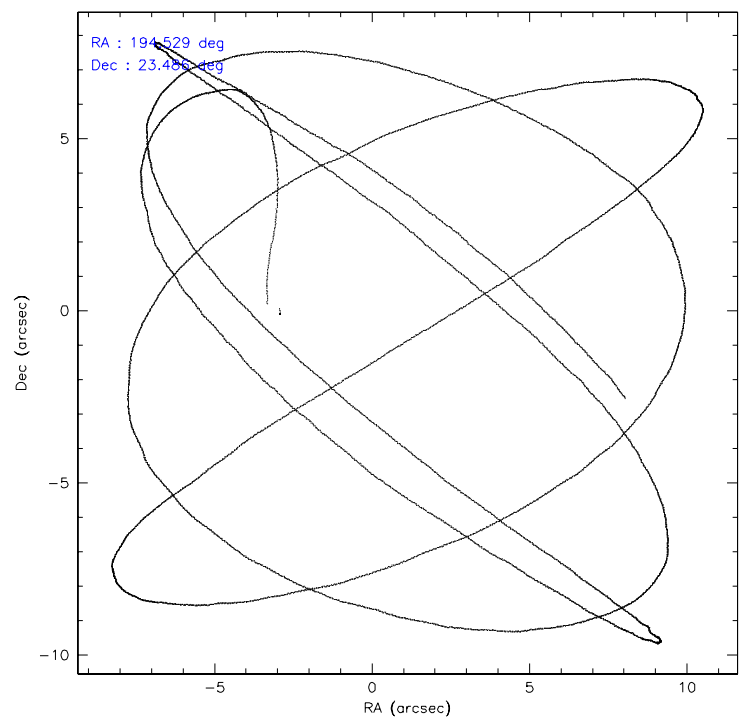
	ccd 3
level 1 events	9215
rejected events	8458
rejected %	91%

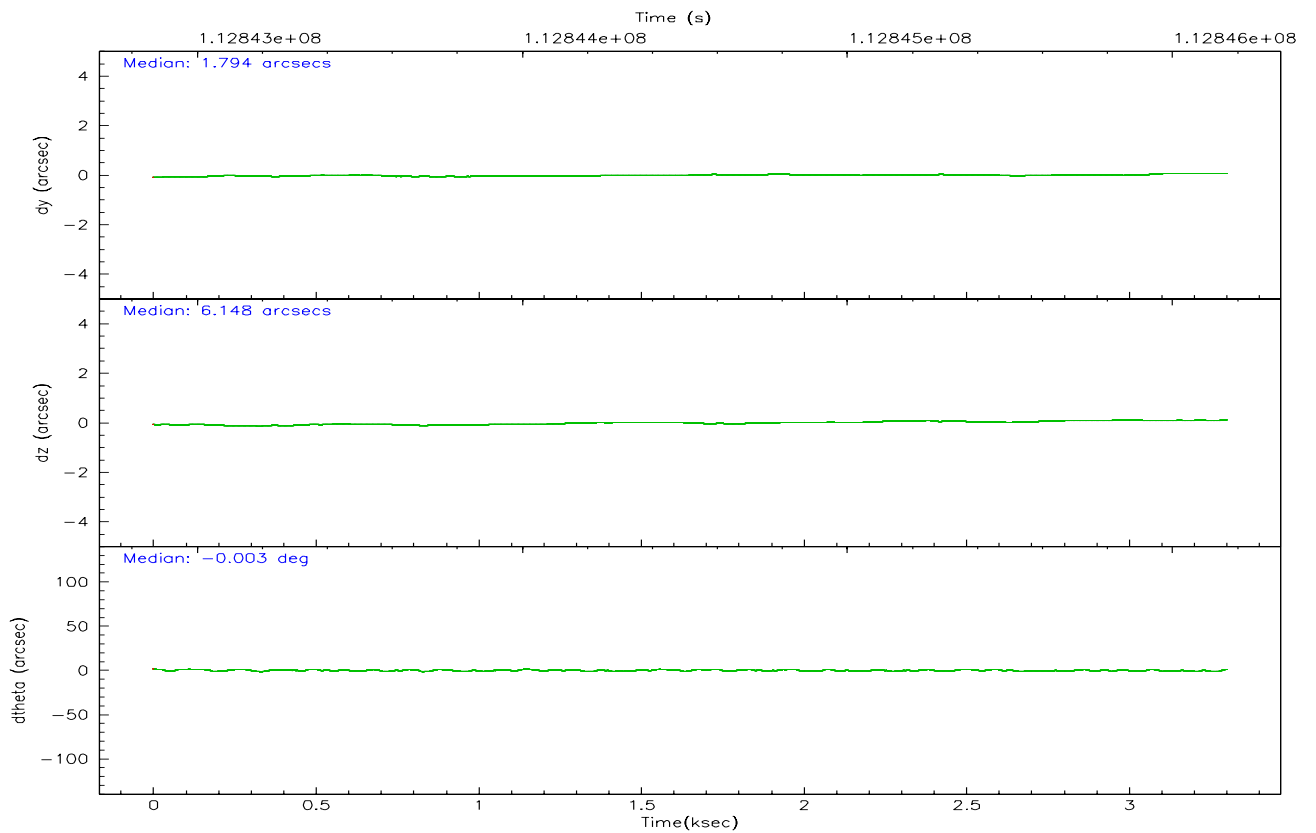
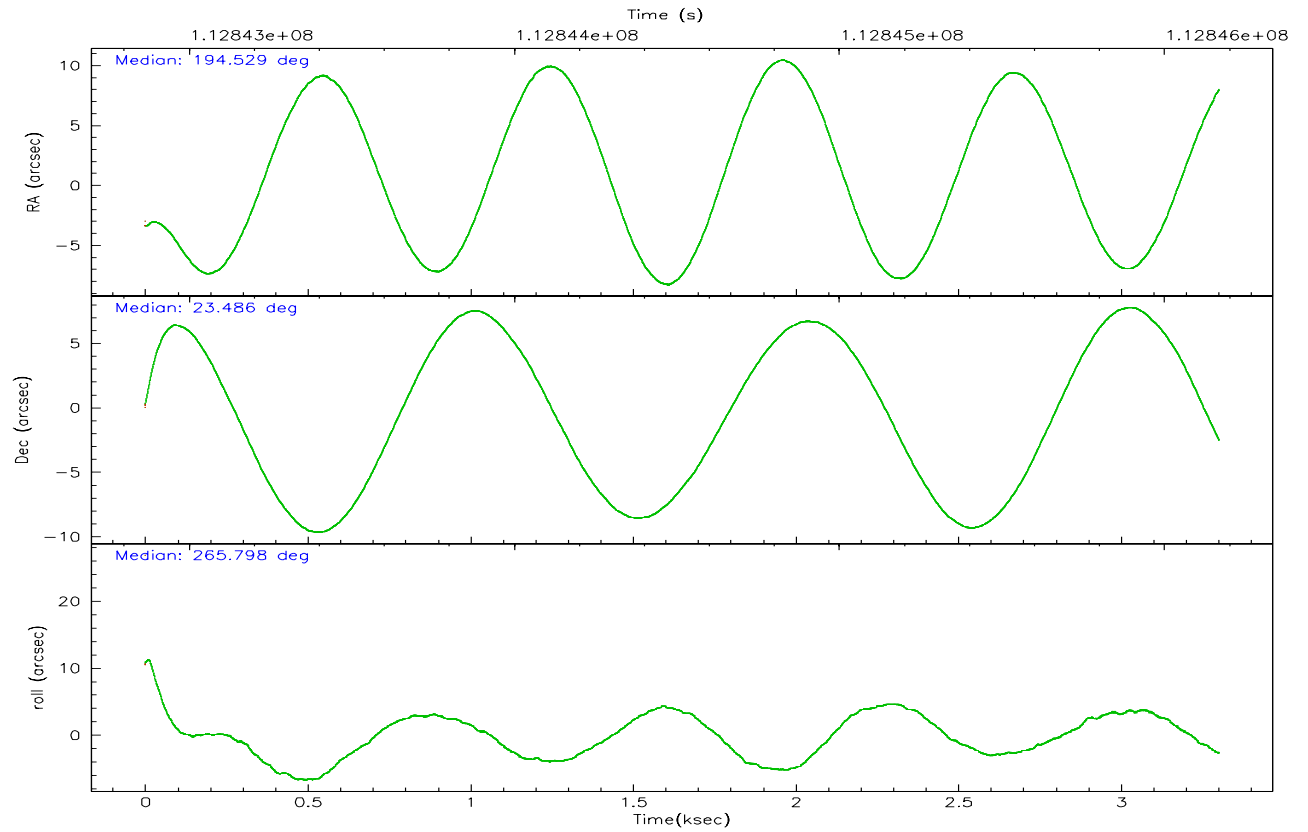
	ccd 3
grade 0 events	330
	3%
grade 1 events	0
	0%
grade 2 events	138
	1%
grade 3 events	174
	1%
grade 4 events	164
	1%
grade 5 events	254
	2%
grade 6 events	137
	1%
grade 7 events	8018
	87%

2.2 Compared Parameters

Parameter	Planned	Actual	Parameter	Planned	Actual
Instrument	ACIS	ACIS	Obspar format version number	6	6
Detector	ACIS-3	ACIS-3	Obspar file type	PREDICTED	ACTUAL
Grating	NONE	NONE	Obspar update status	NONE	UPDATED
Data mode	VFAINT	VFAINT	Number of optional ACIS chips dropped	0	0
Observation mode	POINTING	POINTING	On-chip summing requested	N	N
Pointing RA	194.515833	194.5287508565537	Subarray requested	1/4	1/4
Pointing Dec	23.509780	23.48520843592759	Subarray start row	0	769
Pointing Roll	265.601958	265.8055369230968	Subarray row count	1024	256
SIM focus pos (mm)	-0.782348	-0.7809083437167272	Alternating exposures requested	N	N
SIM defocus (mm)	0	0.001439871863259334	Primary exposure time	0.000000	0.8
SIM translation stage pos (mm)	-233.592463	-233.5874344608287			
SIM translation stage offset (mm)	0	-0.005018542100998502			
Observation start time	112843065.184000	112842047.44242			
Observation start date	2001-07-30T01:16:41	2001-07-30T01:00:47			
Observation end time	112846165.184000	112846502.60509			
Observation end date	2001-07-30T02:08:21	2001-07-30T02:15:02			
Read mode	TIMED	TIMED			

2.3 Aspect



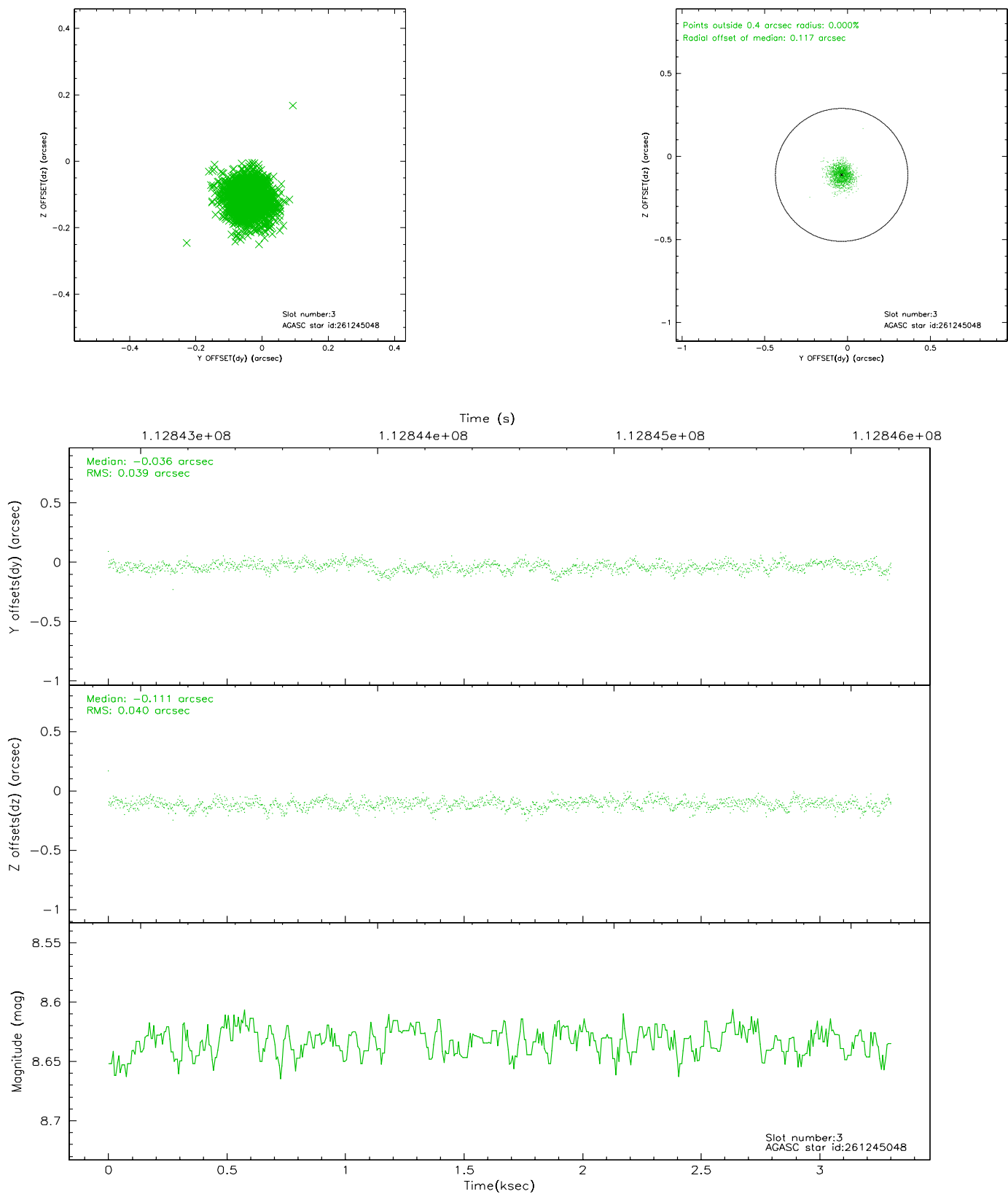


Slot Statistics

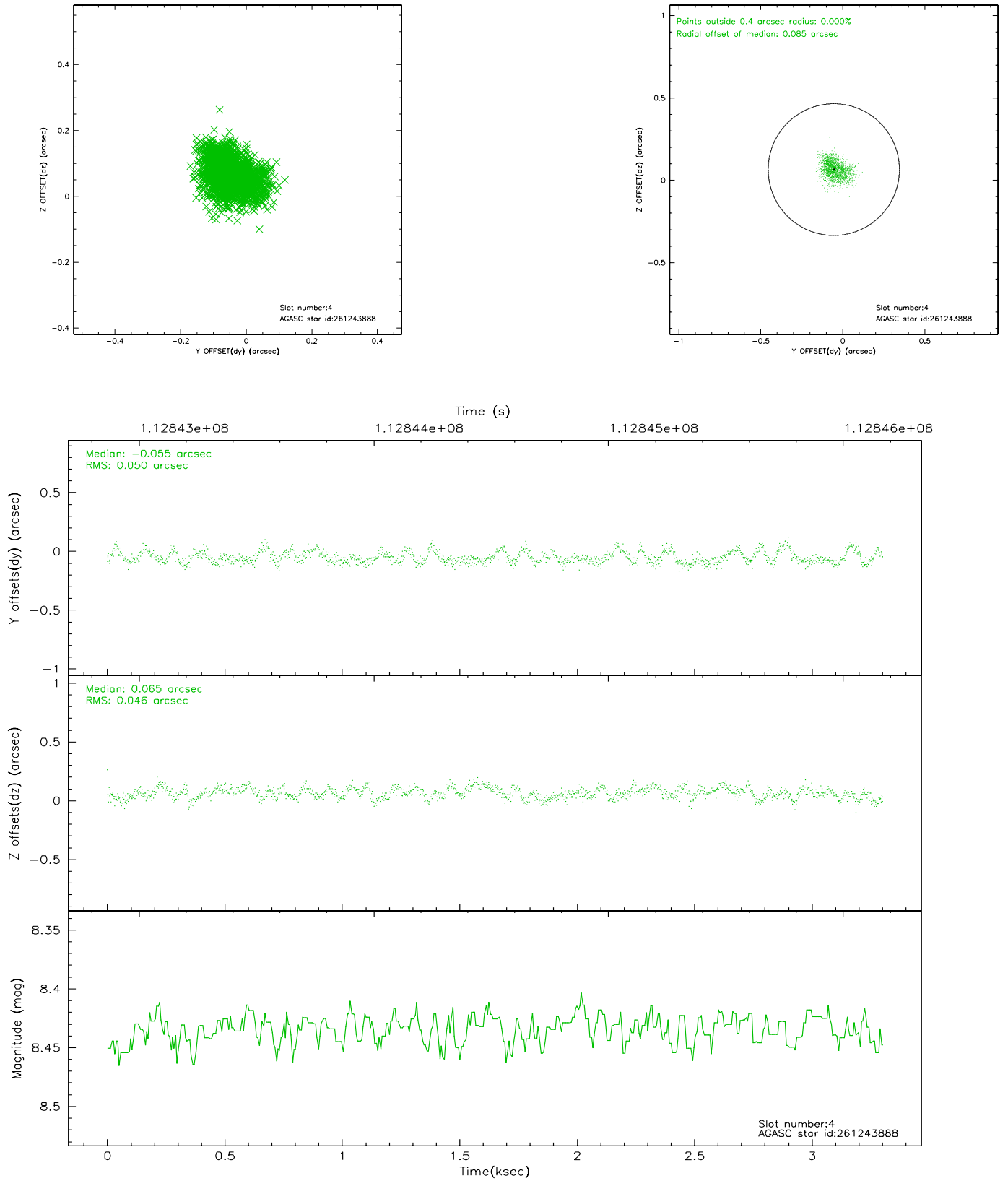
slot	status	id	mag	n_pts	med_dy	med_dz	dr1	dr2	ra	dec	mean_y	mean_z
0	FID	ACIS-I-2	7.15	806	-0.029	-0.051	0.009	0.016	0.000000	0.000000	-756.16	-835.93
1	FID	ACIS-I-4	7.18	806	-0.052	0.039	0.005	0.009	0.000000	0.000000	2157.00	1069.39
2	FID	ACIS-I-5	7.23	806	-0.020	0.081	0.008	0.014	0.000000	0.000000	-1807.51	1069.44
3	GUIDE	261245048	8.63	1612	-0.036	-0.111	0.059	0.096	194.015631	23.574141	-105.84	-1664.27
4	GUIDE	261243888	8.43	1612	-0.055	0.065	0.071	0.116	195.146571	23.651749	-672.75	2032.64
5	GUIDE	261248080	9.83	1612	0.080	0.105	0.113	0.183	194.991498	23.164395	1117.15	1665.85
6	GUIDE	261247520	9.55	1610	-0.144	0.019	0.111	0.186	195.028104	23.710956	-852.98	1628.16
7	GUIDE	261247584	9.68	1611	0.147	-0.082	0.109	0.175	194.489363	22.843643	2398.66	97.08

2.4 Star Slots

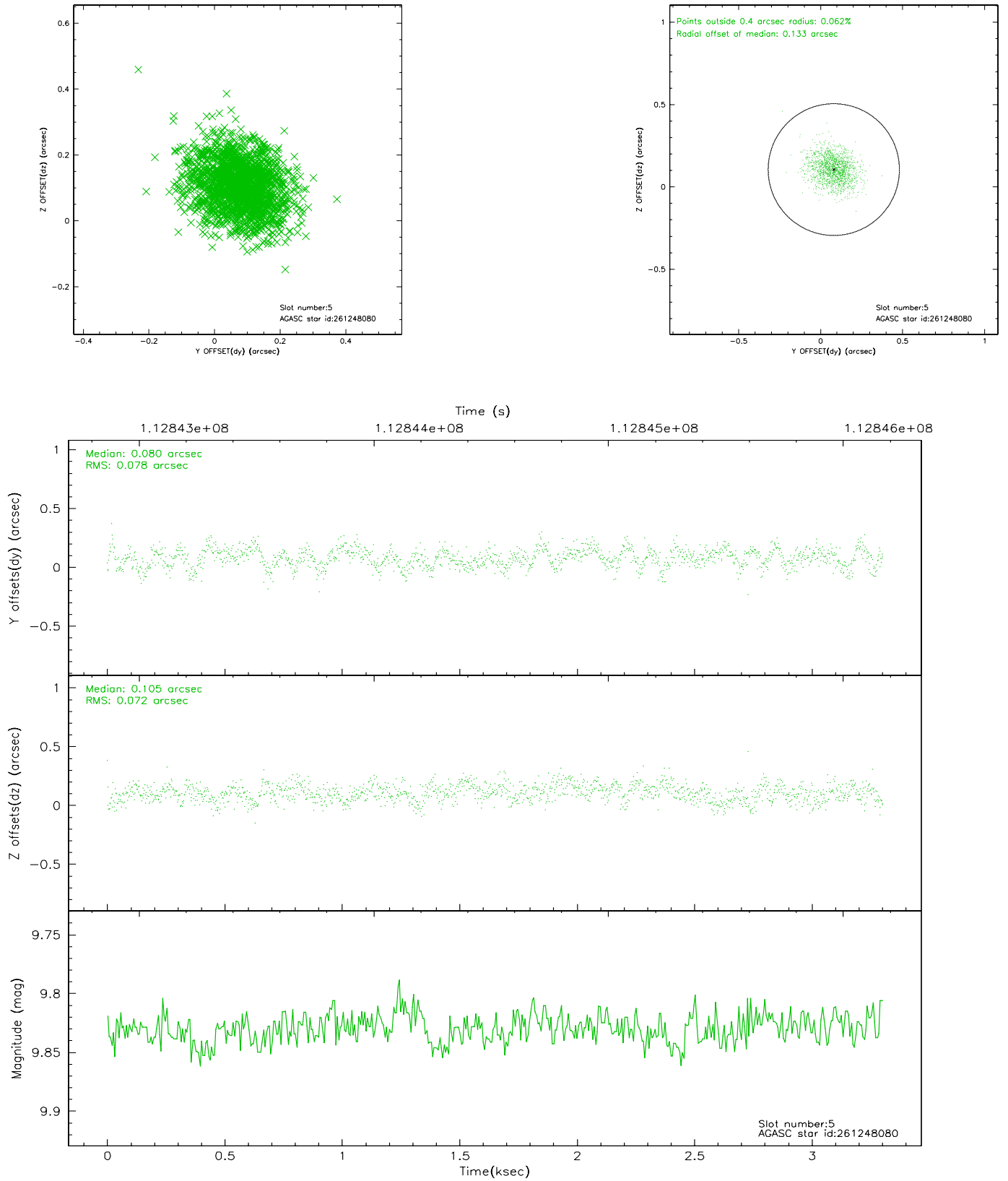
2.4.1 Slot 3



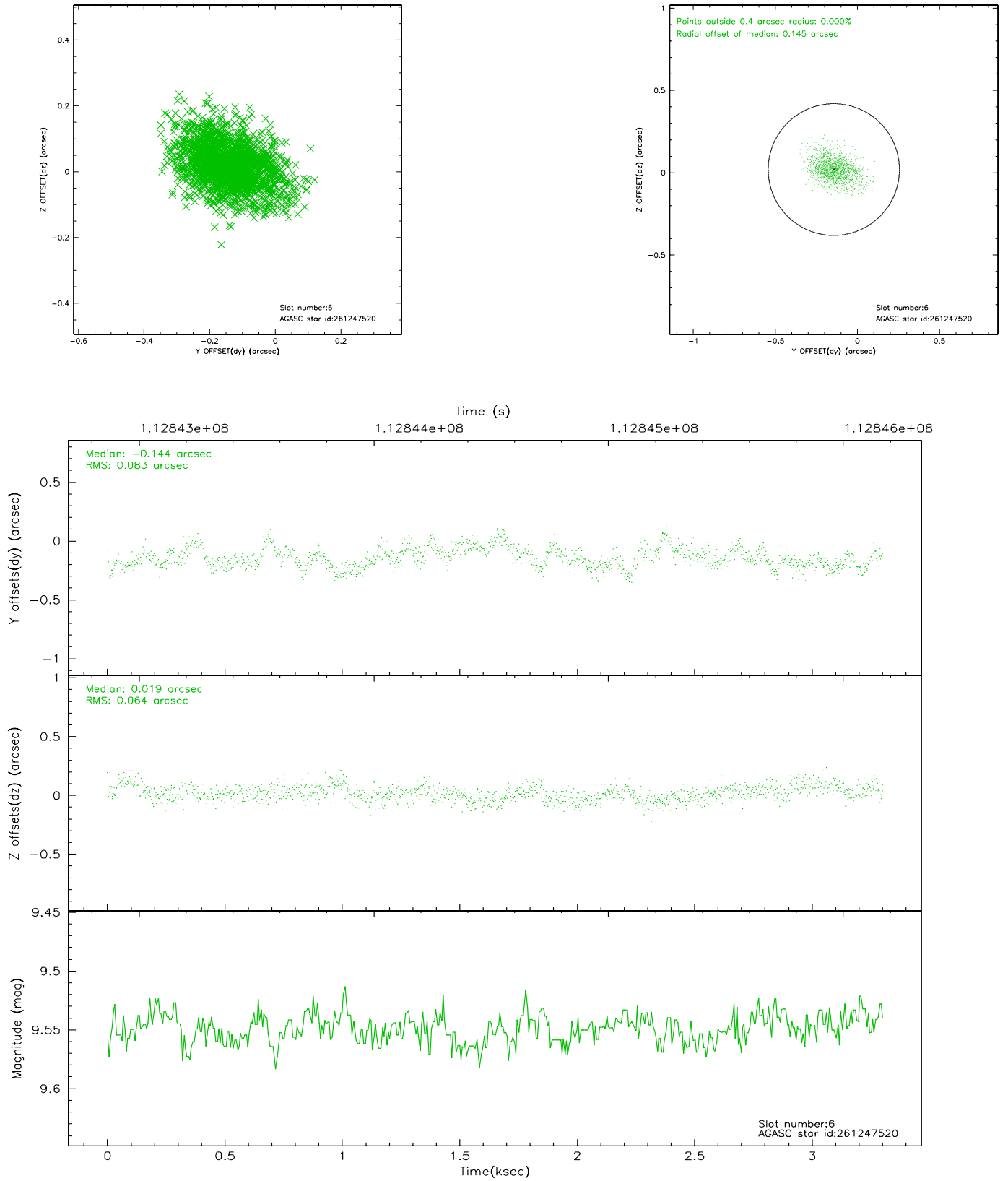
2.4.2 Slot 4



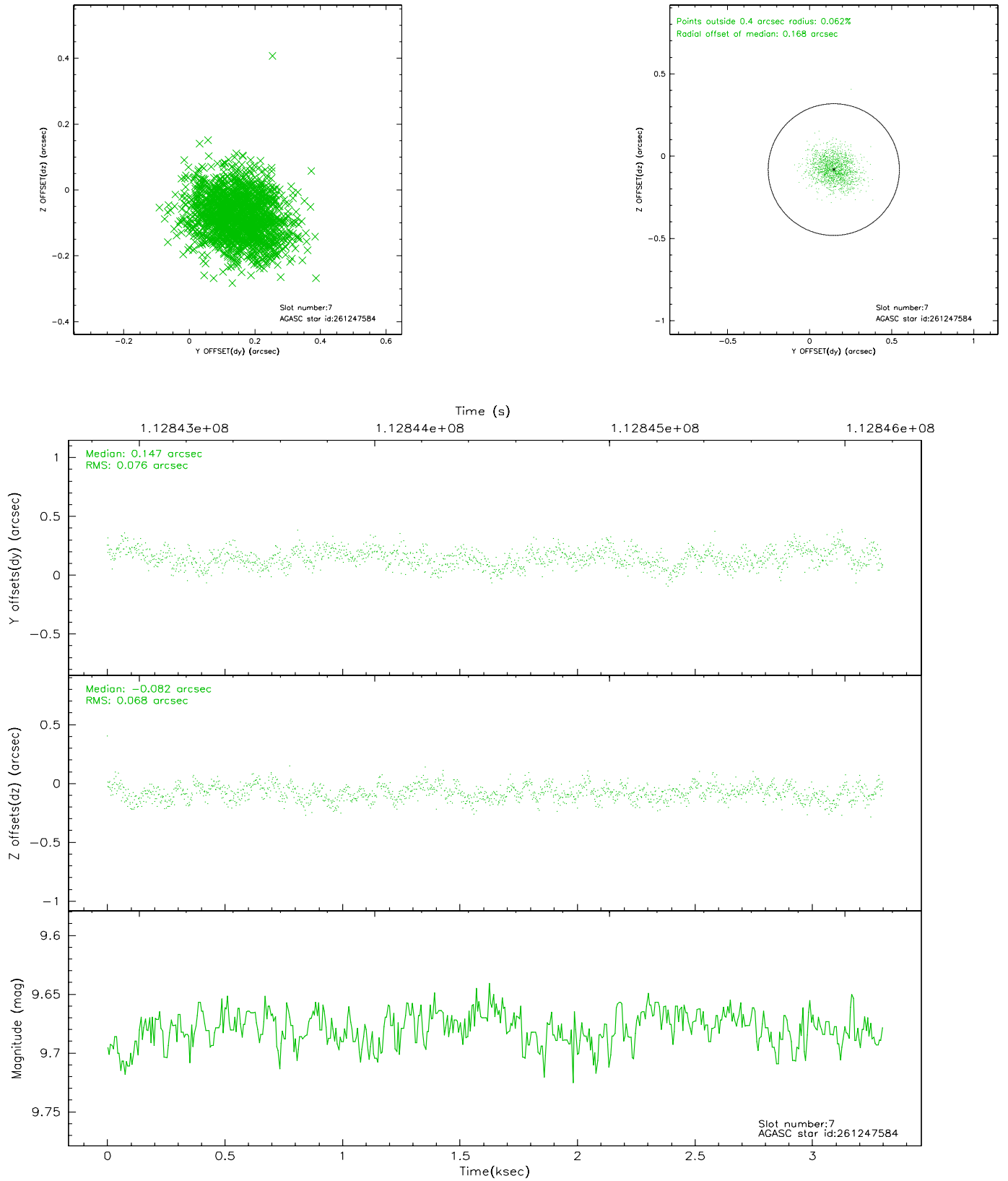
2.4.3 Slot 5



2.4.4 Slot 6

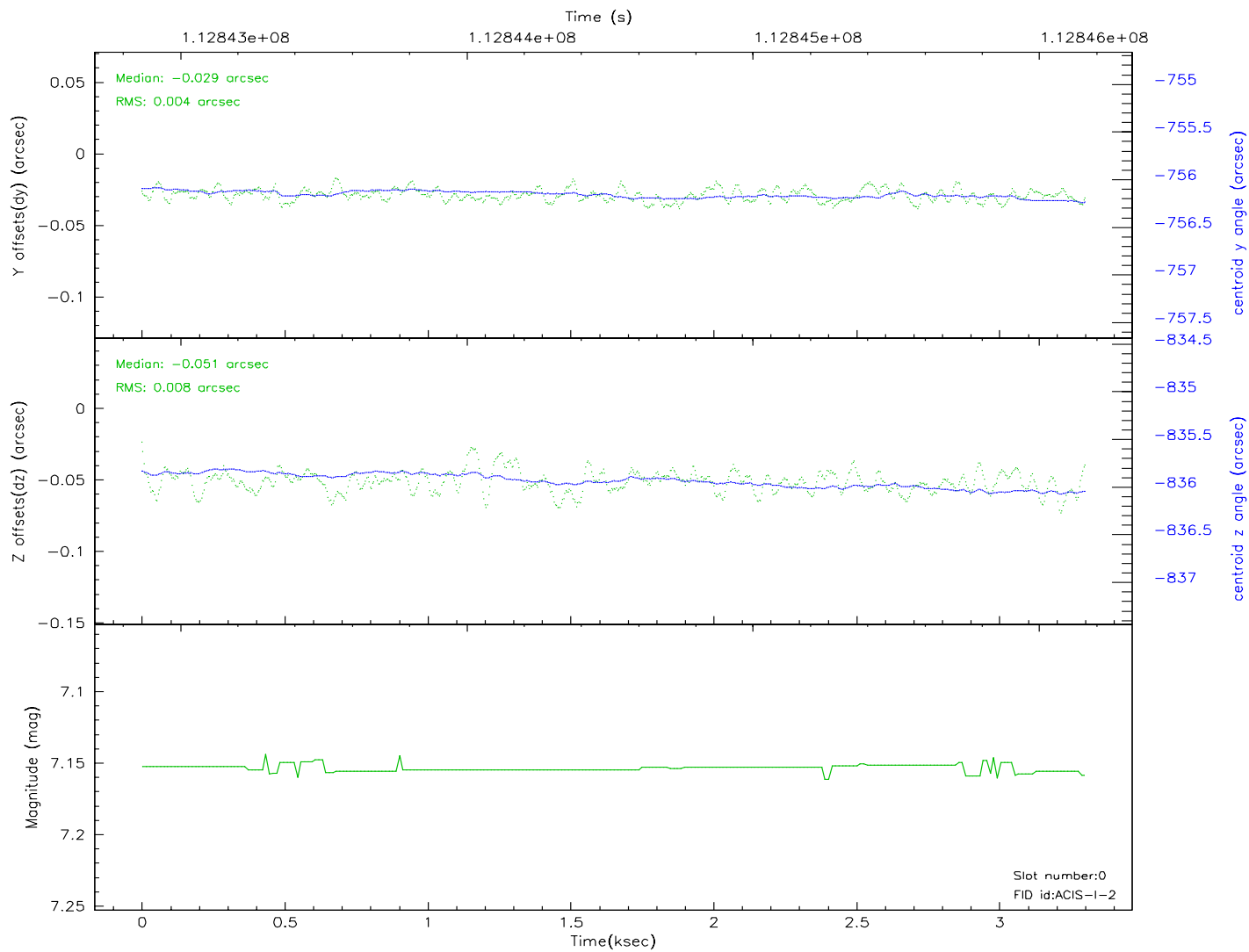
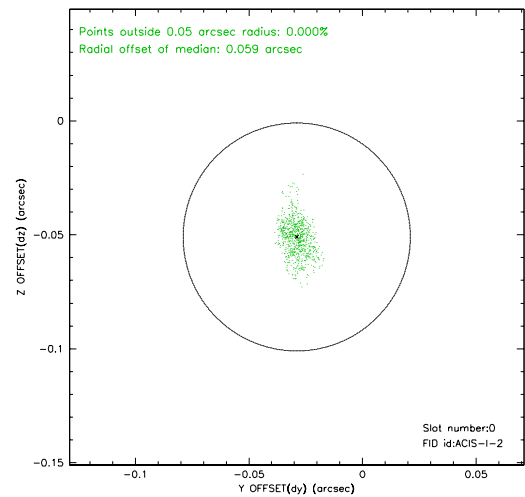
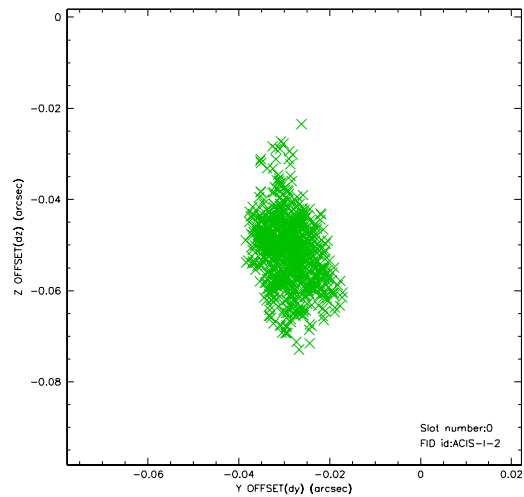


2.4.5 Slot 7

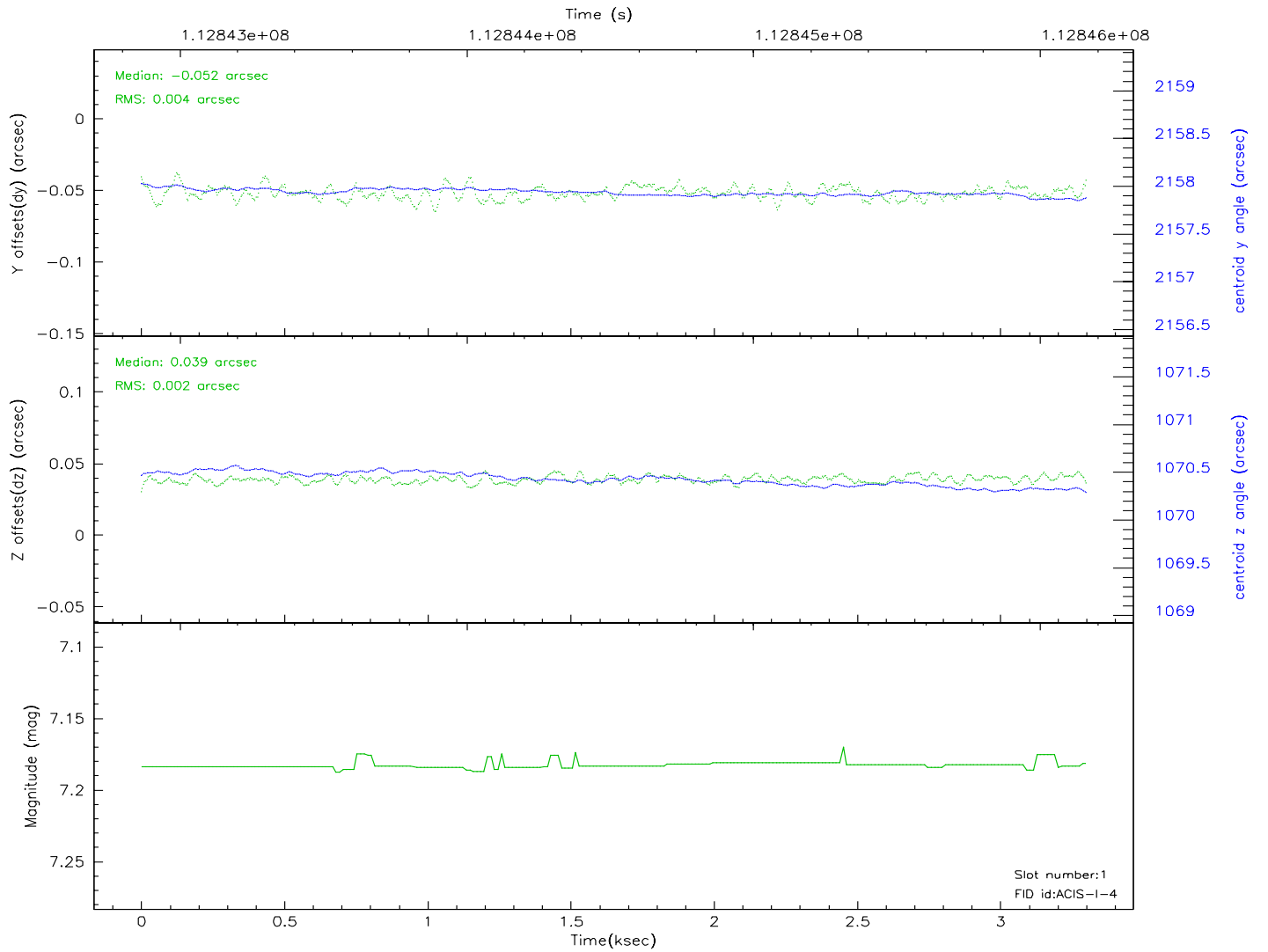
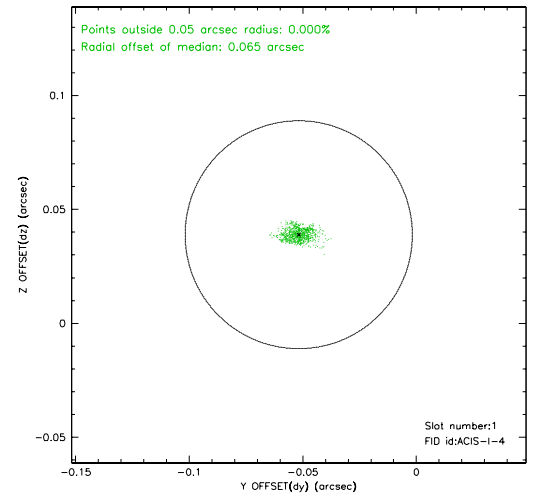
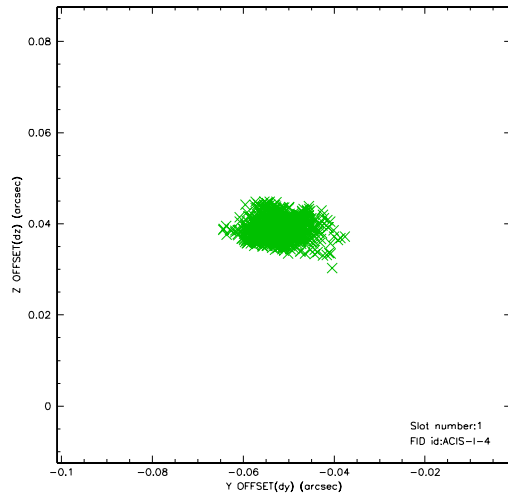


2.5 FID Slots

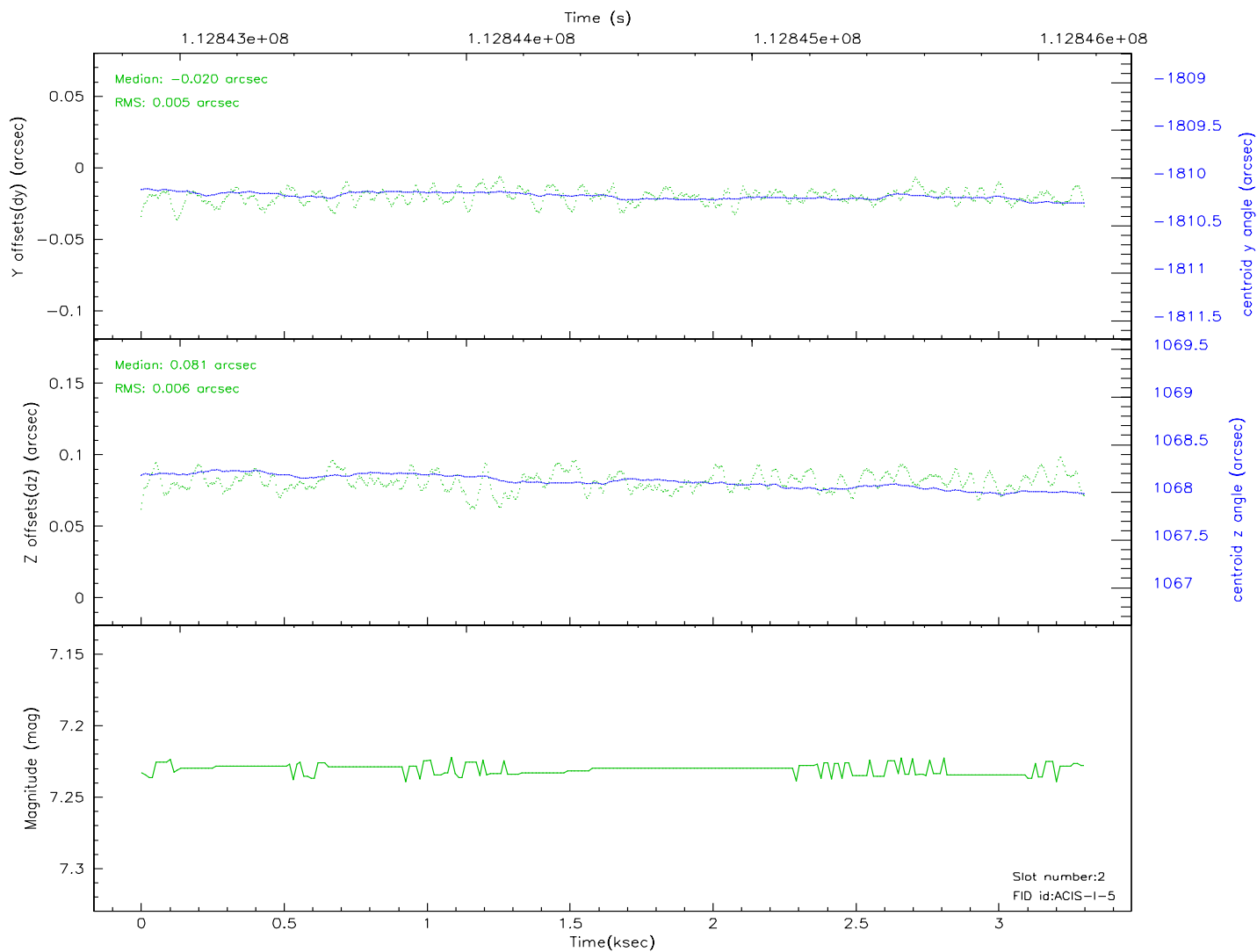
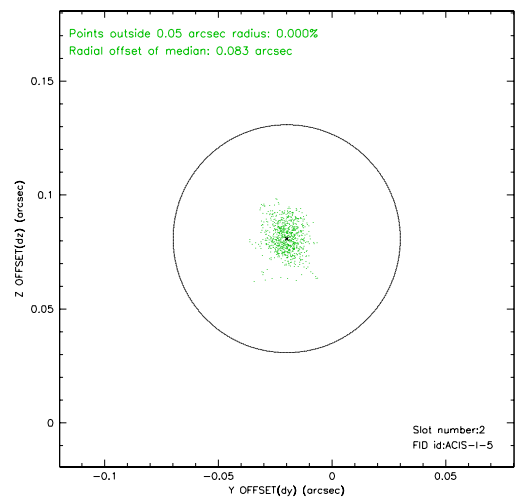
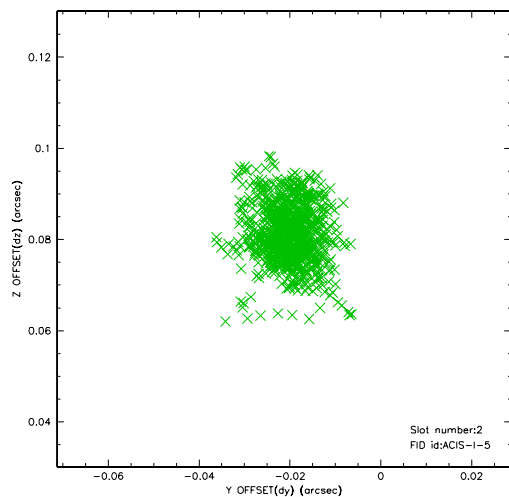
2.5.1 Slot 0



2.5.2 Slot 1



2.5.3 Slot 2



3 Point Sources

A Summary

A.1 Status

V&V Scientist	Beth Sundheim
V&V Date (YYYY-MM-DD)	2006.12.17
V&V Edition	1
V&V Disposition and Status	OK
V&V Charge Time	3.3

A.2 Comments