

V&V Reference Report

L2 ASCDS Version : 7.6.9

Observation 2162 - L2 Version 001
Chandra X-Ray Center

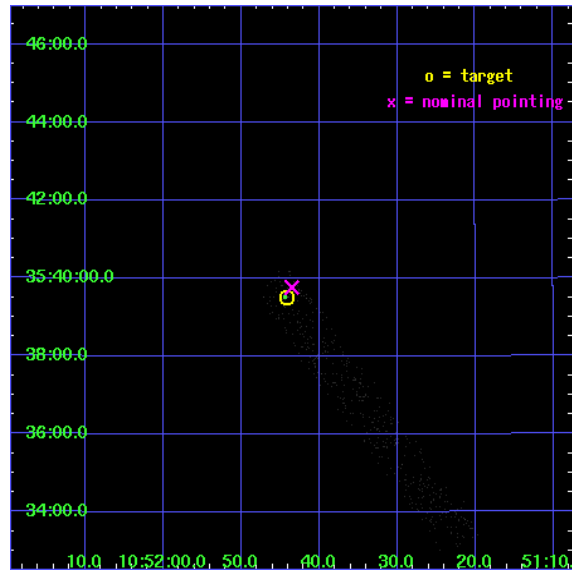
L2 Processing Date : Nov 6 2006

Contents

1	Front	2
2	OBI	3
2.1	OBI	3
2.1.1	Images	3
2.1.2	Bias	3
2.1.3	Parameters	4
2.1.4	Events	4
2.2	Compared Parameters	5
2.3	Aspect	6
2.4	Star Slots	9
2.4.1	Slot 3	9
2.4.2	Slot 4	10
2.4.3	Slot 5	11
2.4.4	Slot 6	12
2.4.5	Slot 7	13
2.5	FID Slots	14
2.5.1	Slot 0	14
2.5.2	Slot 1	15
2.5.3	Slot 2	16
3	Point Sources	17
A	Summary	18
A.1	Status	18
A.2	Comments	18

1 Front

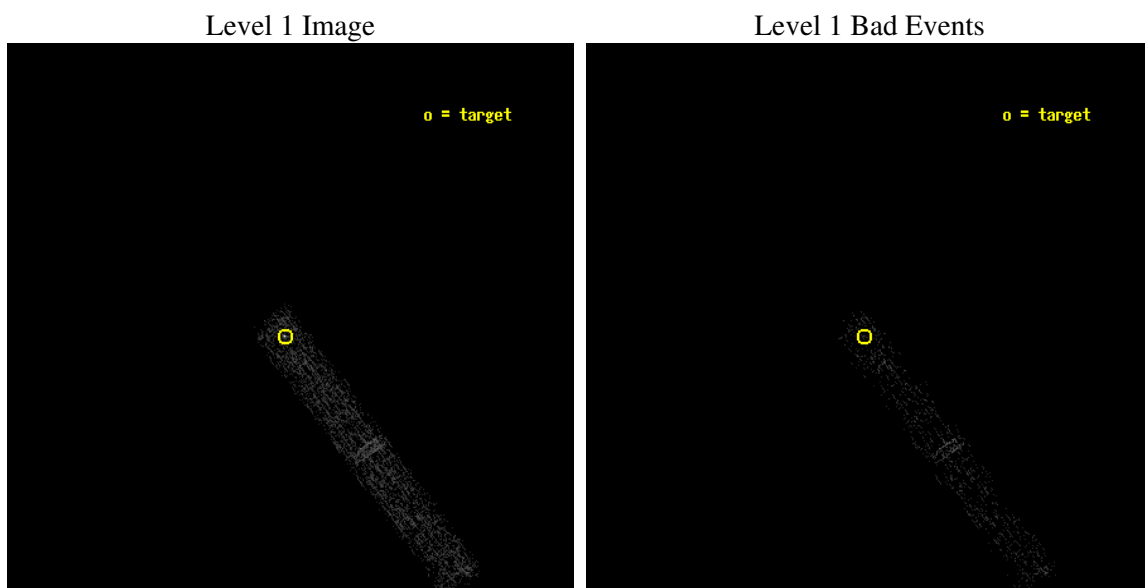
seq_num	700352
obs_id	2162
title	RED QUASARS AND THE X-RAY BACKGROUND
observer	Dr. BELINDA WILKES
object	2MASSJ105144+3539
dtcycle	0
cycle	P
ra_targ	162.934167
dec_targ	35.658528
ra_nom	162.93136245974
dec_nom	35.662580564095
roll_nom	143.68747121227
revision	2
ontime	4447.5
livetime	4110.1397308887
ontime3	4447.5
l2events	934



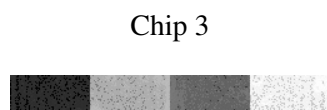
2 OBI

2.1 OBI

2.1.1 Images



2.1.2 Bias



2.1.3 Parameters

obi_num	0
ascdsver	7.6.9
caldsver	3.2.3
date	2006-11-06T18:23:50
revision	2

sched_exp_time	4351.126000
ontime	5117.6390269399
ontime3	5117.6390269399
l1events	6961

2.1.4 Events

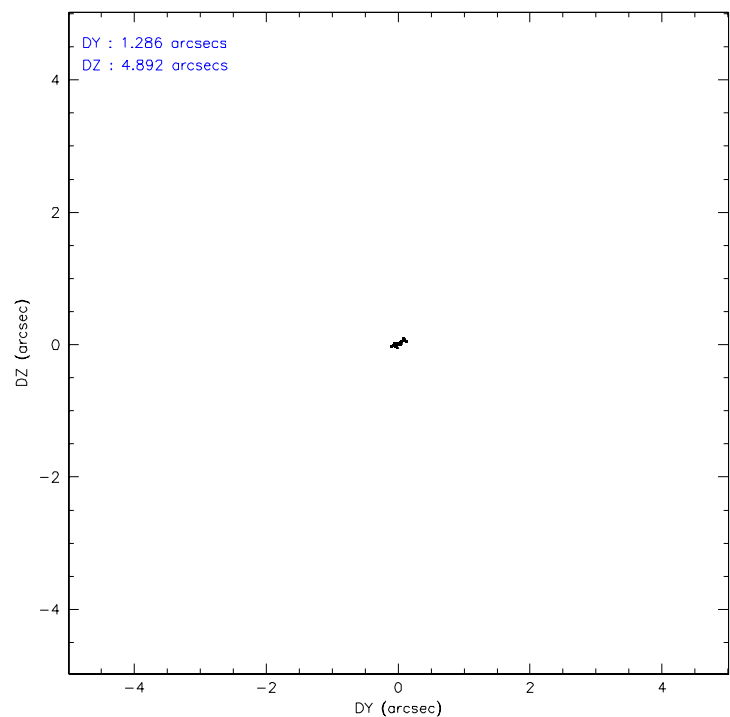
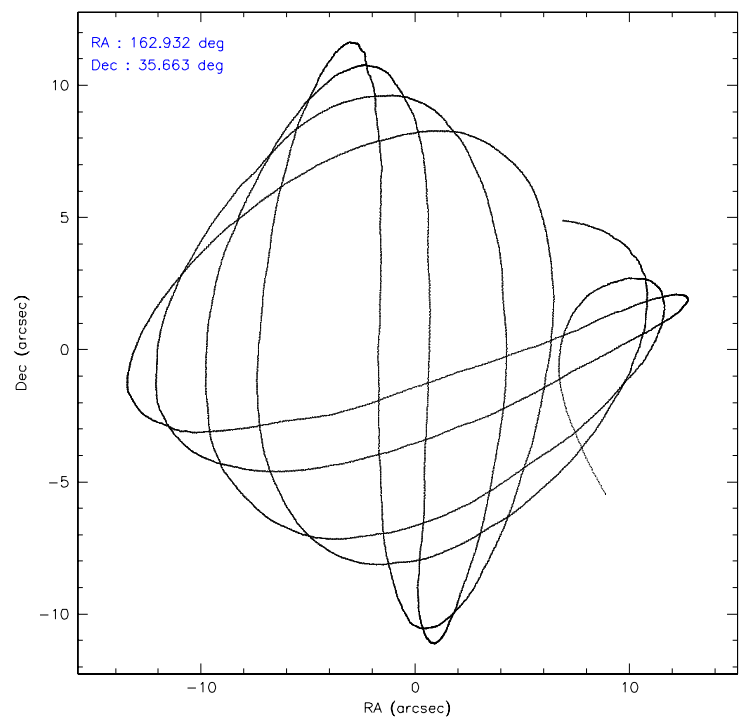
	ccd 3
level 1 events	6961
rejected events	5905
rejected %	84%

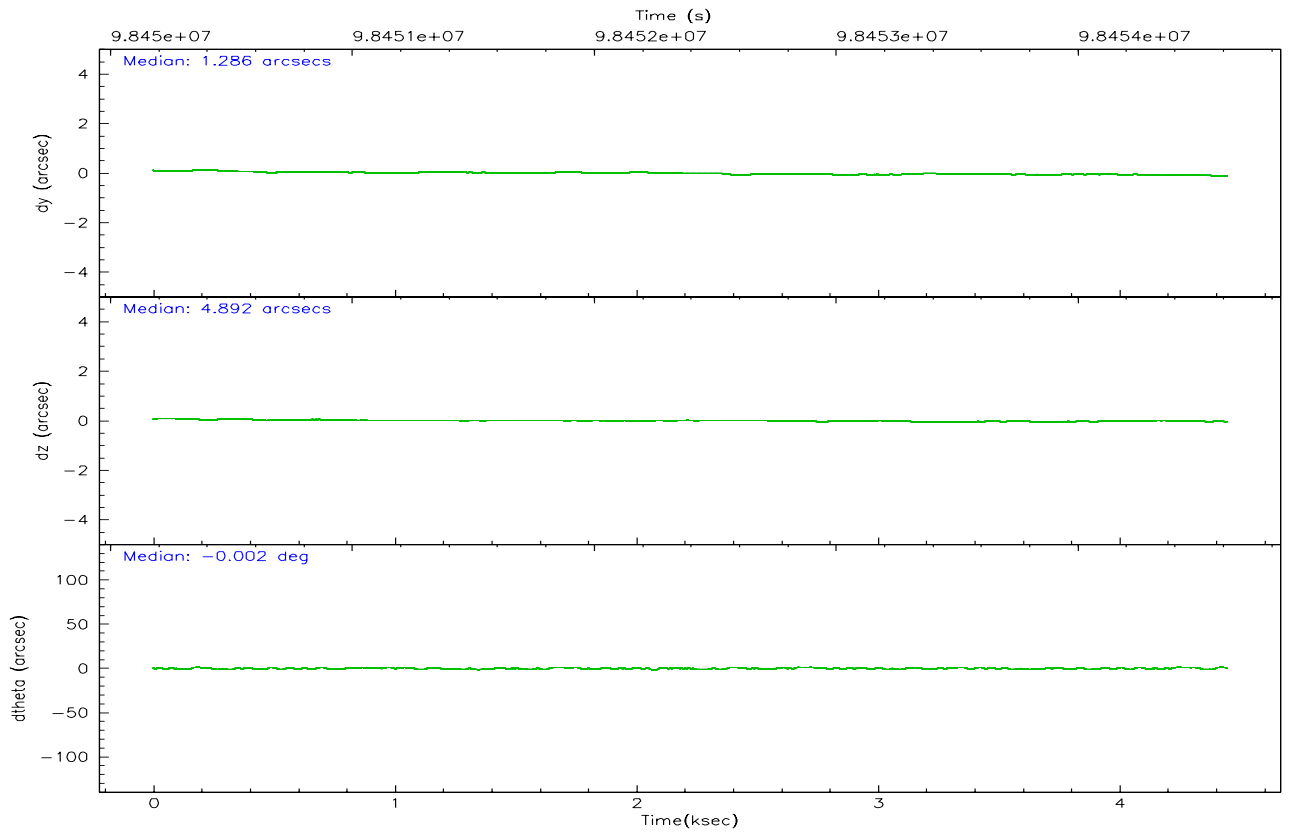
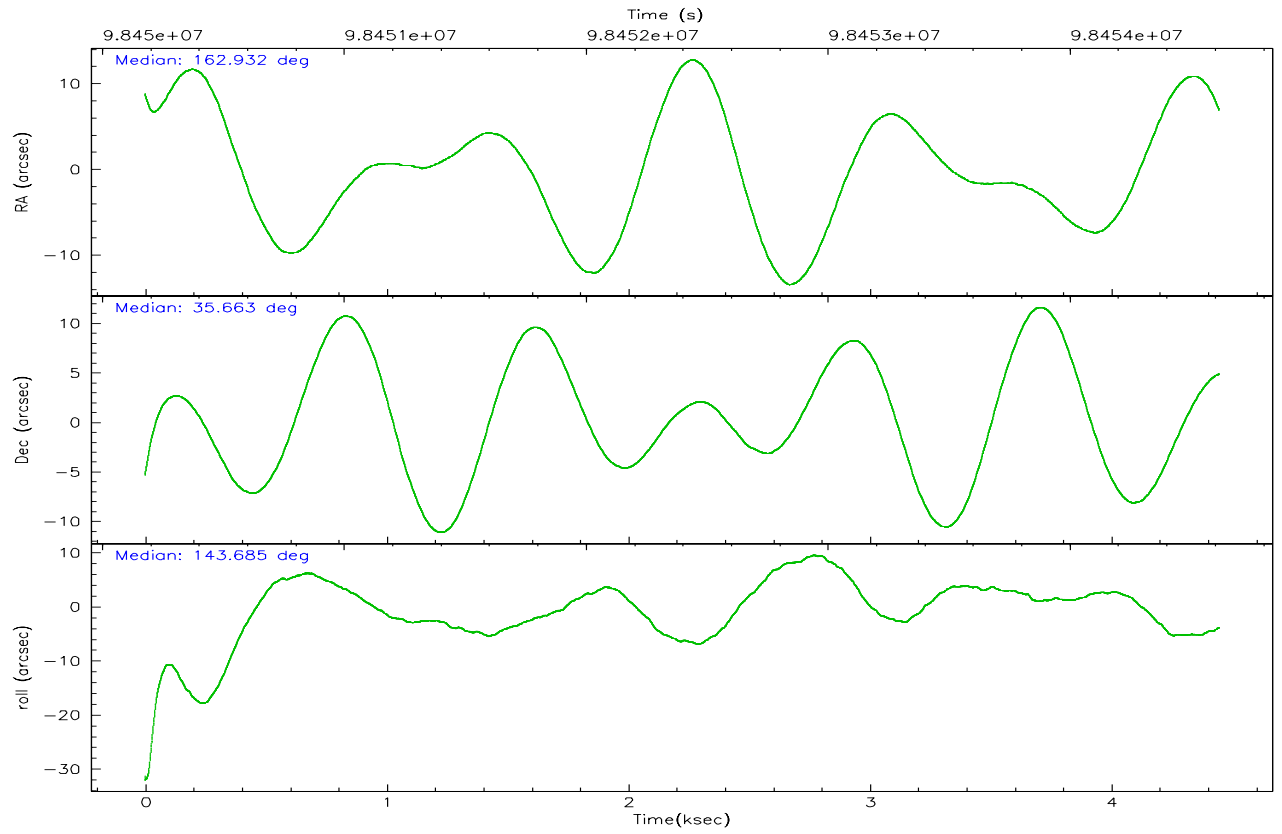
	ccd 3
grade 0 events	610
	8%
grade 1 events	0
	0%
grade 2 events	146
	2%
grade 3 events	148
	2%
grade 4 events	119
	1%
grade 5 events	136
	1%
grade 6 events	115
	1%
grade 7 events	5687
	81%

2.2 Compared Parameters

Parameter	Planned	Actual	Parameter	Planned	Actual
Instrument	ACIS	ACIS	Obspar format version number	6	6
Detector	ACIS-3	ACIS-3	Obspar file type	PREDICTED	ACTUAL
Grating	NONE	NONE	Obspar update status	NONE	UPDATED
Data mode	VFAINT	VFAINT	Number of optional ACIS chips dropped	0	0
Observation mode	POINTING	POINTING	On-chip summing requested	N	N
Pointing RA	162.964771	162.9313624597363	Subarray requested	1/8	1/8
Pointing Dec	35.659607	35.66258056409537	Subarray start row	0	897
Pointing Roll	143.459363	143.6874712122719	Subarray row count	1024	128
SIM focus pos (mm)	-0.782348	-0.7809083437167272	Alternating exposures requested	N	N
SIM defocus (mm)	0	0.001439871863259334	Primary exposure time	0.000000	0.5
SIM translation stage pos (mm)	-233.592463	-233.5874344608287			
SIM translation stage offset (mm)	0	-0.005018542100998502			
Observation start time	98450270.184000	98449352.55812401			
Observation start date	2001-02-13T11:16:46	2001-02-13T11:02:32			
Observation end time	98454621.184000	98454935.733339			
Observation end date	2001-02-13T12:29:17	2001-02-13T12:35:35			
Read mode	TIMED	TIMED			

2.3 Aspect



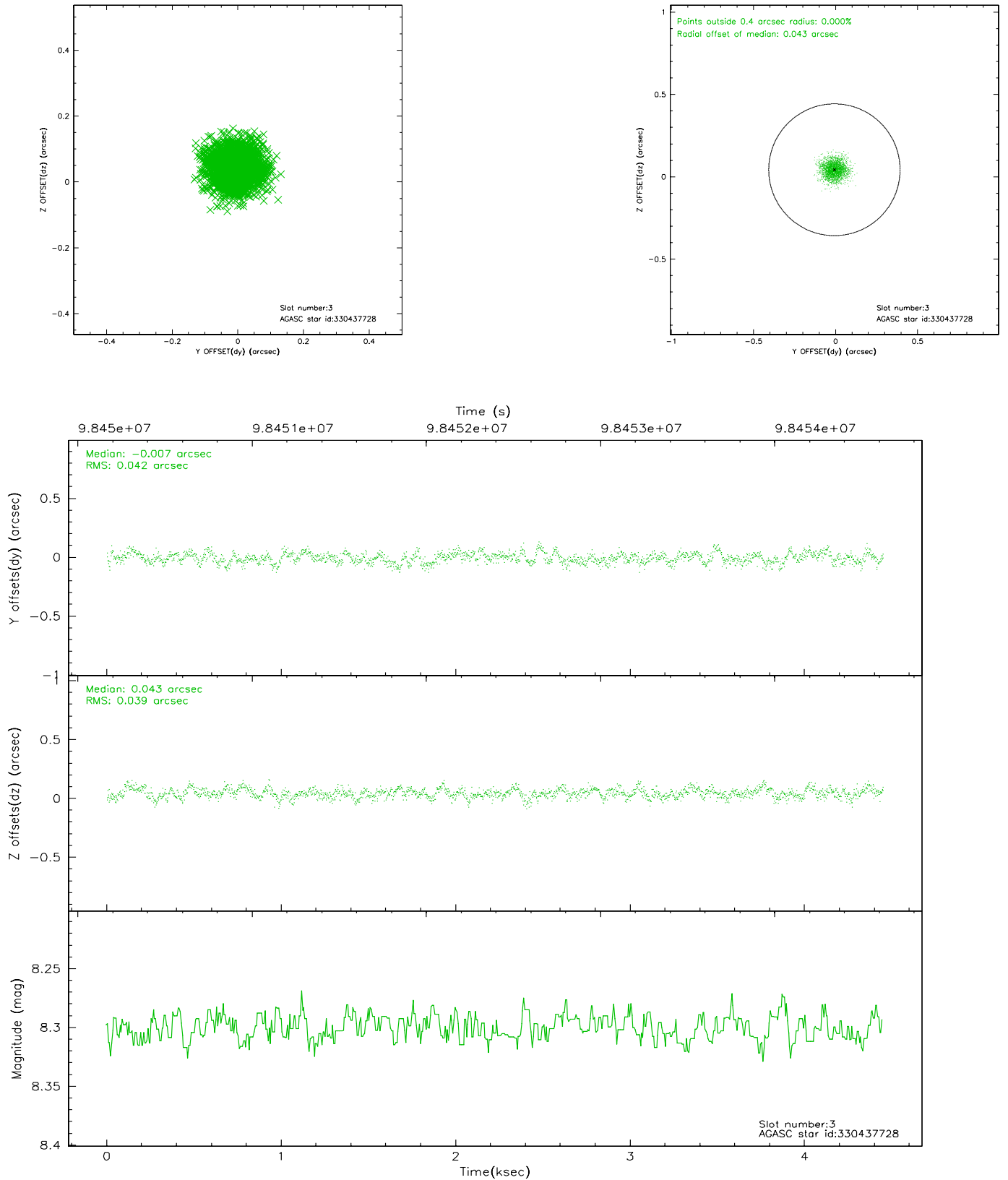


Slot Statistics

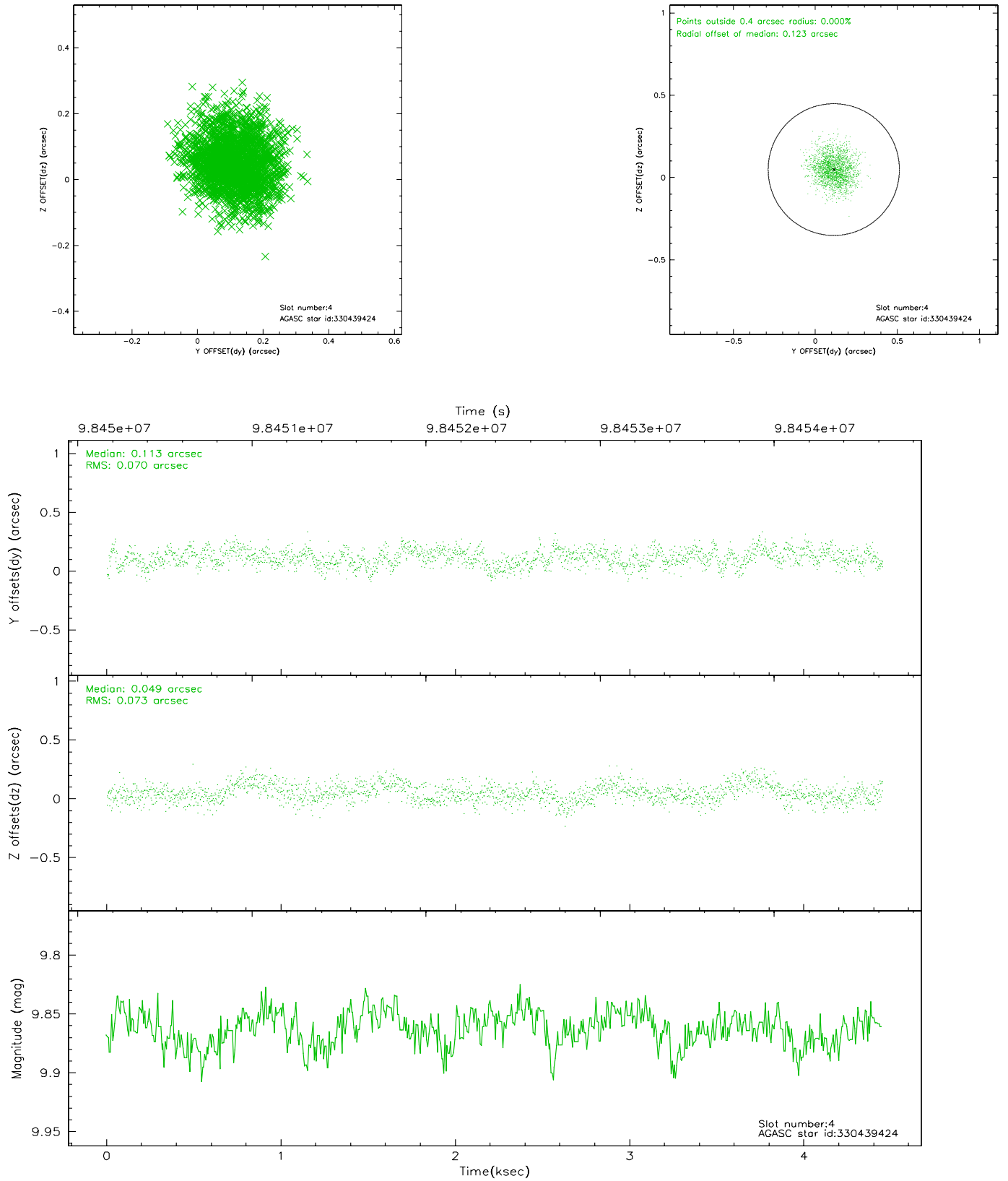
slot	status	id	mag	n_pts	med_dy	med_dz	dr1	dr2	ra	dec	mean_y	mean_z
0	FID	ACIS-I-2	7.15	1083	-0.011	-0.019	0.008	0.014	0.000000	0.000000	-755.62	-834.62
1	FID	ACIS-I-4	7.19	1085	-0.079	0.022	0.005	0.010	0.000000	0.000000	2157.73	1070.92
2	FID	ACIS-I-5	7.23	1086	-0.011	0.067	0.008	0.014	0.000000	0.000000	-1807.67	1070.37
3	GUIDE	330437728	8.30	2171	-0.007	0.043	0.062	0.100	162.533662	36.098078	1949.90	-522.12
4	GUIDE	330439424	9.86	2171	0.113	0.049	0.109	0.175	162.989838	35.535285	-323.64	317.17
5	GUIDE	330439984	9.66	2171	0.090	0.054	0.093	0.152	162.783579	35.838572	809.54	-201.43
6	GUIDE	330436136	10.09	2170	0.071	-0.150	0.115	0.189	162.320122	35.905959	2043.25	403.08
7	GUIDE	330449528	10.17	2169	-0.270	0.001	0.113	0.182	163.167412	35.221402	-1416.18	913.77

2.4 Star Slots

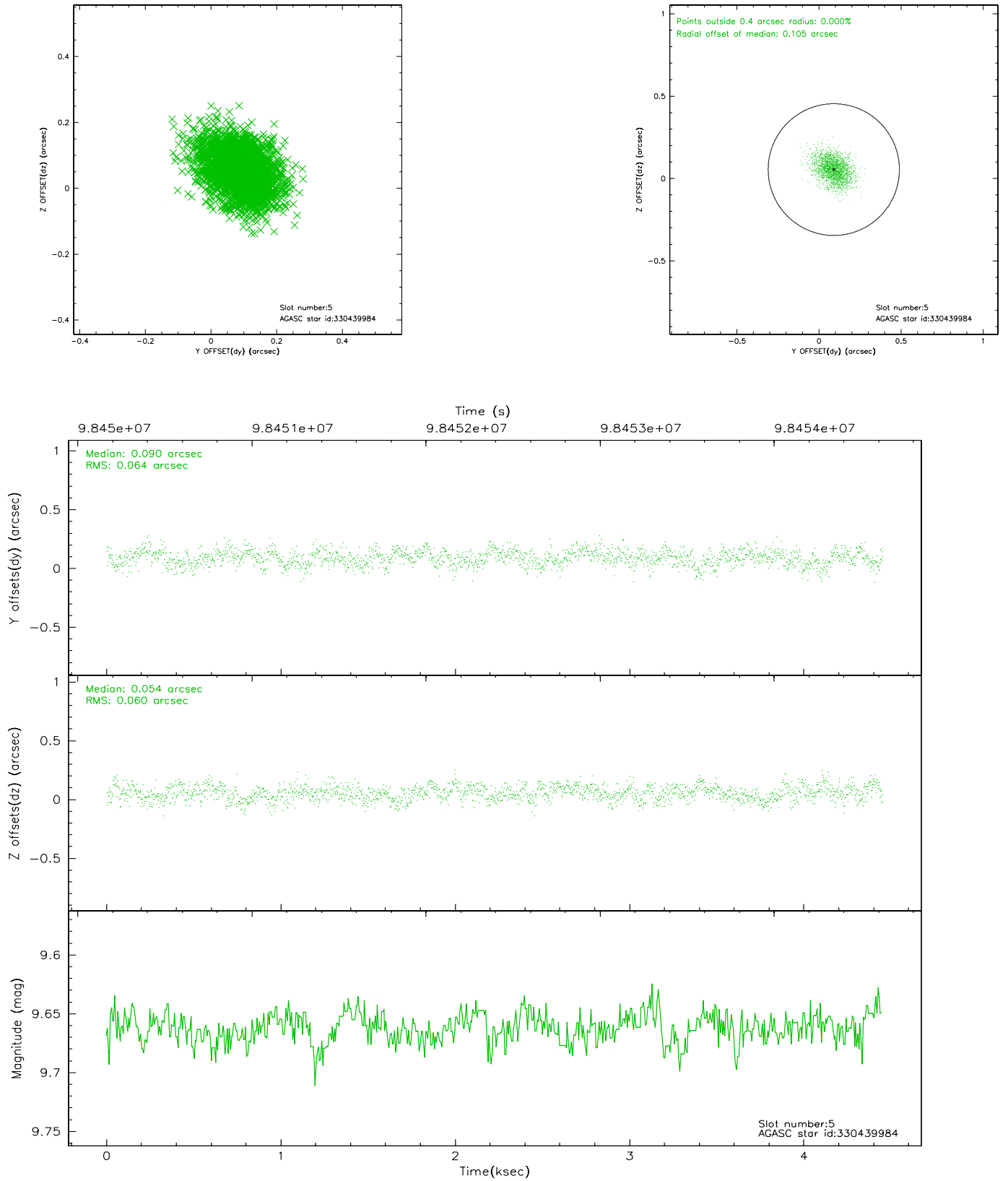
2.4.1 Slot 3



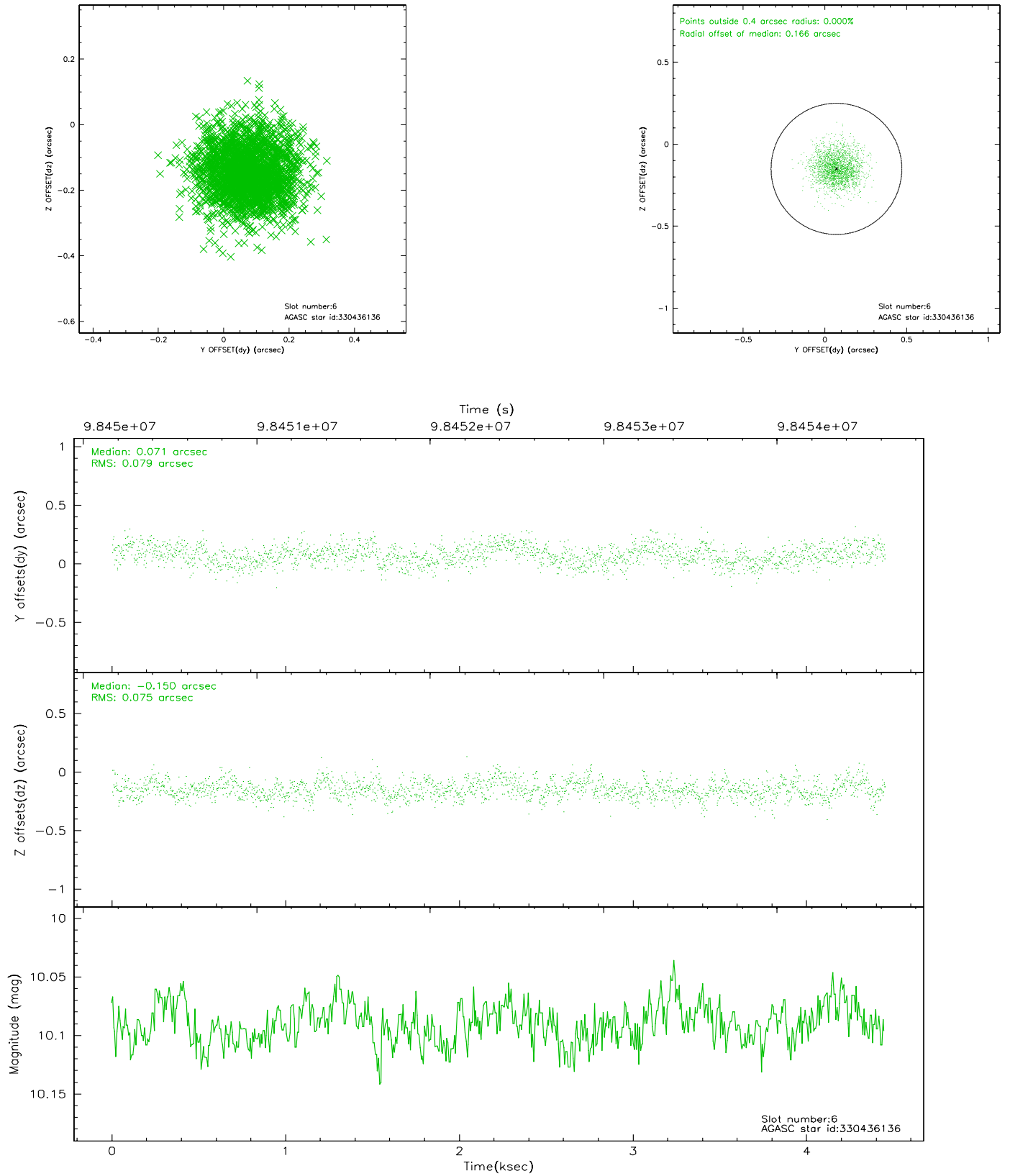
2.4.2 Slot 4



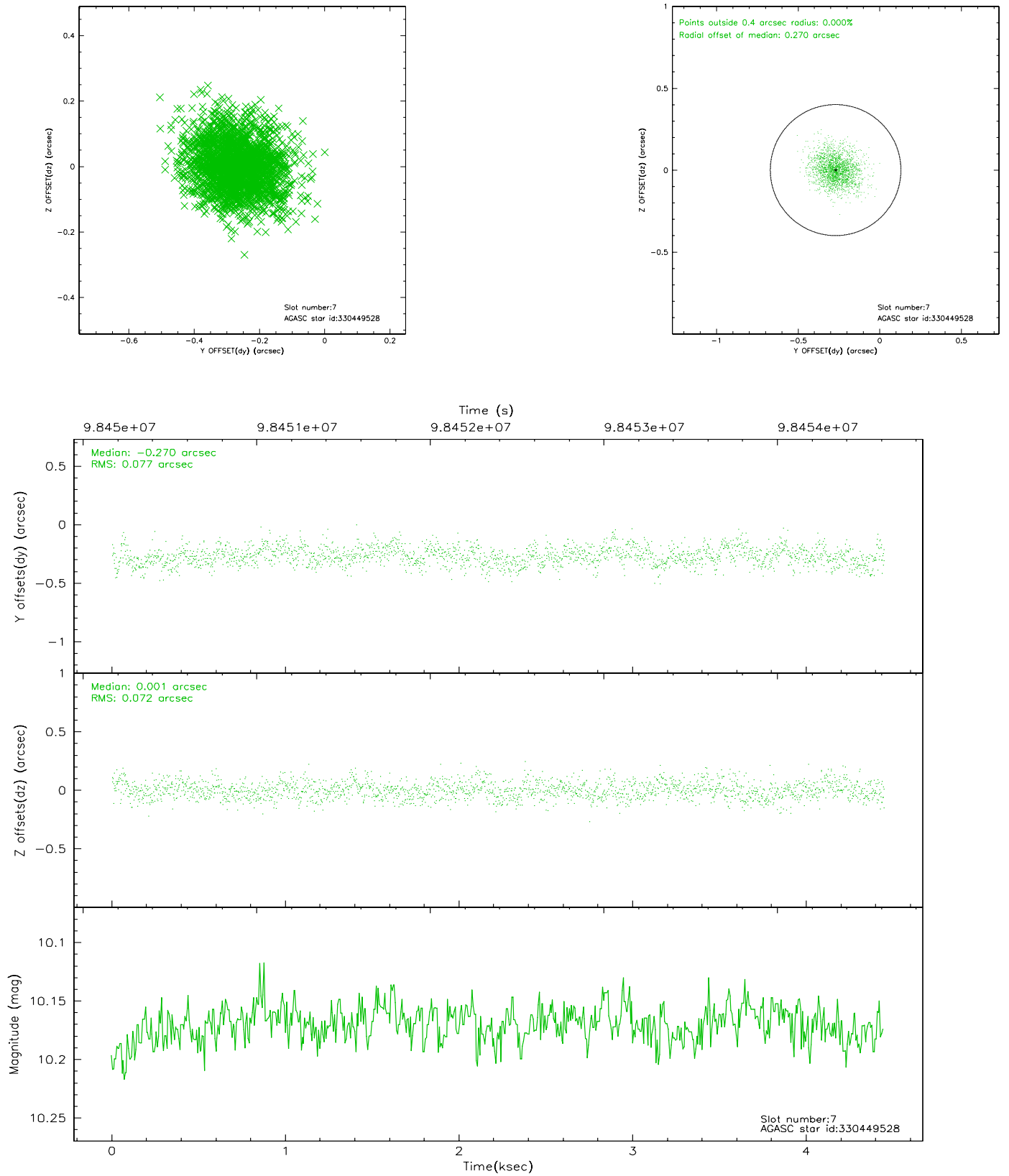
2.4.3 Slot 5



2.4.4 Slot 6

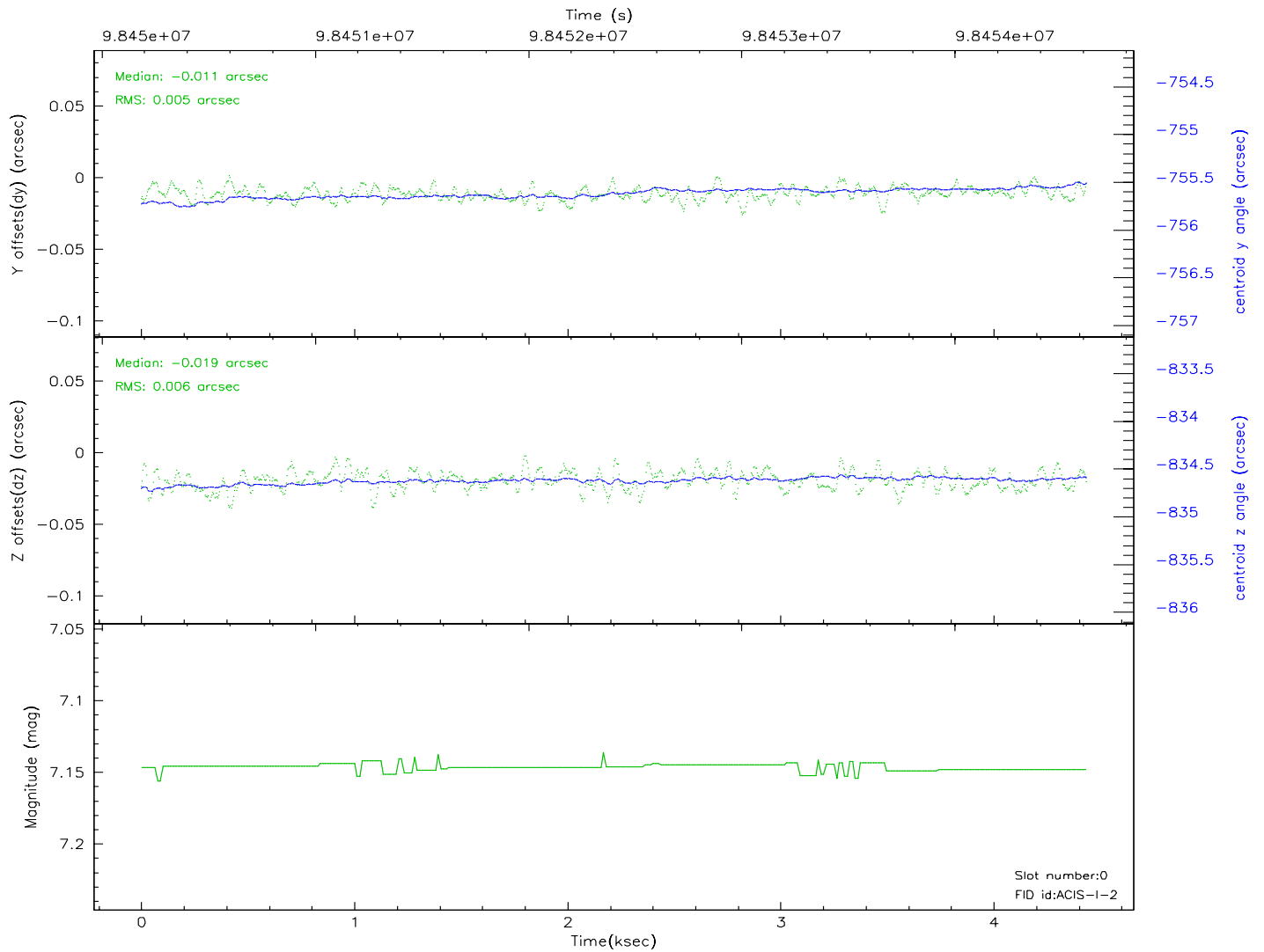
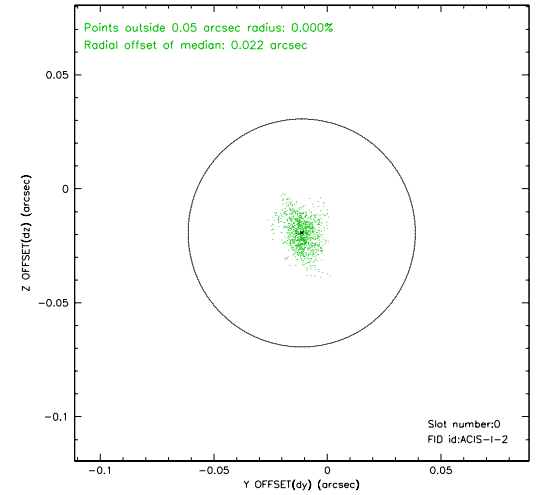
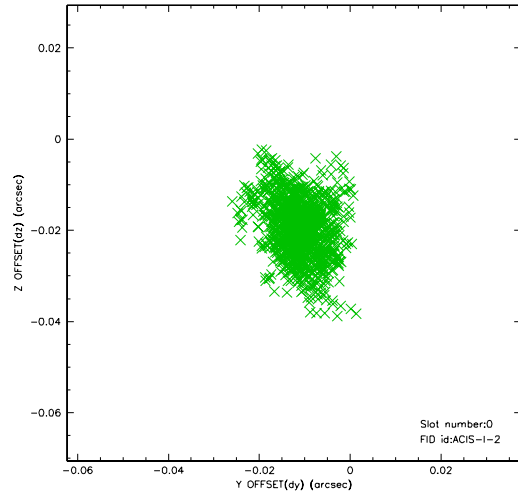


2.4.5 Slot 7

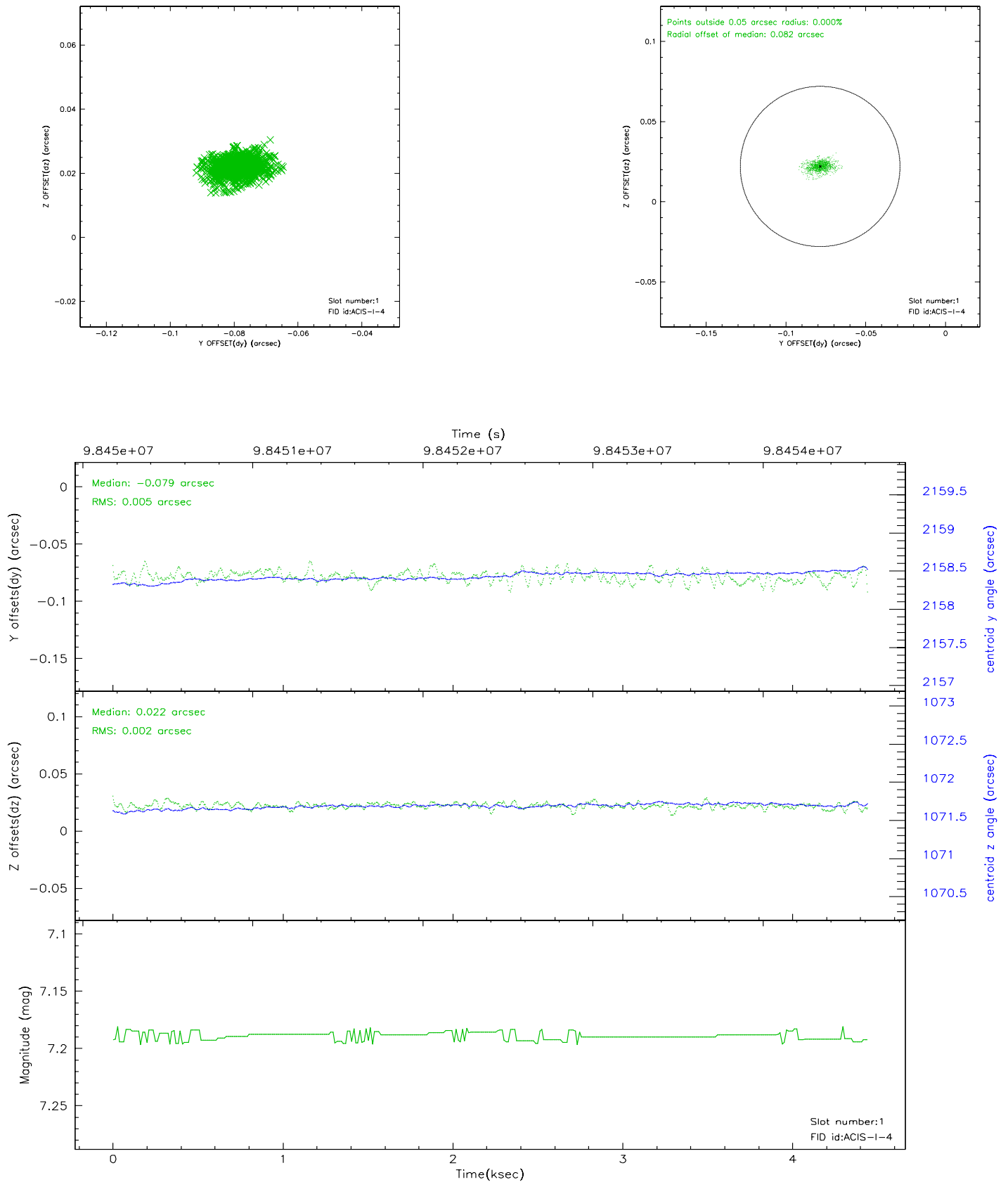


2.5 FID Slots

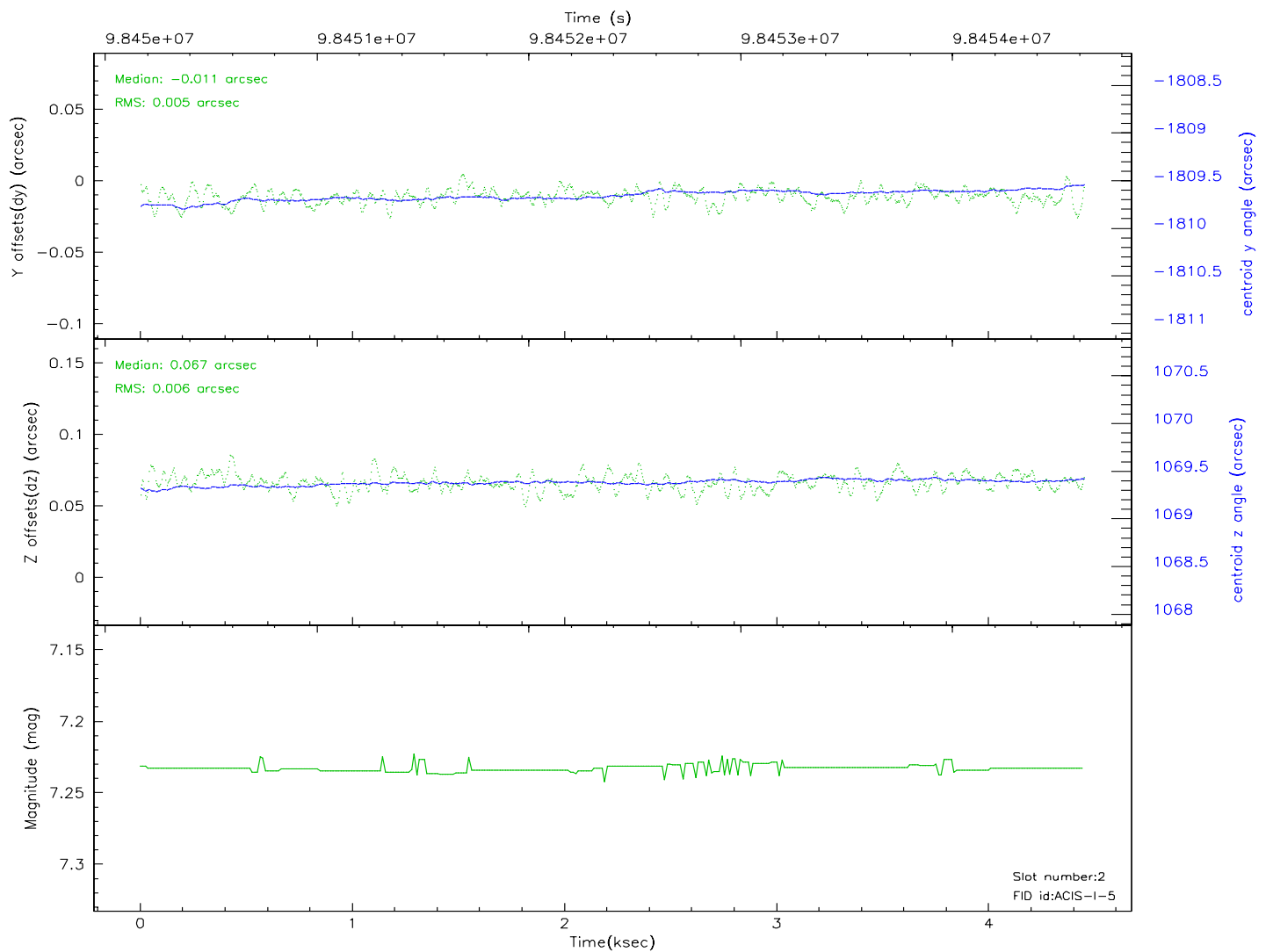
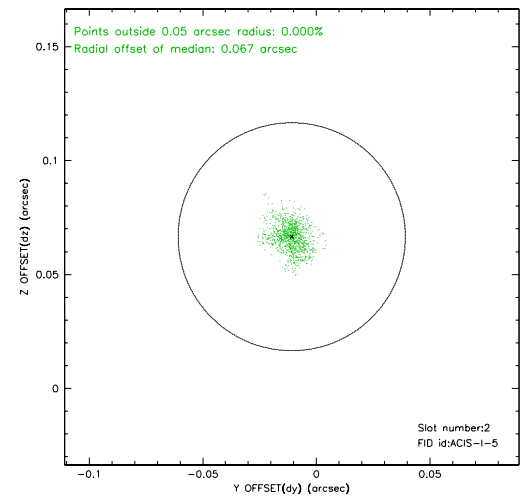
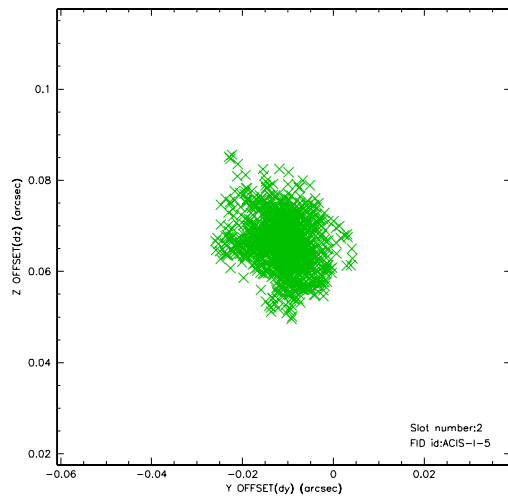
2.5.1 Slot 0



2.5.2 Slot 1



2.5.3 Slot 2



3 Point Sources

A Summary

A.1 Status

V&V Scientist	Jen Lauer
V&V Date (YYYY-MM-DD)	2006.11.06
V&V Edition	1
V&V Disposition and Status	OK
V&V Charge Time	4.435

A.2 Comments

Charge time:

Charge time for this ObsId remains at previous value of 4.435 ks
although with the current processing it would have been 4.447 ksec