

V&V Reference Report

L2 ASCDS Version : 7.6.9

Observation 2156 - L2 Version 001
Chandra X-Ray Center

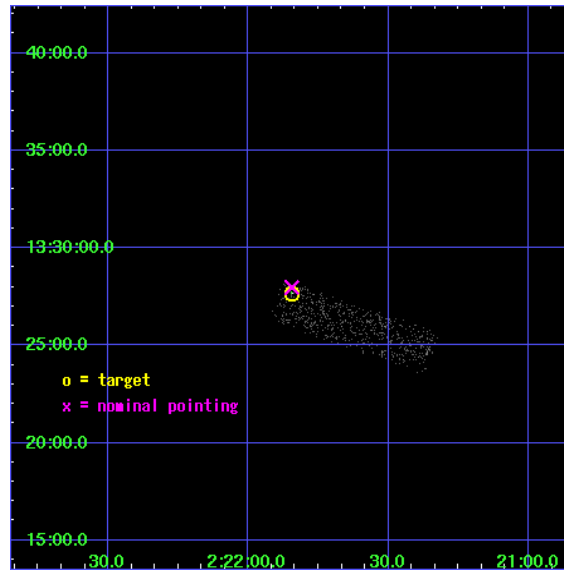
L2 Processing Date : Dec 15 2006

Contents

1	Front	2
2	OBI	3
2.1	OBI	3
2.1.1	Images	3
2.1.2	Bias	3
2.1.3	Parameters	4
2.1.4	Events	4
2.2	Compared Parameters	5
2.3	Aspect	6
2.4	Star Slots	9
2.4.1	Slot 3	9
2.4.2	Slot 4	10
2.4.3	Slot 5	11
2.4.4	Slot 6	12
2.4.5	Slot 7	13
2.5	FID Slots	14
2.5.1	Slot 0	14
2.5.2	Slot 1	15
2.5.3	Slot 2	16
3	Point Sources	17
A	Summary	18
A.1	Status	18
A.2	Comments	18

1 Front

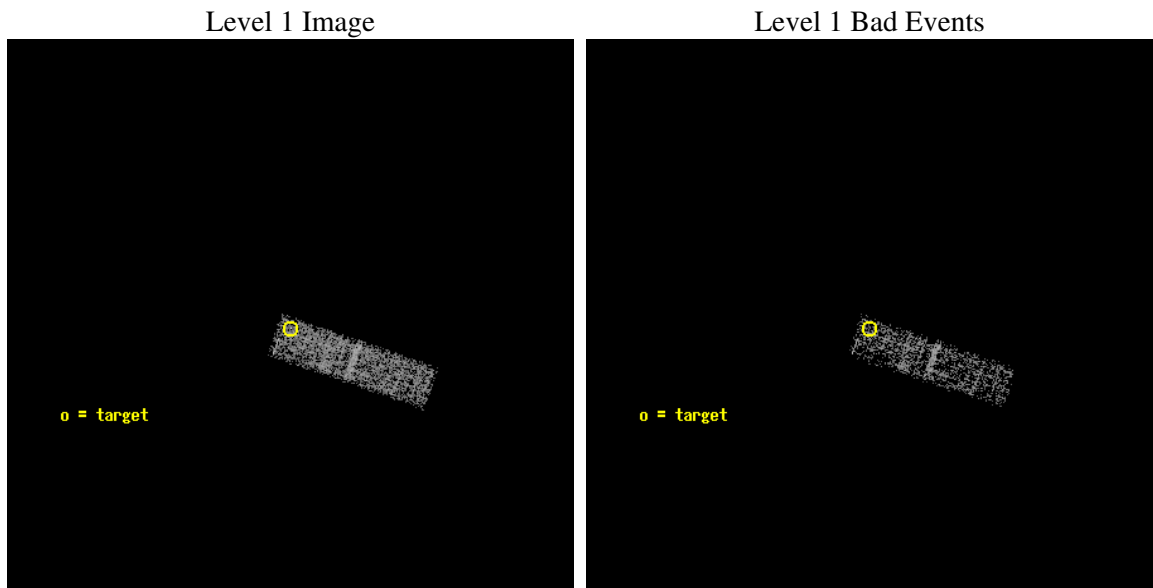
seq_num	700346
obs_id	2156
title	RED QUASARS AND THE X-RAY BACKGROUND
observer	Dr. BELINDA WILKES
object	2MASSJ022150+1327
dtcycle	0
cycle	P
ra_targ	35.460833
dec_targ	13.461389
ra_nom	35.46116459671
dec_nom	13.466248777454
roll_nom	109.03304624427
revision	2
ontime	3661.5999863595
livetime	3482.9258882902
ontime3	3661.5999863595
l2events	720



2 OBI

2.1 OBI

2.1.1 Images



2.1.2 Bias

Chip 3



2.1.3 Parameters

obi_num	0
ascdsver	7.6.9
caldbver	3.2.4
date	2006-12-16T02:15:54
revision	2

sched_exp_time	3300.000000
ontime	4135.340132758
ontime3	4135.340132758
l1events	9557

2.1.4 Events

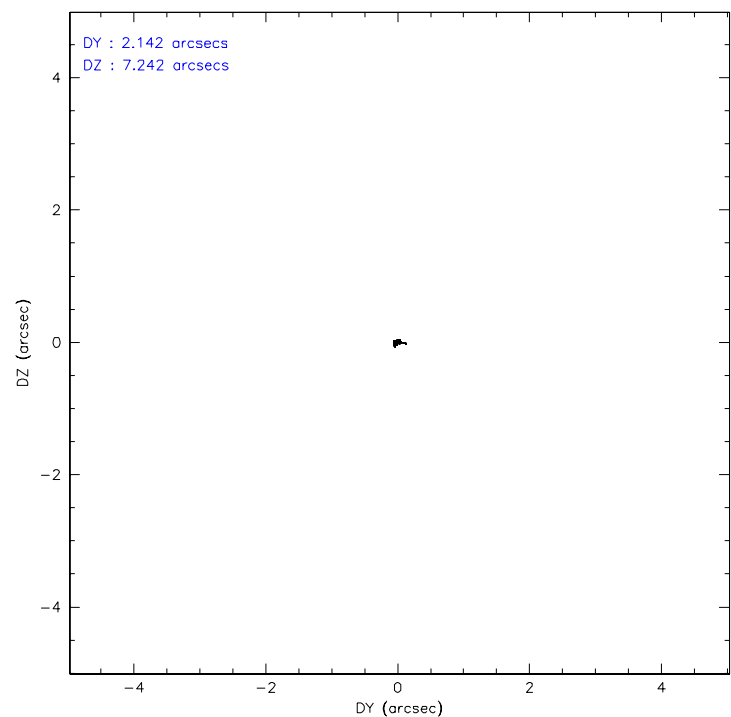
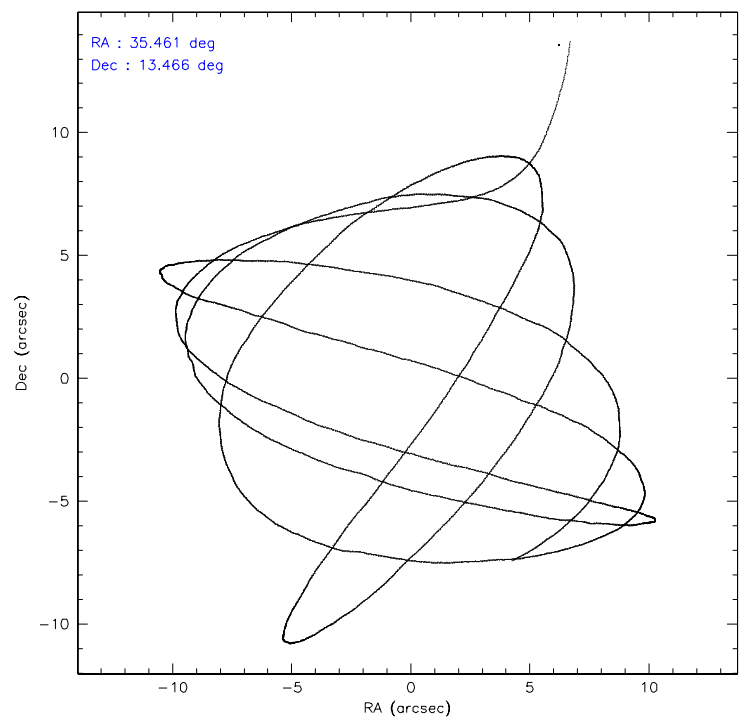
	ccd 3
level 1 events	9557
rejected events	8683
rejected %	90%

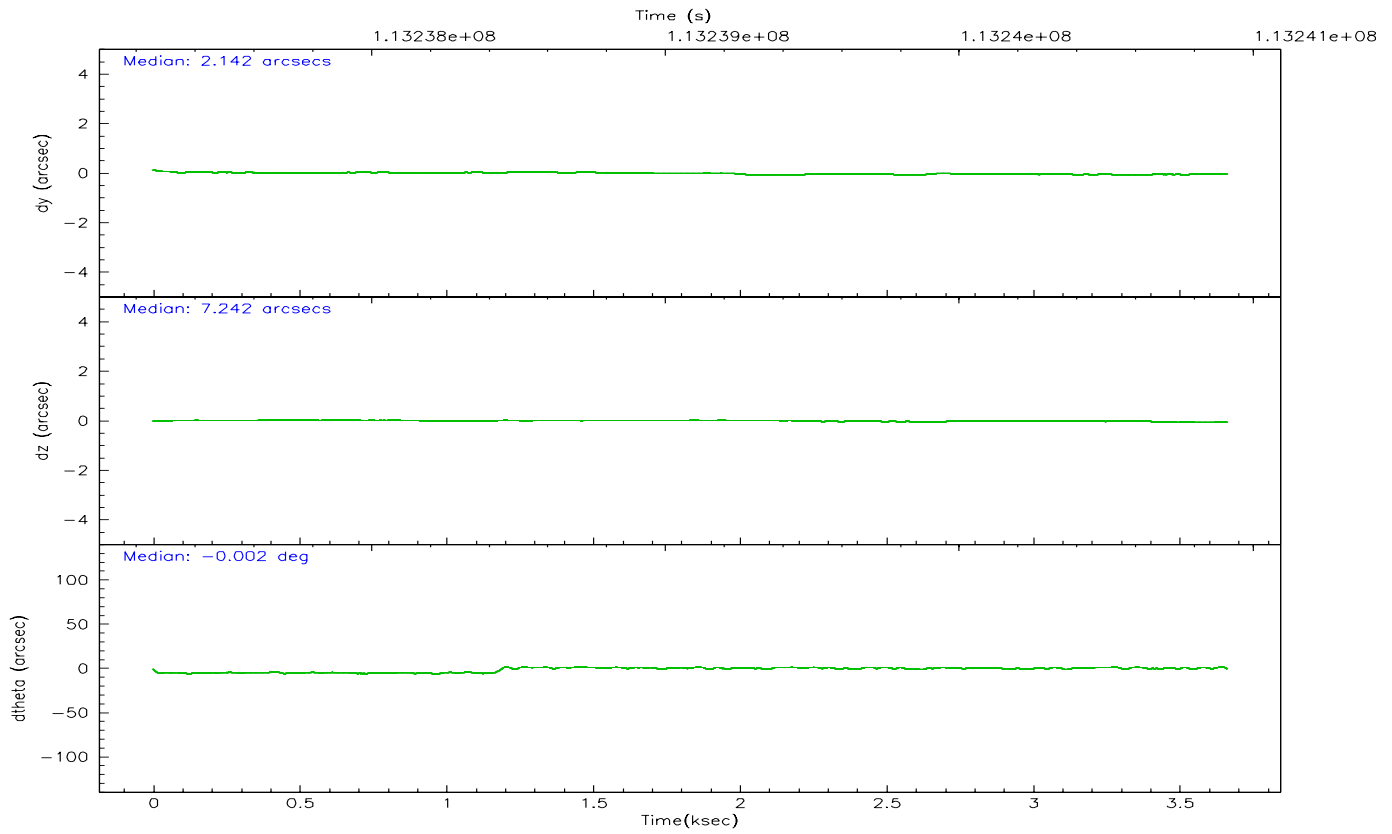
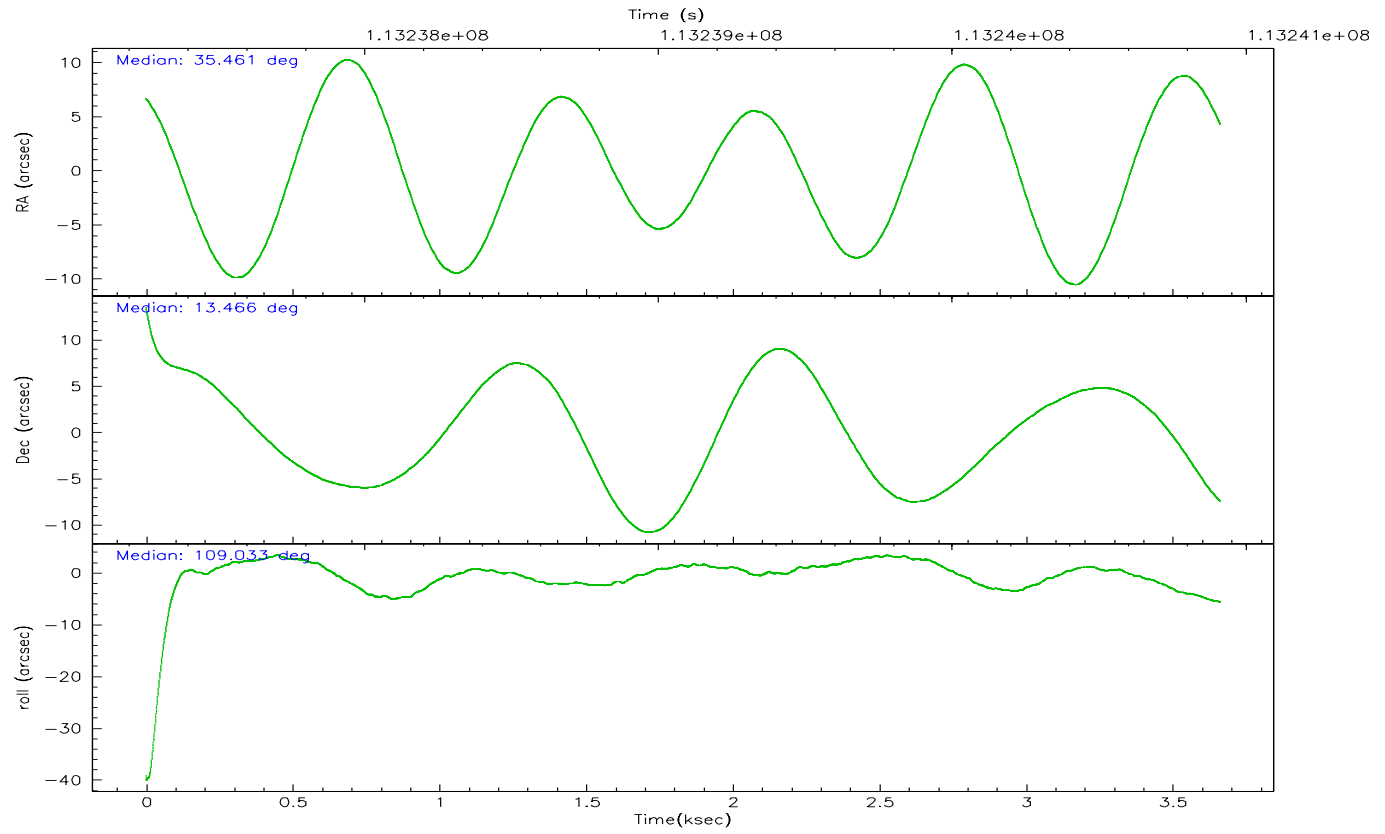
	ccd 3
grade 0 events	390
	4%
grade 1 events	4
	0%
grade 2 events	147
	1%
grade 3 events	147
	1%
grade 4 events	129
	1%
grade 5 events	256
	2%
grade 6 events	178
	1%
grade 7 events	8306
	86%

2.2 Compared Parameters

Parameter	Planned	Actual	Parameter	Planned	Actual
Instrument	ACIS	ACIS	Obspar format version number	6	6
Detector	ACIS-3	ACIS-3	Obspar file type	PREDICTED	ACTUAL
Grating	NONE	NONE	Obspar update status	NONE	UPDATED
Data mode	VFAINT	VFAINT	Number of optional ACIS chips dropped	0	0
Observation mode	POINTING	POINTING	On-chip summing requested	N	N
Pointing RA	35.482499	35.46116459671045	Subarray requested	1/4	1/4
Pointing Dec	13.448141	13.46624877745424	Subarray start row	0	769
Pointing Roll	108.819504	109.0330462442708	Subarray row count	1024	256
SIM focus pos (mm)	-0.782348	-0.7809083437167272	Alternating exposures requested	N	N
SIM defocus (mm)	0	0.001439871863259334	Primary exposure time	0.000000	0.8
SIM translation stage pos (mm)	-233.592463	-233.5874344608287			
SIM translation stage offset (mm)	0	-0.005018542100998502			
Observation start time	113237616.184000	113236544.33293			
Observation start date	2001-08-03T14:52:32	2001-08-03T14:35:44			
Observation end time	113240916.184000	113241537.62063			
Observation end date	2001-08-03T15:47:32	2001-08-03T15:58:57			
Read mode	TIMED	TIMED			

2.3 Aspect



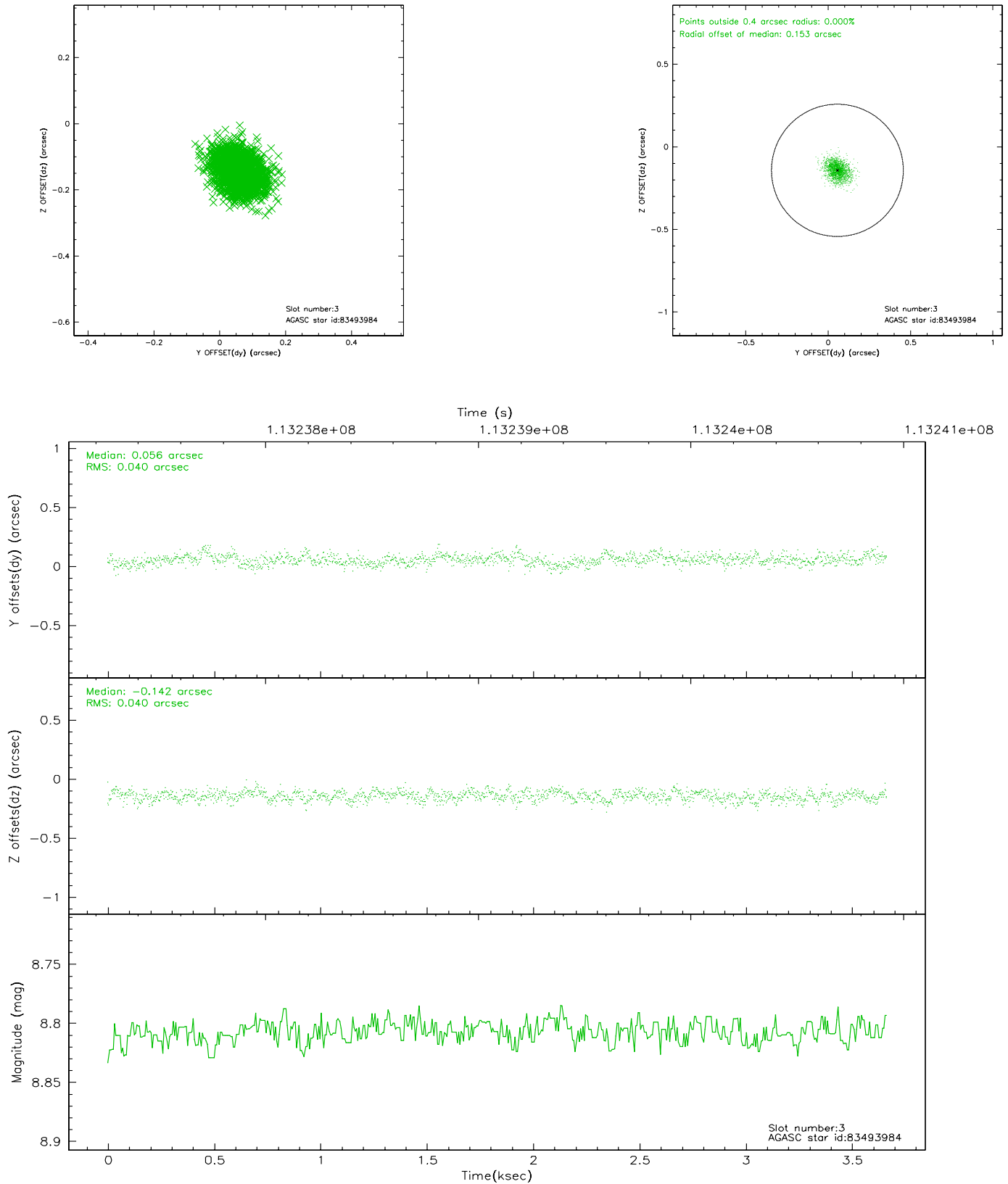


Slot Statistics

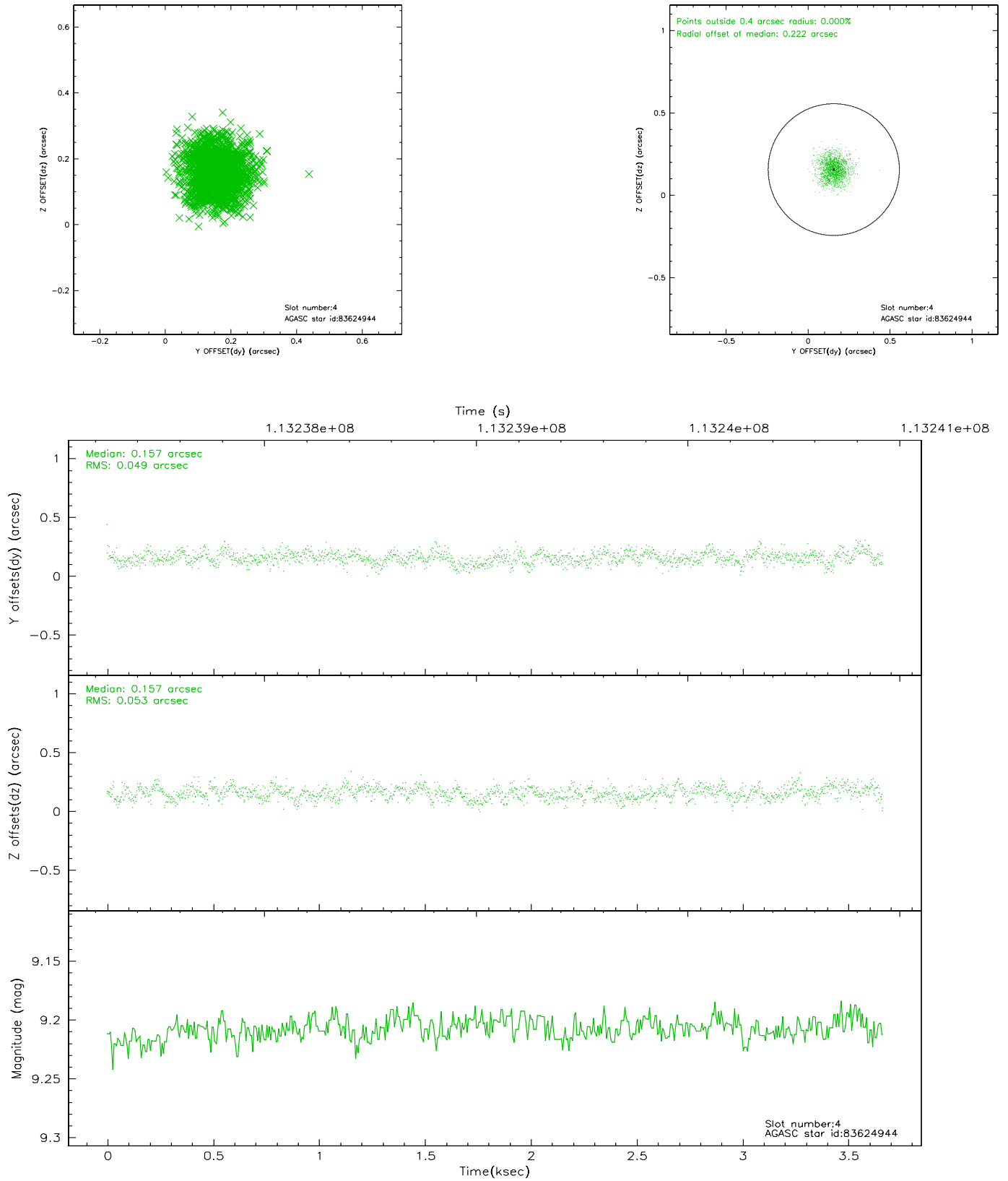
slot	status	id	mag	n_pts	med_dy	med_dz	dr1	dr2	ra	dec	mean_y	mean_z
0	FID	ACIS-I-2	7.15	894	-0.025	-0.037	0.017	0.027	0.000000	0.000000	-756.52	-837.04
1	FID	ACIS-I-4	7.20	894	-0.028	0.033	0.011	0.018	0.000000	0.000000	2156.77	1068.33
2	FID	ACIS-I-5	7.23	894	-0.050	0.071	0.023	0.037	0.000000	0.000000	-1808.14	1068.19
3	GUIDE	83493984	8.81	1787	0.056	-0.142	0.059	0.099	35.548684	13.181335	-984.40	90.54
4	GUIDE	83624944	9.21	1786	0.157	0.157	0.077	0.125	36.137433	13.017339	-2207.17	-1674.57
5	GUIDE	83495720	9.57	1788	-0.082	0.059	0.081	0.131	35.370468	13.935538	1785.41	-195.92
6	GUIDE	83495760	9.77	1785	-0.142	-0.149	0.087	0.142	35.323302	13.803368	1390.55	114.45
7	GUIDE	83494176	9.97	1786	0.015	0.075	0.111	0.191	35.546845	13.638236	575.49	-433.23

2.4 Star Slots

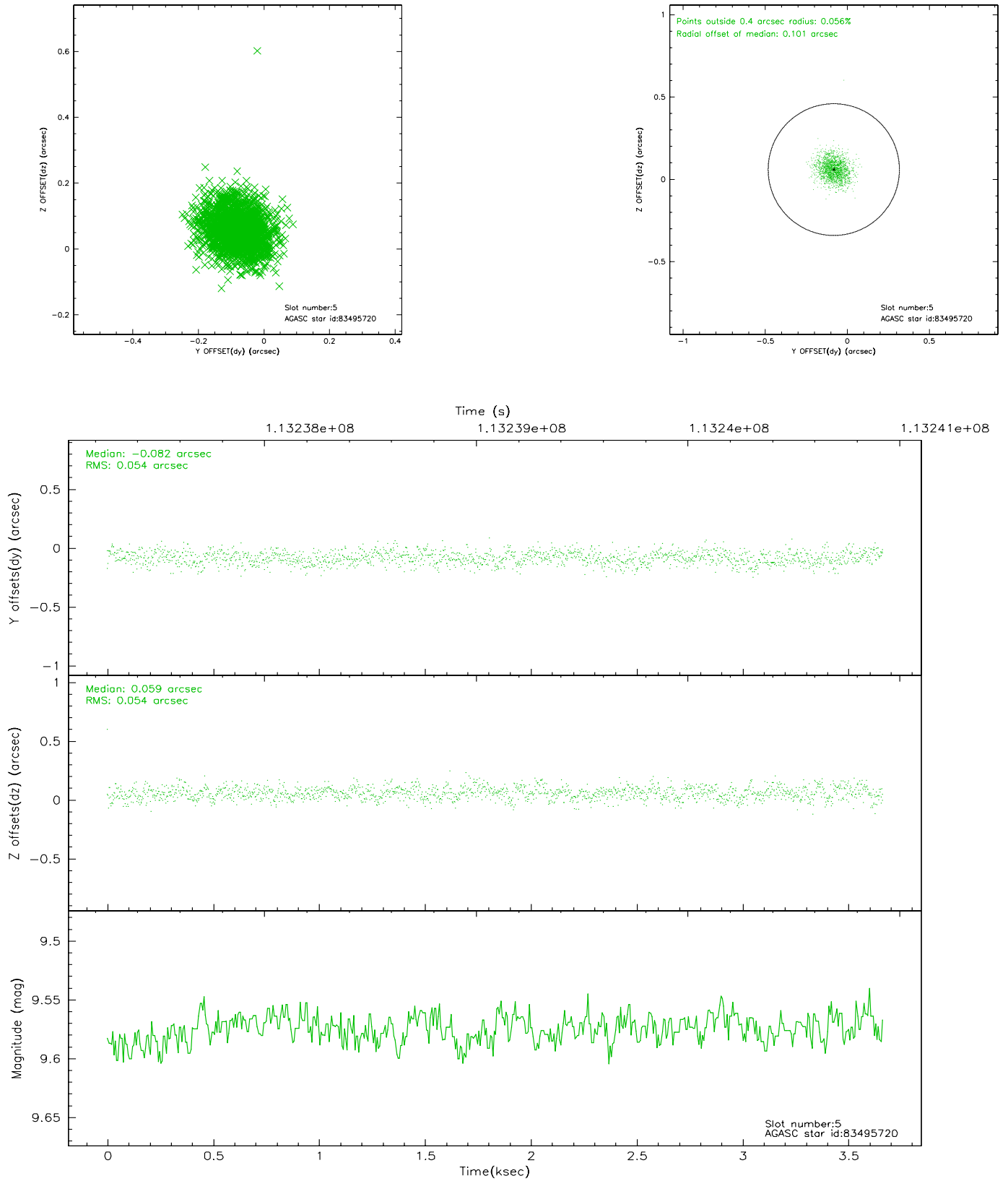
2.4.1 Slot 3



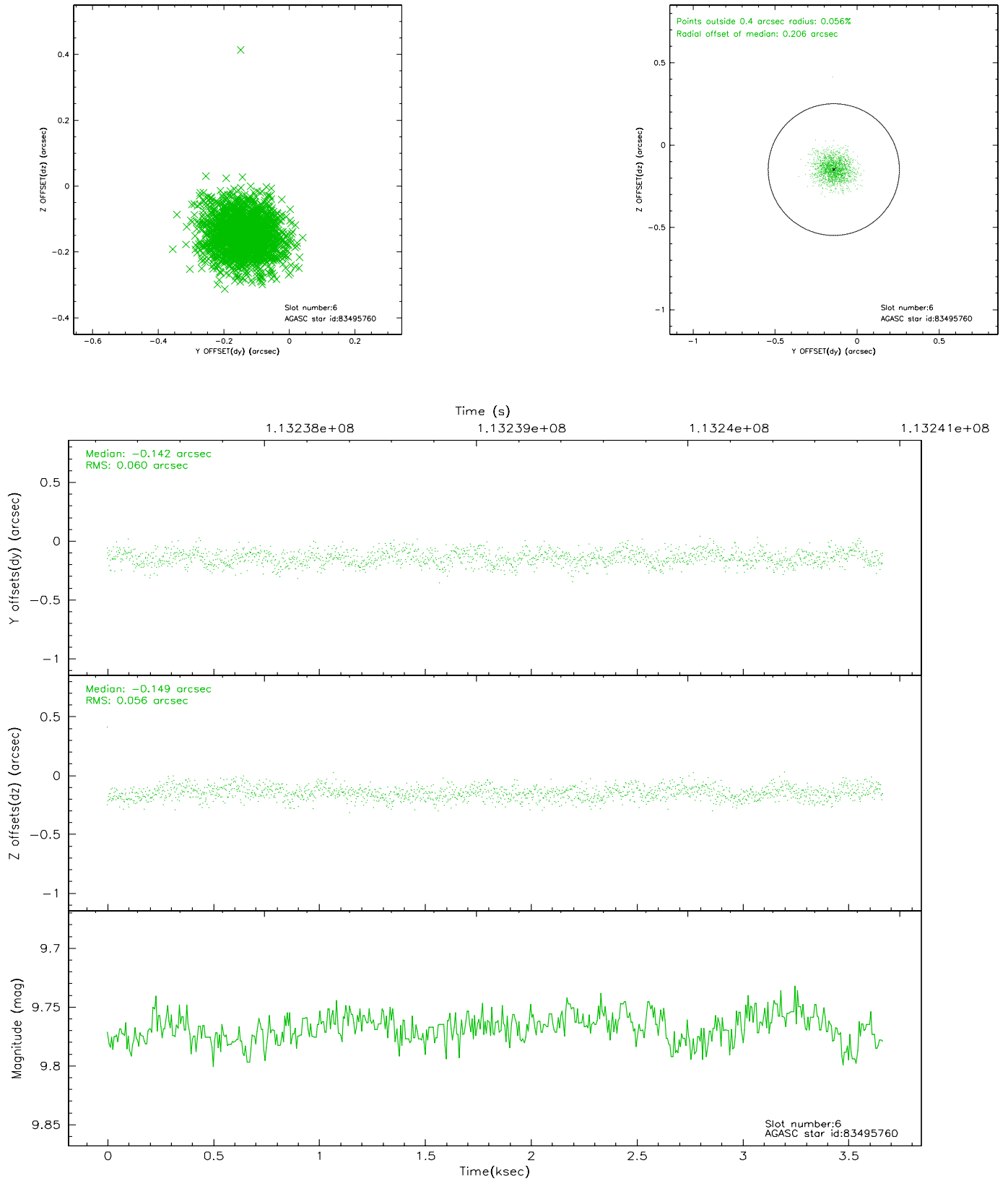
2.4.2 Slot 4



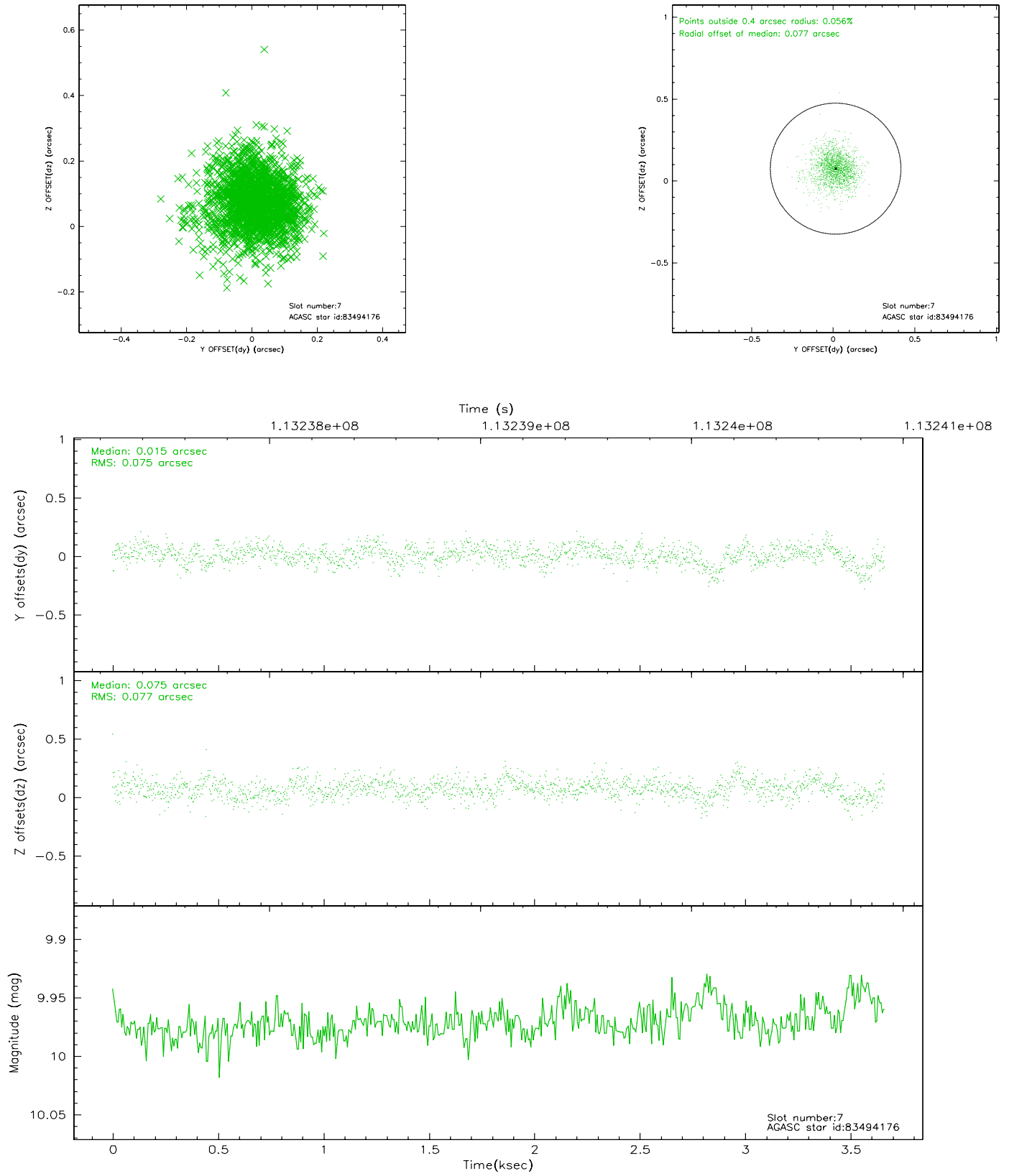
2.4.3 Slot 5



2.4.4 Slot 6

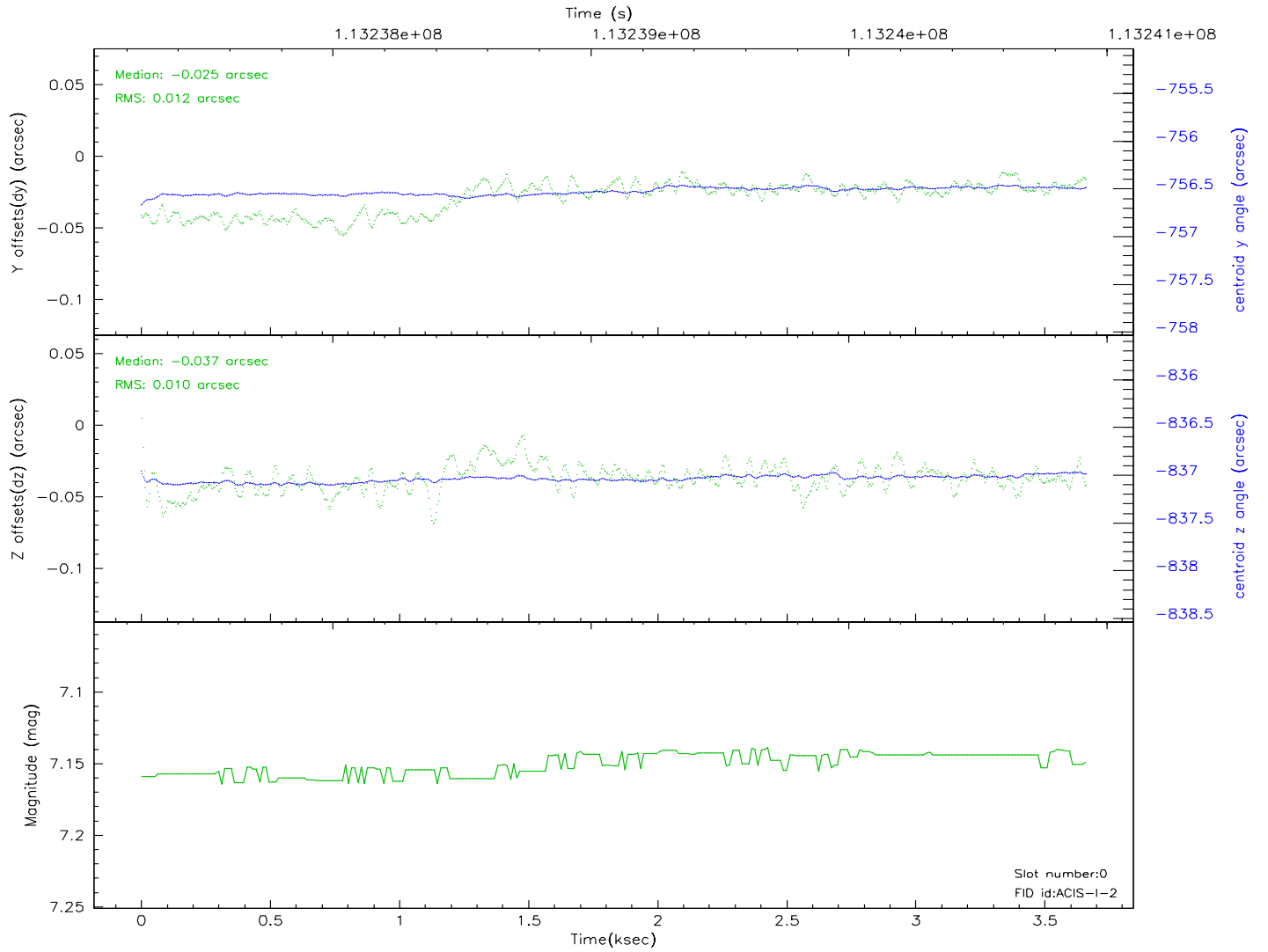
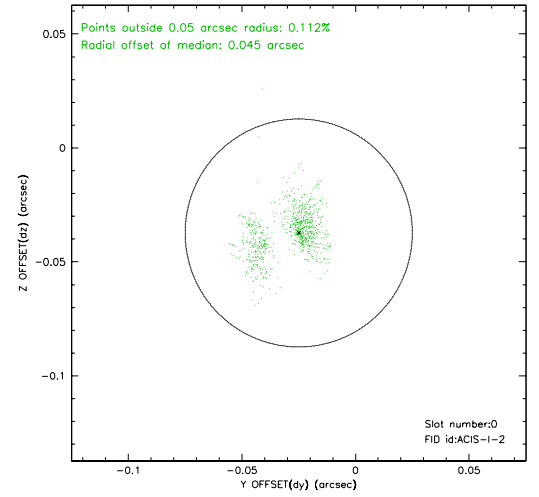
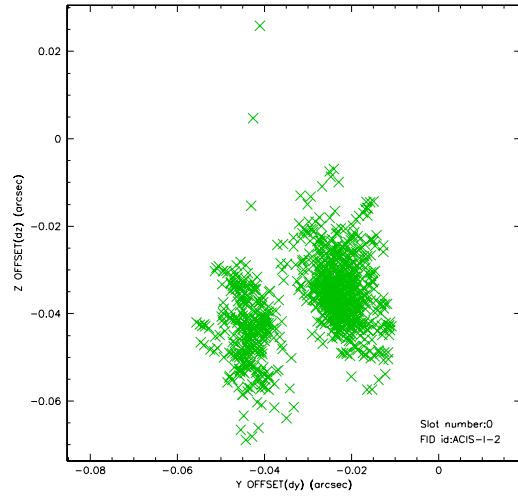


2.4.5 Slot 7

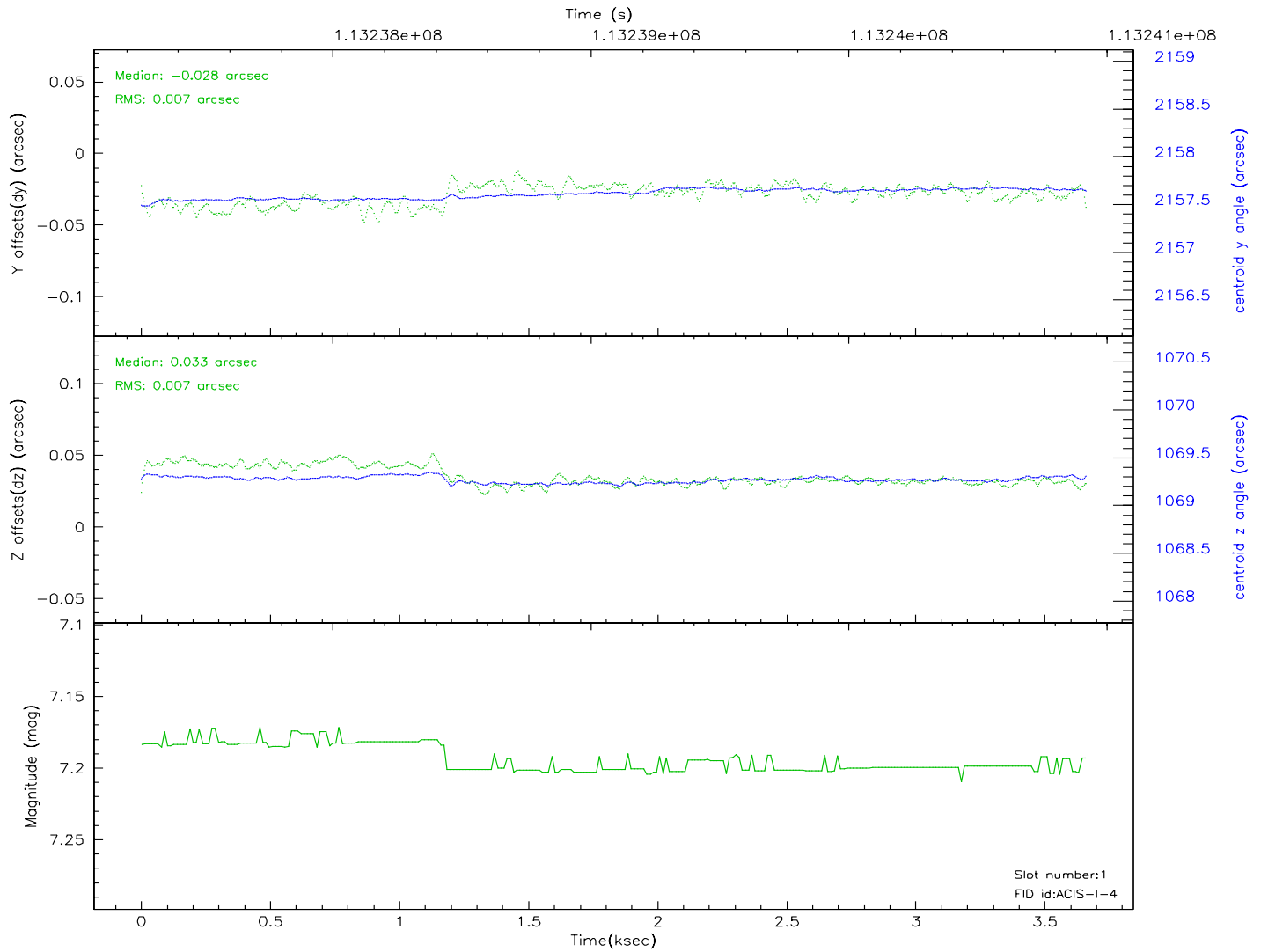
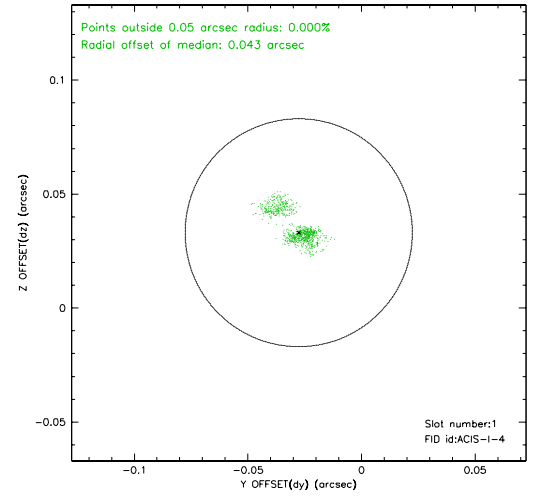
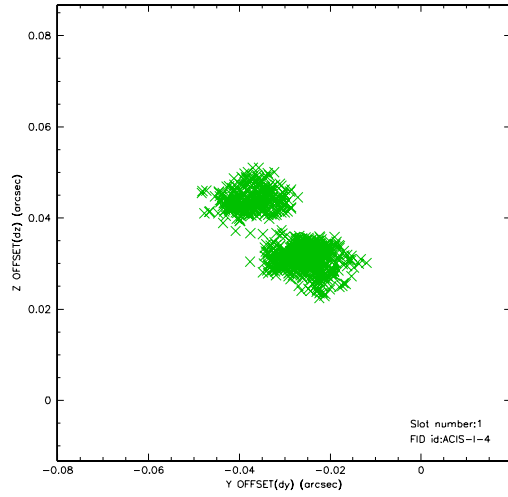


2.5 FID Slots

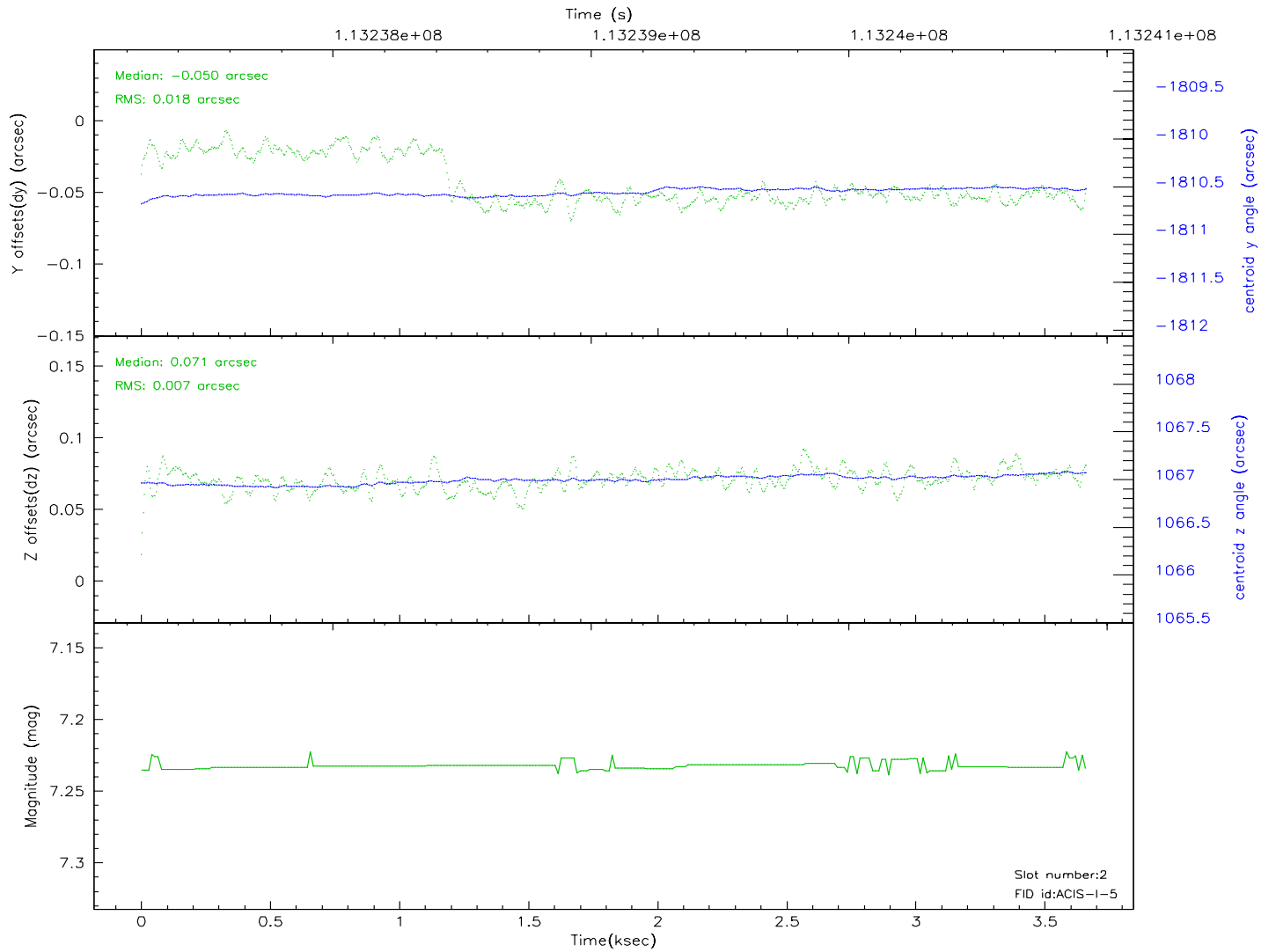
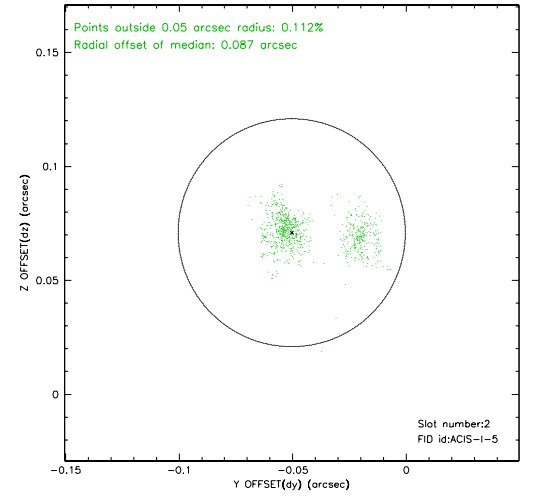
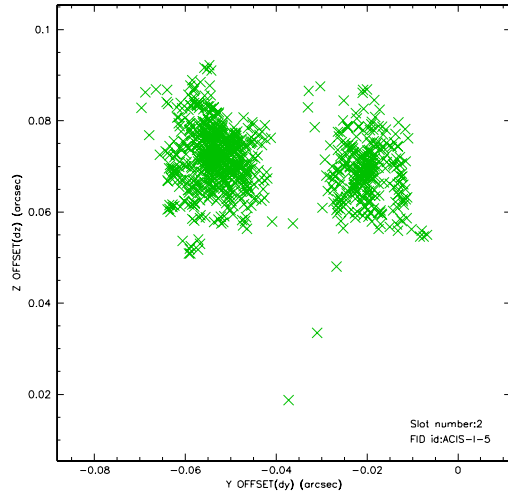
2.5.1 Slot 0



2.5.2 Slot 1



2.5.3 Slot 2



3 Point Sources

A Summary

A.1 Status

V&V Scientist	Beth Sundheim
V&V Date (YYYY-MM-DD)	2006.12.17
V&V Edition	1
V&V Disposition and Status	OK
V&V Charge Time	3.662

A.2 Comments