

V&V Reference Report

L2 ASCDS Version : 7.6.9

Observation 2149 - L2 Version 001
Chandra X-Ray Center

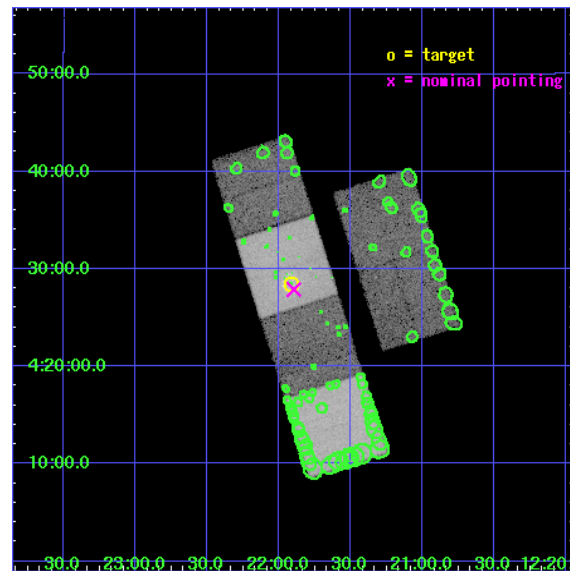
L2 Processing Date : Dec 19 2006

Contents

1	Front	2
2	OBI	3
2.1	OBI	3
2.1.1	Images	3
2.1.2	Bias	3
2.1.3	Parameters	4
2.1.4	Events	4
2.2	Compared Parameters	5
2.3	Aspect	6
2.4	Star Slots	9
2.4.1	Slot 3	9
2.4.2	Slot 4	10
2.4.3	Slot 5	11
2.4.4	Slot 6	12
2.4.5	Slot 7	13
2.5	FID Slots	14
2.5.1	Slot 0	14
2.5.2	Slot 1	15
2.5.3	Slot 2	16
3	Point Sources	17
A	Summary	18
A.1	Status	18
A.2	Comments	18

1 Front

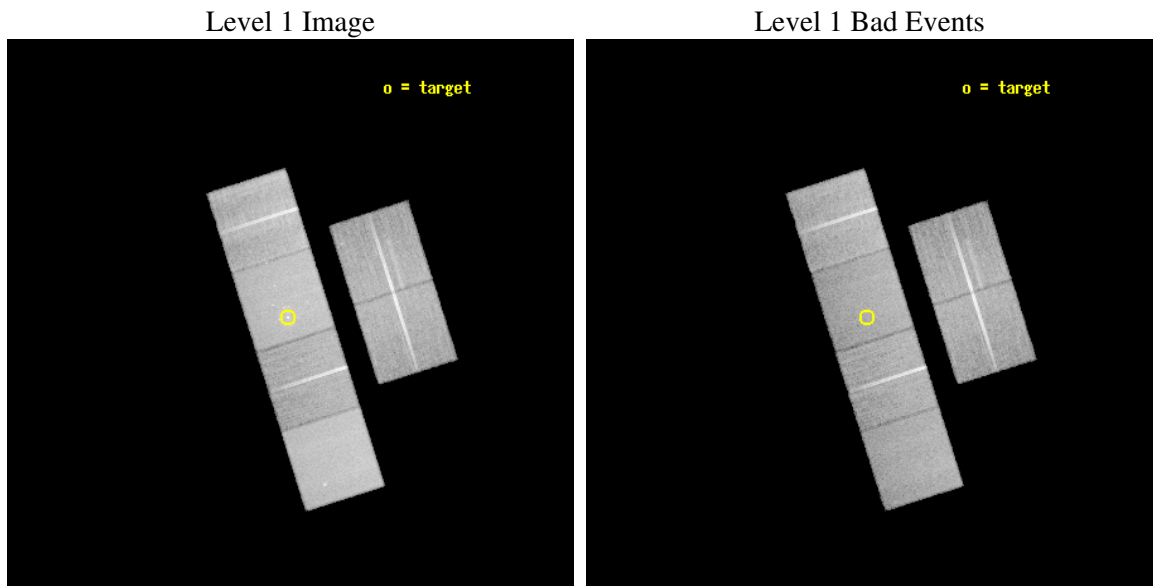
seq_num	700339
obs_id	2149
title	STARBURST-AGN CONNECTION: CIRCUMNUCLEAR STAR FORMATION IN SEYFERT 2
observer	Dr. Maria Santos-Lleo
object	NGC 4303
dtcycle	0
cycle	P
ra_targ	185.479167
dec_targ	4.473583
ra_nom	185.47458119395
dec_nom	4.464951568358
roll_nom	252.39495317892
revision	2
ontime	28377.600026429
livetime	28018.265767955
ontime2	28377.600026429
ontime3	28377.600026429
ontime5	28377.600026429
ontime6	28377.600026429
ontime7	28377.600026429
ontime8	28374.359195784
l2events	315106



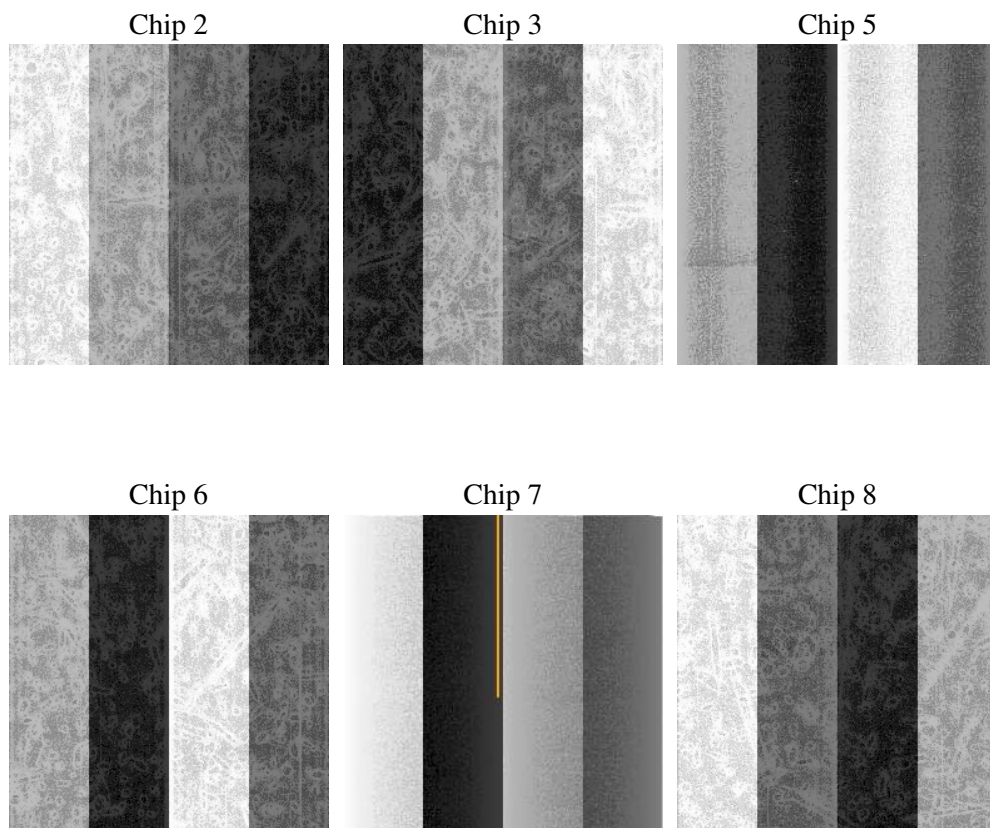
2 OBI

2.1 OBI

2.1.1 Images



2.1.2 Bias



2.1.3 Parameters

obi_num	0
ascdsver	7.6.9
caldsver	3.2.4
date	2006-12-19T11:14:38
revision	2

sched_exp_time	28627.000000
ontime	28384.64902781
ontime2	28384.64902781
ontime3	28387.890037894
ontime5	28384.64902781
ontime6	28387.890037894
ontime7	28384.64902781
ontime8	28384.649107561
l1events	1334463

2.1.4 Events

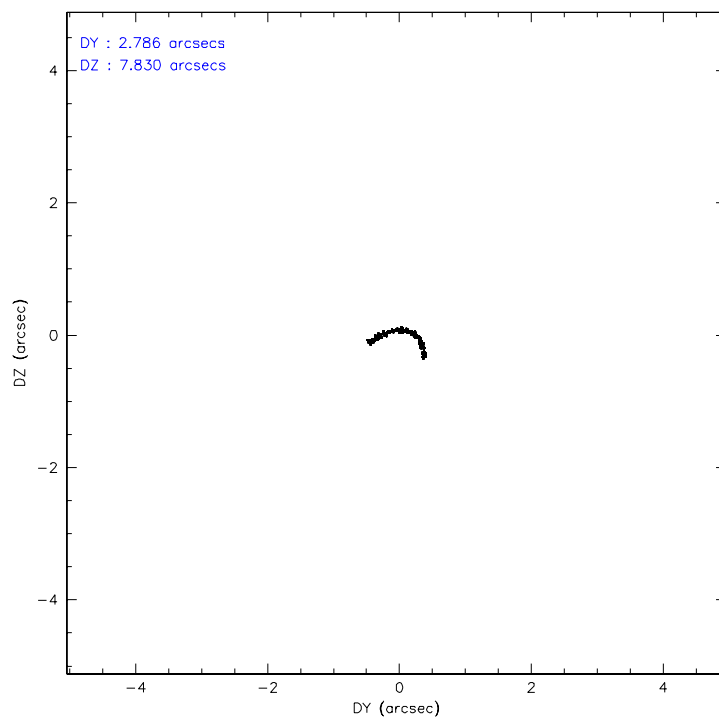
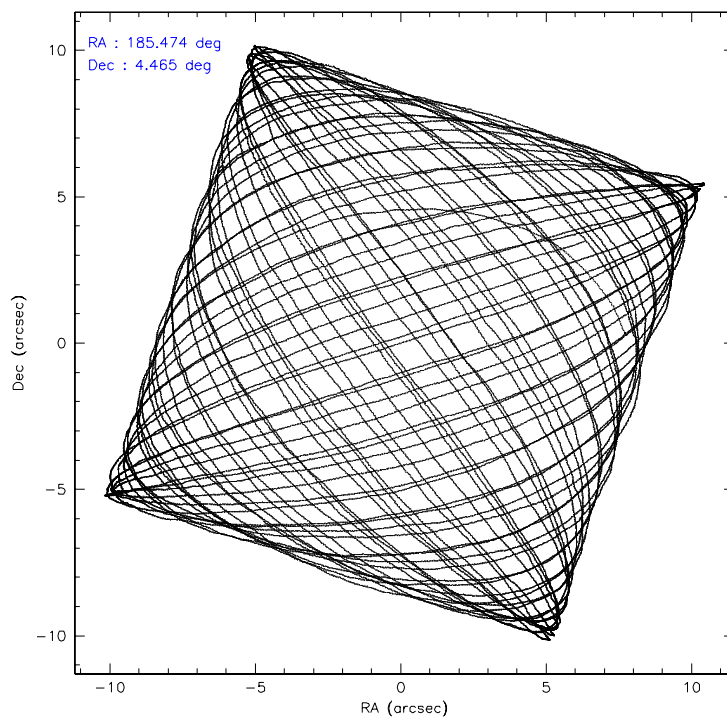
	ccd 2	ccd 3	ccd 5	ccd 6	ccd 7	ccd 8
level 1 events	188880	183688	274710	187595	262343	237247
rejected events	167334	162114	148018	164578	147688	190424
rejected %	88%	88%	53%	87%	56%	80%

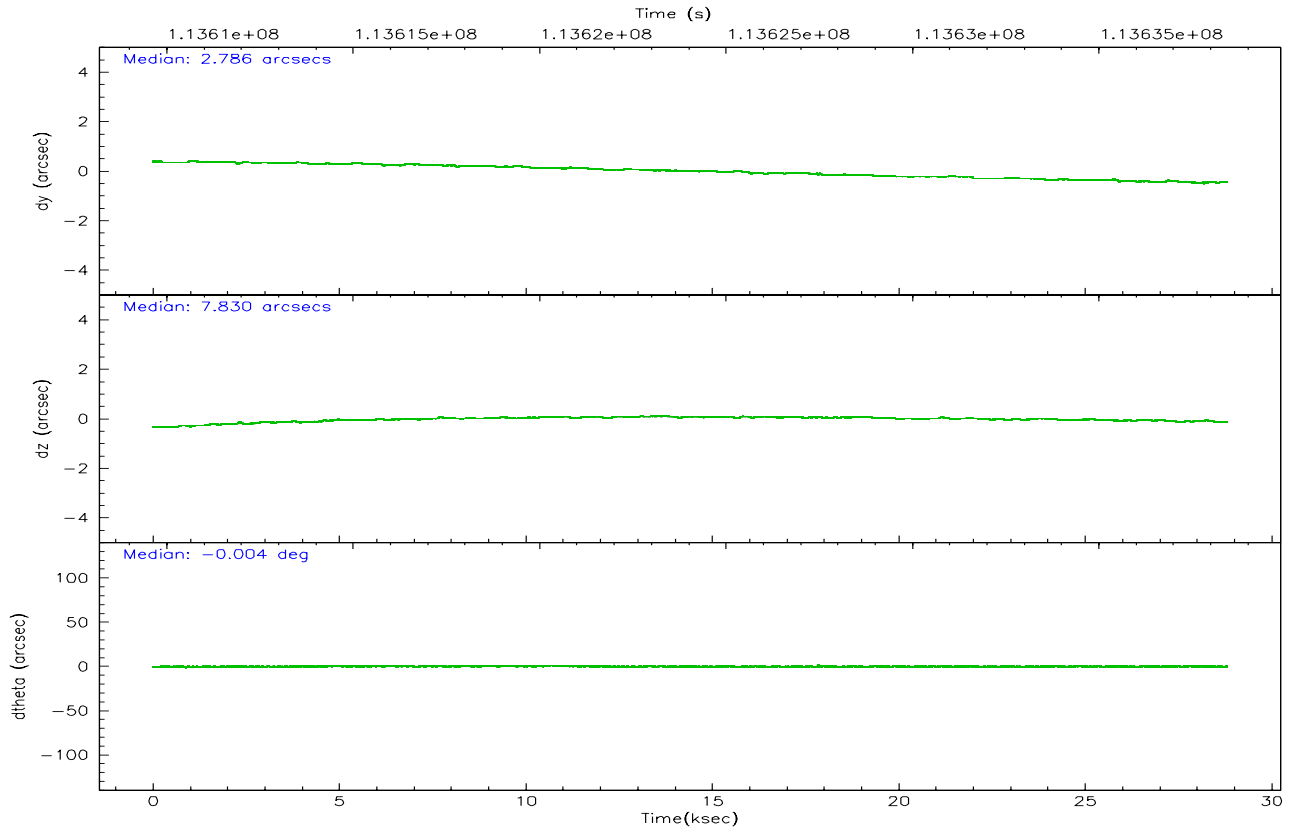
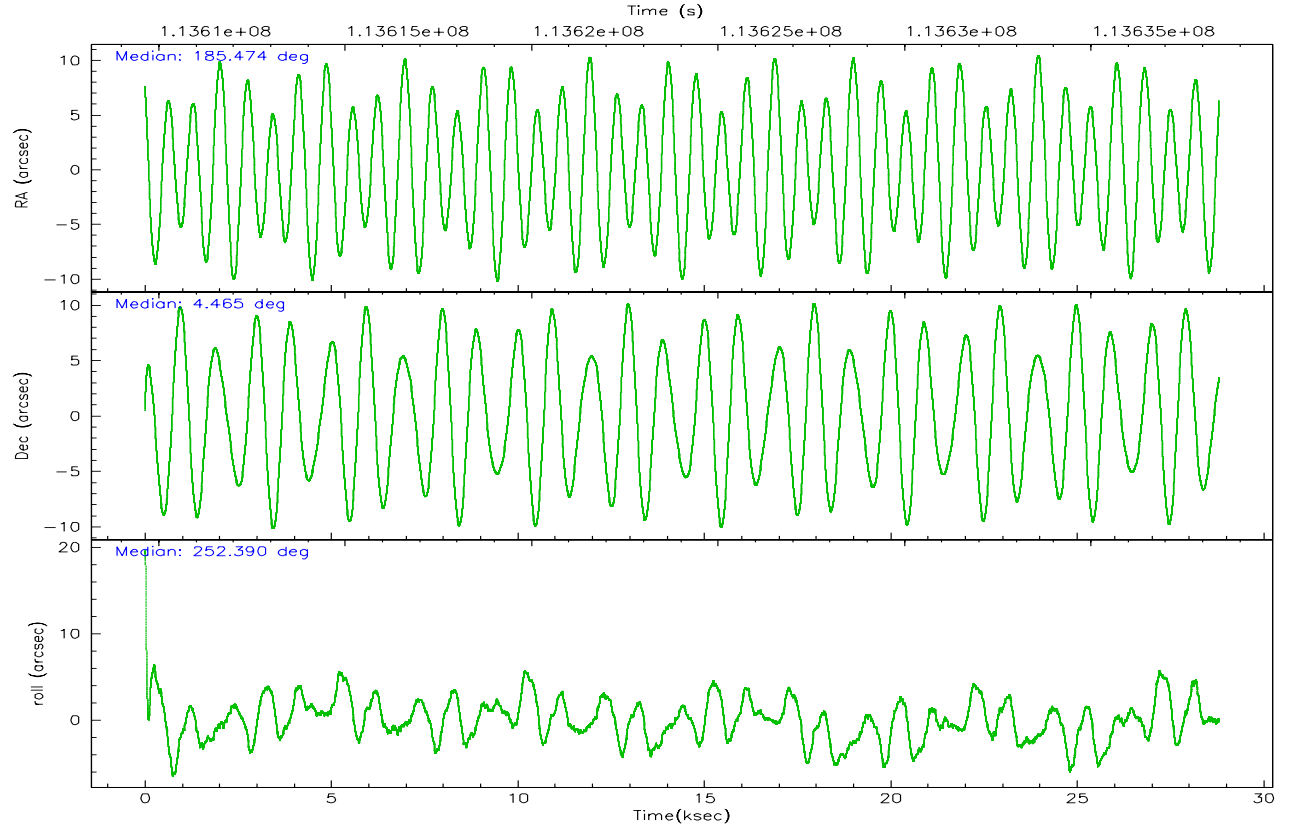
	ccd 2	ccd 3	ccd 5	ccd 6	ccd 7	ccd 8
grade 0 events	9286	9593	8200	10142	10584	15478
	4%	5%	2%	5%	4%	6%
grade 1 events	86	78	222	94	147	144
	0%	0%	0%	0%	0%	0%
grade 2 events	4654	4198	39676	4420	27424	9969
	2%	2%	14%	2%	10%	4%
grade 3 events	2017	2034	3473	2174	6716	5013
	1%	1%	1%	1%	2%	2%
grade 4 events	2013	1956	3318	2137	6532	4648
	1%	1%	1%	1%	2%	1%
grade 5 events	6420	7172	13274	7846	16330	9892
	3%	3%	4%	4%	6%	4%
grade 6 events	3582	3801	72051	4151	63420	11721
	1%	2%	26%	2%	24%	4%
grade 7 events	160822	154856	134496	156631	131190	180382
	85%	84%	48%	83%	50%	76%

2.2 Compared Parameters

Parameter	Planned	Actual	Parameter	Planned	Actual
Instrument	ACIS	ACIS	Obspar format version number	6	6
Detector	ACIS-235678	ACIS-235678	Obspar file type	PREDICTED	ACTUAL
Grating	NONE	NONE	Obspar update status	NONE	UPDATED
Data mode	FAINT	FAINT	Number of optional ACIS chips dropped	0	0
Observation mode	POINTING	POINTING	On-chip summing requested	N	N
Pointing RA	185.468433	185.4745811939501	Subarray requested	NONE	NONE
Pointing Dec	4.491540	4.464951568357984	Alternating exposures requested	N	N
Pointing Roll	252.238801	252.3949531789163	Primary exposure time	0.000000	3.2
SIM focus pos (mm)	-0.684267	-0.6828225247311905			
SIM defocus (mm)	0	0.001444936568705701			
SIM translation stage pos (mm)	-190.132523	-190.1400660498719			
SIM translation stage offset (mm)	0	0.00754346686406393			
Observation start time	113609811.184000	113609213.3351			
Observation start date	2001-08-07T22:15:47	2001-08-07T22:06:53			
Observation end time	113638438.184000	113639830.59881			
Observation end date	2001-08-08T06:12:54	2001-08-08T06:37:10			
Read mode	TIMED	TIMED			

2.3 Aspect



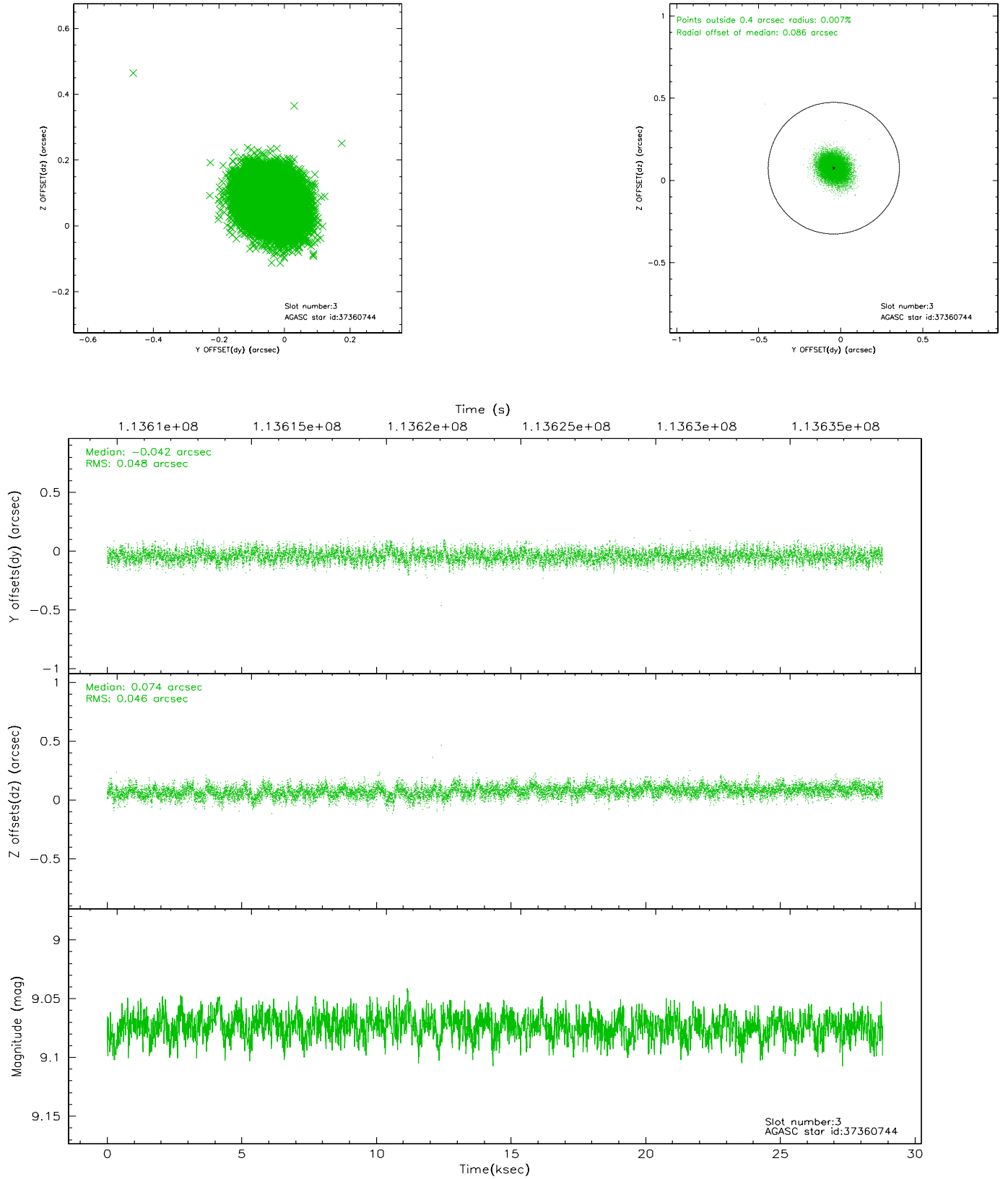


Slot Statistics

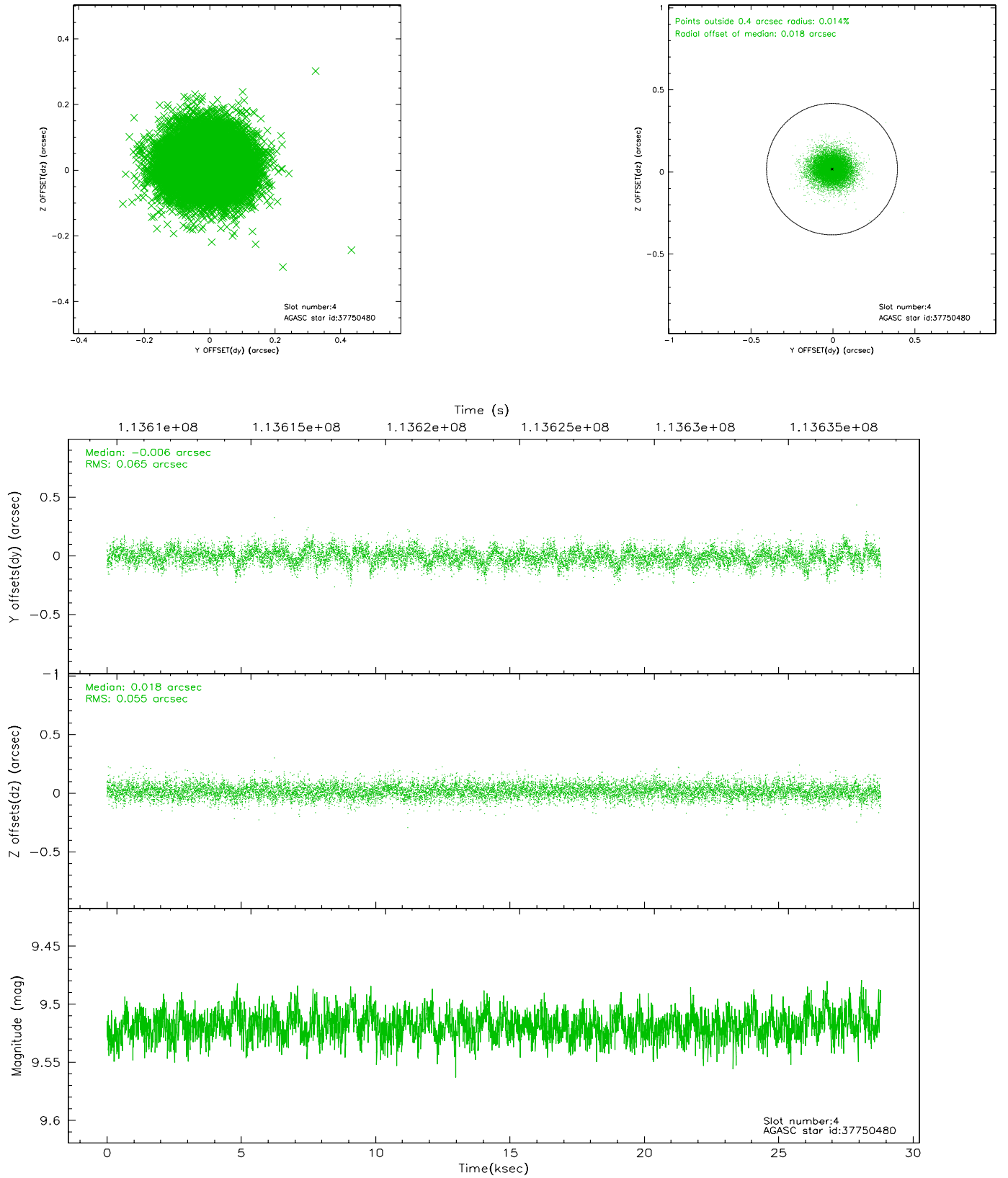
slot	status	id	mag	n_pts	med_dy	med_dz	dr1	dr2	ra	dec	mean_y	mean_z
0	FID	ACIS-S-2	7.11	7026	0.012	0.019	0.012	0.018	0.000000	0.000000	-755.41	-1728.97
1	FID	ACIS-S-4	7.19	7024	-0.097	-0.010	0.011	0.018	0.000000	0.000000	2157.73	179.38
2	FID	ACIS-S-5	7.24	7025	0.052	0.000	0.009	0.014	0.000000	0.000000	-1808.10	173.18
3	GUIDE	37360744	9.07	14048	-0.042	0.074	0.070	0.115	185.839549	4.671352	-1023.54	1071.70
4	GUIDE	37750480	9.52	14041	-0.006	0.018	0.090	0.149	185.717050	5.052431	-2195.59	234.09
5	GUIDE	37360448	7.99	14051	-0.019	-0.027	0.061	0.099	185.250831	4.537778	79.11	-793.31
6	GUIDE	37357584	9.78	14050	0.009	-0.018	0.088	0.145	185.252875	4.751455	-655.62	-1020.95
7	GUIDE	37231560	9.57	13978	0.057	-0.044	0.098	0.160	184.996101	4.456949	635.15	-1575.70

2.4 Star Slots

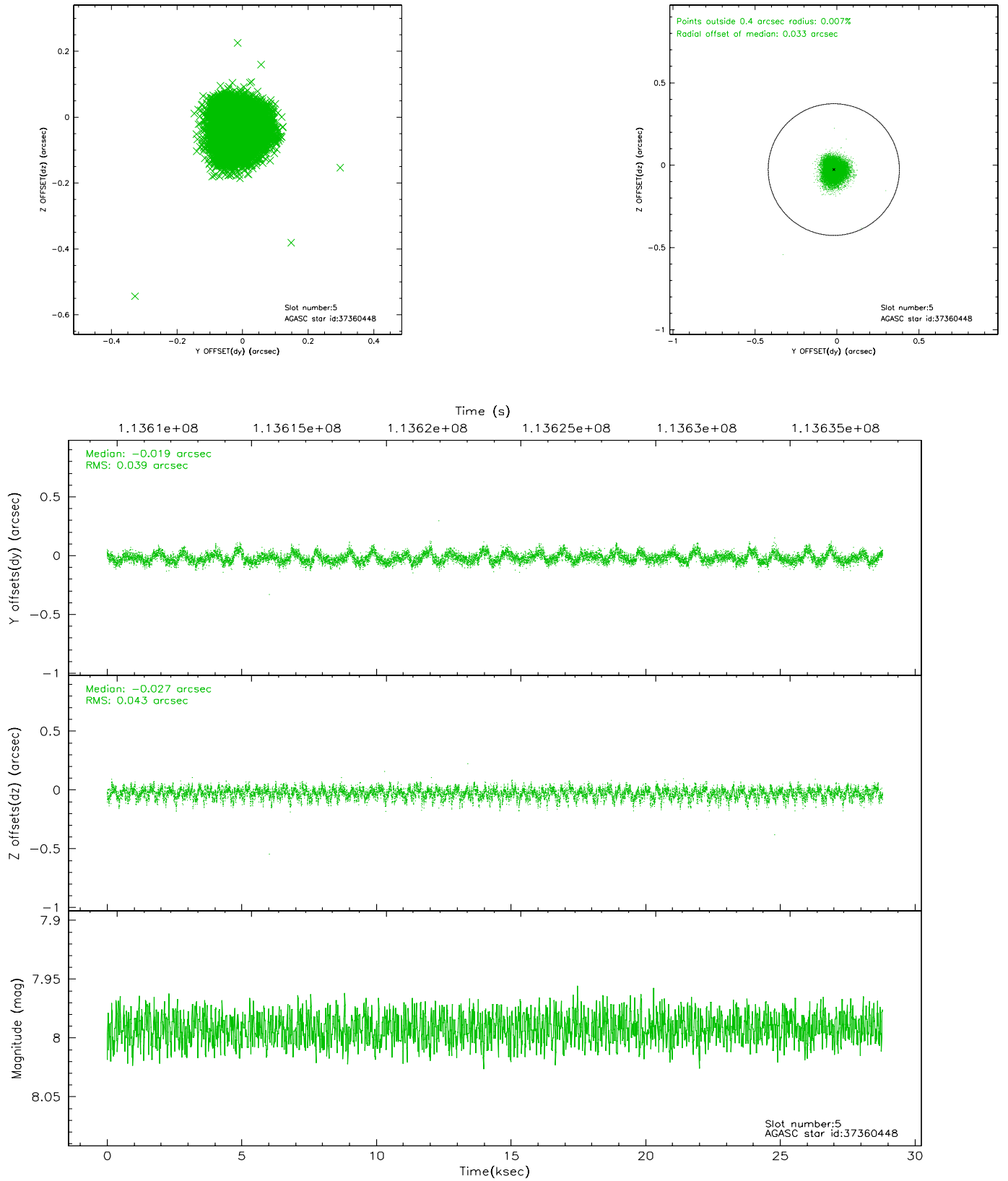
2.4.1 Slot 3



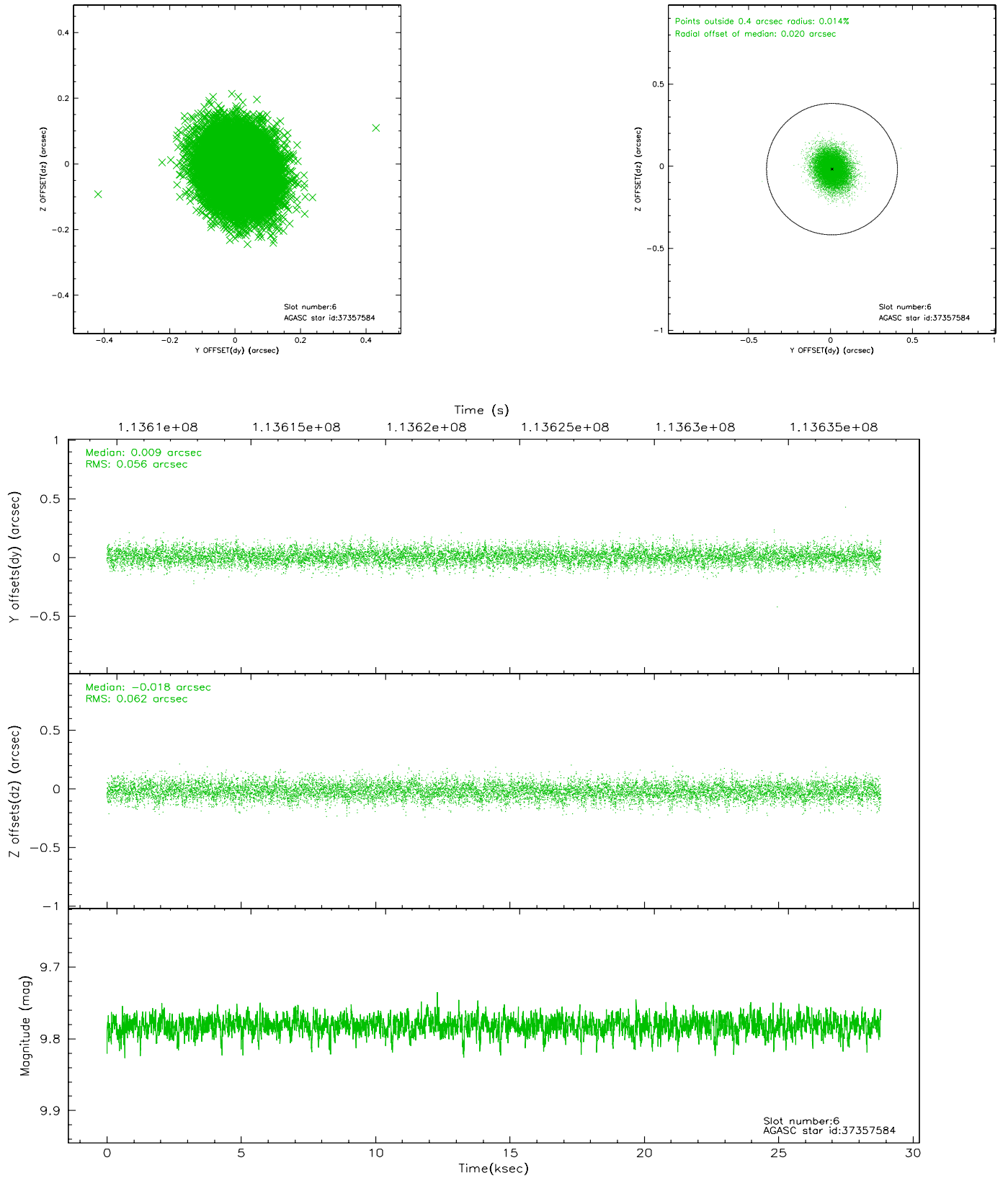
2.4.2 Slot 4



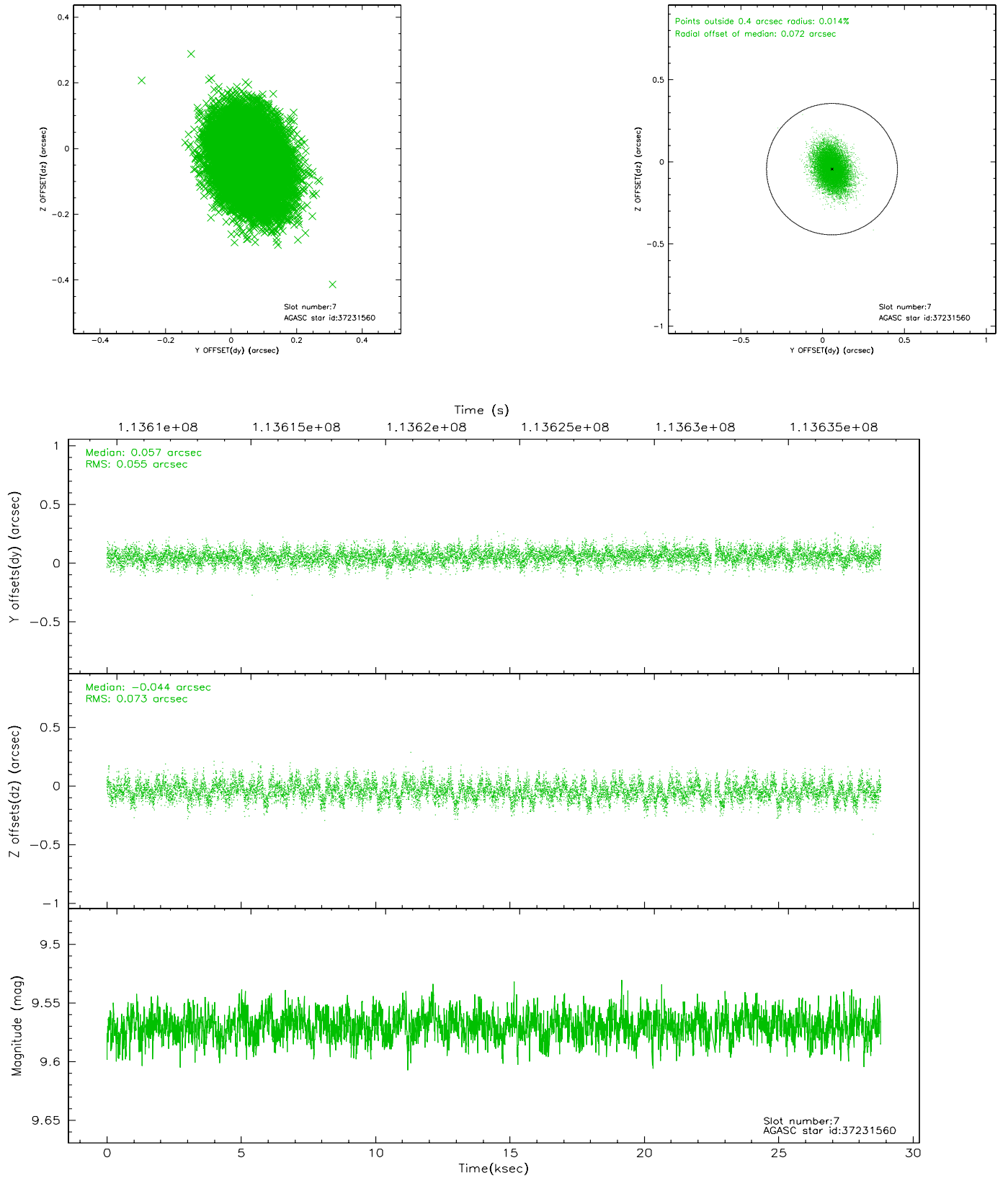
2.4.3 Slot 5



2.4.4 Slot 6

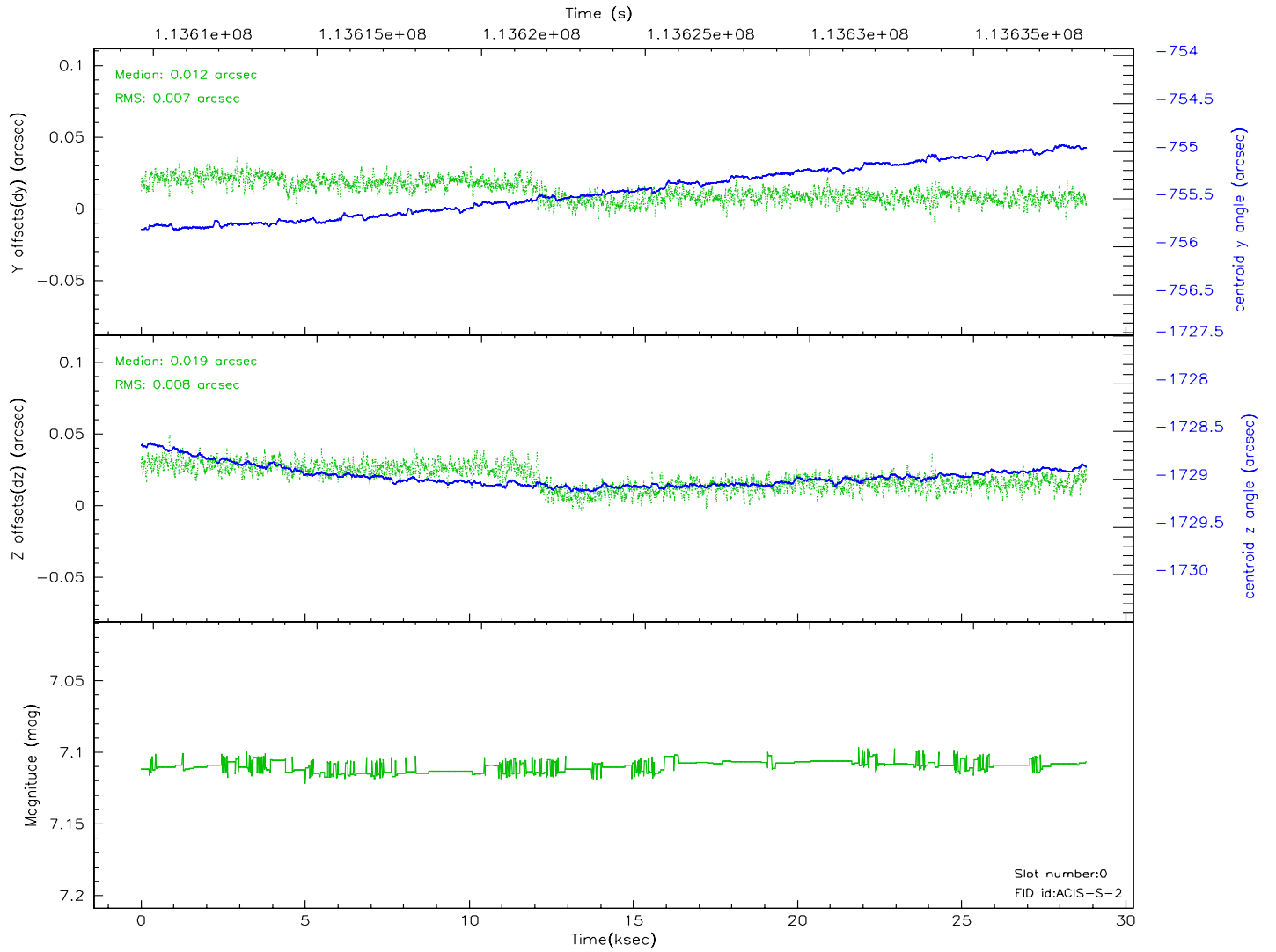
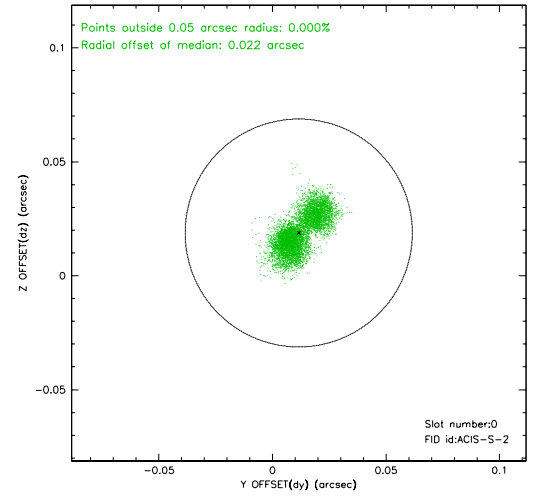
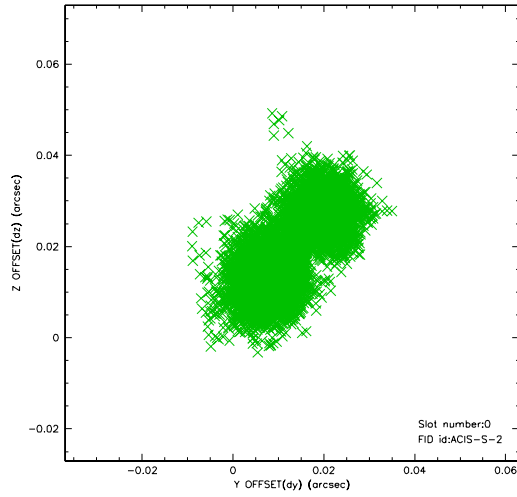


2.4.5 Slot 7

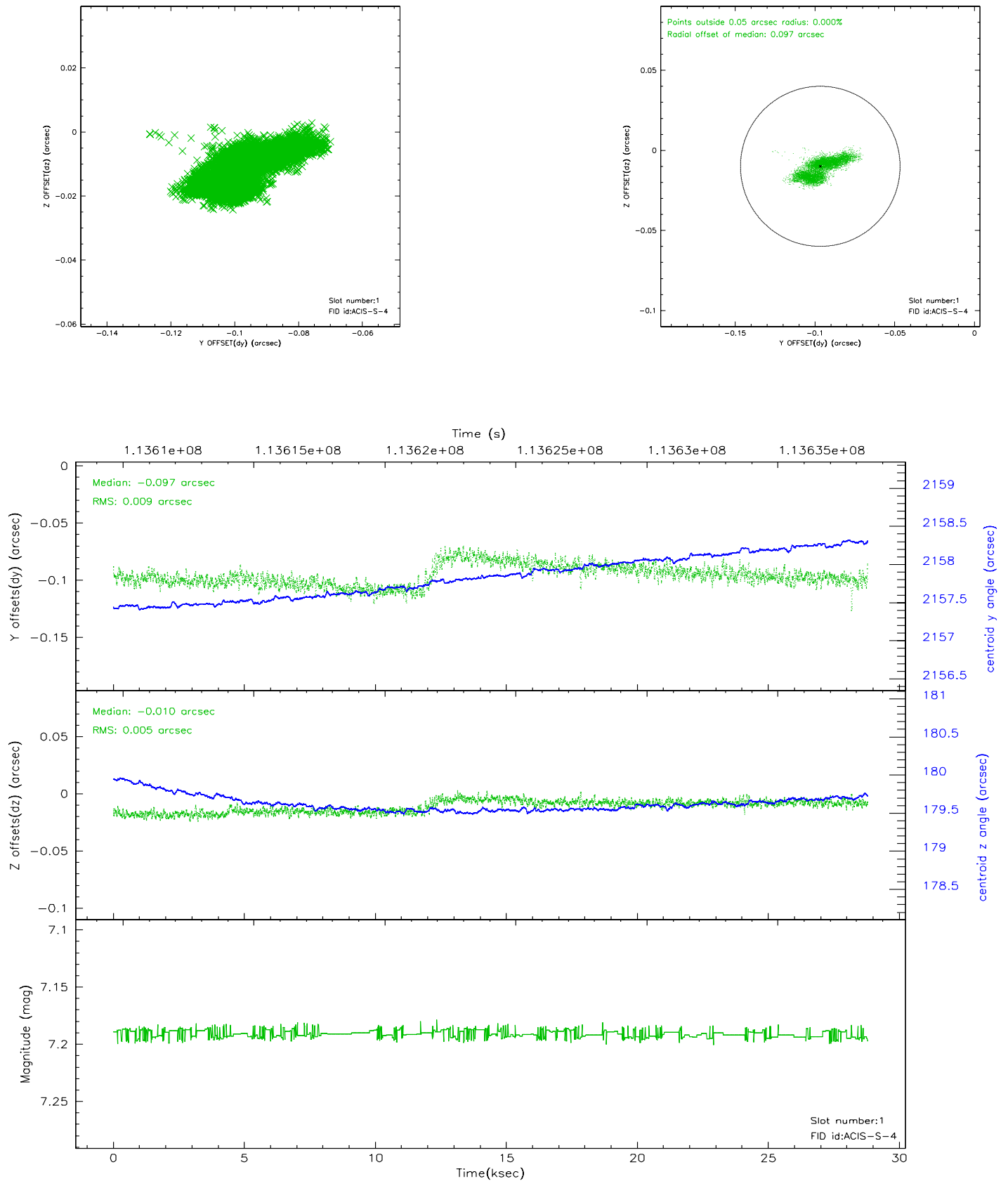


2.5 FID Slots

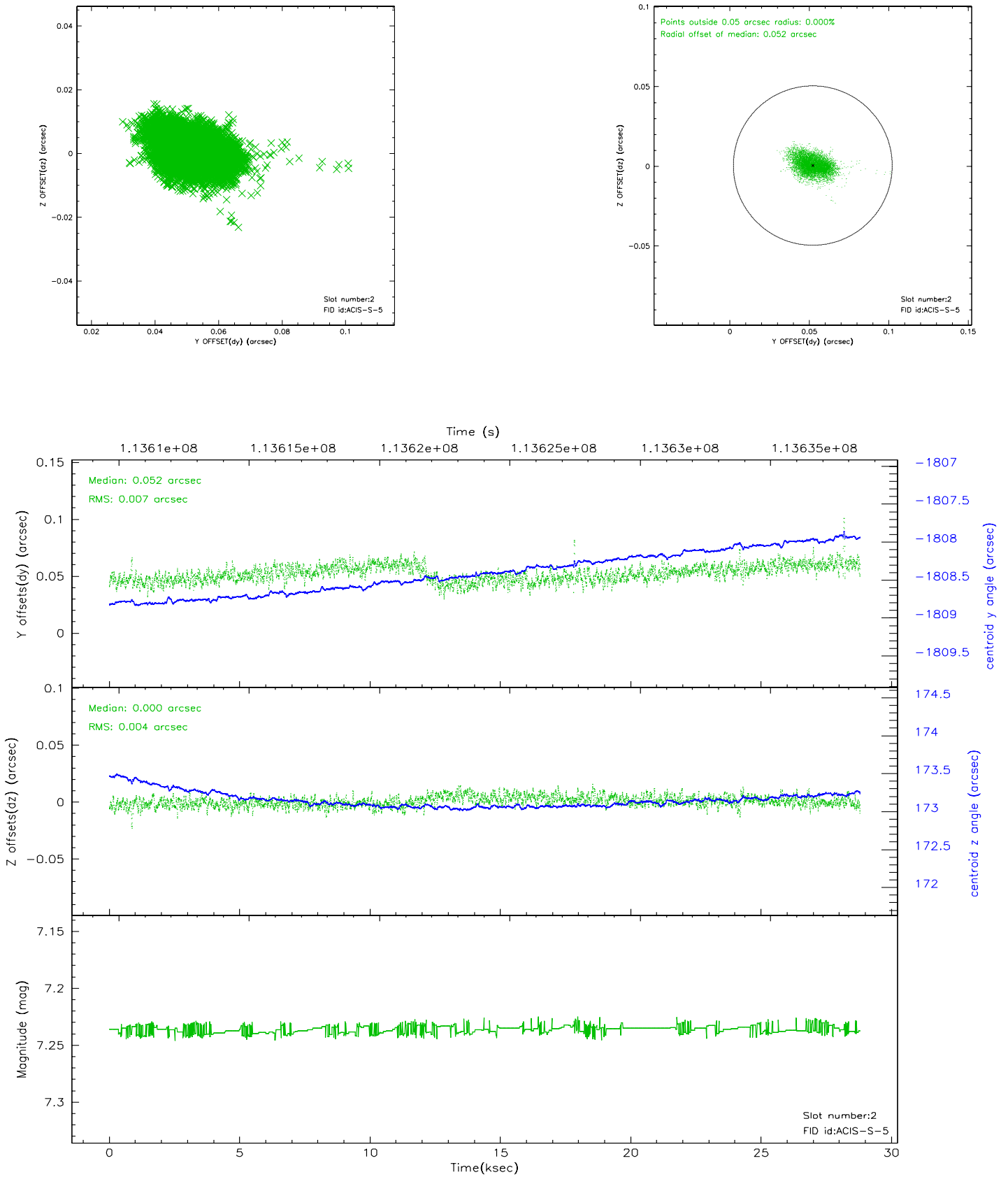
2.5.1 Slot 0



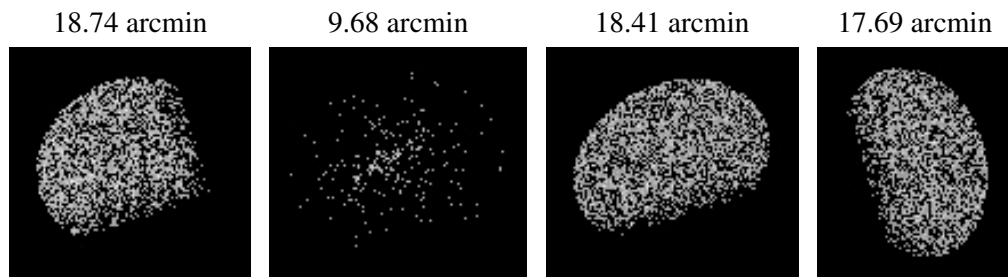
2.5.2 Slot 1



2.5.3 Slot 2



3 Point Sources



A Summary

A.1 Status

V&V Scientist	Jen Lauer
V&V Date (YYYY-MM-DD)	2006.12.19
V&V Edition	1
V&V Disposition and Status	OK
V&V Charge Time	28.378

A.2 Comments