

V&V Reference Report

L2 ASCDS Version : 8.4.5

Observation 2145 - L2 Version 3
Chandra X-Ray Center

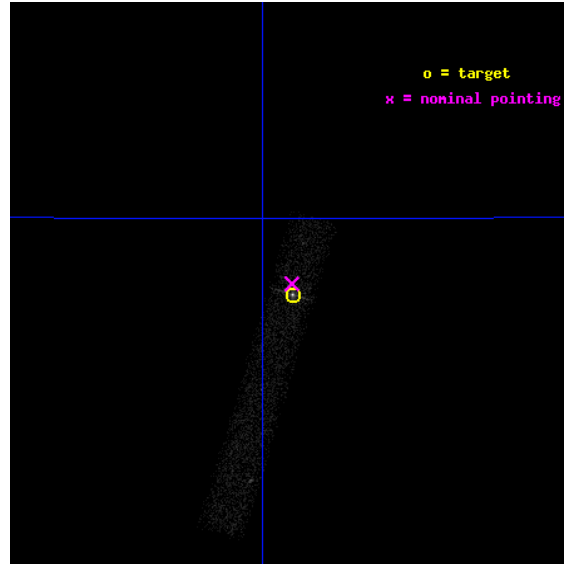
L2 Processing Date : Sep 15 2012

Contents

1	Front	2
2	OBI	3
2.1	OBI	3
2.1.1	Images	3
2.1.2	Bias	3
2.1.3	Parameters	4
2.1.4	Events	4
2.2	Compared Parameters	5
2.3	Aspect	6
2.4	Star Slots	9
2.4.1	Slot 3	9
2.4.2	Slot 4	10
2.4.3	Slot 5	11
2.4.4	Slot 6	12
2.4.5	Slot 7	13
2.5	FID Slots	14
2.5.1	Slot 0	14
2.5.2	Slot 1	15
2.5.3	Slot 2	16
A	Summary	17
A.1	Status	17
A.2	Comments	17

1 Front

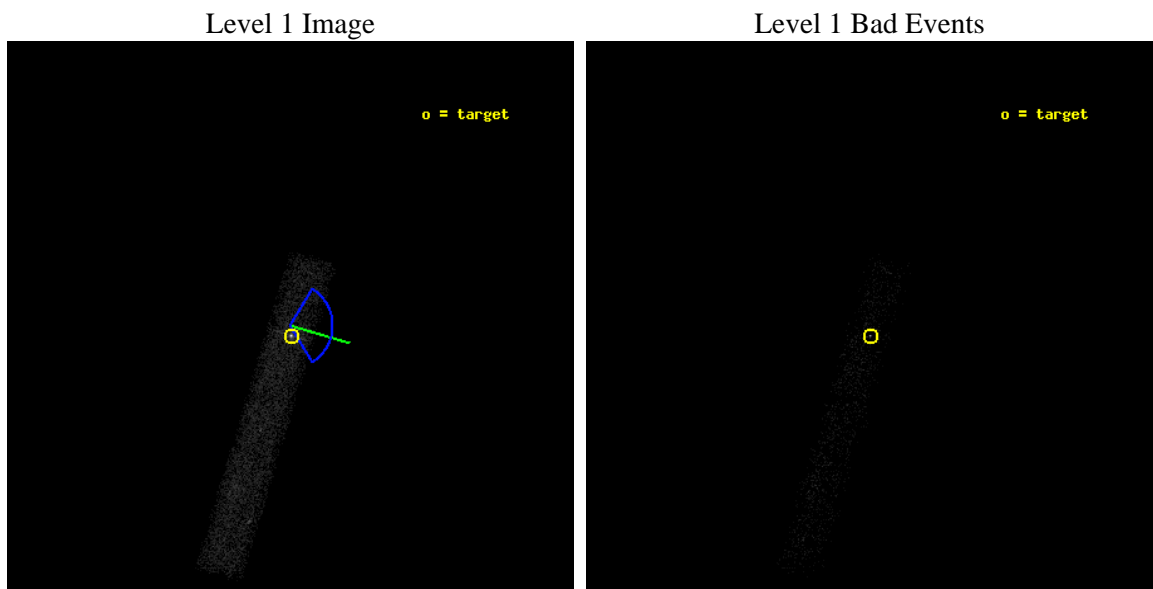
seq_num	700335	Sequence number
obs_id	2145	Observation id
title	AN UNBIASED SURVEY OF X-RAY AND OPTICAL EMISSION FROM EXTENDED RADIO JETS IN AGN	Proposal title
observer	Dr. Rita Sambruna	Principal investigator
object	1928+738	Source name
dtcycle	0	
cycle	P	events from which exps? Prim/Second/Both
ra_targ	291.952083	Observer's specified target RA [deg]
dec_targ	73.967222	Observer's specified target Dec [deg]
ra_nom	291.95371901606	Nominal RA [deg]
dec_nom	73.971738027752	Nominal Dec [deg]
roll_nom	106.92759424146	Nominal Roll [deg]
revision	3	Processing version of data
ontime	9253.4742282927	Sum of GTIs [s]
livetime	8392.4126866431	Livetime [s]
ontime7	9253.4742282927	Sum of GTIs [s]
l2events	12746	Number of level 2 events



2 OBI

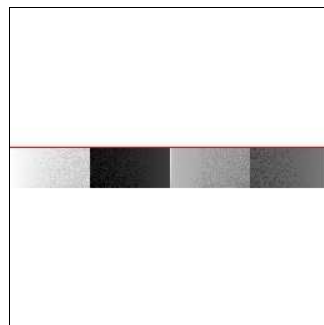
2.1 OBI

2.1.1 Images



2.1.2 Bias

Chip 7



2.1.3 Parameters

obi_num	2	Obi number	sched_exp_time	9400.000000	[s] Scheduled observation exposure time
ascdsver	8.4.5	Processing system revision	ontime	9253.4742282927	Sum of GTIs [s]
caldbver	4.5.1.1	 	ontime7	9253.4742282927	Sum of GTIs [s]
date	2012-09-15T15:47:26	Date and time of file creation	l1events	19848	Number of level 1 events
revision	3	Processing version of data			

2.1.4 Events

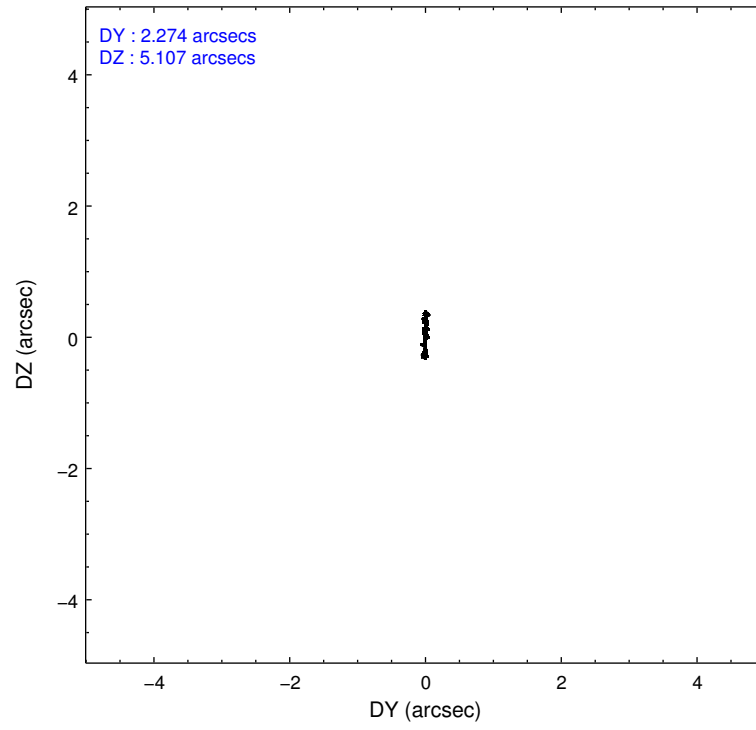
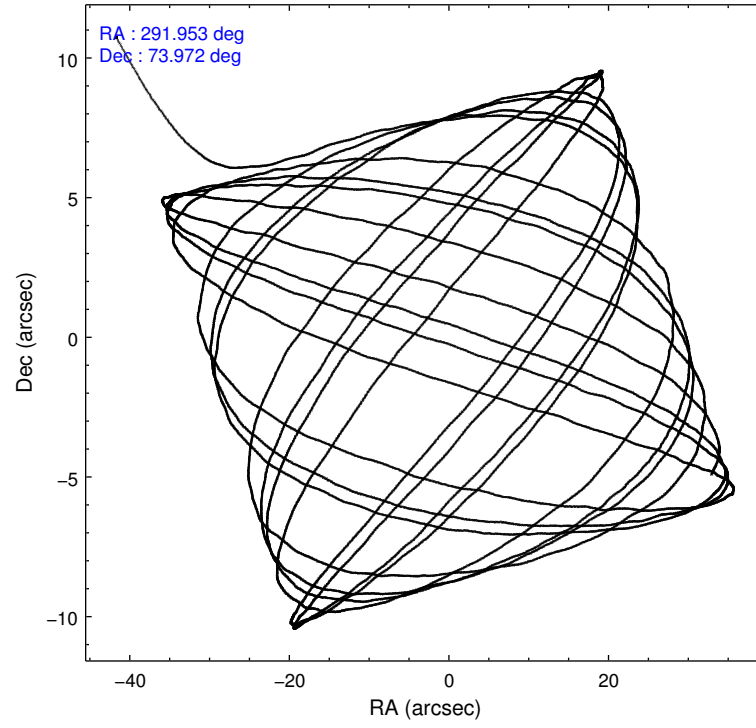
	ccd 7
level 1 events	19848
rejected events	6524
rejected %	32%

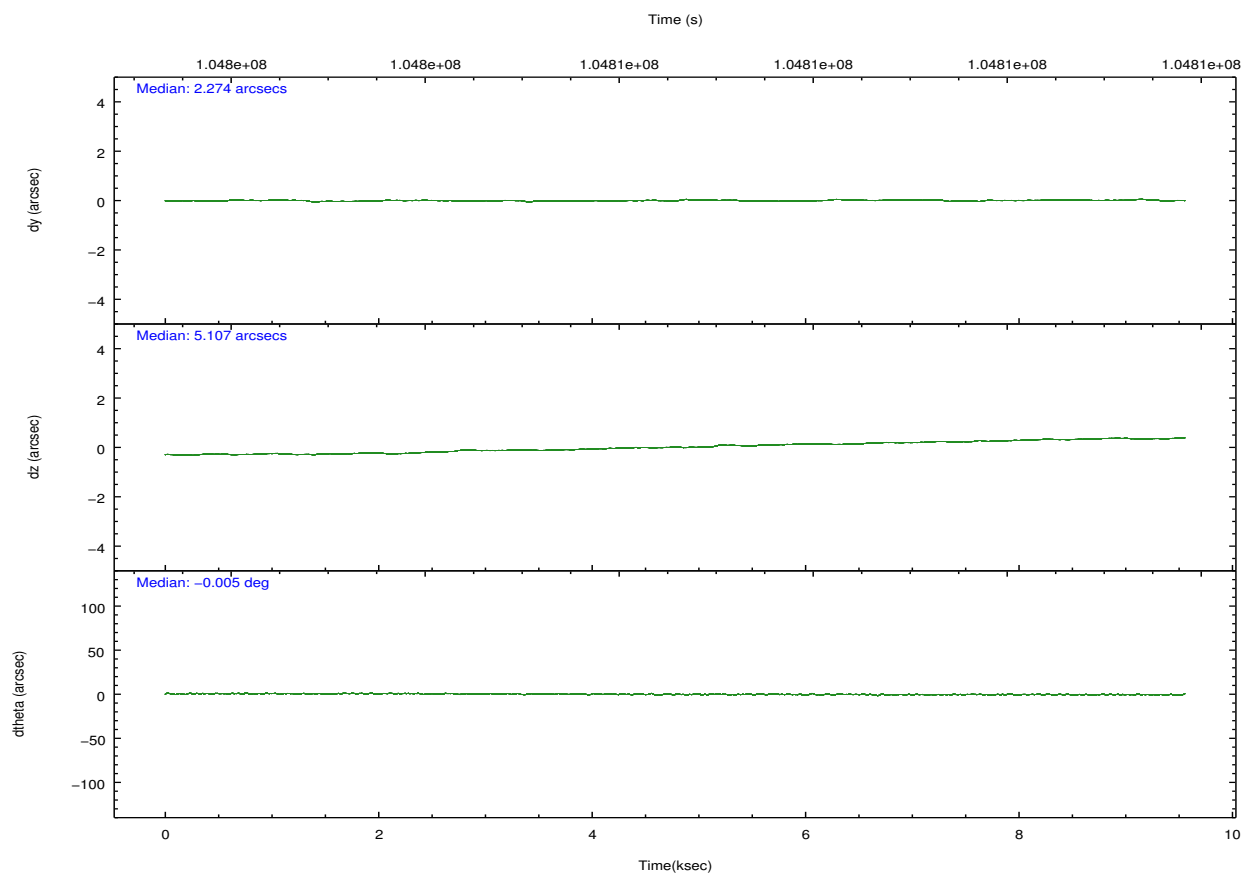
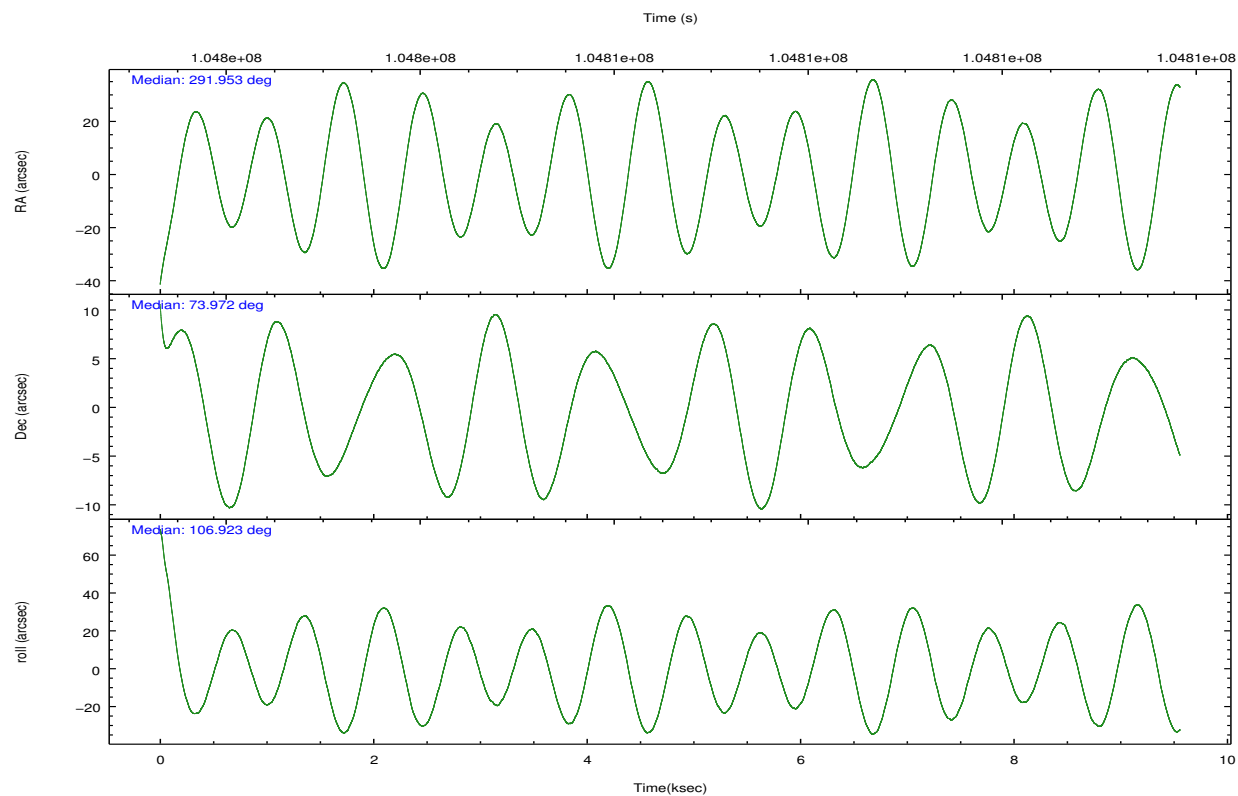
	ccd 7
grade 0 events	2980
	15%
grade 1 events	92
	0%
grade 2 events	3035
	15%
grade 3 events	1645
	8%
grade 4 events	1640
	8%
grade 5 events	1318
	6%
grade 6 events	4025
	20%
grade 7 events	5113
	25%

2.2 Compared Parameters

Parameter	Planned	Actual	Parameter	Planned	Actual
Instrument	ACIS	ACIS	Obspar format version number	7	7
Detector	ACIS-7	ACIS-7	Obspar file type	PREDICTED	ACTUAL
Grating	NONE	NONE	Obspar update status	NONE	UPDATED
Data mode	FAINT	FAINT	Number of optional ACIS chips dropped	0	0
Observation mode	POINTING	POINTING	On-chip summing requested	N	N
[deg] Pointing RA	292.026546	291.9537190160634	Subarray requested	CUSTOM	1/8
[deg] Pointing Dec	73.953228	73.9717380277517	Subarray start row	449	449
[deg] Pointing Roll	106.700960	106.9275942414626	Subarray row count	128	128
[deg] Roll angle	90.000000	90.000000	Alternating exposures requested	N	N
[deg] Roll tolerance	59.000000	59.000000	[s] Primary exposure time	0.000000	0.4
Roll constraint allows 180D rotation	N	N			
[mm] SIM focus pos	-0.684267	-0.6828225247311905			
[mm] SIM defocus	0	0.001444936568705701			
[mm] SIM translation stage pos	-190.132523	-190.1425803651734			
[mm] SIM translation stage offset	0	0.01005778216563158			
[s] Observation start time (MET)	104801954.184000	104801107.14135			
Observation start date	2001-04-27T23:38:10	2001-04-27T23:25:07			
[s] Observation end time (MET)	104811354.184000	104812042.86677			
Observation end date	2001-04-28T02:14:50	2001-04-28T02:27:22			
Read mode	TIMED	TIMED			

2.3 Aspect



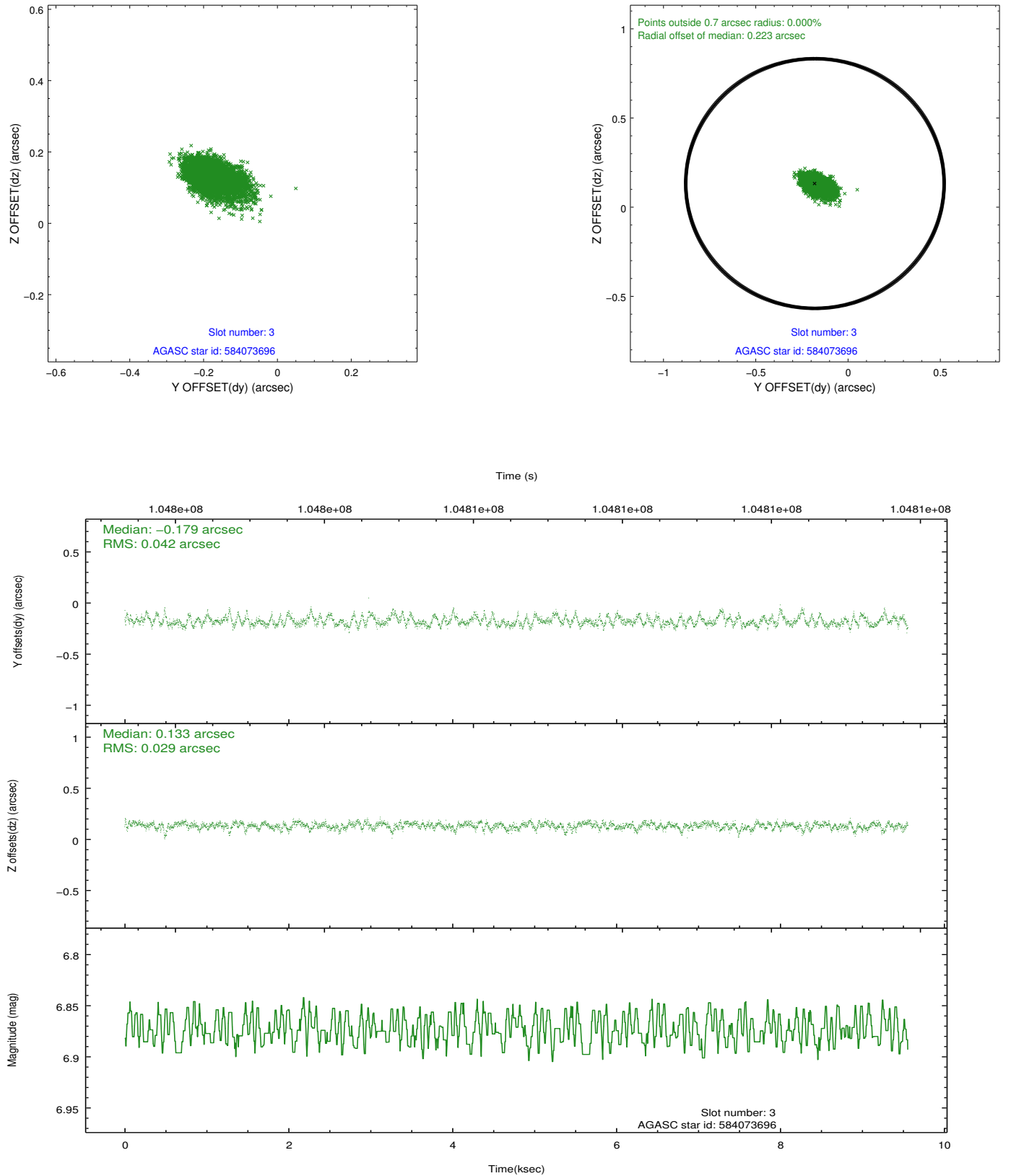


Slot Statistics

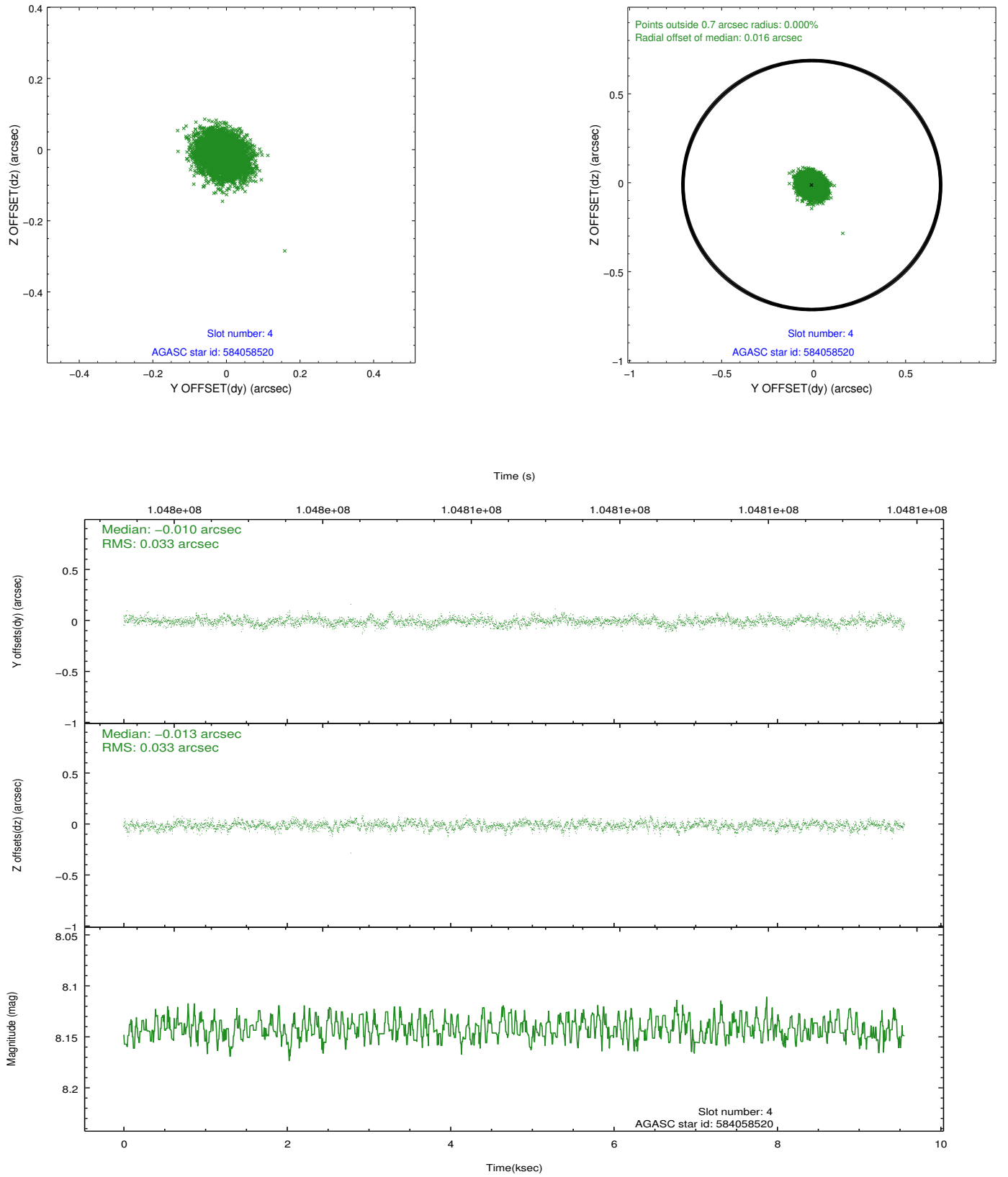
slot	status	id	mag	n_pts	med_dy	med_dz	dr1	dr2	ra	dec	mean_y	mean_z
0	FID	ACIS-S-2	7.11	2331	-0.032	-0.003	0.007	0.013	0.000000	0.000000	-754.89	-1726.21
1	FID	ACIS-S-4	7.20	2331	-0.030	0.016	0.006	0.010	0.000000	0.000000	2158.10	181.78
2	FID	ACIS-S-5	7.24	2331	0.031	-0.005	0.007	0.013	0.000000	0.000000	-1806.98	175.98
3	GUIDE	584073696	6.87	4663	-0.179	0.133	0.052	0.092	293.792631	74.377476	995.19	-2086.09
4	GUIDE	584058520	8.14	4660	-0.010	-0.013	0.050	0.081	292.919697	74.241817	750.65	-1137.53
5	GUIDE	584070048	8.81	4663	0.145	0.060	0.086	0.138	289.511723	74.303845	1962.24	1967.38
6	GUIDE	584068144	9.15	4657	0.032	0.005	0.073	0.119	293.270586	73.654716	-1378.49	-902.11
7	GUIDE	584070872	9.41	4659	0.010	-0.183	0.075	0.127	292.547035	73.360860	-2194.78	97.32

2.4 Star Slots

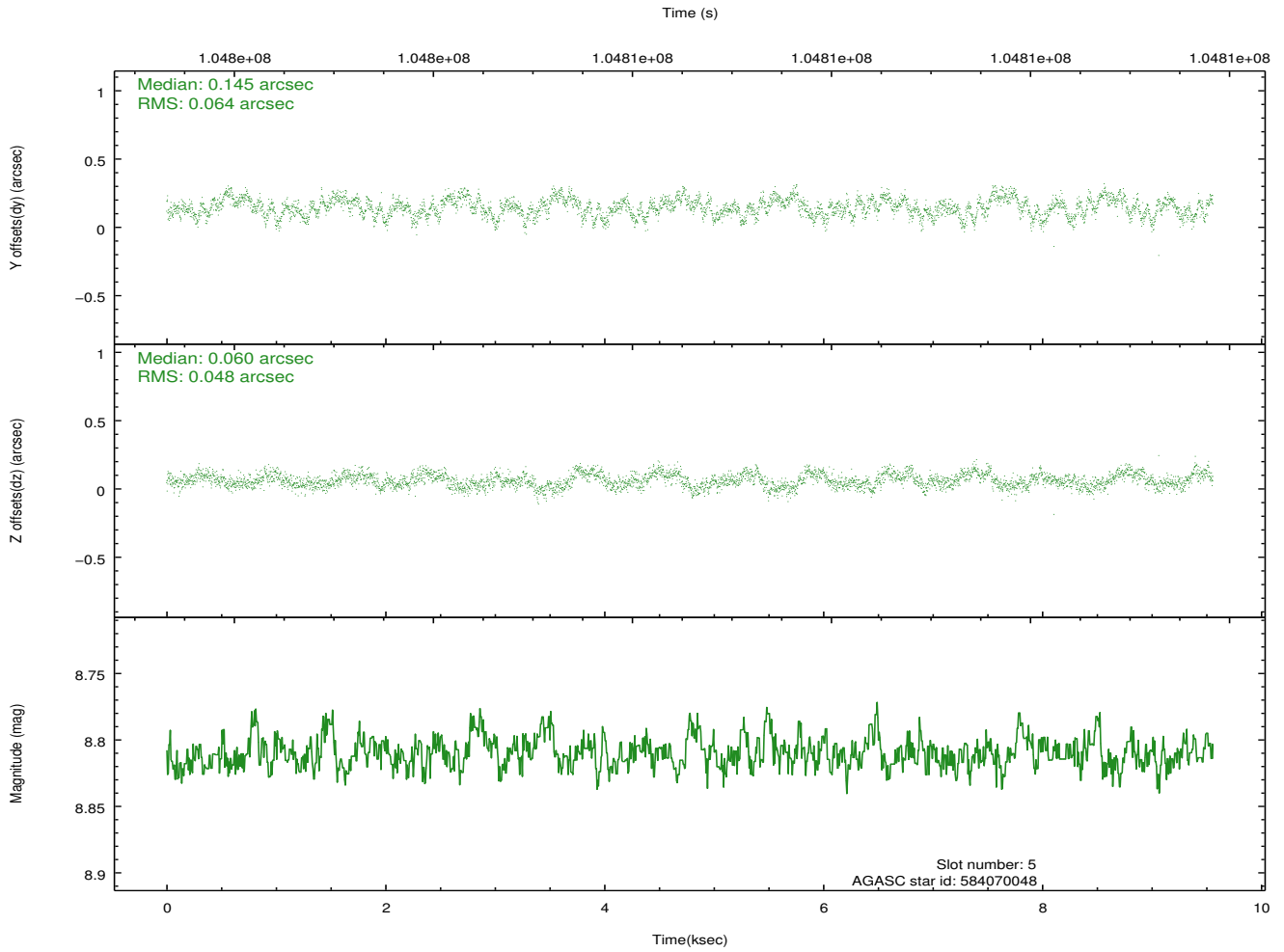
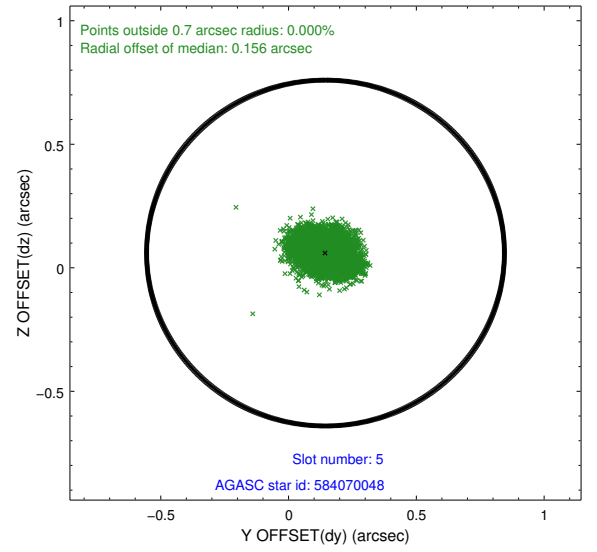
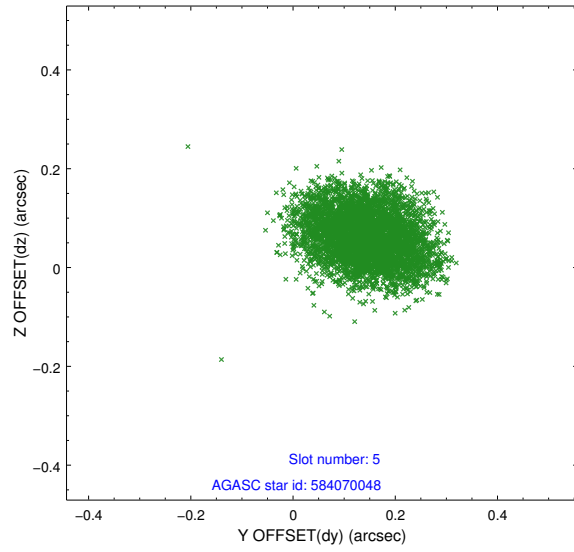
2.4.1 Slot 3



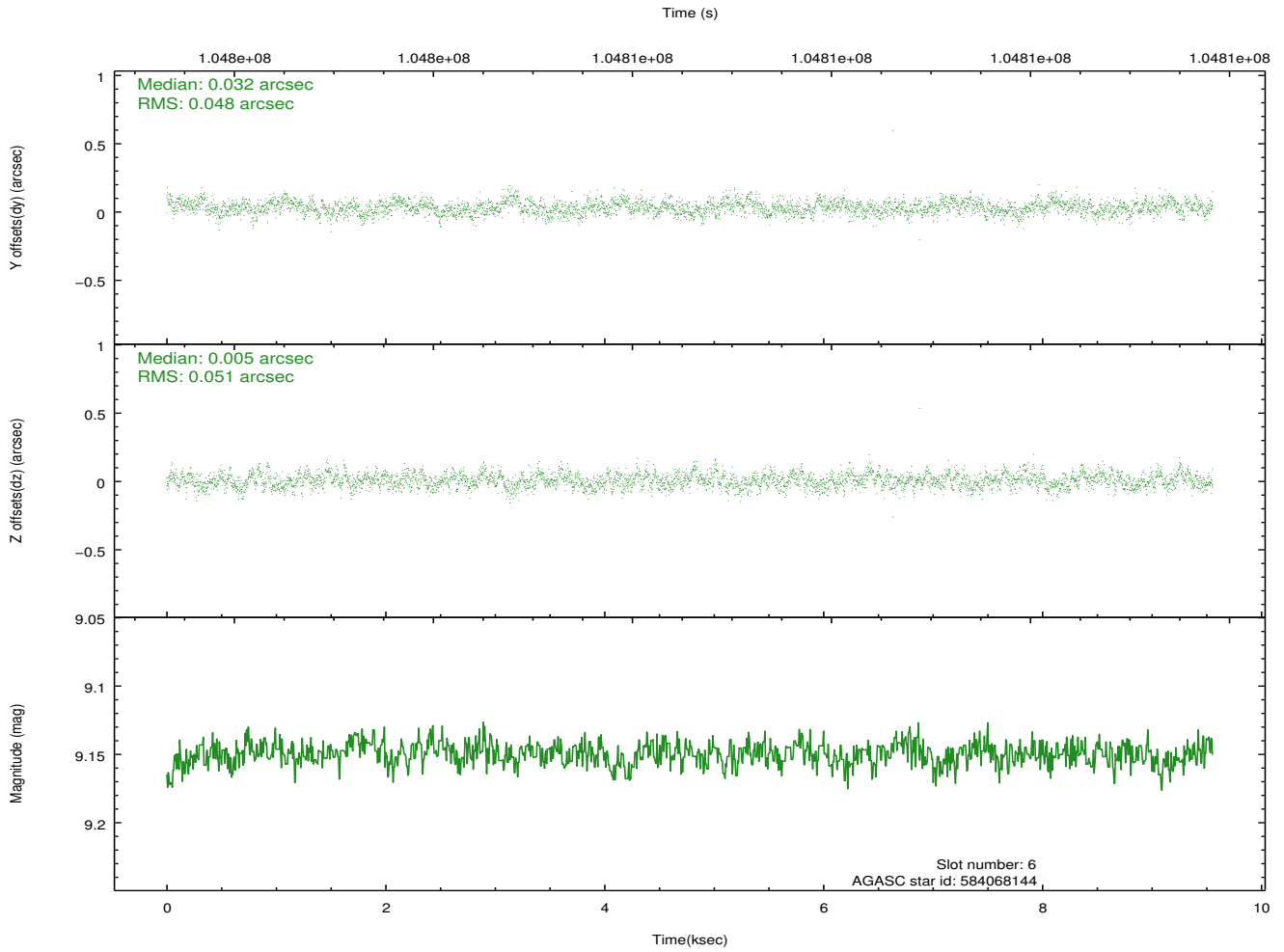
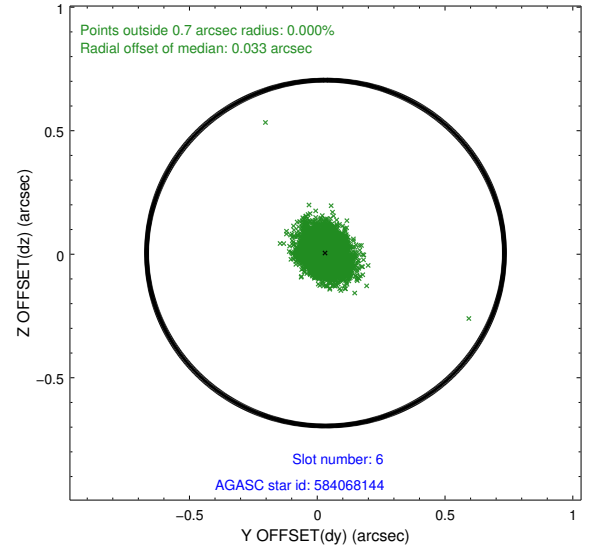
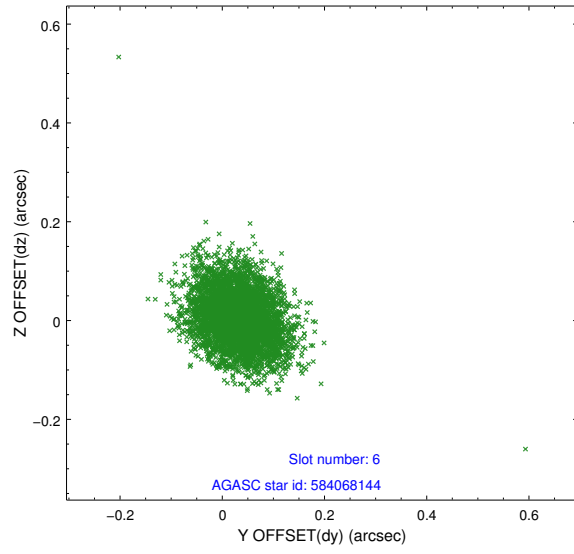
2.4.2 Slot 4



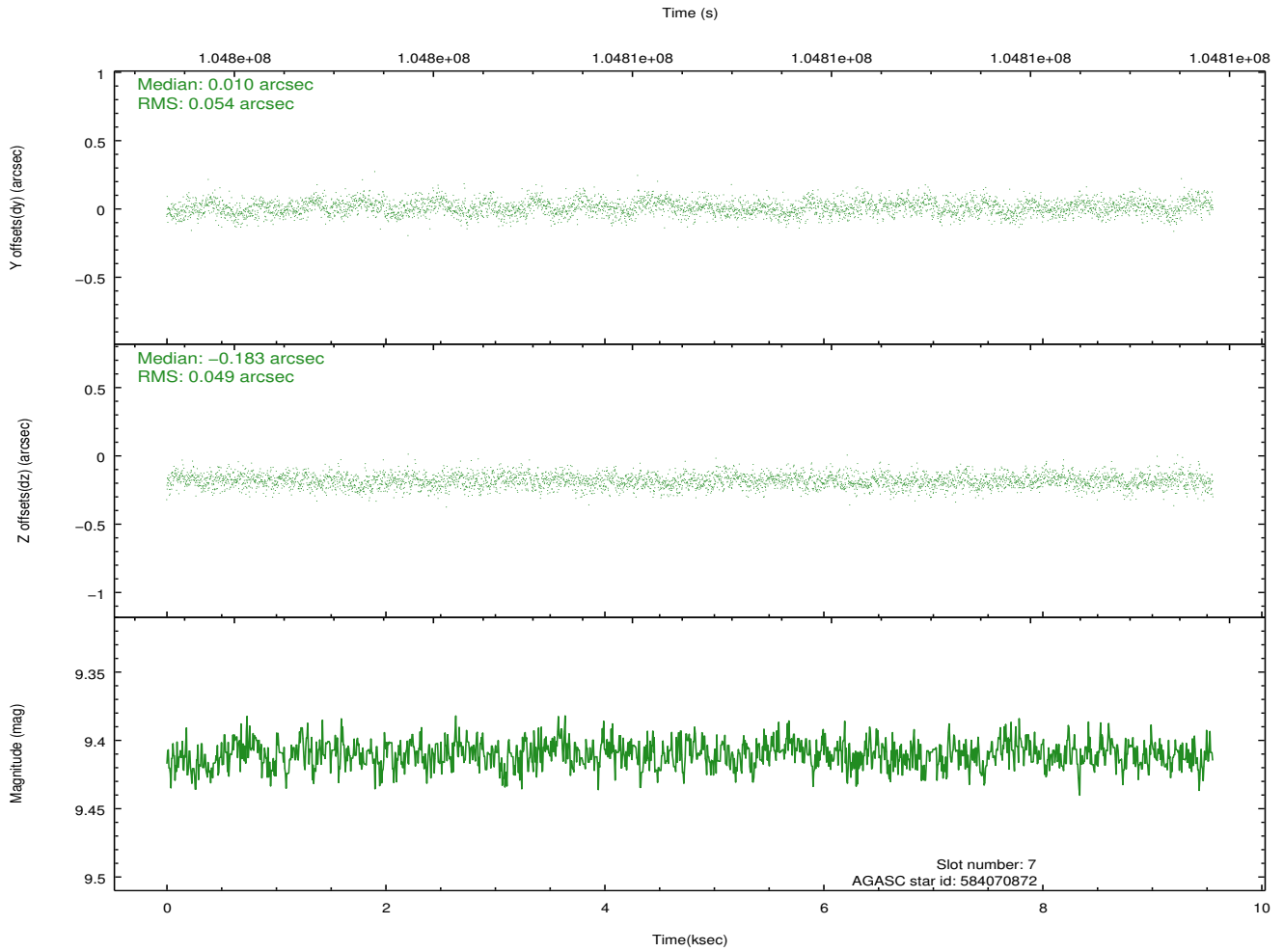
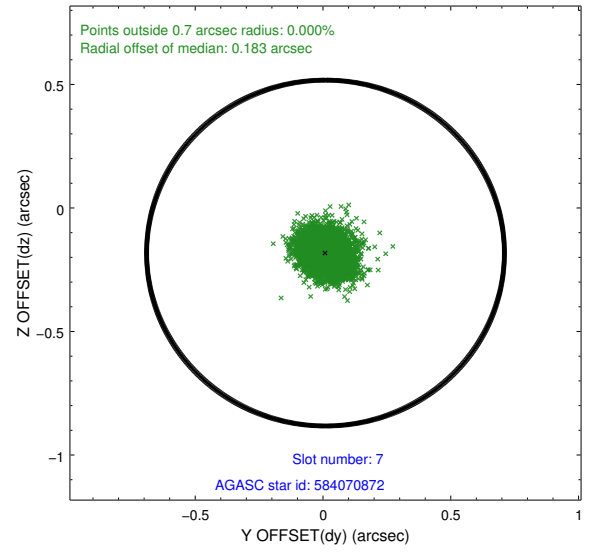
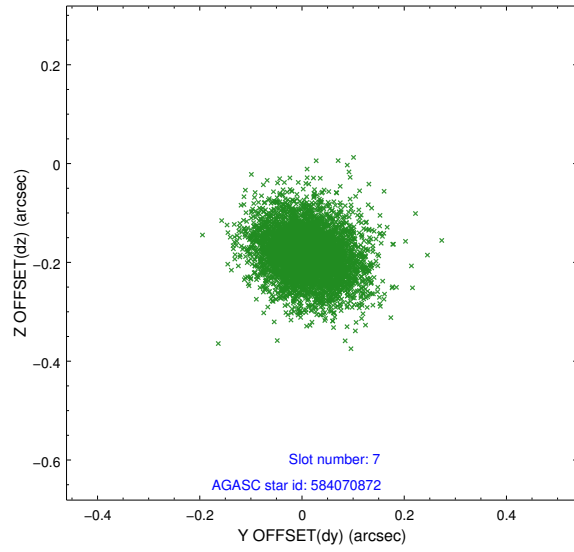
2.4.3 Slot 5



2.4.4 Slot 6

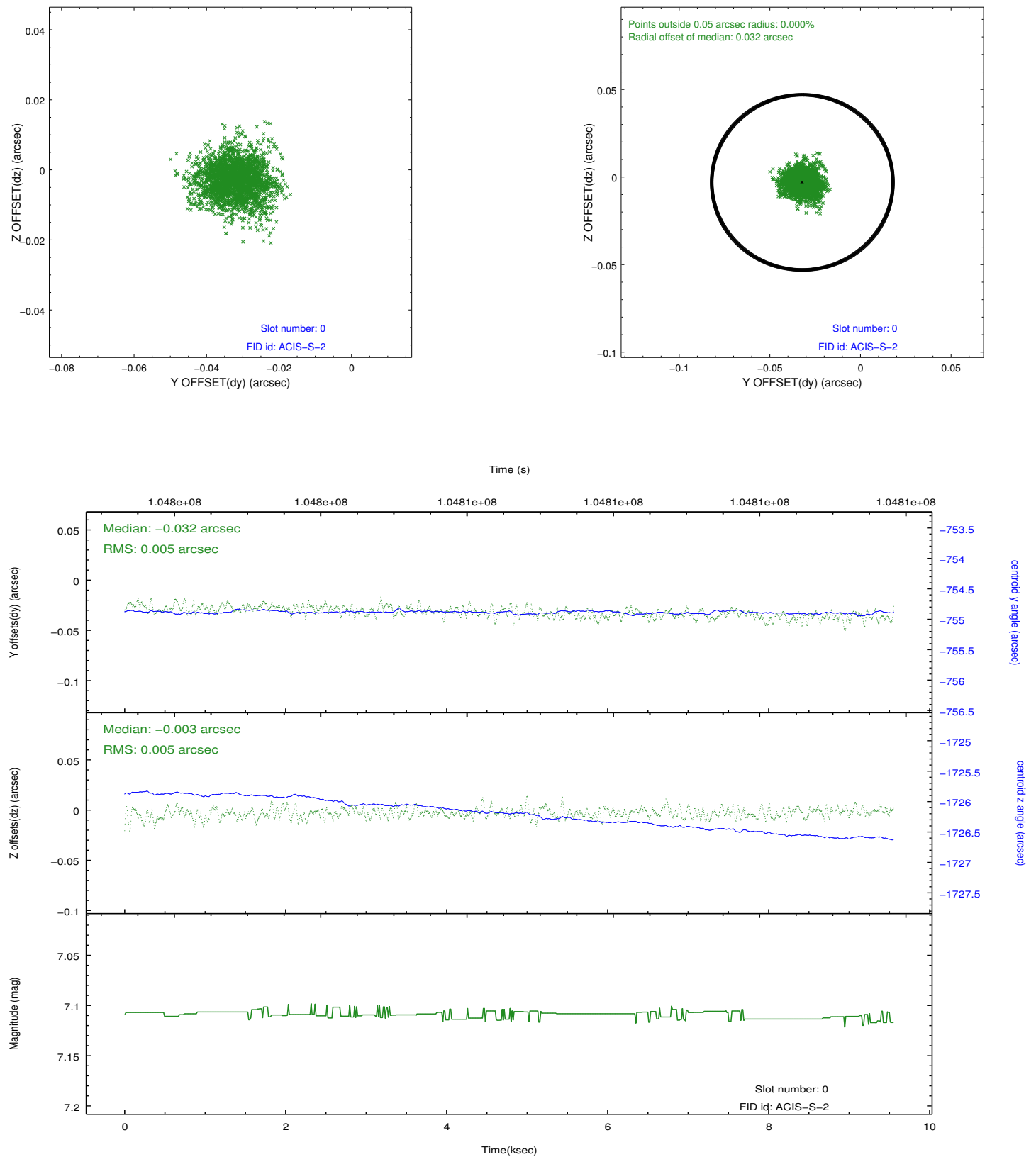


2.4.5 Slot 7

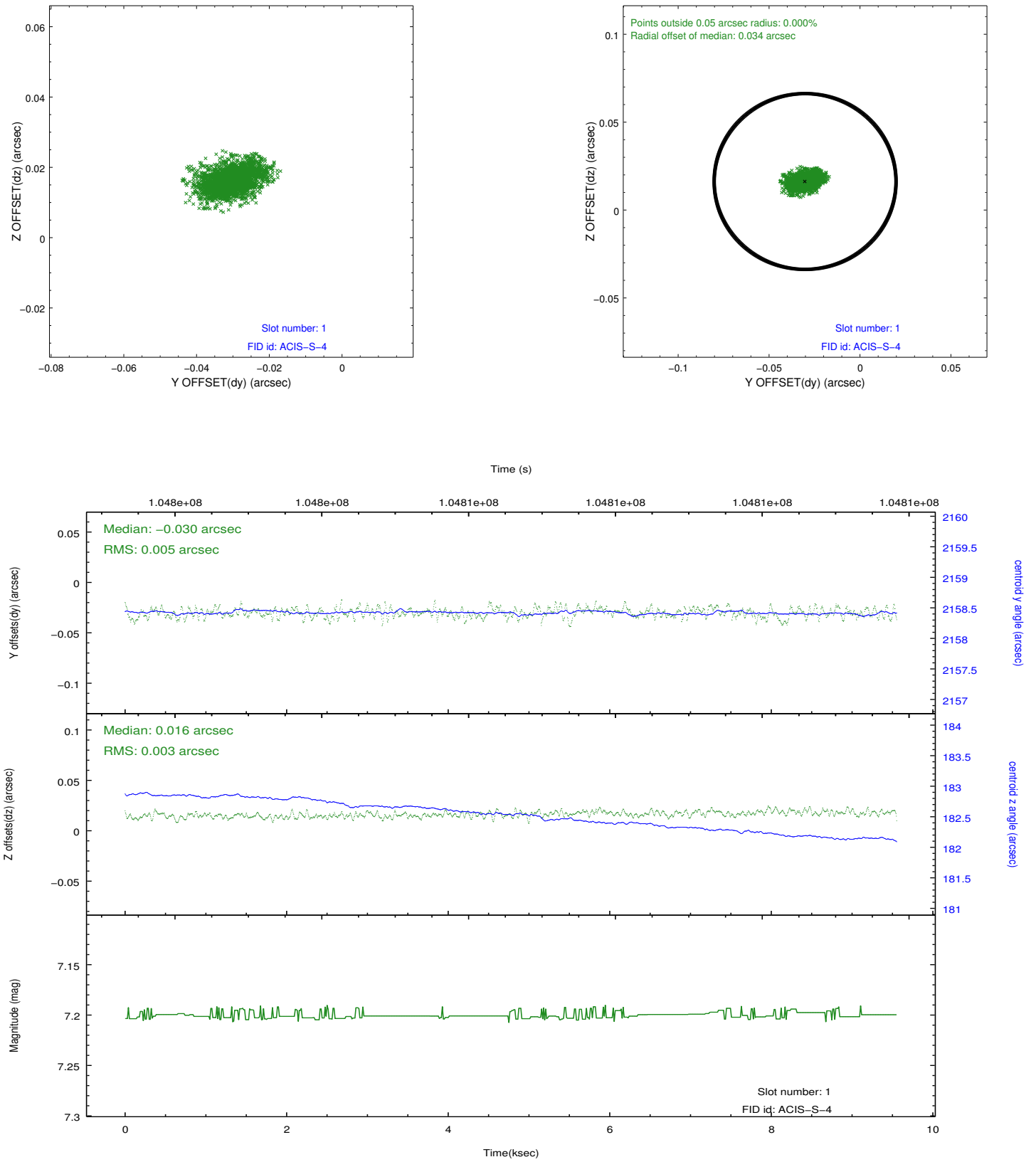


2.5 FID Slots

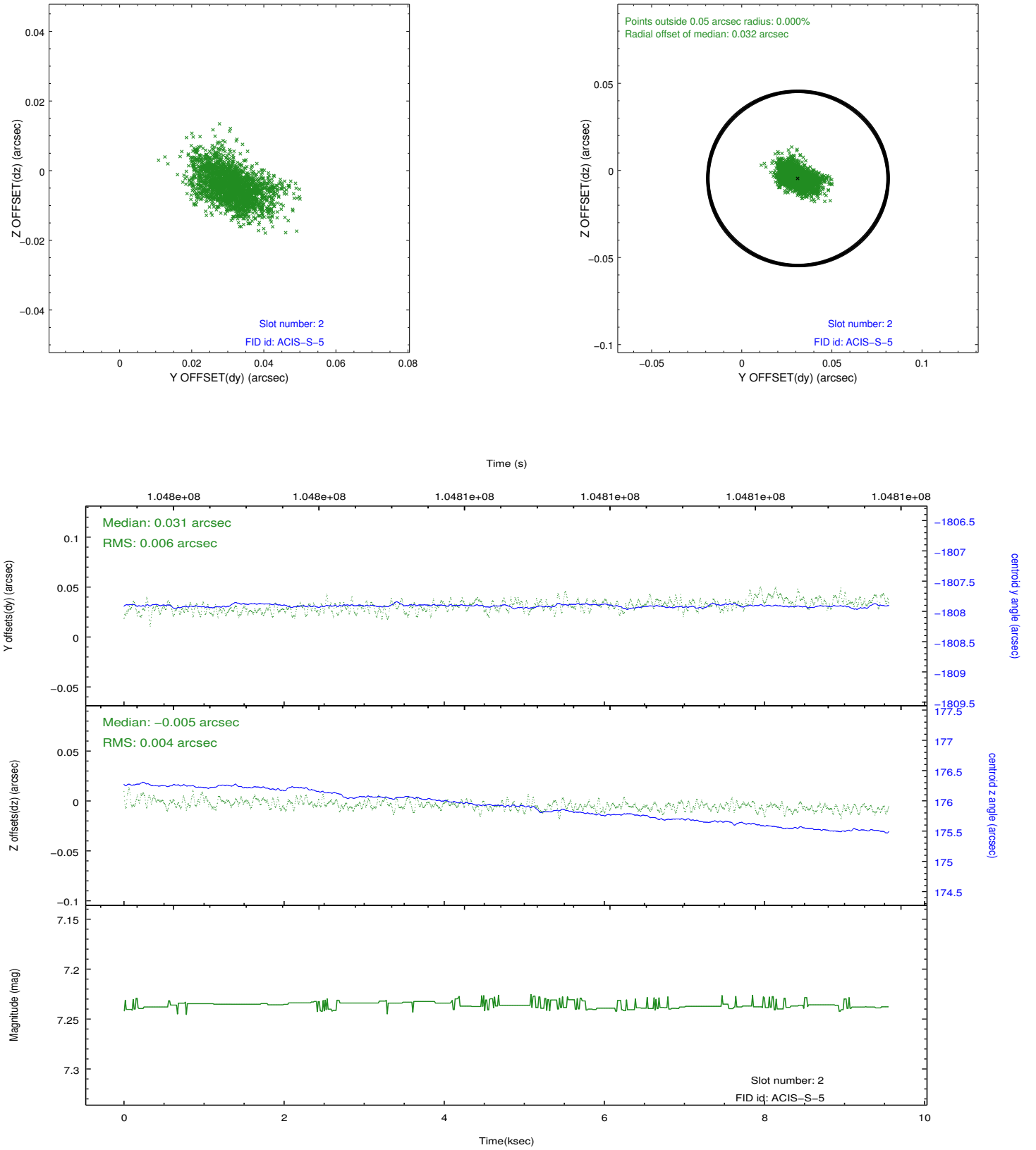
2.5.1 Slot 0



2.5.2 Slot 1



2.5.3 Slot 2



A Summary

A.1 Status

V&V Scientist	Beth Sundheim
V&V Date (YYYY-MM-DD)	2012.09.19
V&V Edition	1
V&V Disposition and Status	OK
V&V Charge Time	9.3

A.2 Comments

Charge time for this observation remains at previous value of 9.3 ksec.
Roll preference met.