

# V&V Reference Report

## L2 ASCDS Version : 8.4.5

Observation 2136 - L2 Version 3  
Chandra X-Ray Center

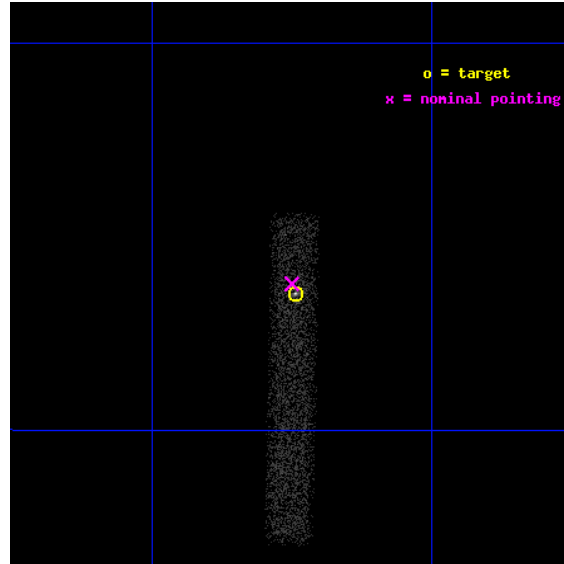
L2 Processing Date : Sep 16 2012

## Contents

<b>1</b>	<b>Front</b>	<b>2</b>
<b>2</b>	<b>OBI</b>	<b>3</b>
2.1	OBI . . . . .	3
2.1.1	Images . . . . .	3
2.1.2	Bias . . . . .	3
2.1.3	Parameters . . . . .	4
2.1.4	Events . . . . .	4
2.2	Compared Parameters . . . . .	5
2.3	Aspect . . . . .	6
2.4	Star Slots . . . . .	9
2.4.1	Slot 4 . . . . .	9
2.4.2	Slot 5 . . . . .	10
2.4.3	Slot 6 . . . . .	11
2.4.4	Slot 7 . . . . .	12
2.5	FID Slots . . . . .	13
2.5.1	Slot 0 . . . . .	13
2.5.2	Slot 1 . . . . .	14
2.5.3	Slot 2 . . . . .	15
<b>A</b>	<b>Summary</b>	<b>16</b>
A.1	Status . . . . .	16
A.2	Comments . . . . .	16

# 1 Front

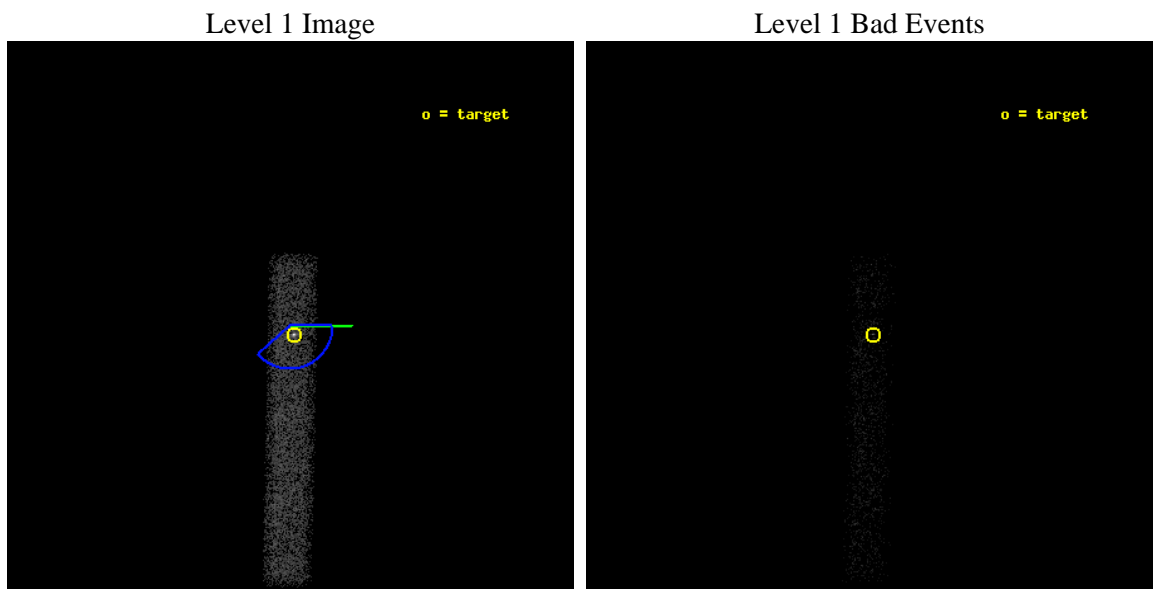
seq_num	700326	Sequence number
obs_id	2136	Observation id
title	AN UNBIASED SURVEY OF X-RAY AND OPTICAL EMISSION FROM EXTENDED RADIO JETS IN AGN	Proposal title
observer	Dr. Rita Sambruna	Principal investigator
object	1040+123	Source name
dtcycle	0	&#160
cycle	P	events from which exps? Prim/Second/Both
ra_targ	160.685833	Observer's specified target RA [deg]
dec_targ	12.058611	Observer's specified target Dec [deg]
ra_nom	160.68753503059	Nominal RA [deg]
dec_nom	12.062806850738	Nominal Dec [deg]
roll_nom	91.156216375831	Nominal Roll [deg]
revision	3	Processing version of data
ontime	11469.200170904	Sum of GTIs [s]
livetime	10401.959160987	Livetime [s]
ontime7	11469.200170904	Sum of GTIs [s]
l2events	7658	Number of level 2 events



## 2 OBI

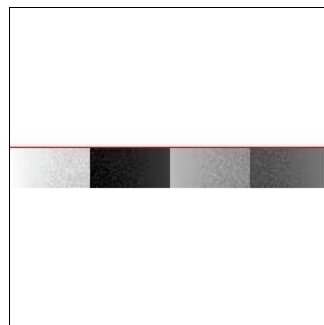
### 2.1 OBI

#### 2.1.1 Images



#### 2.1.2 Bias

Chip 7



### 2.1.3 Parameters

obi_num	0	Obi number	sched_exp_time	11000.000000	[s] Scheduled observation exposure time
ascdsver	8.4.5	Processing system revision	ontime	11469.200170904	Sum of GTIs [s]
caldsver	4.5.1.1	&#160	ontime7	11469.200170904	Sum of GTIs [s]
date	2012-09-16T04:48:14	Date and time of file creation	l1events	14825	Number of level 1 events
revision	3	Processing version of data			

### 2.1.4 Events

	<b>ccd 7</b>
level 1 events	14825
rejected events	6781
rejected %	45%

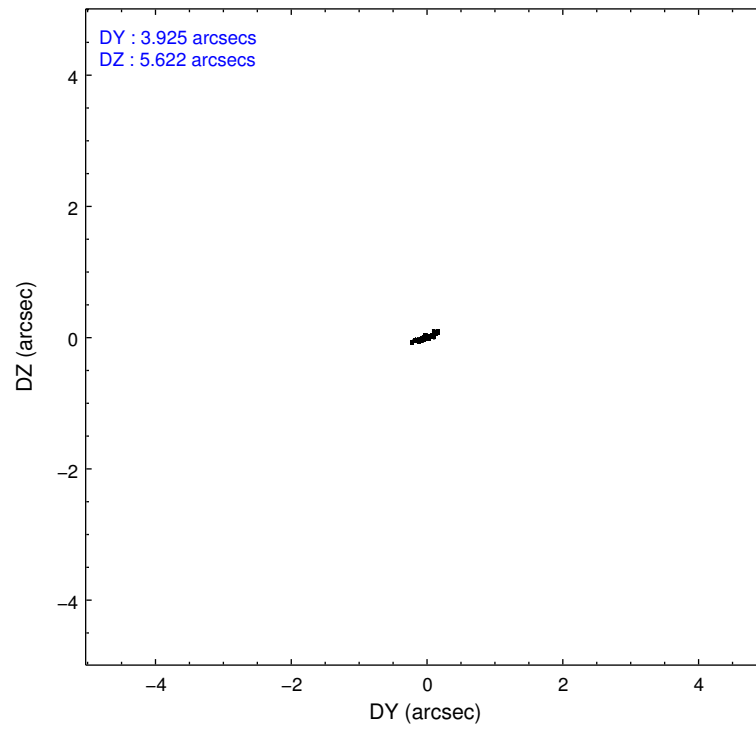
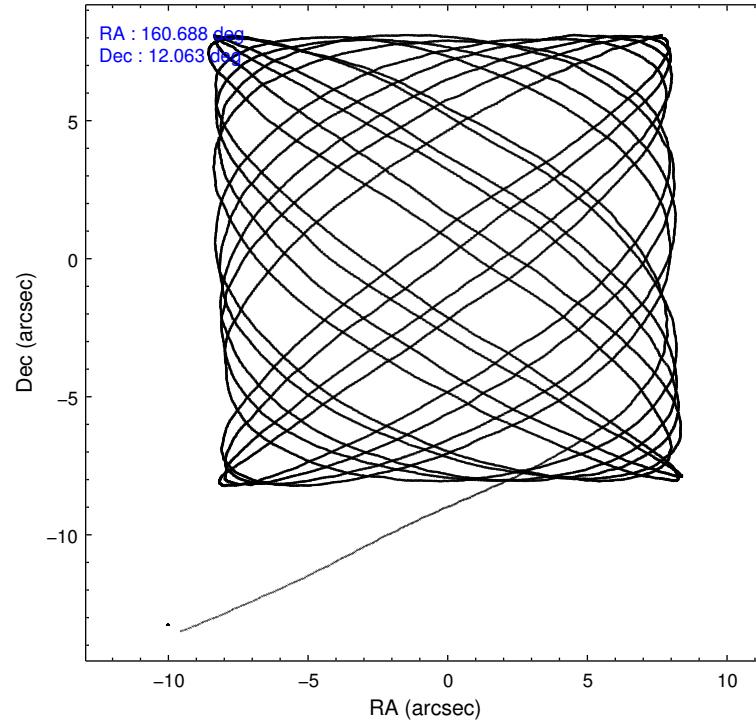
	<b>ccd 7</b>
grade 0 events	1434
	9%
grade 1 events	24
	0%
grade 2 events	1659
	11%
grade 3 events	1038
	7%
grade 4 events	1000
	6%
grade 5 events	1174
	7%
grade 6 events	3129
	21%
grade 7 events	5367
	36%

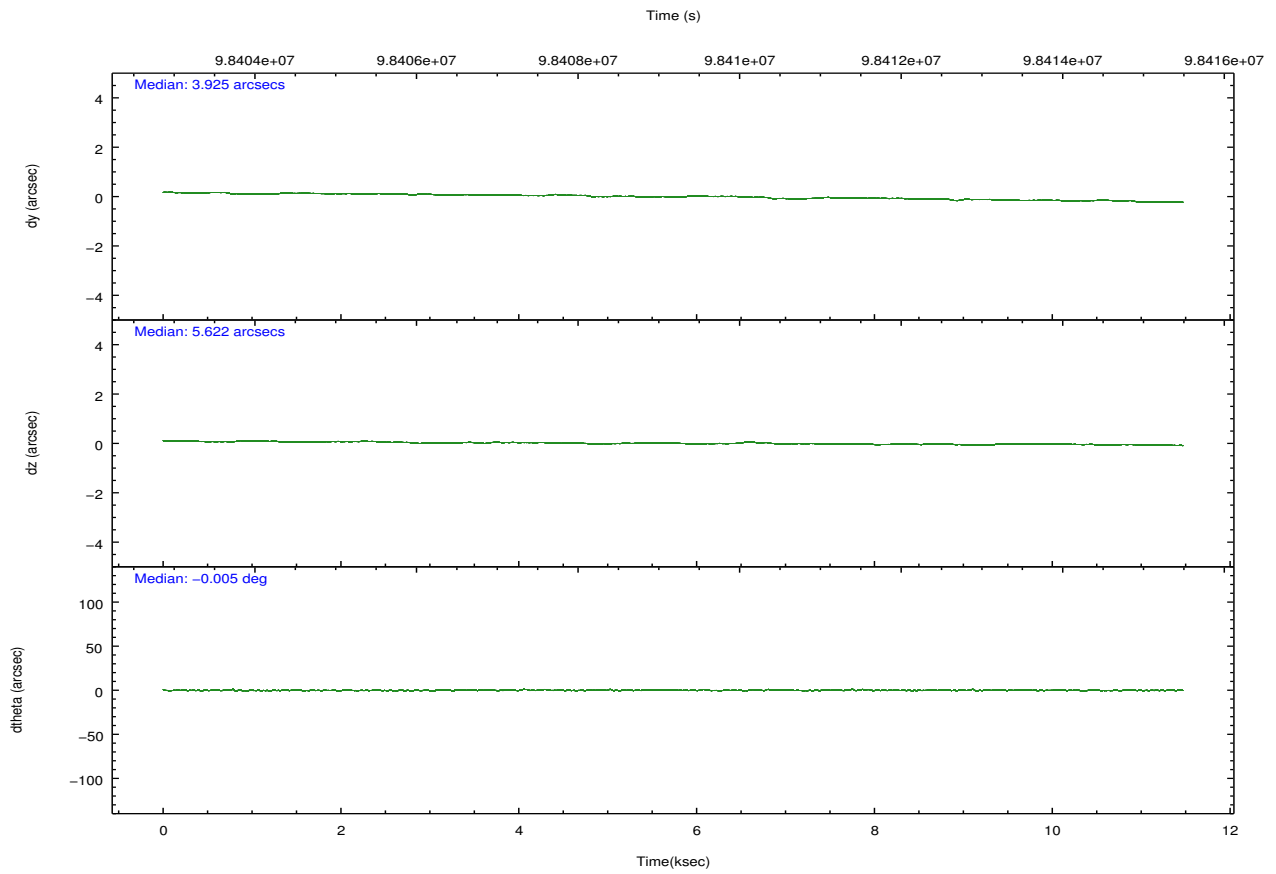
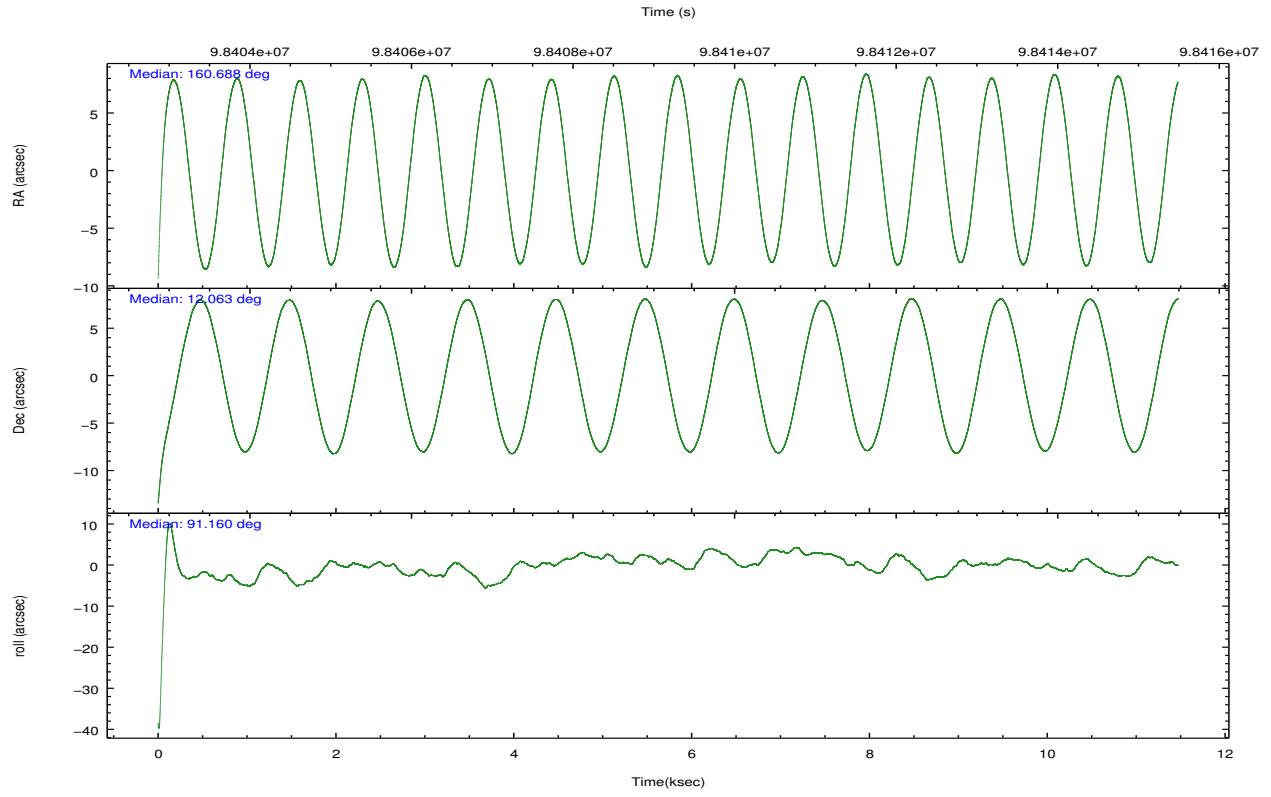


## 2.2 Compared Parameters

Parameter	Planned	Actual	Parameter	Planned	Actual
Instrument	ACIS	ACIS	Obspar format version number	7	7
Detector	ACIS-7	ACIS-7	Obspar file type	PREDICTED	ACTUAL
Grating	NONE	NONE	Obspar update status	NONE	UPDATED
Data mode	FAINT	FAINT	Number of optional ACIS chips dropped	0	0
Observation mode	POINTING	POINTING	On-chip summing requested	N	N
[deg] Pointing RA	160.702195	160.6875350305914	Subarray requested	CUSTOM	1/8
[deg] Pointing Dec	12.039555	12.06280685073818	Subarray start row	449	449
[deg] Pointing Roll	90.996587	91.15621637583135	Subarray row count	128	128
[deg] Roll angle	160.000000	160.000000	Alternating exposures requested	N	N
[deg] Roll tolerance	69.000000	69.000000	[s] Primary exposure time	0.000000	0.4
Roll constraint allows 180D rotation	N	N			
[mm] SIM focus pos	-0.684267	-0.6828225247311905			
[mm] SIM defocus	0	0.001444936568705701			
[mm] SIM translation stage pos	-190.132523	-190.1400660498719			
[mm] SIM translation stage offset	0	0.00754346686406393			
[s] Observation start time (MET)	98403910.184000	98402810.38133			
Observation start date	2001-02-12T22:24:06	2001-02-12T22:06:50			
[s] Observation end time (MET)	98414910.184000	98415171.881807			
Observation end date	2001-02-13T01:27:26	2001-02-13T01:32:51			
Read mode	TIMED	TIMED			

## 2.3 Aspect



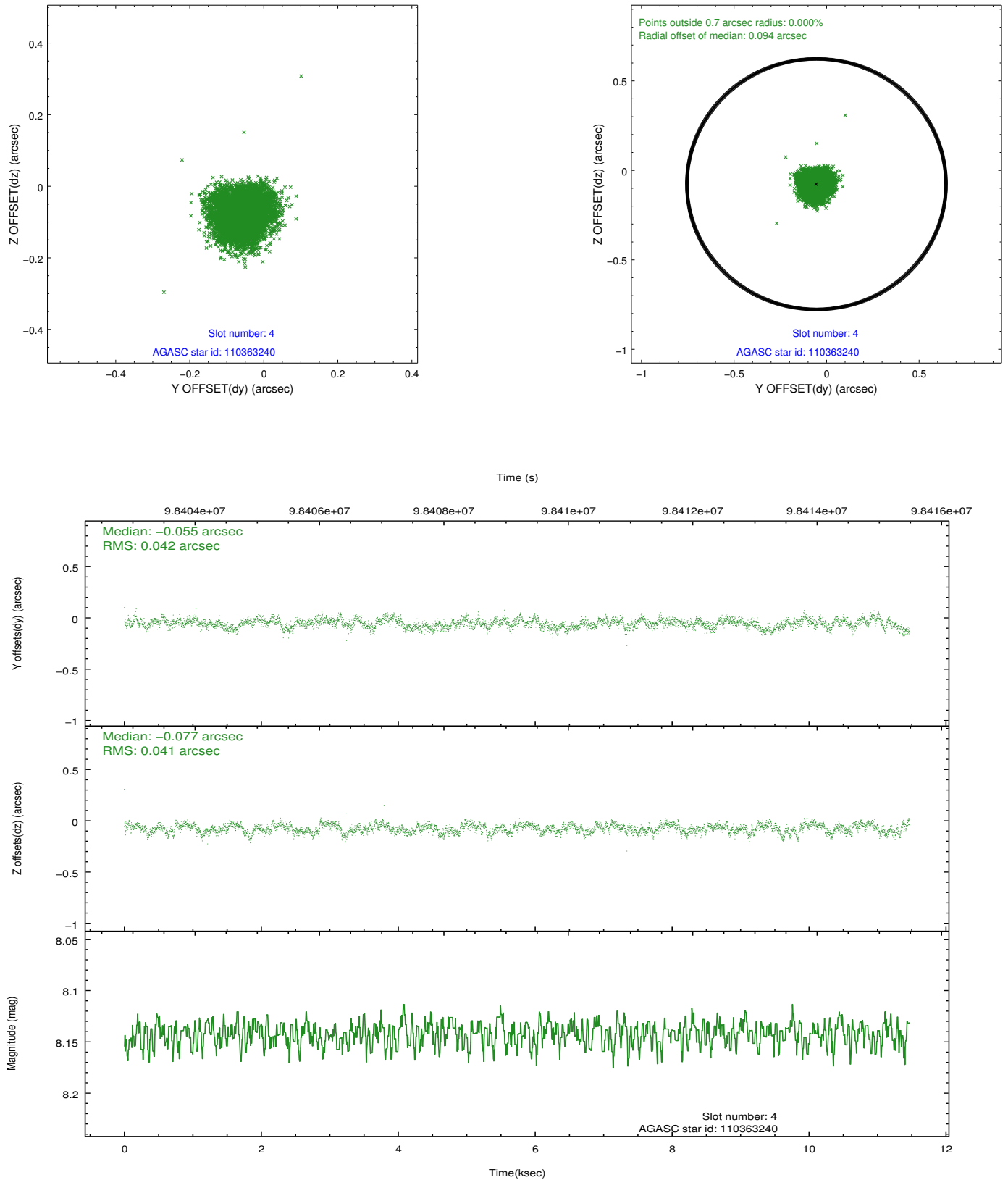


### Slot Statistics

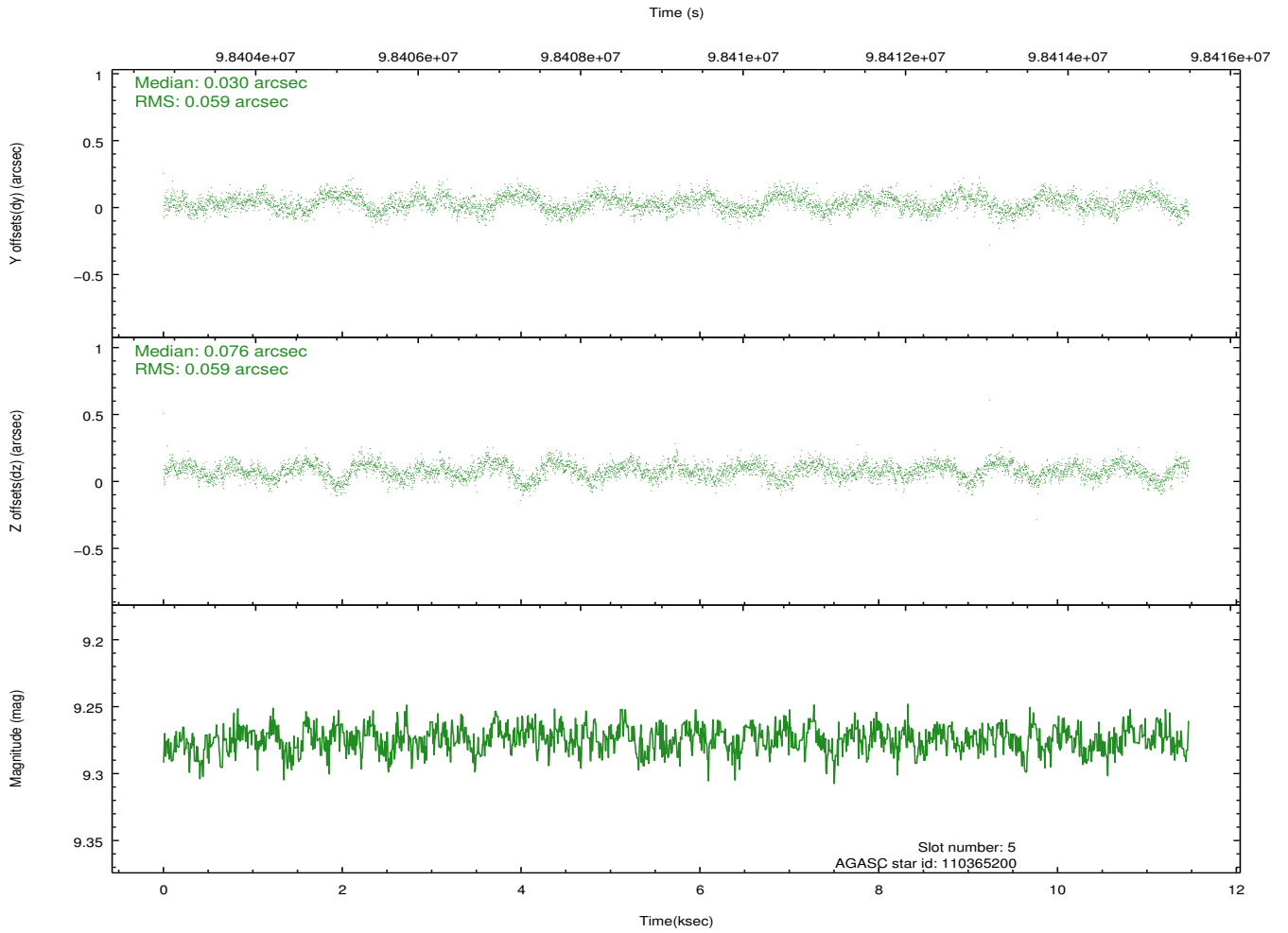
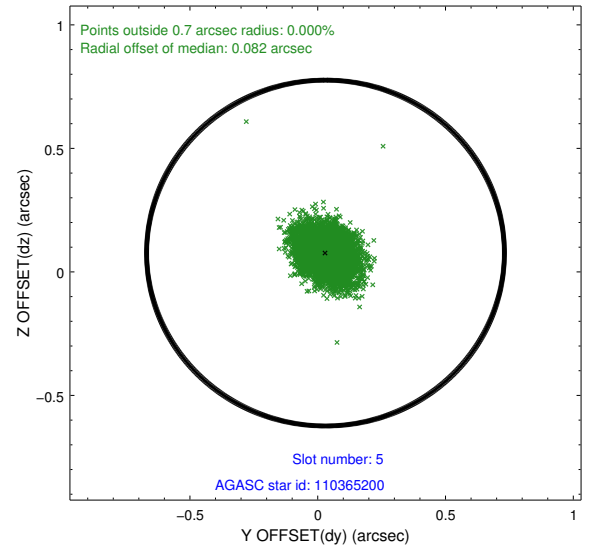
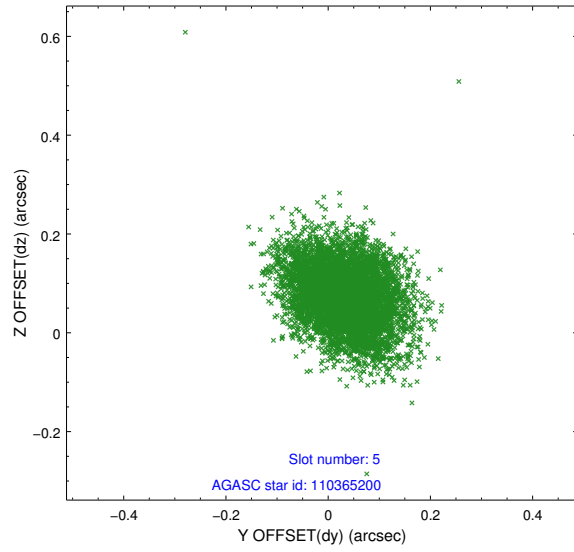
slot	status	id	mag	n_pts	med_dy	med_dz	dr1	dr2	ra	dec	mean_y	mean_z
0	FID	ACIS-S-2	7.12	2798	-0.029	-0.000	0.007	0.011	0.000000	0.000000	-756.57	-1726.78
1	FID	ACIS-S-4	7.20	2797	0.003	0.014	0.006	0.011	0.000000	0.000000	2156.50	181.34
2	FID	ACIS-S-5	7.24	2798	-0.005	-0.005	0.006	0.011	0.000000	0.000000	-1808.86	175.40
3	UNUSED		0.00	0	0.000	0.000	0.000	0.000	0.000000	0.000000	0.00	0.00
4	GUIDE	110363240	8.14	5595	-0.055	-0.077	0.063	0.098	160.564767	12.418075	1370.60	459.93
5	GUIDE	110365200	9.27	5593	0.030	0.076	0.089	0.144	160.778767	12.493533	1629.33	-296.74
6	GUIDE	110363648	7.93	5596	-0.086	-0.053	0.082	0.123	160.155505	12.078678	176.20	1922.30
7	GUIDE	110363112	10.02	5590	0.103	0.051	0.184	0.285	160.492613	11.398369	-2294.95	780.93

## 2.4 Star Slots

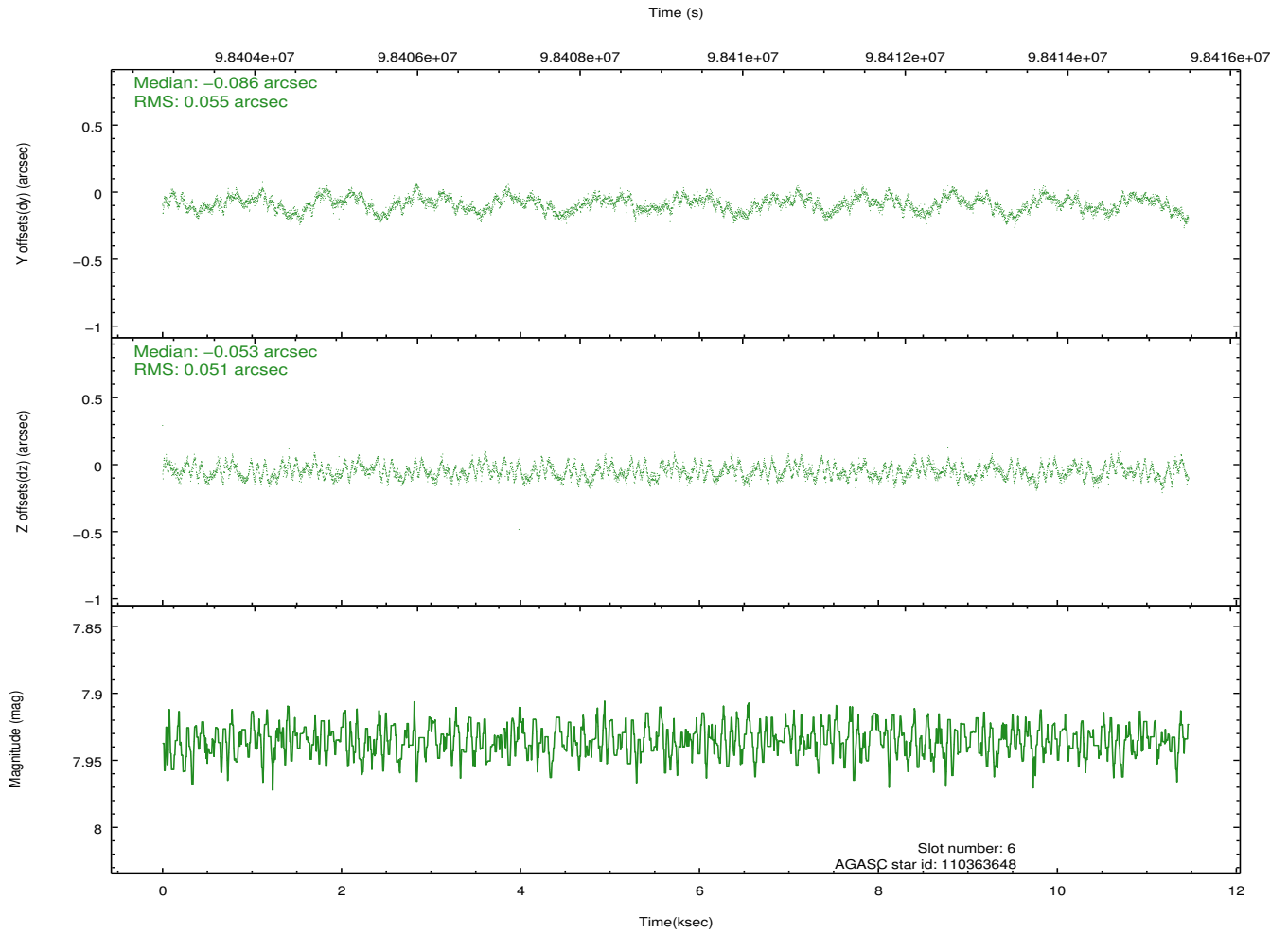
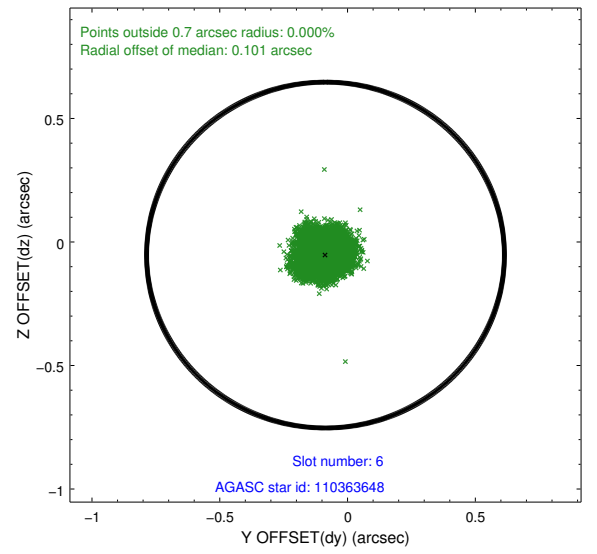
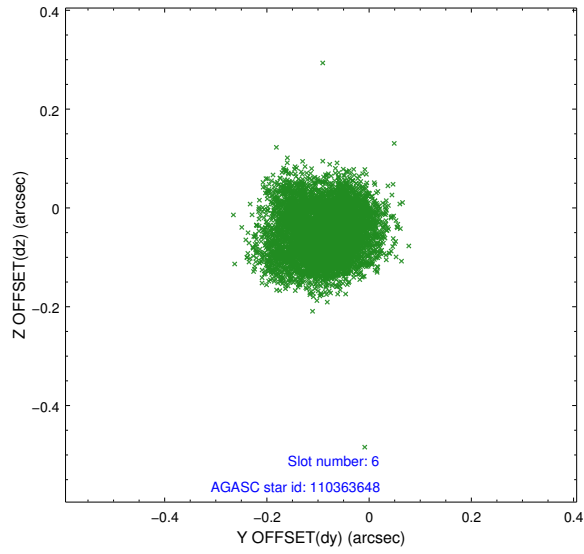
### 2.4.1 Slot 4



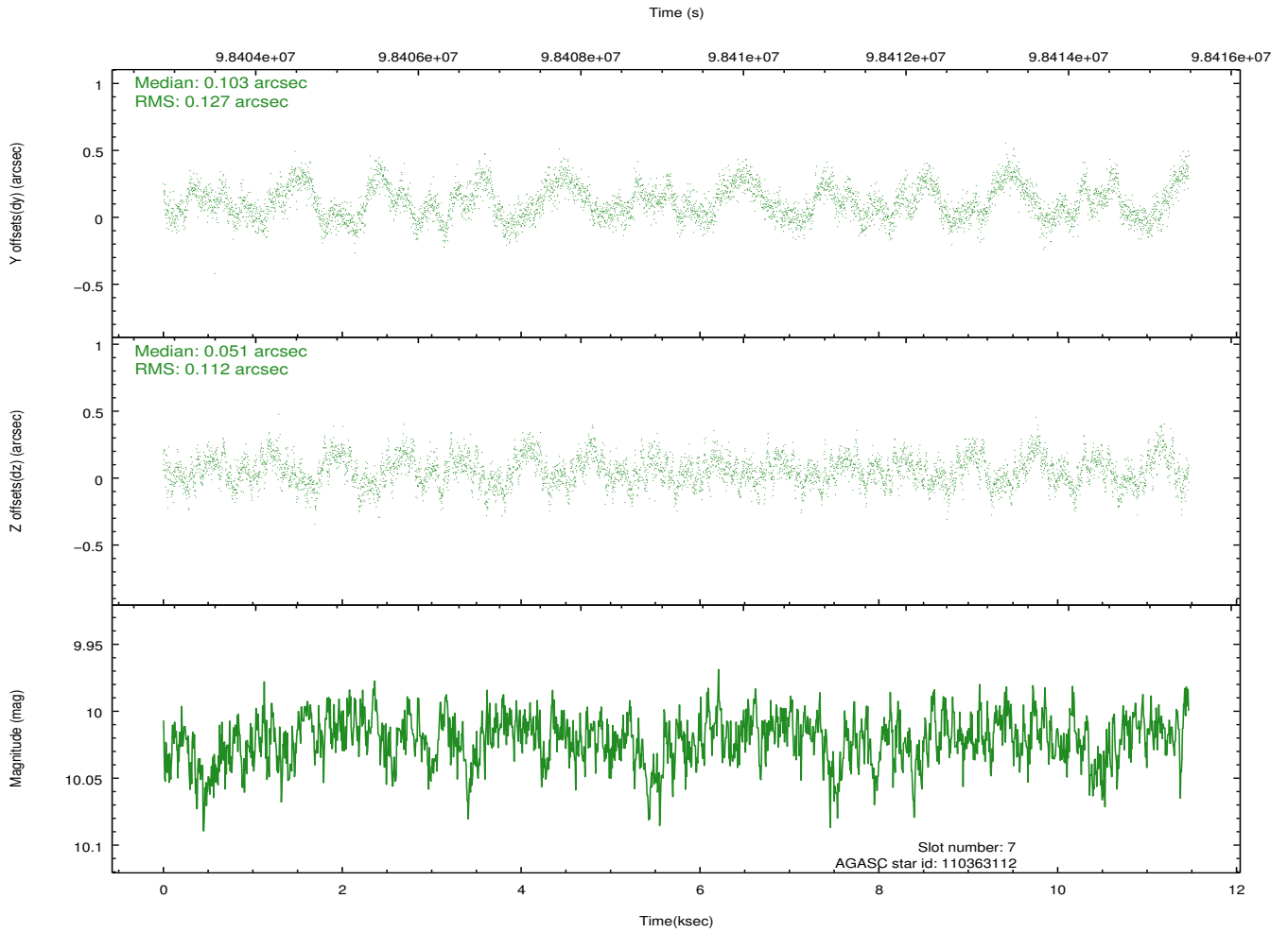
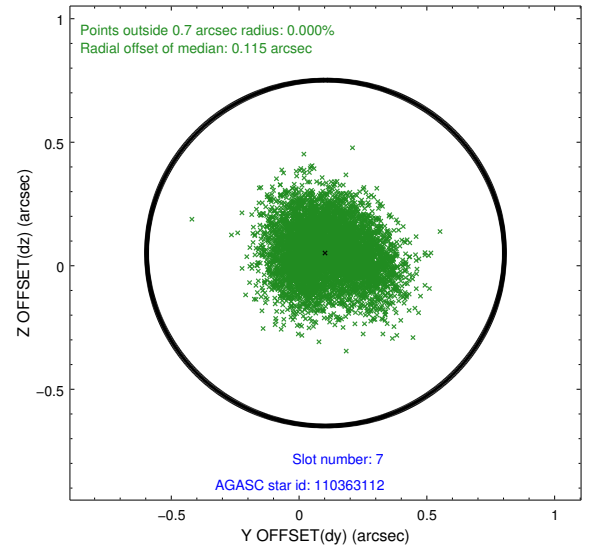
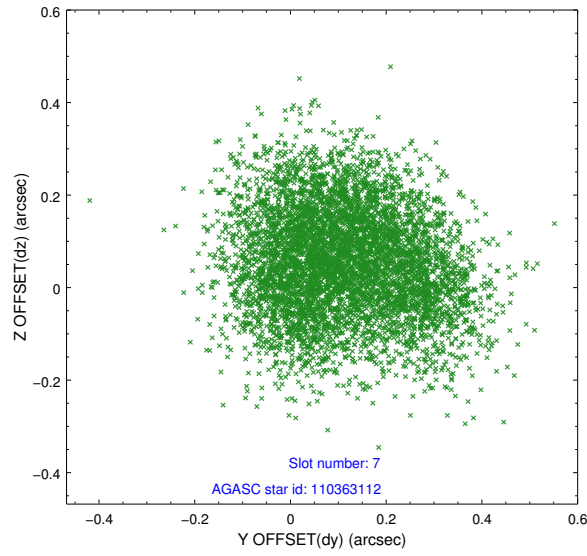
## 2.4.2 Slot 5



### 2.4.3 Slot 6



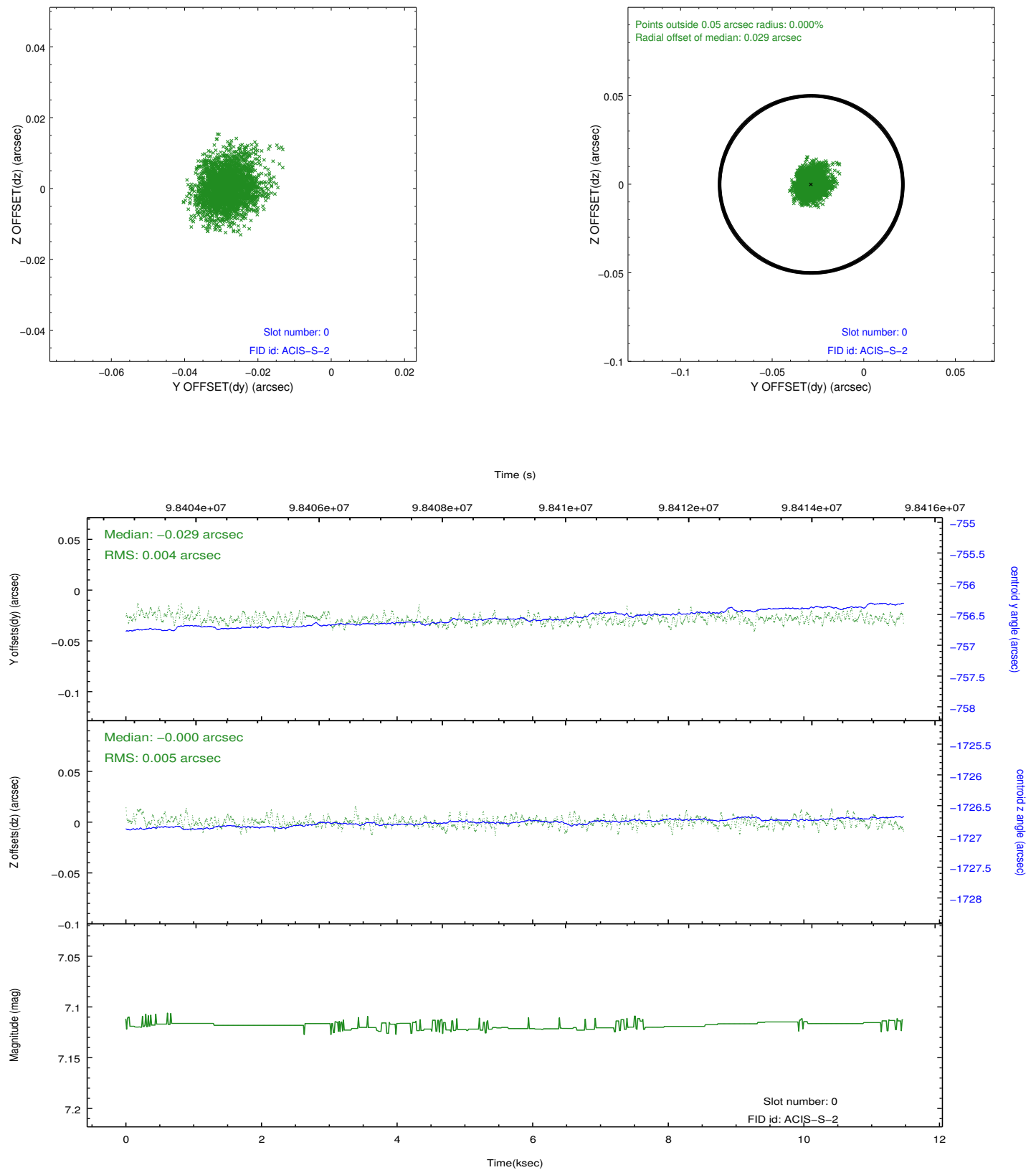
## 2.4.4 Slot 7



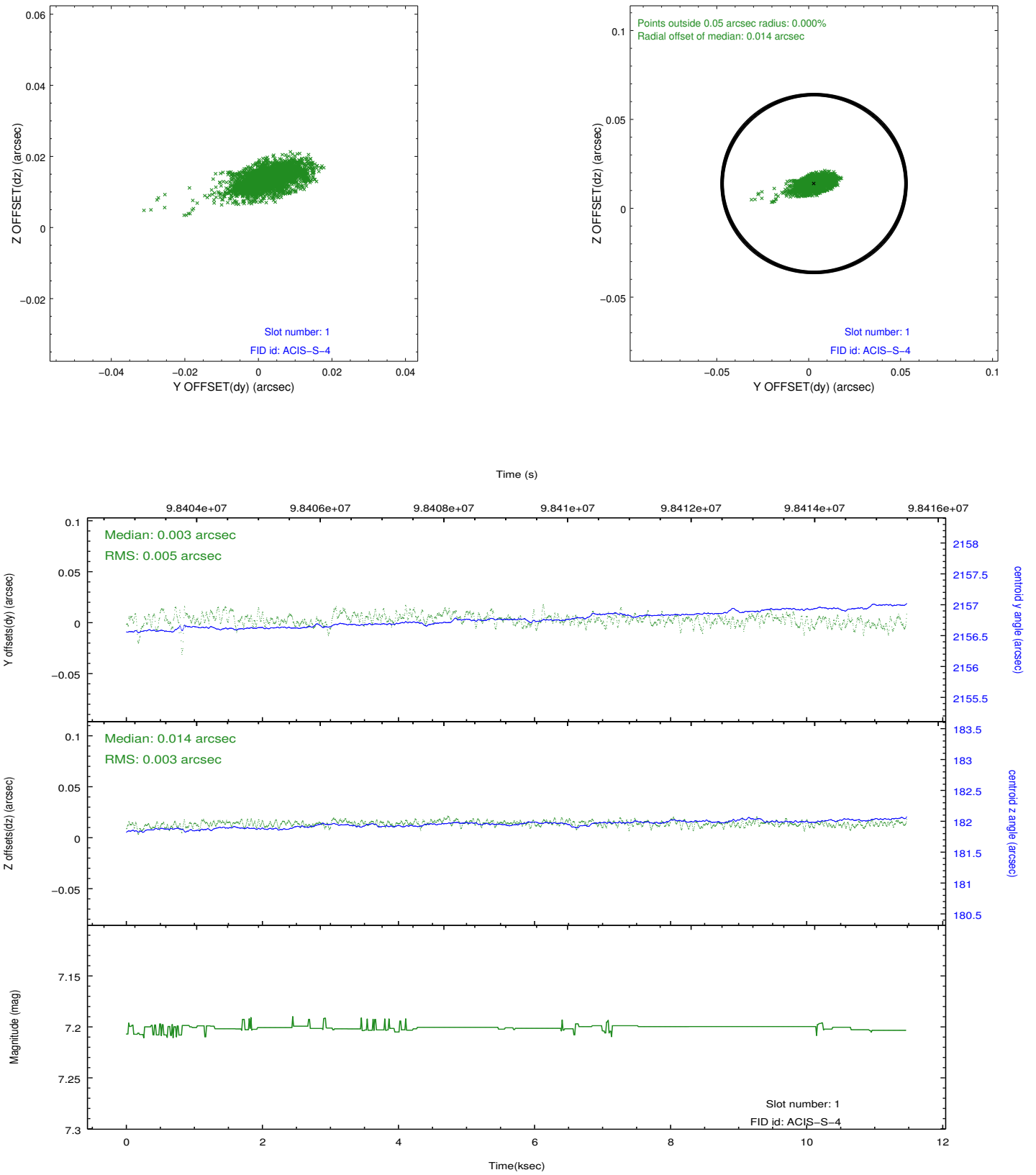


## 2.5 FID Slots

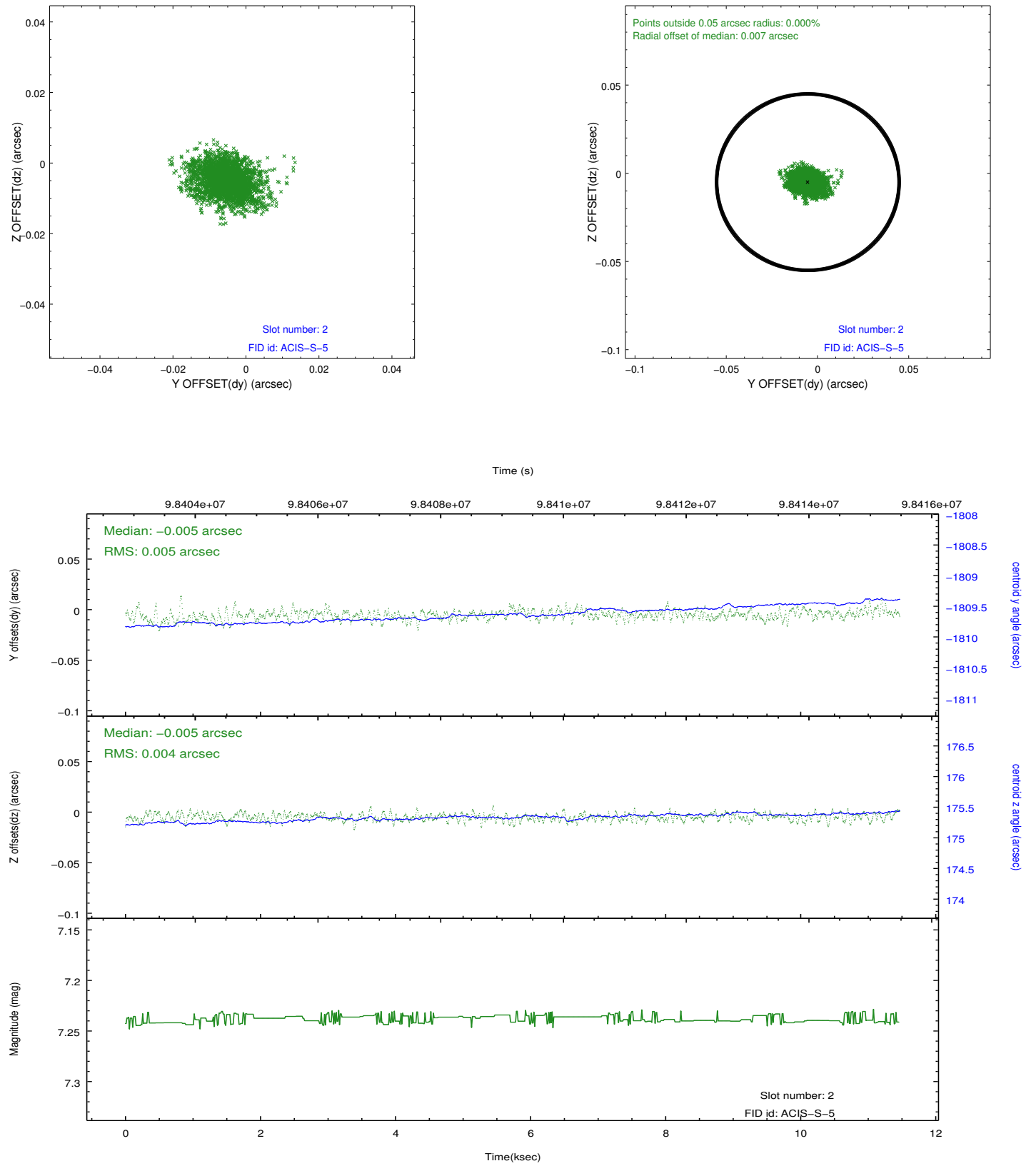
### 2.5.1 Slot 0



## 2.5.2 Slot 1



### 2.5.3 Slot 2



## A Summary

### A.1 Status

V&V Scientist	Jen Lauer
V&V Date (YYYY-MM-DD)	2012.09.19
V&V Edition	1
V&V Disposition and Status	OK
V&V Charge Time	11.469

### A.2 Comments

Roll constraint met.