

V&V Reference Report

L2 ASCDS Version : 8.4.5

Observation 2132 - L2 Version 3
Chandra X-Ray Center

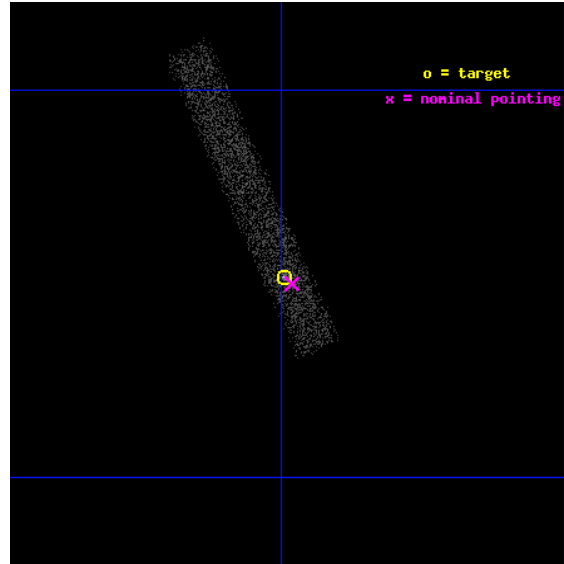
L2 Processing Date : Sep 18 2012

Contents

1	Front	2
2	OBI	3
2.1	OBI	3
2.1.1	Images	3
2.1.2	Bias	3
2.1.3	Parameters	4
2.1.4	Events	4
2.2	Compared Parameters	5
2.3	Aspect	6
2.4	Star Slots	9
2.4.1	Slot 3	9
2.4.2	Slot 4	10
2.4.3	Slot 5	11
2.4.4	Slot 6	12
2.4.5	Slot 7	13
2.5	FID Slots	14
2.5.1	Slot 0	14
2.5.2	Slot 1	15
2.5.3	Slot 2	16
A	Summary	17
A.1	Status	17
A.2	Comments	17

1 Front

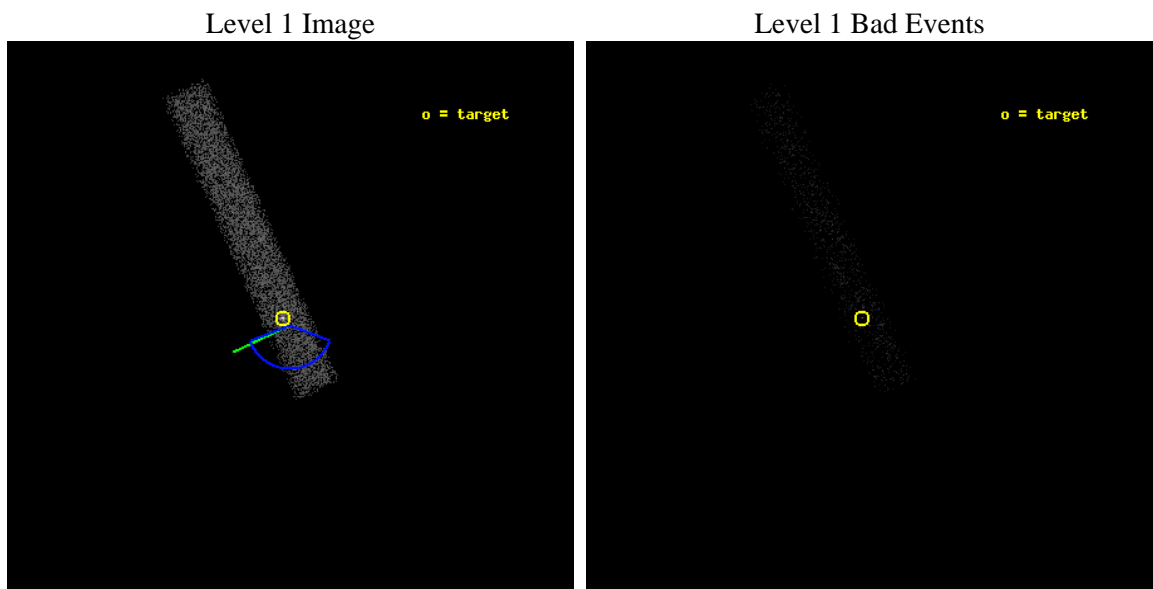
seq_num	700322	Sequence number
obs_id	2132	Observation id
title	AN UNBIASED SURVEY OF X-RAY AND OPTICAL EMISSION FROM EXTENDED RADIO JETS IN AGN	Proposal title
observer	Dr. Rita Sambruna	Principal investigator
object	0605-085	Source name
dtcycle	0	
cycle	P	events from which exps? Prim/Second/Both
ra_targ	91.99875	Observer's specified target RA [deg]
dec_targ	-8.580556	Observer's specified target Dec [deg]
ra_nom	91.995515835322	Nominal RA [deg]
dec_nom	-8.5835642404999	Nominal Dec [deg]
roll_nom	245.86899792891	Nominal Roll [deg]
revision	3	Processing version of data
ontime	9552.0001423359	Sum of GTIs [s]
livetime	8663.1599331906	Livetime [s]
ontime7	9552.0001423359	Sum of GTIs [s]
l2events	5776	Number of level 2 events



2 OBI

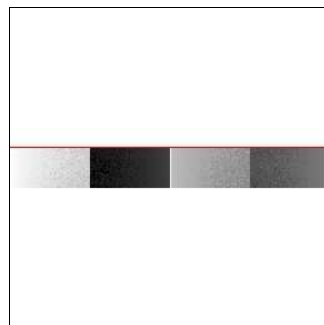
2.1 OBI

2.1.1 Images



2.1.2 Bias

Chip 7



2.1.3 Parameters

obi_num	1	Obi number	sched_exp_time	9400.000000	[s] Scheduled observation exposure time
ascdsver	8.4.5	Processing system revision	ontime	9552.0001423359	Sum of GTIs [s]
caldsver	4.5.1.1	 	ontime7	9552.0001423359	Sum of GTIs [s]
date	2012-09-18T22:26:04	Date and time of file creation	l1events	12246	Number of level 1 events
revision	3	Processing version of data			

2.1.4 Events

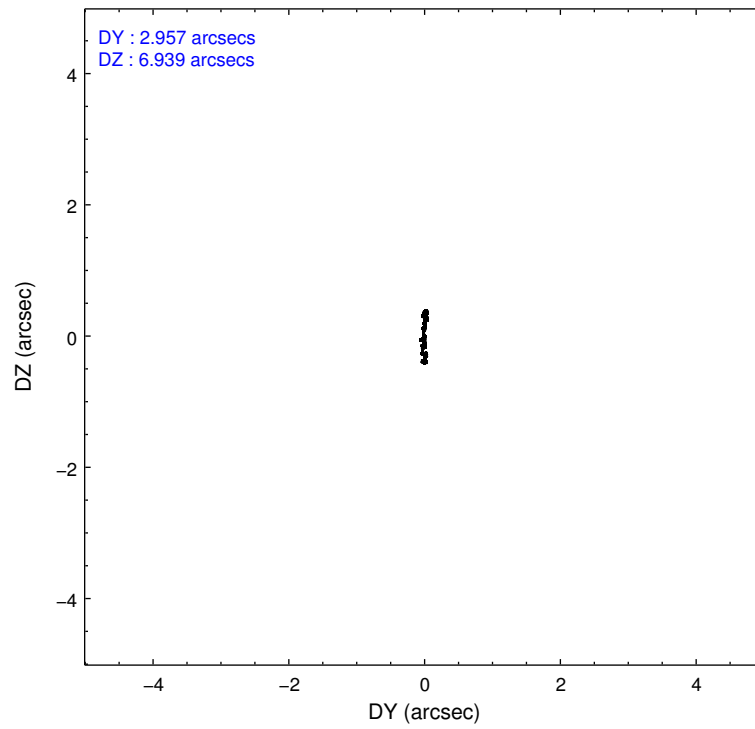
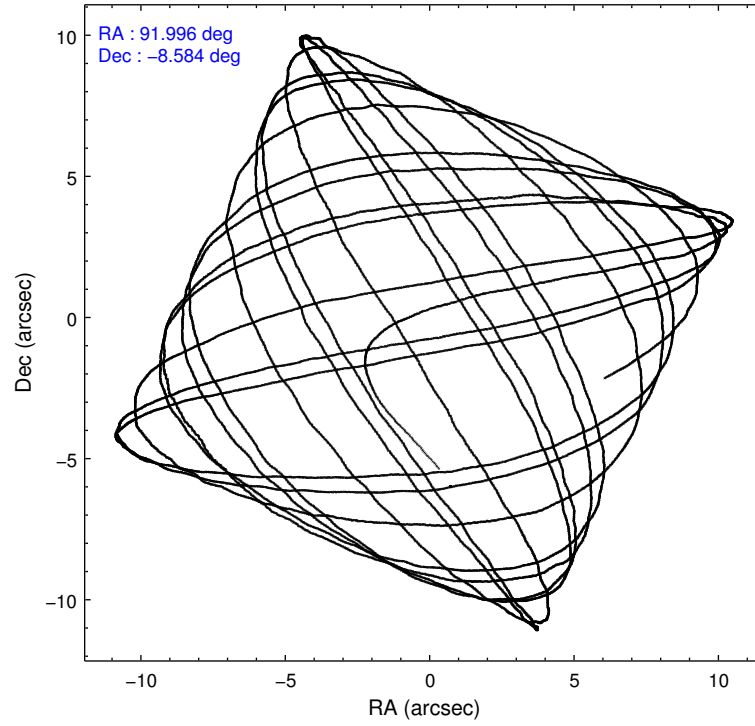
	ccd 7
level 1 events	12246
rejected events	6200
rejected %	50%

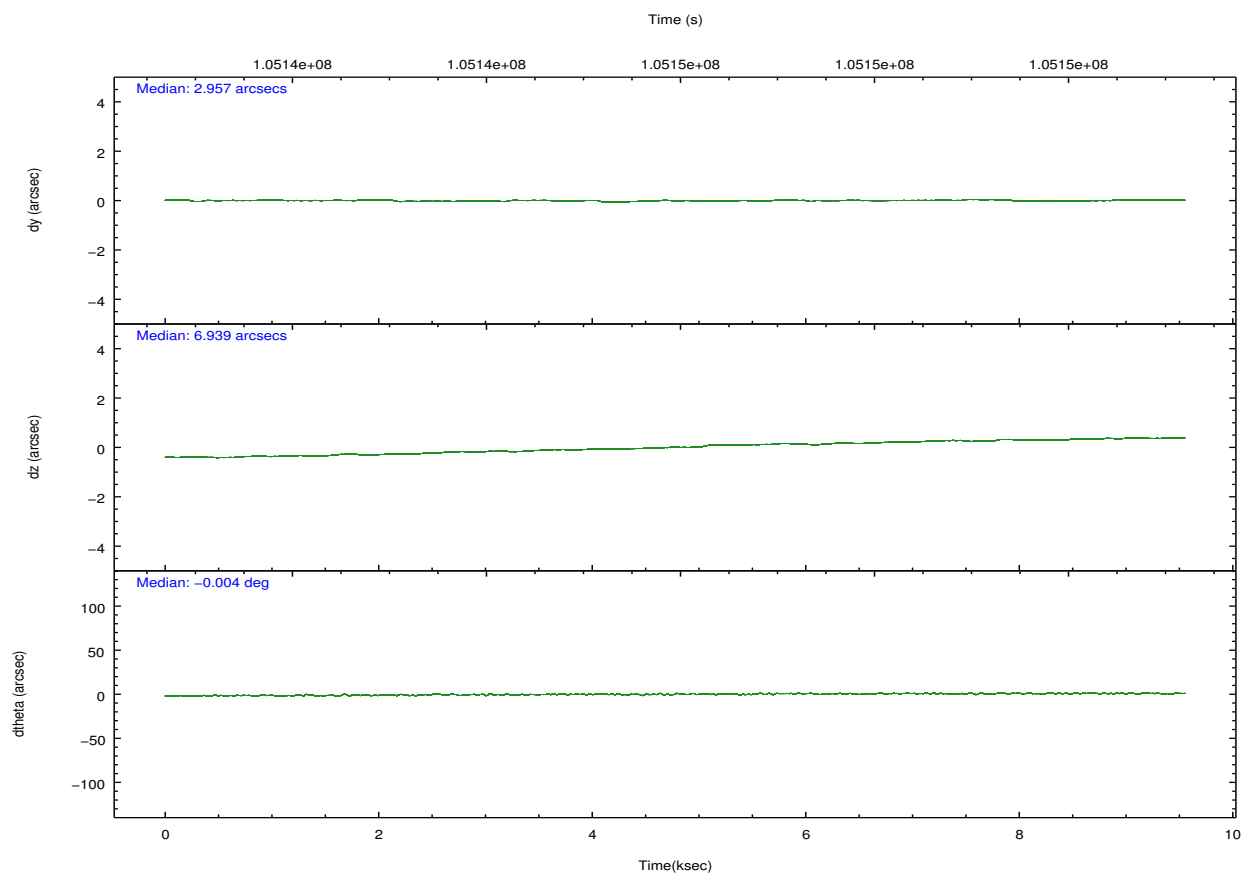
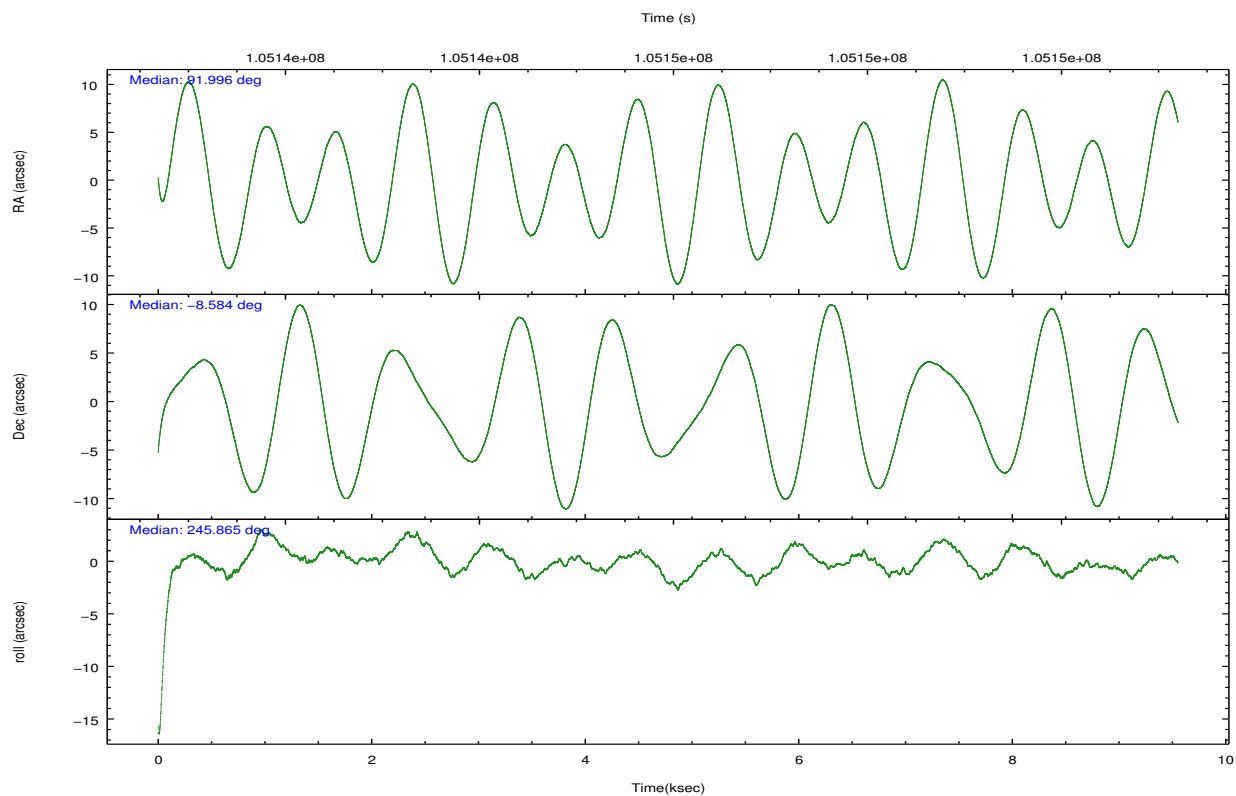
	ccd 7
grade 0 events	929
	7%
grade 1 events	13
	0%
grade 2 events	1298
	10%
grade 3 events	855
	6%
grade 4 events	867
	7%
grade 5 events	993
	8%
grade 6 events	2526
	20%
grade 7 events	4765
	38%

2.2 Compared Parameters

Parameter	Planned	Actual	Parameter	Planned	Actual
Instrument	ACIS	ACIS	Obspar format version number	7	7
Detector	ACIS-7	ACIS-7	Obspar file type	PREDICTED	ACTUAL
Grating	NONE	NONE	Obspar update status	NONE	UPDATED
Data mode	FAINT	FAINT	Number of optional ACIS chips dropped	0	0
Observation mode	POINTING	POINTING	On-chip summing requested	N	N
[deg] Pointing RA	91.992356	91.99551583532227	Subarray requested	CUSTOM	1/8
[deg] Pointing Dec	-8.556494	-8.583564240499946	Subarray start row	449	449
[deg] Pointing Roll	245.711918	245.8689979289055	Subarray row count	128	128
[deg] Roll angle	180.000000	180.000000	Alternating exposures requested	N	N
[deg] Roll tolerance	69.000000	69.000000	[s] Primary exposure time	0.000000	0.4
Roll constraint allows 180D rotation	N	N			
[mm] SIM focus pos	-0.684267	-0.6828225247311905			
[mm] SIM defocus	0	0.001444936568705701			
[mm] SIM translation stage pos	-190.132523	-190.1400660498719			
[mm] SIM translation stage offset	0	0.00754346686406393			
[s] Observation start time (MET)	105141319.184000	105140275.55451			
Observation start date	2001-05-01T21:54:15	2001-05-01T21:37:55			
[s] Observation end time (MET)	105150719.184000	105151784.76746			
Observation end date	2001-05-02T00:30:55	2001-05-02T00:49:44			
Read mode	TIMED	TIMED			

2.3 Aspect



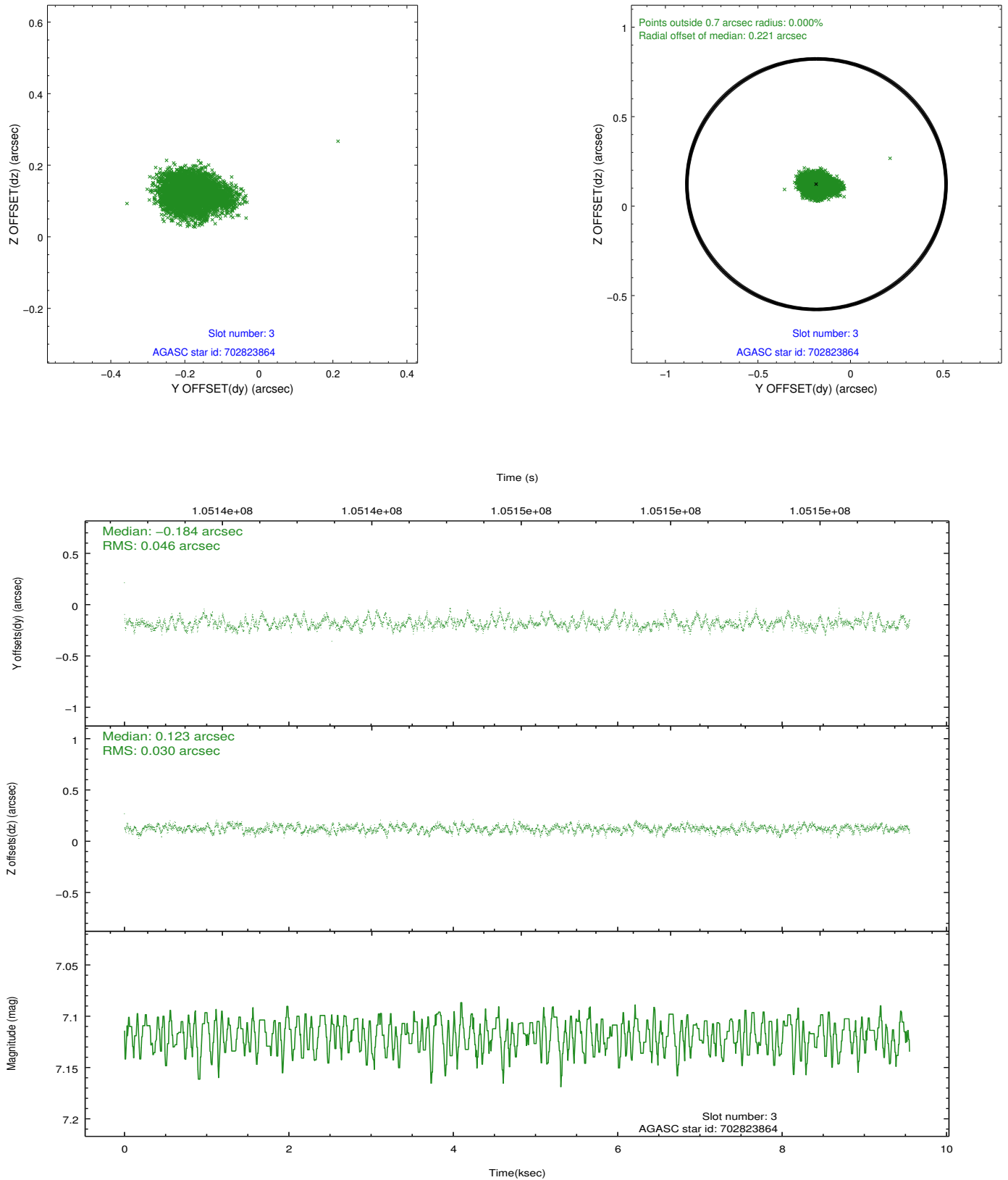


Slot Statistics

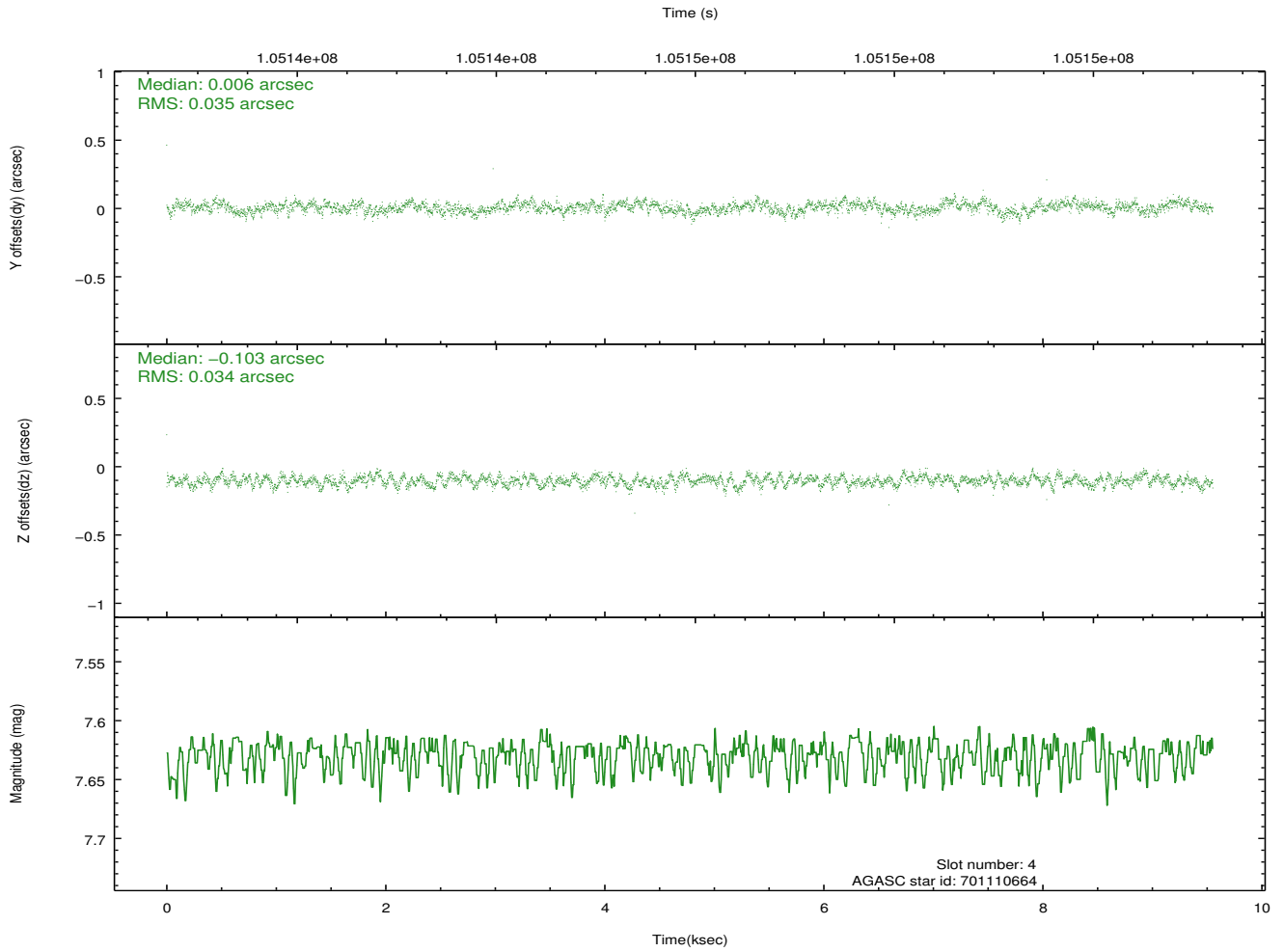
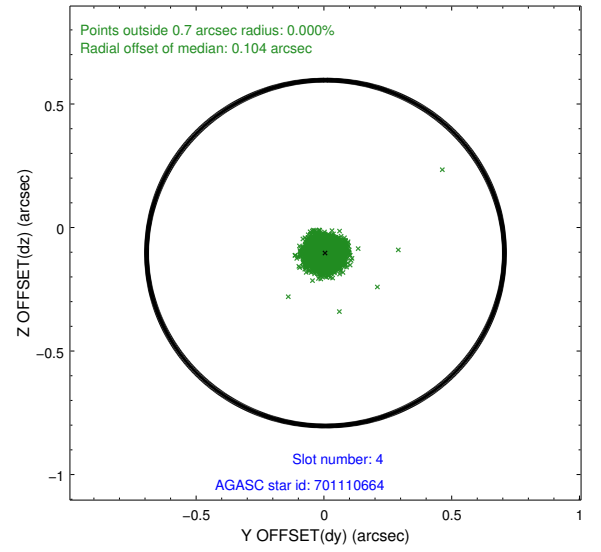
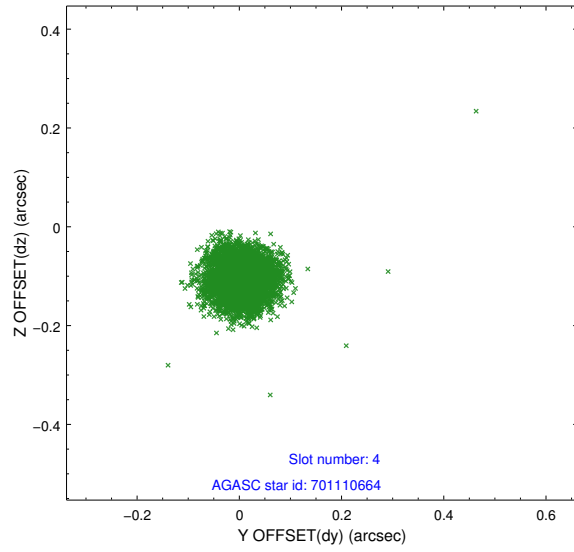
slot	status	id	mag	n_pts	med_dy	med_dz	dr1	dr2	ra	dec	mean_y	mean_z
0	FID	ACIS-S-1	7.19	2330	0.019	-0.052	0.009	0.013	0.000000	0.000000	940.43	-1723.80
1	FID	ACIS-S-5	7.24	2330	0.008	0.025	0.009	0.014	0.000000	0.000000	-1808.23	173.31
2	FID	ACIS-S-6	7.35	2330	-0.048	0.040	0.012	0.020	0.000000	0.000000	405.36	817.87
3	GUIDE	702823864	7.12	4661	-0.184	0.123	0.058	0.095	92.190386	-7.936361	-2325.20	-274.81
4	GUIDE	701110664	7.63	4661	0.006	-0.103	0.051	0.079	91.584158	-8.350270	-78.24	-1630.62
5	GUIDE	701117360	8.26	4661	-0.010	-0.134	0.058	0.093	91.761463	-8.253958	-654.01	-1198.36
6	GUIDE	702822352	8.07	4661	0.039	0.091	0.060	0.098	92.326569	-9.127061	1384.01	1927.64
7	GUIDE	701115312	9.04	4658	0.150	0.025	0.071	0.116	91.551680	-8.877721	1700.28	-952.22

2.4 Star Slots

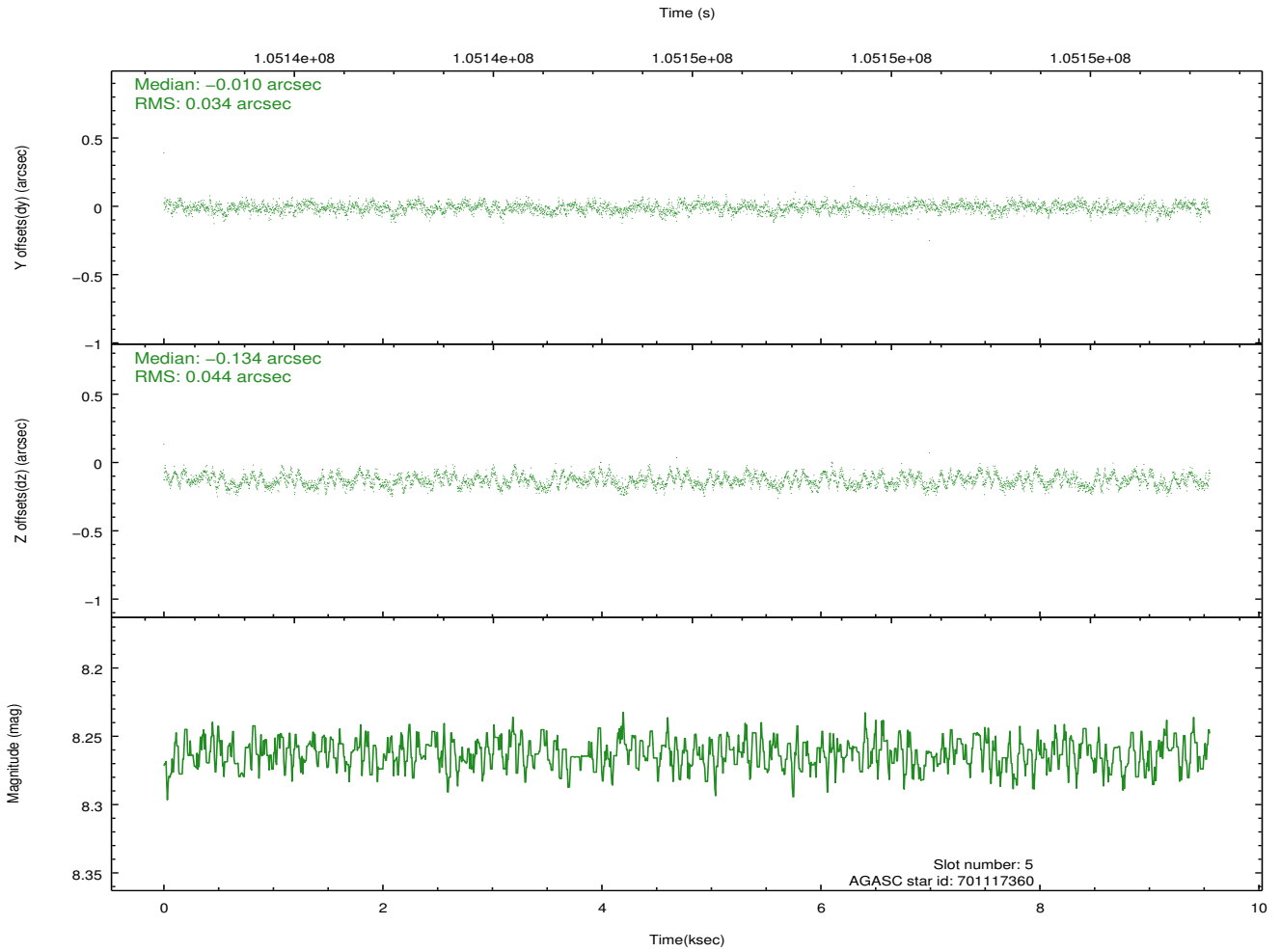
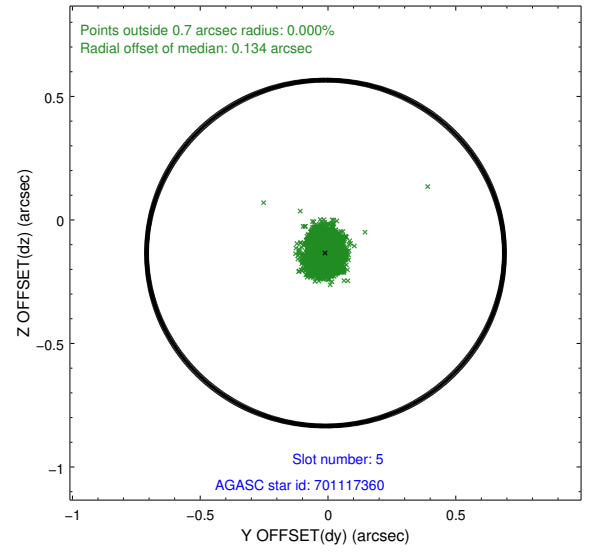
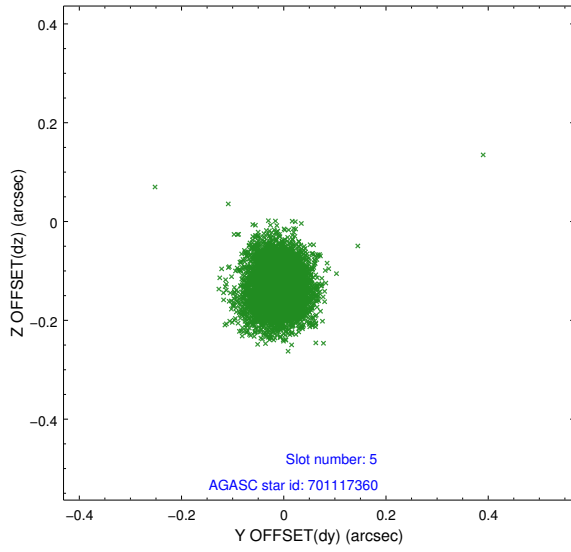
2.4.1 Slot 3



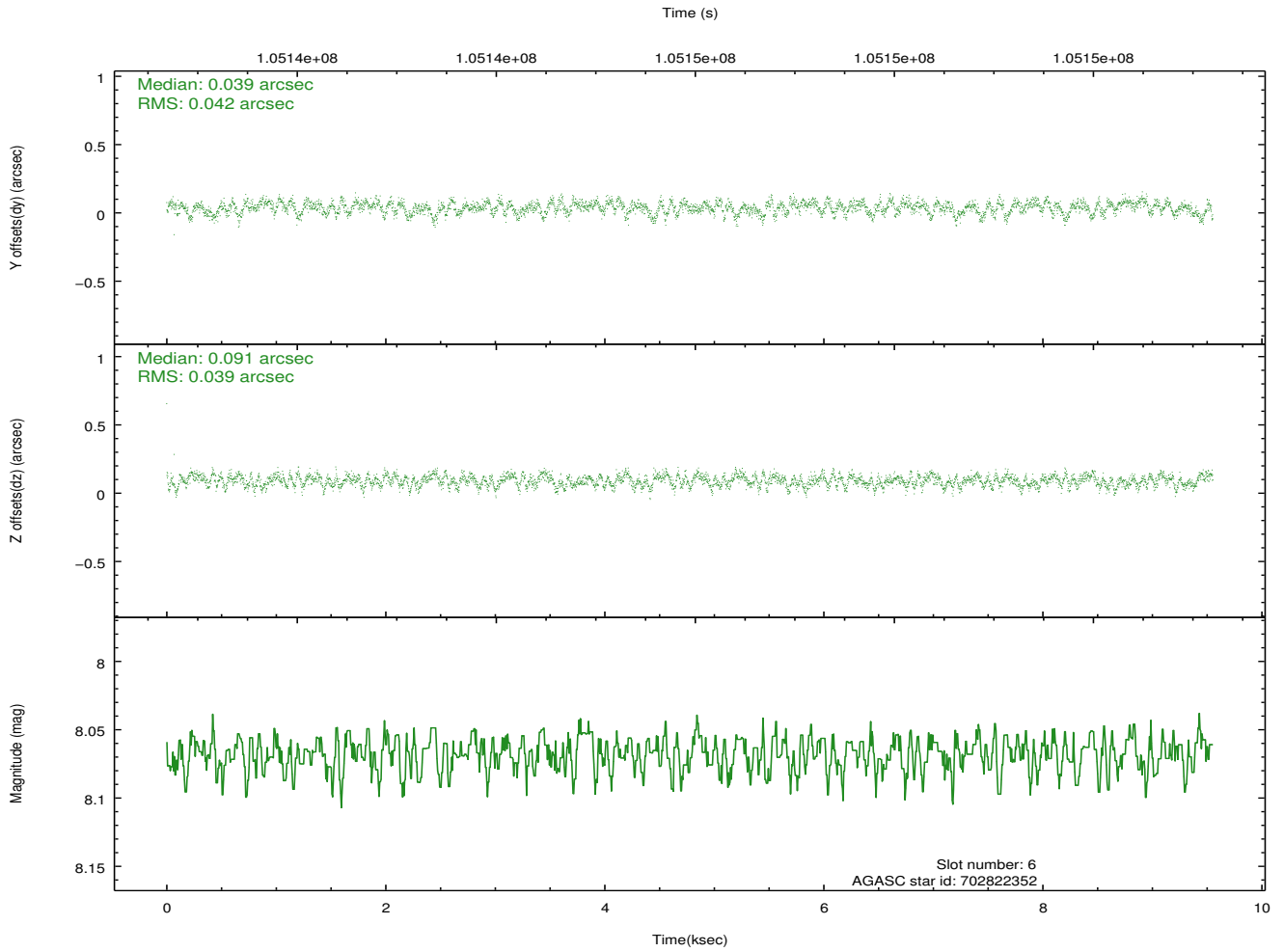
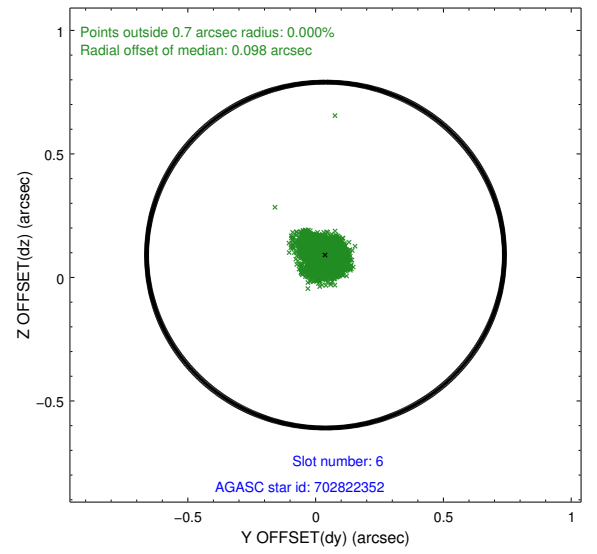
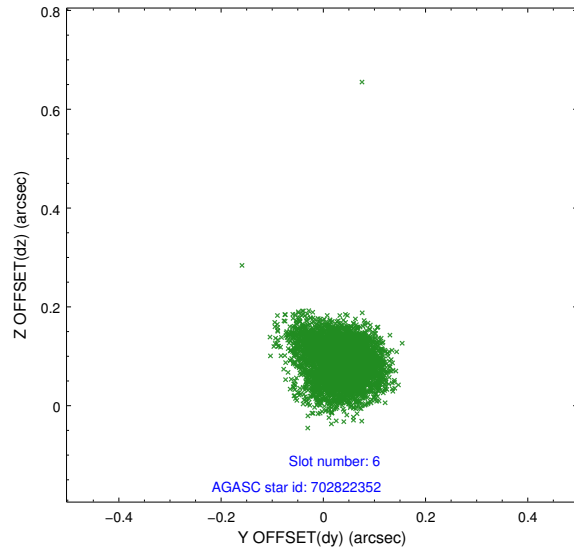
2.4.2 Slot 4



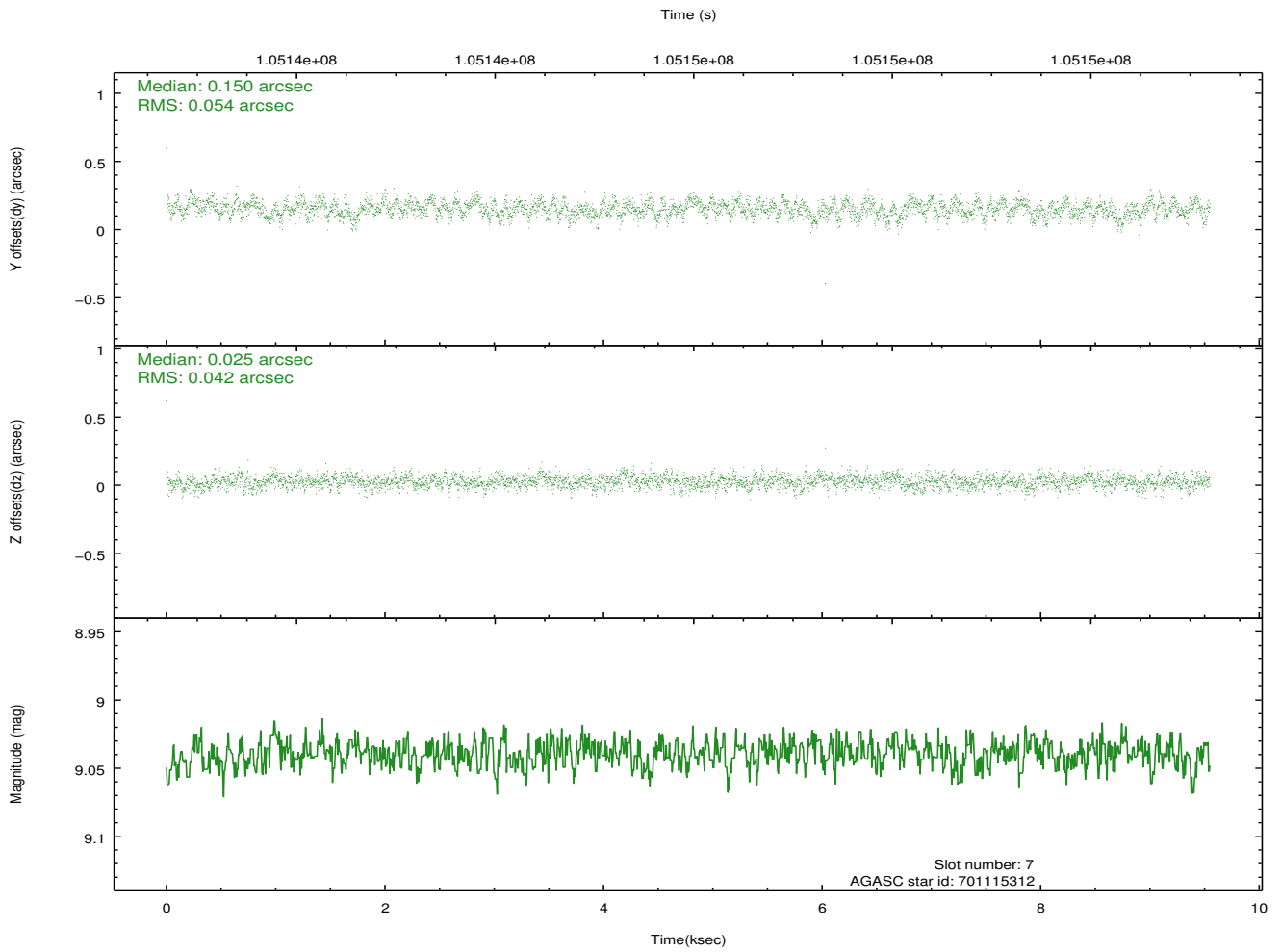
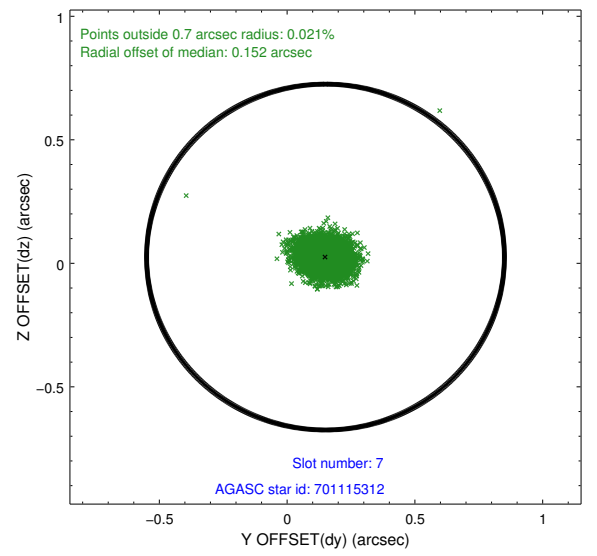
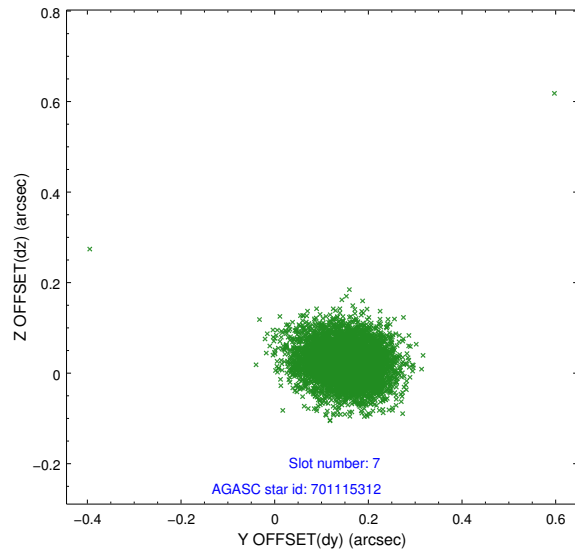
2.4.3 Slot 5



2.4.4 Slot 6

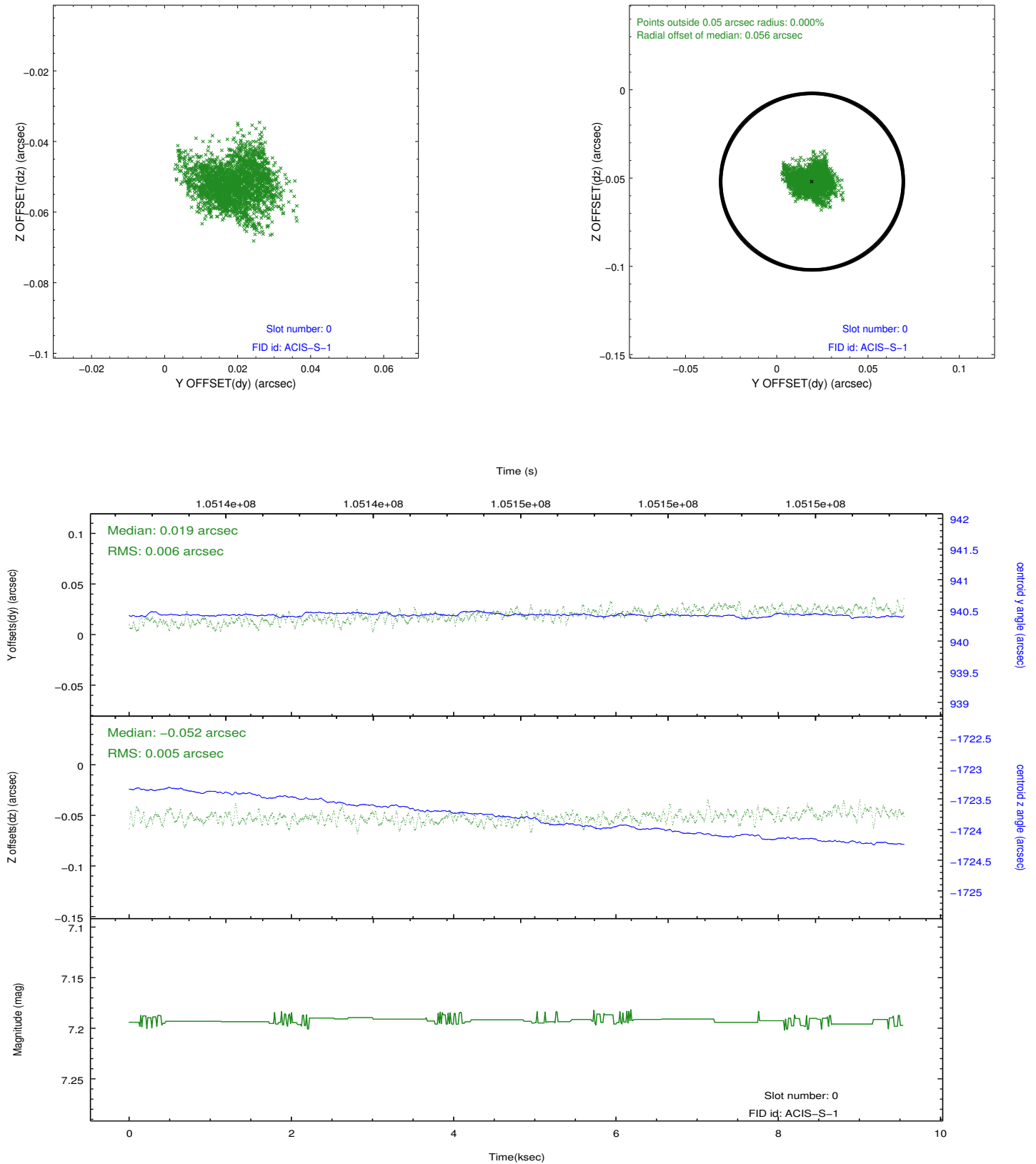


2.4.5 Slot 7

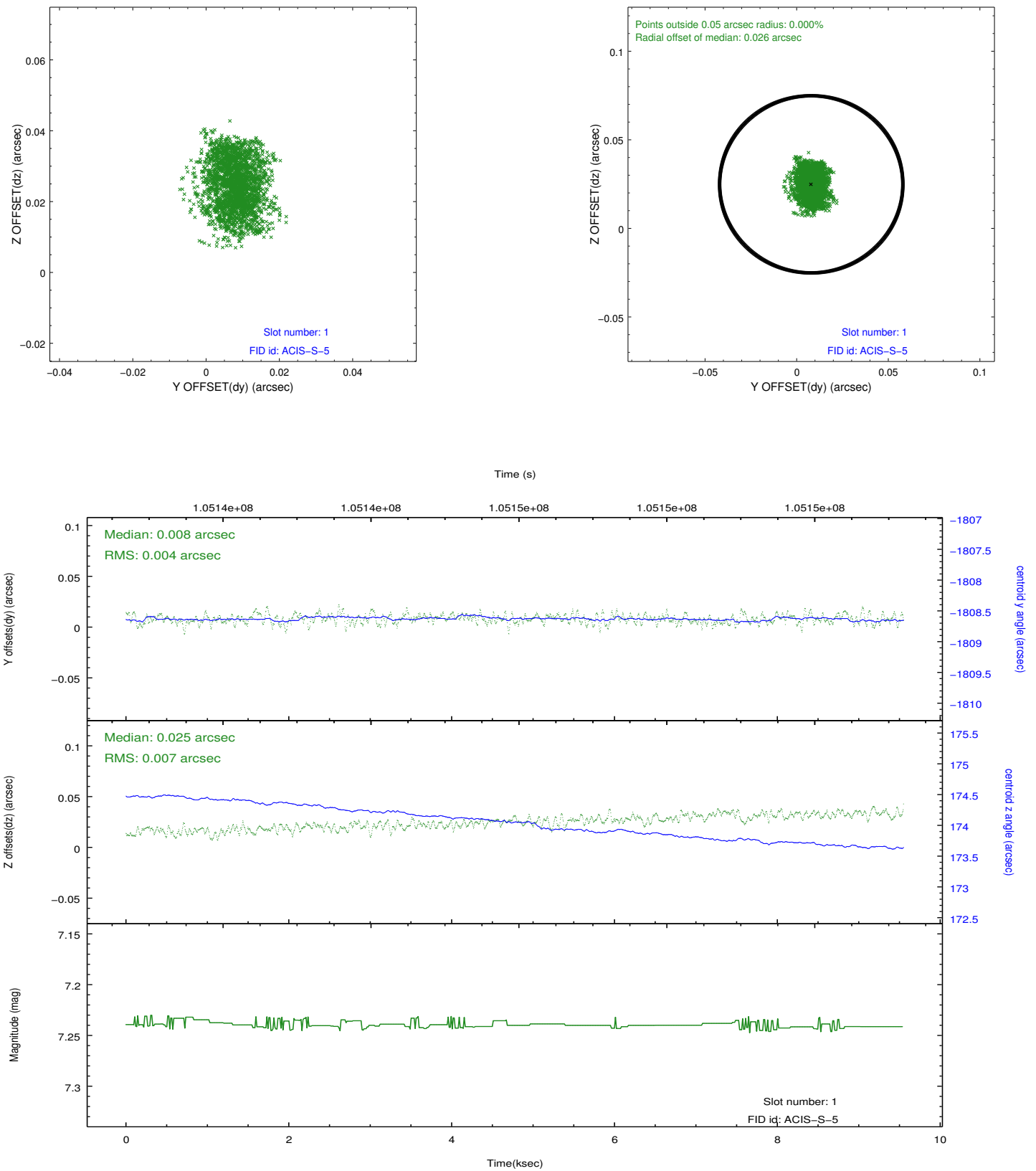


2.5 FID Slots

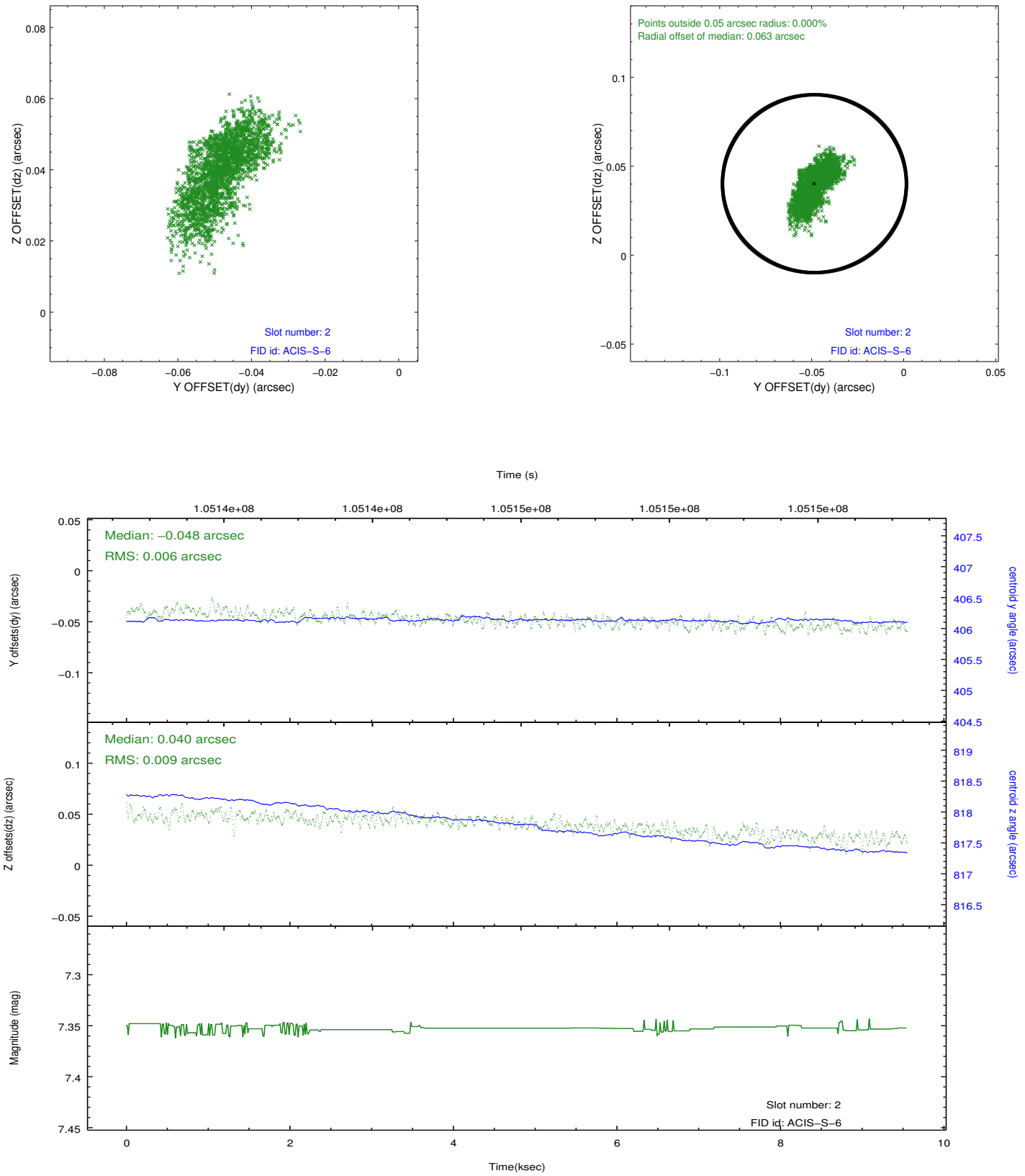
2.5.1 Slot 0



2.5.2 Slot 1



2.5.3 Slot 2



A Summary

A.1 Status

V&V Scientist	Jen Lauer
V&V Date (YYYY-MM-DD)	2012.09.20
V&V Edition	1
V&V Disposition and Status	OK
V&V Charge Time	9.552

A.2 Comments

Roll constraint met.