

V&V Reference Report

L2 ASCDS Version : 7.6.9

Observation 2111 - L2 Version 001
Chandra X-Ray Center

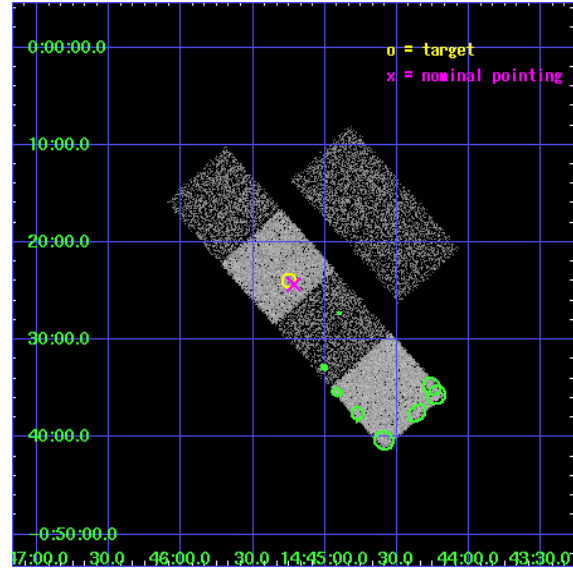
L2 Processing Date : Nov 23 2006

Contents

1	Front	2
2	OBI	3
2.1	OBI	3
2.1.1	Images	3
2.1.2	Bias	3
2.1.3	Parameters	4
2.1.4	Events	4
2.2	Compared Parameters	5
2.3	Aspect	6
2.4	Star Slots	9
2.4.1	Slot 3	9
2.4.2	Slot 4	10
2.4.3	Slot 5	11
2.4.4	Slot 6	12
2.4.5	Slot 7	13
2.5	FID Slots	14
2.5.1	Slot 0	14
2.5.2	Slot 1	15
2.5.3	Slot 2	16
3	Point Sources	17
A	Summary	18
A.1	Status	18
A.2	Comments	18

1 Front

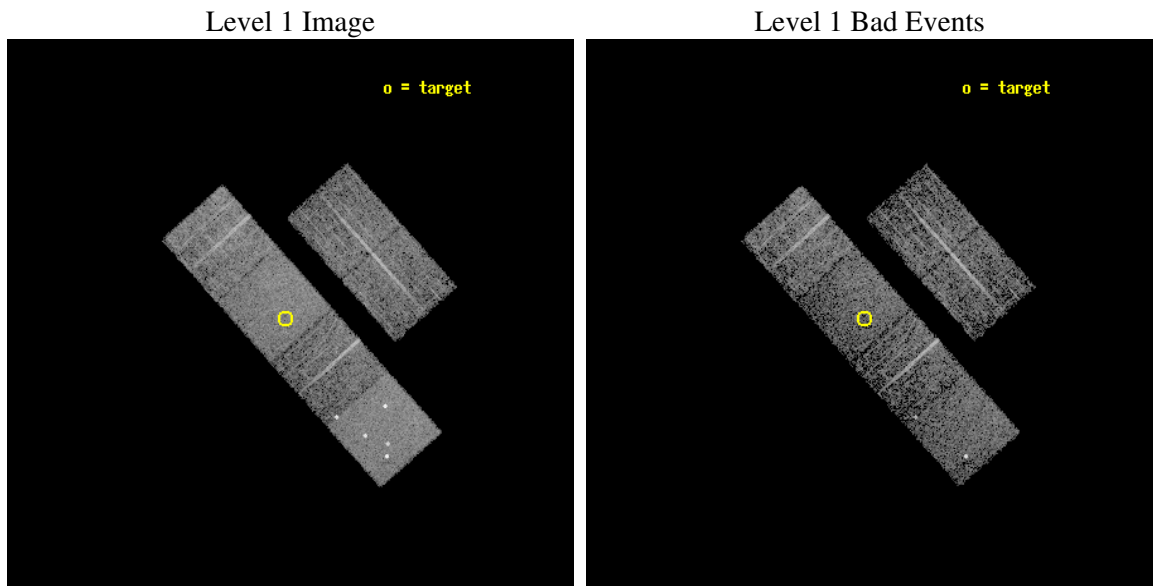
seq_num	700301
obs_id	2111
title	PUBLIC OBSERVATIONS OF A WELL-DEFINED SAMPLE OF BAL QSOS FROM THE LARGE BRIGHT QUASAR SURVEY: REMOVING THE BARRIERS
observer	Prof. William Brandt
object	LBQS 1442-0011
dtcycle	0
cycle	P
ra_targ	221.311667
dec_targ	-0.399611
ra_nom	221.30406584309
dec_nom	-0.40561686508406
roll_nom	228.12337026146
revision	2
ontime	4332.8000040352
livetime	4277.9354814852
ontime2	4332.8000040352
ontime3	4332.8000040352
ontime5	4332.8000040352
ontime6	4332.8000040352
ontime7	4332.8000040352
ontime8	4329.5590637028
l2events	39409



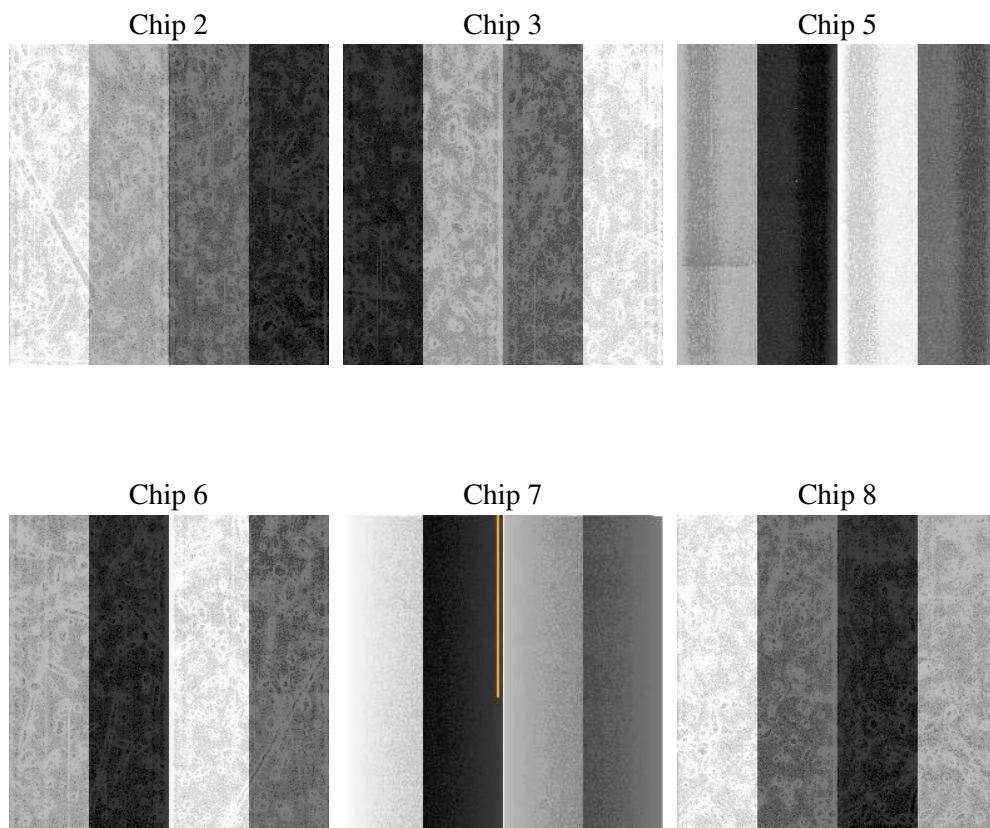
2 OBI

2.1 OBI

2.1.1 Images



2.1.2 Bias



2.1.3 Parameters

obi_num	0
ascdsver	7.6.9
caldsver	3.2.4
date	2006-11-23T05:31:36
revision	2

sched_exp_time	4573.520000
ontime	4336.4566586912
ontime2	4336.4566586912
ontime3	4336.4566586912
ontime5	4336.4566586912
ontime6	4336.4566586912
ontime7	4336.4566586912
ontime8	4333.2155887634
l1events	191155

2.1.4 Events

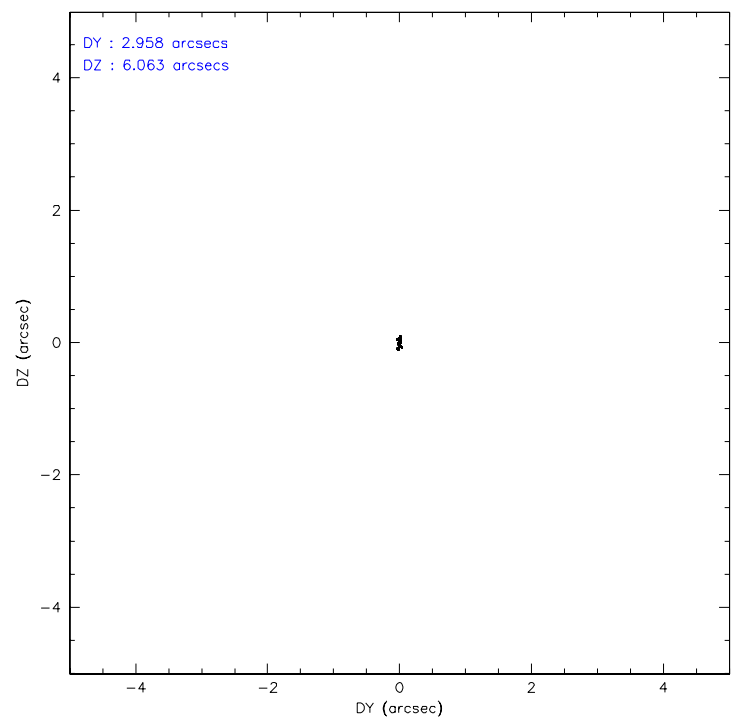
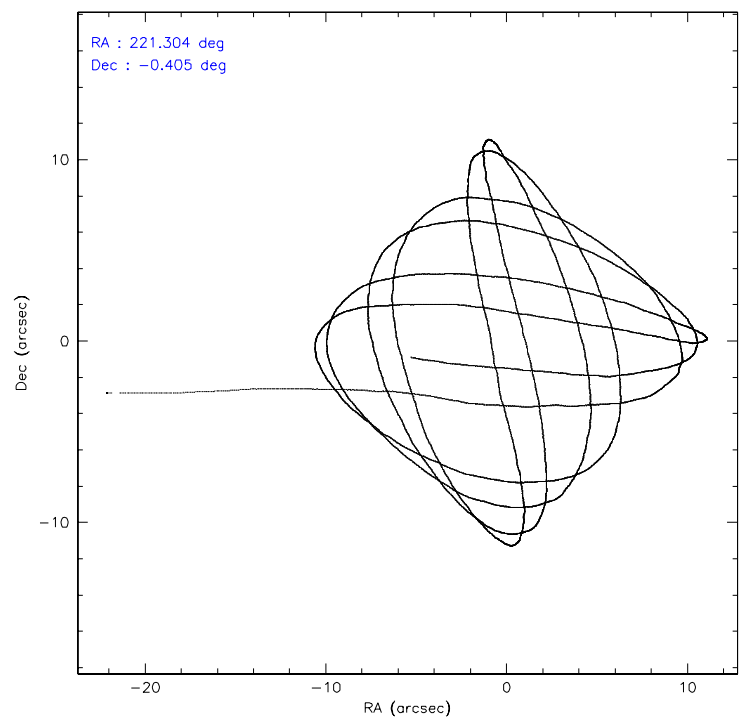
	ccd 2	ccd 3	ccd 5	ccd 6	ccd 7	ccd 8
level 1 events	26424	26072	41561	25477	34765	36856
rejected events	23458	23023	22284	22335	21460	30410
rejected %	88%	88%	53%	87%	61%	82%

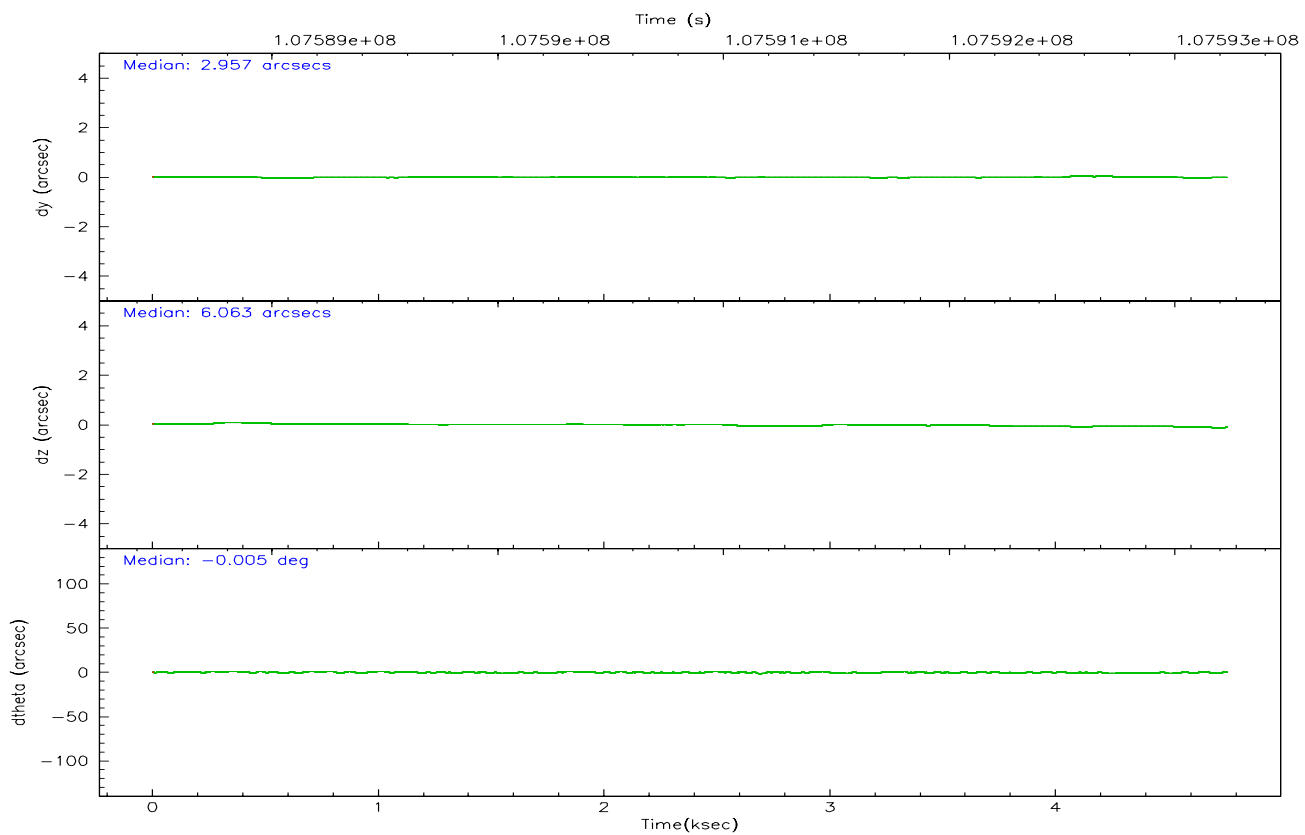
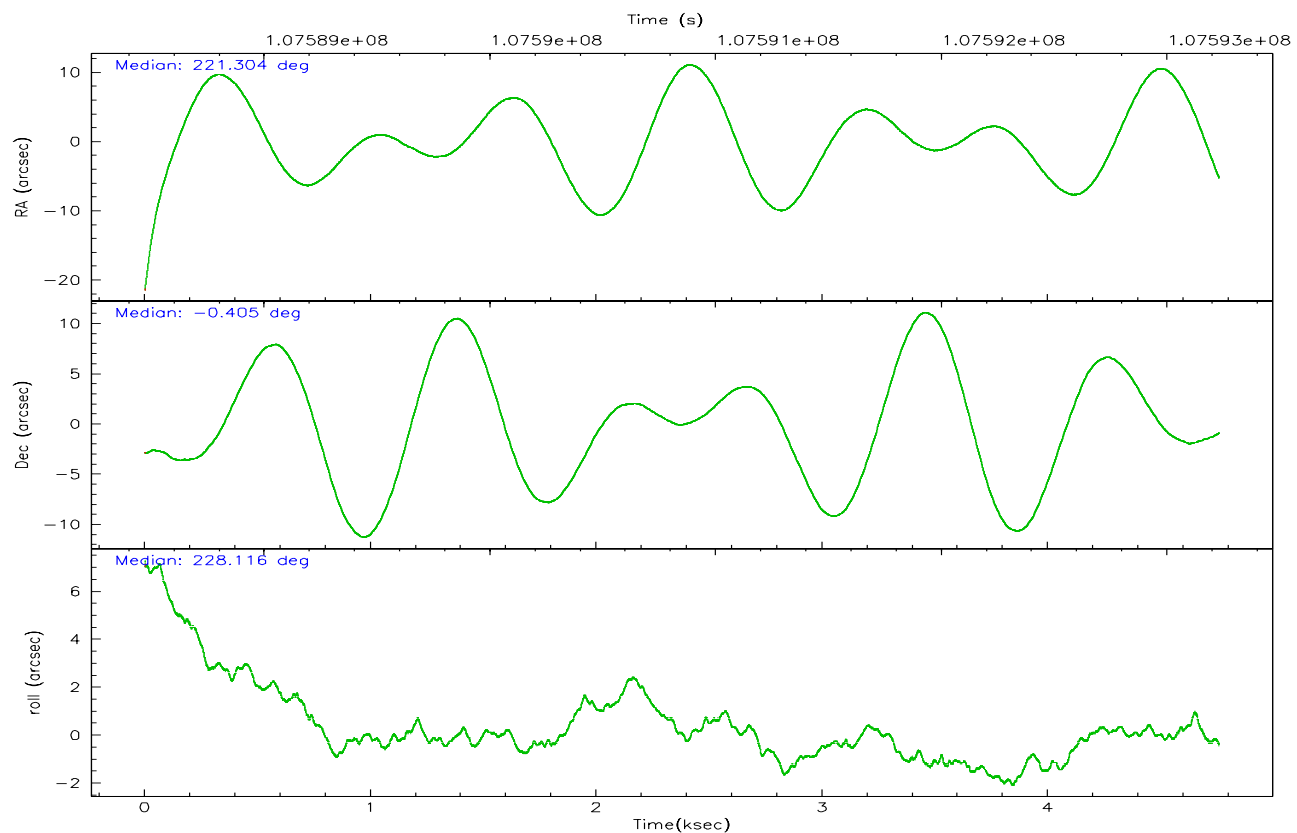
	ccd 2	ccd 3	ccd 5	ccd 6	ccd 7	ccd 8
grade 0 events	1363	1370	3473	1340	902	1973
	5%	5%	8%	5%	2%	5%
grade 1 events	10	11	116	14	22	19
	0%	0%	0%	0%	0%	0%
grade 2 events	609	569	5541	614	3307	1418
	2%	2%	13%	2%	9%	3%
grade 3 events	261	306	440	327	690	685
	0%	1%	1%	1%	1%	1%
grade 4 events	242	276	374	273	702	623
	0%	1%	0%	1%	2%	1%
grade 5 events	920	993	2370	1093	2418	1457
	3%	3%	5%	4%	6%	3%
grade 6 events	497	530	9460	590	7715	1751
	1%	2%	22%	2%	22%	4%
grade 7 events	22522	22017	19787	21226	19009	28930
	85%	84%	47%	83%	54%	78%

2.2 Compared Parameters

Parameter	Planned	Actual	Parameter	Planned	Actual
Instrument	ACIS	ACIS	Obspar format version number	6	6
Detector	ACIS-235678	ACIS-235678	Obspar file type	PREDICTED	ACTUAL
Grating	NONE	NONE	Obspar update status	NONE	UPDATED
Data mode	FAINT	FAINT	Number of optional ACIS chips dropped	0	0
Observation mode	POINTING	POINTING	On-chip summing requested	N	N
Pointing RA	221.309295	221.3040658430897	Subarray requested	NONE	NONE
Pointing Dec	-0.378848	-0.4056168650840573	Alternating exposures requested	N	N
Pointing Roll	227.966769	228.123370261457	Primary exposure time	0.000000	3.2
SIM focus pos (mm)	-0.684267	-0.6828225247311905			
SIM defocus (mm)	0	0.001444936568705701			
SIM translation stage pos (mm)	-190.132523	-190.1400660498719			
SIM translation stage offset (mm)	0	0.00754346686406393			
Observation start time	107588660.184000	107587629.71215			
Observation start date	2001-05-30T05:43:16	2001-05-30T05:27:09			
Observation end time	107593233.184000	107593547.54988			
Observation end date	2001-05-30T06:59:29	2001-05-30T07:05:47			
Read mode	TIMED	TIMED			

2.3 Aspect



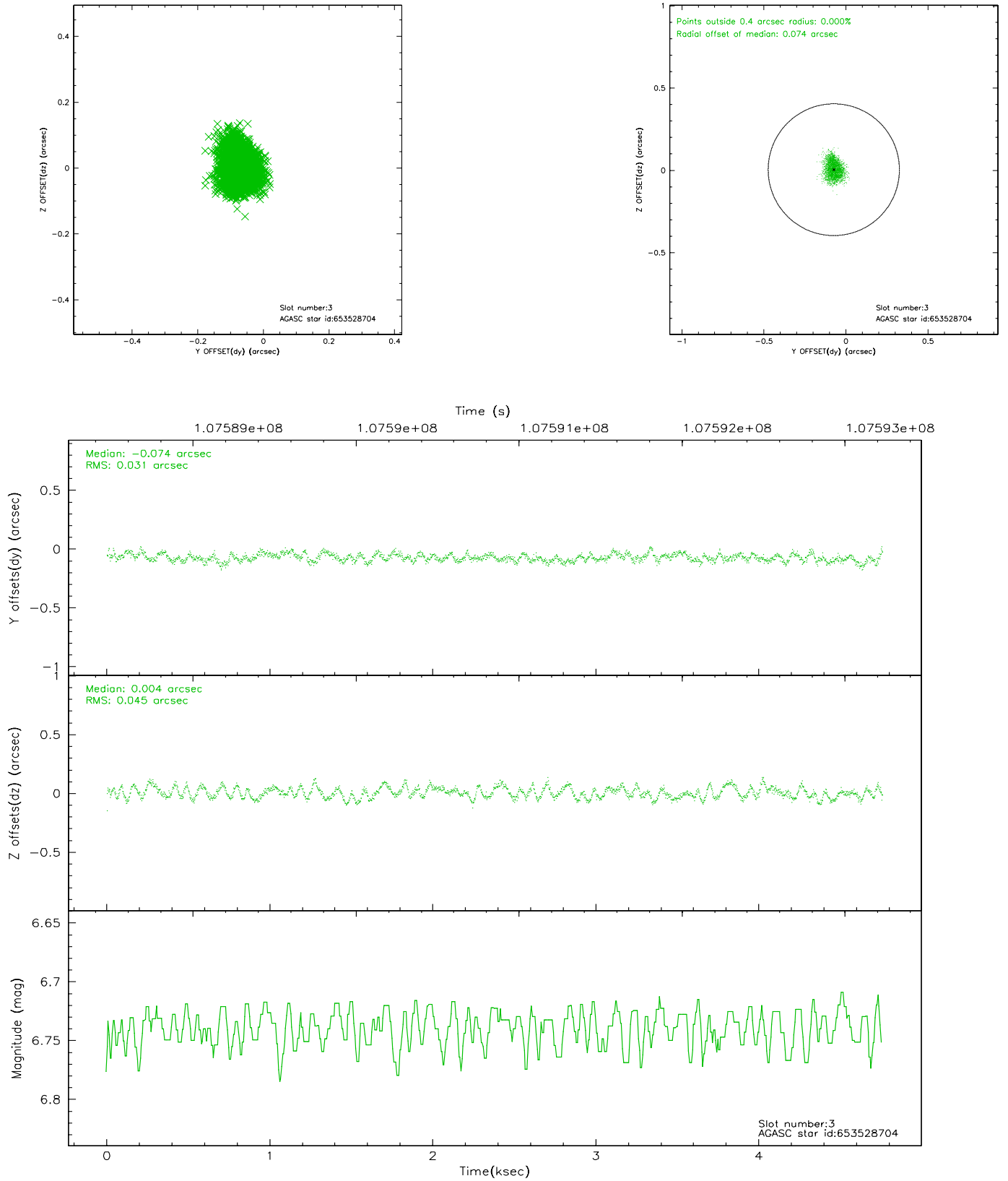


Slot Statistics

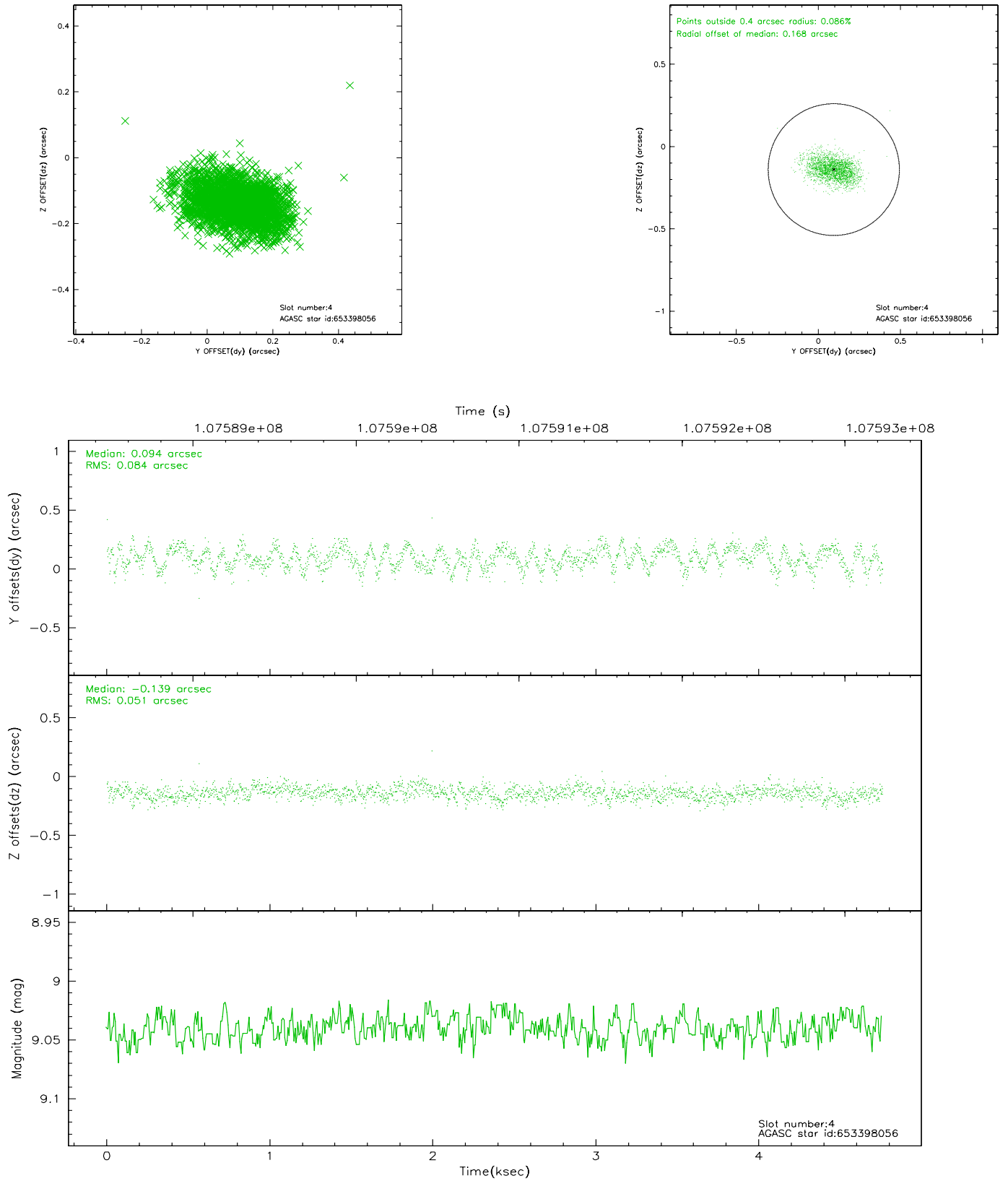
slot	status	id	mag	n_pts	med_dy	med_dz	dr1	dr2	ra	dec	mean_y	mean_z
0	FID	ACIS-S-2	7.11	1161	-0.011	0.037	0.006	0.010	0.000000	0.000000	-755.57	-1727.17
1	FID	ACIS-S-4	7.20	1161	-0.084	-0.005	0.005	0.009	0.000000	0.000000	2157.01	180.00
2	FID	ACIS-S-5	7.24	1161	0.064	-0.024	0.006	0.010	0.000000	0.000000	-1806.72	175.04
3	GUIDE	653528704	6.74	2322	-0.074	0.004	0.059	0.091	221.574190	-0.833772	579.29	1804.39
4	GUIDE	653398056	9.04	2319	0.094	-0.139	0.104	0.167	220.410402	-0.433838	2316.19	-2270.49
5	GUIDE	653530448	9.58	2318	0.000	0.010	0.089	0.143	221.252982	-0.577470	669.39	326.84
6	GUIDE	42734152	9.16	2322	-0.072	0.018	0.099	0.157	220.942067	0.047440	-252.36	-2009.96
7	GUIDE	653527640	9.44	2316	0.057	0.103	0.086	0.137	221.265613	-1.097844	2029.20	1615.35

2.4 Star Slots

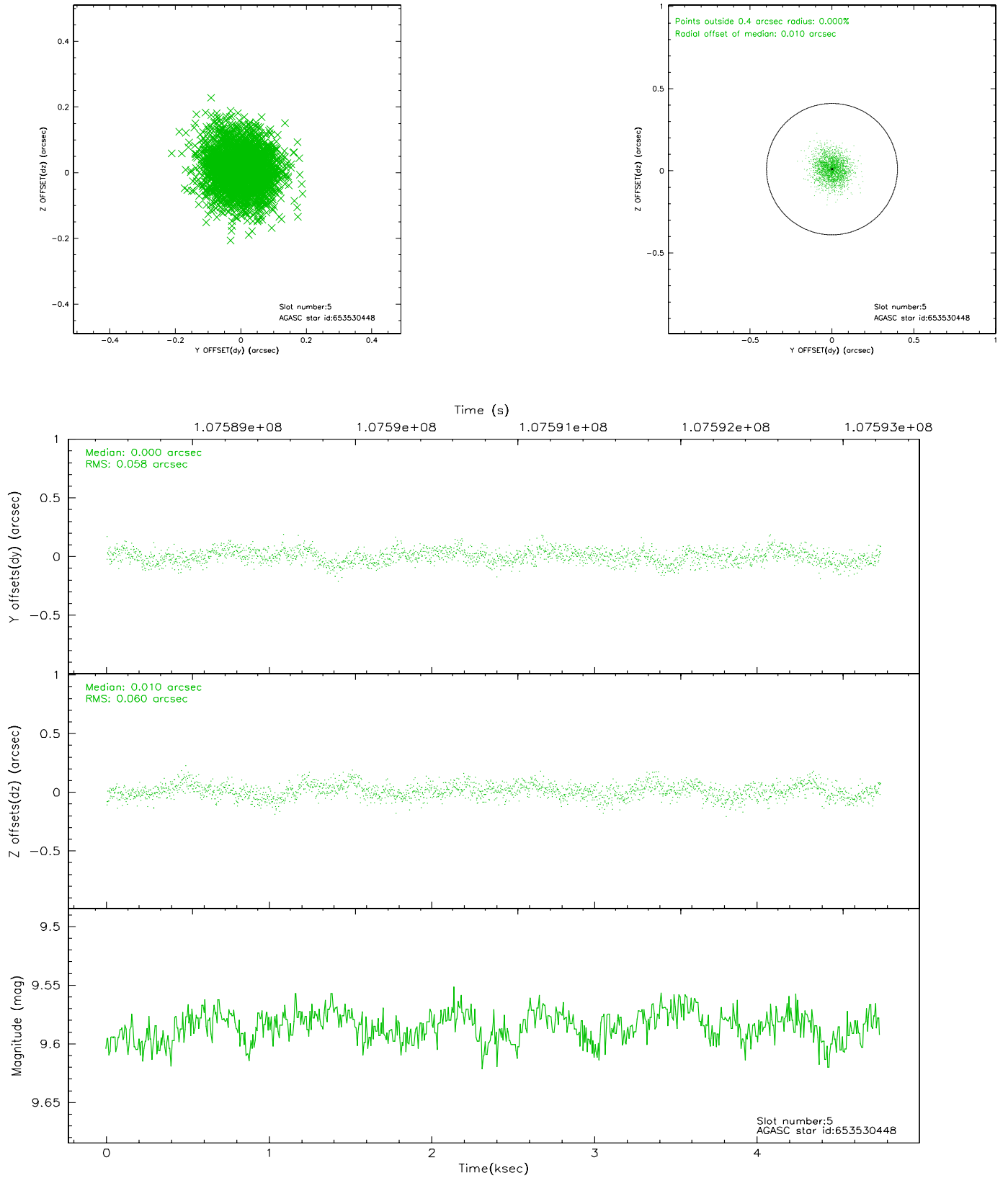
2.4.1 Slot 3



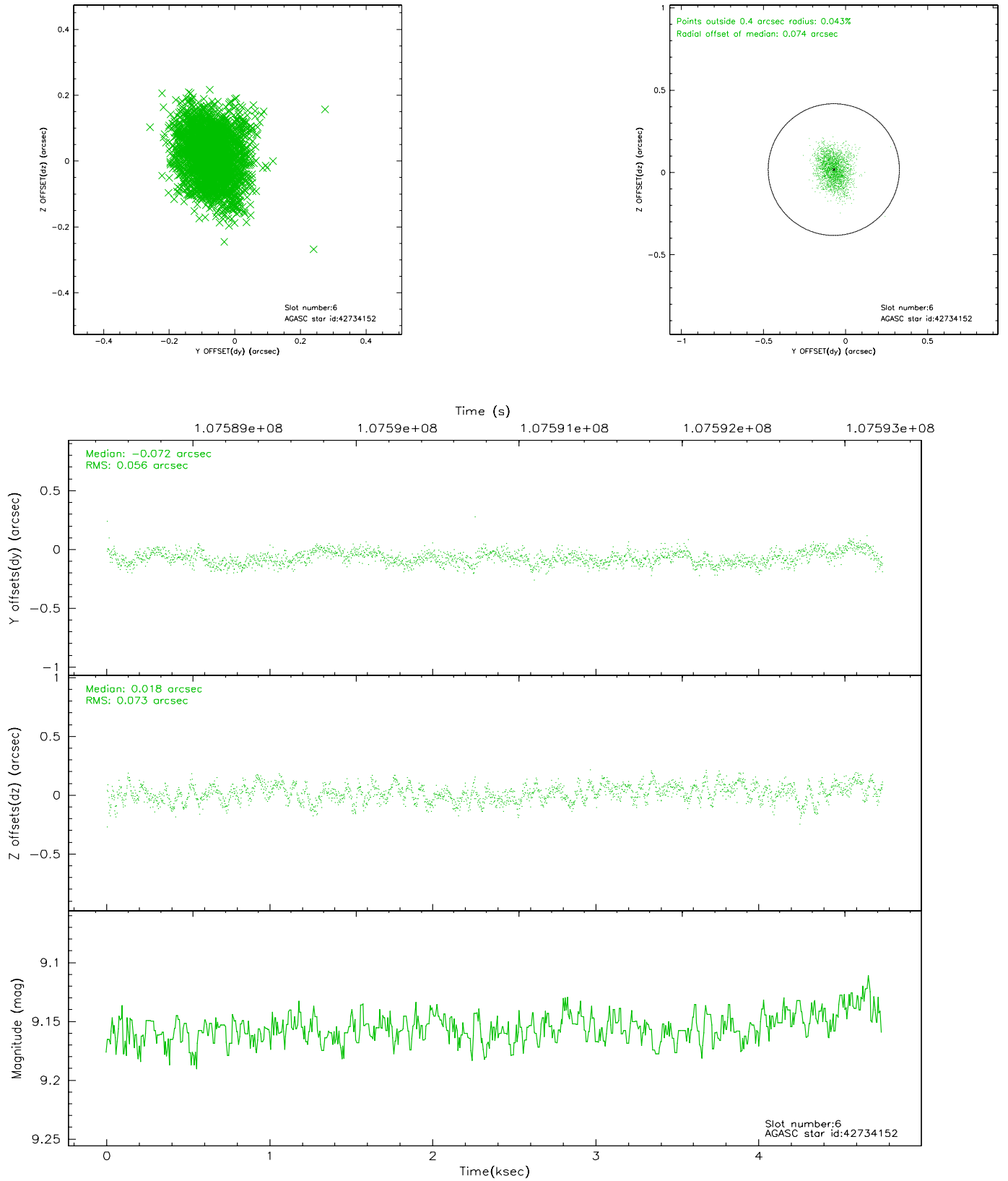
2.4.2 Slot 4



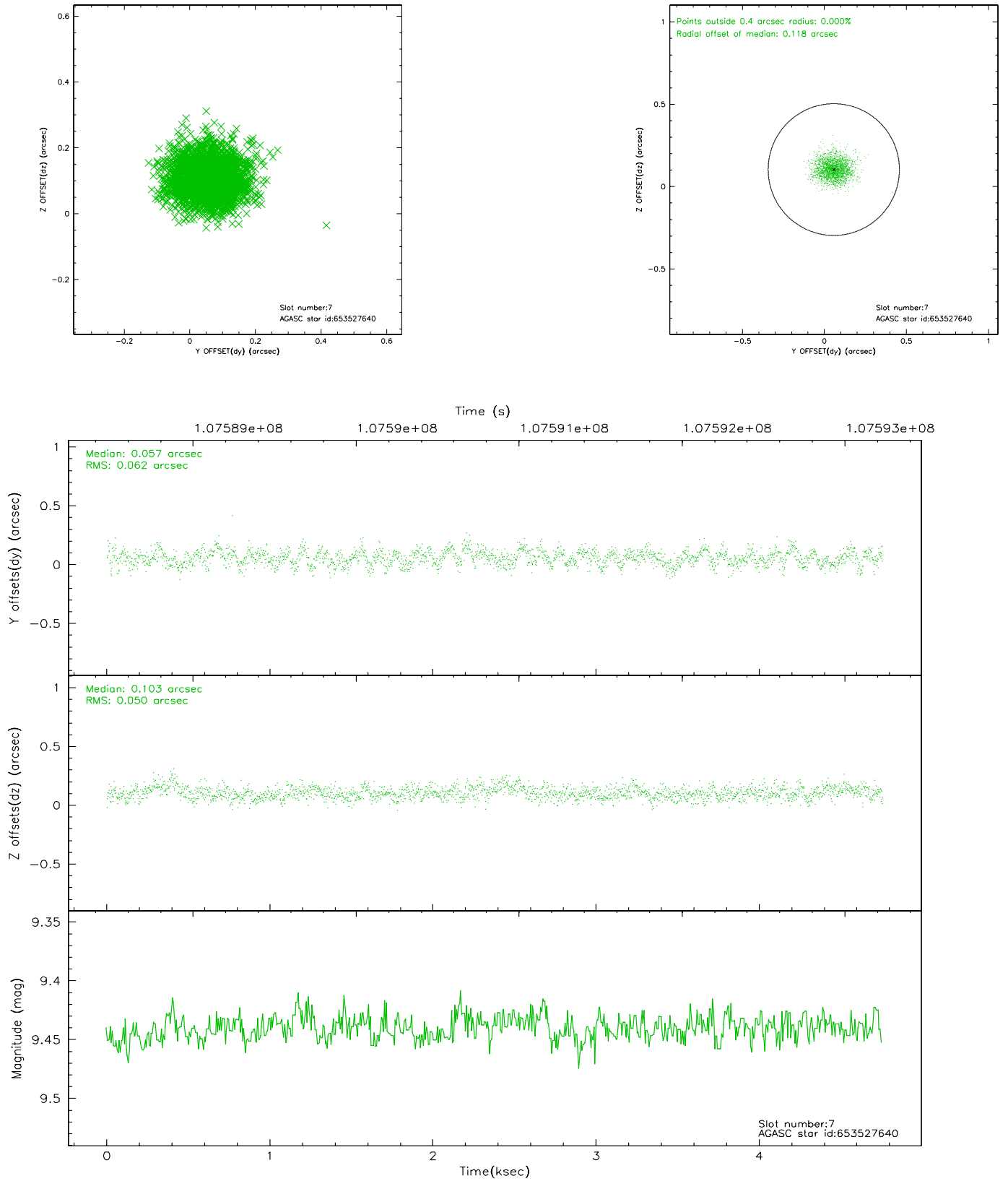
2.4.3 Slot 5



2.4.4 Slot 6

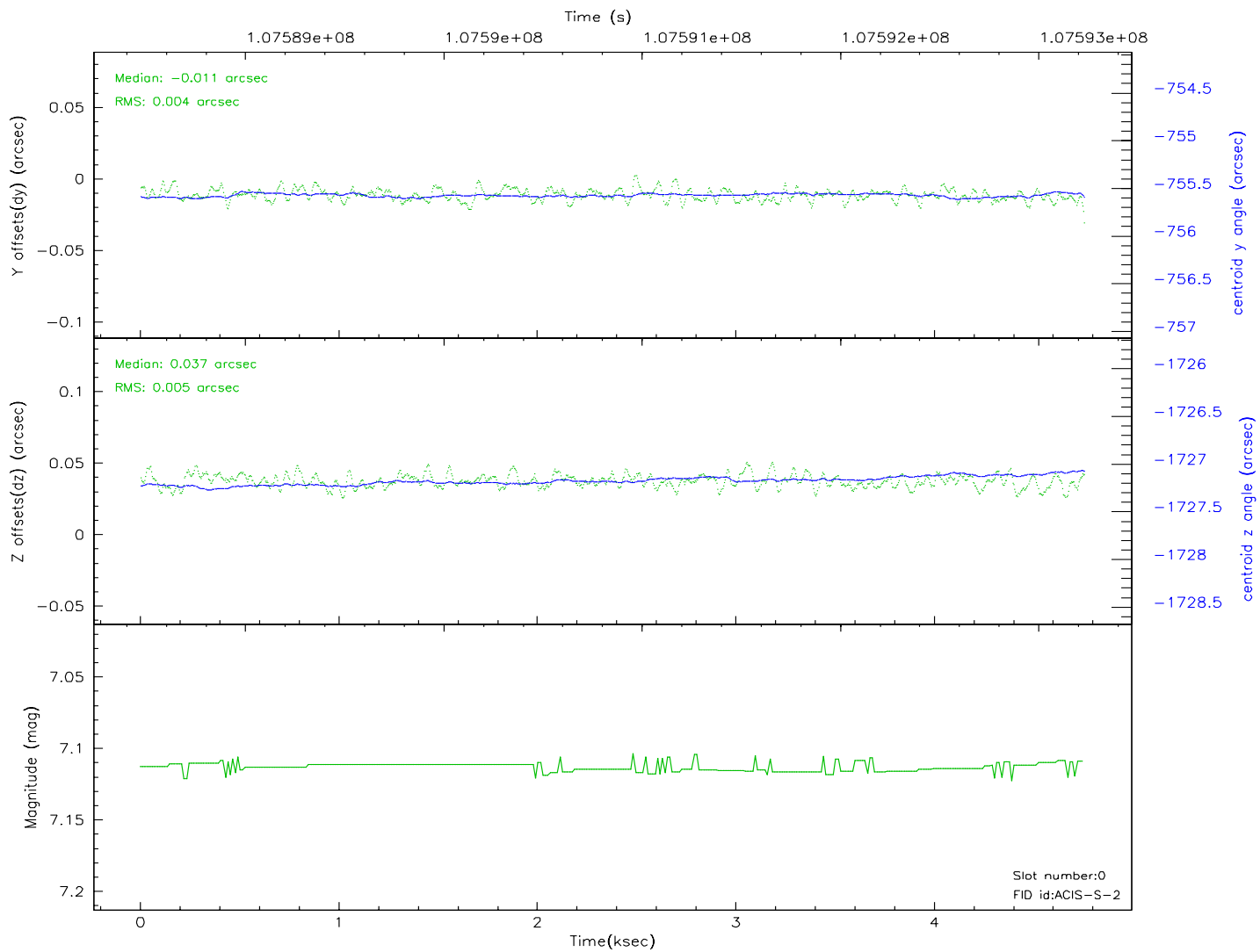
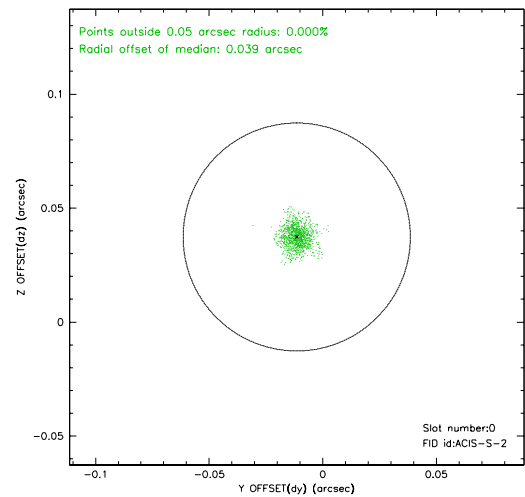
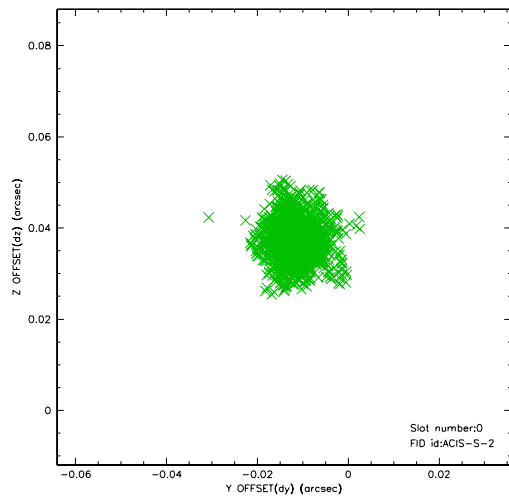


2.4.5 Slot 7

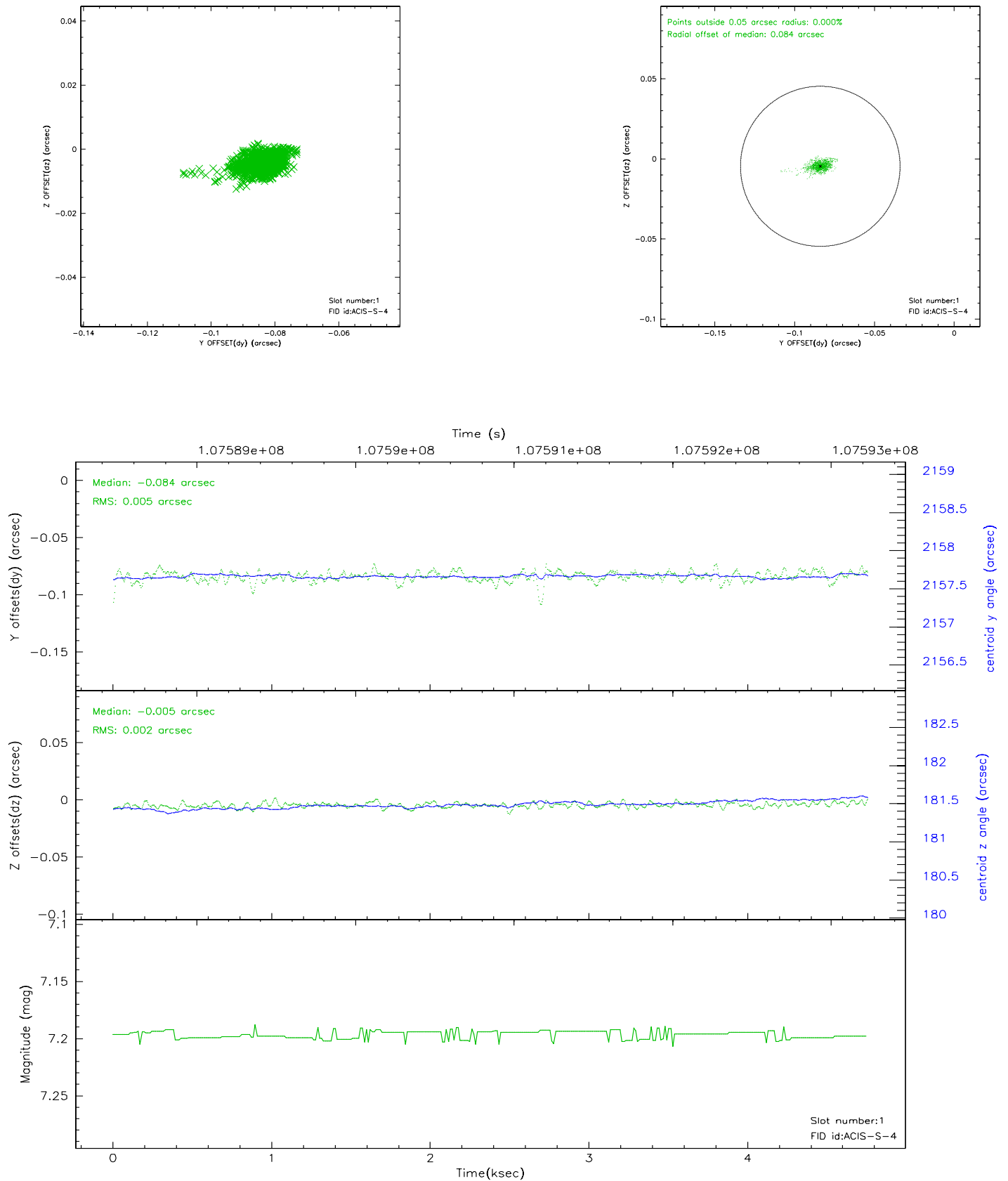


2.5 FID Slots

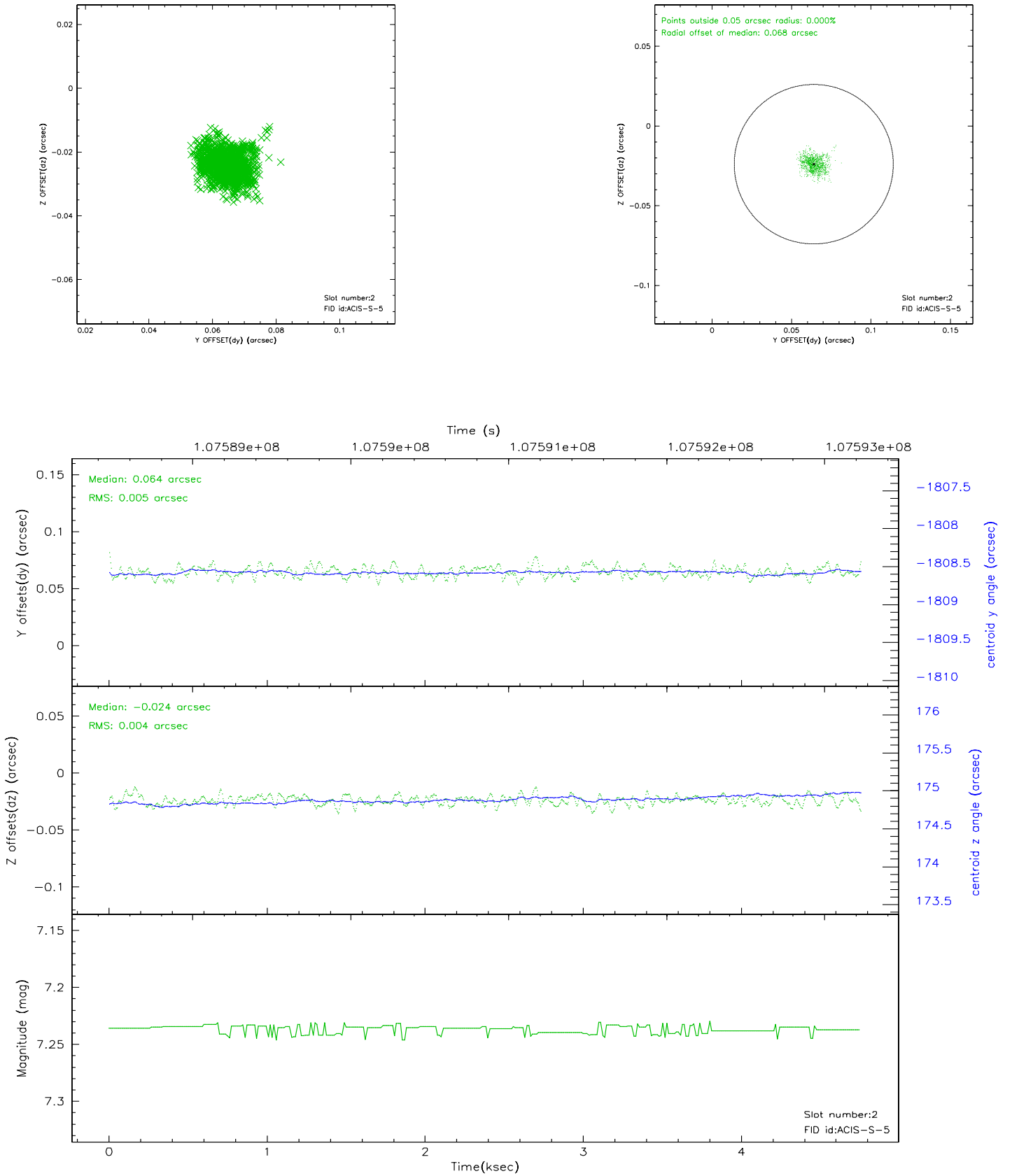
2.5.1 Slot 0



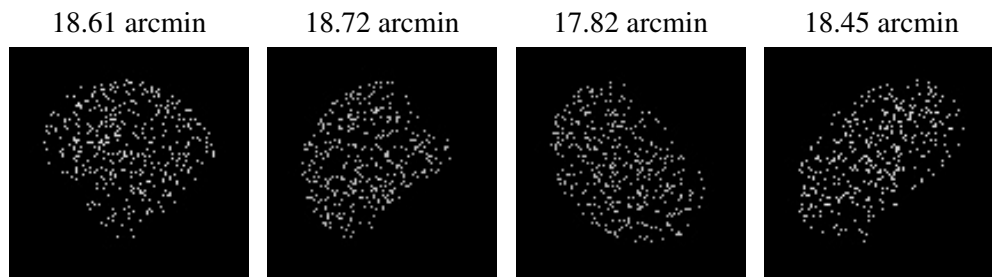
2.5.2 Slot 1



2.5.3 Slot 2



3 Point Sources



A Summary

A.1 Status

V&V Scientist	Jen Lauer
V&V Date (YYYY-MM-DD)	2006.11.24
V&V Edition	1
V&V Disposition and Status	OK
V&V Charge Time	4.332

A.2 Comments