

V&V Reference Report

L2 ASCDS Version : 7.6.9

Observation 2110 - L2 Version 001
Chandra X-Ray Center

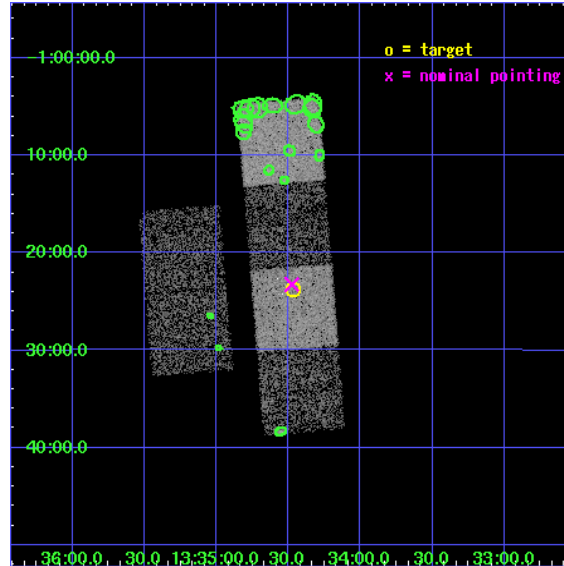
L2 Processing Date : Nov 15 2006

Contents

1	Front	2
2	OBI	3
2.1	OBI	3
2.1.1	Images	3
2.1.2	Bias	3
2.1.3	Parameters	4
2.1.4	Events	4
2.2	Compared Parameters	5
2.3	Aspect	6
2.4	Star Slots	9
2.4.1	Slot 3	9
2.4.2	Slot 4	10
2.4.3	Slot 5	11
2.4.4	Slot 6	12
2.4.5	Slot 7	13
2.5	FID Slots	14
2.5.1	Slot 0	14
2.5.2	Slot 1	15
2.5.3	Slot 2	16
3	Point Sources	17
A	Summary	18
A.1	Status	18
A.2	Comments	18

1 Front

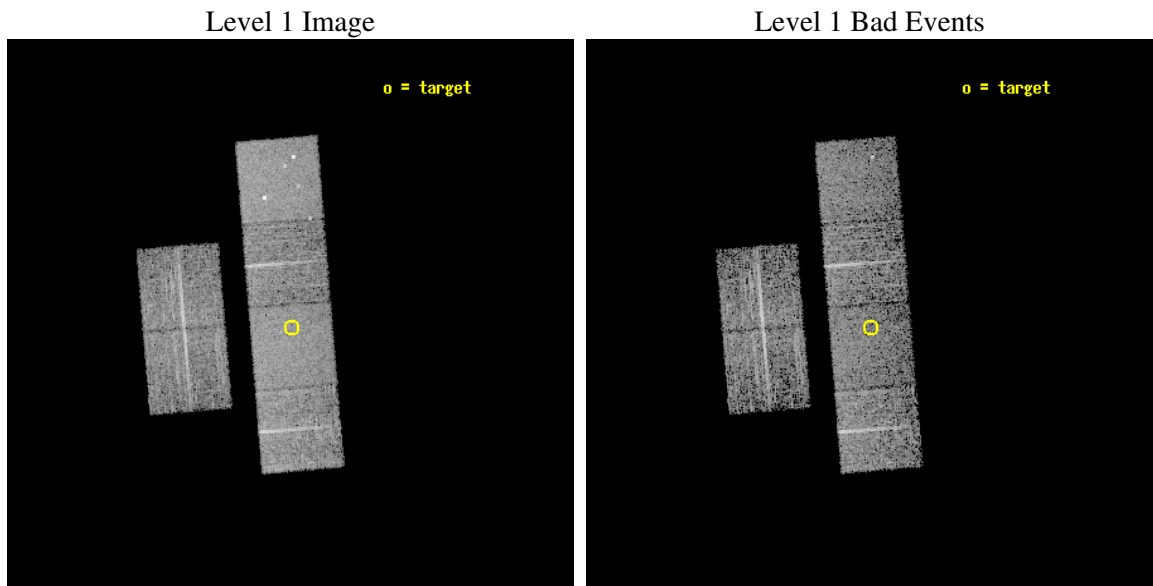
seq_num	700300
obs_id	2110
title	PUBLIC OBSERVATIONS OF A WELL-DEFINED SAMPLE OF BAL QSOS FROM THE LARGE BRIGHT QUASAR SURVEY: REMOVING THE BARRIERS
observer	Prof. William Brandt
object	LBQS 1331-0108
dtcycle	0
cycle	P
ra_targ	203.616667
dec_targ	-1.397
ra_nom	203.61922203832
dec_nom	-1.3874966240986
roll_nom	85.26057937304
revision	2
ontime	5123.2000047714
livetime	5058.3269614903
ontime2	5123.2000047714
ontime3	5123.2000047714
ontime5	5123.2000047714
ontime6	5123.2000047714
ontime7	5123.2000047714
ontime8	5123.2000047714
l2events	49700



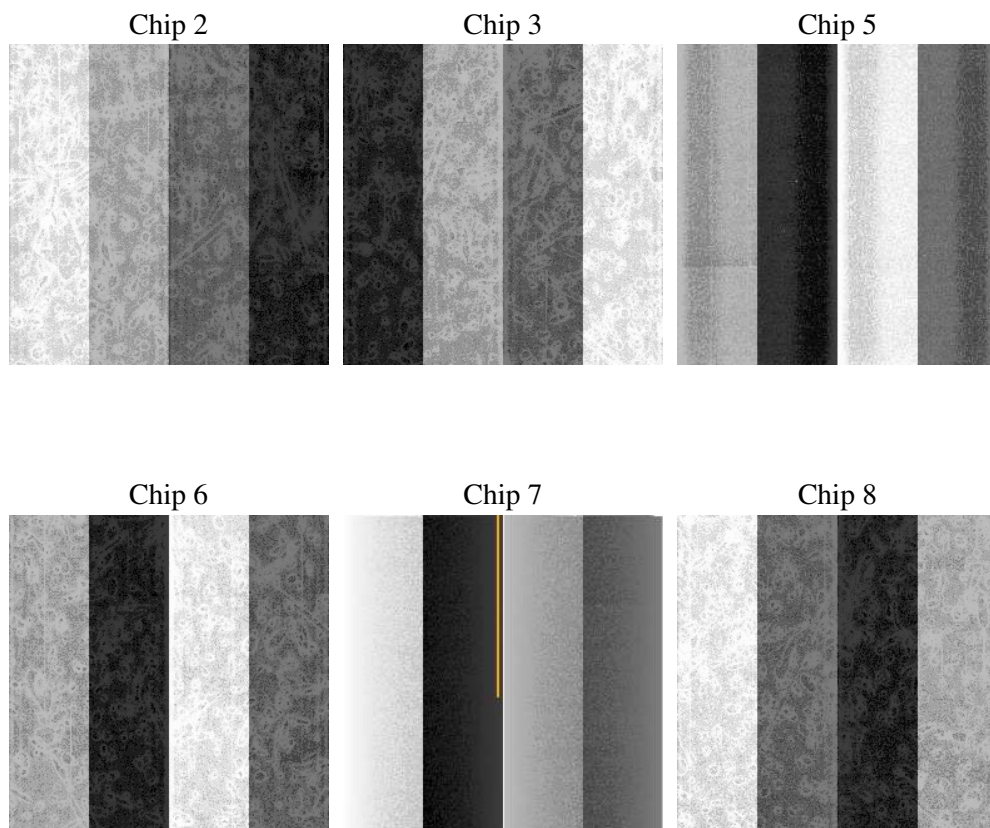
2 OBI

2.1 OBI

2.1.1 Images



2.1.2 Bias



2.1.3 Parameters

obi_num	0
ascdsver	7.6.9
caldbver	3.2.4
date	2006-11-15T17:06:52
revision	2

sched_exp_time	5000.000000
ontime	5130.5008786321
ontime2	5130.5008786321
ontime3	5130.5008786321
ontime5	5130.5009085387
ontime6	5130.5008786321
ontime7	5130.5008786321
ontime8	5130.5008786321
l1events	238141

2.1.4 Events

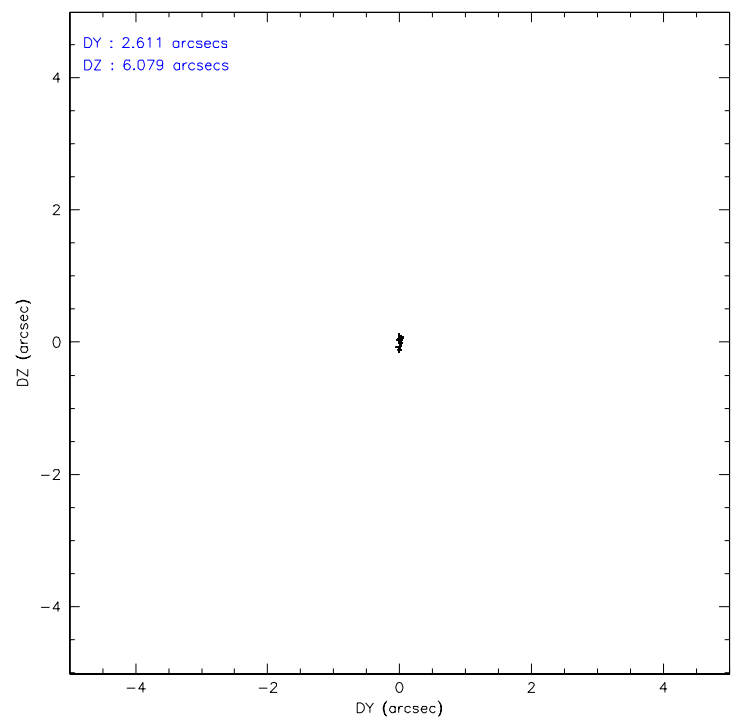
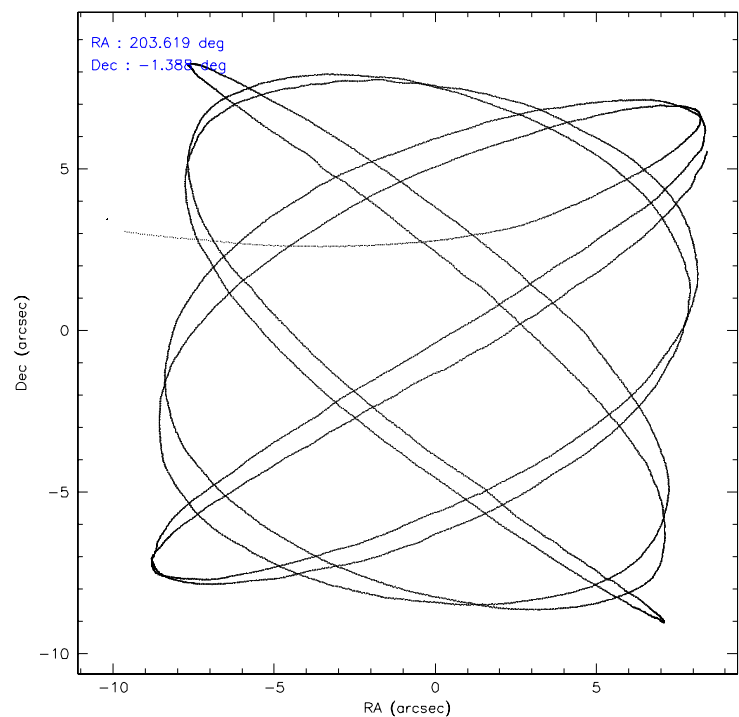
	ccd 2	ccd 3	ccd 5	ccd 6	ccd 7	ccd 8
level 1 events	34246	33543	49060	34662	43256	43374
rejected events	30399	29772	27018	30672	26590	34578
rejected %	88%	88%	55%	88%	61%	79%

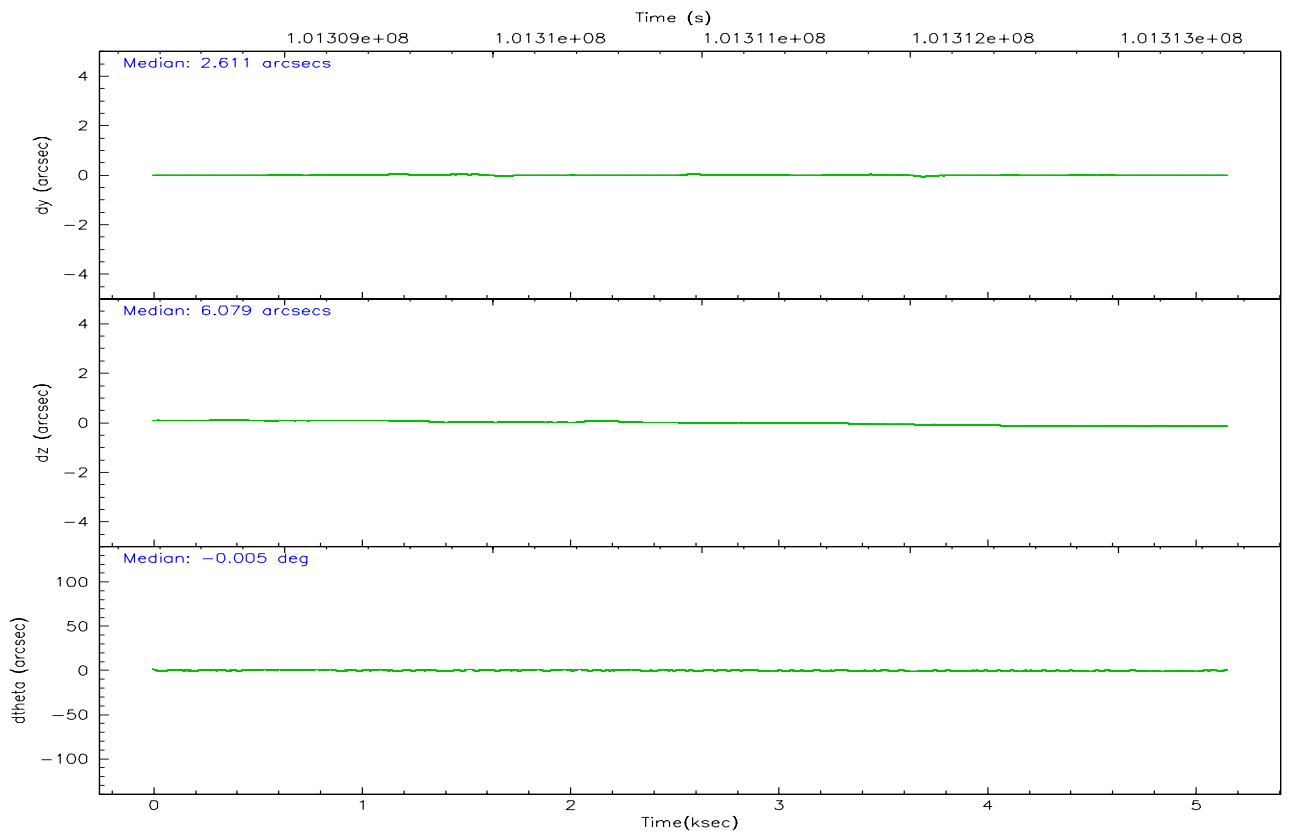
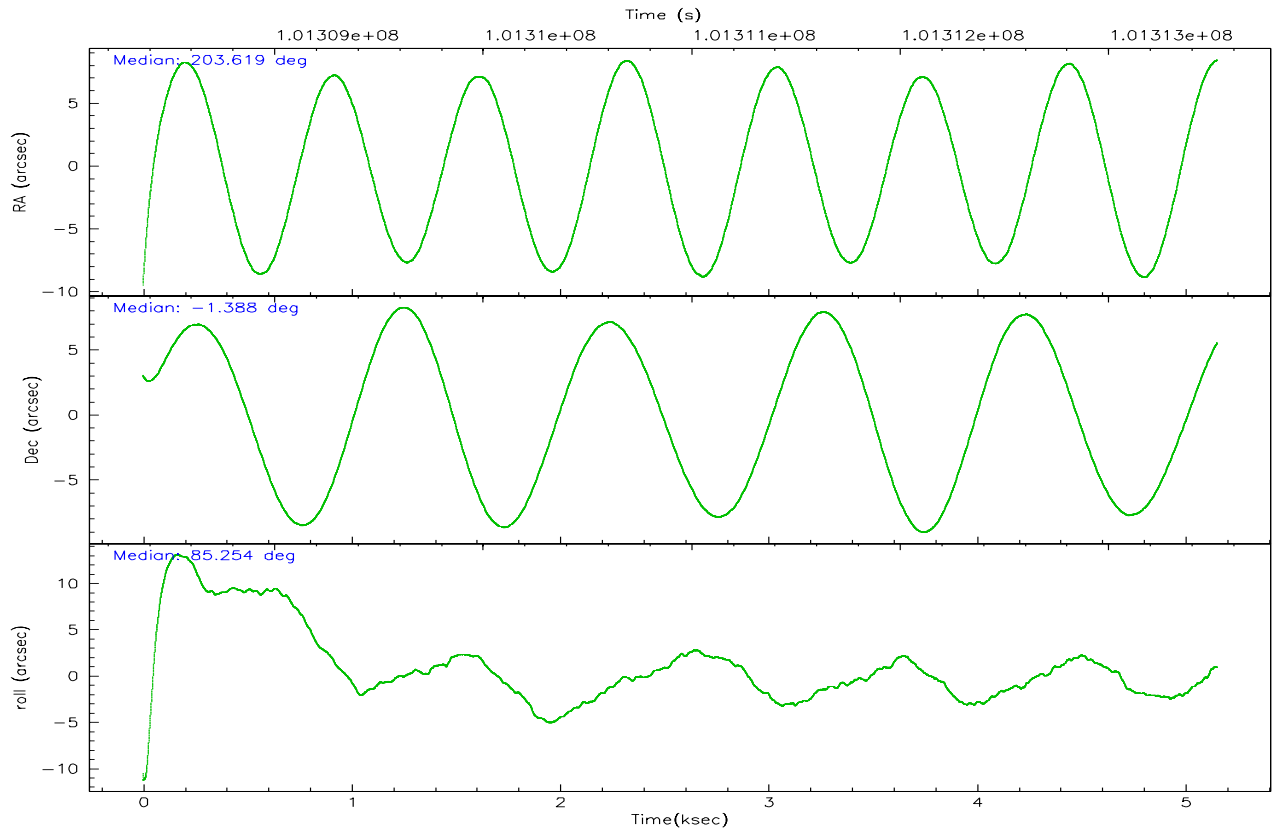
	ccd 2	ccd 3	ccd 5	ccd 6	ccd 7	ccd 8
grade 0 events	1665	1607	2461	1658	1102	2836
	4%	4%	5%	4%	2%	6%
grade 1 events	20	17	71	14	29	24
	0%	0%	0%	0%	0%	0%
grade 2 events	820	794	6709	776	4065	1922
	2%	2%	13%	2%	9%	4%
grade 3 events	335	360	523	385	903	902
	0%	1%	1%	1%	2%	2%
grade 4 events	352	362	428	371	924	857
	1%	1%	0%	1%	2%	1%
grade 5 events	1185	1291	2395	1383	2978	1842
	3%	3%	4%	3%	6%	4%
grade 6 events	680	649	11941	808	9697	2286
	1%	1%	24%	2%	22%	5%
grade 7 events	29189	28463	24532	29267	23558	32705
	85%	84%	50%	84%	54%	75%

2.2 Compared Parameters

Parameter	Planned	Actual	Parameter	Planned	Actual
Instrument	ACIS	ACIS	Obspar format version number	6	6
Detector	ACIS-235678	ACIS-235678	Obspar file type	PREDICTED	ACTUAL
Grating	NONE	NONE	Obspar update status	NONE	UPDATED
Data mode	FAINT	FAINT	Number of optional ACIS chips dropped	0	0
Observation mode	POINTING	POINTING	On-chip summing requested	N	N
Pointing RA	203.631098	203.6192220383243	Subarray requested	NONE	NONE
Pointing Dec	-1.412122	-1.387496624098581	Alternating exposures requested	N	N
Pointing Roll	85.104290	85.26057937304002	Primary exposure time	0.000000	3.2
SIM focus pos (mm)	-0.684267	-0.6828225247311905			
SIM defocus (mm)	0	0.001444936568705701			
SIM translation stage pos (mm)	-190.132523	-190.1425803651734			
SIM translation stage offset (mm)	0	0.01005778216563158			
Observation start time	101308518.184000	101307433.45597			
Observation start date	2001-03-18T13:14:14	2001-03-18T12:57:13			
Observation end time	101313518.184000	101313978.59372			
Observation end date	2001-03-18T14:37:34	2001-03-18T14:46:18			
Read mode	TIMED	TIMED			

2.3 Aspect



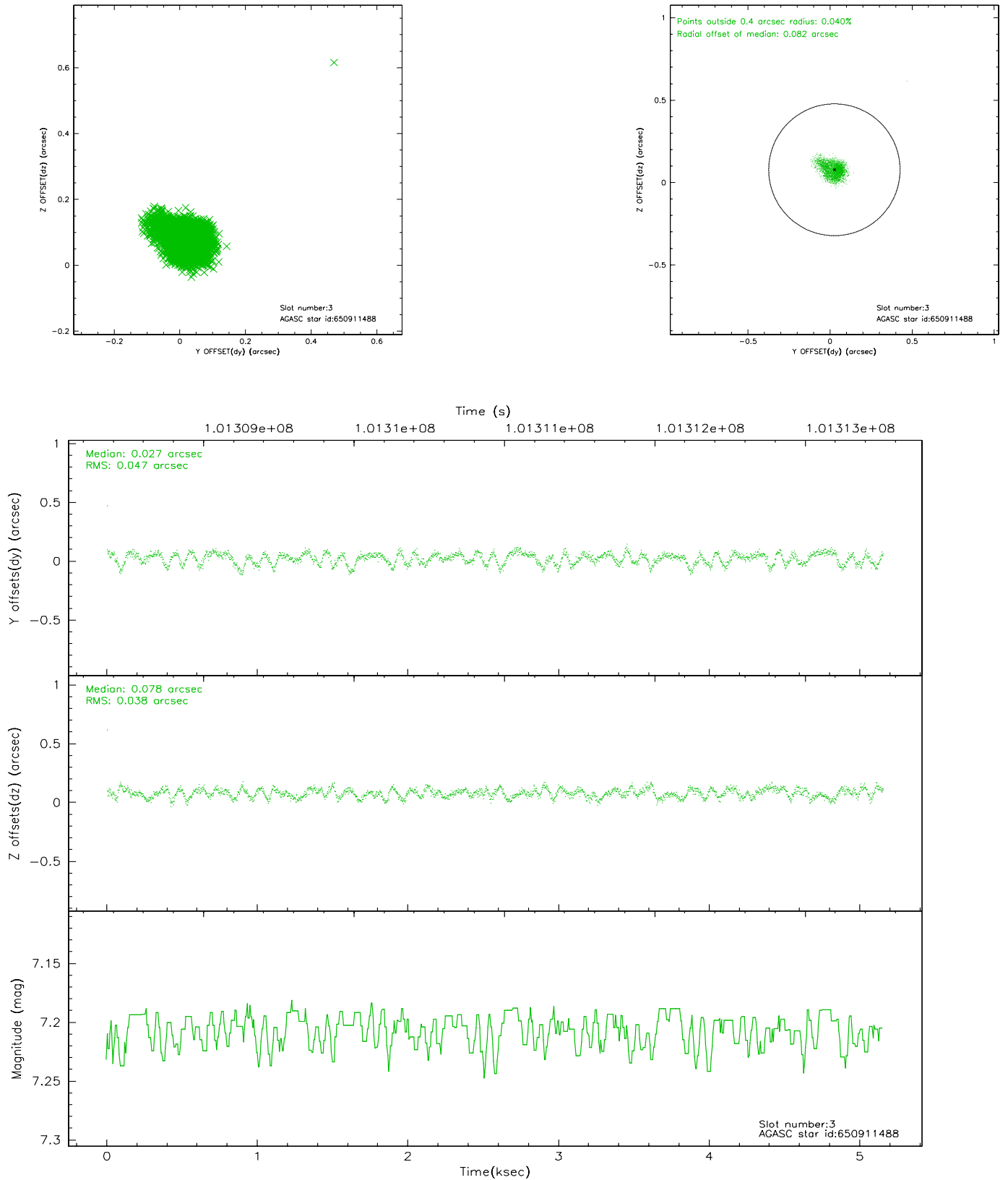


Slot Statistics

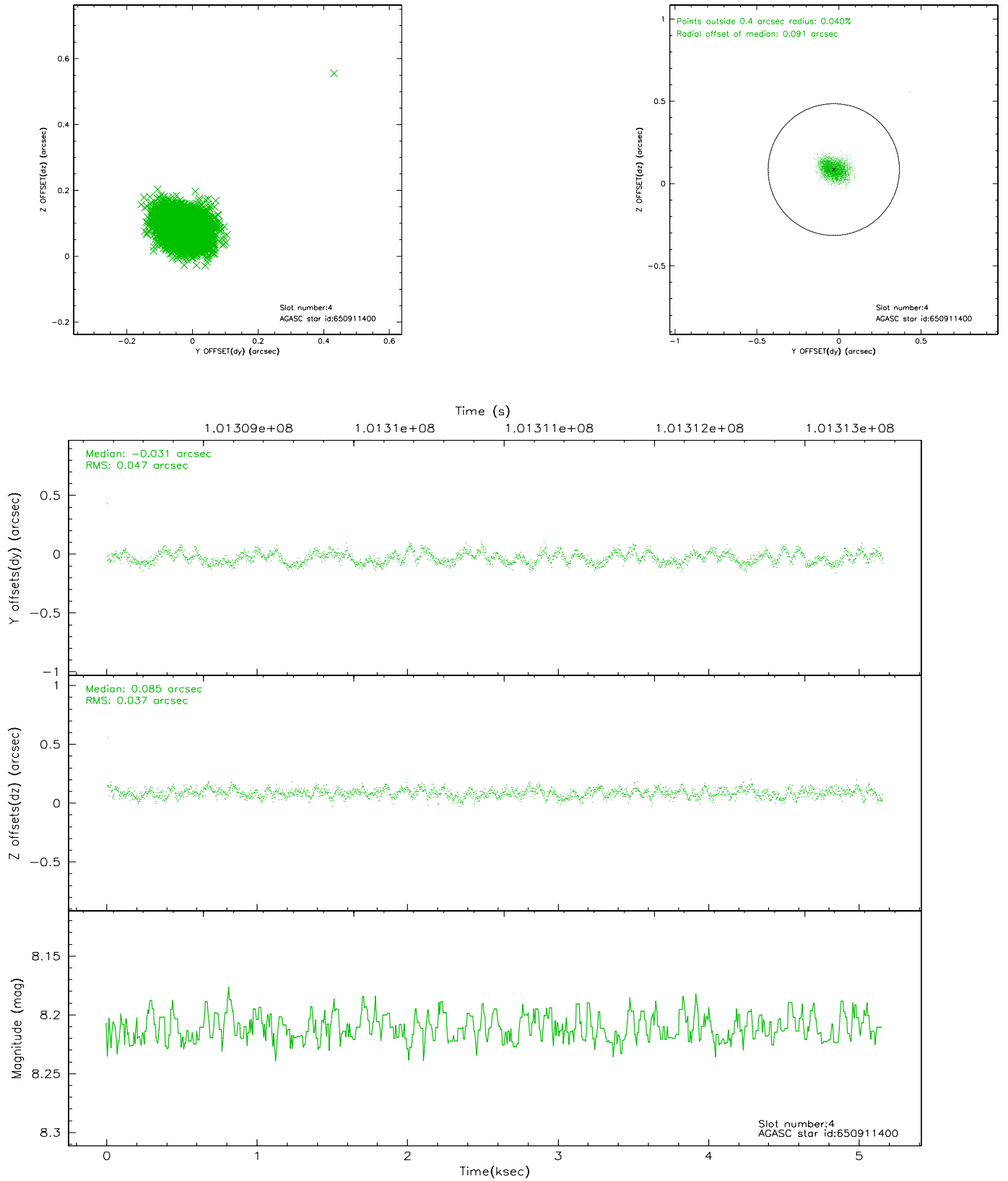
slot	status	id	mag	n_pts	med_dy	med_dz	dr1	dr2	ra	dec	mean_y	mean_z
0	FID	ACIS-S-2	7.11	1257	-0.024	0.024	0.006	0.010	0.000000	0.000000	-755.23	-1727.16
1	FID	ACIS-S-4	7.20	1257	-0.065	0.005	0.005	0.009	0.000000	0.000000	2157.43	180.16
2	FID	ACIS-S-5	7.24	1257	0.058	-0.021	0.005	0.010	0.000000	0.000000	-1806.52	175.06
3	GUIDE	650911488	7.21	2515	0.027	0.078	0.061	0.104	204.061036	-0.930991	1858.13	-1394.28
4	GUIDE	650911400	8.21	2515	-0.031	0.085	0.063	0.098	204.183307	-1.260588	714.18	-1934.75
5	GUIDE	650913312	8.38	2515	-0.084	0.090	0.052	0.085	203.969171	-0.964889	1708.57	-1076.20
6	GUIDE	650912424	9.22	2515	-0.024	-0.090	0.063	0.104	203.589398	-0.866485	1945.26	316.25
7	GUIDE	650906736	9.43	2512	0.118	-0.159	0.082	0.130	203.434610	-1.424854	-104.93	699.99

2.4 Star Slots

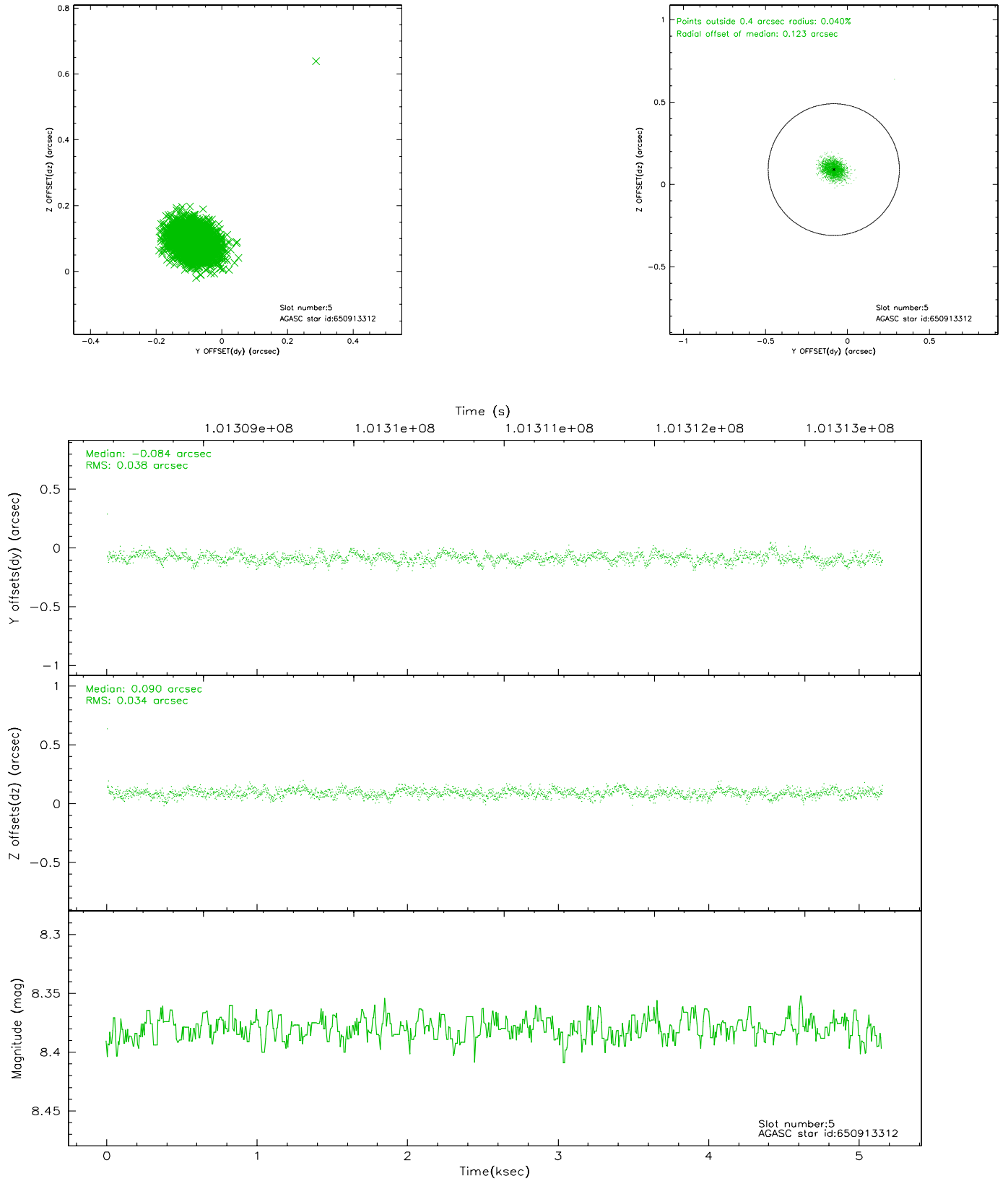
2.4.1 Slot 3



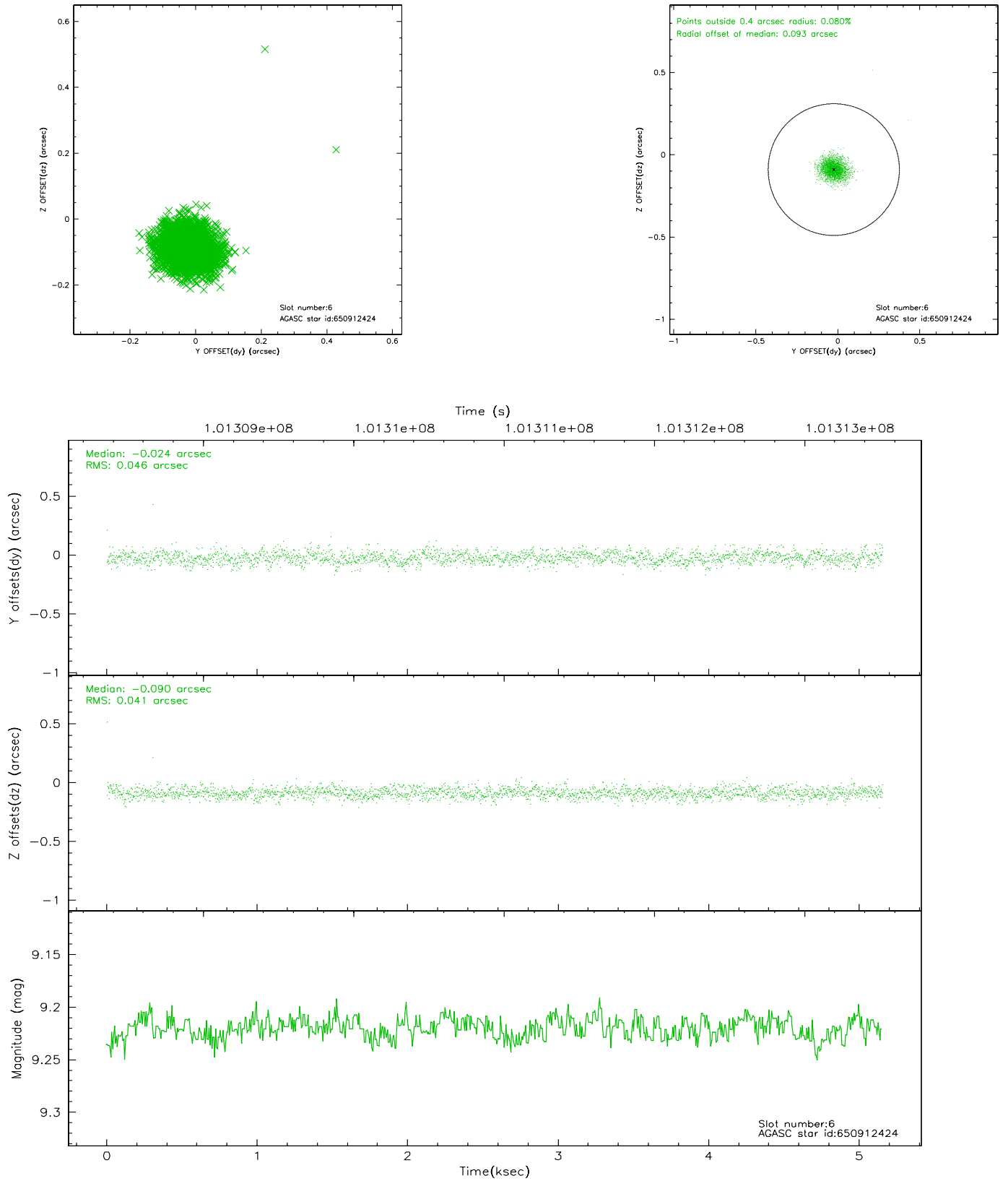
2.4.2 Slot 4



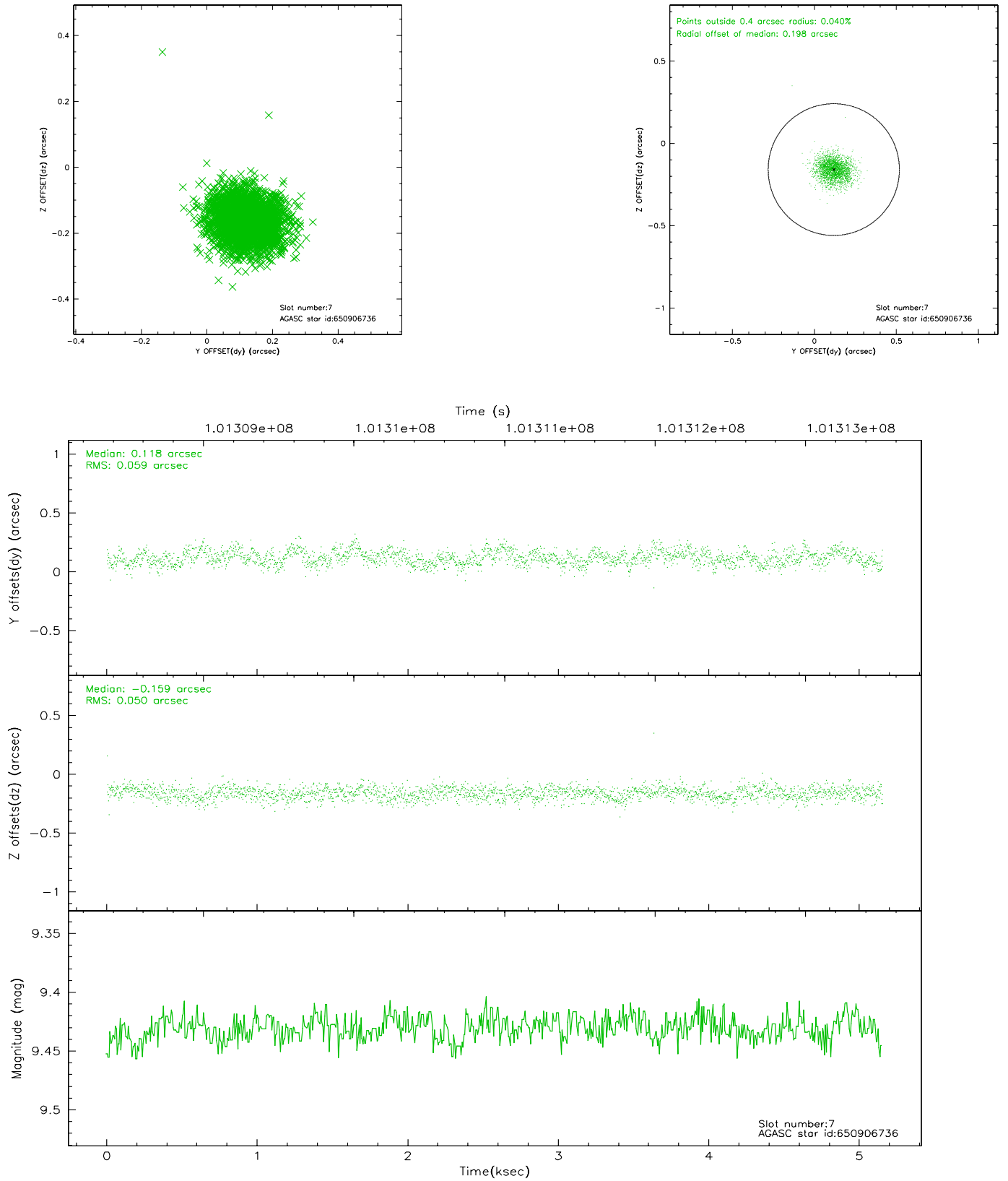
2.4.3 Slot 5



2.4.4 Slot 6

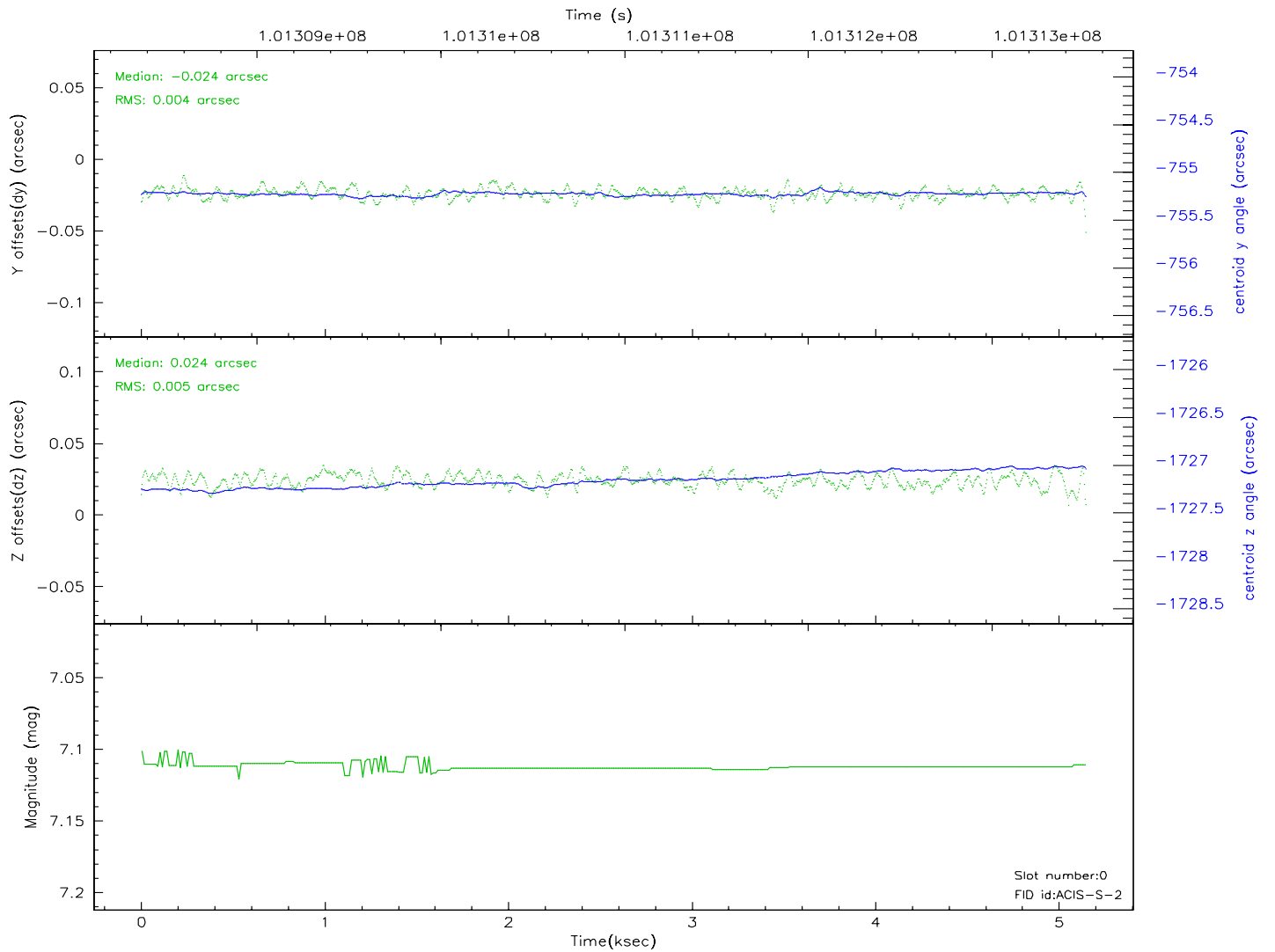
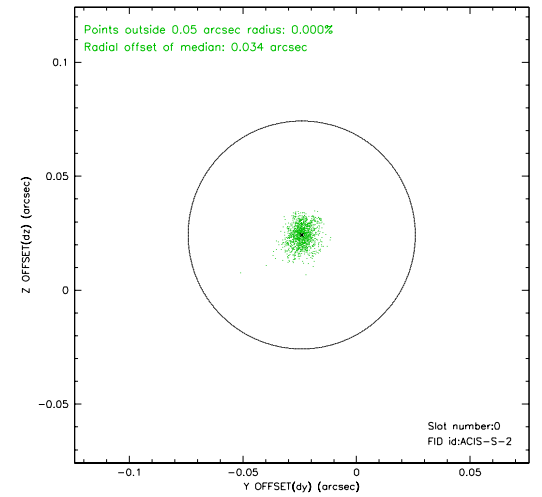
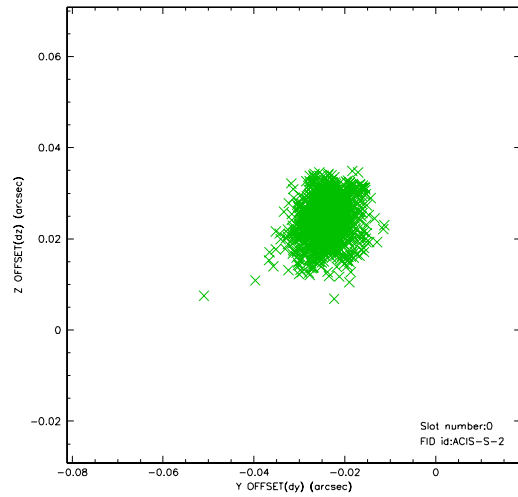


2.4.5 Slot 7

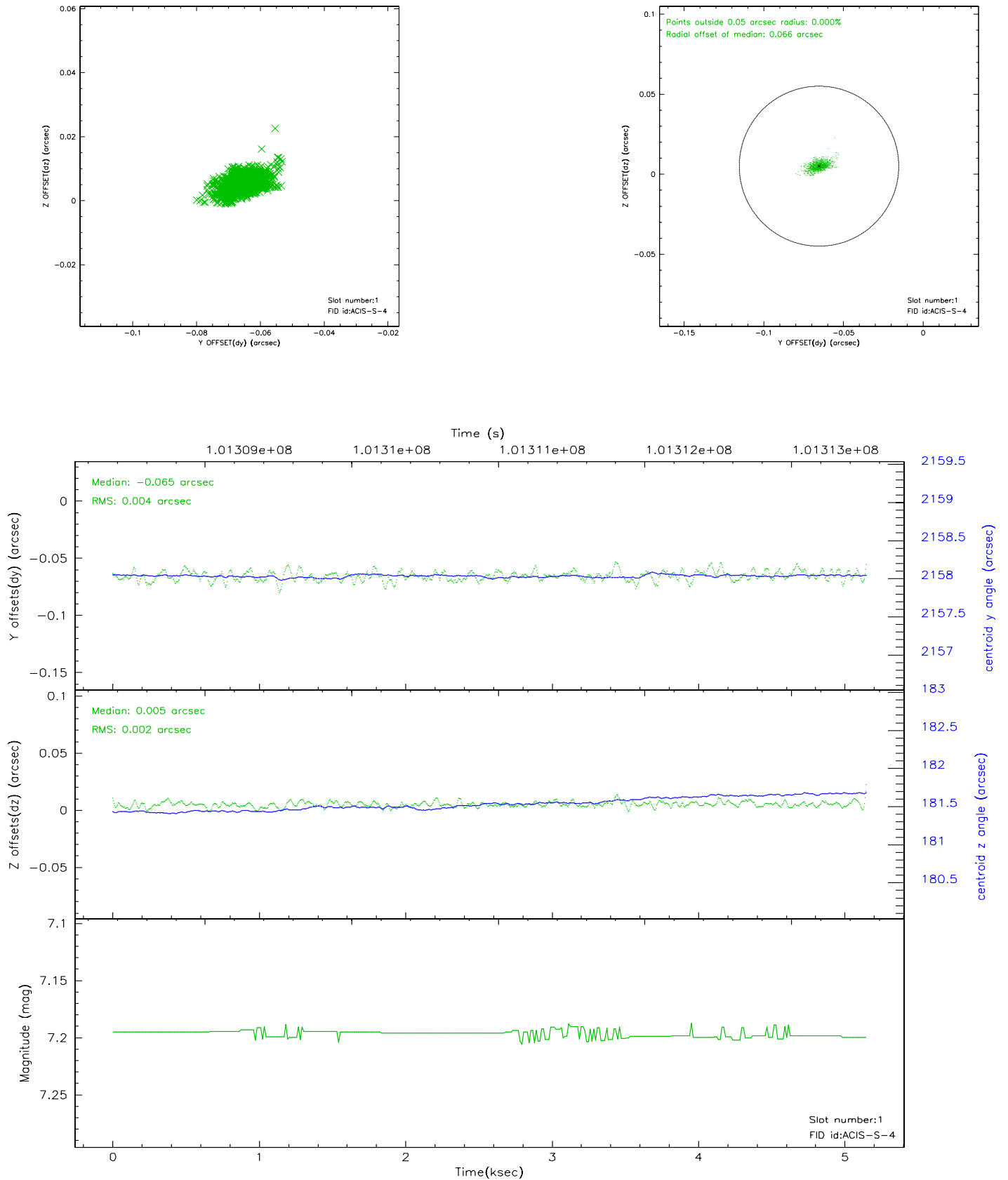


2.5 FID Slots

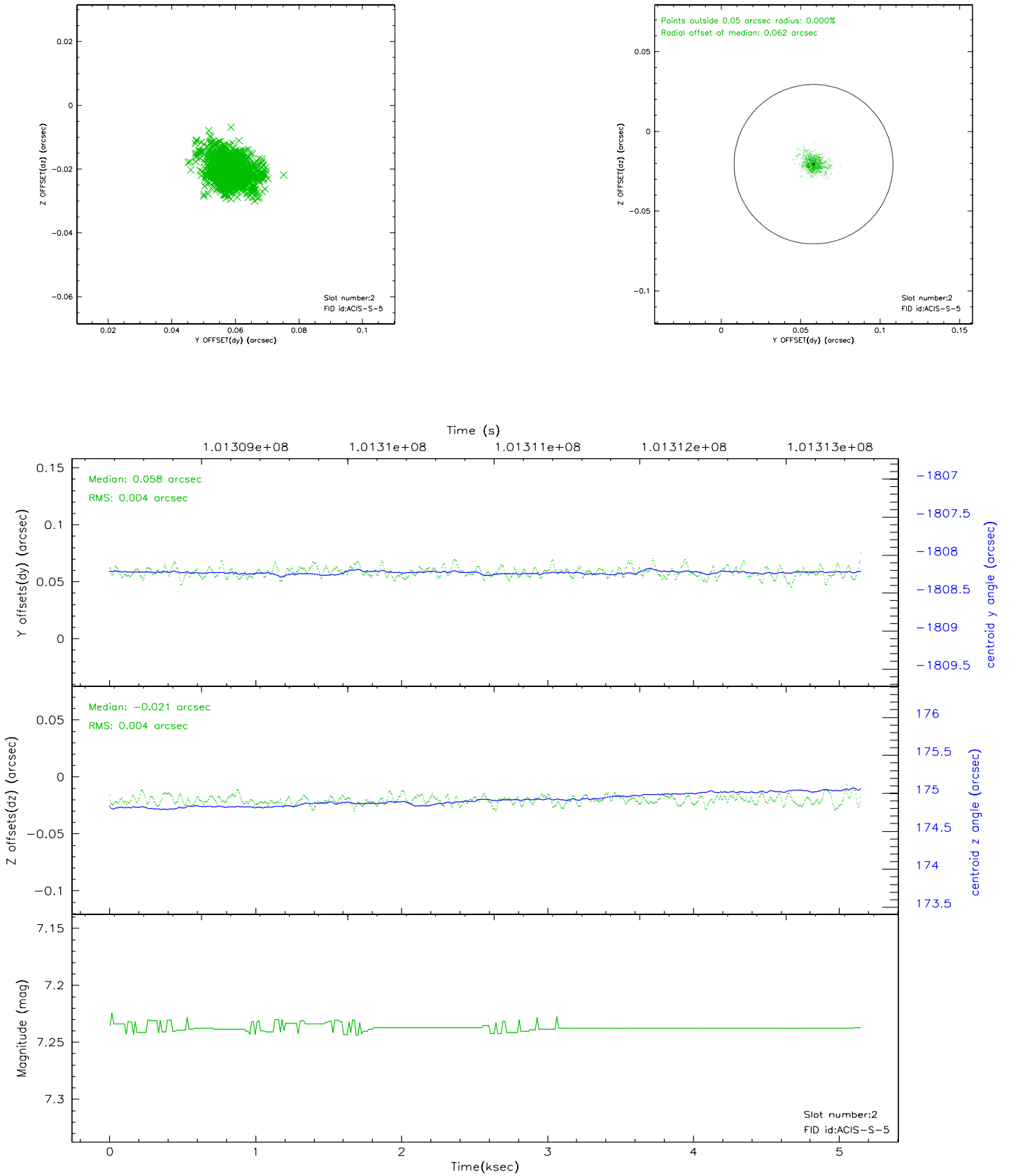
2.5.1 Slot 0



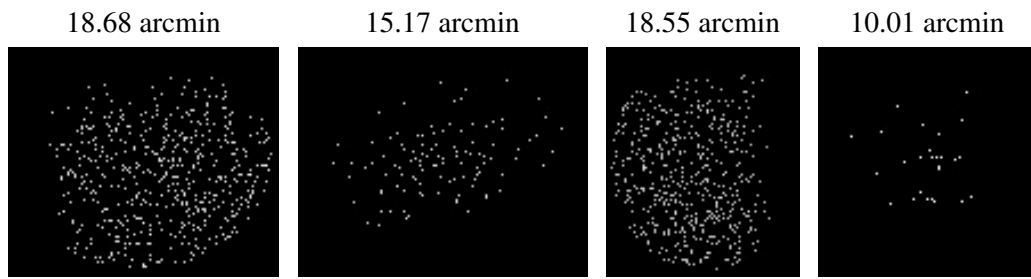
2.5.2 Slot 1



2.5.3 Slot 2



3 Point Sources



A Summary

A.1 Status

V&V Scientist	Jen Lauer
V&V Date (YYYY-MM-DD)	2006.11.15
V&V Edition	1
V&V Disposition and Status	OK
V&V Charge Time	5.126

A.2 Comments