

V&V Reference Report

L2 ASCDS Version : 8.4.5

Observation 2109 - L2 Version 3
Chandra X-Ray Center

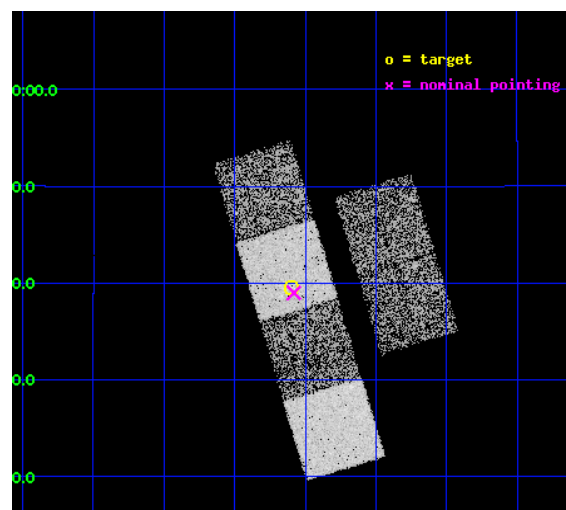
L2 Processing Date : Sep 21 2012

Contents

1	Front	2
2	OBI	3
2.1	OBI	3
2.1.1	Images	3
2.1.2	Bias	3
2.1.3	Parameters	4
2.1.4	Events	4
2.2	Compared Parameters	5
2.3	Aspect	6
2.4	Star Slots	9
2.4.1	Slot 3	9
2.4.2	Slot 4	10
2.4.3	Slot 5	11
2.4.4	Slot 6	12
2.4.5	Slot 7	13
2.5	FID Slots	14
2.5.1	Slot 0	14
2.5.2	Slot 1	15
2.5.3	Slot 2	16
A	Summary	17
A.1	Status	17
A.2	Comments	17

1 Front

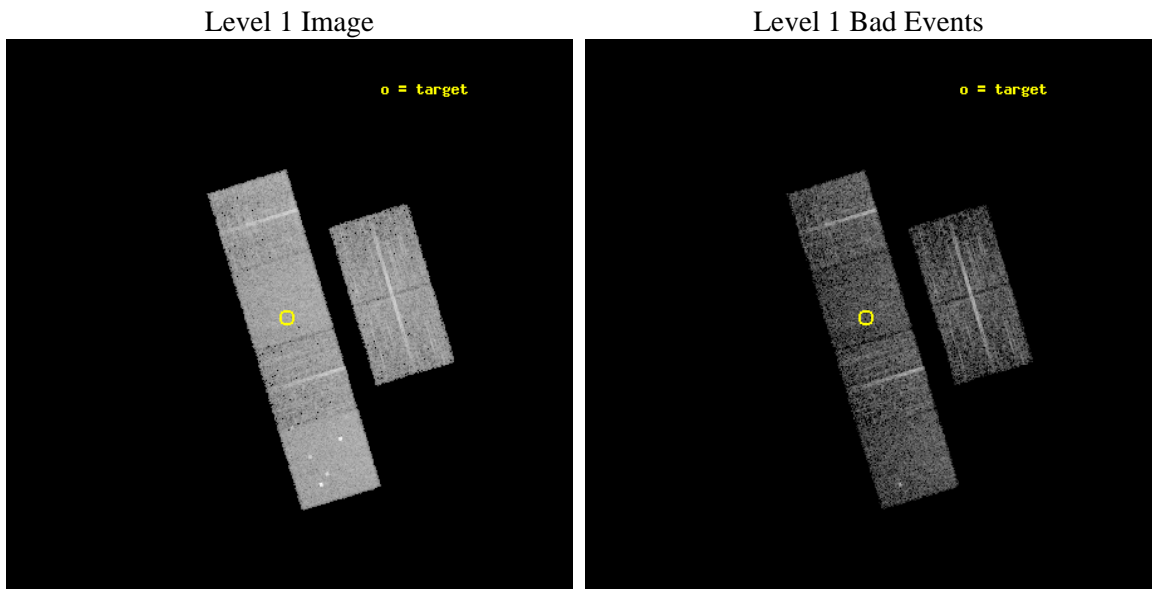
seq_num	700299	Sequence number
obs_id	2109	Observation id
title	PUBLIC OBSERVATIONS OF A WELL-DEFINED SAMPLE OF BAL QSOs FROM THE LARGE BRIGHT QUASAR SURVEY: REMOVING THE BARRIERS	Proposal title
observer	Prof. William Brandt	Principal investigator
object	LBQS 1239+0955	Source name
dtcycle	0	
cycle	P	events from which exps? Prim/Second/Both
ra_targ	190.399583	Observer's specified target RA [deg]
dec_targ	9.6585	Observer's specified target Dec [deg]
ra_nom	190.39512222393	Nominal RA [deg]
dec_nom	9.6498560670443	Nominal Dec [deg]
roll_nom	253.16125009217	Nominal Roll [deg]
revision	3	Processing version of data
ontime	5222.4000048488	Sum of GTIs [s]
livetime	5156.2708314357	Livetime [s]
ontime2	5222.4000048488	Sum of GTIs [s]
ontime3	5222.4000048488	Sum of GTIs [s]
ontime5	5222.4000048488	Sum of GTIs [s]
ontime6	5222.4000048488	Sum of GTIs [s]
ontime7	5222.4000048488	Sum of GTIs [s]
ontime8	5222.4000048488	Sum of GTIs [s]
l2events	52601	Number of level 2 events



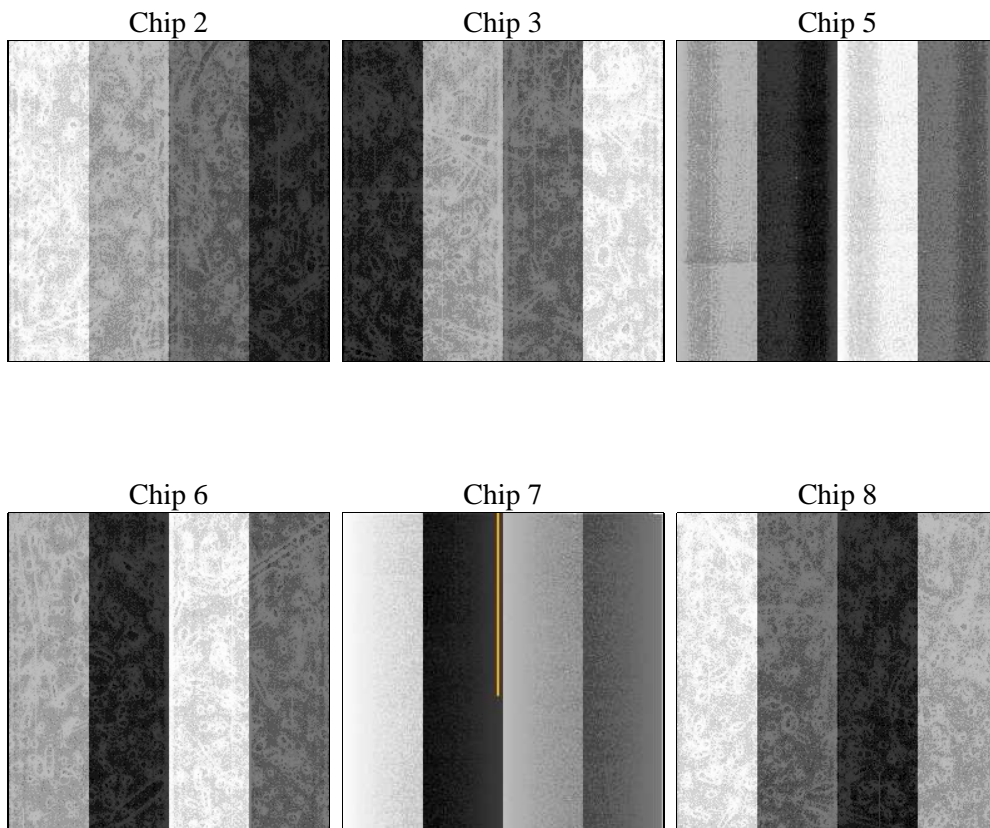
2 OBI

2.1 OBI

2.1.1 Images



2.1.2 Bias



2.1.3 Parameters

obi_num	2	Obi number	sched_exp_time	5200.000000	[s] Scheduled observation exposure time
ascdsver	8.4.5	Processing system revision	ontime	5222.4000048488	Sum of GTIs [s]
caldsver	4.5.1.1	 	ontime2	5222.4000048488	Sum of GTIs [s]
date	2012-09-21T09:02:29	Date and time of file creation	ontime3	5222.4000048488	Sum of GTIs [s]
revision	3	Processing version of data	ontime5	5222.4000048488	Sum of GTIs [s]
			ontime6	5222.4000048488	Sum of GTIs [s]
			ontime7	5222.4000048488	Sum of GTIs [s]
			ontime8	5222.4000048488	Sum of GTIs [s]
			l1events	240221	Number of level 1 events

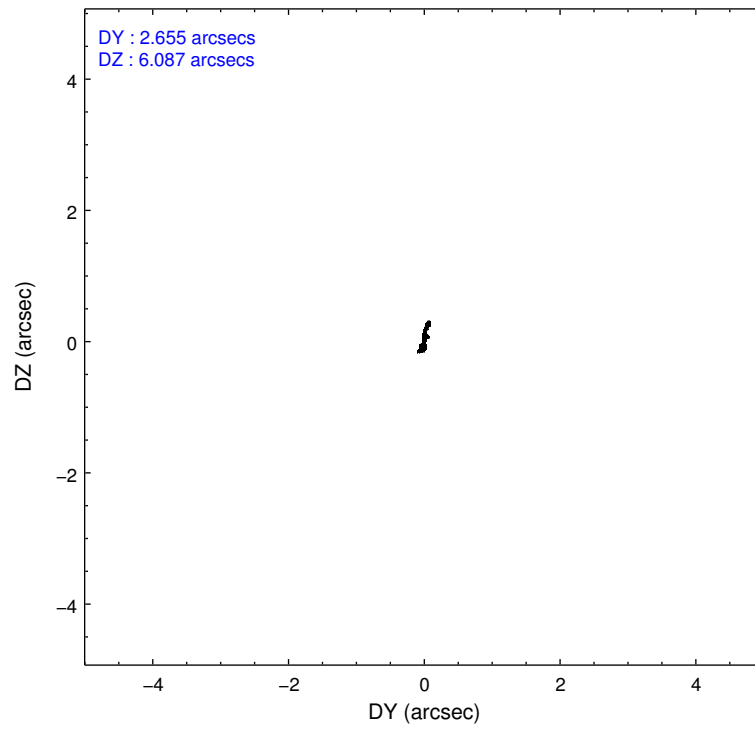
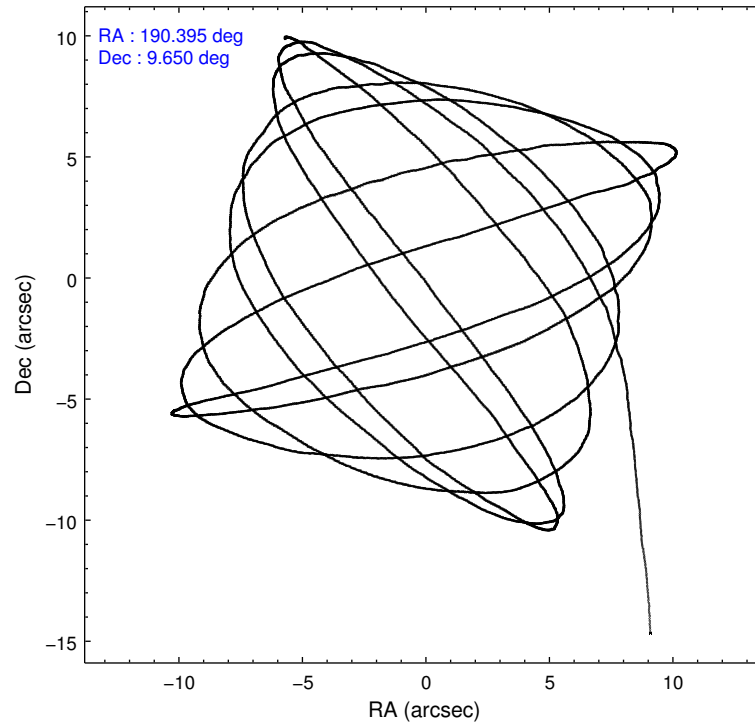
2.1.4 Events

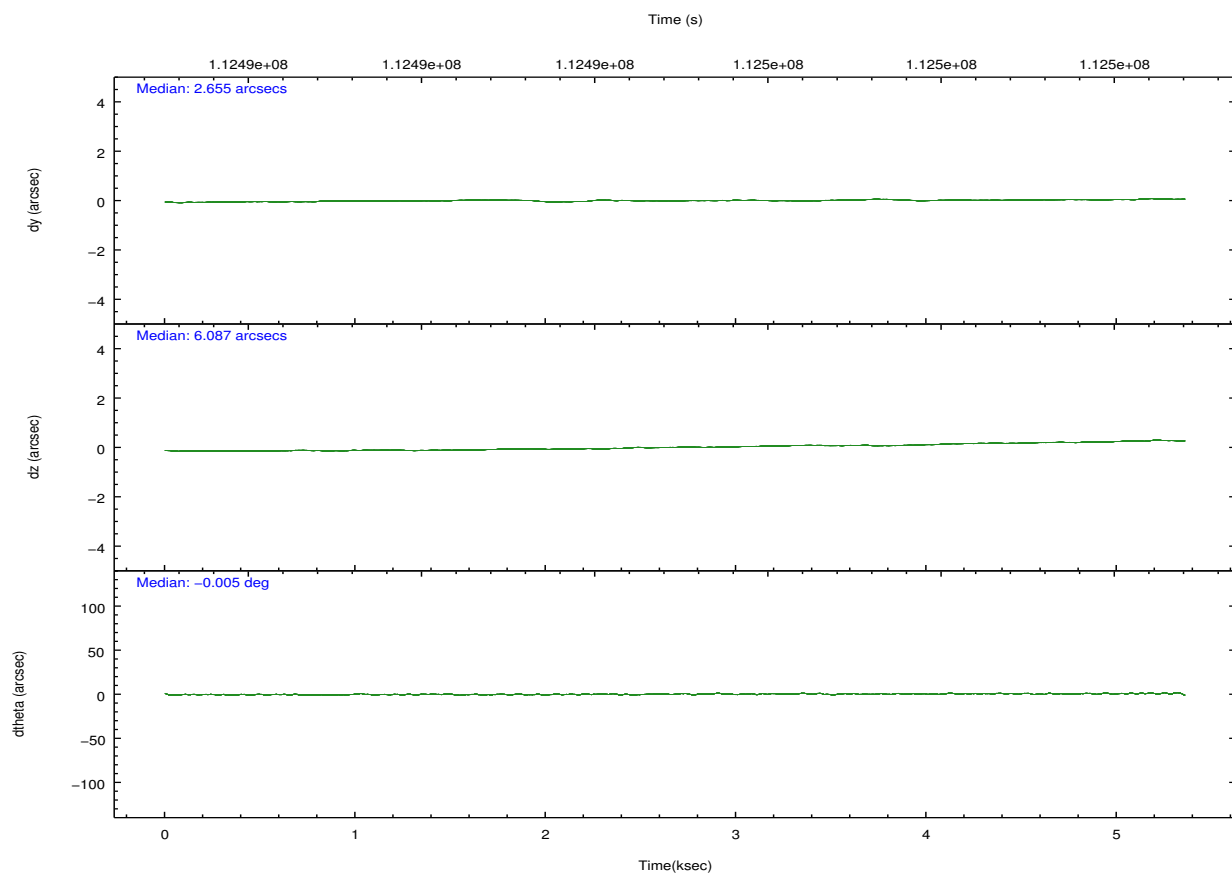
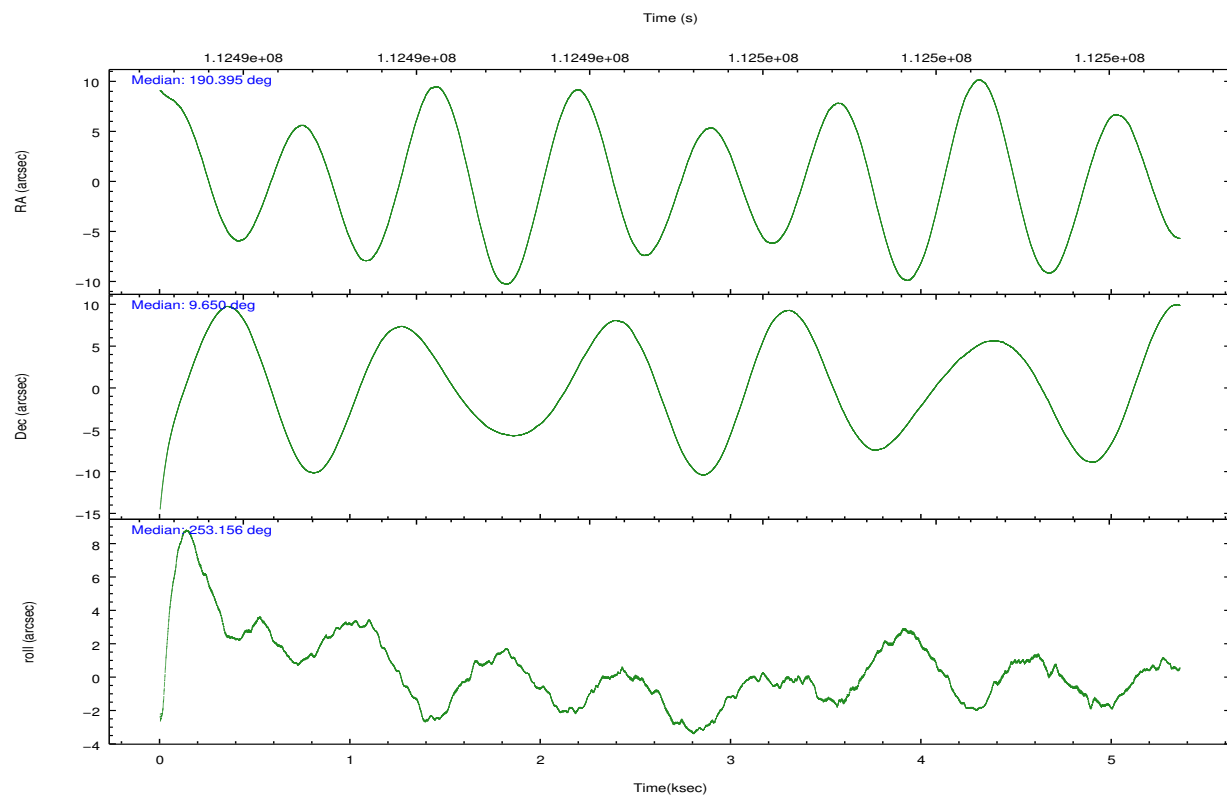
	ccd 2	ccd 3	ccd 5	ccd 6	ccd 7	ccd 8		ccd 2	ccd 3	ccd 5	ccd 6	ccd 7	ccd 8
level 1 events	34725	32726	50565	34848	43840	43517	grade 0 events	1682	1564	4322	1630	1756	2881
rejected events	30791	29032	26266	30877	25646	34652		4%	4%	8%	4%	4%	6%
rejected %	88%	88%	51%	88%	58%	79%	grade 1 events	23	24	229	19	43	29
								0%	0%	0%	0%	0%	0%
							grade 2 events	839	723	6449	784	3477	1806
								2%	2%	12%	2%	7%	4%
							grade 3 events	352	368	967	393	1706	1008
								1%	1%	1%	1%	3%	2%
							grade 4 events	376	374	998	408	1675	928
								1%	1%	1%	1%	3%	2%
							grade 5 events	1127	1263	3724	1483	4409	1878
								3%	3%	7%	4%	10%	4%
							grade 6 events	688	669	11583	760	9588	2244
								1%	2%	22%	2%	21%	5%
							grade 7 events	29638	27741	22293	29371	21186	32743
								85%	84%	44%	84%	48%	75%

2.2 Compared Parameters

Parameter	Planned	Actual	Parameter	Planned	Actual
Instrument	ACIS	ACIS	Obspar format version number	7	7
Detector	ACIS-235678	ACIS-235678	Obspar file type	PREDICTED	ACTUAL
Grating	NONE	NONE	Obspar update status	NONE	UPDATED
Data mode	FAINT	FAINT	Number of optional ACIS chips dropped	0	0
Observation mode	POINTING	POINTING	On-chip summing requested	N	N
[deg] Pointing RA	190.388482	190.3951222239265	Subarray requested	NONE	NONE
[deg] Pointing Dec	9.676303	9.649856067044336	Alternating exposures requested	N	N
[deg] Pointing Roll	253.005766	253.1612500921665	[s] Primary exposure time	0.000000	3.2
[mm] SIM focus pos	-0.684267	-0.6828225247311905			
[mm] SIM defocus	0	0.001444936568705701			
[mm] SIM translation stage pos	-190.132523	-190.1400660498719			
[mm] SIM translation stage offset	0	0.00754346686406393			
[s] Observation start time (MET)	112491944.184000	112490945.46611			
Observation start date	2001-07-25T23:44:40	2001-07-25T23:29:05			
[s] Observation end time (MET)	112497144.184000	112497607.45387			
Observation end date	2001-07-26T01:11:20	2001-07-26T01:20:07			
Read mode	TIMED	TIMED			

2.3 Aspect



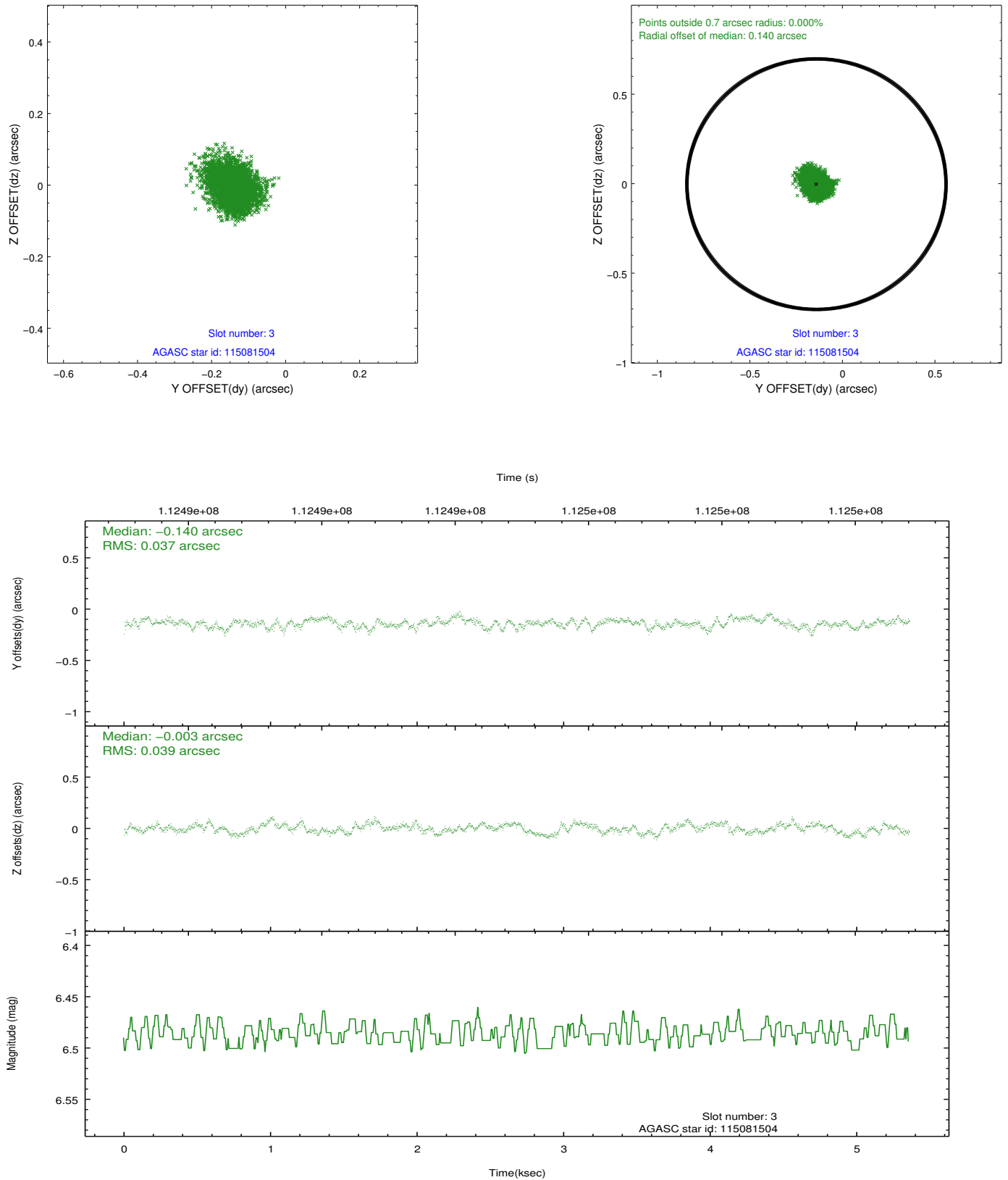


Slot Statistics

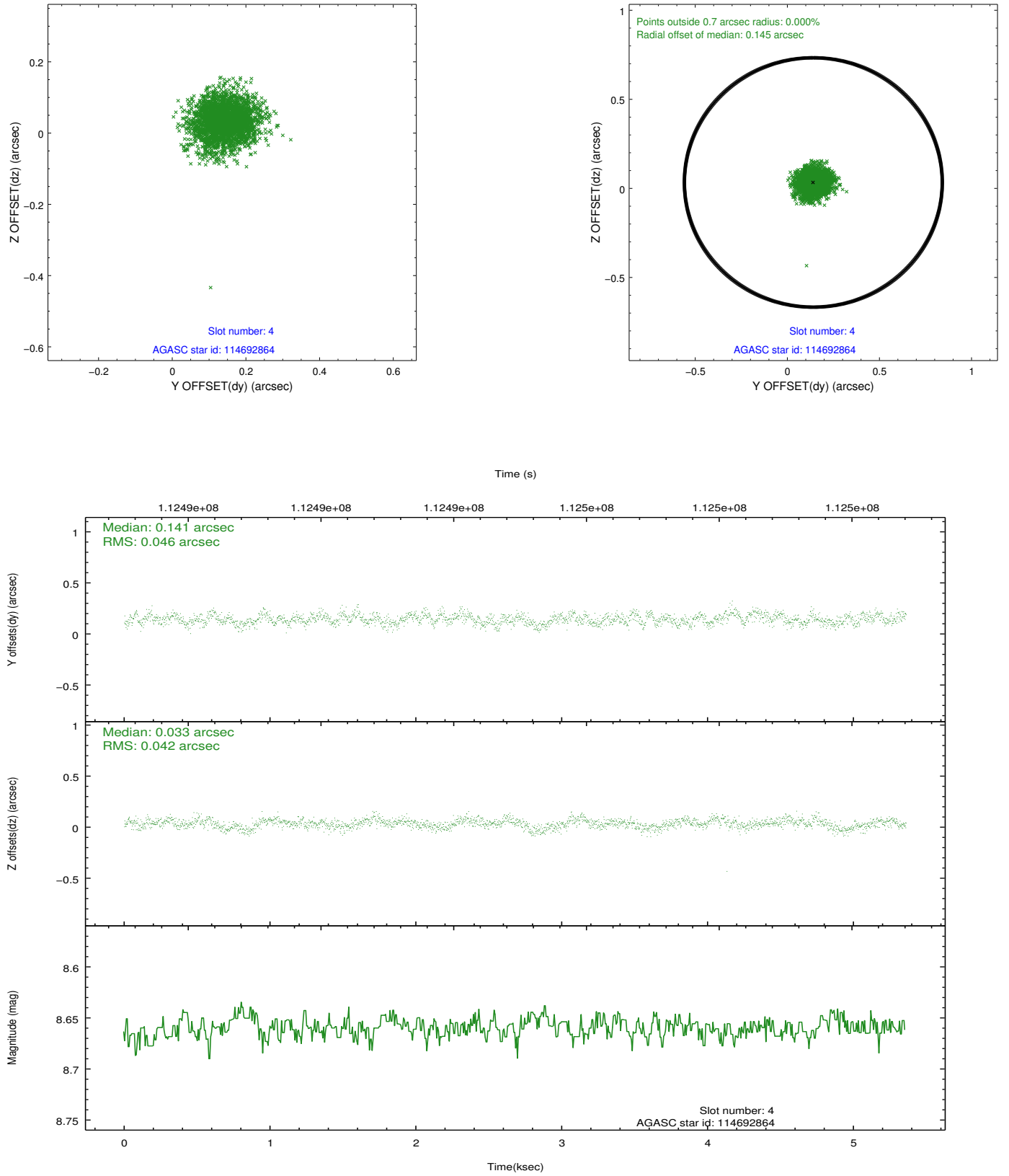
slot	status	id	mag	n_pts	med_dy	med_dz	dr1	dr2	ra	dec	mean_y	mean_z
0	FID	ACIS-S-2	7.11	1307	-0.024	0.013	0.008	0.012	0.000000	0.000000	-755.27	-1727.25
1	FID	ACIS-S-4	7.20	1307	-0.054	0.008	0.007	0.014	0.000000	0.000000	2157.43	180.13
2	FID	ACIS-S-5	7.24	1307	0.046	-0.012	0.007	0.012	0.000000	0.000000	-1806.63	174.98
3	GUIDE	115081504	6.49	2615	-0.140	-0.003	0.059	0.090	190.816286	10.100683	-1905.29	1003.89
4	GUIDE	114692864	8.66	2615	0.141	0.033	0.066	0.106	190.502418	9.003046	2198.79	1097.25
5	GUIDE	115087240	9.24	2612	-0.277	-0.097	0.112	0.179	189.980657	10.358703	-1927.40	-2098.57
6	GUIDE	114692672	9.78	2613	0.242	0.095	0.113	0.182	190.090346	9.130472	2188.08	-439.03
7	GUIDE	114690280	10.11	2610	0.033	-0.026	0.122	0.195	190.625397	9.900527	-1016.99	568.03

2.4 Star Slots

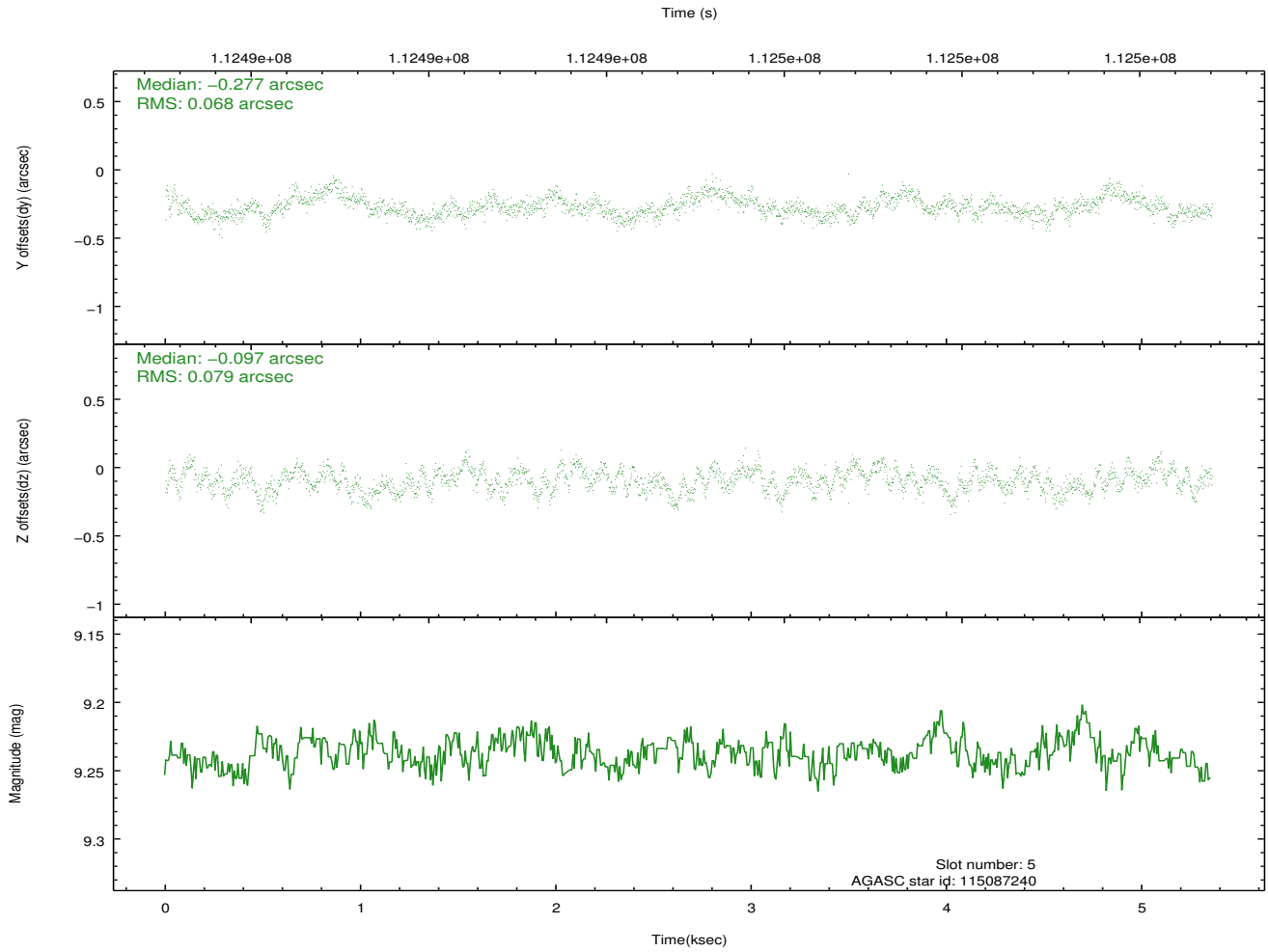
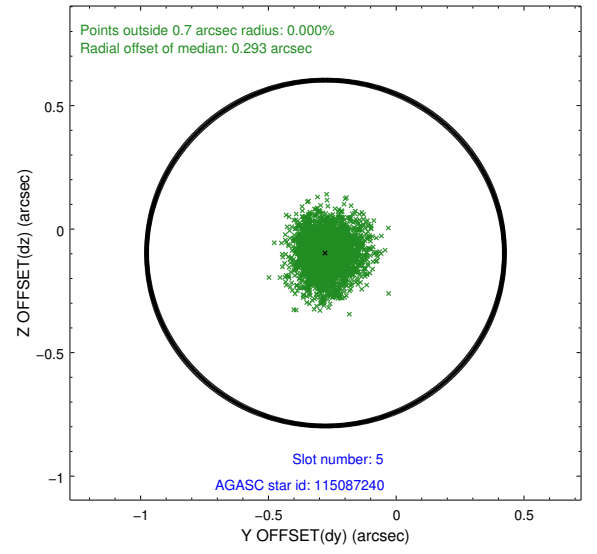
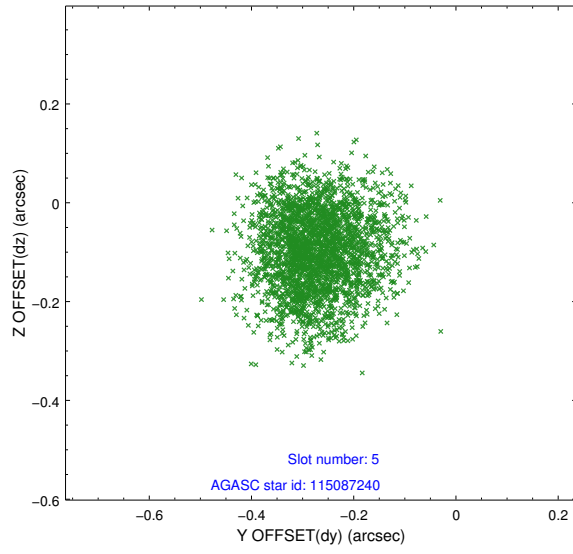
2.4.1 Slot 3



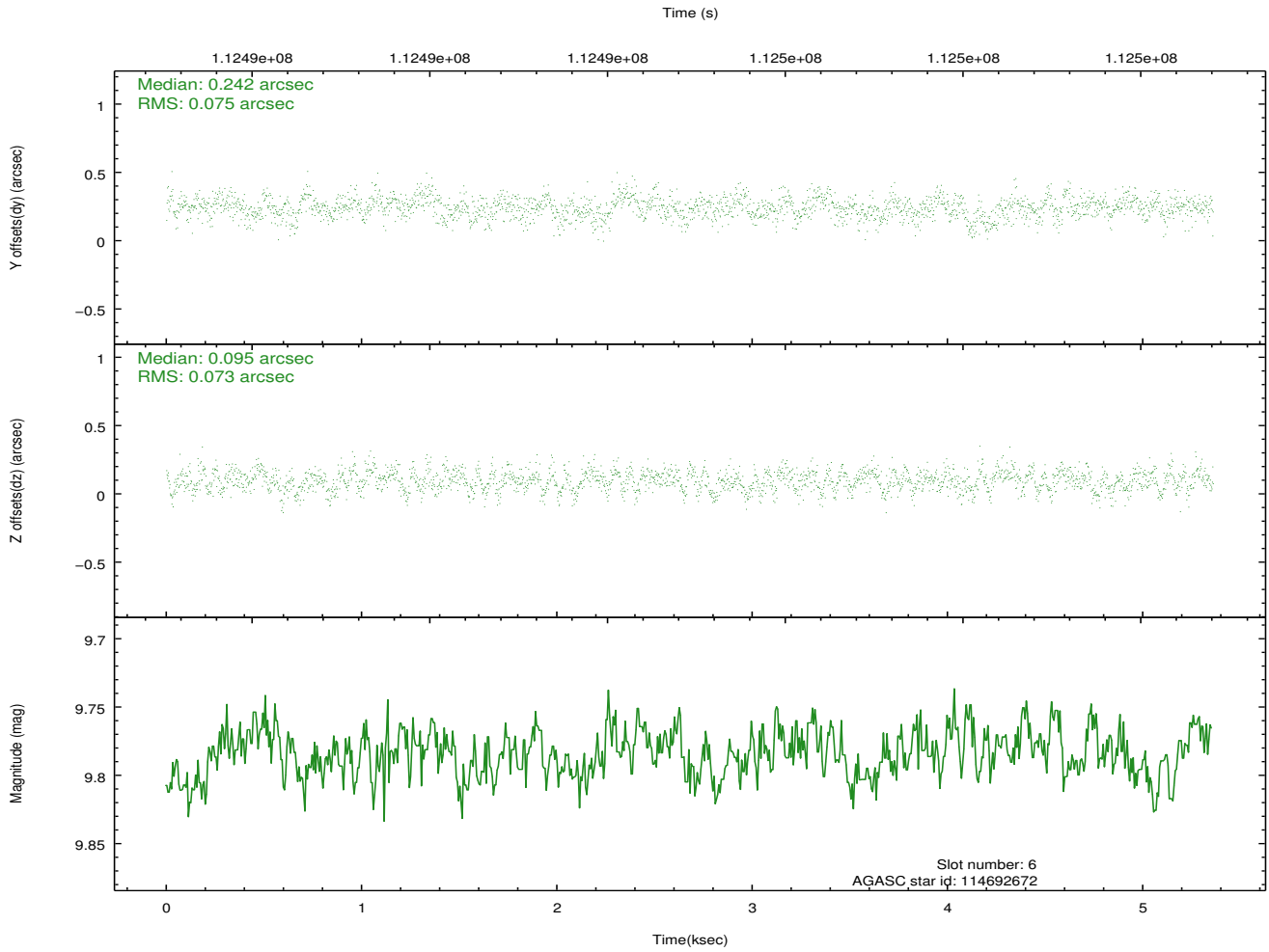
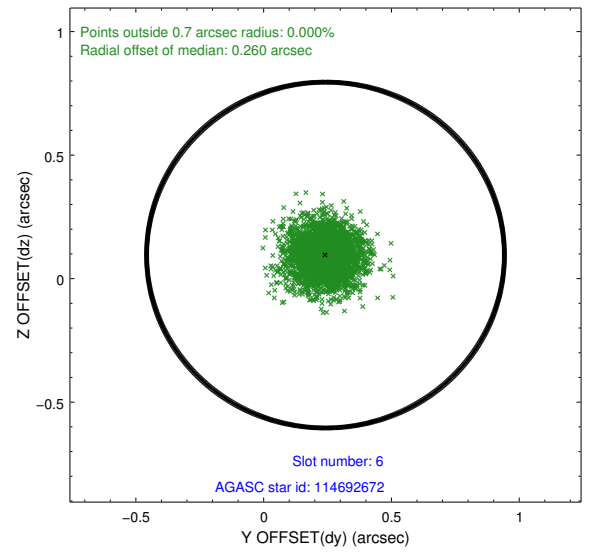
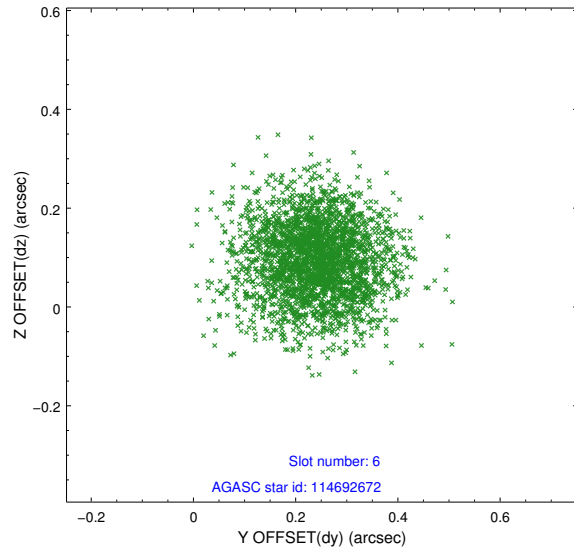
2.4.2 Slot 4



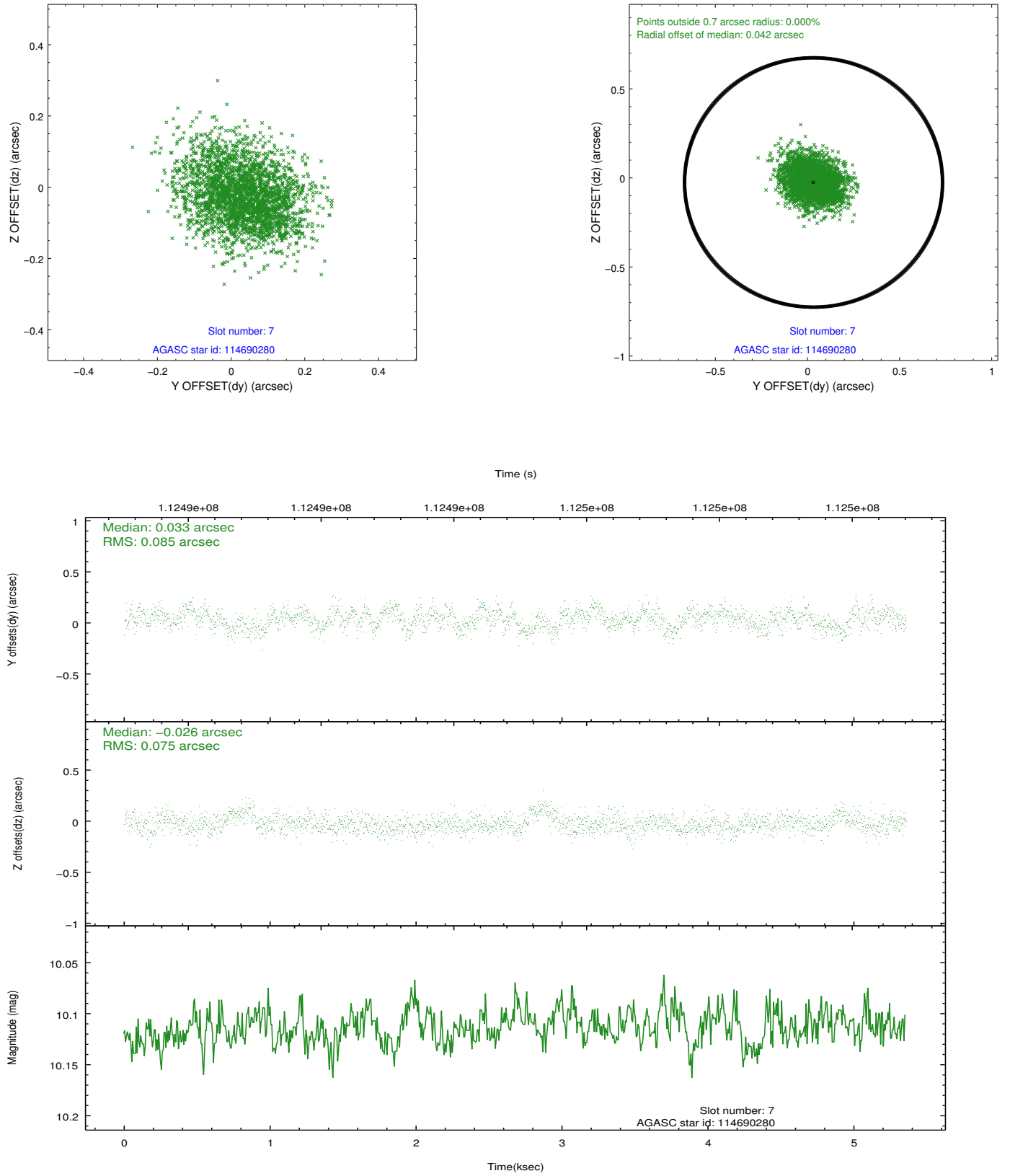
2.4.3 Slot 5



2.4.4 Slot 6

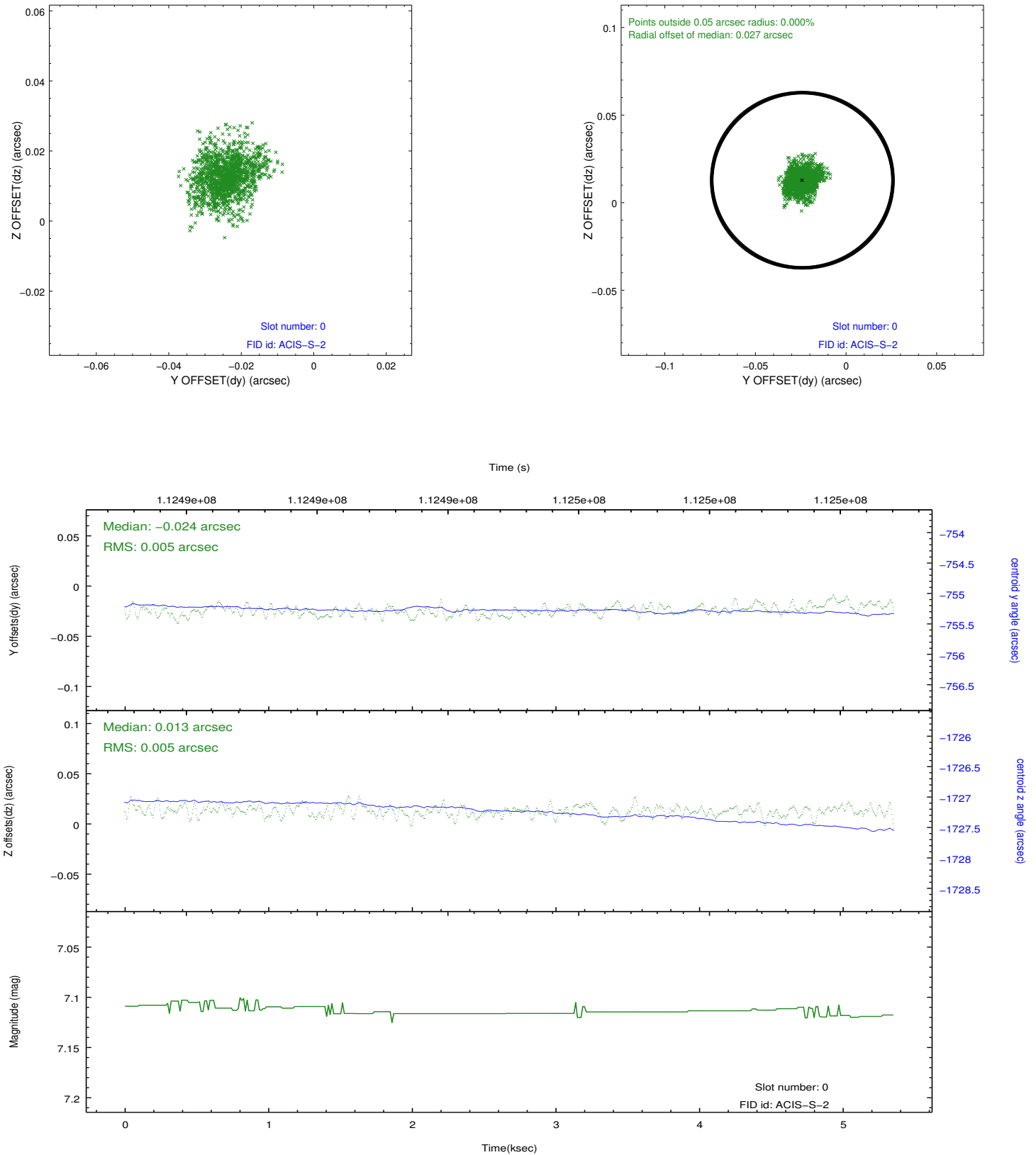


2.4.5 Slot 7

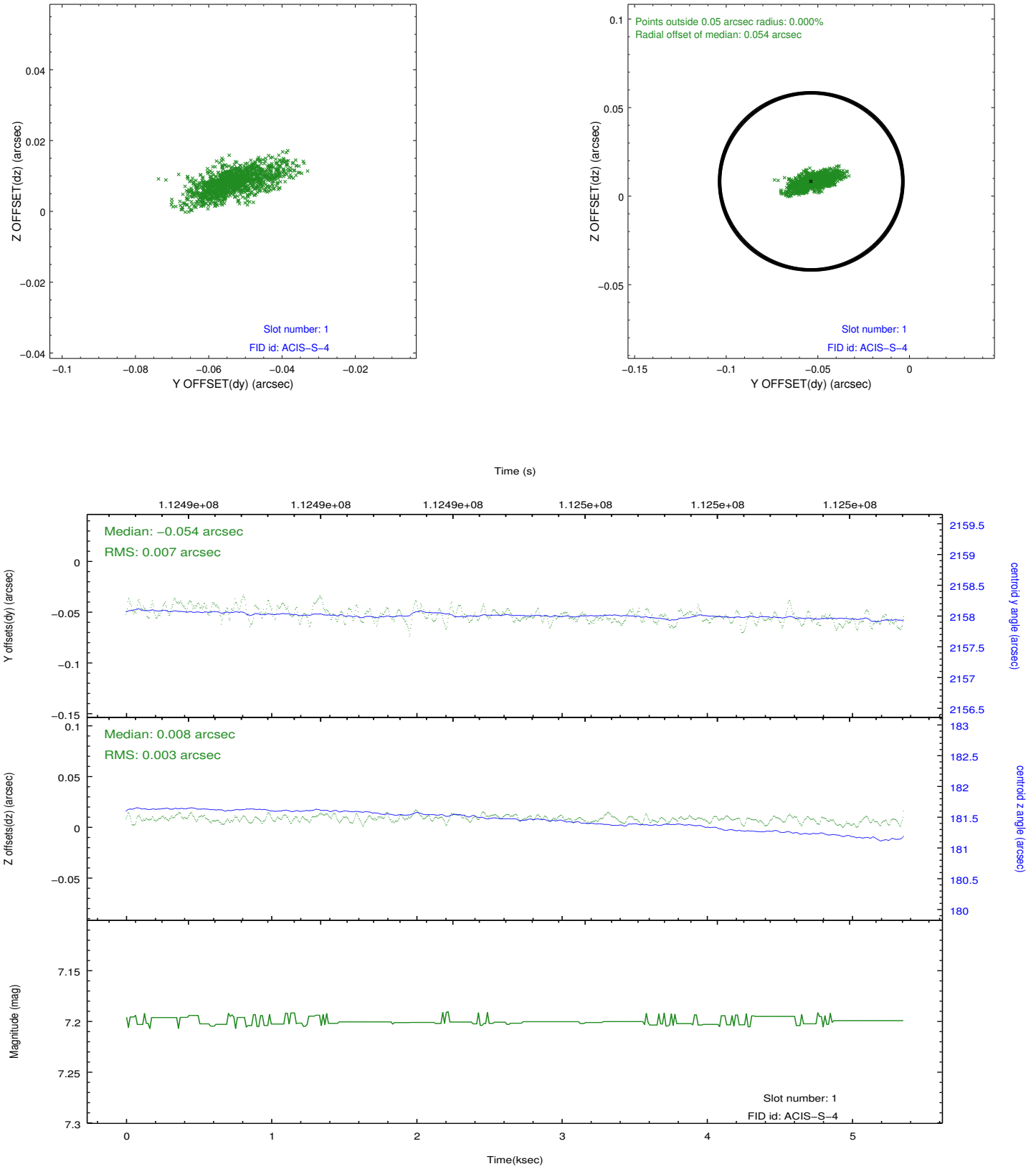


2.5 FID Slots

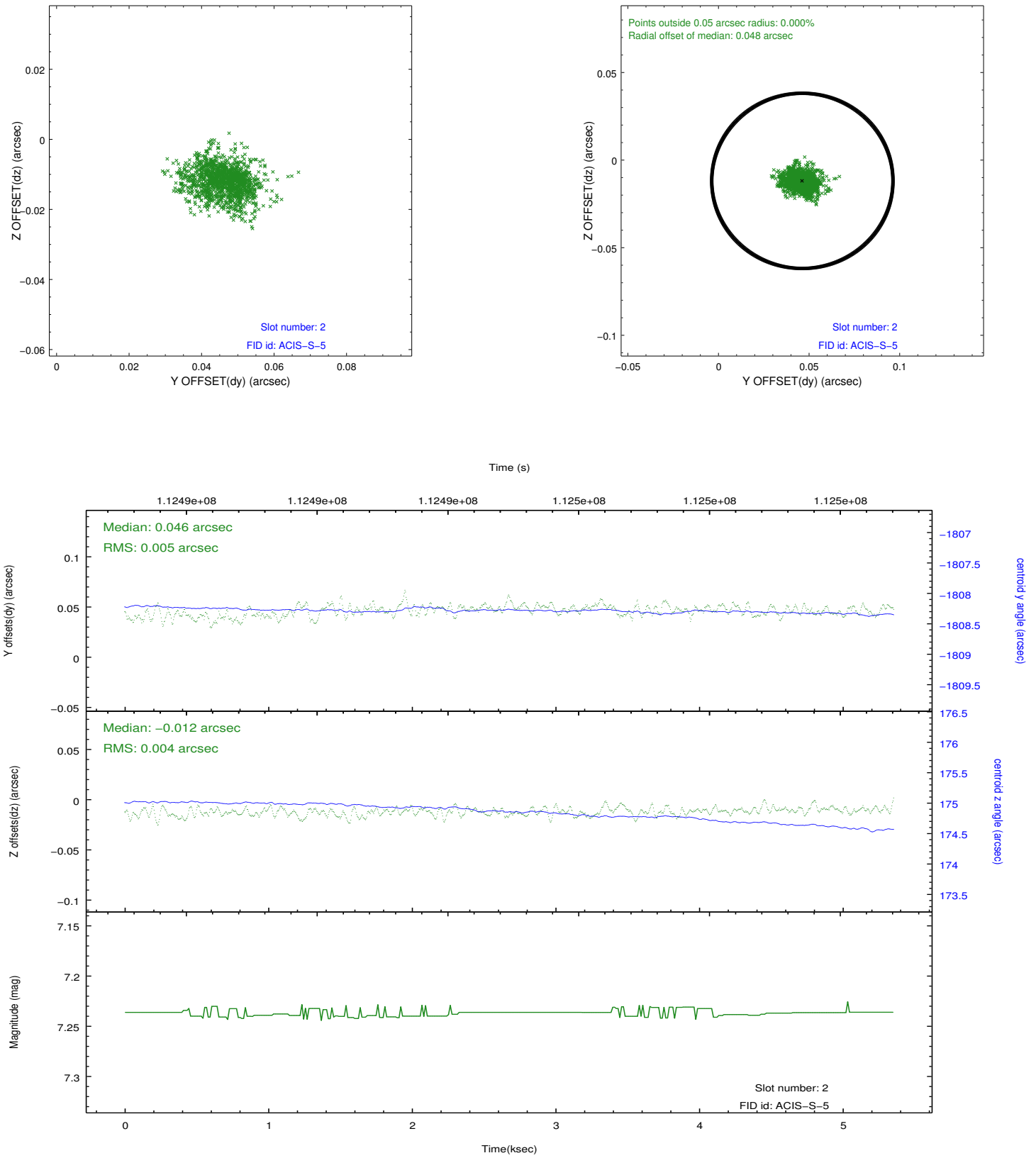
2.5.1 Slot 0



2.5.2 Slot 1



2.5.3 Slot 2



A Summary

A.1 Status

V&V Scientist	Jen Lauer
V&V Date (YYYY-MM-DD)	2012.09.24
V&V Edition	1
V&V Disposition and Status	OK
V&V Charge Time	5.225

A.2 Comments