

V&V Reference Report

L2 ASCDS Version : 7.6.9

Observation 2109 - L2 Version 001
Chandra X-Ray Center

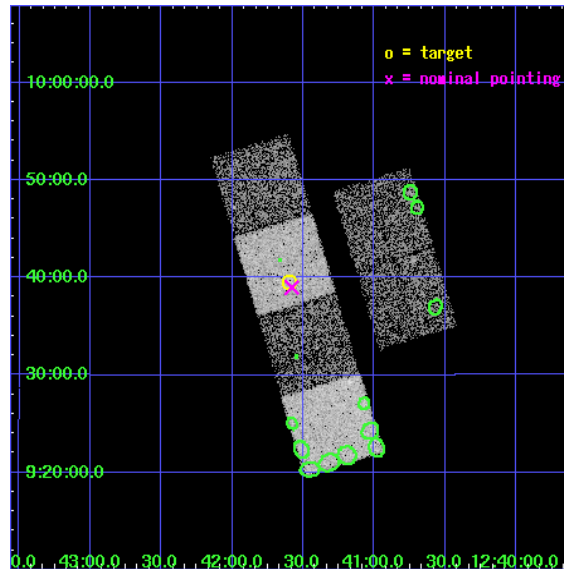
L2 Processing Date : Dec 15 2006

Contents

1	Front	2
2	OBI	3
2.1	OBI	3
2.1.1	Images	3
2.1.2	Bias	3
2.1.3	Parameters	4
2.1.4	Events	4
2.2	Compared Parameters	5
2.3	Aspect	6
2.4	Star Slots	9
2.4.1	Slot 3	9
2.4.2	Slot 4	10
2.4.3	Slot 5	11
2.4.4	Slot 6	12
2.4.5	Slot 7	13
2.5	FID Slots	14
2.5.1	Slot 0	14
2.5.2	Slot 1	15
2.5.3	Slot 2	16
3	Point Sources	17
A	Summary	18
A.1	Status	18
A.2	Comments	18

1 Front

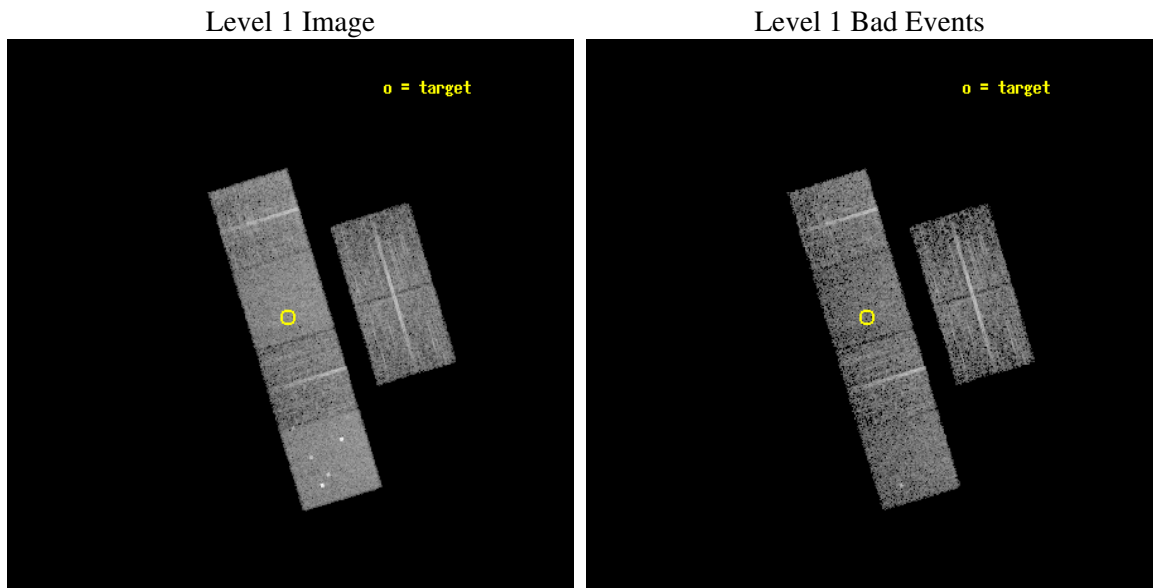
seq_num	700299
obs_id	2109
title	PUBLIC OBSERVATIONS OF A WELL-DEFINED SAMPLE OF BAL QSOS FROM THE LARGE BRIGHT QUASAR SURVEY: REMOVING THE BARRIERS
observer	Prof. William Brandt
object	LBQS 1239+0955
dtcycle	0
cycle	P
ra_targ	190.399583
dec_targ	9.6585
ra_nom	190.39512222393
dec_nom	9.6498560670444
roll_nom	253.16125009217
revision	2
ontime	5222.4000048637
livetime	5156.2708314504
ontime2	5222.4000048637
ontime3	5222.4000048637
ontime5	5222.4000048637
ontime6	5222.4000048637
ontime7	5222.4000048637
ontime8	5222.4000048637
l2events	50417



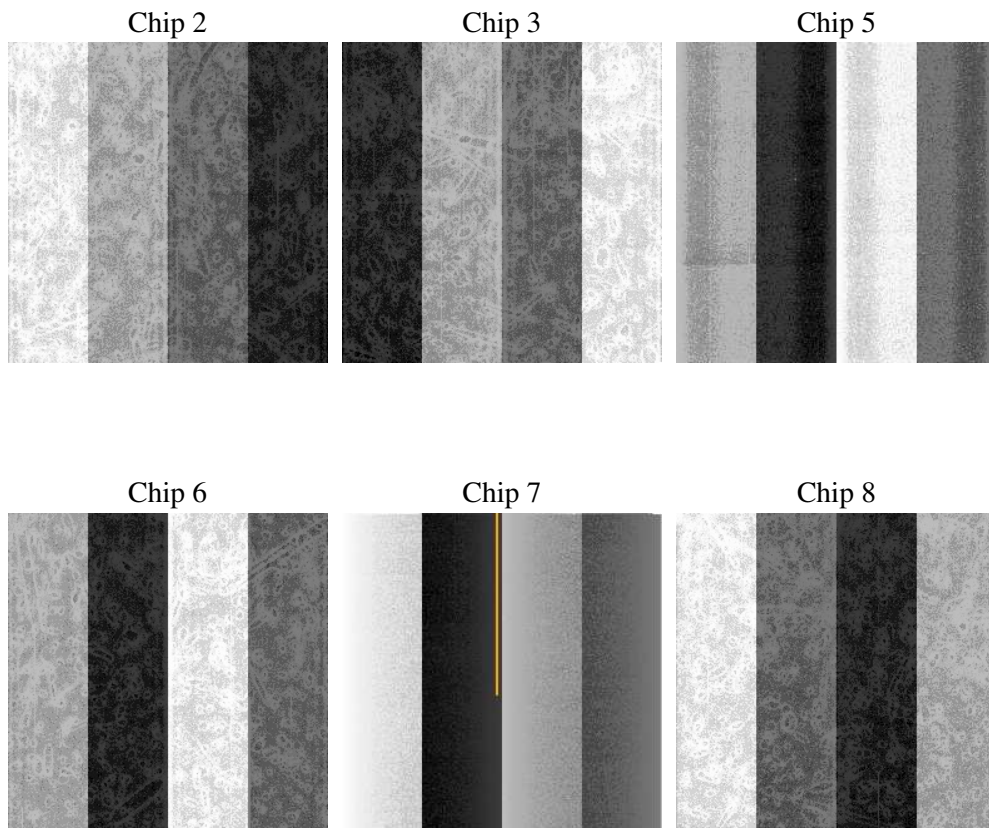
2 OBI

2.1 OBI

2.1.1 Images



2.1.2 Bias



2.1.3 Parameters

obi_num	2
ascdsver	7.6.9
caldsver	3.2.4
date	2006-12-15T17:17:55
revision	2

sched_exp_time	5200.000000
ontime	5227.7305254489
ontime2	5227.7305254489
ontime3	5227.7304955125
ontime5	5227.7305254489
ontime6	5227.7305254489
ontime7	5227.7305254489
ontime8	5227.7304955125
l1events	240221

2.1.4 Events

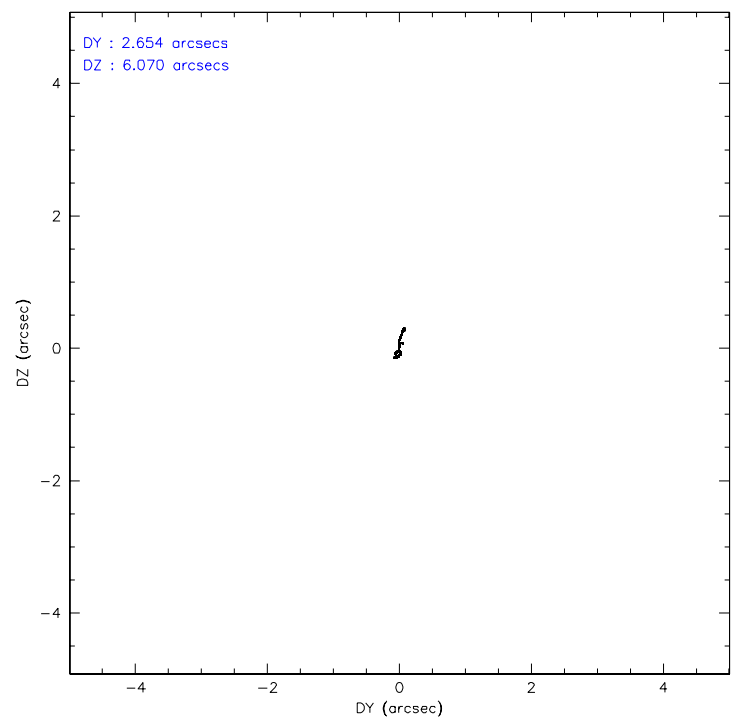
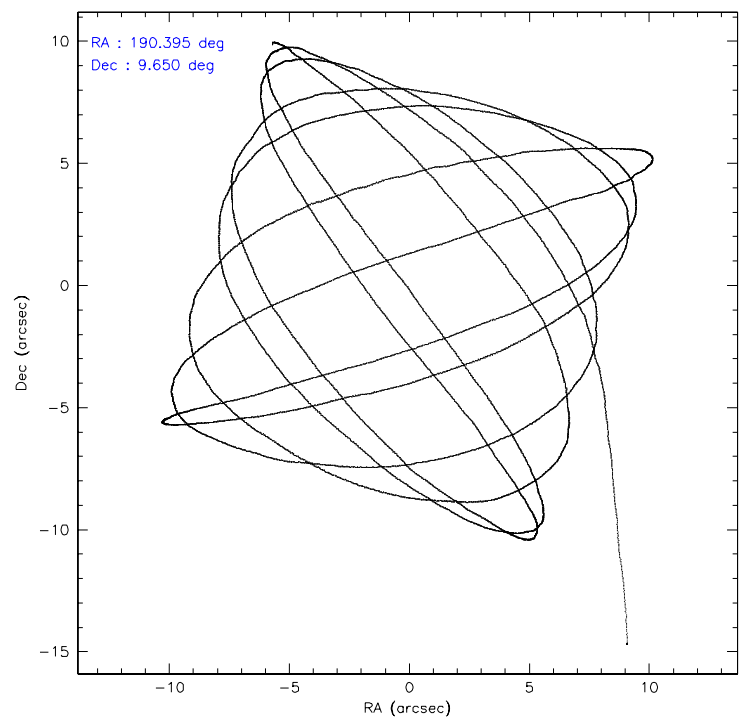
	ccd 2	ccd 3	ccd 5	ccd 6	ccd 7	ccd 8
level 1 events	34725	32726	50565	34848	43840	43517
rejected events	30796	29034	27103	30879	26999	34655
rejected %	88%	88%	53%	88%	61%	79%

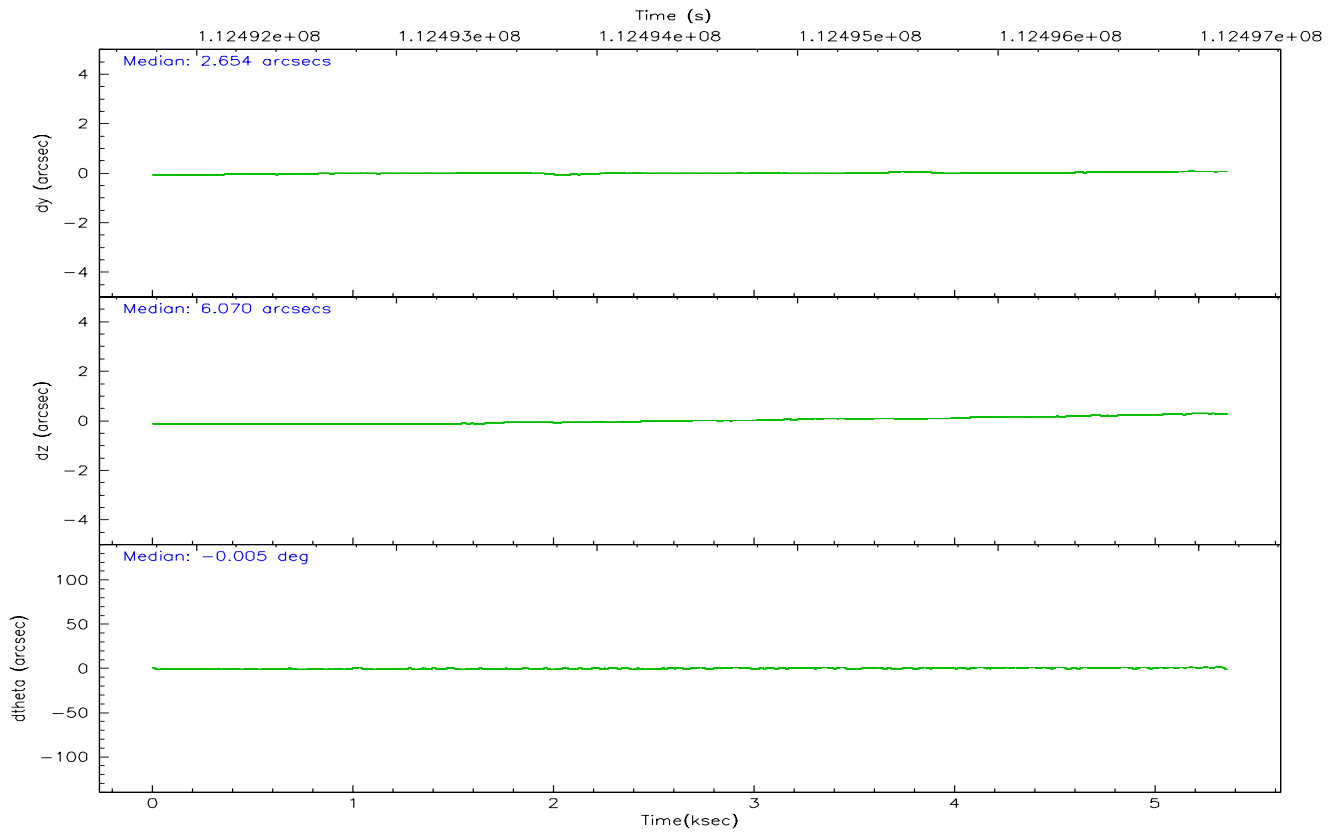
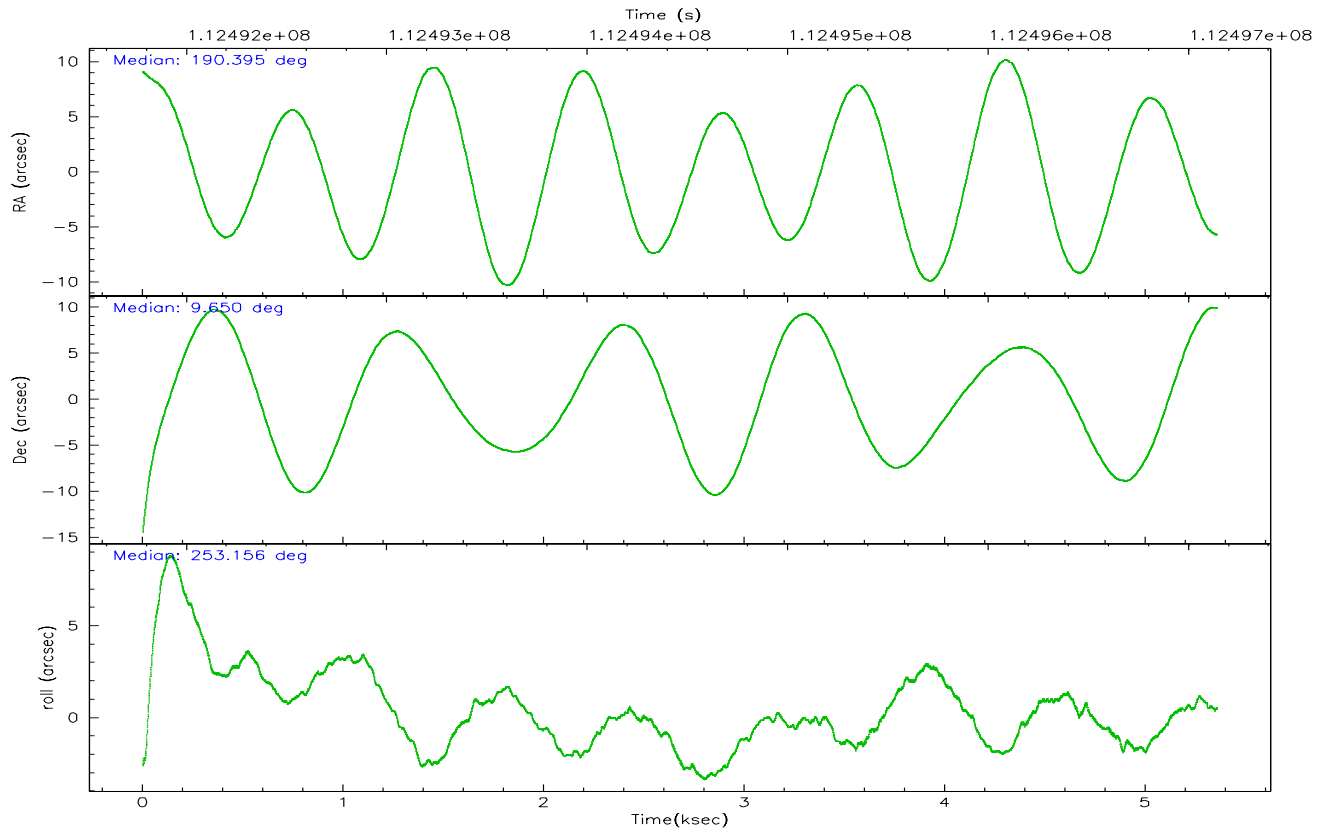
	ccd 2	ccd 3	ccd 5	ccd 6	ccd 7	ccd 8
grade 0 events	1682	1564	3715	1630	1103	2881
	4%	4%	7%	4%	2%	6%
grade 1 events	23	24	209	19	24	29
	0%	0%	0%	0%	0%	0%
grade 2 events	839	723	6592	784	3988	1806
	2%	2%	13%	2%	9%	4%
grade 3 events	352	368	495	393	947	1008
	1%	1%	0%	1%	2%	2%
grade 4 events	376	374	546	408	953	928
	1%	1%	1%	1%	2%	2%
grade 5 events	1127	1263	2355	1484	3153	1878
	3%	3%	4%	4%	7%	4%
grade 6 events	688	669	12154	760	9862	2244
	1%	2%	24%	2%	22%	5%
grade 7 events	29638	27741	24499	29370	23810	32743
	85%	84%	48%	84%	54%	75%

2.2 Compared Parameters

Parameter	Planned	Actual	Parameter	Planned	Actual
Instrument	ACIS	ACIS	Obspar format version number	6	6
Detector	ACIS-235678	ACIS-235678	Obspar file type	PREDICTED	ACTUAL
Grating	NONE	NONE	Obspar update status	NONE	UPDATED
Data mode	FAINT	FAINT	Number of optional ACIS chips dropped	0	0
Observation mode	POINTING	POINTING	On-chip summing requested	N	N
Pointing RA	190.388482	190.395122239266	Subarray requested	NONE	NONE
Pointing Dec	9.676303	9.649856067044425	Alternating exposures requested	N	N
Pointing Roll	253.005766	253.1612500921664	Primary exposure time	0.000000	3.2
SIM focus pos (mm)	-0.684267	-0.6828225247311905			
SIM defocus (mm)	0	0.001444936568705701			
SIM translation stage pos (mm)	-190.132523	-190.1400660498719			
SIM translation stage offset (mm)	0	0.00754346686406393			
Observation start time	112491944.184000	112490945.46611			
Observation start date	2001-07-25T23:44:40	2001-07-25T23:29:05			
Observation end time	112497144.184000	112497607.45387			
Observation end date	2001-07-26T01:11:20	2001-07-26T01:20:07			
Read mode	TIMED	TIMED			

2.3 Aspect



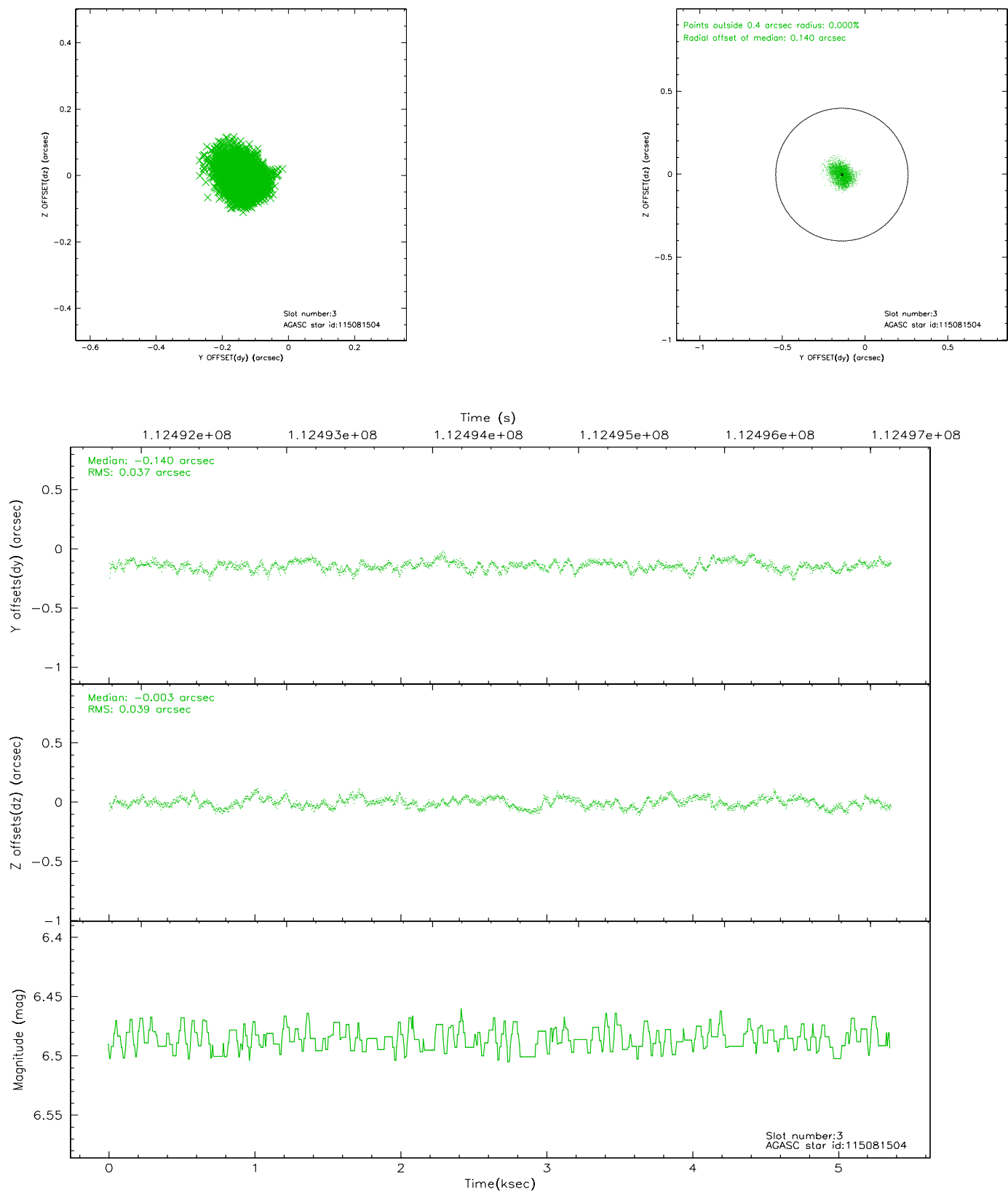


Slot Statistics

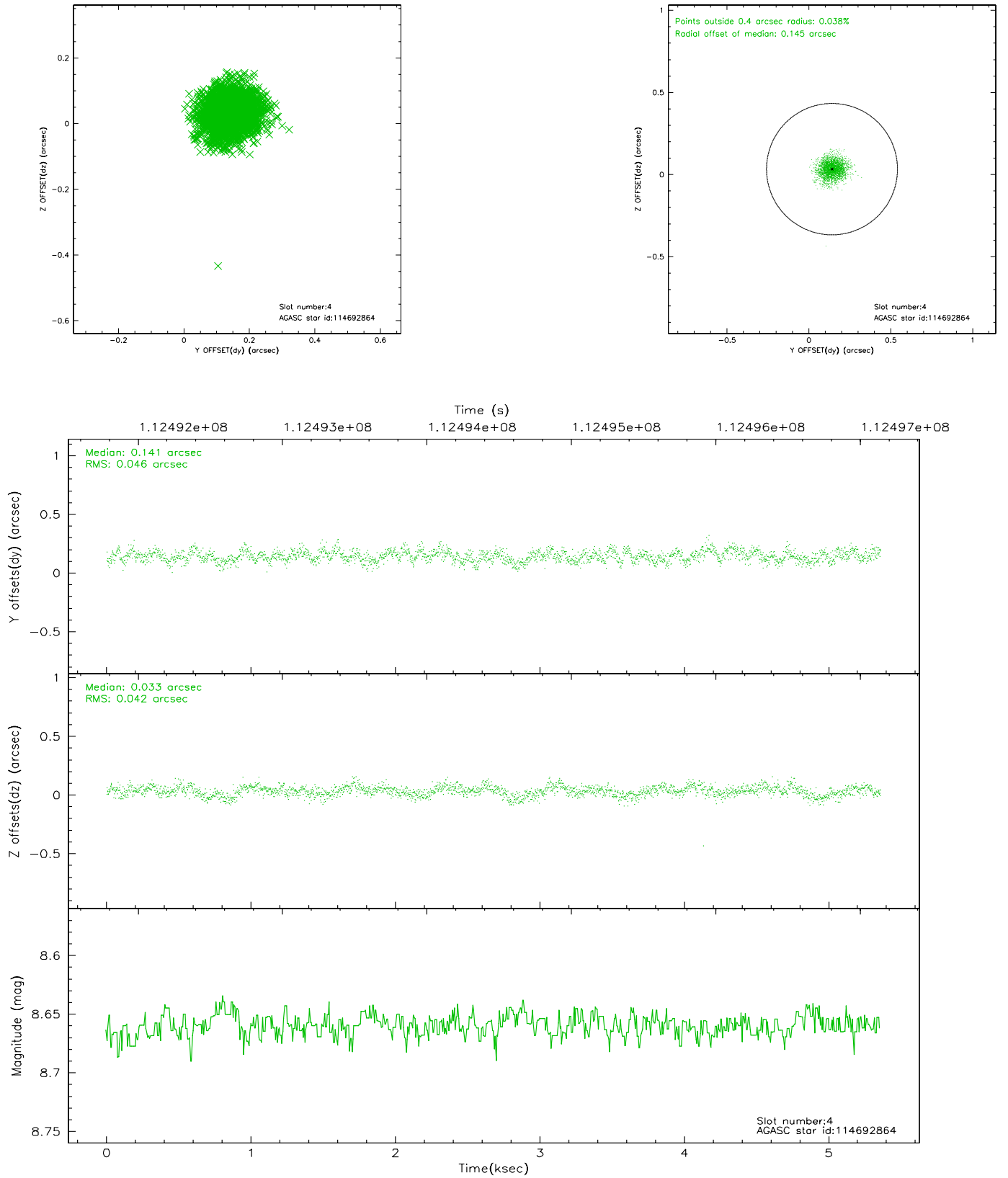
slot	status	id	mag	n_pts	med_dy	med_dz	dr1	dr2	ra	dec	mean_y	mean_z
0	FID	ACIS-S-2	7.11	1307	-0.013	0.036	0.008	0.013	0.000000	0.000000	-755.26	-1727.21
1	FID	ACIS-S-4	7.20	1307	-0.096	-0.004	0.006	0.012	0.000000	0.000000	2157.39	180.13
2	FID	ACIS-S-5	7.24	1307	0.077	-0.023	0.007	0.011	0.000000	0.000000	-1806.60	174.99
3	GUIDE	115081504	6.49	2615	-0.140	-0.003	0.059	0.090	190.816286	10.100683	-1905.29	1003.89
4	GUIDE	114692864	8.66	2615	0.141	0.033	0.066	0.106	190.502418	9.003046	2198.79	1097.25
5	GUIDE	115087240	9.24	2612	-0.277	-0.097	0.112	0.179	189.980657	10.358703	-1927.40	-2098.57
6	GUIDE	114692672	9.78	2613	0.242	0.095	0.113	0.182	190.090346	9.130472	2188.08	-439.03
7	GUIDE	114690280	10.11	2610	0.033	-0.026	0.122	0.195	190.625397	9.900527	-1016.99	568.03

2.4 Star Slots

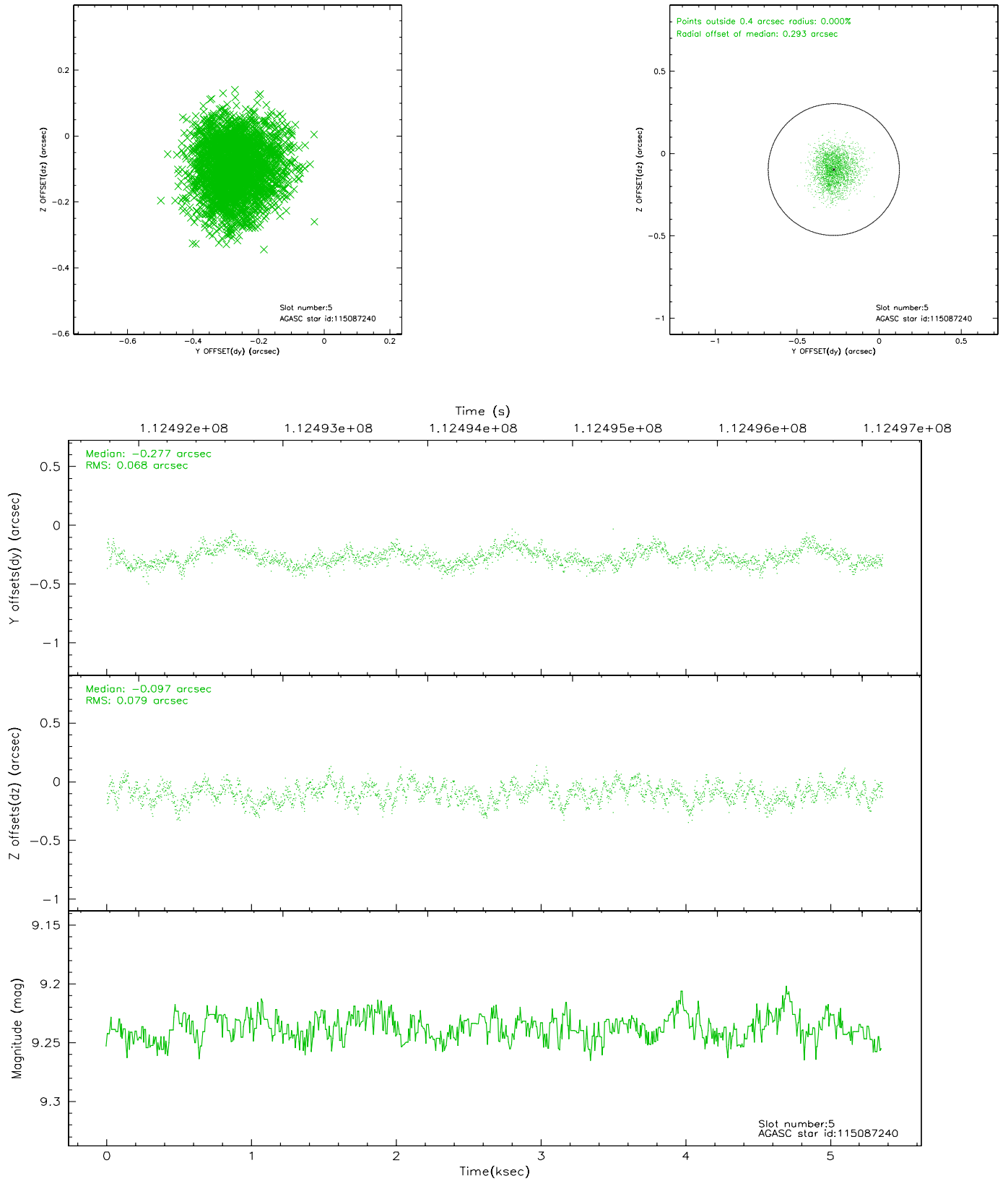
2.4.1 Slot 3



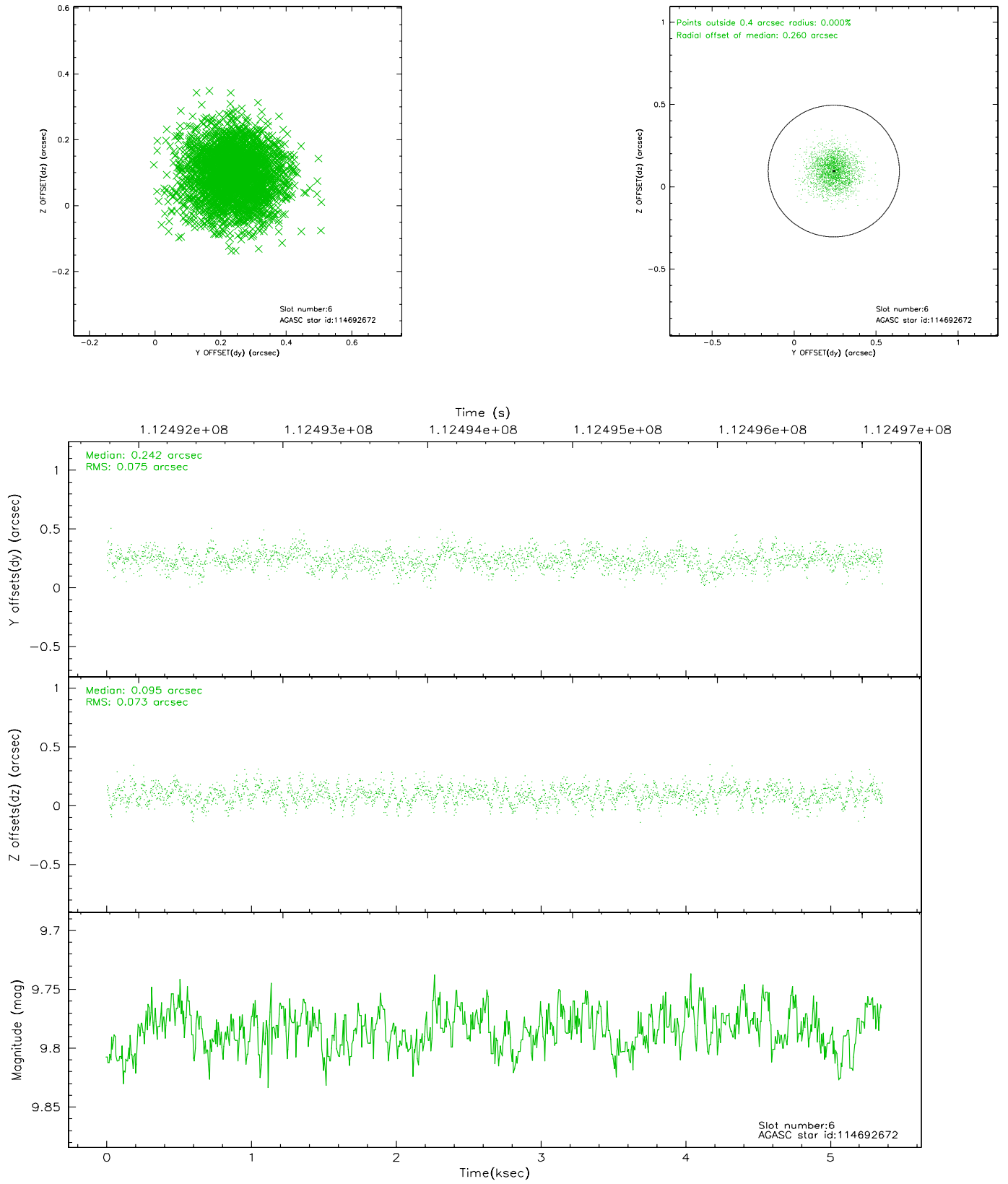
2.4.2 Slot 4



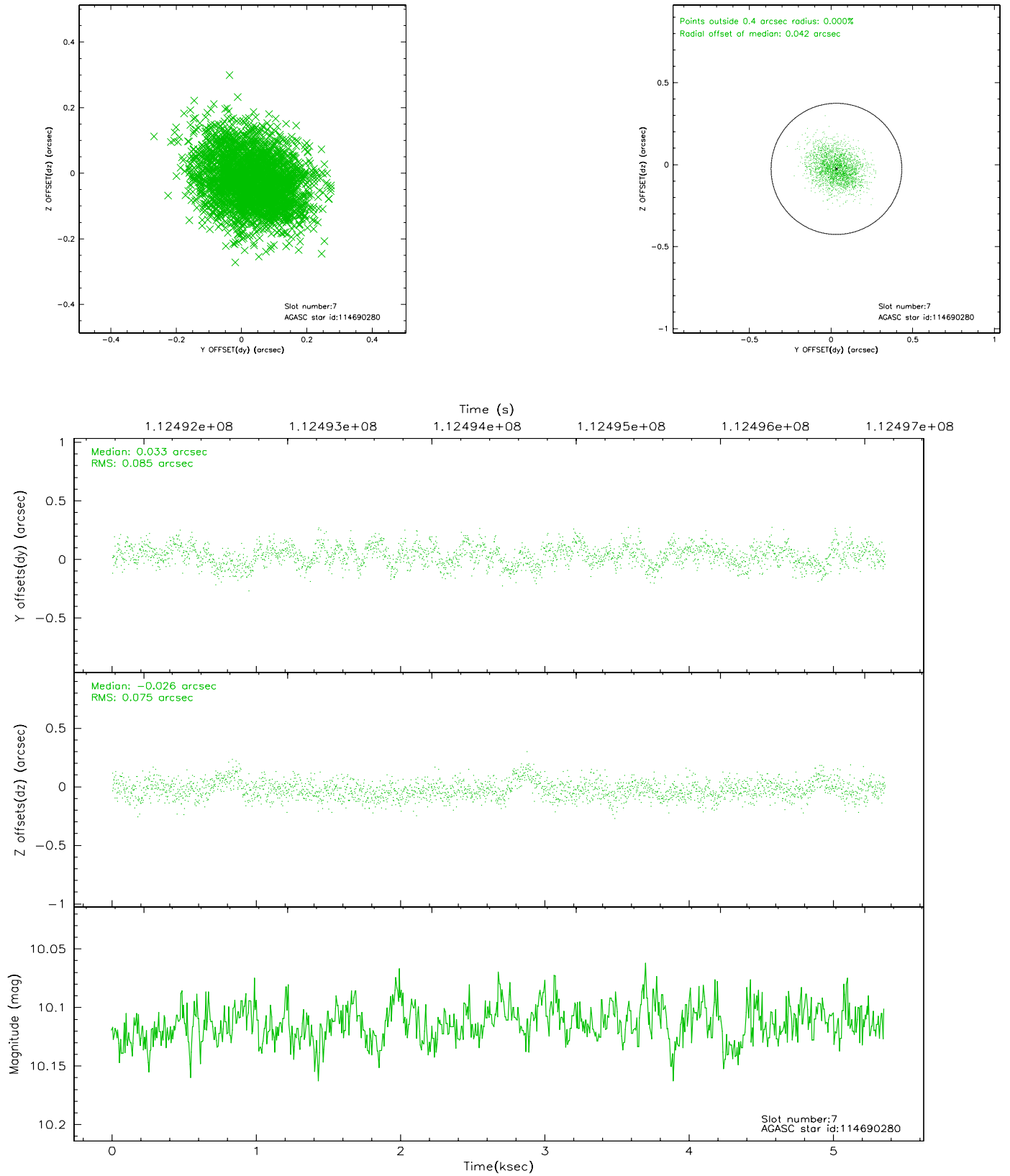
2.4.3 Slot 5



2.4.4 Slot 6

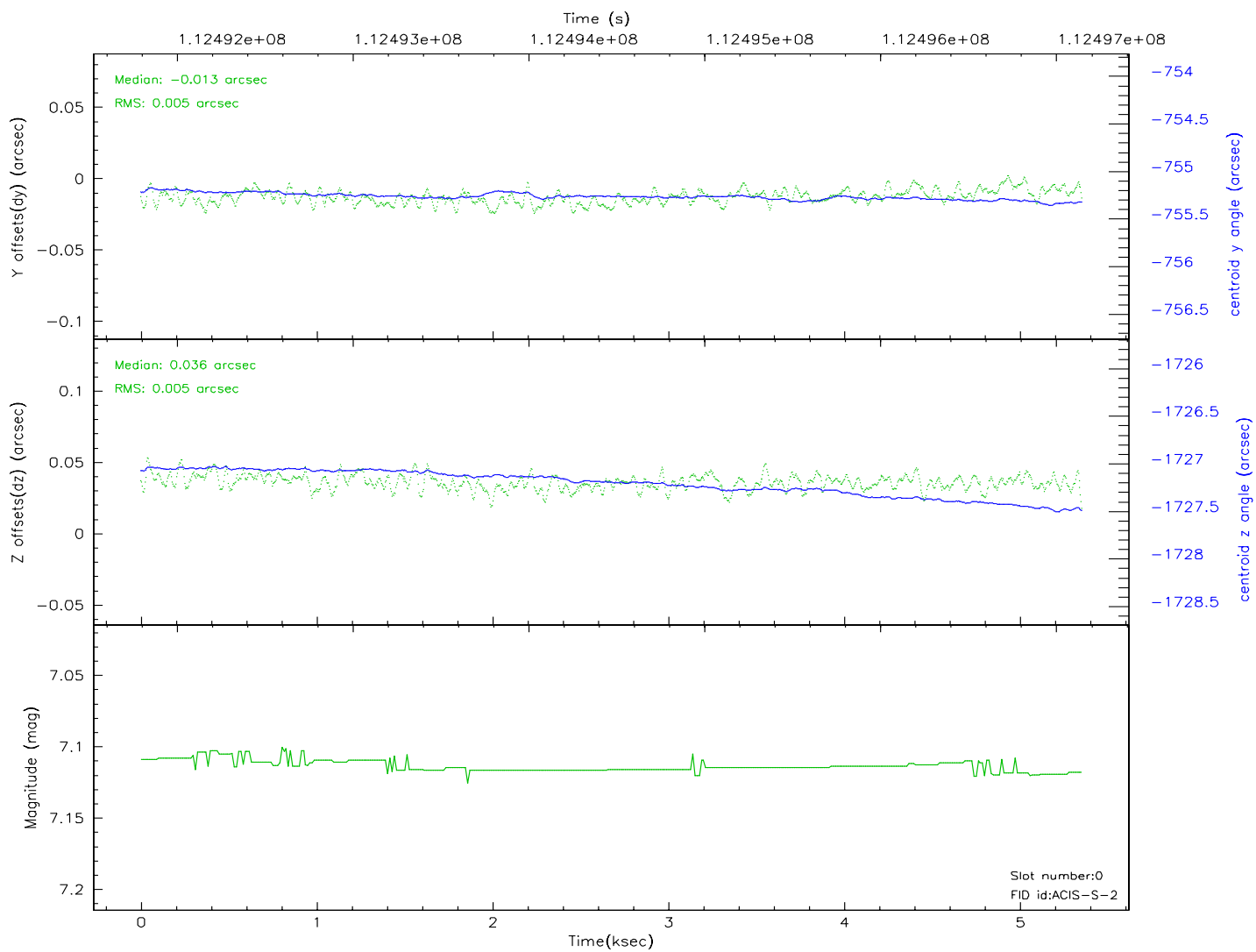
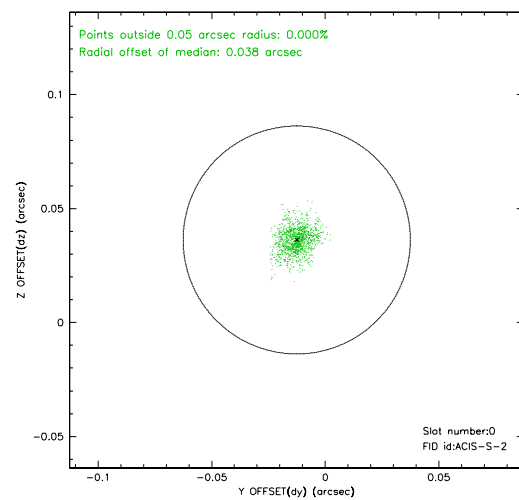
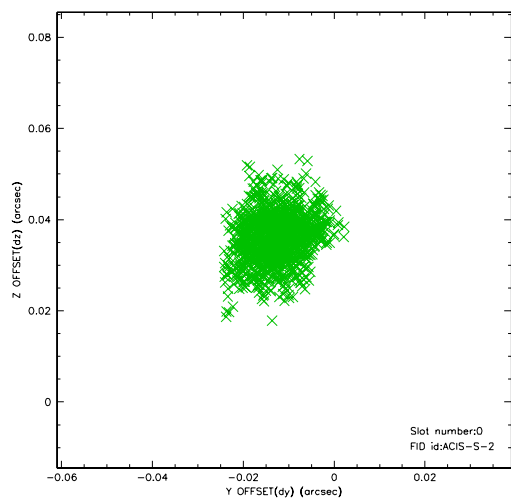


2.4.5 Slot 7

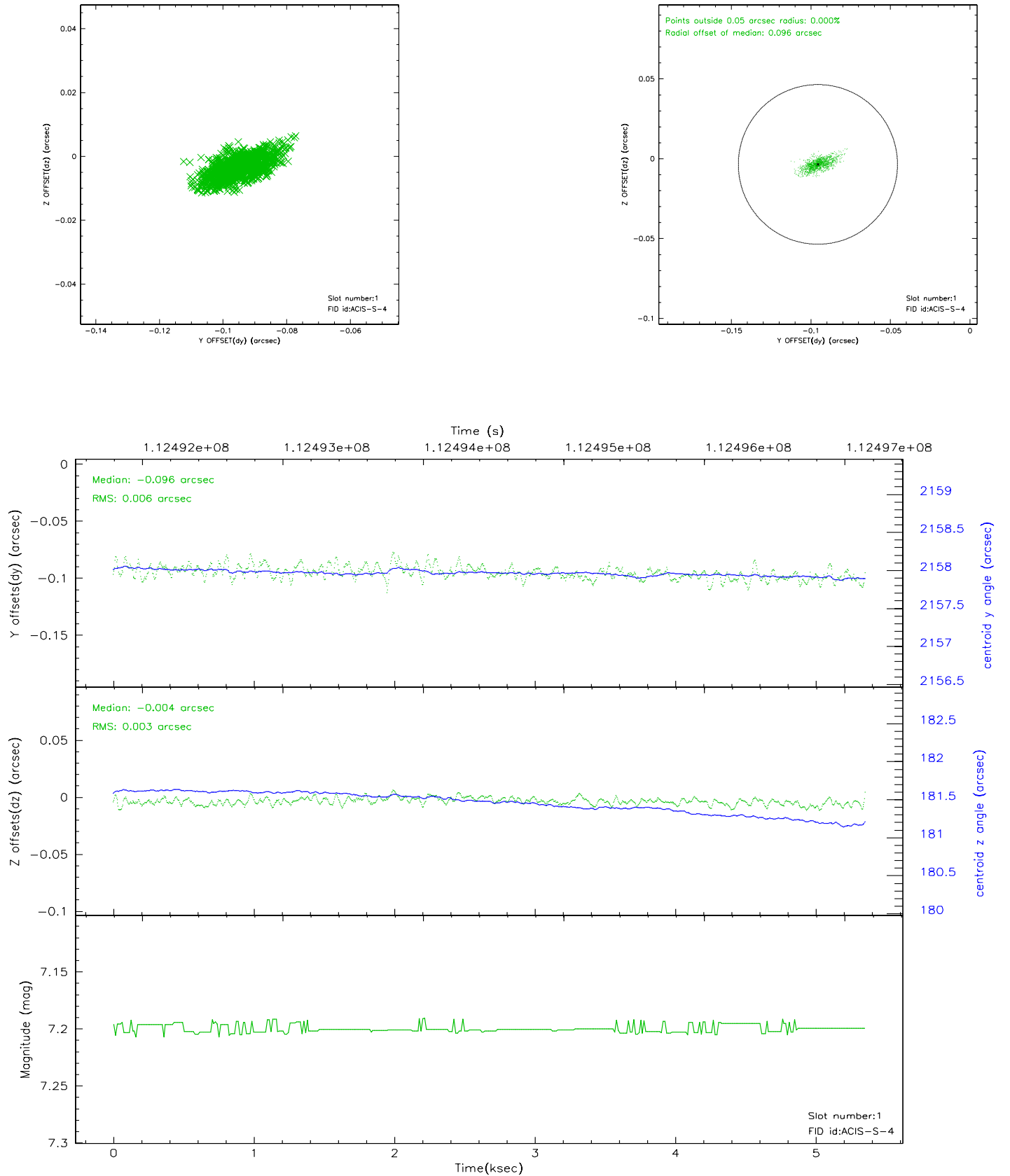


2.5 FID Slots

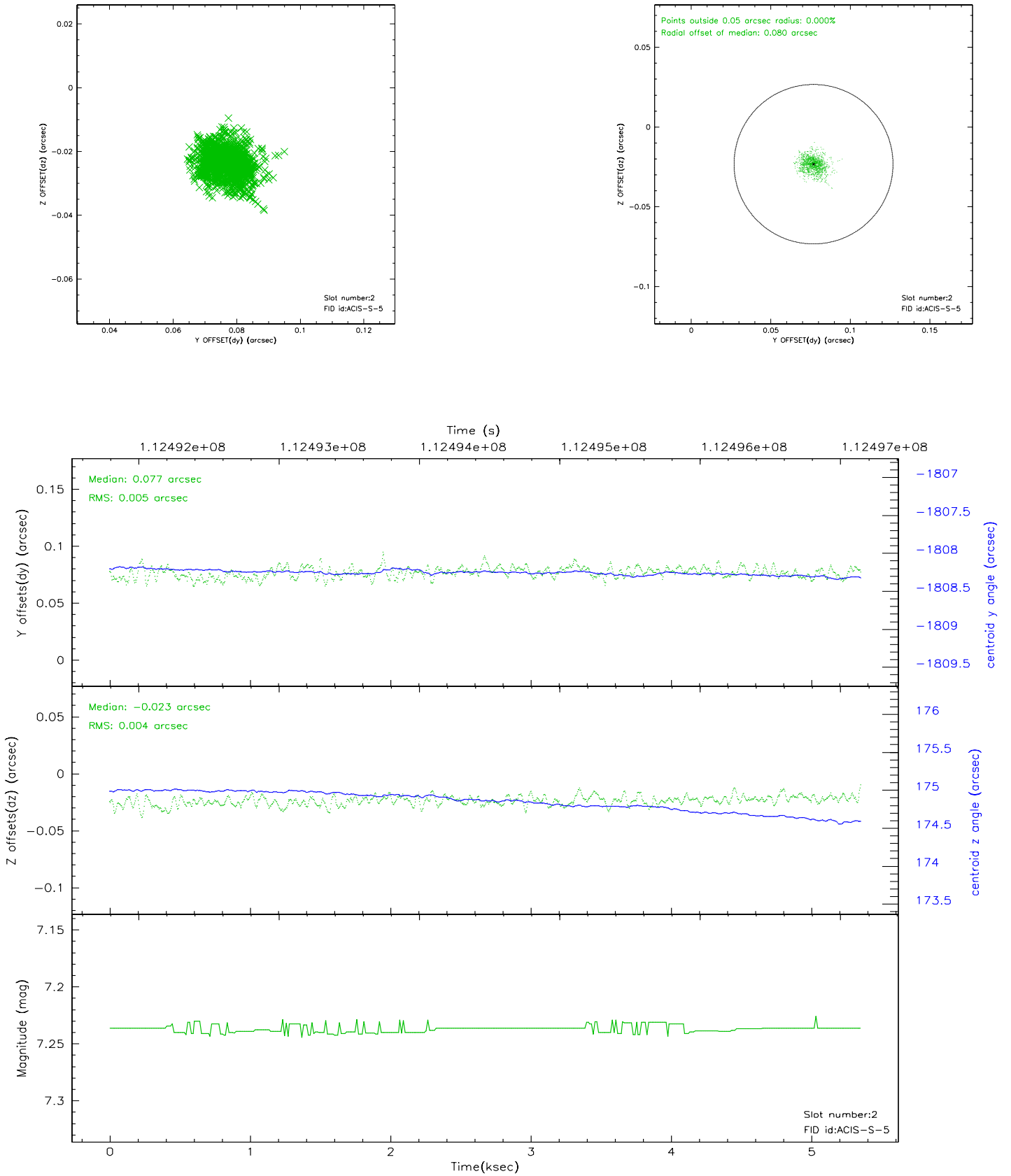
2.5.1 Slot 0



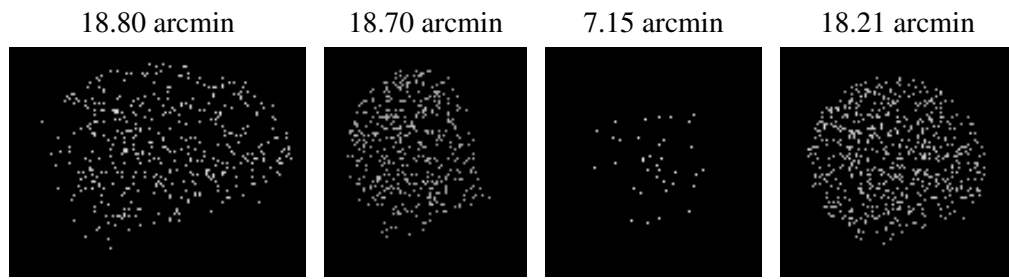
2.5.2 Slot 1



2.5.3 Slot 2



3 Point Sources



A Summary

A.1 Status

V&V Scientist	Jen Lauer
V&V Date (YYYY-MM-DD)	2006.12.15
V&V Edition	1
V&V Disposition and Status	OK
V&V Charge Time	5.225

A.2 Comments