

V&V Reference Report

L2 ASCDS Version : 7.6.9

Observation 2108 - L2 Version 001
Chandra X-Ray Center

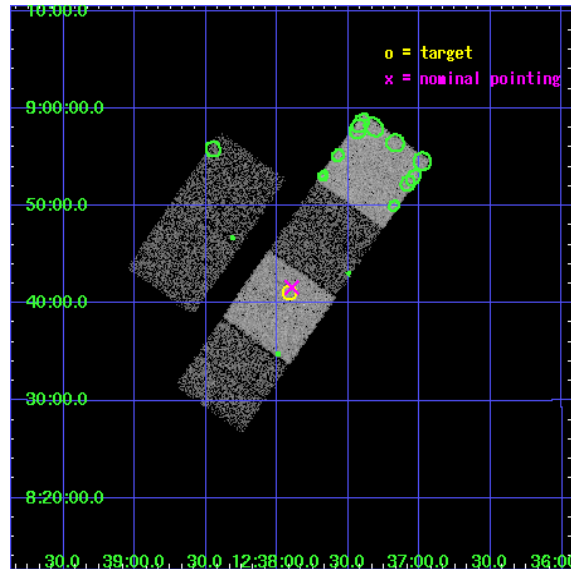
L2 Processing Date : Nov 15 2006

Contents

1	Front	2
2	OBI	3
2.1	OBI	3
2.1.1	Images	3
2.1.2	Bias	3
2.1.3	Parameters	4
2.1.4	Events	4
2.2	Compared Parameters	5
2.3	Aspect	6
2.4	Star Slots	9
2.4.1	Slot 3	9
2.4.2	Slot 4	10
2.4.3	Slot 5	11
2.4.4	Slot 6	12
2.4.5	Slot 7	13
2.5	FID Slots	14
2.5.1	Slot 0	14
2.5.2	Slot 1	15
2.5.3	Slot 2	16
3	Point Sources	17
A	Summary	18
A.1	Status	18
A.2	Comments	18

1 Front

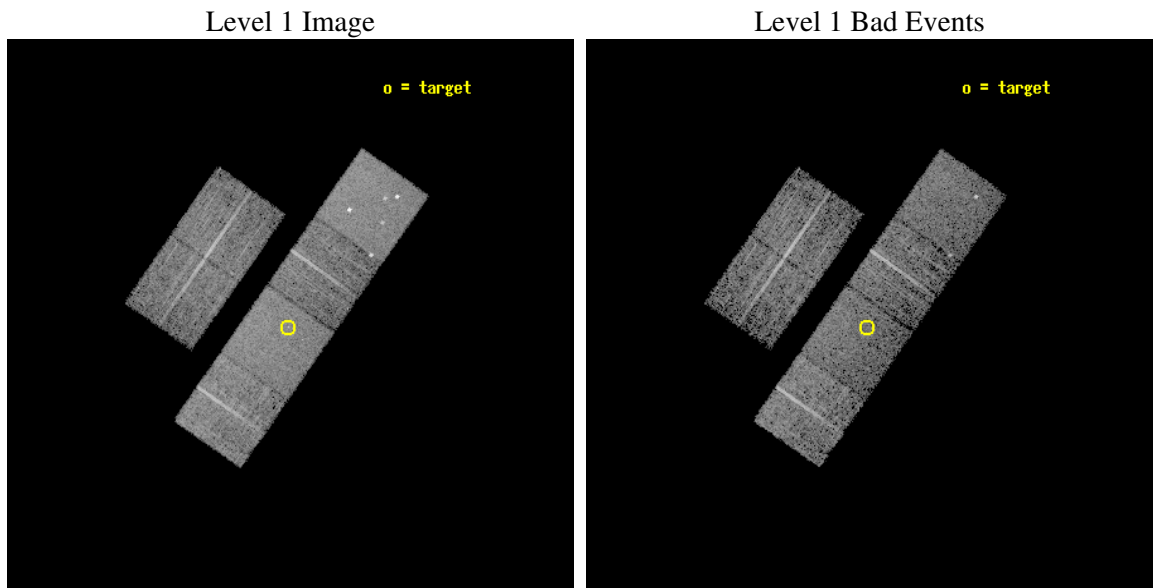
seq_num	700298
obs_id	2108
title	PUBLIC OBSERVATIONS OF A WELL-DEFINED SAMPLE OF BAL QSOS FROM THE LARGE BRIGHT QUASAR SURVEY: REMOVING THE BARRIERS
observer	Prof. William Brandt
object	LBQS 1235+0857
dtcycle	0
cycle	P
ra_targ	189.478333
dec_targ	8.684833
ra_nom	189.4742591557
dec_nom	8.6937024633221
roll_nom	124.96099095908
revision	2
ontime	5699.2000053078
livetime	5627.0333031943
ontime2	5699.2000053078
ontime3	5695.9590350538
ontime5	5699.2000053078
ontime6	5699.2000053078
ontime7	5699.2000053078
ontime8	5695.9590350688
l2events	56219



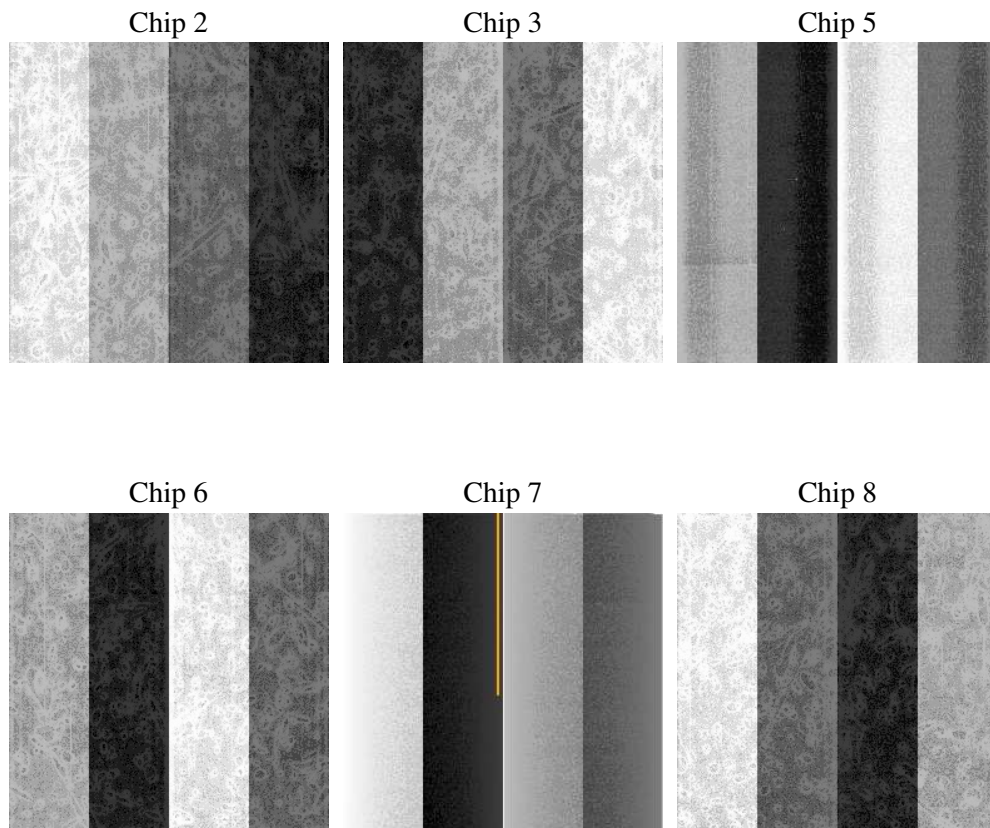
2 OBI

2.1 OBI

2.1.1 Images



2.1.2 Bias



2.1.3 Parameters

obi_num	0
ascdsver	7.6.9
caldsver	3.2.4
date	2006-11-15T17:09:32
revision	2

sched_exp_time	6000.000000
ontime	5704.1632504612
ontime2	5704.1632504612
ontime3	5700.9222802073
ontime5	5704.1632504612
ontime6	5704.1632504612
ontime7	5704.1632504612
ontime8	5700.9221606106
l1events	268627

2.1.4 Events

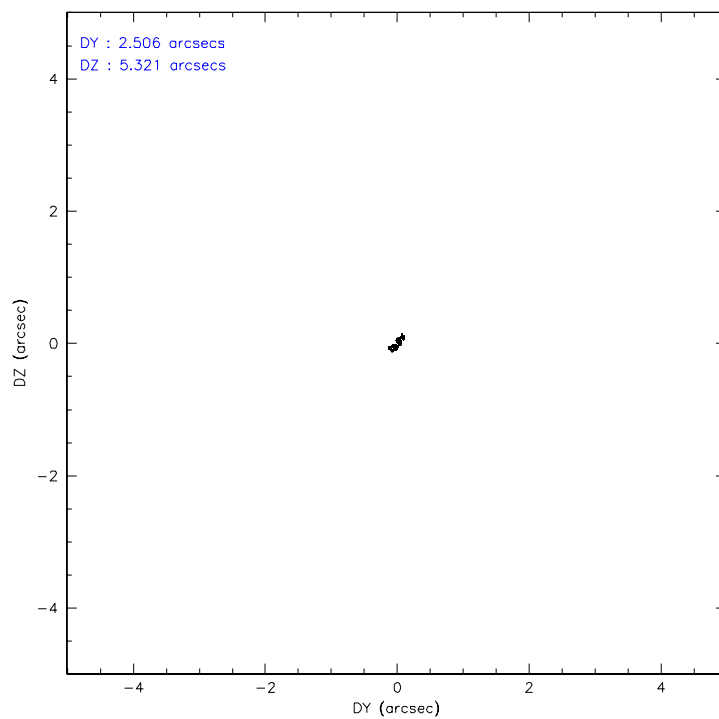
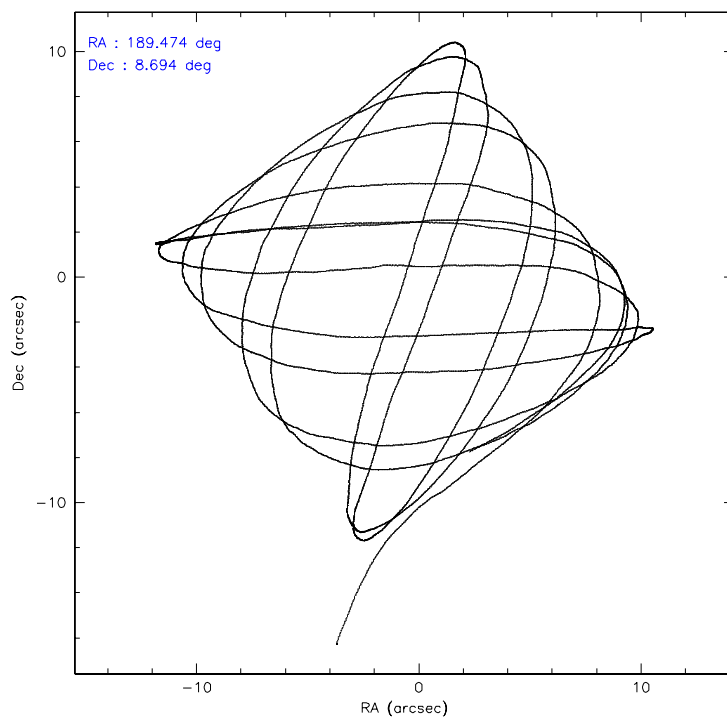
	ccd 2	ccd 3	ccd 5	ccd 6	ccd 7	ccd 8
level 1 events	39738	36445	55955	37305	48779	50405
rejected events	35353	32112	30116	32632	29923	41222
rejected %	88%	88%	53%	87%	61%	81%

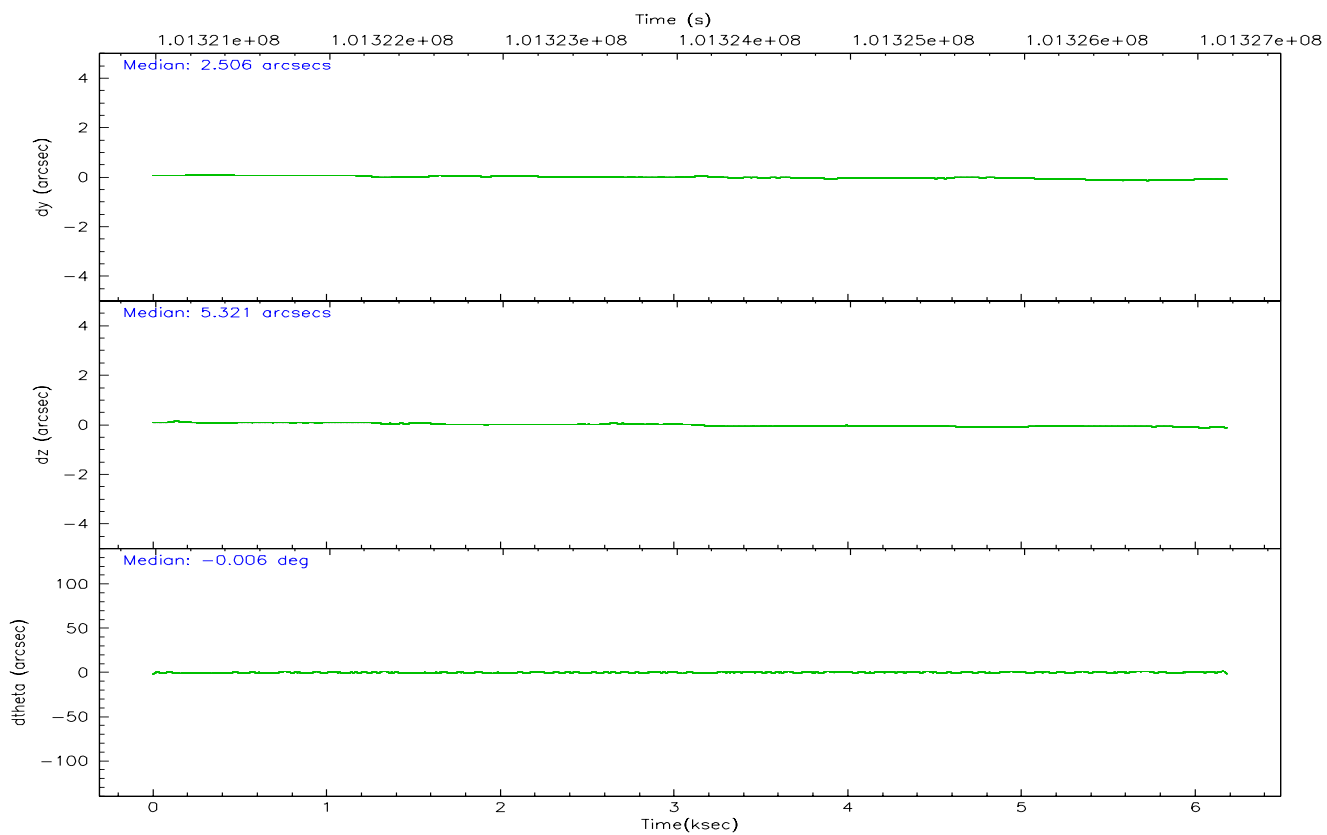
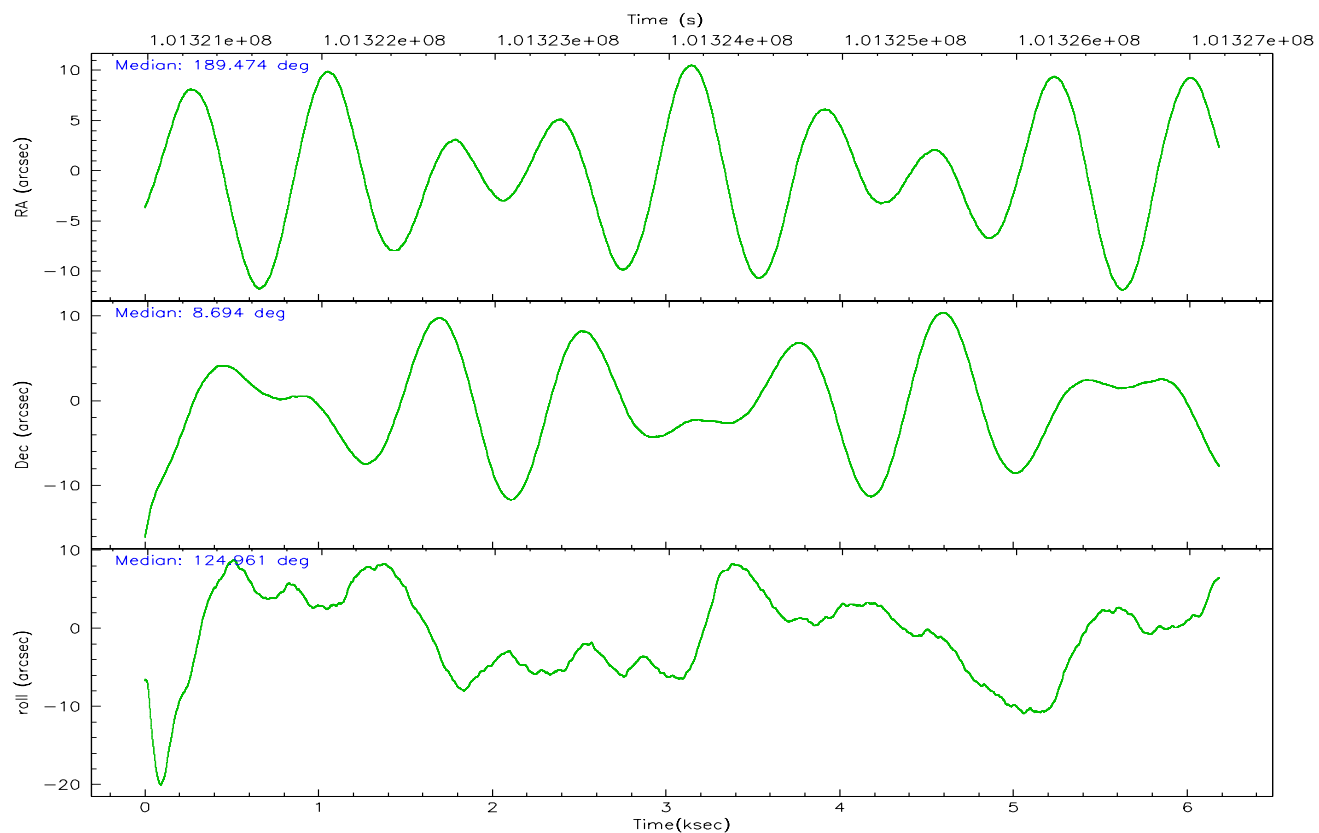
	ccd 2	ccd 3	ccd 5	ccd 6	ccd 7	ccd 8
grade 0 events	1835	1895	3694	1964	1434	3123
	4%	5%	6%	5%	2%	6%
grade 1 events	16	19	146	19	22	28
	0%	0%	0%	0%	0%	0%
grade 2 events	945	865	7696	952	4559	1944
	2%	2%	13%	2%	9%	3%
grade 3 events	398	406	611	438	1037	937
	1%	1%	1%	1%	2%	1%
grade 4 events	412	413	533	423	1029	935
	1%	1%	0%	1%	2%	1%
grade 5 events	1334	1370	2730	1584	3319	1967
	3%	3%	4%	4%	6%	3%
grade 6 events	798	757	13322	899	10804	2258
	2%	2%	23%	2%	22%	4%
grade 7 events	34000	30720	27223	31026	26575	39213
	85%	84%	48%	83%	54%	77%

2.2 Compared Parameters

Parameter	Planned	Actual	Parameter	Planned	Actual
Instrument	ACIS	ACIS	Obspar format version number	6	6
Detector	ACIS-235678	ACIS-235678	Obspar file type	PREDICTED	ACTUAL
Grating	NONE	NONE	Obspar update status	NONE	UPDATED
Data mode	FAINT	FAINT	Number of optional ACIS chips dropped	0	0
Observation mode	POINTING	POINTING	On-chip summing requested	N	N
Pointing RA	189.499334	189.4742591557023	Subarray requested	NONE	NONE
Pointing Dec	8.682417	8.693702463322138	Alternating exposures requested	N	N
Pointing Roll	124.800566	124.9609909590816	Primary exposure time	0.000000	3.2
SIM focus pos (mm)	-0.684267	-0.6828225247311905			
SIM defocus (mm)	0	0.001444936568705701			
SIM translation stage pos (mm)	-190.132523	-190.1425803651734			
SIM translation stage offset (mm)	0	0.01005778216563158			
Observation start time	101321168.184000	101320303.86897			
Observation start date	2001-03-18T16:45:04	2001-03-18T16:31:43			
Observation end time	101327168.184000	101327606.48175			
Observation end date	2001-03-18T18:25:04	2001-03-18T18:33:26			
Read mode	TIMED	TIMED			

2.3 Aspect



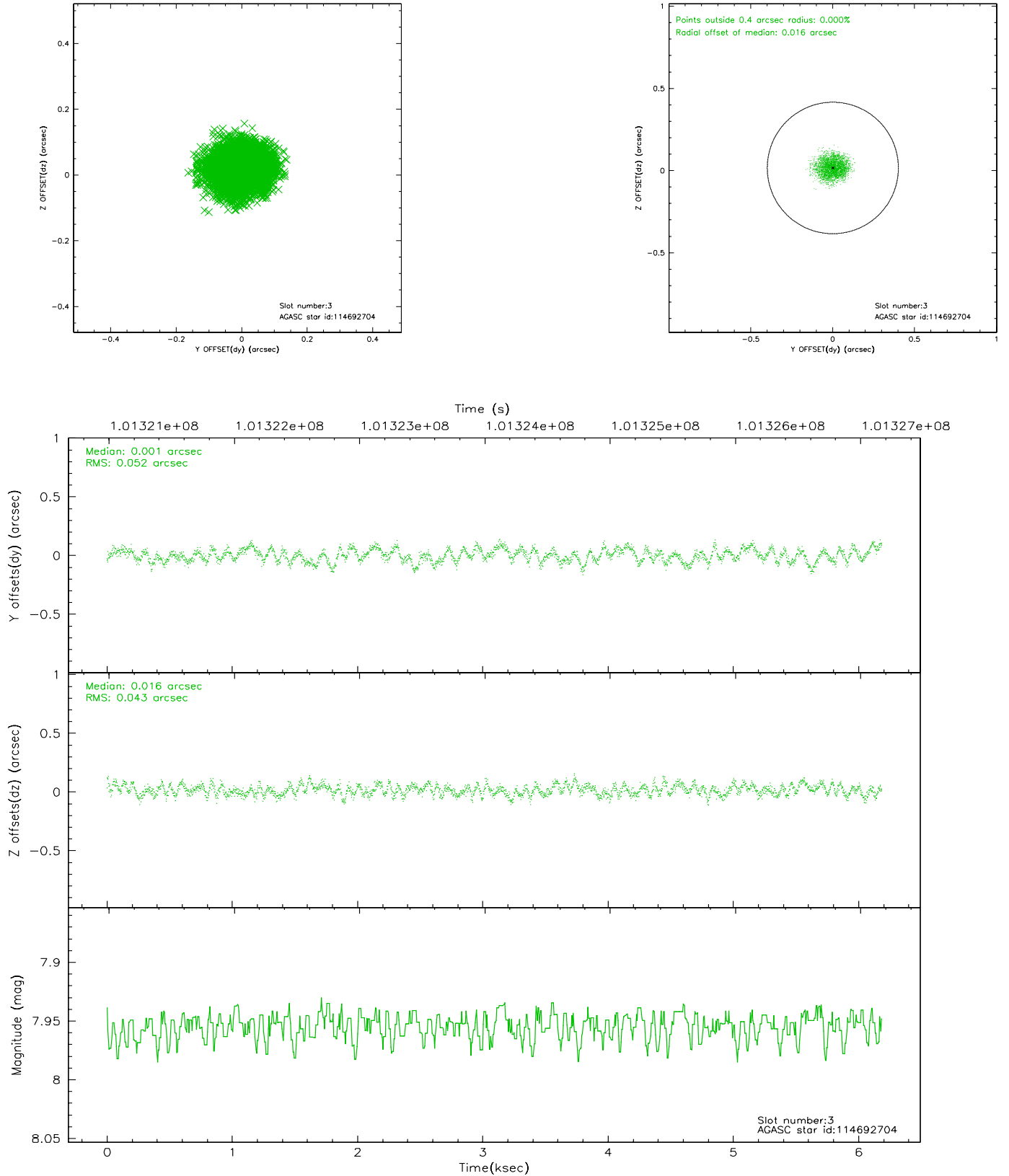


Slot Statistics

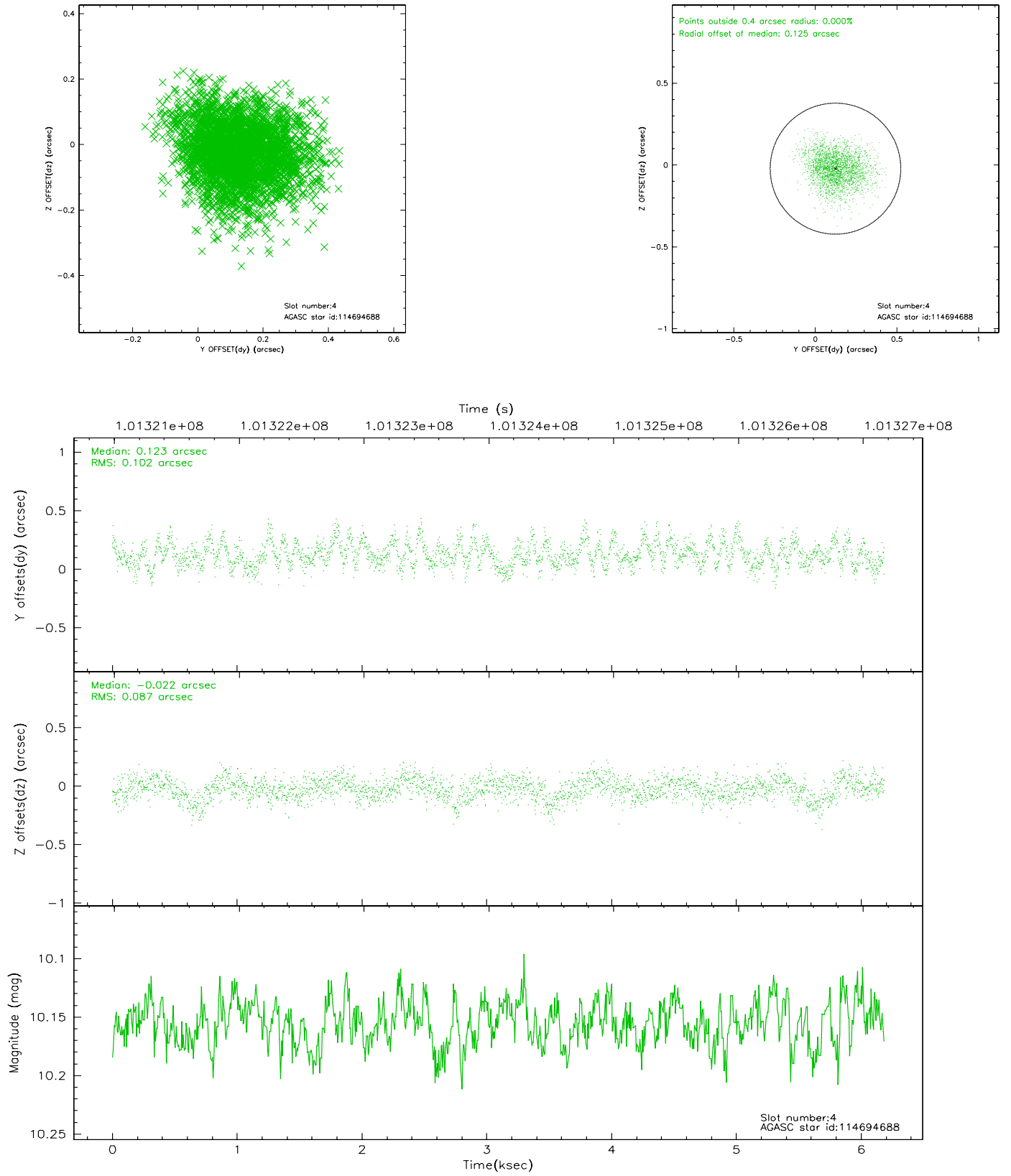
slot	status	id	mag	n_pts	med_dy	med_dz	dr1	dr2	ra	dec	mean_y	mean_z
0	FID	ACIS-S-2	7.11	1509	-0.023	0.021	0.006	0.010	0.000000	0.000000	-755.11	-1726.39
1	FID	ACIS-S-4	7.20	1509	-0.065	0.006	0.005	0.009	0.000000	0.000000	2157.65	181.17
2	FID	ACIS-S-5	7.24	1509	0.057	-0.018	0.006	0.011	0.000000	0.000000	-1806.69	175.80
3	GUIDE	114692704	7.95	3018	0.001	0.016	0.074	0.110	190.058663	8.527242	-1593.96	-1317.29
4	GUIDE	114694688	10.15	3005	0.123	-0.022	0.143	0.234	189.263977	7.894749	-1849.64	2306.86
5	GUIDE	114690480	10.11	3018	-0.136	0.034	0.125	0.209	188.948113	9.074321	2277.39	803.79
6	GUIDE	114693384	10.08	2935	-0.049	0.101	0.127	0.206	189.691817	9.170786	1054.42	-1564.82
7	GUIDE	114695376	9.21	3017	0.057	-0.122	0.122	0.188	189.203557	7.933205	-1612.15	2404.39

2.4 Star Slots

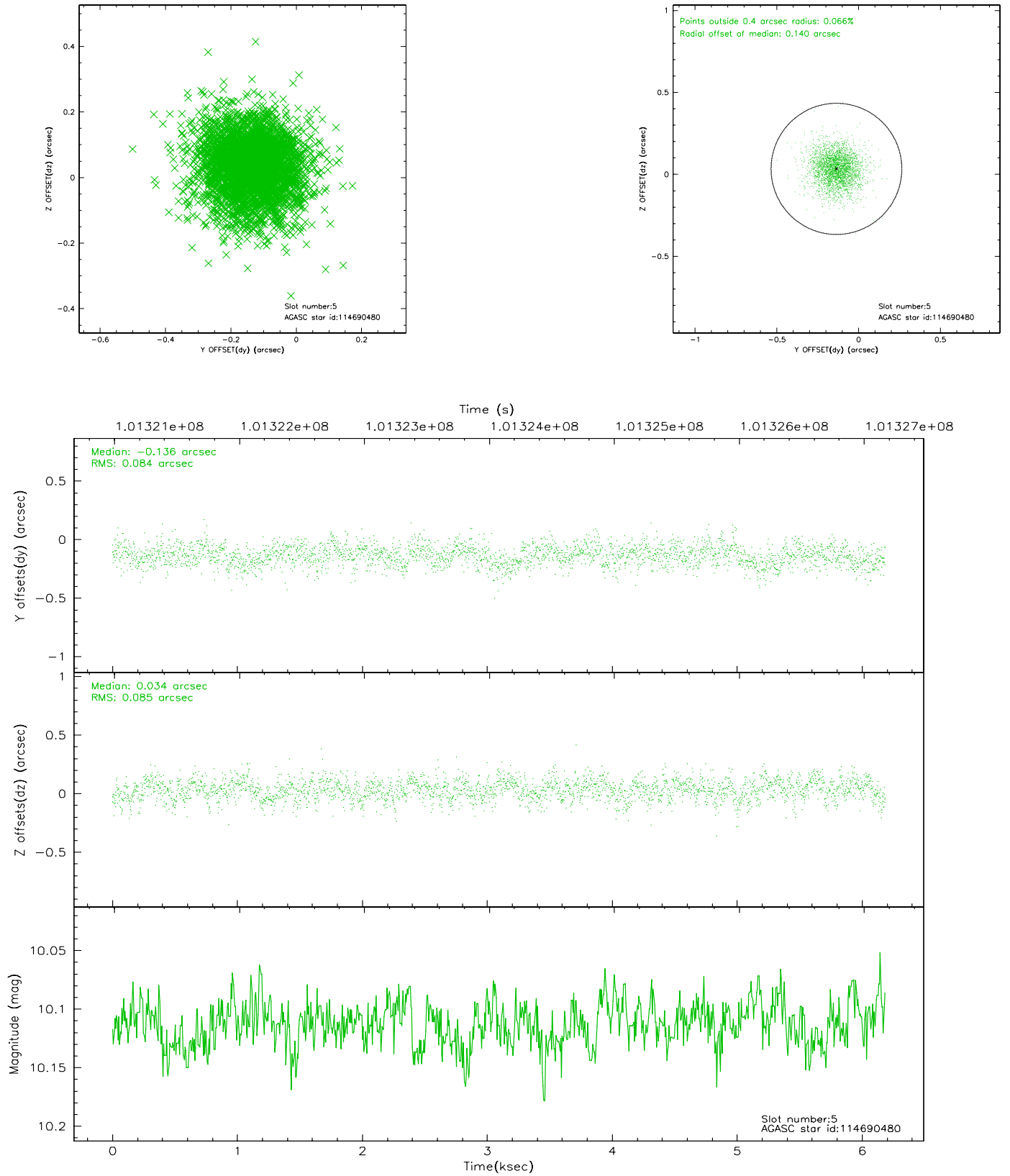
2.4.1 Slot 3



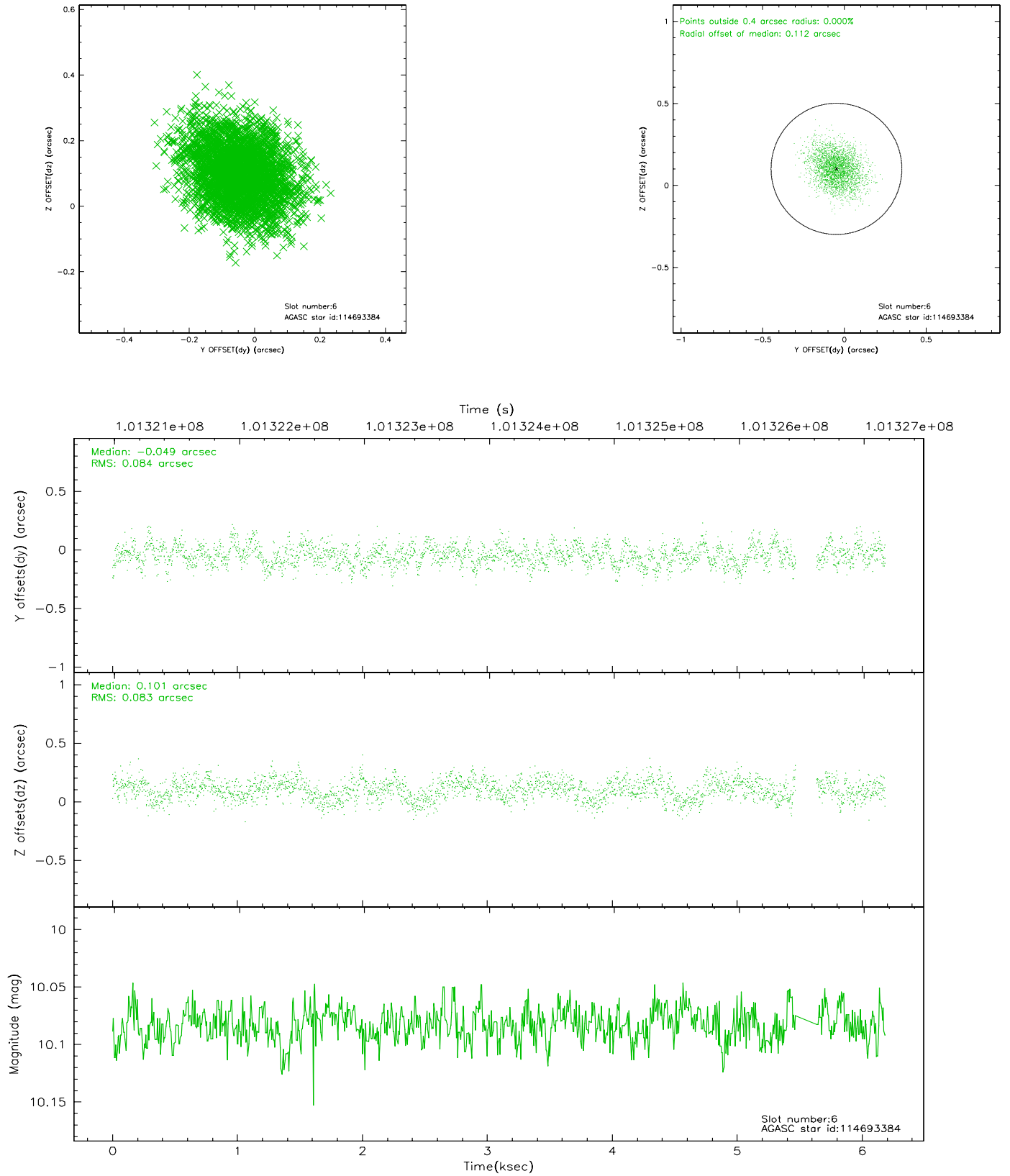
2.4.2 Slot 4



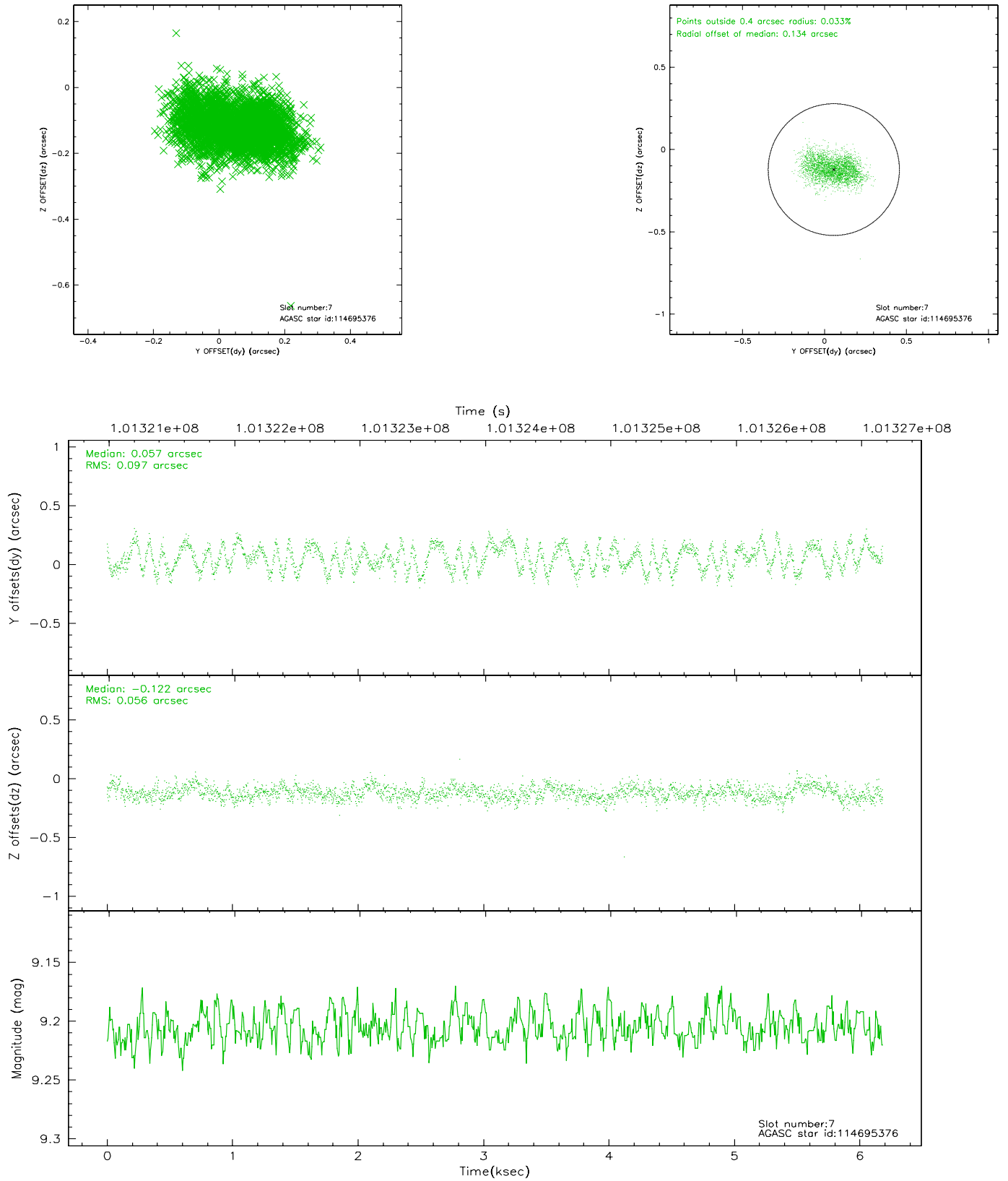
2.4.3 Slot 5



2.4.4 Slot 6

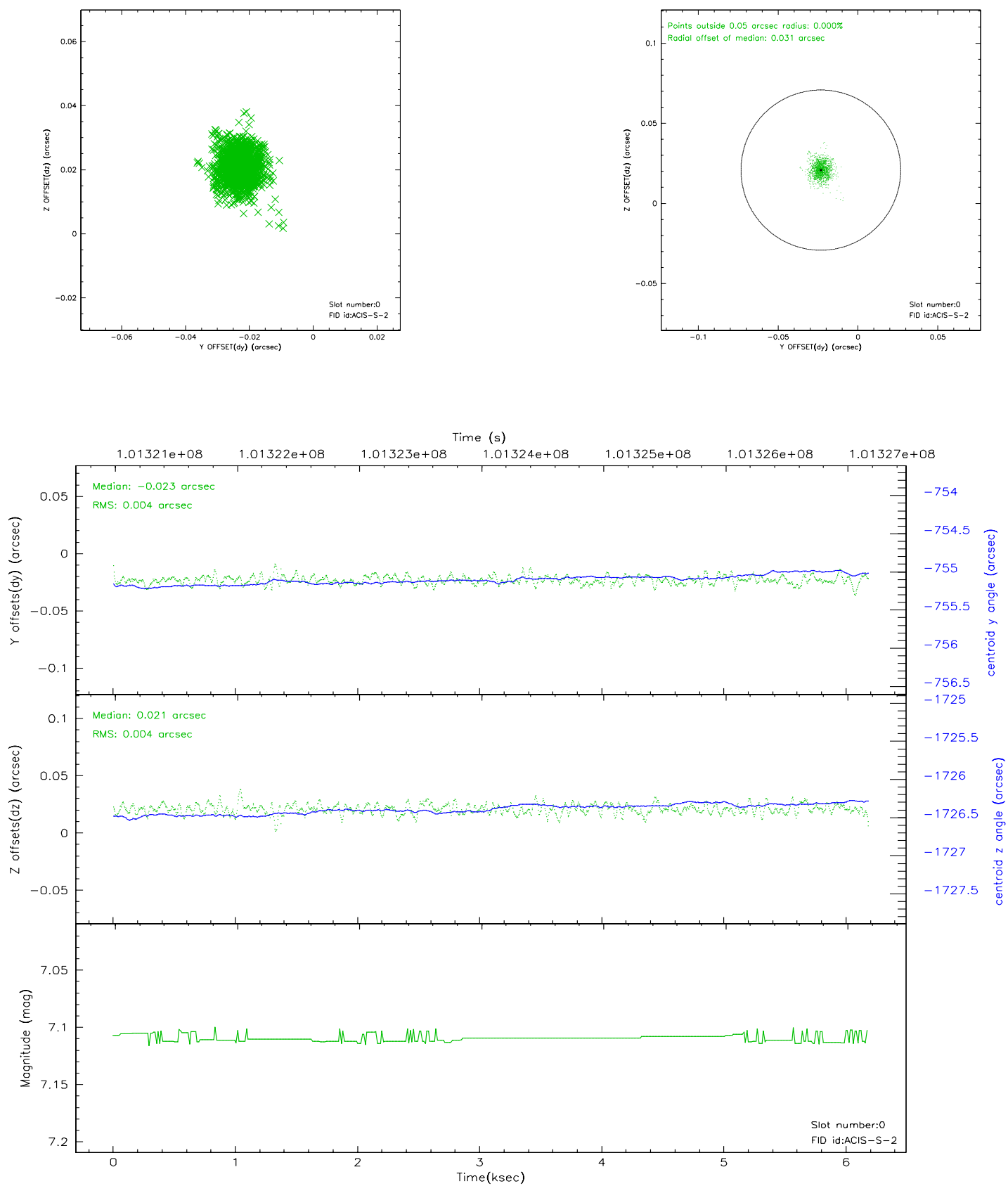


2.4.5 Slot 7

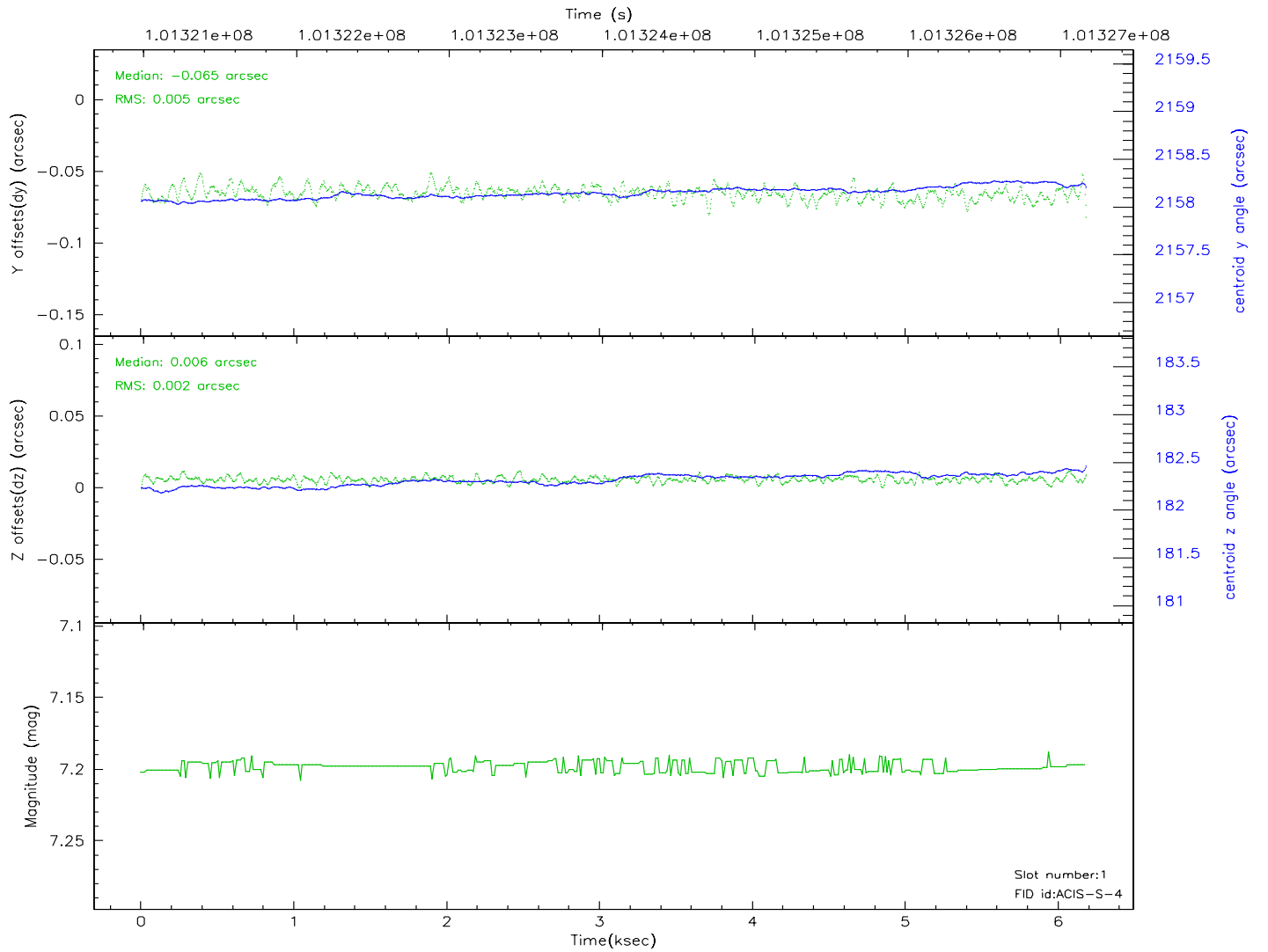
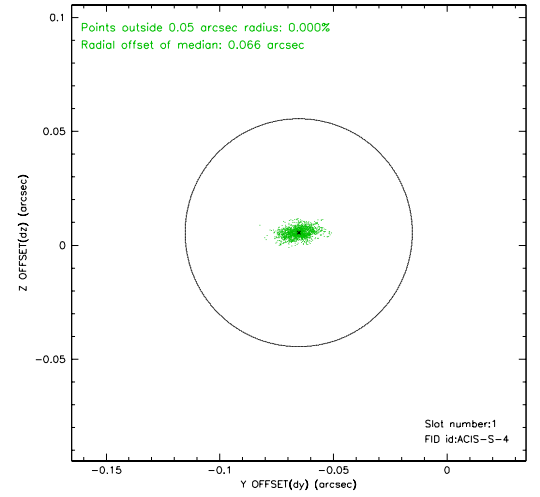
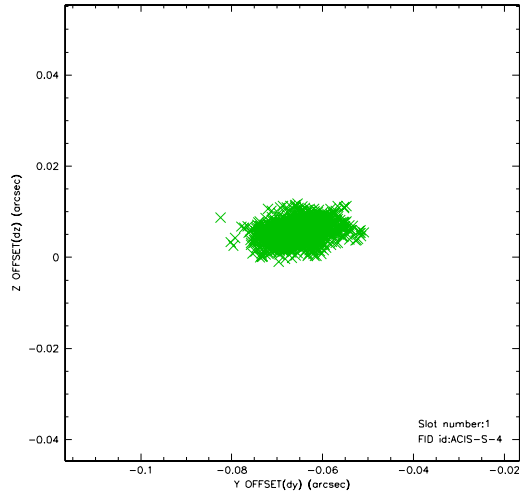


2.5 FID Slots

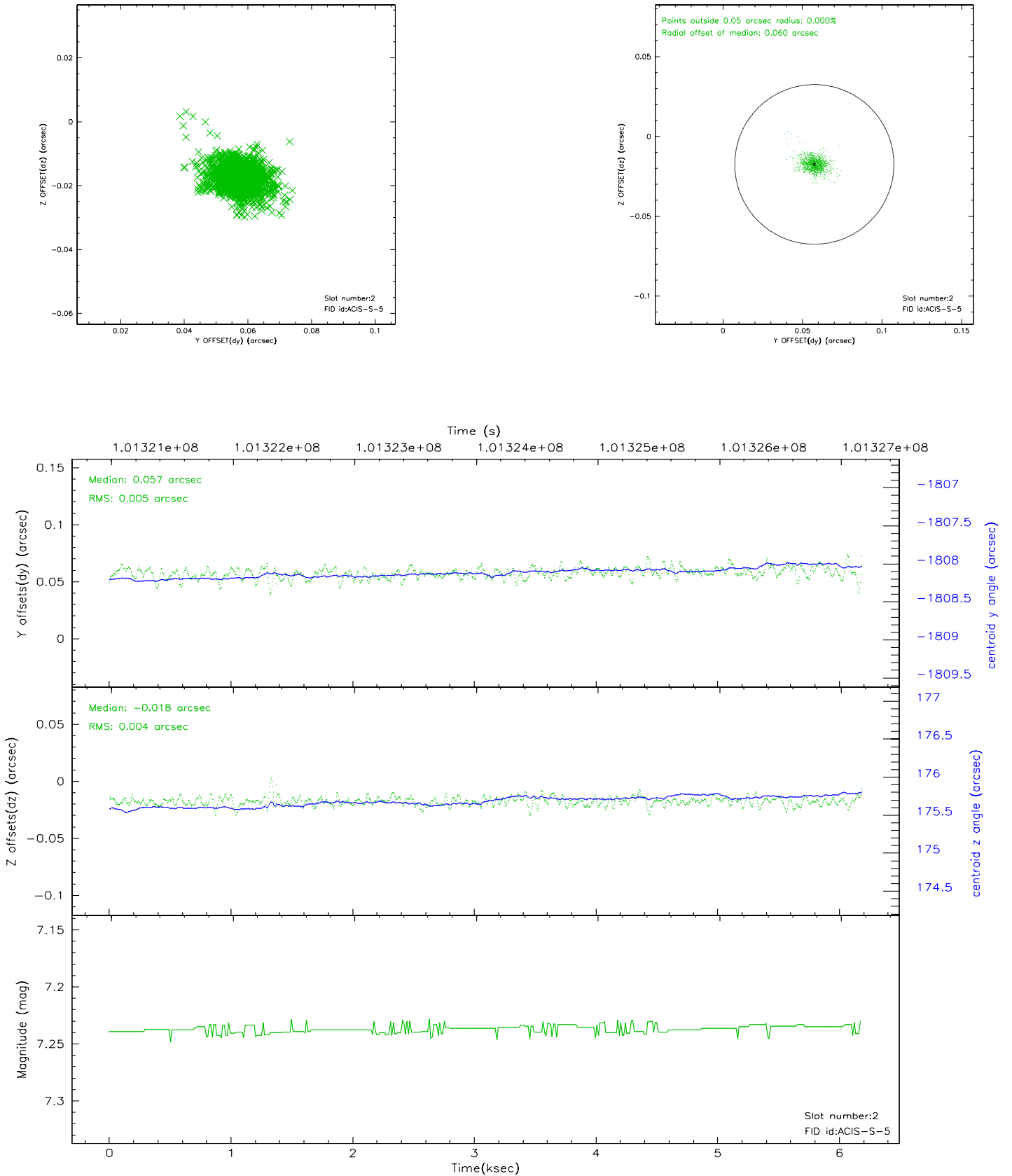
2.5.1 Slot 0



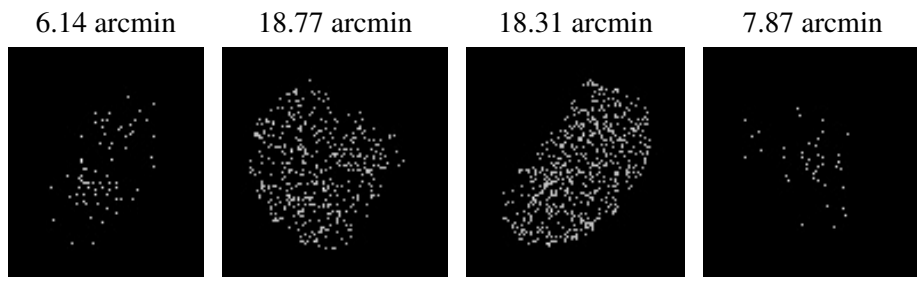
2.5.2 Slot 1



2.5.3 Slot 2



3 Point Sources



A Summary

A.1 Status

V&V Scientist	Jen Lauer
V&V Date (YYYY-MM-DD)	2006.11.15
V&V Edition	1
V&V Disposition and Status	OK
V&V Charge Time	5.7

A.2 Comments