

V&V Reference Report

L2 ASCDS Version : 7.6.10

Observation 2100 - L2 Version 001
Chandra X-Ray Center

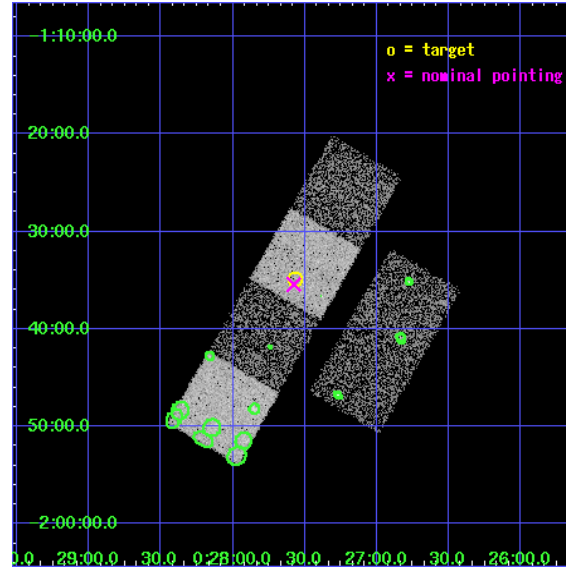
L2 Processing Date : Jan 13 2007

Contents

1	Front	2
2	OBI	3
2.1	OBI	3
2.1.1	Images	3
2.1.2	Bias	3
2.1.3	Parameters	4
2.1.4	Events	4
2.2	Compared Parameters	5
2.3	Aspect	6
2.4	Star Slots	9
2.4.1	Slot 3	9
2.4.2	Slot 4	10
2.4.3	Slot 5	11
2.4.4	Slot 6	12
2.4.5	Slot 7	13
2.5	FID Slots	14
2.5.1	Slot 0	14
2.5.2	Slot 1	15
2.5.3	Slot 2	16
3	Point Sources	17
A	Summary	18
A.1	Status	18
A.2	Comments	18

1 Front

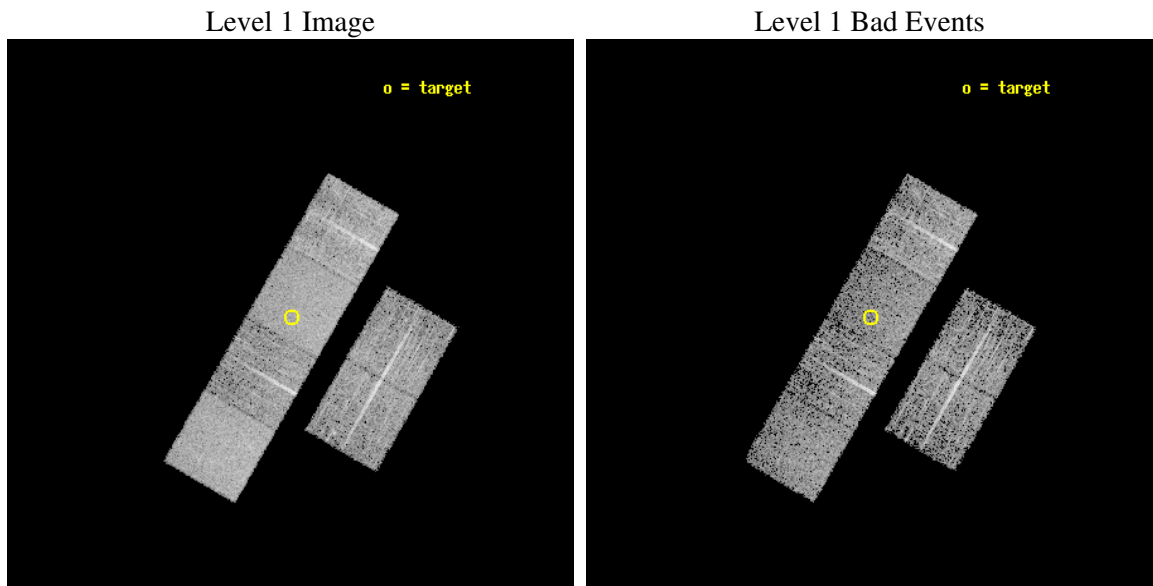
seq_num	700290
obs_id	2100
title	PUBLIC OBSERVATIONS OF A WELL-DEFINED SAMPLE OF BAL QSOS FROM THE LARGE BRIGHT QUASAR SURVEY: REMOVING THE BARRIERS
observer	Prof. William Brandt
object	LBQS 0025-0151
dtcycle	0
cycle	P
ra_targ	6.890833
dec_targ	-1.581278
ra_nom	6.8941005375275
dec_nom	-1.5904054541385
roll_nom	300.00005303697
revision	2
ontime	4752.0000044256
livetime	4691.8273190587
ontime2	4752.0000044256
ontime3	4752.0000044256
ontime5	4752.0000044256
ontime6	4752.0000044256
ontime7	4752.0000044256
ontime8	4748.7590441853
l2events	46639



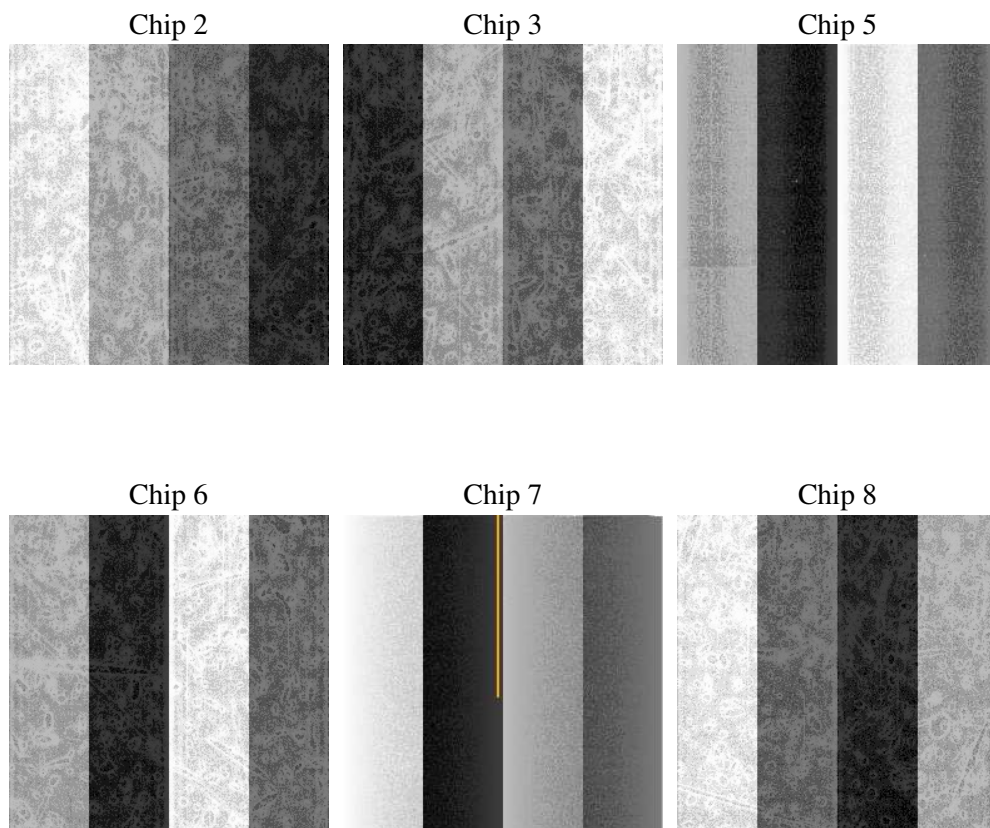
2 OBI

2.1 OBI

2.1.1 Images



2.1.2 Bias



2.1.3 Parameters

obi_num	0
ascdsver	7.6.10
caldsver	3.3.0
date	2007-01-13T11:30:53
revision	2

sched_exp_time	5000.000000
ontime	4752.0000044256
ontime2	4752.0000044256
ontime3	4752.0000044256
ontime5	4752.0000044256
ontime6	4752.0000044256
ontime7	4752.0000044256
ontime8	4748.7590441853
l1events	210957

2.1.4 Events

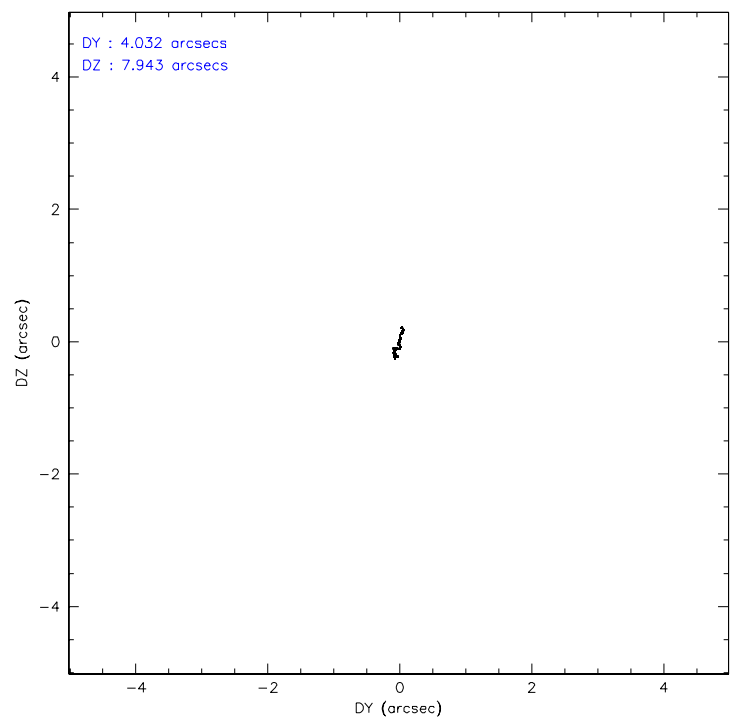
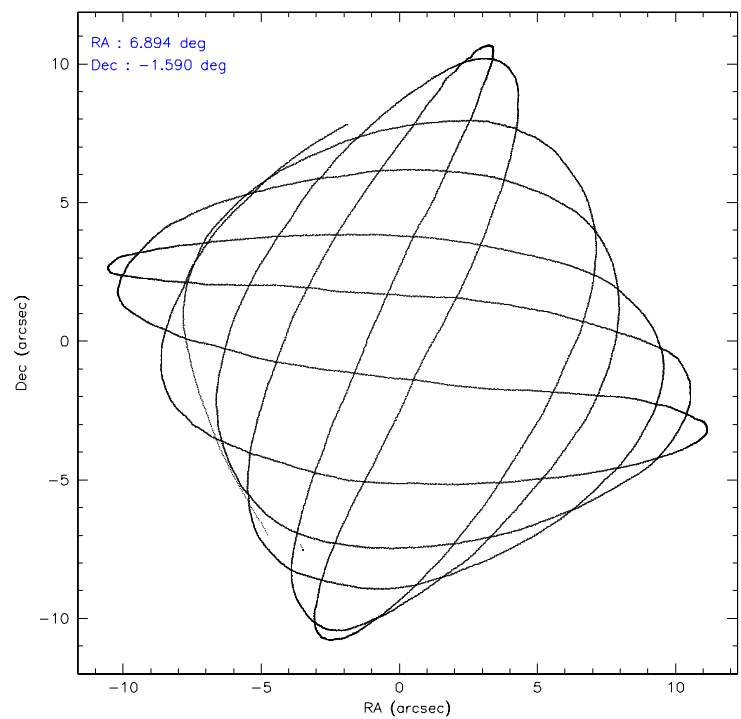
	ccd 2	ccd 3	ccd 5	ccd 6	ccd 7	ccd 8
level 1 events	30057	30226	42119	29194	38774	40587
rejected events	26544	26626	23518	25764	22518	32870
rejected %	88%	88%	55%	88%	58%	80%

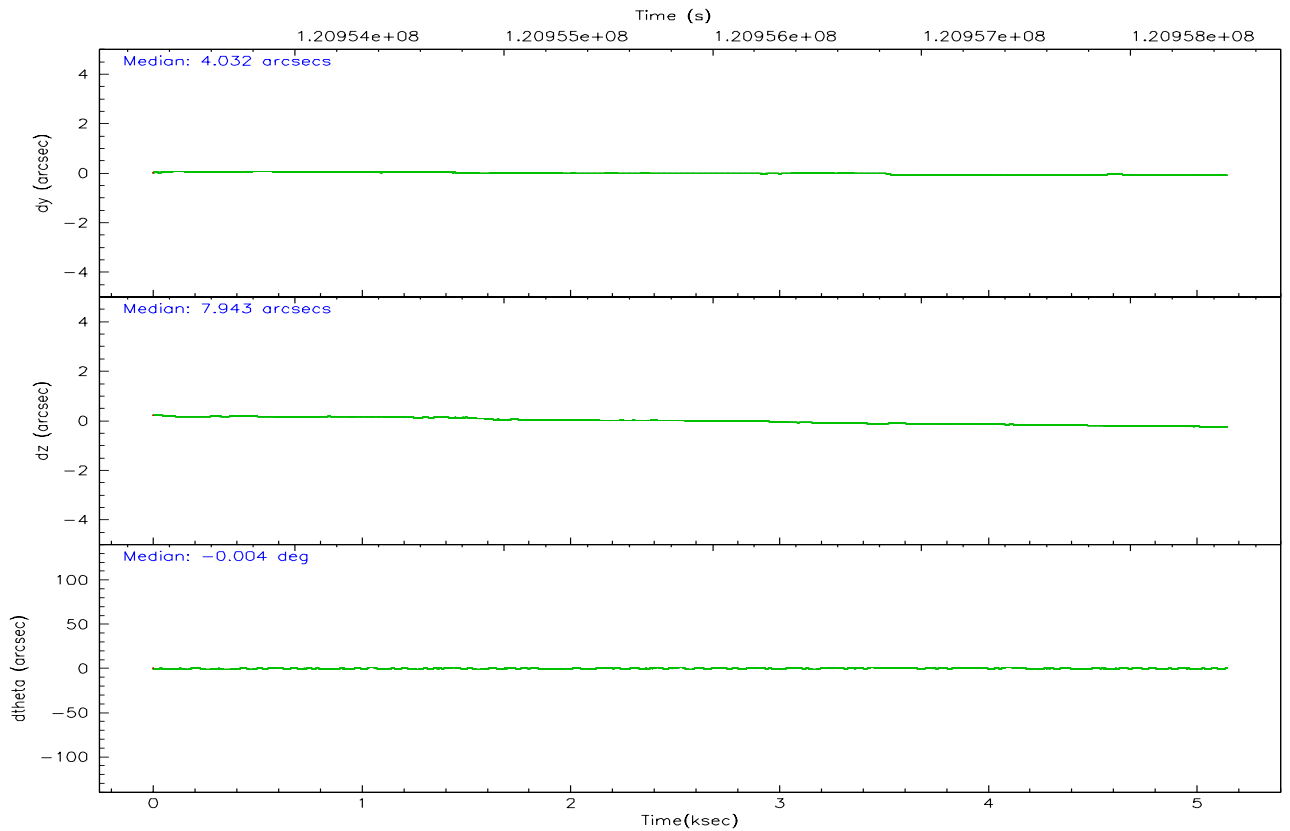
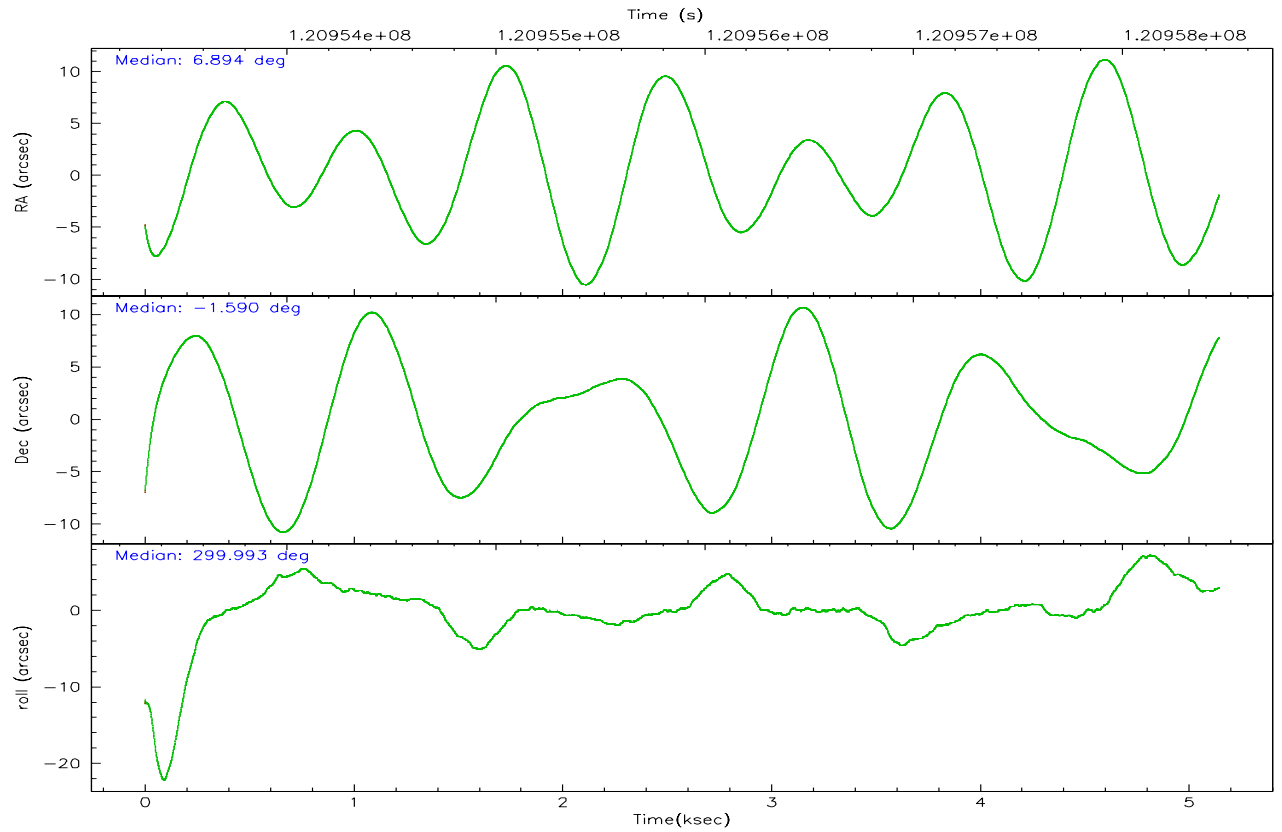
	ccd 2	ccd 3	ccd 5	ccd 6	ccd 7	ccd 8
grade 0 events	1482	1513	1340	1373	1473	2342
	4%	5%	3%	4%	3%	5%
grade 1 events	14	14	44	16	33	29
	0%	0%	0%	0%	0%	0%
grade 2 events	767	724	5487	697	3229	1697
	2%	2%	13%	2%	8%	4%
grade 3 events	330	381	813	344	1482	782
	1%	1%	1%	1%	3%	1%
grade 4 events	313	364	755	333	1463	772
	1%	1%	1%	1%	3%	1%
grade 5 events	1014	1183	3295	1298	3676	1592
	3%	3%	7%	4%	9%	3%
grade 6 events	623	624	10239	691	8628	2129
	2%	2%	24%	2%	22%	5%
grade 7 events	25514	25423	20146	24442	18790	31244
	84%	84%	47%	83%	48%	76%

2.2 Compared Parameters

Parameter	Planned	Actual	Parameter	Planned	Actual
Instrument	ACIS	ACIS	Obspar format version number	6	6
Detector	ACIS-235678	ACIS-235678	Obspar file type	PREDICTED	ACTUAL
Grating	NONE	NONE	Obspar update status	NONE	UPDATED
Data mode	FAINT	FAINT	Number of optional ACIS chips dropped	0	0
Observation mode	POINTING	POINTING	On-chip summing requested	N	N
Pointing RA	6.870348	6.894100537527507	Subarray requested	NONE	NONE
Pointing Dec	-1.577078	-1.590405454138479	Alternating exposures requested	N	N
Pointing Roll	299.842739	300.0000530369743	Primary exposure time	0.000000	3.2
SIM focus pos (mm)	-0.684267	-0.6828225247311905			
SIM defocus (mm)	0	0.001444936568705701			
SIM translation stage pos (mm)	-190.132523	-190.1400660498719			
SIM translation stage offset (mm)	0	0.00754346686406393			
Observation start time	120953464.184000	120952448.92573			
Observation start date	2001-10-31T22:10:00	2001-10-31T21:54:08			
Observation end time	120958464.184000	120959360.501			
Observation end date	2001-10-31T23:33:20	2001-10-31T23:49:20			
Read mode	TIMED	TIMED			

2.3 Aspect



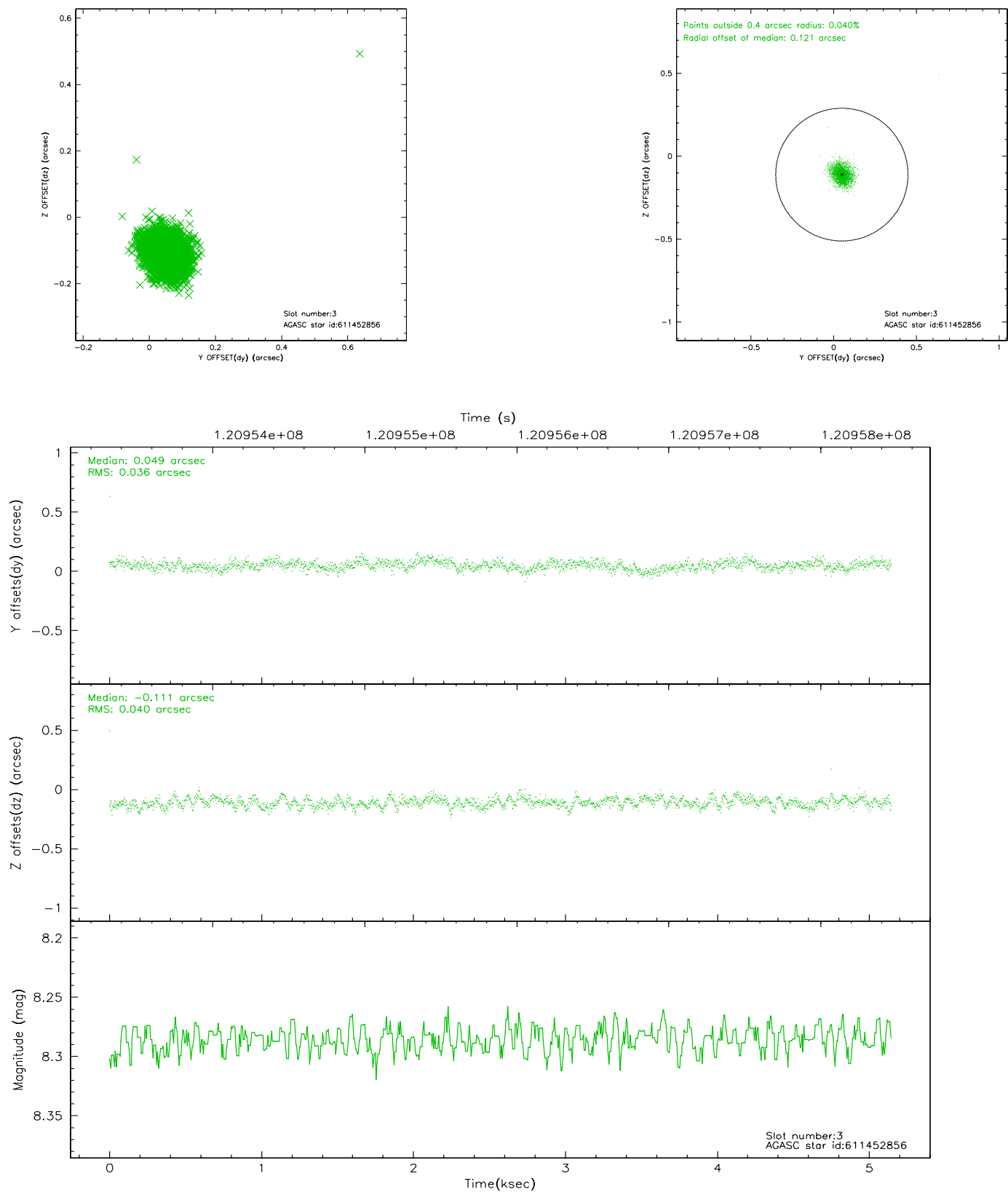


Slot Statistics

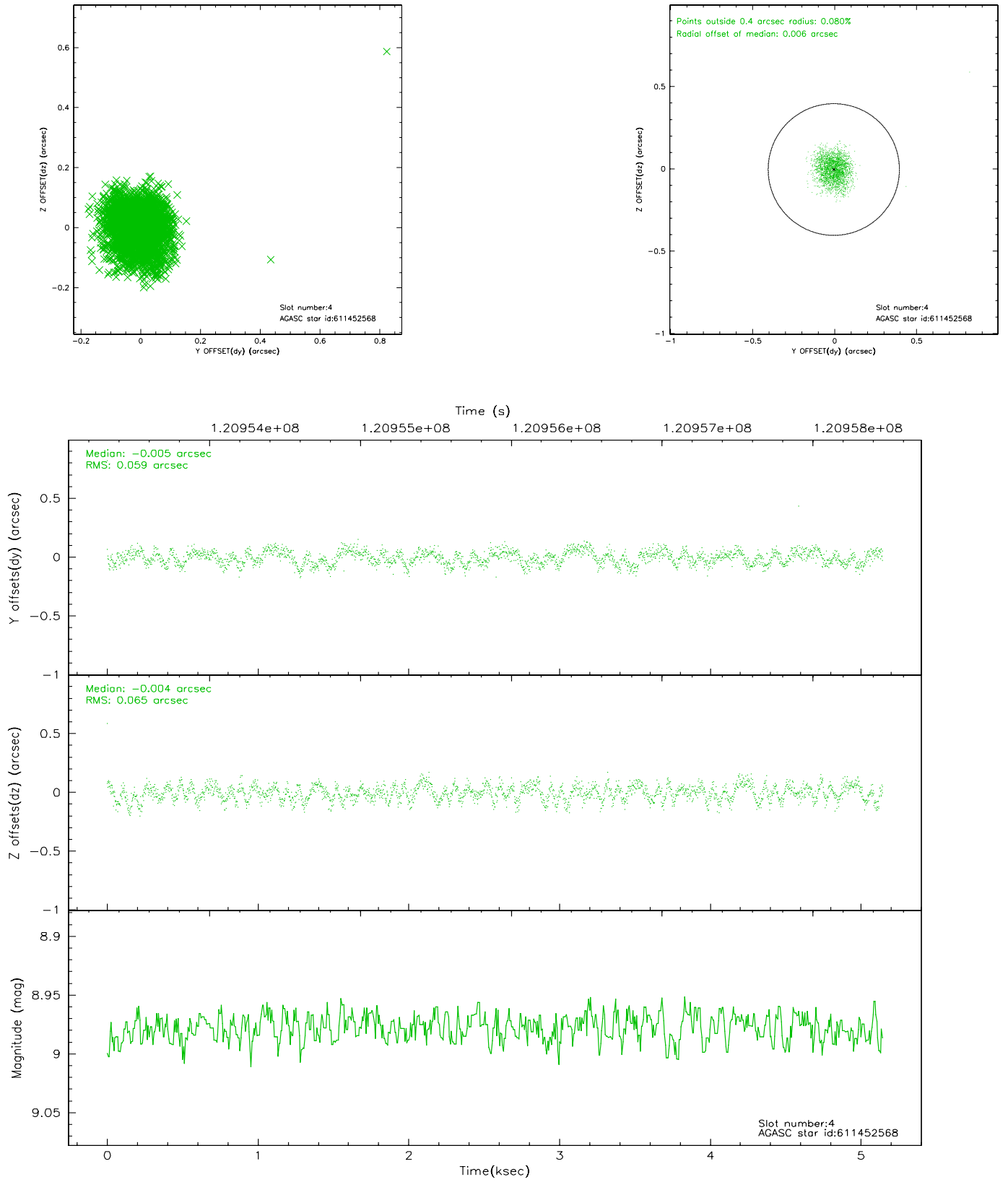
slot	status	id	mag	n_pts	med_dy	med_dz	dr1	dr2	ra	dec	mean_y	mean_z
0	FID	ACIS-S-2	7.12	1256	0.006	0.010	0.008	0.012	0.000000	0.000000	-756.69	-1729.11
1	FID	ACIS-S-4	7.20	1256	-0.044	-0.006	0.005	0.009	0.000000	0.000000	2156.01	178.13
2	FID	ACIS-S-5	7.24	1256	0.007	0.005	0.006	0.010	0.000000	0.000000	-1808.01	173.17
3	GUIDE	611452856	8.29	2511	0.049	-0.111	0.054	0.088	6.980386	-1.681637	523.59	156.02
4	GUIDE	611452568	8.98	2511	-0.005	-0.004	0.092	0.143	6.308705	-1.833133	-205.37	-2211.80
5	GUIDE	611456600	8.78	2511	-0.079	0.023	0.067	0.109	6.721343	-0.929687	-2288.61	693.36
6	GUIDE	611456000	10.02	2507	0.007	-0.034	0.123	0.200	6.481161	-1.475710	-1014.19	-1033.31
7	GUIDE	611460544	10.15	2508	0.024	0.124	0.151	0.259	7.246288	-1.539123	554.31	1241.14

2.4 Star Slots

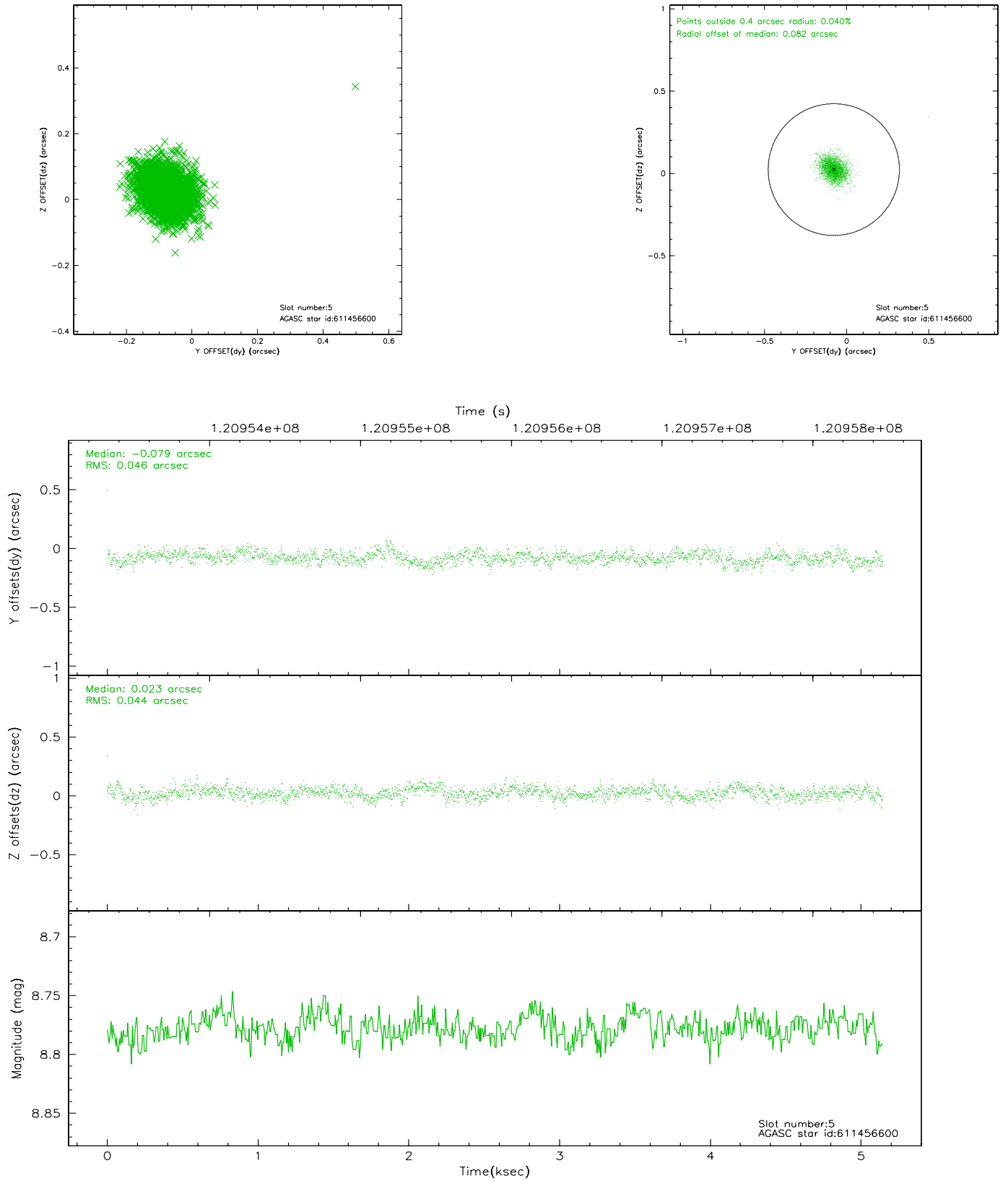
2.4.1 Slot 3



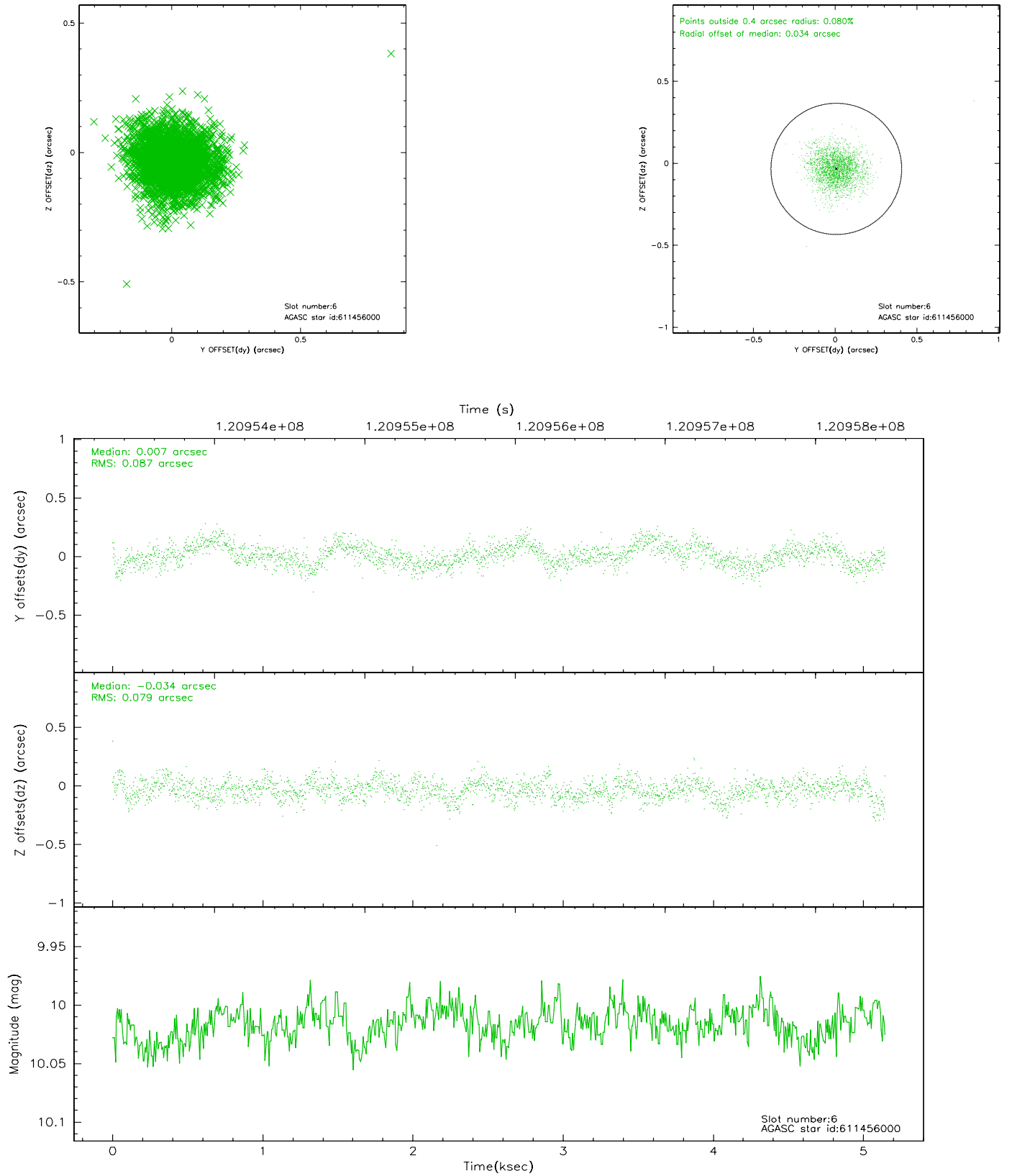
2.4.2 Slot 4



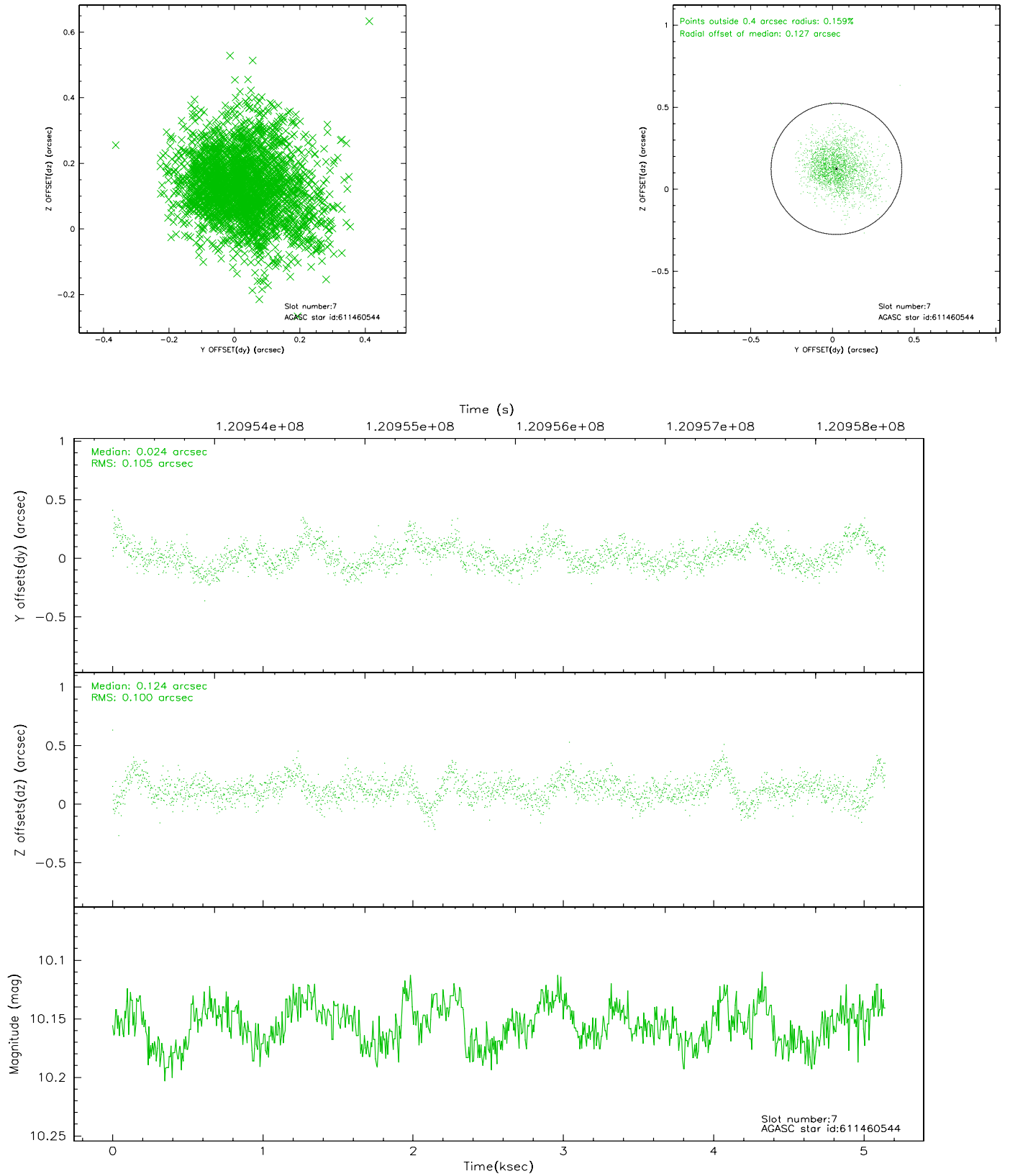
2.4.3 Slot 5



2.4.4 Slot 6

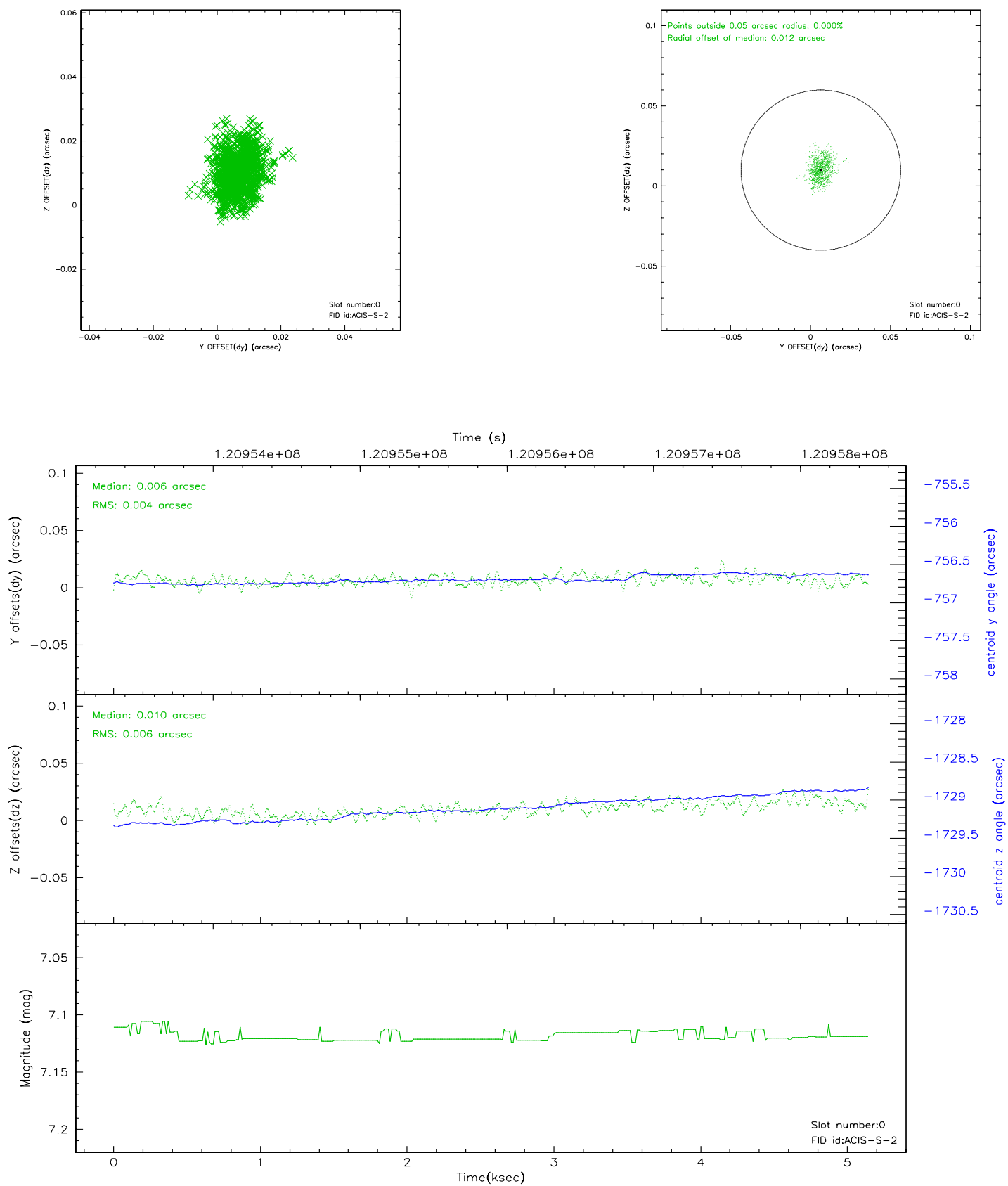


2.4.5 Slot 7

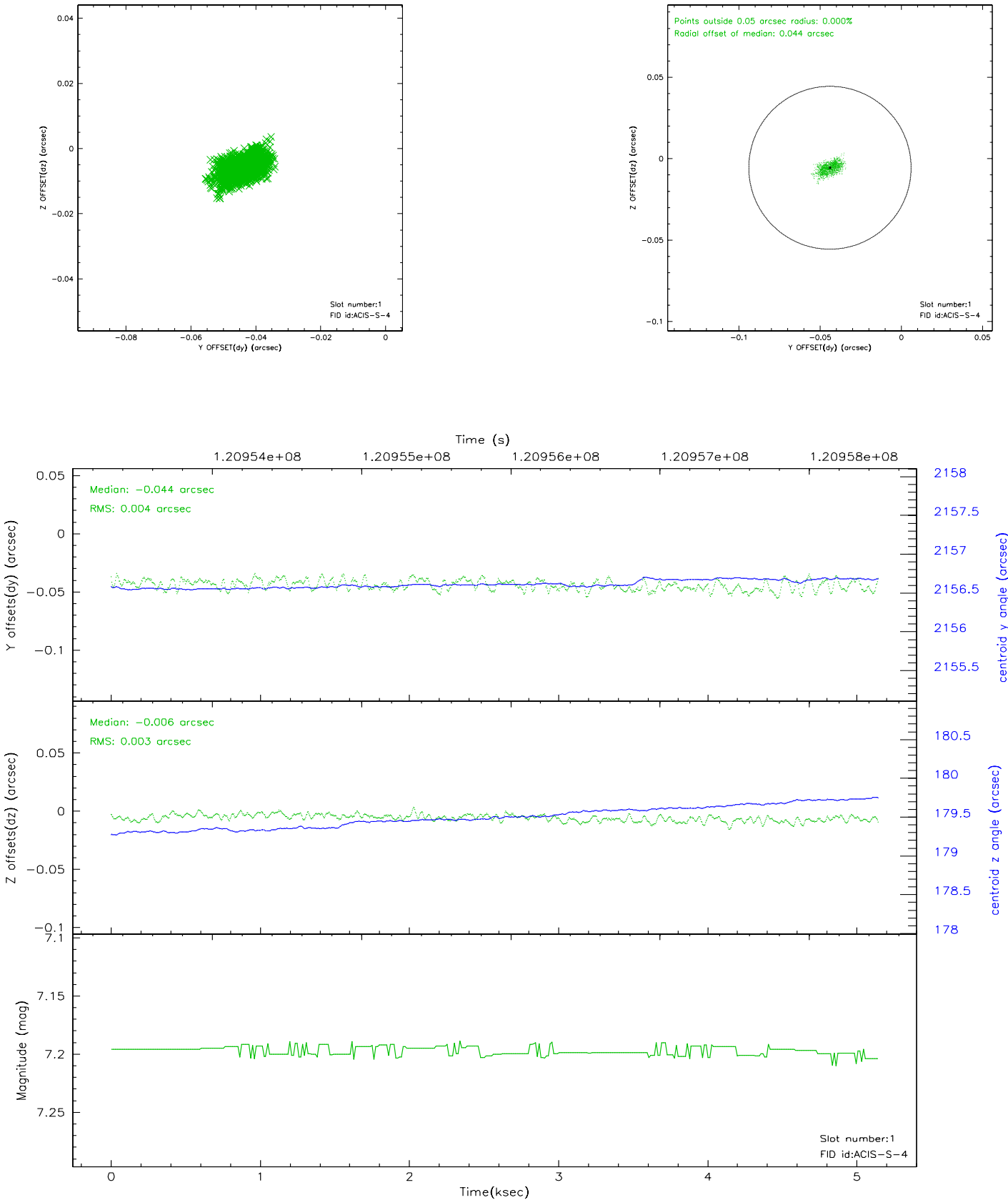


2.5 FID Slots

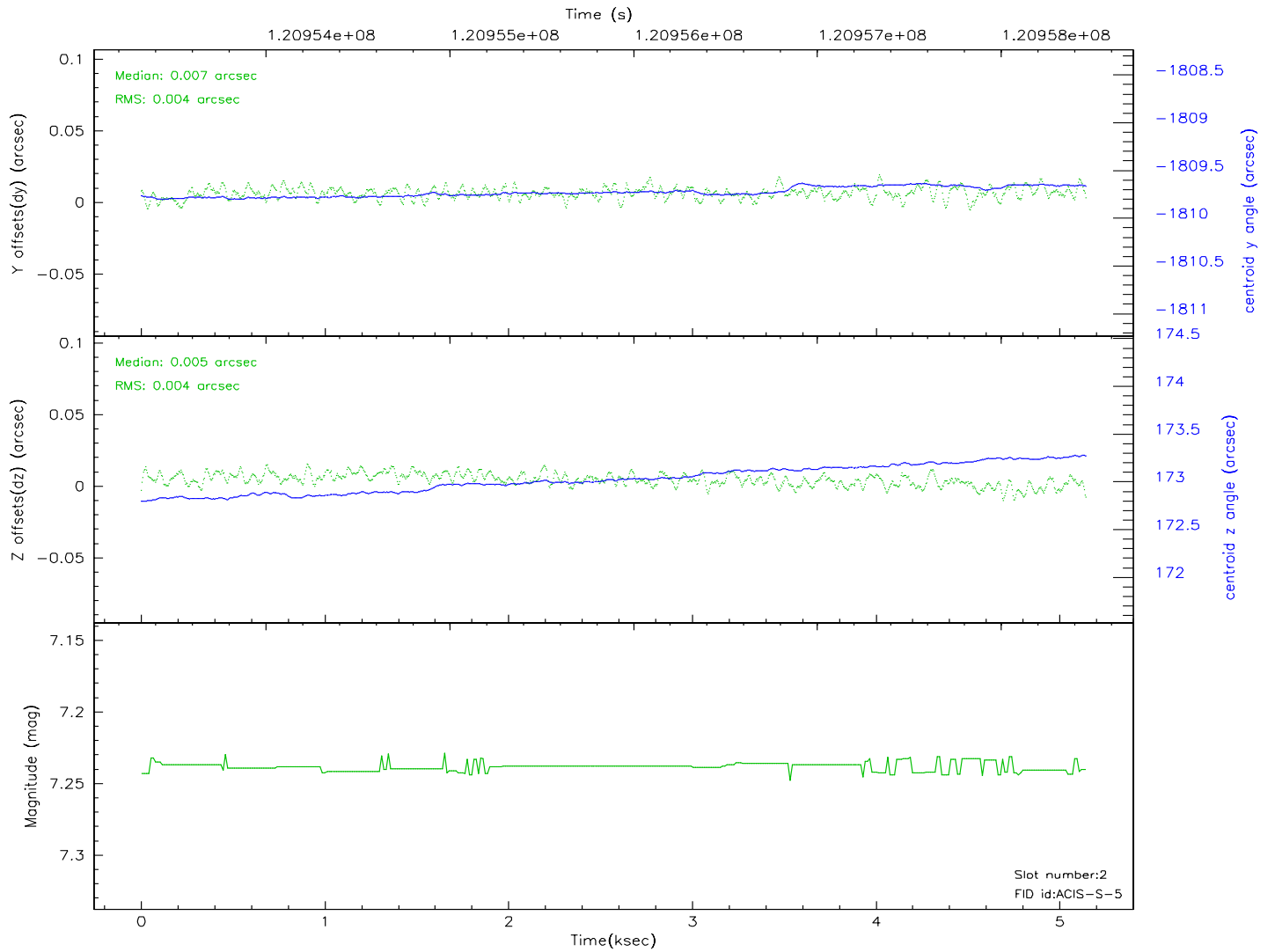
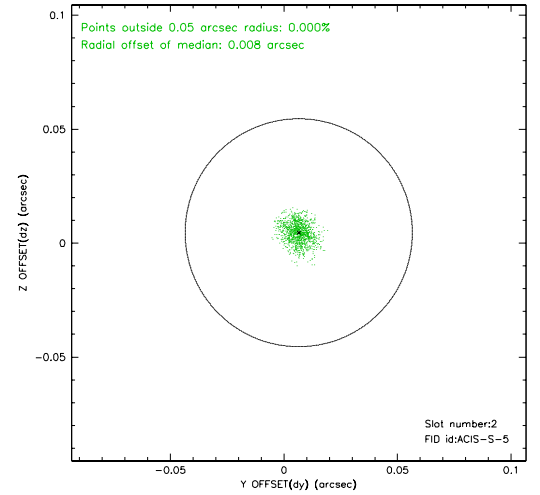
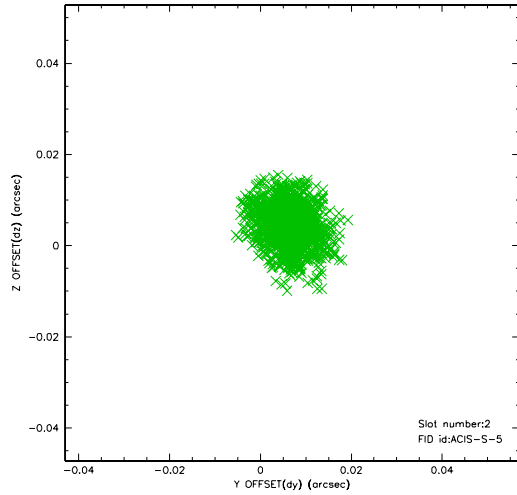
2.5.1 Slot 0



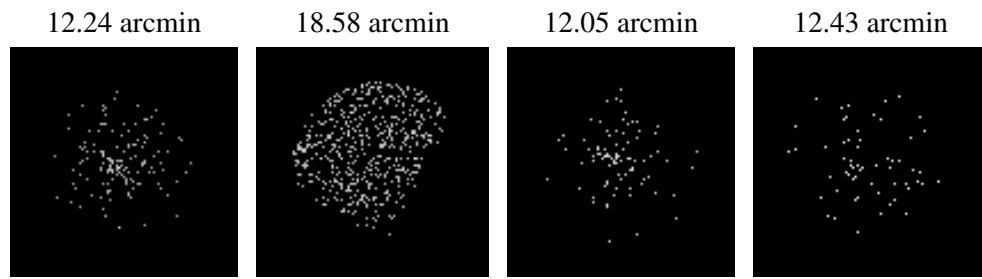
2.5.2 Slot 1



2.5.3 Slot 2



3 Point Sources



A Summary

A.1 Status

V&V Scientist	Beth Sundheim
V&V Date (YYYY-MM-DD)	2007.01.16
V&V Edition	1
V&V Disposition and Status	OK
V&V Charge Time	4.755

A.2 Comments