

# V&V Reference Report

## L2 ASCDS Version : 7.6.9

Observation 2096 - L2 Version 001  
Chandra X-Ray Center

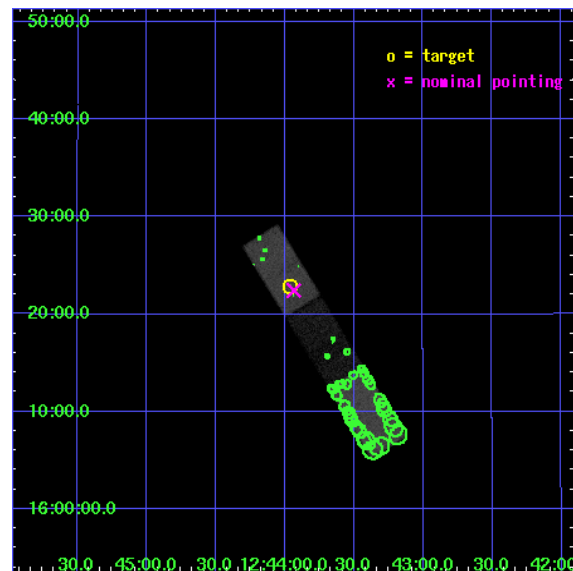
L2 Processing Date : Nov 25 2006

## Contents

<b>1</b>	<b>Front</b>	<b>2</b>
<b>2</b>	<b>OBI</b>	<b>3</b>
2.1	OBI . . . . .	3
2.1.1	Images . . . . .	3
2.1.2	Bias . . . . .	3
2.1.3	Parameters . . . . .	4
2.1.4	Events . . . . .	4
2.2	Compared Parameters . . . . .	5
2.3	Aspect . . . . .	6
2.4	Star Slots . . . . .	9
2.4.1	Slot 3 . . . . .	9
2.4.2	Slot 4 . . . . .	10
2.4.3	Slot 5 . . . . .	11
2.4.4	Slot 6 . . . . .	12
2.4.5	Slot 7 . . . . .	13
2.5	FID Slots . . . . .	14
2.5.1	Slot 0 . . . . .	14
2.5.2	Slot 1 . . . . .	15
2.5.3	Slot 2 . . . . .	16
<b>3</b>	<b>Point Sources</b>	<b>17</b>
<b>A</b>	<b>Summary</b>	<b>18</b>
A.1	Status . . . . .	18
A.2	Comments . . . . .	18

# 1 Front

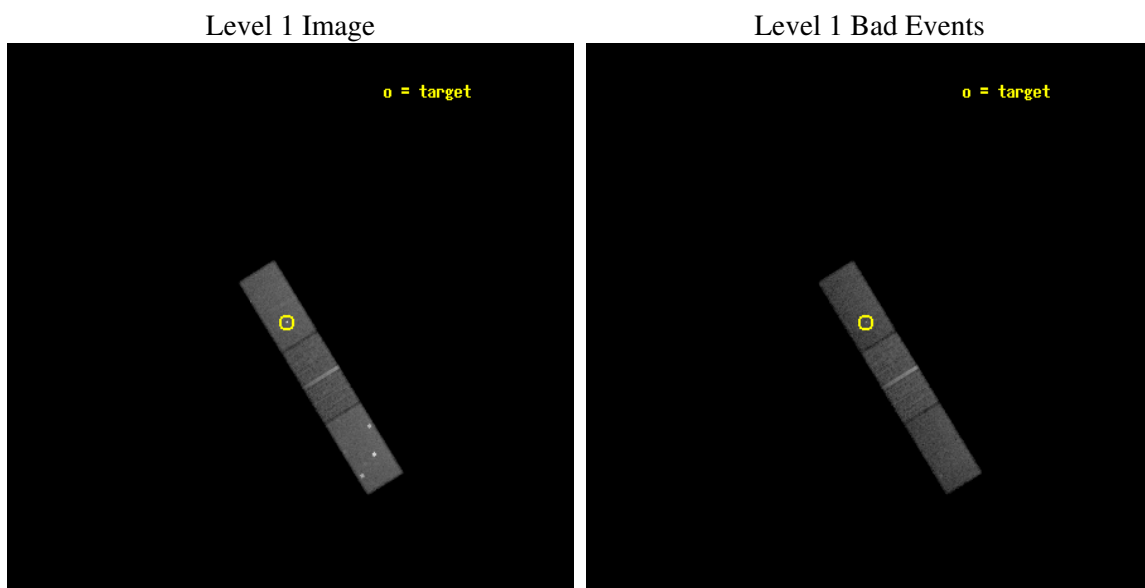
seq_num	700286
obs_id	2096
title	X-RAY STRUCTURES IN AND AROUND POWERFUL RADIO SOURCES
observer	Prof Diana Worrall
object	3C 275.1
dtcycle	0
cycle	P
ra_targ	190.990417
dec_targ	16.381444
ra_nom	190.98362217412
dec_nom	16.374175383718
roll_nom	238.37235834792
revision	2
ontime	25398.317905113
livetime	24763.143279982
ontime5	25398.317905113
ontime6	25396.67691496
ontime7	25398.317905113
l2events	104449



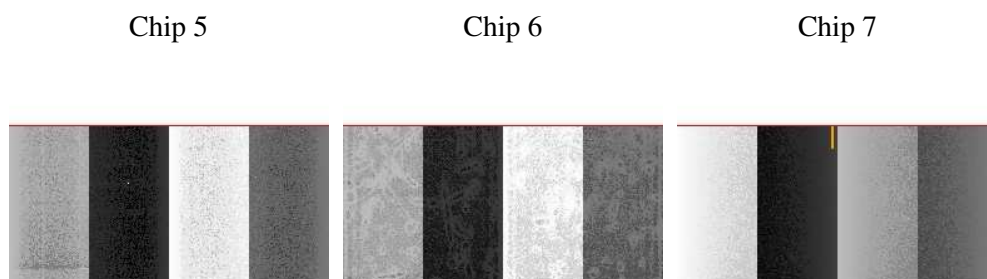
## 2 OBI

### 2.1 OBI

#### 2.1.1 Images



#### 2.1.2 Bias



### 2.1.3 Parameters

obi_num	0
ascdsver	7.6.9
caldbver	3.2.4
date	2006-11-25T04:29:20
revision	2

sched_exp_time	25000.000000
ontime	25596.617136881
ontime5	25596.617136881
ontime6	25594.976146728
ontime7	25596.617136881
l1events	338393

### 2.1.4 Events

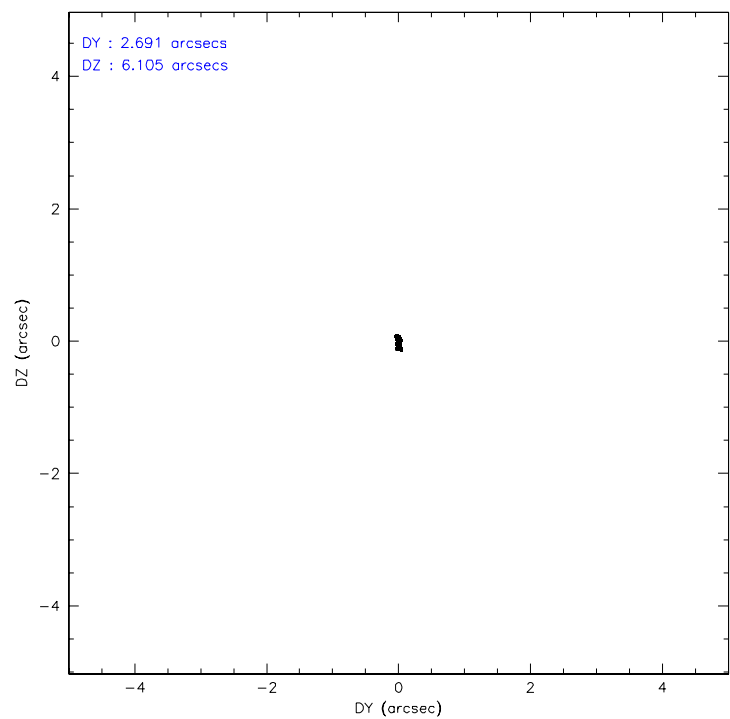
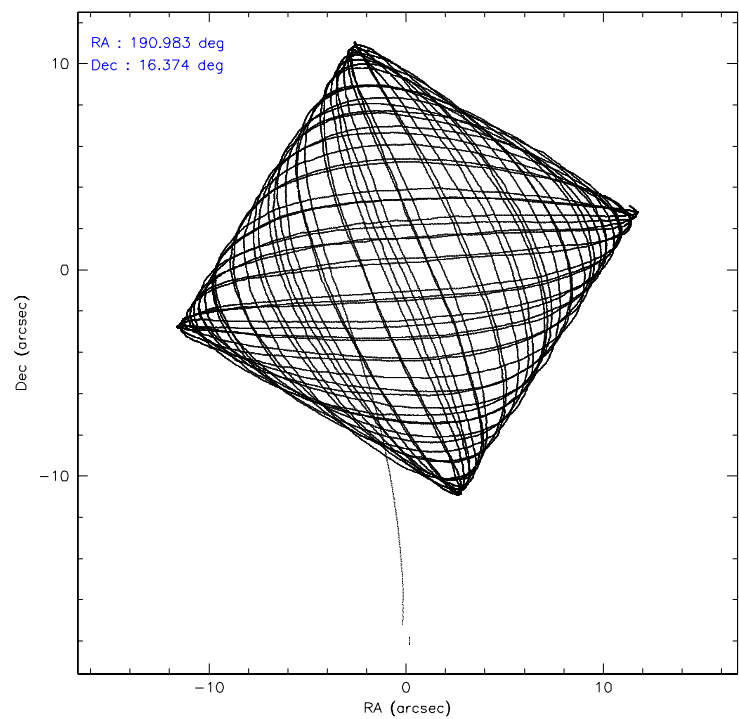
	<b>ccd 5</b>	<b>ccd 6</b>	<b>ccd 7</b>
level 1 events	132944	92878	112571
rejected events	65000	82606	64434
rejected %	48%	88%	57%

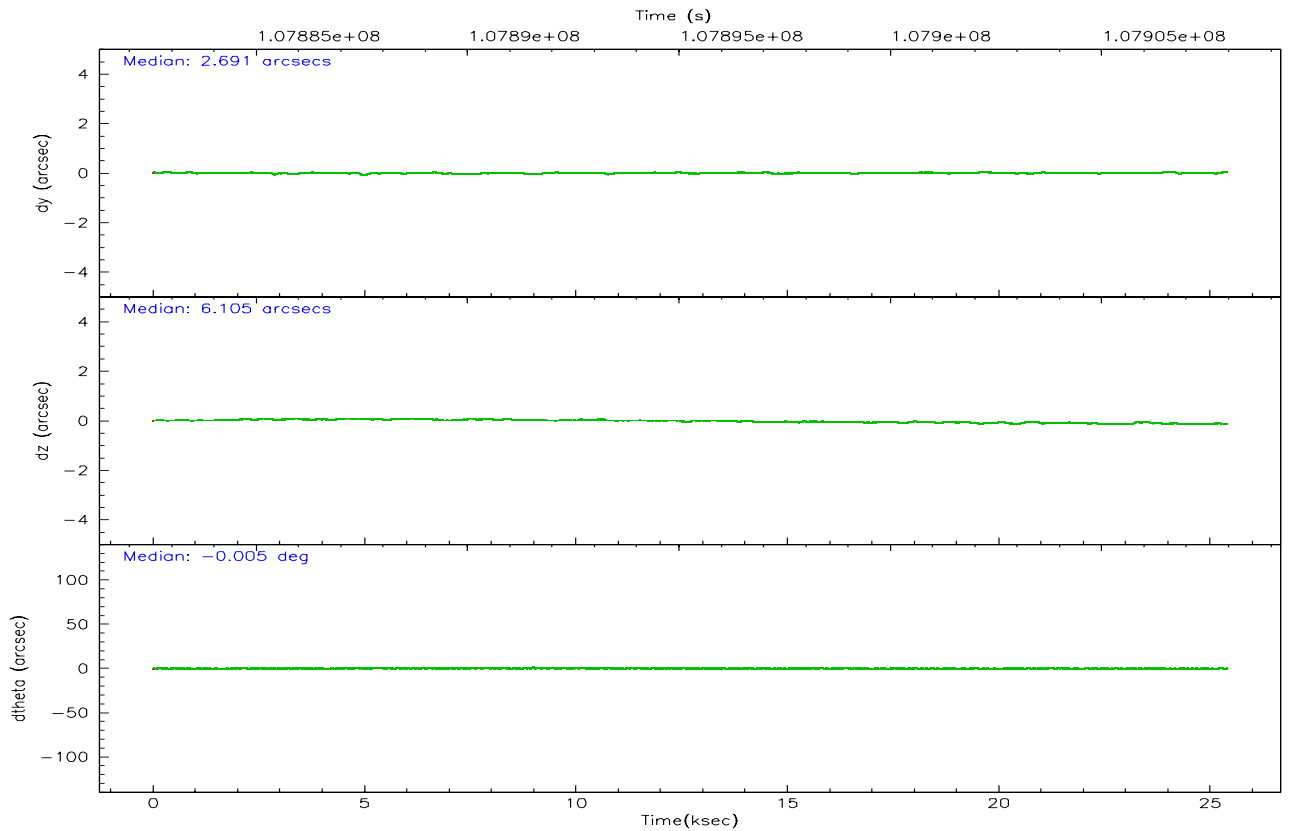
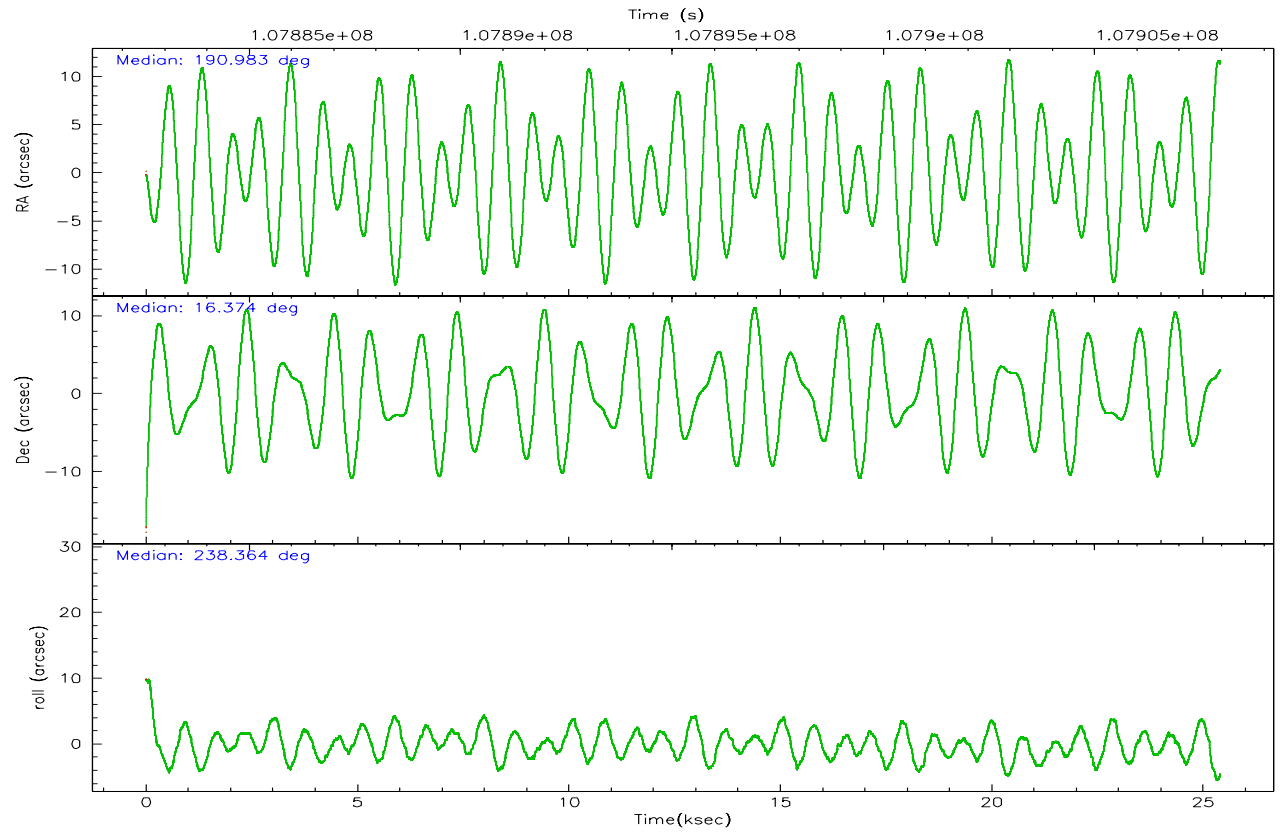
	<b>ccd 5</b>	<b>ccd 6</b>	<b>ccd 7</b>
grade 0 events	20325	3960	4624
	15%	4%	4%
grade 1 events	204	35	103
	0%	0%	0%
grade 2 events	16356	1931	12014
	12%	2%	10%
grade 3 events	1622	1275	3540
	1%	1%	3%
grade 4 events	1494	1284	3364
	1%	1%	2%
grade 5 events	5718	3493	7677
	4%	3%	6%
grade 6 events	28738	1891	24957
	21%	2%	22%
grade 7 events	58487	79009	56292
	43%	85%	50%

## 2.2 Compared Parameters

Parameter	Planned	Actual	Parameter	Planned	Actual
Instrument	ACIS	ACIS	Obspar format version number	6	6
Detector	ACIS-567	ACIS-567	Obspar file type	PREDICTED	ACTUAL
Grating	NONE	NONE	Obspar update status	NONE	UPDATED
Data mode	FAINT	FAINT	Number of optional ACIS chips dropped	0	0
Observation mode	POINTING	POINTING	On-chip summing requested	N	N
Pointing RA	190.984126	190.9836221741204	Subarray requested	1/2	1/2
Pointing Dec	16.401453	16.37417538371753	Subarray start row	0	257
Pointing Roll	238.215592	238.3723583479249	Subarray row count	1024	512
SIM focus pos (mm)	-0.684267	-0.6828225247311905	Alternating exposures requested	N	N
SIM defocus (mm)	0	0.001444936568705701	Primary exposure time	0.000000	1.6
SIM translation stage pos (mm)	-190.132523	-190.1400660498719			
SIM translation stage offset (mm)	0	0.00754346686406393			
Observation start time	107882964.184000	107881890.31111			
Observation start date	2001-06-02T15:28:20	2001-06-02T15:11:30			
Observation end time	107907964.184000	107908363.49964			
Observation end date	2001-06-02T22:25:00	2001-06-02T22:32:43			
Read mode	TIMED	TIMED			

## 2.3 Aspect





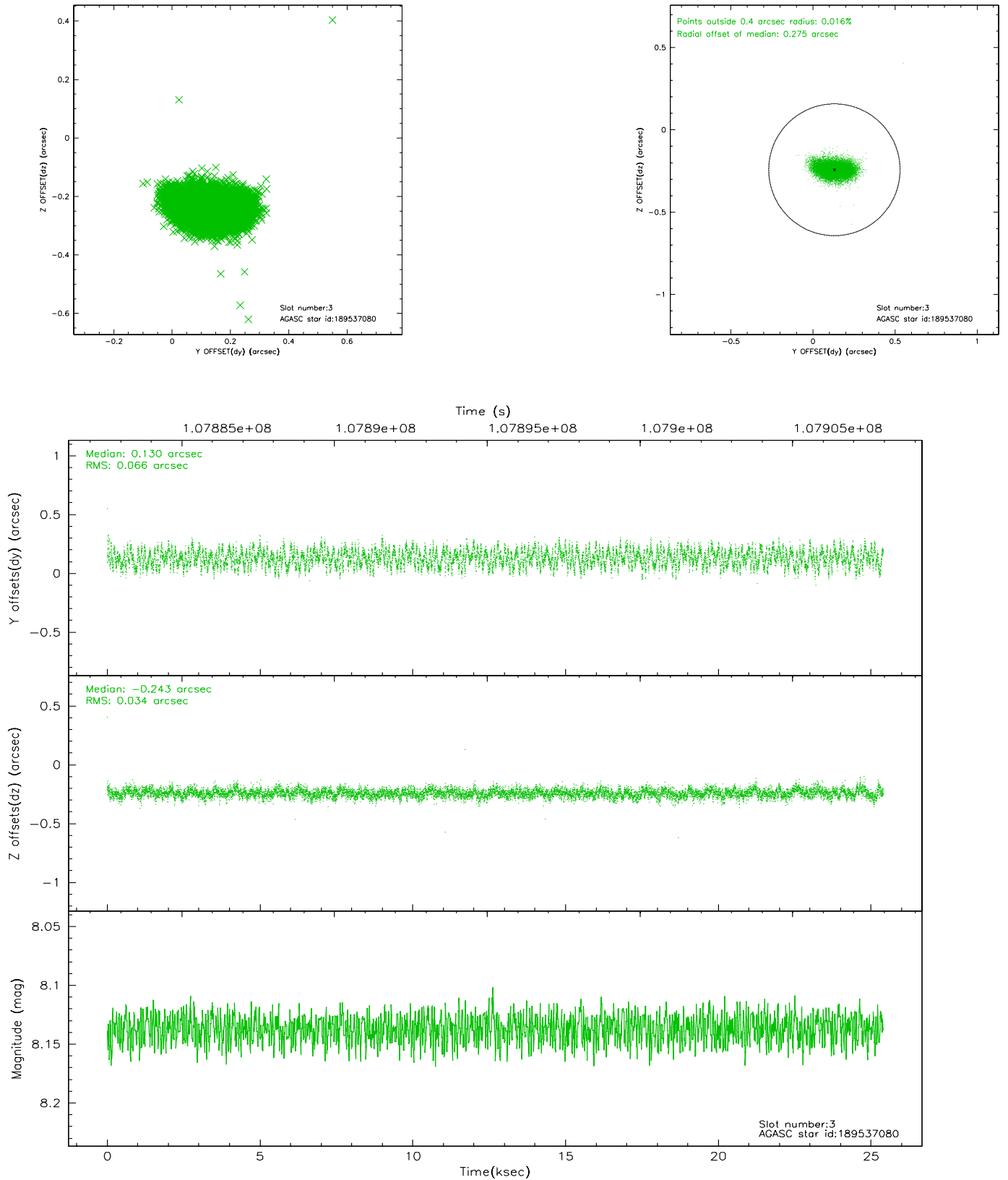
### Slot Statistics

slot	status	id	mag	n_pts	med_dy	med_dz	dr1	dr2	ra	dec	mean_y	mean_z
0	FID	ACIS-S-2	7.11	6195	-0.012	0.039	0.007	0.011	0.000000	0.000000	-755.30	-1727.21
1	FID	ACIS-S-4	7.20	6195	-0.094	-0.005	0.005	0.010	0.000000	0.000000	2157.80	181.17
2	FID	ACIS-S-5	7.24	6194	0.074	-0.026	0.006	0.010	0.000000	0.000000	-1807.95	174.87
3	GUIDE	189537080	8.14	12387	0.130	-0.243	0.079	0.129	190.121612	16.279339	1937.88	-2304.50
4	GUIDE	189548208	8.77	12385	-0.129	0.106	0.088	0.147	191.620676	16.521429	-1528.40	1638.87
5	GUIDE	189542152	9.12	12385	0.106	0.100	0.083	0.134	190.948751	15.714368	2166.34	1200.13
6	GUIDE	189548192	9.64	12380	-0.084	0.098	0.118	0.186	191.748178	16.492067	-1671.83	2068.36
7	GUIDE	189545696	9.97	12384	-0.026	-0.062	0.104	0.175	191.205591	16.321408	-159.63	803.01

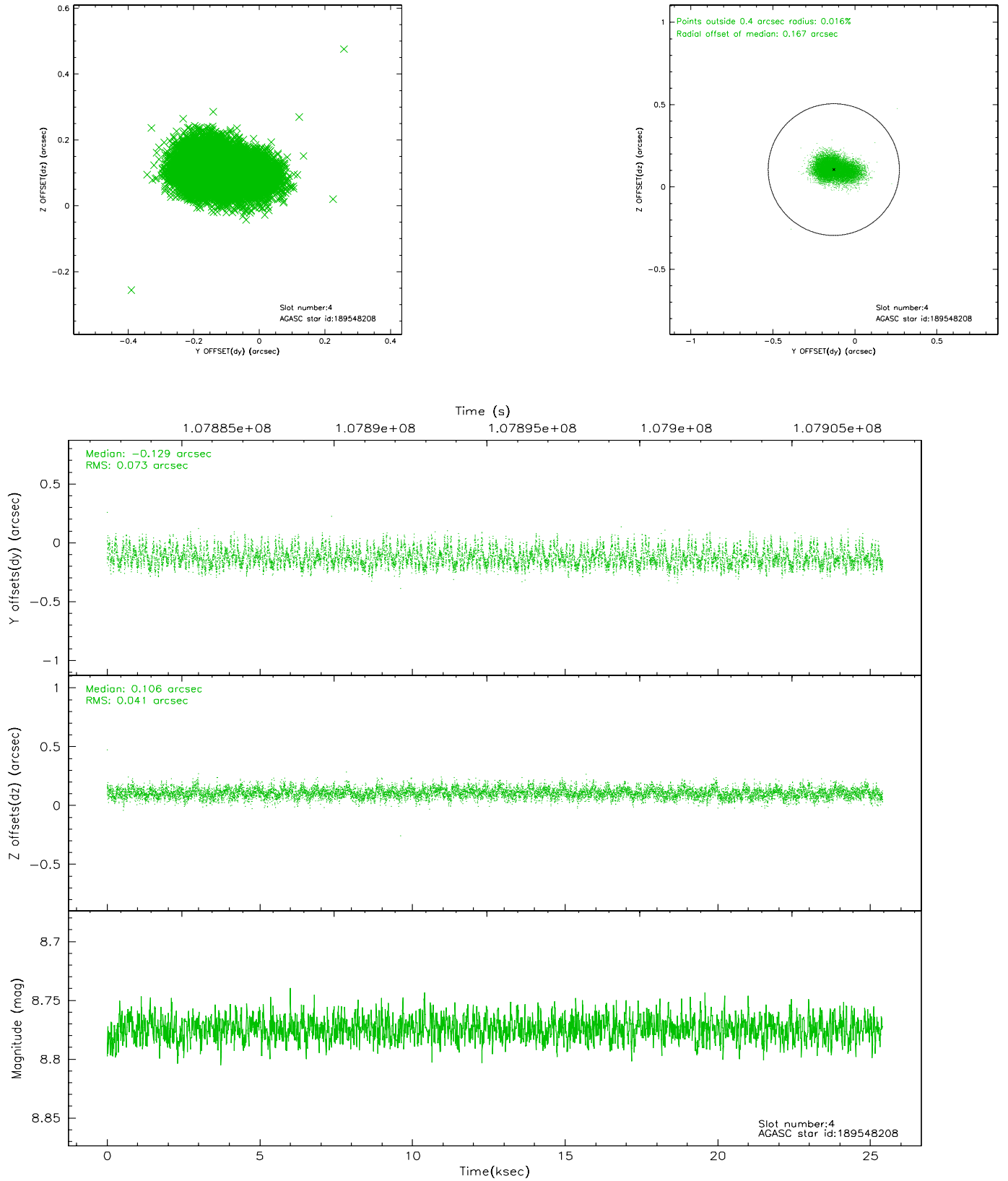


## 2.4 Star Slots

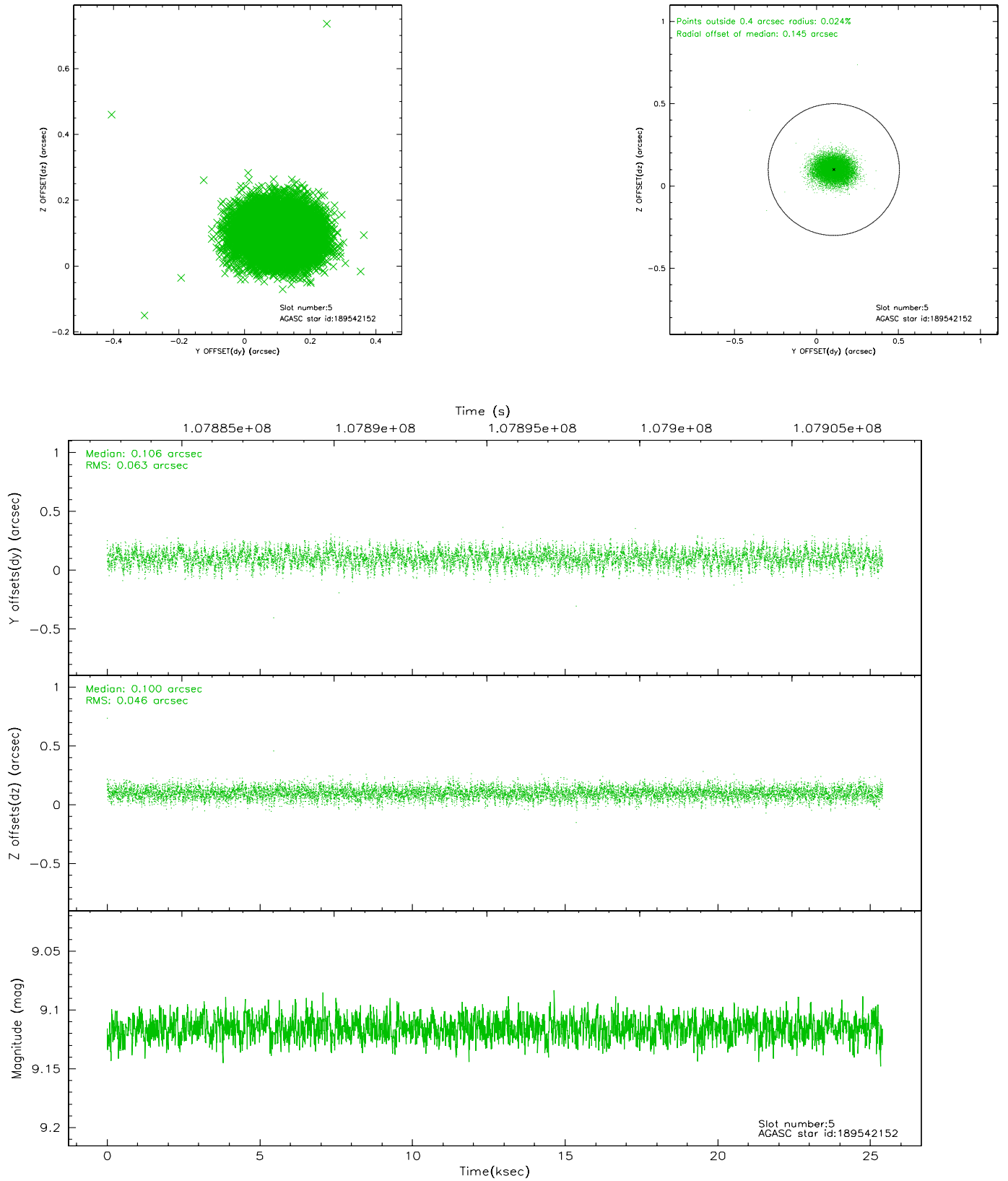
### 2.4.1 Slot 3



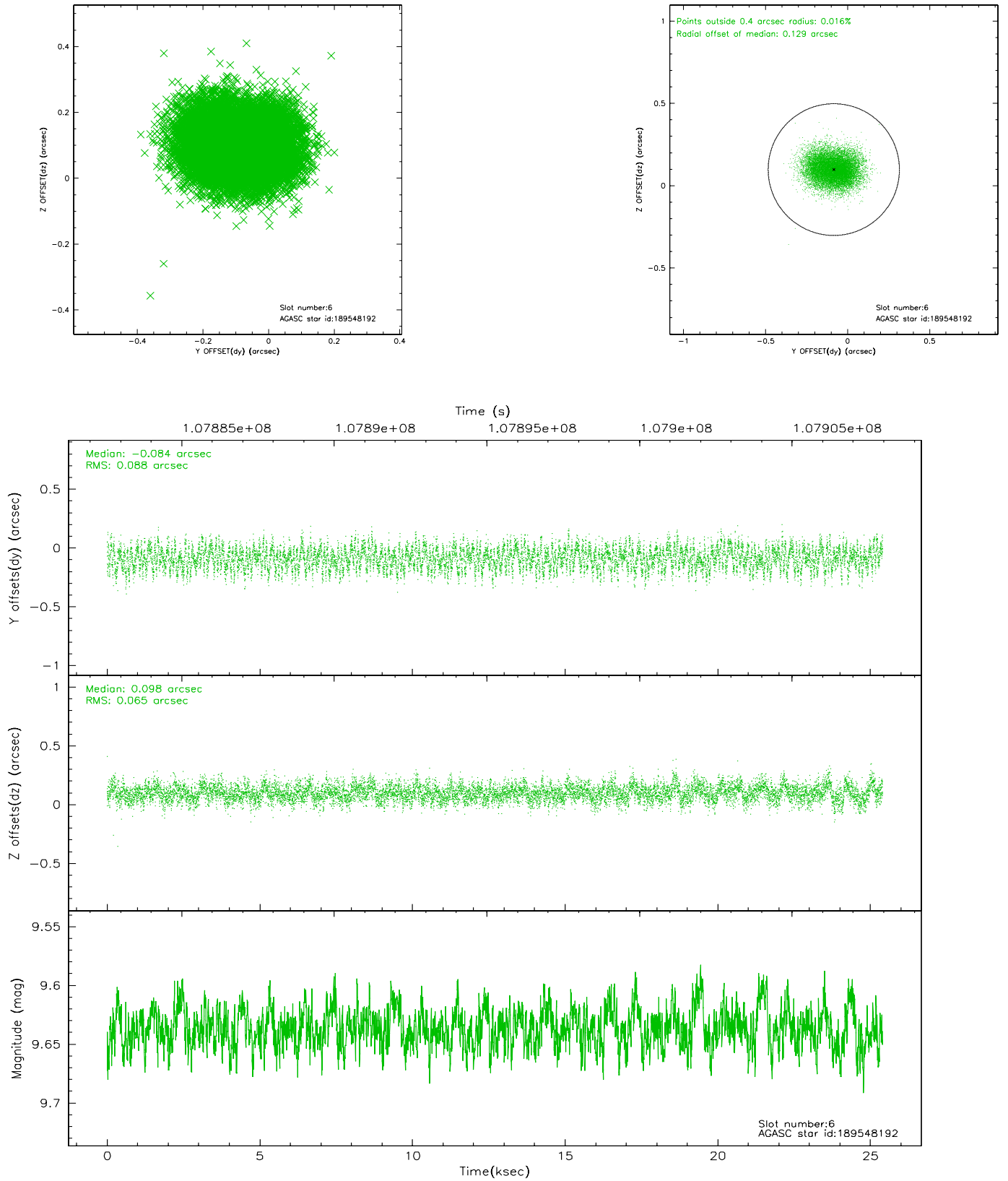
## 2.4.2 Slot 4



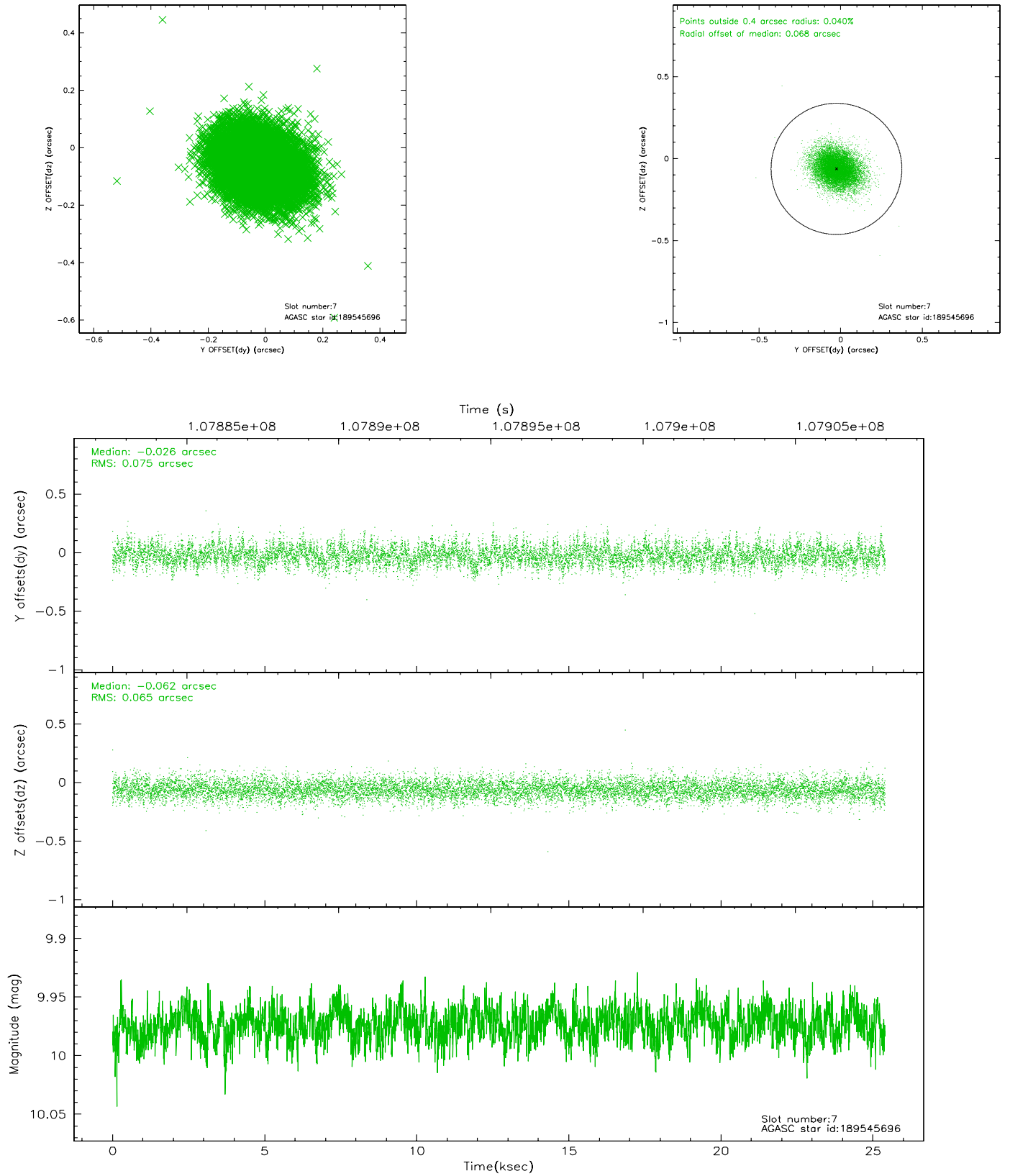
### 2.4.3 Slot 5



## 2.4.4 Slot 6

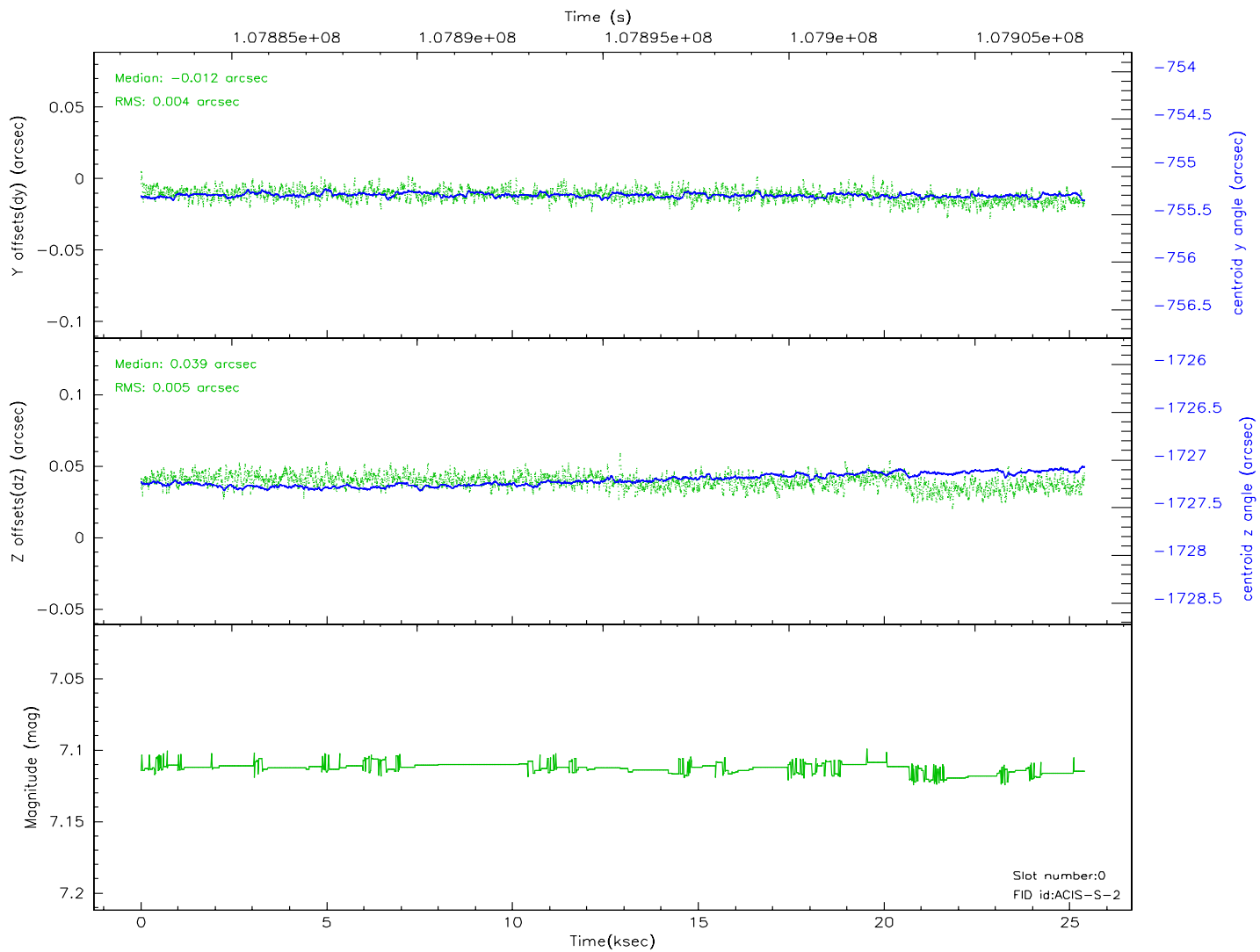
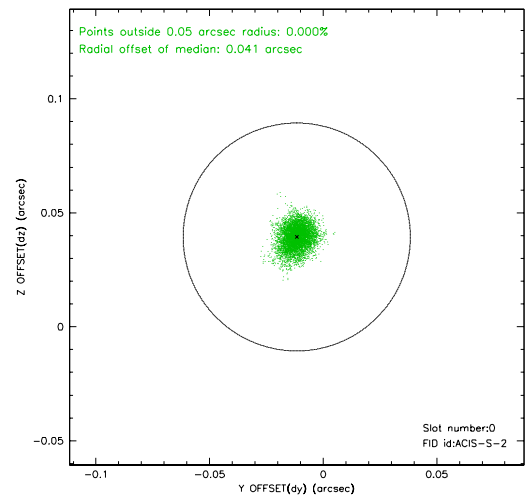
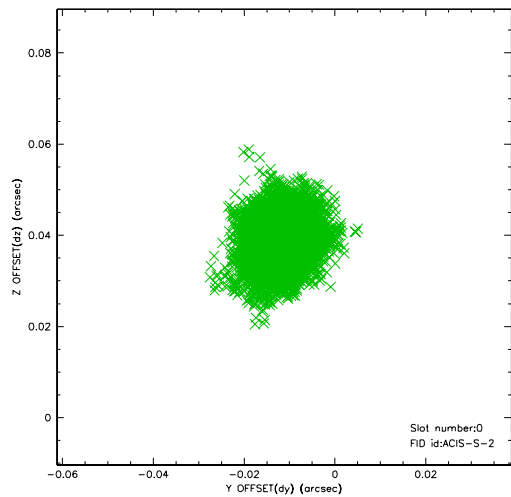


## 2.4.5 Slot 7

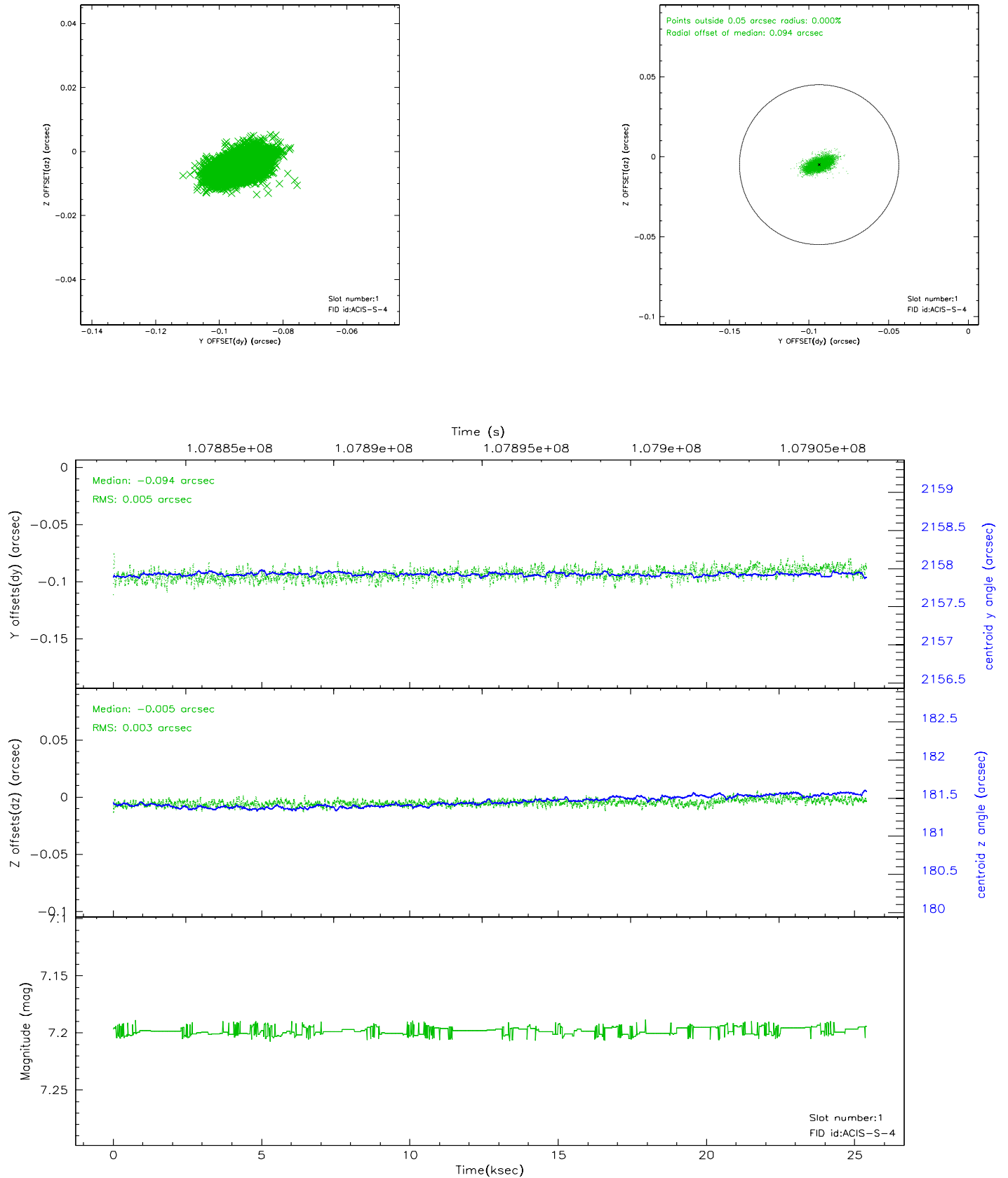


## 2.5 FID Slots

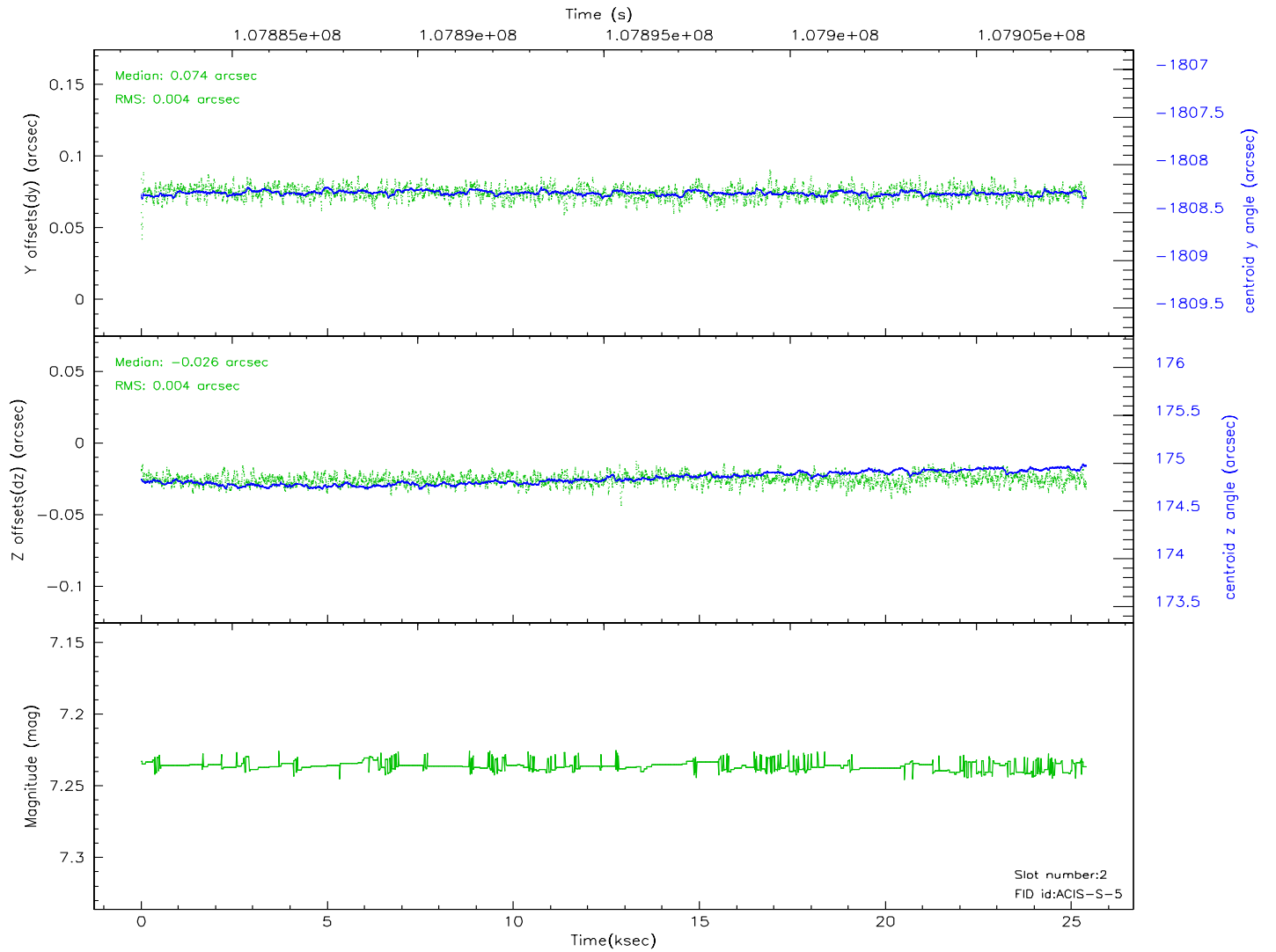
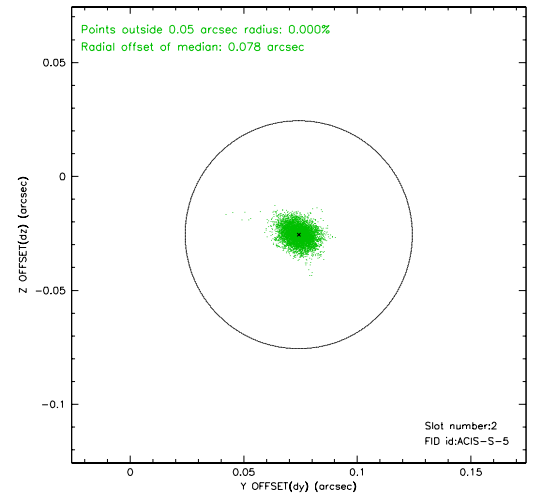
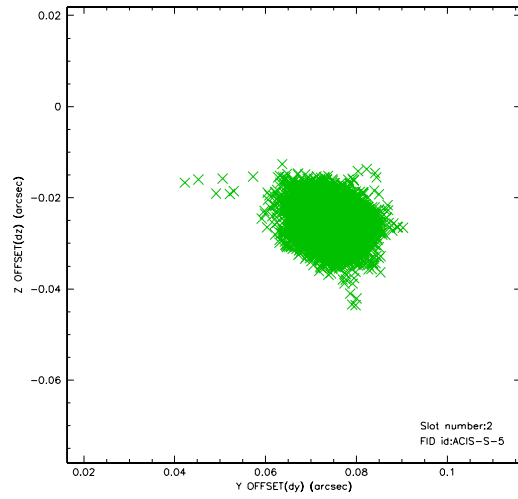
### 2.5.1 Slot 0



## 2.5.2 Slot 1

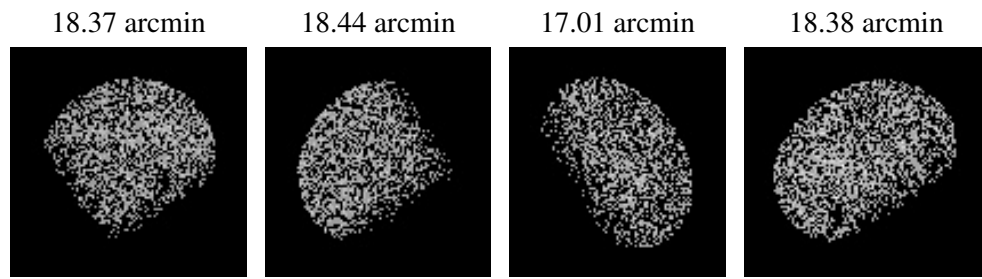


## 2.5.3 Slot 2





### 3 Point Sources



## A Summary

### A.1 Status

V&V Scientist	Jen Lauer
V&V Date (YYYY-MM-DD)	2006.11.27
V&V Edition	1
V&V Disposition and Status	OK
V&V Charge Time	25.4

### A.2 Comments