

V&V Reference Report

L2 ASCDS Version : 7.6.9

Observation 2086 - L2 Version 001
Chandra X-Ray Center

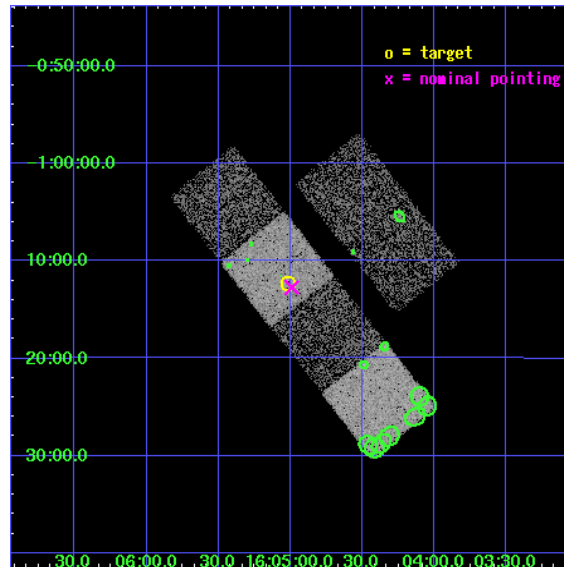
L2 Processing Date : Dec 8 2006

Contents

1	Front	2
2	OBI	3
2.1	OBI	3
2.1.1	Images	3
2.1.2	Bias	3
2.1.3	Parameters	4
2.1.4	Events	4
2.2	Compared Parameters	5
2.3	Aspect	6
2.4	Star Slots	9
2.4.1	Slot 3	9
2.4.2	Slot 4	10
2.4.3	Slot 5	11
2.4.4	Slot 6	12
2.5	FID Slots	13
2.5.1	Slot 0	13
2.5.2	Slot 1	14
2.5.3	Slot 2	15
3	Point Sources	16
A	Summary	17
A.1	Status	17
A.2	Comments	17

1 Front

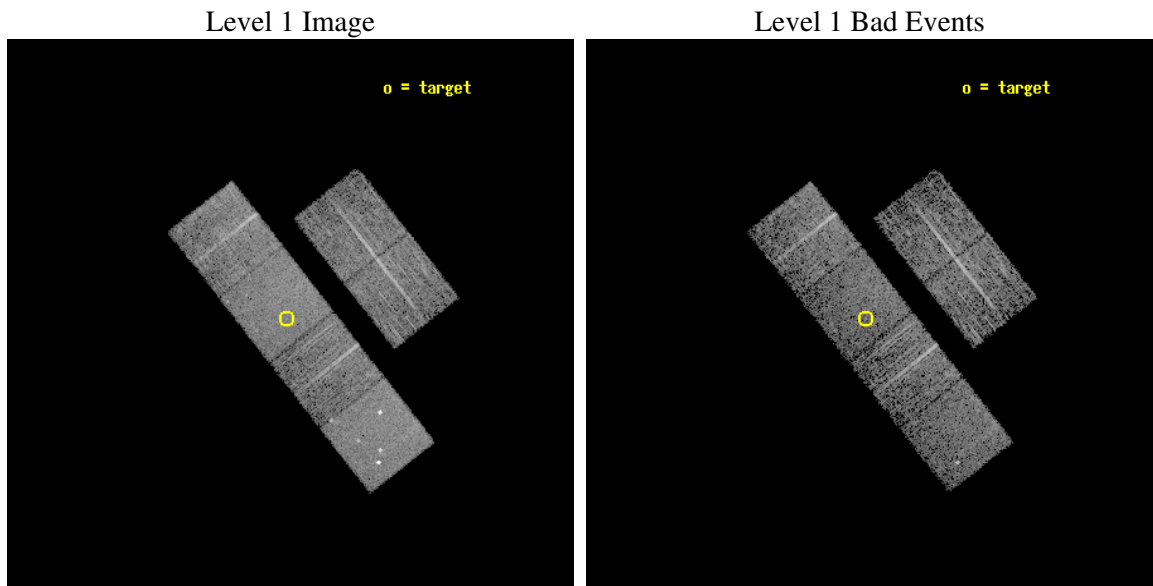
seq_num	700276
obs_id	2086
title	AN X-RAY STUDY OF THE MOST DISTANT QUASARS FROM THE SLOAN DIGITAL SKY SURVEY
observer	Prof. William Brandt
object	SDSS160501-011220
dtcycle	0
cycle	P
ra_targ	241.255
dec_targ	-1.205556
ra_nom	241.24766704874
dec_nom	-1.2120789239006
roll_nom	231.82606564637
revision	2
ontime	4697.600004375
livetime	4638.1161645645
ontime2	4697.600004375
ontime3	4697.600004375
ontime5	4697.600004375
ontime6	4697.600004375
ontime7	4697.600004375
ontime8	4697.600004375
l2events	45306



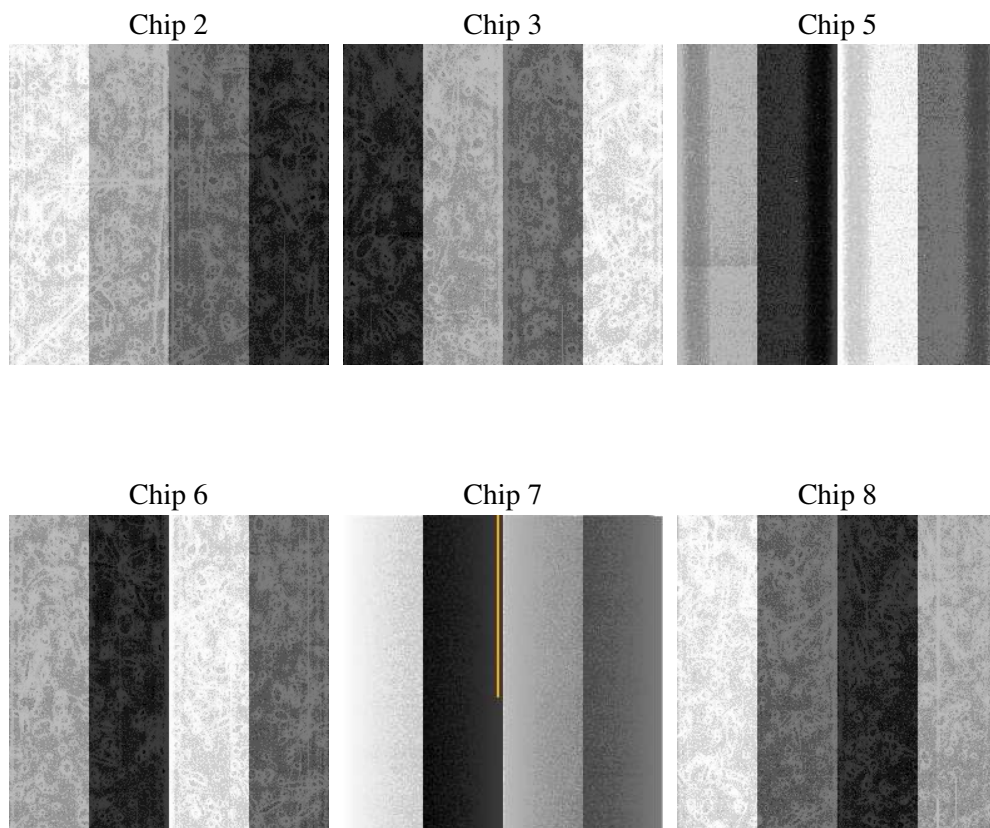
2 OBI

2.1 OBI

2.1.1 Images



2.1.2 Bias



2.1.3 Parameters

obi_num	0
ascdsver	7.6.9
caldsver	3.2.4
date	2006-12-08T12:35:00
revision	2

sched_exp_time	4700.000000
ontime	4702.6891036332
ontime2	4702.6891036332
ontime3	4702.6891036332
ontime5	4702.6891335398
ontime6	4702.6891036332
ontime7	4702.6891036332
ontime8	4702.6891036332
l1events	222467

2.1.4 Events

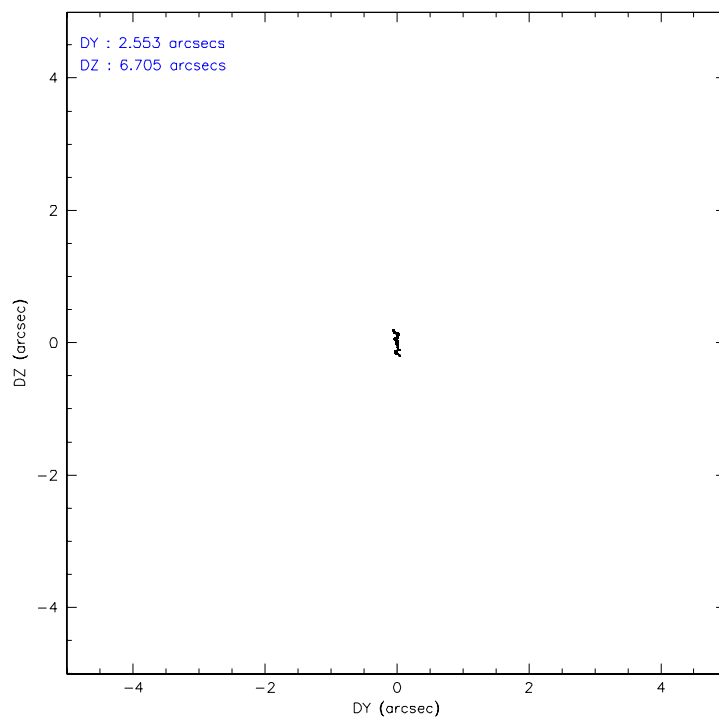
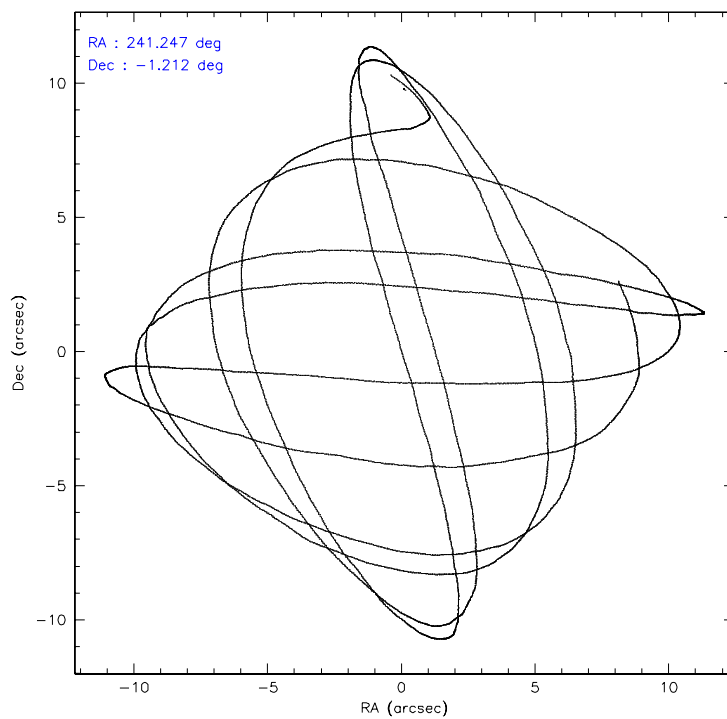
	ccd 2	ccd 3	ccd 5	ccd 6	ccd 7	ccd 8
level 1 events	33714	31318	45622	32189	40340	39284
rejected events	30112	27892	24480	28541	25007	31748
rejected %	89%	89%	53%	88%	61%	80%

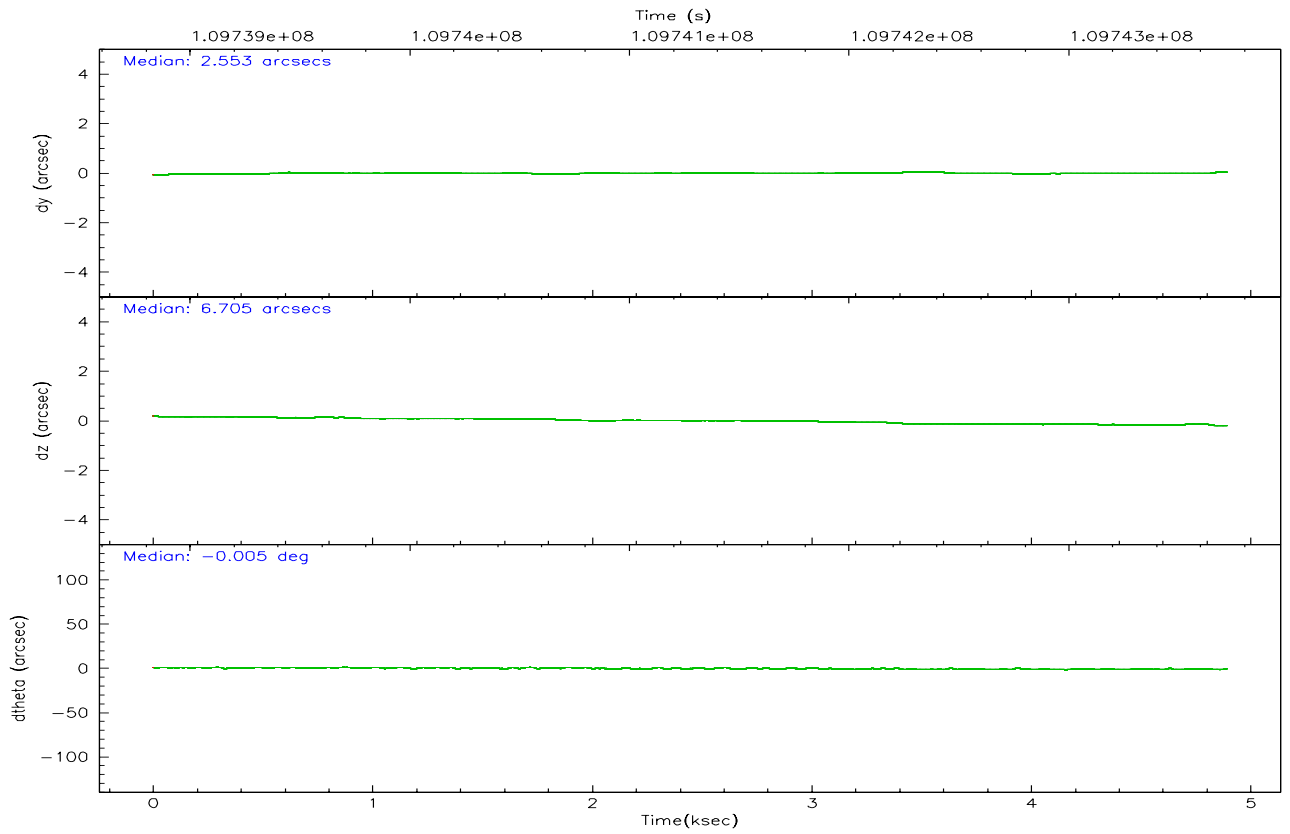
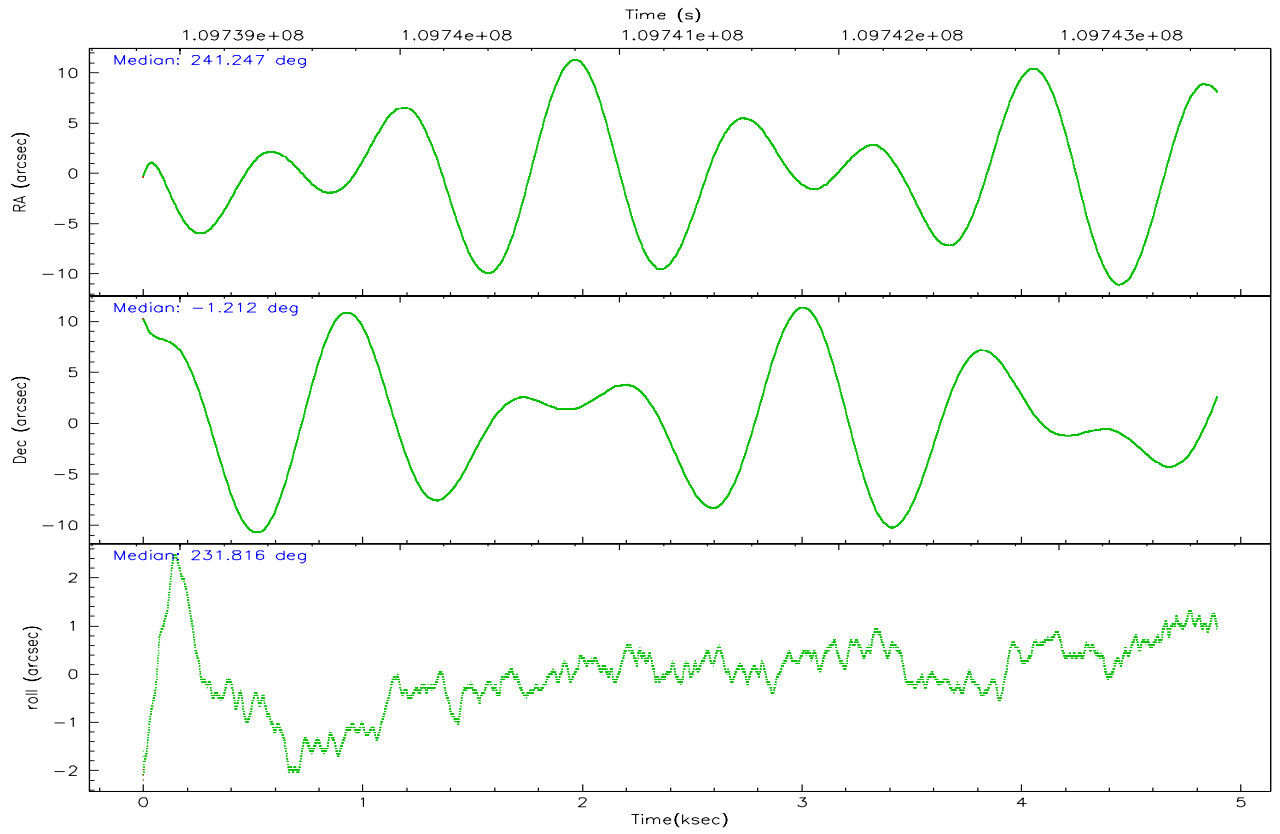
	ccd 2	ccd 3	ccd 5	ccd 6	ccd 7	ccd 8
grade 0 events	1536	1489	3476	1468	993	2537
	4%	4%	7%	4%	2%	6%
grade 1 events	15	15	244	5	26	20
	0%	0%	0%	0%	0%	0%
grade 2 events	732	674	6189	728	3750	1555
	2%	2%	13%	2%	9%	3%
grade 3 events	343	344	447	373	871	777
	1%	1%	0%	1%	2%	1%
grade 4 events	344	306	452	354	816	743
	1%	0%	0%	1%	2%	1%
grade 5 events	1123	1227	2119	1316	2737	1679
	3%	3%	4%	4%	6%	4%
grade 6 events	657	618	10607	731	8919	1931
	1%	1%	23%	2%	22%	4%
grade 7 events	28964	26645	22088	27214	22228	30042
	85%	85%	48%	84%	55%	76%

2.2 Compared Parameters

Parameter	Planned	Actual	Parameter	Planned	Actual
Instrument	ACIS	ACIS	Obspar format version number	6	6
Detector	ACIS-235678	ACIS-235678	Obspar file type	PREDICTED	ACTUAL
Grating	NONE	NONE	Obspar update status	NONE	UPDATED
Data mode	FAINT	FAINT	Number of optional ACIS chips dropped	0	0
Observation mode	POINTING	POINTING	On-chip summing requested	N	N
Pointing RA	241.251286	241.2476670487395	Subarray requested	NONE	NONE
Pointing Dec	-1.184993	-1.212078923900597	Alternating exposures requested	N	N
Pointing Roll	231.669517	231.8260656463651	Primary exposure time	0.000000	3.2
SIM focus pos (mm)	-0.684267	-0.6828225247311905			
SIM defocus (mm)	0	0.001444936568705701			
SIM translation stage pos (mm)	-190.132523	-190.1400660498719			
SIM translation stage offset (mm)	0	0.00754346686406393			
Observation start time	109739024.184000	109738039.82095			
Observation start date	2001-06-24T03:02:40	2001-06-24T02:47:19			
Observation end time	109743724.184000	109744472.72121			
Observation end date	2001-06-24T04:21:00	2001-06-24T04:34:32			
Read mode	TIMED	TIMED			

2.3 Aspect



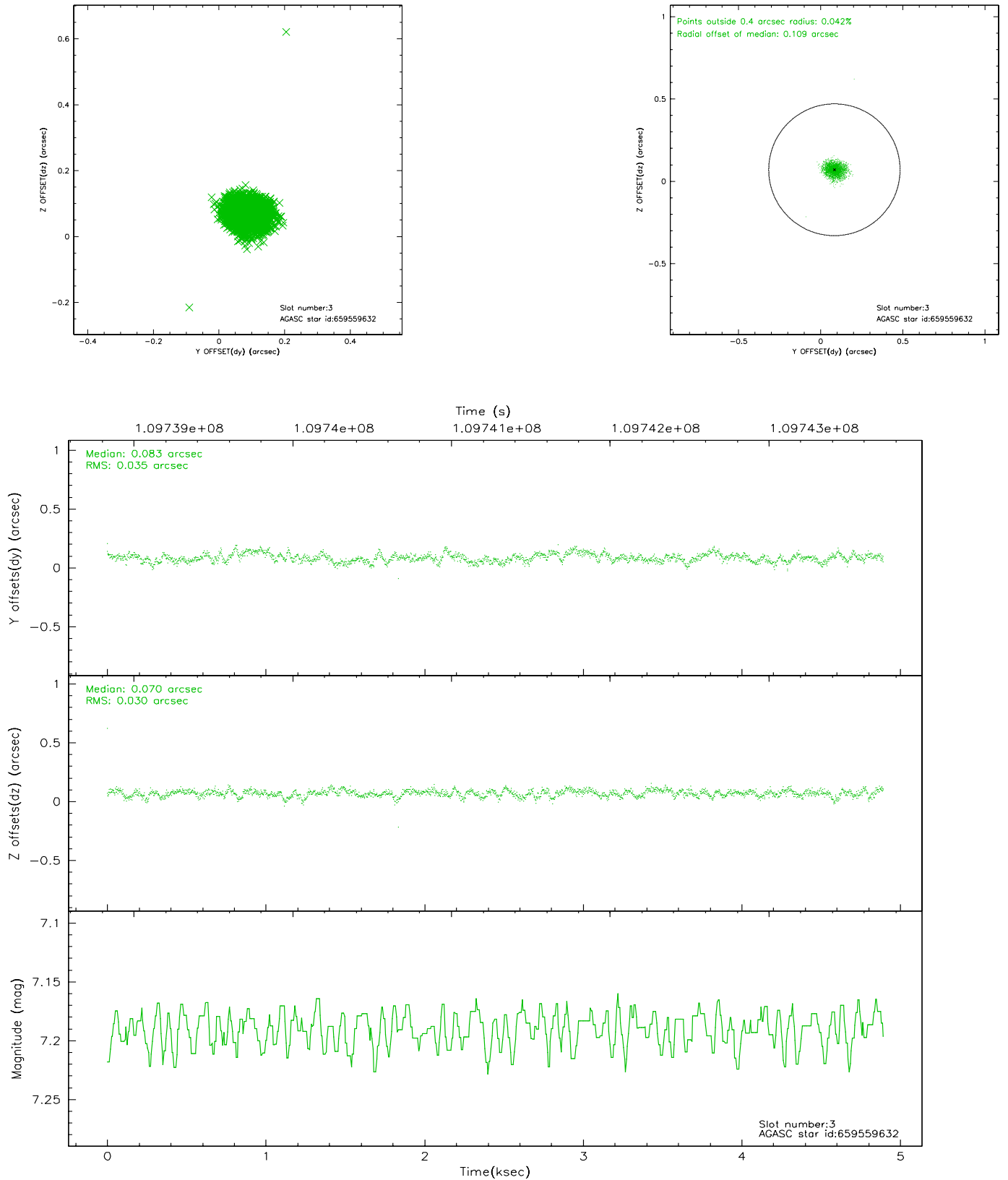


Slot Statistics

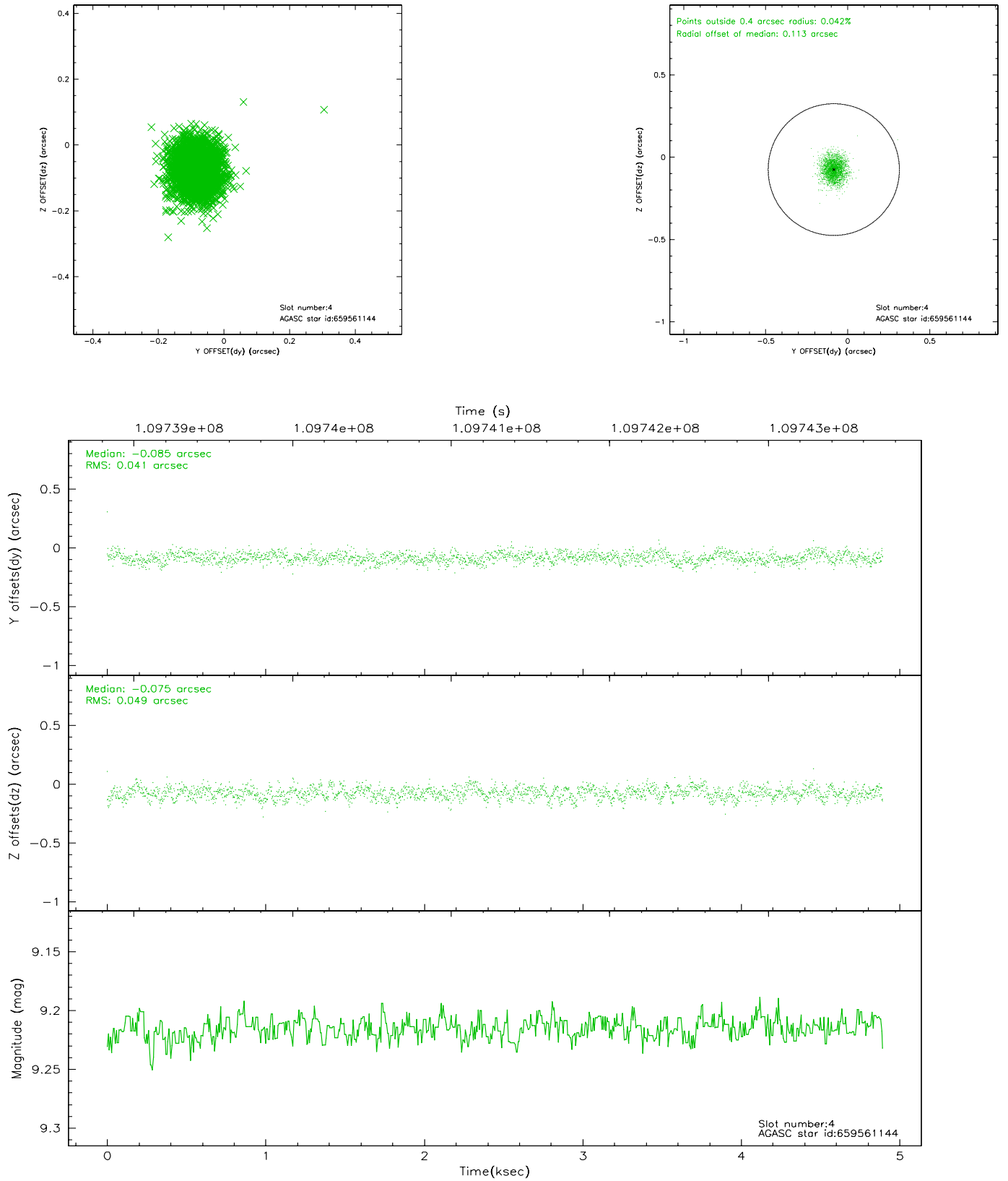
slot	status	id	mag	n_pts	med_dy	med_dz	dr1	dr2	ra	dec	mean_y	mean_z
0	FID	ACIS-S-2	7.11	1194	-0.012	0.025	0.007	0.010	0.000000	0.000000	-755.17	-1727.84
1	FID	ACIS-S-4	7.20	1194	-0.082	-0.001	0.006	0.010	0.000000	0.000000	2157.45	179.36
2	FID	ACIS-S-5	7.24	1194	0.062	-0.015	0.006	0.009	0.000000	0.000000	-1806.35	174.40
3	GUIDE	659559632	7.19	2387	0.083	0.070	0.048	0.076	241.172548	-1.160148	105.19	-276.88
4	GUIDE	659561144	9.22	2387	-0.085	-0.075	0.067	0.108	241.115844	-0.281180	-2250.41	-2400.15
5	GUIDE	659692296	9.05	2386	0.029	-0.005	0.089	0.141	241.897508	-0.946713	-2117.21	1292.48
6	GUIDE	659691536	8.89	2388	-0.035	0.006	0.082	0.136	242.007729	-1.036235	-2110.41	1805.14
7	OMITTED		0.00	0	0.000	0.000	0.000	0.000	0.000000	0.000000	0.00	0.00

2.4 Star Slots

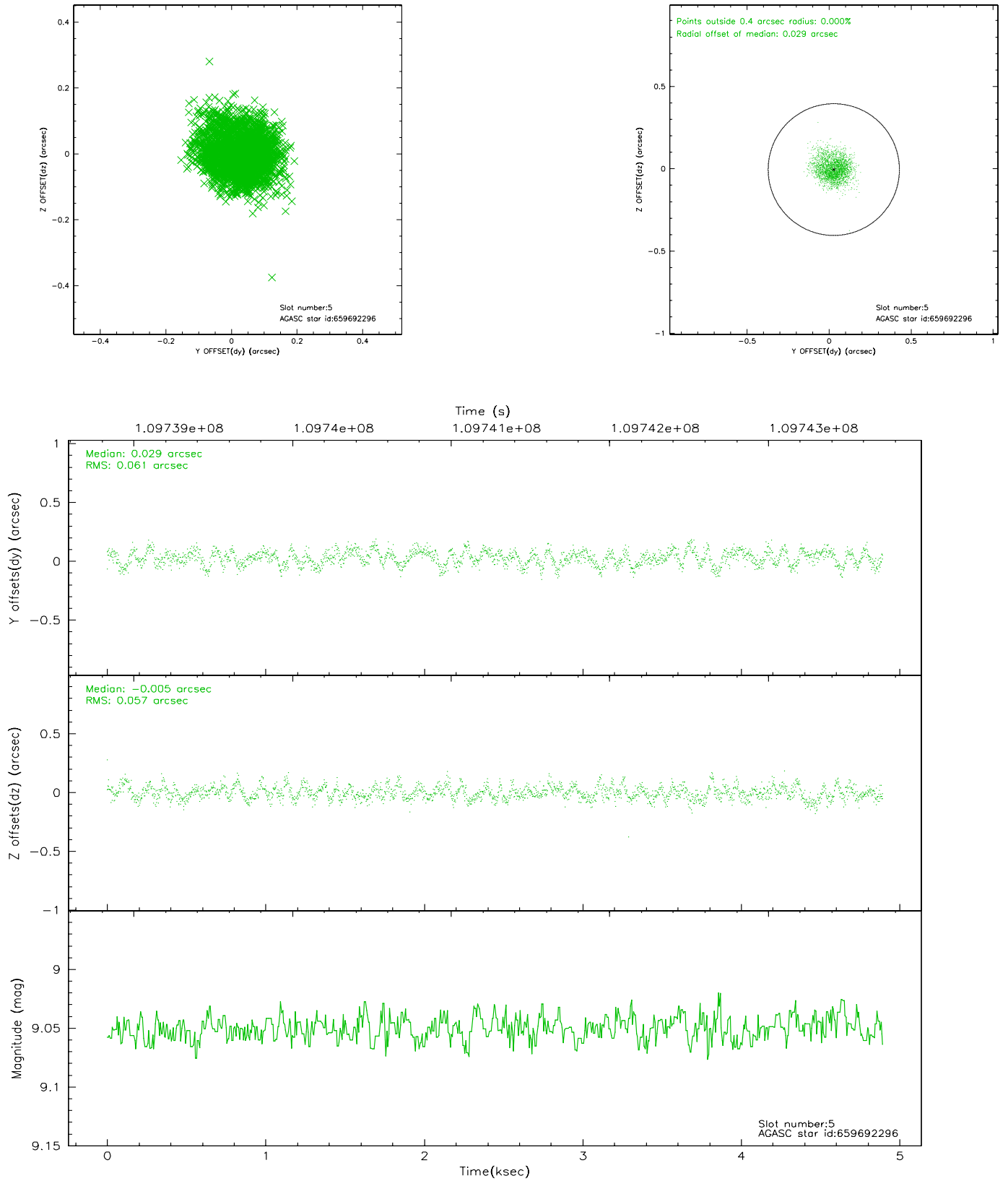
2.4.1 Slot 3



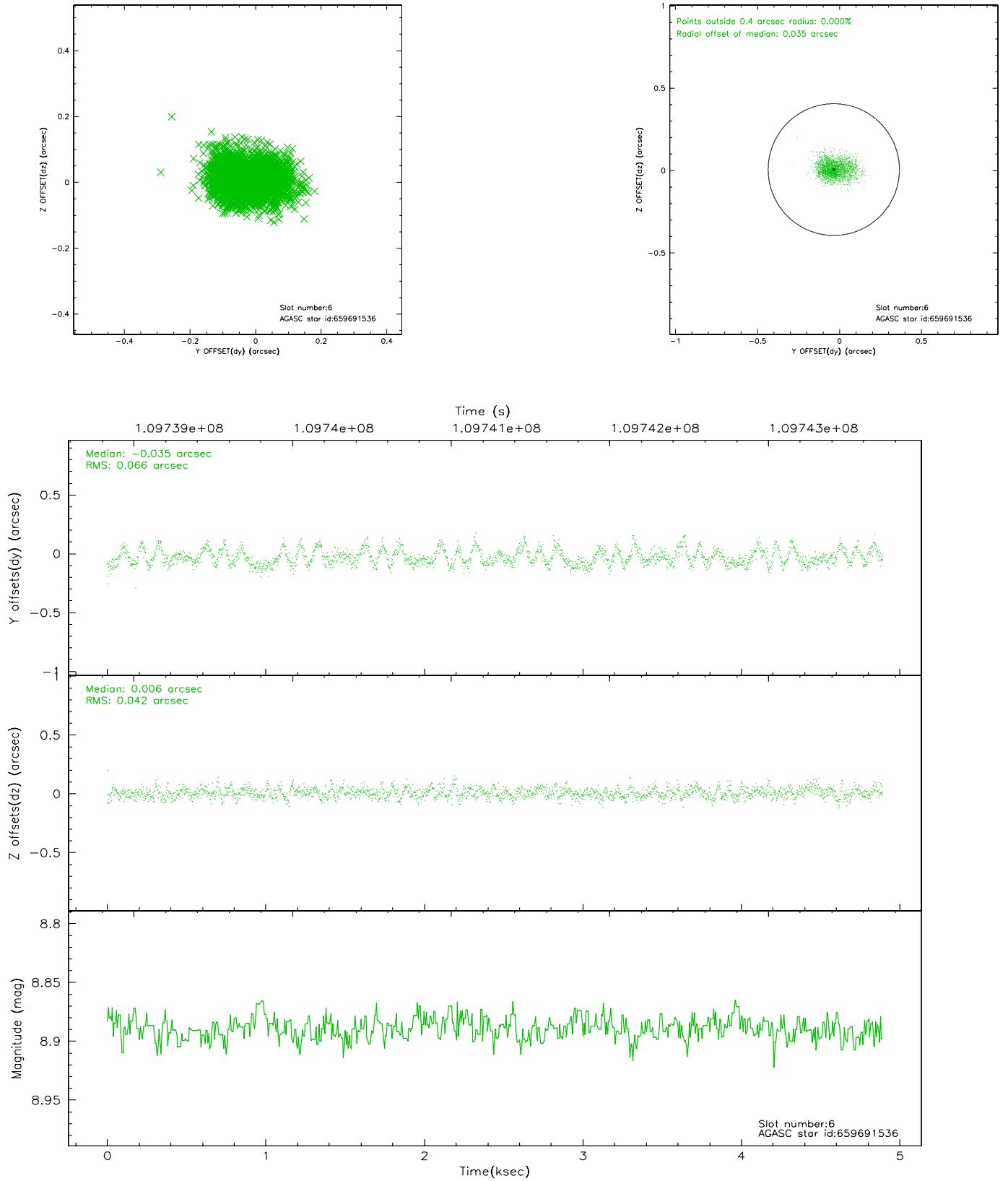
2.4.2 Slot 4



2.4.3 Slot 5

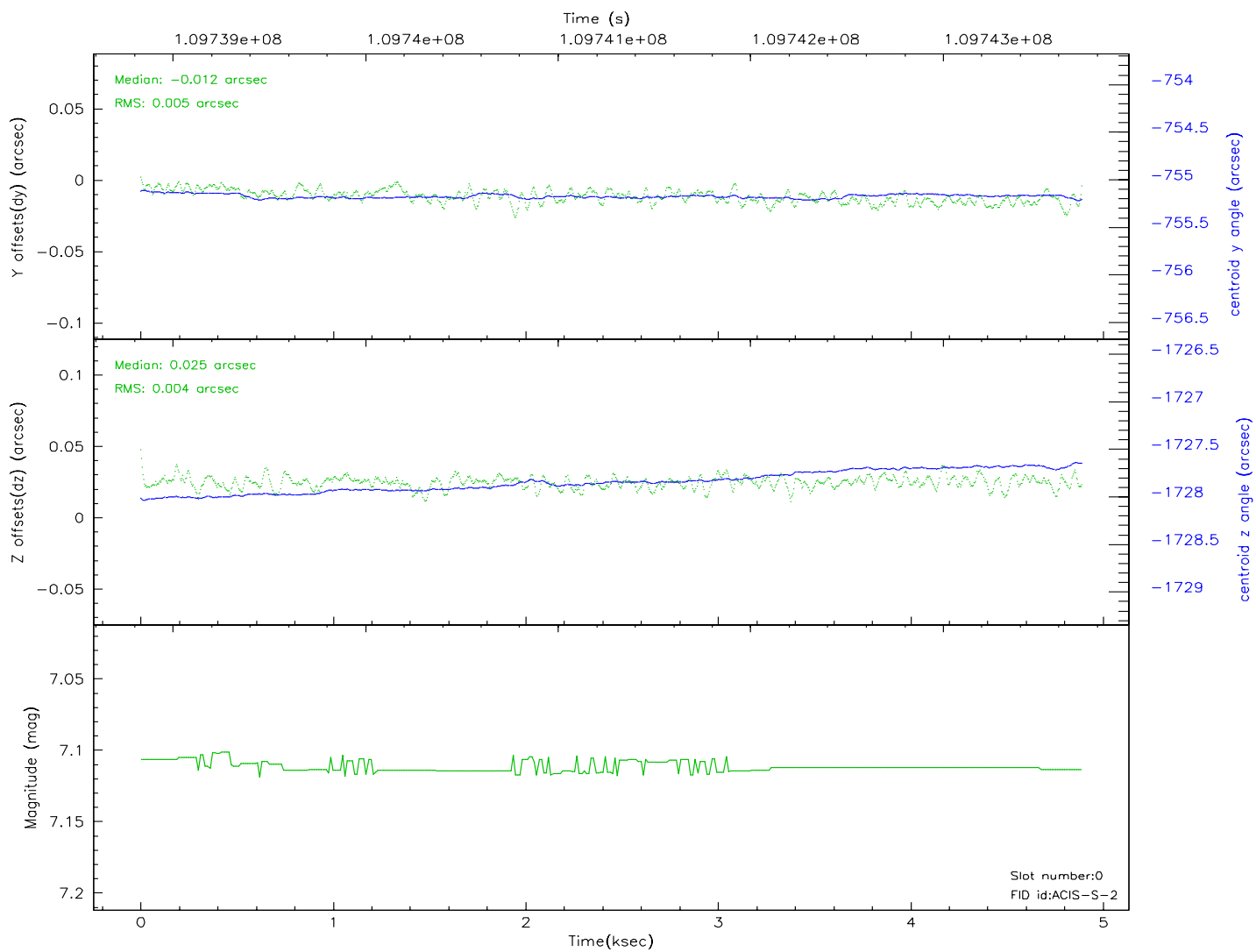
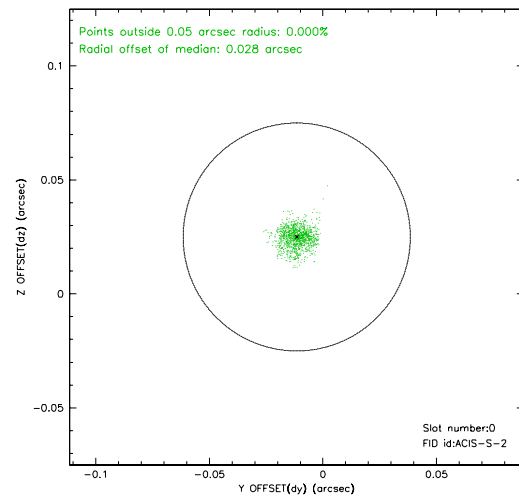
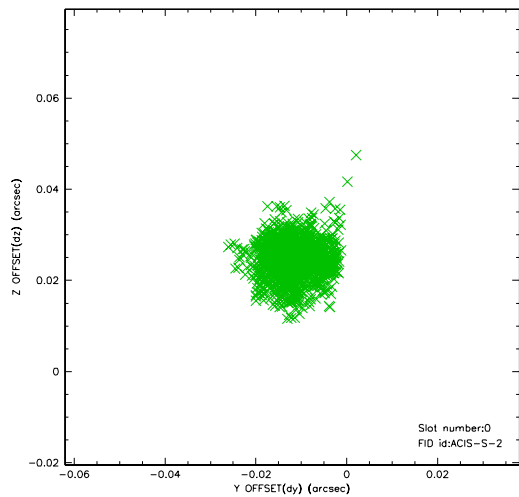


2.4.4 Slot 6

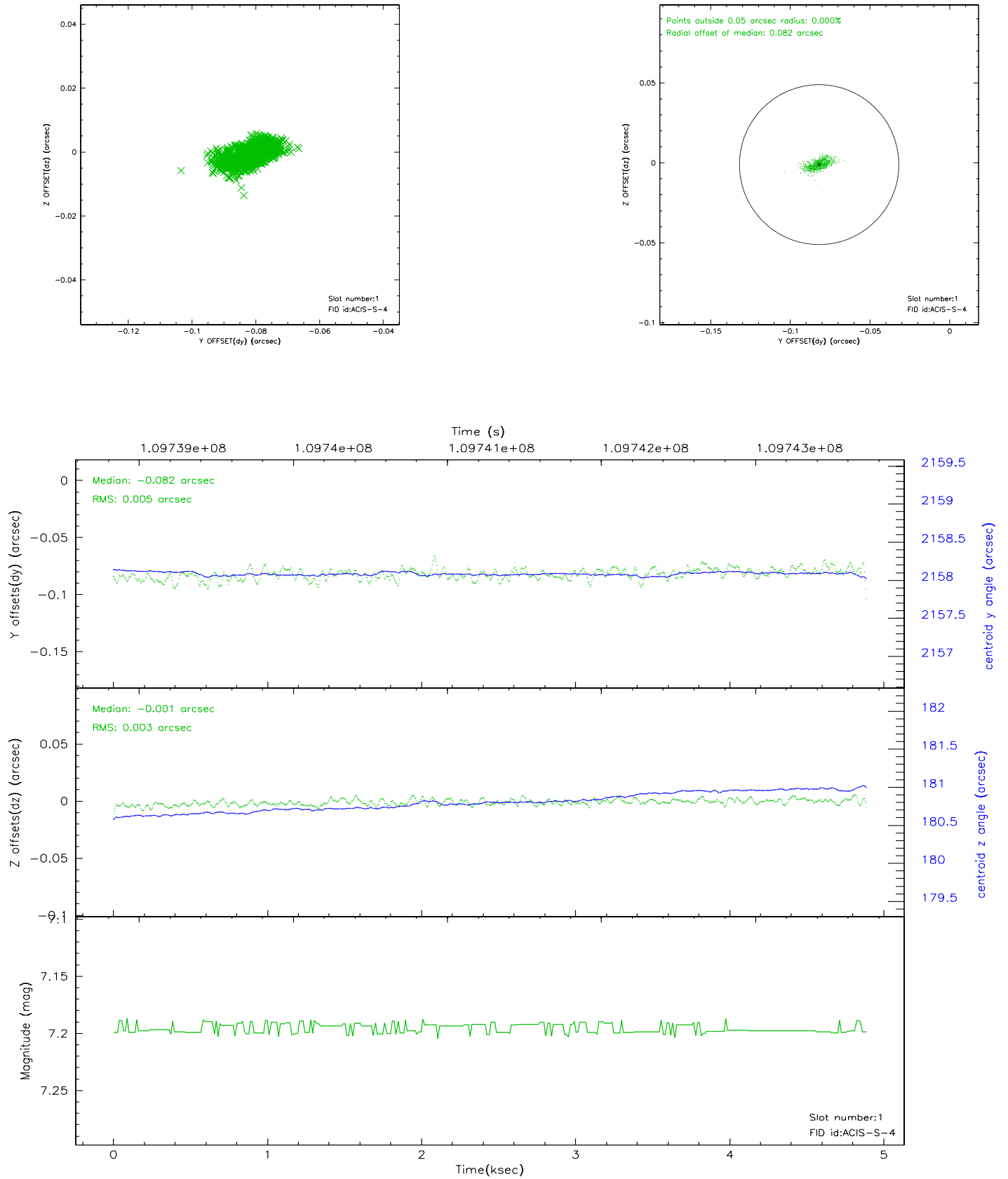


2.5 FID Slots

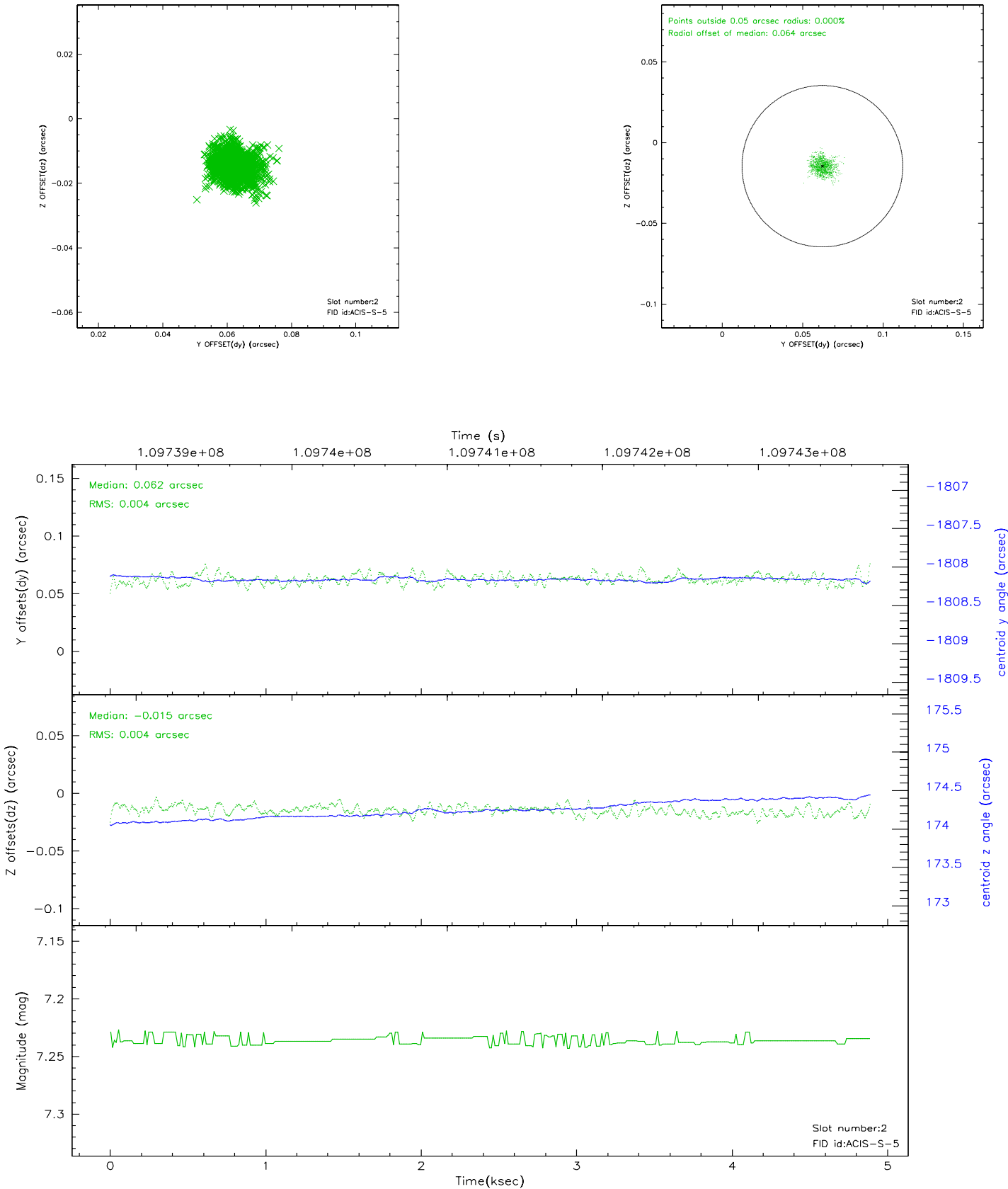
2.5.1 Slot 0



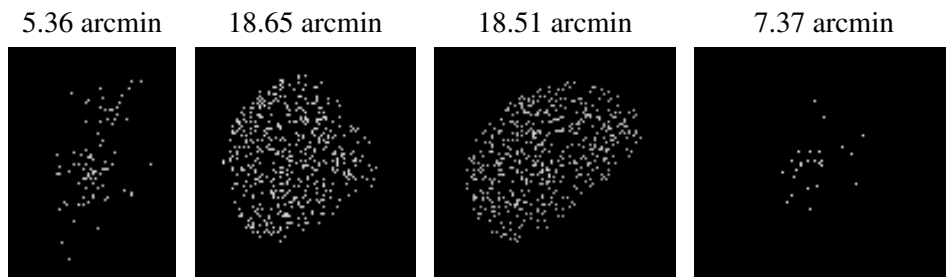
2.5.2 Slot 1



2.5.3 Slot 2



3 Point Sources



A Summary

A.1 Status

V&V Scientist	Beth Sundheim
V&V Date (YYYY-MM-DD)	2006.12.08
V&V Edition	1
V&V Disposition and Status	OK
V&V Charge Time	4.7

A.2 Comments

The guide star in slot 7 was removed from the aspect solution due to poor data quality. The aspect solution is not expected to be degraded by removing one guide star or fid light from the solution.