

# V&V Reference Report

## L2 ASCDS Version : 7.6.9

Observation 2082 - L2 Version 001  
Chandra X-Ray Center

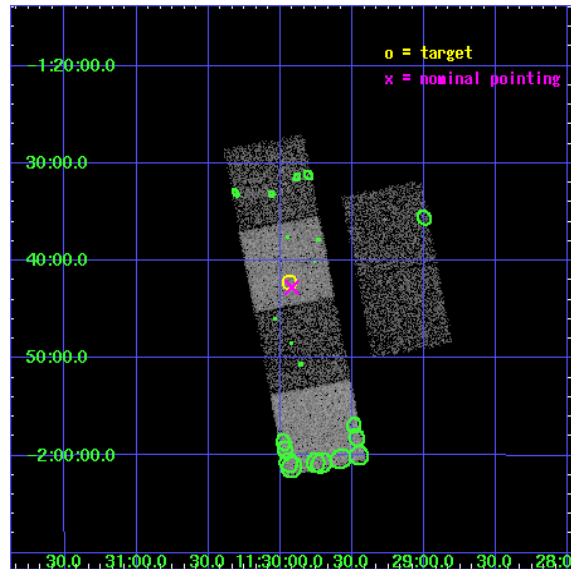
L2 Processing Date : Nov 15 2006

## Contents

<b>1</b>	<b>Front</b>	<b>2</b>
<b>2</b>	<b>OBI</b>	<b>3</b>
2.1	OBI . . . . .	3
2.1.1	Images . . . . .	3
2.1.2	Bias . . . . .	3
2.1.3	Parameters . . . . .	4
2.1.4	Events . . . . .	4
2.2	Compared Parameters . . . . .	5
2.3	Aspect . . . . .	6
2.4	Star Slots . . . . .	9
2.4.1	Slot 3 . . . . .	9
2.4.2	Slot 4 . . . . .	10
2.4.3	Slot 5 . . . . .	11
2.4.4	Slot 6 . . . . .	12
2.4.5	Slot 7 . . . . .	13
2.5	FID Slots . . . . .	14
2.5.1	Slot 0 . . . . .	14
2.5.2	Slot 1 . . . . .	15
2.5.3	Slot 2 . . . . .	16
<b>3</b>	<b>Point Sources</b>	<b>17</b>
<b>A</b>	<b>Summary</b>	<b>18</b>
A.1	Status . . . . .	18
A.2	Comments . . . . .	18

# 1 Front

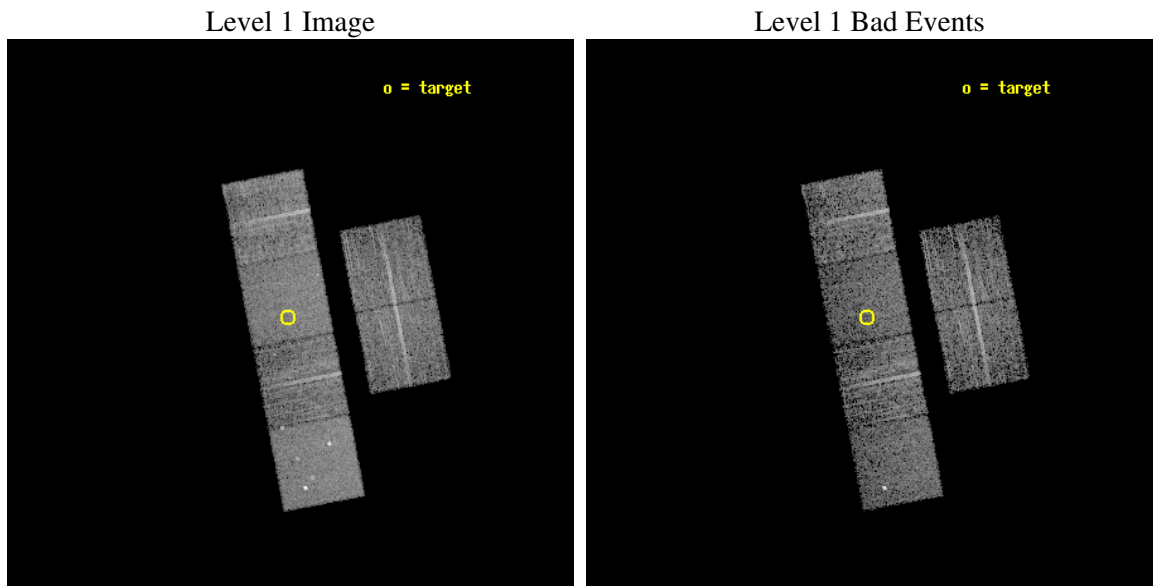
seq_num	700272
obs_id	2082
title	AN X-RAY STUDY OF THE MOST DISTANT QUASARS FROM THE SLOAN DIGITAL SKY SURVEY
observer	Prof. William Brandt
object	SDSSJ112956-014212
dtcycle	0
cycle	P
ra_targ	172.48375
dec_targ	-1.703444
ra_nom	172.48011053875
dec_nom	-1.7125566975671
roll_nom	258.98661996817
revision	2
ontime	4876.8000045419
livetime	4815.0470264279
ontime2	4876.8000045419
ontime3	4876.8000045419
ontime5	4876.8000045419
ontime6	4876.8000045419
ontime7	4876.8000045419
ontime8	4876.8000045419
l2events	49368



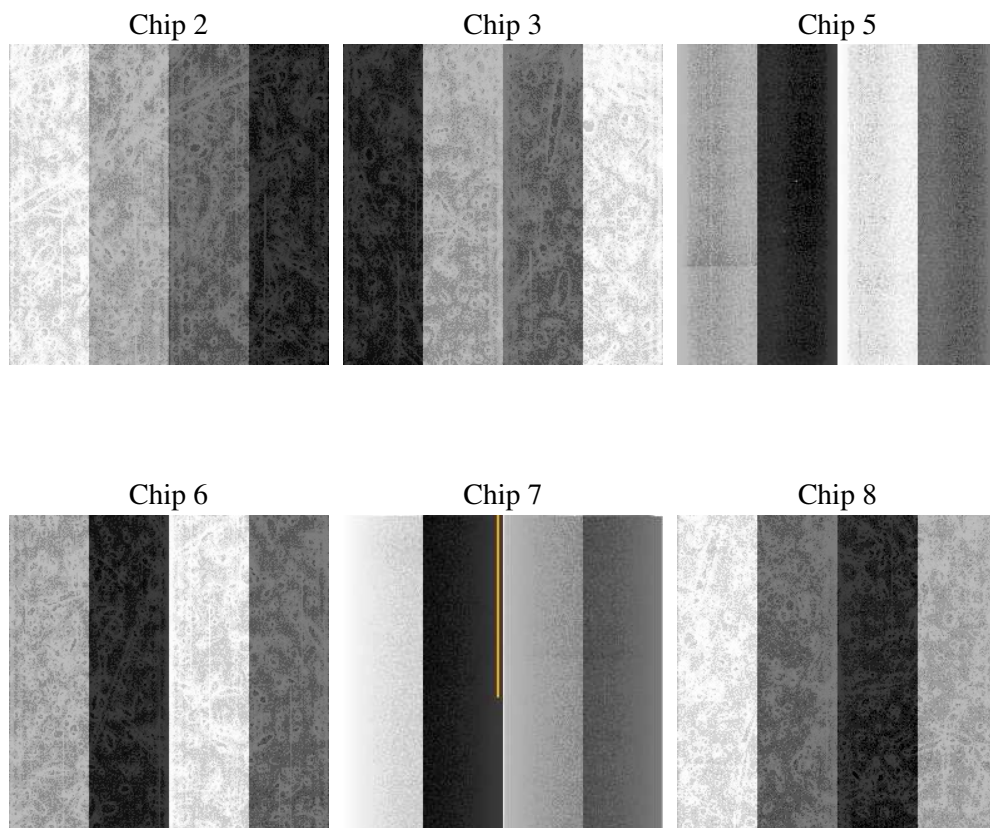
## 2 OBI

### 2.1 OBI

#### 2.1.1 Images



#### 2.1.2 Bias



### 2.1.3 Parameters

obi_num	0
ascdsver	7.6.9
caldsver	3.2.4
date	2006-11-15T23:28:32
revision	2

sched_exp_time	5000.000000
ontime	4880.945389241
ontime2	4880.945369333
ontime3	4880.945389241
ontime5	4880.945389241
ontime6	4880.945369333
ontime7	4880.945389241
ontime8	4880.945389241
l1events	237035

### 2.1.4 Events

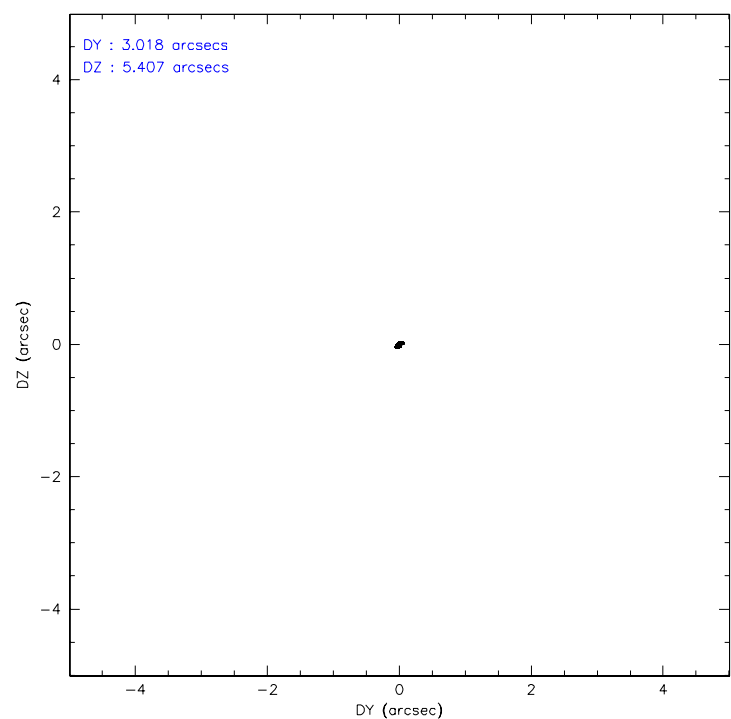
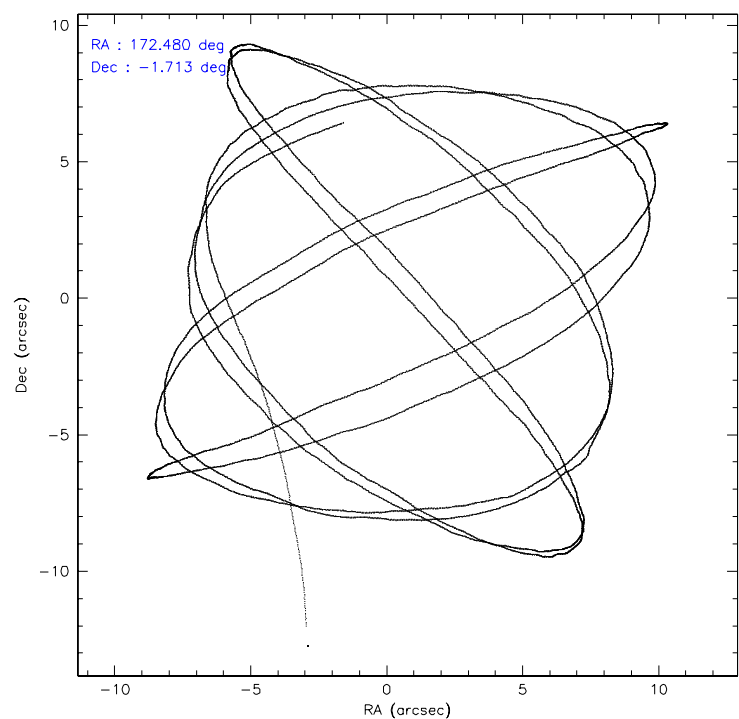
	ccd 2	ccd 3	ccd 5	ccd 6	ccd 7	ccd 8
level 1 events	34685	34131	47987	34306	41596	44330
rejected events	30601	30267	26849	29994	25517	33199
rejected %	88%	88%	55%	87%	61%	74%

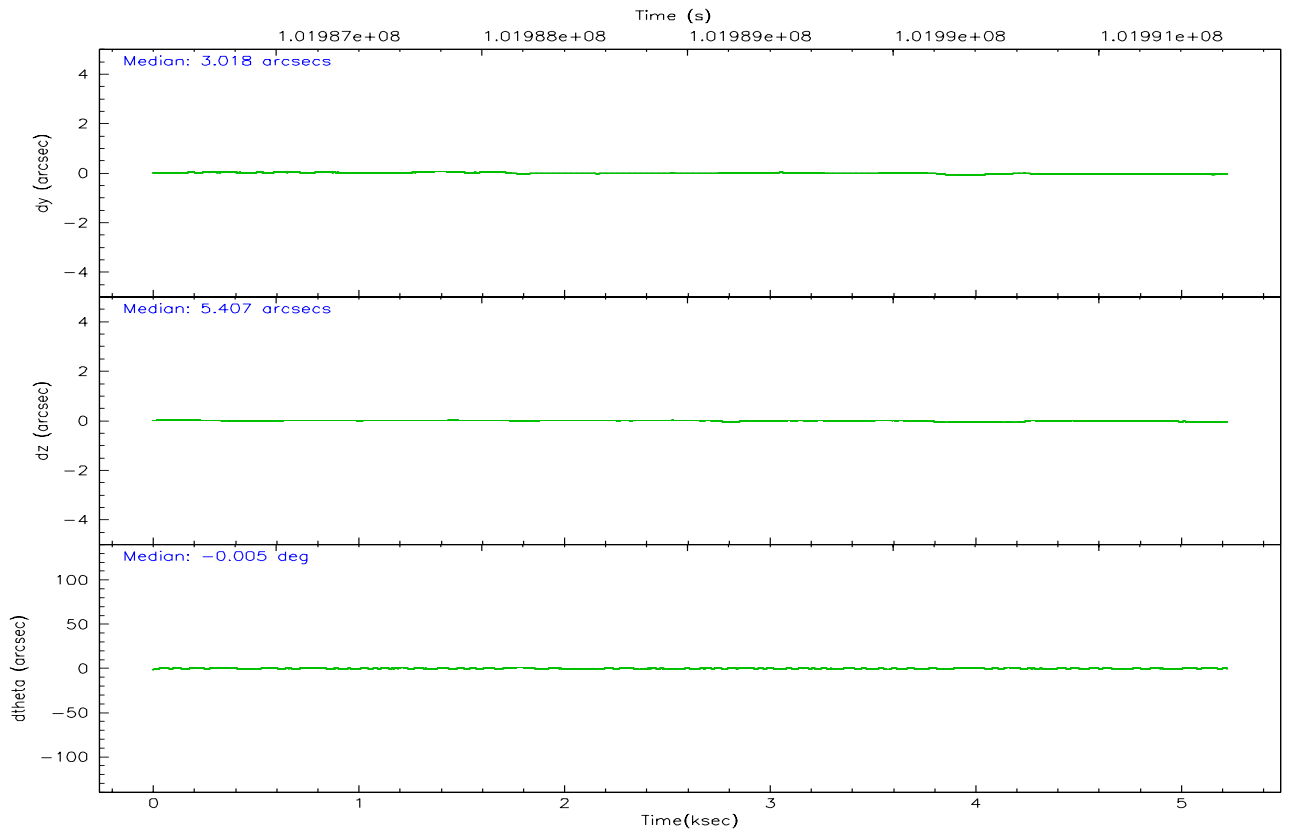
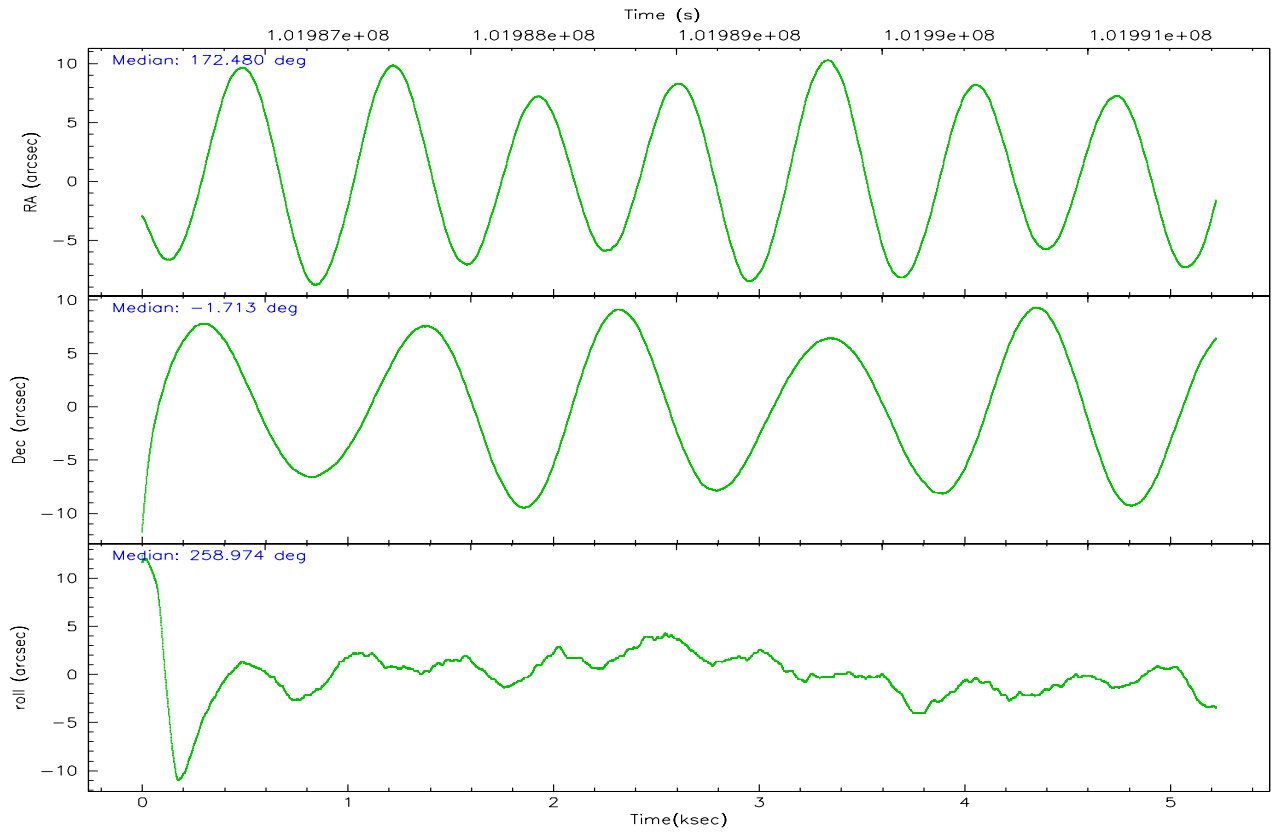
	ccd 2	ccd 3	ccd 5	ccd 6	ccd 7	ccd 8
grade 0 events	1672	1605	2438	1837	1064	3751
	4%	4%	5%	5%	2%	8%
grade 1 events	14	10	50	18	26	34
	0%	0%	0%	0%	0%	0%
grade 2 events	939	815	6487	906	3874	2089
	2%	2%	13%	2%	9%	4%
grade 3 events	325	344	497	368	899	1449
	0%	1%	1%	1%	2%	3%
grade 4 events	381	363	473	425	847	1335
	1%	1%	0%	1%	2%	3%
grade 5 events	1185	1270	2325	1330	2782	1729
	3%	3%	4%	3%	6%	3%
grade 6 events	775	741	11273	785	9413	2513
	2%	2%	23%	2%	22%	5%
grade 7 events	29394	28983	24444	28637	22691	31430
	84%	84%	50%	83%	54%	70%

## 2.2 Compared Parameters

Parameter	Planned	Actual	Parameter	Planned	Actual
Instrument	ACIS	ACIS	Obspar format version number	6	6
Detector	ACIS-235678	ACIS-235678	Obspar file type	PREDICTED	ACTUAL
Grating	NONE	NONE	Obspar update status	NONE	UPDATED
Data mode	FAINT	FAINT	Number of optional ACIS chips dropped	0	0
Observation mode	POINTING	POINTING	On-chip summing requested	N	N
Pointing RA	172.471055	172.4801105387479	Subarray requested	NONE	NONE
Pointing Dec	-1.686834	-1.712556697567141	Alternating exposures requested	N	N
Pointing Roll	258.829705	258.9866199681712	Primary exposure time	0.000000	3.2
SIM focus pos (mm)	-0.684267	-0.6828225247311905			
SIM defocus (mm)	0	0.001444936568705701			
SIM translation stage pos (mm)	-190.132523	-190.1425803651734			
SIM translation stage offset (mm)	0	0.01005778216563158			
Observation start time	101986624.184000	101985628.31973			
Observation start date	2001-03-26T09:36:00	2001-03-26T09:20:28			
Observation end time	101991624.184000	101992367.18249			
Observation end date	2001-03-26T10:59:20	2001-03-26T11:12:47			
Read mode	TIMED	TIMED			

## 2.3 Aspect





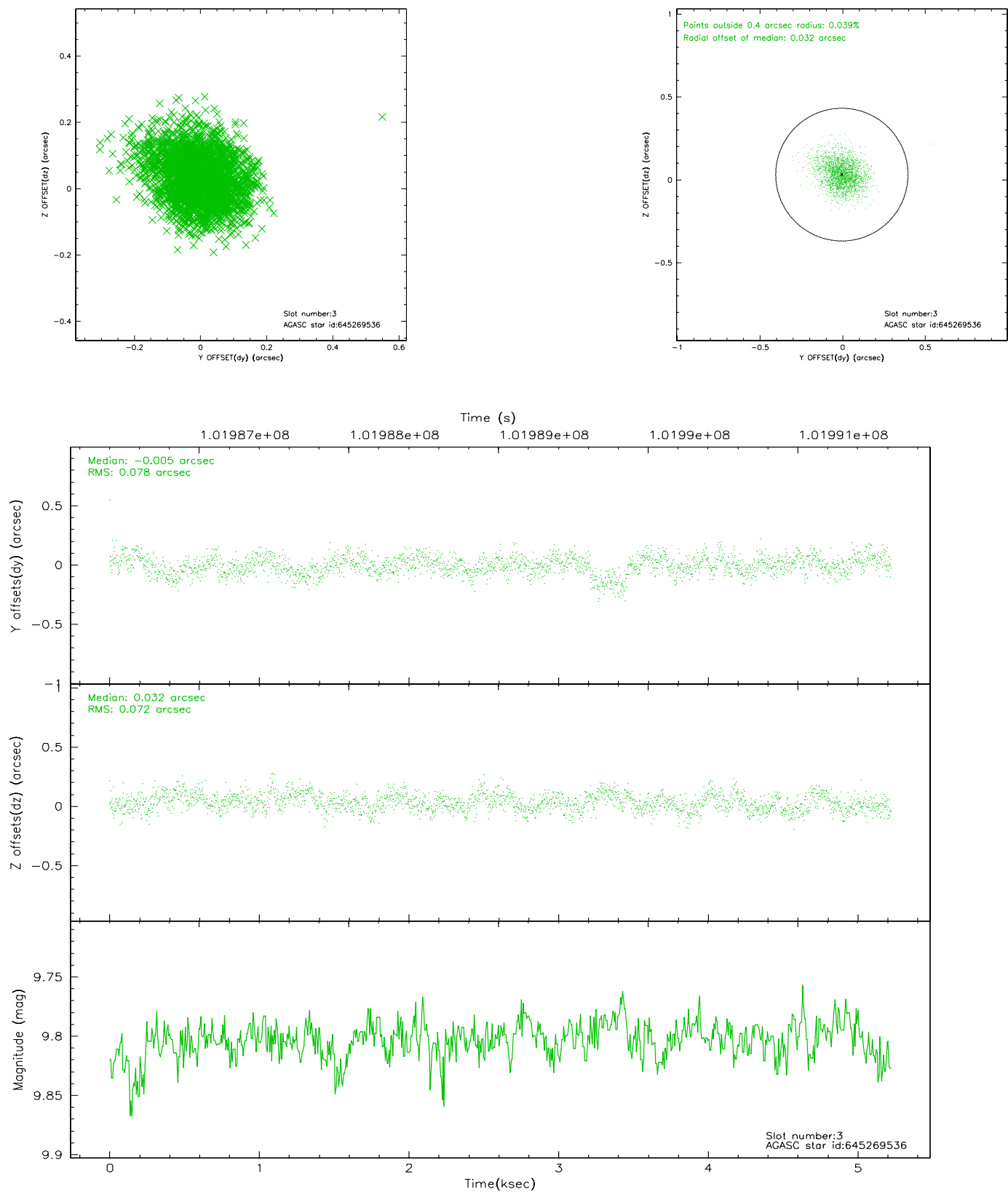
### Slot Statistics

slot	status	id	mag	n_pts	med_dy	med_dz	dr1	dr2	ra	dec	mean_y	mean_z
0	FID	ACIS-S-2	7.11	1275	-0.014	0.028	0.007	0.011	0.000000	0.000000	-755.63	-1726.47
1	FID	ACIS-S-4	7.20	1275	-0.076	-0.000	0.006	0.010	0.000000	0.000000	2157.02	180.86
2	FID	ACIS-S-5	7.24	1275	0.059	-0.019	0.006	0.010	0.000000	0.000000	-1806.95	175.74
3	GUIDE	645269536	9.80	2544	-0.005	0.032	0.112	0.182	172.133318	-2.052583	1527.38	-935.75
4	GUIDE	645269504	9.65	2547	-0.004	0.108	0.094	0.152	172.248737	-1.852553	740.97	-668.40
5	GUIDE	645268592	9.77	2548	0.112	-0.146	0.116	0.223	172.459455	-2.042920	1266.00	208.15
6	GUIDE	645269616	9.42	2548	-0.095	0.094	0.079	0.129	171.997004	-1.921440	1159.91	-1508.33
7	GUIDE	646185808	9.87	2543	0.001	-0.082	0.136	0.214	173.185662	-1.446512	-1346.71	2355.44

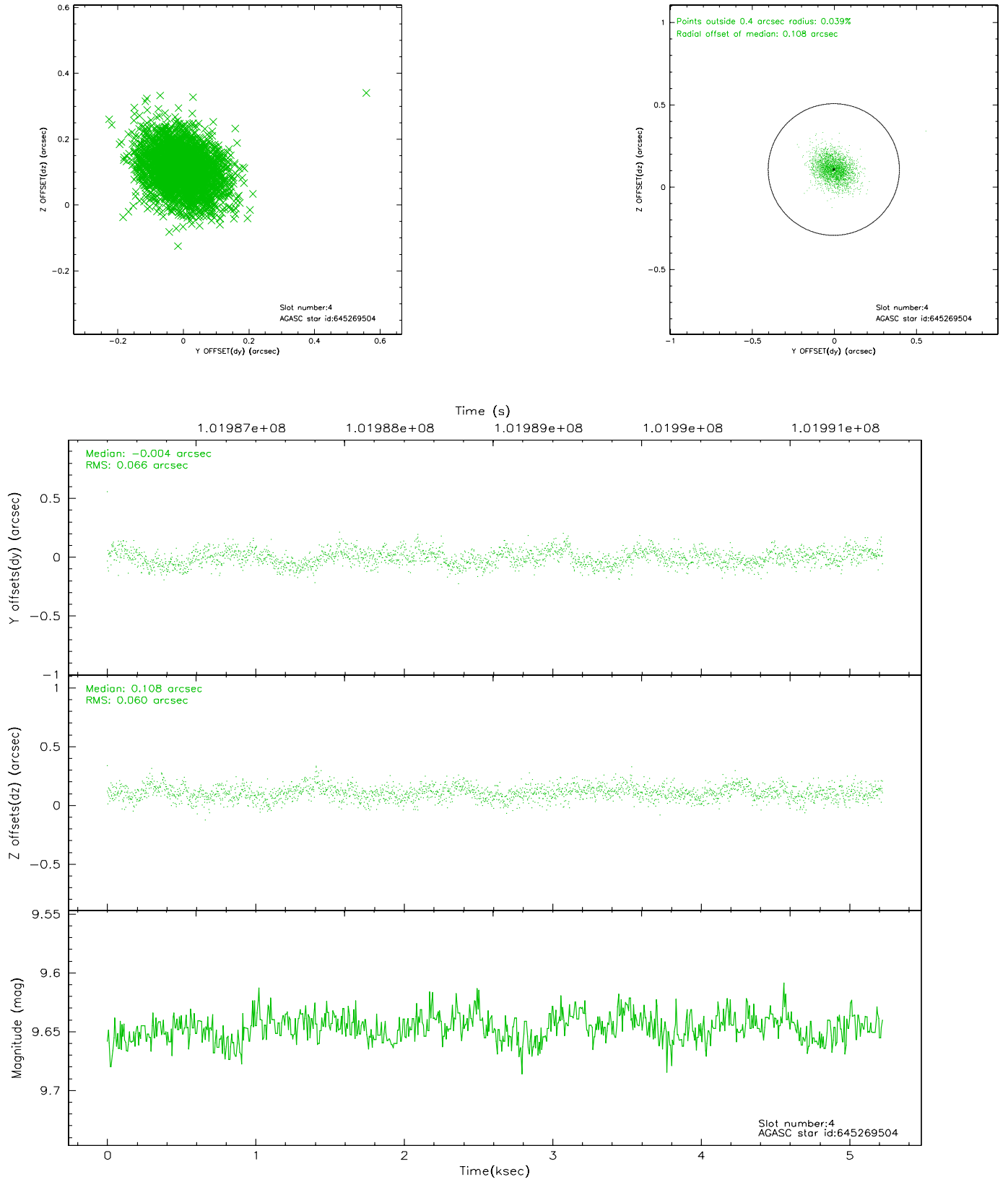


## 2.4 Star Slots

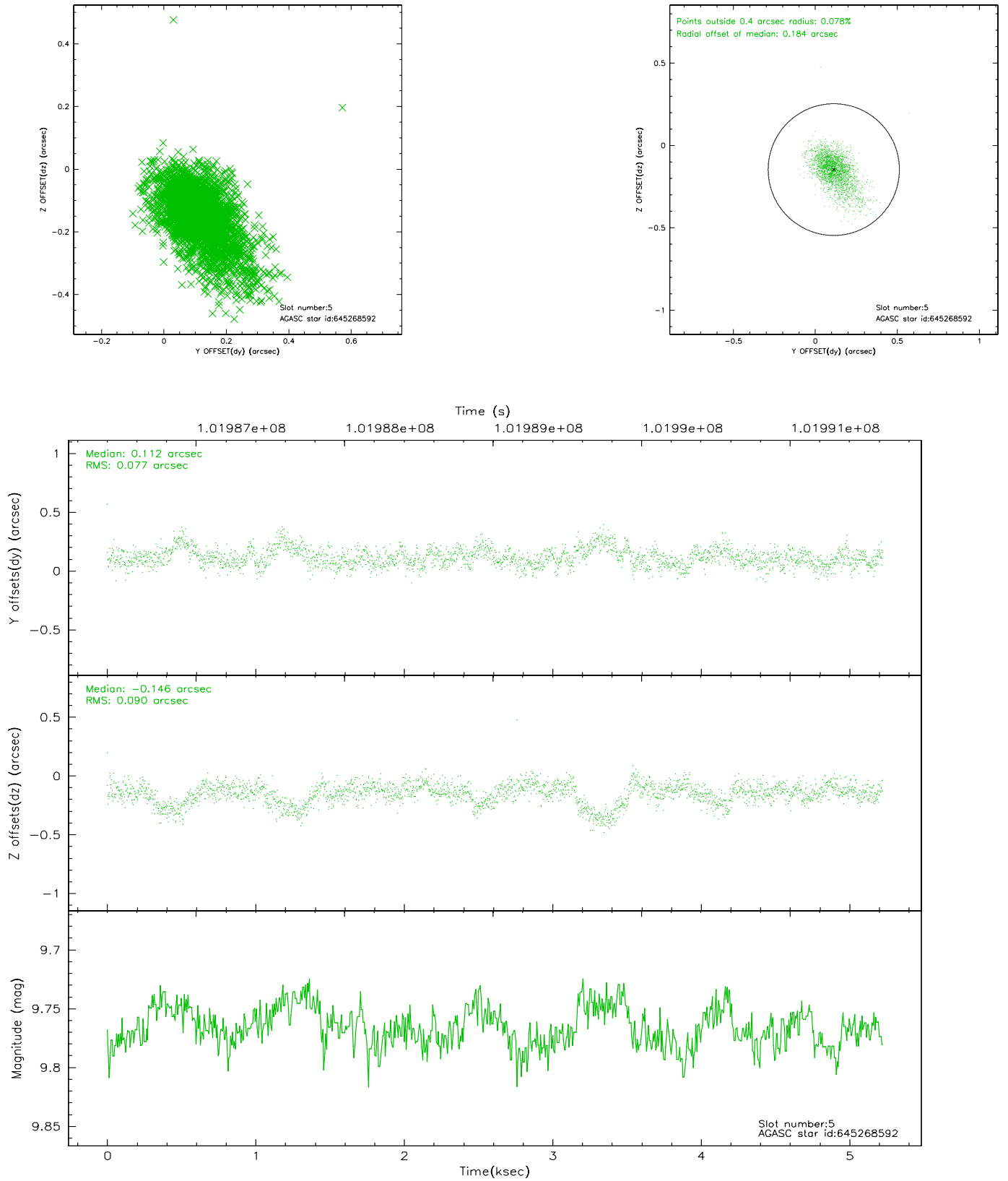
### 2.4.1 Slot 3



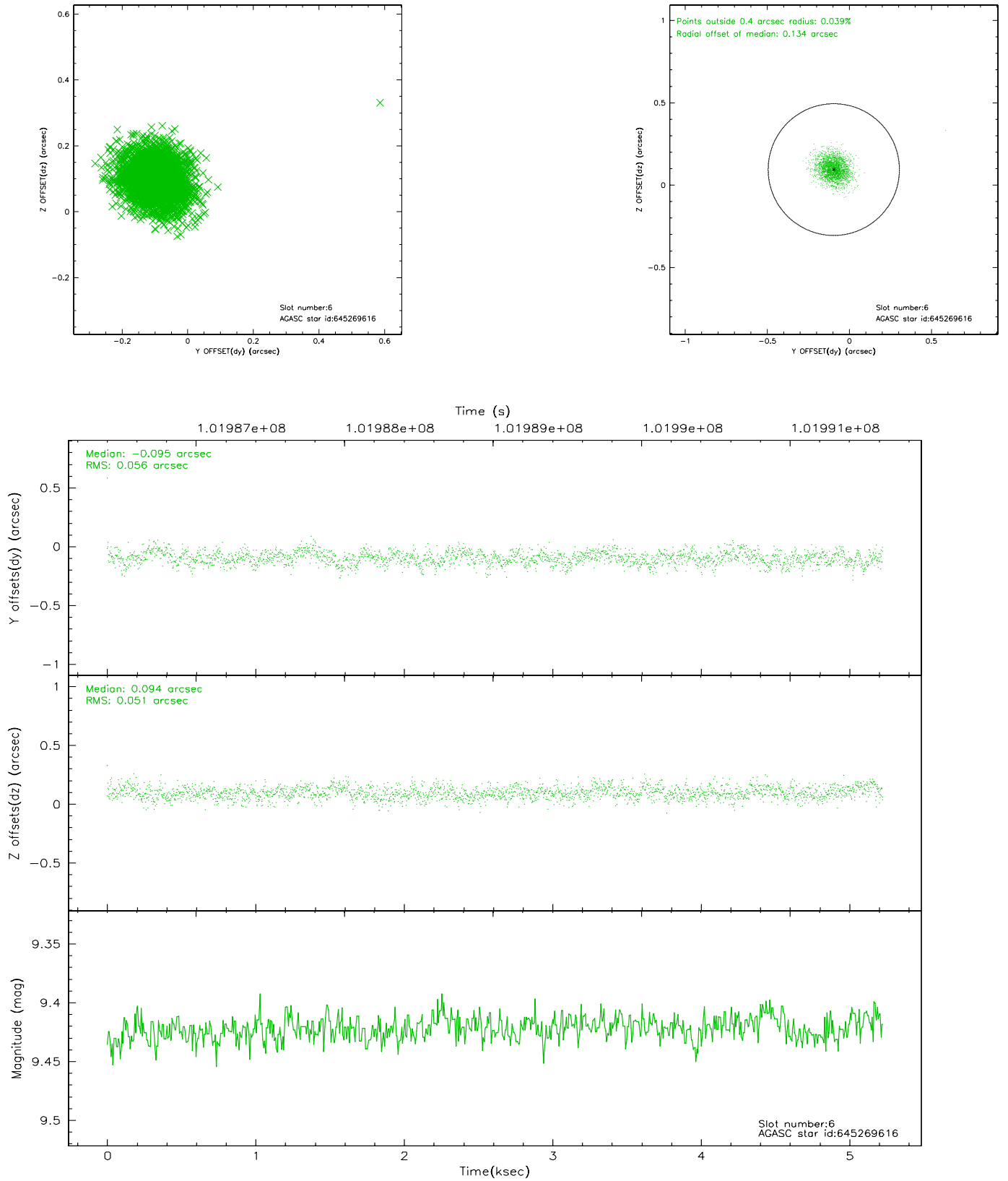
## 2.4.2 Slot 4



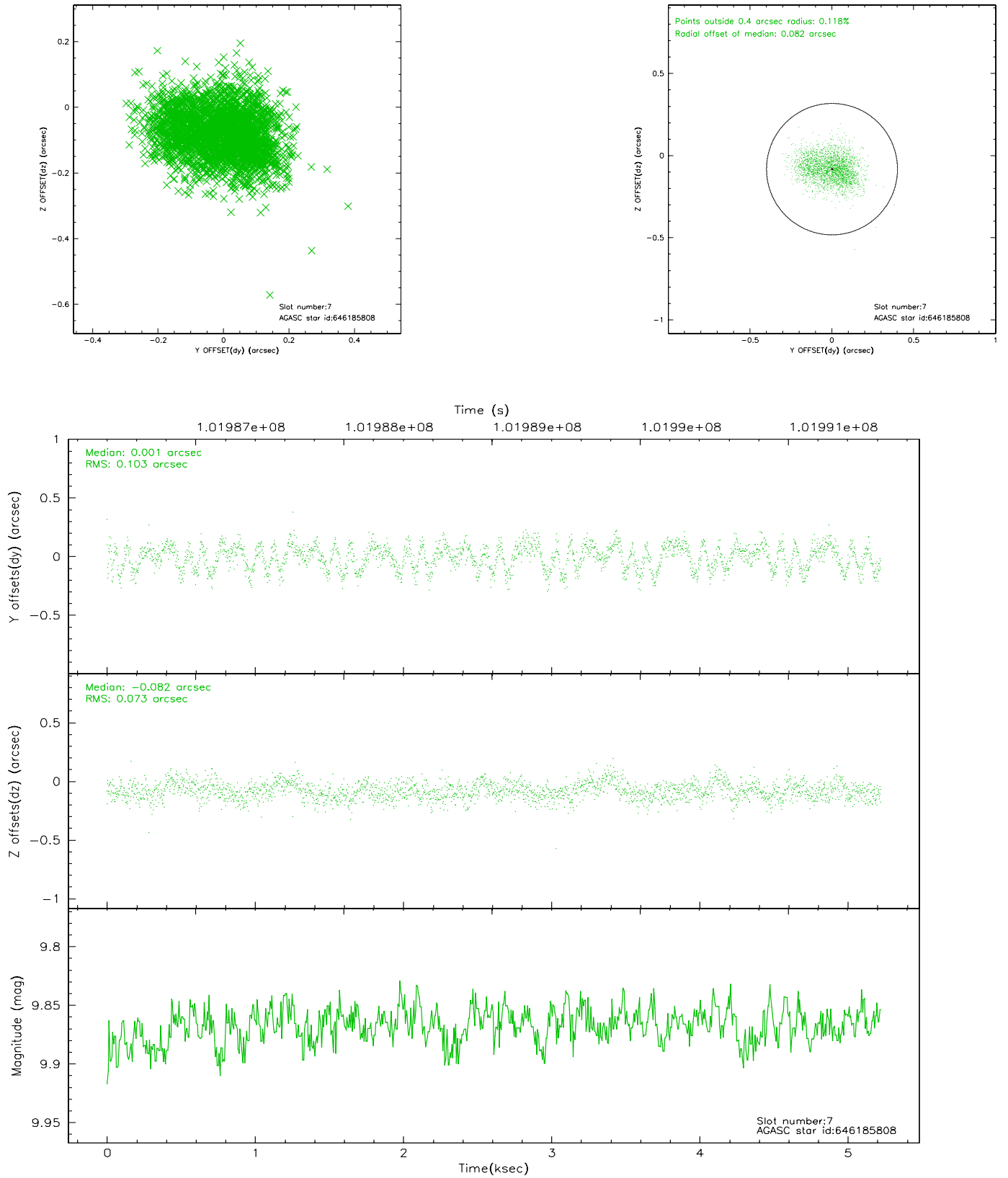
### 2.4.3 Slot 5



## 2.4.4 Slot 6

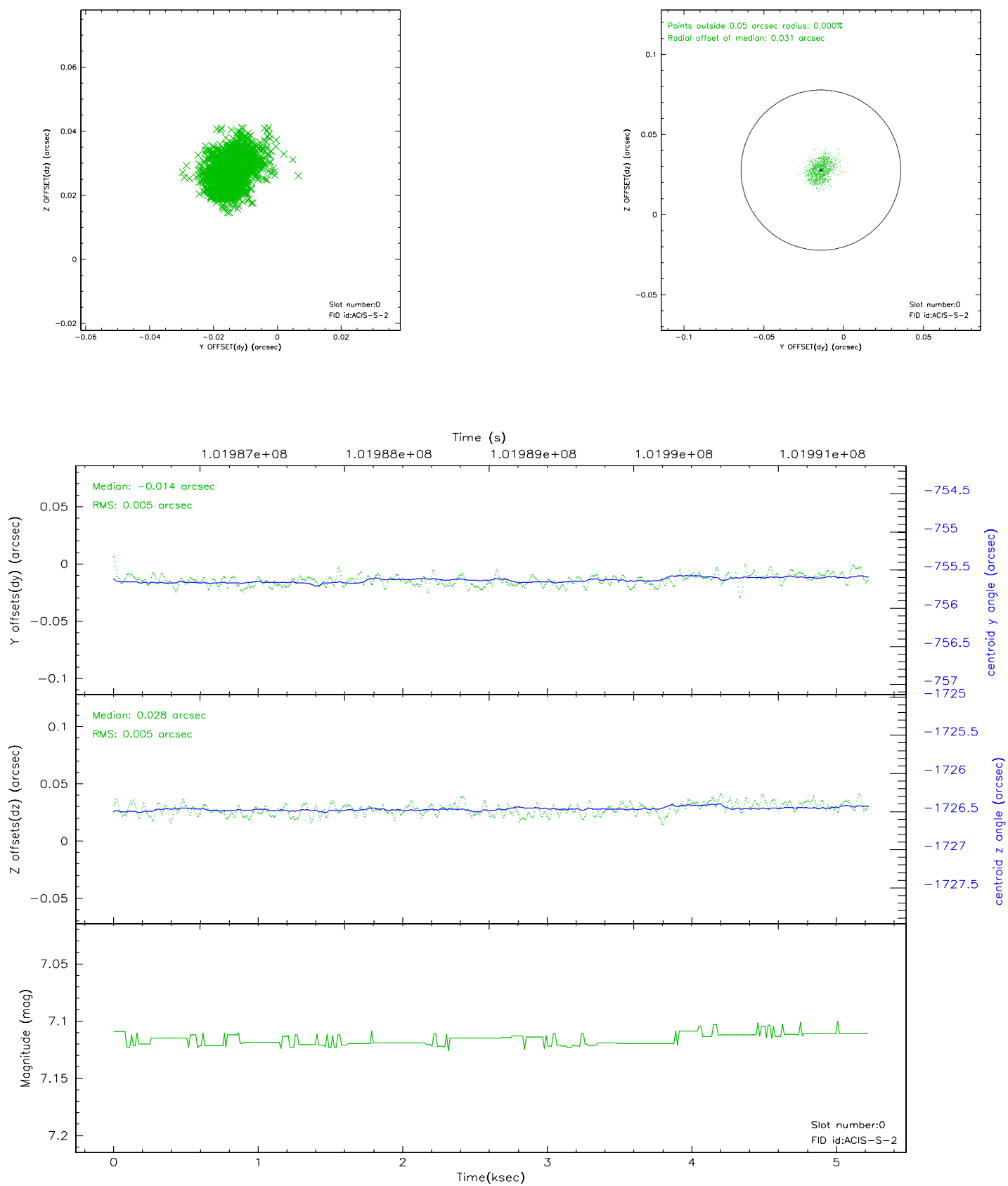


## 2.4.5 Slot 7

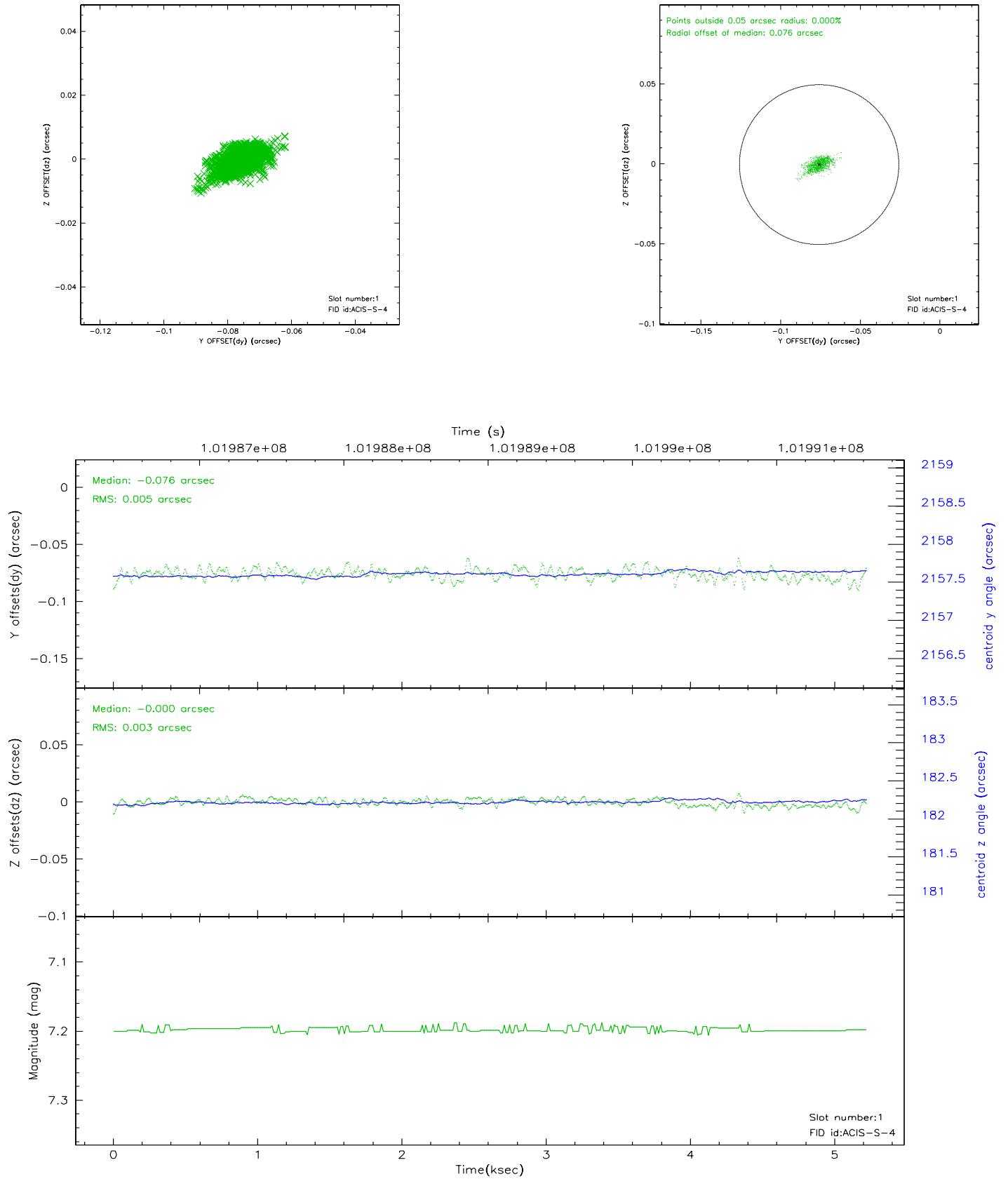


## 2.5 FID Slots

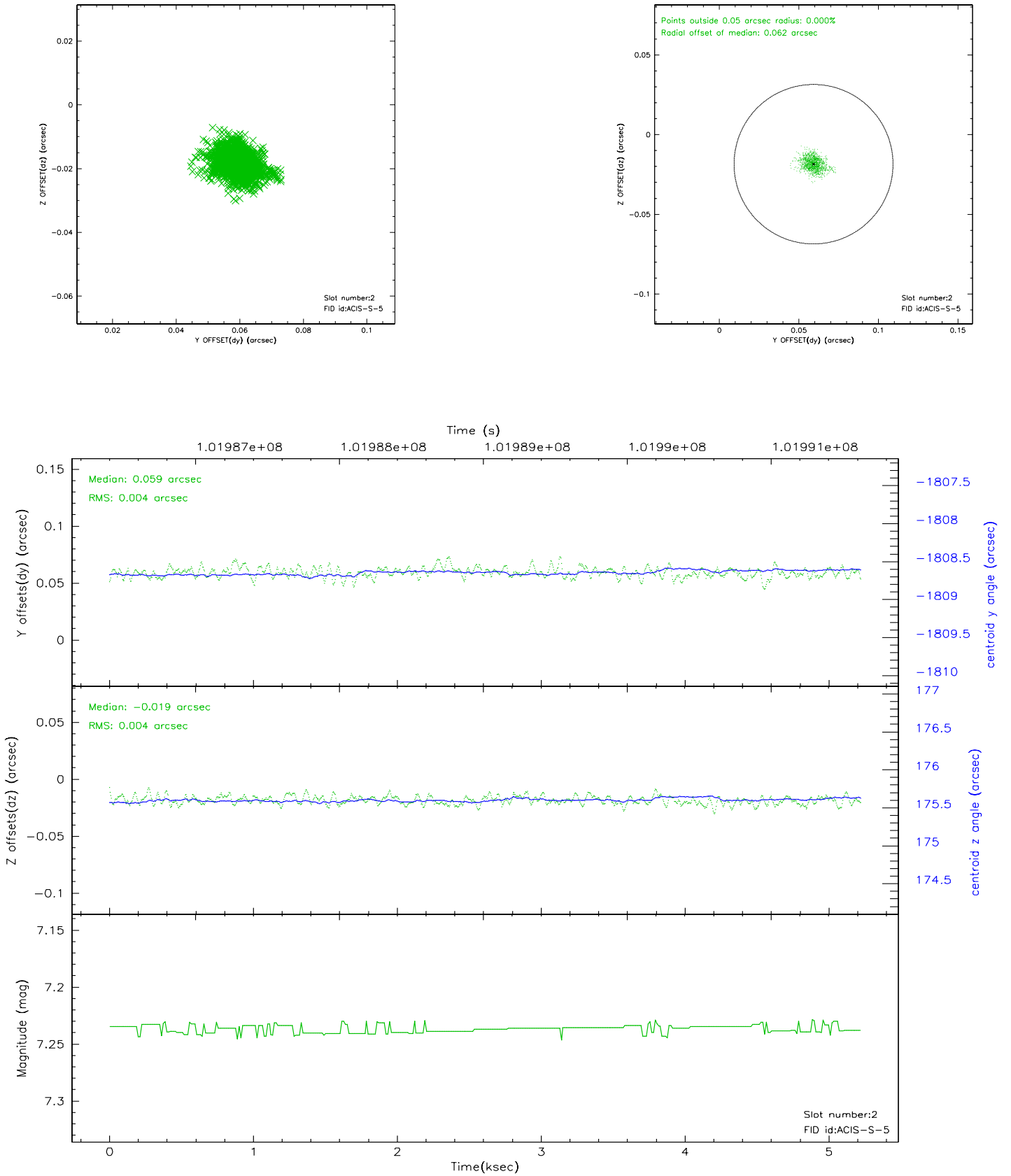
### 2.5.1 Slot 0



## 2.5.2 Slot 1

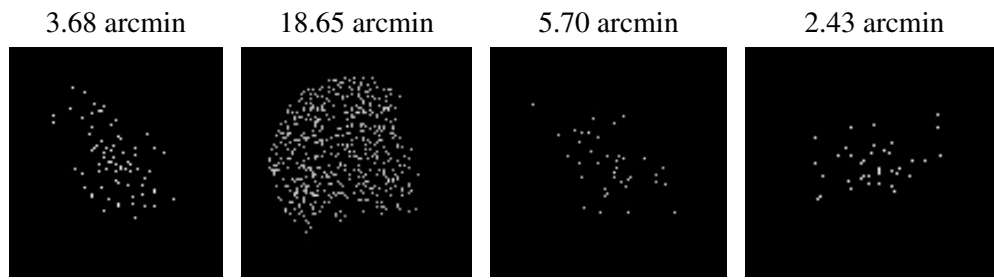


### 2.5.3 Slot 2





### 3 Point Sources



## A Summary

### A.1 Status

V&V Scientist	Beth Sundheim
V&V Date (YYYY-MM-DD)	2006.11.16
V&V Edition	1
V&V Disposition and Status	OK
V&V Charge Time	4.9

### A.2 Comments