

V&V Reference Report

L2 ASCDS Version : 7.6.10

Observation 1632 - L2 Version 001
Chandra X-Ray Center

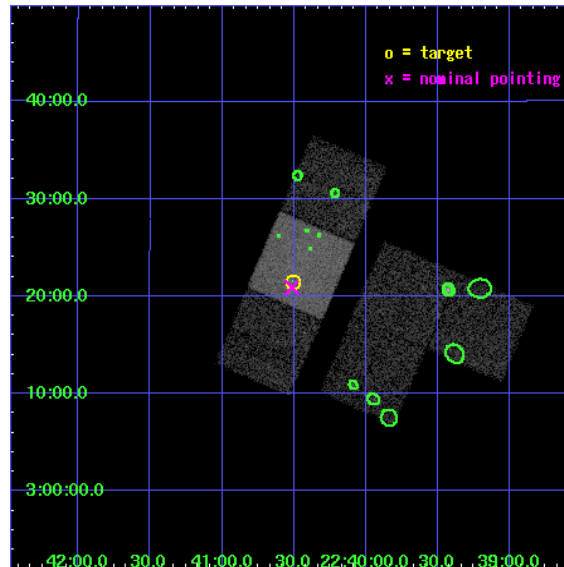
L2 Processing Date : Jan 21 2007

Contents

1	Front	2
2	OBI	3
2.1	OBI	3
2.1.1	Images	3
2.1.2	Bias	3
2.1.3	Parameters	4
2.1.4	Events	4
2.2	Compared Parameters	5
2.3	Aspect	6
2.4	Star Slots	9
2.4.1	Slot 3	9
2.4.2	Slot 4	10
2.4.3	Slot 5	11
2.4.4	Slot 6	12
2.4.5	Slot 7	13
2.5	FID Slots	14
2.5.1	Slot 0	14
2.5.2	Slot 1	15
2.5.3	Slot 2	16
3	Point Sources	17
A	Summary	18
A.1	Status	18
A.2	Comments	18

1 Front

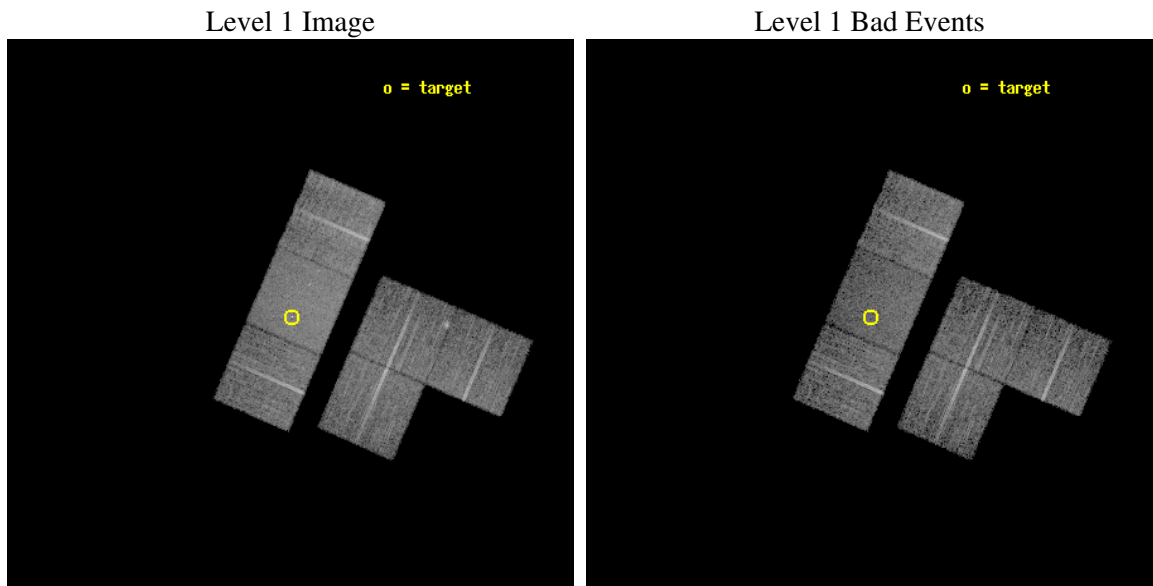
seq_num	700248
obs_id	1632
title	FOLLOW - UP ON CHANDRA SURVEY OF GRAVITATIONAL LENSES FOR TIME-DELAY MEASUREMENTS
observer	Professor Gordon Garmire
object	2237+0305
dtcycle	0
cycle	P
ra_targ	340.126417
dec_targ	3.358
ra_nom	340.12861316146
dec_nom	3.3485433622643
roll_nom	293.30253620475
revision	2
ontime	9657.6000089943
livetime	9535.3096625719
ontime1	9654.3590686619
ontime2	9654.359048754
ontime3	9657.6000089943
ontime6	9657.6000089943
ontime7	9657.6000089943
ontime8	9654.359048754
l2events	64879



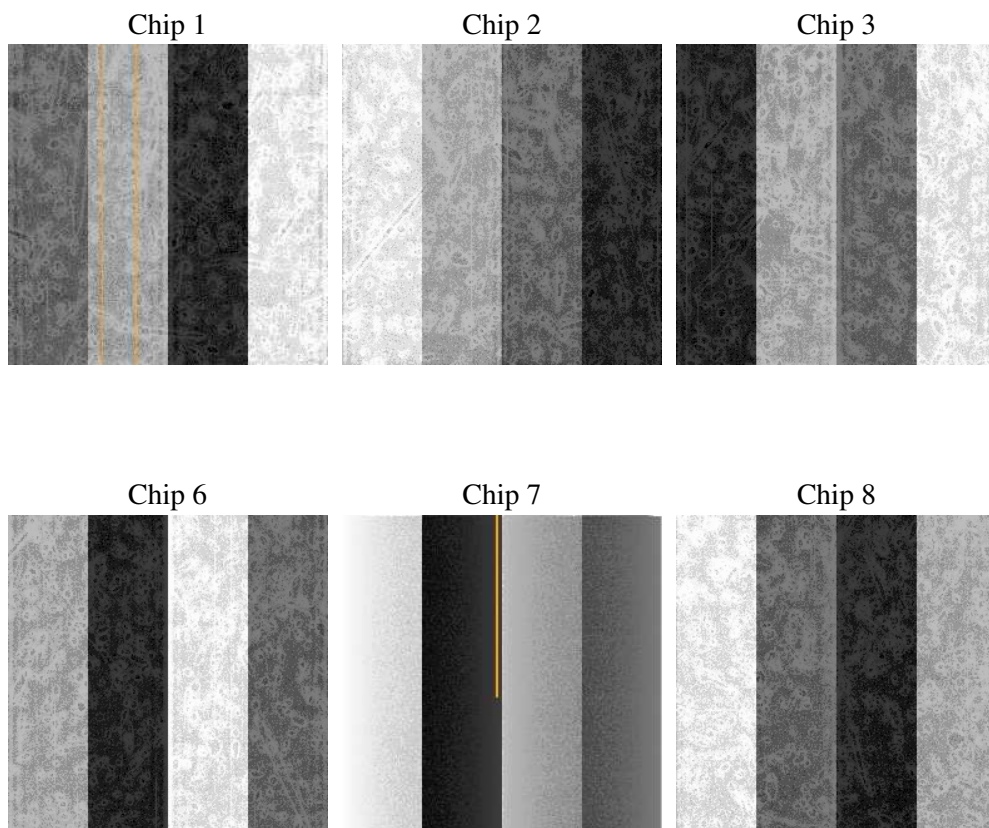
2 OBI

2.1 OBI

2.1.1 Images



2.1.2 Bias



2.1.3 Parameters

obi_num	4
ascdsver	7.6.10
caldsver	3.3.0
date	2007-01-20T08:36:53
revision	2

sched_exp_time	9700.000000
ontime	9657.6000089943
ontime1	9654.3590686619
ontime2	9654.359048754
ontime3	9657.6000089943
ontime6	9657.6000089943
ontime7	9657.6000089943
ontime8	9654.359048754
l1events	393295

2.1.4 Events

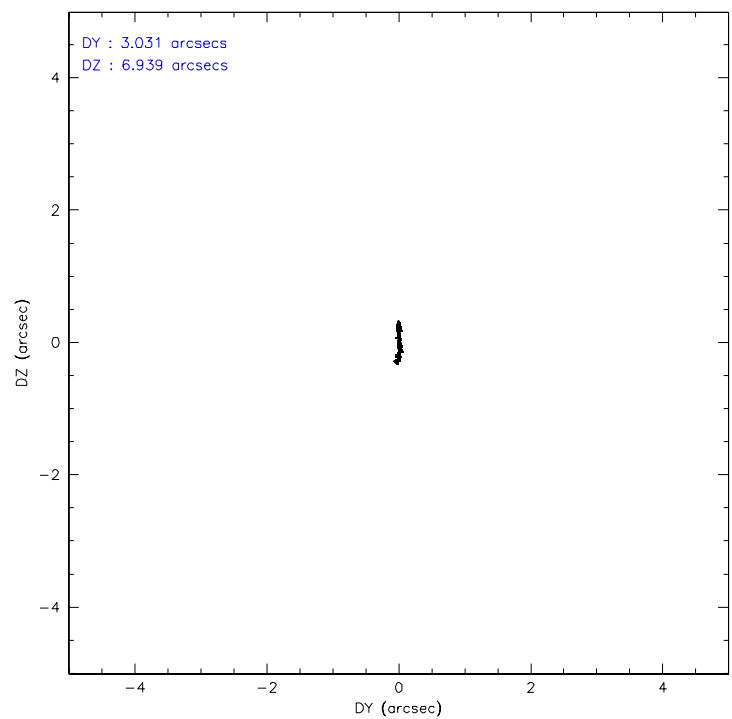
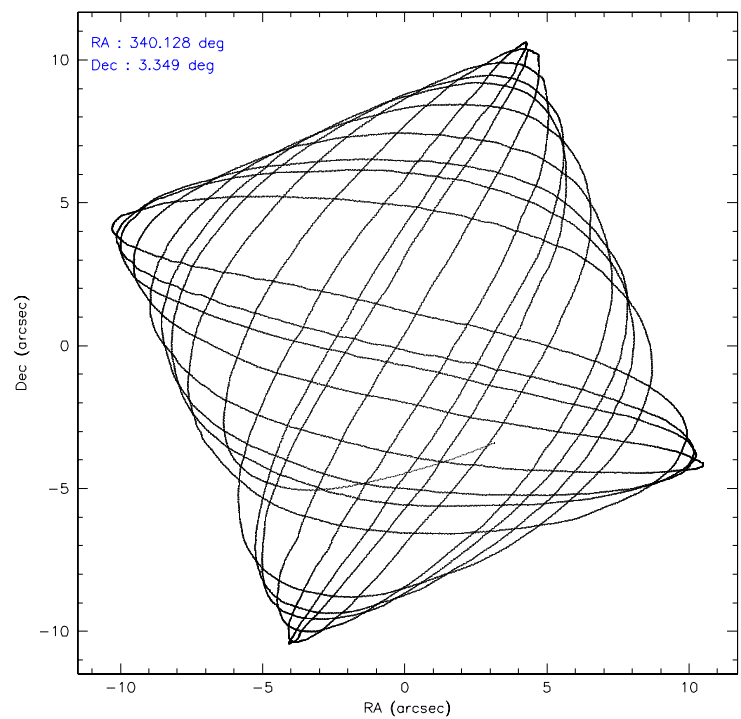
	ccd 1	ccd 2	ccd 3	ccd 6	ccd 7	ccd 8
level 1 events	57223	58863	58444	61064	79466	78235
rejected events	49874	52108	50984	54040	45447	62288
rejected %	87%	88%	87%	88%	57%	79%

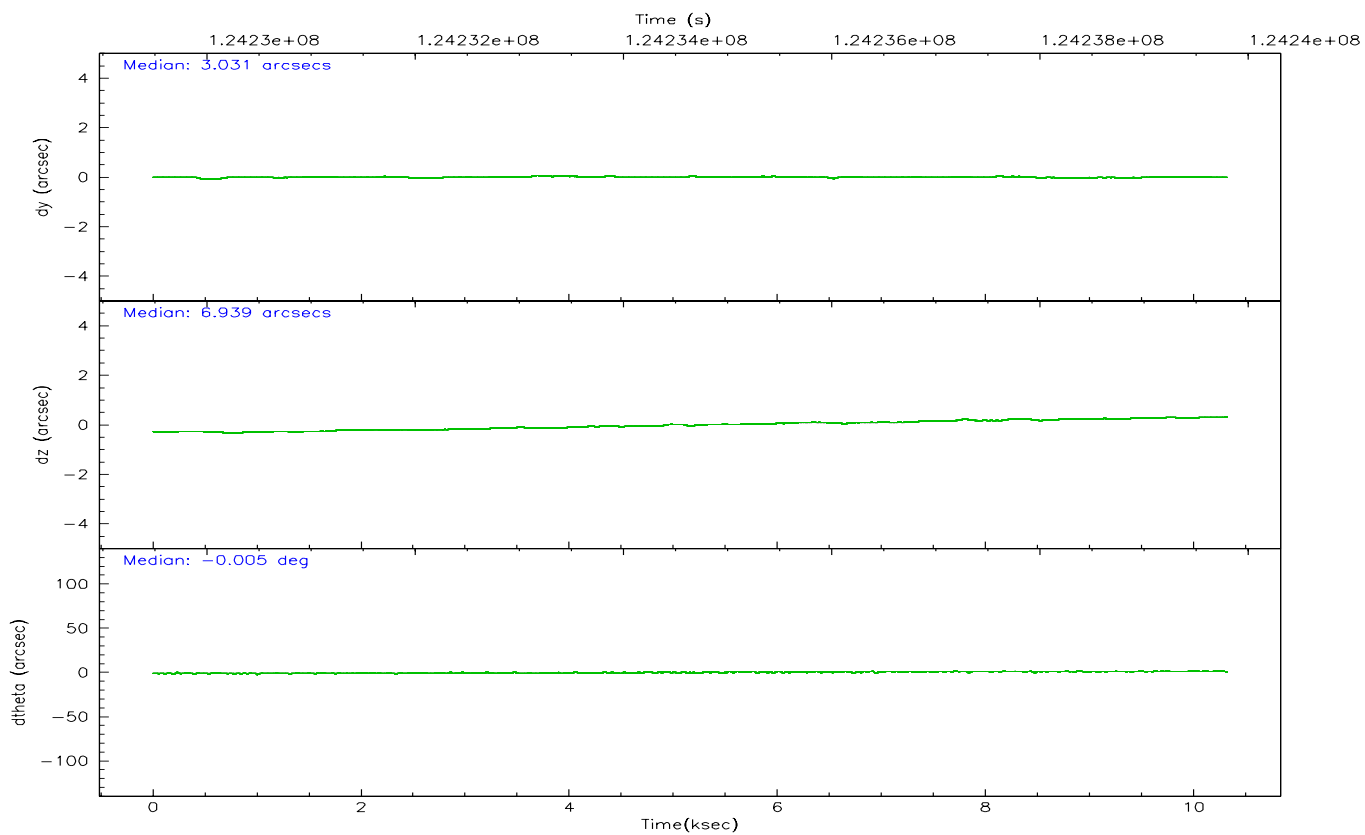
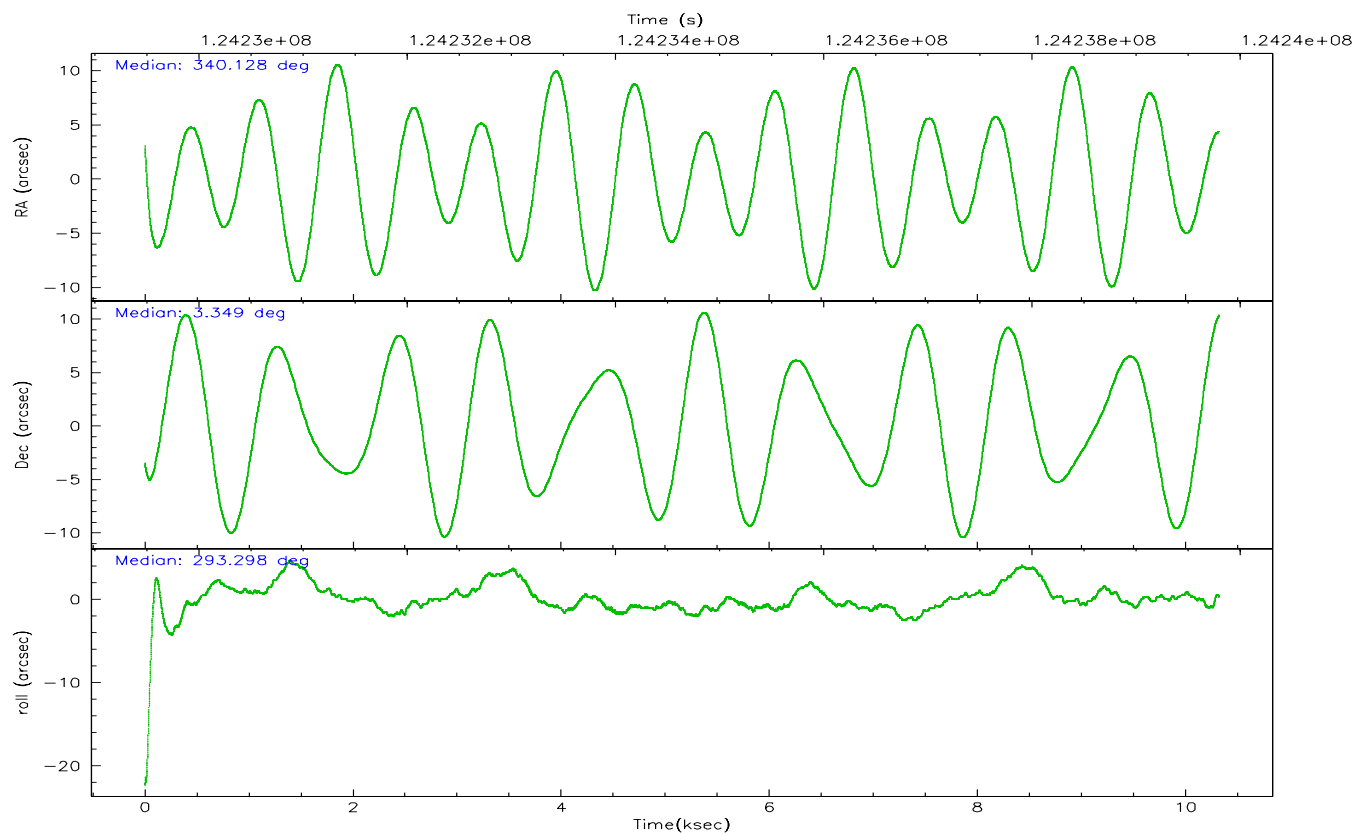
	ccd 1	ccd 2	ccd 3	ccd 6	ccd 7	ccd 8
grade 0 events	2908	2829	3483	2874	3409	4878
	5%	4%	5%	4%	4%	6%
grade 1 events	30	20	30	31	59	40
	0%	0%	0%	0%	0%	0%
grade 2 events	1517	1400	1425	1421	6848	3590
	2%	2%	2%	2%	8%	4%
grade 3 events	777	654	638	708	3025	1659
	1%	1%	1%	1%	3%	2%
grade 4 events	750	689	644	645	3012	1428
	1%	1%	1%	1%	3%	1%
grade 5 events	2478	2046	2425	2615	7560	3358
	4%	3%	4%	4%	9%	4%
grade 6 events	1402	1191	1275	1380	17752	4405
	2%	2%	2%	2%	22%	5%
grade 7 events	47361	50034	48524	51390	37801	58877
	82%	85%	83%	84%	47%	75%

2.2 Compared Parameters

Parameter	Planned	Actual	Parameter	Planned	Actual
Instrument	ACIS	ACIS	Obspar format version number	6	6
Detector	ACIS-123678	ACIS-123678	Obspar file type	PREDICTED	ACTUAL
Grating	NONE	NONE	Obspar update status	NONE	UPDATED
Data mode	FAINT	FAINT	Number of optional ACIS chips dropped	0	0
Observation mode	POINTING	POINTING	On-chip summing requested	N	N
Pointing RA	340.106543	340.128613161461	Subarray requested	NONE	NONE
Pointing Dec	3.364557	3.348543362264317	Alternating exposures requested	N	N
Pointing Roll	293.147236	293.3025362047523	Primary exposure time	0.000000	3.2
SIM focus pos (mm)	-0.684267	-0.6828225247311905			
SIM defocus (mm)	0	0.001444936568705701			
SIM translation stage pos (mm)	-190.132523	-190.1425803651734			
SIM translation stage offset (mm)	0	0.01005778216563158			
Observation start time	124230104.184000	124228921.51912			
Observation start date	2001-12-08T20:20:40	2001-12-08T20:02:01			
Observation end time	124239804.184000	124240677.75709			
Observation end date	2001-12-08T23:02:20	2001-12-08T23:17:57			
Read mode	TIMED	TIMED			

2.3 Aspect



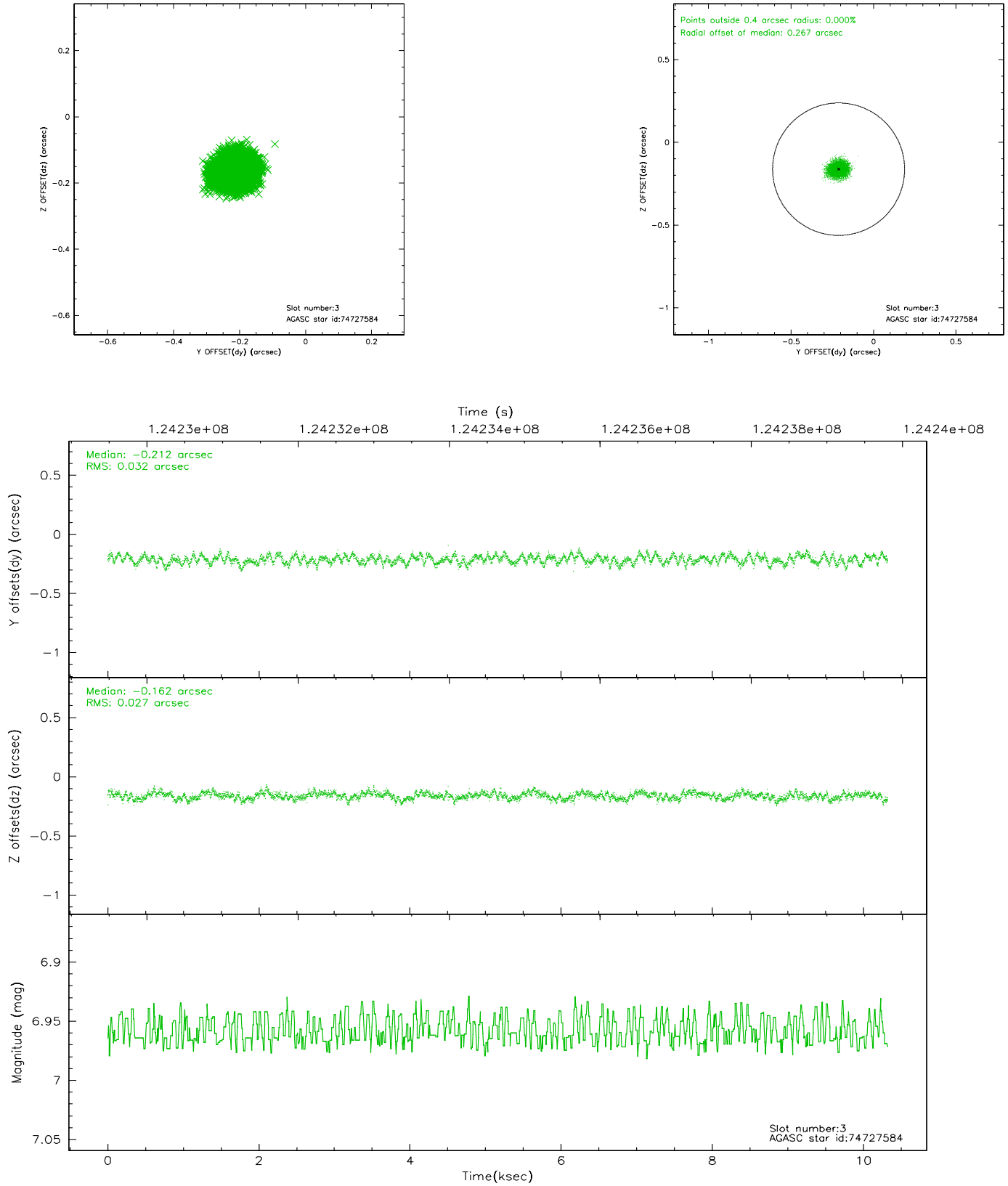


Slot Statistics

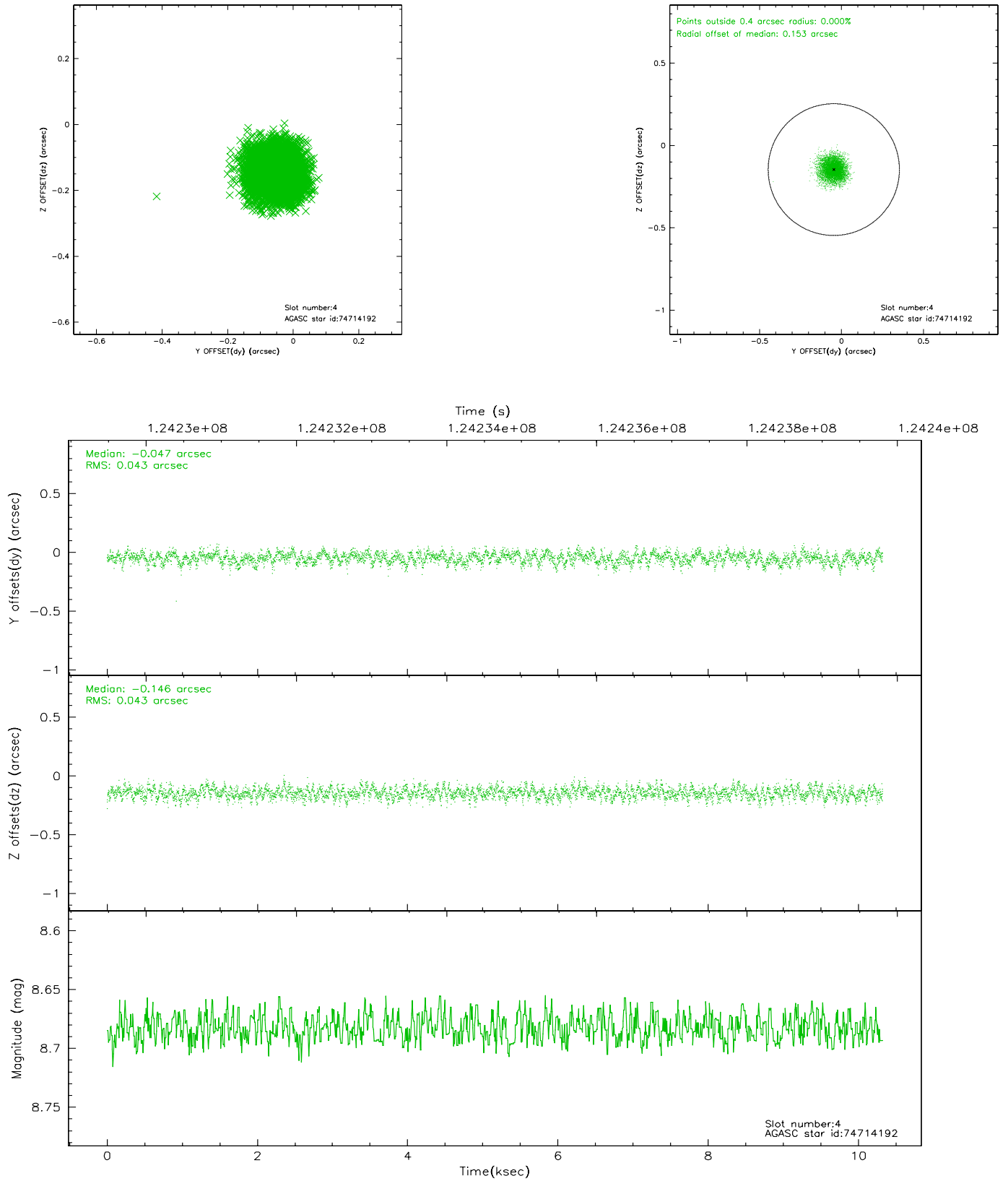
slot	status	id	mag	n_pts	med_dy	med_dz	dr1	dr2	ra	dec	mean_y	mean_z
0	FID	ACIS-S-2	7.11	2518	-0.001	0.034	0.008	0.012	0.000000	0.000000	-755.66	-1728.01
1	FID	ACIS-S-4	7.20	2516	-0.070	-0.009	0.006	0.011	0.000000	0.000000	2157.30	179.93
2	FID	ACIS-S-5	7.24	2517	0.039	-0.016	0.007	0.011	0.000000	0.000000	-1807.82	174.14
3	GUIDE	74727584	6.96	5035	-0.212	-0.162	0.046	0.071	339.633744	3.463732	-995.58	-1421.56
4	GUIDE	74714192	8.68	5035	-0.047	-0.146	0.065	0.103	339.623837	3.342441	-608.19	-1626.36
5	GUIDE	74842752	9.47	5033	0.109	0.151	0.091	0.145	340.751816	3.211667	1418.03	1916.93
6	GUIDE	74853960	9.39	5034	-0.092	0.046	0.092	0.145	340.530042	3.956053	-1359.32	2236.46
7	GUIDE	74848432	9.36	5032	0.243	0.112	0.089	0.143	340.632832	2.902265	2274.60	1087.04

2.4 Star Slots

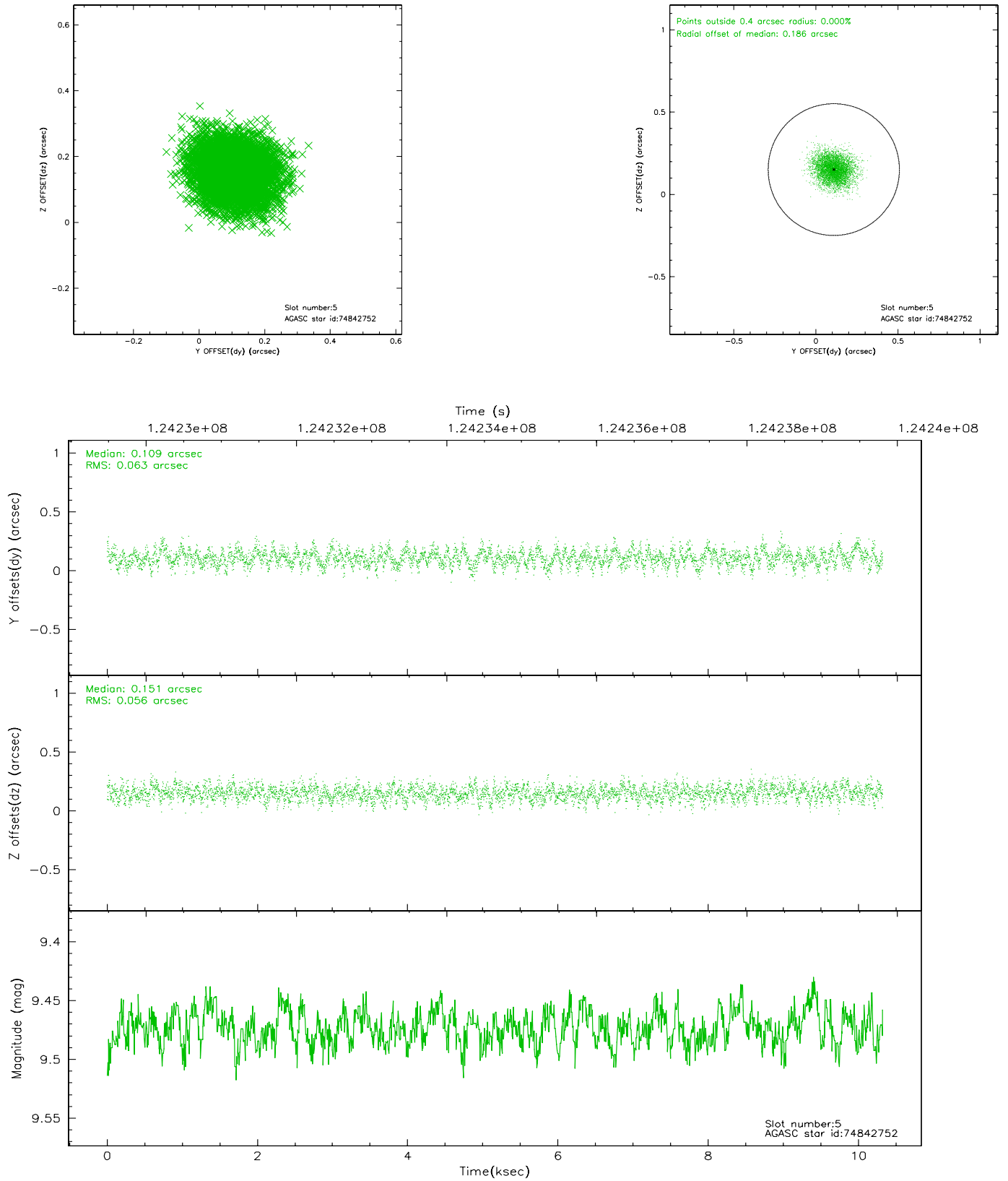
2.4.1 Slot 3



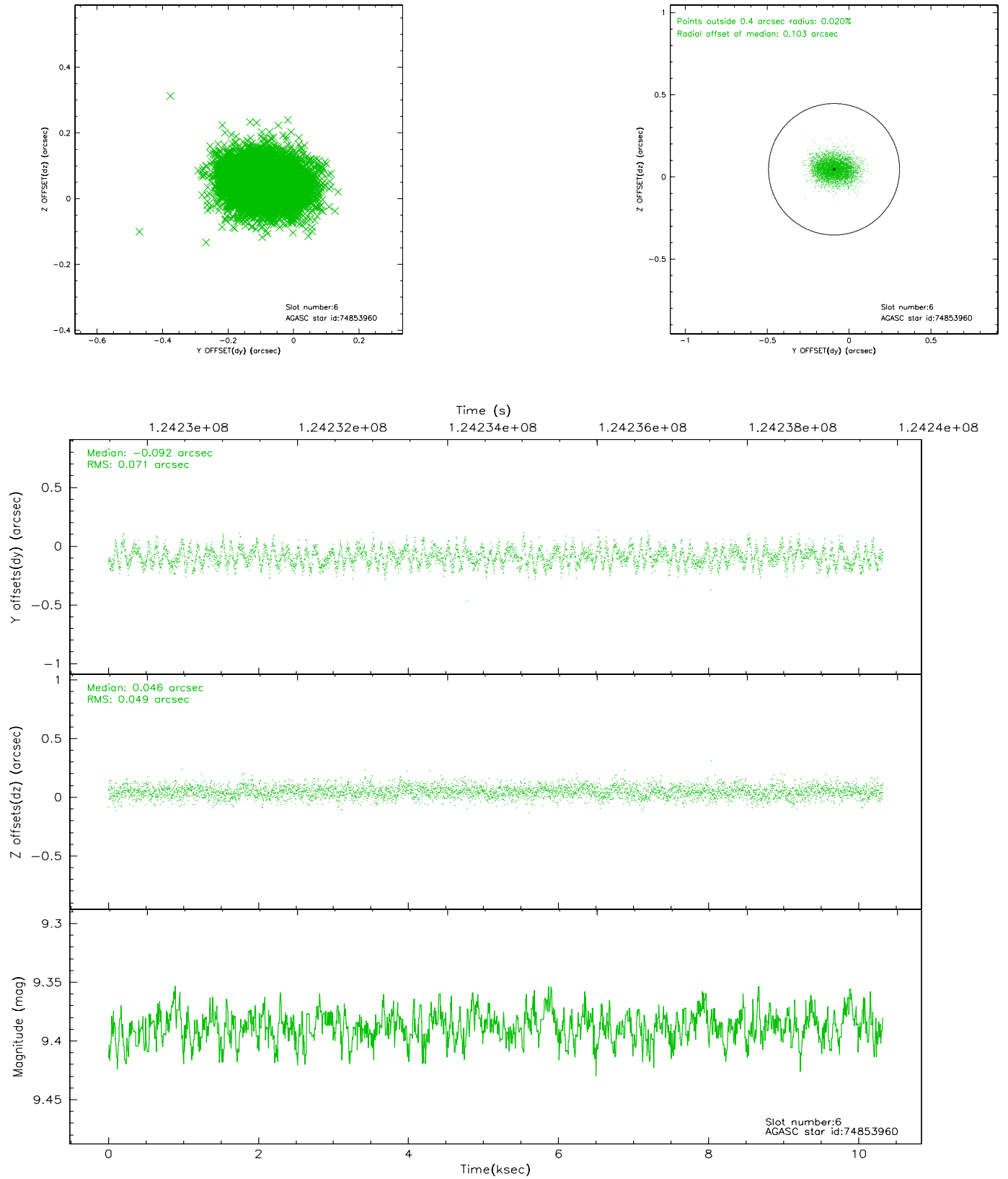
2.4.2 Slot 4



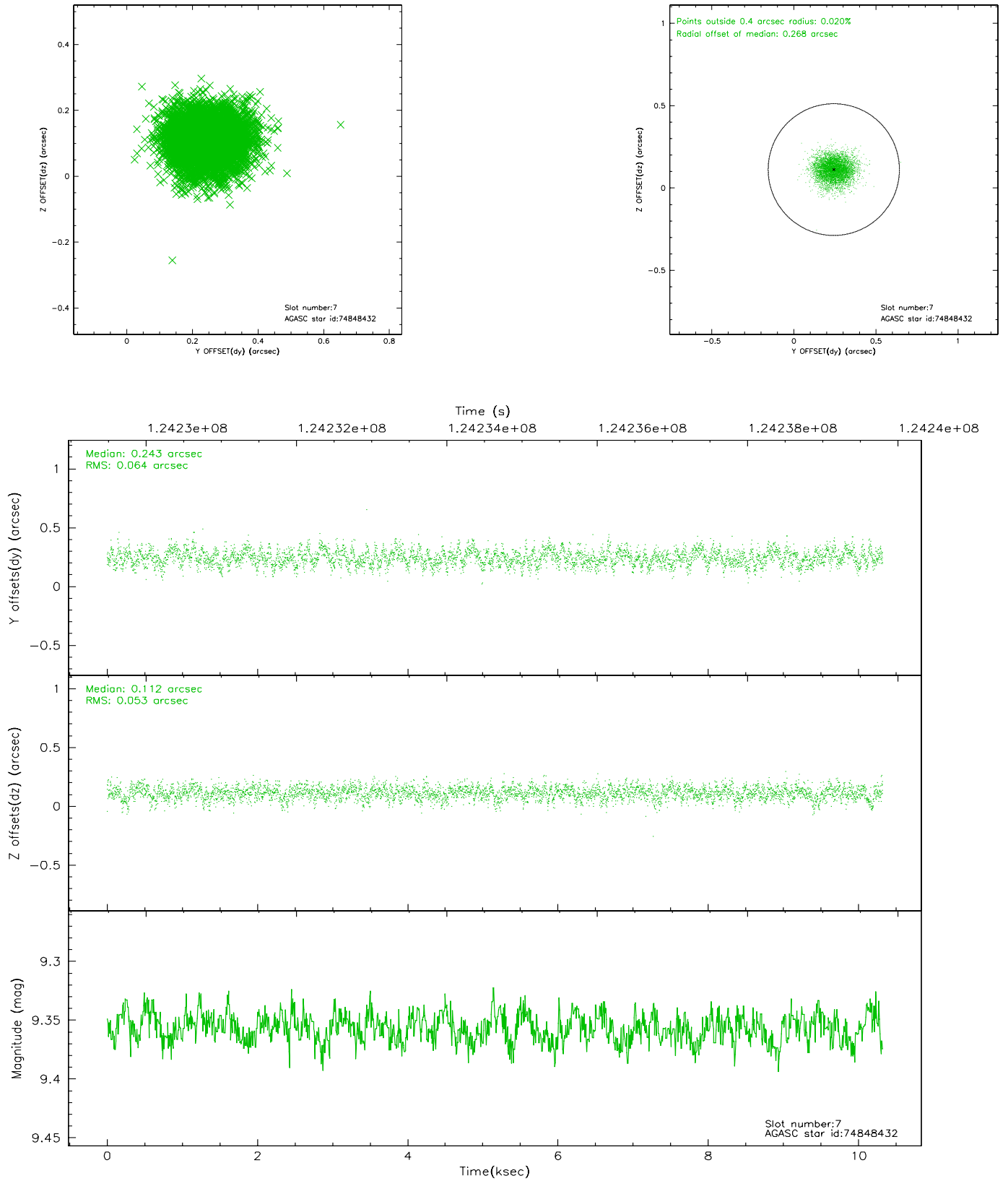
2.4.3 Slot 5



2.4.4 Slot 6

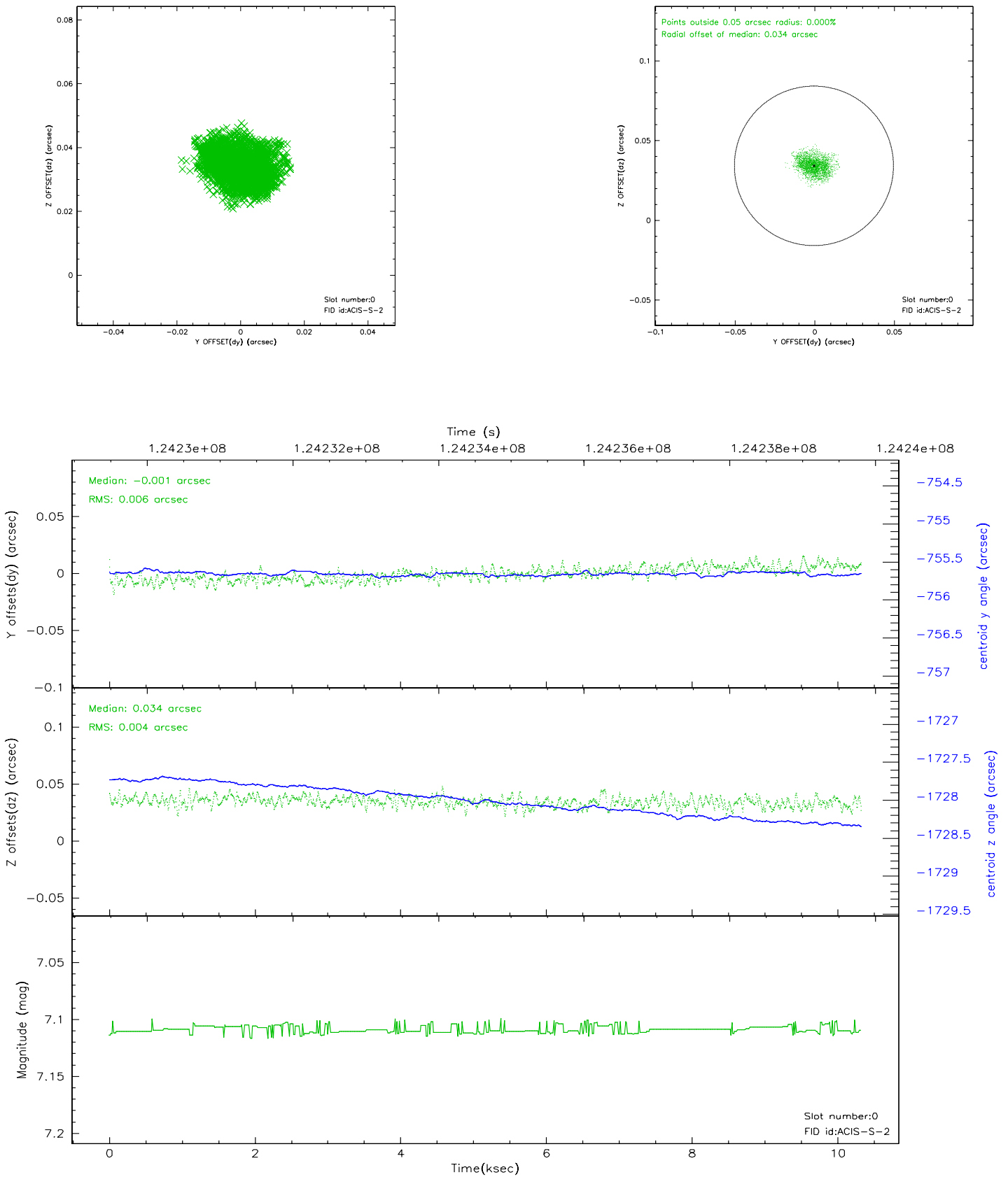


2.4.5 Slot 7

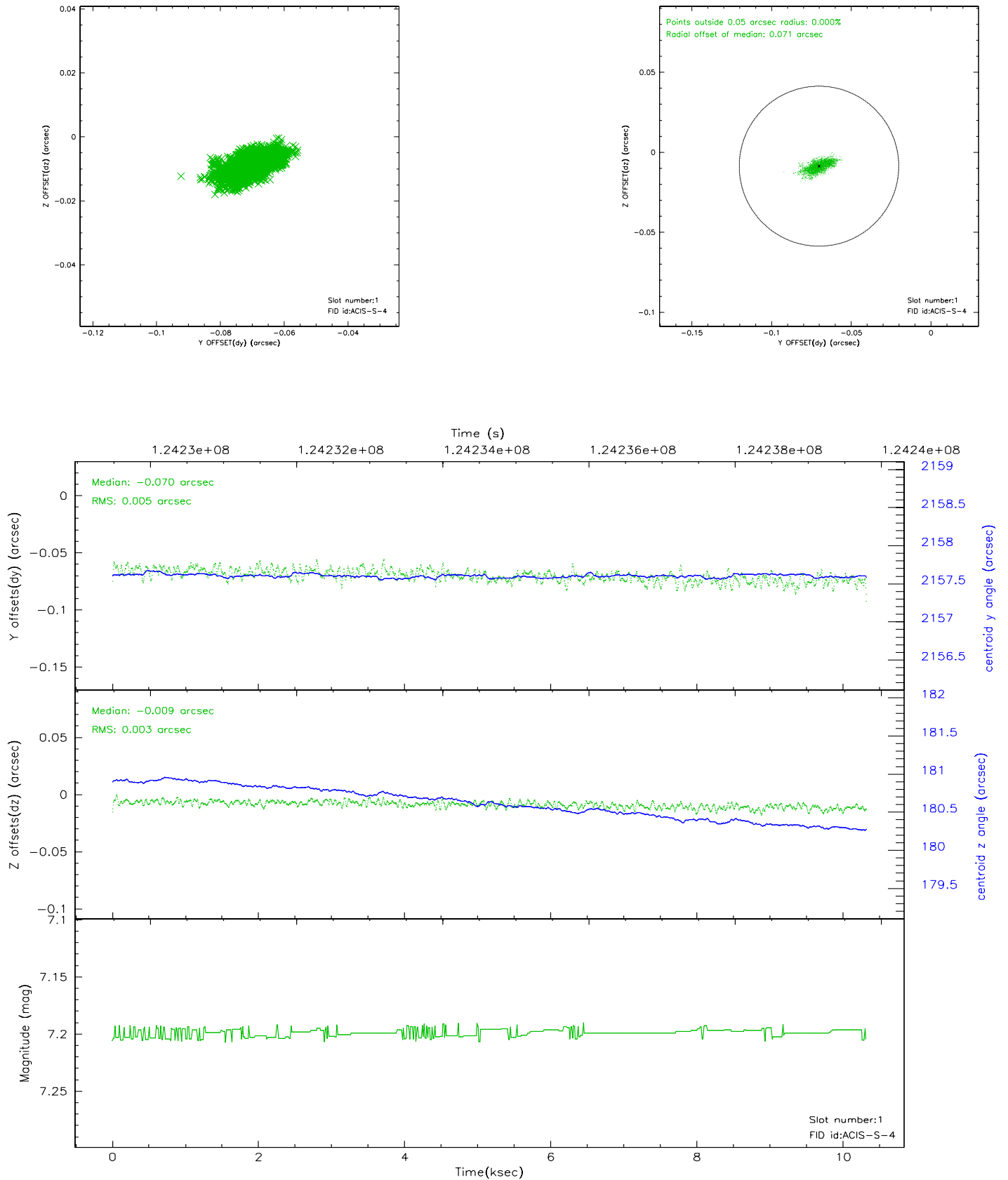


2.5 FID Slots

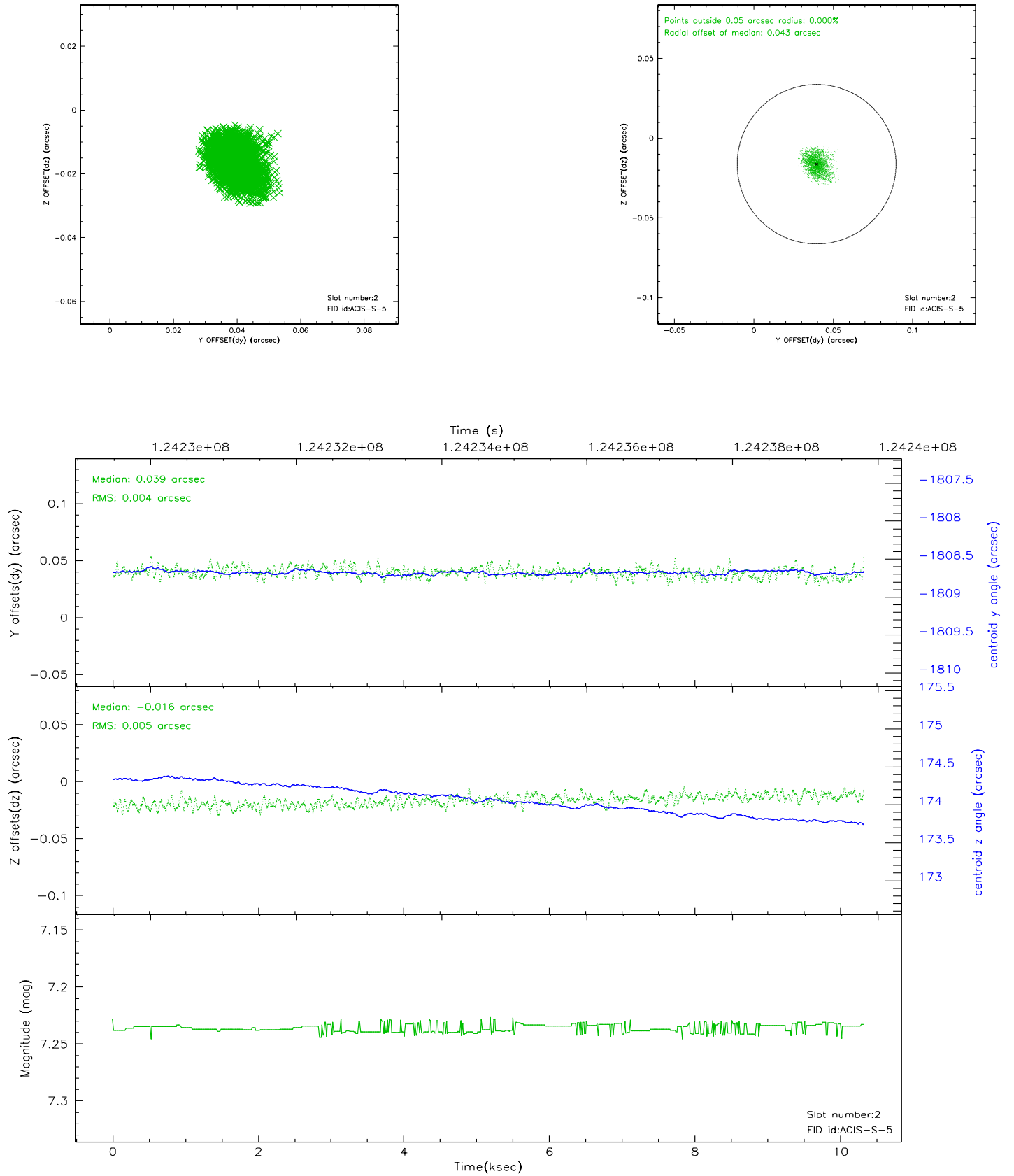
2.5.1 Slot 0



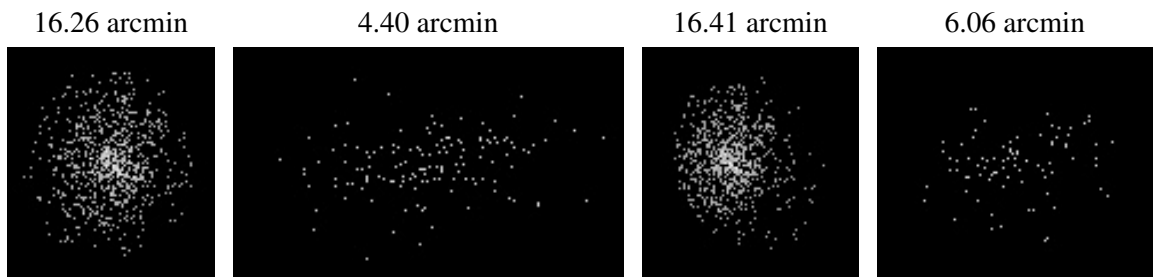
2.5.2 Slot 1



2.5.3 Slot 2



3 Point Sources



A Summary

A.1 Status

V&V Scientist	Beth Sundheim
V&V Date (YYYY-MM-DD)	2007.01.21
V&V Edition	1
V&V Disposition and Status	OK
V&V Charge Time	9.66

A.2 Comments