

V&V Reference Report

L2 ASCDS Version : 7.6.10

Observation 1630 - L2 Version 001
Chandra X-Ray Center

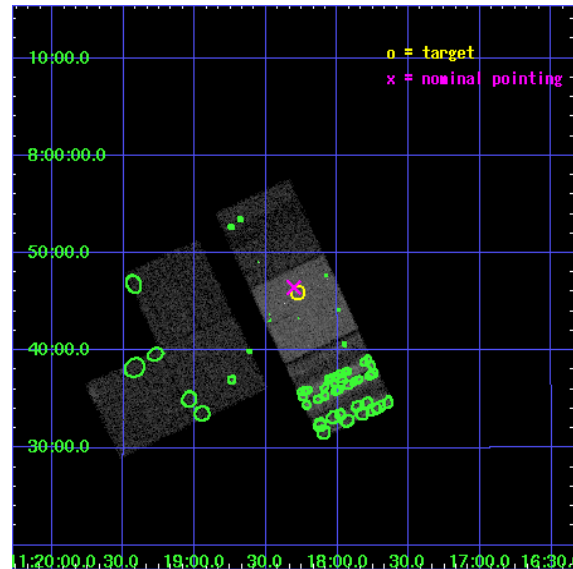
L2 Processing Date : Jun 14 2007

Contents

1	Front	2
2	OBI	3
2.1	OBI	3
2.1.1	Images	3
2.1.2	Bias	3
2.1.3	Parameters	4
2.1.4	Events	4
2.2	Compared Parameters	5
2.3	Aspect	6
2.4	Star Slots	9
2.4.1	Slot 3	9
2.4.2	Slot 4	10
2.4.3	Slot 5	11
2.4.4	Slot 6	12
2.4.5	Slot 7	13
2.5	FID Slots	14
2.5.1	Slot 0	14
2.5.2	Slot 1	15
2.5.3	Slot 2	16
3	Point Sources	17
A	Summary	18
A.1	Status	18
A.2	Comments	18

1 Front

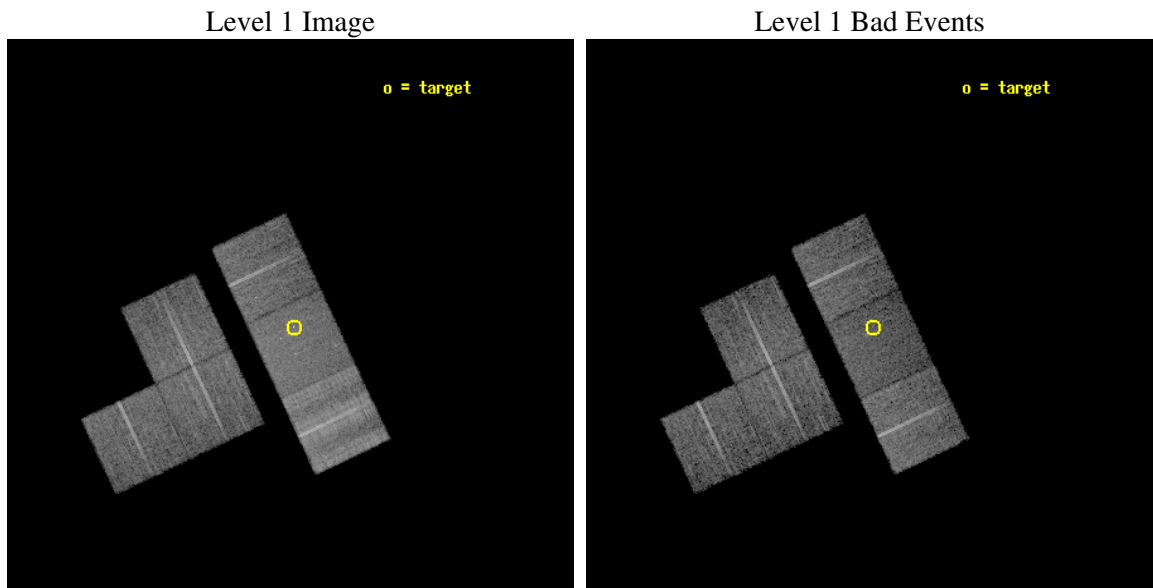
seq_num	700246
obs_id	1630
title	FOLLOW - UP ON CHANDRA SURVEY OF GRAVITATIONAL LENSES FOR TIME-DELAY
observer	Prof. Gordon Garmire
object	PG1115+080
dtcycle	0
cycle	P
ra_targ	169.570417
dec_targ	7.7665
ra_nom	169.57619081092
dec_nom	7.7745204749818
roll_nom	64.856078926105
revision	2
ontime	9952.0000092685
livetime	9825.9817927762
ontime1	9952.0000092685
ontime2	9952.0000092685
ontime3	9952.0000092685
ontime6	9952.0000092685
ontime7	9952.0000092685
ontime8	9952.0000092685
l2events	82999



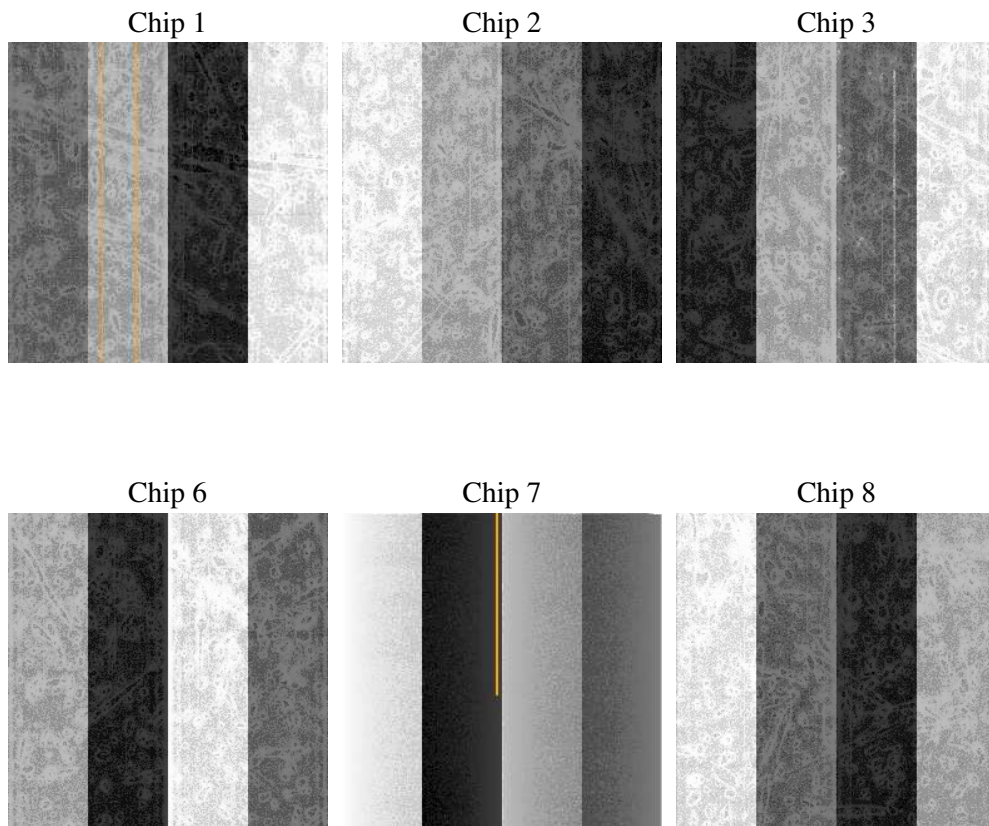
2 OBI

2.1 OBI

2.1.1 Images



2.1.2 Bias



2.1.3 Parameters

obi_num	0
ascdsver	7.6.10
caldbver	3.4.0
date	2007-06-14T10:35:42
revision	2

sched_exp_time	10000.000000
ontime	9952.0000092685
ontime1	9952.0000092685
ontime2	9952.0000092685
ontime3	9952.0000092685
ontime6	9952.0000092685
ontime7	9952.0000092685
ontime8	9952.0000092685
l1events	447993

2.1.4 Events

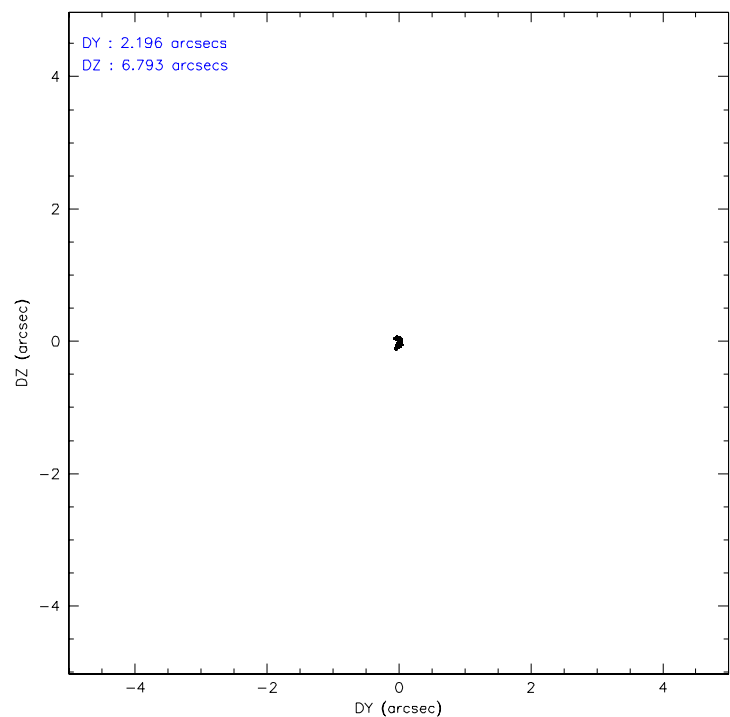
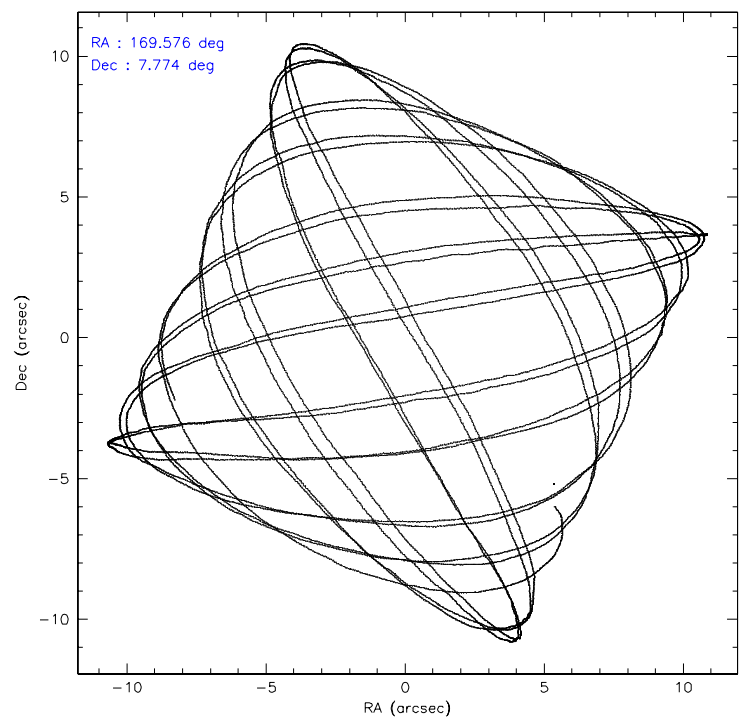
	ccd 1	ccd 2	ccd 3	ccd 6	ccd 7	ccd 8
level 1 events	61194	65018	65120	65831	77132	113698
rejected events	52097	55918	56487	56613	43455	66829
rejected %	85%	86%	86%	85%	56%	58%

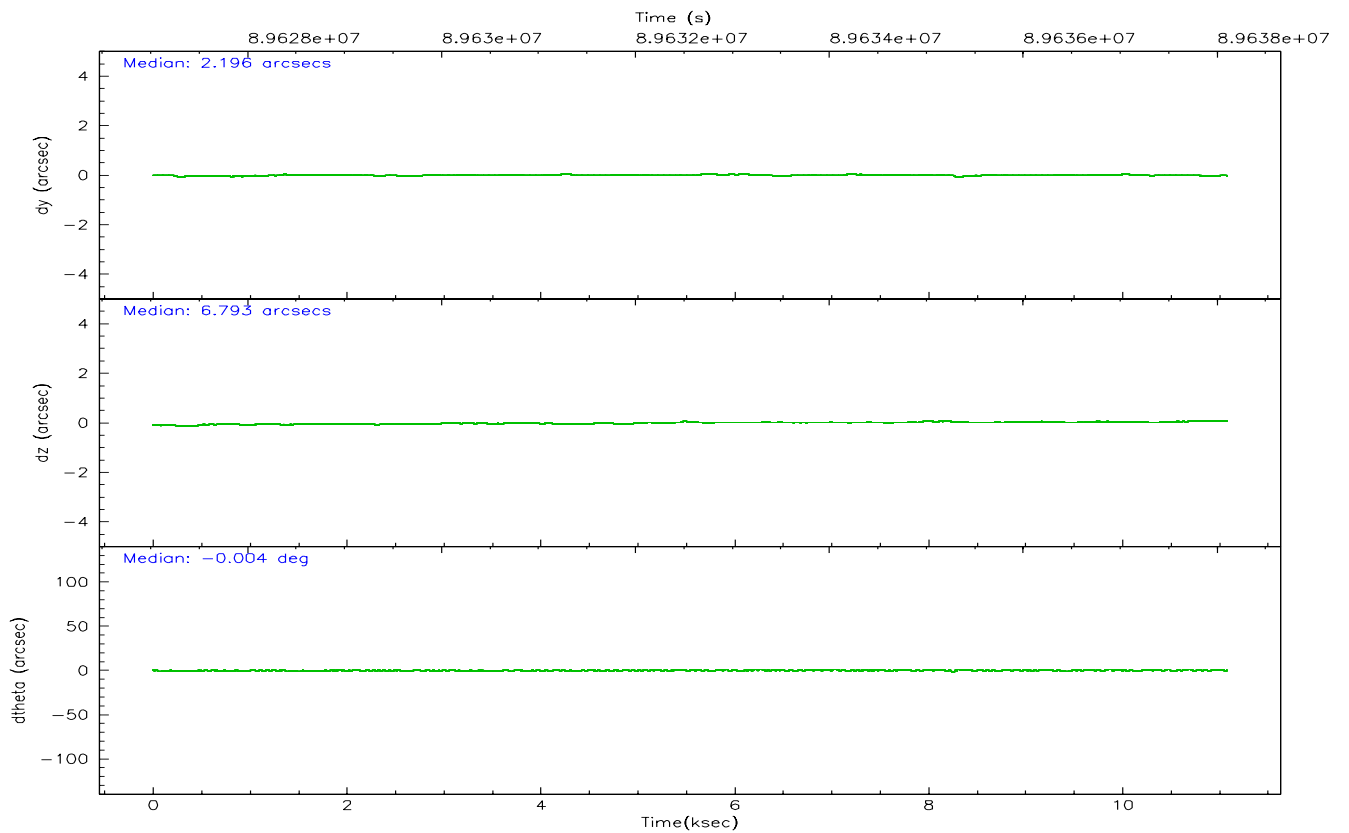
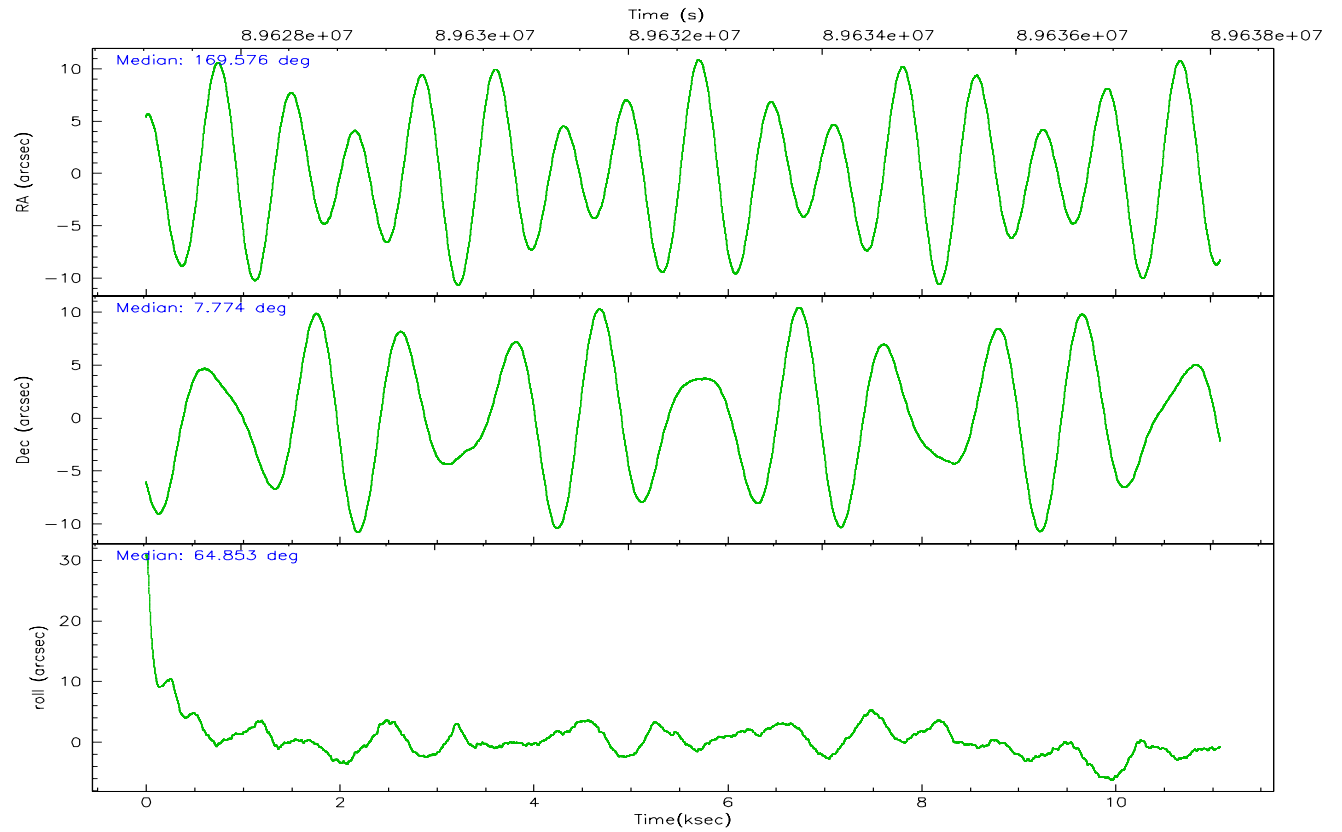
	ccd 1	ccd 2	ccd 3	ccd 6	ccd 7	ccd 8
grade 0 events	3593	3966	3443	3826	3706	16356
	5%	6%	5%	5%	4%	14%
grade 1 events	37	33	30	40	86	141
	0%	0%	0%	0%	0%	0%
grade 2 events	2154	2043	2087	2196	6904	6243
	3%	3%	3%	3%	8%	5%
grade 3 events	749	672	644	690	3161	8597
	1%	1%	0%	1%	4%	7%
grade 4 events	727	747	658	708	3056	7689
	1%	1%	1%	1%	3%	6%
grade 5 events	2254	1958	2189	2512	7097	3373
	3%	3%	3%	3%	9%	2%
grade 6 events	1878	1674	1801	1801	16867	7989
	3%	2%	2%	2%	21%	7%
grade 7 events	49802	53925	54268	54058	36255	63310
	81%	82%	83%	82%	47%	55%

2.2 Compared Parameters

Parameter	Planned	Actual	Parameter	Planned	Actual
Instrument	ACIS	ACIS	Obspar format version number	6	6
Detector	ACIS-123678	ACIS-123678	Obspar file type	PREDICTED	ACTUAL
Grating	NONE	NONE	Obspar update status	NONE	UPDATED
Data mode	FAINT	FAINT	Number of optional ACIS chips dropped	0	0
Observation mode	POINTING	POINTING	On-chip summing requested	N	N
Pointing RA	169.578743	169.5761908109212	Subarray requested	NONE	NONE
Pointing Dec	7.747299	7.774520474981793	Alternating exposures requested	N	N
Pointing Roll	64.699112	64.85607892610486	Primary exposure time	0.000000	3.2
SIM focus pos (mm)	-0.684267	-0.6828225247311905			
SIM defocus (mm)	0	0.001444936568705701			
SIM translation stage pos (mm)	-190.132523	-190.1400660498719			
SIM translation stage offset (mm)	0	0.00754346686406393			
Observation start time	89628103.184000	89626694.44539399			
Observation start date	2000-11-03T08:40:39	2000-11-03T08:18:14			
Observation end time	89638103.184000	89639003.15835901			
Observation end date	2000-11-03T11:27:19	2000-11-03T11:43:23			
Read mode	TIMED	TIMED			

2.3 Aspect



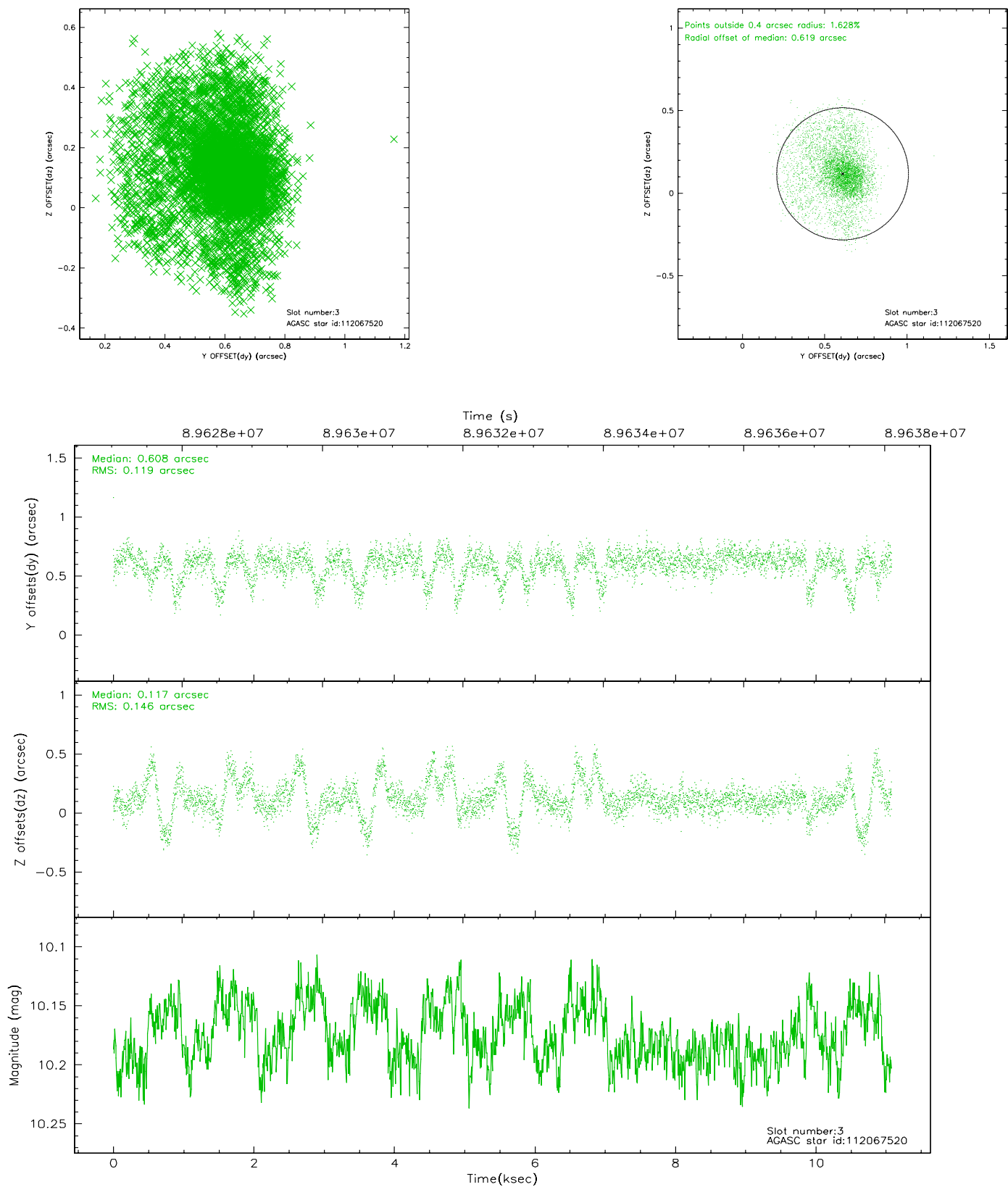


Slot Statistics

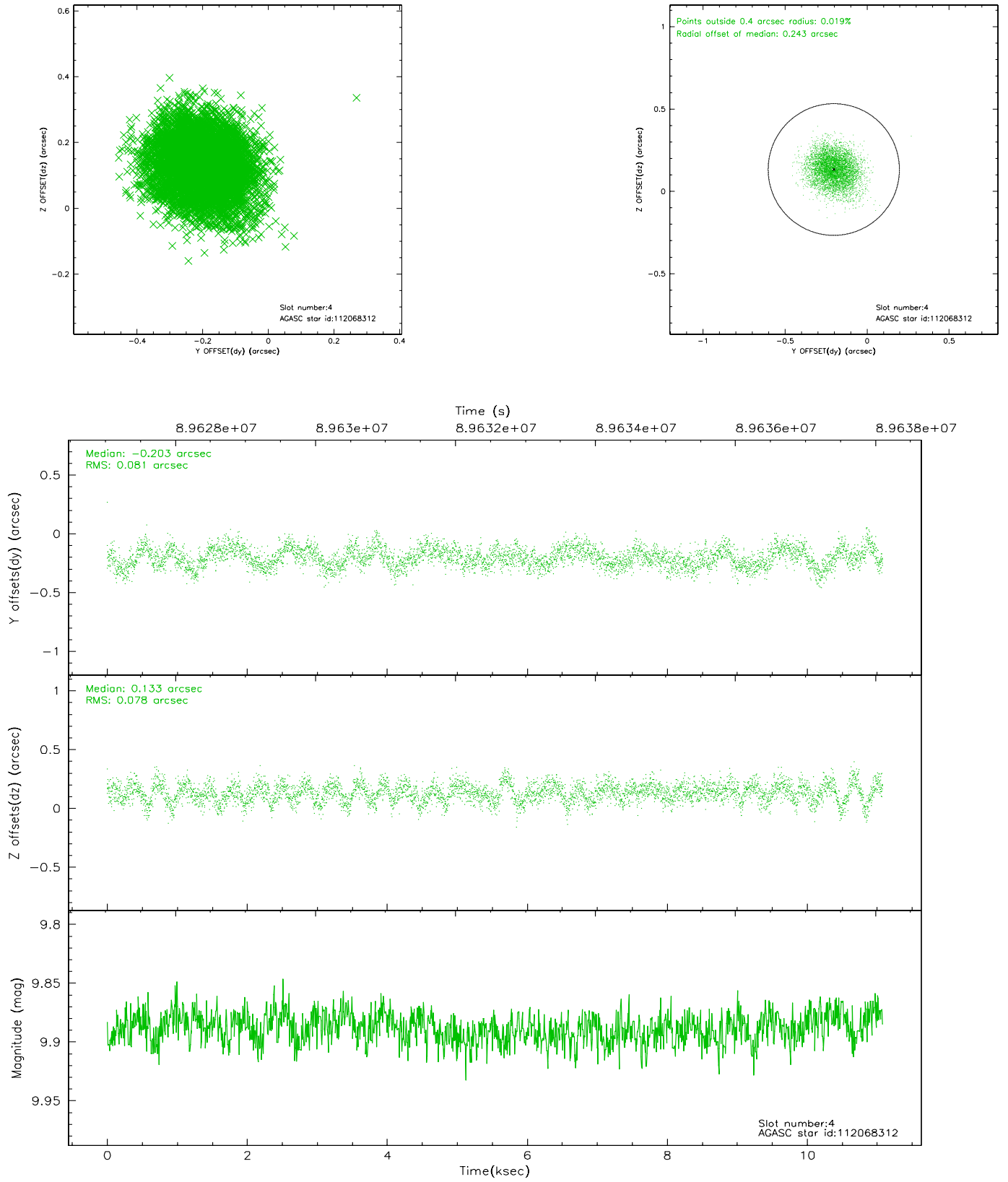
slot	status	id	mag	n_pts	med_dy	med_dz	dr1	dr2	ra	dec	mean_y	mean_z
0	FID	ACIS-S-2	7.11	2703	-0.016	0.021	0.007	0.011	0.000000	0.000000	-754.83	-1727.92
1	FID	ACIS-S-4	7.20	2703	-0.071	0.002	0.005	0.009	0.000000	0.000000	2158.18	180.06
2	FID	ACIS-S-5	7.23	2702	0.056	-0.014	0.006	0.010	0.000000	0.000000	-1807.00	174.24
3	GUIDE	112067520	10.17	5405	0.608	0.117	0.190	0.358	169.288653	7.745293	-446.78	932.49
4	GUIDE	112068312	9.89	5403	-0.203	0.133	0.122	0.190	169.673636	8.146330	1444.08	308.38
5	GUIDE	112068528	8.77	5405	0.018	0.210	0.079	0.131	169.984852	7.578312	71.46	-1569.85
6	GUIDE	35259424	9.22	5404	-0.124	-0.263	0.077	0.123	169.225147	7.406887	-1645.97	616.92
7	GUIDE	35262512	9.42	5402	-0.280	-0.202	0.101	0.169	169.912813	6.863684	-2364.69	-2439.42

2.4 Star Slots

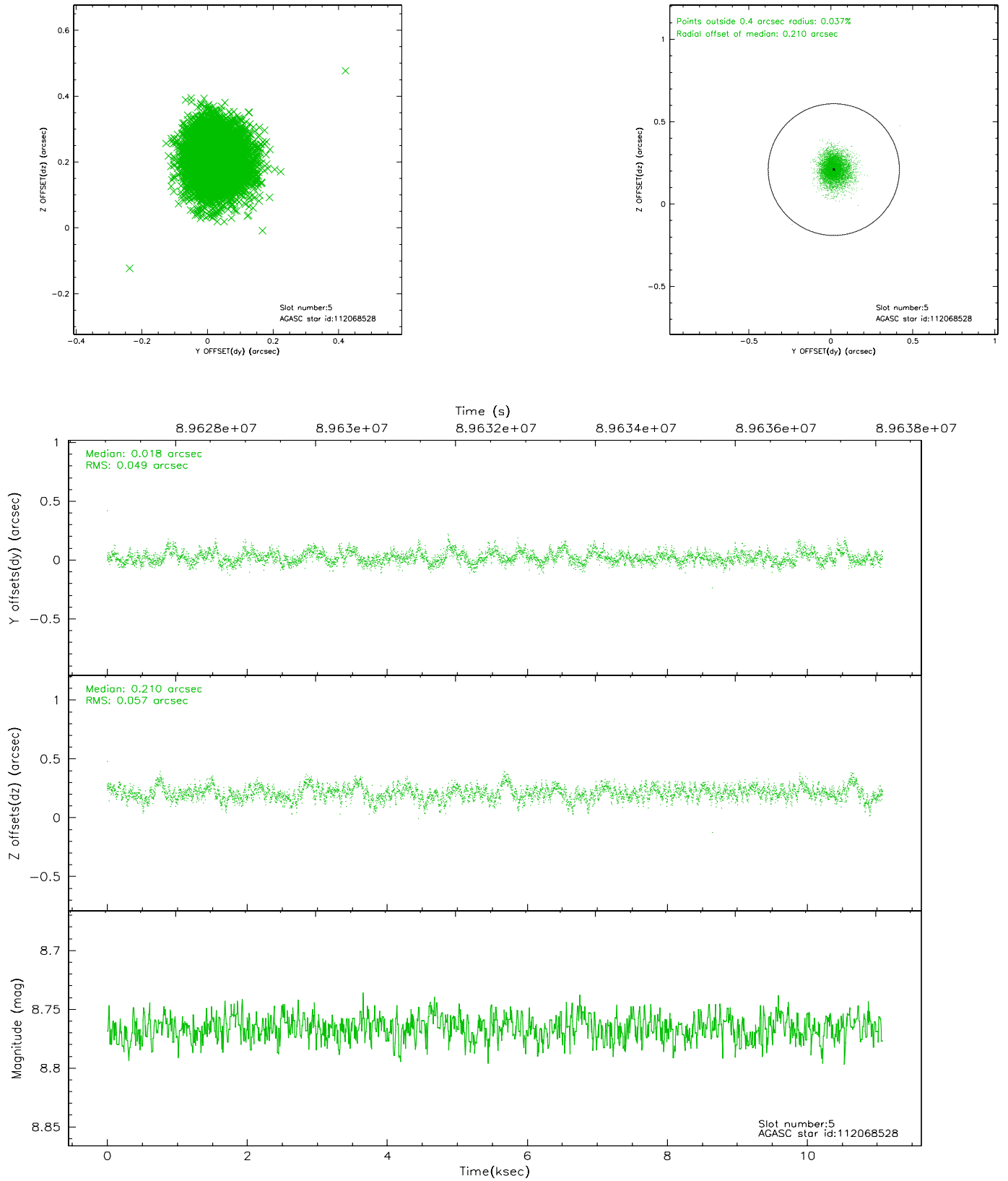
2.4.1 Slot 3



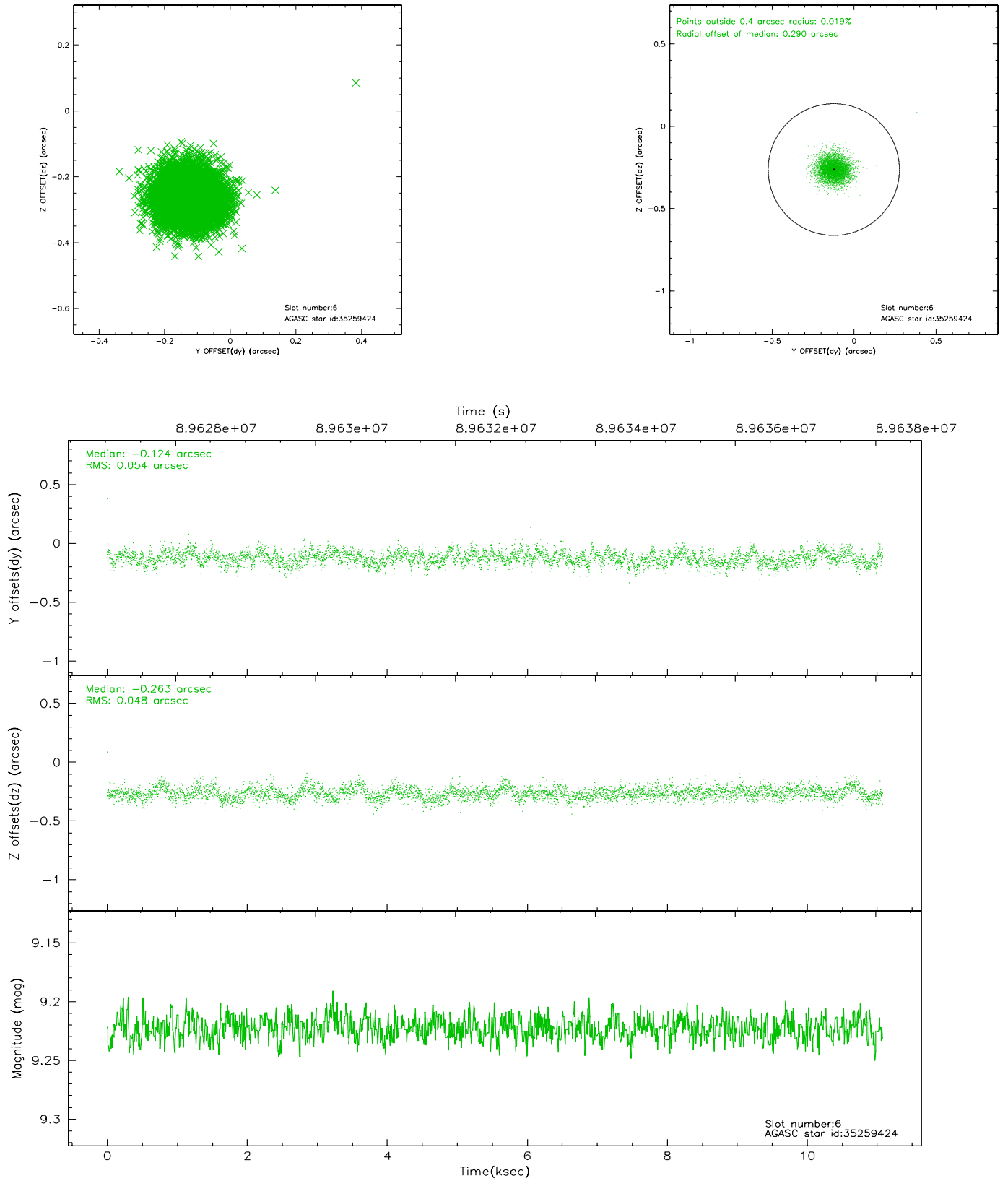
2.4.2 Slot 4



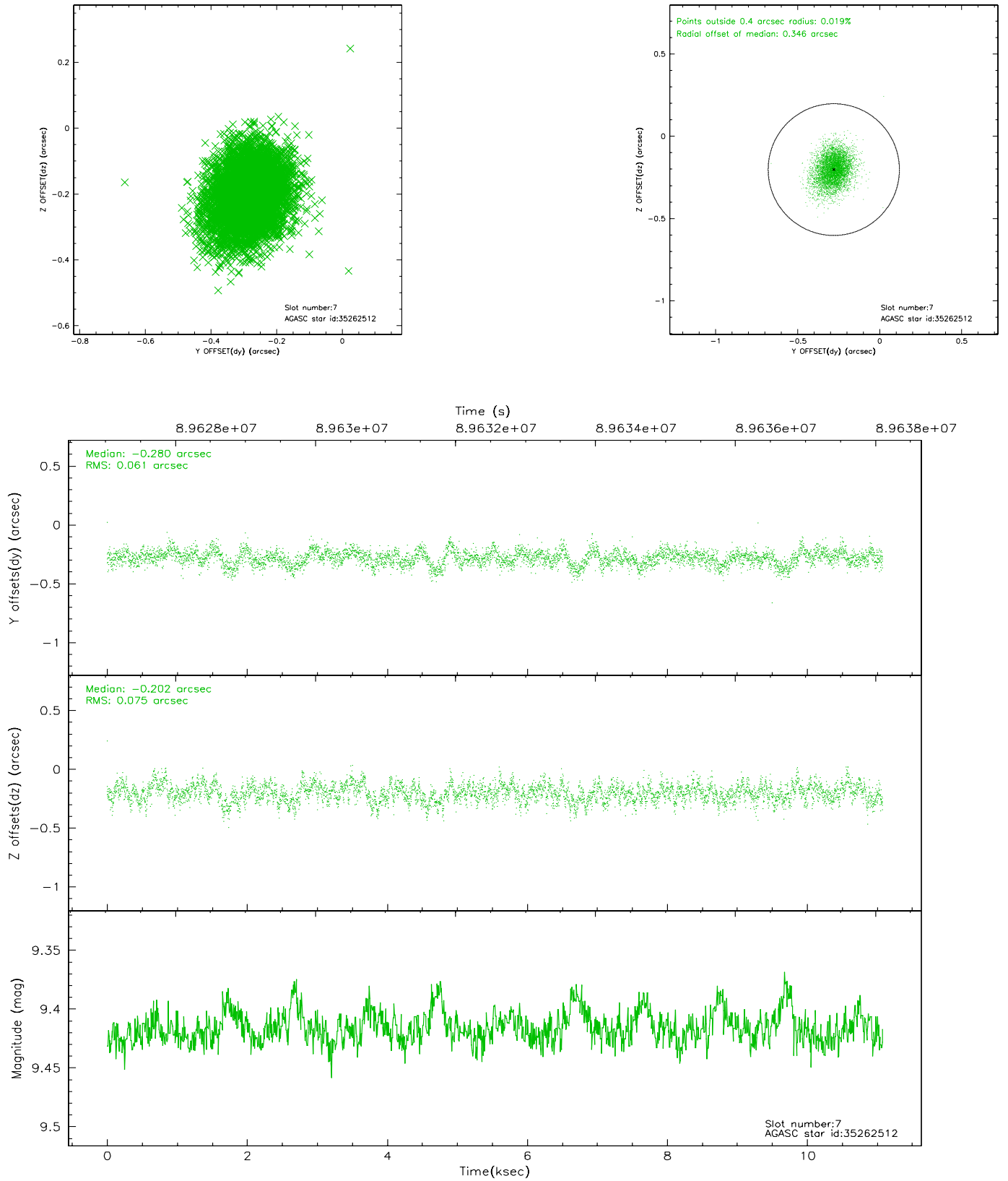
2.4.3 Slot 5



2.4.4 Slot 6

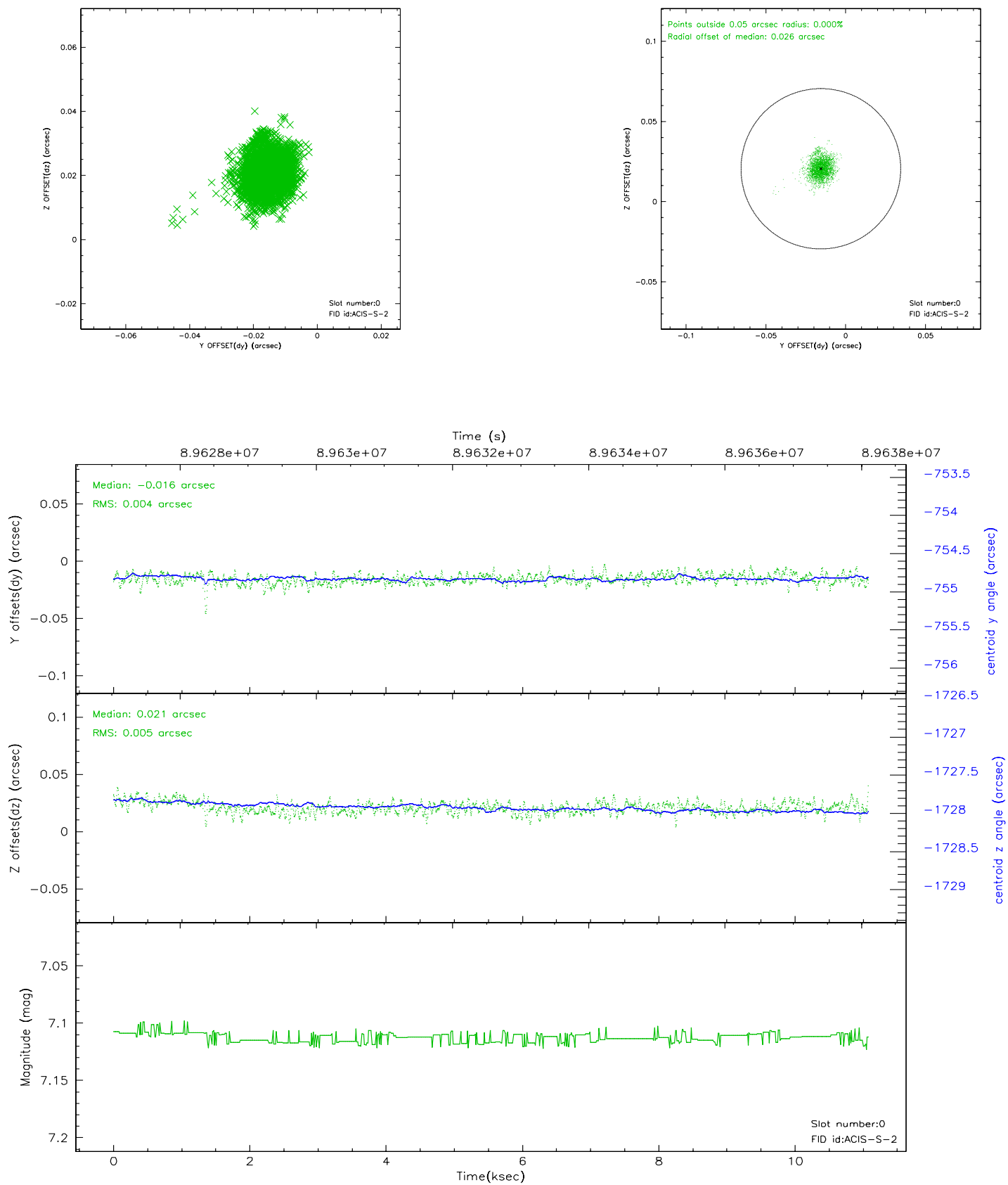


2.4.5 Slot 7

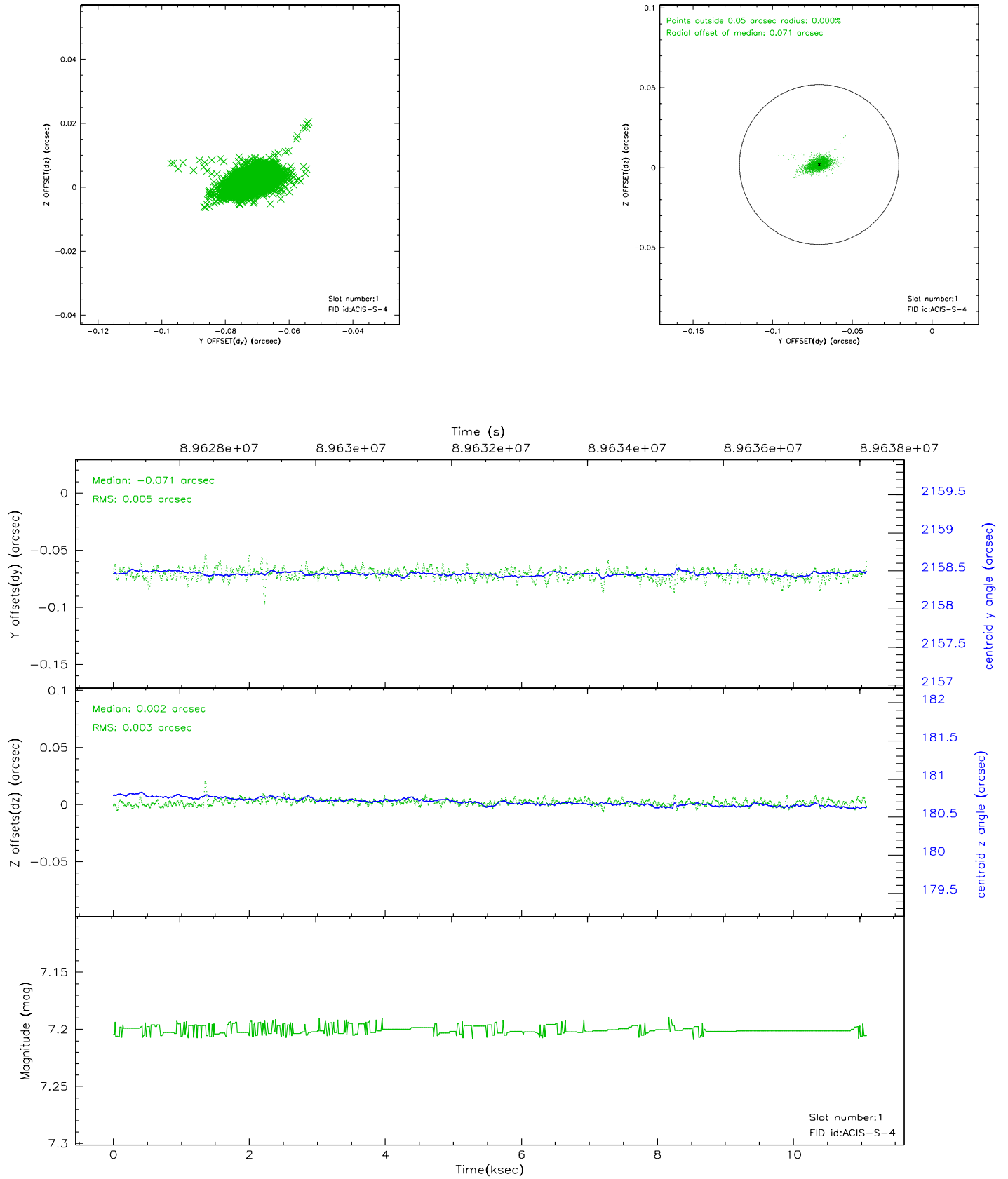


2.5 FID Slots

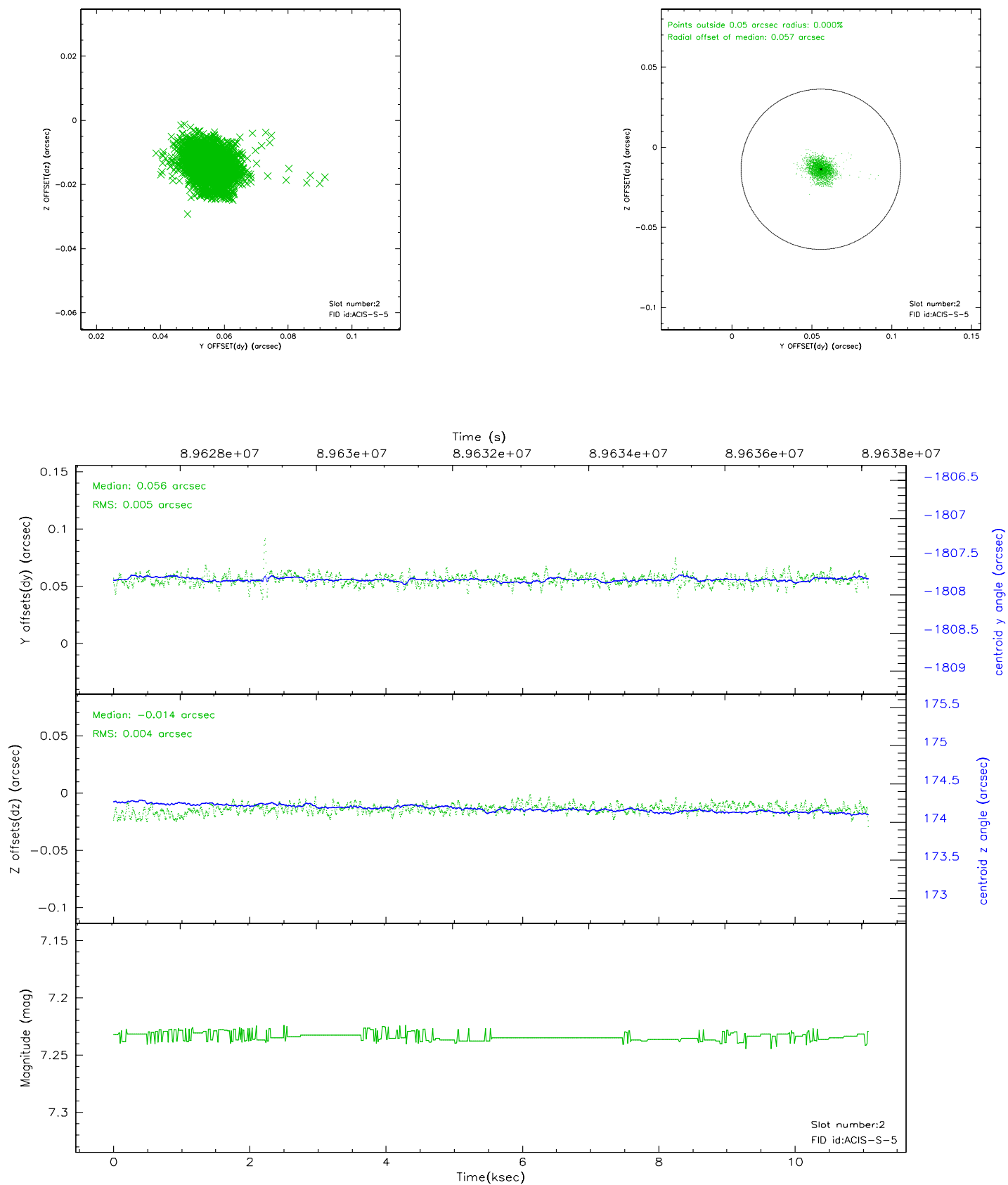
2.5.1 Slot 0



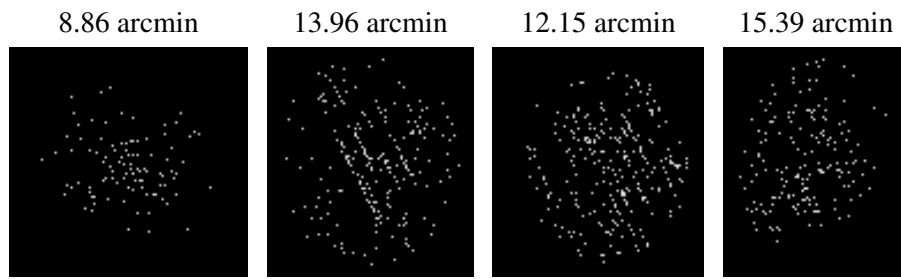
2.5.2 Slot 1



2.5.3 Slot 2



3 Point Sources



A Summary

A.1 Status

V&V Scientist	Beth Sundheim
V&V Date (YYYY-MM-DD)	2007.06.14
V&V Edition	1
V&V Disposition and Status	OK
V&V Charge Time	9.952

A.2 Comments