

V&V Reference Report

L2 ASCDS Version : 7.6.9

Observation 1628 - L2 Version 001
Chandra X-Ray Center

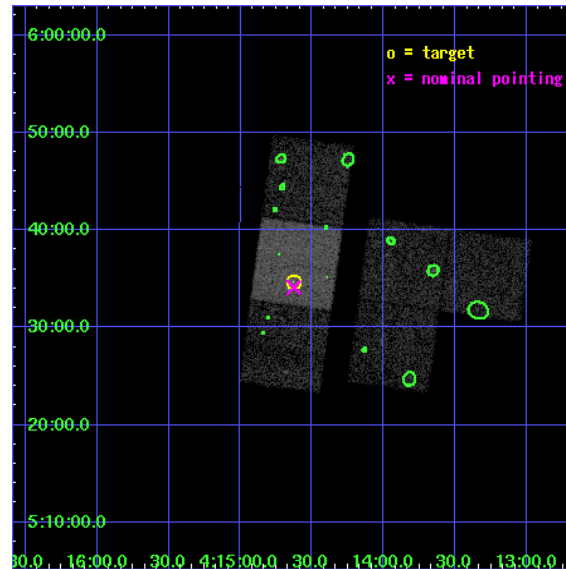
L2 Processing Date : Nov 6 2006

Contents

| | | |
|----------|-------------------------------|-----------|
| 1 | Front | 2 |
| 2 | OBI | 3 |
| 2.1 | OBI | 3 |
| 2.1.1 | Images | 3 |
| 2.1.2 | Bias | 3 |
| 2.1.3 | Parameters | 4 |
| 2.1.4 | Events | 4 |
| 2.2 | Compared Parameters | 5 |
| 2.3 | Aspect | 6 |
| 2.4 | Star Slots | 9 |
| 2.4.1 | Slot 3 | 9 |
| 2.4.2 | Slot 4 | 10 |
| 2.4.3 | Slot 5 | 11 |
| 2.4.4 | Slot 6 | 12 |
| 2.4.5 | Slot 7 | 13 |
| 2.5 | FID Slots | 14 |
| 2.5.1 | Slot 0 | 14 |
| 2.5.2 | Slot 1 | 15 |
| 2.5.3 | Slot 2 | 16 |
| 3 | Point Sources | 17 |
| A | Summary | 18 |
| A.1 | Status | 18 |
| A.2 | Comments | 18 |

1 Front

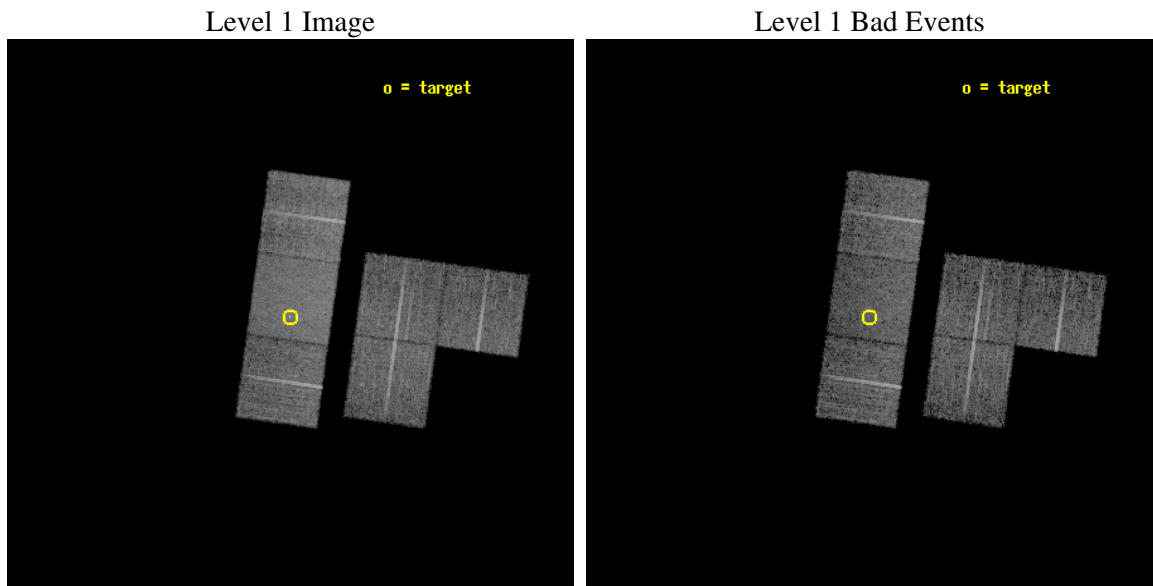
| | |
|----------|--|
| seq_num | 700244 |
| obs_id | 1628 |
| title | FOLLOW - UP ON CHANDRA SURVEY OF GRAVITATIONAL LENSES FOR TIME-DELAY |
| observer | Professor Gordon Garmire |
| object | MITG J0414+0534 |
| dtcycle | 0 |
| cycle | P |
| ra_targ | 63.657083 |
| dec_targ | 5.578333 |
| ra_nom | 63.656661880552 |
| dec_nom | 5.5685491998499 |
| roll_nom | 277.90042681206 |
| revision | 2 |
| ontime | 9136.0000085086 |
| livetime | 9020.3144753621 |
| ontime1 | 9136.0000085086 |
| ontime2 | 9136.0000085086 |
| ontime3 | 9136.0000085086 |
| ontime6 | 9136.0000085086 |
| ontime7 | 9136.0000085086 |
| ontime8 | 9136.0000085086 |
| l2events | 55813 |



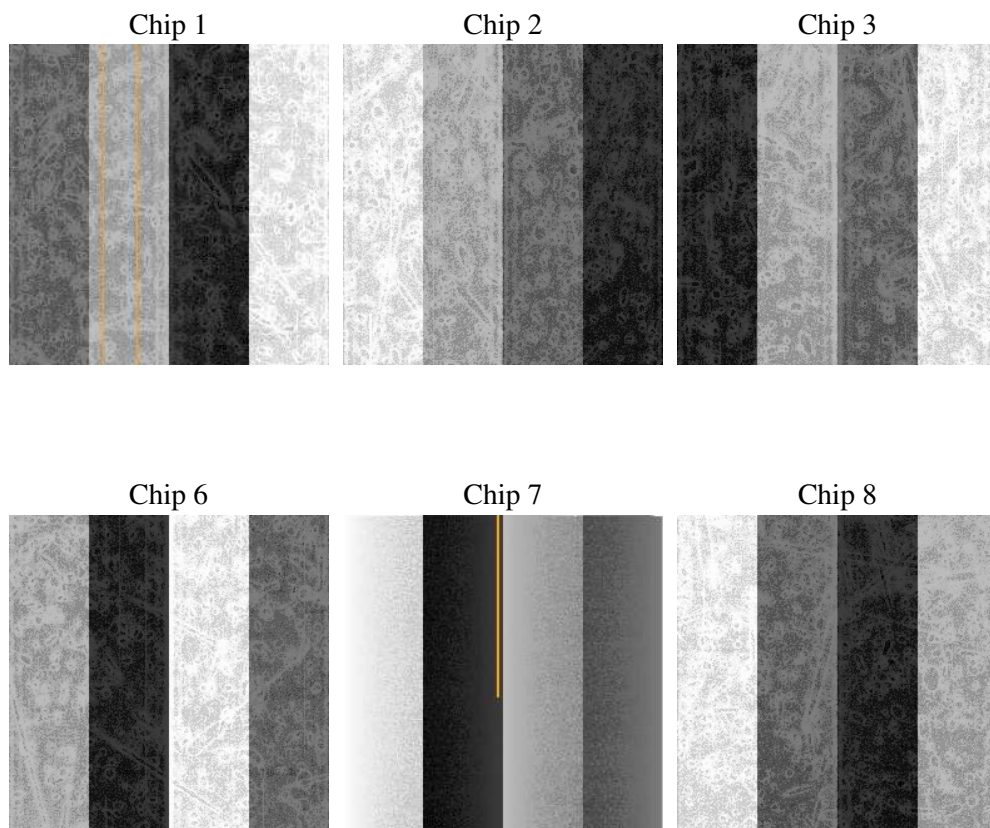
2 OBI

2.1 OBI

2.1.1 Images



2.1.2 Bias



2.1.3 Parameters

| | |
|----------|---------------------|
| obi_num | 0 |
| ascdsver | 7.6.9 |
| caldbver | 3.2.3 |
| date | 2006-11-06T13:48:07 |
| revision | 2 |

| | |
|----------------|-----------------|
| sched_exp_time | 9000.000000 |
| ontime | 10938.371511474 |
| ontime1 | 10938.371481568 |
| ontime2 | 10938.371481568 |
| ontime3 | 10938.371511474 |
| ontime6 | 10938.371511474 |
| ontime7 | 10938.371511474 |
| ontime8 | 10938.371511474 |
| l1events | 429583 |

2.1.4 Events

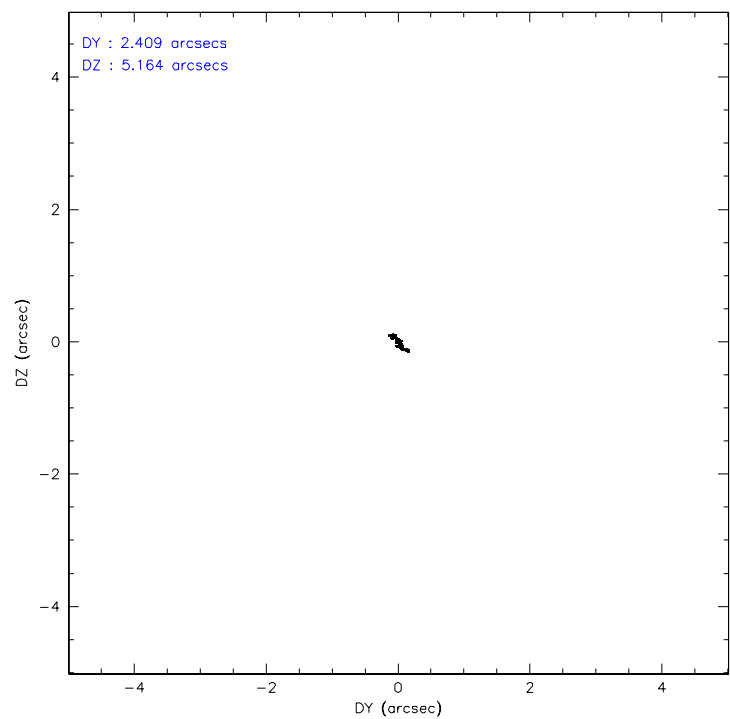
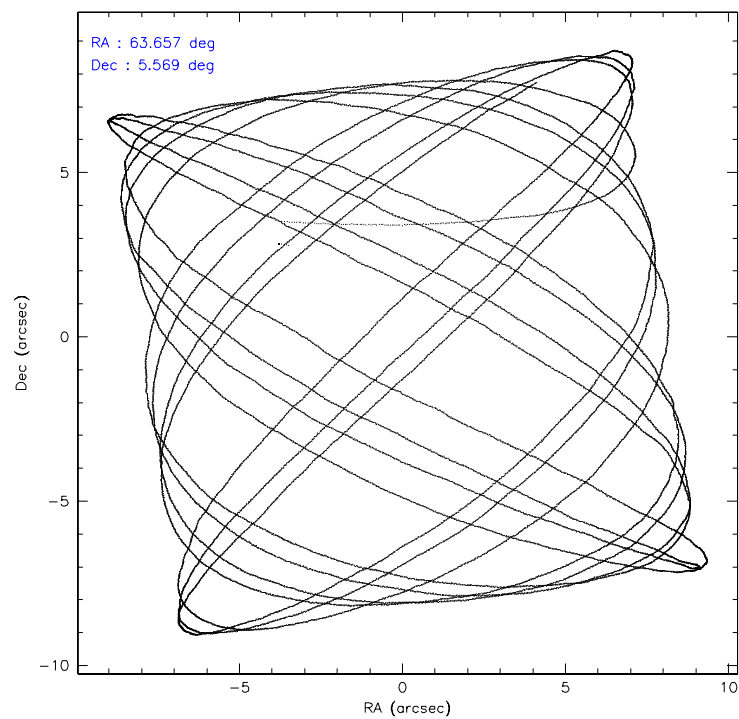
| | ccd 1 | ccd 2 | ccd 3 | ccd 6 | ccd 7 | ccd 8 |
|-----------------|-------|-------|-------|-------|-------|-------|
| level 1 events | 62097 | 64255 | 64341 | 66948 | 86138 | 85804 |
| rejected events | 55443 | 58145 | 58062 | 60620 | 57843 | 70912 |
| rejected % | 89% | 90% | 90% | 90% | 67% | 82% |

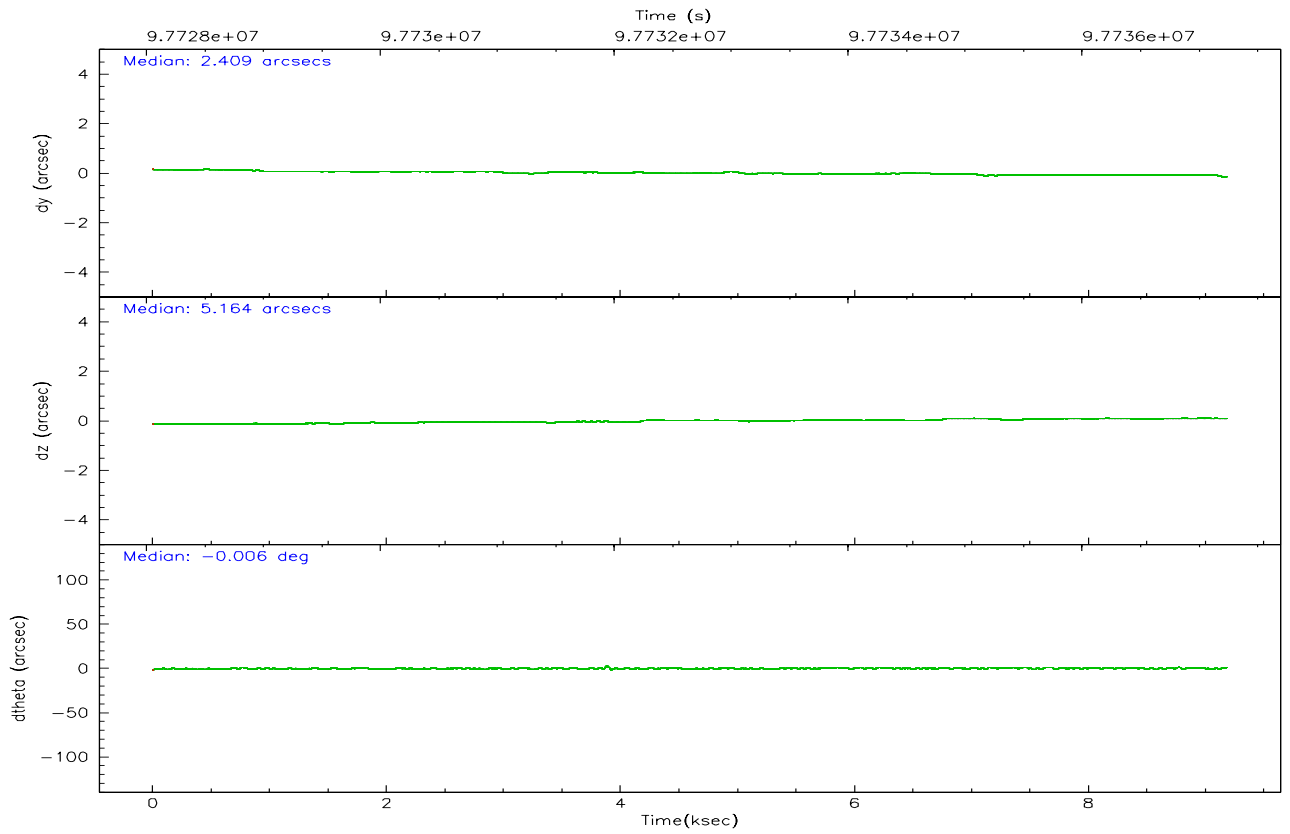
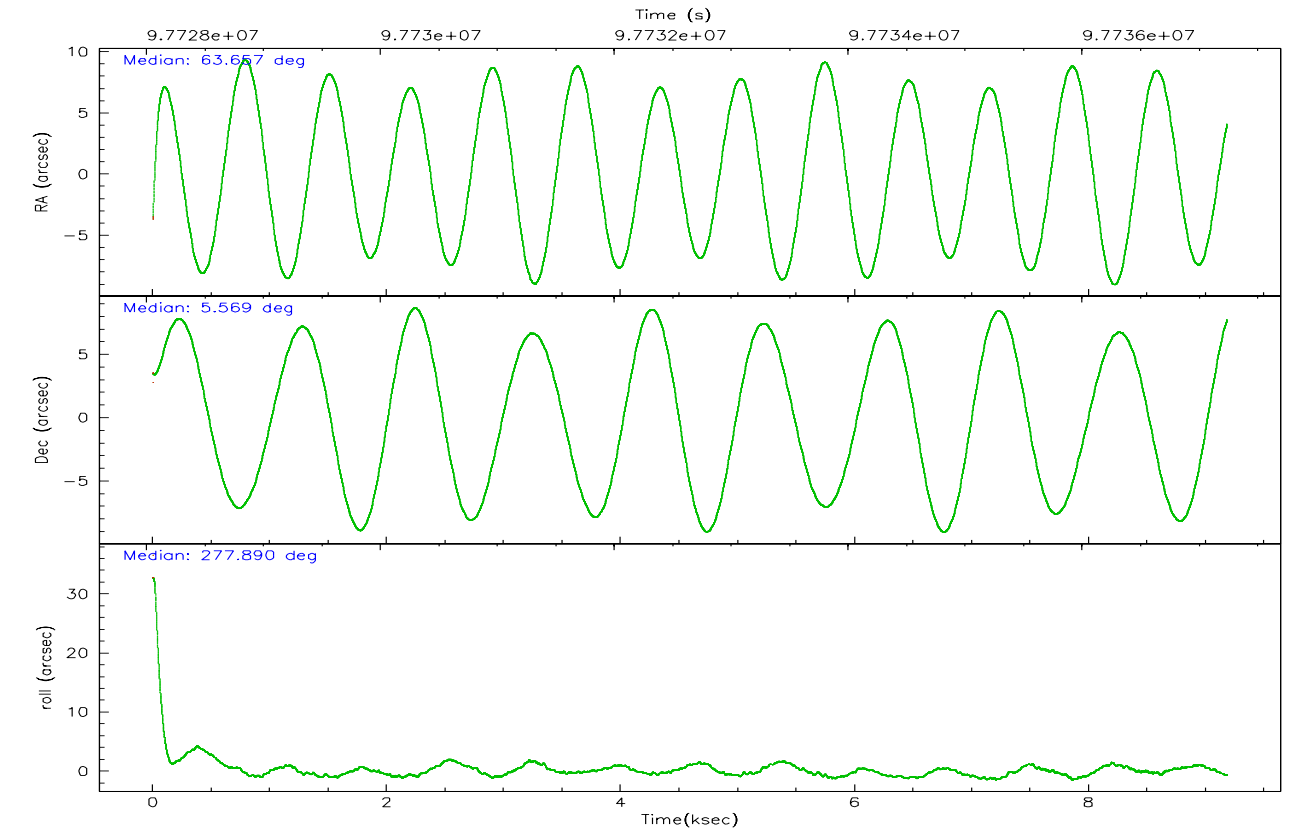
| | ccd 1 | ccd 2 | ccd 3 | ccd 6 | ccd 7 | ccd 8 |
|----------------|-------|-------|-------|-------|-------|-------|
| grade 0 events | 3087 | 3049 | 3308 | 3067 | 2303 | 5658 |
| | 4% | 4% | 5% | 4% | 2% | 6% |
| grade 1 events | 31 | 30 | 40 | 28 | 50 | 61 |
| | 0% | 0% | 0% | 0% | 0% | 0% |
| grade 2 events | 1641 | 1555 | 1427 | 1549 | 8217 | 3599 |
| | 2% | 2% | 2% | 2% | 9% | 4% |
| grade 3 events | 816 | 738 | 691 | 726 | 1925 | 1949 |
| | 1% | 1% | 1% | 1% | 2% | 2% |
| grade 4 events | 835 | 711 | 701 | 709 | 1860 | 1815 |
| | 1% | 1% | 1% | 1% | 2% | 2% |
| grade 5 events | 2492 | 2207 | 2557 | 2809 | 5766 | 3570 |
| | 4% | 3% | 3% | 4% | 6% | 4% |
| grade 6 events | 1587 | 1262 | 1363 | 1534 | 19533 | 4562 |
| | 2% | 1% | 2% | 2% | 22% | 5% |
| grade 7 events | 51608 | 54703 | 54254 | 56526 | 46484 | 64590 |
| | 83% | 85% | 84% | 84% | 53% | 75% |

2.2 Compared Parameters

| Parameter | Planned | Actual | Parameter | Planned | Actual |
|-----------------------------------|---------------------|----------------------|---------------------------------------|-----------|---------|
| Instrument | ACIS | ACIS | Obspar format version number | 6 | 6 |
| Detector | ACIS-123678 | ACIS-123678 | Obspar file type | PREDICTED | ACTUAL |
| Grating | NONE | NONE | Obspar update status | NONE | UPDATED |
| Data mode | FAINT | FAINT | Number of optional ACIS chips dropped | 0 | 0 |
| Observation mode | POINTING | POINTING | On-chip summing requested | N | N |
| Pointing RA | 63.639610 | 63.6566618805523 | Subarray requested | NONE | NONE |
| Pointing Dec | 5.589932 | 5.568549199849933 | Alternating exposures requested | N | N |
| Pointing Roll | 277.745426 | 277.9004268120611 | Primary exposure time | 0.000000 | 3.2 |
| SIM focus pos (mm) | -0.684267 | -0.6828225247311905 | | | |
| SIM defocus (mm) | 0 | 0.001444936568705701 | | | |
| SIM translation stage pos (mm) | -190.132523 | -190.1400660498719 | | | |
| SIM translation stage offset (mm) | 0 | 0.00754346686406393 | | | |
| Observation start time | 97728205.184000 | 97726245.780269 | | | |
| Observation start date | 2001-02-05T02:42:21 | 2001-02-05T02:10:45 | | | |
| Observation end time | 97737205.184000 | 97738195.230729 | | | |
| Observation end date | 2001-02-05T05:12:21 | 2001-02-05T05:29:55 | | | |
| Read mode | TIMED | TIMED | | | |

2.3 Aspect



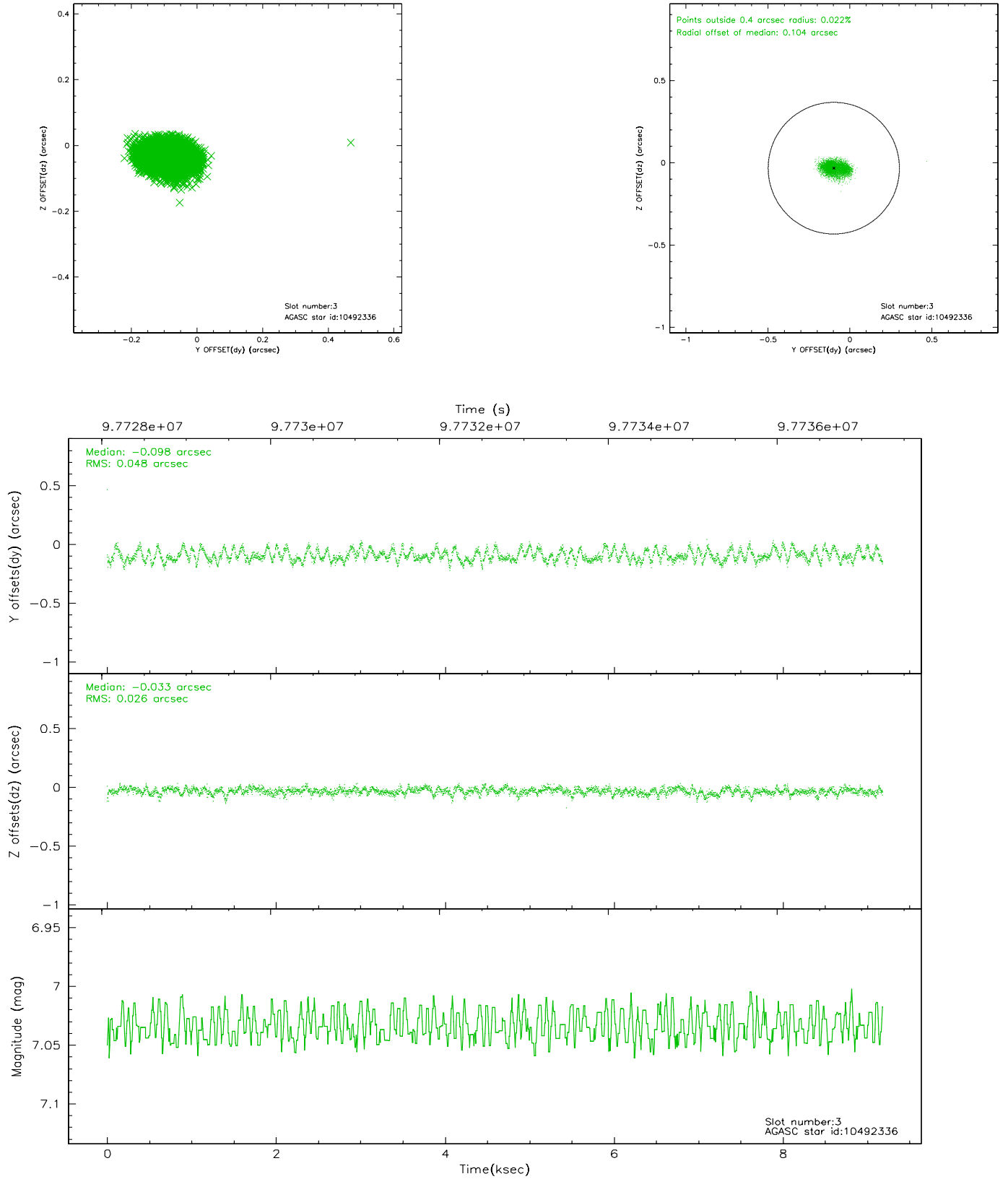


Slot Statistics

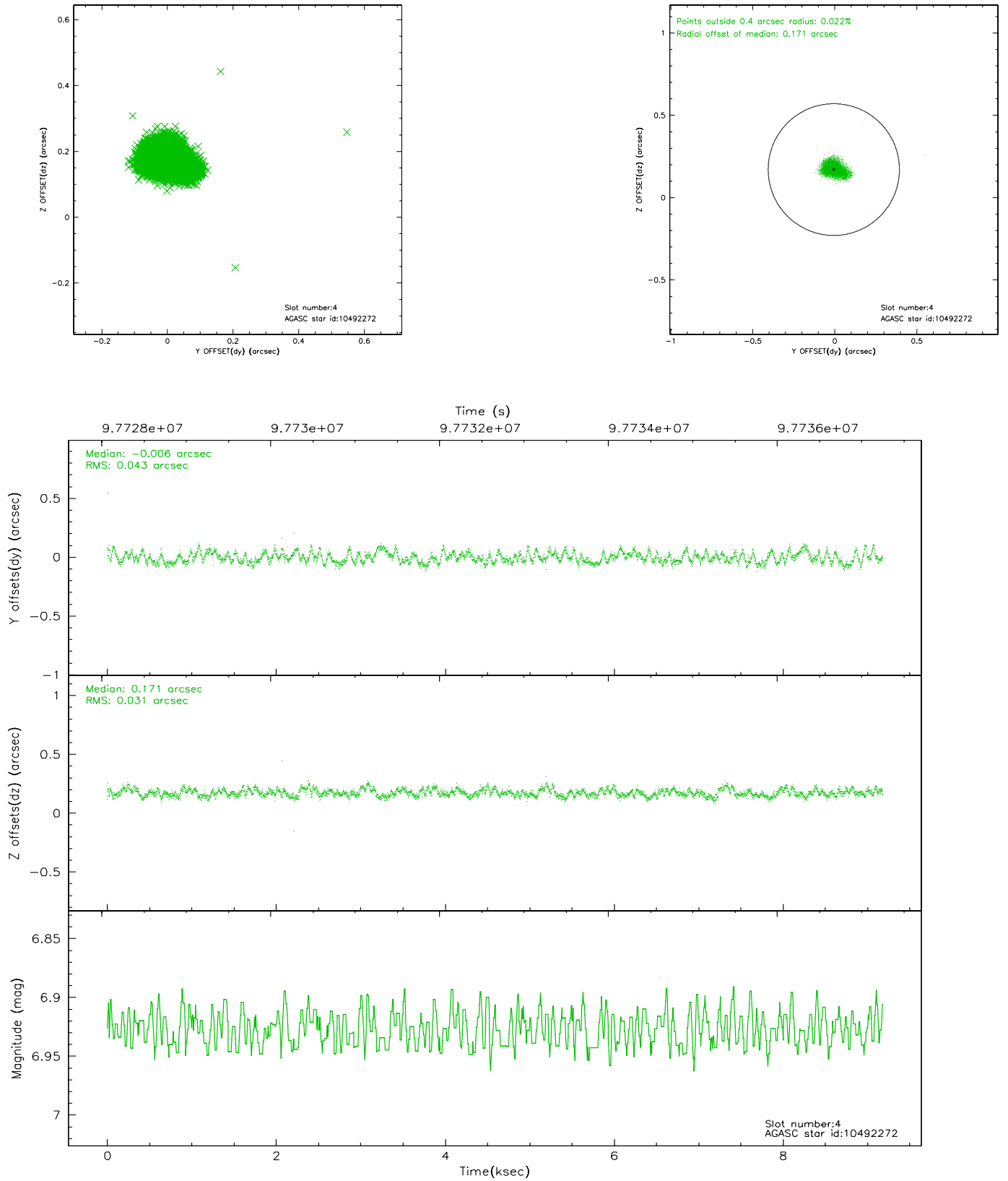
| slot | status | id | mag | n_pts | med_dy | med_dz | dr1 | dr2 | ra | dec | mean_y | mean_z |
|------|--------|----------|------|-------|--------|--------|-------|-------|-----------|----------|----------|----------|
| 0 | FID | ACIS-S-1 | 7.19 | 2241 | -0.032 | 0.030 | 0.007 | 0.012 | 0.000000 | 0.000000 | 940.98 | -1721.86 |
| 1 | FID | ACIS-S-5 | 7.24 | 2241 | 0.048 | -0.002 | 0.006 | 0.010 | 0.000000 | 0.000000 | -1807.62 | 175.04 |
| 2 | FID | ACIS-S-6 | 7.36 | 2241 | -0.038 | -0.016 | 0.008 | 0.013 | 0.000000 | 0.000000 | 405.87 | 819.67 |
| 3 | GUIDE | 10492336 | 7.03 | 4481 | -0.098 | -0.033 | 0.058 | 0.093 | 63.181049 | 5.030869 | 1773.04 | -1900.52 |
| 4 | GUIDE | 10492272 | 6.93 | 4481 | -0.006 | 0.171 | 0.056 | 0.088 | 64.297548 | 5.024571 | 2334.32 | 2063.98 |
| 5 | GUIDE | 10489120 | 8.97 | 4479 | -0.050 | -0.095 | 0.090 | 0.138 | 63.037180 | 5.195794 | 1115.59 | -2330.83 |
| 6 | GUIDE | 10493912 | 9.39 | 4477 | 0.121 | 0.088 | 0.070 | 0.115 | 63.610162 | 5.180568 | 1447.18 | -303.42 |
| 7 | GUIDE | 10493872 | 9.39 | 4475 | 0.030 | -0.131 | 0.091 | 0.150 | 63.703184 | 5.387990 | 752.12 | 127.63 |

2.4 Star Slots

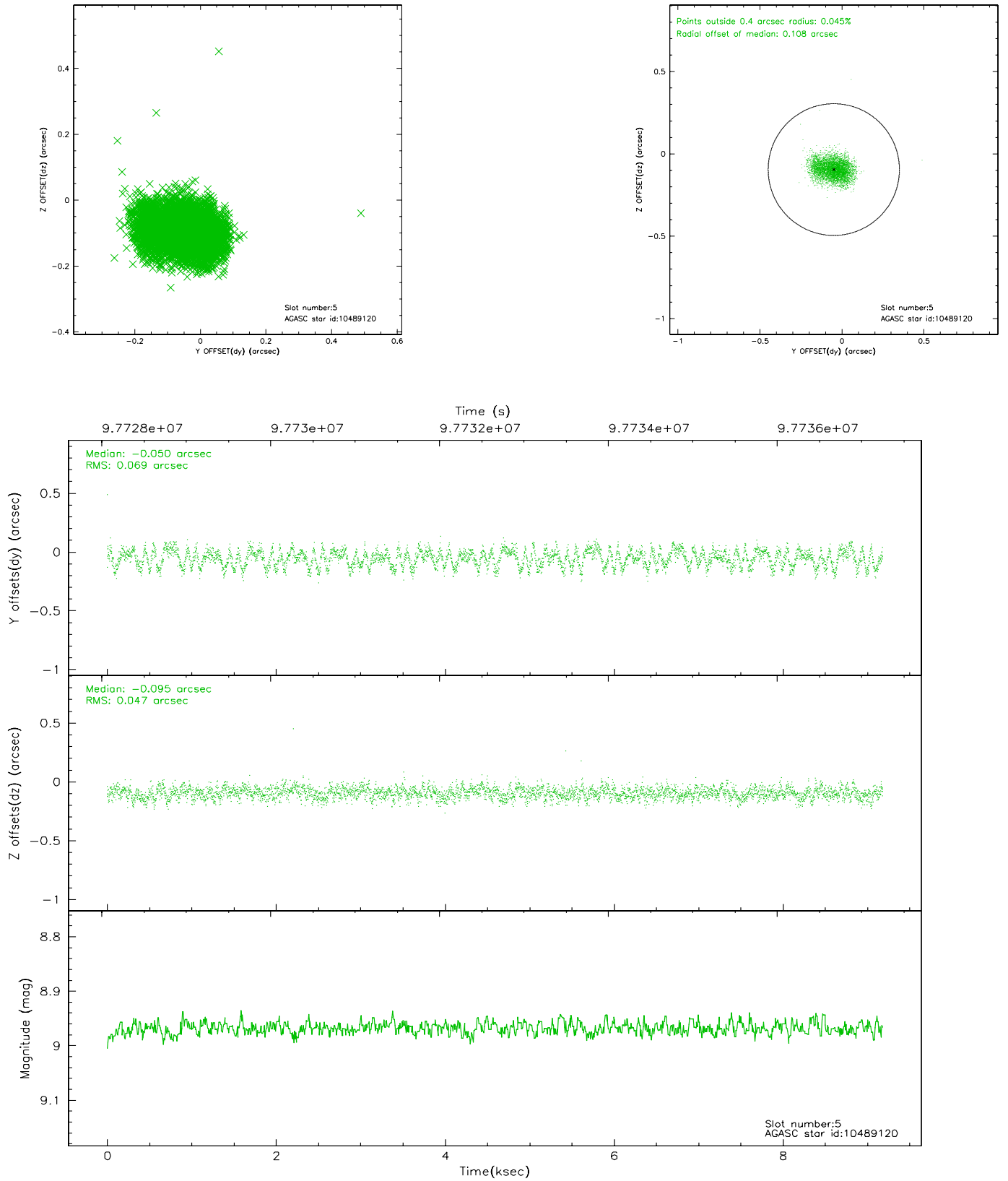
2.4.1 Slot 3



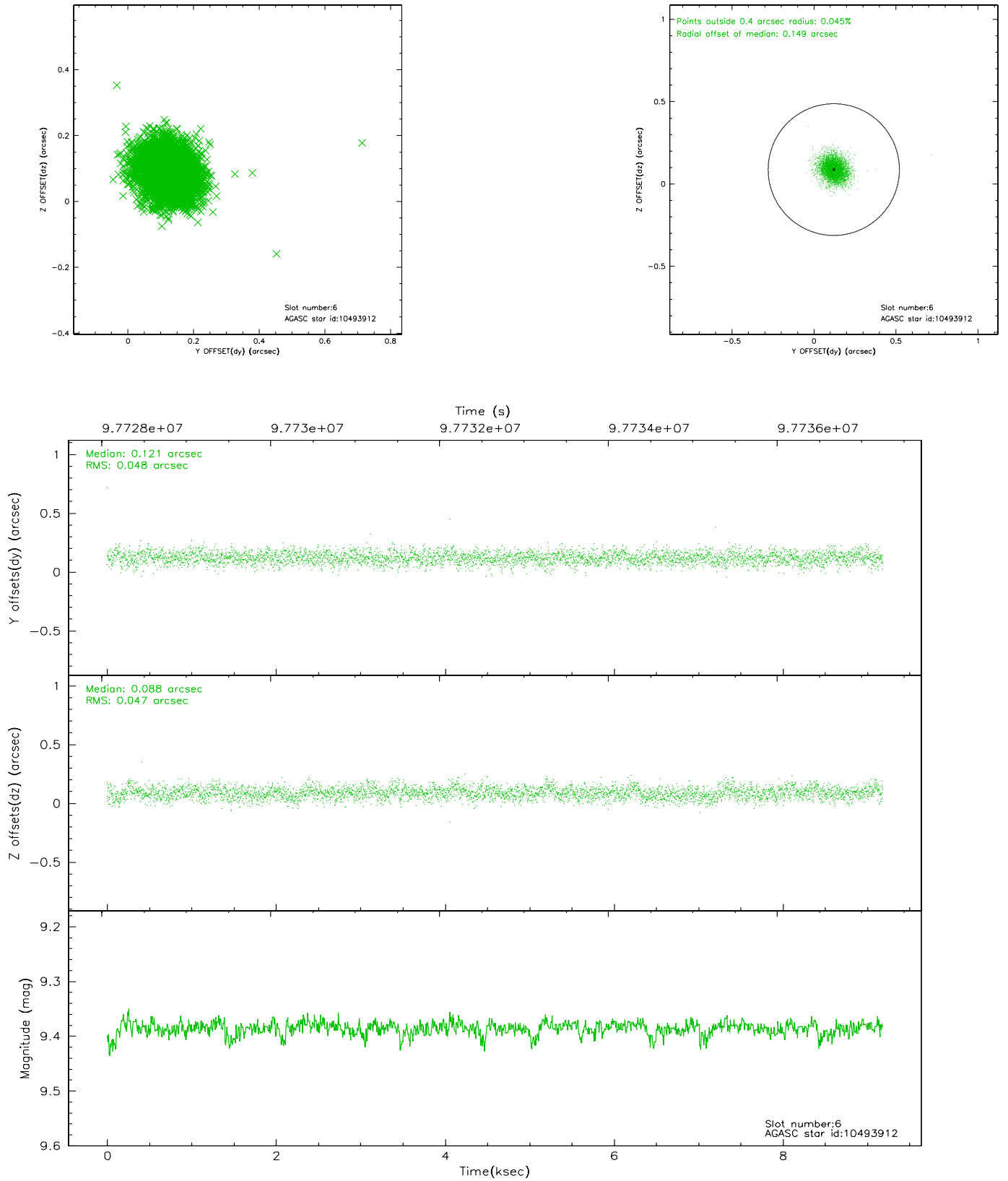
2.4.2 Slot 4



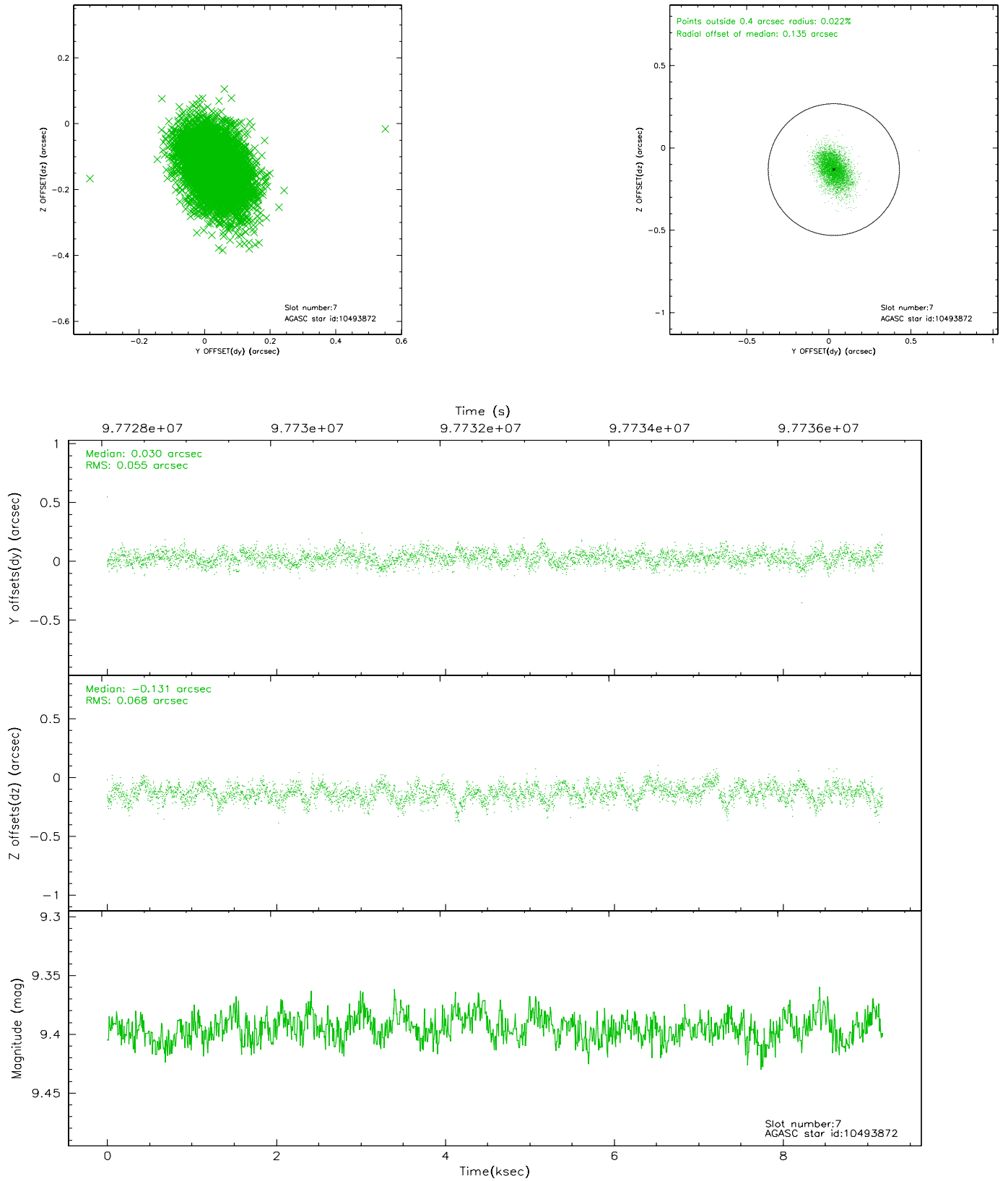
2.4.3 Slot 5



2.4.4 Slot 6

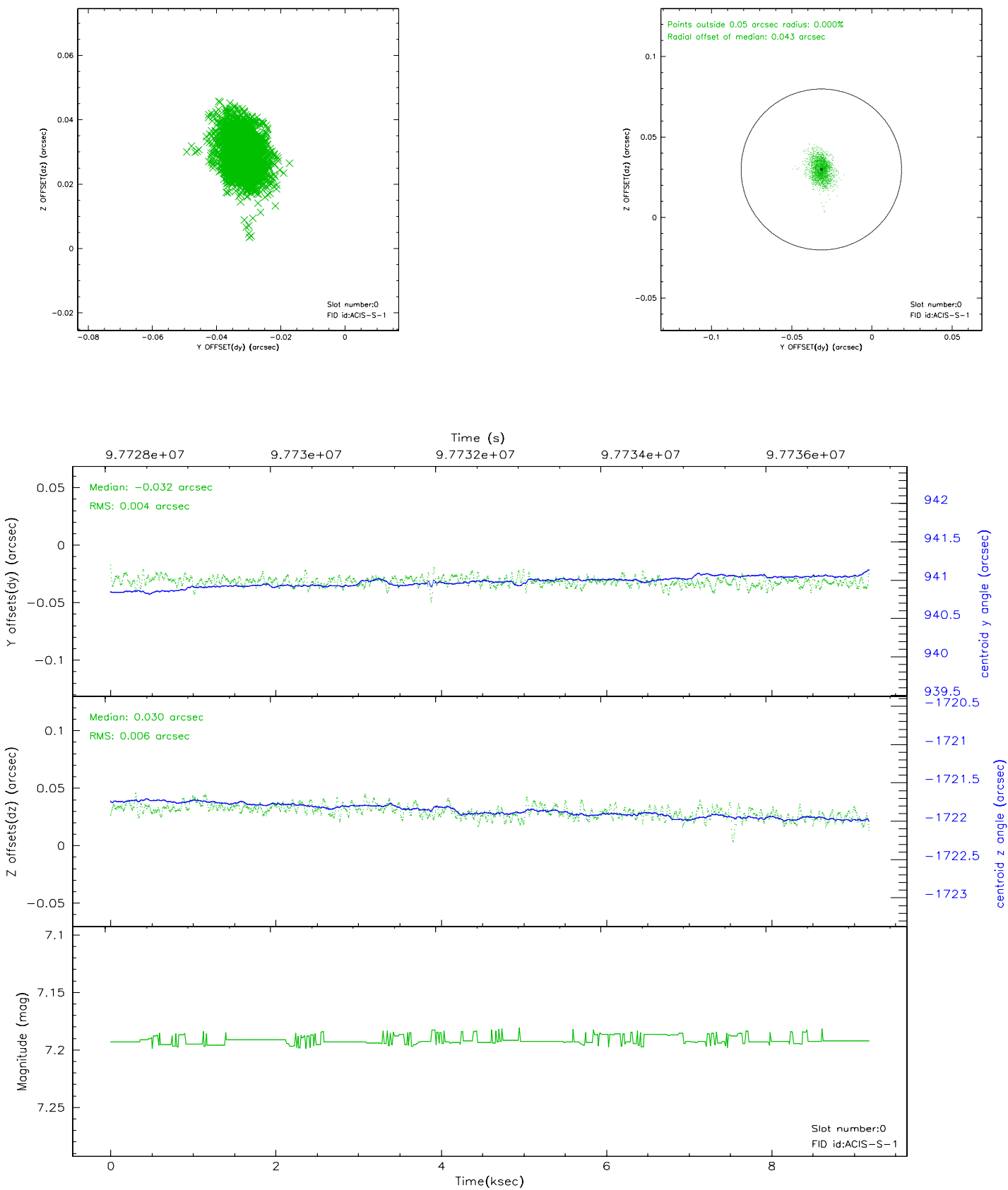


2.4.5 Slot 7

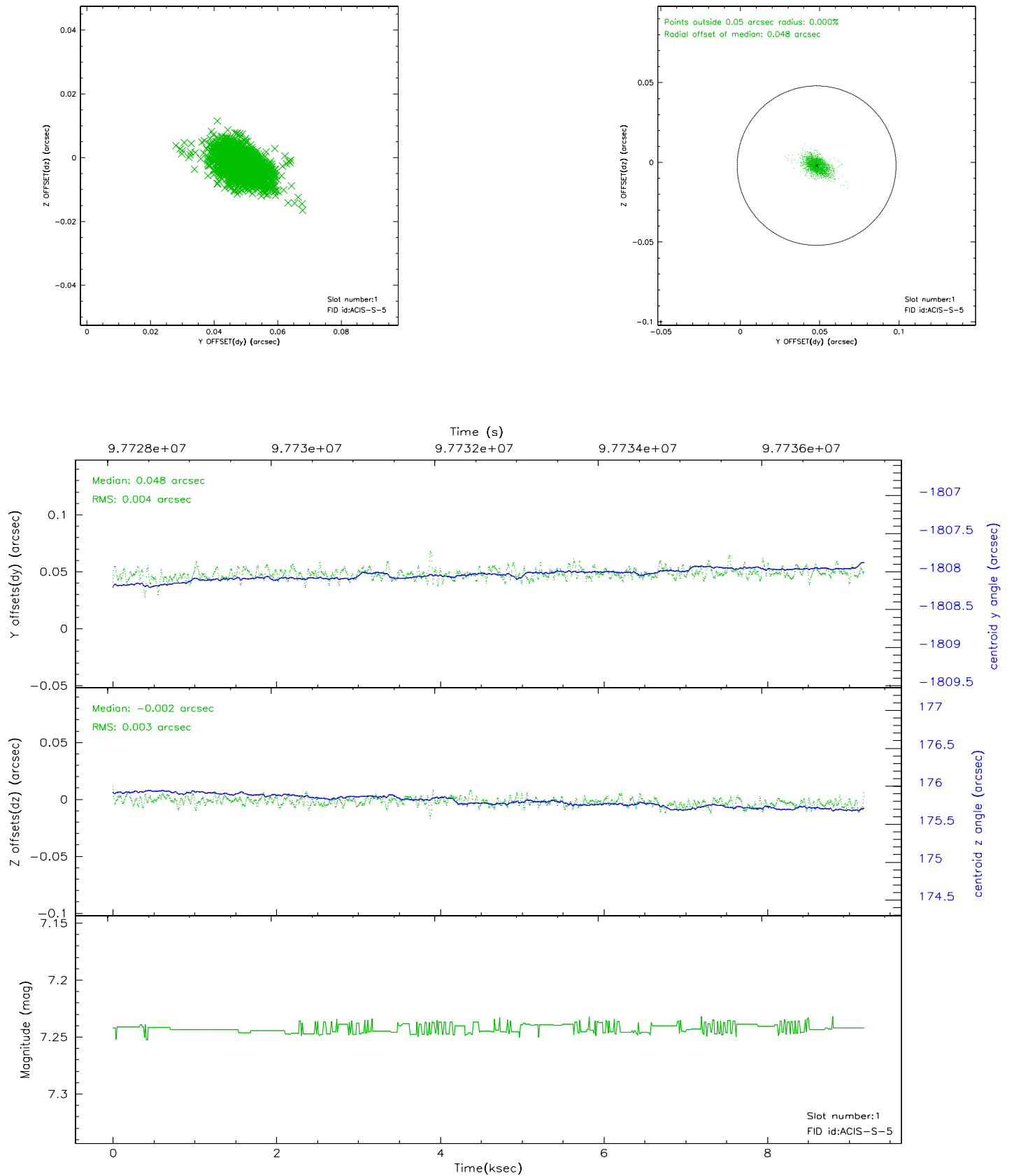


2.5 FID Slots

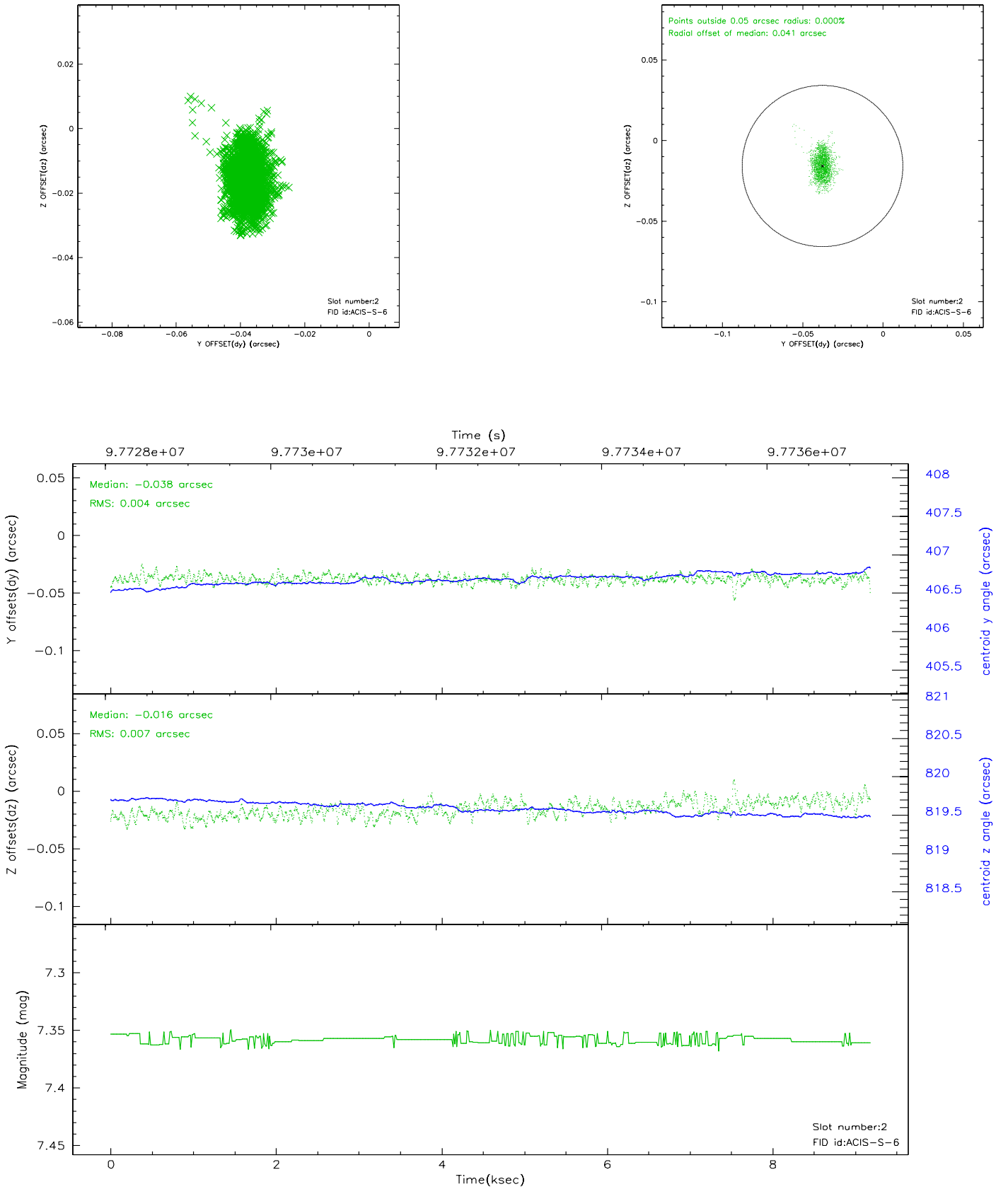
2.5.1 Slot 0



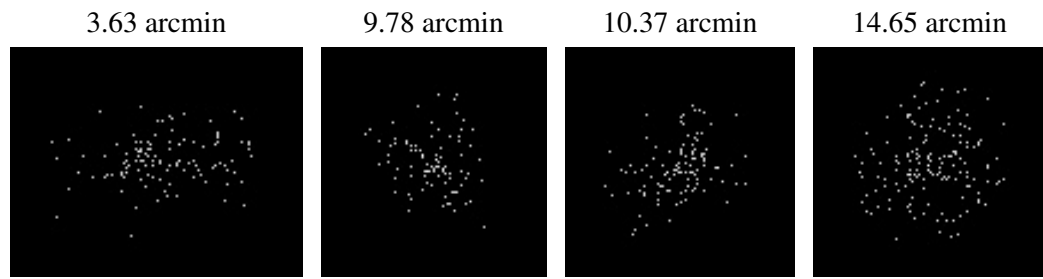
2.5.2 Slot 1



2.5.3 Slot 2



3 Point Sources



A Summary

A.1 Status

| | |
|----------------------------|---------------|
| V&V Scientist | Beth Sundheim |
| V&V Date (YYYY-MM-DD) | 2006.11.06 |
| V&V Edition | 1 |
| V&V Disposition and Status | OK |
| V&V Charge Time | 9.136 |

A.2 Comments