

V&V Reference Report

L2 ASCDS Version : 7.6.9

Observation 1595 - L2 Version 001
Chandra X-Ray Center

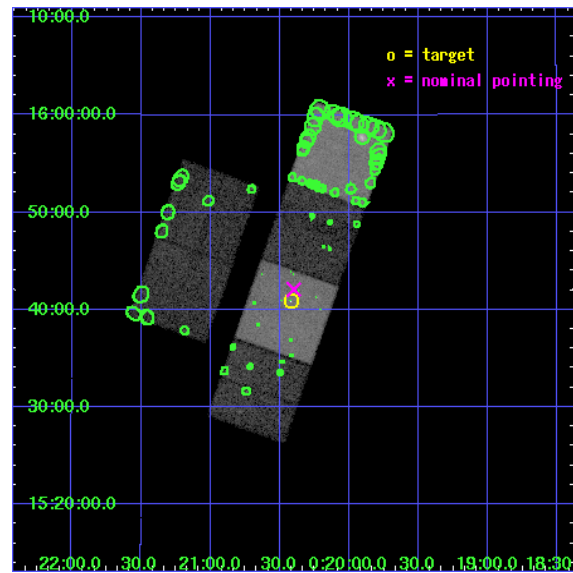
L2 Processing Date : Nov 28 2006

Contents

1	Front	2
2	OBI	3
2.1	OBI	3
2.1.1	Images	3
2.1.2	Bias	3
2.1.3	Parameters	4
2.1.4	Events	4
2.2	Compared Parameters	5
2.3	Aspect	6
2.4	Star Slots	9
2.4.1	Slot 3	9
2.4.2	Slot 4	10
2.4.3	Slot 5	11
2.4.4	Slot 6	12
2.4.5	Slot 7	13
2.5	FID Slots	14
2.5.1	Slot 0	14
2.5.2	Slot 1	15
2.5.3	Slot 2	16
3	Point Sources	17
A	Summary	18
A.1	Status	18
A.2	Comments	18

1 Front

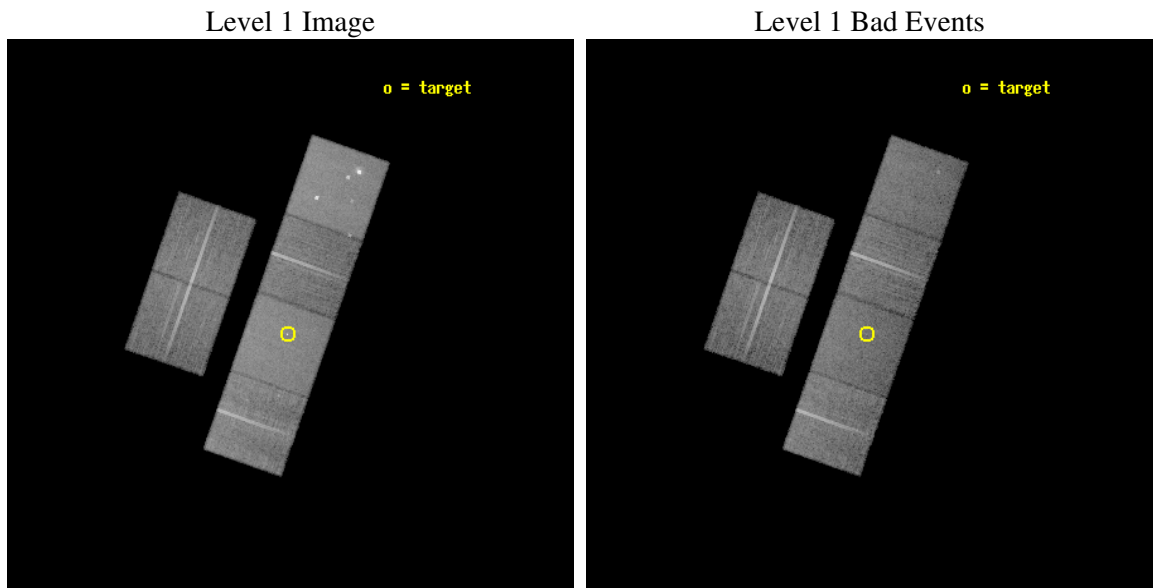
seq_num	700211
obs_id	1595
title	THE NATURE OF THE X-RAY EMISSION FROM THE RADIO QUASAR 3C9
observer	Prof Andrew Fabian
object	3C9
dtcycle	0
cycle	P
ra_targ	5.105
dec_targ	15.681389
ra_nom	5.0996227879375
dec_nom	15.701601241907
roll_nom	109.29918533601
revision	2
ontime	20137.600018755
livetime	19882.60560191
ontime2	20134.359088436
ontime3	20137.600018755
ontime5	20137.600018755
ontime6	20137.600018755
ontime7	20137.600018755
ontime8	20137.600018755
l2events	214195



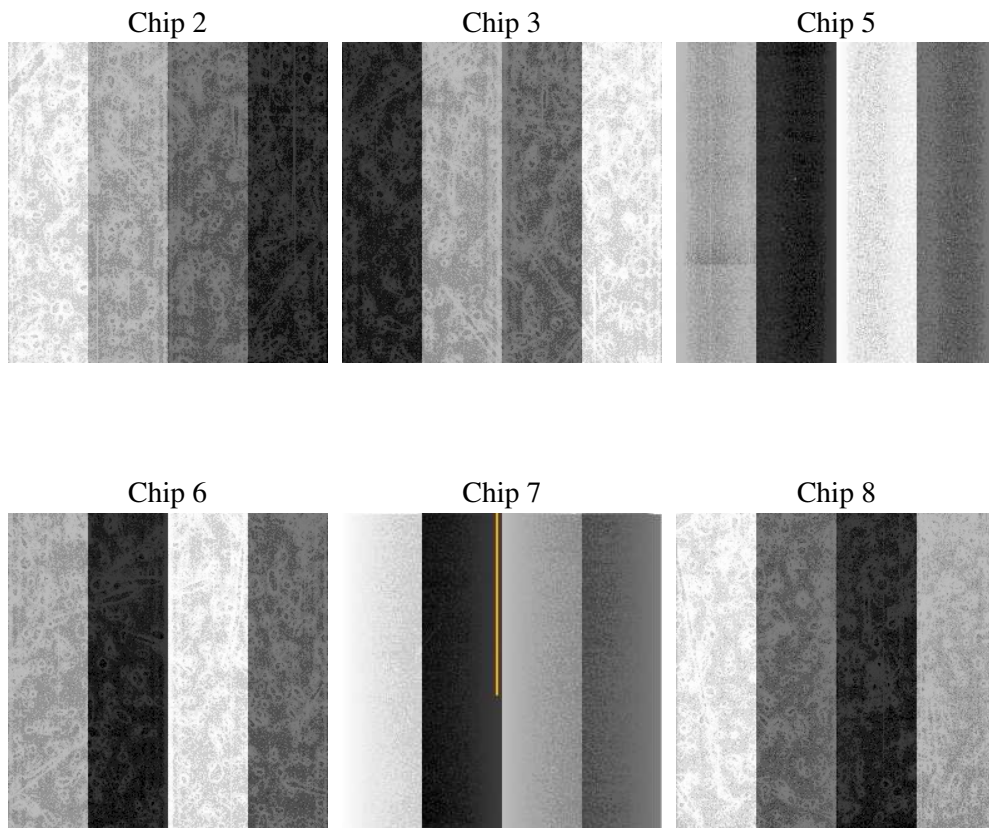
2 OBI

2.1 OBI

2.1.1 Images



2.1.2 Bias



2.1.3 Parameters

obi_num	0
ascdsver	7.6.9
caldsver	3.2.4
date	2006-11-28T05:20:32
revision	2

sched_exp_time	20000.000000
ontime	20398.840755105
ontime2	20395.599794865
ontime3	20398.840725183
ontime5	20398.840755105
ontime6	20398.840725183
ontime7	20398.840755105
ontime8	20398.840725183
l1events	942743

2.1.4 Events

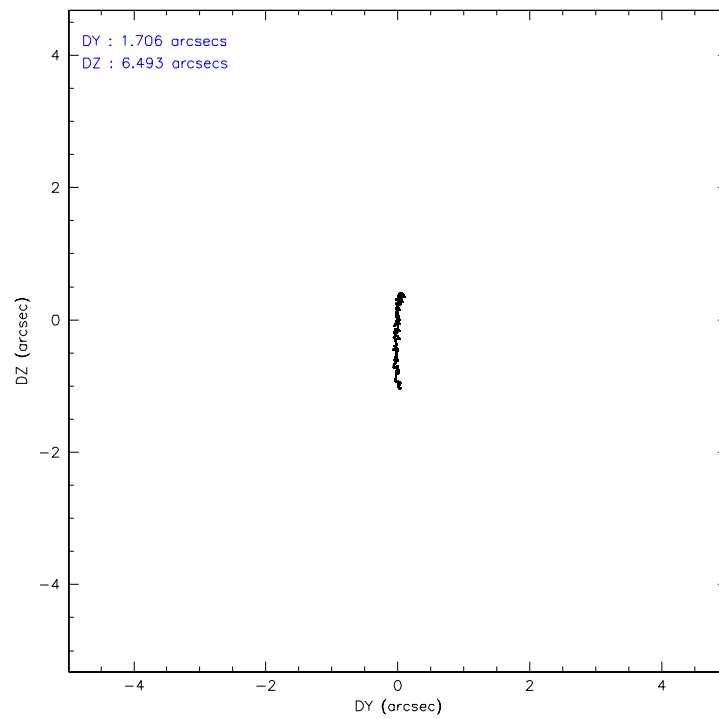
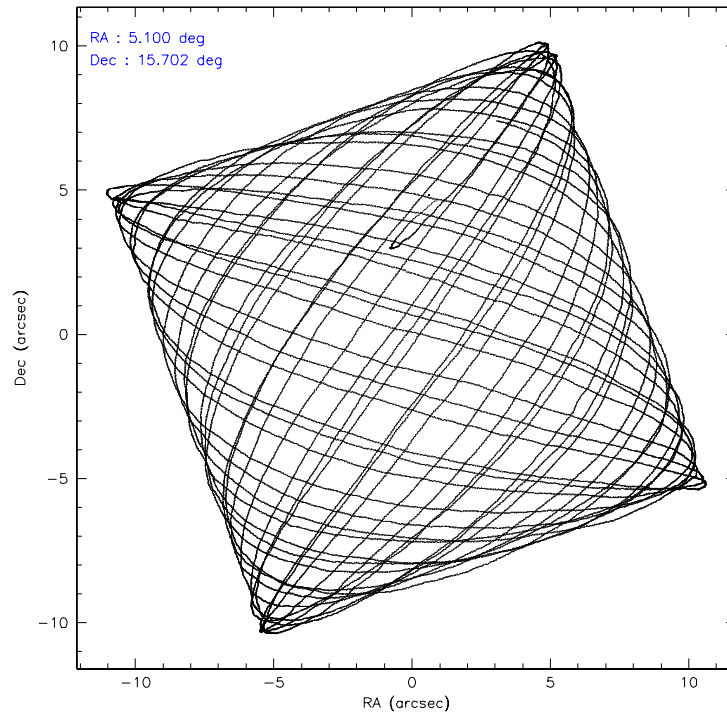
	ccd 2	ccd 3	ccd 5	ccd 6	ccd 7	ccd 8
level 1 events	134124	127045	202694	132694	180270	165916
rejected events	119053	112462	104940	116691	105655	131627
rejected %	88%	88%	51%	87%	58%	79%

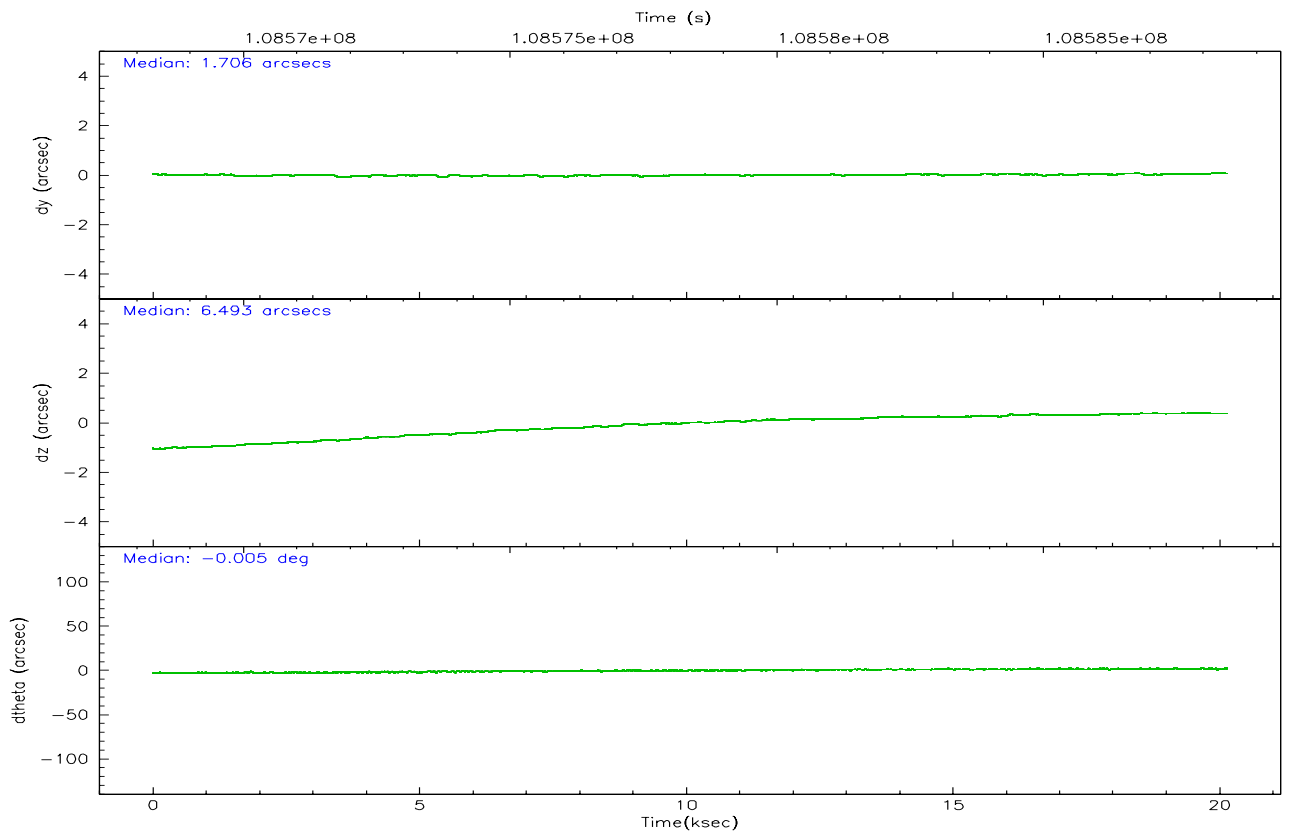
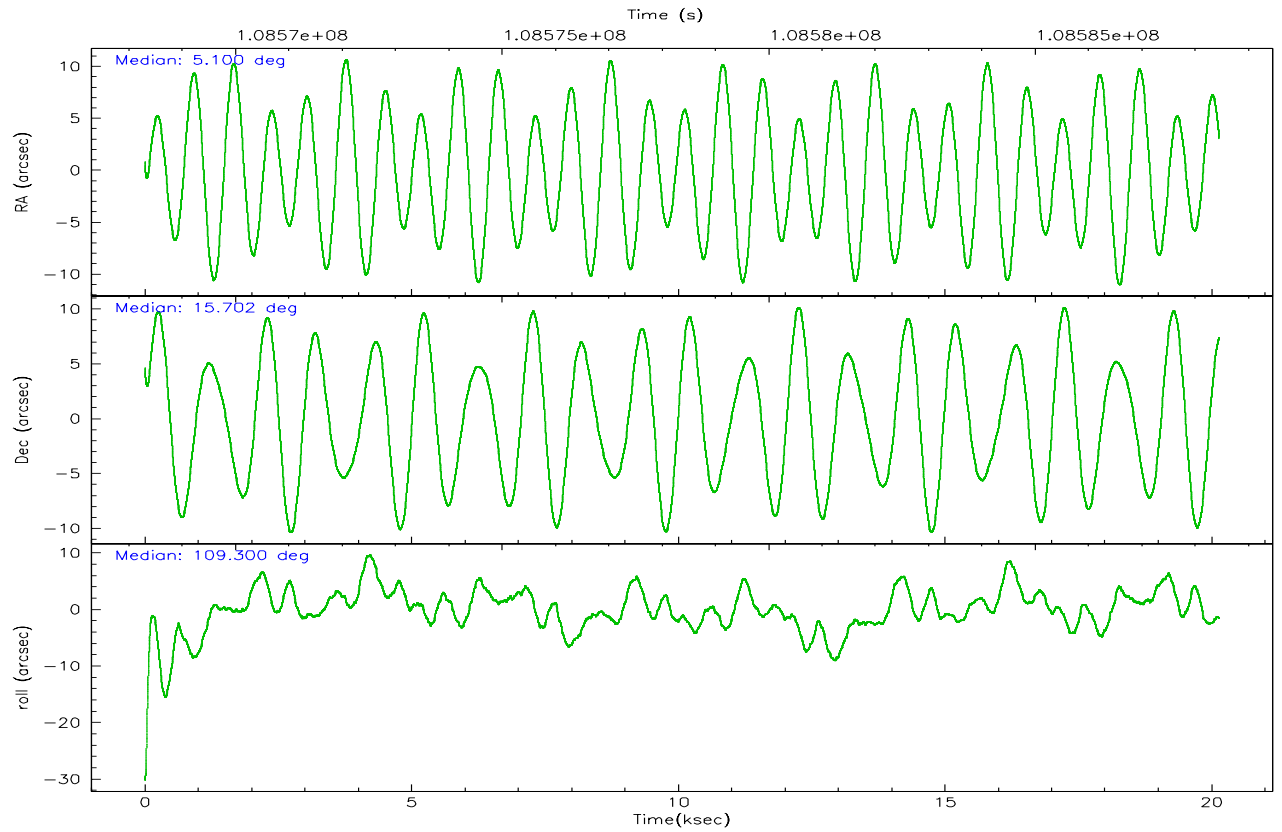
	ccd 2	ccd 3	ccd 5	ccd 6	ccd 7	ccd 8
grade 0 events	6583	6436	14241	7281	5328	11491
	4%	5%	7%	5%	2%	6%
grade 1 events	58	62	426	66	110	80
	0%	0%	0%	0%	0%	0%
grade 2 events	3325	2881	29648	3116	17754	7585
	2%	2%	14%	2%	9%	4%
grade 3 events	1379	1481	2497	1483	4260	3429
	1%	1%	1%	1%	2%	2%
grade 4 events	1385	1360	2513	1518	3964	3110
	1%	1%	1%	1%	2%	1%
grade 5 events	4545	5046	9115	5548	11591	6929
	3%	3%	4%	4%	6%	4%
grade 6 events	2654	2671	50299	2856	44417	9153
	1%	2%	24%	2%	24%	5%
grade 7 events	114195	107108	93955	110826	92846	124139
	85%	84%	46%	83%	51%	74%

2.2 Compared Parameters

Parameter	Planned	Actual	Parameter	Planned	Actual
Instrument	ACIS	ACIS	Obspar format version number	6	6
Detector	ACIS-235678	ACIS-235678	Obspar file type	PREDICTED	ACTUAL
Grating	NONE	NONE	Obspar update status	NONE	UPDATED
Data mode	FAINT	FAINT	Number of optional ACIS chips dropped	0	0
Observation mode	POINTING	POINTING	On-chip summing requested	N	N
Pointing RA	5.121285	5.09962278793749	Subarray requested	NONE	NONE
Pointing Dec	15.684011	15.70160124190699	Alternating exposures requested	N	N
Pointing Roll	109.136718	109.2991853360069	Primary exposure time	0.000000	3.2
SIM focus pos (mm)	-0.684267	-0.6828225247311905			
SIM defocus (mm)	0	0.001444936568705701			
SIM translation stage pos (mm)	-190.132523	-190.1400660498719			
SIM translation stage offset (mm)	0	0.00754346686406393			
Observation start time	108568446.184000	108567262.2253			
Observation start date	2001-06-10T13:53:02	2001-06-10T13:34:22			
Observation end time	108588446.184000	108588969.16365			
Observation end date	2001-06-10T19:26:22	2001-06-10T19:36:09			
Read mode	TIMED	TIMED			

2.3 Aspect



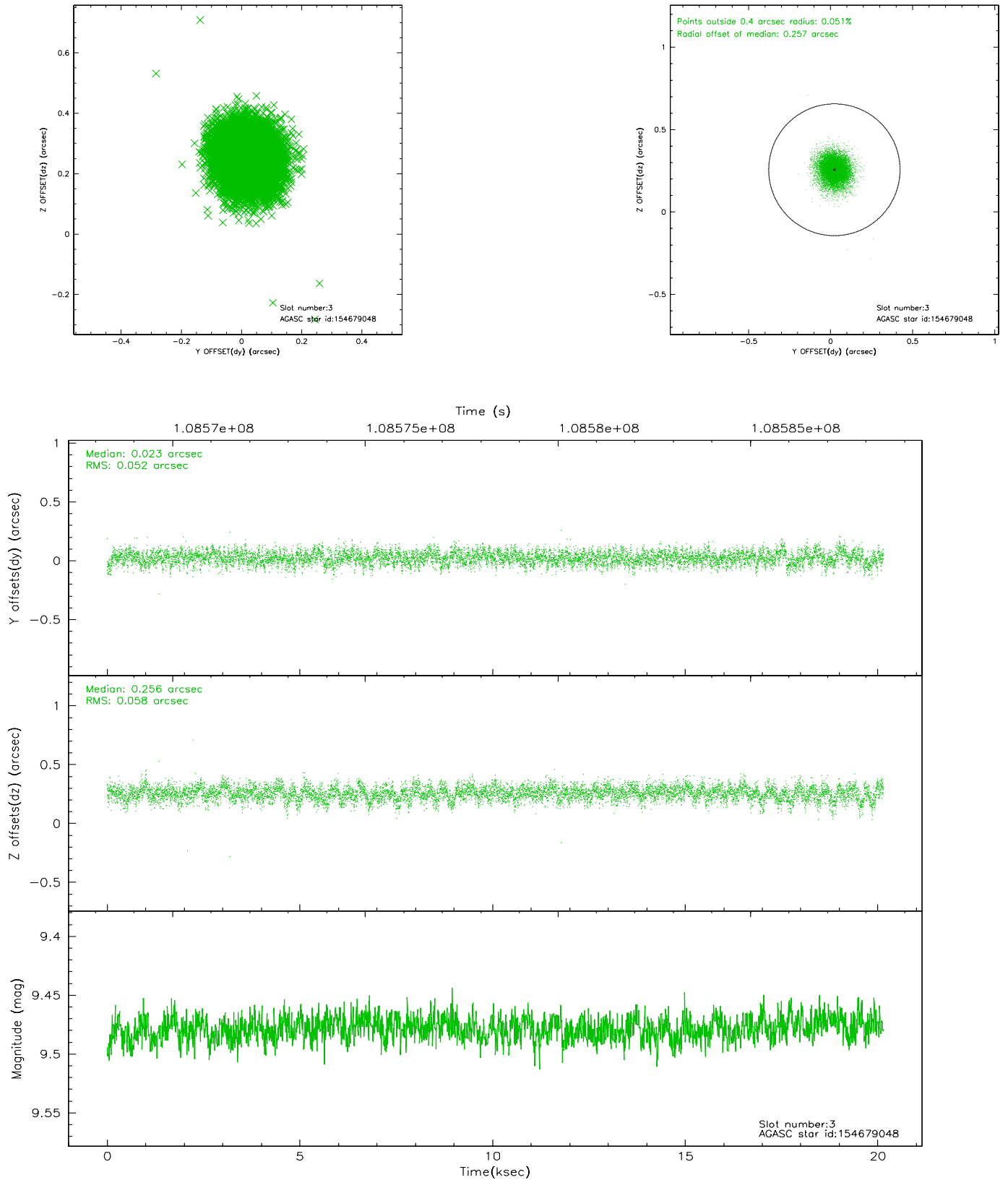


Slot Statistics

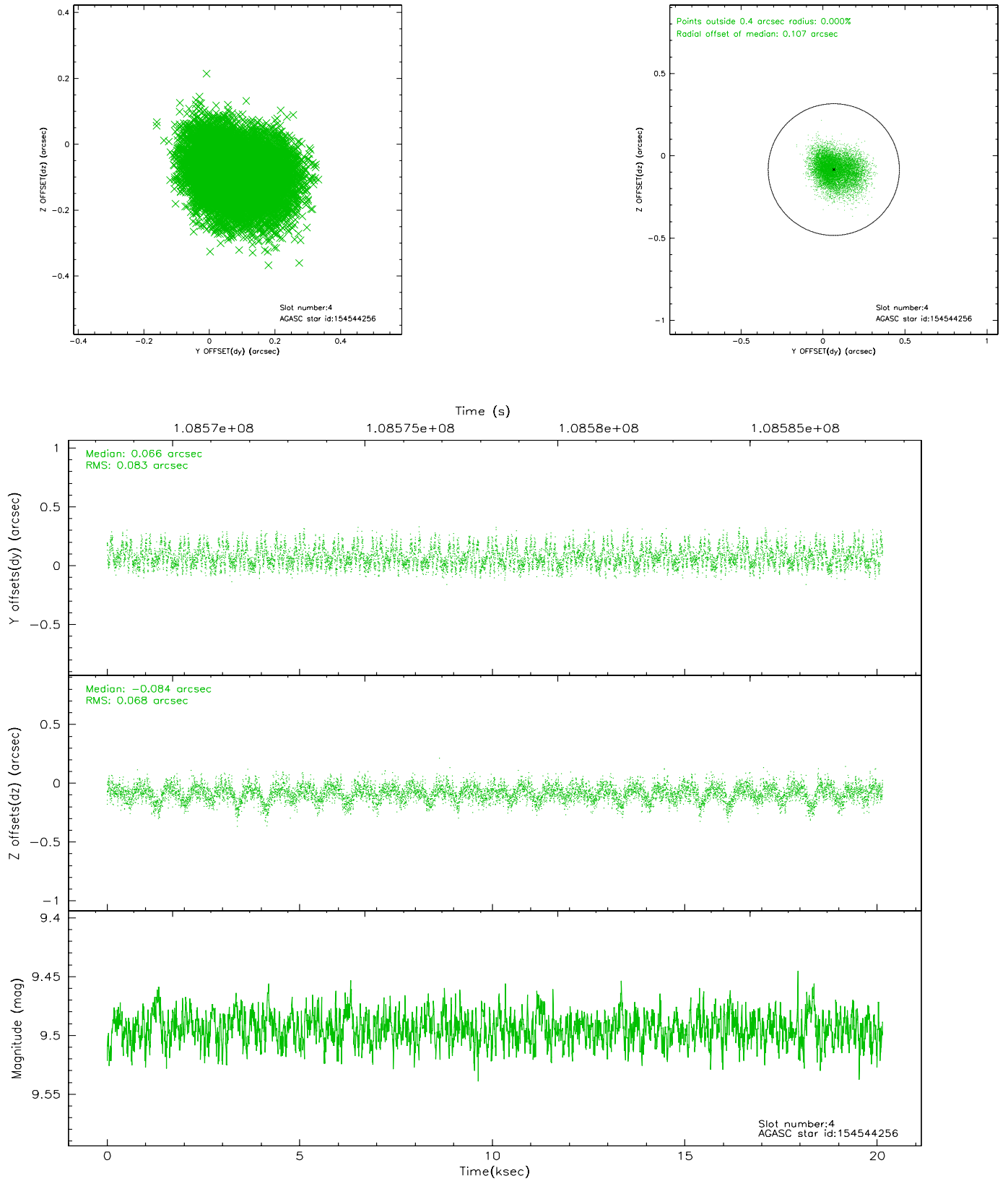
slot	status	id	mag	n_pts	med_dy	med_dz	dr1	dr2	ra	dec	mean_y	mean_z
0	FID	ACIS-S-2	7.11	4912	-0.022	0.030	0.011	0.016	0.000000	0.000000	-754.31	-1727.49
1	FID	ACIS-S-4	7.20	4912	-0.088	0.003	0.009	0.016	0.000000	0.000000	2158.79	180.81
2	FID	ACIS-S-5	7.23	4912	0.078	-0.024	0.009	0.013	0.000000	0.000000	-1806.84	174.62
3	GUIDE	154679048	9.48	9821	0.023	0.256	0.082	0.134	5.608057	15.405015	-1500.05	-1265.94
4	GUIDE	154544256	9.49	9822	0.066	-0.084	0.114	0.184	4.761635	15.035728	-1793.22	1947.10
5	GUIDE	154546464	9.87	9825	-0.216	-0.133	0.142	0.229	4.529635	15.666511	615.96	1958.52
6	GUIDE	154545128	9.94	9812	0.016	-0.080	0.134	0.213	5.142115	15.324051	-1247.02	357.87
7	GUIDE	154547856	9.64	9822	0.113	0.043	0.101	0.167	5.263070	15.147472	-1985.36	169.01

2.4 Star Slots

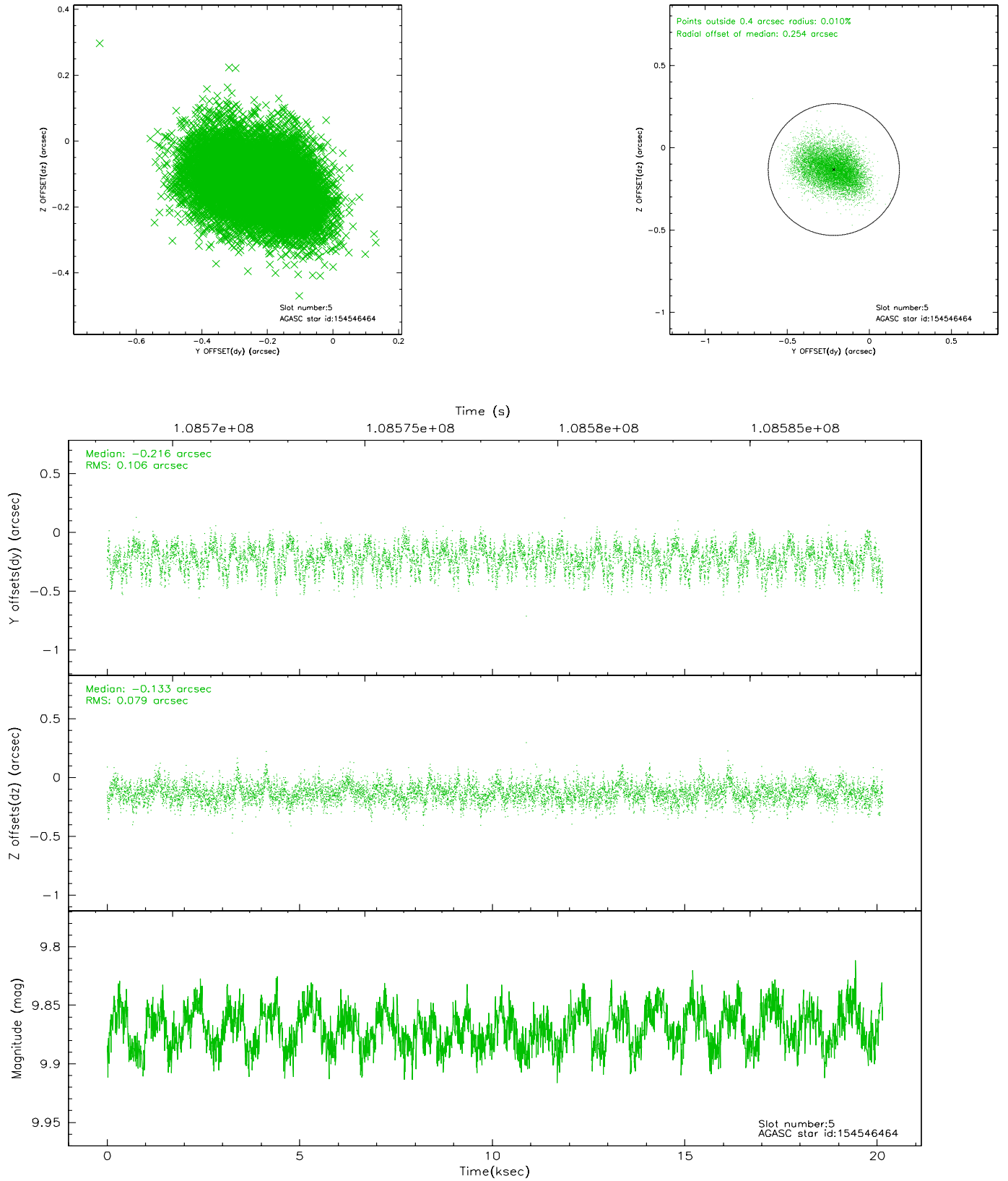
2.4.1 Slot 3



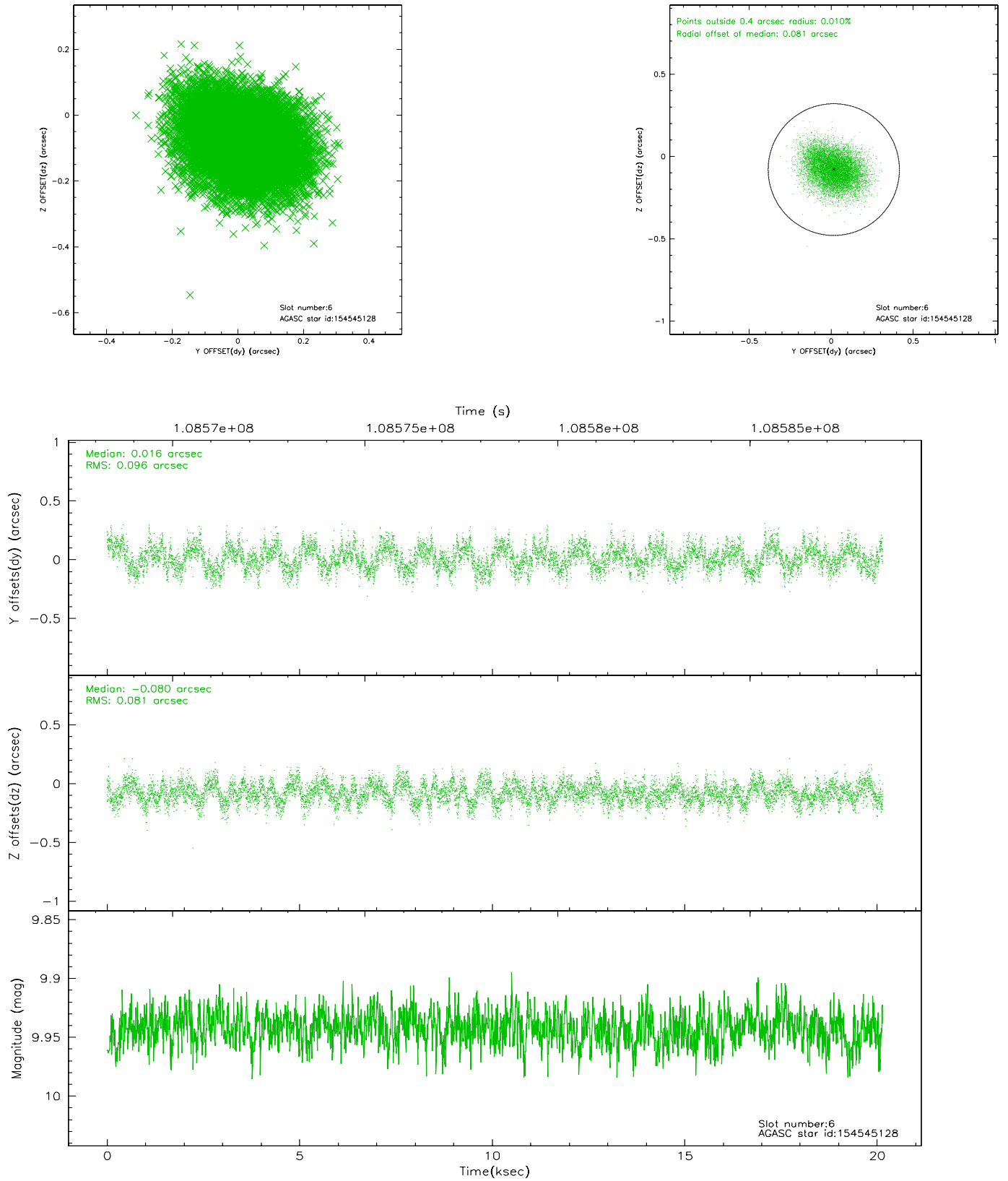
2.4.2 Slot 4



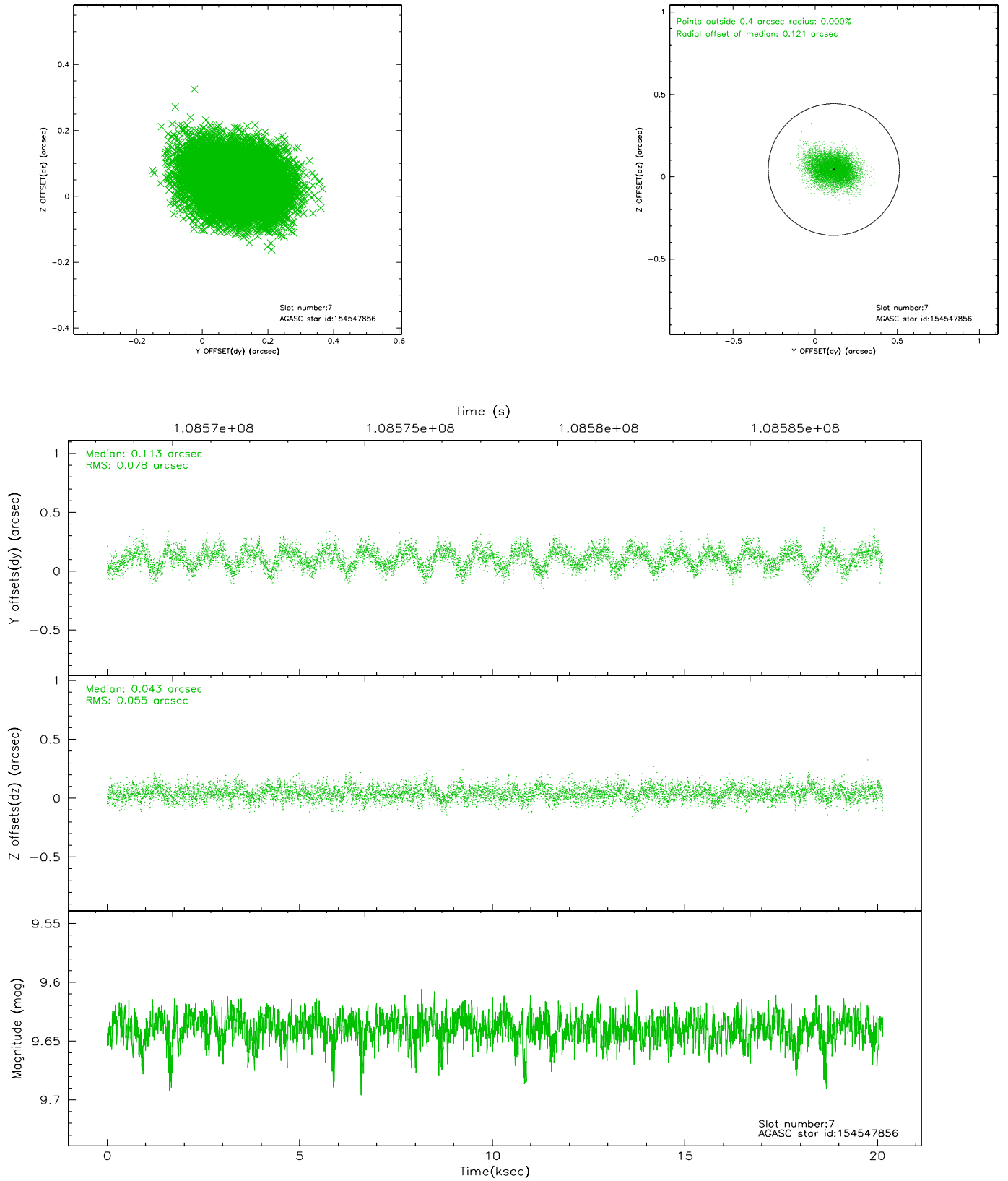
2.4.3 Slot 5



2.4.4 Slot 6

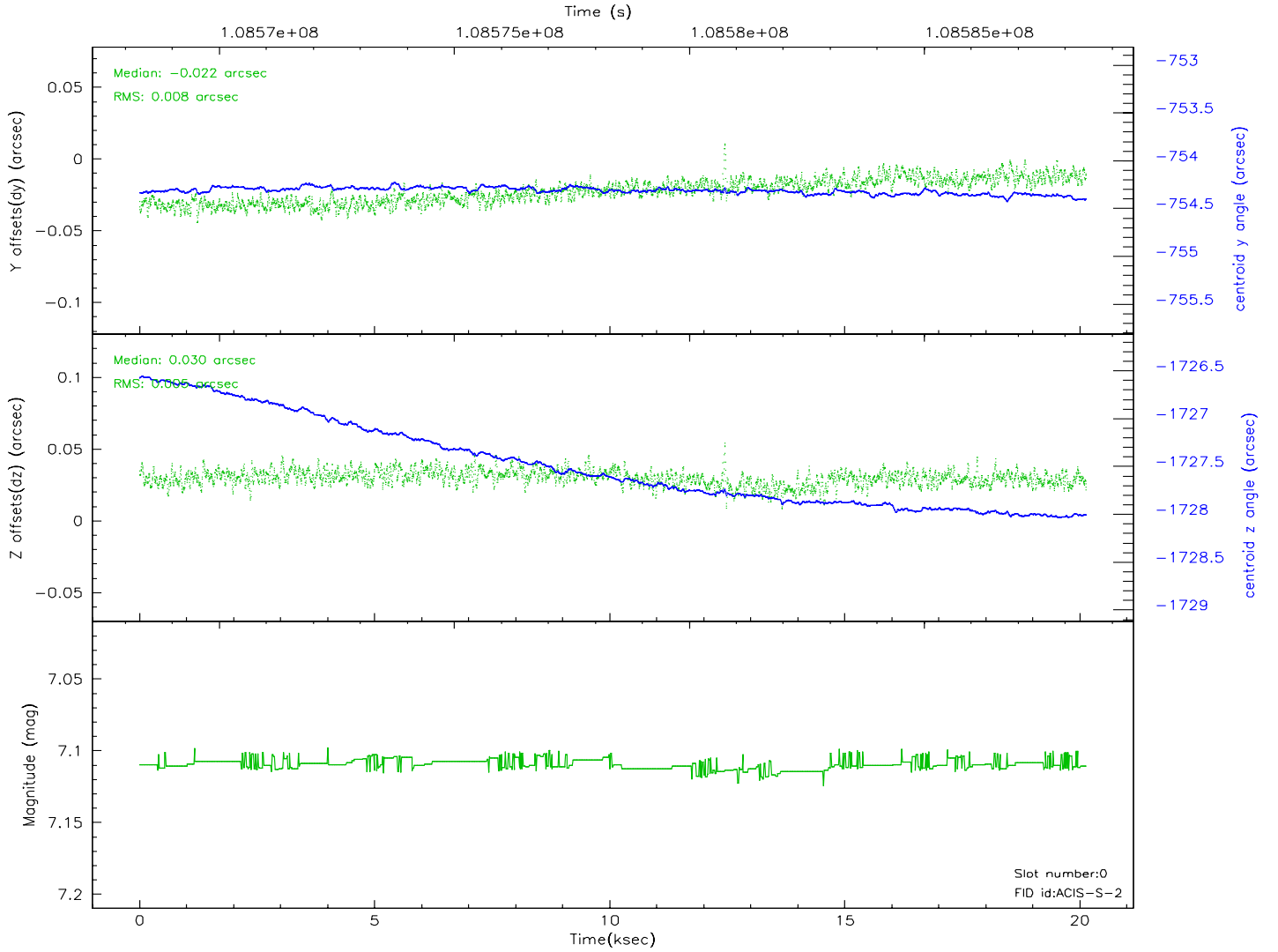
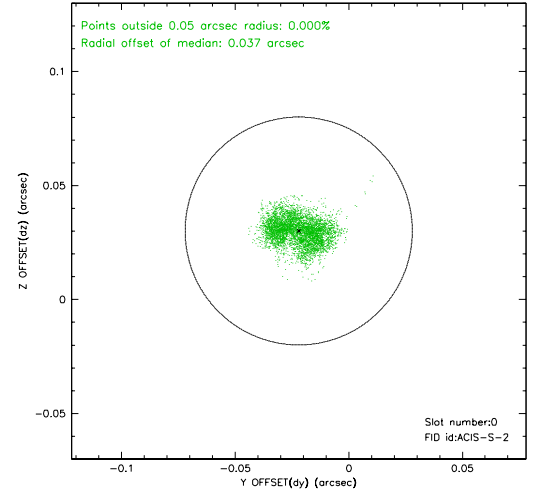
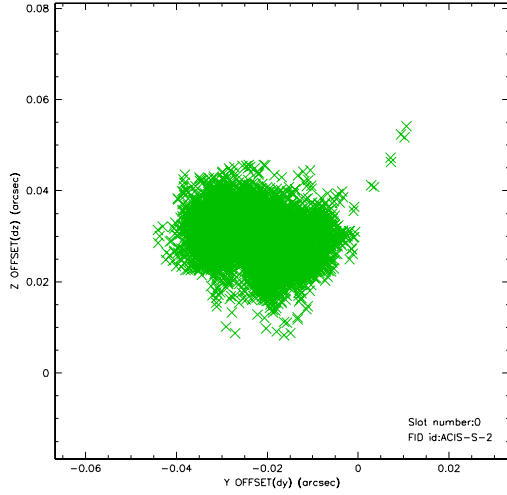


2.4.5 Slot 7

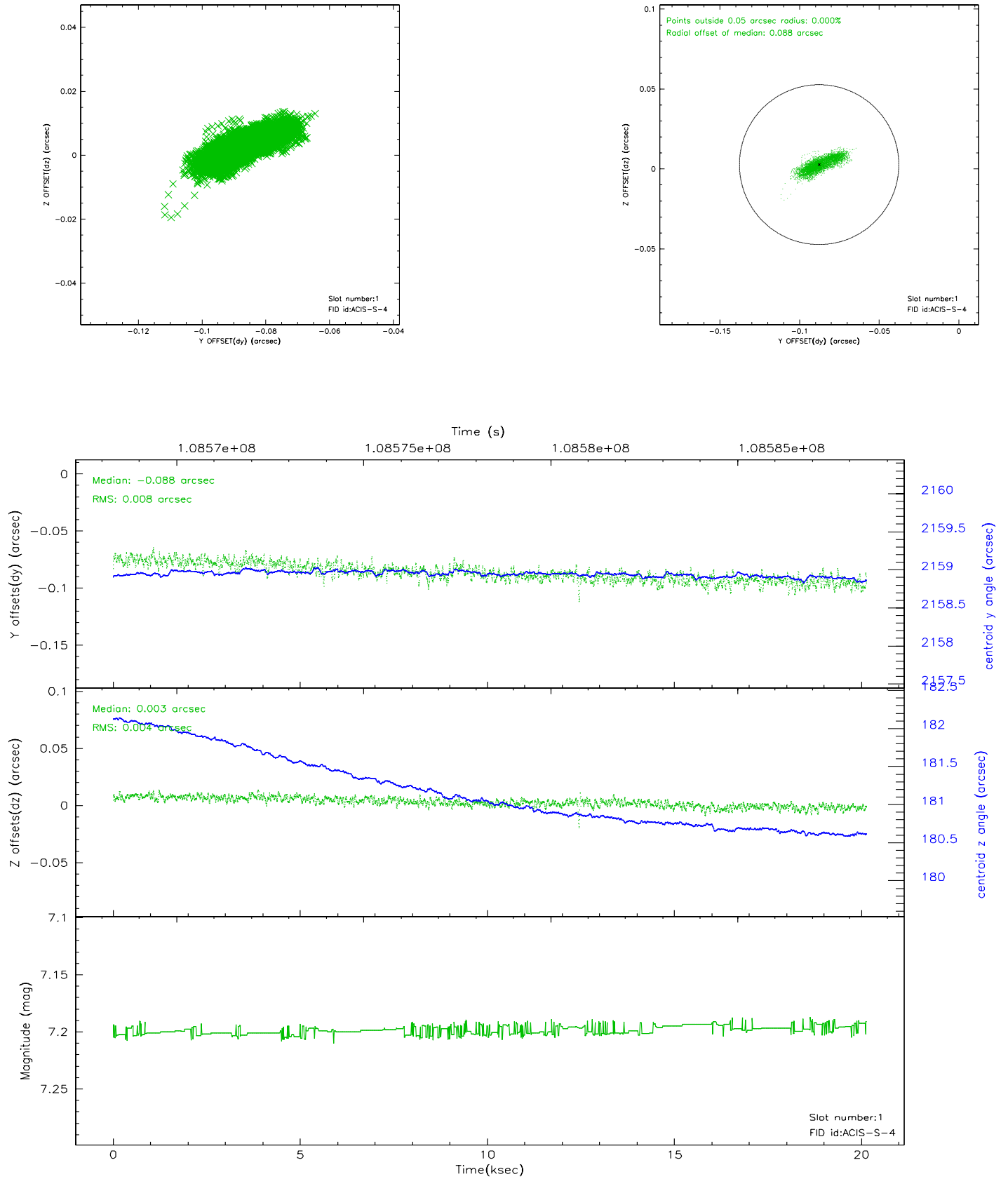


2.5 FID Slots

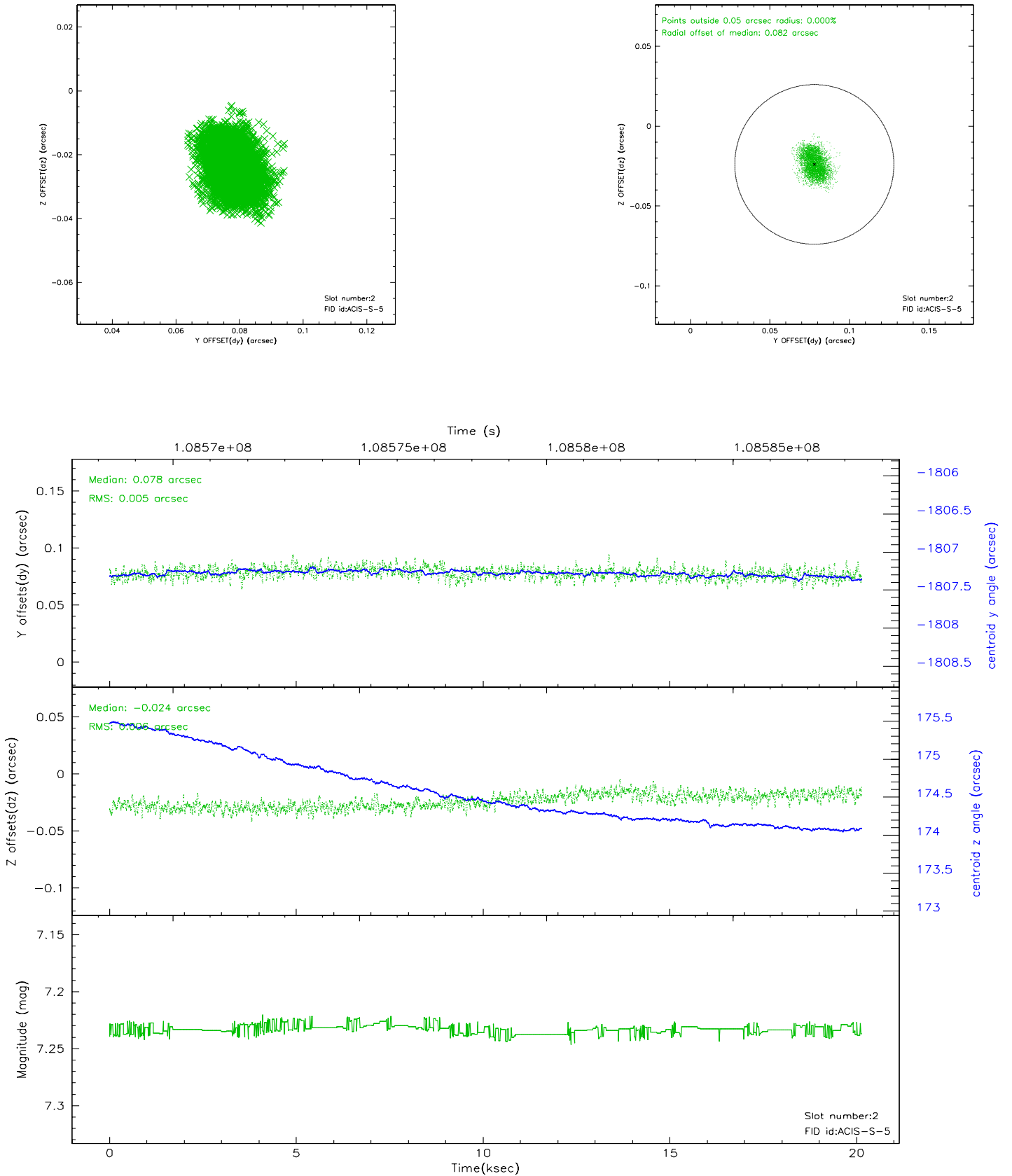
2.5.1 Slot 0



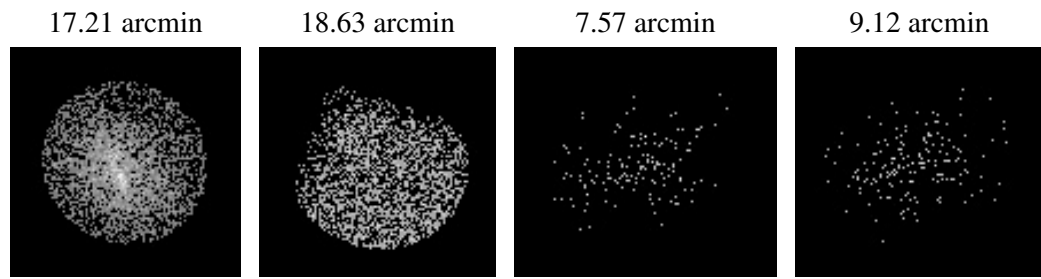
2.5.2 Slot 1



2.5.3 Slot 2



3 Point Sources



A Summary

A.1 Status

V&V Scientist	Beth Sundheim
V&V Date (YYYY-MM-DD)	2006.11.28
V&V Edition	1
V&V Disposition and Status	OK
V&V Charge Time	20.1

A.2 Comments