

V&V Reference Report

L2 ASCDS Version : 7.6.9

Observation 2402 - L2 Version 001
Chandra X-Ray Center

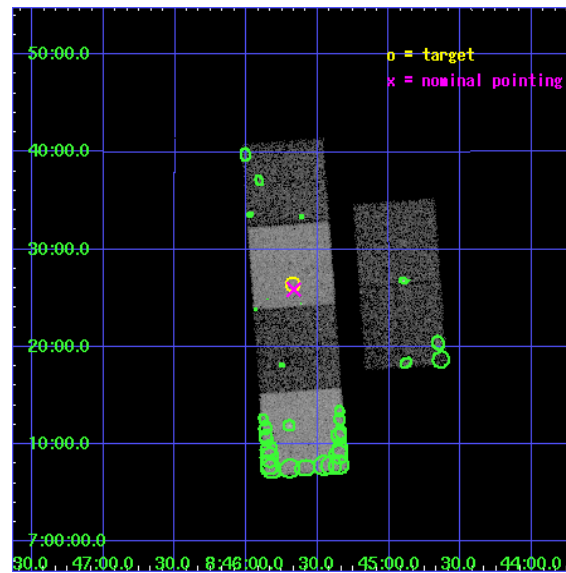
L2 Processing Date : Nov 7 2006

Contents

1	Front	2
2	OBI	3
2.1	OBI	3
2.1.1	Images	3
2.1.2	Bias	3
2.1.3	Parameters	4
2.1.4	Events	4
2.2	Compared Parameters	5
2.3	Aspect	6
2.4	Star Slots	9
2.4.1	Slot 3	9
2.4.2	Slot 4	10
2.4.3	Slot 5	11
2.4.4	Slot 6	12
2.4.5	Slot 7	13
2.5	FID Slots	14
2.5.1	Slot 0	14
2.5.2	Slot 1	15
2.5.3	Slot 2	16
3	Point Sources	17
A	Summary	18
A.1	Status	18
A.2	Comments	18

1 Front

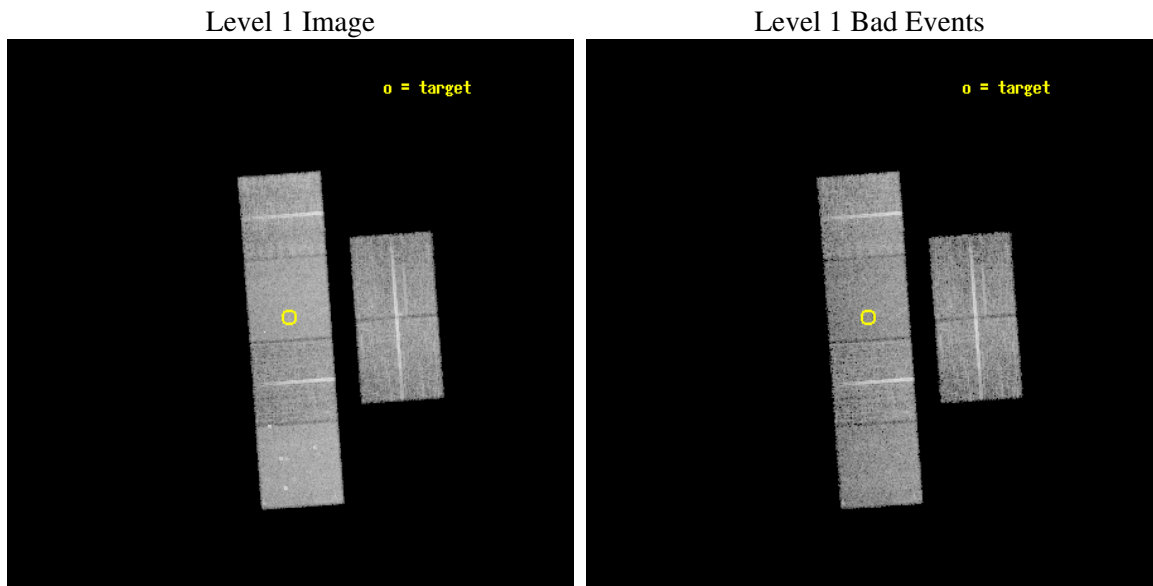
seq_num	600215
obs_id	2402
title	VERY ISOLATED ELLIPTICAL GALAXIES: MERGER REMNANTS?
observer	John Stocke
object	KI 284
dtcycle	0
cycle	P
ra_targ	131.419
dec_targ	7.441139
ra_nom	131.41660102966
dec_nom	7.4316858531617
roll_nom	265.85132539775
revision	2
ontime	9644.8000089824
livetime	9522.6717438673
ontime2	9644.8000089824
ontime3	9644.8000089824
ontime5	9644.8000089824
ontime6	9644.8000089824
ontime7	9644.8000089824
ontime8	9644.8000089824
l2events	92984



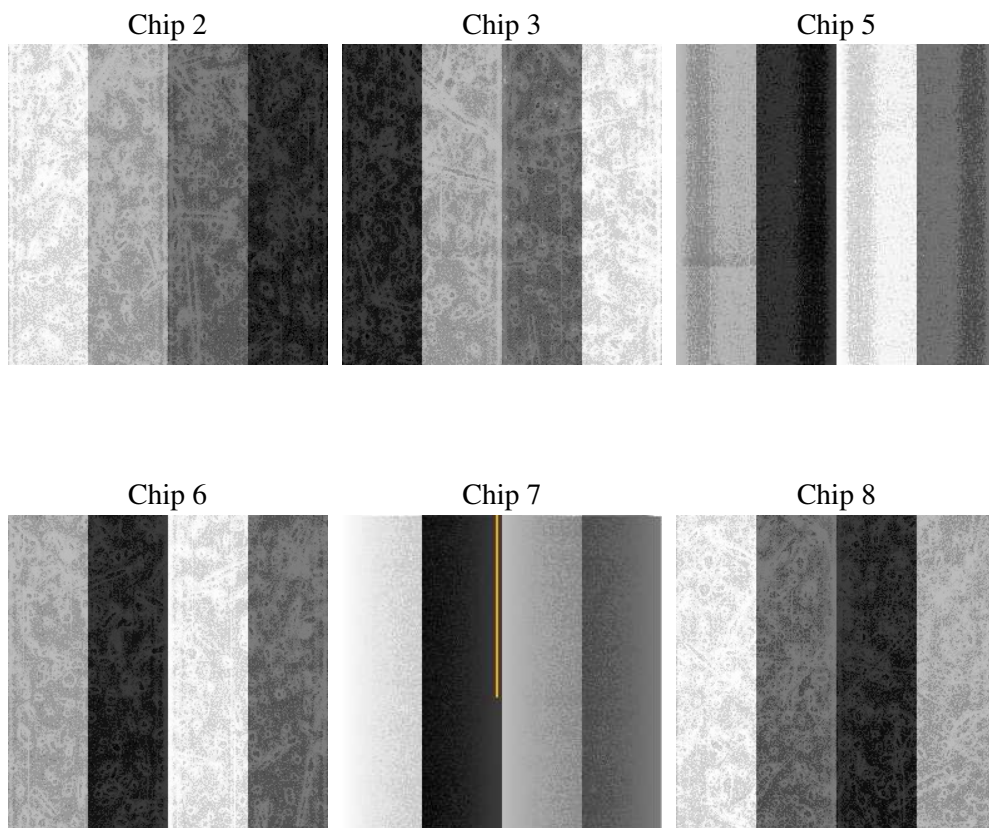
2 OBI

2.1 OBI

2.1.1 Images



2.1.2 Bias



2.1.3 Parameters

obi_num	0
ascdsver	7.6.9
caldbver	3.2.3
date	2006-11-08T01:36:03
revision	2

sched_exp_time	9500.000000
ontime	10160.548732787
ontime2	10069.799682558
ontime3	10076.284143984
ontime5	10160.548712879
ontime6	10092.489403754
ontime7	10160.548732787
ontime8	10079.525183991
l1events	467756

2.1.4 Events

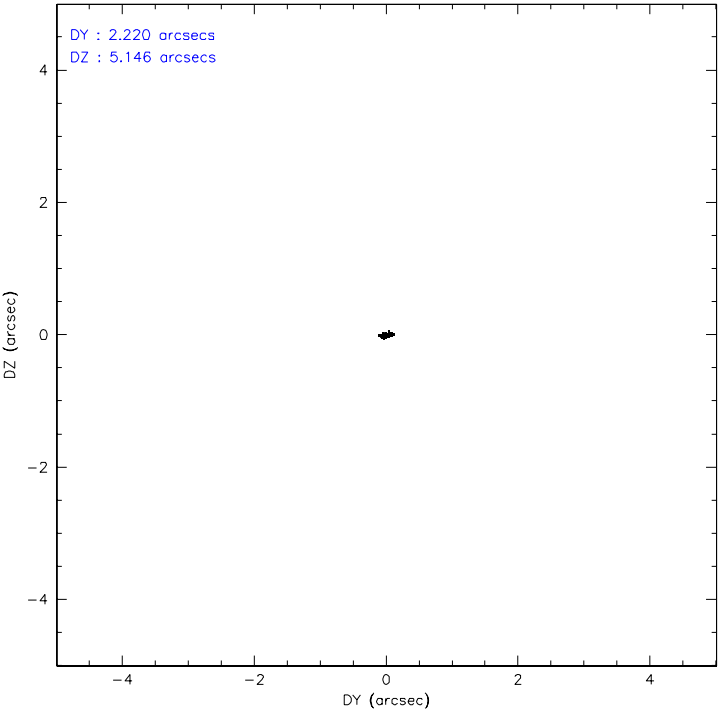
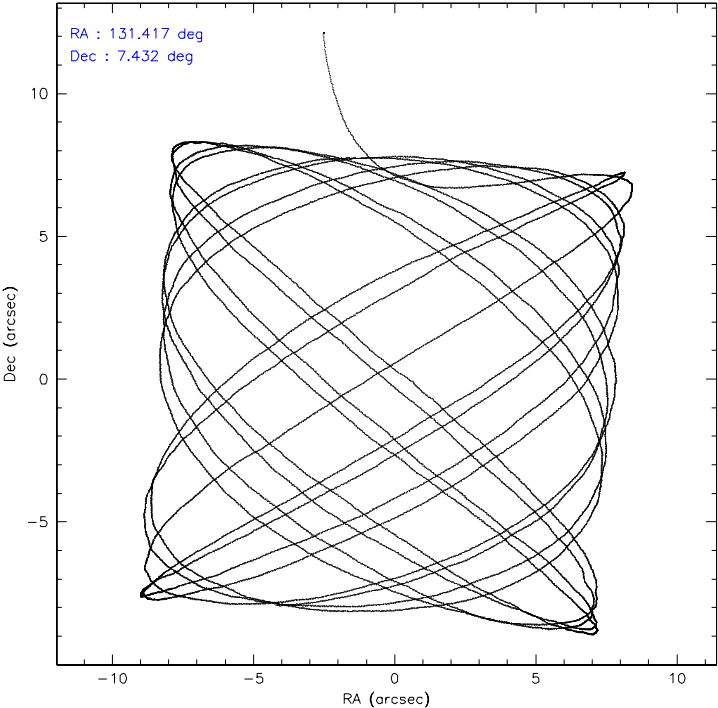
	ccd 2	ccd 3	ccd 5	ccd 6	ccd 7	ccd 8
level 1 events	68795	65178	94809	67542	85468	85964
rejected events	61859	57965	55194	60356	54254	69817
rejected %	89%	88%	58%	89%	63%	81%

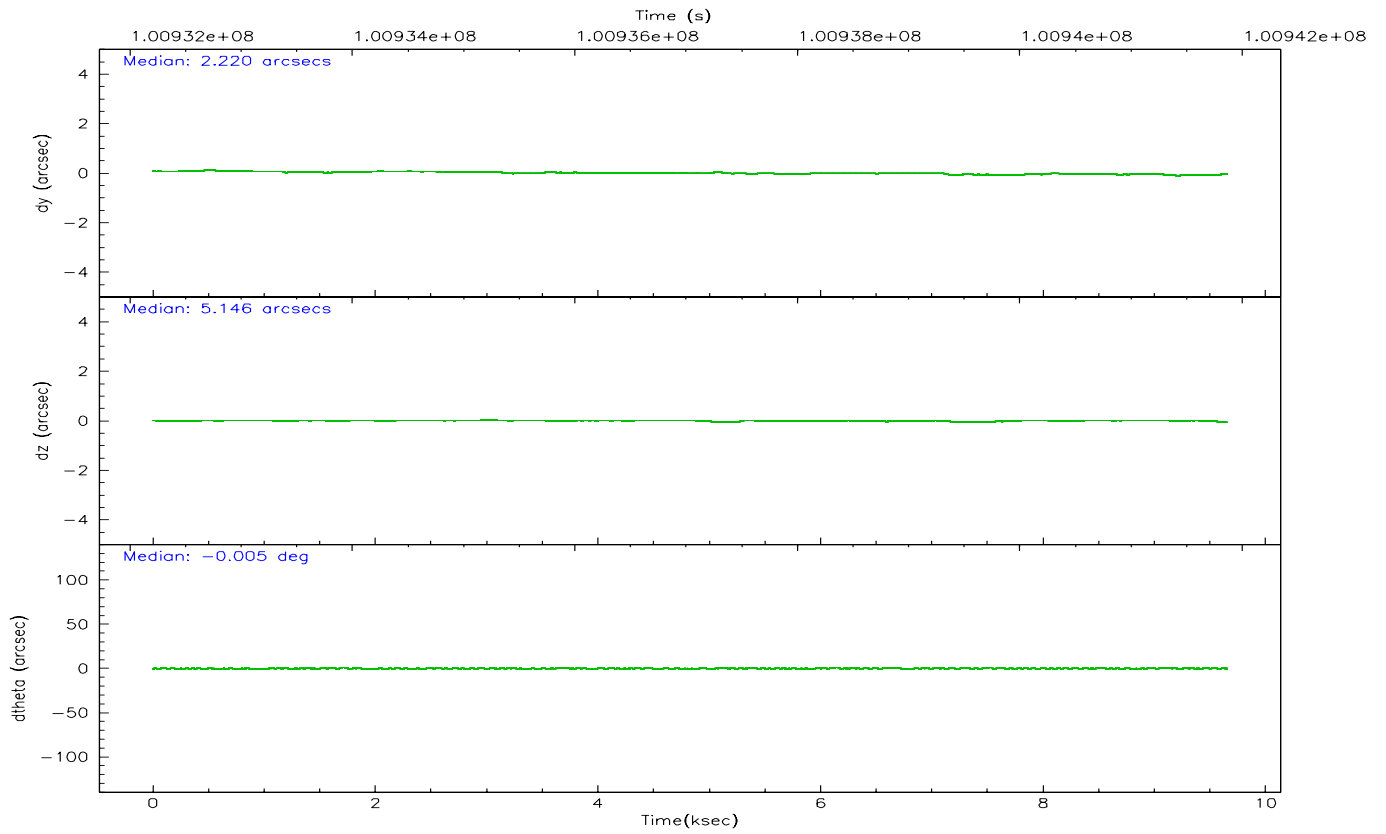
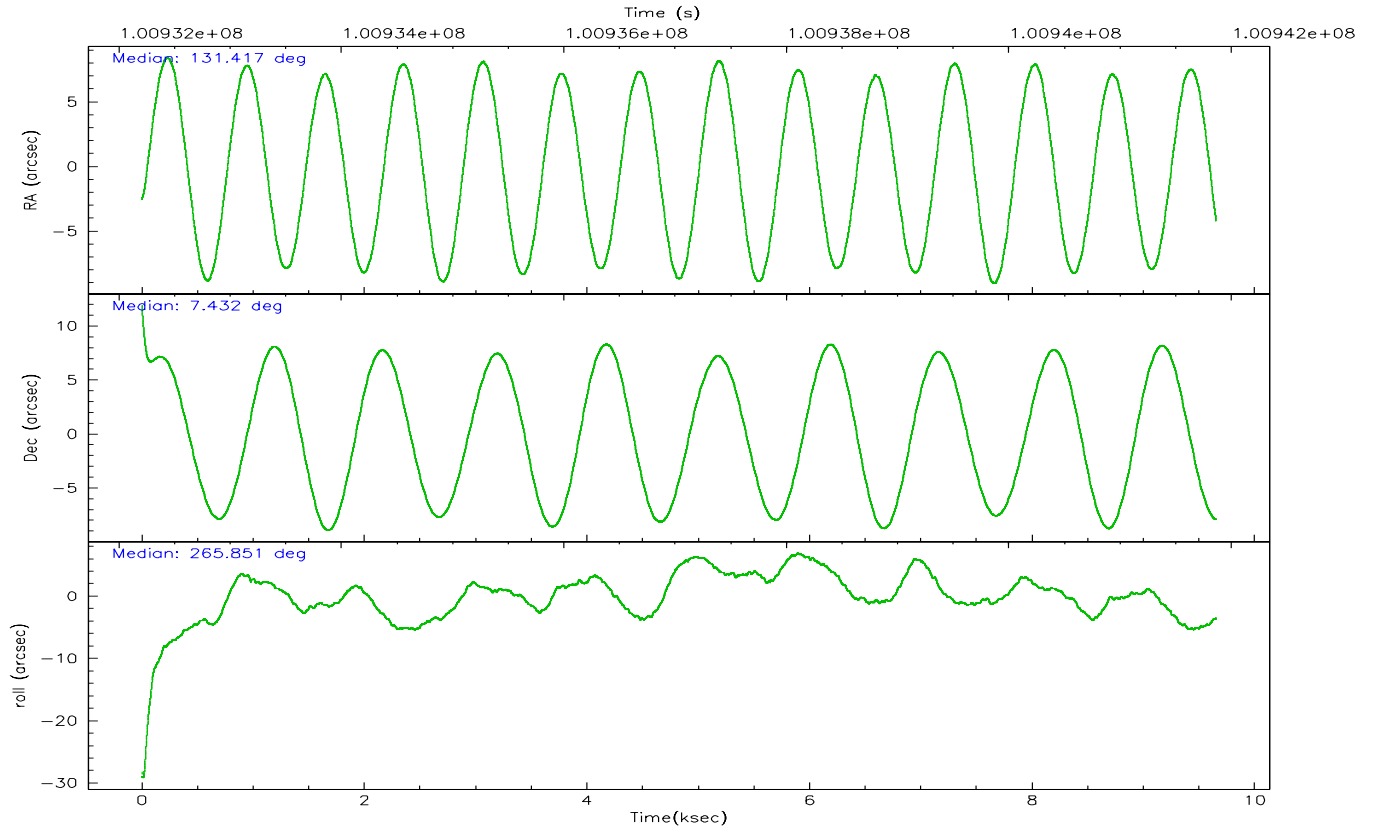
	ccd 2	ccd 3	ccd 5	ccd 6	ccd 7	ccd 8
grade 0 events	2905	3202	3502	3009	1905	5093
	4%	4%	3%	4%	2%	5%
grade 1 events	30	25	112	30	54	57
	0%	0%	0%	0%	0%	0%
grade 2 events	1607	1510	12692	1484	8075	3794
	2%	2%	13%	2%	9%	4%
grade 3 events	699	721	999	736	1754	1637
	1%	1%	1%	1%	2%	1%
grade 4 events	738	782	1011	744	1735	1640
	1%	1%	1%	1%	2%	1%
grade 5 events	2264	2476	4712	2846	5876	3556
	3%	3%	4%	4%	6%	4%
grade 6 events	1309	1337	23644	1533	19406	4891
	1%	2%	24%	2%	22%	5%
grade 7 events	59243	55125	48137	57160	46663	65296
	86%	84%	50%	84%	54%	75%

2.2 Compared Parameters

Parameter	Planned	Actual	Parameter	Planned	Actual
Instrument	ACIS	ACIS	Obspar format version number	6	6
Detector	ACIS-235678	ACIS-235678	Obspar file type	PREDICTED	ACTUAL
Grating	NONE	NONE	Obspar update status	NONE	UPDATED
Data mode	FAINT	FAINT	Number of optional ACIS chips dropped	0	0
Observation mode	POINTING	POINTING	On-chip summing requested	N	N
Pointing RA	131.404286	131.4166010296622	Subarray requested	NONE	NONE
Pointing Dec	7.456108	7.431685853161658	Alternating exposures requested	N	N
Pointing Roll	265.696312	265.8513253977524	Primary exposure time	0.000000	3.2
SIM focus pos (mm)	-0.684267	-0.6828225247311905			
SIM defocus (mm)	0	0.001444936568705701			
SIM translation stage pos (mm)	-190.132523	-190.1400660498719			
SIM translation stage offset (mm)	0	0.00754346686406393			
Observation start time	100932363.184000	100931011.92892			
Observation start date	2001-03-14T04:44:59	2001-03-14T04:23:31			
Observation end time	100941863.184000	100942531.90437			
Observation end date	2001-03-14T07:23:19	2001-03-14T07:35:31			
Read mode	TIMED	TIMED			

2.3 Aspect



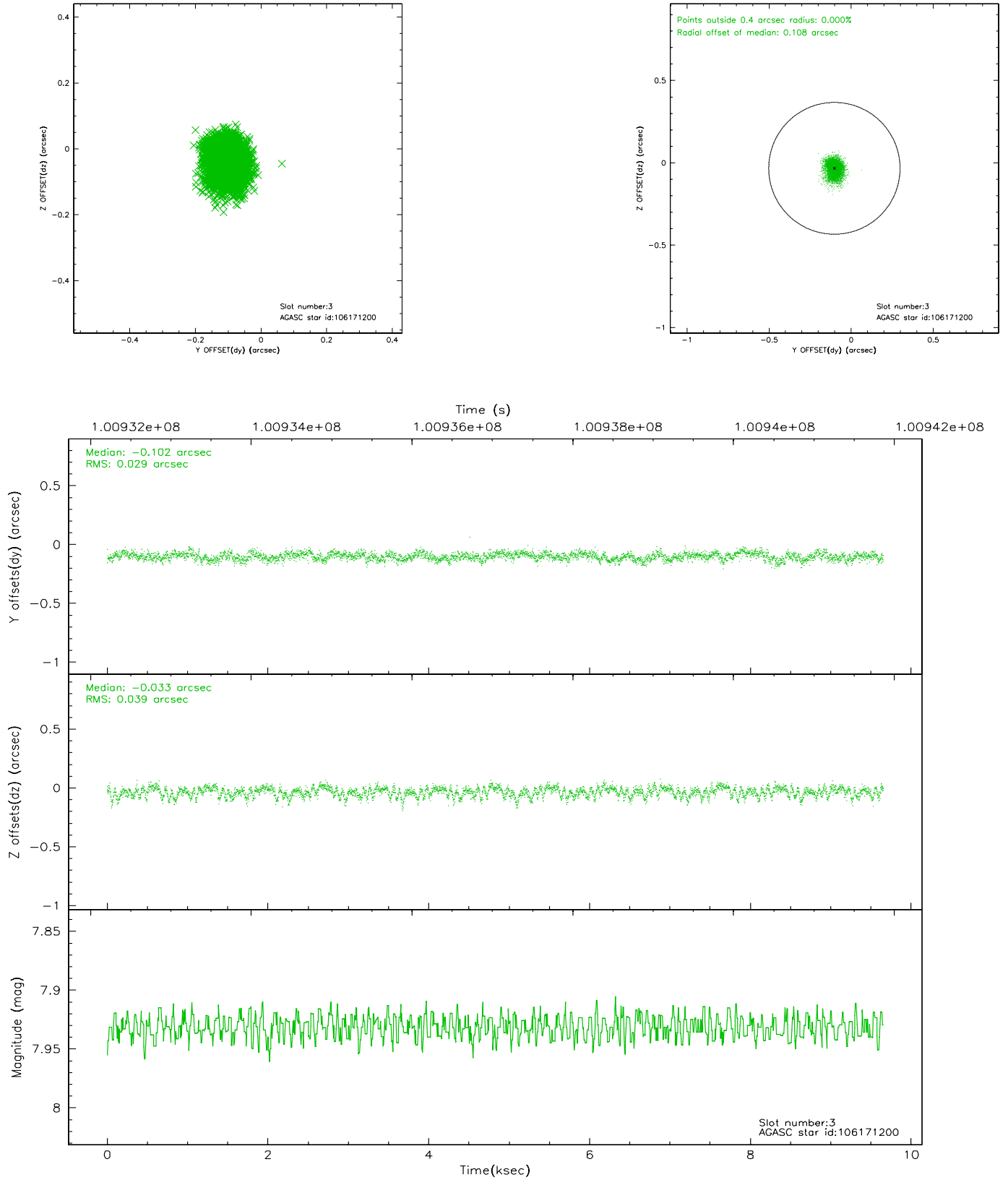


Slot Statistics

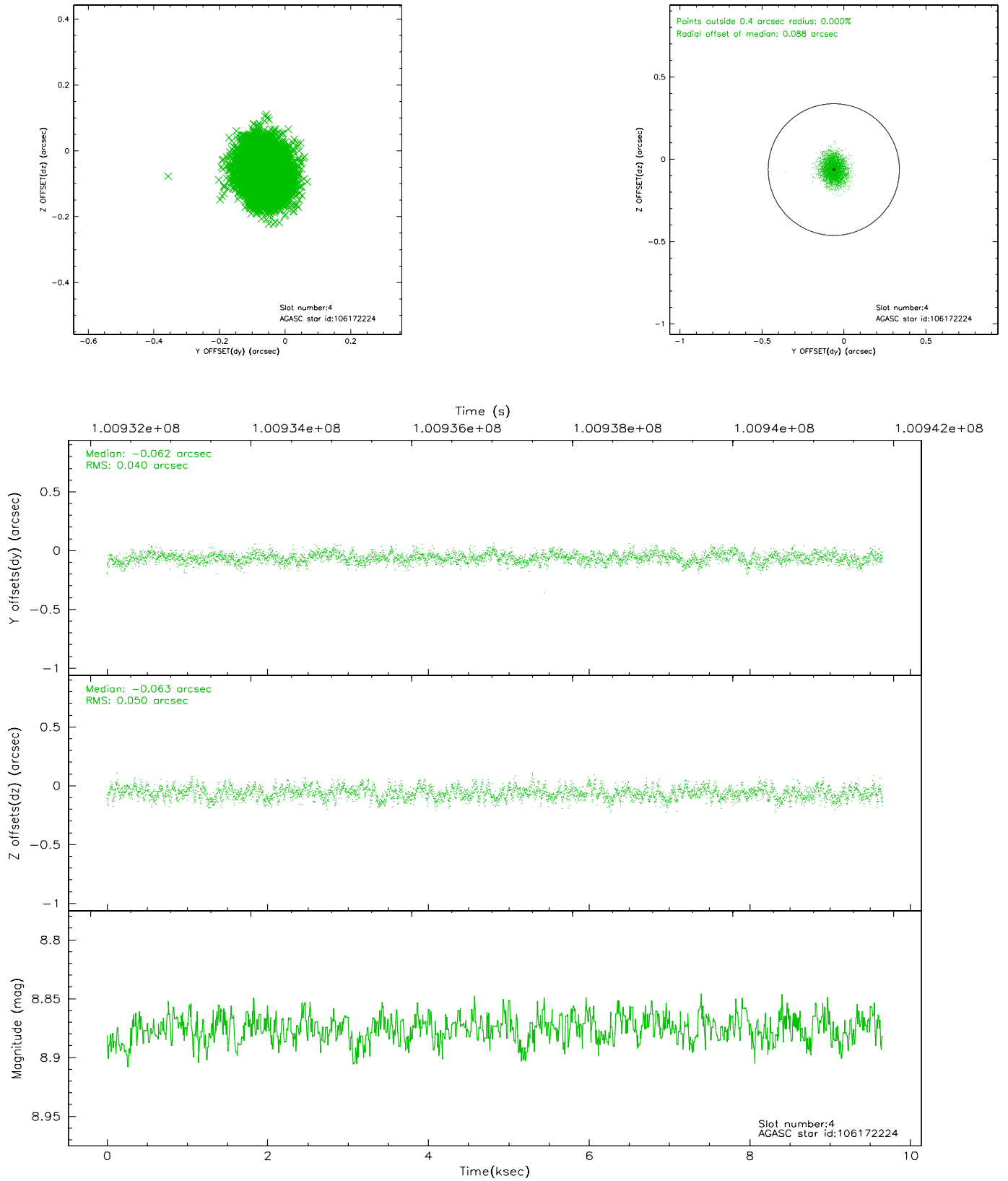
slot	status	id	mag	n_pts	med_dy	med_dz	dr1	dr2	ra	dec	mean_y	mean_z
0	FID	ACIS-S-2	7.11	2355	-0.024	0.019	0.006	0.010	0.000000	0.000000	-754.83	-1726.26
1	FID	ACIS-S-4	7.20	2355	-0.071	0.006	0.005	0.008	0.000000	0.000000	2158.11	181.70
2	FID	ACIS-S-5	7.24	2355	0.063	-0.016	0.006	0.010	0.000000	0.000000	-1806.91	175.90
3	GUIDE	106171200	7.93	4710	-0.102	-0.033	0.052	0.084	131.209701	7.621491	-540.68	-737.73
4	GUIDE	106172224	8.88	4709	-0.062	-0.063	0.069	0.110	131.000909	7.699425	-765.16	-1501.67
5	GUIDE	106174520	8.97	4708	-0.086	-0.039	0.068	0.111	131.124139	8.078906	-2160.24	-1165.05
6	GUIDE	29365320	9.10	4707	0.119	0.064	0.070	0.112	131.764940	7.141683	1032.39	1368.76
7	GUIDE	29231608	9.69	4690	0.132	0.077	0.088	0.141	131.202086	6.979946	1764.96	-592.17

2.4 Star Slots

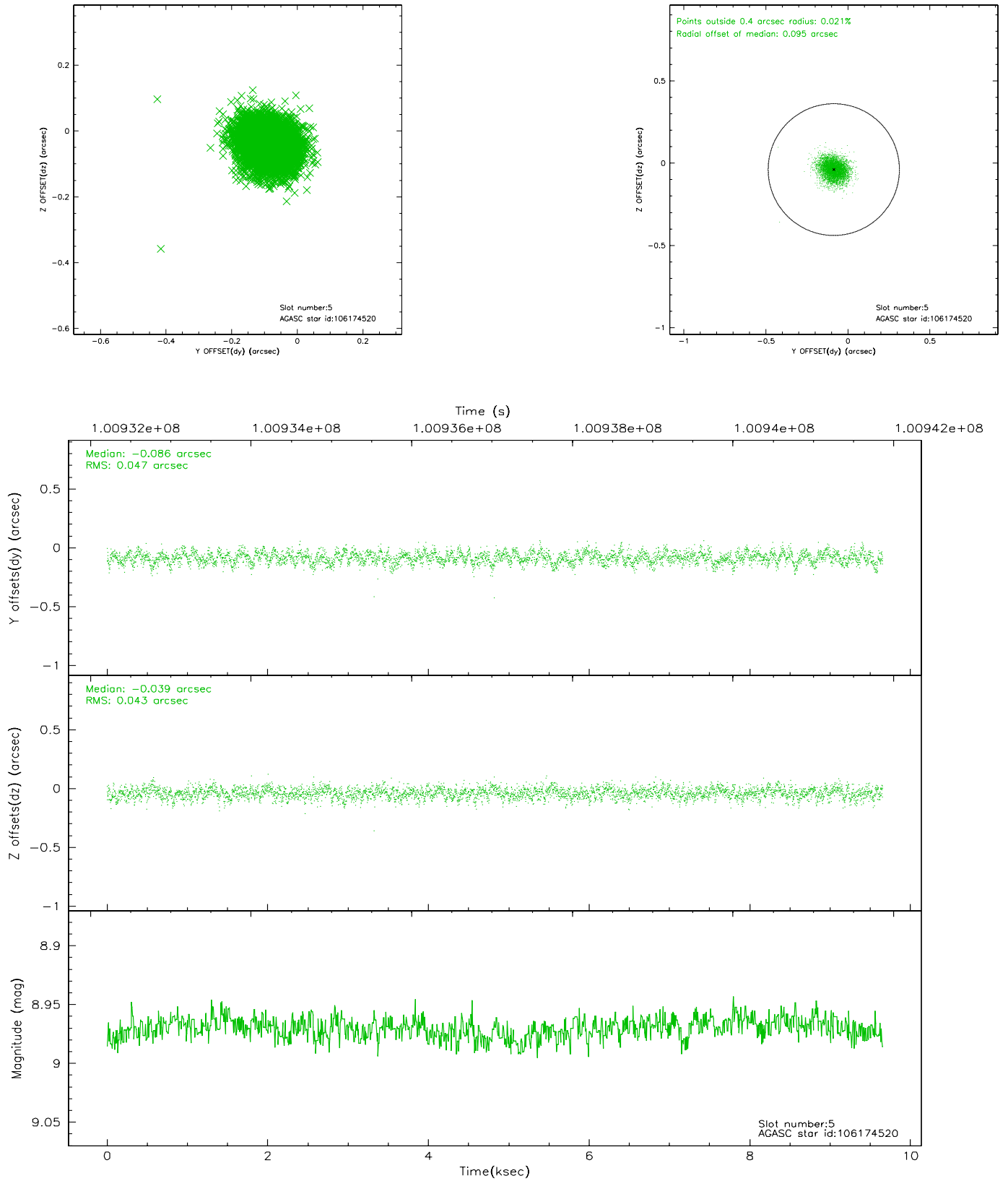
2.4.1 Slot 3



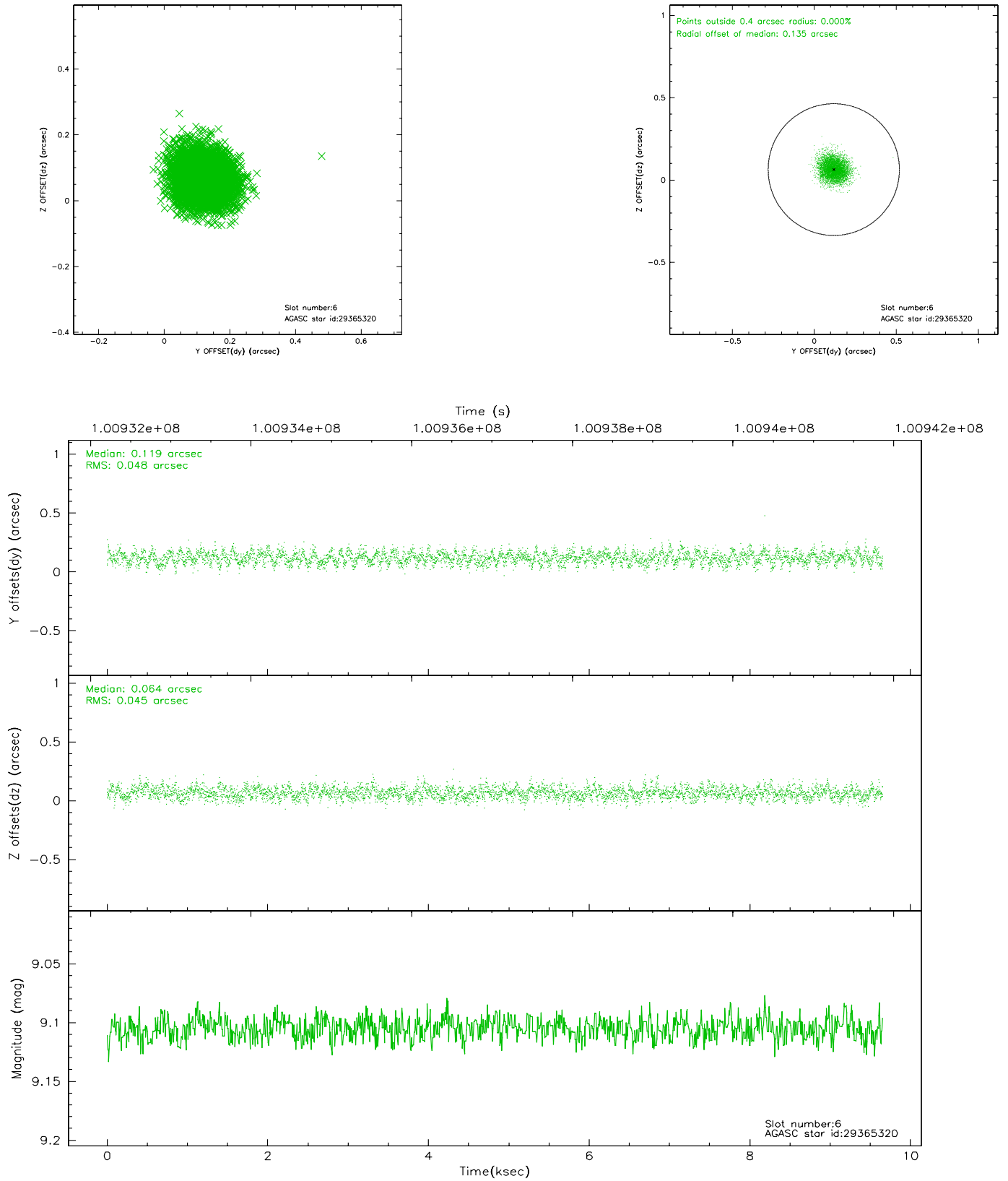
2.4.2 Slot 4



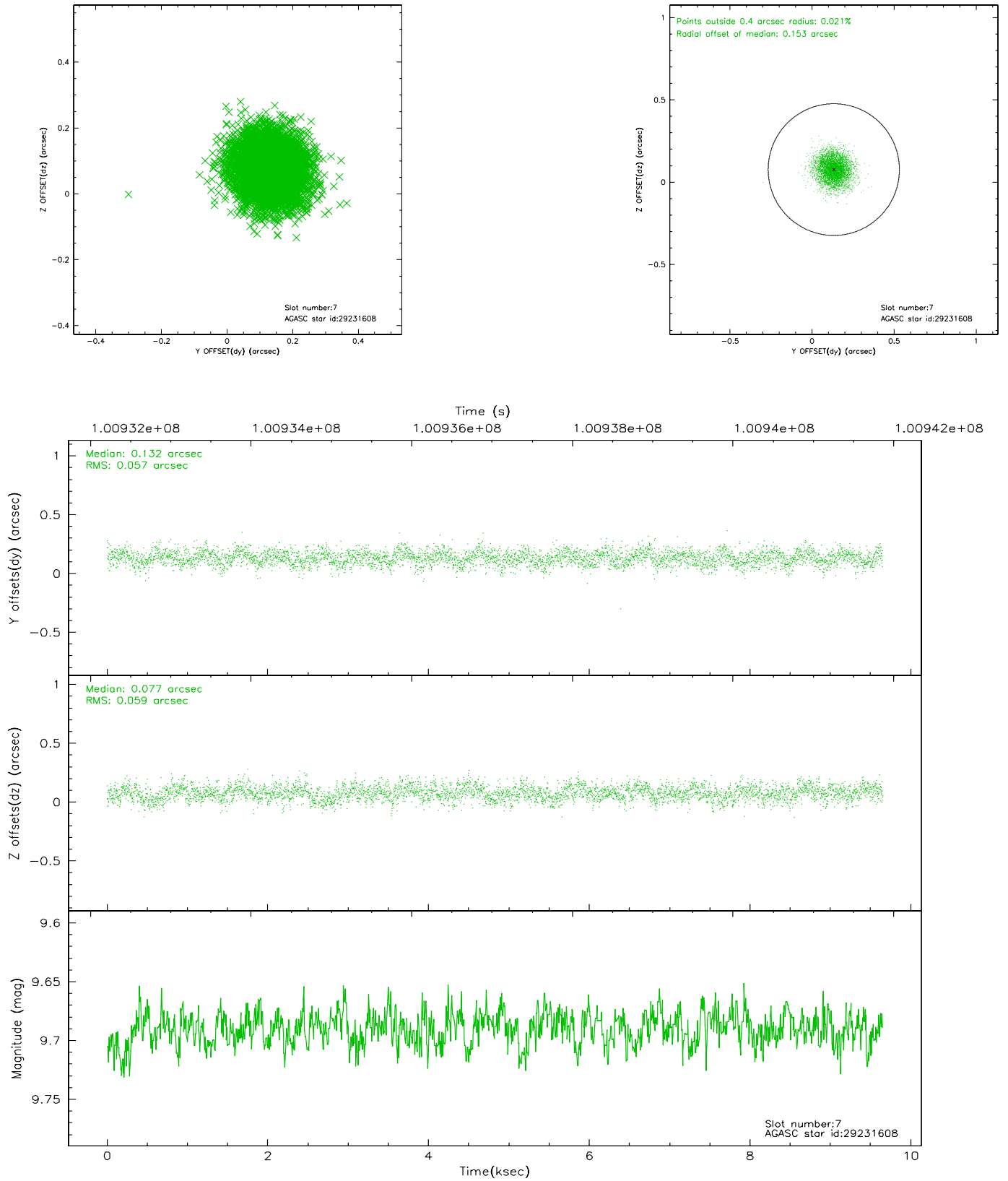
2.4.3 Slot 5



2.4.4 Slot 6

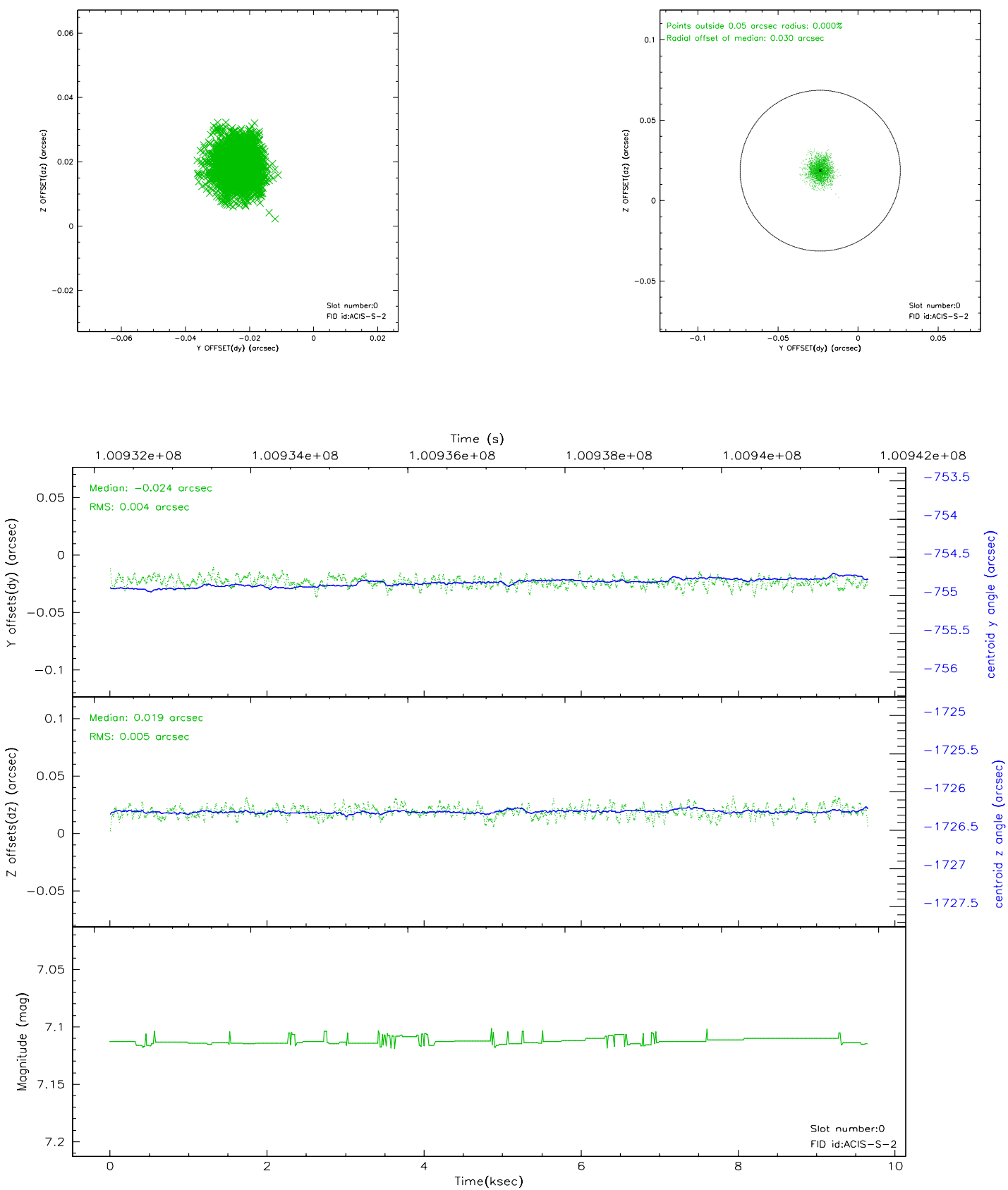


2.4.5 Slot 7

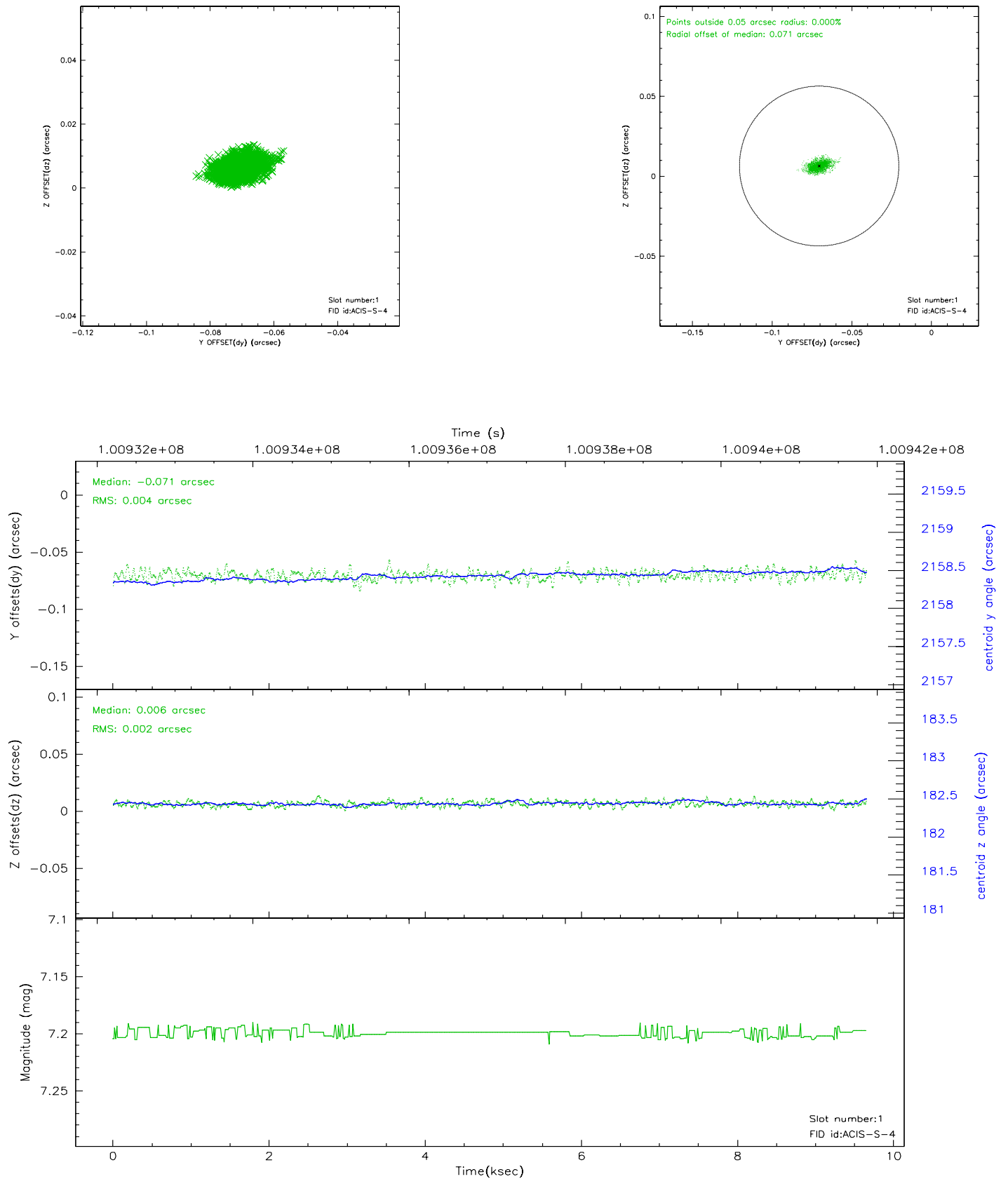


2.5 FID Slots

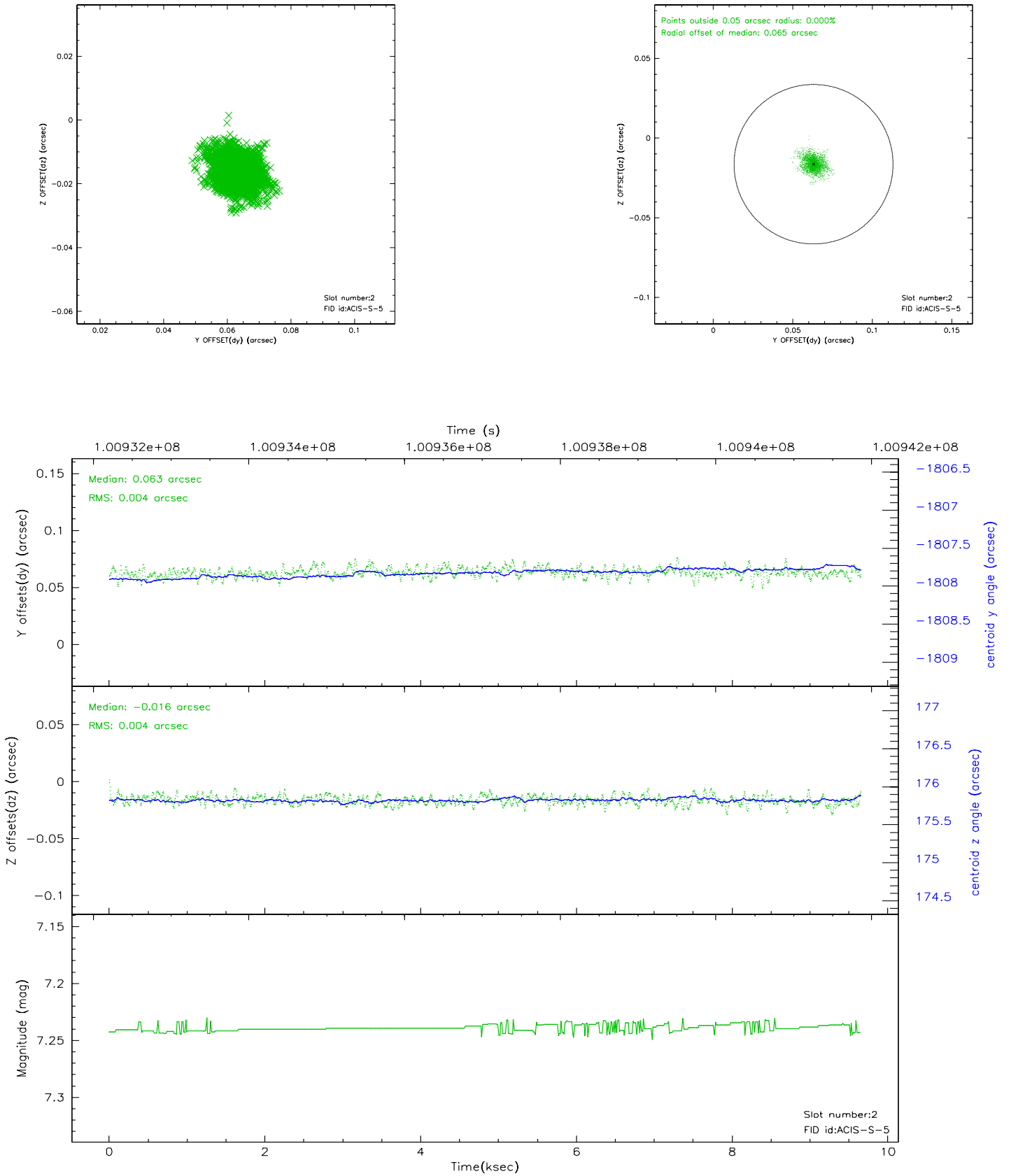
2.5.1 Slot 0



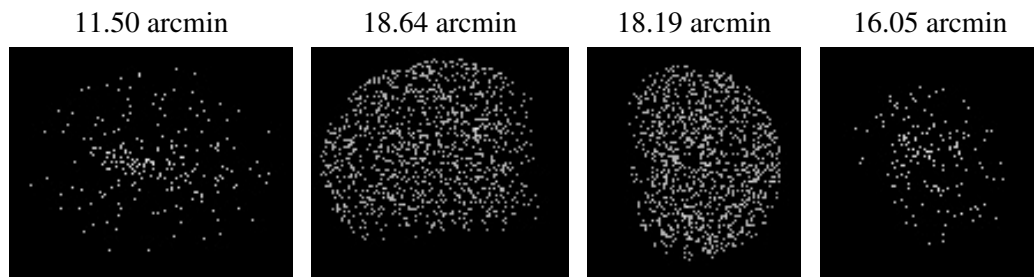
2.5.2 Slot 1



2.5.3 Slot 2



3 Point Sources



A Summary

A.1 Status

V&V Scientist	Joy Nichols
V&V Date (YYYY-MM-DD)	2006.12.13
V&V Edition	1
V&V Disposition and Status	OK
V&V Charge Time	8.499

A.2 Comments

Charge time for this ObsId remains at original value of 8.499 ks,
although
with the current processing the charge time would have been 9.6448 ksec.