

V&V Reference Report

L2 ASCDS Version : 7.6.11

Observation 2077 - L2 Version 3
Chandra X-Ray Center

L2 Processing Date : Jul 23 2007

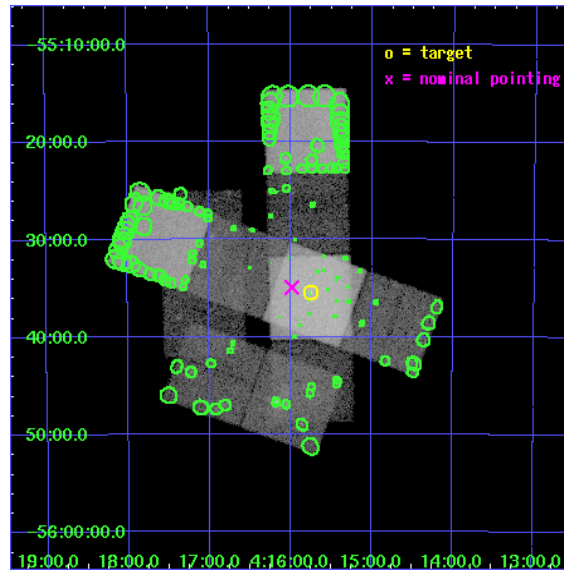
Contents

1	Front	3
2	OBI	4
2.1	OBI	4
2.1.1	Images	4
2.1.2	Bias	4
2.1.3	Parameters	5
2.1.4	Events	5
2.2	Compared Parameters	6
2.3	Aspect	7
2.4	Star Slots	10
2.4.1	Slot 3	10
2.4.2	Slot 4	11
2.4.3	Slot 5	12
2.4.4	Slot 6	13
2.4.5	Slot 7	14
2.5	FID Slots	15
2.5.1	Slot 0	15
2.5.2	Slot 1	16
2.5.3	Slot 2	17
3	OBI	18
3.1	OBI	18
3.1.1	Images	18
3.1.2	Bias	18
3.1.3	Parameters	19
3.1.4	Events	19
3.2	Compared Parameters	20
3.3	Aspect	21
3.4	Star Slots	24
3.4.1	Slot 3	24
3.4.2	Slot 4	25
3.4.3	Slot 5	26
3.4.4	Slot 6	27

3.4.5	Slot 7	28
3.5	FID Slots	29
3.5.1	Slot 0	29
3.5.2	Slot 1	30
3.5.3	Slot 2	31
4	Point Sources	32
A	Summary	33
A.1	Status	33
A.2	Comments	33

1 Front

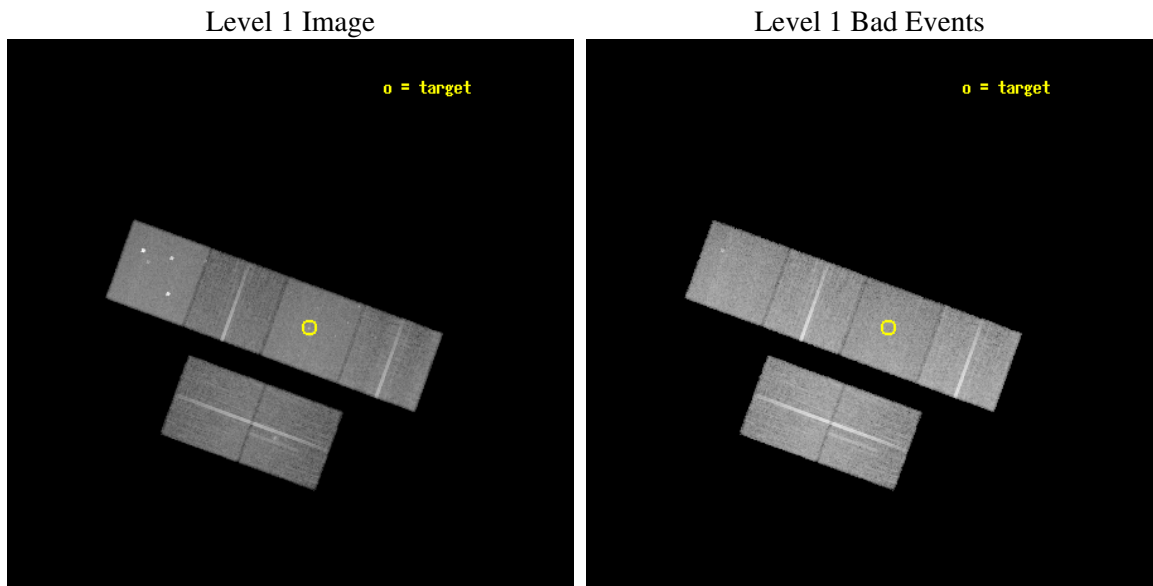
seq_num	600211
obs_id	2077
title	GALACTIC WINDS AND COOLING FLOWS IN ELLIPTICAL GALAXIES
observer	JOEL BREGMAN
object	NGC 1549
dtcycle	0
cycle	P
ra_targ	63.9375
dec_targ	-55.591944
ra_nom	63.995614
dec_nom	-55.582525
roll_nom	19.953641
revision	3
ontime	36994.500010163
livetime	36526.05337562
ontime2	36994.500010163
ontime3	36994.500010163
ontime5	36994.500010163
ontime6	36991.259029999
ontime7	36994.500010163
ontime8	36991.259029999
l2events	513644



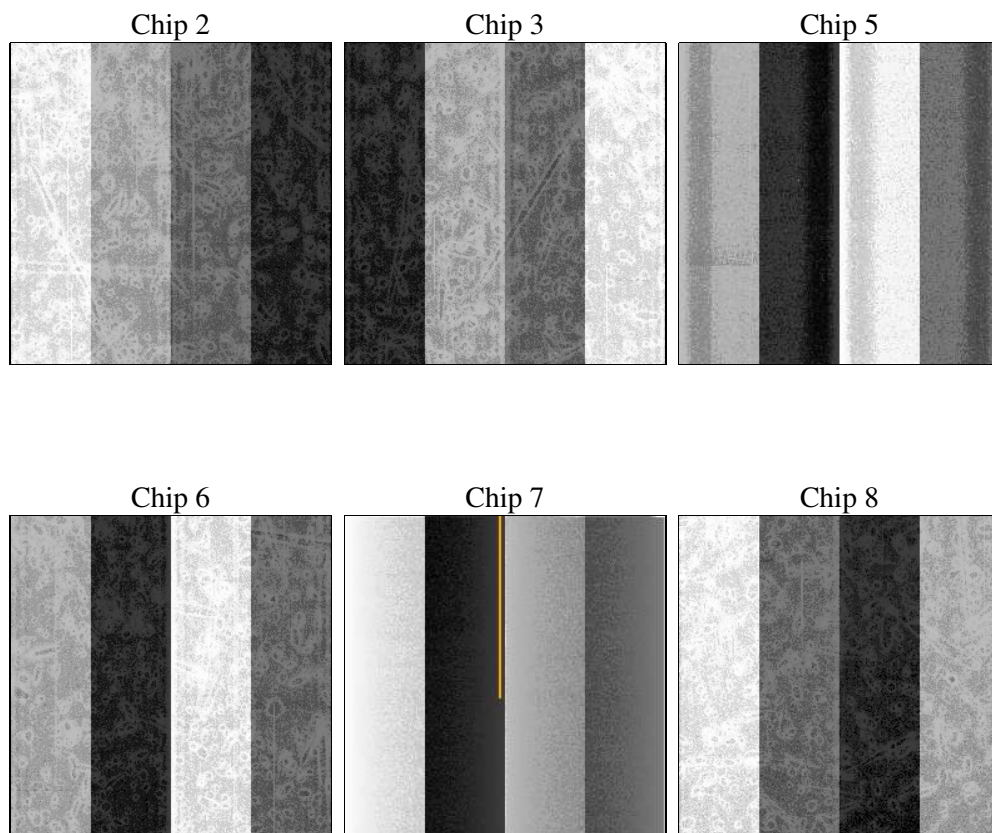
2 OBI

2.1 OBI

2.1.1 Images



2.1.2 Bias



2.1.3 Parameters

obi_num	0
ascdsver	7.6.11
caldsver	3.4.0
date	2007-07-24T00:07:22
revision	2

sched_exp_time	37319.151000
ontime	26082.5
ontime2	26082.5
ontime3	26082.5
ontime5	26082.5
ontime6	26082.5
ontime7	26082.5
ontime8	26079.259019837
l1events	1104062

2.1.4 Events

	ccd 2	ccd 3	ccd 5	ccd 6	ccd 7	ccd 8
level 1 events	160805	155561	231140	157680	205564	193312
rejected events	141280	134032	113653	137764	113029	153748
rejected %	87%	86%	49%	87%	54%	79%

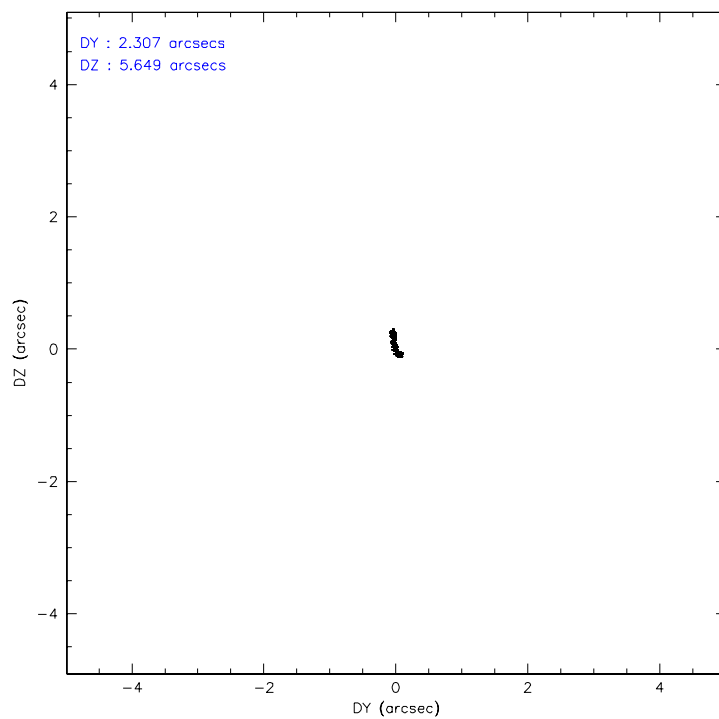
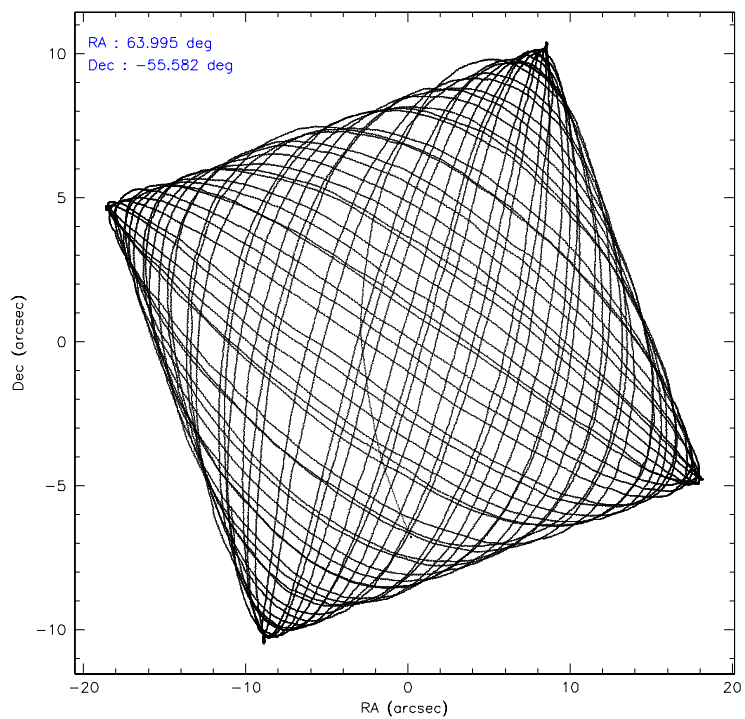
	ccd 2	ccd 3	ccd 5	ccd 6	ccd 7	ccd 8
grade 0 events	8955	10714	19836	8553	11027	13297
	5%	6%	8%	5%	5%	6%
grade 1 events	76	90	543	72	192	108
	0%	0%	0%	0%	0%	0%
grade 2 events	4007	3947	35803	3851	18451	8469
	2%	2%	15%	2%	8%	4%
grade 3 events	1758	1793	4908	1908	8476	4097
	1%	1%	2%	1%	4%	2%
grade 4 events	1661	1870	4776	1847	8570	3739
	1%	1%	2%	1%	4%	1%
grade 5 events	5152	5660	16264	6240	18696	7851
	3%	3%	7%	3%	9%	4%
grade 6 events	3360	3408	53075	3977	46880	10180
	2%	2%	22%	2%	22%	5%
grade 7 events	135836	128079	95935	131232	93272	145571
	84%	82%	41%	83%	45%	75%

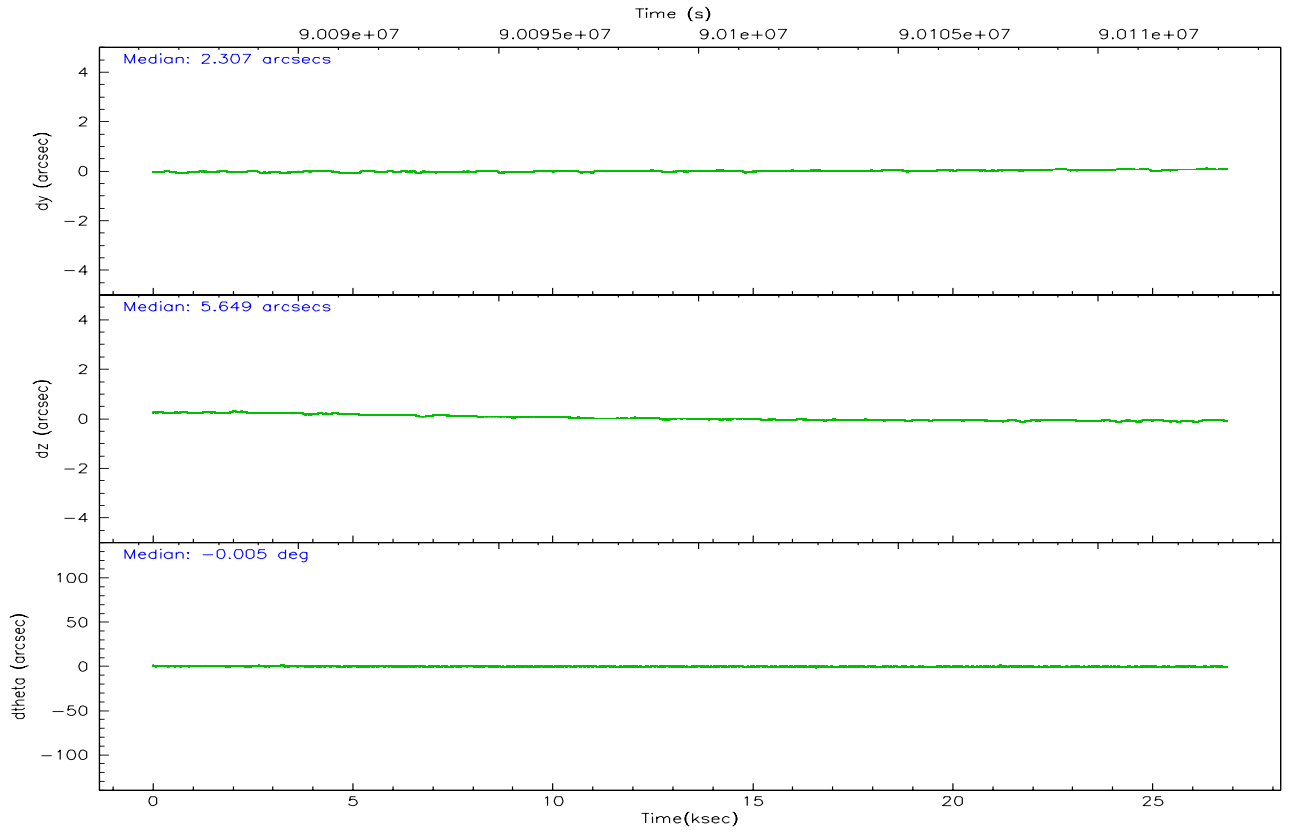
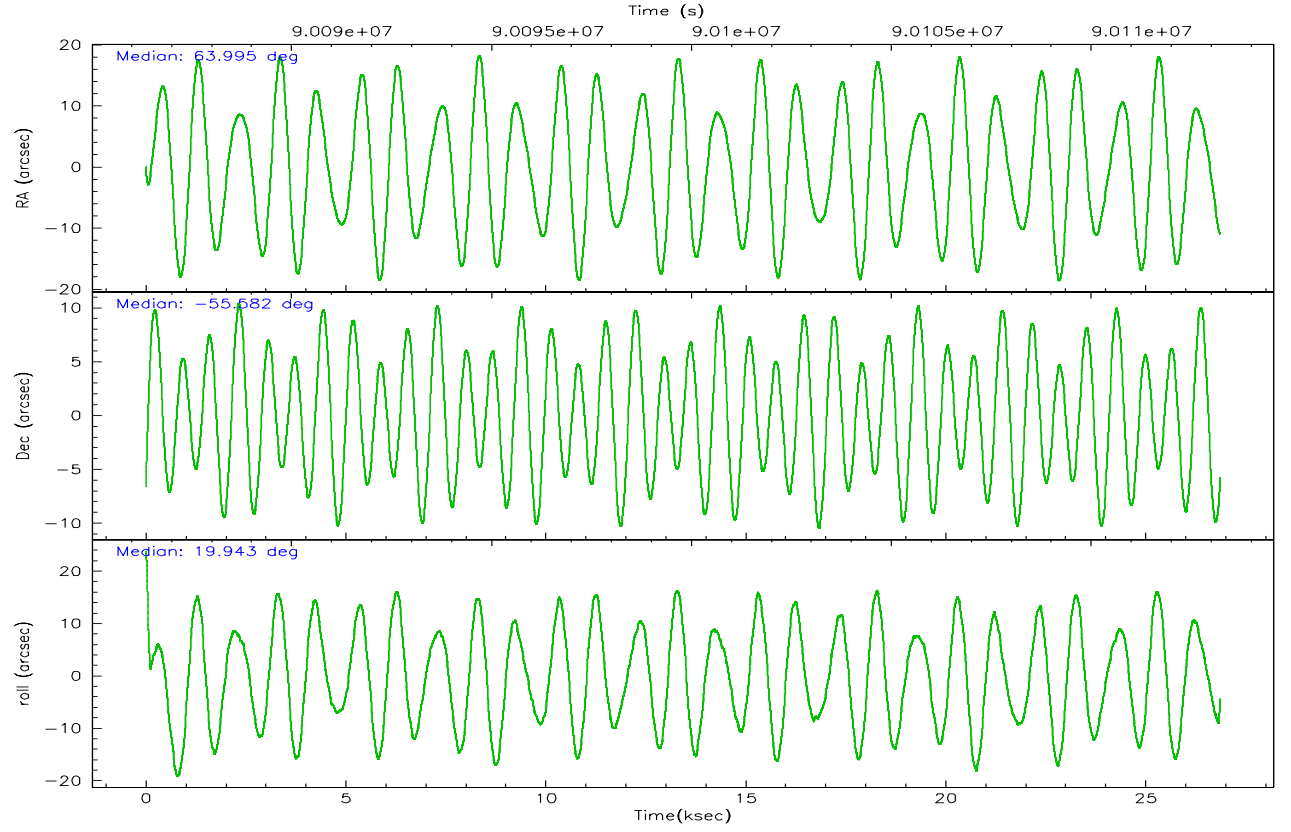
2.2 Compared Parameters

Parameter	Planned	Actual
Instrument	ACIS	ACIS
Detector	ACIS-235678	ACIS-235678
Grating	NONE	NONE
Data mode	FAINT	FAINT
Observation mode	POINTING	POINTING
Pointing RA	63.9375	63.99413540284523
Pointing Dec	-55.591944	-55.58229841723752
Pointing Roll	19.770306	19.95242092185222
SIM focus pos (mm)	-0.68282252473119	-0.68282252473119
SIM defocus (mm)	0.001444942264670734	0.001444942264670734
SIM translation stage pos (mm)	-190.1400660499	-190.1400660499
SIM translation stage offset (mm)	0.007542945932812017	0.007542945932812017
Observation start time	90085610.184	90085610.184
Observation start date	2000-11-08T15:46:50	2000-11-08T15:46:50
Observation end time	90113224.03848	90113224.03848
Observation end date	2000-11-08T23:27:04	2000-11-08T23:27:04
Read mode	TIMED	TIMED

Parameter	Planned	Actual
Obspar format version number	6	6
Obspar file type	PREDICTED	ACTUAL
Obspar update status	OVERRIDE	OVERRIDE
On-chip summing requested	N	N
Subarray requested	NONE	NONE
Alternating exposures requested	N	N
Primary exposure time	0.000000	0.000000

2.3 Aspect



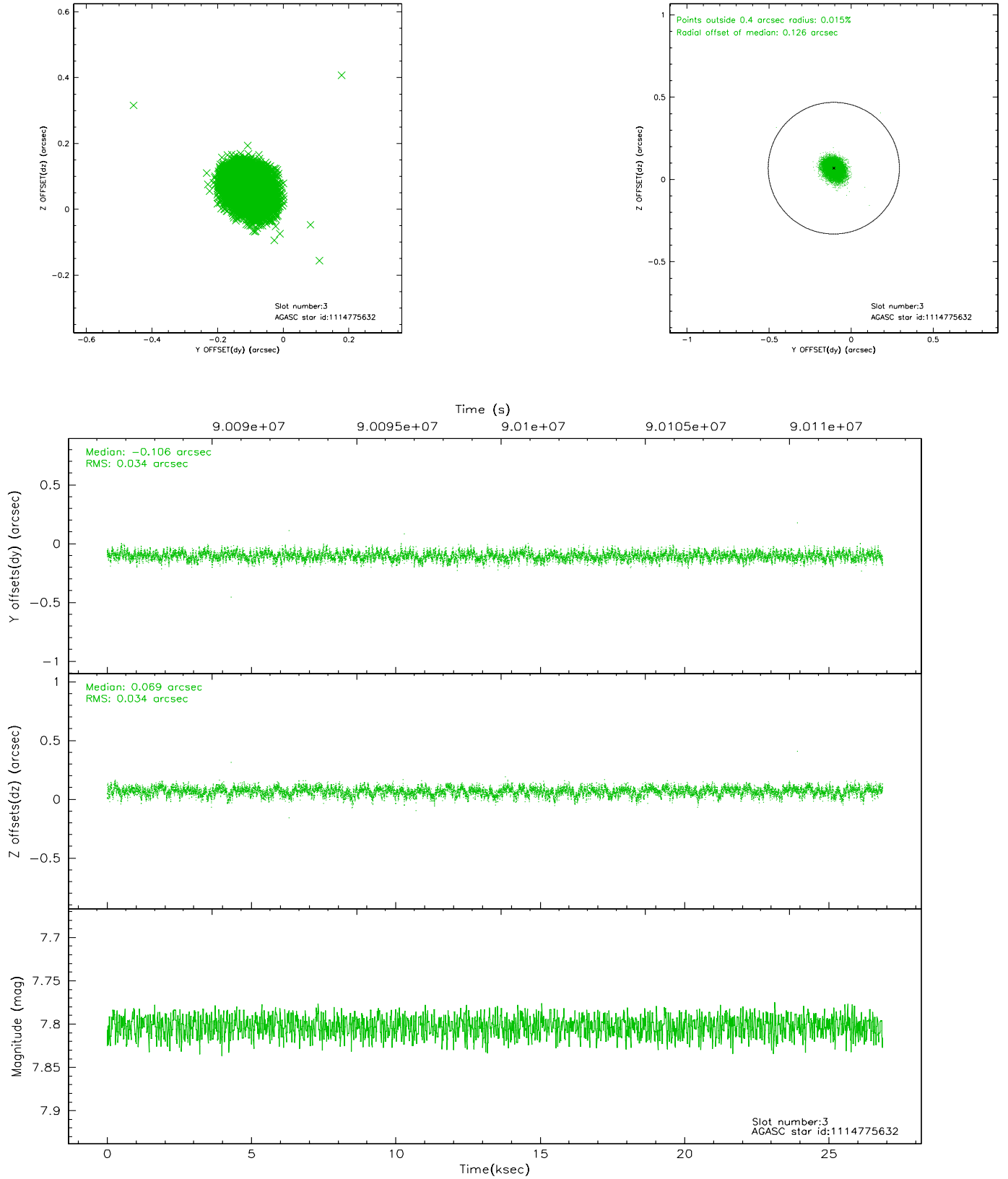


Slot Statistics

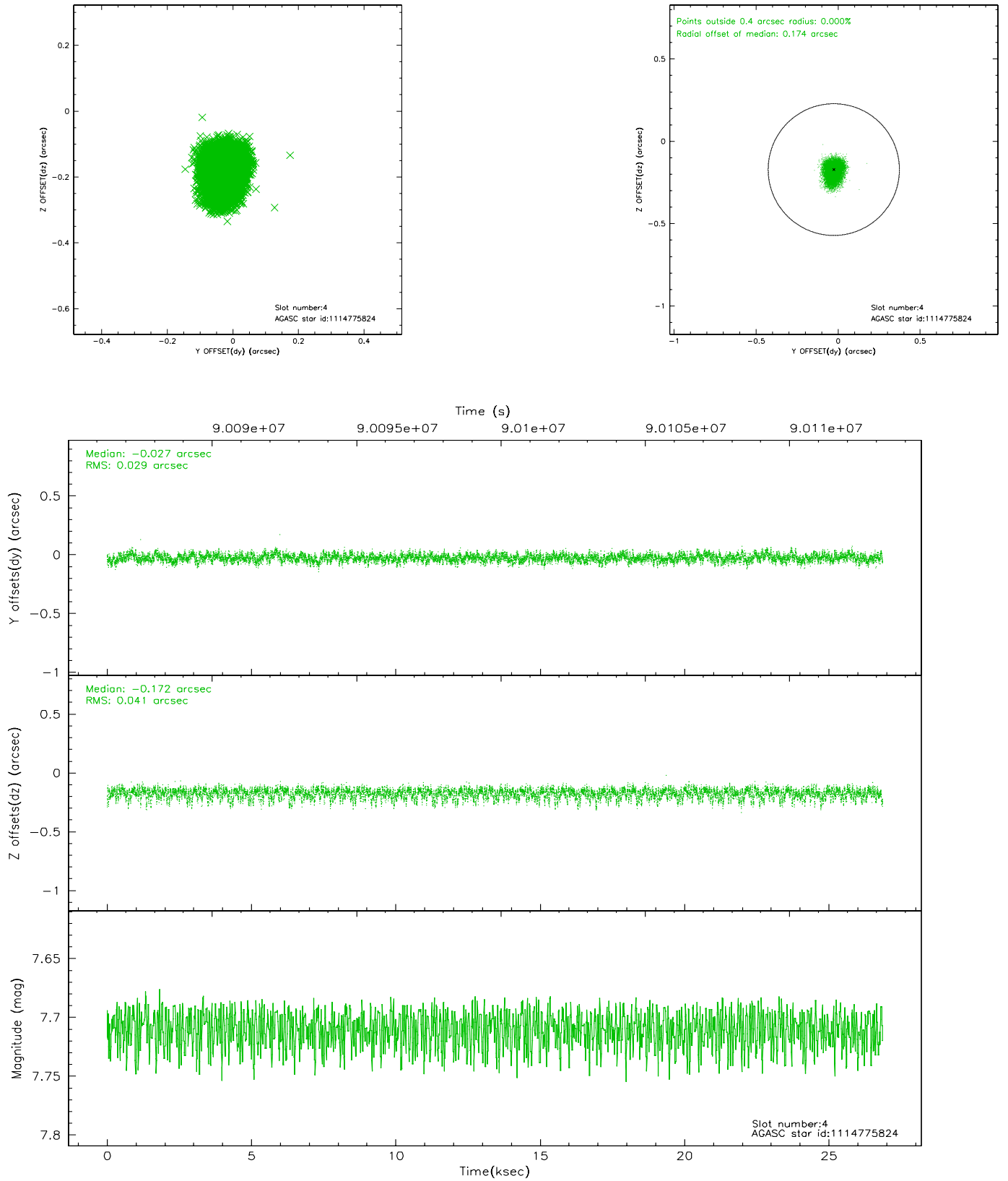
slot	status	id	mag	n_pts	med_dy	med_dz	dr1	dr2	ra	dec	mean_y	mean_z
0	FID	ACIS-S-2	7.11	6552	-0.038	0.017	0.008	0.012	0.000000	0.000000	-754.94	-1726.82
1	FID	ACIS-S-4	7.20	6550	-0.038	0.014	0.006	0.011	0.000000	0.000000	2158.26	181.62
2	FID	ACIS-S-5	7.24	6549	0.045	-0.022	0.006	0.010	0.000000	0.000000	-1807.60	175.29
3	GUIDE	1114775632	7.80	13101	-0.106	0.069	0.051	0.083	64.496457	-56.186453	293.49	-2340.22
4	GUIDE	1114775824	7.71	13103	-0.027	-0.172	0.052	0.089	63.546841	-56.176767	-1484.71	-1663.05
5	GUIDE	1114778096	8.35	13103	0.015	0.032	0.055	0.089	63.962428	-55.646331	-54.62	-144.87
6	GUIDE	1114780856	8.94	13097	-0.041	-0.098	0.073	0.118	63.289565	-55.495207	-1164.26	824.78
7	GUIDE	1114781480	10.30	13094	0.157	0.178	0.139	0.230	63.991337	-55.124059	637.29	1604.89

2.4 Star Slots

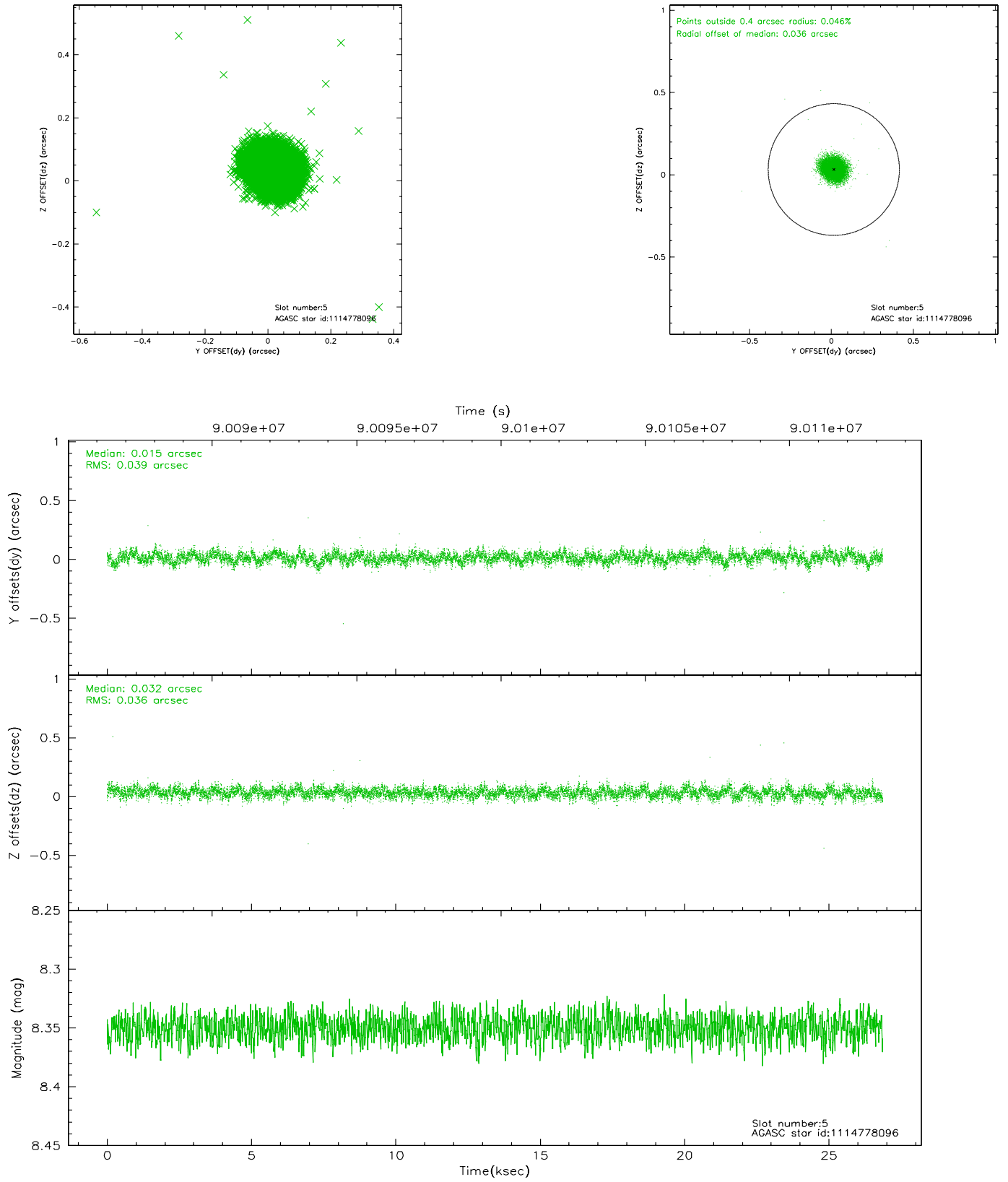
2.4.1 Slot 3



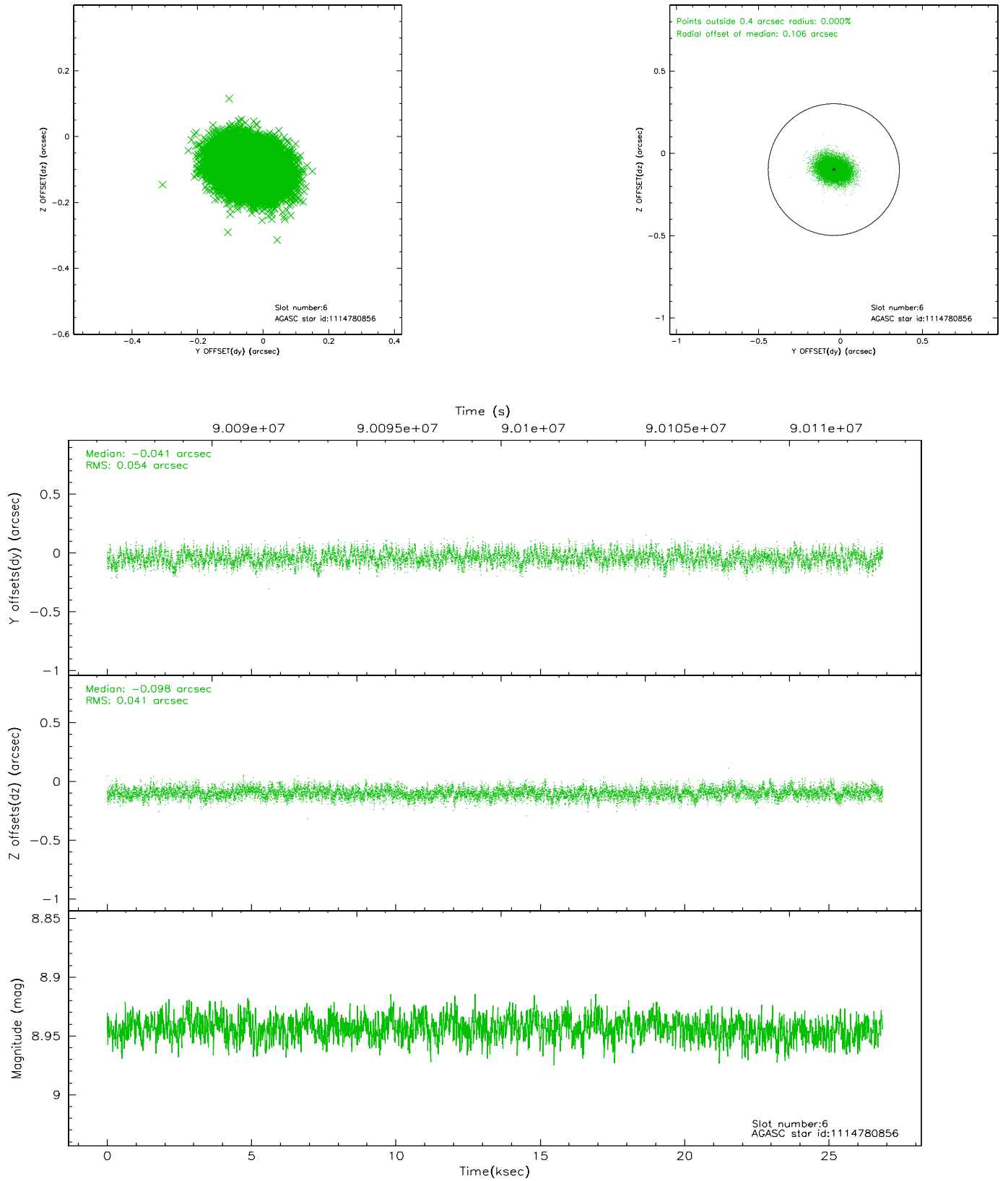
2.4.2 Slot 4



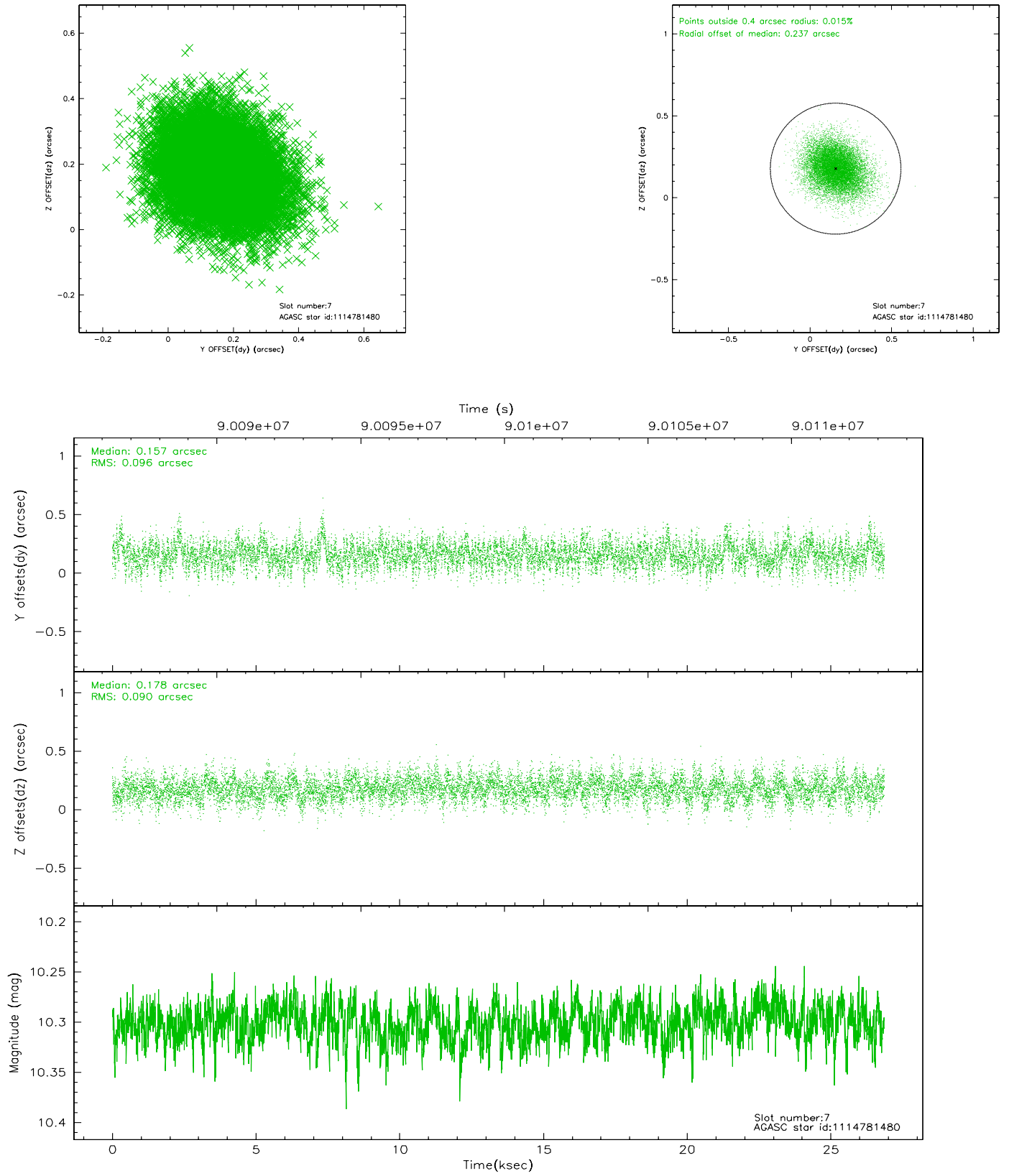
2.4.3 Slot 5



2.4.4 Slot 6

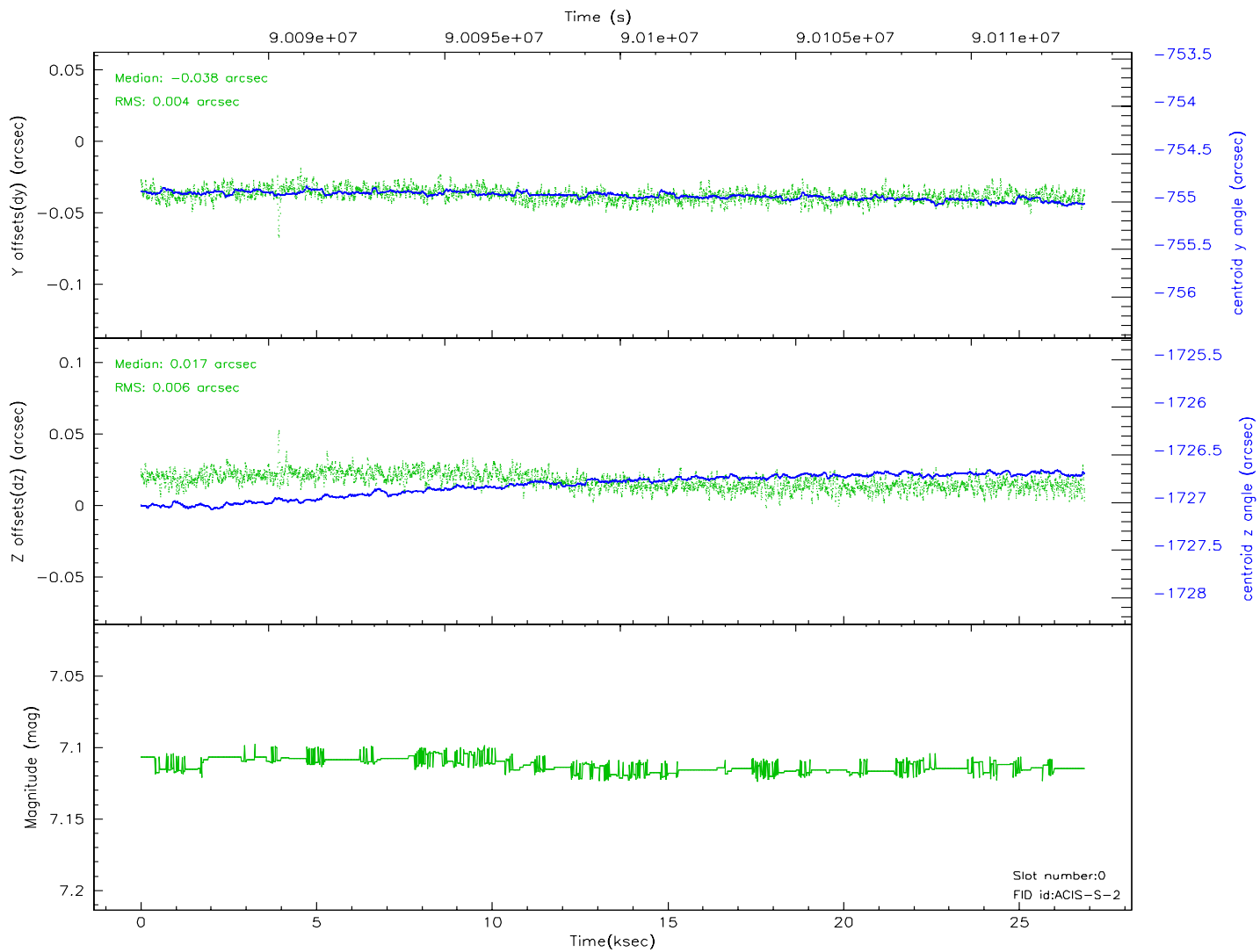
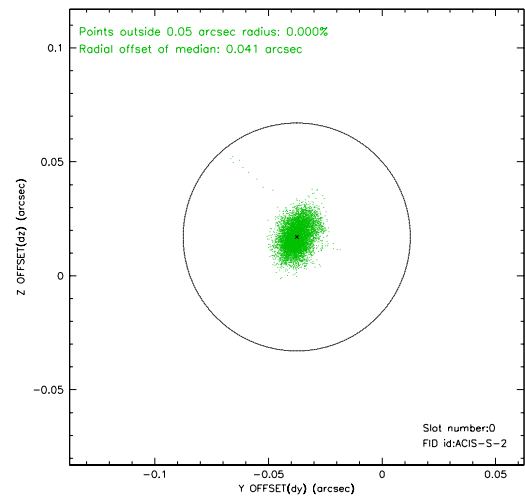
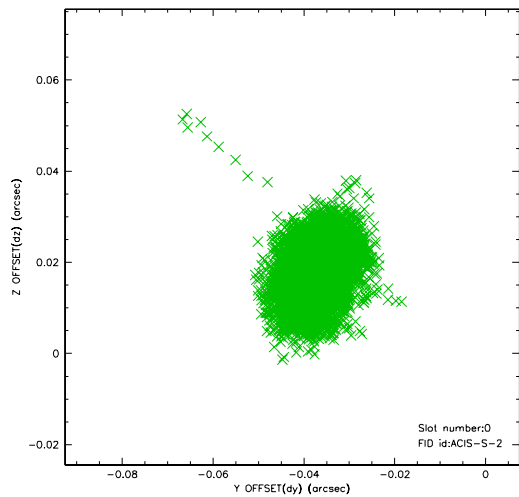


2.4.5 Slot 7

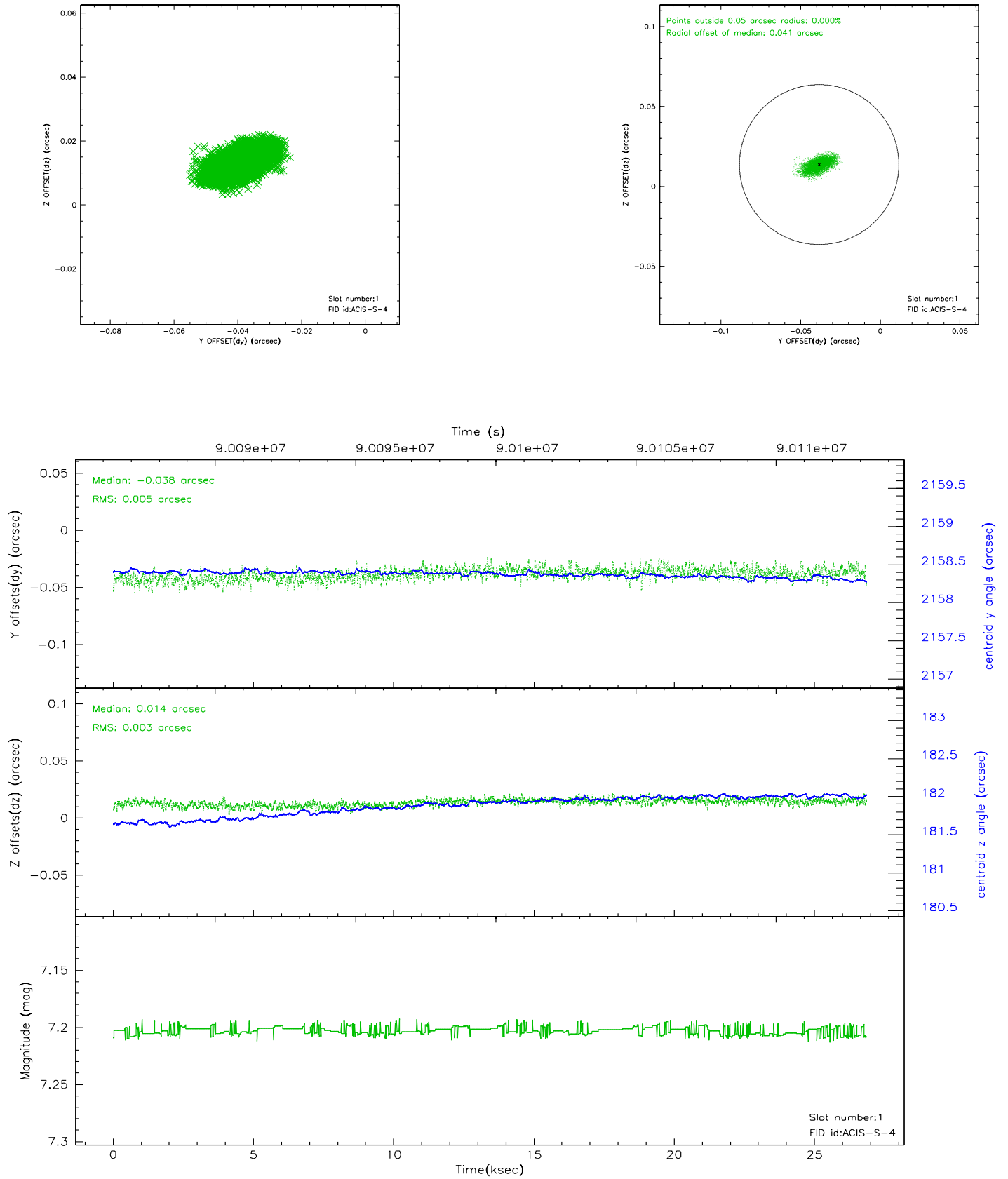


2.5 FID Slots

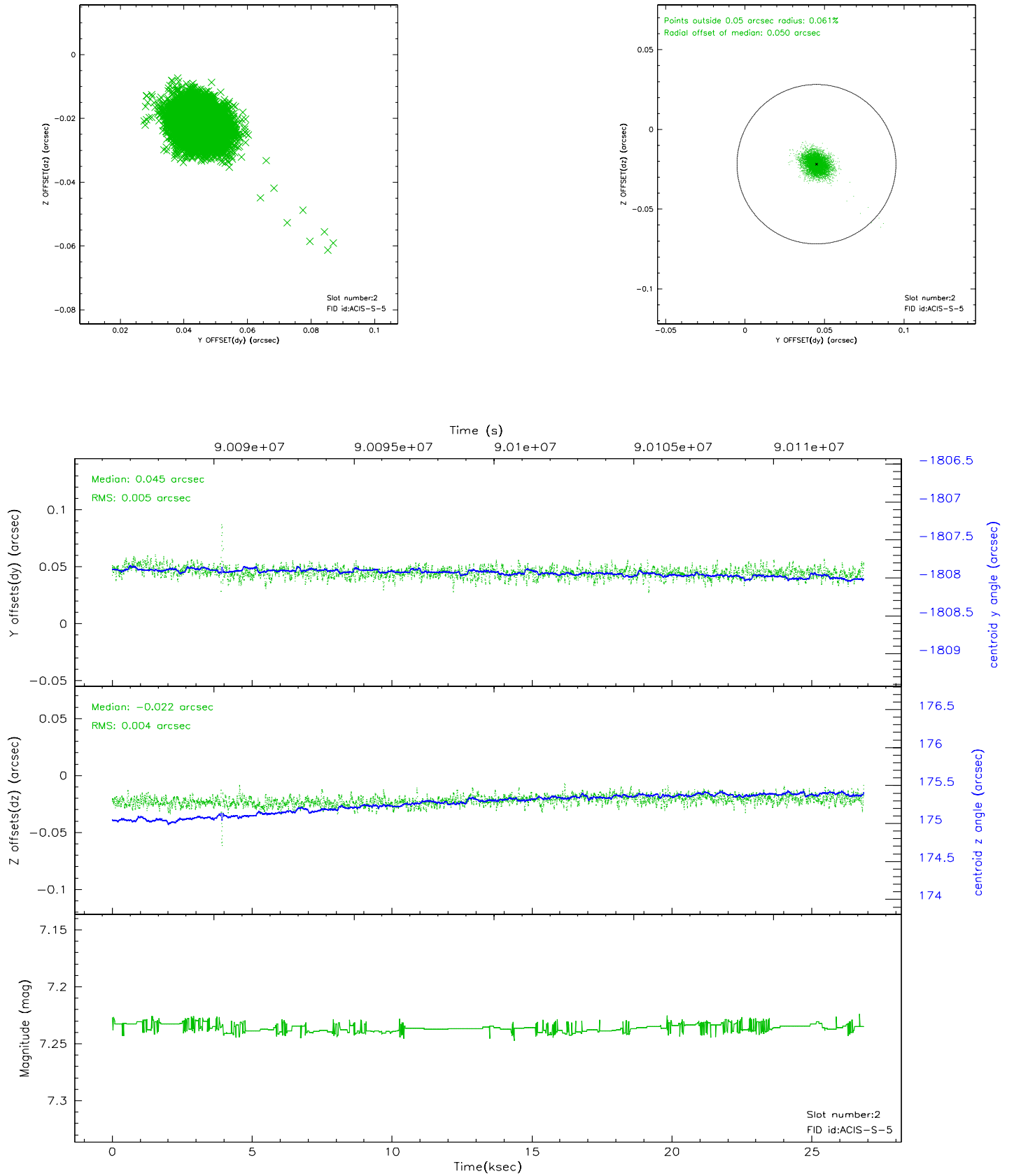
2.5.1 Slot 0



2.5.2 Slot 1



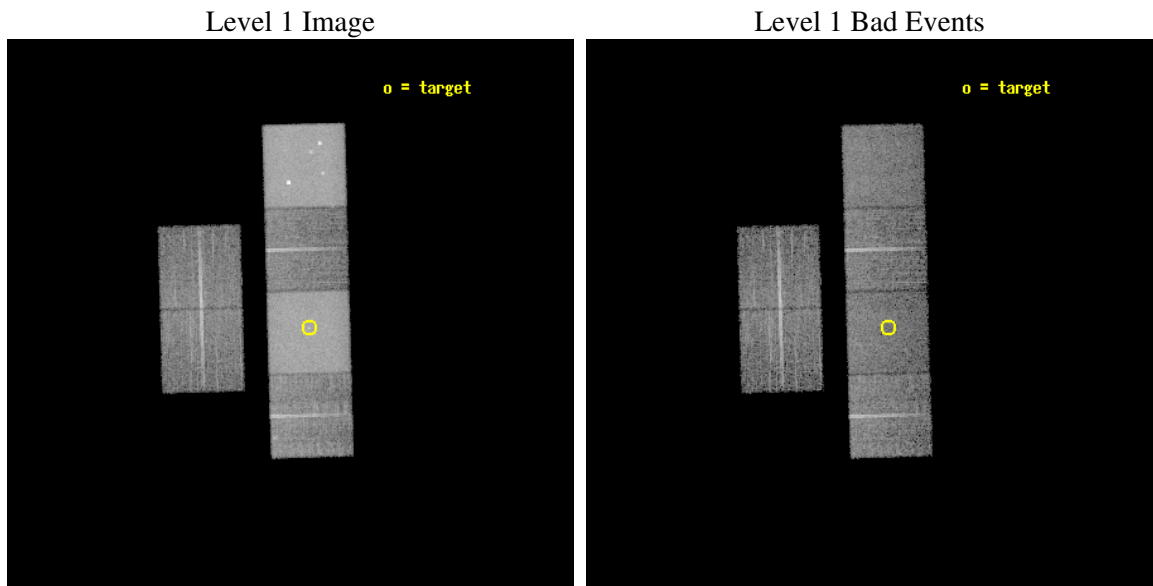
2.5.3 Slot 2



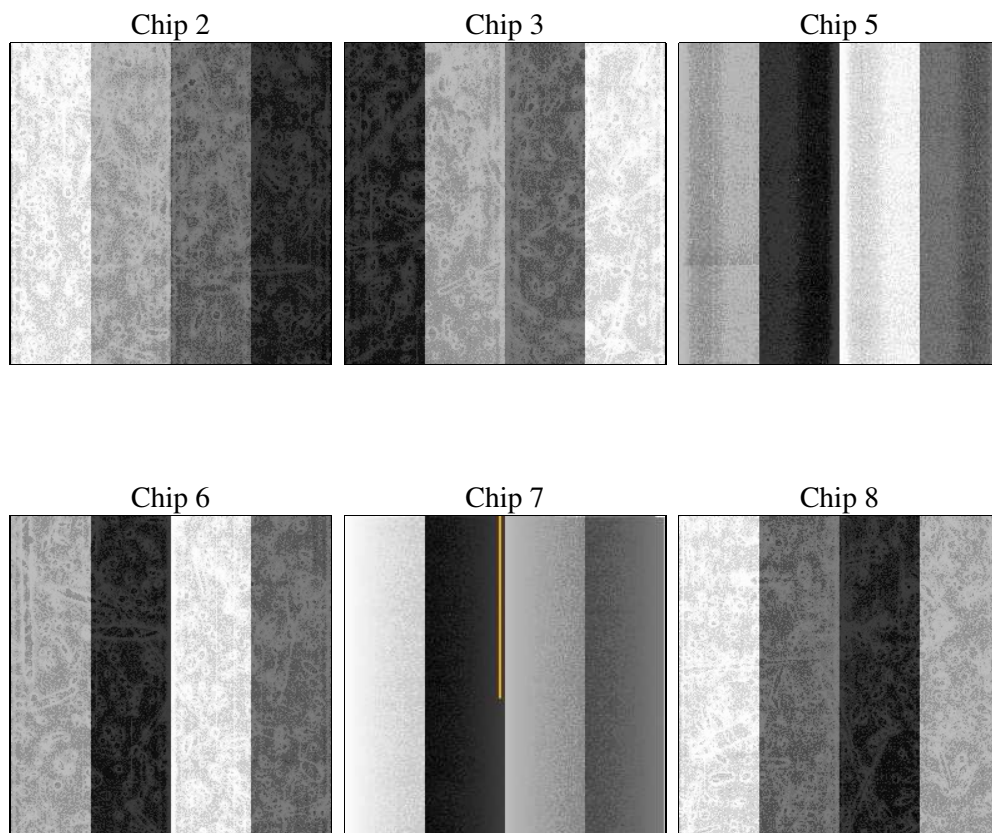
3 OBI

3.1 OBI

3.1.1 Images



3.1.2 Bias



3.1.3 Parameters

obi_num	1
ascdsver	7.6.11
caldbver	3.4.0
date	2007-07-24T01:38:08
revision	2

sched_exp_time	10962.363000
ontime	10912.000010163
ontime2	10912.000010163
ontime3	10912.000010163
ontime5	10912.000010163
ontime6	10908.759029999
ontime7	10912.000010163
ontime8	10912.000010163
l1events	618337

3.1.4 Events

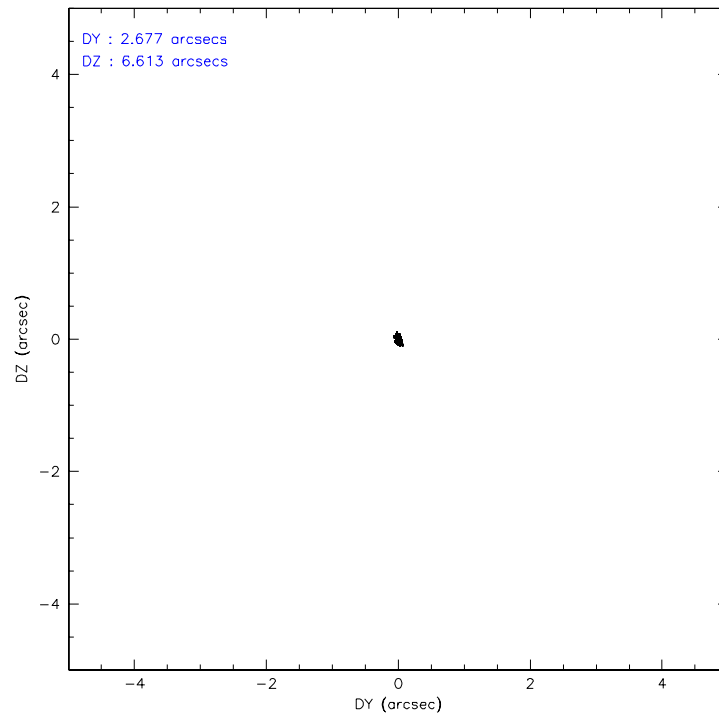
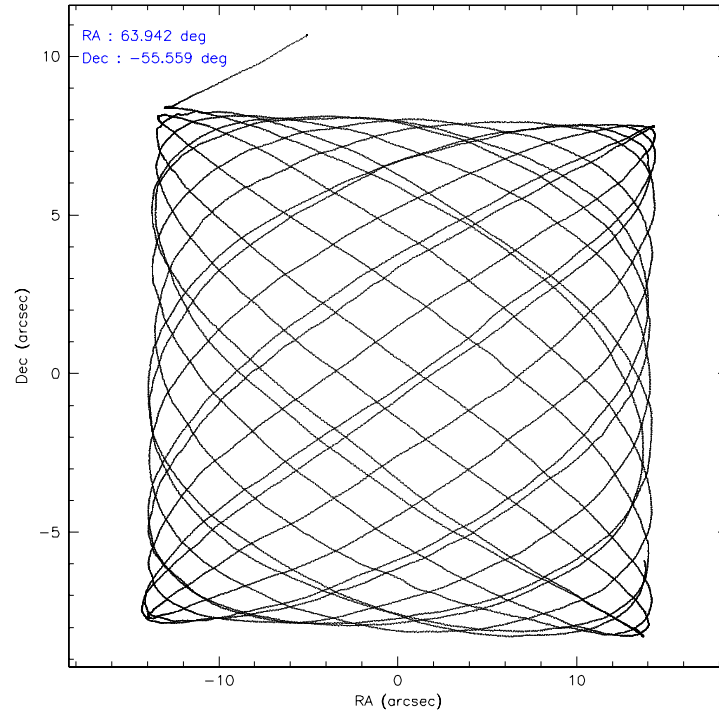
	ccd 2	ccd 3	ccd 5	ccd 6	ccd 7	ccd 8
level 1 events	68088	67965	169226	70577	155806	86675
rejected events	57778	57579	56238	58074	50913	64539
rejected %	84%	84%	33%	82%	32%	74%

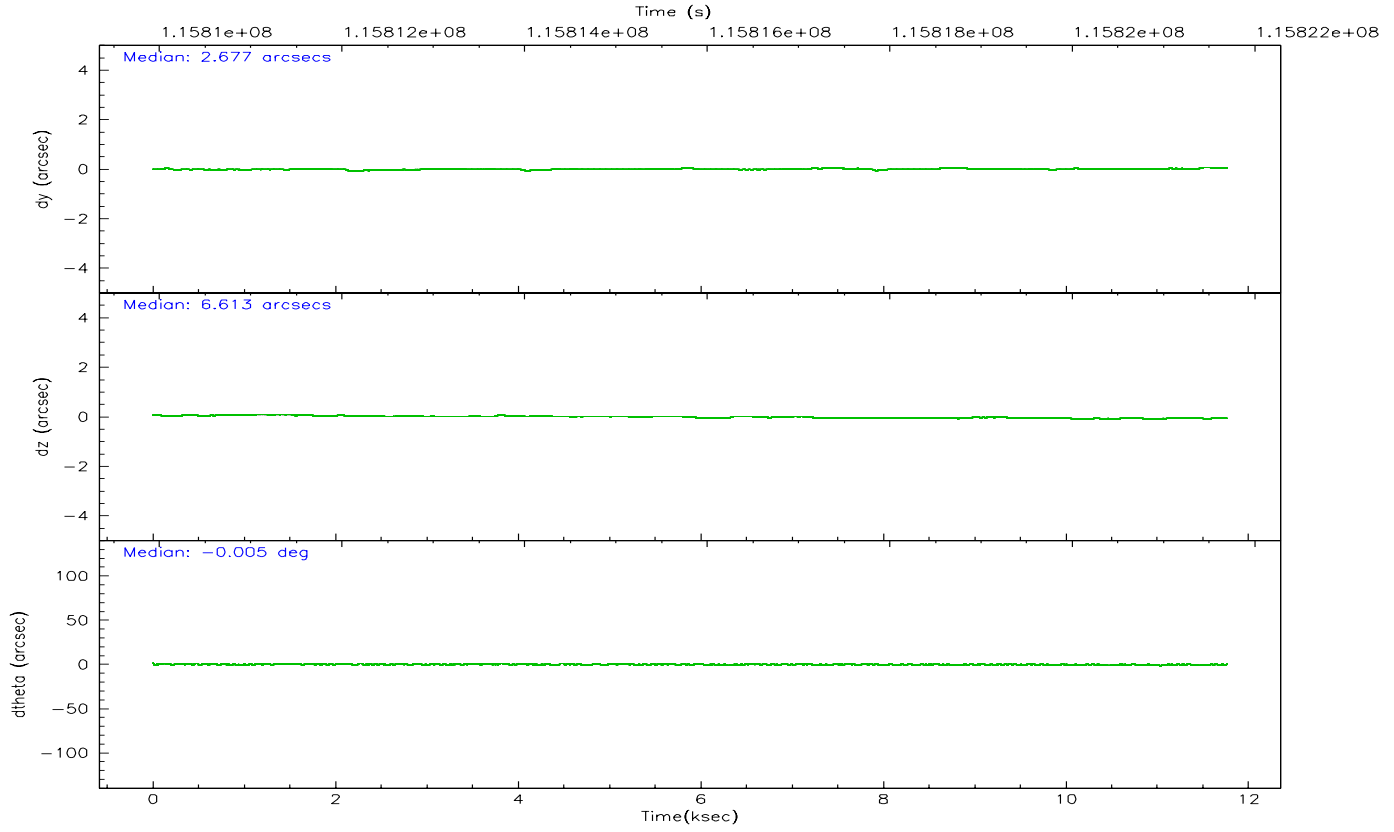
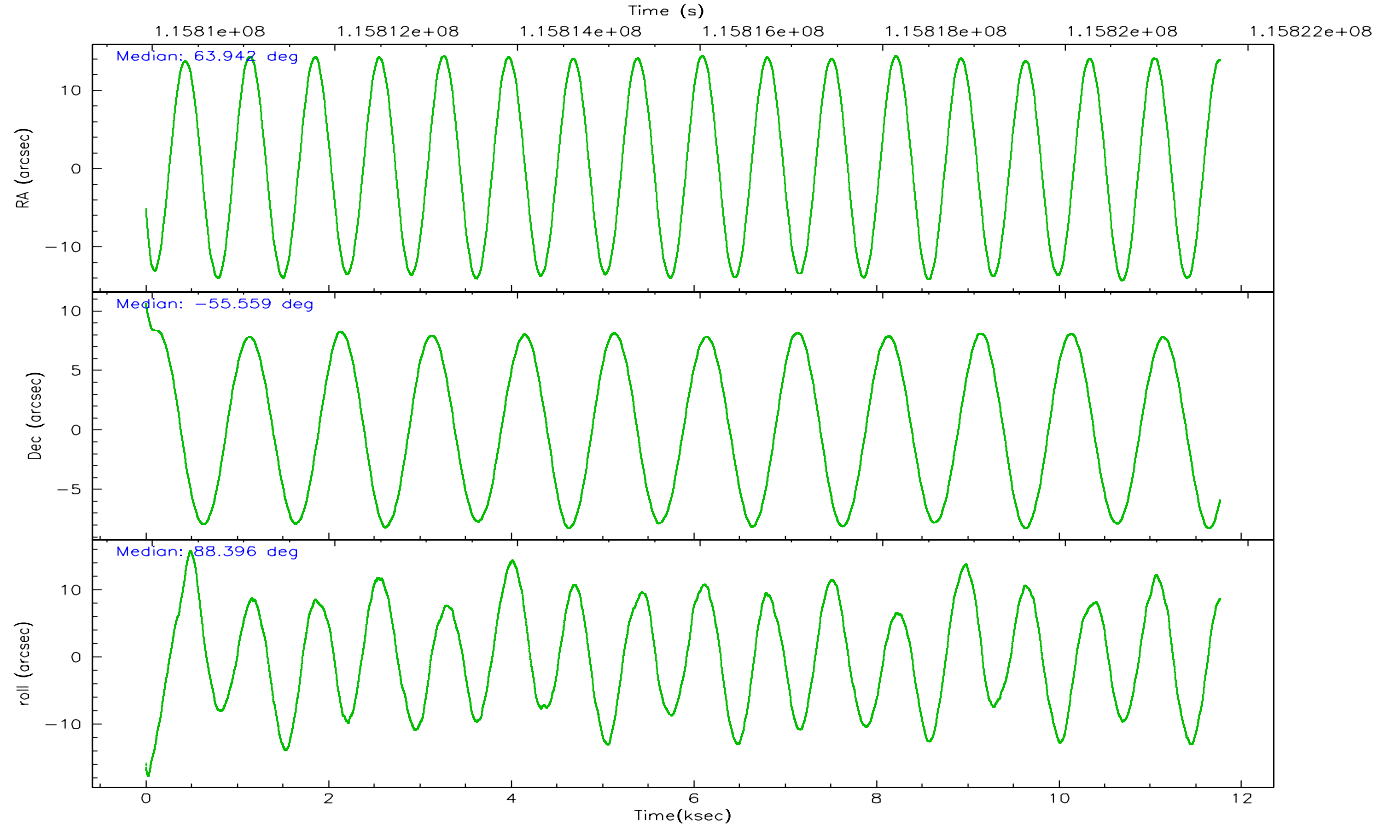
	ccd 2	ccd 3	ccd 5	ccd 6	ccd 7	ccd 8
grade 0 events	5293	5381	21109	6988	13226	9301
	7%	7%	12%	9%	8%	10%
grade 1 events	41	31	171	40	94	57
	0%	0%	0%	0%	0%	0%
grade 2 events	2019	1800	30819	2055	19500	4199
	2%	2%	18%	2%	12%	4%
grade 3 events	774	864	6545	862	8865	2053
	1%	1%	3%	1%	5%	2%
grade 4 events	769	794	6577	868	8811	1987
	1%	1%	3%	1%	5%	2%
grade 5 events	2420	2544	8017	2919	8630	3646
	3%	3%	4%	4%	5%	4%
grade 6 events	1462	1549	47997	1741	54559	4605
	2%	2%	28%	2%	35%	5%
grade 7 events	55310	55002	47991	55104	42121	60827
	81%	80%	28%	78%	27%	70%

3.2 Compared Parameters

Parameter	Planned	Actual	Parameter	Planned	Actual
Instrument	ACIS	ACIS	Obspar format version number	6	6
Detector	ACIS-235678	ACIS-235678	Obspar file type	PREDICTED	ACTUAL
Grating	NONE	NONE	Obspar update status	NONE	UPDATED
Data mode	FAINT	FAINT	On-chip summing requested	N	N
Observation mode	POINTING	POINTING	Subarray requested	NONE	NONE
Pointing RA	63.9375	63.94228688521934	Alternating exposures requested	N	N
Pointing Dec	-55.591944	-55.55874612141538	Primary exposure time	0.000000	3.2
Pointing Roll	88.263038	88.40031775999273			
SIM focus pos (mm)	-0.684267	-0.6828225247311905			
SIM defocus (mm)	0	0.001444936568705701			
SIM translation stage pos (mm)	-190.132523	-190.1425803651734			
SIM translation stage offset (mm)	0	0.01005778216563158			
Observation start time	115810731.184000	115809462.53439			
Observation start date	2001-09-02T09:37:47	2001-09-02T09:17:42			
Observation end time	115821693.184000	115822008.02238			
Observation end date	2001-09-02T12:40:29	2001-09-02T12:46:48			
Read mode	TIMED	TIMED			

3.3 Aspect



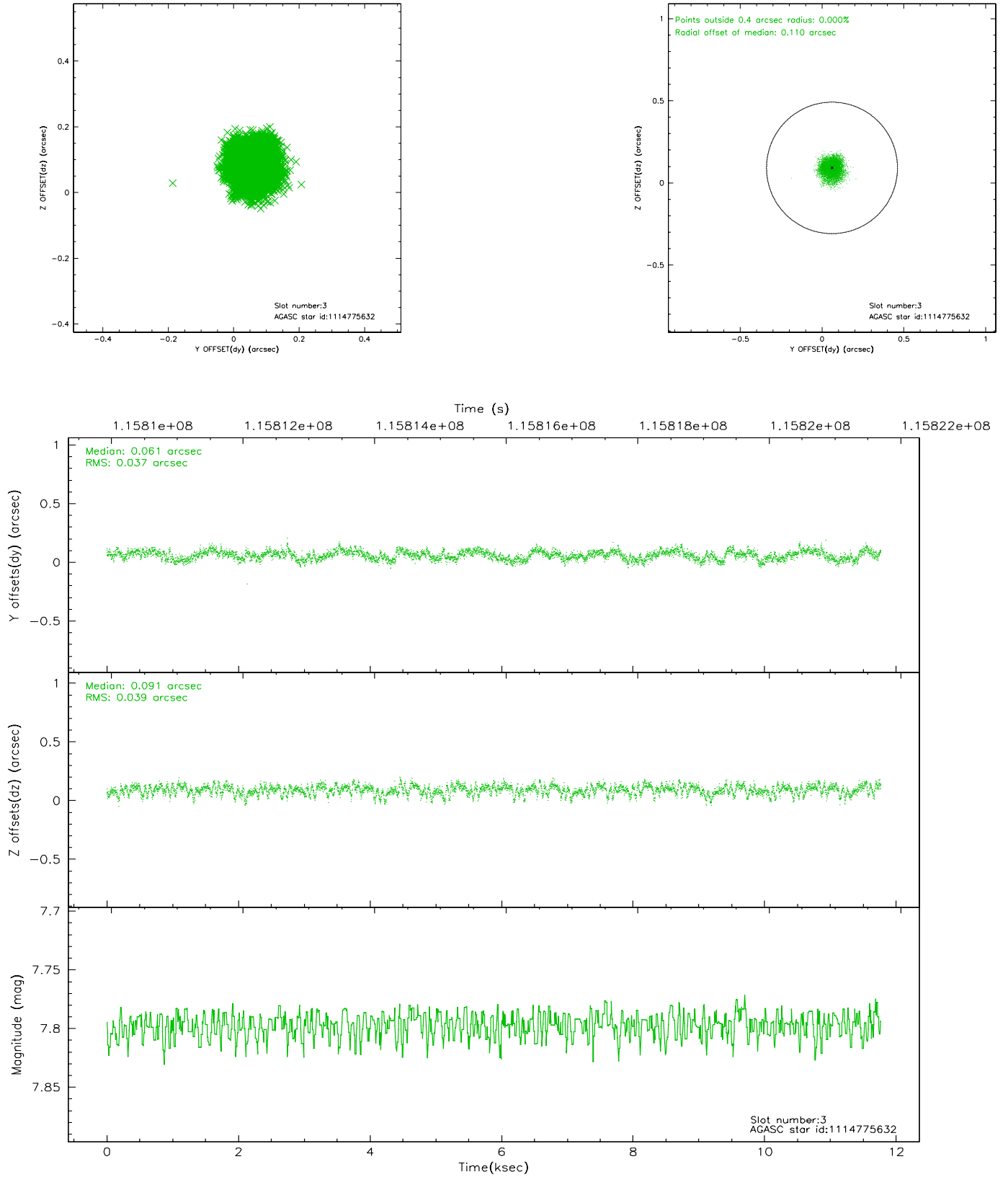


Slot Statistics

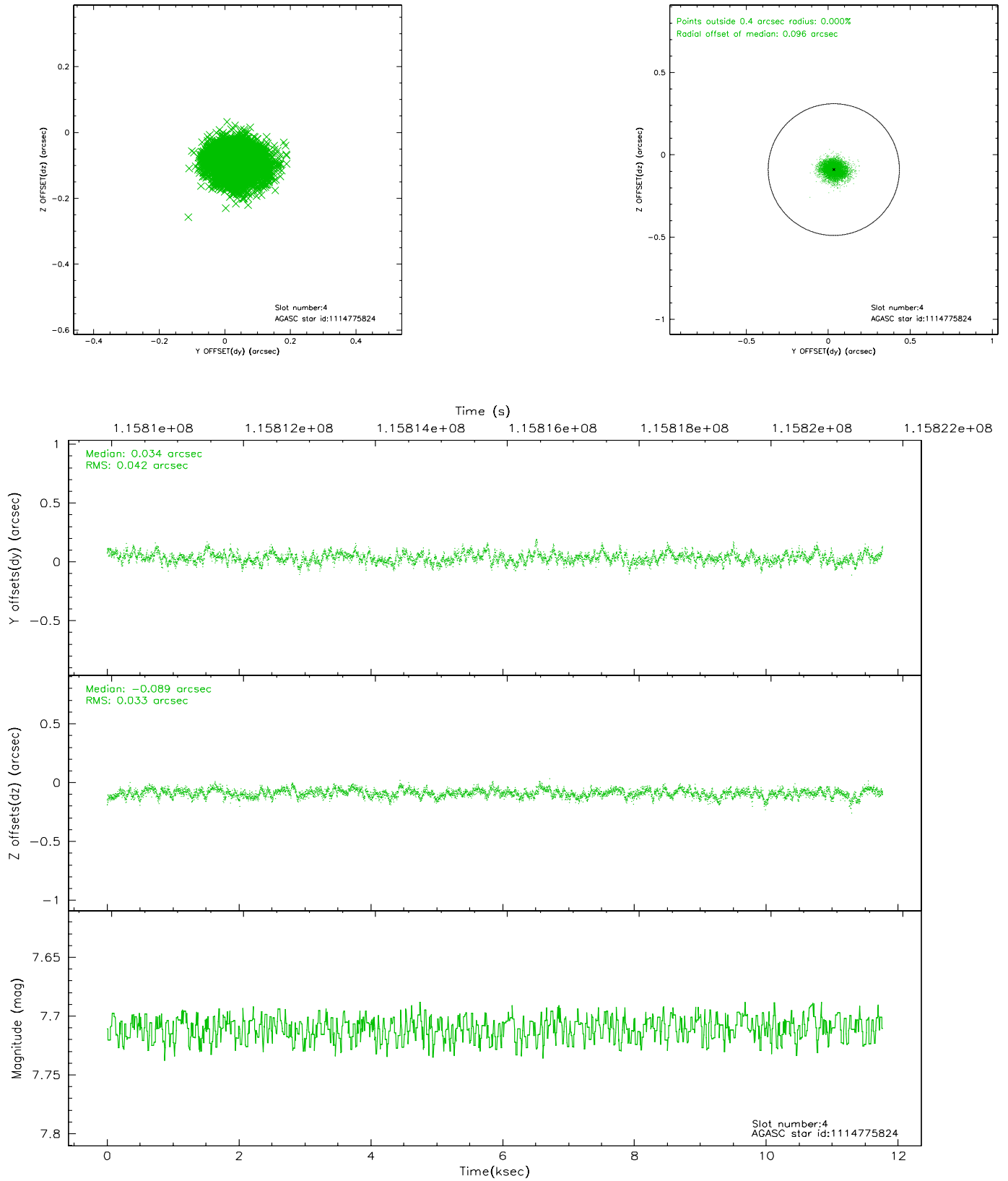
slot	status	id	mag	n_pts	med_dy	med_dz	dr1	dr2	ra	dec	mean_y	mean_z
0	FID	ACIS-S-2	7.11	6552	-0.038	0.017	0.008	0.012	0.000000	0.000000	-754.94	-1726.82
1	FID	ACIS-S-4	7.20	6550	-0.038	0.014	0.006	0.011	0.000000	0.000000	2158.26	181.62
2	FID	ACIS-S-5	7.24	6549	0.045	-0.022	0.006	0.010	0.000000	0.000000	-1807.60	175.29
3	GUIDE	1114775632	7.80	13101	-0.106	0.069	0.051	0.083	64.496457	-56.186453	293.49	-2340.22
4	GUIDE	1114775824	7.71	13103	-0.027	-0.172	0.052	0.089	63.546841	-56.176767	-1484.71	-1663.05
5	GUIDE	1114778096	8.35	13103	0.015	0.032	0.055	0.089	63.962428	-55.646331	-54.62	-144.87
6	GUIDE	1114780856	8.94	13097	-0.041	-0.098	0.073	0.118	63.289565	-55.495207	-1164.26	824.78
7	GUIDE	1114781480	10.30	13094	0.157	0.178	0.139	0.230	63.991337	-55.124059	637.29	1604.89

3.4 Star Slots

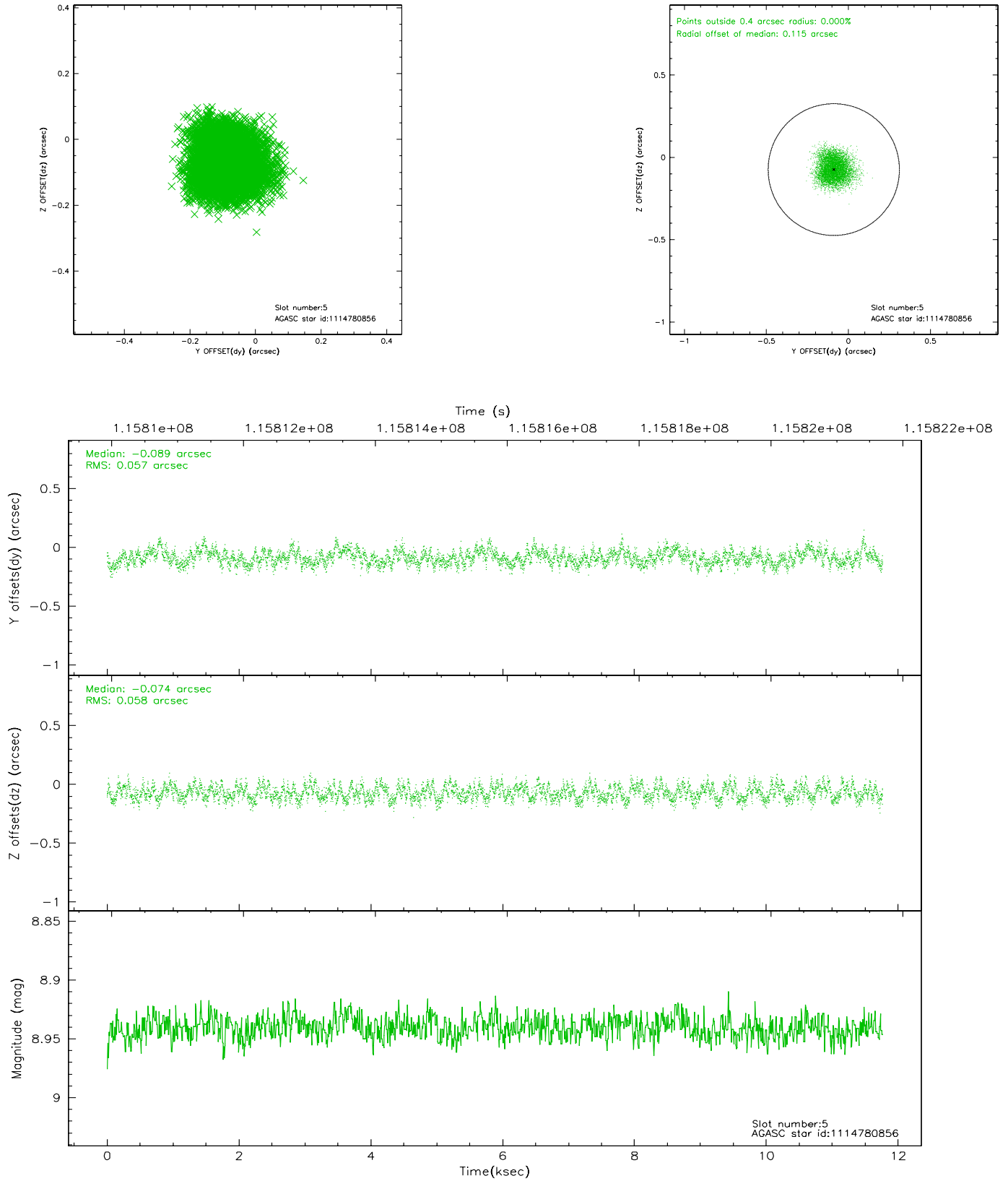
3.4.1 Slot 3



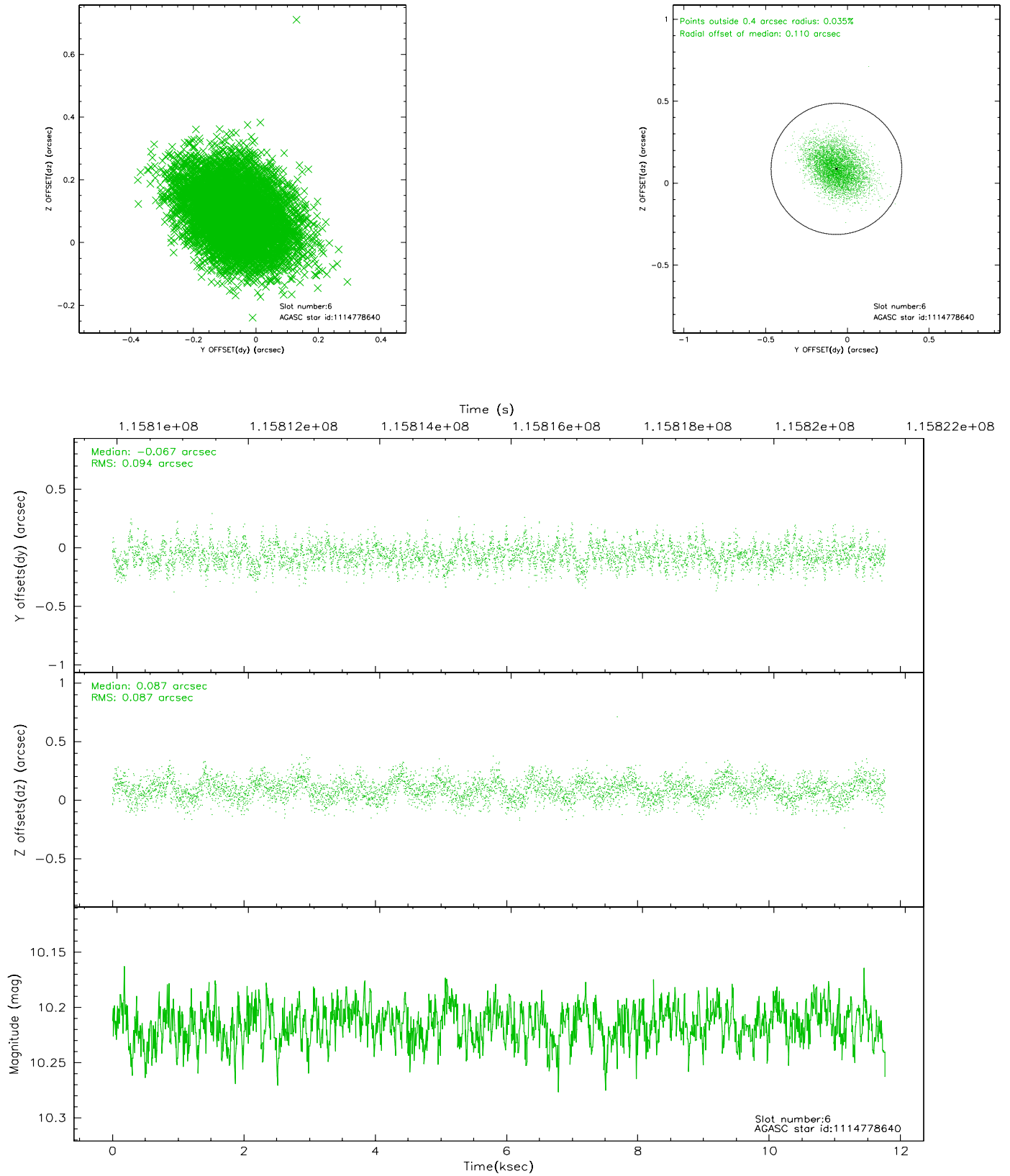
3.4.2 Slot 4



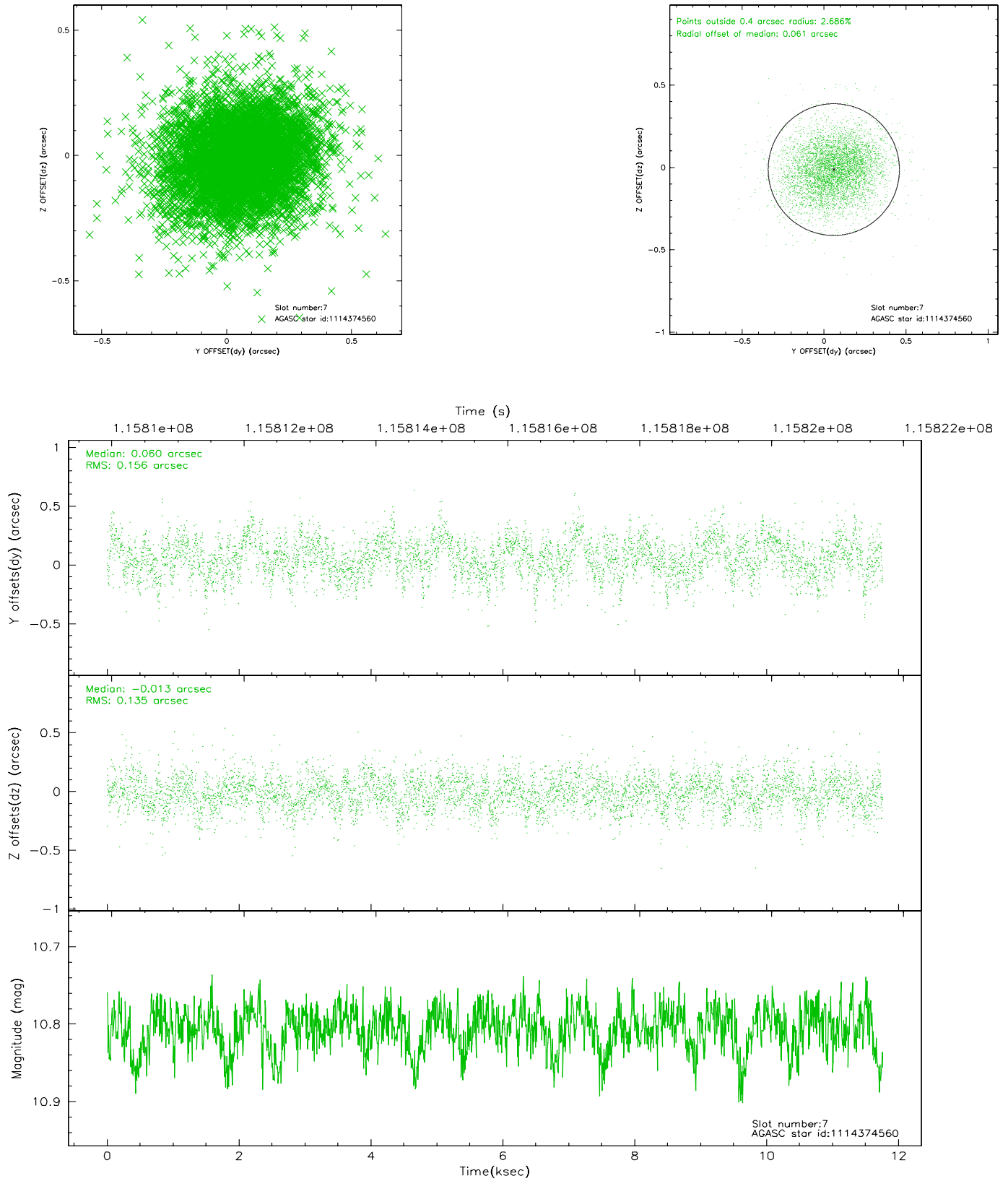
3.4.3 Slot 5



3.4.4 Slot 6

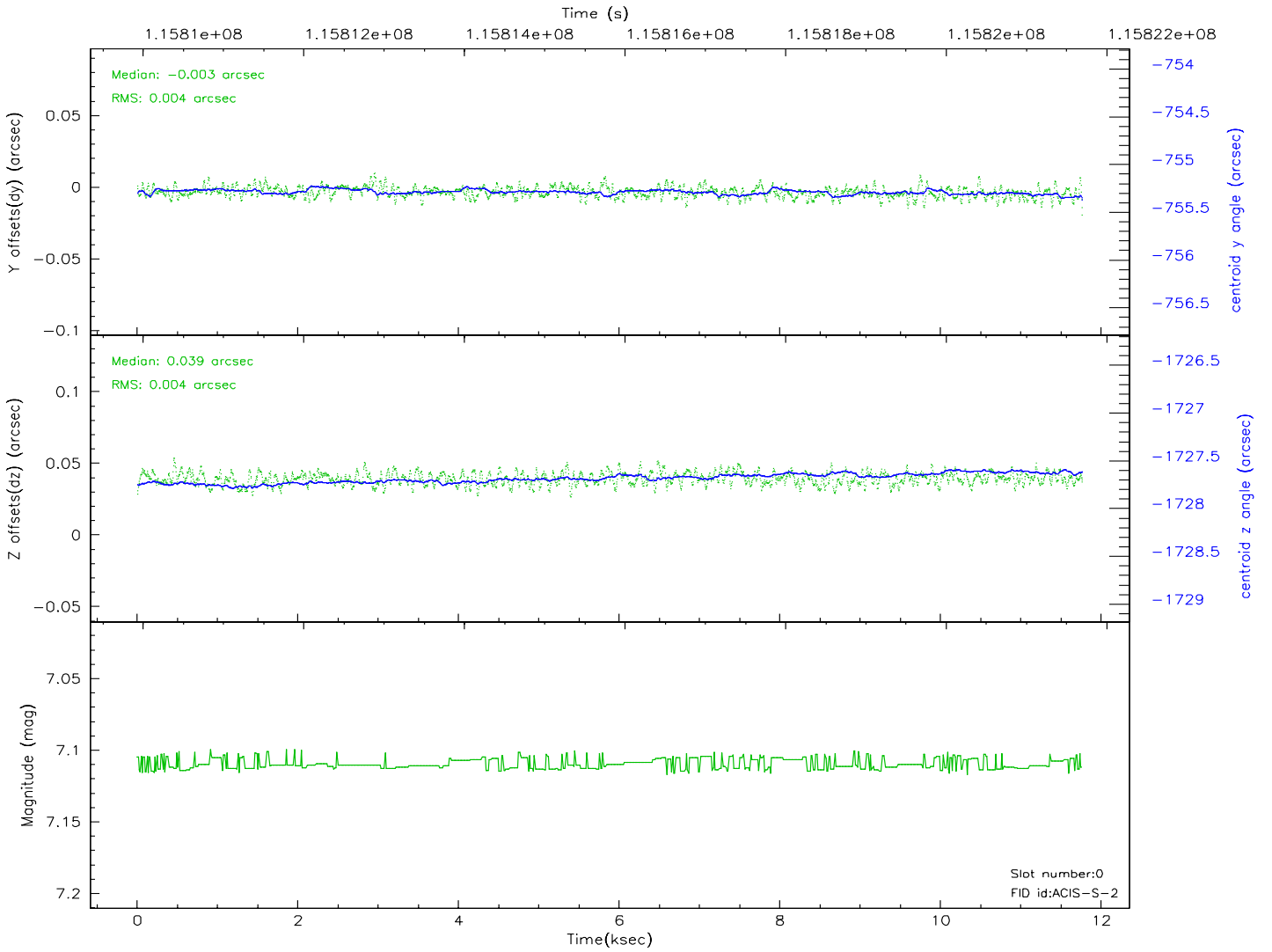
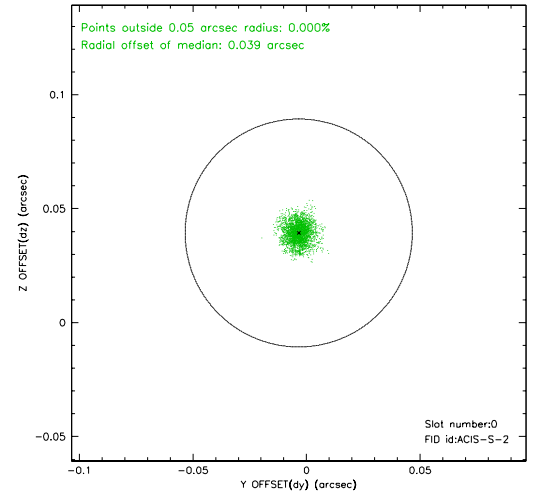
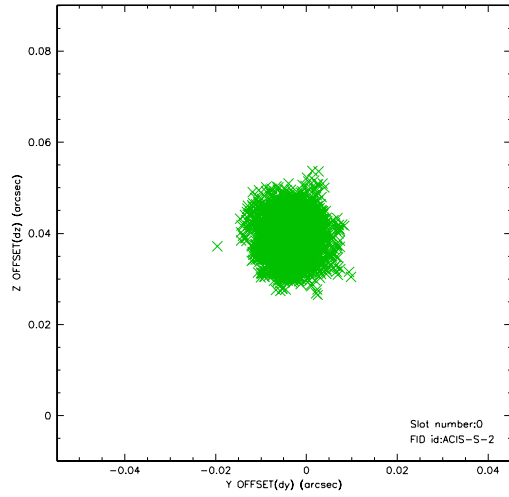


3.4.5 Slot 7

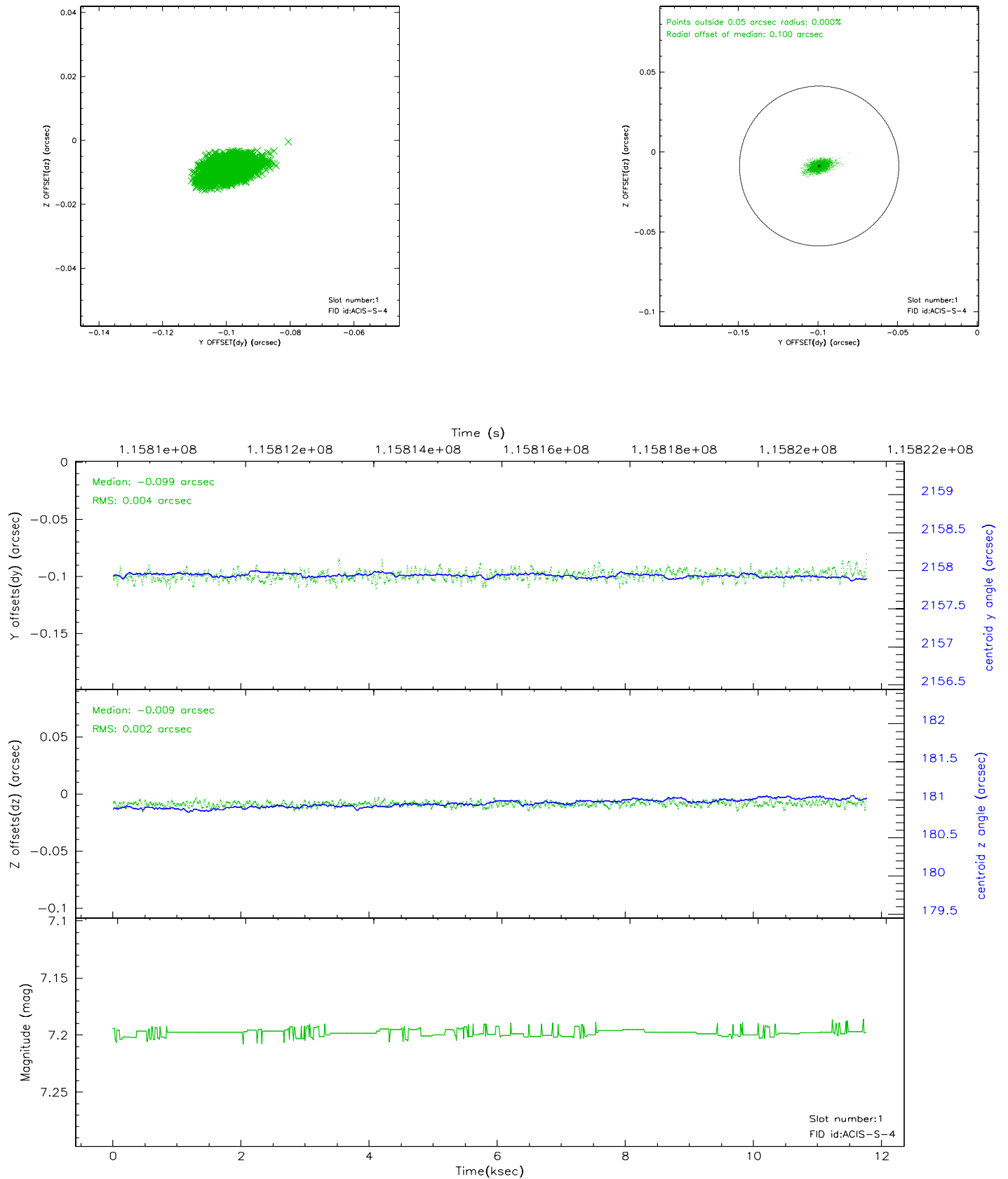


3.5 FID Slots

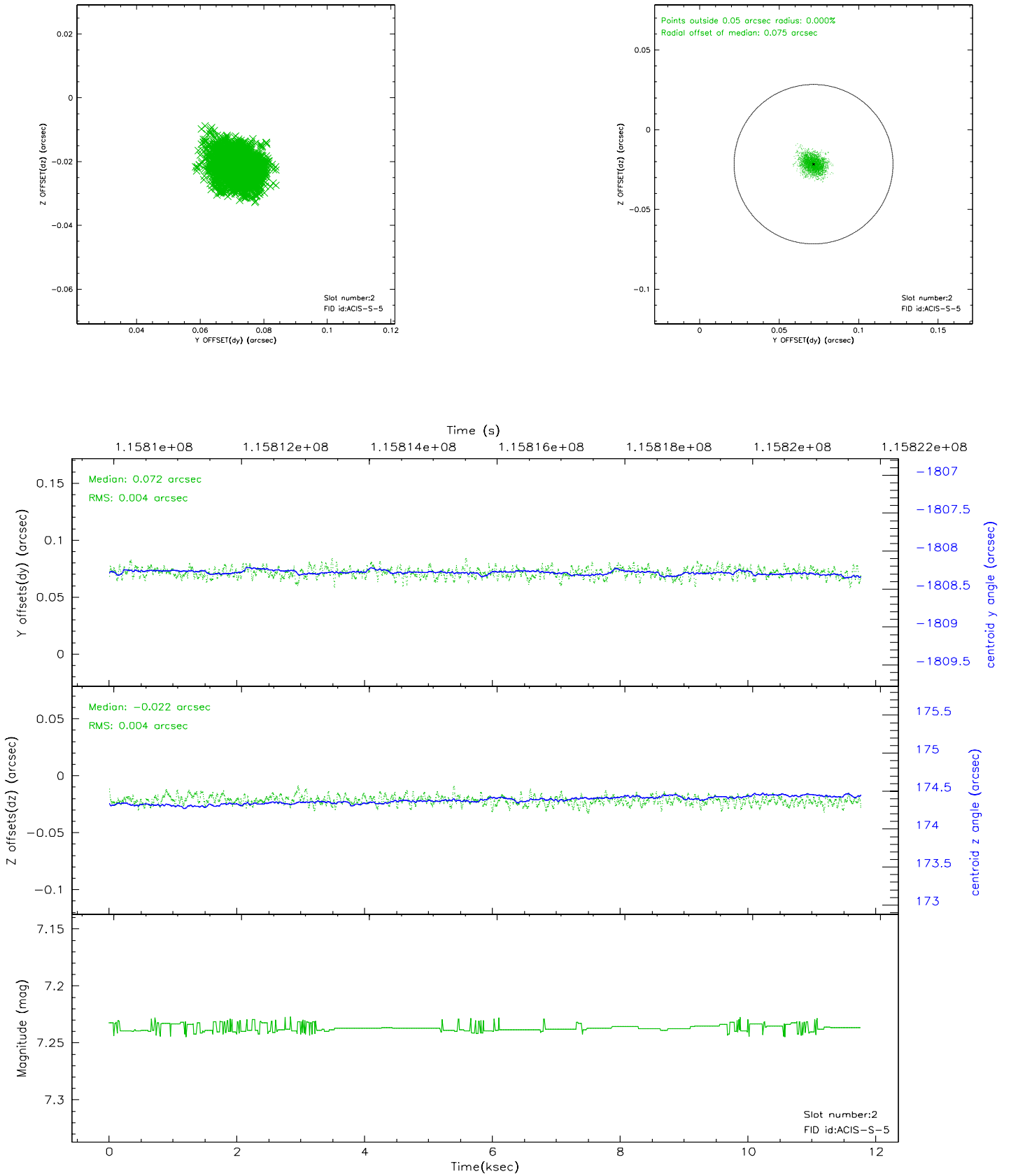
3.5.1 Slot 0



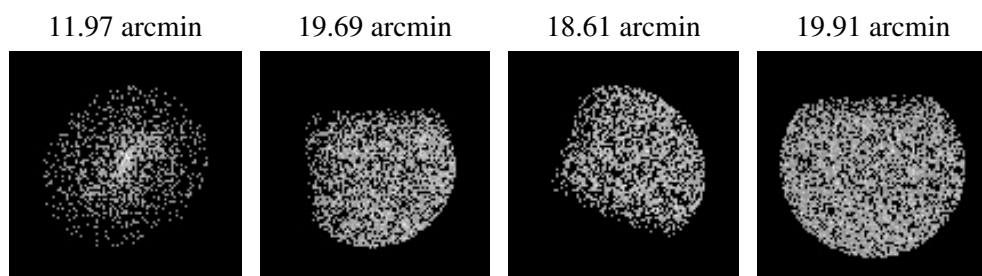
3.5.2 Slot 1



3.5.3 Slot 2



4 Point Sources



A Summary

A.1 Status

V&V Scientist	Beth Sundheim
V&V Date (YYYY-MM-DD)	2007.07.24
V&V Edition	1
V&V Disposition and Status	OK
V&V Charge Time	37.001

A.2 Comments