

# V&V Reference Report

## L2 ASCDS Version : 7.6.9

Observation 2067 - L2 Version 001  
Chandra X-Ray Center

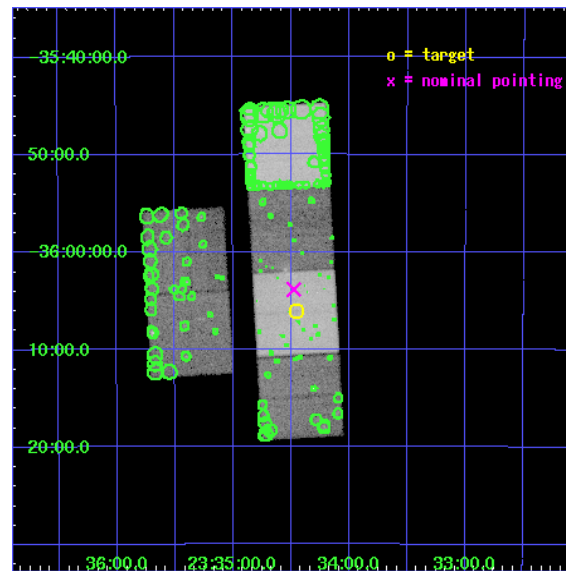
L2 Processing Date : Dec 12 2006

## Contents

<b>1</b>	<b>Front</b>	<b>2</b>
<b>2</b>	<b>OBI</b>	<b>3</b>
2.1	OBI . . . . .	3
2.1.1	Images . . . . .	3
2.1.2	Bias . . . . .	3
2.1.3	Parameters . . . . .	4
2.1.4	Events . . . . .	4
2.2	Compared Parameters . . . . .	5
2.3	Aspect . . . . .	6
2.4	Star Slots . . . . .	9
2.4.1	Slot 3 . . . . .	9
2.4.2	Slot 4 . . . . .	10
2.4.3	Slot 5 . . . . .	11
2.4.4	Slot 6 . . . . .	12
2.4.5	Slot 7 . . . . .	13
2.5	FID Slots . . . . .	14
2.5.1	Slot 0 . . . . .	14
2.5.2	Slot 1 . . . . .	15
2.5.3	Slot 2 . . . . .	16
<b>3</b>	<b>Point Sources</b>	<b>17</b>
<b>A</b>	<b>Summary</b>	<b>18</b>
A.1	Status . . . . .	18
A.2	Comments . . . . .	18

# 1 Front

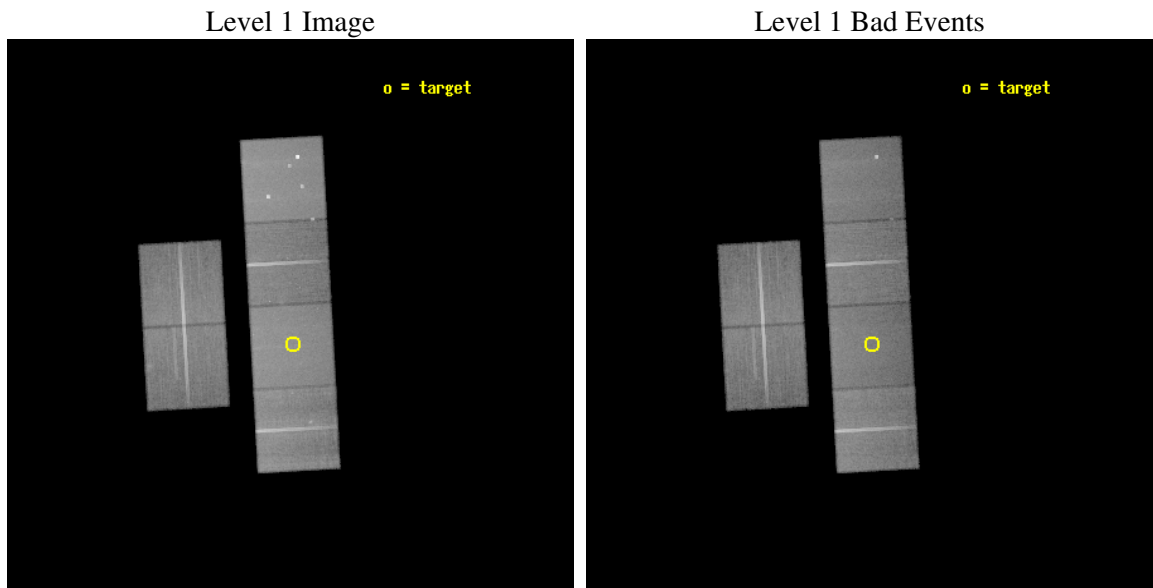
seq_num	600201
obs_id	2067
title	THE X-RAY POINT SOURCE POPULATION IN SPIRAL GALAXIES
observer	Dr. Andrea Prestwich
object	IC 5332
dtcycle	0
cycle	P
ra_targ	353.614167
dec_targ	-36.101389
ra_nom	353.61895922419
dec_nom	-36.064112305325
roll_nom	86.831428976595
revision	2
ontime	55952.000052109
livetime	55243.5021372
ontime2	55952.000052109
ontime3	55948.759091869
ontime5	55952.000052109
ontime6	55952.000052109
ontime7	55952.000052109
ontime8	55948.75908187
l2events	545580



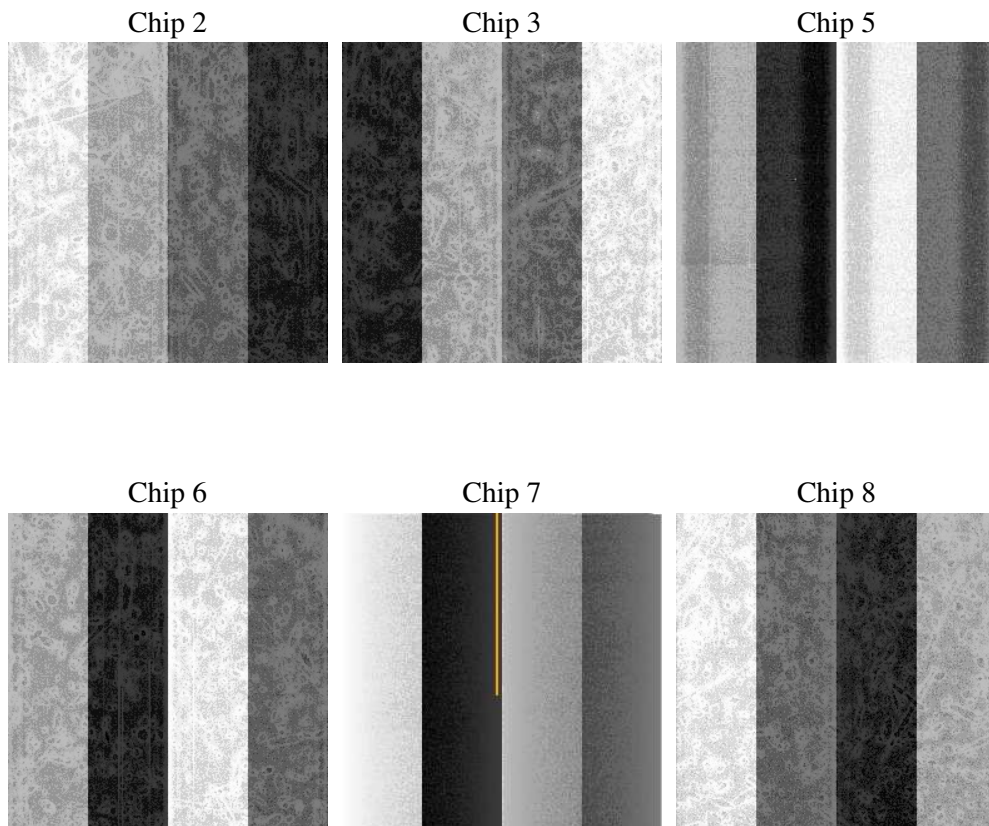
## 2 OBI

### 2.1 OBI

#### 2.1.1 Images



#### 2.1.2 Bias



### 2.1.3 Parameters

obi_num	0
ascdsver	7.6.9
caldsver	3.2.4
date	2006-12-12T02:59:08
revision	2

sched_exp_time	56200.000000
ontime	55959.08706899
ontime2	55959.08706899
ontime3	55955.84610875
ontime5	55959.08706899
ontime6	55959.08706899
ontime7	55959.08706899
ontime8	55955.845999077
l1events	2573384

### 2.1.4 Events

	ccd 2	ccd 3	ccd 5	ccd 6	ccd 7	ccd 8
level 1 events	379653	358246	529126	372261	475068	459030
rejected events	339799	317702	289732	329270	288330	367927
rejected %	89%	88%	54%	88%	60%	80%

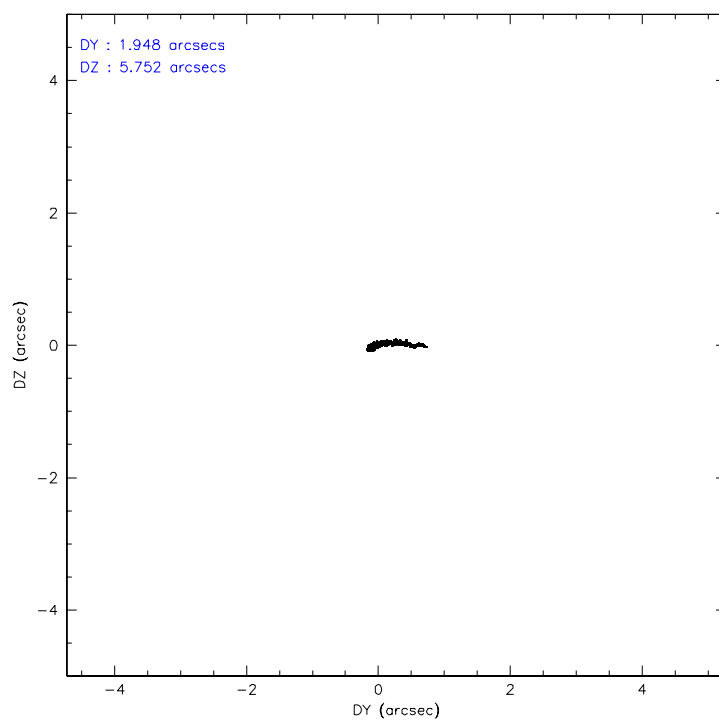
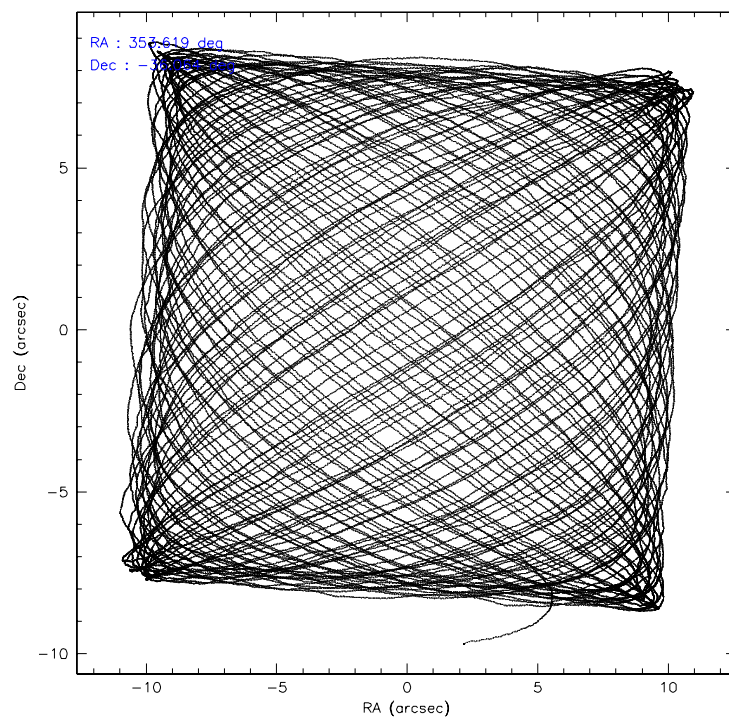
	ccd 2	ccd 3	ccd 5	ccd 6	ccd 7	ccd 8
grade 0 events	16271	17618	24145	18005	12746	29067
	4%	4%	4%	4%	2%	6%
grade 1 events	158	164	509	192	290	286
	0%	0%	0%	0%	0%	0%
grade 2 events	8851	7889	74774	8576	45471	19769
	2%	2%	14%	2%	9%	4%
grade 3 events	3844	3960	5965	4132	10335	9797
	1%	1%	1%	1%	2%	2%
grade 4 events	3781	3900	5397	4079	9769	9099
	0%	1%	1%	1%	2%	1%
grade 5 events	12701	13942	26588	15354	31687	19699
	3%	3%	5%	4%	6%	4%
grade 6 events	7110	7177	129160	8203	108442	23374
	1%	2%	24%	2%	22%	5%
grade 7 events	326937	303596	262588	313720	256328	347939
	86%	84%	49%	84%	53%	75%

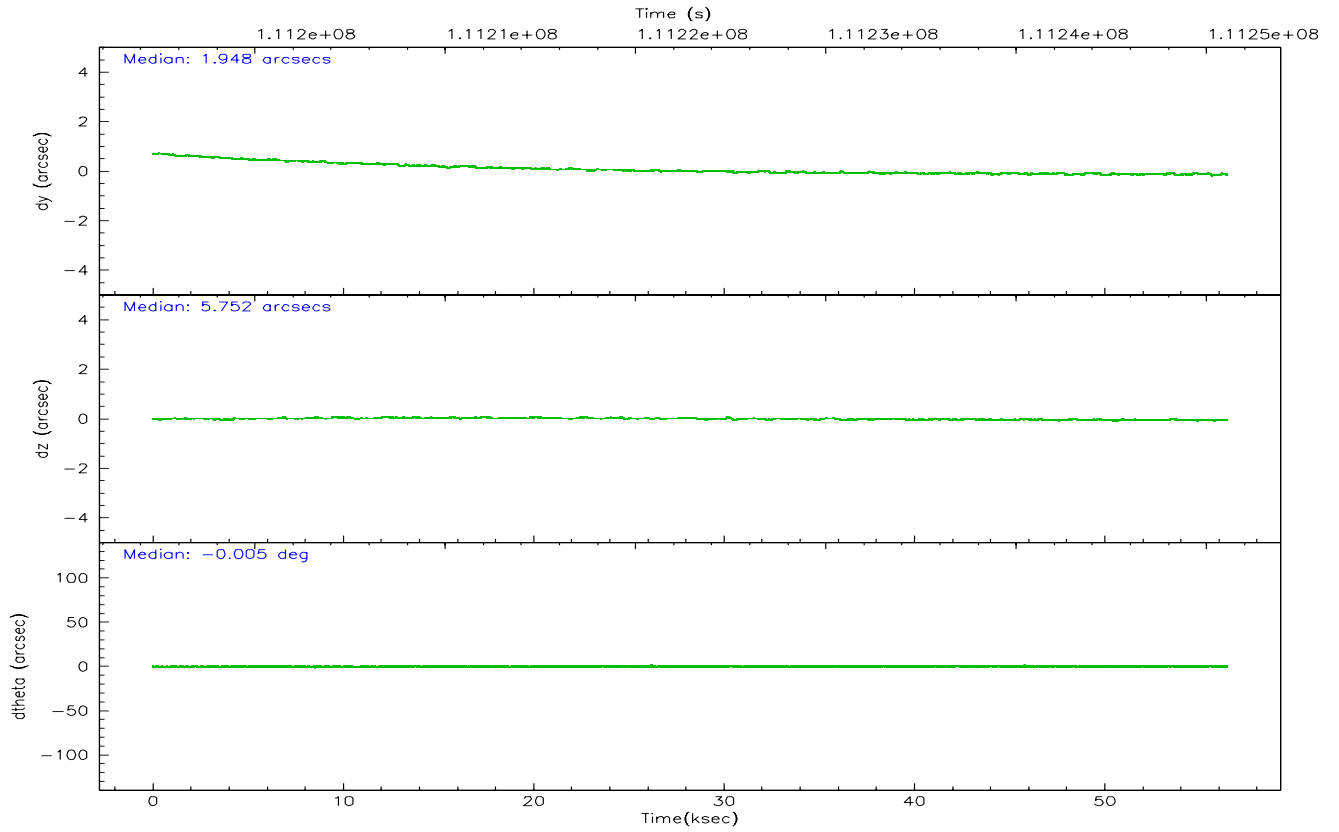
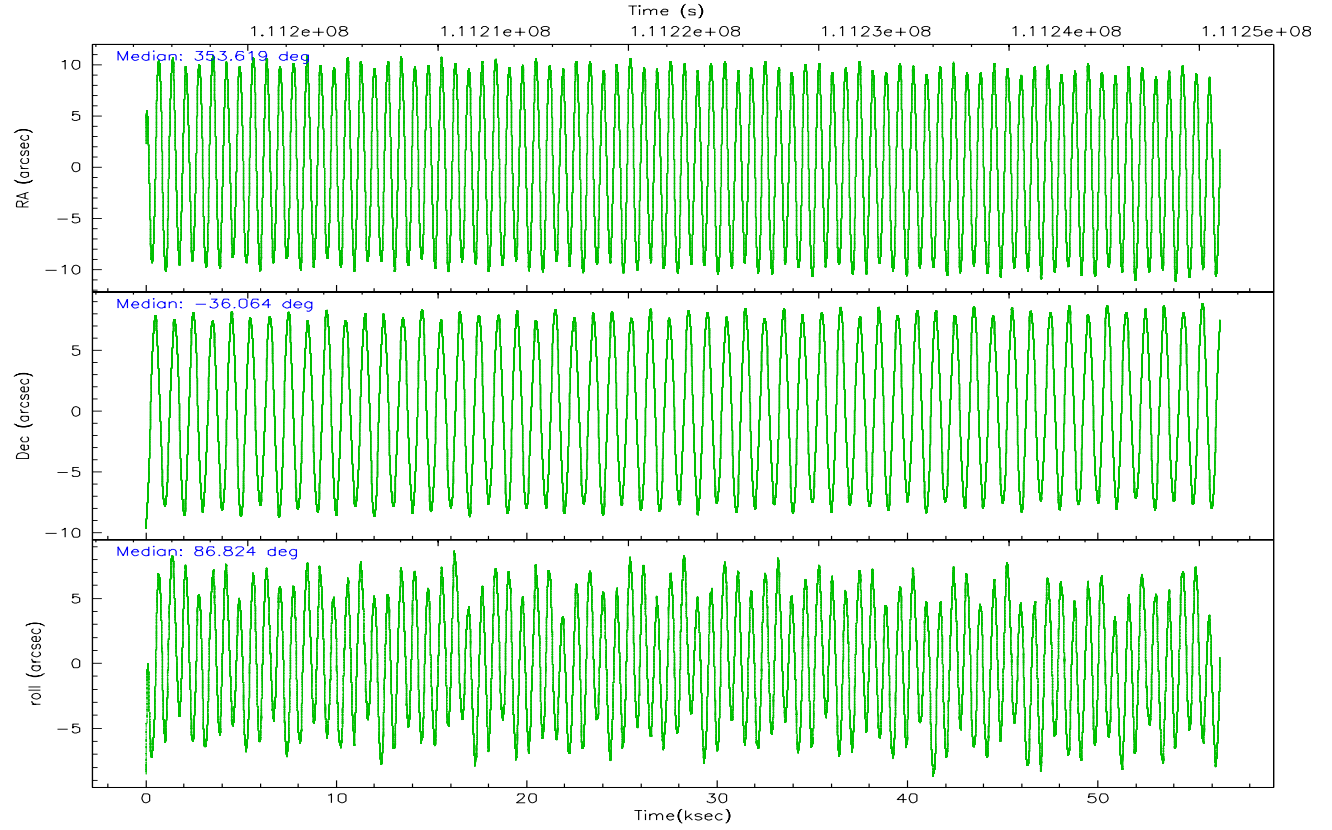


## 2.2 Compared Parameters

Parameter	Planned	Actual	Parameter	Planned	Actual
Instrument	ACIS	ACIS	Obspar format version number	6	6
Detector	ACIS-235678	ACIS-235678	Obspar file type	PREDICTED	ACTUAL
Grating	NONE	NONE	Obspar update status	NONE	UPDATED
Data mode	FAINT	FAINT	Number of optional ACIS chips dropped	0	0
Observation mode	POINTING	POINTING	On-chip summing requested	N	N
Pointing RA	353.634526	353.6189592241871	Subarray requested	NONE	NONE
Pointing Dec	-36.088317	-36.06411230532505	Alternating exposures requested	N	N
Pointing Roll	86.683969	86.83142897659457	Primary exposure time	0.000000	3.2
SIM focus pos (mm)	-0.684267	-0.6828225247311905			
SIM defocus (mm)	0	0.001444936568705701			
SIM translation stage pos (mm)	-190.132523	-190.1400660498719			
SIM translation stage offset (mm)	0	0.00754346686406393			
Observation start time	111194840.184000	111193880.17783			
Observation start date	2001-07-10T23:26:16	2001-07-10T23:11:20			
Observation end time	111251040.184000	111251393.44258			
Observation end date	2001-07-11T15:02:56	2001-07-11T15:09:53			
Read mode	TIMED	TIMED			

## 2.3 Aspect



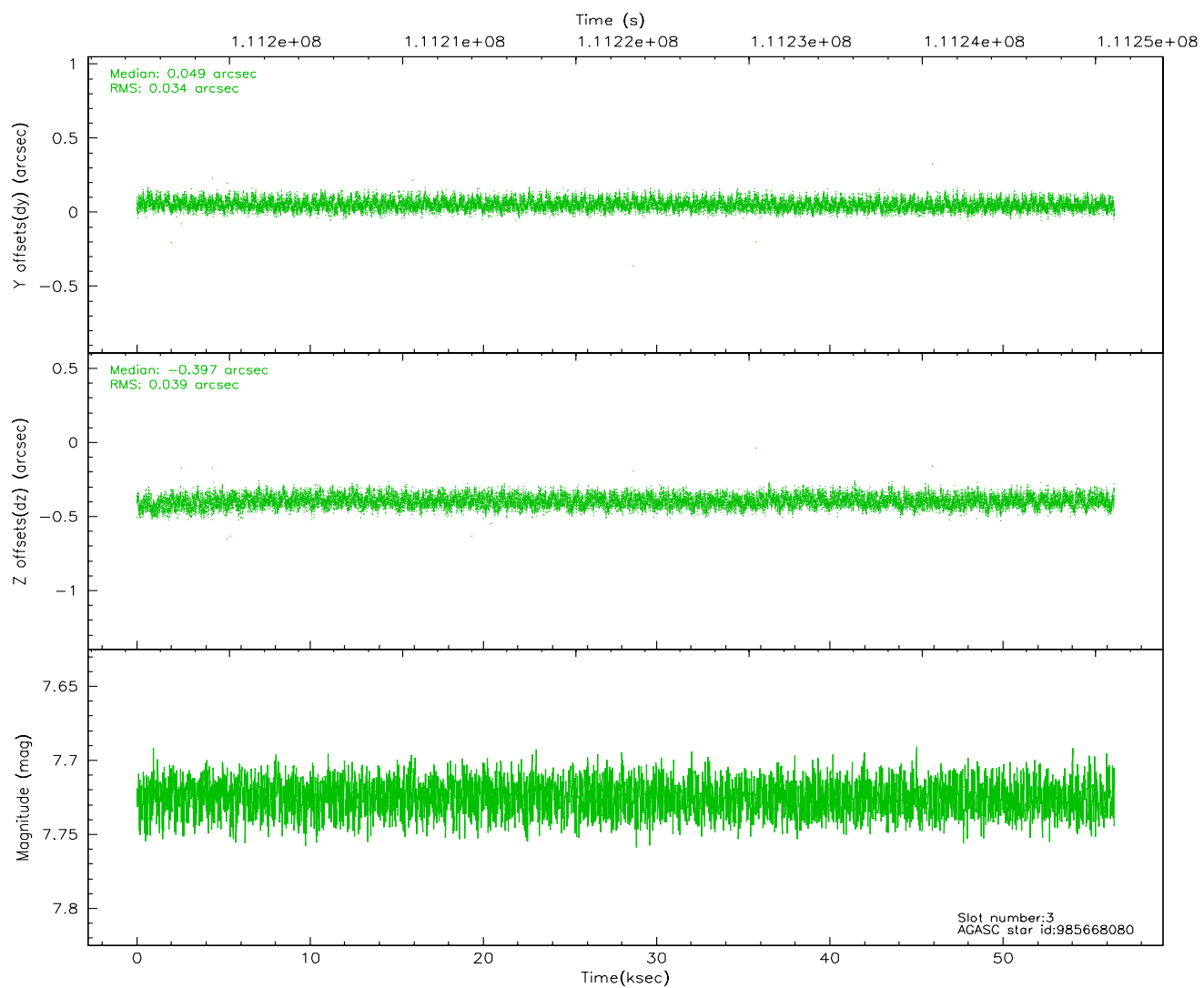
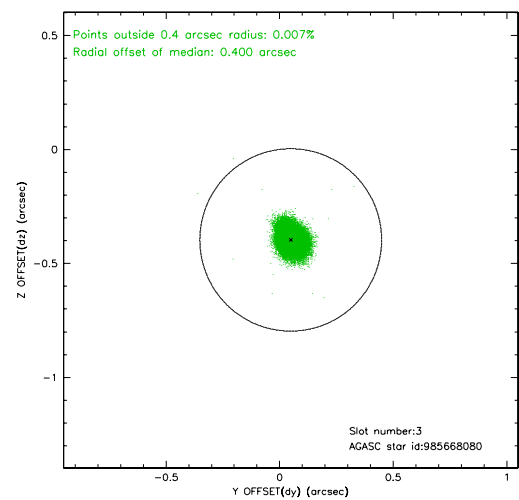
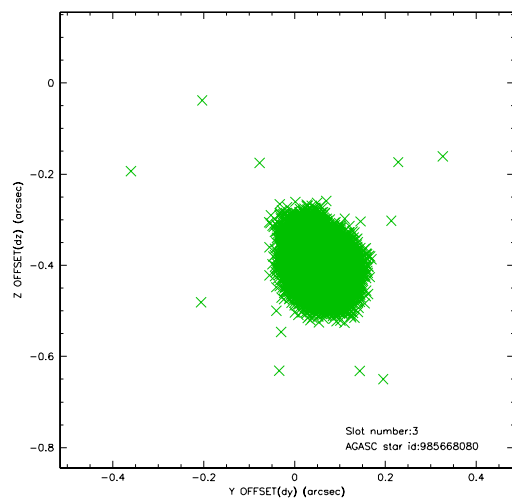


### Slot Statistics

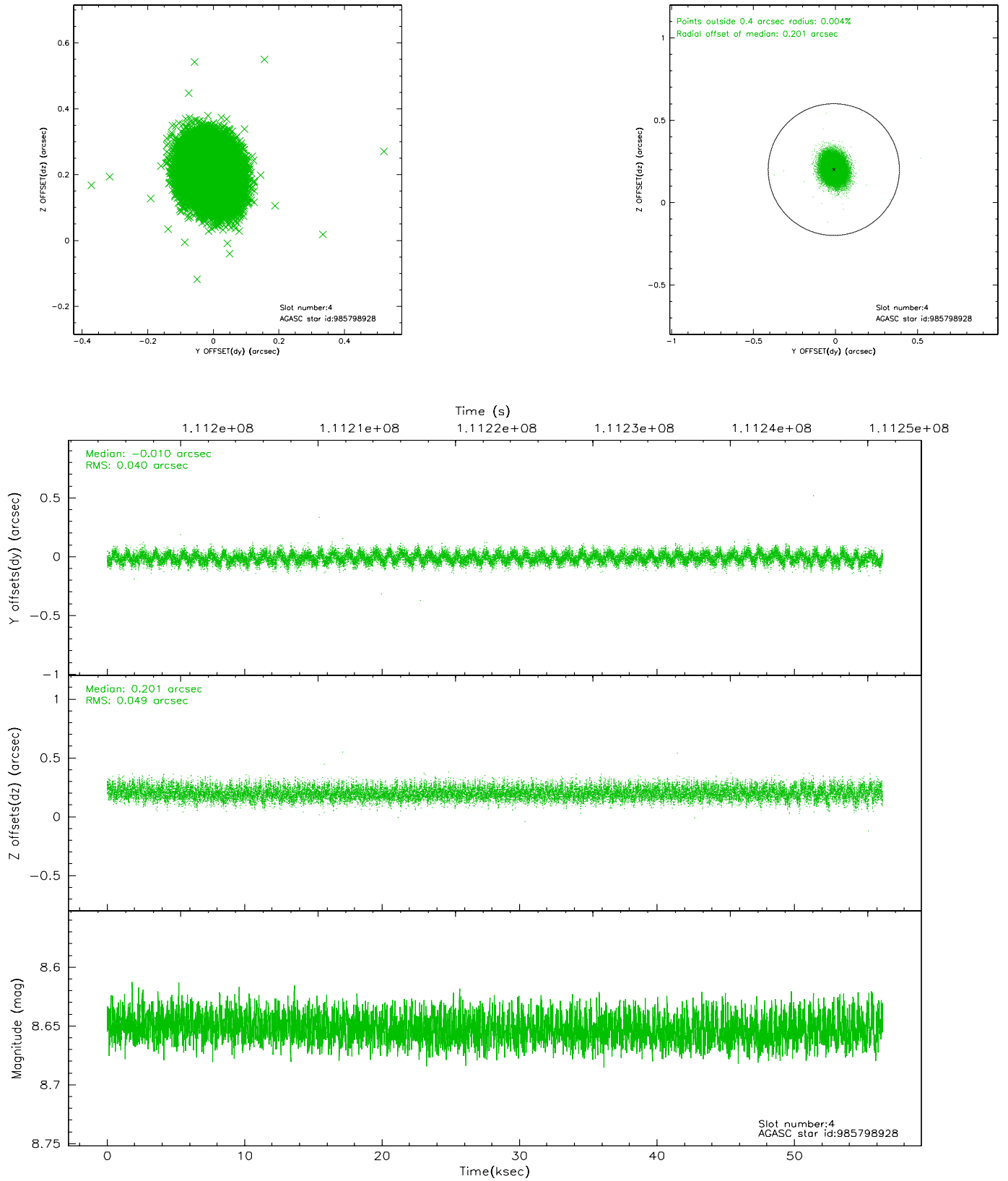
slot	status	id	mag	n_pts	med_dy	med_dz	dr1	dr2	ra	dec	mean_y	mean_z
0	FID	ACIS-S-2	7.11	13764	-0.034	0.020	0.008	0.022	0.000000	0.000000	-754.65	-1726.88
1	FID	ACIS-S-4	7.20	13764	-0.063	0.011	0.006	0.027	0.000000	0.000000	2158.57	181.69
2	FID	ACIS-S-5	7.24	13764	0.066	-0.022	0.007	0.012	0.000000	0.000000	-1807.48	175.21
3	GUIDE	985668080	7.73	27527	0.049	-0.397	0.055	0.087	352.897615	-36.291239	-861.53	2090.84
4	GUIDE	985798928	8.65	27513	-0.010	0.201	0.067	0.108	354.433472	-36.178095	-197.72	-2337.24
5	GUIDE	985802352	8.61	27518	-0.063	0.194	0.072	0.116	354.497394	-35.878313	889.42	-2470.00
6	GUIDE	985670712	8.75	27519	-0.088	-0.123	0.059	0.095	353.444604	-35.512328	2037.09	674.97
7	GUIDE	985793160	9.79	27506	0.111	0.125	0.114	0.184	354.378214	-36.659867	-1937.79	-2264.33

## 2.4 Star Slots

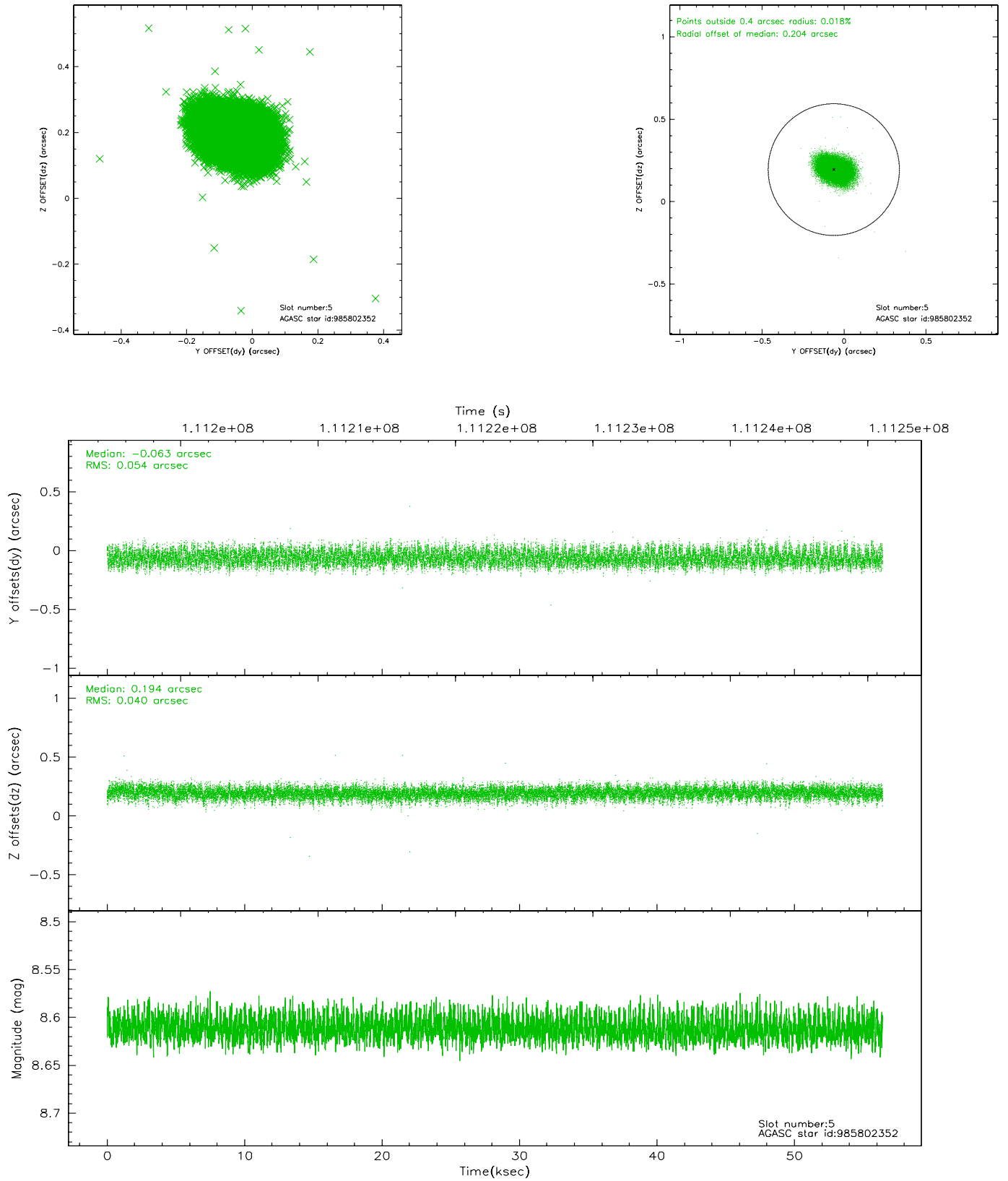
### 2.4.1 Slot 3



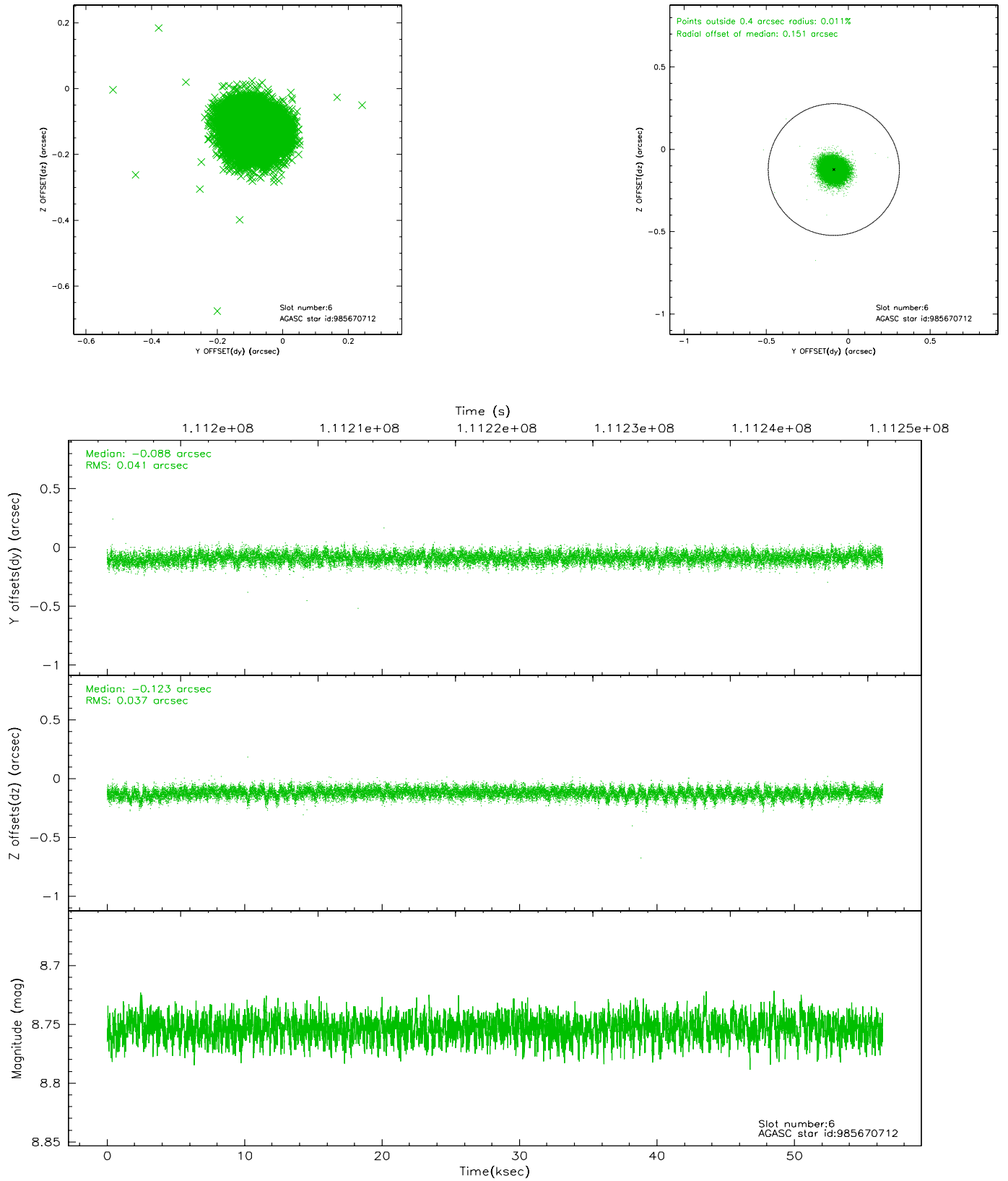
## 2.4.2 Slot 4



### 2.4.3 Slot 5

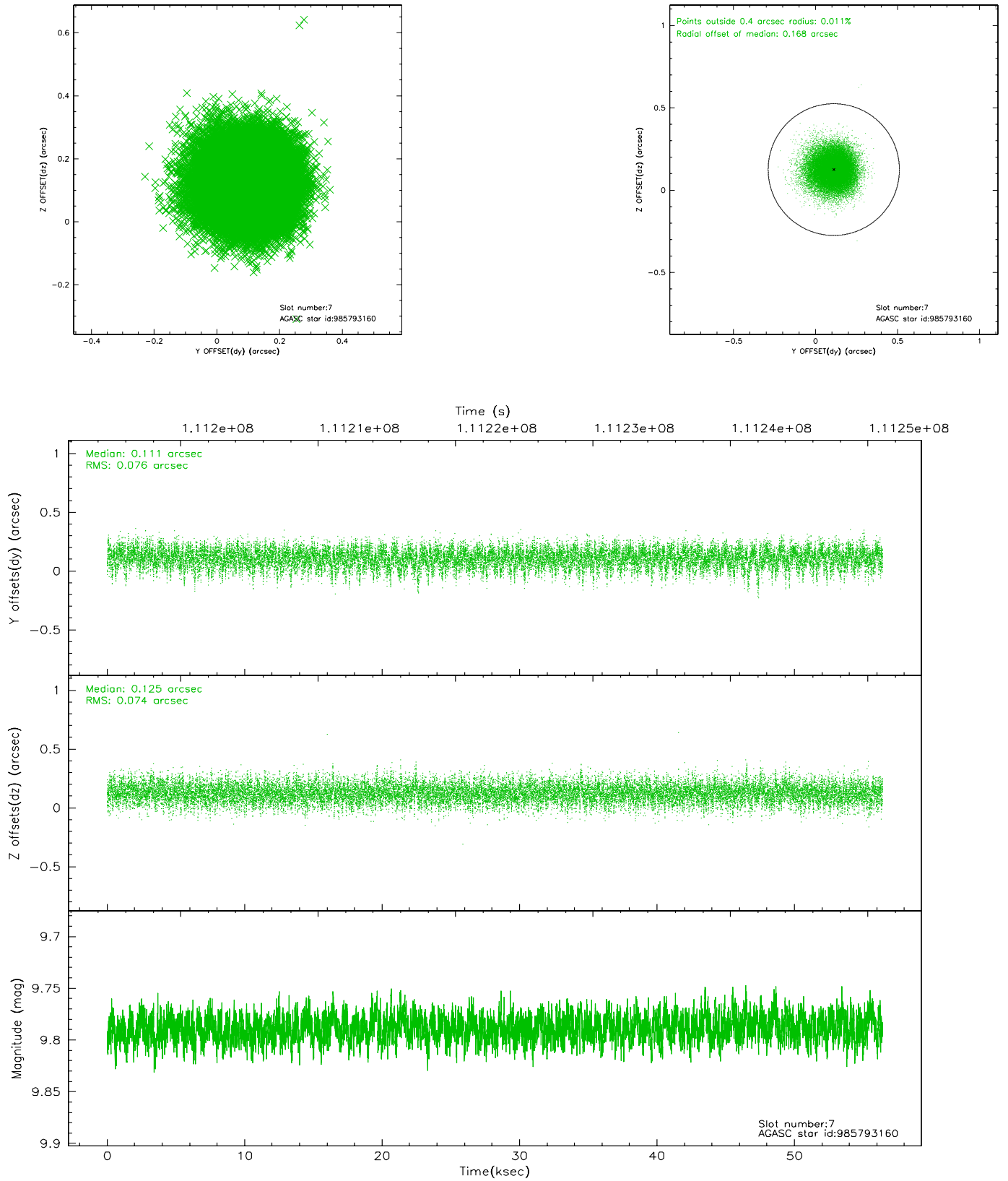


## 2.4.4 Slot 6



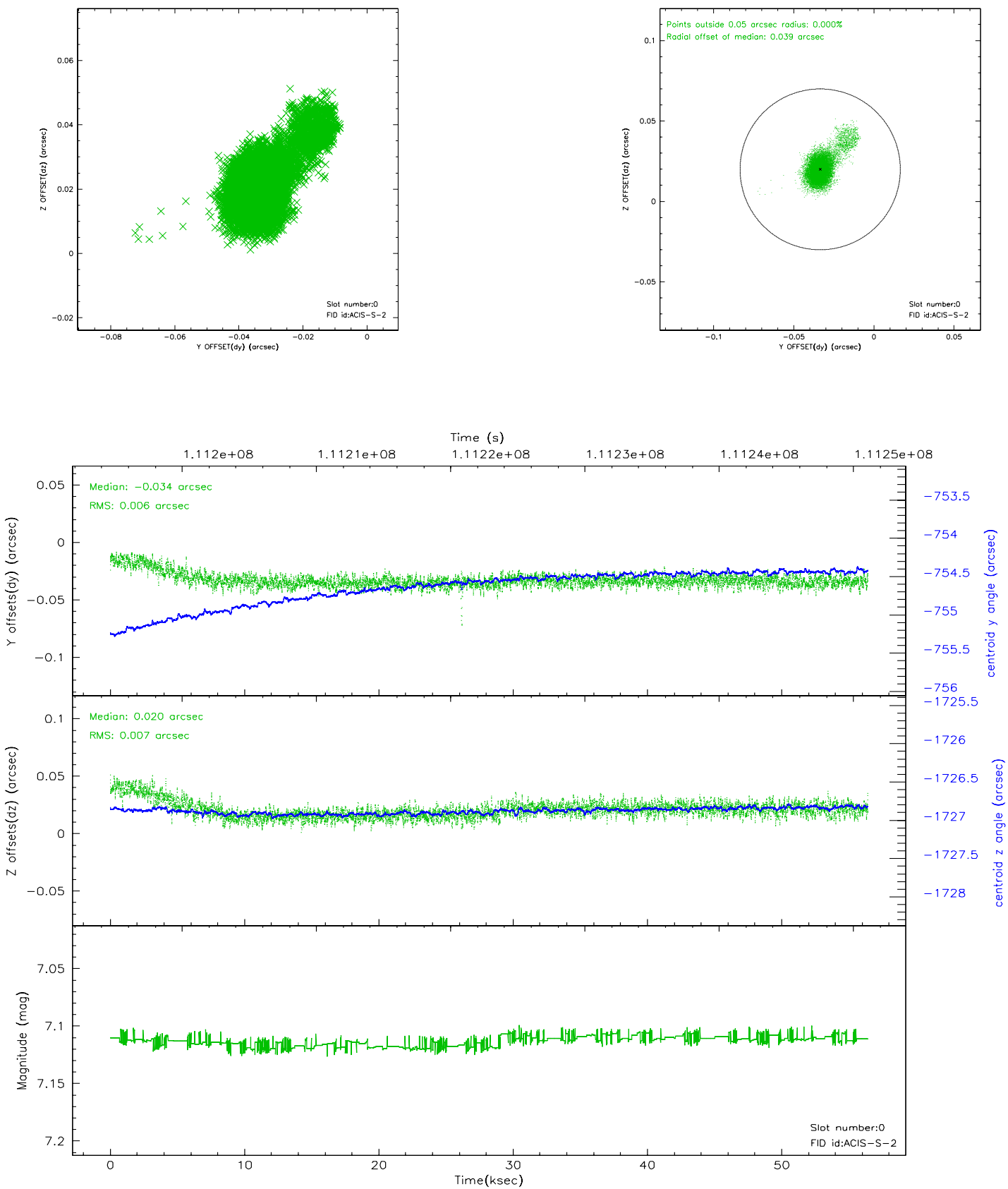


## 2.4.5 Slot 7

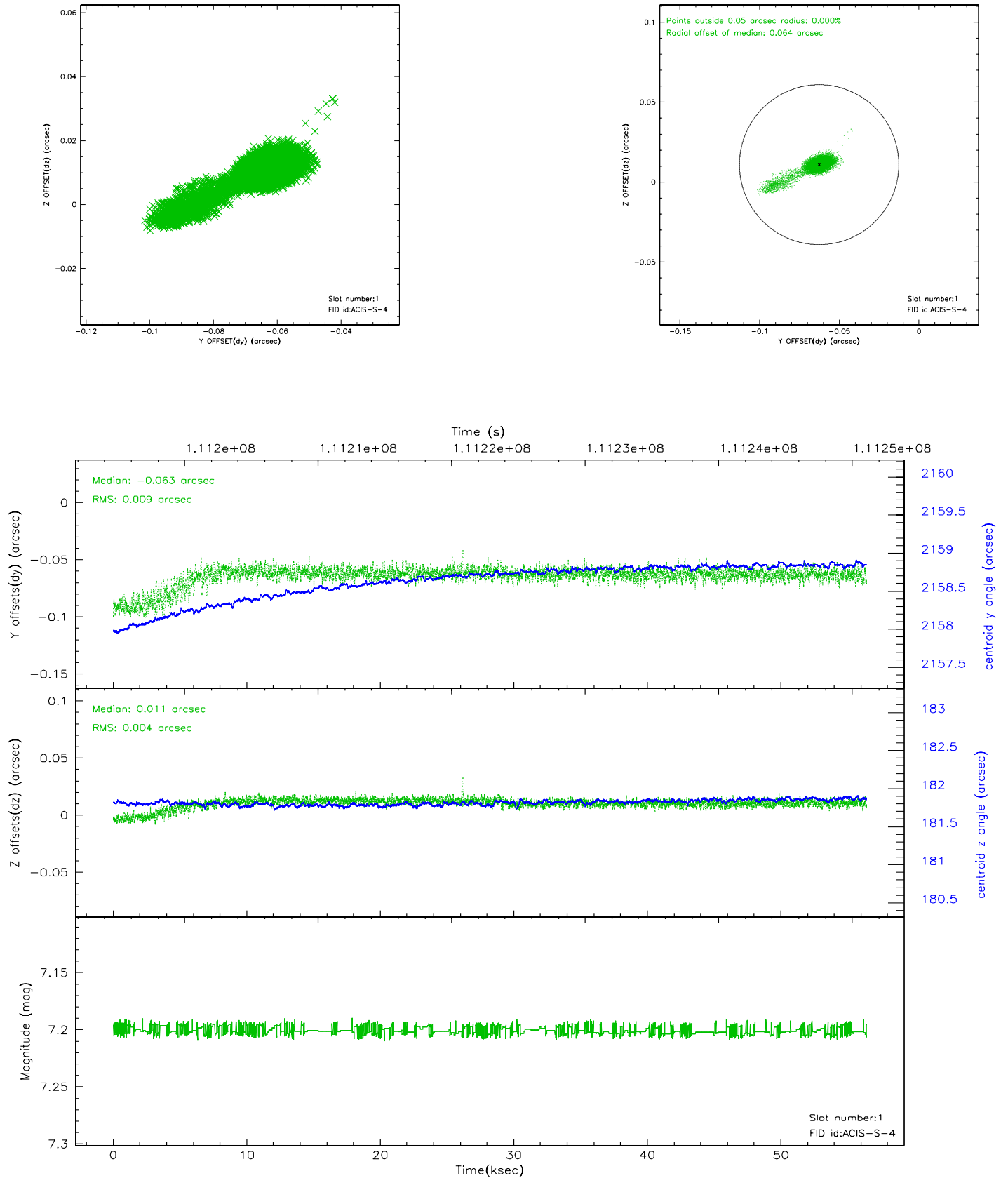


## 2.5 FID Slots

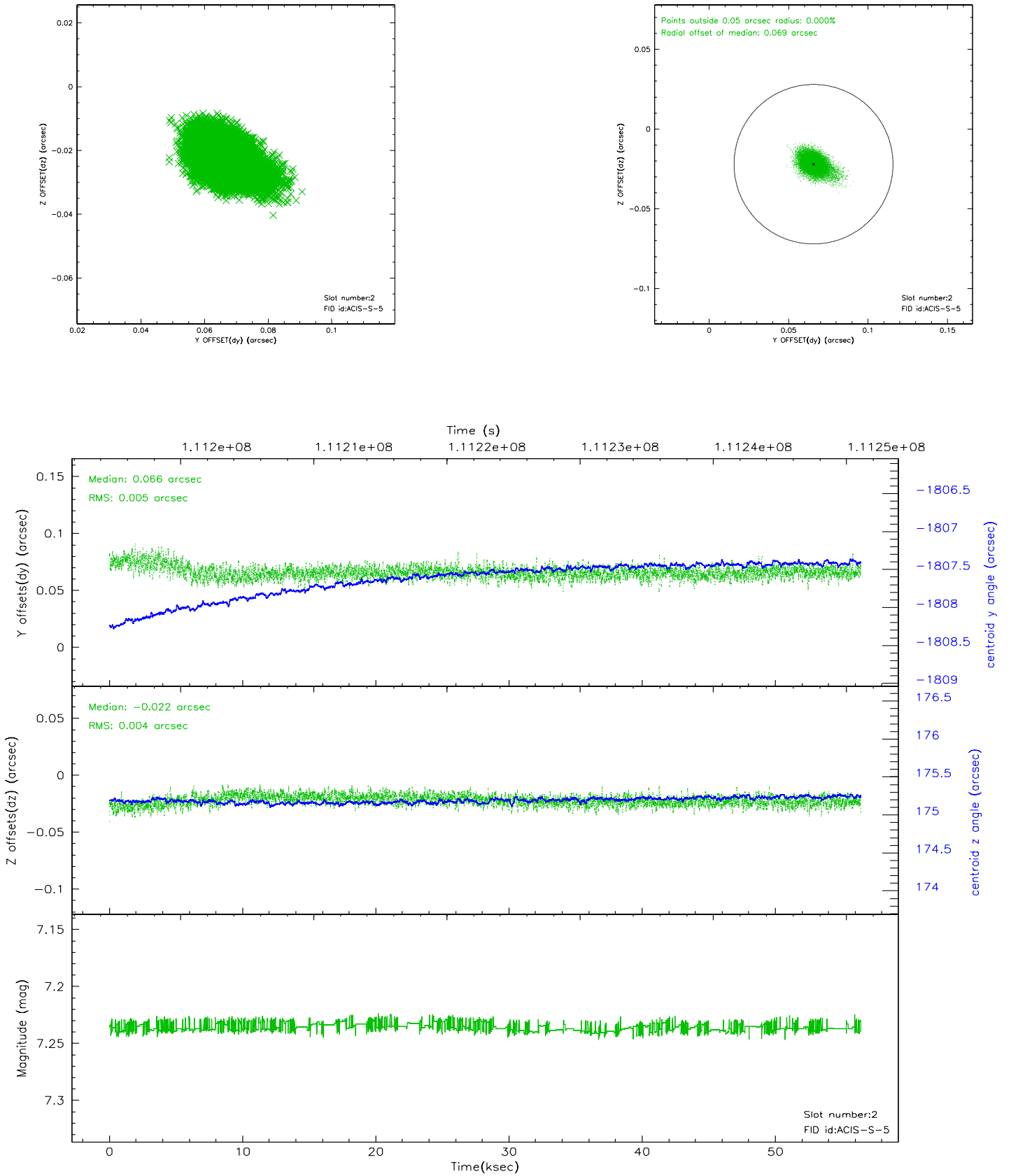
### 2.5.1 Slot 0



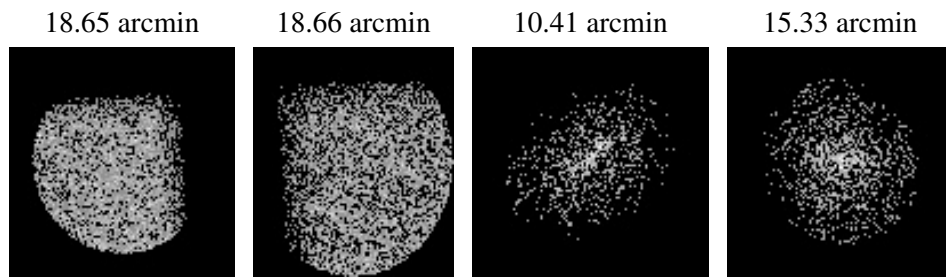
## 2.5.2 Slot 1



### 2.5.3 Slot 2



### 3 Point Sources



## A Summary

### A.1 Status

V&V Scientist	Jen Lauer
V&V Date (YYYY-MM-DD)	2006.12.12
V&V Edition	1
V&V Disposition and Status	OK
V&V Charge Time	55.955

### A.2 Comments

Monitor constraint met.