

# V&V Reference Report

## L2 ASCDS Version : 7.6.9

Observation 2040 - L2 Version 001  
Chandra X-Ray Center

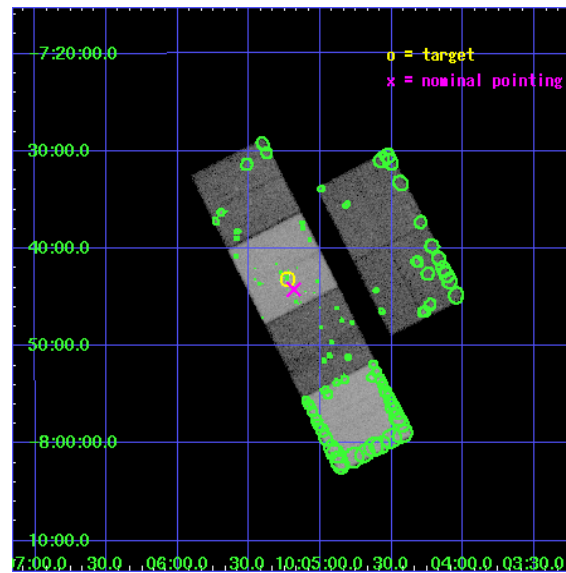
L2 Processing Date : Dec 8 2006

## Contents

<b>1</b>	<b>Front</b>	<b>2</b>
<b>2</b>	<b>OBI</b>	<b>3</b>
2.1	OBI . . . . .	3
2.1.1	Images . . . . .	3
2.1.2	Bias . . . . .	3
2.1.3	Parameters . . . . .	4
2.1.4	Events . . . . .	4
2.2	Compared Parameters . . . . .	5
2.3	Aspect . . . . .	6
2.4	Star Slots . . . . .	9
2.4.1	Slot 3 . . . . .	9
2.4.2	Slot 4 . . . . .	10
2.4.3	Slot 5 . . . . .	11
2.4.4	Slot 6 . . . . .	12
2.4.5	Slot 7 . . . . .	13
2.5	FID Slots . . . . .	14
2.5.1	Slot 0 . . . . .	14
2.5.2	Slot 1 . . . . .	15
2.5.3	Slot 2 . . . . .	16
<b>3</b>	<b>Point Sources</b>	<b>17</b>
<b>A</b>	<b>Summary</b>	<b>18</b>
A.1	Status . . . . .	18
A.2	Comments . . . . .	18

# 1 Front

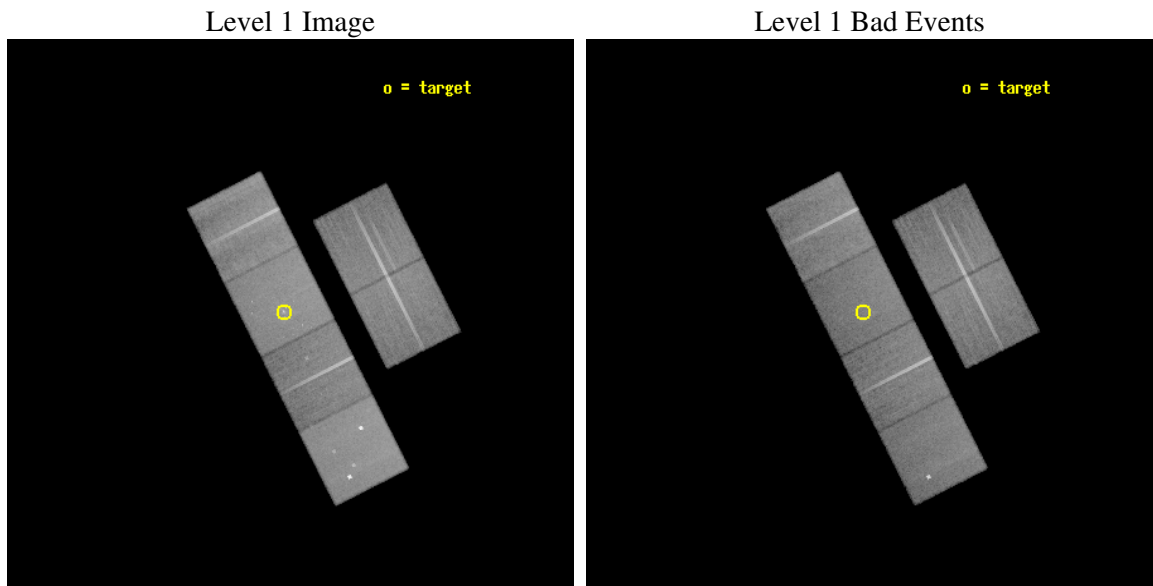
seq_num	600174
obs_id	2040
title	THE VERY FAINTEST X-RAY FAINT EARLY-TYPE GALAXIES
observer	Dr. Jimmy Irwin
object	NGC3115
dtcycle	0
cycle	P
ra_targ	151.3075
dec_targ	-7.719167
ra_nom	151.29642521455
dec_nom	-7.73689738515
roll_nom	243.11467079727
revision	2
ontime	37452.800034881
livetime	36978.55012947
ontime2	37452.800034881
ontime3	37452.800034881
ontime5	37452.800034881
ontime6	37449.559074625
ontime7	37452.800034881
ontime8	37452.800034881
l2events	368725



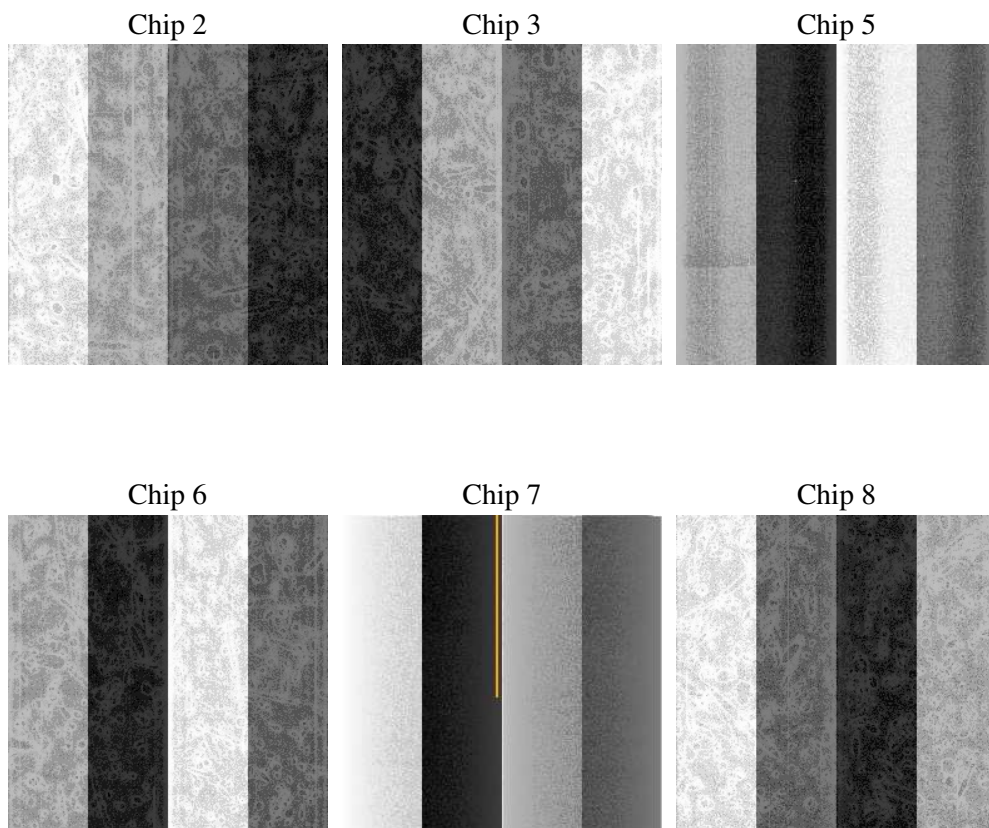
## 2 OBI

### 2.1 OBI

#### 2.1.1 Images



#### 2.1.2 Bias



### 2.1.3 Parameters

obi_num	0
ascdsver	7.6.9
caldsver	3.2.4
date	2006-12-08T05:41:12
revision	2

sched_exp_time	37500.000000
ontime	37456.20911032
ontime2	37456.20911032
ontime3	37456.20911032
ontime5	37456.20911032
ontime6	37452.968150064
ontime7	37456.20911032
ontime8	37456.20911032
l1events	1737282

### 2.1.4 Events

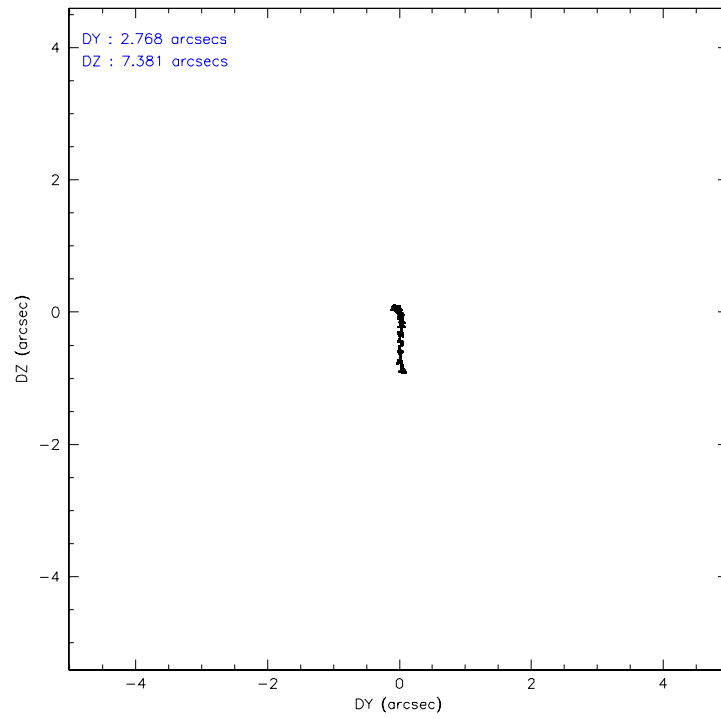
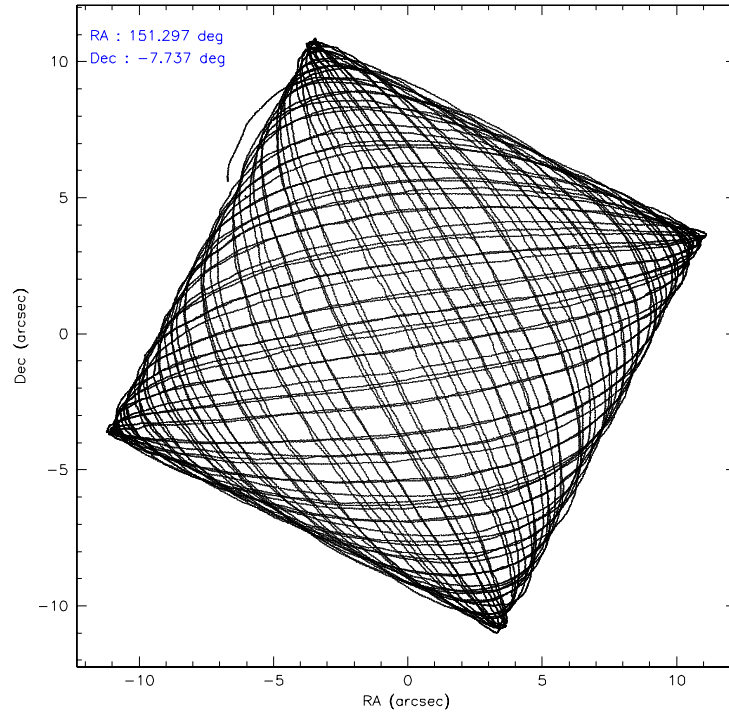
	ccd 2	ccd 3	ccd 5	ccd 6	ccd 7	ccd 8
level 1 events	258957	243823	353425	248233	320278	312566
rejected events	230197	215669	194547	218713	194128	244555
rejected %	88%	88%	55%	88%	60%	78%

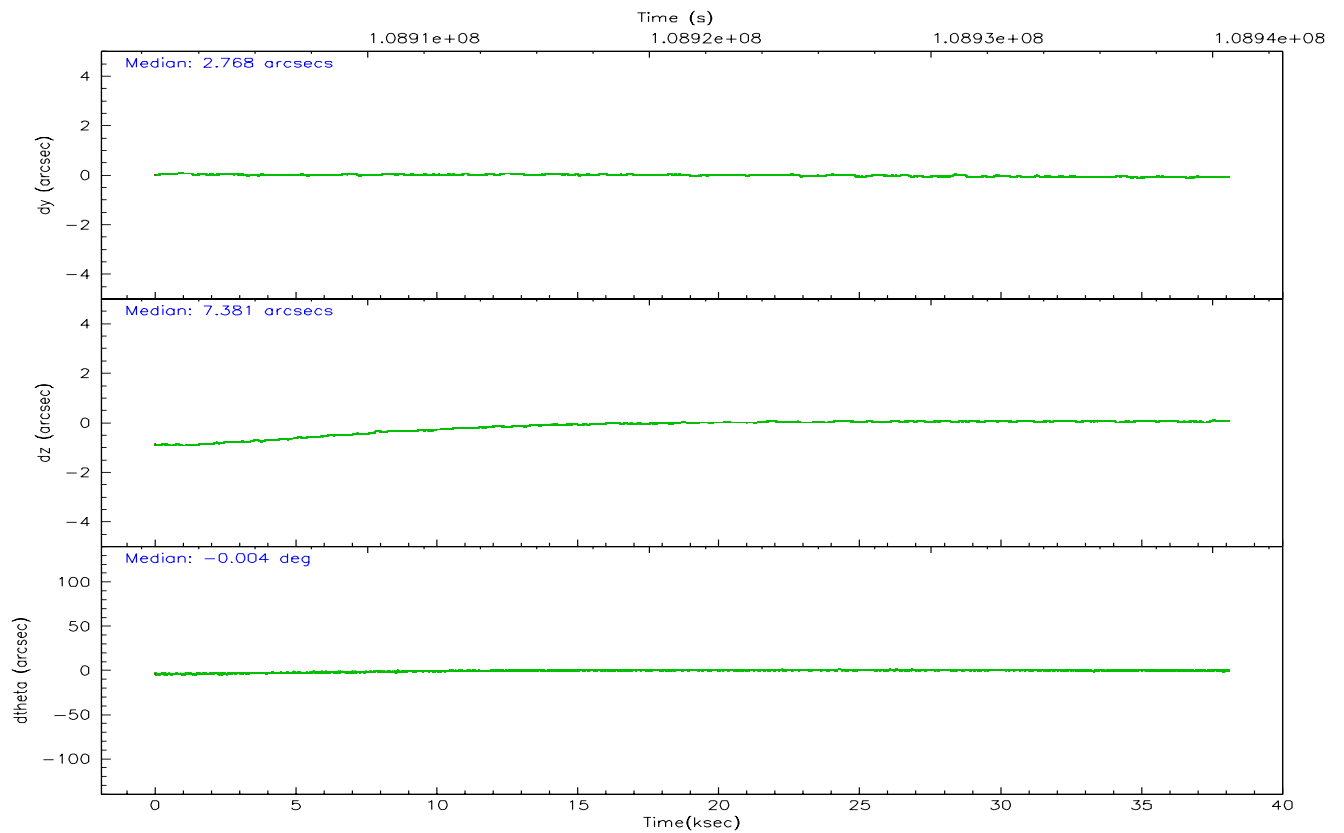
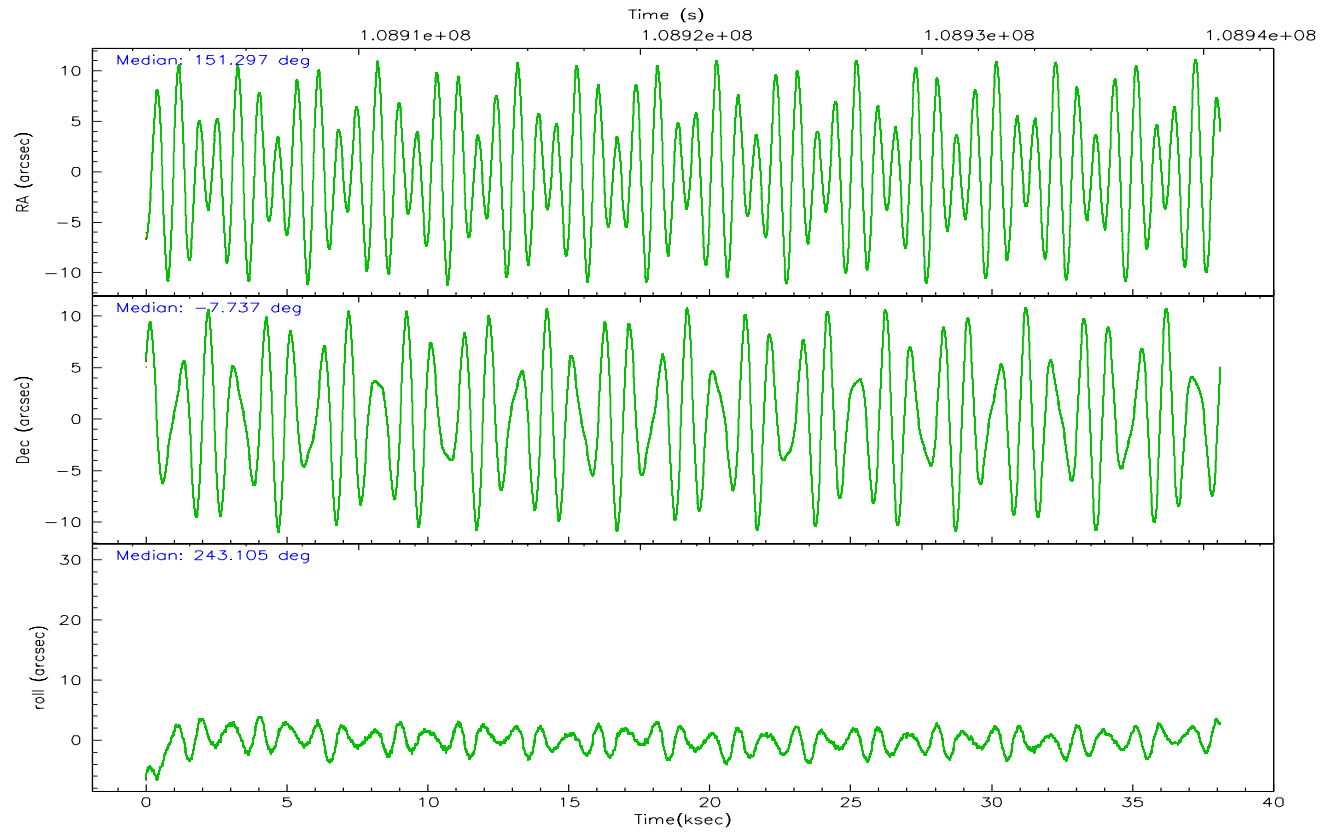
	ccd 2	ccd 3	ccd 5	ccd 6	ccd 7	ccd 8
grade 0 events	12487	12050	17220	12251	9203	22121
	4%	4%	4%	4%	2%	7%
grade 1 events	118	122	227	148	182	195
	0%	0%	0%	0%	0%	0%
grade 2 events	6173	5708	47360	5801	30726	13657
	2%	2%	13%	2%	9%	4%
grade 3 events	2524	2719	4688	2858	7057	8210
	0%	1%	1%	1%	2%	2%
grade 4 events	2589	2608	3567	2866	6880	7538
	0%	1%	1%	1%	2%	2%
grade 5 events	8523	9383	18691	10471	21249	12962
	3%	3%	5%	4%	6%	4%
grade 6 events	4997	5069	86054	5746	72298	16487
	1%	2%	24%	2%	22%	5%
grade 7 events	221546	206164	175618	208092	172683	231396
	85%	84%	49%	83%	53%	74%

## 2.2 Compared Parameters

Parameter	Planned	Actual	Parameter	Planned	Actual
Instrument	ACIS	ACIS	Obspar format version number	6	6
Detector	ACIS-235678	ACIS-235678	Obspar file type	PREDICTED	ACTUAL
Grating	NONE	NONE	Obspar update status	NONE	UPDATED
Data mode	FAINT	FAINT	Number of optional ACIS chips dropped	0	0
Observation mode	POINTING	POINTING	On-chip summing requested	N	N
Pointing RA	151.294639	151.2964252145533	Subarray requested	NONE	NONE
Pointing Dec	-7.709673	-7.736897385149955	Alternating exposures requested	N	N
Pointing Roll	242.957804	243.1146707972732	Primary exposure time	0.000000	3.2
SIM focus pos (mm)	-0.684267	-0.6828225247311905			
SIM defocus (mm)	0	0.001444936568705701			
SIM translation stage pos (mm)	-190.132523	-190.1400660498719			
SIM translation stage offset (mm)	0	0.00754346686406393			
Observation start time	108903072.184000	108901909.36335			
Observation start date	2001-06-14T10:50:08	2001-06-14T10:31:49			
Observation end time	108940572.184000	108941127.91488			
Observation end date	2001-06-14T21:15:08	2001-06-14T21:25:27			
Read mode	TIMED	TIMED			

## 2.3 Aspect





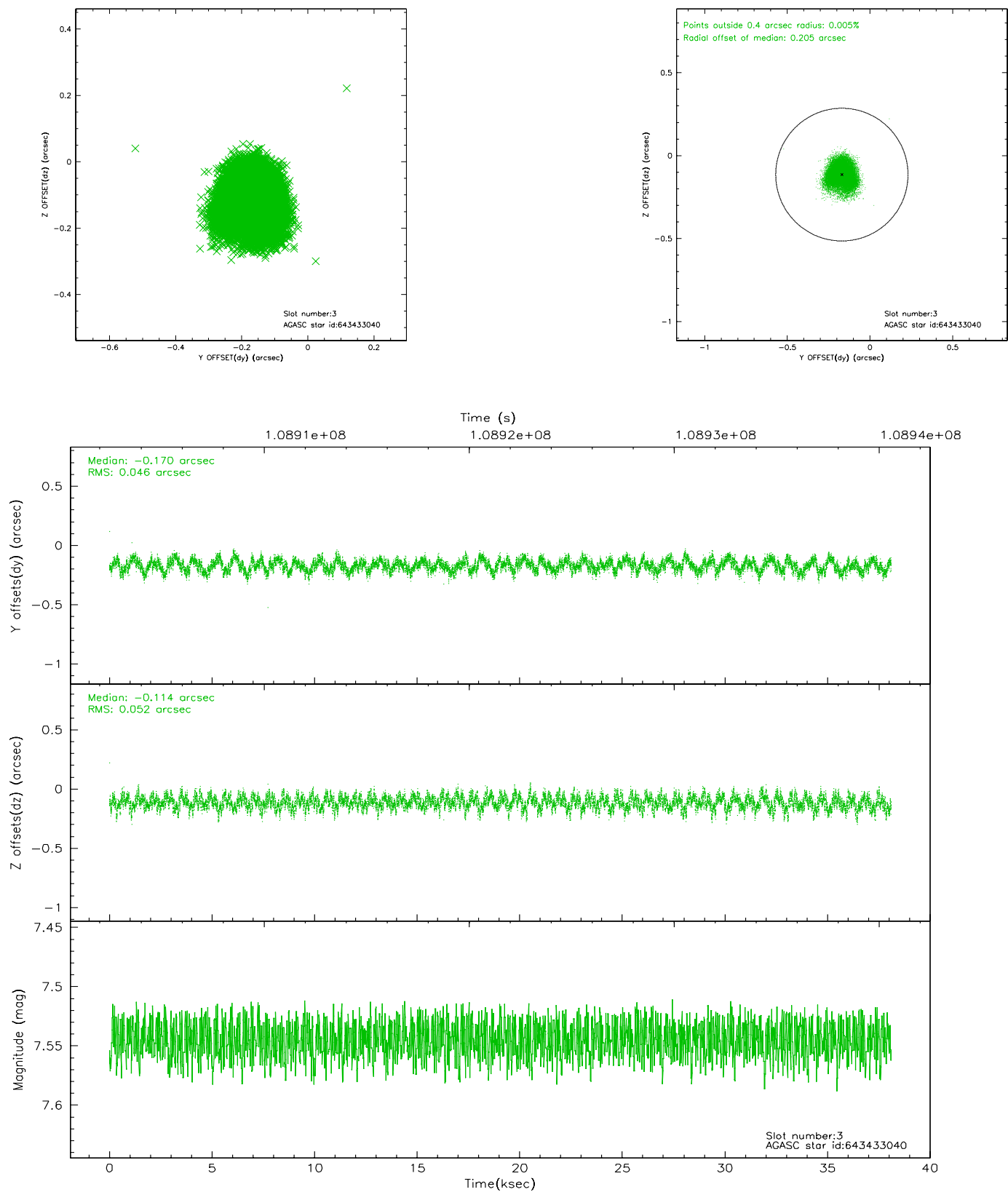
### Slot Statistics

slot	status	id	mag	n_pts	med_dy	med_dz	dr1	dr2	ra	dec	mean_y	mean_z
0	FID	ACIS-S-2	7.11	9295	0.011	0.034	0.010	0.020	0.000000	0.000000	-755.39	-1728.36
1	FID	ACIS-S-4	7.19	9293	-0.109	-0.014	0.009	0.025	0.000000	0.000000	2157.76	180.05
2	FID	ACIS-S-5	7.24	9291	0.066	-0.009	0.009	0.021	0.000000	0.000000	-1808.14	173.76
3	GUIDE	643433040	7.54	18587	-0.170	-0.114	0.076	0.116	151.111617	-7.218386	-1276.70	-1386.20
4	GUIDE	717889000	8.04	18588	-0.032	0.237	0.074	0.126	151.849024	-7.724812	-848.82	1786.86
5	GUIDE	717750312	8.99	18584	0.034	0.005	0.077	0.124	150.984877	-7.661913	350.90	-1062.13
6	GUIDE	717752784	8.77	18581	0.089	-0.024	0.095	0.149	150.621335	-8.064937	2233.44	-1554.96
7	GUIDE	717751144	10.08	18574	0.088	-0.112	0.226	0.361	150.941883	-7.520568	-32.02	-1430.76

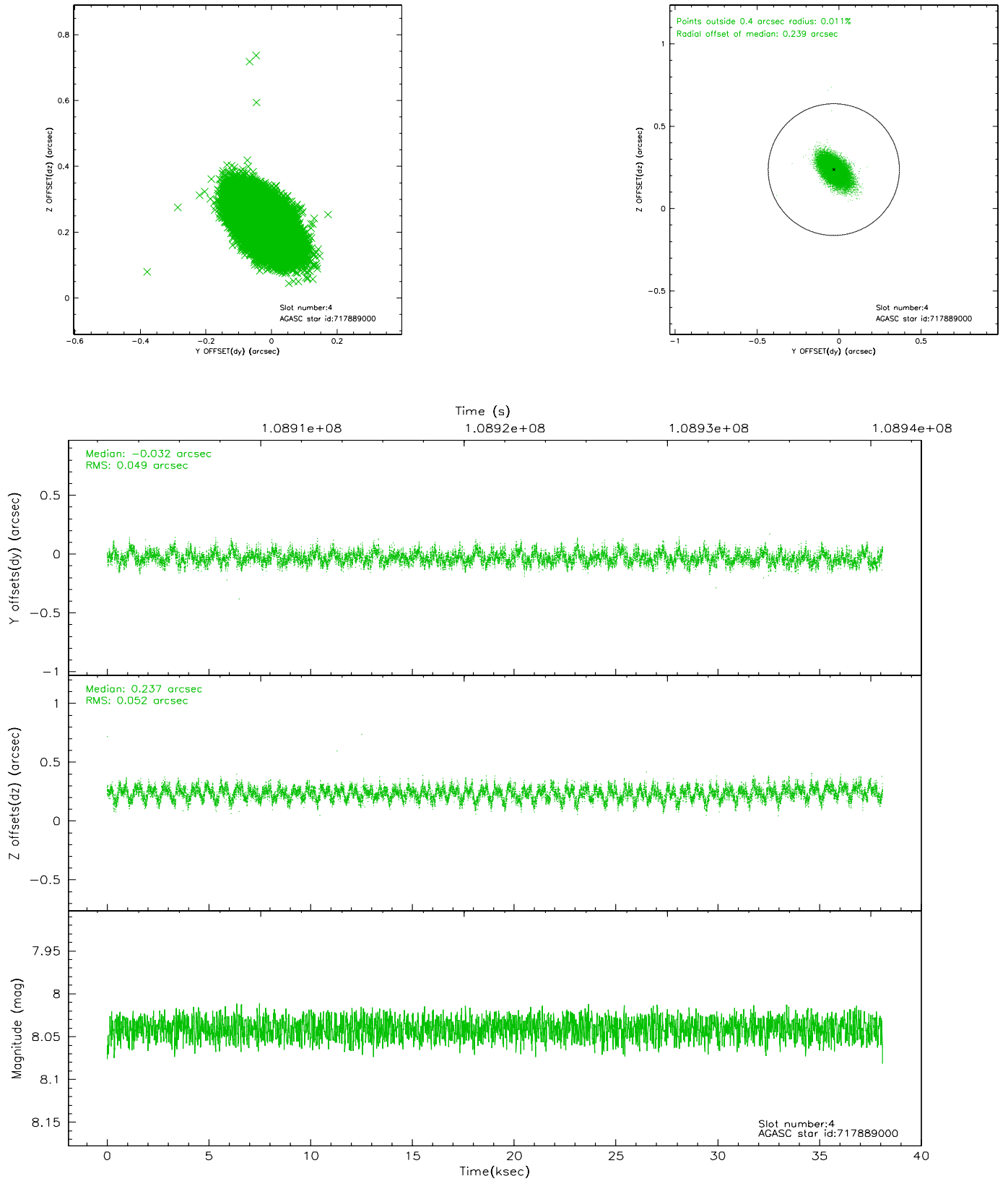


## 2.4 Star Slots

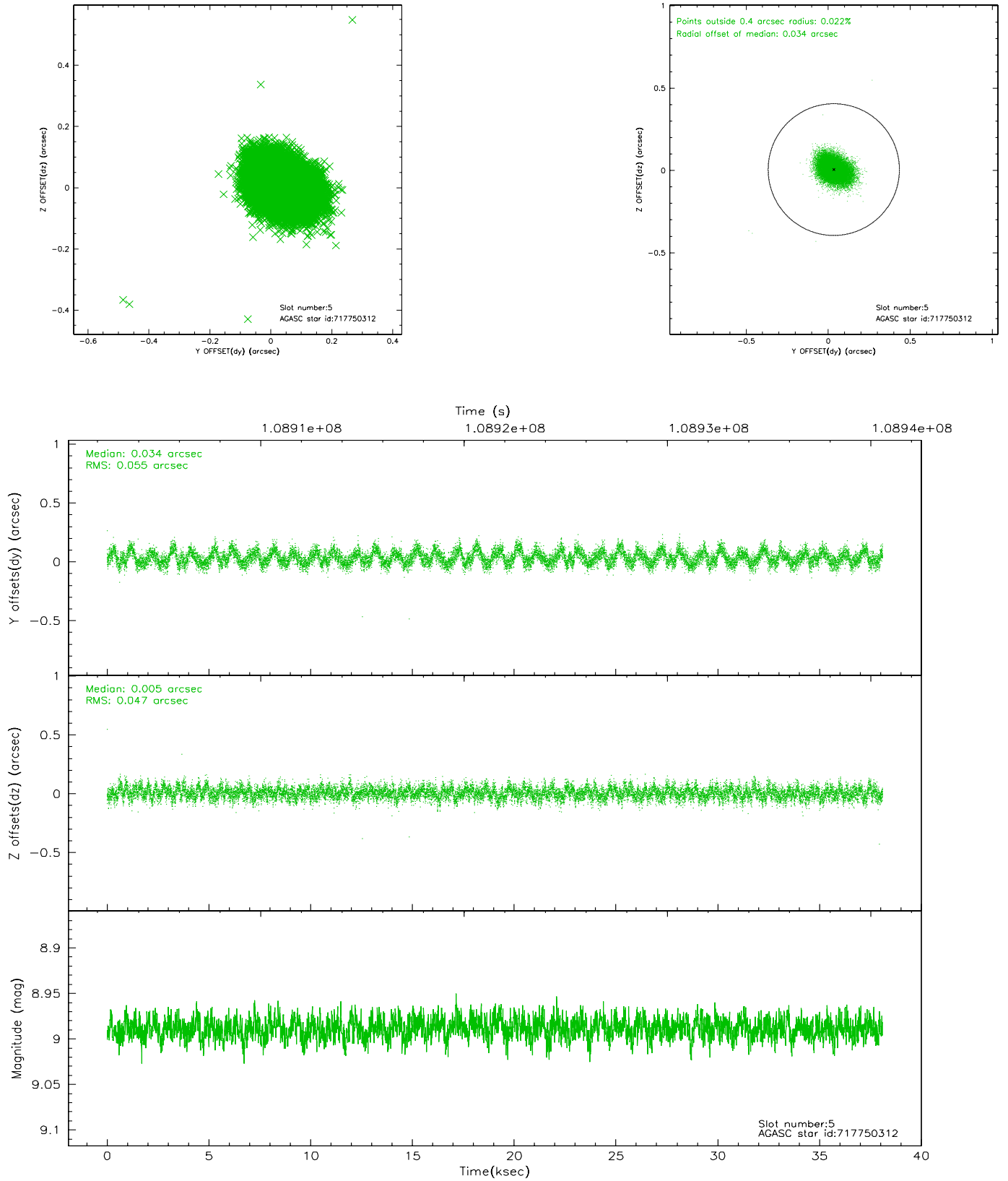
### 2.4.1 Slot 3



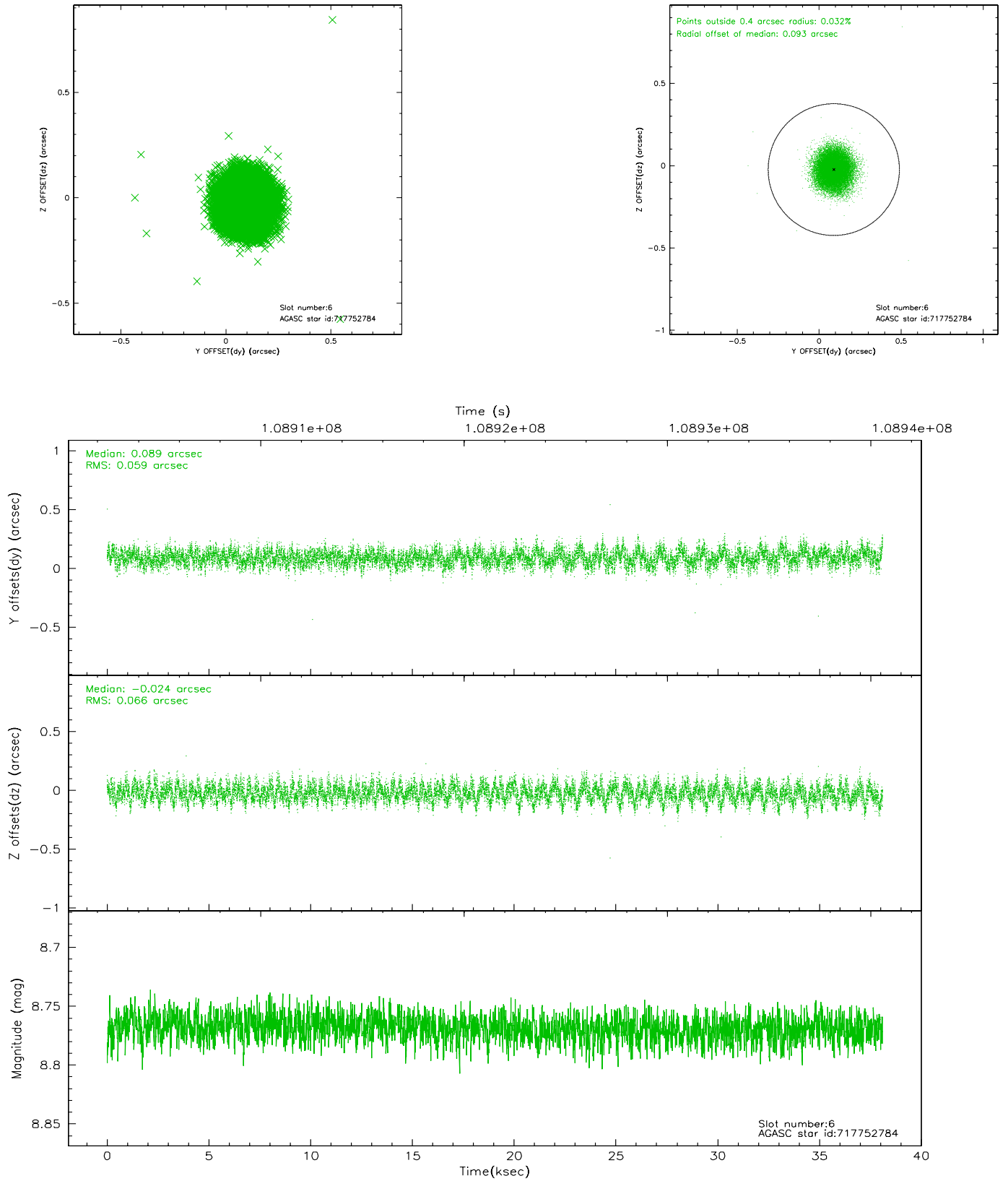
## 2.4.2 Slot 4



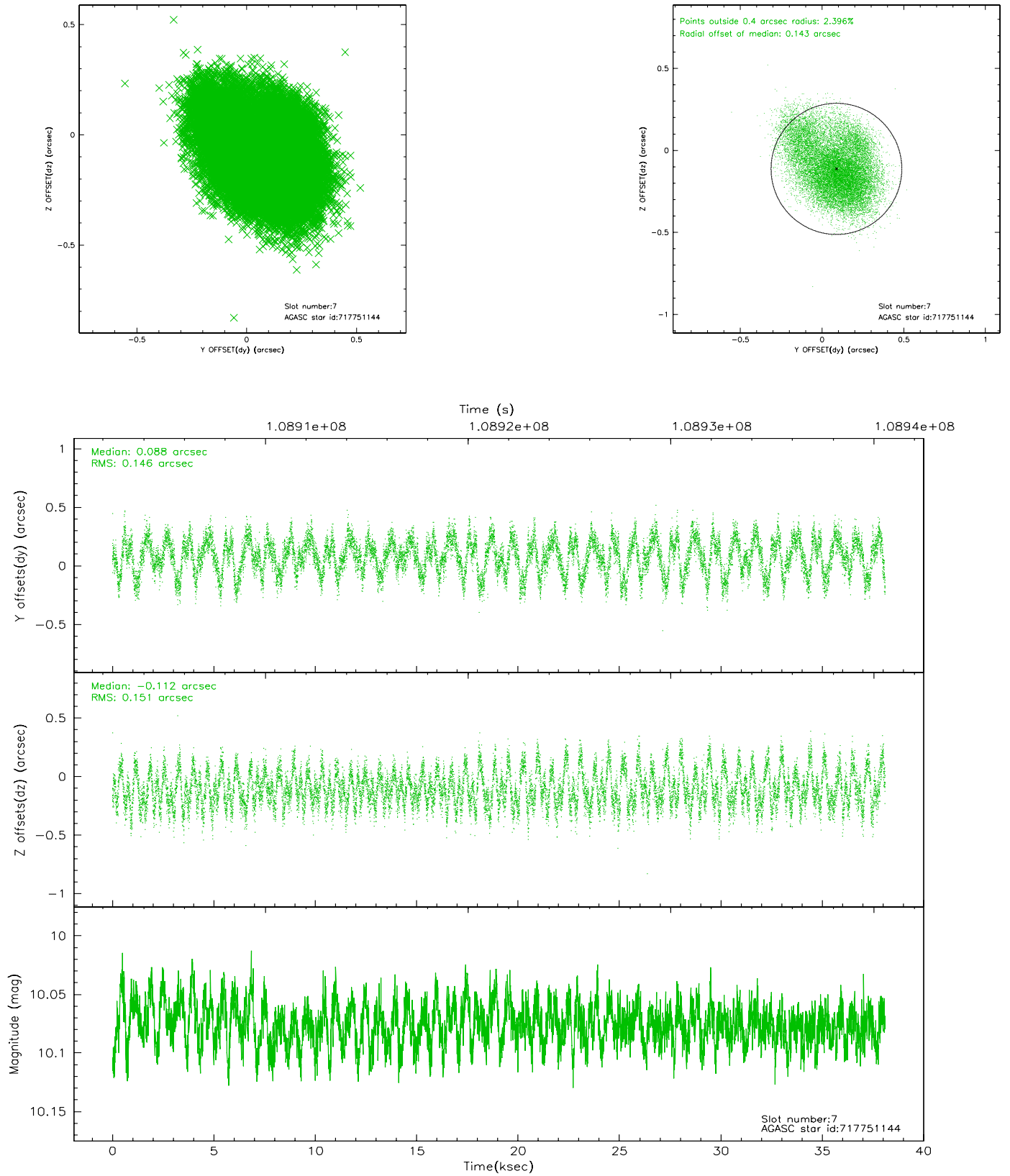
### 2.4.3 Slot 5



## 2.4.4 Slot 6

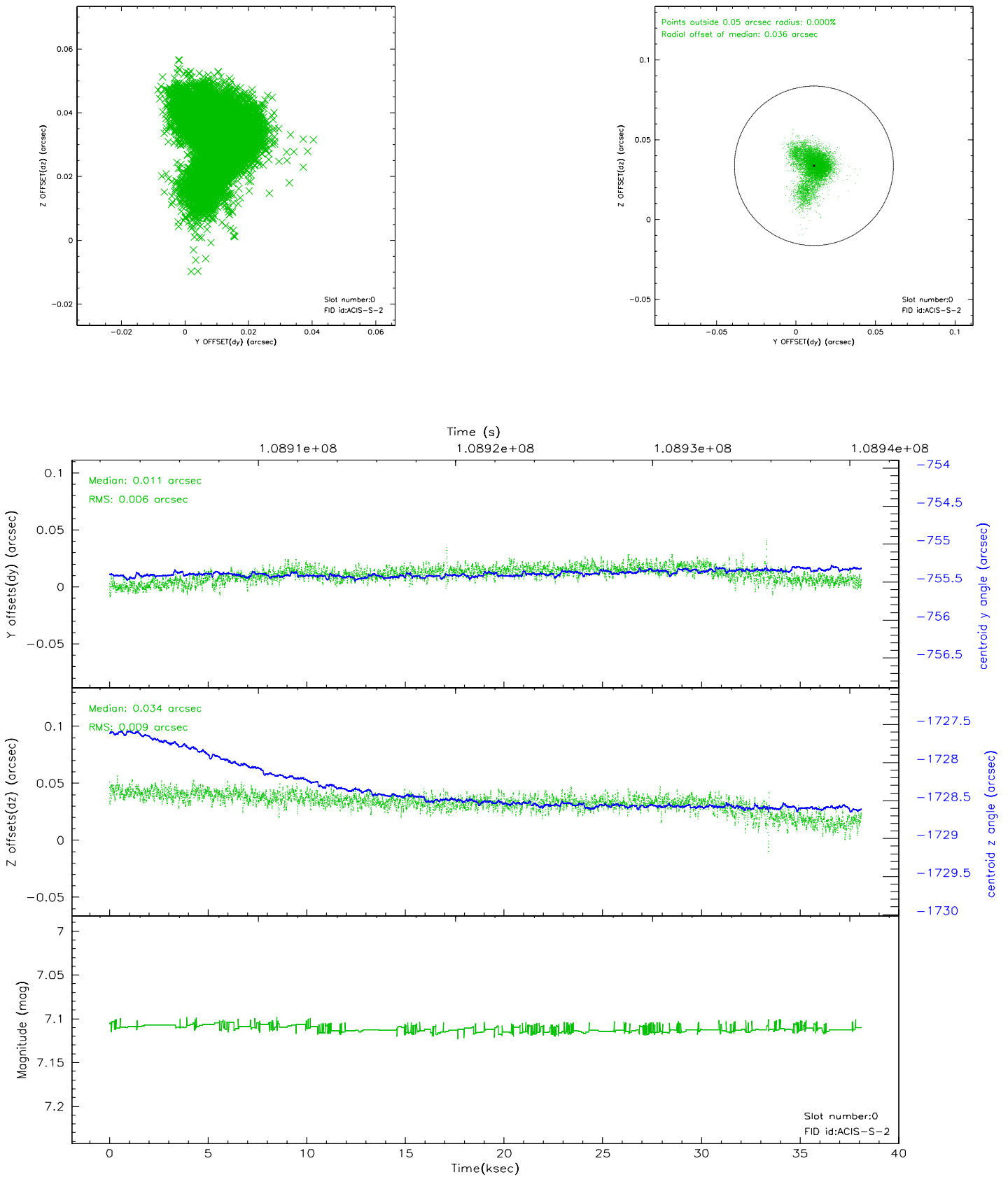


## 2.4.5 Slot 7

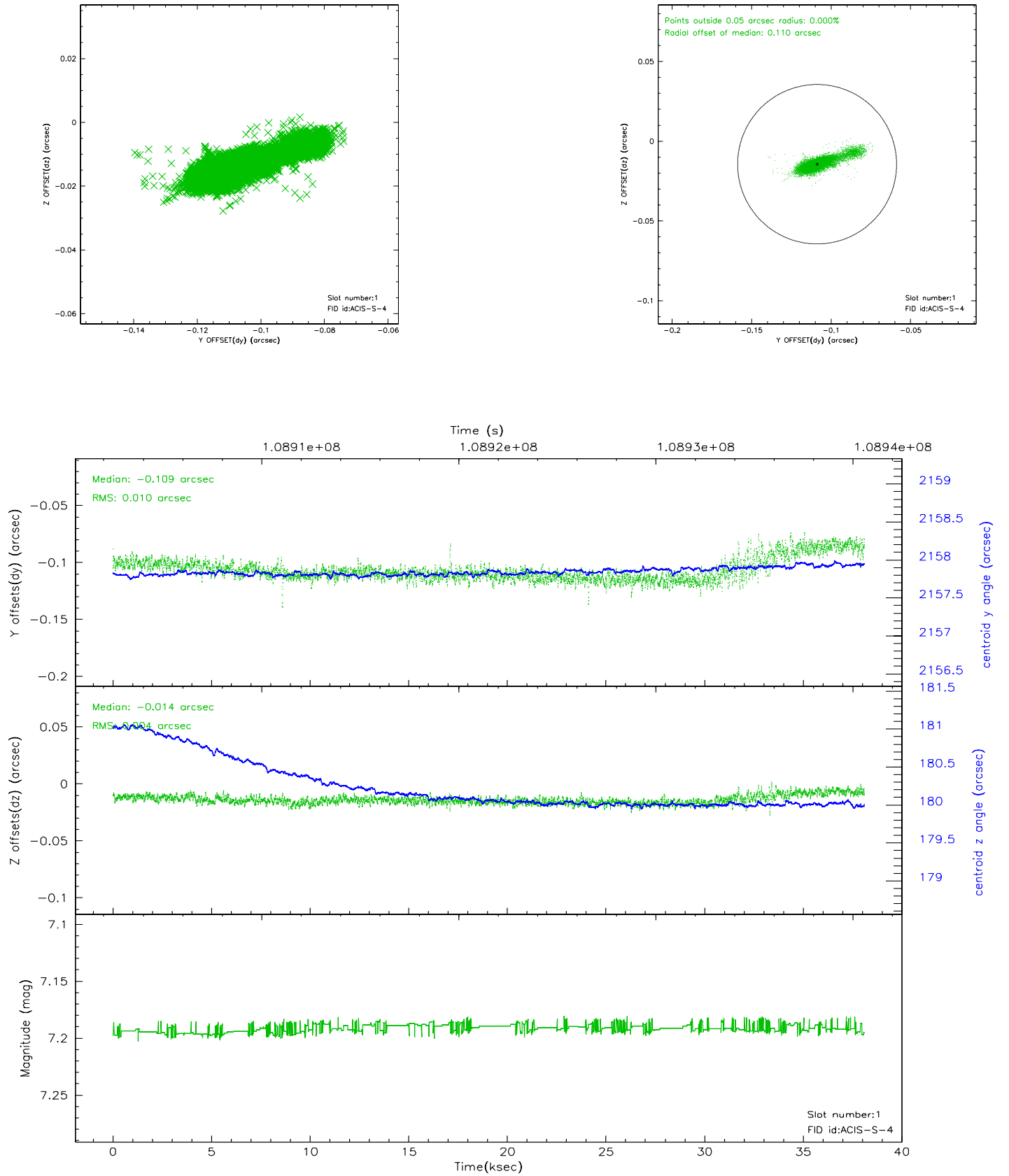


## 2.5 FID Slots

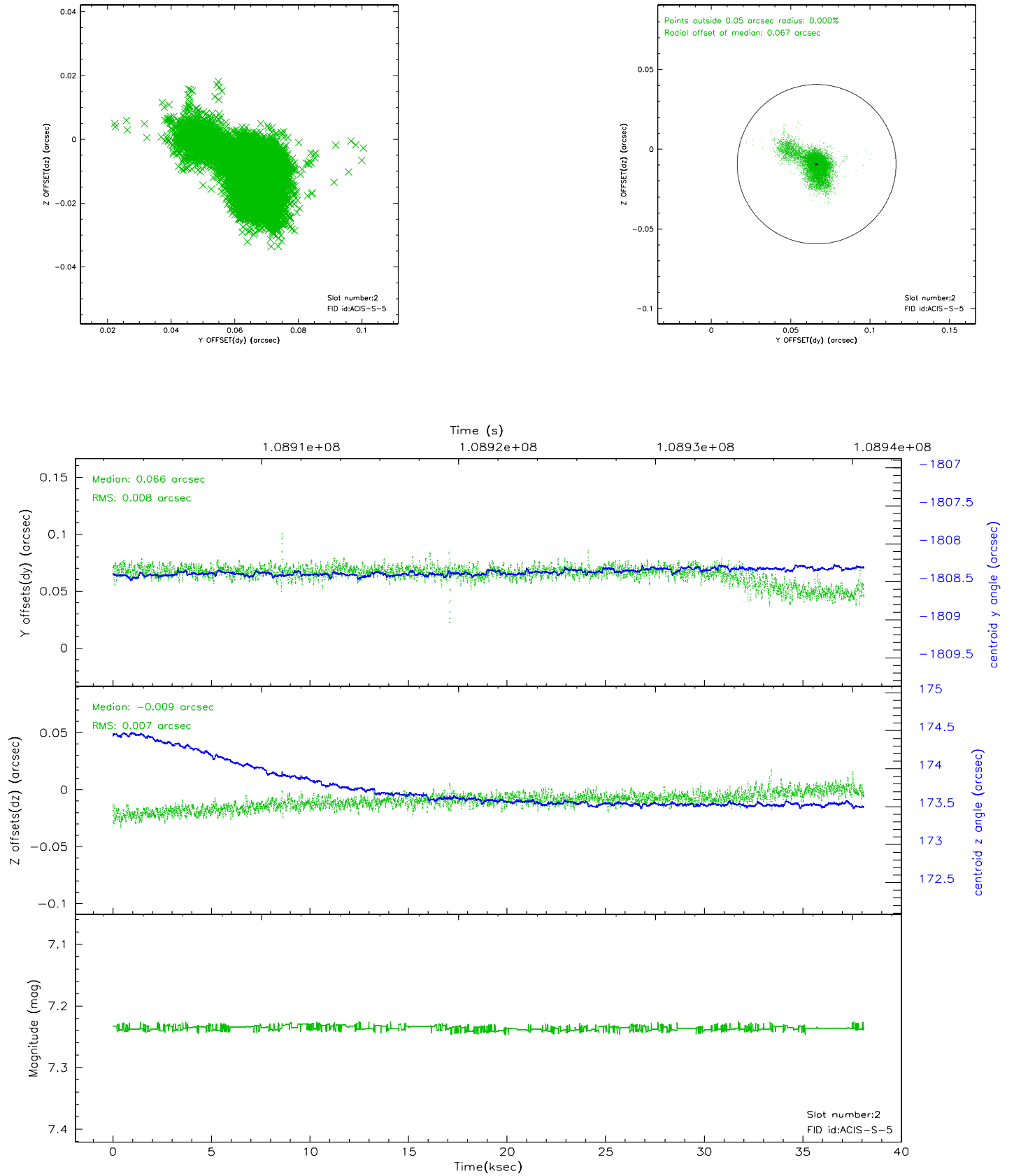
### 2.5.1 Slot 0



## 2.5.2 Slot 1

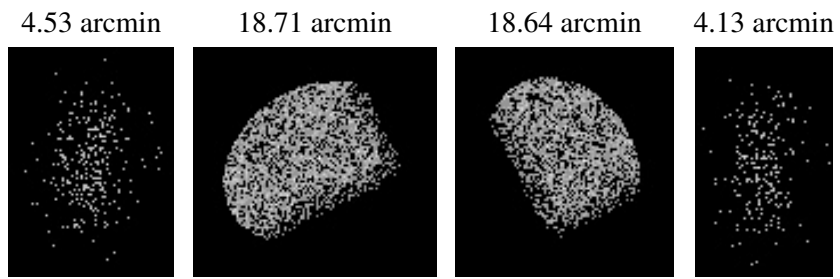


### 2.5.3 Slot 2





### 3 Point Sources



## A Summary

### A.1 Status

V&V Scientist	Beth Sundheim
V&V Date (YYYY-MM-DD)	2006.12.08
V&V Edition	1
V&V Disposition and Status	OK
V&V Charge Time	37.452

### A.2 Comments